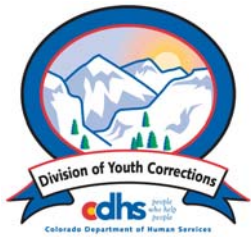


Fiscal Year 2005-2006

Management Reference Manual



Colorado Department of Human Services
Office of Children, Youth and Family Services
Division of Youth Corrections

Working with Colorado Communities to Achieve Justice

January 2007

This manual provides the information most often requested on DYC client populations. Any questions concerning the data presented in this manual may be directed to the Research and Evaluation Unit, Division of Youth Corrections, 4255 S. Knox Court, Denver, CO 80236, or kelli.burmeister@state.co.us

**Colorado Department of Human Services
Division of Youth Corrections**



January, 2007

<http://www.cdhs.state.co.us/dyc>

John Gomez
Director
Division of Youth Corrections

Pam Temple
 Executive Assistant

Ken Cole
Associate Director

Maurice Williams
Associate Director

Caren Leaf
Associate Director

Ron Richardson
 Director
 Western Region

Al Estrada
 Director
 Southern Region

Joe Thome
 Director
 Northeast Region

Jim Gault
 Director
 Central Region

Dan Robinson
 Director
 Grand Mesa YSC

Leo Navarro
 Director
 Spring Creek YSC

Annette Dietrich
 Director
 Pueblo YSC

Ann Freeman
 Director
 Zeb Pike YSC

Denesio Gonzales
 Director
 Sol Vista YSC

Dwayne Epple
 Director
 Adams YSC

Brent Nittmann
 Director
 Platte Valley YSC

Cornelius Foxworth
 Director
 Gilliam YSC

Csaba Cseresnyes
 Director
 Mt. View YSC

Brent Buford
 Director
 Marvin Foote YSC

Anders Jacobson
 Director
 Lookout Mountain YSC

Paul Targoff
 Director
 Quality Assurance

Edward Wensuc
 Director
 Research & Evaluation

Susan Hunt
 Chief Financial Officer

Doug Schulz
 ITS Liaison

Staff Development

Contracts and
 Bed Management
 Office

Sally Stevens
 Director
 Food Services

Matt Friesen
 Coordinator
 Senate Bill 94

Mike Wales
 Director
 Education Services

Joseph Anderson
 Director
 Assessment Services

Debra Cady
 Director
 Clinical Services

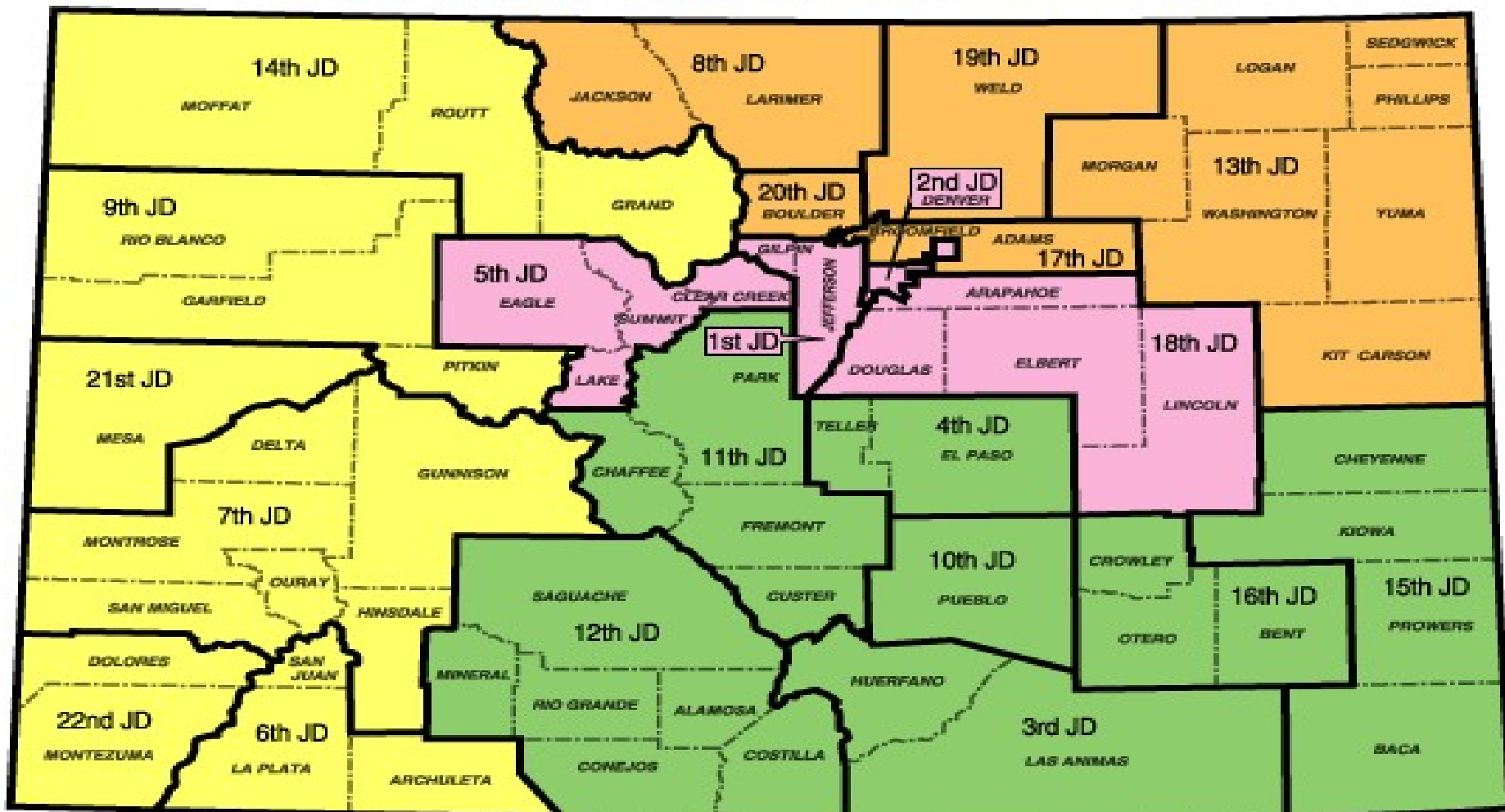
Ken Cole - Facilities Management Liaison
 Maurice Williams - Human Resources Liaison

Updated
 06/01/2006

Division of Youth Corrections

Catchment Areas/DYC Regional Management Structure

Central Region, Northeast Region, Southern Region, and Western Region



Management Reference Manual

Fiscal Year 2005-2006

Executive Summary	i
Section I: Colorado State Totals	
Filtering Process to Detention	1
Filtering Process to Commitment	2
All Clients Population Data	3
Section II: Detention Program Services	
Detained Youth Population Trends	4
Detained Youth Population by Program	6
Detained Youth Population Trends ADP by Program	7
Detained Youth Demographic Trends	8
Detained Youth Demographic Trends by Gender	10
Section III: Commitment Program Services	
Committed Youth Population Trends	11
Committed Youth Population by Program	13
Committed Youth Population Trends ADP	15
Committed Youth Demographic Trends	16
Committed Youth Demographic Trends by Gender	17
New Commitment Trends by Gender	18
Committed Youth Commitment Classification	20
Committed Youth Length of Stay Trends	21
Committed Youth Parole Trends	22
Committed Youth Discharge Trends	23
Section IV: Regional Summaries	
Committed Youth Demographic Trends	24
Committed Youth Discharge Trends	25
Glossary of Terms	Appendix

Fiscal Year 2005-06 Executive Summary

The Management Reference Manual is designed to provide population information on youth served by the Division of Youth Corrections (DYC) during FY 2005-06 and other trend data. Section I contains statewide population information, while Sections II and III provide more detailed population data that describes the detention and commitment populations respectively. Section IV contains the Division's parole data. A report summary is included below.

Detention:

Governor Bill Owens signed Senate Bill 03-286 into law on May 1, 2003. This legislation established a 'cap' or limit of 479 on the number of State funded detention beds. This legislation was implemented on October 1, 2003. The FY 2000-01 detention average daily population (ADP) was 583.0, but since implementation, under current state law, the detention ADP can never exceed 479. Each of the State's 22 judicial districts has been allocated a portion of the 479 beds. Statutory language provides that districts may borrow beds within an established 'catchment' area. Statutes also mandate that districts have procedures in place for emergency release of detained youth in the event that a district is unable to borrow a bed.

FY 2005-06 was the second full year of operation under the new cap. Since FY 2003-04, where detention ADP reached a ten-year low, detention LOS and ADP has steadily increased. The detention LOS increased by one full day from 13.1 in FY 2004-05 to 14.1 days in FY 2005-06, and the ADP increased 6% to 426.3. As anticipated, the number of detention admissions observed a 17-year low in FY 2005-06 (10,698). Declines in detention admissions were expected following the implementation of the statewide capping legislation. Prior to the cap, local jurisdictions were given substantial discretion as to which youth could be admitted into detention. Currently, local jurisdictions still have this level of discretion, but now it must be balanced by the reality of a finite number of allocated beds. As a result, detention is now experiencing a marked reduction in usage particularly in the admission of truants, status offenders, and other less serious offenders.

Commitment:

In December 2005, Legislative Council Staff (LCS) and the Division of Criminal Justice (DCJ) released their last set of projections. At this time, each agency had predicted stable and continued growth for Division's commitment ADP. However, since the release of the December 2005 projections, the Division has embarked upon the Continuum of Care (CofC) Initiative. One of the expected outcomes of the CofC Initiative was the gradual reduction of commitment ADP as youth transition from residential placements into the community. The impact of CofC is reflected in the growth rate of last year's commitment ADP. The average daily residential population (ADP) experienced a diminutive decrease (-0.1 ADP), from 1453.5 youth in FY 2004-05 to 1,453.4 youth in FY 2005-06. Prior to last year, it had not been since FY 1986-87 that Commitment ADP has experienced a negative growth rate.

New commitments decreased by 2% to 933 during FY 2005-06. The new commitment rate dropped slightly to 17.9 committed youth per 10,000 Colorado youth, from 18.3 committed youth per 10,000 Colorado youth in FY 2004-05. For the past 10 years, the number of new commitments have increased and dropped, remaining between 750 and 950 each year.

In FY2005-06, the population of youth in assessment increased by 28% to 92.2 ADP. Likewise, the ADP of youth in secure placement increased by 5% to 523.1. Conversely, the population of youth in community placement decreased by 19% (to a five-year low of 165.5 ADP). The ADP of youth in staff-supervised placement decreased minimally from 650.2 ADP to 647.2 ADP.

Parole:

The Legislative Council Staff (LCS) and the Division of Criminal Justice (DCJ) predicted the parole population would be on the rise, however, both agencies acknowledged that the prediction is a difficult one based on the significant changes DYJ has endured in regards to parole sentencing in recent years. LSC predicted the parole population would increase 10.5% to 539 ADP. Although the increase was not as significant, DYJ experienced its first parole ADP increase in the past 5 years coming in at 508.7. This is a 4% increase from last year's parole ADP of 490.3.

In addition, parole populations are likely to grow because of the Division's Continuum of Care Initiative. As the Division begins to actively identify appropriate youth in residential placement and establish community-based services to address the youth's criminogenic needs, it is reasonable expect that this Initiative will yield more Parole Board referrals and ultimately an increased Parole ADP level.

Fiscal Year 2005-06 was also the second full year following the implementation of Senate Bill 03-284, which shortened the mandatory parole length from nine to six months, effective May 1, 2003. However, since the passage of SB 03-284, the parole LOS has consistently exceeded the mandatory parole period of 6 months. For many high-risk youth, the Parole Board has the statutory authority to extend parole for 90 days if determined to be "within the best interest of the juvenile and the public to do so"¹ or for an additional 15 months if there is a "finding of special circumstances" for youth adjudicated for certain offenses (e.g., violent offense, sex offenses, etc.)². However, parole LOS declined from 8.0 months in FY 2003-04 to 7.1 months in FY 2004-05 to 6.4 months in FY 2005-06. This decline was expected as we continue to see the effects of the legislature that reduced mandatory parole length of stay from nine to six months.

In FY 2005-06, discharged youth rose 12 % to 929 youth. This increase in parole discharges accompanied a statewide increase in parole ADP. In the past years, FY 2003-04, there were 1,003 youth discharged, in FY 2004-05 discharges declined 17% to 831 youth.

¹ 19-2-1002 (5)(a)(I), C.R.S.

² 19-2-1002 (5)(a)(II), C.R.S

I. STATE TOTALS FY 2005-06

A. Juvenile Justice Filtering Process to Detention

- There were 10,698 new admissions to DYC detention during FY 2005-06. This represents 2.1% of the 10-17 year old Colorado population, and it represents 22.5% of Colorado's juvenile arrests.
- Admissions are at a 17-year low. Detention admissions dropped 3% since FY 2004-05. This is very close to last year's decline of 2% and is a very slight decline in comparison to the 14% and 21% drops of the prior fiscal years. The number of new detention admissions is following a four-year trend of decline.

B. Juvenile Justice Filtering Process to Commitment

- There were 933 new commitments to DYC during FY 2005-06. This represents 0.2% of the 10-17 year old Colorado population, and it represents 6.3% of Colorado's 14,926 juvenile filings.
- This commitment rate has remained fairly constant for the past ten fiscal years, as the State's youth population and the number of new commitments have experienced similar levels of growth.

C. Clients Served³

- There were 9,058 youth served in DYC programs during FY 2005-06, which reflects an unduplicated count of individual youth. There were 7,215 youth served in detention programs, 2,404 youth were served in residential commitment programs, and 1,863 youth were served in parole services.

D. DYC Population Summary

- There was an ADP of 426.3 detained youth, which marks the second year of growth after 5 years of decline.
- There was an ADP of 1,453.4 committed residential youth, which is consistent with last year's ADP of 1453.5.
- There has been a steady increase in commitment ADP over the past 10 years; however, there has been virtually no change this year as compared to last year.
- There was an ADP of 508.7 paroled youth.
- There were 10,698 new admissions to detention, which is a 17-year low, although there was only a 3% decrease in admissions during FY 2005-06 and a 2% decrease during FY 2004-05.
- There were 933 new commitments.

³ Clients Served is an unduplicated count. Categorical totals are not a sum of individual program counts and are not available for all categories.

II. DETENTION POPULATION Trends and Characteristics

A. Population Trends

- Fiscal year 2005-06 was the second full year of the detention operation under the legislative, statewide cap of 479 youth. As a result of the provisions of SB 03-286, detention ADP is still much lower than it had been before the capping legislation. Detention ADP is 27% lower than it was five years ago, although at 426.3.0 it is up 6% since last fiscal year.
- Detention admissions are at a 17-year low, and at 10,698 are 28% lower than they were five years ago in FY 2000-01.
- Ninety-five percent of detained youth were held in State-Operated facilities, essentially the same percent as FY 2004-05. Since the detention cap was implemented, there has been a decreased reliance on Privately-Operated placements. Only 5% of this year's ADP was detained in a contracted secure or staff-secure facility.
- The average length of stay (LOS) for a youth in detention increased by one full day, or 7.6%, from last year's 13.1 days. It is 3% below what it was five years ago. A decrease in LOS was anticipated because of the detention cap, corresponding to the decrease in detention ADP.

B. Population Characteristics

1. Gender

- The percent of male admissions increased to 78% of the total detention population, which is a 1% decrease in the number of male new admits in FY 2004-05. The percent of female admissions decreased to 22% of the total detention population, which is a 7% decrease from the number of female new admits last year.

2. Ethnicity

- Anglo-American youth (42%) have consistently represented the largest ethnic group in DYC detention facilities, followed by Hispanic/Latino youth (39%), and African-American youth (16%). Three year trends show the percent of Hispanic/Latino and African-American male new admits steadily increase.

3. Age

- The average age at admission in FY 2005-06 was 16 yrs, as it was in FY 2004-05 and for several years prior.
- The age distribution for FY 2005-06 is very similar to that of FY 2004-05. Seventeen year olds represented the largest age group (28%), followed by 16 year olds (26%) and 15 year olds (23%).

4. Prior Admissions

- Sixty-three percent of the youth admitted to detention in FY 2005-06 had one or more prior detention admissions. This is the same percentage as last fiscal year.

III. RESIDENTIAL COMMITMENT POPULATION

Trends and Characteristics

A. Population Trends

- The commitment population experienced a year of growth, decline, and nearly no change at all, depending on which commitment category is in focus. Residential ADP experienced a minuscule (0.1) decrease, going from 1,453.5 in FY 2004-05 to 1,453.4 in FY 2005-06. Clients served increased by 8.7%, this is the largest increase since FY 1999-00. The number of new commitments decreased by 2%, with 933 in FY 2005-06. For the past 10 years, the number of new commitments have increased and dropped, remaining between 750 and 950 each year.
- Residential commitment length of stay (LOS) experienced a decline, dropping 3.2% to 18.2 months in FY 2005-06 from 18.8 months in FY 2004-05, although it is still 12% longer that it was five years ago in FY 2000-01. This is the third consecutive year of decline for LOS, after experiencing a 10-year high in FY 2002-03.

B. Population Characteristics⁴

1. Gender

- The percentage of male new commitments remained fairly constant, with only a 1% increase from last year; however, there was a significant change in female new commitments. There was a 20% decrease in the number of female new commitments in FY 2005-06, 112 compared to 140.
- Females represent 12% and males represent 88% of the new commits for FY 2005-06. In FY 2004-05, the breakdown was 15% and 85% respectively.
- The male and female ADP has not experienced much change since last year. Female ADP has grown 1.5% since FY 2004-05, while the male population has decreased by only .2%.

2. Ethnicity

- The majority of new commitments have historically been Anglo, Hispanic/Latino and African American youth respectively, and this holds true for FY 2005-06. This year's ethnic distribution was 40% Anglo, 39% Hispanic and 18% African American.

⁴ Refers to youth who were newly committed during FY 2005-06, unless otherwise specified.

- There is a trend arising that shows the percentage of Anglo new commits going down and the percentage of Hispanic/Latino new commits going up. This is apparent for both the male and female populations.

3. Age

- The average age at commitment was 16.4 years, down from 16.5 over the past two years. This figure had remained stable at 16.4 from FY 1998-99 to FY 2000-01.
- Thirty-seven percent of youth were 17 years old at commitment, 26% were 16 years old, 19% were 15 years old, 10% were 14 years old and 3% were 13 years old. These proportions have not changed significantly in several years.

4. Other Characteristics

- Seventeen percent of newly committed youth received mandatory sentences. Repeat offenders remain constant at 8% in FY 2004-05 and FY 2005-06.
- The average age at first adjudication was 13.8 years for males and 14.3 years for females.
- Sixty-four percent of youth had one or more out-of-home placements. This is a 5% decrease from FY 2004-05.
- The percent of newly committed youth with no prior out-of-home placements has been steadily increasing. The percent of males and females with one prior out-of-home placement was similar, but 38% of males had no prior out-of-home placements, while only 19% of females had no prior out-of-home placements.
- The percent of females with a runaway history has been declining over the past few years: from 86% in FY 2003-04, to 81% in FY 2004-05, and now 79% in FY 2005-06. The percent of males with a runaway history has also decreased to 58% in FY 2005-06. In FY 2004-05 it was at 59% and 65% in FY 2003-04.
- The percent of newly committed youth in need of treatment level substance abuse services remained the same as last year at approximately 60%. The female population in need of treatment decreased slightly from 69% to 65%, and the male treatment population has increased slightly from 58% to 59%. Interestingly, the percent of females requiring prevention level substance abuse services dropped from 11% last year to 5% in FY 2005-06; subsequently, the percent of females requiring intermediate level services jumped from 19% in FY 2004-05 to 30% in FY 2005-06.
- Sixty-nine percent of newly committed youth had one or more prior adjudications, which is very close to 70% in FY 2004-05.
- Sixty percent of youth were committed for felony offenses in FY 2005-06, which is no change from FY 2004-05.
- The percent of “High-Moderate to Severe” assessed mental health needs for males increased to 60% in FY 2005-06 from 49% last year. There has been a steady incline of identified high mental health needs in males over the past few years. The percent of “Low Moderate/None to Slight” assessed mental

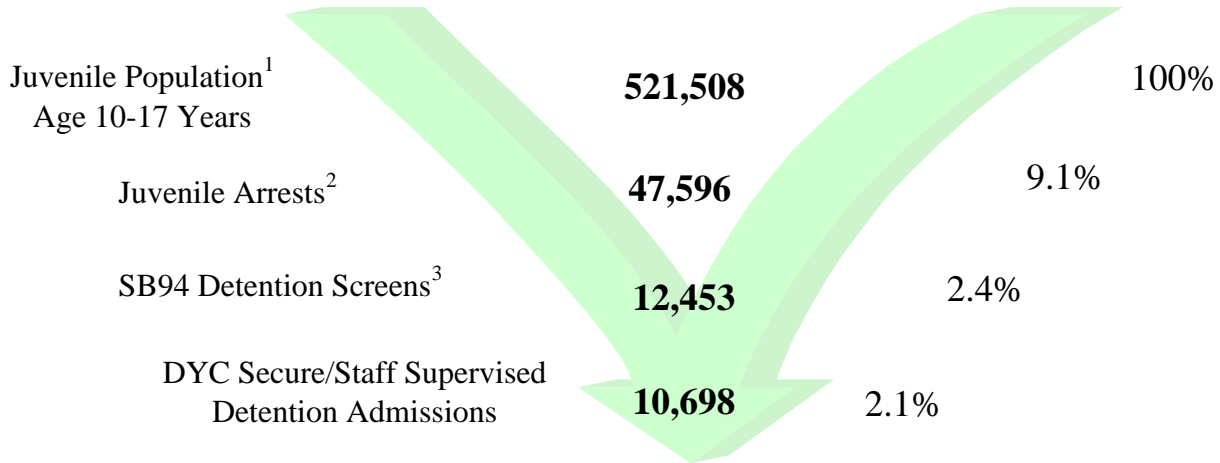
health needs for males decreased from 51% in FY 2004-05 to 40% in FY 2005-06. In contrast, the percent of “High-Moderate to Severe” assessed mental health needs for females decreased from 60% in FY 2004-05 to 53% in FY 2005-06 and “Low Moderate/None to Slight” assessed mental health needs increased from 40% in FY 2004-05 to 47% in FY 2005-06.

IV. PAROLE POPULATION Trends and Characteristics

- Parole ADP experienced its first increase in the past 5 years coming in at 508.7. This is a 4% increase from last year’s parole ADP of 490.3.
- Parole LOS declined from 8.0 months in FY 2003-04 to 7.1 months in FY 2004-05 to 6.4 months in FY 2005-06. This decline was expected as we continue to see the effects of the legislature that reduced mandatory parole length of stay from nine to six months.
- Eighty-two percent of youth were discharged from parole into their homes (including foster homes, step parents, spouses, single parents, etc.) during FY 2005-06. Thirteen percent discharged directly into Adult Jail/ Corrections. This statistic has remained relatively stable over the past few years.

Fiscal Year 2005-06

Juvenile Justice Filtering Process to Detention



	FY2001-02	FY2002-03	FY2003-04	FY2004-05	FY2005-06
Age 10-17 population ¹	505,748	510,681	520,797	518,930	521,508
Juvenile Arrests ²	54,531	54,008	45,836	48,105	47,596
Arrests as % of population	10.8%	10.6%	8.8%	9.3%	9.1%
SB94 Detention Screens ³	N/A	12,105	12,692	12,607	12,453
Detention Admissions	16,310	14,059	11,148	10,970	10,698
Admissions as % of Population	3.2%	2.8%	2.1%	2.1%	2.1%

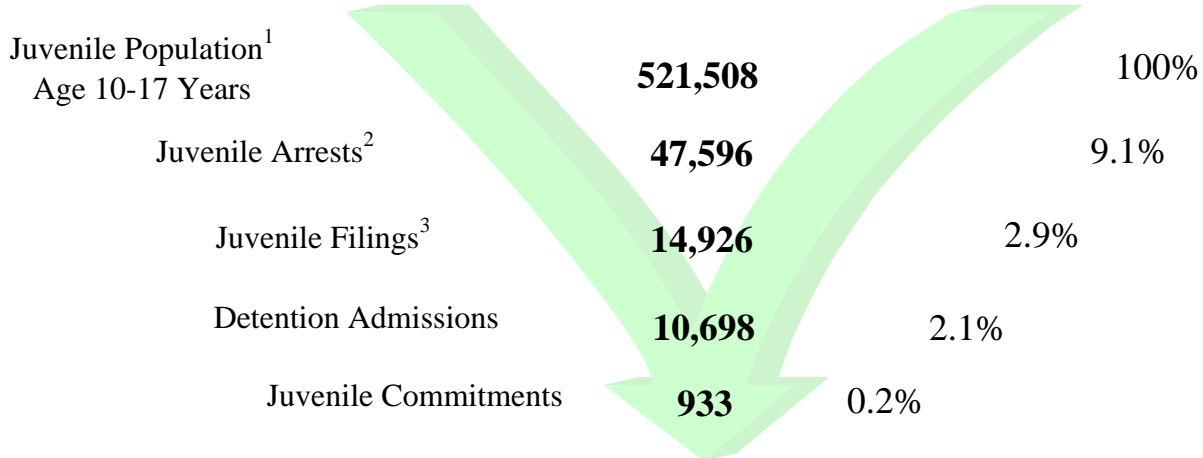
¹Colorado State Department of Local Affairs. Population data are reported for calendar years. Population estimates are based upon the 2000 census (<http://dola.colorado.gov/demog/demog.cfm>).

²Colorado Bureau of Investigations, *Crime in Colorado 2005*.

³Due to the TRAILS conversion process, screening data is not available for FY 2001-02.

Fiscal Year 2005-06

Juvenile Justice Filtering Process to Commitment



	FY2001-02	FY2002-03	FY2003-04	FY2004-05	FY2005-06
Age 10-17 Population ¹	505,748	510,681	520,797	518,930	521,508
Juvenile Arrests ²	54,531	54,008	45,836	48,105	47,596
Arrests as % of population	10.8%	10.6%	8.8%	9.3%	9.1%
Juvenile Delinquency Filings ³	17,675	17,179	15,981	15,156	14,926
Juvenile Detention Admissions	16,310	14,059	11,148	10,970	10,698
Number of Commitments	843	824	924	950	933
Commitments as % of Population	0.2%	0.2%	0.2%	0.2%	0.2%

¹Colorado State Department of Local Affairs. Population data are reported for calendar years. Population estimates are based upon the 2000 census (<http://dola.colorado.gov/demog/demog.cfm>).

²Colorado Bureau of Investigations, *Crime in Colorado 2005*.

³Colorado Judicial Branch FY2005-06 data.

ALL CLIENTS POPULATION DATA

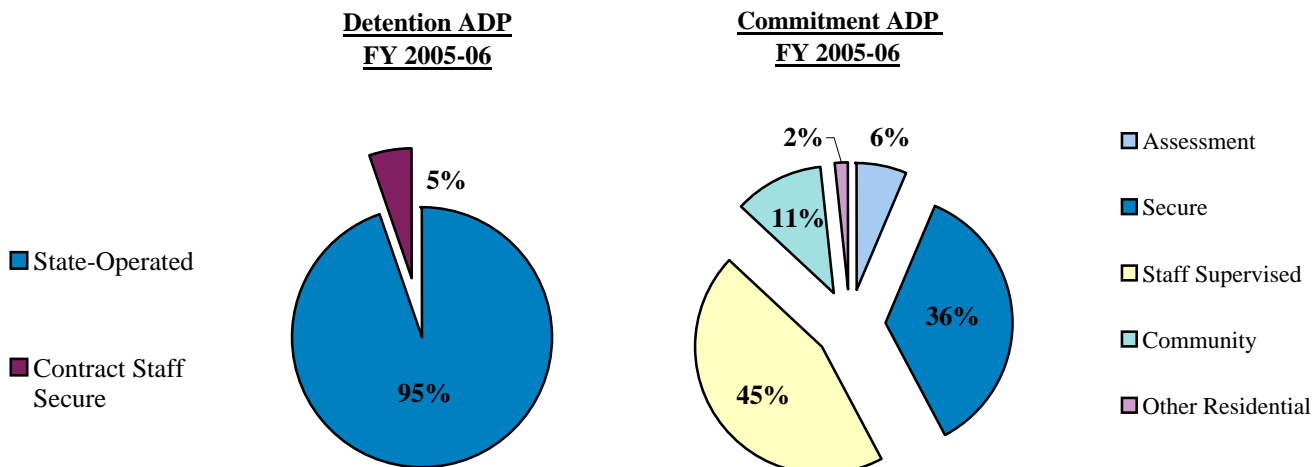
Fiscal Year 2005-06

DETAINED YOUTH	Clients Served¹	New Admits	ADP	LOS
State-Operated	6,993	10,182	403.8	14.0 days
Contract Staff Secure	469	516	22.5	15.6 days
Total Detained	7,215	10,698	426.3	14.1 days

COMMITTED YOUTH	Clients Served¹	ADP	LOS
Assessment	1,049	92.2	1.0 months
Secure	1,512	523.1	7.8 months
Staff Supervised	1,384	647.2	8.0 months
Community	567	165.5	2.3 months
Other Residential ²	N/A	25.4	N/A
Total Committed Residential	2,404	1,453.4	18.2

PAROLED YOUTH	Clients Served¹	New Admits	ADP	LOS
Total Paroled	1,863	898	508.7	6.4

STATEWIDE TOTAL	Clients Served¹	ADP	LOS
STATEWIDE TOTAL	9,058	2,388.4	25.1 months



¹Clients Served is an unduplicated count. Categorical totals are not a sum of individual program counts and are not available for all categories.

²Other Residential includes Group Homes, Job Corps, Hospitalizations, Shelter Care, etc.

NOTE: Throughout the Reference Manual, category sums may vary slightly from given totals due to rounding differences.

10 Year Detention Trends

Fiscal Year	Clients Served¹	Percentage Change +/-	New Admits	Percentage Change +/-	ADP²	Percentage Change +/-	LOS (Days)	Percentage Change +/-
1996-97	8,303	5.5%	14,652	5.8%	522.5	-3.5%	13.0	-5.1%
1997-98	8,785	5.8%	15,428	5.3%	591.8	13.3%	13.9	6.9%
1998-99	8,924	1.6%	15,212	-1.4%	602.4	1.8%	14.6	5.0%
1999-00	8,799	-1.4%	15,294	0.5%	589.1	-2.2%	14.3	-2.1%
2000-01	8,899	1.1%	14,921	-2.4%	583.0	-1.0%	14.5	1.4%
2001-02	8,916	0.2%	16,310	9.3%	545.0	-6.5%	15.7	8.3%
2002-03	8,242	-7.6%	14,059	-13.8%	497.1	-8.8%	15.3	-2.5%
2003-04	7,290	-11.6%	11,148	-20.7%	396.2	-20.3%	12.8	-16.3%
2004-05	7,252	-0.5%	10,970	-1.6%	402.0	1.5%	13.1	2.3%
2005-06	7,215	-0.5%	10,698	-2.5%	426.3	6.0%	14.1	7.6%

Fiscal Year 2005-06 was the second full year of detention operation under the legislative, statewide cap of 479 youth. The detention population increased 6.0% from last year's ADP of 402.0, which brought the fiscal year average up to 426.3 youth. Ninety-five percent of detained youth were held in State-Operated facilities. Since the detention cap was implemented, there has been a decreased reliance on Privately-Operated placements. Only 5% of this year's ADP was detained in a contracted secure or staff-secure facility. The average length of stay (LOS) for a youth in detention increased by one full day, or 7.6%, from last year's 13.1 LOS. The LOS increase corresponds with the increase in ADP. The number of clients served followed a four-year trend of decline, however the decrease of less than one percent for the past 2 years is markedly smaller than the eight and twelve percent decreases experienced in the first 2 years of the 4-year trend. The number of new detention admissions are also following a four-year trend of decline. Smaller declines were experienced in Fiscal Year 2005-06 and 2004-05, 3% and 2% respectively, while much larger declines of fourteen and twenty-one percent were seen in the two previous years. The number of new admissions to detention in FY 2005-06 hit a 17-year low. The number of new admits has not been this low since FY 1989-90, when there were 10,669 new detention admissions. Detention admission decreases were expected following the statewide capping legislation, as only the most serious youth offenders are held in detention, excluding the admission of truants, status offenders, and other less serious offenders.

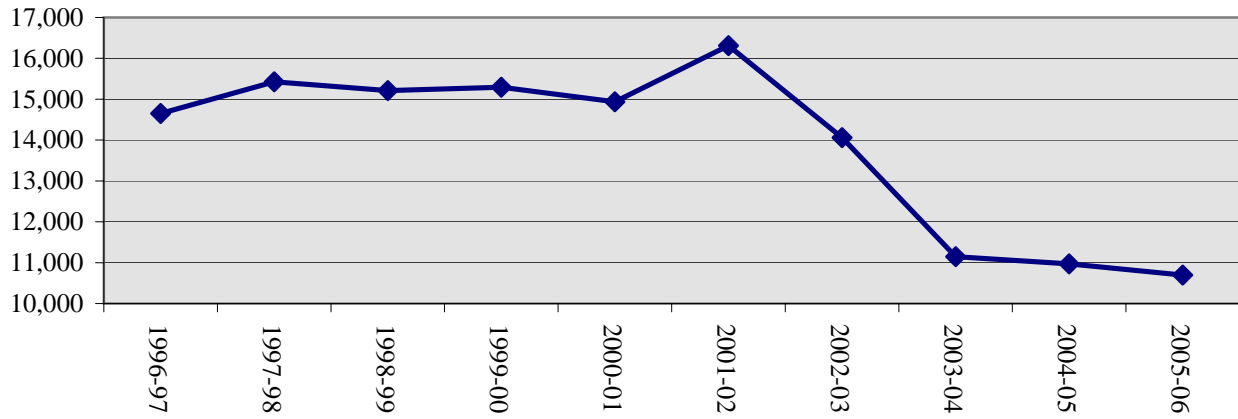
¹Clients served counts are unduplicated.

²The detention ADP includes youth in the Boot Camp / CAP program during FY 1996-97 through FY 2002-03.

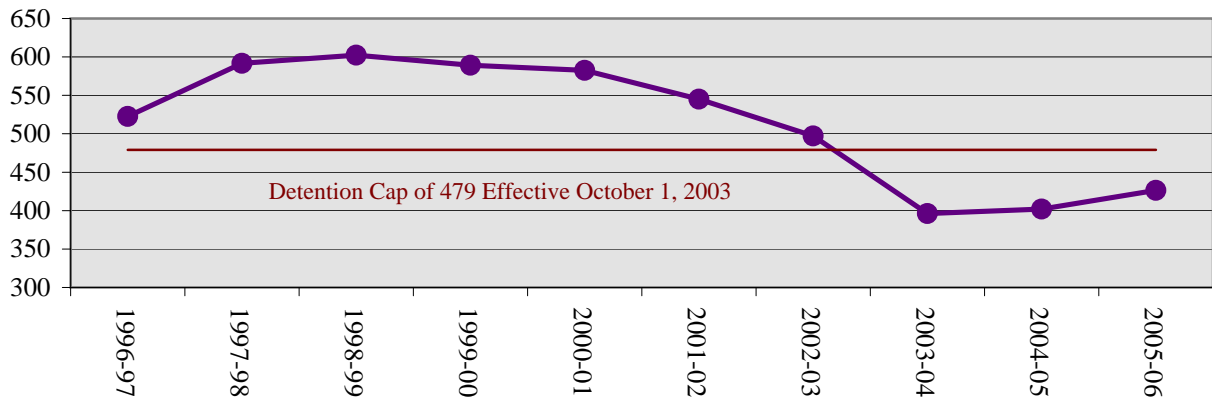
DETAINED YOUTH POPULATION TRENDS

FY 1996-97 Through FY 2005-06

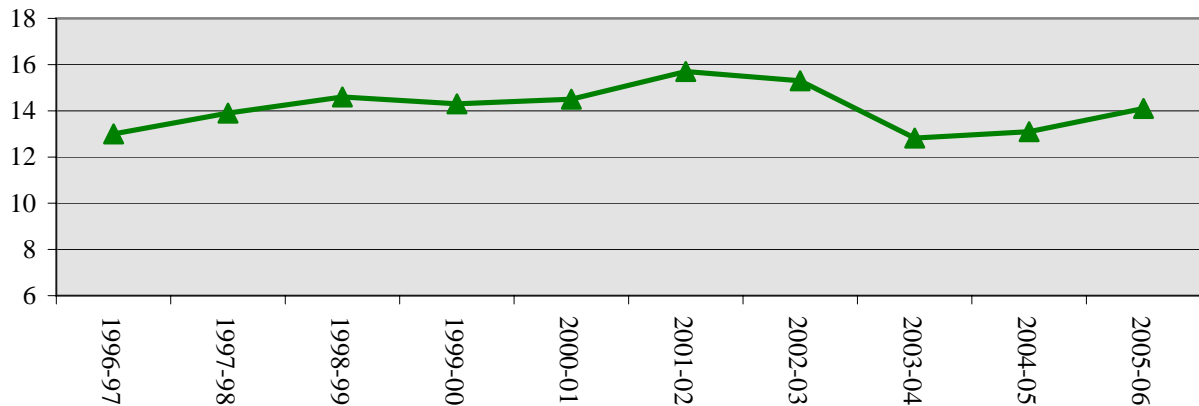
Trends in Detention Admissions



Trends in Detention ADP



Trends in Detention LOS (Days)



DETAINED YOUTH
POPULATION BY PROGRAM

FY 2005-06

	Clients Served ¹	New Admits	ADP	LOS (Days)
<i>State Operated</i>				
Adams YSC	558	764	24.8	11.4
Gilliam YSC	1,259	1,562	65.6	14.8
Grand Mesa YSC	370	522	21.0	13.5
Marvin W. Foote YSC	1,621	1,835	87.1	16.8
Mount View YSC	1,089	1,044	52.7	17.7
Platte Valley YSC	1,323	1,911	64.4	11.9
Pueblo YSC	587	750	30.7	14.8
Spring Creek YSC	1,372	1,794	57.6	11.4
<i>Subtotal State Operated</i>	<i>6,993</i>	<i>10,182</i>	<i>403.8</i>	<i>14.0</i>
<i>Privately Operated</i>				
Brown Center	25	24	1.0	16.1
Emily Griffith	39	47	1.6	11.9
Hilltop Youth Services	36	41	2.5	20.6
Midway Remmington	192	205	6.8	12.1
Prowers	11	10	0.8	28.1
Robert DeNier	116	134	7.6	20.3
Youthtrack Alamosa	51	55	2.3	14.0
<i>Subtotal Privately Operated</i>	<i>469</i>	<i>516</i>	<i>22.5</i>	<i>15.6</i>
STATEWIDE TOTAL	7,215	10,698	426.3	14.1

¹ Clients Served is an unduplicated count. Categorical totals are not a sum of individual program Clients Served.

DETAINED YOUTH POPULATION TRENDS

ADP BY PROGRAM

	FY 2001-02	FY 2002-03	FY 2003-04	FY 2004-05	FY 2005-06
<i>State Operated</i>					
Adams YSC	31.3	29.2	23.6	23.9	24.8
Gilliam YSC	71.7	73.7	62.6	62.8	65.6
Grand Mesa YSC	31.5	27.4	21.6	20.5	21.0
Marvin Foote YSC	79.4	68.5	74.6	80.8	87.1
Mount View YSC	54.8	49.6	47.8	47.3	52.7
Platte Valley YSC	74.2	70.4	62.2	61.4	64.4
Pueblo YSC	42.1	41.6	27.7	29.1	30.7
Spring Creek YSC	81.5	67.7	56.2	53.5	57.6
<i>Subtotal State Operated</i>	<i>466.5</i>	<i>428.2</i>	<i>376.4</i>	<i>379.2</i>	<i>403.8</i>
<i>Privately Operated</i>					
Brown Center	0.0	0.0	1.3	1.5	1.0
Colorado West	2.4	1.4	1.4	0.0	0.0
Dahlia Street	27.0	24.5	0.7	0.0	0.0
Emily Griffith	0.0	0.0	0.4	1.6	1.6
Gateway (Central)	0.0	0.0	0.0	0.0	0.0
Gateway (Southern)	1.6	1.2	0.0	0.0	0.0
Hilltop Youth Services ¹	6.5	2.7	1.9	2.7	2.5
LaPlata Youth Services	0.0	0.0	0.0	0.0	0.0
Midway Shelter	8.6	7.0	0.2	0.0	0.0
Midway Remmington	0.0	0.0	4.4	6.6	6.8
Moffat County	0.0	0.0	0.0	0.0	0.0
Prowers	0.0	0.8	0.6	0.8	0.8
Robert DeNier	13.2	12.0	7.4	7.1	7.6
Shiloh	0.0	0.5	0.0	0.0	0.0
Trailhead	0.3	1.2	0.0	0.0	0.0
Youthtrack Alamosa	6.1	4.2	1.5	2.5	2.3
Youthtrack Fillmore	6.7	6.5	0.0	0.0	0.0
Community Accountability ²	6.1	7.1	0.0	0.0	0.0
<i>Subtotal Privately Operated</i>	<i>78.5</i>	<i>68.9</i>	<i>19.8</i>	<i>22.8</i>	<i>22.5</i>
STATEWIDE DETENTION	545.0	497.1	396.2	402.0	426.3

¹Includes Brown Center, Operated by Hilltop Youth Services, during FY 2001-02 and FY 2002-03.

²The detention ADP includes youth in the Community Accountability Program during FY 2001-02 through FY 2002-03.

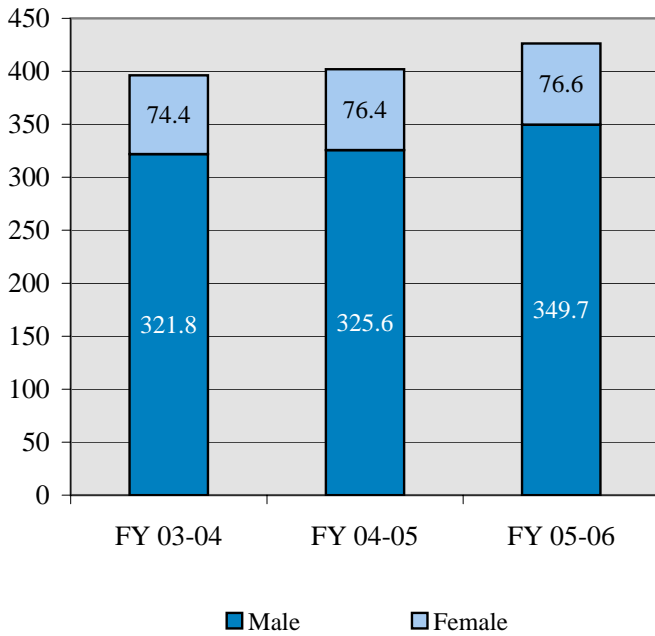
DETAINED YOUTH
DEMOGRAPHIC TRENDS

	FY 2003-04				FY 2004-05				FY 2005-06			
	New Admits	%	ADP	LOS ¹	New Admits	%	ADP	LOS ¹	New Admits	%	ADP	LOS ¹
GENDER												
Male	8,552	76.7%	321.8	13.5	8,385	76.4%	325.6	13.9	8,304	77.6%	349.7	14.8
Female	2,596	23.3%	74.4	10.5	2,585	23.6%	76.4	10.5	2,394	22.4%	76.6	11.4
TOTAL	11,148	100%	396.2	12.8	10,970	100%	402.0	13.1	10,698	100%	426.3	14.1
ETHNICITY												
Anglo-American	4,703	42.2%	167.2	12.6	4,866	44.3%	171.9	12.6	4,541	42.4%	169.3	13.2
African-American	1,618	14.5%	61.8	14.1	1,720	15.7%	65.9	13.8	1,720	16.1%	75.8	15.1
Hispanic/Latino	3,996	35.8%	143.3	13.0	4,034	36.8%	151.4	13.5	4,131	38.6%	169.3	14.6
Native American	133	1.2%	5.4	15.2	142	1.3%	6.4	16.3	151	1.4%	6.4	15.5
Asian-American	97	0.9%	3.0	10.7	64	0.6%	1.9	11.7	64	0.6%	2.6	14.0
Other	601	5.4%	15.5	11.9	144	1.3%	4.5	11.1	91	0.9%	2.8	11.0
AGE												
9 Years	0	0.0%	0.0	0.0	3	0.0%	0.0	3.3	0	0.0%	0.0	0.0
10 Years	15	0.1%	0.2	4.4	20	0.2%	0.3	5.7	17	0.2%	0.2	5.0
11 Years	76	0.7%	1.7	7.5	57	0.5%	1.7	9.3	73	0.7%	1.8	8.9
12 Years	289	2.6%	7.1	8.2	224	2.0%	7.3	11.9	223	2.1%	8.0	13.0
13 Years	731	6.6%	25.3	12.1	677	6.2%	22.9	12.0	656	6.1%	25.2	13.4
14 Years	1,522	13.7%	54.2	12.7	1,475	13.4%	55.0	13.3	1,449	13.5%	56.7	13.3
15 Years	2,448	22.0%	90.4	13.3	2,483	22.6%	90.1	13.1	2,429	22.7%	99.5	14.3
16 Years	2,861	25.7%	105.3	13.4	2,914	26.6%	113.5	13.9	2,821	26.4%	112.2	14.3
17 Years	3,177	28.5%	111.5	12.8	3,094	28.2%	110.6	12.8	3,015	28.2%	122.4	14.5
18 Years	17	0.2%	0.3	6.8	17	0.2%	0.4	6.7	11	0.1%	0.1	2.5
19 Years and Older	4	0.0%	0.1	0.8	6	0.1%	0.2	13.0	4	0.0%	0.3	24.8
Data Not Available	8	0.1%	0.2	N/A	0	0.0%	0.0	N/A	0	0.0%	0.0	N/A
Average Age at Admission			16.0 Years				16.0 Years				16.0 Years	
Prior Admissions												
None	4,093	36.7%	99.0	8.6	4,078	37.2%	104.8	9.1	3,986	37.3%	117.0	10.5
One	2,357	21.1%	84.9	13.0	2,266	20.7%	87.7	13.8	2,303	21.5%	97.4	14.8
Two or more	4,698	42.1%	212.3	16.4	4,626	42.2%	209.5	16.3	4,409	41.2%	211.9	17.0
Program Type												
State Operated	10,677	95.8%	376.4	12.7	10,428	95.1%	379.2	13.0	10,182	95.2%	403.8	14.0
Privately Operated	471	4.2%	19.8	15.4	542	4.9%	22.8	15.2	516	4.8%	22.5	15.6

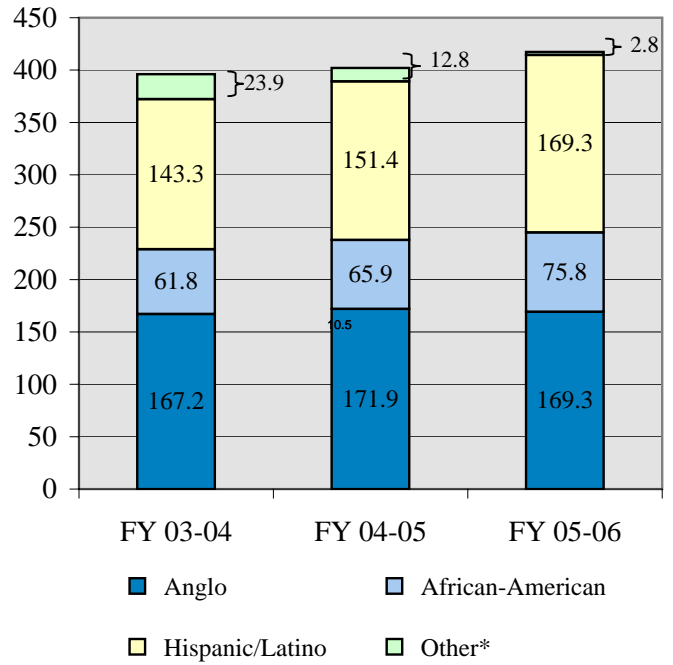
¹Detained LOS expressed in days.

DETAINED YOUTH DEMOGRAPHIC TRENDS

Detention ADP By Gender

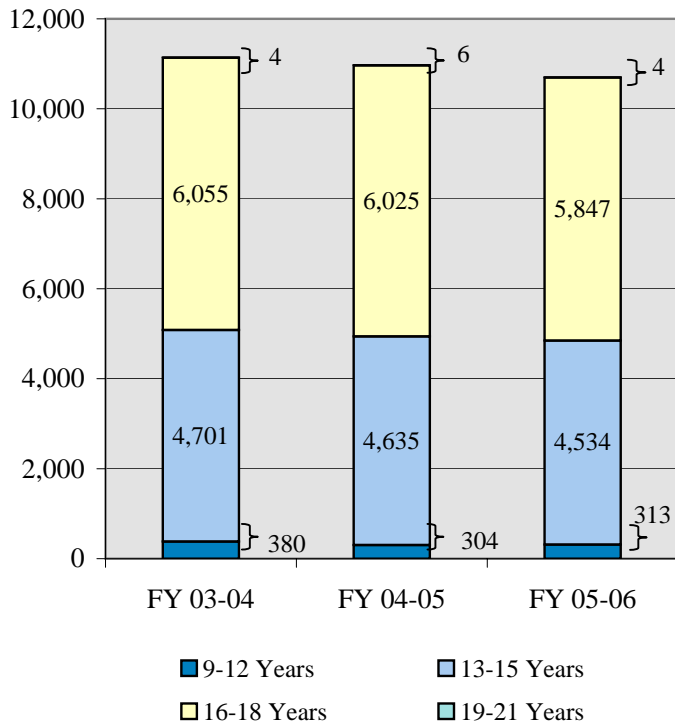


Detention ADP by Ethnicity

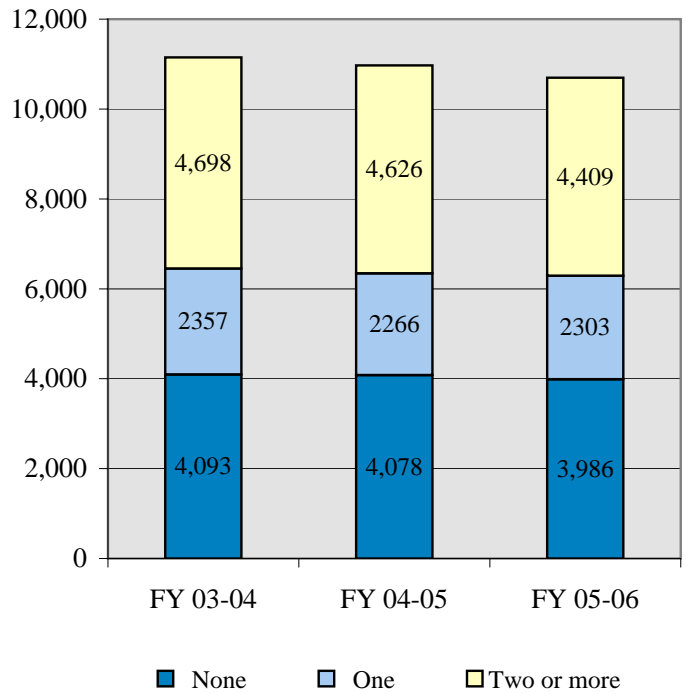


*Other includes Native American, Asian American, etc.

Detention Admissions by Age at Admissions



Detention Admissions by Prior Adjudications



DETAINED YOUTH

NEW ADMIT DEMOGRAPHIC TRENDS BY GENDER

	MALES						FEMALES					
	FY 2003-04		FY 2004-05		FY 2005-06		FY 2003-04		FY 2004-05		FY 2005-06	
	N	%	N	%	N	%	N	%	N	%	N	%

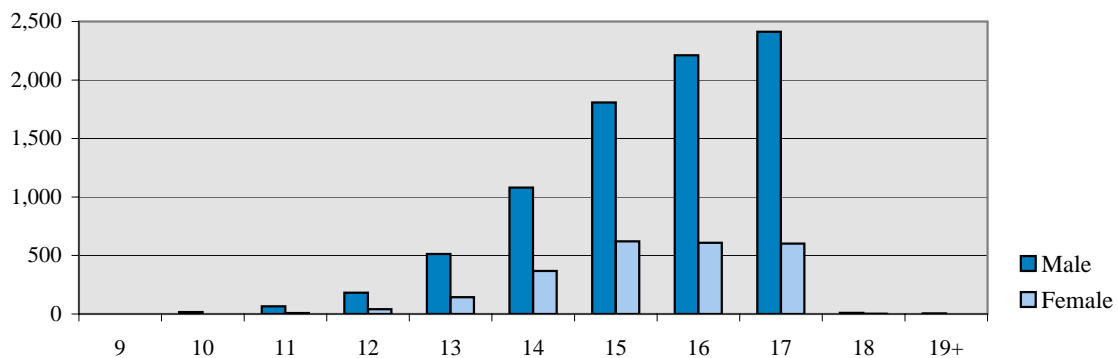
DEMOGRAPHIC DATA

Ethnicity												
Anglo-American	3,569	41.7%	3,578	42.7%	3,393	40.9%	1,134	43.7%	1,288	49.8%	1,148	48.0%
African-American	1,271	14.9%	1,364	16.3%	1,436	17.3%	347	13.4%	356	13.8%	284	11.9%
Hispanic/Latino	3,132	36.6%	3,183	38.0%	3,245	39.1%	864	33.3%	851	32.9%	886	37.0%
Native American	89	1.0%	110	1.3%	119	1.4%	44	1.7%	32	1.2%	32	1.3%
Asian-American	71	0.8%	52	0.6%	53	0.6%	26	1.0%	12	0.5%	11	0.5%
Other	420	4.9%	98	1.2%	58	0.7%	181	7.0%	46	1.8%	33	1.4%
TOTAL NEW ADMISSIONS	8,552	100%	8,385	101%	8,304	100%	2,596	100%	2,585	100%	2,394	100%

Age at Admission												
9 Years	0	0.0%	3	0.0%	0	0.0%	0	0.0%	0	0.0%	0	0.0%
10 Years	14	0.2%	17	0.2%	17	0.2%	1	0.0%	3	0.1%	0	0.0%
11 Years	64	0.7%	52	0.6%	65	0.8%	11	0.4%	5	0.2%	8	0.3%
12 Years	240	2.8%	163	1.9%	182	2.2%	49	1.9%	61	2.4%	41	1.7%
13 Years	548	6.4%	506	6.0%	513	6.2%	183	7.0%	171	6.6%	143	6.0%
14 Years	1,086	12.7%	1,067	12.7%	1,081	13.0%	436	16.8%	408	15.8%	368	15.4%
15 Years	1,781	20.8%	1,780	21.2%	1,808	21.8%	667	25.7%	703	27.2%	621	25.9%
16 Years	2,223	26.0%	2,293	27.3%	2,212	26.6%	638	24.6%	621	24.0%	609	25.4%
17 Years	2,571	30.1%	2,484	29.6%	2,413	29.1%	606	23.3%	610	23.6%	602	25.1%
18 Years	16	0.2%	15	0.2%	9	0.1%	1	0.0%	2	0.1%	2	0.1%
19 Years and Older	3	0.0%	5	0.1%	4	0.0%	1	0.0%	1	0.0%	0	0.0%
Data Not Available	6	0.1%	0	0.0%	0	0.0%	3	0.1%	0	0.0%	0	0.0%
Average Age at Admission	16.0 Years		16.1 Years		16.0 Years		15.8 Years		15.9 Years		15.9 Years	

Prior Admissions												
None	3,970	34.2%	2,978	35.5%	2,971	35.8%	1,035	39.9%	1,100	42.6%	1,015	42.4%
One	2,196	18.9%	1,715	20.5%	1,806	21.7%	525	20.2%	551	21.3%	497	20.8%
Two or more	5,423	46.8%	3,692	44.0%	3,527	42.5%	1,036	39.9%	934	36.1%	882	36.8%

FY 2005-06 Age at Admission



COMMITTED YOUTH POPULATION TRENDS

Ten Year Commitment Trends

Fiscal Year	Clients Served¹	Percentage Change +/-	New Commits	Percentage Change +/-	Residential ADP²	Percentage Change +/-	LOS (Months)	Percentage Change +/-
1996-97	1,891	6.9%	762	10.0%	929.3	21.8%	14.5	5.8%
1997-98	2,046	8.2%	781	2.5%	973.5	4.8%	15.1	4.1%
1998-99	2,269	10.9%	878	12.4%	1,112.2	14.2%	15.6	3.3%
1999-00	2,544	12.1%	848	-3.4%	1,198.3	7.7%	15.5	-0.6%
2000-01	2,702	6.2%	766	-9.7%	1,251.8	4.5%	16.3	5.2%
2001-02	2,747	1.7%	843	10.1%	1,266.8	1.2%	17.7	8.6%
2002-03	2,689	-2.1%	824	-2.3%	1,327.8	4.8%	19.5	10.2%
2003-04	2,840	5.6%	924	12.1%	1,385.8	4.4%	18.9	-3.1%
2004-05	2,974	4.7%	950	2.8%	1,453.5	4.9%	18.8	-0.5%
2005-06	3,233	8.7%	933	-1.8%	1,453.4	0.0%	18.2	-3.2%

During FY 2005-06, the commitment population experienced a year of growth, decline, and nearly no change at all, depending on which commitment category is in focus. Residential ADP experienced a minuscule (0.1) decrease, going from 1,453.5 in FY 2004-05 to 1,453.4 in FY 2005-06. Clients served increased by 8.7%, this is the largest increase since FY 1999-00. The number of new commitments decreased by 2%, with 933 in FY 2005-06. For the past 10 years, the number of new commitments have increased and dropped, remaining between 750 and 950 each year. Residential committed length of stay (LOS) also experienced a decline, dropping 3.2% to 18.2 months in FY 2005-06 from 18.8 months in FY 2004-05. This is the third consecutive year of decline for LOS, after experiencing a 10-year high in FY 2002-03.

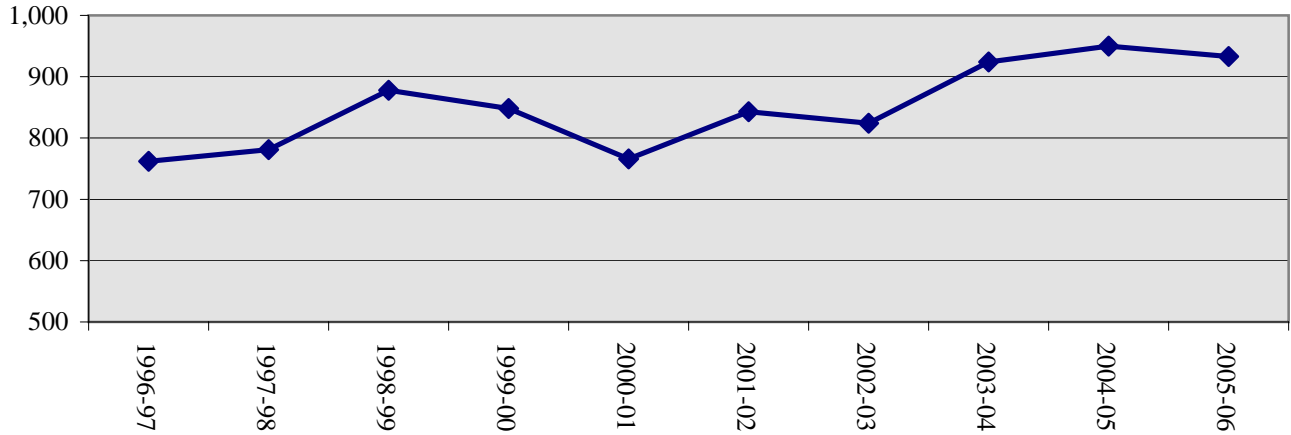
¹Clients Served is an unduplicated count.

²Residential ADP includes secure, staff-supervised, and community based residential treatment programs.

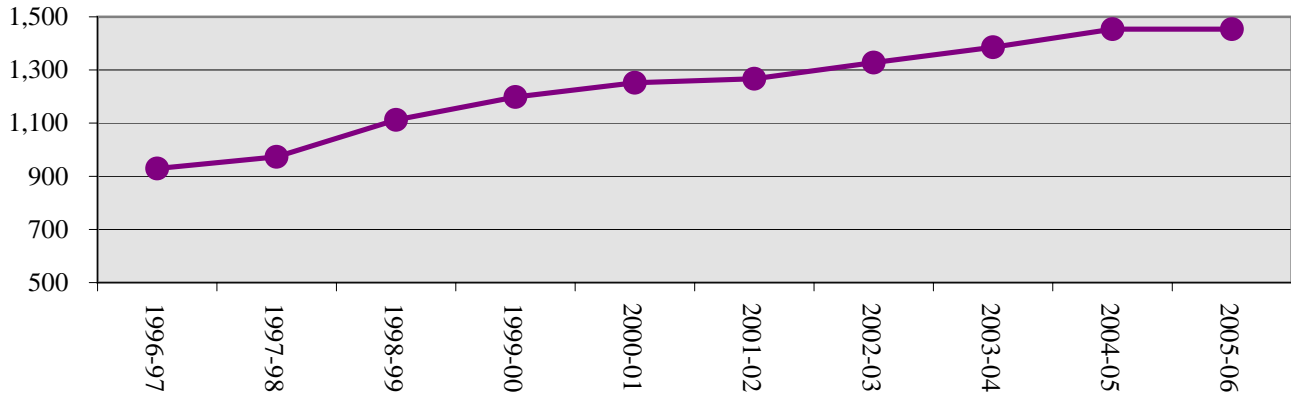
COMMITTED YOUTH POPULATION TRENDS

FY 1996-97 Through FY 2005-06

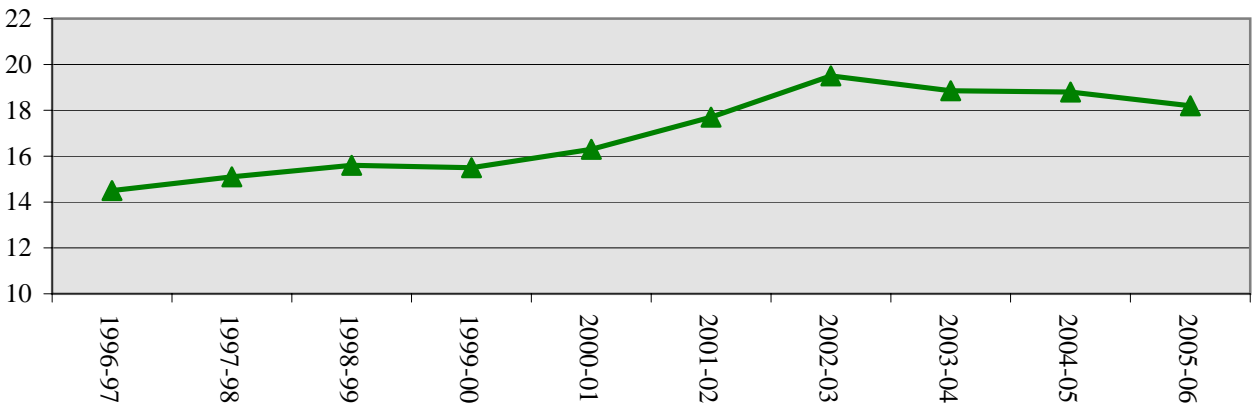
Trends in New Commitments



Trends in Residential ADP



Trends in Residential LOS (Months)



COMMITTED YOUTH
POPULATION BY PROGRAM

FY 2005-06

	Clients Served ¹	ADP
Assessment		
Grand Mesa YSC	84	5.1
Marvin W. Foote YSC	102	0.3
Mount View YSC	437	27.5
Platte Valley YSC	284	21.1
Ridge View YSC	209	23.3
Robert Denier YSC	18	0.8
Spring Creek YSC	200	13.2
Zeb Pike YSC	7	1.0
Total Assessment	1,049	92.2
Secure		
<i>State Operated</i>		
Grand Mesa YSC	138	38.4
Lookout Mountain YSC	374	213.1
Marvin W. Foote YSC	293	28.0
Mount View YSC	482	59.5
Platte Valley YSC	299	64.4
Spring Creek YSC	214	35.8
Zeb Pike YSC	79	39.4
<i>Subtotal State Operated</i>	<i>1,455</i>	<i>478.5</i>
<i>Privately Operated</i>		
Betty K. Marler Center	67	35.1
Robert Denier YSC	35	9.6
<i>Subtotal Privately Operated</i>	<i>102</i>	<i>44.6</i>
Total Secure	1,512	523.1
Staff-Supervised (Contract)		
Brown Center	8	2.0
Cedar Springs	46	14.9
Childrens Ark	1	0.2
Devereux Cleo Wallace	44	15.9
Griffith Centers - Grand Ave.	8	1.9
Griffith Centers for Children, Inc.	44	17.0
El Pueblo Ranch	26	8.7
Excelsior Youth Center	3	1.8
Glen Mills Schools	1	1.0
Hilltop	66	17.3
Jefferson Hills	122	44.3
Jefferson Hills Aurora	124	63.5
Kidz Ark	11	5.0
Mountain Star Center	7	4.8
Ridgeview YSC	808	413.2
Southern Peaks	77	28.6
Turning Point	22	7.1
Total Staff-Supervised (Contract)	1,384	647.2

¹Clients Served is an unduplicated count. Categorical totals are not a sum of individual program counts and are not available for all categories.

COMMITTED YOUTH POPULATION
BY PROGRAM

FY 2005-06

	Clients Served ¹	ADP
Community (Contract)		
Alternative Youth Adventures	143	18.9
Arapahoe House Inc.	1	0.0
Boulder Community Treatment Center	2	0.5
Boulder County Social Services	1	0.5
Community Corrections & Work Release	13	3.6
Dale House	48	11.2
Daybreak-Princeton	25	6.5
DAYS	40	9.7
Garfield County Community Corrections	1	0.5
Griffith Center	17	6.6
Griffith Center - Chins Up	1	0.6
Gateway	4	1.1
Harmony Host Homes Inc.	2	0.5
Hilltop	14	1.6
Kidz Ark New Raymer Ranch	1	0.3
Longmont Community Treatment Center	1	0.4
Lost and Found	4	1.0
Lost and Found - Morrison	10	2.4
Lost and Found - Independent Living	7	0.9
Lutheran Family Services of Colorado	1	0.2
Lyle Alzado Youth Home	9	1.9
Miranda Place	4	0.8
Prairie View	6	1.9
Restitution Center	2	0.2
ROP - Canyon State Academy	3	1.4
Synergy	20	6.3
Third Way Center ²	8	10.6
Third Way Center - York	14	2.9
Third Way Center - Lincoln	17	4.5
Turning Point	1	0.7
Turning Point Center - Youth and Family	76	22.1
Turning Point - Mathews St.	26	8.5
Youthtrack Excel	35	8.0
Youthtrack Jeffco	31	7.5
Youthtrack San Louis Valley	11	3.3
Youthtrack Work and Learn	40	8.8
Youth Ventures ²	34	9.3
Total Community (Contract)	567	165.5
Other Residential³	N/A	25.4

STATEWIDE COMMITMENT RESIDENTIAL

2,404

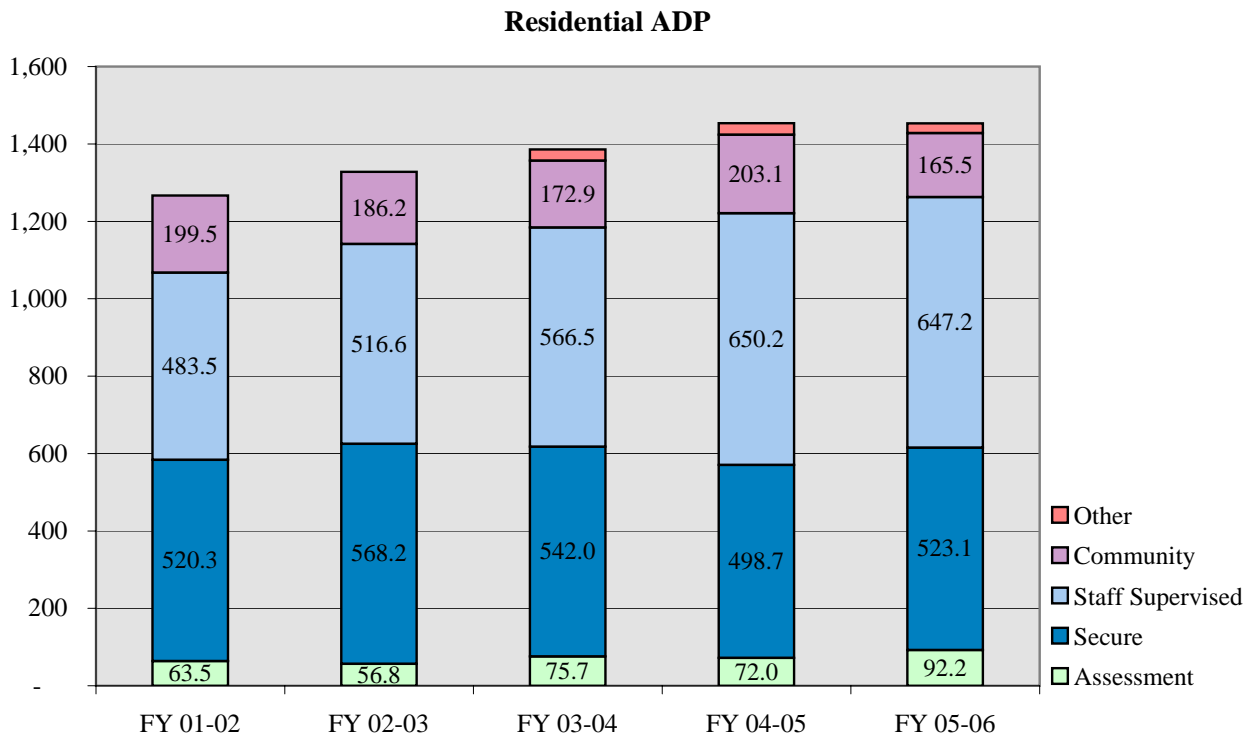
1,453.4

¹Clients Served is an unduplicated count. Categorical totals are not a sum of individual program counts and are not available for all categories.

²Represents a sum of two or more program types or locations

COMMITTED YOUTH POPULATION TRENDS
AVERAGE DAILY POPULATION

	FY 2001-02	FY 2002-03	FY 2003-04	FY 2004-05	FY 2005-06
Assessment	63.5	56.8	75.7	72.0	92.2
Secure	520.3	568.2	542.0	498.7	523.1
Staff Supervised	483.5	516.6	566.5	650.2	647.2
Community	199.5	186.2	172.9	203.1	165.5
Other Residential ¹	0.0	0.0	28.8	29.5	25.4
Total Residential ADP	1,266.8	1,327.8	1,385.8	1,453.5	1,453.4



¹Other Residential includes Group Homes, Job Corps, Hospitalizations etc.

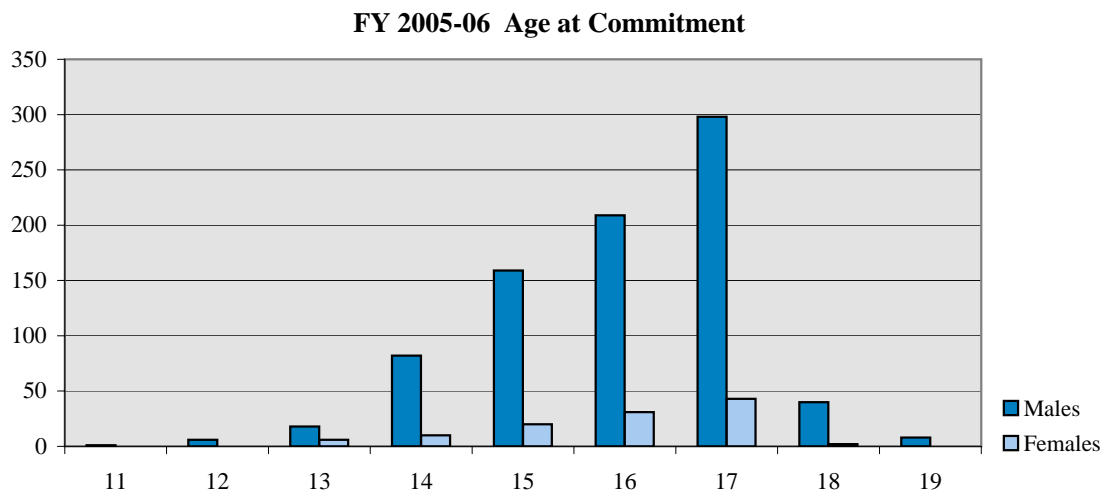
COMMITTED YOUTH
DEMOGRAPHIC TRENDS

	FY 2003-04			FY 2004-05			FY 2005-06		
	New Commits	%	ADP	New Commits	%	ADP	New Commits	%	ADP
GENDER									
Male	793	85.8%	1,225.4	810	85.3%	1,271.2	821	88.0%	1,268.4
Female	131	14.2%	160.4	140	14.7%	182.3	112	12.0%	185.0
TOTAL	924	100%	1,385.8	950	100.0%	1,453.5	933	100.0%	1,453.4
ETHNICITY									
Anglo-American	443	47.9%	629.4	417	43.9%	673.0	374	40.1%	632.2
African-American	157	17.0%	242.8	160	16.8%	258.3	167	17.9%	262.5
Hispanic/Latino	284	30.7%	455.1	339	35.7%	473.0	361	38.7%	514.3
Native American	14	1.5%	23.7	22	2.3%	26.9	22	2.4%	25.9
Asian-American	10	1.1%	13.4	4	0.4%	12.4	3	0.3%	7.3
Other	16	1.7%	21.3	8	0.8%	10.0	6	0.6%	11.2
AGE¹									
11 Years	1	0.0%	0.0	0	0.0%	0.0	1	0.1%	0.0
12 Years	7	0.8%	2.0	6	0.6%	0.1	6	0.6%	0.3
13 Years	17	1.8%	5.7	30	3.2%	12.2	24	2.6%	5.0
14 Years	82	8.9%	27.3	83	8.7%	33.9	92	9.9%	45.2
15 Years	189	20.5%	105.2	183	19.3%	93.0	179	19.2%	110.1
16 Years	274	29.7%	242.6	256	26.9%	247.9	240	25.7%	213.9
17 Years	318	34.4%	380.7	325	34.2%	376.5	341	36.5%	376.4
18 Years	34	3.7%	407.6	53	5.6%	426.4	42	4.5%	439.4
19 Years or Older	2	0.2%	214.8	14	1.5%	263.4	8	0.9%	263.1
Average Age at Commitment:	16.5 Years			16.5 Years			16.4 Years		
Rate of New Commitments per 10,000 Juvenile Population	17.7			18.3			17.9		

¹New Commitment counts for each age category correspond to age at commitment. ADP figures for each age category, however, are based on the youth's age on the last day of the fiscal year.

**NEW COMMITMENT TRENDS
BY GENDER**

	MALES						FEMALES					
	FY 2003-04		FY 2004-05		FY 2005-06		FY 2003-04		FY 2004-05		FY 2005-06	
	N	%	N	%	N	%	N	%	N	%	N	%
DEMOGRAPHIC DATA¹												
Ethnicity												
Anglo:	375	47.3%	343	42.3%	316	38.5%	68	51.9%	74	52.9%	58	51.8%
African-American:	134	16.9%	137	16.9%	151	18.4%	23	17.6%	23	16.4%	16	14.3%
Hispanic/Latino:	247	31.1%	304	37.5%	327	39.8%	37	28.2%	35	25.0%	34	30.4%
Native American:	13	1.6%	16	2.0%	20	2.4%	1	0.8%	6	4.3%	2	1.8%
Asian-American:	9	1.1%	4	0.5%	2	0.2%	1	0.8%	0	0.0%	1	0.9%
Other:	15	1.9%	6	0.7%	5	0.6%	1	0.8%	2	1.4%	1	0.9%
TOTAL NEW COMMITMENTS	793	100%	810	100%	821	100%	131	100%	140	100%	112	100%
Age												
11 Years	1	0.1%	0	0.0%	1	0.1%	0	0.0%	0	0.0%	0	0.0%
12 Years	3	0.4%	6	0.7%	6	0.7%	0	0.0%	0	0.0%	0	0.0%
13 Years	15	1.9%	27	3.3%	18	2.2%	4	3.1%	3	2.1%	6	5.4%
14 Years	64	8.1%	71	8.8%	82	10.0%	2	1.5%	12	8.6%	10	8.9%
15 Years	160	20.2%	151	18.6%	159	19.4%	18	13.7%	32	22.9%	20	17.9%
16 Years	239	30.1%	206	25.4%	209	25.5%	29	22.1%	50	35.7%	31	27.7%
17 Years	278	35.1%	290	35.8%	298	36.3%	35	26.7%	35	25.0%	43	38.4%
18 Years	31	3.9%	46	5.7%	40	4.9%	40	30.5%	7	5.0%	2	1.8%
19 Years	2	0.3%	13	1.6%	8	1.0%	3	2.3%	1	0.7%	0	0.0%
Average Age at Commitment	16.4 Yrs		16.5 Yrs		16.5 Yrs		16.1 Yrs		16.4 Yrs		16.5 Yrs	



¹Data based on new commitments.

**NEW COMMITMENT TRENDS
BY GENDER**

	MALES						FEMALES					
	FY 2003-04		FY 2004-05		FY 2005-06		FY 2003-04		FY 2004-05		FY 2005-06	
	N	%	N	%	N	%	N	%	N	%	N	%

NEW COMMITMENT PROFILE

Prior Adjudications												
None	191	24.1%	216	26.7%	241	29.4%	48	36.6%	71	50.7%	48	42.9%
One	227	28.6%	253	31.2%	245	29.8%	46	35.1%	36	25.7%	41	36.6%
Two or more	370	46.7%	341	42.1%	335	40.8%	36	27.5%	33	23.6%	23	20.5%
Data Not Available	5	0.6%	0	0.0%	0	0.0%	1	0.8%	0	0.0%	0	0.0%
TOTAL NEW COMMITMENTS	793	100%	810	100%	821	100%	131	100%	140	100%	112	100%

Prior Out-of-Home Placements												
None	245	30.9%	275	34.0%	315	38.4%	18	13.7%	24	17.1%	21	18.8%
One	185	23.3%	190	23.5%	198	24.1%	30	22.9%	29	20.7%	22	19.6%
Two or more	363	45.8%	345	42.6%	308	37.5%	83	63.4%	87	62.1%	69	61.6%

Runaway History ¹												
No runaway history	263	33.2%	302	37.3%	302	36.8%	17	13.0%	25	17.9%	22	19.6%
Runaway history	519	65.4%	481	59.4%	474	57.7%	113	86.3%	114	81.4%	88	78.6%
Data Not Available	11	1.4%	27	3.3%	45	5.5%	1	0.8%	1	0.7%	2	1.8%

Assessed Substance Abuse Counseling Needs ²												
Prevention	117	14.8%	119	14.7%	122	14.9%	14	10.7%	16	11.4%	6	5.4%
Intervention	251	31.7%	197	24.3%	217	26.4%	40	30.5%	27	19.3%	33	29.5%
Treatment	420	53.0%	467	57.7%	481	58.6%	76	58.0%	96	68.6%	73	65.2%
Data Not Available	5	0.6%	27	3.3%	1	0.1%	1	0.8%	1	0.7%	0	0.0%

Assessed Mental Health Needs ³												
High-Moderate to Severe	219	39.5%	385	49.2%	490	60.2%	41	40.2%	79	60.3%	58	52.7%
Low Moderate/None to Slight	336	60.5%	398	50.8%	324	39.8%	61	59.8%	52	39.7%	52	47.3%
Data Not Available	238	N/A	27	N/A	7	N/A	29	N/A	9	N/A	2	N/A

Average Age at First Adjudication:	14.1	13.8	13.8	14.2	14.5	14.3
------------------------------------	------	------	------	------	------	------

¹Refers to running away from a secure or nonsecure placement as well as from home during the 12 months prior to commitment.

²Substance abuse history and treatment needs are assessed within one month of commitment. Youth with minimal substance abuse history and/or treatment needs are identified for prevention services whereas those reporting the greatest history of abuse and treatment needs are targeted for substance abuse treatment services.

³Colorado Client Assessment Record used to assess mental health needs within one month of commitment. Percentages are based on total CCARs given and do not include missing data.

NEW COMMITMENT TRENDS

BY GENDER

	MALES						FEMALES					
	FY 2003-04		FY 2004-05		FY 2005-06		FY 2003-04		FY 2004-05		FY 2005-06	
	N	%	N	%	N	%	N	%	N	%	N	%

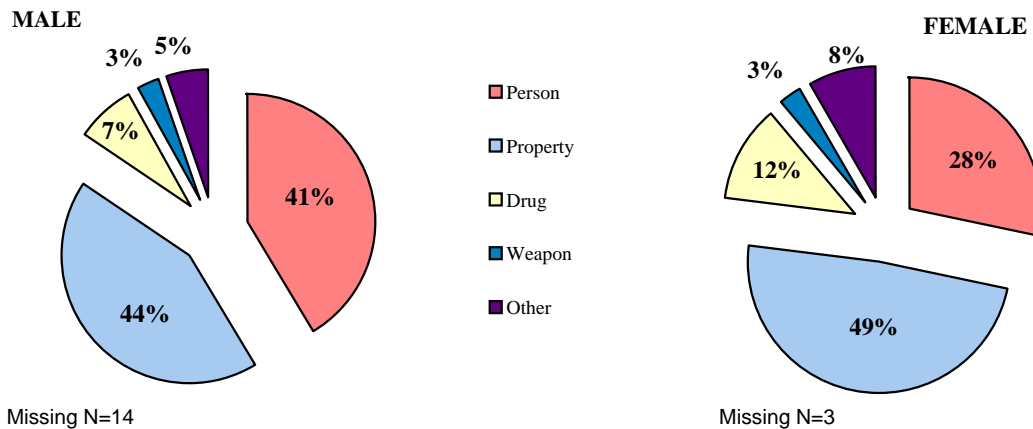
COMMITMENT DATA

Offense Type	FY 2003-04		FY 2004-05		FY 2005-06		FY 2003-04		FY 2004-05		FY 2005-06	
	N	%	N	%	N	%	N	%	N	%	N	%
Person Felony	132	16.6%	148	18.3%	169	20.6%	15	11.5%	18	12.9%	10	8.9%
Person Misdemeanor	132	16.6%	144	17.8%	137	16.7%	26	19.8%	32	22.9%	20	17.9%
Property Felony	309	39.0%	289	35.7%	272	33.1%	39	29.8%	35	25.0%	32	28.6%
Property Misdemeanor	73	9.2%	61	7.5%	71	8.6%	16	12.2%	23	16.4%	21	18.8%
Drug Felony	53	6.7%	57	7.0%	50	6.1%	14	10.7%	11	7.9%	12	10.7%
Drug Misdemeanor	12	1.5%	7	0.9%	7	0.9%	2	1.5%	2	1.4%	1	0.9%
Weapons Felony	7	0.9%	10	1.2%	9	1.1%	0	0.0%	1	0.7%	2	1.8%
Weapons Misdemeanor	6	0.8%	11	1.4%	15	1.8%	0	0.0%	3	2.1%	1	0.9%
Other	42	5.3%	41	5.1%	40	4.9%	15	11.5%	9	6.4%	7	6.3%
Data Not Available	27	3.4%	42	5.2%	51	6.2%	4	3.1%	6	4.3%	6	5.4%
TOTAL NEW COMMITMENTS	793	100%	810	100%	821	100%	131	100%	140	100%	112	100%

Sentence Type

	FY 2003-04		FY 2004-05		FY 2005-06		FY 2003-04		FY 2004-05		FY 2005-06	
	N	%	N	%	N	%	N	%	N	%	N	%
Non-Mandatory	576	72.6%	583	72.0%	585	71.3%	112	85.5%	118	84.3%	97	86.6%
Mandatory	147	18.5%	128	15.8%	143	17.4%	12	9.2%	16	11.4%	11	9.8%
Repeat	53	6.7%	72	8.9%	68	8.3%	6	4.6%	4	2.9%	3	2.7%
Violent	5	0.6%	5	0.6%	9	1.1%	0	0.0%	1	0.7%	0	0.0%
Aggravated Juvenile	2	0.3%	14	1.7%	10	1.2%	0	0.0%	0	0.0%	1	0.9%
Data Not Available	10	1.3%	8	1.0%	6	0.7%	1	0.8%	1	0.7%	0	0.0%

FY 2005-06 Offense Type¹

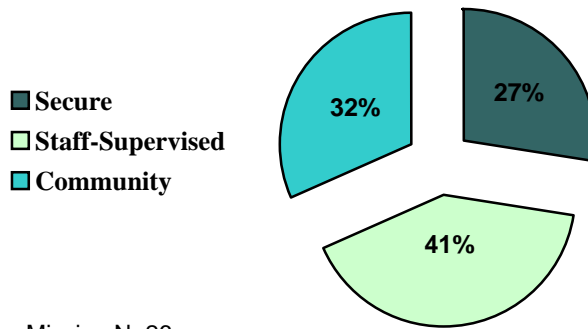


¹Felony and Misdemeanor counts are combined

COMMITTED YOUTH
COMMITMENT CLASSIFICATION

COMMITMENT CLASSIFICATION	FY 2003-04		FY 2004-05		FY 2005-06	
	N	%	N	%	N	%
Secure	211	22.8%	226	23.8%	249	26.7%
Staff-Supervised	425	46.0%	364	38.3%	370	39.7%
Community	286	31.0%	335	35.3%	288	30.9%
Data Not Available	2	0.2%	25	2.6%	26	2.8%
Total	924	100%	950	100%	933	100%

FY 2005-06 Commitment Classification



Offense Severity Score

Serious Person: 8+	16	17	18	19	20
Major Property, Lesser Person: 3 - 7	11	12	13	14	15
Minor Property: 1 - 2	6	7	8	9	10
Other Less Serious: 0	1	2	3	4	5
	1-3	4-7	8-10	11-12	13-14

Recidivism Risk Score

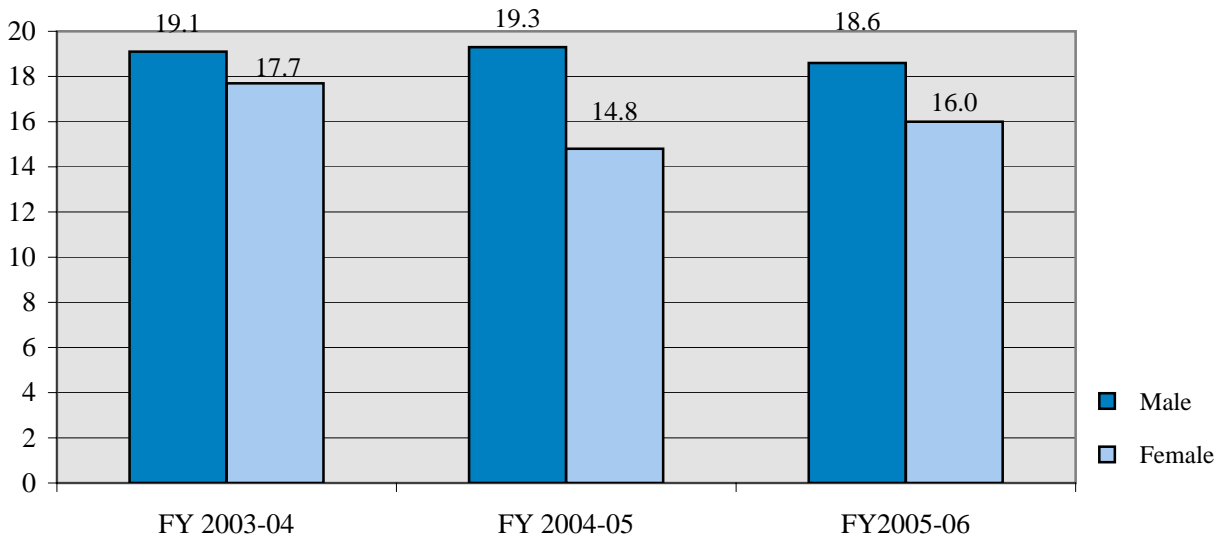


COMMITTED YOUTH
LENGTH OF STAY TRENDS

Residential LOS

	FY 2003-04	FY 2004-05	FY 2005-06
GENDER			
Male	19.1	19.3	18.6
Female	17.7	14.8	16.0
TOTAL RESIDENTIAL LOS	18.9	18.8	18.2
ETHNICITY			
Anglo-American	18.5	18.5	17.7
African-American	20.0	19.7	19.1
Hispanic/Latino	19.2	18.9	18.4
Native American	19.1	19.6	17.5
Asian-American	16.6	16.3	19.7
Other	17.8	3.7	14.0
AGE¹			
11 Years	N/A	9.2	0.5
12 Years	26.6	28.5	24.3
13 Years	27.1	30.6	20.6
14 Years	24.2	23.7	19.7
15 Years	21.4	20.6	20.7
16 Years	18.1	17.9	19.1
17 Years	16.2	16.3	15.6
18 Years	15.2	16.2	15.2
19 Years	14.6	17.3	14.6
20 Years	3.1	N/A	N/A

Residential LOS



COMMITTED YOUTH PAROLE TRENDS

	FY 2003-04			FY 2004-05			FY 2005-06		
	ADP	%	LOS ¹	ADP	%	LOS ¹	ADP	%	LOS ¹
DYC REGION									
Central	213.5	39.9%	8.4	206.5	42.1%	7.1	209.2	41.1%	6.2
Northeast	123.4	23.0%	8.1	113.7	23.2%	6.9	129.4	25.4%	6.4
Southern	123.4	23.0%	7.5	98.2	20.0%	7.1	100.1	19.7%	6.7
Western	72.9	13.6%	7.6	72.0	14.7%	7.4	70.0	13.8%	6.9
Data Not Available	2.4	0.5%	6.6	0.0	0.0%	N/A	0.0	0.0%	N/A
TOTAL	535.6	100%	8.0	490.3	100%	7.1	508.7	100%	6.4
GENDER									
Male	473.4	88.4%	8.0	433.7	88.5%	7.3	438.1	86.1%	6.6
Female	62.2	11.6%	8.1	56.6	11.5%	5.9	70.7	13.9%	5.7
ETHNICITY									
Anglo American	260.1	48.6%	7.9	230.4	47.0%	7.3	240.6	47.3%	6.5
African-American	75.9	14.2%	8.2	80.8	16.5%	7.2	79.3	15.6%	6.2
Hispanic/Latino	177.2	33.1%	8.2	166.5	34.0%	7.0	170.8	33.6%	6.6
Native American	0.0	0.0%	7.7	6.7	1.4%	6.6	10.4	2.0%	5.1
Asian-American	5.6	1.0%	7.7	5.2	1.1%	6.0	3.2	0.6%	7.5
Other	16.9	3.1%	7.6	0.6	0.1%	N/A	4.3	0.8%	6.0
AGE²									
12 Years	0.0	0.0%	N/A	0.0	0.0%	6.1	0.0	0.0%	N/A
13 Years	1.7	0.3%	6.0	0.6	0.1%	12.0	0.0	0.0%	8.4
14 Years	6.9	1.3%	8.0	1.3	0.3%	9.2	2.7	0.5%	7.1
15 Years	39.2	7.3%	10.1	8.8	1.8%	10.0	13.5	2.6%	6.7
16 Years	96.4	18.0%	9.4	33.2	6.8%	9.3	42.8	8.4%	7.1
17 Years	146.4	27.3%	8.3	83.2	17.0%	6.8	90.9	17.9%	7.2
18 Years	157.8	29.5%	7.6	144.5	29.5%	6.7	155.1	30.5%	6.4
19 Years and older	87.2	16.3%	7.5	218.6	44.6%	6.2	203.8	40.1%	6.3

¹Parole LOS expressed in months.

²LOS for each age category corresponds to age at the time of parole. ADP figures are based on the youth's age on the last day of the fiscal year.

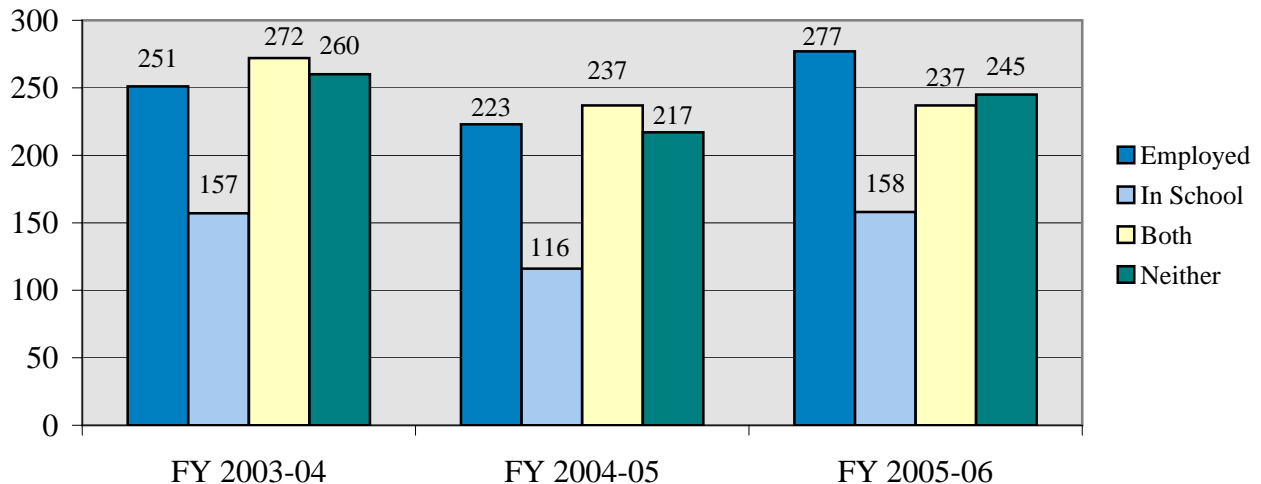
COMMITTED YOUTH DISCHARGE TRENDS

	FY 2003-04		FY 2004-05		FY 2005-06	
	N	%	N	%	N	%
DISCHARGED YOUTH						
DISCHARGE PLACEMENT						
Adult Jail/ Corrections	110	11.0%	96	11.6%	120	12.9%
Home	815	81.3%	685	82.4%	765	82.3%
Group Living	23	2.3%	9	1.1%	9	1.0%
Other Placement	48	4.8%	39	4.7%	31	3.3%
Escape	7	0.7%	2	0.2%	3	0.3%
Data Not Available	0	0.0%	0	0.0%	1	0.1%
TOTAL	1,003	100%	831	100%	929	100%

JOB/ SCHOOL STATUS AT DISCHARGE						
Employed Only	251	25.0%	223	26.8%	277	29.8%
Enrolled in School Only	157	15.7%	116	14.0%	158	17.0%
Employed and Enrolled in School	272	27.1%	237	28.5%	237	25.5%
Unemployed and Unenrolled	260	25.9%	217	26.1%	245	26.4%
Data Not Available	63	6.3%	38	4.6%	12	1.3%

PAROLE ADJUSTMENT AT DISCHARGE						
Satisfactory to Excellent	612	61.0%	514	61.9%	610	65.7%
Poor to Unsatisfactory	322	32.1%	252	30.3%	262	28.2%
Not on Parole at Time of Discharge	46	4.6%	38	4.6%	46	5.0%
Data Not Available	23	2.3%	27	3.2%	11	1.2%

Job / School Status at Parole Discharge



COMMITTED YOUTH DEMOGRAPHIC TRENDS
FY 2005-06 DATA BY REGION

	CENTRAL			NORTHEAST			SOUTHERN			WESTERN		
	New ¹	ADP	LOS ²	New ¹	ADP	LOS ²	New ¹	ADP	LOS ²	New ¹	ADP	LOS ²
GENDER												
Male	375	580.5	18.8	219	315.4	18.6	153	245.2	19.1	74	127.4	16.4
Female	35	72.1	16.0	41	48.2	14.7	20	45.7	20.9	16	18.9	10.9
TOTAL	410	652.7	18.5	260	363.6	18.1	173	290.9	19.4	90	146.3	15.3
ETHNICITY												
Anglo-American	136	216.6	18.3	117	176.5	17.6	75	140.7	19.4	46	98.5	14.7
African-American	109	186.7	18.8	16	18.2	17.8	37	54.0	21.3	5	3.5	6.5
Hispanic/Latino	156	233.9	18.4	119	156.5	18.9	58	90.8	17.7	28	33.1	18.3
Native American	6	7.9	19.1	6	6.2	14.9	2	3.4	36.1	8	8.4	13.2
Asian-American	2	2.9	17.3	1	3.3	26.9	0	1.1	20.8	0	0.0	N/A
Other	1	4.7	19.0	1	2.9	13.3	1	0.9	2.2	3	2.7	17.0
AGE³												
11 Years	0	0.0	N/A	0	0.0	N/A	0	0.0	N/A	1	0.0	0.5
12 Years	0	0.0	N/A	3	0.0	N/A	0	0.0	N/A	3	0.3	24.3
13 Years	11	1.2	19.5	5	1.7	15.3	6	1.8	24.3	2	0.3	26.0
14 Years	34	17.7	18.3	26	12.6	18.9	22	7.6	23.3	10	7.3	17.8
15 Years	81	48.6	22.2	38	28.7	20.8	39	22.5	20.5	21	10.4	15.8
16 Years	102	96.5	18.9	74	51.9	20.6	43	44.6	19.5	21	20.9	15.7
17 Years	156	169.6	16.6	94	96.8	15.1	59	72.6	16.3	32	37.3	12.8
18 Years	20	196.5	14.5	18	110.8	15.4	4	87.1	20.5	0	45.0	14.1
19 Years and Older	6	122.6	15.5	2	61.1	11.9	0	54.7	22.4	0	24.8	8.1
Average Age at Commitment:	16.6 Years			16.6 Years			16.4 Years			16.2 Years		
SENTENCE TYPE												
Non-Mandatory	313	481.5	18.3	165	206.9	15.9	146	247.2	19.0	58	104.9	14.1
Mandatory	64	121.0	19.3	66	97.0	19.1	11	25.8	20.6	13	17.4	18.2
Repeat	26	37.2	16.1	16	34.2	17.4	12	10.7	21.4	17	17.9	21.1
Violent	6	7.6	15.7	3	3.1	23.5	0	0.2	22.8	0	2.0	N/A
Aggravated Juvenile	1	5.0	38.2	5	20.0	42.0	4	5.7	20.7	1	3.4	10.3
Data Not Available	0	0.4	22.2	5	2.4	N/A	0	1.3	N/A	1	0.8	14.2

¹Indicates new commitments.

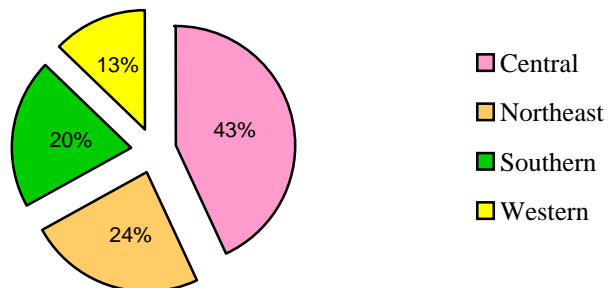
²Residential LOS expressed in months.

³Actual counts and LOS for each age category correspond to age at commitment. ADP figures for each age category are based on the youth's age on the last day of the fiscal year.

COMMITTED YOUTH DEMOGRAPHIC TRENDS
FY 2005-06 DATA BY REGION

	CENTRAL		NORTHEAST		SOUTHERN		WESTERN	
	N	%	N	%	N	%	N	%
DISCHARGED YOUTH								
DISCHARGE PLACEMENT								
Adult Jail/ Corrections	68	17.0%	19	8.6%	21	11.1%	12	10.2%
Home ¹	308	77.0%	198	89.2%	164	86.8%	95	80.5%
Group Living	3	0.8%	0	0.0%	1	0.5%	5	4.2%
Other Placement	18	4.5%	4	1.8%	3	1.6%	6	5.1%
Escape	3	0.8%	0	0.0%	0	0.0%	0	0.0%
Data Not Available	0	0.0%	1	0.5%	0	0.0%	0	0.0%
TOTAL	400	100%	222	100%	189	100%	118	100%
JOB/ SCHOOL STATUS								
Employed Only	132	33.0%	85	38.3%	49	25.9%	11	9.3%
Enrolled in School Only	82	20.5%	23	10.4%	26	13.8%	27	22.9%
Employed and Enrolled in School	75	18.8%	48	21.6%	49	25.9%	65	55.1%
Unemployed and Unenrolled	109	27.3%	63	28.4%	58	30.7%	15	12.7%
Data Not Available	2	0.5%	3	1.4%	7	3.7%	0	0.0%
PAROLE ADJUSTMENT								
Satisfactory to Excellent	262	65.5%	131	59.0%	125	66.1%	92	78.0%
Poor to Unsatisfactory	115	28.8%	79	35.6%	52	27.5%	16	13.6%
Not on Parole at Time of Discharge	16	4.0%	12	5.4%	9	4.8%	9	7.6%
Data Not Available	7	1.8%	0	0.0%	3	1.6%	1	0.8%
PROGRAM TYPE								
	LOS (Months)²							
Secure	7.8		7.6		7.9		7.5	
Staff Supervised	8.3		7.9		8.8		5.7	
Community Residential	2.2		2.6		2.4		1.7	
Total Residential	18.5		18.1		19.4		15.3	
Parole	6.2		6.4		6.7		6.9	
Total Commitment	25.3		25.0		26.3		22.2	

FY 2005-06 Percent of Discharged Youth by Region



¹The 'Home' category includes parent(s), guardian, adoptive family, foster family, relative, spouse, friend, independent living.

²LOS expressed in months.

Glossary of Terms Used

Disclaimer: *These definitions are provided for quick reference purposes only. Please refer to the Colorado Revised Statutes for more complete definitions of legal categories and conditions.*

Adjudication – The result of an adjudicatory hearing in which the court determines that it has been proven beyond a reasonable doubt that a juvenile has committed a delinquent act, or that a juvenile has pled guilty to committing a delinquent act.

Aggravated Offender (Sentence Type) – see *Sentencing Special Offenders*.

Assessment - Youth committed to DYC are assessed to determine a youth's classification level and needs for appropriate placement and program referral.

Average Daily Population (ADP) - The average number of youth present in a facility or program during the reporting period.

Colorado Client Assessment Record (CCAR) - An assessment tool used to evaluate mental health treatment needs.

Community Accountability Program – Youth could be sentenced to the Community Accountability Program (CAP) as a condition of probation, after the cessation of the Regimented Juvenile Training Program. The sentence included a 60-day residential program, focusing on restorative justice and youth skill development. The residential phase was followed by an intensive aftercare program for 120 days, or until the period of probation expires. The aftercare phase, also based on a restorative justice model, focused on continued service delivery to youth and families as well as reintegration into the community. Funding for CAP was eliminated in the FY 2002-03 Supplemental Reduction.

Clients Served: Commitment - The total number of youth served in a particular program during the reporting period. Total clients served in a given category (e.g. secure or staff-supervised) represent unduplicated counts of clients served in those categories. Since youth can be served in more than one type of program in the course of a year, the total clients served in a particular category will not equal the sum of the clients served in each program.

Clients Served: Detention - The total number of youth served in a particular program during the reporting period. Total clients served in a facility or program (e.g. Adams YSC) represents unduplicated counts of clients served in those facilities. Since the same youth can have multiple admissions to detention and be served in more than one particular facility in the course of a year, the total clients served in all facilities will not equal the sum of the clients served in each facility.

Commitment - Commitments are dispositions of juvenile cases resulting in the transfer of legal custody to the Department of Human Services by the court as a result of an adjudicatory hearing on charges of delinquent acts committed by the youth.

Commitment Classification - An objective commitment classification instrument is administered during assessment to guide the placement decisions concerning the type of commitment program most suitable for individual youth given the severity of their commitment offense coupled with the risk of re-offending.

Commitment Length of Stay (LOS) – see ***Total Commitment LOS***.

Commitment Sentences - Juveniles who have been adjudicated delinquent and committed to the Division of Youth Corrections can be given either non-mandatory or mandatory sentences. Mandatory sentences require that a youth spend a specified minimum amount of time in out-of-home placement and can include repeat and violent offenders. Juveniles can also be sentenced as aggravated offenders (Section 19-2-601, C.R.S.).

Community Residential Placement – DYC contracts with a number of private vendors to provide community-based programs to youth presenting the lowest risk of re-offending and youth transitioning from more secure programs. These programs include both group residential care and foster care programs.

Detention - The custodial status of youth who are being confined or supervised after arrest or while awaiting the completion of judicial proceedings. Detention youth are served in secure, state-operated or staff-secure, privately-operated facilities or in non-residential, community-based supervision programs.

Detention Admission - Each admission to detention for temporary custody of youth is tracked under the admission category. In contrast to unduplicated counts of clients served in detention, one youth can have multiple admissions for a single incident. For example, if a youth is admitted to detention on a pretrial basis (preadjudicated) and released, a later sentencing to detention on the original charge would count as a separate admission, even though it is the same youth and the same incident. Likewise, if the youth serves the sentence on weekends, each weekend admission counts as a separate admission.

Detention Sentence - The court imposed sanction of confinement to a detention facility or the Community Accountability Program as a disposition of a delinquency adjudication. Major sentence types include probation sentences, traffic sentences, handgun sentences, municipal sentences, game and fish sentences, contempt sentences, and non-probation sentences for a delinquent act.

Length of Stay (LOS): Commitment - There are several variations of the length of stay measure. All commitment LOS figures are measured in months and are calculated for those youth who spent time in the program for which LOS is reported (e.g., secure) prior to discharge from DYC custody (including either residential or nonresidential parole supervision).

Length of Stay (LOS): Detention - The amount of time spent in a detention facility or program during the time period. All detention LOS figures are measured in days.

Mandatory Sentence Offender- See ***Sentencing Special Offenders***.

Municipal Sentence - Detention sentence imposed by a municipal court for violation of municipal ordinances.

New Commitment - Commitment of youth who were not previously committed, or who were previously committed but had been discharged from DYC rolls.

Non-Mandatory Sentences - These sanctions involve no minimum out-of-home sentence length. The maximum sentence length cannot exceed 24 months. The Juvenile Parole Board determines released from commitment to parole status.

Other Residential – Placement category including Job Corps, Group Homes, Hospitalization etc.

Parole - The status of an offender conditionally released from a residential setting by discretion of the Juvenile Parole Board prior to expiration of Commitment, or upon expiration of commitment. Colorado juvenile offenders have a mandatory minimum parole length of 6 months. While on parole a youth is placed under the supervision of a parole officer and is required to observe conditions of release set by the parole officer and the Juvenile Parole Board.

Parole Length of Stay (LOS) -The average amount of time spent on parole for youth discharged from DYC during the reporting period. Parole LOS is reported in months.

Parole Revocation - The administrative action of the Juvenile Parole Board, which removes a youth from parole status in response to a violation of lawfully required conditions of parole, including the prohibition against commission of a new offense. Further parole hearings are scheduled at the discretion of the youth's client manager.

Parole Suspension - The administrative action of the Juvenile Parole Board, which removes a youth from parole status in response to a violation of lawfully required conditions of parole, including the prohibition against commission of a new offense. Reconsideration of parole must occur within 90 days on a date determined by the Juvenile Parole Board.

Parole Violation – Actions by a parolee that do not conform to the conditions of parole.

Preadjudicated - The legal status of youth pending delinquency adjudication decisions. Often these youth are referred to as pre-trial youth since they are generally admitted to detention pending some court action. This category also includes youth who are serving a sentence, such as probation, on a prior delinquency adjudication and who are in detention pending a new court action.

Prior Adjudications - Adjudications that occurred prior to the current detention or commitment event.

Prior Out-of-home Placements - Placements in Social Services or DYC residential programs or other treatment programs prior to the current commitment sentence.

Recommitment - An additional commitment sentence imposed by the court on a youth who has not yet been discharged from DYC.

Repeat Offender - see *Sentencing Special Offenders*.

Regional Management Structure - Decentralized DYC management structure comprised of four geographic regions in the state.

Residential Programs - Programs that provide 24-hour care.

Residential Length of Stay (LOS) - The average amount of time spent in all residential programs (assessment, secure, staff secure, and community programs) for youth discharged from DYC during the reporting period.

Secure Residential Facility – A facility with physical security features such as locked doors, sally-ports, and correctional fencing.

Sentencing Special Offenders (see Section 19-2-908, C.R.S.)

- a. **Mandatory Sentence Offender** – These sanctions specify a minimum time period of up to 24 months or less during which a youth must be in an out-of-home placement.
- b. **Repeat Offender (Sentence Type)** - A 'repeat' sentence type can be imposed on a juvenile who has been previously adjudicated a juvenile delinquent, and is adjudicated a juvenile delinquent for a delinquent act that constitutes a felony, or if his or her probation is revoked for a delinquent act that constitutes a felony. The court may or may not designate a minimum sentence length.
- c. **Violent Offender (Sentence Type)** - A juvenile may be sentenced as a violent offender if he or she is adjudicated a juvenile delinquent for a delinquent act that constitutes a crime of violence as defined in Section 16-11-309(2), Colorado Revised Statutes.
- d. **Aggravated Offender (Sentence Type)** – These sanctions specify a time period of three to seven years, during which time a youth must remain in the custody of the Department of Human Services. Contingent upon court approval, youth may be eligible for non-secure placement, parole, or transfer to the Department of Corrections (adult corrections).

Staff-Supervised Residential Facility – Privately operated, staff-supervised facilities provide 24-hour line of sight supervision of youth.

State Owned / Privately Operated Programs - Detention or commitment programs which are administered by contract service providers in DYC owned facilities.

State Owned / State Operated Programs - Detention or commitment programs which are administered by DYC employees in DYC owned facilities.

Total Commitment Length of Stay (LOS) - The average amount of time in DYC custody (sentence start date to discharge date including parole) for all youth discharged from DYC during the reporting period, not including escape time.

Violent Offender (Sentence Type) – see *Sentencing Special Offenders*.