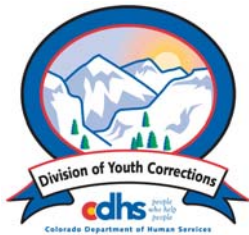


Fiscal Year 2004-2005

Management Reference Manual



Colorado Department of Human Services
Division of Youth Corrections

Working with Colorado Communities to Achieve Justice

January 2006

This manual provides the information most often requested on DYC client populations. Any questions concerning the data presented in this manual may be directed to the Research and Evaluation Unit, Division of Youth Corrections, 4255 S. Knox Court, Denver, CO 80236, or jonathan.sushinsky@state.co.us

**Colorado Department of Human Services
Division of Youth Corrections**



January, 2006

<http://www.cdhs.state.co.us/dyc>

STATE OF COLORADO



Colorado Department of Human Services

people who help people

DIVISION OF YOUTH CORRECTIONS
John Gomez, Director

4255 South Knox Court
Denver, Colorado 80236
Phone 303-866-7345
FAX 303-866-7344
www.cdhs.state.co.us



Bill Owens
Governor

Marva Livingston Hammons
Executive Director

TO THE READER

The Division of Youth Corrections (DYC) is pleased to release the FY 2004-05 Management Reference Manual.

This Management Reference Manual contains population information for Fiscal Year 2004-05. As in previous years, the Division continues to experience changes, including continued population growth in commitment residential programs, while detention and parole populations have been reduced, in part because of recent Legislative changes to the juvenile justice system in Colorado.

Legislative mandates have set an upper limit to “cap” the detention population at 479, and have shortened the mandatory parole length to 6 months. The average detention and parole populations have declined since these policies were implemented in FY 2003-04. The committed residential population has continued to grow at an average rate of 5% over the last three fiscal years. The growth rate of the committed female population continues to increase, as does the growth rate of the population needing specialized treatment including, mental health, substance abuse, and offense-specific treatment.

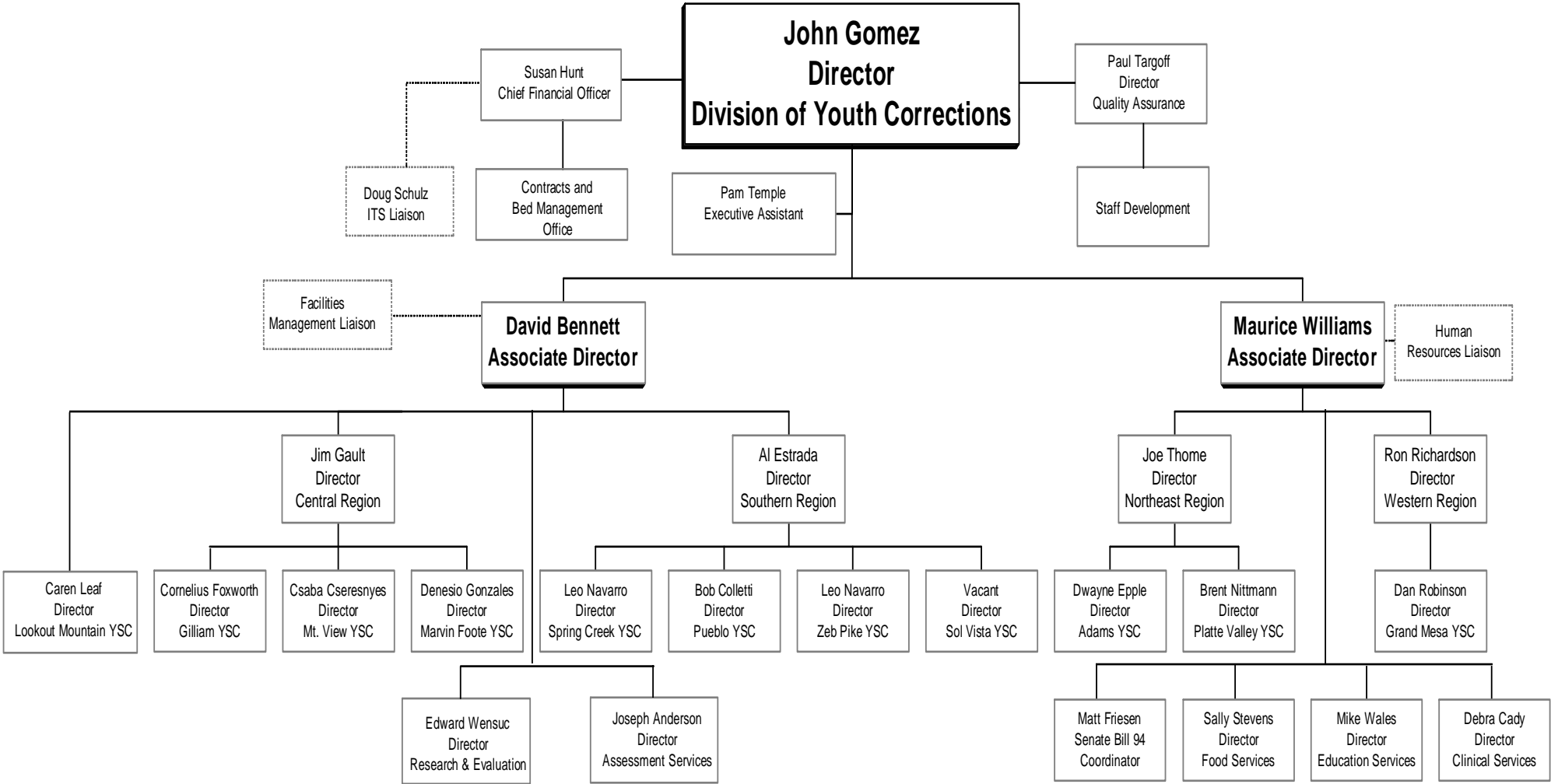
Thank you for your interest in the Division of Youth Corrections. Additional information is available on the Division’s web site at <http://www.cdhs.state.co.us/dyc>.

Sincerely,

A handwritten signature in black ink that reads 'John Gomez'.

John Gomez
Director, Division of Youth Corrections

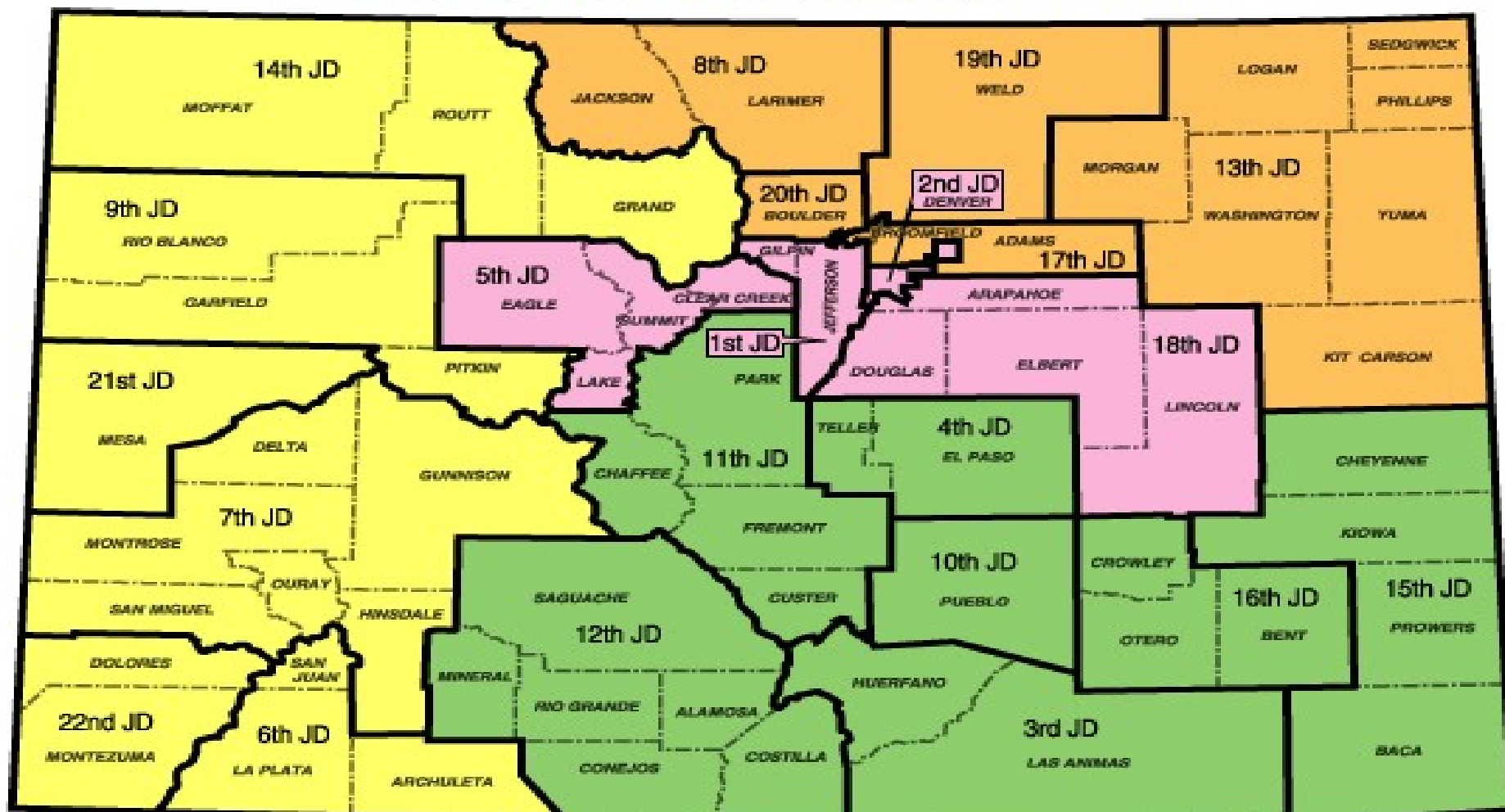
Division of Youth Corrections Organizational Flowchart



Division of Youth Corrections

Catchment Areas/DYC Regional Management Structure

Central Region, Northeast Region, Southern Region, and Western Region



Management Reference Manual

Fiscal Year 2004-2005

Executive Summary	i
Section I: Colorado State Totals	
Filtering Process to Detention	1
Filtering Process to Commitment	2
All Clients Population Data	3
Section II: Detention Program Services	
Detained Youth Population Trends	4
Detained Youth Population by Program	6
Detained Youth Population Trends ADP by Program	7
Detained Youth Demographic Trends	8
Detained Youth Demographic Trends by Gender	10
Section III: Commitment Program Services	
Committed Youth Population Trends	11
Committed Youth Population by Program	13
Committed Youth Population Trends ADP	15
Committed Youth Demographic Trends	16
Committed Youth Demographic Trends by Gender	17
New Commitment Trends by Gender	18
Committed Youth Commitment Classification	20
Committed Youth Length of Stay Trends	21
Committed Youth Parole Trends	22
Committed Youth Discharge Trends	23
Section IV: Regional Summaries	
Committed Youth Demographic Trends	24
Committed Youth Discharge Trends	25
Glossary of Terms	Appendix

Fiscal Year 2004-05 Executive Summary

The Management Reference Manual is designed to provide population information on youth served by the Division of Youth Corrections (DYC) during FY 2004-05 and other trend data. Section I contains statewide population information, while Sections II and III provide more detailed population data that describes the detention and commitment populations respectively. Section IV contains the Division's Parole data. A report summary is included below.

The FY 2004-05 detention population reflects the impact of the prior year's detention cap legislation. Governor Bill Owens signed Senate Bill 03-286 into law on May 1, 2003. This legislation established a 'cap' or limit of 479 on the number of State funded detention beds. This legislation was implemented October 1, 2003. The FY 2000-01 detention average daily population (ADP) was 583.0, but since implementation, under current state law, the detention ADP can never exceed 479. Since ADP is an average measure, and the *maximum* possible value is 479, it is likely that the ADP will remain below the legislatively mandated cap. Each of the State's 22 judicial districts has been allocated a portion of the 479 beds. Statutory language provides that districts may borrow beds within an established 'catchment' area. Statutes also mandate that districts have procedures in place for emergency release of detained youth in the event that a district is unable to borrow a bed. FY 2004-05 was the first full year of operation under the new cap. Last year's detention year ADP marked a ten year low, however detention LOS, and ADP did increase slightly during FY 2004-05. The detention LOS increased from 12.8 to 13.1 days, and the ADP increased 2% to 402.0.

New commitments increased 3% to 950 during FY 2004-05. The new commitment rate rose slightly to 18.3 committed youth per 10,000 Colorado youth, from 17.7 committed youth per 10,000 Colorado youth in FY 2003-04. The average daily population also increased 68 youth from 1,385.8 youth in FY 2003-04 to 1,453.5 youth in FY 2004-05. The population of youth in community placements increased by 2% as the population of youth in secure placements correspondingly decreased.

Fiscal Year 2004-05 was also the first full year following the implementation of Senate Bill 03-284, which shortened the mandatory parole length from nine to six months, effective May 1, 2003. There was a period of time during FY 2003-04 when youth who had been sentenced under the old 9-month mandate were being released at the same time as youth who were being released from the new six-month parole sentence. This precipitous increase in parole discharges resulted in a statewide decline in parole ADP, and a very large number of discharges. During FY 2003-04 1,003 youth were discharged. This year, discharges declined 17% to 831 youth.

I. STATE TOTALS FY 2004-05

A. Juvenile Justice Filtering Process to Detention

- There were 10,970 new admissions to DYC Detention during FY 2004-05. This represents 2.1% of the 10-17 year old Colorado population, and it represents 22.8% of Colorado's juvenile arrests.
- Admissions are at a 10-year low. Detention Admissions dropped 2% since FY 2003-04. This is a very slight decline in comparison to the 14% and 21% drops of the past few fiscal years.

B. Juvenile Justice Filtering Process to Commitment

- There were 950 new commitments to DYC during FY 2004-05. This represents 0.2% of the 10-17 year old Colorado population, and it represents 6.3% of Colorado's 15,156 juvenile filings.
- This commitment rate has remained fairly constant for the past 5 fiscal years, as the State's youth population and the number of new commitments have experienced similar levels of growth.

C. Clients Served¹

- There were 8,891 youth served in DYC programs during FY 2004-05, which reflects an unduplicated count of individual youth. 7,252 youth were served in detention programs, 2,404 youth were served in residential commitment programs, and 1,596 youth were served in parole services.

D. DYC Population Summary

- There was an ADP of 402.0 detained youth, which marks the first year of growth after 5 years of decline.
- There was an ADP of 1,453.5 as the juvenile committed population in Colorado continues to grow.
- Commitment ADP has increased steadily over the past 10 years.
- There was an ADP of 490.3 paroled youth.
- There were 10,970 new admissions to detention, which is a 10-year low, although there was only a 2% decrease in admissions during FY 2004-05 as compared to a 21% decrease during FY 2003-04 .
- There were 950 new commitments.

¹ Clients Served is an unduplicated count. Categorical totals are not a sum of individual program counts and are not available for all categories.

II. DETENTION POPULATION Trends and Characteristics

A. Population Trends

- As a result of the provisions of SB 03-286, detention ADP is still much lower than it had been before the capping legislation. Detention ADP is 32% lower than it was five years ago, although at 402.0 it is up 2% since last fiscal year.
- Detention Admissions are at a 10-year low, and at 10,970 are 28% lower than they were five years ago in FY 1999-00.
- Ninety-four percent of detained youth were held in State-Operated facilities; essentially the same percent as FY 2003-04. Privately operated placements were reduced last year in response to the detention cap legislation.
- The detention Length of Stay (LOS), 13.1 days, is slightly longer than it was last fiscal year, but is still eight percent below what it was five years ago. A decrease in LOS was anticipated because of the detention cap.

B. Population Characteristics

1. Gender

- The percent of male and female admissions remained relatively unchanged at 76% and 24% respectively.
- The percent of female ADP is at 19% as it was last fiscal year.

2. Ethnicity

- Anglo-American youth (44%) have consistently represented the largest ethnic group in DYC detention facilities, followed by Hispanic / Latino youth (37%), and African-American youth (16%).

3. Age

- The average age at admission in FY 2004-05 was 16 yrs, as it was in FY 2003-04 and for several years prior.
- The age distribution for FY 2004-05 is very similar to that of FY 2003-04. 17 year olds represented the largest age group (28%), followed by 16 year olds (27%) and 15 year olds (23%).

4. Prior Admissions

- Sixty-three percent of the youth admitted to detention in FY 2004-05 had one or more prior detention admissions. This is the same percentage as last fiscal year.

III. RESIDENTIAL COMMITMENT POPULATION Trends and Characteristics

A. Population Trends

- The commitment population experienced growth across three commitment categories. ADP experienced the greatest rate of increase, growing by 5% since last fiscal year; Clients served increased by almost 5%; and new commitments increased by 3%.
- Residential commitment length of stay (LOS) experienced a decline, dropping 0.5% to 18.8 months, although it is still 21% greater than it was five years ago in FY 1999-00.

B. Population Characteristics²

1. Gender

- The percentage of male and female new commitments is similar to last year. There was only a 0.5% increase in female new commitments in FY 2004-05.
- Female ADP has grown 14% since FY 2003-04, while the male population has grown by only 4%.
- Female new commitments have increased 7% since FY 2003-04, while male new commitments have increased by only 2%.

2. Ethnicity

- The majority of new commitments have historically been Anglo, Hispanic/Latino and African American youth respectively, and this holds true for FY 2004-05. This year's ethnic distribution was 44% Anglo, 36% Hispanic and 17% African American.

3. Age

- The average age at commitment was 16.5 years for the second year. This figure had remained stable at 16.4 from FY 1998-99 to FY 2000-01.
- Thirty-four percent of youth were 17 years old, 27% were 16 years old, and 19% were 15 years old. These proportions have not changed significantly in several years. The percent of youth committed at age 13 has almost doubled, from 17 youth in FY 2003-04 to 30 youth in FY 2004-05. These youth account for 3% of total new commitments.

² Refers to youth who were newly committed during FY 2004-05, unless otherwise specified.

4. Other Characteristics

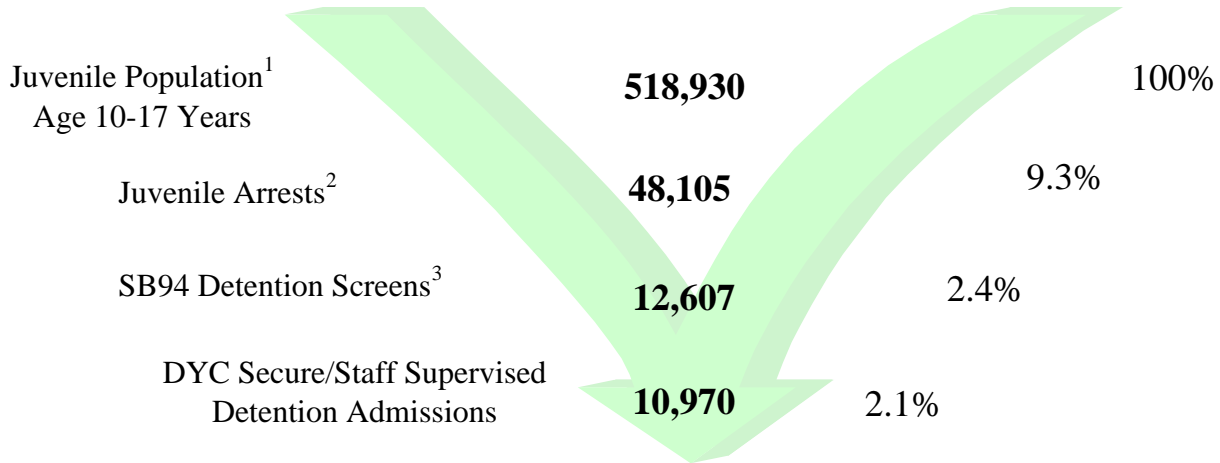
- Twenty-six percent of newly committed youth received mandatory sentences. Repeat offenders have increased to 8% from 6% in FY 2003-04.
- The average age at first adjudication was 13.9 years, 0.2 years younger than it was during FY 1998-99 through FY 2003-04.
- Sixty-Nine percent of youth had one or more out-of-home placements. This is a 3% decrease from FY 2003-004.
- The percent of males and females with one prior out-of-home placement was similar, but 34% of males had no prior out-of-home placements, while only 17% of females had no prior out-of-home placements.
- The percent of females with a history of running away had increased slightly from 82% in FY 2000-01 to 86% in FY 2003-04, but dropped back to 81% in FY 2004-05. The percent of males with a runaway history had also increased, growing from 58% in FY 2000-01 to 65% in FY 2003-04 , but likewise dropped back down to 59% during FY 2004-05 .
- The percent of newly committed youth in need of treatment level substance abuse services has been growing every year, and the FY 2003-04 to FY 2004-05 increase in the female population is quite large. The female population in need of treatment has increased from 58% to 69%, and the male treatment population has increased from 53% to 58%.
- Seventy percent of newly committed youth had one or more prior adjudications. This is slightly lower than 73% in FY 2003-04.
- Sixty percent of youth were committed for felony offenses in FY 2004-05. This is slightly lower than 62 % in FY 2003-04 and 64% in FY 2000-01.

IV. PAROLE POPULATION Trends and Characteristics

- Parole ADP experienced its 5th year of sharp decline, to hit a 5-year low of 490.3 youth.
- Parole LOS declined from 8.0 months in FY 2003-04 to 7.1 months in FY 2004-05. This decline was expected as we continue to see the effects of the legislature that reduced mandatory parole length of stay from nine to six months.
- Eighty-two percent of youth were discharged from parole into their homes (including foster homes, step parents, spouses, single parents, etc) during FY 2004-05. Twelve percent discharged directly into Adult Jail/ Corrections. This statistic has remained relatively stable over the past few years.

Fiscal Year 2004-05

Juvenile Justice Filtering Process to Detention



	FY2000-01	FY2001-02	FY2002-03	FY2003-04	FY2004-05
Age 10-17 population ¹	499,700	505,748	510,681	520,797	518,930
Juvenile Arrests ²	58,560	54,531	54,008	45,836	48,105
Arrests as % of population	11.7%	10.8%	10.6%	8.8%	9.3%
SB94 Detention Screens ³	13,590	N/A	12,105	12,692	12,607
Detention Admissions	14,921	16,310	14,059	11,148	10,970
Admissions as % of Population	3.0%	3.2%	2.8%	2.1%	2.1%

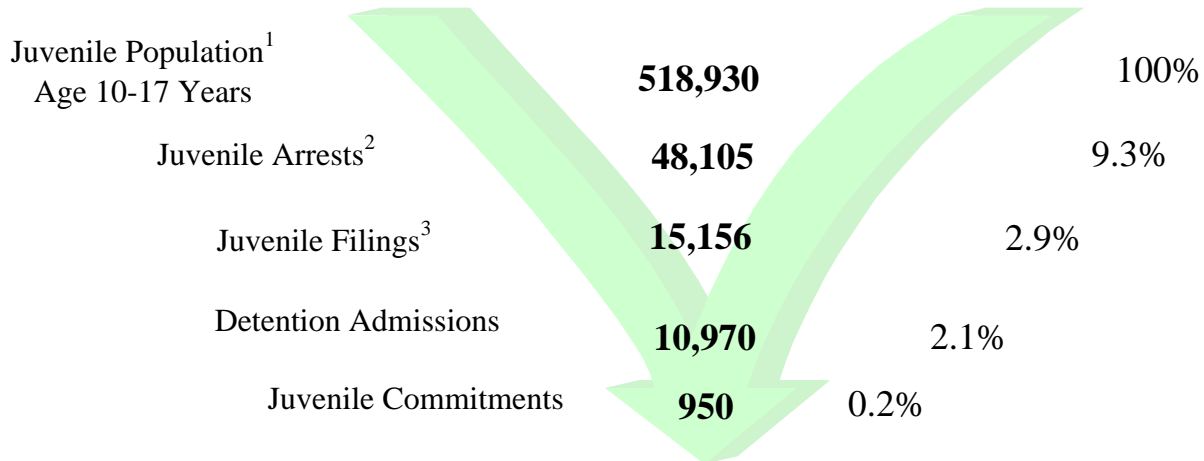
¹Colorado State Department of Local Affairs. Population data are reported for calendar years. Population estimates are based upon the 2000 census (<http://dola.colorado.gov/demog/demog.cfm>).

²Colorado Bureau of Investigations, *Crime in Colorado 2004*.

³Due to the TRAILS conversion process, screening data is not available for FY 2001-02.

Fiscal Year 2004-05

Juvenile Justice Filtering Process to Commitment



	FY2000-01	FY2001-02	FY2002-03	FY2003-04	FY2004-05
Age 10-17 Population ¹	499,700	505,748	510,681	520,797	518,930
Juvenile Arrests ²	58,560	54,531	54,008	45,836	48,105
Arrests as % of population	11.7%	10.8%	10.6%	8.8%	9.3%
Juvenile Delinquency Filings ³	16,986	17,675	17,179	15,981	15,156
Juvenile Detention Admissions	14,921	16,310	14,059	11,148	10,970
Number of Commitments	766	843	824	924	950
Commitments as % of Population	0.2%	0.2%	0.2%	0.2%	0.2%

¹Colorado State Department of Local Affairs. Population data are reported for calendar years. Population estimates are based upon the 2000 census (<http://dola.colorado.gov/demog/demog.cfm>).

²Colorado Bureau of Investigations, *Crime in Colorado 2004*.

³Colorado Judicial Branch FY2004-05 estimates.

ALL CLIENTS POPULATION DATA

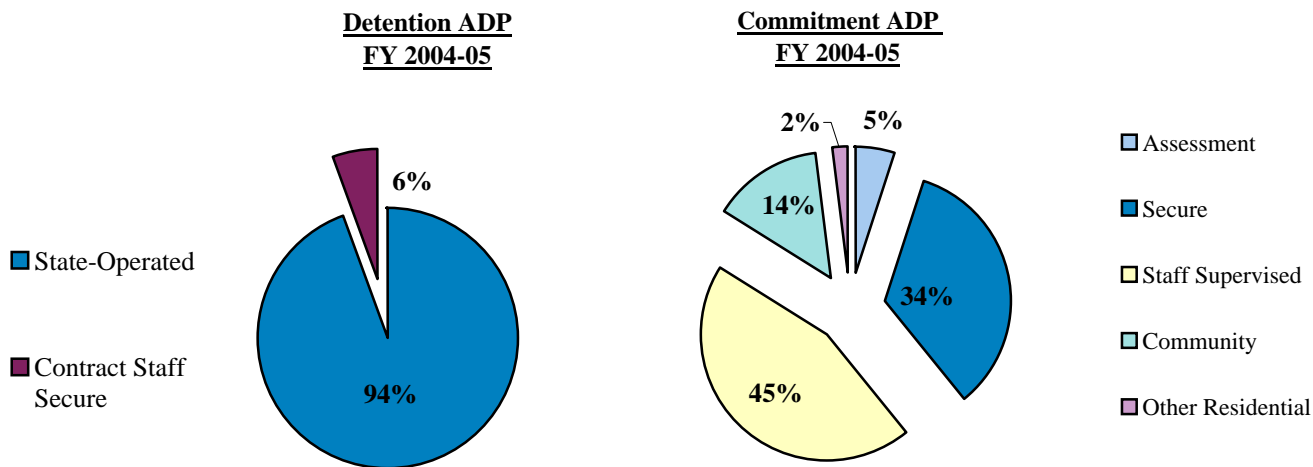
Fiscal Year 2004-05

DETAINED YOUTH	Clients Served¹	New Admits	ADP	LOS
State-Operated	7,053	10,428	379.2	13.0 days
Contract Staff Secure	463	542	22.8	15.2 days
Total Detained	7,252	10,970	402.0	13.1 days

COMMITTED YOUTH	Clients Served¹	ADP	LOS
Assessment	1,036	72.0	0.8 months
Secure	1,613	498.7	9.0 months
Staff Supervised	1,271	650.2	7.0 months
Community	703	203.1	2.5 months
Other Residential ²	N/A	29.5	N/A
Total Committed Residential	2,404	1,453.5	18.8 Months

PAROLED YOUTH	Clients Served¹	New Admits	ADP	LOS
Total Paroled	1,596	889	490.3	7.1 months

STATEWIDE TOTAL	Clients Served¹	ADP	LOS
STATEWIDE TOTAL	8,891	2,345.8	26.0 months



¹Clients Served is an unduplicated count. Categorical totals are not a sum of individual program counts and are not available for all categories.

²Other Residential includes Group Homes, Job Corps, Hospitalizations etc.

NOTE: Throughout the Reference Manual, category sums may vary slightly from given totals due to rounding differences.

10 Year Detention Trends

Fiscal Year	Clients Served¹	Percentage Change +/-	New Admits	Percentage Change +/-	ADP²	Percentage Change +/-	LOS (Days)	Percentage Change +/-
1995-96	7,870	-10.6%	13,852	-16.7%	541.5	-8.1%	13.7	3.8%
1996-97	8,303	5.5%	14,652	5.8%	522.5	-3.5%	13.0	-5.1%
1997-98	8,785	5.8%	15,428	5.3%	591.8	13.3%	13.9	6.9%
1998-99	8,924	1.6%	15,212	-1.4%	602.4	1.8%	14.6	5.0%
1999-00	8,799	-1.4%	15,294	0.5%	589.1	-2.2%	14.3	-2.1%
2000-01	8,899	1.1%	14,921	-2.4%	583.0	-1.0%	14.5	1.4%
2001-02	8,916	0.2%	16,310	9.3%	545.0	-6.5%	15.7	8.3%
2002-03	8,242	-7.6%	14,059	-13.8%	497.1	-8.8%	15.3	-2.5%
2003-04	7,290	-11.6%	11,148	-20.7%	396.2	-20.3%	12.8	-16.3%
2004-05	7,252	-0.5%	10,970	-1.6%	402.0	1.5%	13.1	2.3%

Fiscal Year 2004-05 was the first full year of detention operation under the legislative, statewide cap of 479 youth. The detention population increased slightly from last year's 10 year low of 396.2 ADP to a fiscal year average of 402.0 youth. Ninety-four percent of detained youth were held in State-Operated facilities. Since the detention cap was implemented there has been a decreased reliance on Privately-Operated placements. Only 6% of this years' ADP was detained in a contracted secure or staff-secure facility. The average length of stay increased two percent to 13.1 days; corresponding to the increased ADP. The number of clients served followed a three-year trend of decline, however this year's decrease of less than one percent was markedly smaller than the eight and twelve percent decreases of the past two fiscal years. Similarly, the number of new detention admissions declined by only two percent, after fourteen and twenty-one percent declines in previous years.

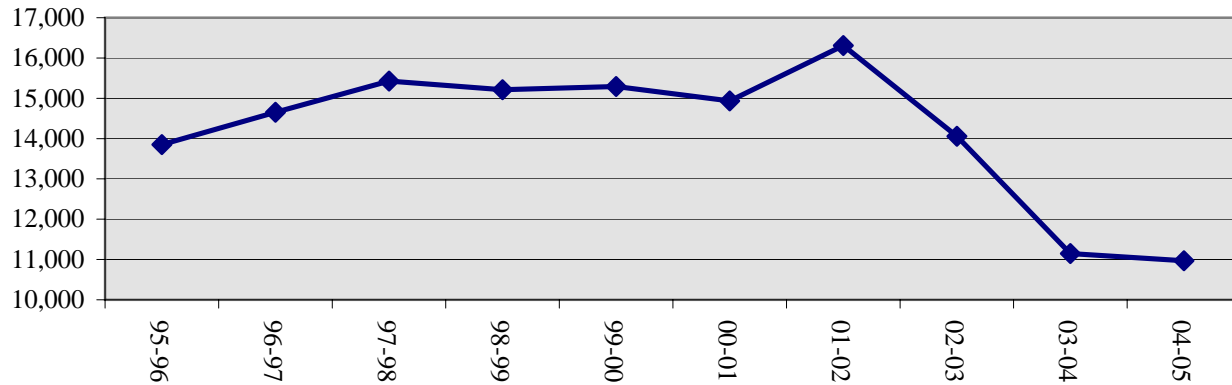
¹Clients served counts are unduplicated.

²The detention ADP includes youth in the Boot Camp / CAP program during FY 1995-96 through FY 2002-03.

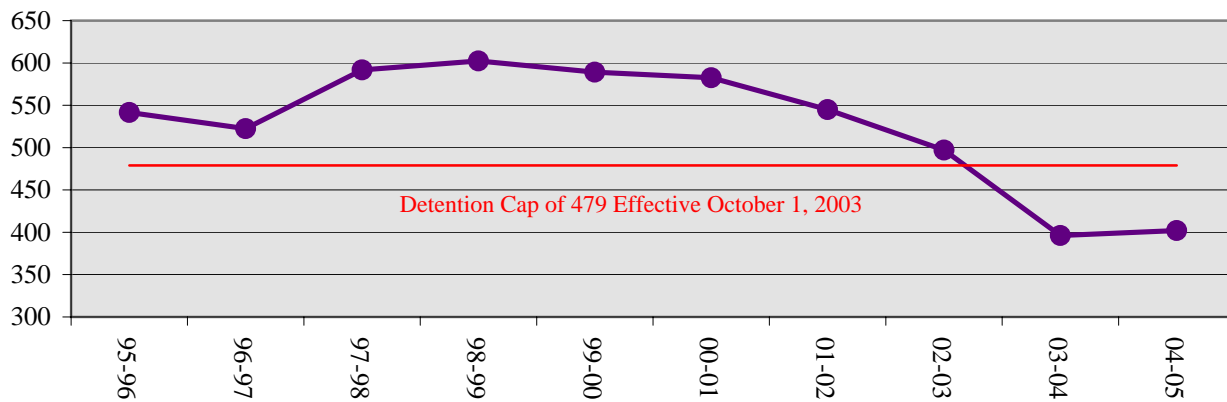
DETAINED YOUTH POPULATION TRENDS

FY 1995-96 Through FY 2004-05

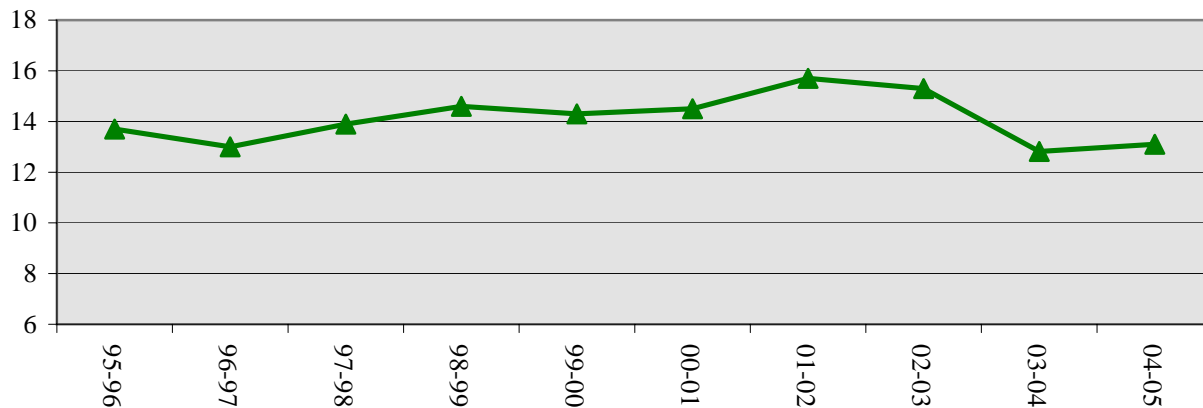
Trends in Detention Admissions



Trends in Detention ADP



Trends in Detention LOS (Days)



DETAINED YOUTH
POPULATION BY PROGRAM

FY 2004-05

	Clients Served ¹	New Admits	ADP	LOS (Days)
<i>State Operated</i>				
Adams YSC	542	721	23.9	12.1
Gilliam YSC	1,248	1,574	62.8	14.5
Grand Mesa YSC	451	587	20.5	12.6
Marvin W. Foote YSC	1,546	1,923	80.8	15.1
Mount View YSC	1,095	1,120	47.3	15.2
Platte Valley YSC	1,343	1,921	61.4	11.3
Pueblo YSC	615	823	29.1	12.4
Spring Creek YSC	1,409	1,759	53.5	10.7
<i>Subtotal State Operated</i>	<i>7,053</i>	<i>10,428</i>	<i>379.2</i>	<i>13.0</i>
<i>Privately Operated</i>				
Brown Center	24	26	1.5	20.7
Emily Griffith	35	36	1.6	16.7
Hilltop Youth Services	40	44	2.7	22.1
Midway Remington	178	192	6.6	12.5
Prowers	6	5	0.8	64.2
Robert DeNier	135	175	7.1	14.5
Youthtrack Alamosa	45	64	2.5	14.0
<i>Subtotal Privately Operated</i>	<i>463</i>	<i>542</i>	<i>22.8</i>	<i>15.2</i>
STATEWIDE TOTAL	7,252	10,970	402.0	13.1

¹ Clients Served is an unduplicated count. Categorical totals are not a sum of individual program Clients Served.

DETAINED YOUTH POPULATION TRENDS

ADP BY PROGRAM

	FY 2001-02	FY 2002-03	FY 2003-04	FY 2004-05
<i>State Operated</i>				
Adams YSC	31.3	29.2	23.6	23.9
Gilliam YSC	71.7	73.7	62.6	62.8
Grand Mesa YSC	31.5	27.4	21.6	20.5
Marvin Foote YSC	79.4	68.5	74.6	80.8
Mount View YSC	54.8	49.6	47.8	47.3
Platte Valley YSC	74.2	70.4	62.2	61.4
Pueblo YSC	42.1	41.6	27.7	29.1
Spring Creek YSC	81.5	67.7	56.2	53.5
<i>Subtotal State Operated</i>	<i>466.5</i>	<i>428.2</i>	<i>376.4</i>	<i>379.2</i>
<i>Privately Operated</i>				
Brown Center	0.0	0.0	1.3	1.5
Colorado West	2.4	1.4	1.4	0.0
Dahlia Street	27.0	24.5	0.7	0.0
Emily Griffith	0.0	0.0	0.4	1.6
Gateway (Central)	0.0	0.0	0.0	0.0
Gateway (Southern)	1.6	1.2	0.0	0.0
Hilltop Youth Services ¹	6.5	2.7	1.9	2.7
LaPlata Youth Services	0.0	0.0	0.0	0.0
Midway Shelter	8.6	7.0	0.2	0.0
Midway Remmington	0.0	0.0	4.4	6.6
Moffat County	0.0	0.0	0.0	0.0
Prowers	0.0	0.8	0.6	0.8
Robert DeNier	13.2	12.0	7.4	7.1
Shiloh	0.0	0.5	0.0	0.0
Trailhead	0.3	1.2	0.0	0.0
Youthtrack Alamosa	6.1	4.2	1.5	2.5
Youthtrack Fillmore	6.7	6.5	0.0	0.0
Community Accountability ²	6.1	7.1	0.0	0.0
<i>Subtotal Privately Operated</i>	<i>78.5</i>	<i>68.9</i>	<i>19.8</i>	<i>22.8</i>
STATEWIDE DETENTION	545.0	497.1	396.2	402.0

¹Includes Brown Center, Operated by Hilltop Youth Services, during FY 2001-02 and FY 2002-03.

²The detention ADP includes youth in the Community Accountability Program during FY 2001-02 through FY 2002-03.

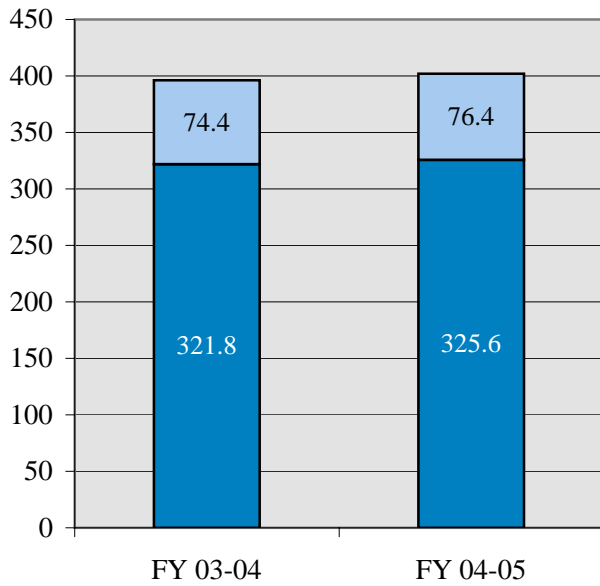
DETAINED YOUTH
DEMOGRAPHIC TRENDS

	FY 2003-04				FY 2004-05				
	New Admits	%	ADP	LOS ¹	New Admits	%	ADP	LOS ¹	
GENDER									
Male	8,552	76.7%	321.8	13.5	8,385	76.4%	325.6	13.9	
Female	2,596	23.3%	74.4	10.5	2,585	23.6%	76.4	10.5	
TOTAL	11,148	100%	396.2	12.8	10,970	100%	402.0	13.1	
ETHNICITY									
Anglo-American	4,703	42.2%	167.2	12.6	4,866	44.3%	171.9	12.6	
African-American	1,618	14.5%	61.8	14.1	1,720	15.7%	65.9	13.8	
Hispanic/Latino	3,996	35.8%	143.3	13.0	4,034	36.8%	151.4	13.5	
Native American	133	1.2%	5.4	15.2	142	1.3%	6.4	16.3	
Asian-American	97	0.9%	3.0	10.7	64	0.6%	1.9	11.7	
Other	601	5.4%	15.5	11.9	144	1.3%	4.5	11.1	
AGE									
9 Years	0	0.0%	0.0	0.0	3	0.0%	0.0	3.3	
10 Years	15	0.1%	0.2	4.4	20	0.2%	0.3	5.7	
11 Years	76	0.7%	1.7	7.5	57	0.5%	1.7	9.3	
12 Years	289	2.6%	7.1	8.2	224	2.0%	7.3	11.9	
13 Years	731	6.6%	25.3	12.1	677	6.2%	22.9	12.0	
14 Years	1,522	13.7%	54.2	12.7	1,475	13.4%	55.0	13.3	
15 Years	2,448	22.0%	90.4	13.3	2,483	22.6%	90.1	13.1	
16 Years	2,861	25.7%	105.3	13.4	2,914	26.6%	113.5	13.9	
17 Years	3,177	28.5%	111.5	12.8	3,094	28.2%	110.6	12.8	
18 Years	17	0.2%	0.3	6.8	17	0.2%	0.4	6.7	
19 Years and Older	4	0.0%	0.1	0.8	6	0.1%	0.2	13.0	
Data Not Available	8	0.1%	0.2	N/A	0	0.0%	0.0	N/A	
Average Age at Admission			16.0 Years			16.0 Years			
Prior Admissions									
None	4,093	36.7%	99.0	8.6	4,078	37.2%	104.8	9.1	
One	2,357	21.1%	84.9	13.0	2,266	20.7%	87.7	13.8	
Two or more	4,698	42.1%	212.3	16.4	4,626	42.2%	209.5	16.3	
Program Type									
State Operated	10,677	95.8%	376.4	12.7	10,428	95.1%	379.2	13.0	
Privately Operated	471	4.2%	19.8	15.4	542	4.9%	22.8	15.2	

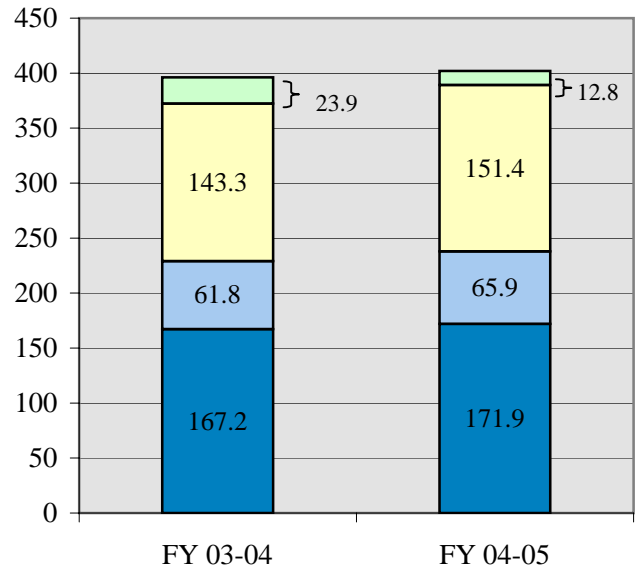
¹Detained LOS expressed in days.

DETAILED YOUTH DEMOGRAPHIC TRENDS

Detention ADP By Gender

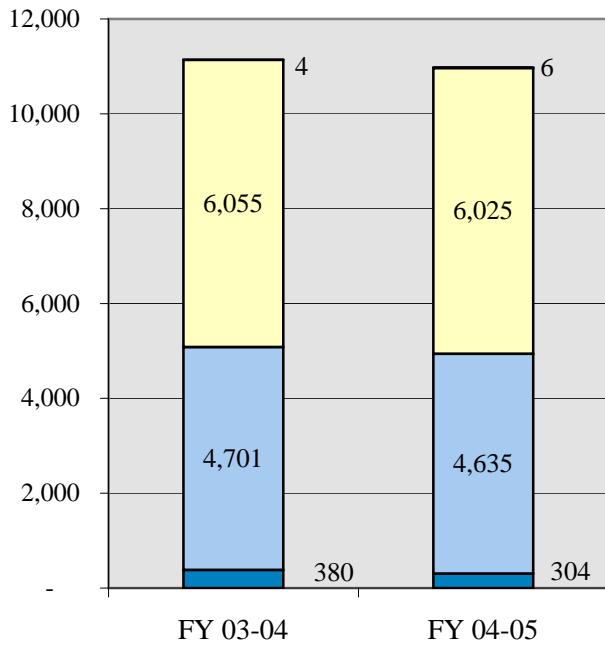


Detention ADP by Ethnicity

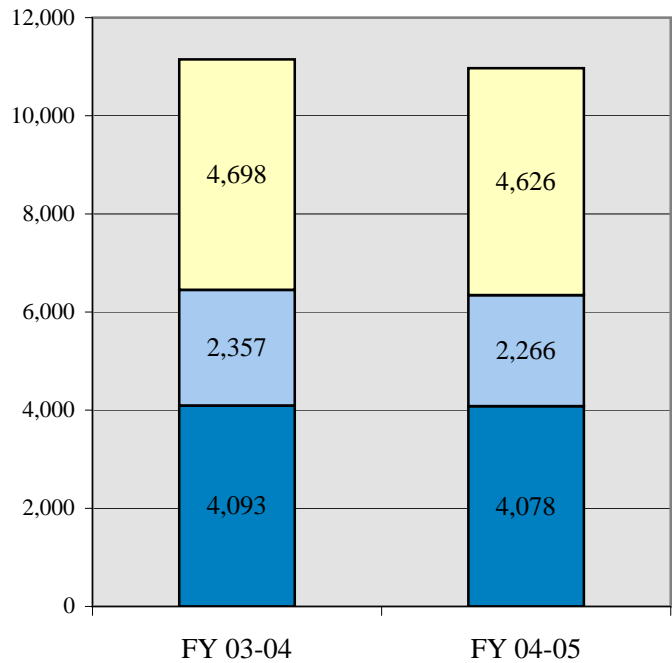


- Male
 - Female
 - Anglo
 - African-American
 - Hispanic/Latino
 - Other*
- *Other includes Native American, Asian American etc.

Detention Admissions by Age at Admissions



Detention Admissions by Prior Adjudications



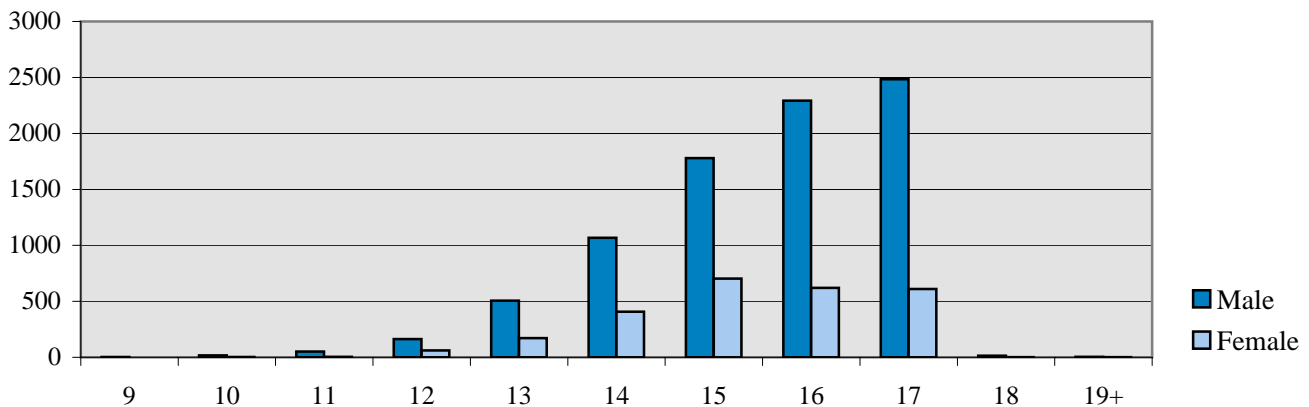
- 9-12 Years
- 13-15 Years
- 16-18 Years
- 19-21 Years
- None
- One
- Two or more

FY 2003-04 Data Not Available N=8

DETAINED YOUTH
DEMOGRAPHIC TRENDS BY GENDER

	MALES				FEMALES			
	FY 2003-04		FY 2004-05		FY 2003-04		FY 2004-05	
	N	%	N	%	N	%	N	%
DEMOGRAPHIC DATA								
Ethnicity								
Anglo-American	3,569	41.7%	3,578	42.7%	1,134	43.7%	1,288	49.8%
African-American	1,271	14.9%	1,364	16.3%	347	13.4%	356	13.8%
Hispanic/Latino	3,132	36.6%	3,183	38.0%	864	33.3%	851	32.9%
Native American	89	1.0%	110	1.3%	44	1.7%	32	1.2%
Asian-American	71	0.8%	52	0.6%	26	1.0%	12	0.5%
Other	420	4.9%	98	1.2%	181	7.0%	46	1.8%
TOTAL NEW ADMISSIONS	8,552	100%	8,385	100%	2,596	100%	2,585	100%
Age at Admission								
9 Years	0	0.0%	3	0.0%	0	0.0%	0	0.0%
10 Years	14	0.2%	17	0.2%	1	0.0%	3	0.1%
11 Years	64	0.7%	52	0.6%	11	0.4%	5	0.2%
12 Years	240	2.8%	163	1.9%	49	1.9%	61	2.4%
13 Years	548	6.4%	506	6.0%	183	7.0%	171	6.6%
14 Years	1,086	12.7%	1,067	12.7%	436	16.8%	408	15.8%
15 Years	1,781	20.8%	1,780	21.2%	667	25.7%	703	27.2%
16 Years	2,223	26.0%	2,293	27.3%	638	24.6%	621	24.0%
17 Years	2,571	30.1%	2,484	29.6%	606	23.3%	610	23.6%
18 Years	16	0.2%	15	0.2%	1	0.0%	2	0.1%
19 Years and Older	3	0.0%	5	0.1%	1	0.0%	1	0.0%
Data Not Available	6	0.1%	0	0.0%	3	0.1%	0	0.0%
Average Age at Admission	16.0 Years		16.1 Years		15.8 Years		15.9 Years	
Prior Admissions								
None	3,970	34.2%	2,978	35.5%	1,035	39.9%	1,100	42.6%
One	2,196	18.9%	1,715	20.5%	525	20.2%	551	21.3%
Two or more	5,423	46.8%	3,692	44.0%	1,036	39.9%	934	36.1%

FY 2004-05 Age at Admission



COMMITTED YOUTH POPULATION TRENDS

Ten Year Commitment Trends

Fiscal Year	Clients Served¹	Percentage Change +/-	New Commits	Percentage Change +/-	Residential ADP²	Percentage Change +/-	LOS (Months)	Percentage Change +/-
1995-96	1,769	8.0%	693	14.4%	762.9	20.4%	13.7	-0.7%
1996-97	1,891	6.9%	762	10.0%	929.3	21.8%	14.5	5.8%
1997-98	2,046	8.2%	781	2.5%	973.5	4.8%	15.1	4.1%
1998-99	2,269	10.9%	878	12.4%	1,112.2	14.2%	15.6	3.3%
1999-00	2,544	12.1%	848	-3.4%	1,198.3	7.7%	15.5	-0.6%
2000-01	2,702	6.2%	766	-9.7%	1,251.8	4.5%	16.3	5.2%
2001-02	2,747	1.7%	843	10.1%	1,266.8	1.2%	17.7	8.6%
2002-03	2,689	-2.1%	824	-2.3%	1,327.8	4.8%	19.5	10.2%
2003-04	2,840	5.6%	924	12.1%	1,385.8	4.4%	18.9	-3.1%
2004-05	2,974	4.7%	950	2.8%	1,453.5	4.9%	18.8	-0.5%

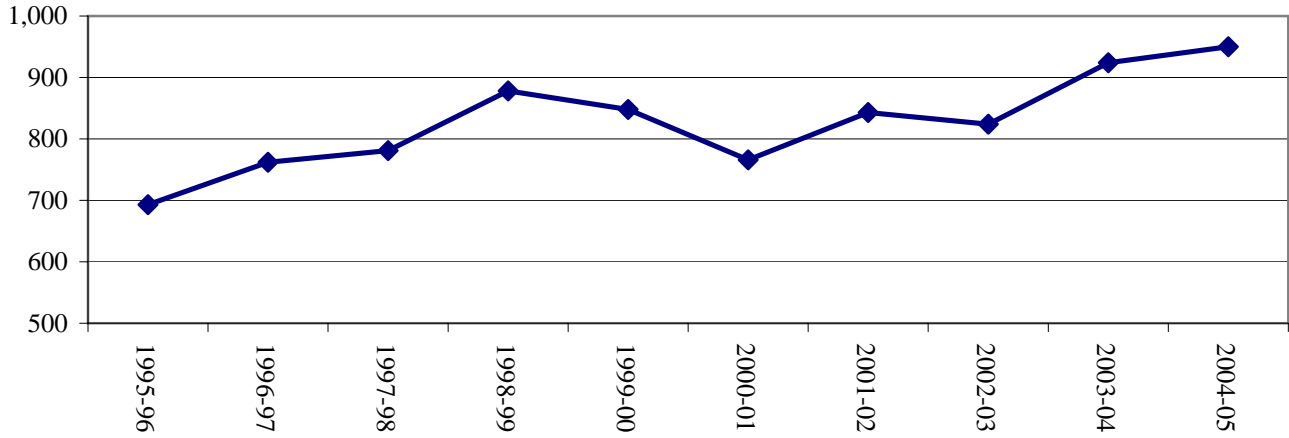
During FY 2004-05, the commitment population experienced a year of growth across three commitment categories. Residential ADP experienced the greatest rate of increase, growing 5% since last fiscal year. Clients served also increased by 5%, and new commitments increased by 3%. Residential committed length of stay (LOS) experienced a decline, but dropped only half a percent to 18.8 months after dropping 3% from 19.5 to 18.9 months in the 2003-04 fiscal year.

¹Clients Served is an unduplicated count.

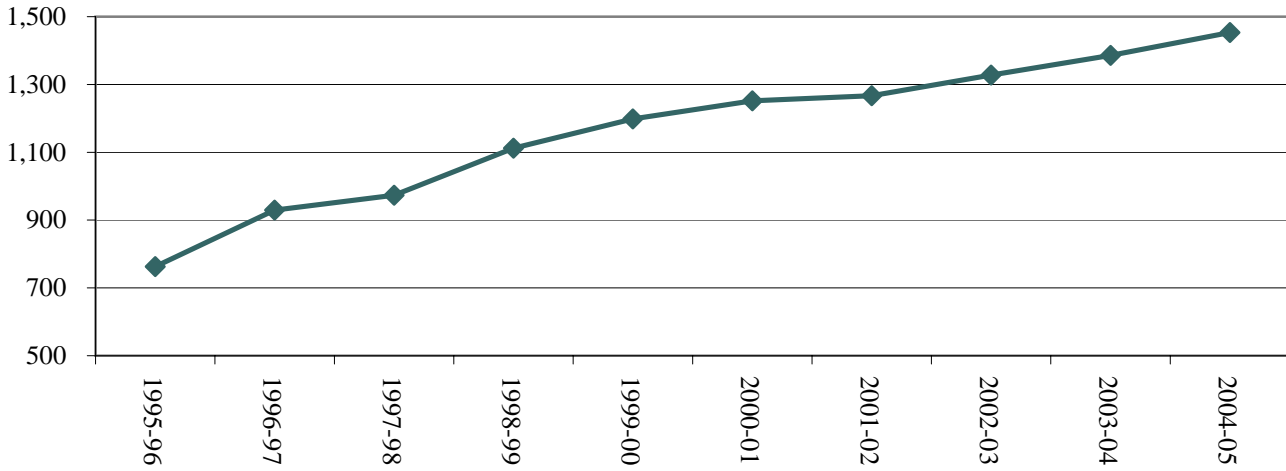
²Residential ADP includes secure, staff-supervised, and community based residential treatment programs.

COMMITTED YOUTH POPULATION TRENDS

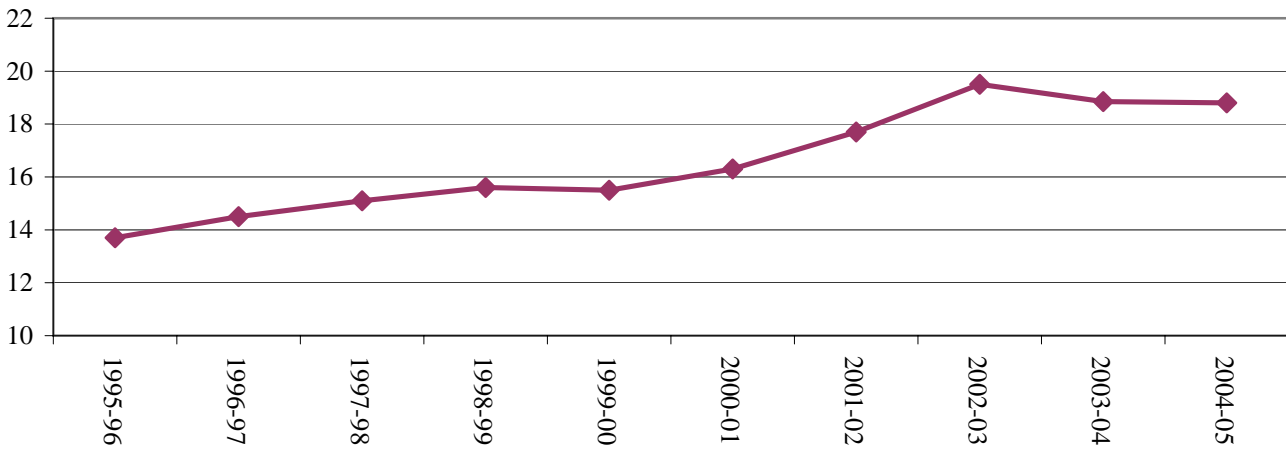
Trends in New Commitments



Trends in Residential ADP



Residential LOS



COMMITTED YOUTH
POPULATION BY PROGRAM

FY 2004-05

	Clients Served ¹	ADP
Assessment		
Grand Mesa YSC	121	7.6
Marvin W. Foote YSC	74	0.2
Mount View YSC	431	28.9
Platte Valley YSC	267	21.6
Robert Denier YSC	29	1.6
Spring Creek YSC	215	11.2
Zeb Pike YSC	3	1.1
Total Assessment	1,036	72.0
Secure		
<i>State Operated</i>		
Grand Mesa YSC	201	40.2
Lookout Mountain YSC	401	208.1
Marvin W. Foote YSC	258	25.3
Mount View YSC	558	63.0
Platte Valley YSC	344	55.3
Spring Creek YSC	265	32.1
Zeb Pike YSC	84	38.7
<i>Subtotal State Operated</i>	<i>1,569</i>	<i>462.8</i>
<i>Privately Operated</i>		
Betty K. Marler Center	63	19.8
Robert Denier YSC	54	16.1
<i>Subtotal Privately Operated</i>	<i>116</i>	<i>35.9</i>
Total Secure	1,613	498.7
Staff-Supervised (Contract)		
Brown Center	7	1.6
Cedar Springs	39	16.4
Devereux Cleo Wallace	2	0.2
Emily Griffith Center	34	16.8
El Pueblo Ranch	36	14.8
Excelsior Youth Center	3	1.1
Glen Mills Schools	3	2.2
Hilltop West	33	9.8
Jefferson Hills	217	92.1
Kidz Ark	14	5.9
Mountain Star Center	10	4.5
Ridgeview YSC	808	454.9
Southern Peaks	78	26.9
Turning Point	18	3.2
Total Staff-Supervised (Contract)	1,271	650.2

¹Clients Served is an unduplicated count. Categorical totals are not a sum of individual program counts and are not available for all categories.

**COMMITTED YOUTH POPULATION
BY PROGRAM**

FY 2004-05

	Clients Served ¹	ADP
Community (Contract)		
Alternative Youth Adventures	189	26.6
Boulder Community Treatment Center	2	0.4
COMCOR	12	1.8
Community Correction (Mesa County)	22	4.3
Dale House	44	12.7
Daybreak-Princeton	35	8.4
DAYS	26	10.7
Devereux Cleo Wallace	34	13.8
Emily Griffith Center	11	2.7
Gateway	7	1.4
Hilltop	19	3.4
Longmont Community Treatment Cente	1	0.2
Lost and Found	47	13.3
Lyle Alzado Youth Home	18	4.3
Miranda Place	10	2.0
Prairie View	5	0.5
Restitution Center	1	1.0
ROP	12	4.5
Synergy	15	4.3
Third Way Center	47	16.1
Turning Point	85	24.3
Youthtrack Excel	56	13.2
Youthtrack Jeffco	26	8.3
Youthtrack Grand	10	2.0
Youthtrack San Louis Valley	6	2.6
Youthtrack Work and Learn	69	10.6
Youth Ventures	35	9.7
Total Community (Contract)	703	203.1
Other Residential²	N/A	29.5

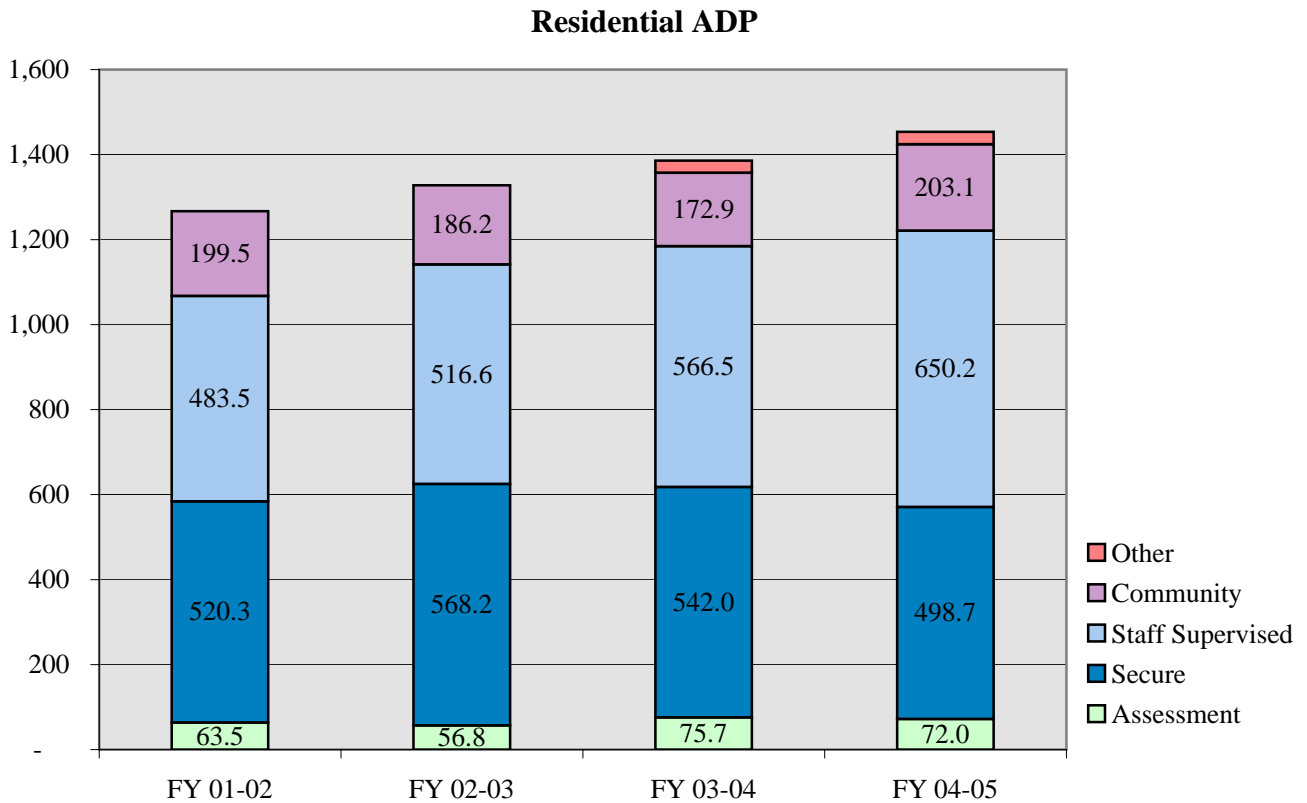
STATEWIDE COMMITMENT RESIDENTIAL	2,404	1,453.5
---	--------------	----------------

¹Clients Served is an unduplicated count. Categorical totals are not a sum of individual program counts and are not available for all categories.

²Other Residential includes Group Homes, Job Corps, Hospitalizations etc.

COMMITTED YOUTH POPULATION TRENDS
AVERAGE DAILY POPULATION

	FY 2001-02	FY 2002-03	FY 2003-04	FY 2004-05
Assessment	63.5	56.8	75.7	72.0
Secure	520.3	568.2	542.0	498.7
Staff Supervised	483.5	516.6	566.5	650.2
Community	199.5	186.2	172.9	203.1
Other Residential ¹	0.0	0.0	28.8	29.5
Total Residential ADP	1,266.8	1,327.8	1,385.8	1,453.5



¹Other Residential includes Group Homes, Job Corps, Hospitalizations etc.

COMMITTED YOUTH
DEMOGRAPHIC TRENDS

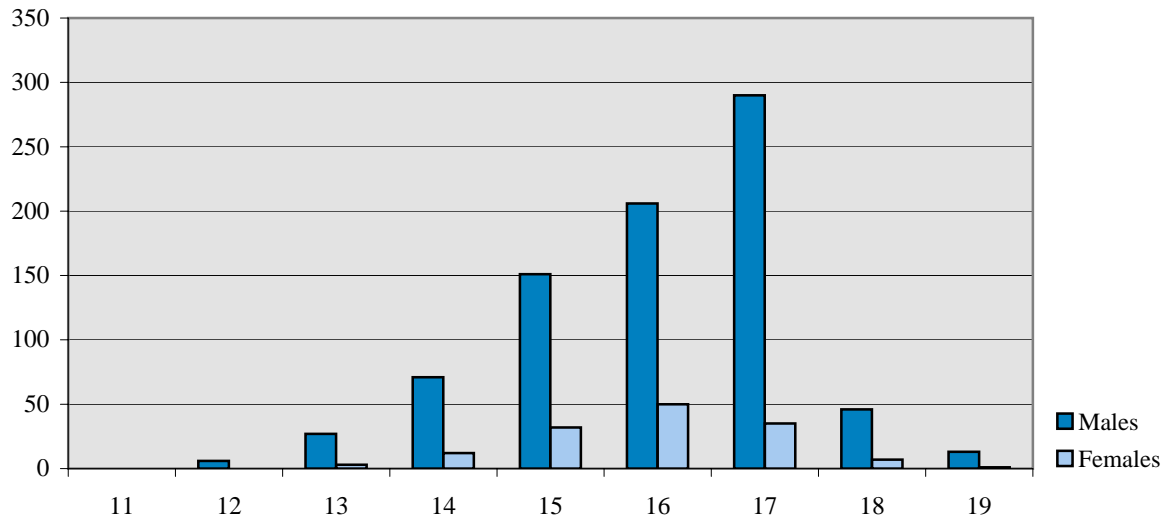
	FY 2003-04			FY 2004-05		
	New Commits	%	ADP	New Commits	%	ADP
GENDER						
Male	793	85.8%	1,225.4	810	85.3%	1,271.2
Female	131	14.2%	160.4	140	14.7%	182.3
TOTAL	924	100%	1,385.8	950	100.0%	1,453.5
ETHNICITY						
Anglo-American	443	47.9%	629.4	417	43.9%	673.0
African-American	157	17.0%	242.8	160	16.8%	258.3
Hispanic/Latino	284	30.7%	455.1	339	35.7%	473.0
Native American	14	1.5%	23.7	22	2.3%	26.9
Asian-American	10	1.1%	13.4	4	0.4%	12.4
Other	16	1.7%	21.3	8	0.8%	10.0
AGE¹						
11 Years	1	0.0%	0.0	0	0.0%	0.0
12 Years	7	0.8%	2.0	6	0.6%	0.1
13 Years	17	1.8%	5.7	30	3.2%	12.2
14 Years	82	8.9%	27.3	83	8.7%	33.9
15 Years	189	20.5%	105.2	183	19.3%	93.0
16 Years	274	29.7%	242.6	256	26.9%	247.9
17 Years	318	34.4%	380.7	325	34.2%	376.5
18 Years	34	3.7%	407.6	53	5.6%	426.4
19 Years or Older	2	0.2%	214.8	14	1.5%	263.4
Average Age at Commitment:	16.5 Years			16.5 Years		
Rate of New Commitments per 10,000 Juvenile Population	17.7			18.3		

¹New Commitment counts for each age category correspond to age at commitment. ADP figures for each age category, however, are based on the youth's age on the last day of the fiscal year.

COMMITTED YOUTH
DEMOGRAPHIC TRENDS BY GENDER

	MALES				FEMALES			
	FY 2003-04		FY 2004-05		FY 2003-04		FY 2004-05	
	N	%	N	%	N	%	N	%
DEMOGRAPHIC DATA¹								
Ethnicity								
Anglo:	375	47.3%	343	42.3%	68	51.9%	74	52.9%
African-American:	134	16.9%	137	16.9%	23	17.6%	23	16.4%
Hispanic/Latino:	247	31.1%	304	37.5%	37	28.2%	35	25.0%
Native American:	13	1.6%	16	2.0%	1	0.8%	6	4.3%
Asian-American:	9	1.1%	4	0.5%	1	0.8%	0	0.0%
Other:	15	1.9%	6	0.7%	1	0.8%	2	1.4%
TOTAL NEW COMMITMENTS	793	100%	810	100%	131	100%	140	100%
Age								
11 Years	1	0.1%	0	0.0%	0	0.0%	0	0.0%
12 Years	3	0.4%	6	0.7%	0	0.0%	0	0.0%
13 Years	15	1.9%	27	3.3%	4	3.1%	3	2.1%
14 Years	64	8.1%	71	8.8%	2	1.5%	12	8.6%
15 Years	160	20.2%	151	18.6%	18	13.7%	32	22.9%
16 Years	239	30.1%	206	25.4%	29	22.1%	50	35.7%
17 Years	278	35.1%	290	35.8%	35	26.7%	35	25.0%
18 Years	31	3.9%	46	5.7%	40	30.5%	7	5.0%
19 Years	2	0.3%	13	1.6%	3	2.3%	1	0.7%
Average Age at Commitment	16.4 Yrs		16.5 Yrs		16.1 Yrs.		16.4 Yrs	

FY 2004-05 Age at Commitment



¹Data based on new commitments.

NEW COMMITMENT TRENDS
BY GENDER

	MALES				FEMALES			
	FY 2003-04		FY 2004-05		FY 2003-04		FY 2004-05	
	N	%	N	%	N	%	N	%
NEW COMMITMENT PROFILE								
Prior Adjudications								
None	191	24.1%	216	26.7%	48	36.6%	71	50.7%
One	227	28.6%	253	31.2%	46	35.1%	36	25.7%
Two or more	370	46.7%	341	42.1%	36	27.5%	33	23.6%
Data Not Available	5	0.6%	0	0.0%	1	0.8%	0	0.0%
TOTAL NEW COMMITMENTS	793	100%	810	100%	131	100%	140	100%
Prior Out-of-Home Placements								
None	245	30.9%	275	34.0%	18	13.7%	24	17.1%
One	185	23.3%	190	23.5%	30	22.9%	29	20.7%
Two or more	363	45.8%	345	42.6%	83	63.4%	87	62.1%
Runaway History¹								
No runaway history	263	33.2%	302	37.3%	17	13.0%	25	17.9%
Runaway history	519	65.4%	481	59.4%	113	86.3%	114	81.4%
Data Not Available	11	1.4%	27	3.3%	1	0.8%	1	0.7%
Assessed Substance Abuse Counseling Needs²								
Prevention	117	14.8%	119	14.7%	14	10.7%	16	11.4%
Intervention	251	31.7%	197	24.3%	40	30.5%	27	19.3%
Treatment	420	53.0%	467	57.7%	76	58.0%	96	68.6%
Data Not Available	5	0.6%	27	3.3%	1	0.8%	1	0.7%
Assessed Mental Health Needs³								
High-Moderate to Severe	219	39.5%	385	49.2%	41	40.2%	79	60.3%
Low Moderate/None to Slight	336	60.5%	398	50.8%	61	59.8%	52	39.7%
Data Not Available	238	N/A	27	N/A	29	N/A	9	N/A
Average Age at First Adjudication:	14.1		13.8		14.2		14.5	

¹Refers to running away from a secure or nonsecure placement as well as from home during the 12 months prior to commitment.

²Substance abuse history and treatment needs are assessed within one month of commitment. Youth with minimal substance abuse history and/or treatment needs are identified for prevention services whereas those reporting the greatest history of abuse and treatment needs are targeted for substance abuse treatment services.

³Colorado Client Assessment Record used to assess mental health needs within one month of commitment. Percentages are based on total CCARs given and do not include missing data.

NEW COMMITMENT TRENDS

BY GENDER

MALES

FEMALES

	MALES				FEMALES			
	FY 2003-04		FY 2004-05		FY 2003-04		FY 2004-05	
	N	%	N	%	N	%	N	%

COMMITMENT DATA

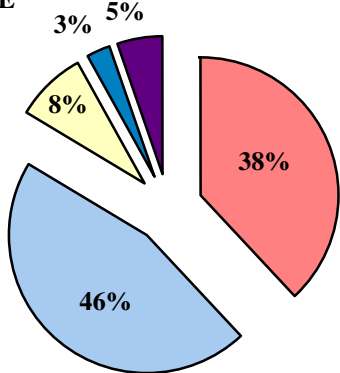
Offense Type								
Person Felony	132	16.6%	148	18.3%	15	11.5%	18	12.9%
Person Misdemeanor	132	16.6%	144	17.8%	26	19.8%	32	22.9%
Property Felony	309	39.0%	289	35.7%	39	29.8%	35	25.0%
Property Misdemeanor	73	9.2%	61	7.5%	16	12.2%	23	16.4%
Drug Felony	53	6.7%	57	7.0%	14	10.7%	11	7.9%
Drug Misdemeanor	12	1.5%	7	0.9%	2	1.5%	2	1.4%
Weapons Felony	7	0.9%	10	1.2%	0	0.0%	1	0.7%
Weapons Misdemeanor	6	0.8%	11	1.4%	0	0.0%	3	2.1%
Other	42	5.3%	41	5.1%	15	11.5%	9	6.4%
Data Not Available	27	3.4%	42	5.2%	4	3.1%	6	4.3%
TOTAL NEW COMMITMENTS	793	100%	810	100%	131	100%	140	100%

Sentence Type

Non-Mandatory	576	72.6%	583	72.0%	112	85.5%	118	84.3%
Mandatory	147	18.5%	128	15.8%	12	9.2%	16	11.4%
Repeat	53	6.7%	72	8.9%	6	4.6%	4	2.9%
Violent	5	0.6%	5	0.6%	0	0.0%	1	0.7%
Aggravated Juvenile	2	0.3%	14	1.7%	0	0.0%	0	0.0%
Data Not Available	10	1.3%	8	1.0%	1	0.8%	1	0.7%

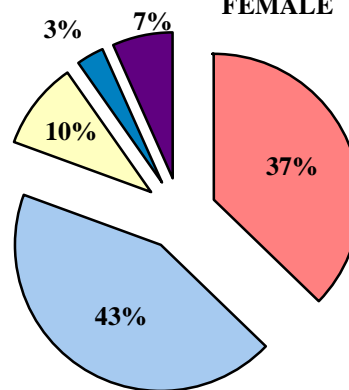
FY 2004-05 Offense Type¹

MALE



Missing N=42

FEMALE



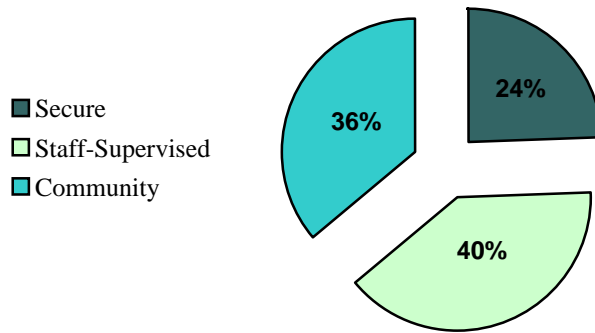
Missing N=6

¹Felony and Misdemeanor counts are combined

COMMITTED YOUTH
COMMITMENT CLASSIFICATION

COMMITMENT CLASSIFICATION	FY 2003-04		FY 2004-05	
	N	%	N	%
Secure	211	22.8%	226	23.8%
Staff-Supervised	425	46.0%	364	38.3%
Community	286	31.0%	335	35.3%
Data Not Available	2	0.2%	25	2.6%
Total	924	100%	950	100%

FY 2004-05 Commitment Classification



Missing N=25

Offense Severity Score

Serious Person 8+	16	17	18	19	20
Major Property Lesser Person 3 - 7	11	12	13	14	15
Minor Property 1 - 2	6	7	8	9	10
Other Less Serious 0	1	2	3	4	5
	1-3	4-7	8-10	11-12	13-14

Recidivism Risk Score

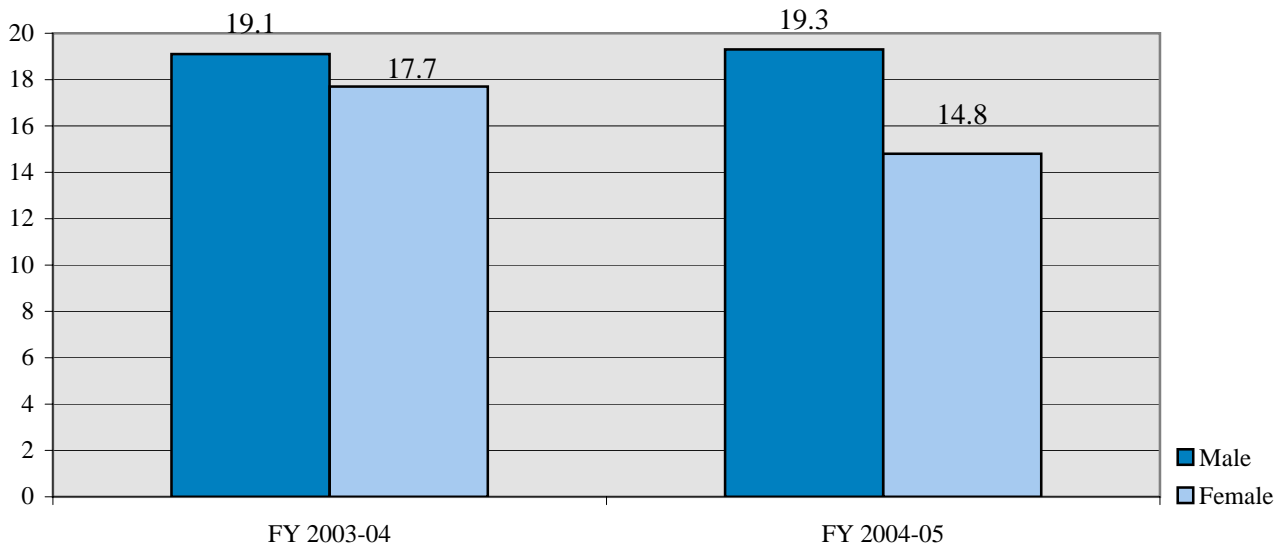


COMMITTED YOUTH
LENGTH OF STAY TRENDS

Residential LOS

	FY 2003-04	FY 2004-05
GENDER		
Male	19.1	19.3
Female	17.7	14.8
TOTAL RESIDENTIAL LOS	18.9	18.8
ETHNICITY		
Anglo-American	18.5	18.5
African-American	20.0	19.7
Hispanic/Latino	19.2	18.9
Native American	19.1	19.6
Asian-American	16.6	16.3
Other	17.8	3.7
AGE¹		
11 Years	N/A	9.2
12 Years	26.6	28.5
13 Years	27.1	30.6
14 Years	24.2	23.7
15 Years	21.4	20.6
16 Years	18.1	17.9
17 Years	16.2	16.3
18 Years	15.2	16.2
19 Years	14.6	17.3
20 Years	3.1	N/A

Residential LOS



**COMMITTED YOUTH
PAROLE TRENDS**

	FY 2003-04			FY 2004-05		
	ADP	%	LOS ¹	ADP	%	LOS ¹
DYC REGION						
Central	213.5	39.9%	8.4	206.5	42.1%	7.1
Northeast	123.4	23.0%	8.1	113.7	23.2%	6.9
Southern	123.4	23.0%	7.5	98.2	20.0%	7.1
Western	72.9	13.6%	7.6	72.0	14.7%	7.4
Data Not Available	2.4	0.5%	6.6	0.0	0.0%	N/A
TOTAL	535.6	100%	8.0	490.3	100%	7.1
GENDER						
Male	473.4	88.4%	8.0	433.7	88.5%	7.3
Female	62.2	11.6%	8.1	56.6	11.5%	5.9
ETHNICITY						
Anglo American	260.1	48.6%	7.9	230.4	47.0%	7.3
African-American	75.9	14.2%	8.2	80.8	16.5%	7.2
Hispanic/Latino	177.2	33.1%	8.2	166.5	34.0%	7.0
Native American	0.0	0.0%	7.7	6.7	1.4%	6.6
Asian-American	5.6	1.0%	7.7	5.2	1.1%	6.0
Other	16.9	3.1%	7.6	0.6	0.1%	N/A
AGE²						
12 Years	0.0	0.0%	N/A	0.0	0.0%	6.1
13 Years	1.7	0.3%	6.0	0.6	0.1%	12.0
14 Years	6.9	1.3%	8.0	1.3	0.3%	9.2
15 Years	39.2	7.3%	10.1	8.8	1.8%	10.0
16 Years	96.4	18.0%	9.4	33.2	6.8%	9.3
17 Years	146.4	27.3%	8.3	83.2	17.0%	6.8
18 Years	157.8	29.5%	7.6	144.5	29.5%	6.7
19 Years and older	87.2	16.3%	7.5	218.6	44.6%	6.2

¹Parole LOS expressed in months.

²LOS for each age category corresponds to age at the time of parole. ADP figures are based on the youth's age on the last day of the fiscal year.

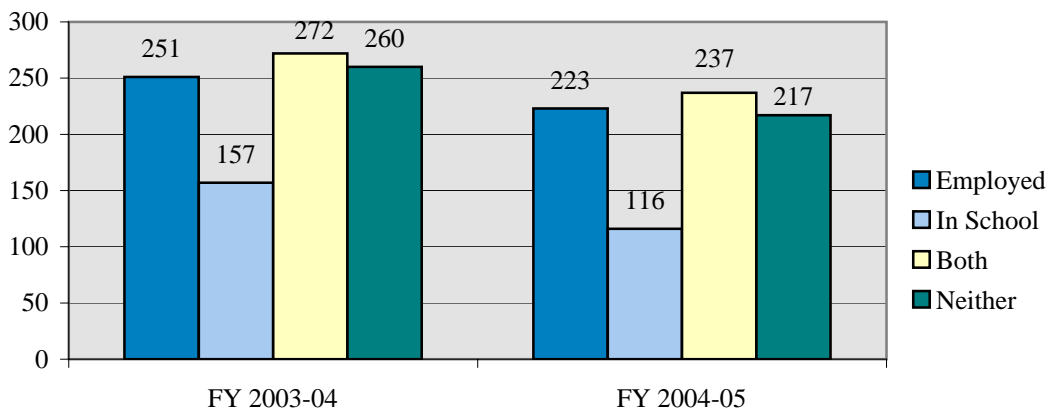
COMMITTED YOUTH DISCHARGE TRENDS

	FY 2003-04		FY 2004-05	
	N	%	N	%
DISCHARGED YOUTH				
DISCHARGE PLACEMENT				
Adult Jail/ Corrections	110	11.0%	96	11.6%
Home	815	81.3%	685	82.4%
Group Living	23	2.3%	9	1.1%
Other Placement	48	4.8%	39	4.7%
Escape	7	0.7%	2	0.2%
TOTAL	1,003	100%	831	100%

JOB/ SCHOOL STATUS AT DISCHARGE				
Employed Only	251	25.0%	223	26.8%
Enrolled in School Only	157	15.7%	116	14.0%
Employed and Enrolled in School	272	27.1%	237	28.5%
Unemployed and Unenrolled	260	25.9%	217	26.1%
Data Not Available	63	6.3%	38	4.6%

PAROLE ADJUSTMENT AT DISCHARGE				
Satisfactory to Excellent	612	61.0%	514	61.9%
Poor to Unsatisfactory	322	32.1%	252	30.3%
Not on Parole at Time of Discharge	46	4.6%	38	4.6%
Data Not Available	23	2.3%	27	3.2%

Job / School Status at Parole Discharge



COMMITTED YOUTH DEMOGRAPHIC TRENDS
FY 2004-05 DATA BY REGION

	CENTRAL			NORTHEAST			SOUTHERN			WESTERN		
	New ¹	ADP	LOS ²	New ¹	ADP	LOS ²	New ¹	ADP	LOS ²	New ¹	ADP	LOS ²
GENDER												
Male	353	568.9	20.4	210	310.5	18.8	143	250.5	18.8	104	141.3	17.5
Female	55	70.4	15.1	37	38.5	13.7	23	51.2	15.6	25	22.3	14.8
TOTAL	408	639.3	19.8	247	348.9	18.2	166	301.7	18.4	129	163.6	17.3
ETHNICITY												
Anglo-American	116	226.8	19.7	126	174.5	17.7	84	156.8	18.7	91	115.0	17.2
African-American	123	181.6	19.7	12	20.3	17.8	23	53.1	20.7	2	3.3	16.4
Hispanic/Latino	158	212.4	20.2	101	139.4	18.9	54	86.5	17.2	26	34.8	17.4
Native American	5	8.1	21.3	5	6.8	16.5	3	2.9	20.2	9	9.1	18.6
Asian-American	2	6.2	15.6	1	4.1	17.5	1	2.1	N/A	0	0.0	N/A
Other	4	4.3	3.7	2	3.9	N/A	1	0.4	N/A	1	1.4	N/A
AGE³												
11 Years	0	0.0	N/A	0	0.0	N/A	0	0.0	N/A	0	0.0	9.2
12 Years	2	0.0	21.1	1	0.0	26.0	2	0.1	24.4	1	0.0	49.8
13 Years	12	5.3	30.8	9	2.2	14.1	4	0.8	38.4	5	3.9	14.7
14 Years	34	14.2	27.1	28	8.6	20.3	12	6.4	18.5	9	4.7	23.0
15 Years	75	39.3	21.6	45	25.9	21.9	39	16.4	18.7	24	11.4	18.5
16 Years	111	107.5	18.6	68	52.5	17.3	42	54.1	17.4	35	33.8	16.8
17 Years	142	167.5	17.0	78	80.6	16.5	59	84.0	16.1	46	44.4	13.7
18 Years	22	190.3	15.3	16	104.3	18.4	8	91.5	20.9	7	40.2	12.9
19 Years and Older	10	115.2	20.1	2	74.8	12.5	0	48.3	18.7	2	25.2	N/A
Average Age at Commitment:	16.6 Years			16.5 Years			16.5 Years			16.5 Years		
SENTENCE TYPE												
Non-Mandatory	304	456.2	19.7	157	204.9	17.2	141	249.9	17.5	99	130.0	16.0
Mandatory	64	136.1	20.0	51	79.9	19.1	17	34.8	22.9	12	10.7	29.7
Repeat	33	35.9	16.4	24	39.5	17.4	6	10.0	14.2	13	15.3	23.8
Violent	3	4.2	29.3	1	2.7	24.4	0	1.2	18.2	2	1.4	N/A
Aggravated Juvenile	1	6.5	42.6	9	20.4	32.3	2	3.8	N/A	2	3.3	N/A
Data Not Available	3	0.4	12.0	5	1.6	10.1	0	2.0	21.3	1	3.0	19.1

¹Indicates new commitments.

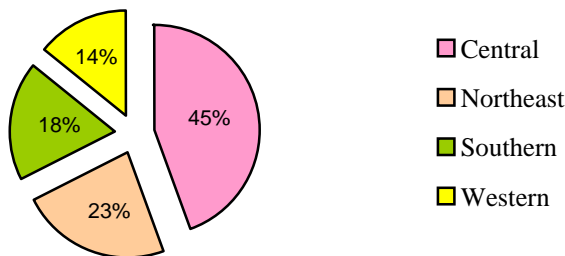
²Residential LOS expressed in months.

³Actual counts and LOS for each age category correspond to age at commitment. ADP figures for each age category are based on the youth's age on the last day of the fiscal year.

COMMITTED YOUTH DEMOGRAPHIC TRENDS
FY 2004-05 DATA BY REGION

	CENTRAL		NORTHEAST		SOUTHERN		WESTERN	
	N	%	N	%	N	%	N	%
DISCHARGED YOUTH								
DISCHARGE PLACEMENT								
Adult Jail/ Corrections Home ¹	59	16.0%	13	6.8%	14	9.2%	10	8.5%
Home ¹	292	79.1%	168	88.0%	127	83.0%	98	83.1%
Group Living	2	0.5%	0	0.0%	0	0.0%	0	0.0%
Other Placement	15	4.1%	9	4.7%	12	7.8%	10	8.5%
Escape	1	0.3%	1	0.5%	0	0.0%	0	0.0%
TOTAL	369	100%	191	100.0%	153	100%	118	100%
JOB/ SCHOOL STATUS								
Employed Only	89	24.1%	68	35.6%	32	20.9%	34	28.8%
Enrolled in School Only	51	13.8%	30	15.7%	19	12.4%	16	13.6%
Employed and Enrolled in School	116	31.4%	34	17.8%	51	33.3%	36	30.5%
Unemployed and Unenrolled	97	26.3%	58	30.4%	36	23.5%	26	22.0%
Data Not Available	16	4.3%	1	0.5%	15	9.8%	6	5.1%
PAROLE ADJUSTMENT								
Satisfactory to Excellent	239	64.8%	102	53.4%	95	62.1%	78	66.1%
Poor to Unsatisfactory	101	27.4%	74	38.7%	45	29.4%	32	27.1%
Not on Parole at Time of Discharge	16	4.3%	11	5.8%	6	3.9%	5	4.2%
Data Not Available	13	3.5%	4	2.1%	7	4.6%	3	2.5%
PROGRAM TYPE								
	LOS (Months) ²							
Secure	9.5		8.6		8.7		8.9	
Staff Supervised	7.5		6.9		6.6		6.2	
Community Residential	2.6		2.7		2.9		1.5	
Total Residential	19.8		18.2		18.4		17.3	
Parole	7.1		6.9		7.1		7.4	
Total Commitment	26.9		25.7		26.2		23.6	

FY 2004-05 Percent of Discharged Youth by Region



¹The 'Home' category includes parent(s), guardian, adoptive family, foster family, relative, spouse, friend, independent living.

²Residential LOS expressed in months.

Glossary of Terms Used

Disclaimer: *These definitions are provided for quick reference purposes only. Please refer to the Colorado Revised Statutes for more complete definitions of legal categories and conditions.*

Adjudication – The result of an adjudicatory hearing in which the court determines that it has been proven beyond a reasonable doubt that a juvenile has committed a delinquent act, or that a juvenile has pled guilty to committing a delinquent act.

Aggravated Offender (Sentence Type) – see *Sentencing Special Offenders*.

Assessment - Youth committed to DYC are assessed to determine a youth's classification level and needs for appropriate placement and program referral.

Average Daily Population (ADP) - The average number of youth present in a facility or program during the reporting period.

Colorado Client Assessment Record (CCAR) - An assessment tool used to evaluate mental health treatment needs.

Community Accountability Program – Youth could be sentenced to the Community Accountability Program (CAP) as a condition of probation, after the cessation of the Regimented Juvenile Training Program. The sentence included a 60-day residential program, focusing on restorative justice and youth skill development. The residential phase was followed by an intensive aftercare program for 120 days, or until the period of probation expires. The aftercare phase, also based on a restorative justice model, focused on continued service delivery to youth and families as well as reintegration into the community. Funding for CAP was eliminated in the FY 2002-03 Supplemental Reduction.

Clients Served: Commitment - The total number of youth served in a particular program during the reporting period. Total clients served in a given category (e.g. secure or staff-supervised) represent unduplicated counts of clients served in those categories. Since youth can be served in more than one type of program in the course of a year, the total clients served in a particular category will not equal the sum of the clients served in each program.

Clients Served: Detention - The total number of youth served in a particular program during the reporting period. Total clients served in a facility or program (e.g. Adams YSC) represents unduplicated counts of clients served in those facilities. Since the same youth can have multiple admissions to detention and be served in more than one particular facility in the course of a year, the total clients served in all facilities will not equal the sum of the clients served in each facility.

Commitment - Commitments are dispositions of juvenile cases resulting in the transfer of legal custody to the Department of Human Services by the court as a result of an adjudicatory hearing on charges of delinquent acts committed by the youth.

Commitment Classification - An objective commitment classification instrument is administered during assessment to guide the placement decisions concerning the type of commitment program most suitable for individual youth given the severity of their commitment offense coupled with the risk of re-offending.

Commitment Length of Stay (LOS) – see ***Total Commitment LOS***.

Commitment Sentences - Juveniles who have been adjudicated delinquent and committed to the Division of Youth Corrections can be given either non-mandatory or mandatory sentences. Mandatory sentences require that a youth spend a specified minimum amount of time in out-of-home placement and can include repeat and violent offenders. Juveniles can also be sentenced as aggravated offenders (Section 19-2-601, C.R.S.).

Community Residential Placement – DYC contracts with a number of private vendors to provide community-based programs to youth presenting the lowest risk of re-offending and youth transitioning from more secure programs. These programs include both group residential care and foster care programs.

Detention - The custodial status of youth who are being confined or supervised after arrest or while awaiting the completion of judicial proceedings. Detention youth are served in secure, state-operated or staff-secure, privately-operated facilities or in non-residential, community-based supervision programs.

Detention Admission - Each admission to detention for temporary custody of youth is tracked under the admission category. In contrast to unduplicated counts of clients served in detention, one youth can have multiple admissions for a single incident. For example, if a youth is admitted to detention on a pretrial basis (preadjudicated) and released, a later sentencing to detention on the original charge would count as a separate admission, even though it is the same youth and the same incident. Likewise, if the youth serves the sentence on weekends, each weekend admission counts as a separate admission.

Detention Sentence - The court imposed sanction of confinement to a detention facility or the Community Accountability Program as a disposition of a delinquency adjudication. Major sentence types include probation sentences, traffic sentences, handgun sentences, municipal sentences, game and fish sentences, contempt sentences, and non-probation sentences for a delinquent act.

Length of Stay (LOS): Commitment - There are several variations of the length of stay measure. All commitment LOS figures are measured in months and are calculated for those youth who spent time in the program for which LOS is reported (e.g., secure) prior to discharge from DYC custody (including either residential or nonresidential parole supervision).

Length of Stay (LOS): Detention - The amount of time spent in a detention facility or program during the time period. All detention LOS figures are measured in days.

Mandatory Sentence Offender- See ***Sentencing Special Offenders***.

Municipal Sentence - Detention sentence imposed by a municipal court for violation of municipal ordinances.

New Commitment - Commitment of youth who were not previously committed, or who were previously committed but had been discharged from DYC rolls.

Non-Mandatory Sentences - These sanctions involve no minimum out-of-home sentence length. The maximum sentence length cannot exceed 24 months. The Juvenile Parole Board determines released from commitment to parole status.

Other Residential – Placement category including Job Corps, Group Homes, Hospitalization etc.

Parole - The status of an offender conditionally released from a residential setting by discretion of the Juvenile Parole Board prior to expiration of Commitment, or upon expiration of commitment. Colorado juvenile offenders have a mandatory minimum parole length of 6 months. While on parole a youth is placed under the supervision of a parole officer and is required to observe conditions of release set by the parole officer and the Juvenile Parole Board.

Parole Length of Stay (LOS) -The average amount of time spent on parole for youth discharged from DYC during the reporting period. Parole LOS is reported in months.

Parole Revocation - The administrative action of the Juvenile Parole Board, which removes a youth from parole status in response to a violation of lawfully required conditions of parole, including the prohibition against commission of a new offense. Further parole hearings are scheduled at the discretion of the youth's client manager.

Parole Suspension - The administrative action of the Juvenile Parole Board, which removes a youth from parole status in response to a violation of lawfully required conditions of parole, including the prohibition against commission of a new offense. Reconsideration of parole must occur within 90 days on a date determined by the Juvenile Parole Board.

Parole Violation – Actions by a parolee that do not conform to the conditions of parole.

Preadjudicated - The legal status of youth pending delinquency adjudication decisions. Often these youth are referred to as pre-trial youth since they are generally admitted to detention pending some court action. This category also includes youth who are serving a sentence, such as probation, on a prior delinquency adjudication and who are in detention pending a new court action.

Prior Adjudications - Adjudications that occurred prior to the current detention or commitment event.

Prior Out-of-home Placements - Placements in Social Services or DYC residential programs or other treatment programs prior to the current commitment sentence.

Recommitment - An additional commitment sentence imposed by the court on a youth who has not yet been discharged from DYC.

Repeat Offender - see *Sentencing Special Offenders*.

Regional Management Structure - Decentralized DYC management structure comprised of four geographic regions in the state.

Residential Programs - Programs that provide 24-hour care.

Residential Length of Stay (LOS) - The average amount of time spent in all residential programs (assessment, secure, staff secure, and community programs) for youth discharged from DYC during the reporting period.

Secure Residential Facility – A facility with physical security features such as locked doors, sally-ports, and correctional fencing.

Sentencing Special Offenders (see Section 19-2-908, C.R.S.)

- a. **Mandatory Sentence Offender** – These sanctions specify a minimum time period of up to 24 months or less during which a youth must be in an out-of-home placement.
- b. **Repeat Offender (Sentence Type)** - A 'repeat' sentence type can be imposed on a juvenile who has been previously adjudicated a juvenile delinquent, and is adjudicated a juvenile delinquent for a delinquent act that constitutes a felony, or if his or her probation is revoked for a delinquent act that constitutes a felony. The court may or may not designate a minimum sentence length.
- c. **Violent Offender (Sentence Type)** - A juvenile may be sentenced as a violent offender if he or she is adjudicated a juvenile delinquent for a delinquent act that constitutes a crime of violence as defined in Section 16-11-309(2), Colorado Revised Statutes.
- d. **Aggravated Offender (Sentence Type)** – These sanctions specify a time period of three to seven years, during which time a youth must remain in the custody of the Department of Human Services. Contingent upon court approval, youth may be eligible for non-secure placement, parole, or transfer to the Department of Corrections (adult corrections).

Staff-Supervised Residential Facility – Privately operated, staff-supervised facilities provide 24-hour line of sight supervision of youth.

State Owned / Privately Operated Programs - Detention or commitment programs which are administered by contract service providers in DYC owned facilities.

State Owned / State Operated Programs - Detention or commitment programs which are administered by DYC employees in DYC owned facilities.

Total Commitment Length of Stay (LOS) - The average amount of time in DYC custody (sentence start date to discharge date including parole) for all youth discharged from DYC during the reporting period, not including escape time.

Violent Offender (Sentence Type) – see *Sentencing Special Offenders*.