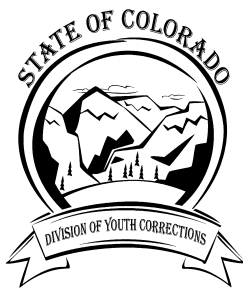


Fiscal Year 2003-2004

Management Reference Manual



Colorado Department of Human Services
Division of Youth Corrections

Working with Colorado Communities to Achieve Justice

January 2005

This manual provides the information most often requested on DYC client populations. Any questions concerning the data presented in this manual may be directed to the Research and Evaluation Unit, Division of Youth Corrections, 4255 S. Knox Court, Denver, CO 80236, or maryann.waugh@state.co.us

**Colorado Department of Human Services
Division of Youth Corrections**



January, 2005

<http://www.cdhs.state.co.us/dyc>

STATE OF COLORADO

COLORADO DEPARTMENT OF HUMAN SERVICES

DIVISION OF YOUTH CORRECTIONS

4255 South Knox Court
Denver, Colorado 80236
Phone (303) 866-7345
FAX (303) 866-7344

Stephan K. Bates
Director



Bill Owens
Governor

Marva Livingston Hammons
Executive Director

TO THE READER

The Division of Youth Corrections (DYC) is pleased to release the first annual Management Reference Manual featuring data from the new TRAILS data system. Thanks to the diligent efforts of many groups, including DYC's Information Technology staff, the TRAILS Taskforce, and DYC's Research Unit, the Division has been able to transition effectively from manually tracked data to TRAILS-generated reports and tables. The Division has drastically improved its ability to track, measure, and analyze population data.

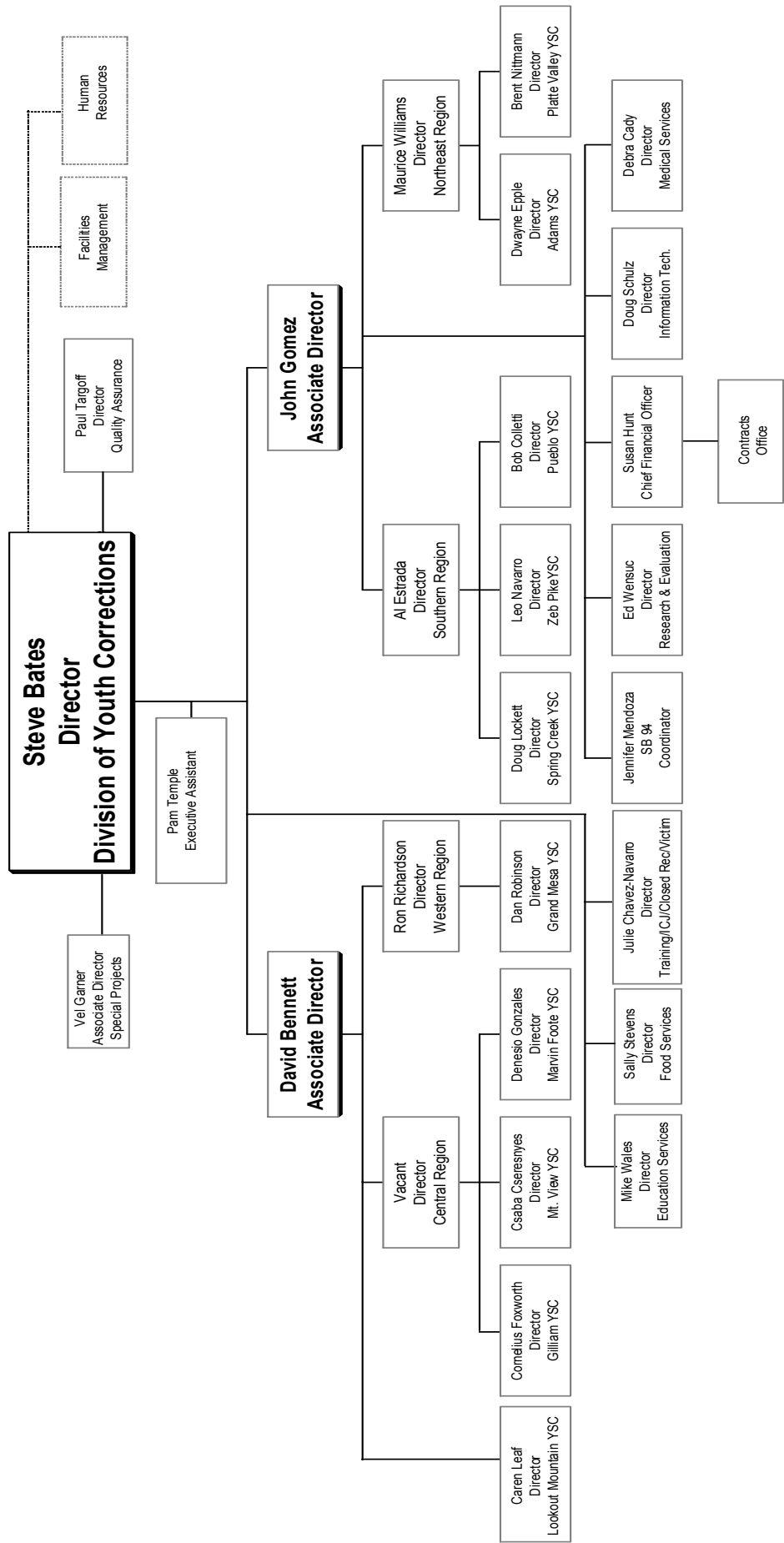
This Management Reference Manual contains population information for fiscal year 2003-04, and reflects some significant changes since the last Management Reference Manual was published (FY 2000-01). New Legislative mandates have set an upper limit to "cap" the detention population at 479, and have shortened the mandatory parole length to 6 months. The average detention and parole populations have declined in accordance with these new policies. The committed population has continued to grow at an average rate of 9%. The growth rate of the committed female population continues to increase, as does the growth rate of the population needing mental health and substance abuse treatment.

Thank you for your interest in the Division of Youth Corrections. Additional information is available on the Division's web site at <http://www.cdhs.state.co.us/dyc>.

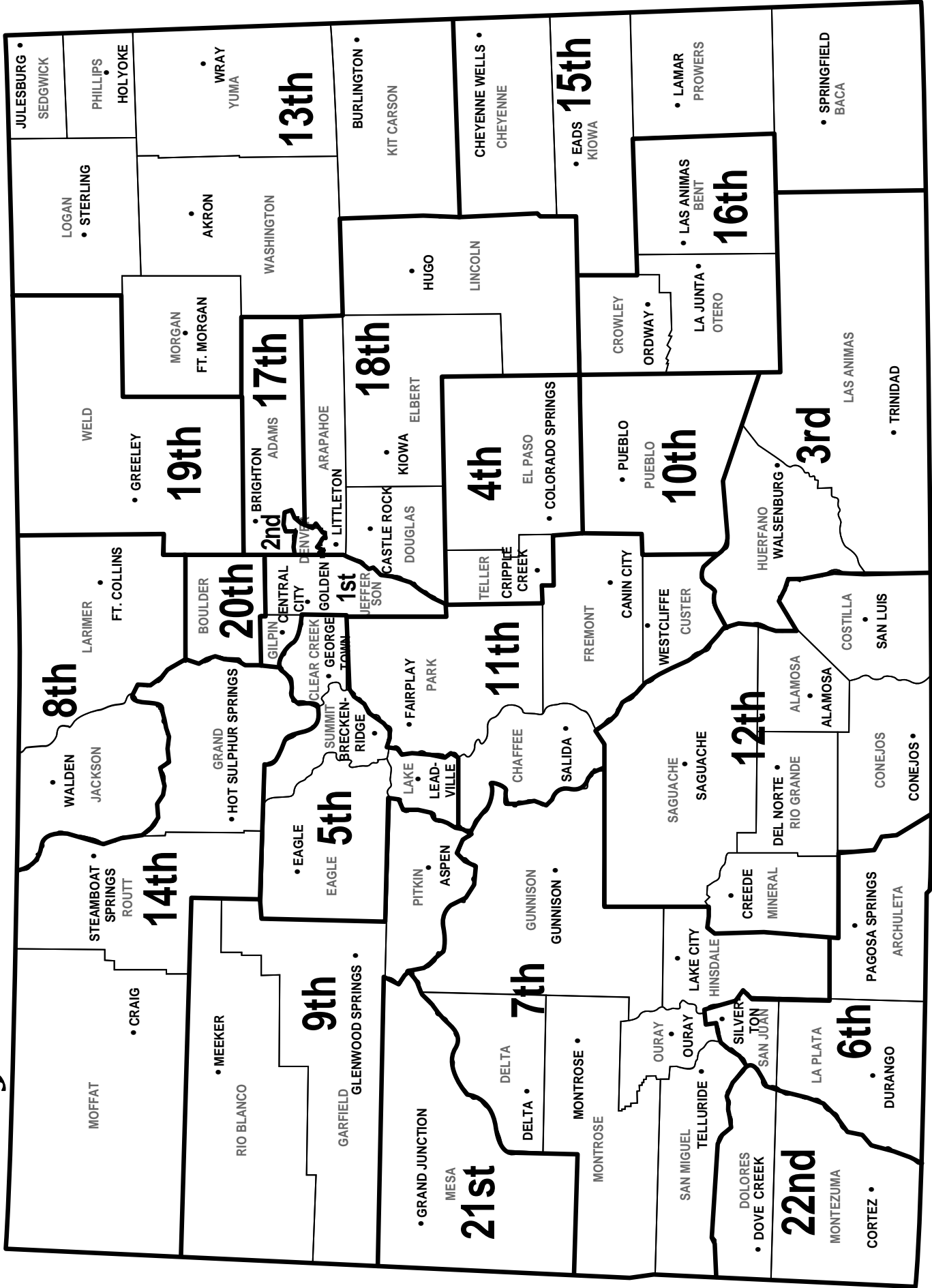
Sincerely,

Stephan K. Bates
Director, Division of Youth Corrections

Division of Youth Corrections Organizational Flowchart



Judicial Districts of Colorado



Management Reference Manual
Fiscal Year 2003-2004

Executive Summary	i
Section I: Colorado State Totals	
Filtering Process to Detention	1
Filtering Process to Commitment	2
All Clients Population Data	3
Section II: Detention Program Services	
Detained Youth Population Trends	4
Detained Youth Population by Program	6
Detained Youth Population Trends ADP by Program	7
Detained Youth Demographic Trends	8
Detained Youth Demographic Trends by Gender	10
Section III: Commitment Program Services	
Committed Youth Population Trends	11
Committed Youth Population by Program	13
Committed Youth Population Trends ADP	15
Committed Youth Demographic Trends	16
Committed Youth Demographic Trends by Gender	17
New Commitment Trends by Gender	18
Committed Youth Commitment Classification	20
Committed Youth Length of Stay Trends	21
Committed Youth Parole Trends	22
Committed Youth Discharge Trends	23
Section IV: Regional Summaries	
Committed Youth Demographic Trends	24
Committed Youth Discharge Trends	25
Glossary of Terms	Appendix

Fiscal Year 2003-04 Executive Summary

The Management Reference Manual is designed to provide population information on youth served by the Division of Youth Corrections (DYC) during FY 2003-04 and other trend data. Section I contains statewide population information, while Sections II and III provide more detailed population data that describes the detention and commitment populations respectively. Section IV contains data for each of the Division's Management Regions. A report summary is included below.

The Fiscal Year 2003-04 Management Reference Manual represents the initial year of TRAILS data output. The Division now has the ability to respond and adapt to its changing data needs, and this Manual includes examples of some updated measures. In response to the increasing concern about the mental health needs of DYC's population, the FY 03-04 Reference Manual has been expanded to include Colorado Client Assessment Record (CCAR) information by gender. The Division has used high-moderate to severe and low-moderate to none-to-slight categories to report this data. To facilitate comparison between groups, and to monitor trends over time, this manual also includes more graphs and charts than previous Reference Manuals.

During FY 2001-02 and FY 2002-03, the Division was transitioning to the new TRAILS data system, and was not able to aggregate detailed population data. This Manual includes historical data where available, but there is some missing data for the two prior fiscal years. Future Manuals will provide increasingly comprehensive historical records.

The FY 2003-04 detention population reflects some important changes in legislation. Governor Bill Owens signed Senate Bill 03-286 into law on May 1, 2003. This legislation established a 'cap' or limit of 479 on the number of State funded detention beds. This new legislation was implemented October 1, 2003. The FY 2000-01 detention average daily population (ADP) was 583.0, but from this fiscal year forward, under current state law, the detention ADP can never exceed 479. Since ADP is an average measure, and the *maximum* possible value is 479, it is likely that the ADP will remain below the legislatively mandated cap. Each of the State's 22 judicial districts has been allocated a portion of the 479 beds. Statutory language provides that districts may borrow beds within an established 'catchment' area. Statutes also mandate that districts have procedures in place for emergency release of detained youth in the event that a district is unable to borrow a bed.

Parole legislation that became effective late in FY 2002-03 has also impacted the FY 2003-04 parole ADP. Senate Bill 03-284 shortened the mandatory parole length from nine to six months, effective May 1, 2003. There was a period of time during FY 2003-04 when youth who had been sentenced under the old 9-month mandate were being released at the same time as youth who were being released from the new six-month parole sentence. This precipitous increase in parole discharges resulted in a statewide decline in parole ADP.

I. STATE TOTALS FY 2003-04

A. Juvenile Justice Filtering Process to Detention

- There were 11,148 new admissions to DYC Detention during FY 2003-04. This represents 2.1% of the 10-17 year old Colorado population, and it represents 24.3% of Colorado's juvenile arrests.
- Both new admissions and arrest rates are at a 5-year low, having decreased slightly since FY 2002-03.

B. Juvenile Justice Filtering Process to Commitment

- There were 924 new commitments to DYC during FY 2003-04. This represents 0.18% of the 10-17 year old Colorado population, and it represents 5.8% of Colorado's almost 16,000 juvenile filings.
- This commitment rate has remained fairly constant for the past 5 fiscal years, as the State's youth population and the number of new commitments have experienced similar levels of growth.
- The ratio of new commitments to filings has grown by 1% since last fiscal year, as new commitments have increased by 100, and filings have decreased by almost 1,200.

C. Clients Served¹

- There were 8,970 youth served in DYC programs during FY 2003-04, which reflects an unduplicated count of individual youth. 7,290 youth were served in detention programs, 2,300 youth were served in residential commitment programs, and 1,487 youth were served in parole services.

D. DYC Population Summary

- There was an ADP of 396.2 detained youth, which is a 10-year low.
- There was an ADP of 1,385.8 committed youth, which is a 10-year high.
- Commitment ADP has increased steadily over the past 10 years.
- There was an ADP of 535.6 paroled youth.
- There were 11,148 new admissions to detention, which is a 10-year low. FY 2003-04 also marks the largest decline (20%) since FY 1995-96, when admissions dropped by 17%.
- There were 924 new commitments, which is a 10-year high. New commitments have been increasing since FY 2000-01.

¹ Clients Served is an unduplicated count. Categorical totals are not a sum of individual program counts and are not available for all categories.

II. DETENTION POPULATION Trends and Characteristics

A. Population Trends

- As a result of the provisions of SB 03-286, detention ADP is at a 10-year low, 396.2. Detention ADP is 33% lower than it was in FY 1994-95, and 20% lower than last fiscal year.
- Detention Admissions are at a 10-year low, 11,184, and are 33% lower than they were in FY 1994-95.
- Ninety-Five Percent of detained youth were held in State-Operated facilities. This is much higher than the 80% who were held in State Operated facilities in FY 2000-01. Privately operated placements were reduced in response to the detention cap legislation.
- The detention Length of Stay (LOS) has decreased by 16% from 15.3 days in FY 2002-03 to 12.8 days in FY 2003-04. This is the lowest LOS since FY 1994-95. A decrease in LOS was anticipated because of the detention cap.

B. Population Characteristics

1. Gender

- The percent of female new admissions has increased to 23.3% since FY 2000-01, while the percent of male new admissions has correspondingly decreased to 76.7%.
- The percent of female ADP has increased by 1% since FY 2000-01.

2. Ethnicity

- Anglo-American youth (42%) have consistently represented the largest ethnic group in DYC detention facilities, followed by Hispanic / Latino youth (36%), and African-American youth (15%).

3. Age

- The average age at admission in FY 2003-04 was 16 yrs, as it was in FY 2000-01 and for several years prior.
- The age distribution for FY 2003-04 is very similar to that of FY 2000-01. 17 year olds represented the largest age group (29%), followed by 16 year olds (26%) and 15 year olds (22%).

4. Prior Admissions

- Sixty-Three percent of the youth admitted to detention in FY 2003-04 had one or more prior detention admissions. This is slightly below the 65% in FY 2000-01.

III. RESIDENTIAL COMMITMENT POPULATION Trends and Characteristics

A. Population Trends

- The commitment population experienced growth across three commitment categories. New commitments experienced the greatest rate of increase, growing by 12% since last fiscal year; Clients served increased by 6%; and ADP increased by 4%.
- Residential commitment length of stay (LOS) experienced a decline, dropping 3% to 18.9 months after growing from 15.5 to 19.5 months (26% increase) over the past three fiscal years.

B. Population Characteristics²

1. Gender

- FY 2003-04 marks the first year since FY 2000-01 that the Division has been able to calculate population data by gender. Since FY 2000-01, the percent of females has increased from 12% to 14%, and the percent of female ADP has increased from 10% to 12%.
- Female ADP has grown 23% since FY 2000-01, while the male population has grown by only 9%.
- Females have increased 47% since FY 2000-01, while males have increased by only 17%.

2. Ethnicity

- FY 2003-04 marks the first year since FY 2000-01 that the Division has been able to calculate population data by ethnicity. The majority of new commitments have historically been Anglo, Hispanic/Latino and African American youth respectively, and this holds true for FY 2003-04. This year's ethnic distribution was 48% Anglo, 31% Hispanic and 17% African American. The remaining 4% was split between Native American, Asian American and other ethnicities.

3. Age

- The average age at commitment (16.5 years) was 0.1 years greater than the FY 2000-01 average. This figure had remained stable at 16.4 from FY 1998-99 to FY 2000-01.
- Thirty-Four percent of youth were 17 years old, 30% were 16 years old, and 21% were 15 years old. These proportions have not changed significantly since FY 2000-01, and had remained unchanged for several years prior.

² Refers to youth who were newly committed during FY 2003-04, unless otherwise specified.

4. Other Characteristics

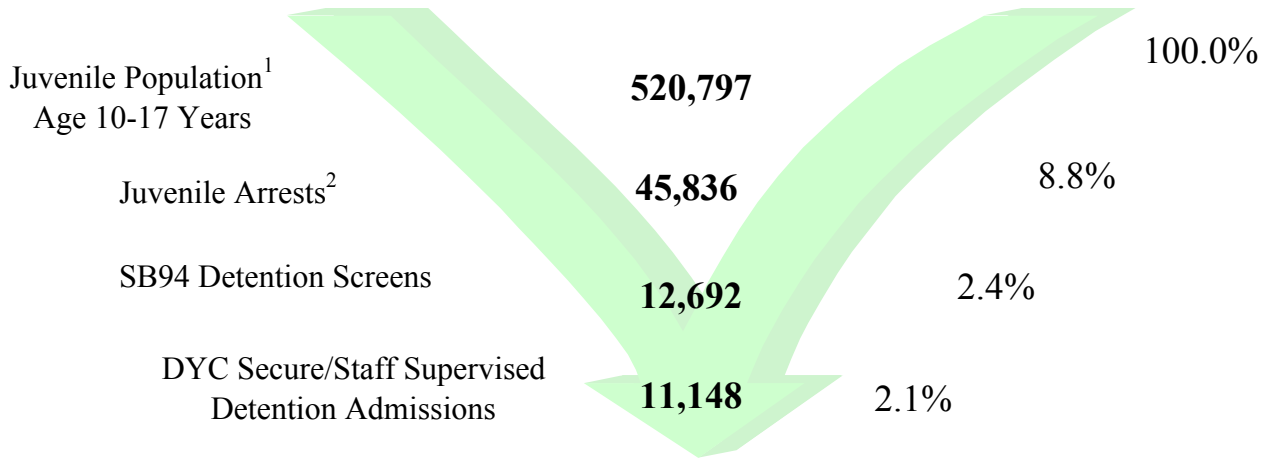
- Twenty-Five percent of newly committed youth received mandatory sentences. This is 1% less than the 26% of mandatory sentences in FY 2000-01 and FY 1999-00. The only mandatory category that has grown is repeat offenders, which has doubled from 3% in FY 2000-01 to 6% in FY 2003-04.
- The average age at first adjudication was 14.1 years, as it was during FY 1998-99 through FY 2000-01.
- Seventy-Two percent of youth had one or more out-of-home placements; this is a 9% decrease from FY 2000-01.
- The percent of males and females with one prior out-of-home placement was similar, but 31% of males had no prior out-of-home placements, while only 14% of females had no prior out-of-home placements.
- The percent of females with a history of running away increased slightly from 82% in FY 2000-01 to 86% in FY 2003-04. The percent of males with a runaway history increased more markedly, growing from 58% in FY 2000-01 to 65% in FY 2003-04.
- The percent of newly committed youth in need of treatment level substance abuse services has increased from 51% in FY 2000-01, to 54% in FY 2003-04. The female population in need of treatment has increased from 56% to 58%, and the male treatment population has increased from 51% to 53%.
- Forty percent of youth were assessed as having severe to high-moderate mental health needs.
- Seventy-Four percent of newly committed youth had one or more prior adjudications. This is slightly lower than 77% in FY 2000-01.
- Sixty-Two percent of youth were committed for felony offenses in FY 2003-04. This is slightly lower than 64% in FY 2000-01.

IV. PAROLE POPULATION Trends and Characteristics

- Parole ADP experienced its 4th year of sharp decline, to hit a 5-year low of 535.6 youth. This decline was expected as the mandatory parole length of stay was decreased from nine to six months.
- Parole LOS declined from 11.8 months in FY 2000-01 to 8.0 months in FY 2003-04. This decline was expected as the mandatory parole length of stay was decreased from nine to six months.
- Eighty-One percent of youth were discharged from parole into their homes (including foster homes, step parents, spouses, single parents, etc) during FY 2003-04. Eleven percent discharged directly into Adult Jail/ Corrections. This is slightly lower than 12% in FY 2000-01.

Fiscal Year 2003-04

Juvenile Justice Filtering Process to Detention



	FY1999-00	FY2000-01	FY2001-02	FY2002-03	FY2003-04
Age 10-17 population ¹	489,748	499,700	505,748	510,681	520,797
Juvenile Arrests ²	60,366	58,560	54,531	54,008	45,836
Arrests as % of population	12.3%	11.7%	10.8%	10.6%	8.8%
SB94 Detention Screens	14,101	13,590	<i>N/A</i>	12,105	12,692
Detention Admissions	15,212	14,921	16,310	14,059	11,148
Admissions as % of Population	3.1%	3.0%	3.2%	2.8%	2.1%

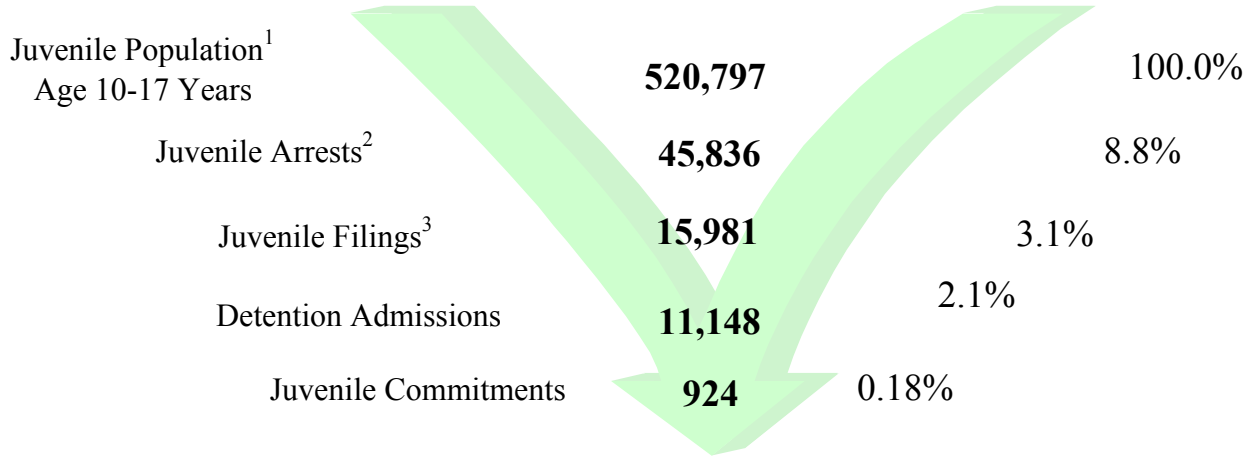
NOTE: Due to the TRAILS conversion process, some data is not available for FY 2001-02.

¹Colorado State Department of Local Affairs. Population data are reported for calendar years. Population data for 2003 are based upon the 2000 census (<http://dola.colorado.gov/demog/demog.cfm>).

²Colorado Bureau of Investigations, *Crime in Colorado 2003*.

Fiscal Year 2003-04

Juvenile Justice Filtering Process to Commitment



	FY1999-00	FY2000-01	FY2001-02	FY2002-03	FY2003-04
Age 10-17 Population ¹	489,748	499,700	505,748	510,681	520,797
Juvenile Arrests ²	60,366	58,560	54,531	54,008	45,836
Arrests as % of population	12.3%	11.7%	10.8%	10.6%	8.8%
Juvenile Delinquency Filings ³	17,769	16,986	17,675	17,179	15,981
Juvenile Detention Admissions	15,212	14,921	16,310	14,059	11,148
Number of Commitments	848	766	843	824	924
Commitments as % of Population	0.17%	0.15%	0.17%	0.16%	0.18%

¹Colorado State Department of Local Affairs. Population data are reported for calendar years. Population data for 2003 are based upon the 2000 census (<http://dola.colorado.gov/demog/demog.cfm>).

²Colorado Bureau of Investigations, *Crime in Colorado 2003*.

³Colorado Judicial Branch Annual Report Statistical Supplement 2003.

ALL CLIENTS POPULATION DATA

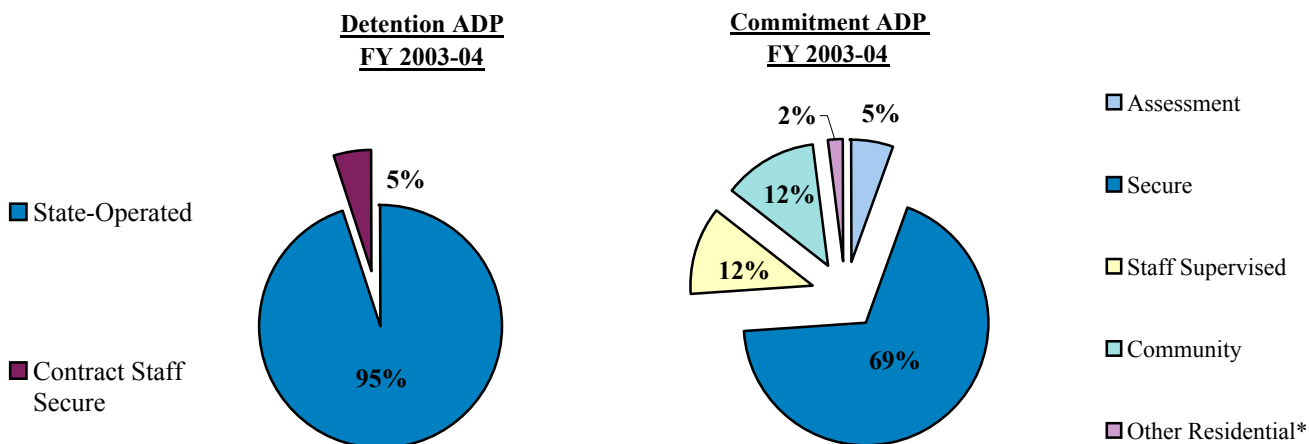
Fiscal Year 2003-04

DETAINED YOUTH	Clients Served¹	New Admits	ADP	LOS
State-Operated	7,070	10,677	376.4	12.7 days
Contract Staff Secure	414	471	19.8	15.4 days
Total Detained	7,290	11,148	396.2	12.8 days

COMMITTED YOUTH	Clients Served¹	ADP	LOS
Assessment	974	75.7	0.9 months
Secure	1,543	947.1	8.3 months
Staff Supervised	442	161.4	7.5 months
Community	679	172.9	2.9 months
Other Residential*	N/A	28.8	N/A
Total Committed Residential	2,300	1,385.8	18.9 months

PAROLED YOUTH	Clients Served¹	New Admits	ADP	LOS
Total Paroled	1,487	761	535.6	8.0 months

STATEWIDE TOTAL	Clients Served¹	ADP	LOS
STATEWIDE TOTAL	8,970	2,317.7	26.9 months



*Other Residential includes Group Homes, Job Corps, Hospitalizations etc.

NOTE: Throughout the Reference Manual, category sums may vary slightly from given totals due to rounding differences.

¹Clients Served is an unduplicated count. Categorical totals are not a sum of individual program counts and are not available for all categories.

DETAINED YOUTH POPULATION TRENDS

10 Year Detention Trends

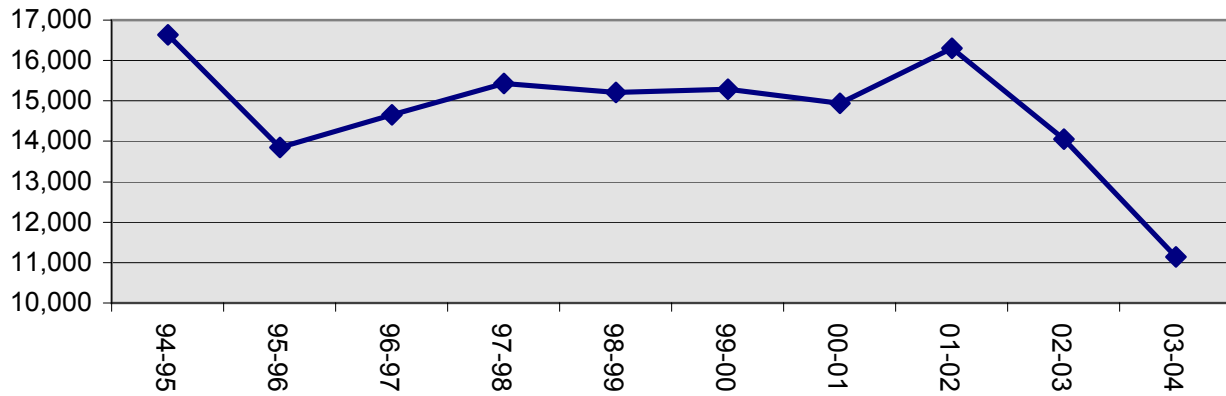
Fiscal Year	Clients Served¹	Percentage Change +/-	New Admits	Percentage Change +/-	ADP²	Percentage Change +/-	LOS (Days)	Percentage Change +/-
1994-95	8,807	12.9%	16,638	2.7%	589.0	25.9%	13.2	26.9%
1995-96	7,870	-10.6%	13,852	-16.7%	541.5	-8.1%	13.7	3.8%
1996-97	8,303	5.5%	14,652	5.8%	522.5	-3.5%	13.0	-5.1%
1997-98	8,785	5.8%	15,428	5.3%	591.8	13.3%	13.9	6.9%
1998-99	8,924	1.6%	15,212	-1.4%	602.4	1.8%	14.6	5.0%
1999-00	8,799	-1.4%	15,294	0.5%	589.1	-2.2%	14.3	-2.1%
2000-01	8,899	1.1%	14,921	-2.4%	583.0	-1.0%	14.5	1.4%
2001-02	8,916	0.2%	16,310	9.3%	545.0	-6.5%	15.7	8.3%
2002-03	8,242	-7.6%	14,059	-13.8%	497.1	-8.8%	15.3	-2.5%
2003-04	7,290	-11.6%	11,148	-20.7%	396.2	-20.3%	12.8	-16.3%

The Detention population reflects some important changes in legislature. Governor Bill Owens signed Senate Bill 03-286 into law on May 1, 2003. This legislation established a 'cap' or limit of 479 on the number of State funded detention beds. Ninety-Five percent of detained youth were held in State-Operated facilities. This is much higher than the 80% who were held in State Operated facilities in FY 2000-01. Privately operated placements were reduced in response to the detention cap legislation. The detention LOS has decreased by 16% from 15.3 days in FY 2002-03 to 12.8 days in FY 2003-04. This is the lowest LOS since FY 1994-95. A decrease in LOS is expected because of a detention cap limitation.

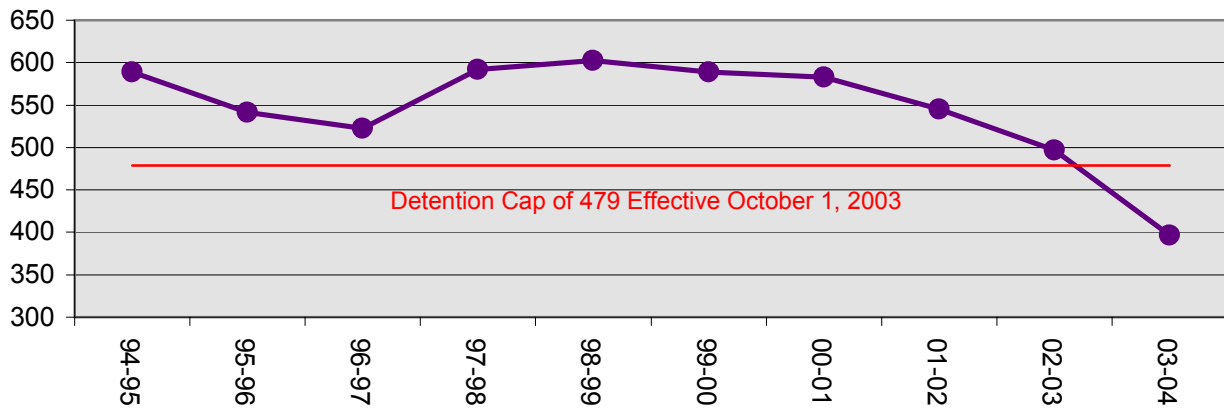
DETAINED YOUTH POPULATION TRENDS

FY 1994-95 Through FY 2003-04

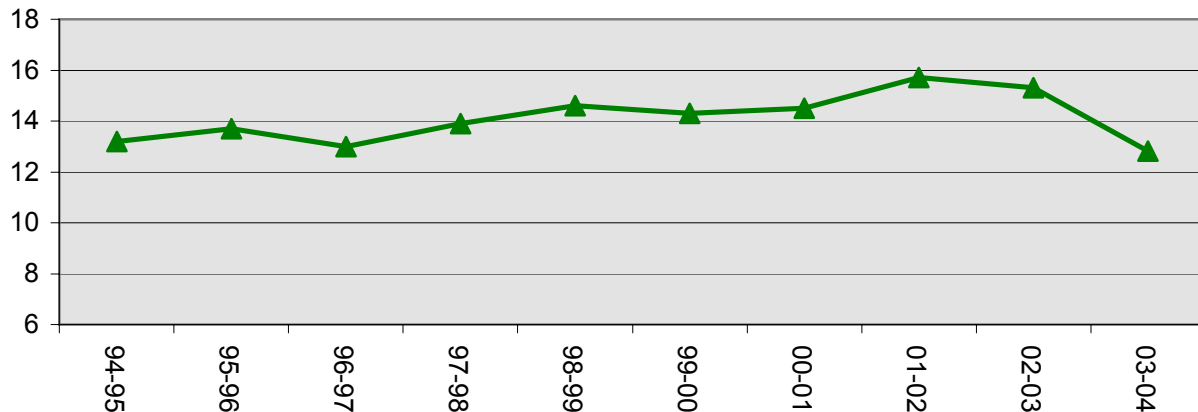
Trends in Detention Admissions



Trends in Detention ADP



Trends in Detention LOS (Days)



DETAINED YOUTH
POPULATION BY PROGRAM

FY 2003-04

	Clients Served ¹	New Admits	ADP	LOS (Days)
<i>State Operated</i>				
Adams YSC	566	684	23.6	13.1
Gilliam YSC	1417	1,800	62.6	13.0
Grand Mesa YSC	425	541	21.6	13.0
Marvin W. Foote YSC	1431	1,918	74.6	13.9
Mount View YSC	926	1,093	47.8	15.7
Platte Valley YSC	1265	1,883	62.2	11.9
Pueblo YSC	626	825	27.7	12.3
Spring Creek YSC	1325	1,933	56.2	10.4
<i>Subtotal State Operated</i>	<i>7,070</i>	<i>10,677</i>	<i>376.4</i>	<i>12.8</i>
<i>Contract Staff Secure</i>				
Brown Center	23	23	1.3	20.4
Colorado West	17	17	1.4	30.2
Dahlia Street	46	35	0.7	6.8
Emily Griffith	6	7	0.4	23.8
Hilltop Youth Services	26	27	1.9	26.4
Midway Remmington	122	136	4.6	11.6
Prowers	10	12	0.6	16.9
Robert DeNier	124	157	7.4	18.3
Youthtrack Alamosa	42	57	1.5	9.4
<i>Subtotal Contract Staff Secure</i>	<i>414</i>	<i>471</i>	<i>19.8</i>	<i>15.4</i>
STATEWIDE TOTAL	7,290	11,148	396.2	12.8

¹ Clients Served is an unduplicated count. Categorical totals are not a sum of individual program Clients Served.

DETAINED YOUTH POPULATION TRENDS

ADP BY PROGRAM

	FY 2000-01	FY 2001-02	FY 2002-03	FY 2003-04
<i>State Operated</i>				
Adams YSC	33.6	31.3	29.2	23.6
Gilliam YSC	68.5	71.7	73.7	62.6
Grand Mesa YSC	28.7	31.5	27.4	21.6
Marvin Foote YSC	77.7	79.4	68.5	74.6
Mount View YSC	63.1	54.8	49.6	47.8
Platte Valley YSC	66.0	74.2	70.4	62.2
Pueblo YSC	44.0	42.1	41.6	27.7
Spring Creek YSC	83.2	81.5	67.7	56.2
<i>Subtotal State Operated</i>	<i>464.6</i>	<i>466.5</i>	<i>428.2</i>	<i>376.4</i>
<i>Privately Operated</i>				
<i>Staff Secure</i>				
Brown Center	0.0	0.0	0.0	1.3
Colorado West	3.0	2.4	1.4	1.4
Dahlia Street	20.6	27.0	24.5	0.7
Emily Griffith	0.0	0.0	0.0	0.4
Gateway (Central)	0.0	0.0	0.0	0.0
Gateway (Southern)	1.2	1.6	1.2	0.0
Hilltop Youth Services ¹	3.2	6.5	2.7	1.9
LaPlata Youth Services	0.0	0.0	0.0	0.0
Midway Shelter	8.7	8.6	7.0	0.2
Midway Remmington	0.0	0.0	0.0	4.4
Moffat County	0.1	0.0	0.0	0.0
Prowers	0.0	0.0	0.8	0.6
Robert DeNier	10.7	13.2	12.0	7.4
Shiloh	0.0	0.0	0.5	0.0
Trailhead	0.0	0.3	1.2	0.0
Youthtrack Alamosa	6.9	6.1	4.2	1.5
Youthtrack Fillmore	5.7	6.7	6.5	0.0
Other	4.9	0.0	0.0	0.0
<i>Subtotal Staff Secure</i>	<i>65.0</i>	<i>72.4</i>	<i>61.8</i>	<i>19.8</i>
Community Accountability ² & Boot Camp	53.4	6.1	7.1	0.0
<i>Subtotal Privately Operated</i>	<i>118.4</i>	<i>78.5</i>	<i>68.9</i>	<i>19.8</i>
STATEWIDE DETENTION	583.0	545.0	497.1	396.2

¹Includes Brown Center, Operated by Hilltop Youth Services, during FY 2001-02 and FY 2002-03.

²Prior to FY 2001-02, the Division operated the Juvenile Regimented Training Program (Boot Camp) as an additional sentencing option. This program closed during FY 2000-01. The Community Accountability Program (CAP) began serving youth in April, 2002. Funding for CAP was eliminated in the FY 2002-03 Supplemental Reduction.

DETAINED YOUTH
DEMOGRAPHIC TRENDS

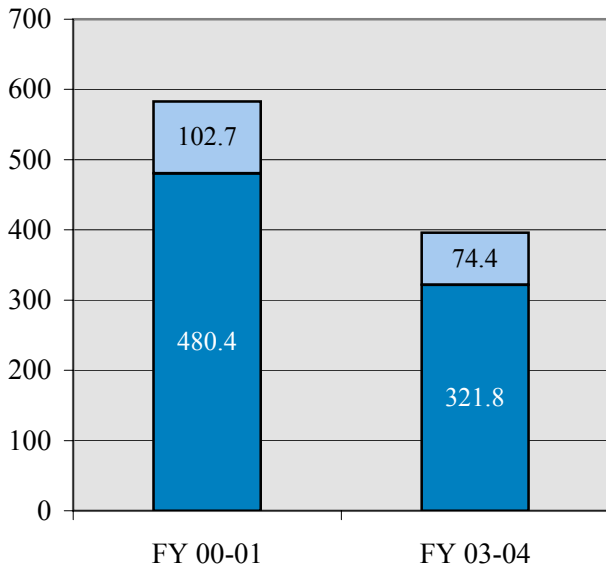
	FY 2000-01				FY 2003-04			
	New Admits	%	ADP	LOS ¹	New Admits	%	ADP	LOS ¹
GENDER								
Male	11,589	77.7%	480.4	15.3	8,552	76.7%	321.8	13.5
Female	3,332	22.3%	102.7	11.7	2,596	23.3%	74.4	10.5
TOTAL	14,921	100%	583.0	14.5	11,148	100%	396.2	12.8
ETHNICITY								
Anglo-American	6,490	43.5%	276.4	15.8	4,703	42.2%	167.2	12.6
African-American	2,292	15.3%	83.0	13.4	1,618	14.5%	61.8	14.1
Hispanic/Latino	5,699	38.2%	206.4	13.5	3,996	35.8%	143.3	13.0
Native American	134	0.9%	7.0	15.0	133	1.2%	5.4	15.2
Asian-American	133	0.9%	4.0	10.9	97	0.9%	3.0	10.7
Other	173	1.2%	6.2	13.3	601	5.4%	15.5	11.9
AGE								
10 Years	25	0.2%	0.6	9.3	15	0.1%	0.2	4.4
11 Years	63	0.4%	1.5	8.8	76	0.7%	1.7	7.5
12 Years	325	2.2%	11.3	12.2	289	2.6%	7.1	8.2
13 Years	999	6.7%	37.0	13.4	731	6.6%	25.3	12.1
14 Years	1,970	13.2%	79.8	14.8	1,522	13.7%	54.2	12.7
15 Years	3,301	22.1%	132.2	14.9	2,448	22.0%	90.4	13.3
16 Years	3,788	25.4%	151.9	14.9	2,861	25.7%	105.3	13.4
17 Years	4,277	28.6%	161.1	14.1	3,177	28.5%	111.5	12.8
18 Years	130	0.9%	5.5	16.9	17	0.2%	0.3	6.8
19 Years and Older	34	0.2%	1.5	17.8	4	0.0%	0.1	0.8
Data Not Available	0	0.0%	0.0	0.0	8	0.1%	0.2	N/A
Average Age at Admission			16.0 Years			16.0 Years		
Prior Admissions								
None	5,242	35.1%	N/A	N/A	4,093	36.7%	99.0	8.6
One	2,834	19.0%	N/A	N/A	2,357	21.1%	84.9	13.0
Two or more	6,845	45.8%	N/A	N/A	4,698	42.1%	212.3	16.4
Program Type								
State Operated	11,974	80.2%	464.6	14.4	10,677	95.8%	376.4	12.7
Privately Operated	2,947	19.7%	118.4	15.0	471	4.2%	19.8	15.4

NOTE: Due to the TRAILS conversion process, data is not available for FY 2001-02 and FY 2002-03.

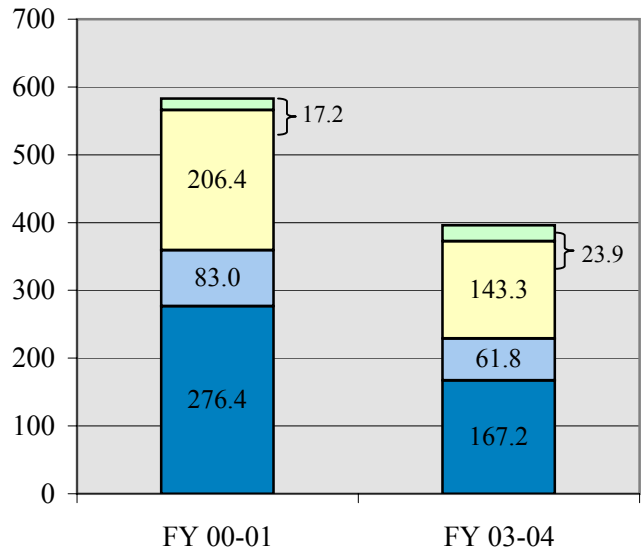
¹Detained LOS expressed in days.

DETAINED YOUTH DEMOGRAPHIC TRENDS

Detention ADP By Gender



Detention ADP by Ethnicity

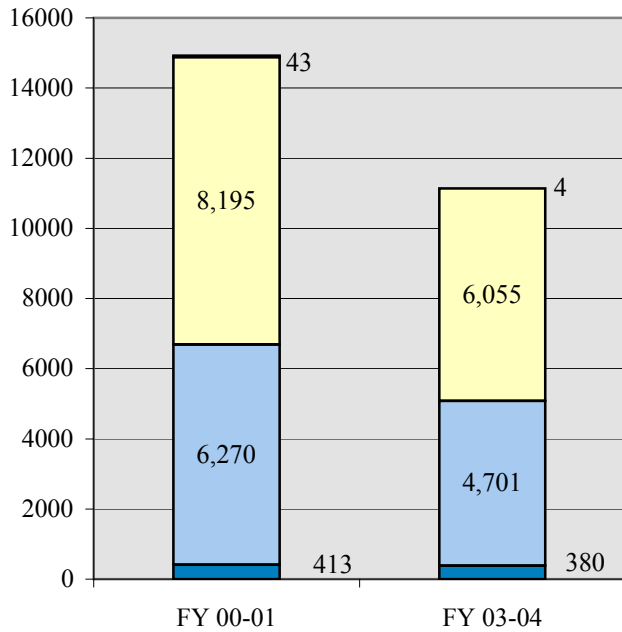


■ Male ■ Female

■ Anglo ■ African-American
 ■ Hispanic/Latino ■ Other*

**Other includes Native American, Asian American etc.*

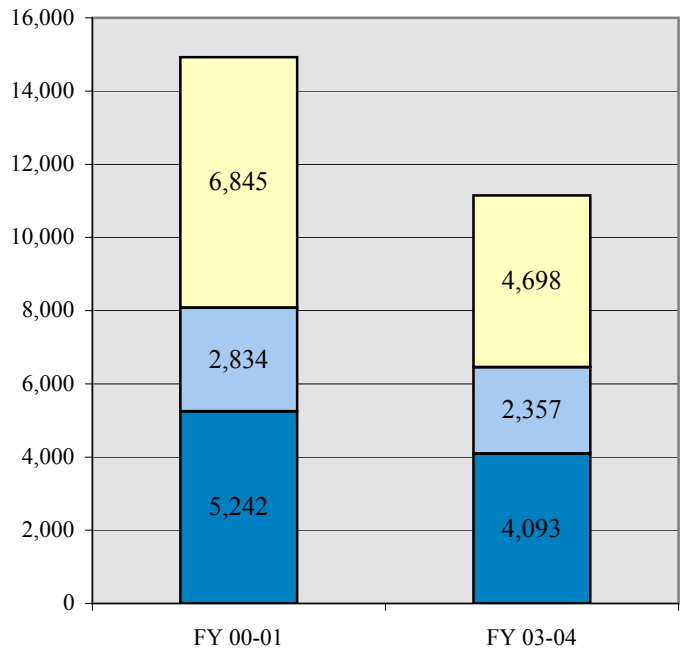
Detention Admissions by Age at Admissions



■ 10-12 Years ■ 13-15 Years
 ■ 16-18 Years ■ 19-21 Years

FY 2003-04 Data Not Available N=8

Detention Admissions by Prior Adjudications

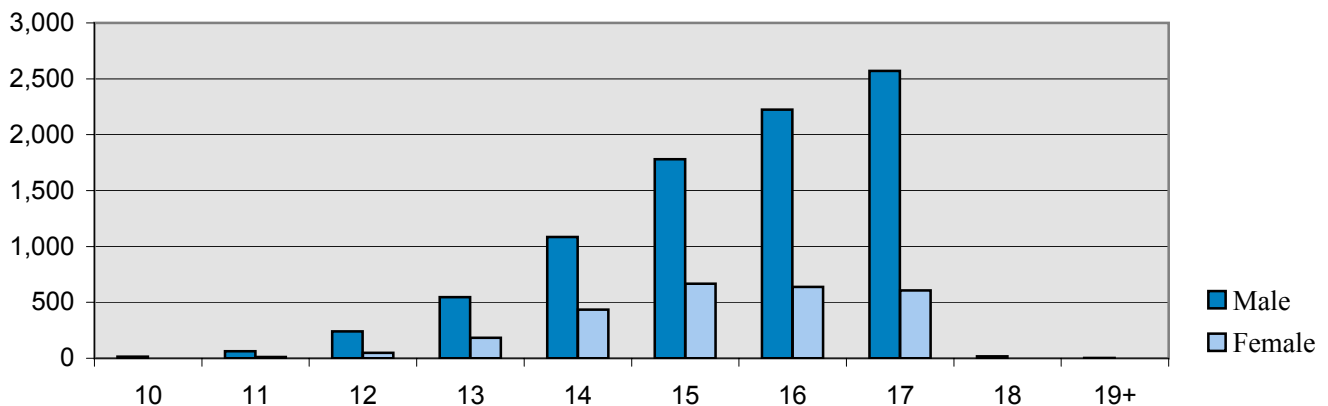


■ None ■ One ■ Two or more

DETAINED YOUTH
DEMOGRAPHIC TRENDS BY GENDER

	MALES				FEMALES			
	FY 2000-01		FY 2003-04		FY 2000-01		FY 2003-04	
	N	%	N	%	N	%	N	%
DEMOGRAPHIC DATA								
Ethnicity								
Anglo-American	4,939	42.6%	3,569	41.7%	1,551	46.5%	1,134	43.7%
African-American	1,789	15.4%	1,271	14.9%	503	15.1%	347	13.4%
Hispanic/Latino	4,530	39.1%	3,132	36.6%	1,169	35.1%	864	33.3%
Native American	92	0.8%	89	1.0%	42	1.3%	44	1.7%
Asian-American	120	1.0%	71	0.8%	13	0.4%	26	1.0%
Other	119	1.0%	420	4.9%	54	1.6%	181	7.0%
TOTAL NEW ADMISSIONS	11,589	100%	8,552	100%	3,332	100%	2,596	100%
Age at Admission								
10 Years	21	0.2%	14	0.2%	4	0.1%	1	0.0%
11 Years	56	0.5%	64	0.7%	7	0.2%	11	0.4%
12 Years	252	2.2%	240	2.8%	73	2.2%	49	1.9%
13 Years	755	6.5%	548	6.4%	244	7.3%	183	7.0%
14 Years	1,399	12.1%	1,086	12.7%	571	17.1%	436	16.8%
15 Years	2,425	20.9%	1,781	20.8%	876	26.3%	667	25.7%
16 Years	3,021	26.0%	2,223	26.0%	767	23.0%	638	24.6%
17 Years	3,511	30.3%	2,571	30.1%	766	23.0%	606	23.3%
18 Years	115	1.0%	16	0.2%	15	0.4%	1	0.0%
19 Years and Older	34	0.3%	3	0.0%	9	0.3%	1	0.0%
Data Not Available	0	0.0%	6	0.1%	0	0.0%	3	0.1%
Average Age at Admission	16.1 Years		16.0 Years		15.8 Years		15.8 Years	
Prior Admissions								
None	3,970	34.2%	3,058	35.8%	1,272	38.1%	1,035	39.9%
One	2,196	18.9%	1,832	21.4%	638	19.1%	525	20.2%
Two or more	5,423	46.8%	3,662	42.8%	1,422	42.6%	1,036	39.9%

FY 2003-04 Age at Admission



NOTE: Due to the TRAILS conversion process, data is not available for FY 2001-02 and FY 2002-03.

¹Data based on new admissions.

COMMITTED YOUTH POPULATION TRENDS

Ten Year Commitment Trends

Fiscal Year	Clients Served¹	Percentage Change +/-	New Commits	Percentage Change +/-	Residential ADP²	Percentage Change +/-	LOS (Months)	Percentage Change +/-
1994-95	1,638	1.0%	606	9.8%	633.9	3.5%	13.8	6.2%
1995-96	1,769	8.0%	693	14.4%	762.9	20.4%	13.7	-0.7%
1996-97	1,891	6.9%	762	10.0%	929.3	21.8%	14.5	5.8%
1997-98	2,046	8.2%	781	2.5%	973.5	4.8%	15.1	4.1%
1998-99	2,269	10.9%	878	12.4%	1,112.2	14.2%	15.6	3.3%
1999-00	2,544	12.1%	848	-3.4%	1,198.3	7.7%	15.5	-0.6%
2000-01	2,702	6.2%	766	-9.7%	1,251.8	4.5%	16.3	5.2%
2001-02	2,747	1.7%	843	10.1%	1,266.8	1.2%	17.7	8.6%
2002-03	2,689	-2.1%	824	-2.3%	1,327.8	4.8%	19.5	10.2%
2003-04	2,840	5.6%	924	12.1%	1,385.8	4.4%	18.9	-3.3%

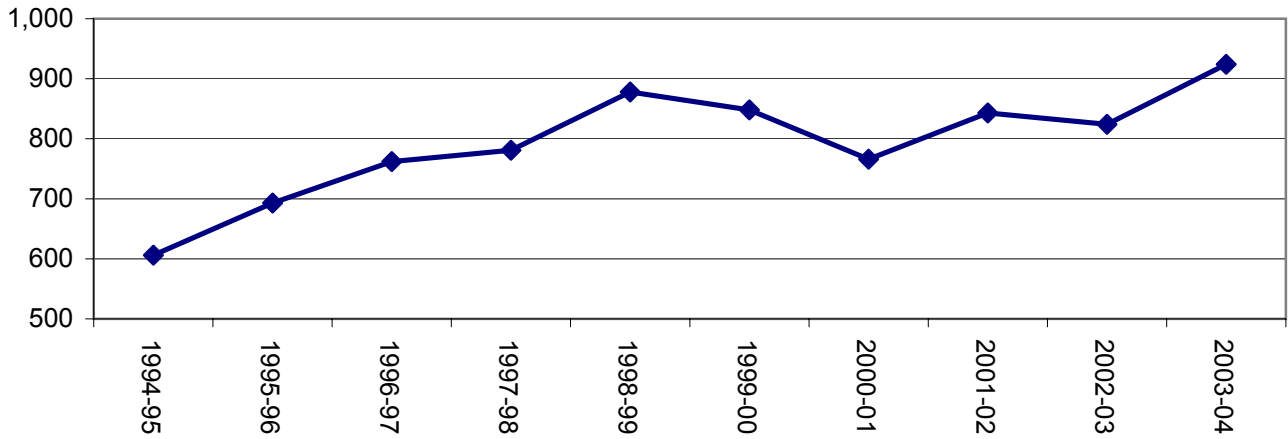
During FY 2003-04, the commitment population experienced a year of growth across three commitment categories. New commitments experienced the greatest rate of increase, growing by 12% since last fiscal year, Clients served increased by 6%, and ADP increased by 4%. Residential committed length of stay (LOS), however, experienced a decline, dropping 3% to 18.9 months after growing from 15.5 to 19.5 months (26% increase) over the past three fiscal years.

¹Clients Served is an unduplicated count.

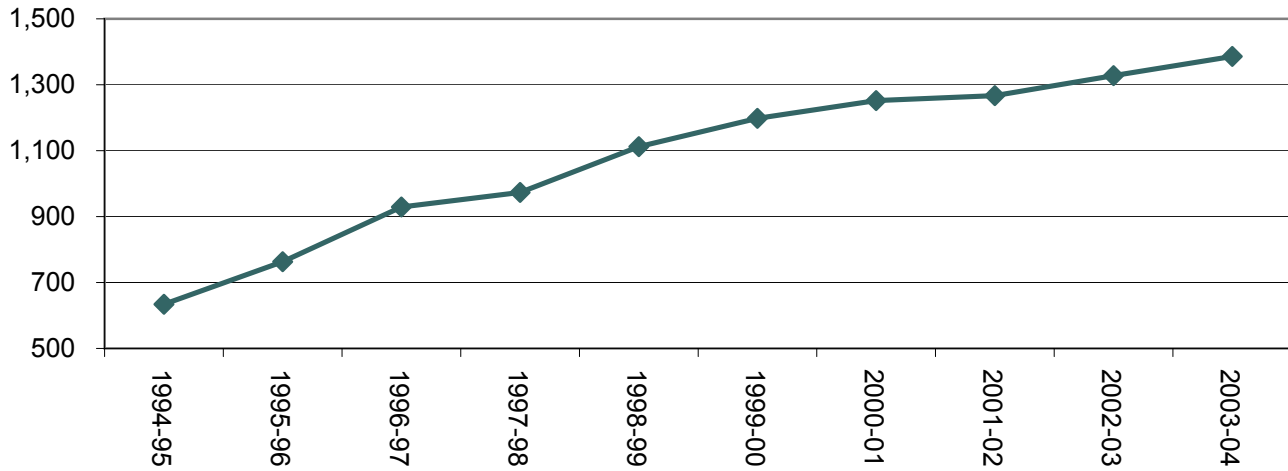
²Residential ADP includes secure, staff-supervised, and community based residential treatment programs.

COMMITTED YOUTH POPULATION TRENDS

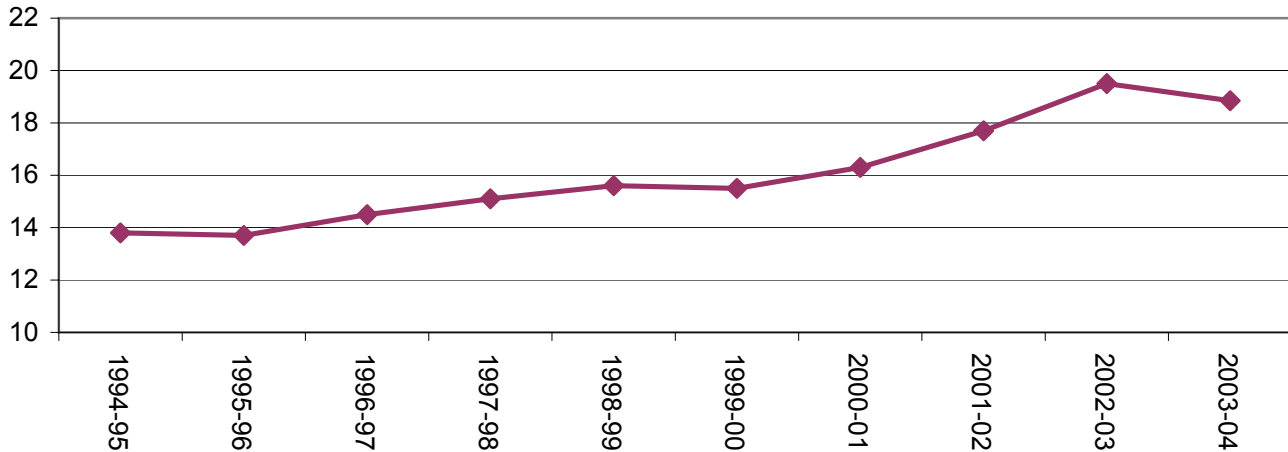
Trends in New Commitments



Trends in Residential ADP



Residential LOS



COMMITTED YOUTH
POPULATION BY PROGRAM

FY 2003-04

	Clients Served ¹	ADP
Assessment		
Grand Mesa YSC	116	7.2
Marvin W. Foote YSC	88	3.8
Mount View YSC	384	27.9
Platte Valley YSC	202	18.2
Robert Denier YSC	27	1.6
Spring Creek YSC	233	16.8
Zeb Pike YSC	3	0.2
Total Assessment	974	75.7
Secure		
<i>State Operated</i>		
Grand Mesa YSC	189	49.8
Lookout Mountain YSC	397	232.5
Marvin W. Foote YSC	261	32.8
Mount View YSC	489	40.7
Platte Valley YSC	310	58.8
Spring Creek YSC	204	25.0
Zeb Pike YSC	87	45.2
<i>Subtotal State Operated</i>	<i>1,543</i>	<i>484.8</i>
<i>Privately Operated</i>		
Corner Stone Girls View	71	36.7
Lathrop	32	5.2
Robert Denier YSC	37	15.3
Ridgeview YSC	724	405.1
<i>Subtotal Privately Operated</i>	<i>823</i>	<i>462.3</i>
Total Secure	1,581	947.1
Staff-Supervised (Contract)		
Cedar Springs	26	12.2
Colorado West	42	9.2
Devereux Cleo Wallace	32	14.3
El Pueblo	37	14.1
Fort Logan Mountain Star	13	4.5
Glen Mills Schools	3	1.1
Hilltop/ Miranda	45	11.1
Jefferson Hall	1	0.0
Jefferson Hills Aroura	95	42.7
Jefferson Hills Lakewood	84	32.3
Kidz Ark	8	2.1
Midway	47	9.8
Rite of Passage	20	8.0
Total Staff-Supervised (Contract)	442	161.4

¹Clients Served is an unduplicated count. Categorical totals are not a sum of individual program counts and are not available for all categories.

**COMMITTED YOUTH POPULATION
BY PROGRAM**

FY 2003-04

	Clients Served ¹	ADP
Community (Contract)		
Attention Homes The Bridge	1	0.0
Alternative Youth Adventures	214	27.9
Beaucaire	6	0.8
Boulder Community	1	0.2
COMCOR	15	2.5
ComCor and Work Release	13	3.1
Dale House	40	9.8
Daybreak-Princeton	28	7.0
DAYS	35	8.8
Emily Griffith Center	26	10.7
Hilltop	9	1.2
Kearney St. Foster Family	1	0.1
Lost and Found	35	10.4
Lyle Alzado Youth Home	30	8.4
Maple Star	1	0.1
Orchard House	1	0.0
Polaris House	2	0.3
Private Foster Homes	1	0.1
Restitution Center	2	0.1
Synergy	10	2.9
Third Way Center	36	16.5
Turning Point	56	17.3
The Bridge	1	0.0
Youthtrack Excel	58	12.5
Youthtrack Jeffco	25	7.4
Youthtrack PACE	1	0.1
Youthtrack Pal	14	1.6
Youthtrack San Louis Valley	12	4.3
Youthtrack Work and Learn	102	14.2
Youth Ventures	29	4.9
Total Community (Contract)	679	172.9
Other Residential	<i>N/A</i>	28.8

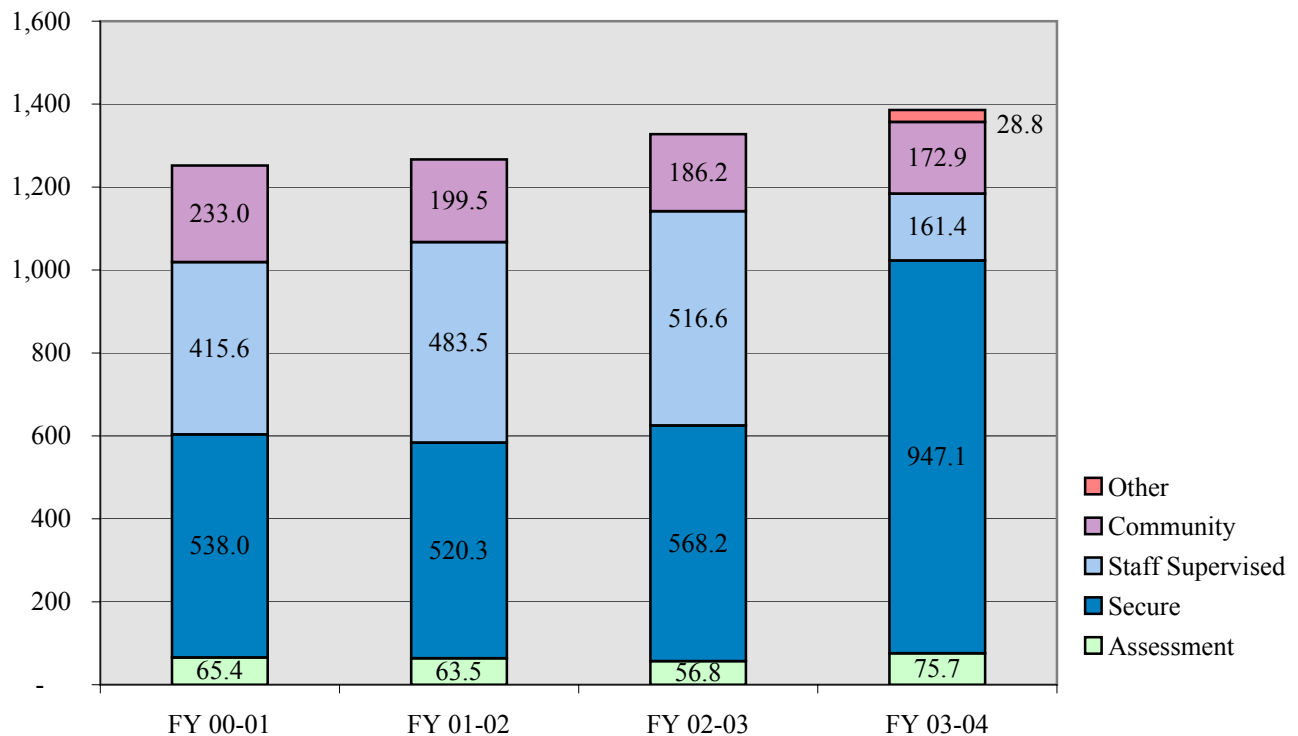
STATEWIDE COMMITMENT	2,840	1,385.8
-----------------------------	--------------	----------------

¹Clients Served is an unduplicated count. Categorical totals are not a sum of individual program counts and are not available for all categories.

COMMITTED YOUTH POPULATION TRENDS
AVERAGE DAILY POPULATION

	FY 2000-01	FY 2001-02	FY 2002-03	FY 2003-04
Assessment	65.4	63.5	56.8	75.7
Secure	538.0	520.3	568.2	947.1
Staff Supervised	415.6	483.5	516.6	161.4
Community	233.0	199.5	186.2	172.9
Other Residential	0.0	0.0	0.0	28.8
Total Residential ADP	1,251.8	1,266.8	1,327.8	1,385.8

Residential ADP



COMMITTED YOUTH
DEMOGRAPHIC TRENDS

	FY 2000-01			FY 2003-04		
	New Commits	%	ADP	New Commits	%	ADP
GENDER						
Male	677	88.4%	1,121.7	793	85.8%	1,225.4
Female	89	11.6%	130.1	131	14.2%	160.4
TOTAL	766	100%	1,251.8	924	100%	1,385.8
ETHNICITY						
Anglo-American	394	51.4%	593.0	443	47.9%	629.4
African-American	86	11.2%	167.4	157	17.0%	242.8
Hispanic/Latino	269	35.1%	453.0	284	30.7%	455.1
Native American	6	0.8%	12.6	14	1.5%	23.7
Asian-American	4	0.5%	6.0	10	1.1%	13.4
Other	7	0.9%	19.7	16	1.7%	21.3
AGE¹						
11 Years	0.0	0.0%	0.0	1	0.1%	0.6
12 Years	5	0.7%	0.2	7	0.8%	13.4
13 Years	28	3.7%	5.2	17	1.8%	44.8
14 Years	78	10.2%	32.0	82	8.9%	160.0
15 Years	149	19.5%	108.0	189	20.5%	323.8
16 Years	203	26.5%	207.9	274	29.7%	414.0
17 Years	268	35.0%	325.0	318	34.4%	379.2
18 Years	32	4.2%	352.6	34	3.7%	42.7
19 Years	3	0.4%	167.9	2	0.2%	7.3
20 Years	0	0.0%	47.8	0	0.0%	0
21 Years	0	0.0%	5.1	0	0.0%	0
Average Age at Commitment:	16.4 Years			16.5 Years		
Rate of New Commitments per 10,000 Juvenile Population	15.3			17.7		

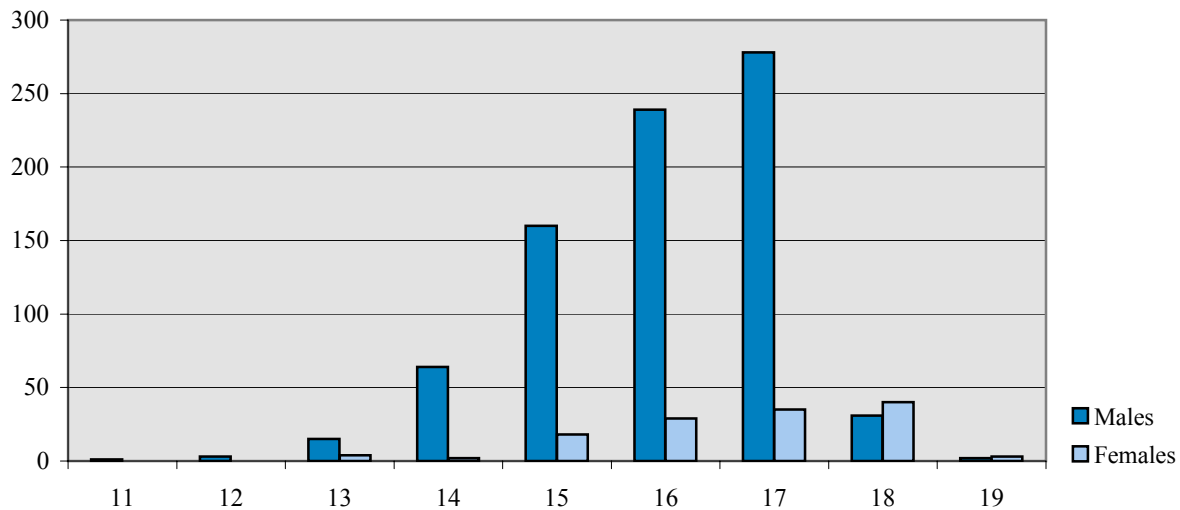
NOTE: Due to the TRAILS conversion process, data is not available for FY 2001-02 and FY 2002-03.

¹New Commitment counts for each age category correspond to age at commitment. ADP figures for each age category, however, are based on the you age on the last day of the fiscal year.

COMMITTED YOUTH
DEMOGRAPHIC TRENDS BY GENDER

	MALES				FEMALES			
	FY 2000-01		FY 2003-04		FY 2000-01		FY 2003-04	
	N	%	N	%	N	%	N	%
DEMOGRAPHIC DATA¹								
Ethnicity								
Anglo:	339	50.1%	375	47.3%	55	61.8%	68	51.9%
African-American:	79	11.7%	134	16.9%	7	7.9%	23	17.6%
Hispanic/Latino:	244	36.0%	247	31.1%	25	28.1%	37	28.2%
Native American:	5	0.7%	13	1.6%	1	1.1%	1	0.8%
Asian-American:	4	0.6%	9	1.1%	0	0.0%	1	0.8%
Other:	6	0.9%	15	1.9%	1	1.1%	1	0.8%
TOTAL NEW COMMITMENTS	677	100%	793	100%	89	100%	131	100%
Age								
11 Years	0	0.0%	1	0.1%	0	0.0%	0	0.0%
12 Years	5	0.7%	3	0.4%	0	0.0%	0	0.0%
13 Years	25	3.7%	15	1.9%	3	3.4%	4	3.1%
14 Years	64	9.5%	64	8.1%	14	15.7%	2	1.5%
15 Years	128	18.9%	160	20.2%	21	23.6%	18	13.7%
16 Years	181	26.7%	239	30.1%	22	24.7%	29	22.1%
17 Years	241	35.6%	278	35.1%	27	30.3%	35	26.7%
18 Years	30	4.4%	31	3.9%	2	2.2%	40	30.5%
19 Years	3	0.4%	2	0.3%	0	0.0%	3	2.3%
Average Age at Commitment	16.5 Yrs		16.4 Yrs		16.2 Yrs.		16.1 Yrs	

FY 2003-04 Age at Commitment



NOTE: Due to the TRAILS conversion process, data is not available for FY 2001-02 and FY 2002-03.

¹Data based on new commitments.

NEW COMMITMENT TRENDS
BY GENDER

	MALES				FEMALES			
	FY 2000-01		FY 2003-04		FY 2000-01		FY 2003-04	
	N	%	N	%	N	%	N	%
NEW COMMITMENT PROFILE								
Prior Adjudications								
None	147	21.7%	191	24.1%	33	37.1%	48	36.6%
One	167	24.7%	227	28.6%	24	27.0%	46	35.1%
Two or more	363	53.6%	370	46.7%	32	36.0%	36	27.5%
Data Not Available	0	0.0%	5	0.6%	0	0.0%	1	0.8%
TOTAL NEW COMMITMENTS	677	100%	793	100%	89	100%	131	100%
Prior Out-of-Home Placements								
None	131	19.4%	245	30.9%	12	13.5%	18	13.7%
One	167	24.7%	185	23.3%	7	7.9%	30	22.9%
Two or more	379	56.0%	363	45.8%	70	78.7%	83	63.4%
Runaway History¹								
No runaway history	283	41.8%	263	33.2%	16	18.0%	17	13.0%
Runaway history	391	57.8%	519	65.4%	73	82.0%	113	86.3%
Data Not Available	3	0.4%	11	1.4%	0	0.0%	1	0.8%
Assessed Substance Abuse Counseling Needs²								
Prevention	112	16.5%	117	14.8%	13	14.6%	14	10.7%
Intervention	215	31.8%	251	31.7%	25	28.1%	40	30.5%
Treatment	344	50.8%	420	53.0%	50	56.2%	76	58.0%
Data Not Available	6	0.9%	5	0.6%	1	1.1%	1	0.8%
Assessed Mental Health Needs³								
High-Moderate to Severe	<i>N/A</i>	<i>N/A</i>	219	39.5%	<i>N/A</i>	<i>N/A</i>	41	40.2%
Low Moderate/None to Slight	<i>N/A</i>	<i>N/A</i>	336	60.5%	<i>N/A</i>	<i>N/A</i>	61	59.8%
Data Not Available	<i>N/A</i>	<i>N/A</i>	238	<i>N/A</i>	<i>N/A</i>	<i>N/A</i>	29	<i>N/A</i>
Average Age at First Adjudication:	14.1		14.1		14.1		14.2	

NOTE: Due to the TRAILS conversion process, data is not available for FY 2001-02 and FY 2002-03.

¹Refers to running away from a secure or nonsecure placement as well as from home during the 12 months prior to commitment.

²Substance abuse history and treatment needs are assessed within one month of commitment. Youth with minimal substance abuse history and/or treatment needs are identified for prevention services whereas those reporting the greatest history of abuse and treatment needs are targeted for substance abuse treatment services.

³Colorado Client Assessment Record used to assess mental health needs within one month of commitment. Percentages are based on total CCARs given (N=657) and do not include missing data.

NEW COMMITMENT TRENDS

BY GENDER

MALES

FEMALES

FY 2000-01		FY 2003-04		FY 2000-01		FY 2003-04	
N	%	N	%	N	%	N	%

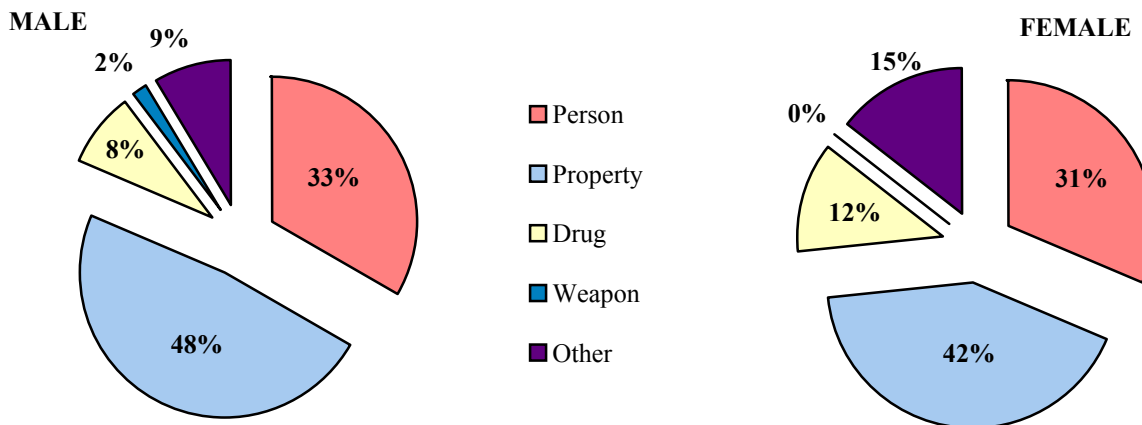
COMMITMENT DATA

Offense Type	N	%	N	%	N	%	N	%
Person Felony	153	22.6%	132	16.6%	18	20.2%	15	11.5%
Person Misdemeanor	100	14.8%	132	16.6%	18	20.2%	26	19.8%
Property Felony	248	36.6%	309	39.0%	23	25.8%	39	29.8%
Property Misdemeanor	65	9.6%	73	9.2%	11	12.4%	16	12.2%
Drug Felony	33	4.9%	53	6.7%	5	5.6%	14	10.7%
Drug Misdemeanor	4	0.6%	12	1.5%	1	1.1%	2	1.5%
Weapons Felony	6	0.9%	7	0.9%	0	0.0%	0	0.0%
Weapons Misdemeanor	13	1.9%	6	0.8%	1	1.1%	0	0.0%
Other	53	7.8%	42	5.3%	12	13.5%	15	11.5%
Data Not Available	2	0.3%	27	3.4%	0	0.0%	4	3.1%
TOTAL NEW COMMITMENTS	677	100%	793	100%	89	100%	131	100%

Sentence Type

Non-Mandatory	498	73.6%	576	72.6%	72	80.9%	112	85.5%
Mandatory	141	20.8%	147	18.5%	12	13.5%	12	9.2%
Repeat	22	3.2%	53	6.7%	4	4.5%	6	4.6%
Violent	7	1.0%	5	0.6%	0	0.0%	0	0.0%
Aggravated Juvenile	9	1.3%	2	0.3%	1	1.1%	0	0.0%
Data Not Available	0	0.0%	10	1.3%	0	0.0%	1	0.8%

FY 2003-04 Offense Type¹



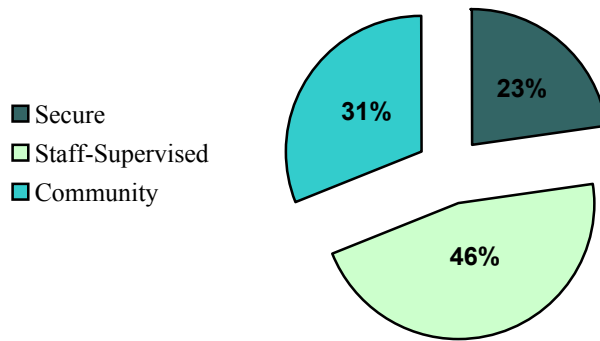
NOTE: Due to the TRAILS conversion process, data is not available for FY 2001-02 and FY 2002-03.

¹Felony and Misdemeanor counts are combined

COMMITTED YOUTH
COMMITMENT CLASSIFICATION

COMMITMENT CLASSIFICATION	FY 2000-01		FY 2003-04	
	N	%	N	%
Secure	208	27.2%	211	22.8%
Staff-Supervised	337	44.0%	425	46.0%
Community	217	28.3%	286	31.0%
Data Not Available	4	0.5%	2	0.2%
Total	766	100%	924	100%

FY 2003-04 Commitment Classification



Offense Severity Score

Serious Person 8+	16	17	18	19	20
Major Property Lesser Person 3 - 7	11	12	13	14	15
Minor Property 1 - 2	6	7	8	9	10
Other Less Serious 0	1	2	3	4	5
	1-3	4-7	8-10	11-12	13-14
	Recidivism Risk Score				



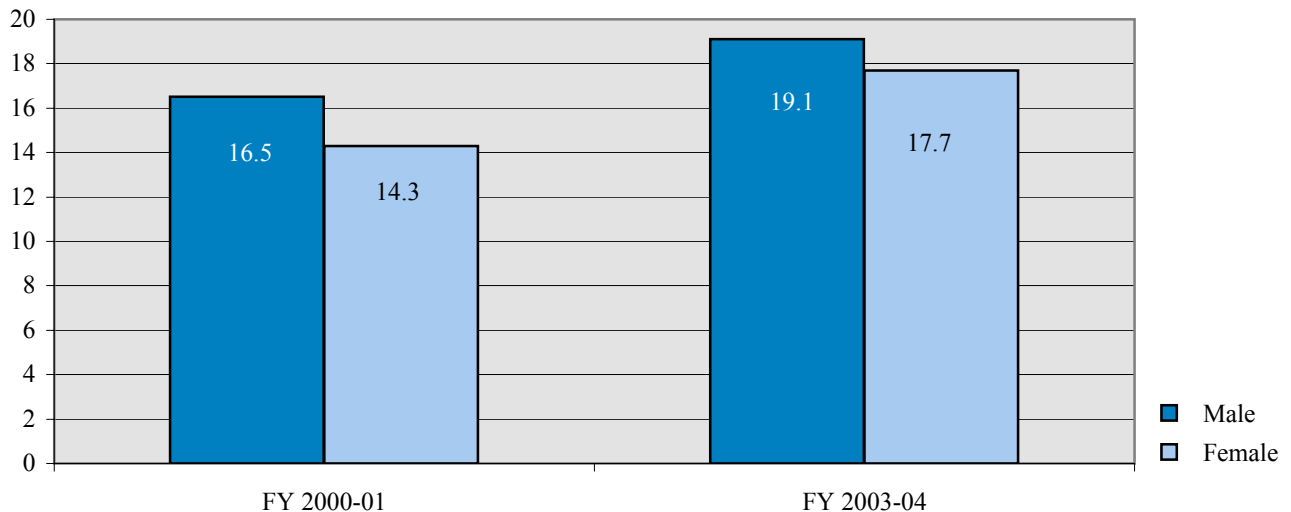
NOTE: Due to the TRAILS conversion process, data is not available for FY 2001-02 and FY 2002-03.

COMMITTED YOUTH
LENGTH OF STAY TRENDS

Residential LOS

	FY 2000-01	FY 2003-04
GENDER		
Male	16.5	19.1
Female	14.3	17.7
TOTAL RESIDENTIAL LOS	16.3	18.9
ETHNICITY		
Anglo-American	16.3	18.5
African-American	17.9	20.0
Hispanic/Latino	15.4	19.2
Native American	17.9	19.1
Asian-American	14.4	16.6
Other	18.1	17.8
AGE¹		
12 Years	14.6	26.6
13 Years	19.5	27.1
14 Years	20.8	24.2
15 Years	18.3	21.4
16 Years	15.7	18.1
17 Years	14.4	16.2
18 Years	14.9	15.2
19 Years	11.1	14.6
20 Years	8.3	3.1

Residential LOS¹



NOTE: Due to the TRAILS conversion process, data is not available for FY 2001-02 and FY 2002-03.

**COMMITTED YOUTH
PAROLE TRENDS**

	FY 2000-01			FY 2003-04		
	ADP	%	LOS ¹	ADP	%	LOS ¹
DYC REGION						
Central	322.1	44.7%	11.6	213.5	39.9%	8.4
Northeast	140.9	19.6%	11.9	123.4	23.0%	8.1
Southern	166.9	23.2%	11.9	123.4	23.0%	7.5
Western	90.9	12.6%	12.7	72.9	13.6%	7.6
Data Not Available	0.0	0.0%	N/A	2.4	0.5%	6.6
TOTAL	720.7	100%	11.8	535.6	100%	8.0
GENDER						
Male	630.6	87.5%	N/A	473.5	88.4%	8.0
Female	90.1	12.5%	N/A	62.2	11.6%	8.1
ETHNICITY						
Anglo American	330.2	45.8%	N/A	260.1	48.6%	7.9
African-American	116.6	16.2%	N/A	76.0	14.2%	8.2
Hispanic/Latino	250.7	34.8%	N/A	177.2	33.1%	8.2
Native American	9.8	1.4%	N/A	0.0	0.0%	7.7
Asian-American	4.4	0.6%	N/A	5.6	1.0%	7.7
Other	9.0	1.2%	N/A	16.8	3.1%	7.6
AGE²						
11 Years	0.0	0.0%	N/A	0.0	0.0%	N/A
12 Years	0.0	0.0%	N/A	0.0	0.0%	N/A
13 Years	0.5	0.1%	N/A	1.7	0.3%	6.0
14 Years	2.1	0.3%	N/A	7.0	1.3%	8.0
15 Years	18.3	2.5%	N/A	39.2	7.3%	10.1
16 Years	52.6	7.3%	N/A	96.4	18.0%	9.4
17 Years	115.9	16.1%	N/A	146.4	27.3%	8.3
18 Years	202.8	28.1%	N/A	157.8	29.5%	7.6
19 Years and older	328.6	45.6%	N/A	87.2	16.3%	7.5

NOTE: Due to the TRAILS conversion process, data is not available for FY 2001-02 and FY 2002-03.

¹Parole LOS expressed in months.

²LOS for each age category corresponds to age at parole. ADP figures are based on the youth's age on the last day of the fiscal year.

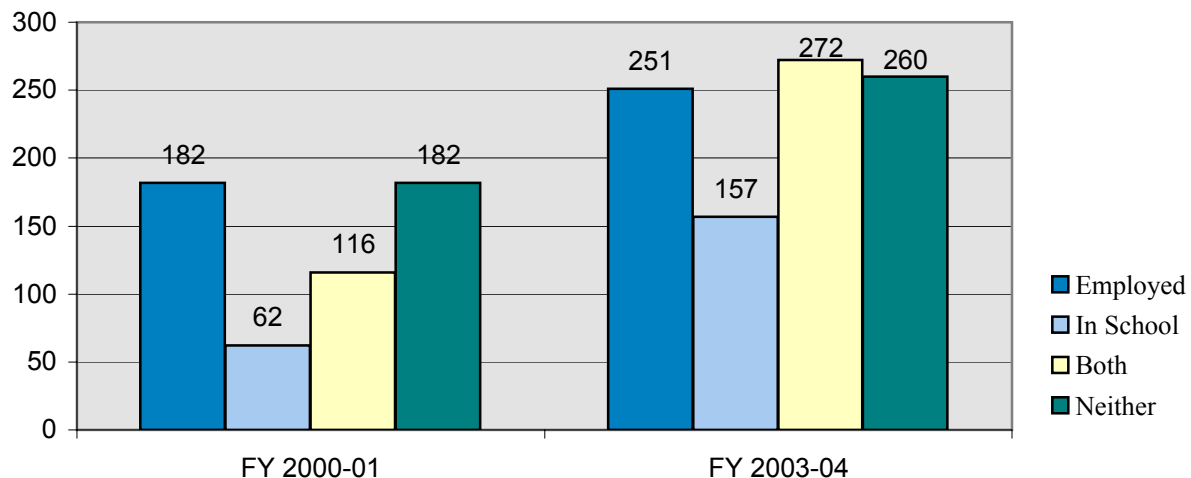
COMMITTED YOUTH DISCHARGE TRENDS

	FY 2000-01		FY 2003-04	
	N	%	N	%
DISCHARGED YOUTH				
DISCHARGE PLACEMENT				
Adult Jail/ Corrections	65	11.9%	110	11.0%
Home	456	83.7%	815	81.3%
Group Living	13	2.4%	23	2.3%
Other Placement	11	2.0%	48	4.8%
Escape	0	0.0%	7	0.7%
TOTAL	545	100%	1003	100%

JOB/ SCHOOL STATUS AT DISCHARGE				
Employed Only	182	33.4%	251	25.0%
Enrolled in School Only	62	11.4%	157	15.7%
Employed and Enrolled in School	116	21.3%	272	27.1%
Unemployed and Unenrolled	182	33.4%	260	25.9%
Data Not Available	3	0.6%	63	6.3%

PAROLE ADJUSTMENT AT DISCHARGE				
Satisfactory to Good	330	60.6%	612	61.0%
Poor to Unsatisfactory	201	36.9%	322	32.1%
Data Not Available	14	2.6%	69	6.9%

Job / School Status at Parole Discharge



NOTE: Due to the TRAILS conversion process, data is not available for FY 2001-02 and FY 2002-03.

COMMITTED YOUTH DEMOGRAPHIC TRENDS
FY 2003-04 DATA BY REGION

	CENTRAL			NORTHEAST			SOUTHERN			WESTERN		
	New ¹	ADP	LOS ²	New ¹	ADP	LOS ²	New ¹	ADP	LOS ²	New ¹	ADP	LOS ²
GENDER												
Male	328	544.3	19.8	186	292.7	19.7	168	246.0	18.4	111	142.2	17.5
Female	54	75.7	19.1	25	28.0	18.9	36	40.3	17.0	16	16.5	13.4
TOTAL	382	620.0	19.7	211	320.7	19.6	204	286.3	18.2	127	158.7	16.8
ETHNICITY												
Anglo-American	148	224.3	19.0	106	152.0	19.5	101	141.0	18.5	94	116.8	16.3
African-American	108	175.9	20.1	12	16.8	19.9	36	49.5	19.8	3	0.6	16.5
Hispanic/Latino	113	199.4	20.1	84	135.8	20.2	65	90.7	17.5	24	34.3	17.6
Native American	4	8.9	23.4	4	4.9	13.4	1	3.9	12.6	5	6.0	20.5
Asian-American	7	7.7	16.9	2	4.5	17.1	1	1.1	14.5	0	0.2	16.3
Other	2	3.8	16.0	3	6.6	N/A	0	0.1	16.4	1	0.8	24.0
AGE³												
11 Years	0	0.0	N/A	0	0.0	N/A	0	0.0	N/A	1	0.6	N/A
12 Years	3	2.3	N/A	0	2.4	32.8	0	3.1	30.0	4	5.5	13.4
13 Years	7	20.2	30.0	6	10.2	30.0	3	7.4	22.8	1	6.9	21.9
14 Years	37	71.8	28.8	17	29.9	21.7	17	35.4	21.4	11	22.8	20.8
15 Years	79	150.6	22.0	38	70.9	22.5	44	70.6	21.0	28	31.7	16.7
16 Years	104	184.6	18.6	63	97.6	18.8	69	86.3	16.9	38	45.5	17.6
17 Years	133	164.2	16.2	78	97.8	17.0	67	75.6	16.1	40	41.6	15.5
18 Years	19	23.3	15.5	8	10.6	12.6	3	4.9	17.0	4	4.0	17.0
19 Years	0	3.1	18.2	1	1.3	19.5	1	2.9	14.6	0	0.0	5.8
Average Age at Commitment:	16.5 Years			16.6 Years			16.5 Years			16.3 Years		
SENTENCE TYPE												
Non-Mandatory	268	462.0	19.0	135	187.6	19.1	170	228.4	18.0	115	127.5	16.6
Mandatory	89	122.7	22.5	46	59.2	20.0	21	42.6	18.9	3	7.0	16.6
Repeat	18	21.5	16.9	26	41.8	16.9	9	9.6	25.9	6	17.3	18.3
Violent	2	3.0	13.3	2	3.3	20.8	1	1.7	17.3	0	0.0	24.0
Aggravated Juvenile	1	7.4	30.3	0	26.2	35.3	1	2.8	N/A	0	3.3	43.5
Data Not Available	4	3.4	15.3	2	2.5	7.5	2	1.2	N/A	3	3.5	4.1

¹Indicates new commitments.

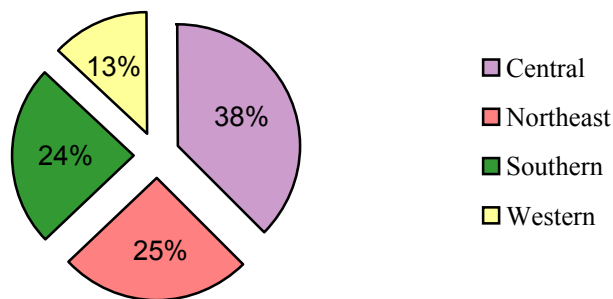
²Residential LOS expressed in months.

³Actual counts for each age category correspond to age at commitment. ADP figures for each age category are based on the youth's age on the last day of the fiscal year.

COMMITTED YOUTH DEMOGRAPHIC TRENDS
FY 2003-04 DATA BY REGION

	CENTRAL		NORTHEAST		SOUTHERN		WESTERN	
	N	%	N	%	N	%	N	%
DISCHARGED YOUTH								
DISCHARGE PLACEMENT								
Adult Jail/ Corrections Home ¹	41	10.9%	33	13.0%	26	10.8%	10	7.6%
Home ¹	313	83.0%	200	79.1%	195	80.9%	107	81.1%
Group Living	3	0.8%	5	2.0%	6	2.5%	9	6.8%
Other Placement	18	4.8%	11	4.3%	14	5.8%	5	3.8%
Escape	2	0.5%	4	1.6%	0	0.0%	1	0.8%
TOTAL	377	100%	253	100.0%	241	100%	132	100%
JOB/ SCHOOL STATUS								
Employed Only	85	22.5%	71	28.1%	49	20.3%	46	34.8%
Enrolled in School Only	56	14.9%	41	16.2%	37	15.4%	23	17.4%
Employed and Enrolled in School	121	32.1%	51	20.2%	64	26.6%	36	27.3%
Unemployed and Unenrolled	91	24.1%	86	34.0%	61	25.3%	22	16.7%
Data Not Available	24	6.4%	4	1.6%	30	12.4%	5	3.8%
PAROLE ADJUSTMENT								
Satisfactory to Good	255	67.6%	128	50.6%	137	56.8%	92	69.7%
Poor to Unsatisfactory	99	26.3%	100	39.5%	92	38.2%	31	23.5%
Data Not Available	23	6.1%	25	9.9%	12	5.0%	9	6.8%
PROGRAM TYPE								
	LOS (Months)²							
Secure	8.8		8.0		8.1		7.7	
Staff Supervised	7.5		8.6		7.2		6.0	
Community Residential	3.3		2.9		2.7		1.9	
Total Residential	19.7		19.6		18.2		16.8	
Parole	8.4		5.0		7.5		7.6	
Total Commitment	27.8		28.0		26.0		23.8	

FY 2003-04 Percent of Discharged Youth by Region



¹The 'Home' category includes parent(s), guardian, adoptive family, foster family, relative, spouse, friend, independent living.

²Residential LOS expressed in months.

Glossary of Terms Used

Disclaimer: *These definitions are provided for quick reference purposes only. Please refer to the Colorado Revised Statutes for more complete definitions of legal categories and conditions.*

Adjudication – The result of an adjudicatory hearing in which the court determines that it has been proven beyond a reasonable doubt that a juvenile has committed a delinquent act, or that a juvenile has pled guilty to committing a delinquent act.

Aggravated Offender (Sentence Type) – see *Sentencing Special Offenders*.

Assessment - Youth committed to DYC are assessed to determine a youth's classification level and needs for appropriate placement and program referral.

Average Daily Population (ADP) - The average number of youth present in a facility or program during the reporting period.

Boot Camp Sentence - A court imposed sentence to the Regimented Juvenile Training Program (RJTP) as a condition of probation. The sentence includes a 60-day military style residential program followed by an aftercare program on supervised probation. The RJTP ended (due to a sunset provision in the statute) as of June 2001.

Colorado Client Assessment Record (CCAR) - An assessment tool used to evaluate mental health treatment needs.

Community Accountability Program – Youth could be sentenced to the Community Accountability Program (CAP) as a condition of probation, after the cessation of the Boot Camp Program. The sentence included a 60-day residential program, focusing on restorative justice and youth skill development. The residential phase was followed by an intensive aftercare program for 120 days, or until the period of probation expires. The aftercare phase, also based on a restorative justice model, focused on continued service delivery to youth and families as well as reintegration into the community. Funding for CAP was eliminated in the FY 2002-03 Supplemental Reduction.

Clients Served: Commitment - The total number of youth served in a particular program during the reporting period. Total clients served in a given category (e.g. secure or staff-supervised) represent unduplicated counts of clients served in those categories. Since youth can be served in more than one type of program in the course of a year, the total clients served in a particular category will not equal the sum of the clients served in each program.

Clients Served: Detention - The total number of youth served in a particular program during the reporting period. Total clients served in a facility or program (e.g. Adams YSC) represents unduplicated counts of clients served in those facilities. Since the same youth can have multiple admissions to detention and be served in more than one particular facility in the course of a year, the total clients served in all facilities will not equal the sum of the clients served in each facility.

Commitment - Commitments are dispositions of juvenile cases resulting in the transfer of legal custody to the Department of Human Services by the court as a result of an adjudicatory hearing on charges of delinquent acts committed by the youth.

Commitment Classification - An objective commitment classification instrument is administered during assessment to guide the placement decisions concerning the type of commitment program most suitable for individual youth given the severity of their commitment offense coupled with the risk of re-offending.

Commitment Length of Stay (LOS) – see ***Total Commitment LOS***.

Commitment Sentences - Juveniles who have been adjudicated delinquent and committed to the Division of Youth Corrections can be given either non-mandatory or mandatory sentences. Mandatory sentences require that a youth spend a specified minimum amount of time in out-of-home placement and can include repeat and violent offenders. Juveniles can also be sentenced as aggravated offenders (Section 19-2-601, C.R.S.).

Community Residential Placement – DYC contracts with a number of private vendors to provide community-based programs to youth presenting the lowest risk of re-offending and youth transitioning from more secure programs. These programs include both group residential care and foster care programs.

Detention - The custodial status of youth who are being confined or supervised after arrest or while awaiting the completion of judicial proceedings. Detention youth are served in secure, state-operated or staff-secure, privately-operated facilities or in non-residential, community-based supervision programs.

Detention Admission - Each admission to detention for temporary custody of youth is tracked under the admission category. In contrast to unduplicated counts of clients served in detention, one youth can have multiple admissions for a single incident. For example, if a youth is admitted to detention on a pretrial basis (preadjudicated) and released, a later sentencing to detention on the original charge would count as a separate admission, even though it is the same youth and the same incident. Likewise, if the youth serves the sentence on weekends, each weekend admission counts as a separate admission.

Detention Sentence - The court imposed sanction of confinement to a detention facility or the Community Accountability Program as a result of an adjudicatory hearing that determined that a delinquent act had been committed. Major sentence types include probation sentences, traffic sentences, handgun sentences, municipal sentences, game and fish sentences, contempt sentences, and 703H sentences (non-probation sentences) for a delinquent act.

Length of Stay (LOS): Commitment - There are several variations of the length of stay measure. All commitment LOS figures are measured in months and are calculated for those youth who spent time in the program for which LOS is reported (e.g., secure) prior to discharge from DYC custody (including either residential or nonresidential parole supervision).

Length of Stay (LOS): Detention - The amount of time spent in a detention facility or program during the time period. All detention LOS figures are measured in days.

Mandatory Sentence Offender- See ***Sentencing Special Offenders***.

Municipal Sentence - Court imposed detention sentence for violation of municipal ordinances.

New Commitment - Commitment of youth who were not previously committed, or who were previously committed but had been discharged from DYC rolls.

Non-Mandatory Sentences - These sanctions involve no minimum out-of-home sentence length. The maximum sentence length cannot exceed 24 months.

Other Residential – Placement category including Job Corps, Group Homes, Hospitalization etc.

Parole - The status of an offender conditionally released from a residential setting by discretion of the Juvenile Parole Board prior to expiration of Commitment, or upon expiration of commitment. Colorado juvenile offenders have a mandatory minimum parole length of 6 months. While on parole a youth is placed under the supervision of a parole officer and is required to observe conditions of release set by the parole officer and the Juvenile Parole Board.

Parole Length of Stay (LOS) -The average amount of time spent on parole for youth discharged from DYC during the reporting period. Parole LOS is reported in months.

Parole Revocation - The administrative action of the Juvenile Parole Board, which removes a youth from parole status in response to a violation of lawfully required conditions of parole, including the prohibition against commission of a new offense. Further parole hearings are scheduled at the discretion of the youth's client manager.

Parole Suspension - The administrative action of the Juvenile Parole Board, which removes a youth from parole status in response to a violation of lawfully required conditions of parole, including the prohibition against commission of a new offense. Reconsideration of parole must occur within 90 days on a date determined by the Juvenile Parole Board.

Parole Violation – Actions by a parolee that do not conform to the conditions of parole.

Preadjudicated - The legal status of youth pending delinquency adjudication decisions. Often these youth are referred to as pre-trial youth since they are generally admitted to detention pending some court action. This category also includes youth who are serving a sentence, such as probation, on a prior delinquency adjudication and who are in detention pending a new court action.

Prior Adjudications - Adjudications that occurred prior to the current detention or commitment event.

Prior Out-of-home Placements - Placements in Social Services or DYC residential programs or other treatment programs prior to the current commitment sentence.

Recommitment - An additional commitment sentence imposed by the court on a youth who has not yet been discharged from DYC.

Repeat Offender - see *Sentencing Special Offenders*.

Glossary of Terms Used

Disclaimer: *These definitions are provided for quick reference purposes only. Please refer to the Colorado Revised Statutes for more complete definitions of legal categories and conditions.*

Adjudication – The result of an adjudicatory hearing in which the court determines that it has been proven beyond a reasonable doubt that a juvenile has committed a delinquent act or that a juvenile has pled guilty to committing a delinquent act.

Aggravated Offender (Sentence Type) – see *Sentencing Special Offenders*.

Assessment - Youth committed to DYC are assessed to determine youth's classification level and needs for appropriate placement and program referral.

Average Daily Population (ADP) - The average number of youth present in a facility or program during the reporting period.

Boot Camp Sentence - A court imposed sentence to the Regimented Juvenile Training Program (RJTP) as a condition of probation. The sentence includes a 60-day military style residential program followed by an aftercare program on supervised probation. The RJTP ended (due to a sunset provision in the statute) as of June 2001

CCAR – Colorado Client Assessment Record. An assessment tool used to evaluate mental health treatment needs.

Community Accountability Program – Youth could be sentenced to the Community Accountability Program (CAP) as a condition of probation, after the cessation of the Boot Camp Program. The sentence included a 60-day residential program focusing on restorative justice and youth skill development. The residential phase was followed by an intensive aftercare program for 120 days or until the period of probation expires. The aftercare phase, also based on a restorative justice model, focused on continued service delivery to youth and families as well as reintegration into the community. Funding for CAP was eliminated in the FY 2002-03 Supplemental Reduction.

Clients Served: Commitment - The total number of youth served in a particular program during the reporting period. Total clients served in a given category (e.g. secure or RTC) represents unduplicated counts of clients served in those categories. Since youth can be served in more than one type of program in the course of a year, the total clients served in a particular category will not equal the sum of the clients served in each program.

Clients Served: Detention - The total number of youth served in a particular program during the reporting period. Total clients served in a facility or program (e.g. Adams YSC or staff secure detention) represents unduplicated counts of clients served in those facilities. Since the same youth can have multiple admissions to detention and be served in more than one particular facility in the course of a year, the total clients served in all facilities will not equal the sum of the clients served in each facility.

Commitment - Commitments are dispositions of juvenile cases resulting in the transfer of legal custody to the Department of Human Services by the court as a result of an adjudicatory hearing on charges of delinquent acts committed by the youth.

Commitment Classification - An objective commitment classification instrument is administered during assessment to guide the placement decisions concerning the type of commitment program most suitable for individual youth given the severity of their commitment offense coupled with the risk of re-offending.

Commitment LOS – see **Total Commitment LOS**

Commitment Sentences - Juveniles who have been adjudicated delinquent and committed to the Division of Youth Corrections can be given either non-mandatory or mandatory sentences. Mandatory sentences require that a youth spend a specified minimum amount of time in out-of-home placement and can include repeat and violent offenders. Juveniles can also be sentenced as aggravated offenders (see *C.R.S. 19-2-601*).

Detention - The custodial status of youth who are being confined after arrest or while awaiting the completion of judicial proceedings. Detention facilities hold youth who are awaiting trial or serving detention sentences.

Detention Admission - Each admission to detention for temporary custody of youth is tracked under the admission category. In contrast to unduplicated counts of clients served in detention, one youth can have multiple admissions for a single incident. For example, if a youth is admitted to detention on a pretrial basis (preadjudicated) and released, a later sentencing to detention on the original charge would count as a separate admission even though it is the same youth and the same incident. Likewise, if the youth serves the sentence on weekends, each weekend admission counts as a separate admission.

Detention Sentence - The court imposed sanction of confinement to a detention facility or boot camp as a result of an adjudicatory hearing which determined that a delinquent act had been committed. Major sentence types include probation sentences, traffic sentences, handgun sentences, municipal sentences, game and fish sentences, contempt sentences, and 703H sentences (non-probation sentences for a delinquent act).

Length of Stay (LOS): Commitment - There are several variations of the length of stay measure. All commitment LOS figures are measured in months and are calculated for those youth who spent time in the program for which LOS is reported (e.g., secure) prior to discharge from DYCS custody (including either residential or nonresidential parole supervision).

Length of Stay (LOS): Detention - The amount of time spent in a detention facility or program during the time period. All detention LOS figures are measured in days.

Mandatory Sentence Offender- see *Sentencing Special Offenders*.

Municipal Sentence - Court imposed detention sentence for violation of municipal ordinances.

New Commitment - Commitment of youth who were not previously committed, or who were previously committed but had been discharged from NYC rolls.

Nonmandatory Sentences - These sanctions involve no minimum out-of-home sentence length, and the maximum sentence length cannot exceed 24 months.

Non- Residential Treatment Center – A Residential Child Care Facility that is not licensed to provide treatment.

Other Residential – Placement category including Job Corps, Group Homes, Hospitalization etc.

Out of State – Placement category for youth who are in a residential placement outside the State of Colorado.

Parole - The status of an offender conditionally released from a residential setting by discretion of the juvenile parole board prior to expiration of Commitment or upon expiration of commitment. Colorado juvenile offenders have a mandatory minimum parole length of 6 months. While on parole a youth is placed under the supervision of a parole officer and required to observe conditions of release set by parole officer and the Juvenile Parole Board.

Parole LOS -The average amount of time spent on parole for youth discharged from NYC during the reporting period.

Parole Revocation - The administrative action of the juvenile parole board, which removes a youth from parole status in response to a violation of lawfully required conditions of parole, including the prohibition against commission of a new offense. Further parole hearings are scheduled at the discretion of the youth's client manager.

Parole Suspension - The administrative action of the juvenile parole board which removes a youth from parole status in response to a violation of lawfully required conditions of parole, including the prohibition against commission of a new offense. Reconsideration of parole must occur within 90 days on a date determined by the parole board.

Parole Violation – Actions by a parolee that do not conform to the conditions of parole.

Preadjudicated - The legal status of youth pending delinquency adjudication decisions. Often these youth are referred to as pre-trial youth since they are generally admitted pending some court action. This category also includes youth who are serving a sentence, such as probation, on a prior delinquency adjudication and who are in detention pending a new court action.

Prior Adjudications - Adjudications which occurred prior to the current detention or commitment event.

Prior Out-of-home Placements - Placements in a Social Services residential program or other treatment program for an extended period prior to commitment.

Probation Sentence - A court imposed detention sentence as a condition of probation or as a violation of the terms and conditions of probation.

Recommitment - An additional commitment imposed by the court on a youth who has not yet been discharged from NYC rolls.

Repeat Offender - see *Sentencing Special Offenders*

Regional Management Structure - Decentralized NYC management structure comprised of four geographic regions in the state.

Residential Programs - Programs that provide 24-hour care.

Residential LOS - is the average amount of time spent in all residential programs (assessment, orientation, secure, staff secure, and community programs) for youth discharged from NYC during the reporting period.

Residential Treatment Center - A placement that is licensed to provide mental health and/or substance abuse treatment.

Sentencing Special Offenders (see Section 19-2-908, C.R.S.)

- a. **Mandatory Sentence Offender** – *These sanctions specify* a minimum time period of up to 24 months or less during which a youth must be in an out-of-home placement.
- b. **Repeat Offender (Sentence Type)** - A 'repeat' sentence type can be imposed on a juvenile who has been previously adjudicated a juvenile delinquent and is adjudicated a juvenile delinquent for a delinquent act that constitutes a felony or if his or her probation is revoked for a delinquent act that constitutes a felony. The court may or may not designate a minimum sentence length.
- c. **Violent Offender (Sentence Type)** - A juvenile may be sentenced as a violent offender if he or she is adjudicated a juvenile delinquent for a delinquent act that constitutes a crime of violence as defined in section 16-11-309(2), Colorado Revised Statutes.
- d. **Aggravated Offender (Sentence Type)** – These sanctions specify a time period of three to seven years during which time a youth must remain in the custody of the Department of Human Services. Contingent upon court approval, youth may be eligible for non-secure placement, parole, or transfer to the Department of Corrections (adult corrections).

State Owned / Privately Operated Programs - Detention or commitment programs which are administered by contract service providers in NYC owned facilities.

State Owned / State Operated Programs - Detention or commitment programs which are administered by NYC employees in NYC owned facilities.

Total Commitment LOS - The average amount of time in NYC custody (sentence start date to discharge date including parole) for all youth discharged from NYC during the reporting period. Does not include escape time.

Violent Offender (Sentence Type) – see *Sentencing Special Offenders*