

Fiscal Year 2002-2003

SUPPLEMENTAL DATA REPORT



Colorado Department of Human Services
Division of Youth Corrections

Working with Colorado Communities to Achieve Justice

December 2003

This report temporarily replaces the Division's annual Management Reference Manual

This manual provides a summary of data currently available regarding DYC client populations. Due to a data system conversion, all data normally published by DYC is not available at this time. Any questions concerning the data presented in this manual may be directed to the Research and Evaluation Unit, Division of Youth Corrections, 4255 S. Knox Court, Denver, CO 80236; (303) 866-7947.

Division of Youth Corrections artwork designed by students of the Lookout Mountain Youth Services Center silkscreening vocational program.

Vision

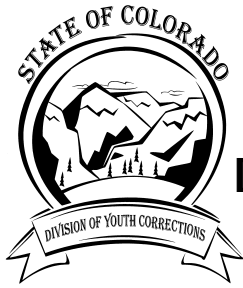
Working with Colorado Communities to Achieve Justice

Mission

The mission of the Division of Youth Corrections is to protect, restore, and improve public safety through a continuum of services and programs that:

- Effectively supervise juvenile offenders;
- Promote offender accountability to victims and communities and;
- Build skills and competencies of youth to become responsible citizens.

DIVISION OF YOUTH CORRECTIONS



DIVISION OF YOUTH CORRECTIONS

TABLE OF CONTENTS

EXECUTIVE SUMMARYi

SECTION I: SUMMARY DATA

POPULATION DATA ON ALL CLIENTS 1

SECTION II: COMMITMENT PROGRAM SERVICES 3

COMMITTED YOUTH POPULATION TRENDS 5
COMMITMENT POPULATION TRENDS IN LENGTH OF STAY 6
COMMITMENT POPULATION ADP TRENDS BY PROGRAM TYPE 7
ADP TRENDS IN RESIDENTIAL PROGRAMS 9
TRENDS IN COMMITMENT LENGTH OF STAY BY PROGRAM TYPE 10
NEW COMMITMENTS BY REGION 11
PAROLE POPULATION TRENDS 12

SECTION III: DETENTION PROGRAM SERVICES 13

DETENTION POPULATION TRENDS 15
DETENTION POPULATION TRENDS BY PROGRAM TYPE 16
DETENTION POPULATION LOS TRENDS 17

EXECUTIVE SUMMARY

This Supplemental Data Report is designed to provide basic statistical information on youth served by the Division of Youth Corrections (DYC) during FY2002-03 and other long-term trend data. Most data provided in this report were derived through a combination of the Division's Colorado TRAILS database and supplemental methods of collecting population data being used by the Division during the TRAILS verification process. A summary of key statistics provided in the report is discussed below.

I. COMMITMENT POPULATION TRENDS AND CHARACTERISTICS

- The Division experienced a surge in new commitments in FY2001-02, translating to a greater than 10% increase over the previous year. This year, however, new commitments fell 2.3% to a yearly total of 824 juveniles.
- Residential Average Daily Population (ADP) increased 4.8% to a new high of 1,327.8 juveniles.
- Thirty-eight percent of the commitment residential ADP was served in state-operated commitment programs and 62% was served in contracted programs.
- The residential ADP has increased by 118% during the past ten years, outpacing the rate of increase in the number of new commitments. The number of new commitments has grown by 52% since FY1992-93.
- Parole ADP has experienced large increases in the past, due to mandatory parole legislation. Between FY 1998-99 and FY2000-01, parole ADP increased 97% to 720.7 ADP. However, changes in the length of mandatory parole (from 12 months to 9 months) led to decreases in parole ADP during FY 2001-02. The parole growth rate resumed its upward trend over the course of FY 2002-03, however the annual Average Daily Population of 567.3 was 18% lower than last year's 692.9 ADP. During this fiscal year, parole legislation changed again. The mandatory sentence dropped from 9 months to 6 months, and as juveniles who had been sentenced under the old legislation are released concurrently with juveniles sentenced under the new mandate, we anticipate another depression in the parole growth rate for fiscal year 2003-04.

II. DETENTION POPULATION TRENDS AND CHARACTERISTICS

- The detention population has been steadily decreasing over the past four fiscal years, and has hit an eight-year low of 497.1 ADP for FY 2002-03. This is an 8.8% drop from last year's 545.0 ADP.
- The ADP in state-operated detention programs represented 86% of the total detention ADP. This is the same percentage as last year, although the ADP in state-operated detention programs did drop 38.2 ADP, to 428.2 juveniles in FY 2002-03.
- The average length of stay (LOS) in detention facilities had been increasing steadily and climbed from 10.8 days in FY1990-00, to more than 15 days in the past two fiscal years.
- Since the close of FY 2002-03 new legislation has set a statewide cap of 479 detention beds.

DIVISION OF YOUTH CORRECTIONS

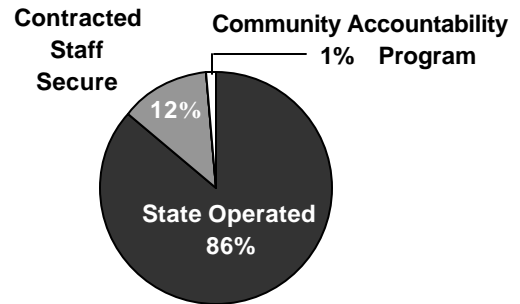
ALL CLIENTS POPULATION DATA

FY 2002-03

ADP¹

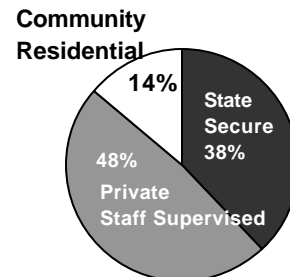
DETAINED YOUTH

| | |
|---------------------------------------|-------|
| State-Operated | 428.2 |
| Contracted Staff Secure | 61.8 |
| Subtotal Detained | 490.0 |
| Community Accountability ² | 7.1 |
| Total Detention | 497.1 |



COMMITTED YOUTH

| | |
|---------------------------------|---------|
| State Secure | 503.7 |
| Private Secure/Staff Supervised | 637.9 |
| Community Residential | 186.3 |
| Subtotal Committed Residential | 1,327.8 |



PAROLE 567.3

TOTAL STATEWIDE ADP³ 2,392.2

Numbers may not add exactly due to rounding.

¹ Average Daily Population

² This 20-bed program was in operation from February 2002 through December 2002.

³ Includes detained, committed, and paroled youth. In previous years, this manual reported a total ADP for committed and detained youth only.



DIVISION OF YOUTH CORRECTIONS

**COMMITTED YOUTH
POPULATION TRENDS**

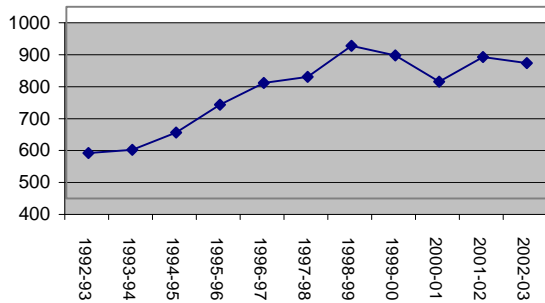
FY 1992-93 through FY 2002-03

| Fiscal Year | Number of Clients Served¹ | Percentage Change +/- | No. of New Commitments | Percentage Change +/- | Residential ADP² | Percentage Change +/- |
|--------------------|---|----------------------------------|-----------------------------------|----------------------------------|--|----------------------------------|
| 1992-93 | 1,637 | | 542 | | 609.3 | |
| 1993-94 | 1,622 | -0.9% | 552 | 1.8% | 612.5 | 0.5% |
| 1994-95 | 1,638 | 1.0% | 606 | 9.8% | 633.9 | 3.5% |
| 1995-96 | 1,769 | 8.0% | 693 | 14.4% | 762.9 | 20.4% |
| 1996-97 | 1,891 | 6.9% | 762 | 10.0% | 929.3 | 21.8% |
| 1997-98 | 2,046 | 8.2% | 781 | 2.5% | 973.5 | 4.8% |
| 1998-99 | 2,269 | 10.9% | 878 | 12.4% | 1,112.2 | 14.2% |
| 1999-00 | 2,544 | 12.1% | 848 | -3.4% | 1,198.3 | 7.7% |
| 2000-01 | 2,702 | 6.2% | 766 | -9.7% | 1,251.8 | 4.5% |
| 2001-02 | 2,747 | 1.7% | 843 | 10.1% | 1,266.8 | 1.2% |
| 2002-03 | 2,689 | -2.1% | 824 | -2.3% | 1,327.8 | 4.8% |

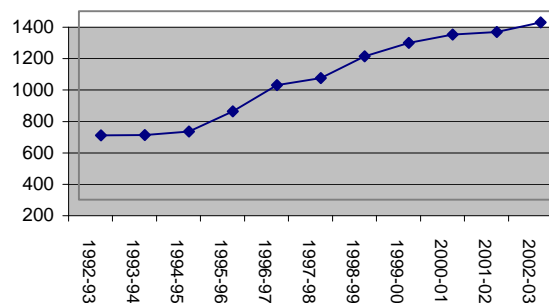
¹Clients served counts are unduplicated.

²ADP: Includes assessment, secure, staff supervised, and community residential.

Trends in New Commitments



Trends in Residential ADP



DIVISION OF YOUTH CORRECTIONS

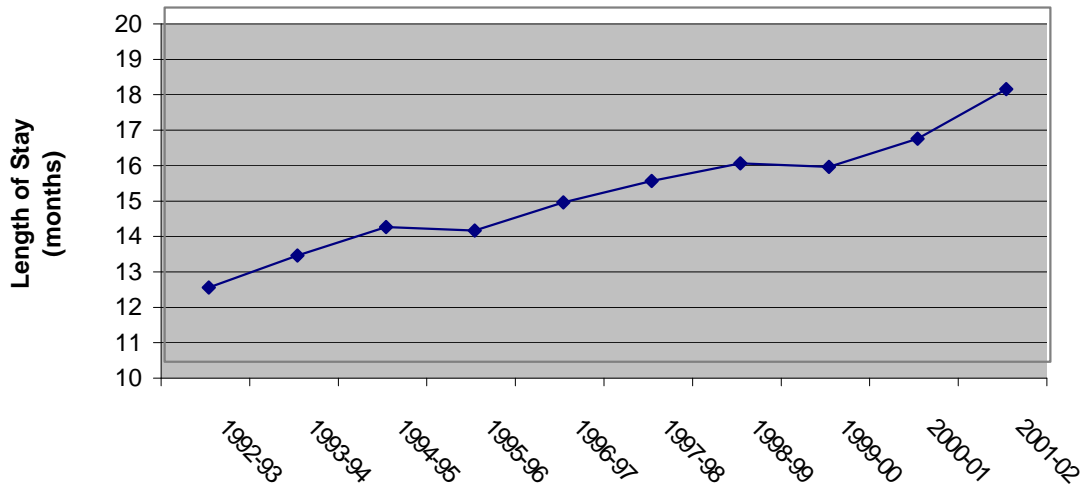
**COMMITTED YOUTH
LENGTH OF STAY (LOS) TRENDS**

FY 1992-93 through FY 2002-03

| Fiscal Year | Length of Stay (months) | Percentage Change +/- |
|----------------------|--------------------------------|------------------------------|
| 1992-93 | 12.1 | |
| 1993-94 | 13.0 | 7.4% |
| 1994-95 | 13.8 | 6.2% |
| 1995-96 | 13.7 | -0.7% |
| 1996-97 | 14.5 | 5.8% |
| 1997-98 | 15.1 | 4.1% |
| 1998-99 | 15.6 | 3.3% |
| 1999-00 | 15.5 | -0.6% |
| 2000-01 | 16.3 | 5.2% |
| 2001-02 ¹ | 17.7 | 8.6% |
| 2002-03 ² | --- | --- |

¹Length of stay for FY 2001-02 is estimated based on youth discharged July 1, 2001 through February 28, 2002. This figure will be updated once Trails verification is complete.

² Length of stay data for FY 2002-03 is not currently available. This figure will be updated when Trails verification is complete.



DIVISION OF YOUTH CORRECTIONS
COMMITMENT POPULATION TRENDS BY PROGRAM TYPE
FY 1998-99 through FY 2002-03

| | FY 1998-99 | FY 1999-00 | FY 2000-01 | FY 2001-02 | FY 2002-03 | | | |
|--------------------------------------|--|-------------|--|---|--|---------|--------------|--------------|
| | ADP | ADP | ADP | ADP | ADP | | | |
| ASSESSMENT: | | | | | | | | |
| Grand Mesa YSC | 8.1 | 7.9 | 7.8 | FY 2001-02 and FY 2002-03 Assessment ADP figures are currently counted with state facility commitment totals. State secure facility totals (below) reflect both assessment and commitment average daily populations, combined. To facilitate comparison, the two figures have been combined and reported for previous years. | | | | |
| Marvin W. Foote YSC | 15.7 | 15.6 | 17.6 | | | | | |
| Mount View YSC | 17.2 | 15.0 | 9.2 | | | | | |
| Platte Valley YSC | 15 | 16.6 | 17.3 | | | | | |
| Spring Creek YSC | 19 | 22.6 | 12.4 | | | | | |
| TOTAL ASSESSMENT | 75.0 | 77.7 | 65.4 | | | | | |
| SECURE: | | | | | | | | |
| | <i>(State Secure & Assessment ADP)</i> | | <i>(State Secure & Assessment ADP)</i> | | <i>(State Secure & Assessment ADP)</i> | | | |
| State Operated: | | | | | | | | |
| Grand Mesa YSC | 31.0 | (39.1) | 36.3 | (44.2) | 39.5 | (47.3) | 46.0 | 53.2 |
| Lookout Mountain YSC | 153.4 | (153.4) | 154.9 | (154.9) | 157.7 | (157.7) | 157.3 | 164.8 |
| Marvin W. Foote YSC | 13.8 | (29.5) | 35.1 | (50.7) | 37.7 | (55.3) | 47.6 | 62.8 |
| Mount View YSC | 12.6 | (29.8) | 28.7 | (43.7) | 31.9 | (41.1) | 42.0 | 61.7 |
| Platte Valley YSC | 53.6 | (68.6) | 55.5 | (72.1) | 67.1 | (84.4) | 77.6 | 79.8 |
| Spring Creek YSC | -- | (19.0) | -- | (22.6) | -- | (12.4) | 14.8 | 40.3 |
| Zeb Pike YSC | 39.7 | (39.7) | 38.9 | (38.9) | 39.6 | (39.6) | 39.5 | 41.2 |
| Subtotal State Secure | 304.1 | (379.1) | 349.4 | (427.1) | 373.5 | (437.8) | 424.9 | 503.7 |
| Privately Operated: | | | | | | | | |
| Brown School | -- | -- | -- | 0.8 | -- | 1.7 | -- | 0.2 |
| Copper Hills | 4.7 | -- | 3.6 | -- | 0.9 | -- | -- | 0.3 |
| Corner Stone Girls View | -- | -- | -- | -- | -- | -- | -- | 20.0 |
| DAYS/Reflections | 23.7 | -- | 10.2 | -- | -- | -- | -- | -- |
| Foothills | 24.5 | -- | 24.7 | -- | 23.5 | -- | 22.1 | 3.1 |
| Grand Prairie | 32.1 | -- | 31.7 | -- | 29.0 | -- | 30.4 | 12.9 |
| Provo Canyon | 22.4 | -- | 15.1 | -- | 10.1 | -- | 10.1 | 3.3 |
| Robert DeNier | -- | -- | 3.1 | -- | 11.5 | -- | 13.5 | 13.4 |
| Teen Quest | 19.7 | -- | 19.3 | -- | 13.0 | -- | 11.8 | 1.4 |
| Youthtrack Lathrop | 25.7 | -- | 30.4 | -- | 28.2 | -- | 29.2 | 28.4 |
| Youthtrack Aspen/Orient. | 66.0 | -- | 47.3 | -- | 48.4 | -- | 40.1 | 38.3 |
| Subtotal Private Secure | 218.8 | -- | 185.4 | -- | 165.4 | -- | 158.9 | 121.3 |
| TOTAL ASSESSMENT & SECURE | 597.9 | | 612.5 | | 604.3 | | 583.8 | 625.0 |

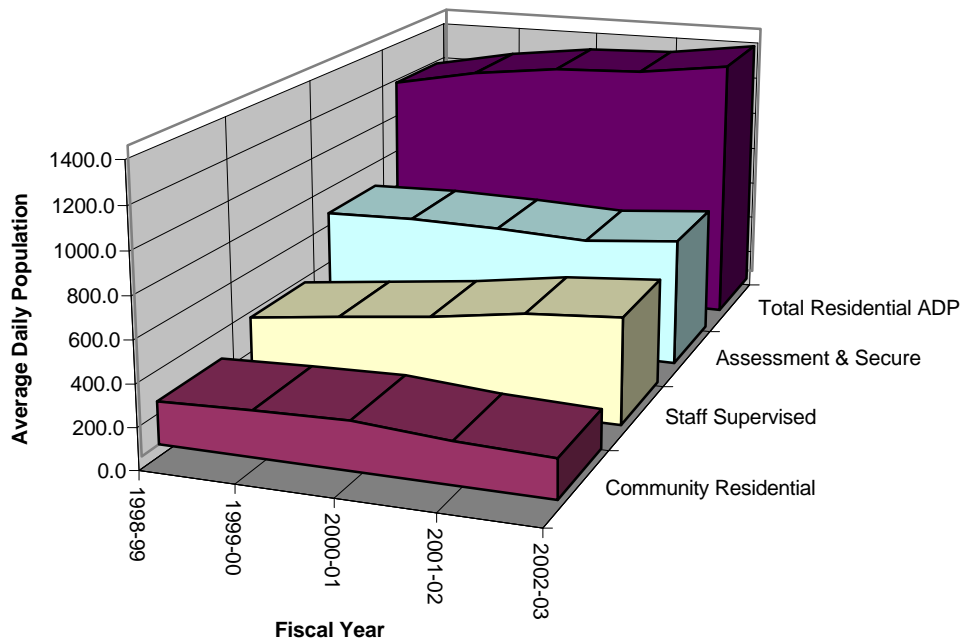
DIVISION OF YOUTH CORRECTIONS
COMMITMENT POPULATION TRENDS BY PROGRAM TYPE
FY 1998-99 through FY 2002-03

| | FY 1998-99 | FY 1999-00 | FY 2000-01 | FY 2001-02 | 2002-03 |
|------------------------------------|----------------|----------------|----------------|----------------|----------------|
| | ADP | ADP | ADP | ADP | ADP |
| STAFF SUPERVISED: | | | | | |
| Privately Operated: | | | | | |
| Alermtative Youth Adventures | -- | -- | 3.9 | 21.7 | 25.4 |
| Aspen Health | 30.3 | 31.0 | 25.6 | 3.7 | -- |
| Cedar Springs | 3.0 | 1.0 | 1.2 | -- | 10.1 |
| Centennial Peaks | 27.5 | 23.1 | 15.9 | -- | -- |
| Cleo Wallace | -- | -- | -- | -- | 7.8 |
| Colorado West | 10.1 | 10.6 | 10.2 | 11.3 | 14.7 |
| Cornel | -- | -- | -- | -- | 0.5 |
| El Pueblo | 9.1 | 11.6 | 14.9 | 9.7 | 9.3 |
| Excelsior | -- | -- | 1.1 | 3.3 | 0.4 |
| Fort Logan Mountain Star | 4.8 | 4.6 | 4.6 | 4.5 | 4.0 |
| Glen Mills | 40.4 | 32.0 | 8.4 | 1.3 | -- |
| Griffith Center | -- | 1.1 | 1.2 | 2.3 | 8.3 |
| Hilltop West | 11.3 | 10.5 | 10.6 | 11.9 | 11.2 |
| Jefferson Hills Aurora | 32.6 | 33.3 | 35.8 | 31.4 | 32.3 |
| Jefferson Hills Lakewood | 48.4 | 38.5 | 24.4 | 12.6 | 11.0 |
| Ridgeview YSC | -- | -- | -- | 169.0 | 309.8 |
| Rite of Passage | 48.1 | 133.7 | 209.6 | 144.1 | 45.7 |
| Sierra Vista | 16.9 | 1.6 | -- | -- | -- |
| Youthtrack Work & Learn | -- | -- | 11.3 | 15.6 | 14.6 |
| Youth Services International | 29.2 | 33.1 | 36.8 | 41.1 | 11.7 |
| TOTAL STAFF SUPERVISED | 311.7 | 365.7 | 415.6 | 483.5 | 516.5 |
| TOTAL COMMUNITY RESIDENTIAL | 202.7 | 220.1 | 233.0 | 199.5 | 186.3 |
| TOTAL RESIDENTIAL | 1,112.3 | 1,198.3 | 1,251.8 | 1,266.8 | 1,327.8 |

**DIVISION OF YOUTH CORRECTIONS
ADP TRENDS IN
RESIDENTIAL PROGRAMS**

Fiscal Years:

| | <u>1998-99</u> | <u>1999-00</u> | <u>2000-01</u> | <u>2001-02</u> | <u>2002-03</u> |
|------------------------------|----------------|----------------|----------------|----------------|----------------|
| Assessment and Secure | 597.9 | 612.5 | 604.3 | 583.8 | 625.0 |
| Staff Supervised | 311.7 | 365.7 | 415.6 | 483.5 | 516.6 |
| Community Residential | 202.7 | 220.1 | 233.0 | 199.5 | 186.2 |
| Total Residential ADP | 1,112.3 | 1,198.3 | 1,251.8 | 1,266.8 | 1,327.8 |



DIVISION OF YOUTH CORRECTIONS
TRENDS IN COMMITMENT LENGTH OF STAY BY PROGRAM TYPE
FY 1998-99 through FY 2002-03

| Program Type | FY 1998-99 | FY 1999-00 | FY 2000-01 | FY 2001-02¹ | FY 2002-03² |
|-------------------------|-------------------|-------------------|-------------------|-------------------------------|-------------------------------|
| Assessment | 1.0 | 1.0 | 1.0 | 1.1 | -- months |
| Secure/Staff Supervised | 11.7 | 11.4 | 11.9 | 14.2 | -- months |
| Community Residential | 5.2 | 5.1 | 5.2 | 5.5 | -- months |
| Total Residential | 15.6 | 15.5 | 16.3 | 17.7 | -- months |
| Total Parole | 8.2 | 11.0 | 11.8 | 12.1 | -- months |
| Total Commitment | 23.6 | 25.8 | 27.9 | 29.1 | -- months |

¹FY 2001-02 LOS is based on youths discharged July 1, 2001 through Feb. 28, 2002.

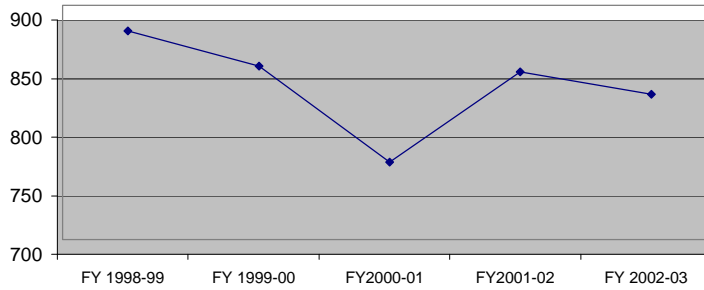
² There is currently no LOS data available for FY 2002-03

DIVISION OF YOUTH CORRECTIONS

NEW COMMITMENT TRENDS FY 1998-99 through FY 2002-03

| | FY 1998-99 | FY 1999-00 | FY 2000-01 | FY 2001-02 | FY 2002-03 |
|---------------|--------------------|--------------------|--------------------|--------------------|--------------------|
| <u>REGION</u> | New Commitments | New Commitments | New Commitments | New Commitments | New Commitments |
| Southern | 202 | 200 | 158 | 191 | 169 |
| Western | 107 | 100 | 94 | 113 | 94 |
| Denver | 190 | 168 | 127 | 177 | 210 |
| Central | 194 | 172 | 186 | 177 | 169 |
| Northeast | 185 | 208 | 201 | 185 | 182 |
| TOTAL | 878 | 848 | 766 | 843 | 824 |

**Trends in New Commitments
FY 1998-99 to FY 2002-03**



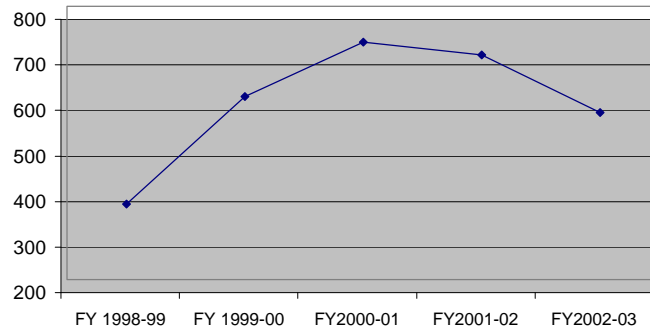
DIVISION OF YOUTH CORRECTIONS

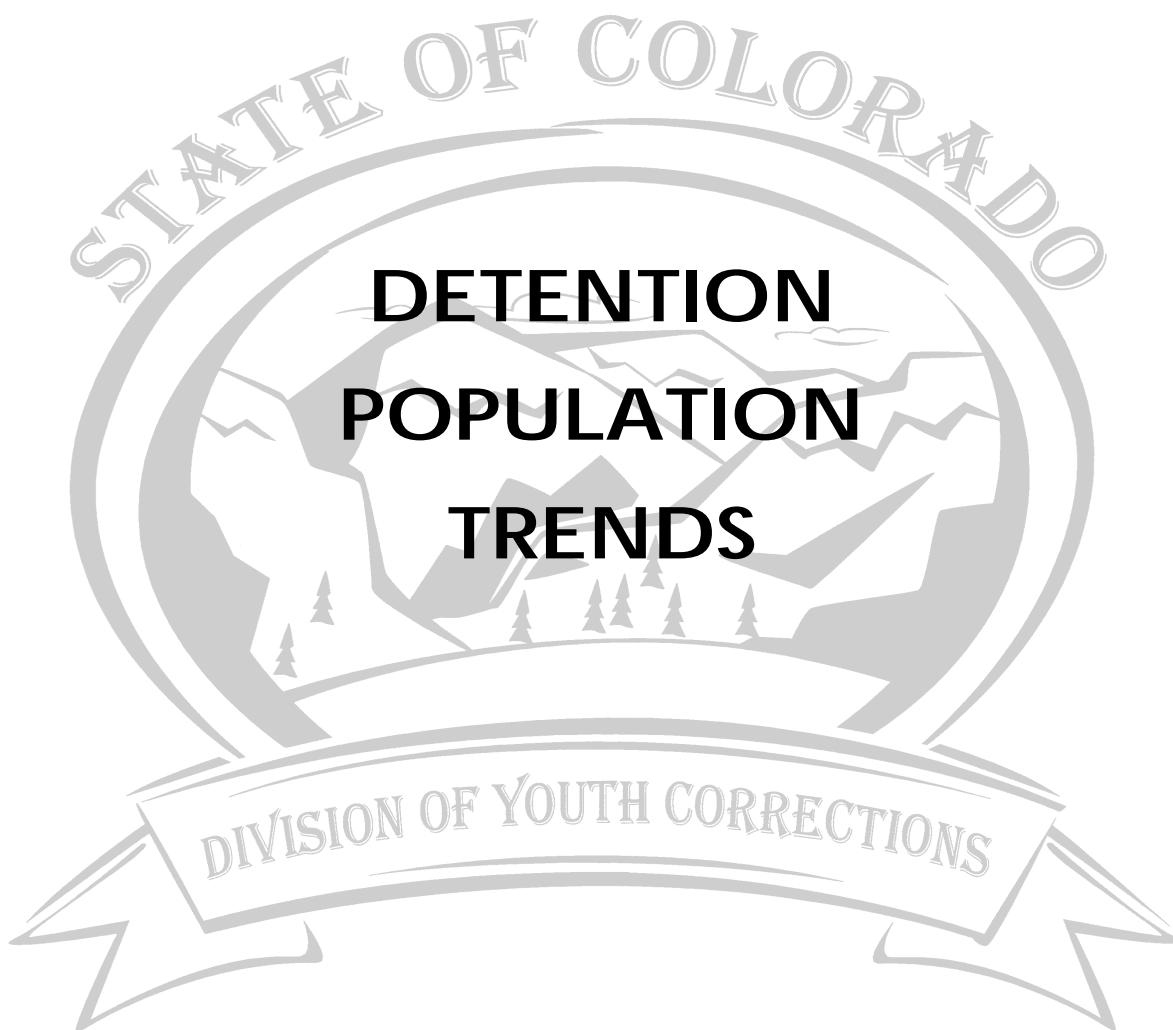
**PAROLE
POPULATION TRENDS
FY 1998-99 through FY 2002-03**

| | FY 1998-99 | FY 1999-00 | FY 2000-01 | FY 2001-02 | FY 2002-03 |
|-----------|------------------------|------------------------|------------------------|------------------------|------------------------|
| | ADP¹ | ADP¹ | ADP¹ | ADP¹ | ADP¹ |
| REGION | | | | | |
| Southern | 91.1 | 154.4 | 166.9 | 154.4 | 128.1 |
| Western | 69.9 | 93.5 | 90.9 | 79.1 | 61.4 |
| Denver | 55.7 | 105.6 | 161.7 | 140.5 | 89.3 |
| Central | 79.0 | 132.6 | 160.4 | 163.0 | 127.1 |
| Northeast | 70.5 | 115.7 | 140.9 | 155.9 | 161.4 |
| TOTAL | 366.1 | 601.7 | 720.7 | 692.9 | 567.3 |

¹Average Daily Population

**Trends in Parole ADP
FY 1998-99 to FY 2002-03**





DIVISION OF YOUTH CORRECTIONS

**DETAINED YOUTH
POPULATION TRENDS¹**

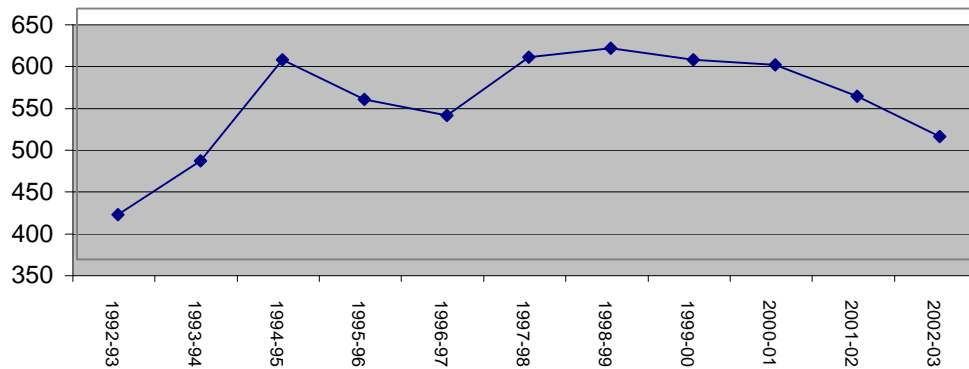
FY 1992-93 through FY 2002-03

| Fiscal Year | Number of Clients Served² | Percentage Change +/- | No. of New Admissions | Percentage Change +/- | ADP | Percentage Change +/- |
|--------------------|---|------------------------------|------------------------------|------------------------------|------------|------------------------------|
| 1992-93 | 6,820 | | 12,388 | | 403.2 | |
| 1993-94 | 7,800 | 14.4% | 16,197 | 30.7% | 467.8 | 16.0% |
| 1994-95 | 8,807 | 12.9% | 16,638 | 2.7% | 589.0 | 25.9% |
| 1995-96 | 7,870 | -10.6% | 13,852 | -16.7% | 541.5 | -8.1% |
| 1996-97 | 8,303 | 5.5% | 14,652 | 5.8% | 522.5 | -3.5% |
| 1997-98 | 8,785 | 5.8% | 15,428 | 5.3% | 591.8 | 13.3% |
| 1998-99 | 8,924 | 1.6% | 15,212 | -1.4% | 602.4 | 1.8% |
| 1999-00 | 8,799 | -1.4% | 15,294 | 0.5% | 589.1 | -2.2% |
| 2000-01 | 8,899 | 1.1% | 14,921 | -2.4% | 583.0 | -1.0% |
| 2001-02 | 8,916 | 0.2% | 16,310 | 9.3% | 545.0 | -6.5% |
| 2002-03 | 8,242 | -7.6% | 14,059 | -13.8% | 497.1 | -8.8% |

¹Contracted holding facilities are used in detention totals.

²Clients served counts are unduplicated.

Trends in Detention Average Daily Population



DIVISION OF YOUTH CORRECTIONS
DETENTION POPULATION TRENDS BY PROGRAM TYPE
FY 1998-99 through FY 2002-03

| | FY 1998-99 | FY 1999-00 | FY 2000-01 | FY 2001-02 | FY 2002-03 |
|--|--------------|--------------|--------------|--------------|--------------|
| | ADP | ADP | ADP | ADP | ADP |
| STATE OPERATED: | | | | | |
| Adams YSC | 32.6 | 28.5 | 33.6 | 31.3 | 29.2 |
| Gilliam YSC | 68.4 | 70.3 | 68.5 | 71.7 | 73.7 |
| Grand Mesa YSC | 31.5 | 29.5 | 28.7 | 31.5 | 27.4 |
| Marvin Foote YSC | 67.7 | 67.1 | 77.7 | 79.4 | 68.5 |
| Mount View YSC | 85.7 | 64.2 | 63.1 | 54.8 | 49.6 |
| Platte Valley YSC | 63.6 | 63.0 | 66.0 | 74.2 | 70.4 |
| Pueblo YSC | 41.4 | 47.3 | 44.0 | 42.1 | 41.6 |
| Spring Creek YSC | 78.7 | 86.3 | 83.2 | 81.5 | 67.7 |
| SUBTOTAL STATE OPERATED | 469.5 | 456.1 | 464.6 | 466.5 | 428.2 |
| PRIVATELY OPERATED | | | | | |
| Staff Secure: | | | | | |
| Colorado West | 3.3 | 2.3 | 3.0 | 2.4 | 1.4 |
| Dahlia Street | 24.5 | 20.2 | 20.6 | 27.0 | 24.5 |
| Gateway (Central) | 1.1 | 1.1 | -- | -- | -- |
| Gateway (Southern) | 1.8 | 1.9 | 1.2 | 1.6 | 1.2 |
| Hilltop Youth Services ¹ | 3.0 | 2.9 | 3.2 | 6.5 | 2.7 |
| LaPlata Youth Services | 1.2 | 0.4 | -- | -- | -- |
| Midway Shelter | 6.8 | 8.1 | 8.7 | 8.6 | 7.0 |
| Moffat County | 2.0 | 1.1 | 0.1 | -- | -- |
| Robert DeNier | -- | 4.8 | 10.7 | 13.2 | 12.0 |
| Shiloh | -- | -- | -- | -- | 0.5 |
| Trailhead | -- | -- | -- | 0.3 | 1.2 |
| Youthtrack Alamosa | 12.1 | 6.2 | 6.9 | 6.1 | 4.2 |
| Youthtrack Fillmore | 8.6 | 7.0 | 5.7 | 6.7 | 6.5 |
| Prowers | -- | -- | -- | -- | 0.8 |
| Subtotal Staff Secure | 64.3 | 55.9 | 35.2 | 72.4 | 61.8 |
| Community Accountability ² & Boot Camp | 68.6 | 77.1 | 53.4 | 6.1 | 7.1 |
| SUBTOTAL PRIVATELY OPERATED | 132.9 | 133.0 | 119.5 | 78.5 | 68.9 |
| TOTAL DETENTION | 602.4 | 589.1 | 583.0 | 545.0 | 497.1 |

¹ Includes Brown Center Operated by Hilltop Youth Services during FY 01-02 and FY 02-03

² Prior to FY02, the Division operated the Juvenile Regimented Training Program (Boot Camp) as an additional sentencing option. This program closed during FY 2000-01. The Community Accountability Program began serving youth in April, 2002.

DIVISION OF YOUTH CORRECTIONS

**DETAINED YOUTH
LENGTH OF STAY (LOS) TRENDS**

FY 1992-93 through FY 2002-03

| Fiscal Year | Length of Stay (days) | Percentage Change +/- |
|--------------------|--------------------------------------|----------------------------------|
| 1992-93 | 12.0 | |
| 1993-94 | 10.4 | -13.3% |
| 1994-95 | 13.2 | 26.9% |
| 1995-96 | 13.7 | 3.8% |
| 1996-97 | 13.0 | -5.1% |
| 1997-98 | 13.9 | 6.9% |
| 1998-99 | 14.6 | 5.0% |
| 1999-00 | 14.3 | -2.1% |
| 2000-01 | 14.5 | 1.4% |
| 2001-02 | 15.7 | 8.3% |
| 2002-03 | 15.3 | -2.5% |

