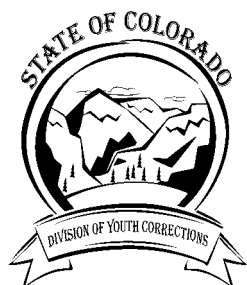


Fiscal Year 2001-2002

SUPPLEMENTAL DATA REPORT



Colorado Department of Human Services
Division of Youth Corrections

Working with Colorado Communities to Achieve Justice

December 2002

This report temporarily replaces the Division's annual Management Reference Manual

This manual provides a summary of data currently available regarding DYC client populations. Due to a data system conversion, all data normally published by DYC is not available at this time. Any questions concerning the data presented in this manual may be directed to the Research and Evaluation Unit, Division of Youth Corrections, 4255 S. Knox Court, Denver, CO 80236; (303) 866-7981.

Division of Youth Corrections artwork designed by students of the Lookout Mountain Youth Services Center silkscreening vocational program.

Vision

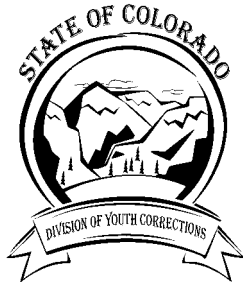
Working with Colorado Communities to Achieve Justice

Mission

The mission of the Division of Youth Corrections is to protect, restore, and improve public safety through a continuum of services and programs that:

- **Effectively supervise juvenile offenders;**
- **Promote offender accountability to victims and communities and;**
- **Build skills and competencies of youth to become responsible citizens.**

DIVISION OF YOUTH CORRECTIONS



DIVISION OF YOUTH CORRECTIONS

TABLE OF CONTENTS

EXECUTIVE SUMMARY	i
SECTION I: SUMMARY DATA	
<i>POPULATION DATA ON ALL CLIENTS.....</i>	<i>1</i>
SECTION II: COMMITMENT PROGRAM SERVICES	
<i>COMMITTED YOUTH POPULATION TRENDS (1992-2002)</i>	<i>5</i>
<i>COMMITMENT POPULATION TRENDS IN LENGTH OF STAY (1992-2002) ...</i>	<i>6</i>
<i>COMMITMENT POPULATION ADP TRENDS BY PROGRAM TYPE</i>	<i>7</i>
<i>ADP TRENDS IN RESIDENTIAL PROGRAMS</i>	<i>9</i>
<i>TRENDS IN COMMITMENT LENGTH OF STAY BY PROGRAM TYPE</i>	<i>10</i>
<i>NEW COMMITMENTS BY REGION.....</i>	<i>11</i>
<i>PAROLE POPULATION TRENDS</i>	<i>12</i>
SECTION III: DETENTION PROGRAM SERVICES	
<i>DETENTION POPULATION TRENDS (1992-2002)</i>	<i>15</i>
<i>DETENTION POPULATION TRENDS BY PROGRAM TYPE</i>	<i>16</i>
<i>DETENTION POPULATION LOS TRENDS.....</i>	<i>17</i>

EXECUTIVE SUMMARY

This Supplemental Data Report is designed to provide basic statistical information on youth served by the Division of Youth Corrections (DYC) during FY2001-02 and other long-term trend data. Most data provided in this report were derived through a combination of the Division's previous Client Data System and supplemental methods of collecting population data being used by the Division during the Trails verification process. A summary of key statistics provided in the report is discussed below.

I. COMMITMENT POPULATION TRENDS AND CHARACTERISTICS

- The Division experienced a surge in new commitments in FY2001-02, translating to a greater than 10% increase over last year. In FY2001-02 there were 843 new commitments to DYC, compared with 766 in the previous year. While this does represent a dramatic one-year increase, the number of new commitments this fiscal year is comparable with those in FY1998-99 and FY1999-00.
- Residential Average Daily Population (ADP) also increased, albeit at a slower rate. This increase is likely due more to increases in Length of Stay (LOS), than in new commitments.
- There was an ADP of 1,960 youth in commitment programs in FY2001-02; 1,267 in residential programs and 693 on parole.
- Thirty-four percent of the commitment residential ADP was served in state-operated commitment programs and 66% was served in contracted programs.
- The residential ADP has increased by 125% during the past ten years, outpacing the rate of increase in the number of new commitments. The number of new commitments has grown by 39% since FY1991-92.
- Sharp increases in ADP have been driven largely by increases in residential LOS. In the past 10 years average residential LOS has increased 36%, including a sharp (nearly nine percent) increase last year alone.
- Parole ADP has experienced large increases in the past, due to mandatory parole legislation. Between FY 1998-99 and FY2000-01, parole ADP increased 97% to 720.7 ADP. However, very recent changes in the length of mandatory parole (from 12 months to 9 months) have already led to decreases in parole ADP. ADP on parole for FY2001-02 was 692.9. Length of stay on parole has increased from an average of 8.2 months in FY1998-99 to a peak of 12.1 months in February of FY2001-02. This number will begin to drop as the impacts of the reduction of parole length of stay are realized. Once new LOS figures are computed for all of FY2001-02, this LOS on parole will likely be lower.

DIVISION OF YOUTH CORRECTIONS

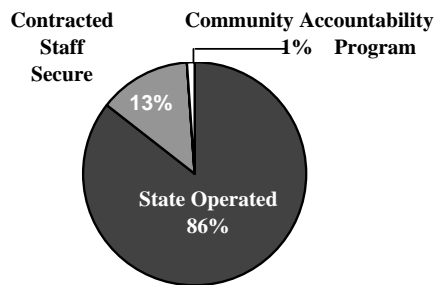
**ALL CLIENTS
POPULATION DATA**

FY 2001-02

ADP¹

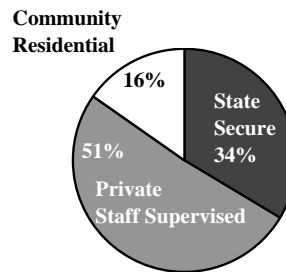
DETAINED YOUTH

State-Operated	466.4
Contracted Staff Secure	72.5
Subtotal Detained	538.9
 Community Accountability ²	 6.1
 Total Detention	 545.0



COMMITTED YOUTH

State Secure	424.9
Private Secure/Staff Supervised	648.1
Community Residential	193.8
 Subtotal Committed Residential	 1,266.8



PAROLE 692.9

TOTAL STATEWIDE ADP³ 2,504.7

Numbers may not add exactly due to rounding.

¹ Average Daily Population

² This 20-bed program began serving youth February 1, 2002.



DIVISION OF YOUTH CORRECTIONS

**COMMITTED YOUTH
POPULATION TRENDS**

FY 1991-92 through FY 2001-02

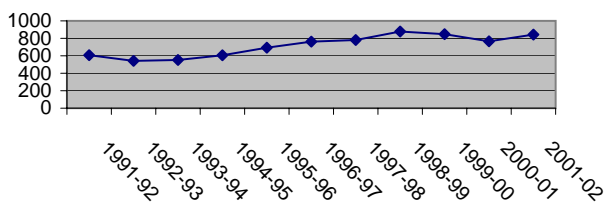
Fiscal Year	Number of Clients Served ¹	Percentage Change +/-	No. of New Commitments	Percentage Change +/-	Residential ADP ²	Percentage Change +/-
1991-92	1,599		607		563.4	
1992-93	1,637	2.4%	542	-10.7%	609.3	8.1%
1993-94	1,622	-0.9%	552	1.8%	612.5	0.5%
1994-95	1,638	1.0%	606	9.8%	633.9	3.5%
1995-96	1,769	8.0%	693	14.4%	762.9	20.4%
1996-97	1,891	6.9%	762	10.0%	929.3	21.8%
1997-98	2,046	8.2%	781	2.5%	973.5	4.8%
1998-99	2,269	10.9%	878	12.4%	1,112.2	14.2%
1999-00	2,544	12.1%	848	-3.4%	1,198.3	7.7%
2000-01	2,702	6.2%	766	-9.7%	1,251.8	4.5%
2001-02	-- ³	--	843	10.1%	1,266.8	1.2%

¹Clients served counts are unduplicated.

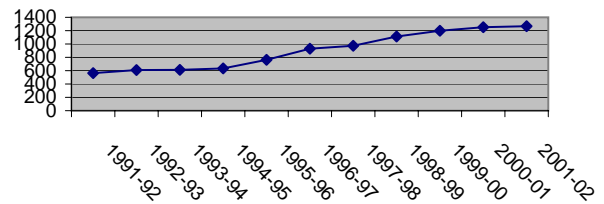
²ADP: Includes assessment, secure, staff supervised, and community residential.

³Data for number of clients served is not currently available for FY 01-02.

Trends in New Commitments



Trends in Residential ADP



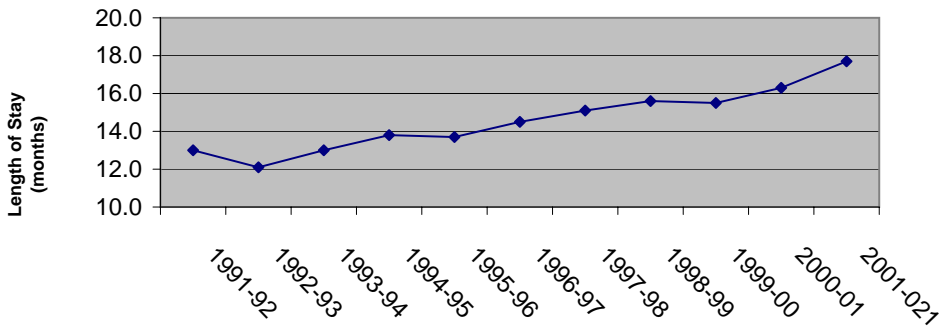
DIVISION OF YOUTH CORRECTIONS

**COMMITTED YOUTH
LENGTH OF STAY (LOS) TRENDS**

FY 1991-92 through FY 2001-02

Fiscal Year	Length of Stay (months)	Percentage Change +/-
1991-92	13.0	
1992-93	12.1	-6.9%
1993-94	13.0	7.4%
1994-95	13.8	6.2%
1995-96	13.7	-0.7%
1996-97	14.5	5.8%
1997-98	15.1	4.1%
1998-99	15.6	3.3%
1999-00	15.5	-0.6%
2000-01	16.3	5.2%
2001-02 ¹	17.7	8.6%

¹Length of stay for FY 2001-02 is estimated based on youth discharged July 1, 2001 through February 28, 2002. This figure will be updated once Trails verification is complete.



DIVISION OF YOUTH CORRECTIONS
COMMITMENT POPULATION TRENDS BY PROGRAM TYPE

FY 1998-99 through FY 2001-02

	<u>FY 1998-99</u>	<u>FY 1999-00</u>	<u>FY 2000-01</u>	<u>FY 2001-02</u>
	<u>ADP</u>	<u>ADP</u>	<u>ADP</u>	<u>ADP</u>
ASSESSMENT:				
Grand Mesa YSC	8.1	7.9	7.8	FY 2001-02 Assessment ADP figures are currently counted with state facility commitment totals. State secure facility totals (below) reflect both assessment and commitment average daily populations, combined. To facilitate comparison, the two figures have been combined and reported for previous years.
Marvin W. Foote YSC	15.7	15.6	17.6	
Mount View YSC	17.2	15.0	9.2	
Platte Valley YSC	15.0	16.6	17.3	
Spring Creek YSC	19.0	22.6	12.4	
TOTAL ASSESSMENT	75.0	77.7	65.4	
SECURE:				
	<i>(State Secure & Assessment ADP)</i>	<i>(State Secure & Assessment ADP)</i>	<i>(State Secure & Assessment ADP)</i>	
State Operated:				
Grand Mesa YSC	31.0 (39.1)	36.3 (44.2)	39.5 (47.3)	46.0
Lookout Mountain YSC	153.4 (153.4)	154.9 (154.9)	157.7 (157.7)	157.3
Marvin W. Foote YSC	13.8 (29.5)	35.1 (50.7)	37.7 (55.3)	47.6
Mount View YSC	12.6 (29.8)	28.7 (43.7)	31.9 (41.1)	42.0
Platte Valley YSC	53.6 (68.6)	55.5 (72.1)	67.1 (84.4)	77.6
Spring Creek YSC ¹	-- (19.0)	-- (22.6)	-- (12.4)	14.8
Zeb Pike YSC	39.7 (39.7)	38.9 (38.9)	39.6 (39.6)	39.5
Subtotal State Secure	304.1 (379.1)	349.4 (427.1)	373.5 (437.8)	424.9
Privately Operated:				
Brown School ²	--	--	0.8	1.7
Copper Hills	4.7	3.6	0.9	--
DAYS/Reflections	23.7	10.2	0.0	--
Foothills	24.5	24.7	23.5	22.1
Grand Prairie	32.1	31.7	29.0	30.4
Provo Canyon	22.4	15.1	10.1	10.1
Robert DeNier ³	--	3.1	11.5	13.5
Teen Quest	19.7	19.3	13.0	11.8
Youthtrack Lathrop	25.7	30.4	28.2	29.2
Youthtrack Aspen/Orient. ⁴	66.0	47.3	48.4	45.8
Subtotal Private Secure	218.8	185.4	165.4	164.6
TOTAL ASSESSMENT & SECURE	597.9	612.5	604.3	589.5

¹ Spring Creek numbers reflect assessment only in FY01-02.

² Brown School began providing commitment secure services in FY2000-01.

³ Robert DeNier Youth Services Center began providing secure services in January, 2000 and is a state-owned privately operated facility. The facility also provides assessment services.

⁴ Youthtrack Aspen began providing commitment secure services in FY2000-01 and is combined with the Youthtrack Orientation ADP figures for FY 2001-02.

DIVISION OF YOUTH CORRECTIONS
COMMITMENT POPULATION TRENDS BY PROGRAM TYPE
FY 1998-99 through FY 2001-02

	<u>FY 1998-99</u>	<u>FY 1999-00</u>	<u>FY 2000-01</u>	<u>FY 2001-02</u>
	<u>ADP</u>	<u>ADP</u>	<u>ADP</u>	<u>ADP</u>
STAFF SUPERVISED:				
Privately Operated:				
Alerntative Youth Adventures ¹	--	--	3.9	21.7
Aspen Health	30.3	31.0	25.6	3.7
Cedar Springs ²	3.0	1.0	1.2	0.0
Centennial Peaks	27.5	23.1	15.9	0.0
Colorado West	10.1	10.6	10.2	11.3
El Pueblo	9.1	11.6	14.9	9.7
Excelsior ³	--	--	1.1	3.3
Fort Logan Mountain Star	4.8	4.6	4.6	4.5
Glen Mills	40.4	32.0	8.4	1.3
Griffith Center ⁴	--	1.1	1.2	2.3
Hilltop West	11.3	10.5	10.6	11.9
Jefferson Hills Aurora	32.6	33.3	35.8	31.4
Jefferson Hills Lakewood	48.4	38.5	24.4	12.6
Ridgeview YSC ⁵	--	--	--	169.0
Rite of Passage	48.1	133.7	209.6	144.1
Sierra Vista	16.9	1.6	0.0	0.0
Youthtrack Work & Learn ⁶	--	--	11.3	15.6
Youth Services International ⁷	29.2	33.1	36.8	41.1
TOTAL STAFF SUPERVISED	311.7	365.7	415.6	483.5
TOTAL COMMUNITY				
RESIDENTIAL⁸	202.7	220.1	233.0	193.8
TOTAL RESIDENTIAL	1,112.3	978.2	1,251.8	1266.8

¹ Alternative Youth Adventures began serving youth in FY2000-01.

² Cedar Springs has begun a new contract for FY2002-03. During FY2001-02 this facility served .85 ADP under a purchase order.

³ Excelsior began serving youth in FY2000-01.

⁴ Griffith Center began serving youth in FY2000-01.

⁵ Ridge View Youth Services Center began serving youth in FY 2001-02.

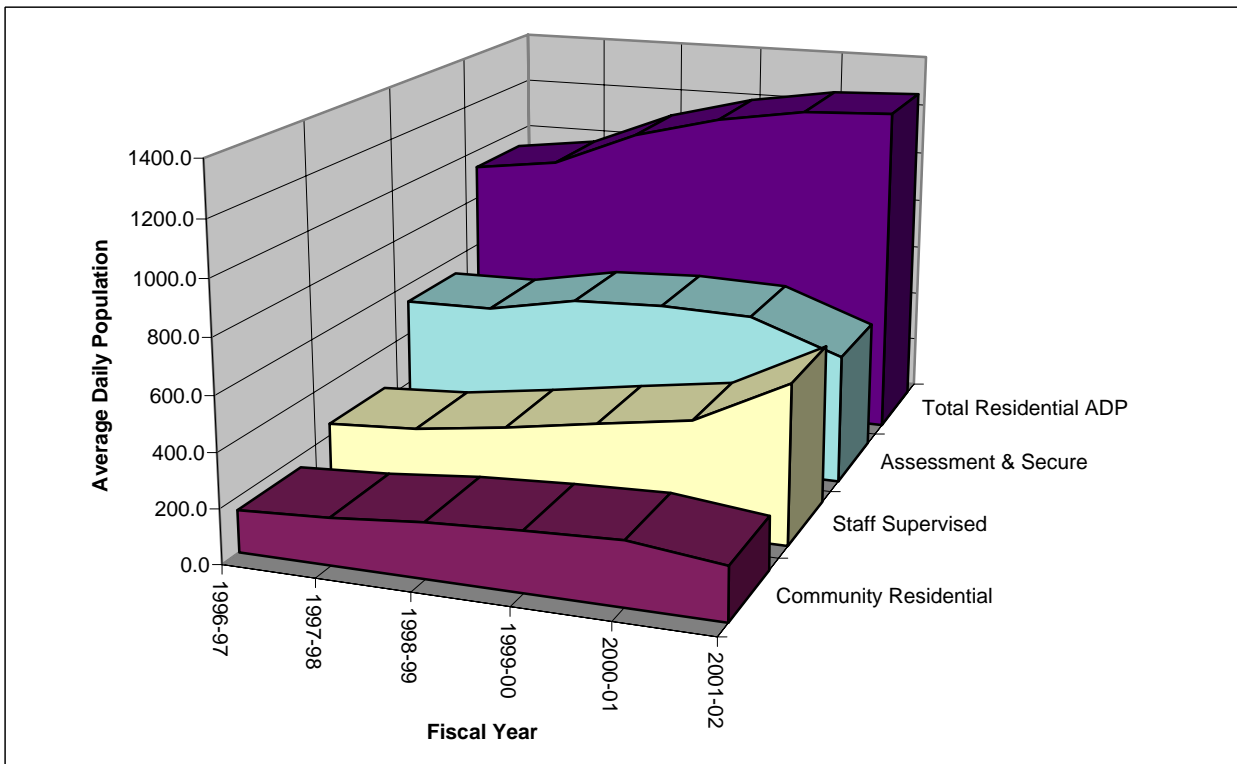
⁶ Youthtrack Work and Learn began serving youth in FY2000-01.

⁷ Includes Chamberlain, Clarinda, Forest Ridge, Springfield, Tarkio and Woodward facilities.

**DIVISION OF YOUTH CORRECTIONS
ADP TRENDS IN
RESIDENTIAL PROGRAMS**

Fiscal Years:

	1996-97	1997-98	1998-99	1999-00	2000-01	2001-02
Assessment and Secure	529.7	535.1	597.9	612.5	603.4	589.5
Staff Supervised	245.2	265.2	311.7	365.7	415.6	483.5
Community Residential	154.4	173.2	202.7	220.1	233.0	193.8
Total Residential ADP	929.3	973.5	1,112.3	1,198.3	1,251.8	1266.8



TRENDS IN COMMITMENT LENGTH OF STAY BY PROGRAM TYPE¹
FY 1998-99 through FY 2001-02

<u>Program Type</u>	<u>FY 1998-99</u>	<u>FY 1999-00</u>	<u>FY 2000-01</u>	<u>FY 2000-02¹</u>
Assessment	1.0	1.0	1.0	1.1 months
Secure/Staff Supervised	11.7	11.4	11.9	14.2 months
Community Residential	5.2	5.1	5.2	5.5 months
Total Residential	15.6	15.5	16.3	17.7 months
Total Parole	8.2	11.0	11.8	12.1 months
Total Commitment	23.6	25.8	27.9	29.1 months

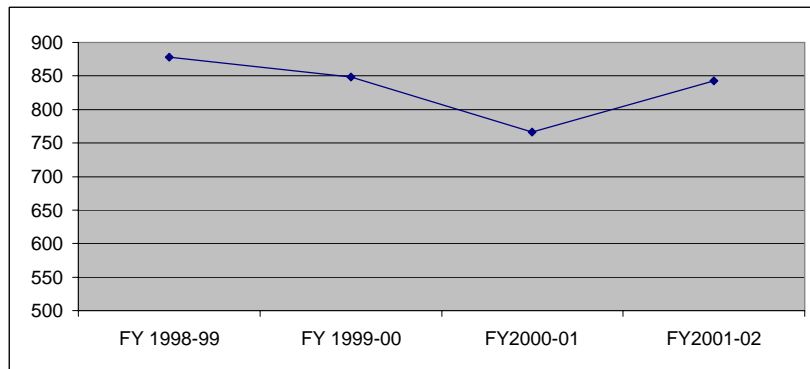
¹FY 2001-02 LOS is based on youths discharged July 1, 2001 through Feb. 28, 2002.

DIVISION OF YOUTH CORRECTIONS

**NEW COMMITMENT TRENDS
FY 1998-99 through FY 2001-02**

	<u>FY 1998-99</u>	<u>FY 1999-00</u>	<u>FY 2000-01</u>	<u>FY 2001-02</u>
	New Commitments	New Commitments	New Commitments	New Commitments
REGION				
Southern	202	200	158	191
Western	107	100	94	113
Denver	190	168	127	177
Central	194	172	186	177
Northeast	185	208	201	185
TOTAL	878	848	766	843

Trends in New Commitments
FY 1998-99 to FY 2001-02



DIVISION OF YOUTH CORRECTIONS

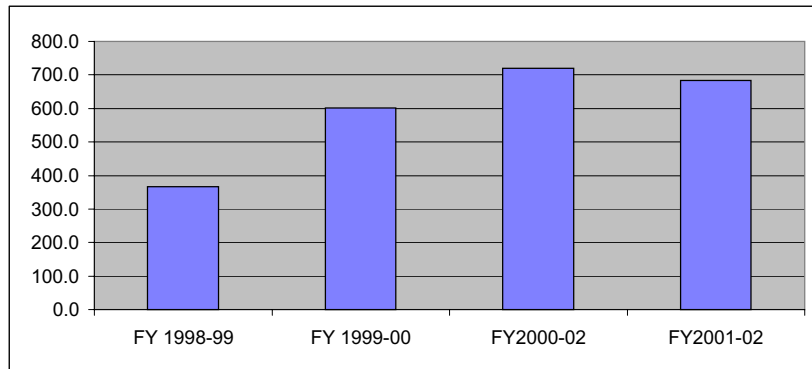
**PAROLE
POPULATION TRENDS**

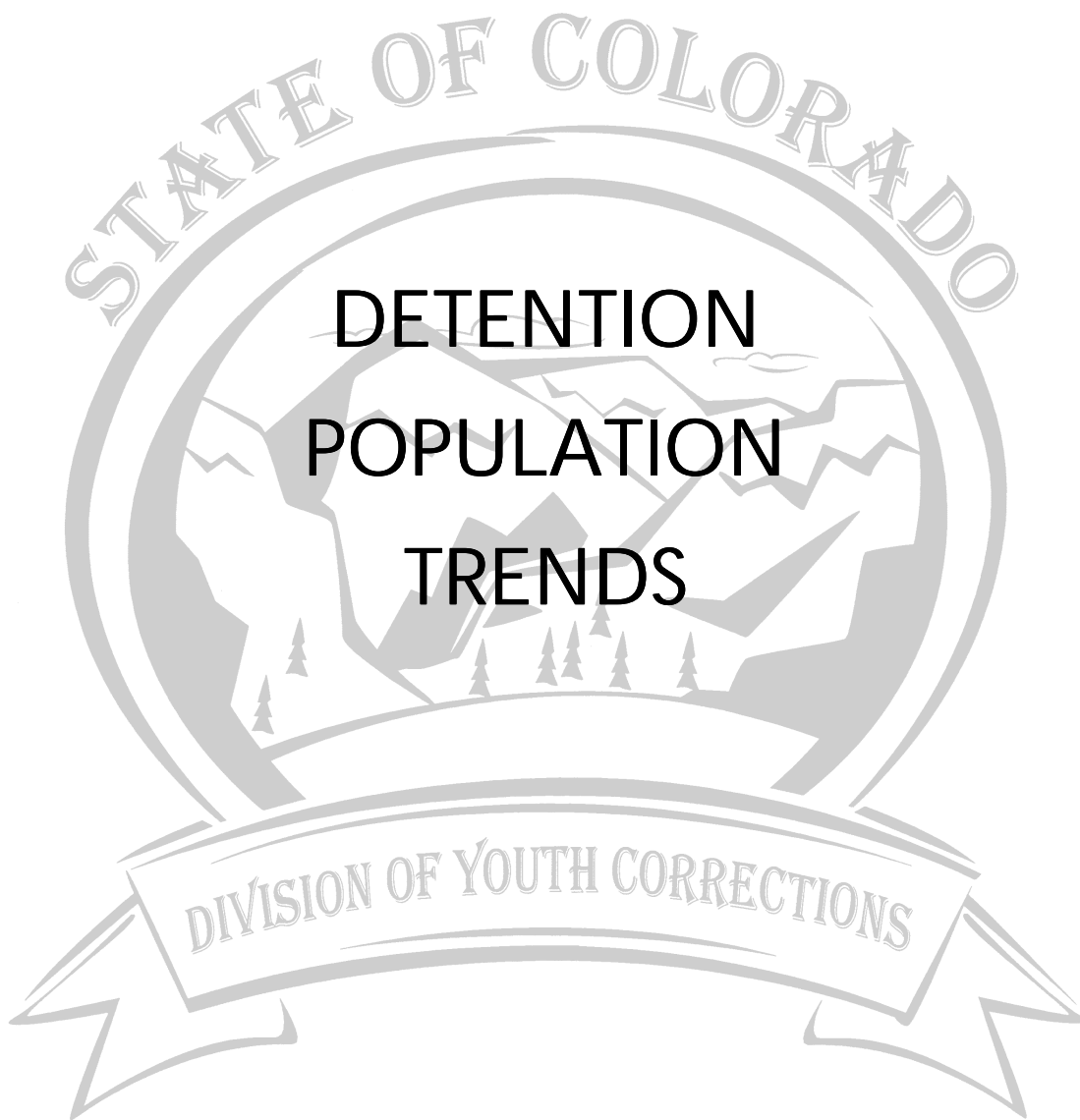
FY 1998-99 through FY 2001-02

	<u>FY 1998-99</u>	<u>FY 1999-00</u>	<u>FY 2000-01</u>	<u>FY 2001-02</u>
	<u>ADP¹</u>	<u>ADP¹</u>	<u>ADP¹</u>	<u>ADP¹</u>
REGION				
Southern	91.1	154.4	166.9	154.4
Western	69.9	93.5	90.9	79.1
Denver	55.7	105.6	161.7	140.5
Central	79.0	132.6	160.4	163.0
Northeast	70.5	115.7	140.9	155.9
TOTAL	366.1	601.7	720.7	692.9

¹Average Daily Population

Trends in Parole ADP
FY 1998-99 to FY 2001-02





DIVISION OF YOUTH CORRECTIONS

**DETAINED YOUTH
POPULATION TRENDS¹**

FY 1991-92 through FY 2001-02

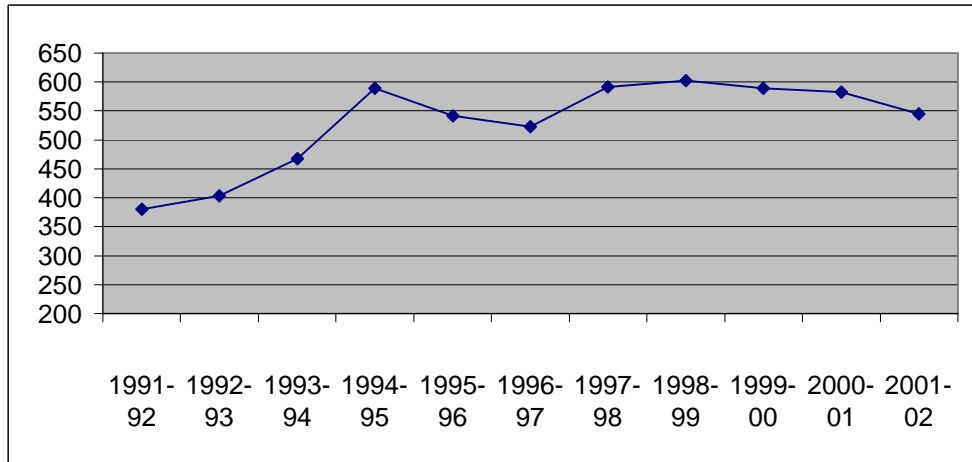
Fiscal Year	Number of Clients Served ²	Percentage Change +/-	No. of New Admissions	Percentage Change +/-	ADP	Percentage Change +/-
1991-92	6,548		11,988		380.6	
1992-93	6,820	4.2%	12,388	3.3%	403.2	5.9%
1993-94	7,800	14.4%	16,197	30.7%	467.8	16.0%
1994-95	8,807	12.9%	16,638	2.7%	589.0	25.9%
1995-96	7,870	-10.6%	13,852	-16.7%	541.5	-8.1%
1996-97	8,303	5.5%	14,652	5.8%	522.5	-3.5%
1997-98	8,785	5.8%	15,428	5.3%	591.8	13.3%
1998-99	8,924	1.6%	15,212	-1.4%	602.4	1.8%
1999-00	8,799	-1.4%	15,294	0.5%	589.1	-2.2%
2000-01	8,899	-0.3%	14,921	-1.9%	583.0	-3.2%
2001-02	-- ³	--	--	--	545.0	-7.5%

¹Contracted holding facilities are used in detention totals.

²Clients served counts are unduplicated.

³Data regarding client served and admissions for FY01-02 will be reported in the future.

Trends in Detention Average Daily Population



DIVISION OF YOUTH CORRECTIONS
DETENTION POPULATION TRENDS BY PROGRAM TYPE
FY 1998-99 through FY 2001-02

	FY 1998-99	FY 1999-00	FY 2000-01	FY 2001-02
	ADP	ADP	ADP	ADP
STATE OPERATED:				
Adams YSC	32.6	28.5	33.6	31.3
Gilliam YSC	68.4	70.3	68.5	71.7
Grand Mesa YSC	31.5	29.5	28.7	31.5
Marvin Foote YSC	67.7	67.1	77.7	79.4
Mount View YSC	85.7	64.2	63.1	54.8
Platte Valley YSC	63.6	63.0	66.0	74.2
Pueblo YSC	41.4	47.3	44.0	42.1
Spring Creek YSC	78.7	86.3	83.2	81.5
SUBTOTAL STATE OPERATED	469.5	456.1	464.6	466.5
PRIVATELY OPERATED				
Staff Secure:				
Brown Center	--	--	--	1.6
Colorado West	3.3	2.3	3.0	2.4
Dahlia Street	24.5	20.2	20.6	27.0
Gateway (Central)	1.1	1.1	0.0	--
Gateway (Southern)	1.8	1.9	1.2	1.6
Hilltop Youth Services	3.0	2.9	3.2	4.9
LaPlata Youth Services	1.2	0.4	0.0	--
Midway Shelter	6.8	8.1	8.7	8.6
Moffat County	2.0	1.1	0.1	--
Robert DeNier ¹	--	4.8	10.7	13.2
Trailhead	--	--	--	0.3
Youthtrack Alamosa	12.1	6.15	6.9	6.1
Youthtrack Fillmore	8.6	7.0	5.7	6.7
Subtotal Staff Secure	64.3	55.9	35.2	72.4
Community Accountability ² & Boot Camp	68.6	77.1	53.4	6.1
SUBTOTAL PRIVATELY OPERATED	132.9	133.0	119.5	78.5
TOTAL DETENTION	602.4	589.1	583.0	545.0

¹ Robert DeNier Youth Services Center began providing secure services in January, 2000 and is a state-owned privately operated facility.

² Prior to FY02, the Division operated the Juvenile Regimented Training Program (Boot Camp) as an additional sentencing option. This program closed during FY 2000-01. The Community Accountability Program began serving youth in April, 2002.

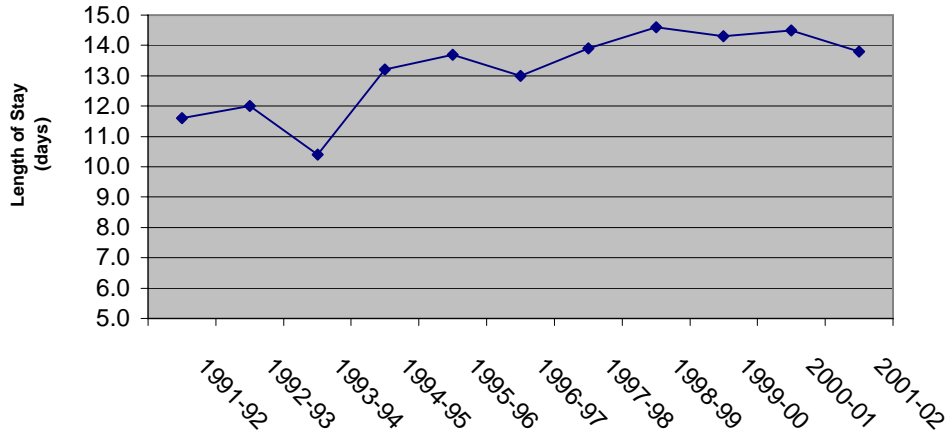
DIVISION OF YOUTH CORRECTIONS

**DETAINED YOUTH
LENGTH OF STAY (LOS) TRENDS**

FY 1991-92 through FY 2001-02

Fiscal Year	Length of Stay (days)	Percentage Change +/-
1991-92	11.6	
1992-93	12.0	3.4%
1993-94	10.4	-13.3%
1994-95	13.2	26.9%
1995-96	13.7	3.8%
1996-97	13.0	-5.1%
1997-98	13.9	6.9%
1998-99	14.6	5.0%
1999-00	14.3	-2.1%
2000-01	14.5	1.4%
2001-02	13.8	-4.8%

Length of stay for FY 2001-02 is estimated based on youth released July 1, 2001 through February 28, 2002.



Fiscal Year 2001-2002

SUPPLEMENTAL DATA REPORT



Colorado Department of Human Services
Division of Youth Corrections

Working with Colorado Communities to Achieve Justice

December 2002

This report temporarily replaces the Division's annual Management Reference Manual

This manual provides a summary of data currently available regarding DYC client populations. Due to a data system conversion, all data normally published by DYC is not available at this time. Any questions concerning the data presented in this manual may be directed to the Research and Evaluation Unit, Division of Youth Corrections, 4255 S. Knox Court, Denver, CO 80236; (303) 866-7981.

Division of Youth Corrections artwork designed by students of the Lookout Mountain Youth Services Center silkscreening vocational program.

INSERT DIRECTORS LETTER WITH SIGNATURES HERE

Vision

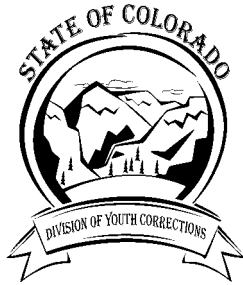
Working with Colorado Communities to Achieve Justice

Mission

The mission of the Division of Youth Corrections is to protect, restore, and improve public safety through a continuum of services and programs that:

- **Effectively supervise juvenile offenders;**
- **Promote offender accountability to victims and communities and;**
- **Build skills and competencies of youth to become responsible citizens.**

DIVISION OF YOUTH CORRECTIONS



DIVISION OF YOUTH CORRECTIONS

TABLE OF CONTENTS

EXECUTIVE SUMMARY	i
SECTION I: SUMMARY DATA	
<i>POPULATION DATA ON ALL CLIENTS.....</i>	<i>1</i>
SECTION II: COMMITMENT PROGRAM SERVICES	
3	
<i>COMMITTED YOUTH POPULATION TRENDS (1992-2002)</i>	<i>5</i>
<i>COMMITMENT POPULATION TRENDS IN LENGTH OF STAY (1992-2002) ...</i>	<i>6</i>
<i>COMMITMENT POPULATION ADP TRENDS BY PROGRAM TYPE</i>	<i>7</i>
<i>ADP TRENDS IN RESIDENTIAL PROGRAMS</i>	<i>9</i>
<i>TRENDS IN COMMITMENT LENGTH OF STAY BY PROGRAM TYPE</i>	<i>10</i>
<i>NEW COMMITMENTS BY REGION.....</i>	<i>11</i>
<i>PAROLE POPULATION TRENDS</i>	<i>12</i>
SECTION III: DETENTION PROGRAM SERVICES	
13	
<i>DETENTION POPULATION TRENDS (1992-2002)</i>	<i>15</i>
<i>DETENTION POPULATION TRENDS BY PROGRAM TYPE</i>	<i>16</i>
<i>DETENTION POPULATION LOS TRENDS.....</i>	<i>17</i>

EXECUTIVE SUMMARY

This Supplemental Data Report is designed to provide basic statistical information on youth served by the Division of Youth Corrections (DYC) during FY2001-02 and other long-term trend data. Most data provided in this report were derived through a combination of the Division's previous Client Data System and supplemental methods of collecting population data being used by the Division during the Trails verification process. A summary of key statistics provided in the report is discussed below.

I. COMMITMENT POPULATION TRENDS AND CHARACTERISTICS

- The Division experienced a surge in new commitments in FY2001-02, translating to a greater than 10% increase over last year. In FY2001-02 there were 843 new commitments to DYC, compared with 766 in the previous year. While this does represent a dramatic one-year increase, the number of new commitments this fiscal year is comparable with those in FY1998-99 and FY1999-00.
- Residential Average Daily Population (ADP) also increased, albeit at a slower rate. This increase is likely due more to increases in Length of Stay (LOS), than in new commitments.
- There was an ADP of 1,960 youth in commitment programs in FY2001-02; 1,267 in residential programs and 693 on parole.
- Thirty-four percent of the commitment residential ADP was served in state-operated commitment programs and 66% was served in contracted programs.
- The residential ADP has increased by 125% during the past ten years, outpacing the rate of increase in the number of new commitments. The number of new commitments has grown by 39% since FY1991-92.
- Sharp increases in ADP have been driven largely by increases in residential LOS. In the past 10 years average residential LOS has increased 36%, including a sharp (nearly nine percent) increase last year alone.
- Parole ADP has experienced large increases in the past, due to mandatory parole legislation. Between FY 1998-99 and FY2000-01, parole ADP increased 97% to 720.7 ADP. However, very recent changes in the length of mandatory parole (from 12 months to 9 months) have already led to decreases in parole ADP. ADP on parole for FY2001-02 was 692.9. Length of stay on parole has increased from an average of 8.2 months in FY1998-99 to a peak of 12.1 months in February of FY2001-02. This number will begin to drop as the impacts of the reduction of parole length of stay are realized. Once new LOS figures are computed for all of FY2001-02, this LOS on parole will likely be lower.

II. DETENTION POPULATION TRENDS AND CHARACTERISTICS

- The detention population has remained relatively stable over the past seven years. The average number of youth in DYC detention facilities on any given day has increased by less than one percent over the past seven years and has increased by 43% over the past 10 years, with growth rates exploding between FY1991-92 and FY1994-95. Since that time population growth has nearly stopped.
- The ADP in state-operated detention programs represented 86% of the total detention ADP; state-operated detention programs maintained an ADP of 464.4 youth in FY2001-02.
- The average length of stay (LOS) in detention facilities had been increasing steadily since FY1990-01; from 10.8 days to 14.5 days in FY2001-02. However, that LOS declined in FY2001-02 to 13.8 days.

DIVISION OF YOUTH CORRECTIONS

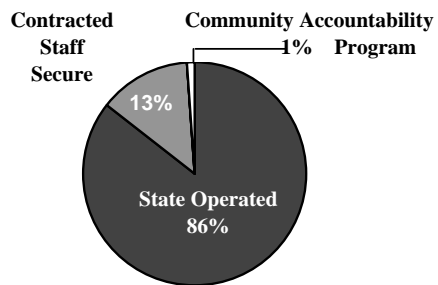
**ALL CLIENTS
POPULATION DATA**

FY 2001-02

ADP¹

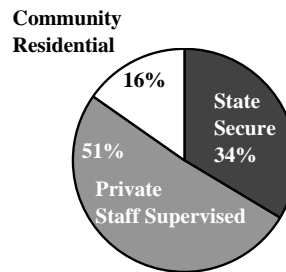
DETAINED YOUTH

State-Operated	466.4
Contracted Staff Secure	72.5
Subtotal Detained	538.9
Community Accountability ²	6.1
Total Detention	545.0



COMMITTED YOUTH

State Secure	424.9
Private Secure/Staff Supervised	648.1
Community Residential	193.8
Subtotal Committed Residential	1,266.8



PAROLE 692.9

TOTAL STATEWIDE ADP³ **2,504.7**

Numbers may not add exactly due to rounding.

¹ Average Daily Population

² This 20-bed program began serving youth February 1, 2002.



DIVISION OF YOUTH CORRECTIONS

**COMMITTED YOUTH
POPULATION TRENDS**

FY 1991-92 through FY 2001-02

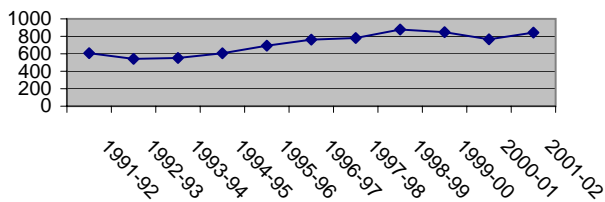
Fiscal Year	Number of Clients Served ¹	Percentage Change +/-	No. of New Commitments	Percentage Change +/-	Residential ADP ²	Percentage Change +/-
1991-92	1,599		607		563.4	
1992-93	1,637	2.4%	542	-10.7%	609.3	8.1%
1993-94	1,622	-0.9%	552	1.8%	612.5	0.5%
1994-95	1,638	1.0%	606	9.8%	633.9	3.5%
1995-96	1,769	8.0%	693	14.4%	762.9	20.4%
1996-97	1,891	6.9%	762	10.0%	929.3	21.8%
1997-98	2,046	8.2%	781	2.5%	973.5	4.8%
1998-99	2,269	10.9%	878	12.4%	1,112.2	14.2%
1999-00	2,544	12.1%	848	-3.4%	1,198.3	7.7%
2000-01	2,702	6.2%	766	-9.7%	1,251.8	4.5%
2001-02	-- ³	--	843	10.1%	1,266.8	1.2%

¹Clients served counts are unduplicated.

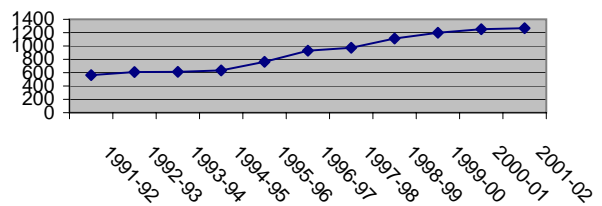
²ADP: Includes assessment, secure, staff supervised, and community residential.

³Data for number of clients served is not currently available for FY 01-02.

Trends in New Commitments



Trends in Residential ADP



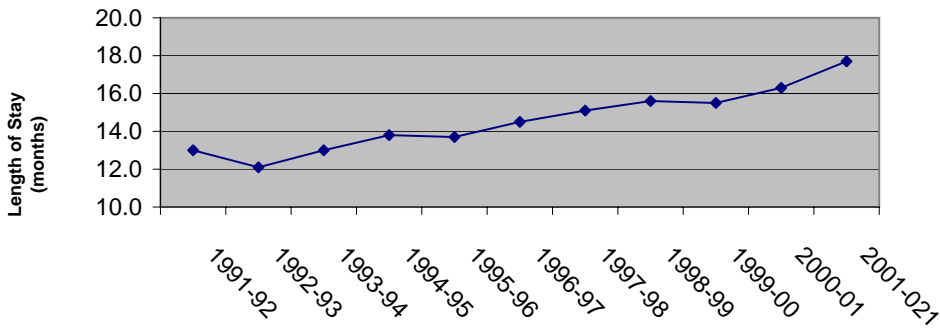
DIVISION OF YOUTH CORRECTIONS

**COMMITTED YOUTH
LENGTH OF STAY (LOS) TRENDS**

FY 1991-92 through FY 2001-02

Fiscal Year	Length of Stay (months)	Percentage Change +/-
1991-92	13.0	
1992-93	12.1	-6.9%
1993-94	13.0	7.4%
1994-95	13.8	6.2%
1995-96	13.7	-0.7%
1996-97	14.5	5.8%
1997-98	15.1	4.1%
1998-99	15.6	3.3%
1999-00	15.5	-0.6%
2000-01	16.3	5.2%
2001-02 ¹	17.7	8.6%

¹Length of stay for FY 2001-02 is estimated based on youth discharged July 1, 2001 through February 28, 2002. This figure will be updated once Trails verification is complete.



DIVISION OF YOUTH CORRECTIONS
COMMITMENT POPULATION TRENDS BY PROGRAM TYPE

FY 1998-99 through FY 2001-02

	<u>FY 1998-99</u>	<u>FY 1999-00</u>	<u>FY 2000-01</u>	<u>FY 2001-02</u>
	<u>ADP</u>	<u>ADP</u>	<u>ADP</u>	<u>ADP</u>
ASSESSMENT:				
Grand Mesa YSC	8.1	7.9	7.8	FY 2001-02 Assessment ADP figures are currently counted with state facility commitment totals. State secure facility totals (below) reflect both assessment and commitment average daily populations, combined. To facilitate comparison, the two figures have been combined and reported for previous years.
Marvin W. Foote YSC	15.7	15.6	17.6	
Mount View YSC	17.2	15.0	9.2	
Platte Valley YSC	15.0	16.6	17.3	
Spring Creek YSC	19.0	22.6	12.4	
TOTAL ASSESSMENT	75.0	77.7	65.4	
SECURE:				
	<i>(State Secure & Assessment ADP)</i>	<i>(State Secure & Assessment ADP)</i>	<i>(State Secure & Assessment ADP)</i>	
State Operated:				
Grand Mesa YSC	31.0 (39.1)	36.3 (44.2)	39.5 (47.3)	46.0
Lookout Mountain YSC	153.4 (153.4)	154.9 (154.9)	157.7 (157.7)	157.3
Marvin W. Foote YSC	13.8 (29.5)	35.1 (50.7)	37.7 (55.3)	47.6
Mount View YSC	12.6 (29.8)	28.7 (43.7)	31.9 (41.1)	42.0
Platte Valley YSC	53.6 (68.6)	55.5 (72.1)	67.1 (84.4)	77.6
Spring Creek YSC ¹	-- (19.0)	-- (22.6)	-- (12.4)	14.8
Zeb Pike YSC	39.7 (39.7)	38.9 (38.9)	39.6 (39.6)	39.5
Subtotal State Secure	304.1 (379.1)	349.4 (427.1)	373.5 (437.8)	424.9
Privately Operated:				
Brown School ²	--	--	0.8	1.7
Copper Hills	4.7	3.6	0.9	--
DAYS/Reflections	23.7	10.2	0.0	--
Foothills	24.5	24.7	23.5	22.1
Grand Prairie	32.1	31.7	29.0	30.4
Provo Canyon	22.4	15.1	10.1	10.1
Robert DeNier ³	--	3.1	11.5	13.5
Teen Quest	19.7	19.3	13.0	11.8
Youthtrack Lathrop	25.7	30.4	28.2	29.2
Youthtrack Aspen/Orient. ⁴	66.0	47.3	48.4	45.8
Subtotal Private Secure	218.8	185.4	165.4	164.6
TOTAL ASSESSMENT & SECURE	597.9	612.5	604.3	589.5

¹ Spring Creek numbers reflect assessment only in FY01-02.

² Brown School began providing commitment secure services in FY2000-01.

³ Robert DeNier Youth Services Center began providing secure services in January, 2000 and is a state-owned privately operated facility. The facility also provides assessment services.

⁴ Youthtrack Aspen began providing commitment secure services in FY2000-01 and is combined with the Youthtrack Orientation ADP figures for FY 2001-02.

DIVISION OF YOUTH CORRECTIONS
COMMITMENT POPULATION TRENDS BY PROGRAM TYPE
FY 1998-99 through FY 2001-02

	<u>FY 1998-99</u>	<u>FY 1999-00</u>	<u>FY 2000-01</u>	<u>FY 2001-02</u>
	<u>ADP</u>	<u>ADP</u>	<u>ADP</u>	<u>ADP</u>
STAFF SUPERVISED:				
Privately Operated:				
Alerntative Youth Adventures ¹	--	--	3.9	21.7
Aspen Health	30.3	31.0	25.6	3.7
Cedar Springs ²	3.0	1.0	1.2	0.0
Centennial Peaks	27.5	23.1	15.9	0.0
Colorado West	10.1	10.6	10.2	11.3
El Pueblo	9.1	11.6	14.9	9.7
Excelsior ³	--	--	1.1	3.3
Fort Logan Mountain Star	4.8	4.6	4.6	4.5
Glen Mills	40.4	32.0	8.4	1.3
Griffith Center ⁴	--	1.1	1.2	2.3
Hilltop West	11.3	10.5	10.6	11.9
Jefferson Hills Aurora	32.6	33.3	35.8	31.4
Jefferson Hills Lakewood	48.4	38.5	24.4	12.6
Ridgeview YSC ⁵	--	--	--	169.0
Rite of Passage	48.1	133.7	209.6	144.1
Sierra Vista	16.9	1.6	0.0	0.0
Youthtrack Work & Learn ⁶	--	--	11.3	15.6
Youth Services International ⁷	29.2	33.1	36.8	41.1
TOTAL STAFF SUPERVISED	311.7	365.7	415.6	483.5
TOTAL COMMUNITY				
RESIDENTIAL⁸	202.7	220.1	233.0	193.8
TOTAL RESIDENTIAL	1,112.3	978.2	1,251.8	1266.8

¹ Alternative Youth Adventures began serving youth in FY2000-01.

² Cedar Springs has begun a new contract for FY2002-03. During FY2001-02 this facility served .85 ADP under a purchase order.

³ Excelsior began serving youth in FY2000-01.

⁴ Griffith Center began serving youth in FY2000-01.

⁵ Ridge View Youth Services Center began serving youth in FY 2001-02.

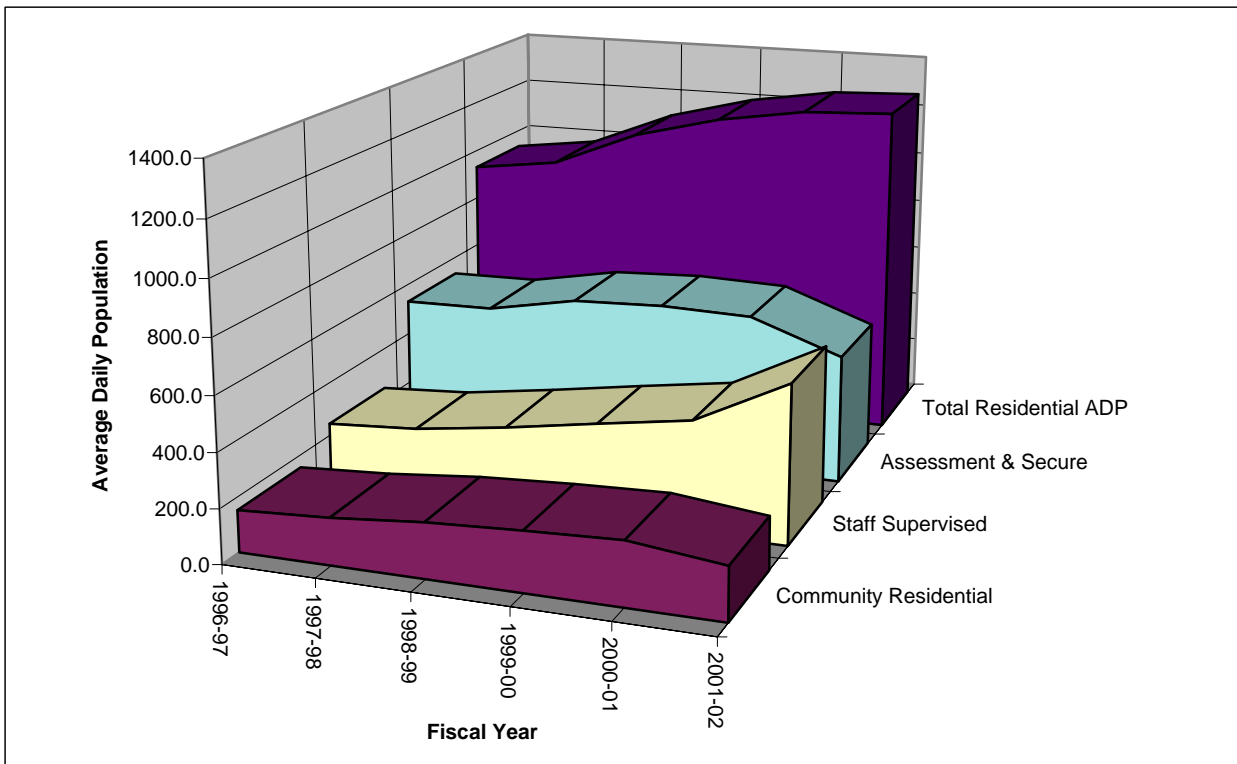
⁶ Youthtrack Work and Learn began serving youth in FY2000-01.

⁷ Includes Chamberlain, Clarinda, Forest Ridge, Springfield, Tarkio and Woodward facilities.

**DIVISION OF YOUTH CORRECTIONS
ADP TRENDS IN
RESIDENTIAL PROGRAMS**

Fiscal Years:

	1996-97	1997-98	1998-99	1999-00	2000-01	2001-02
Assessment and Secure	529.7	535.1	597.9	612.5	603.4	589.5
Staff Supervised	245.2	265.2	311.7	365.7	415.6	483.5
Community Residential	154.4	173.2	202.7	220.1	233.0	193.8
Total Residential ADP	929.3	973.5	1,112.3	1,198.3	1,251.8	1266.8



TRENDS IN COMMITMENT LENGTH OF STAY BY PROGRAM TYPE¹
FY 1998-99 through FY 2001-02

<u>Program Type</u>	<u>FY 1998-99</u>	<u>FY 1999-00</u>	<u>FY 2000-01</u>	<u>FY 2000-02¹</u>
Assessment	1.0	1.0	1.0	1.1 months
Secure/Staff Supervised	11.7	11.4	11.9	14.2 months
Community Residential	5.2	5.1	5.2	5.5 months
Total Residential	15.6	15.5	16.3	17.7 months
Total Parole	8.2	11.0	11.8	12.1 months
Total Commitment	23.6	25.8	27.9	29.1 months

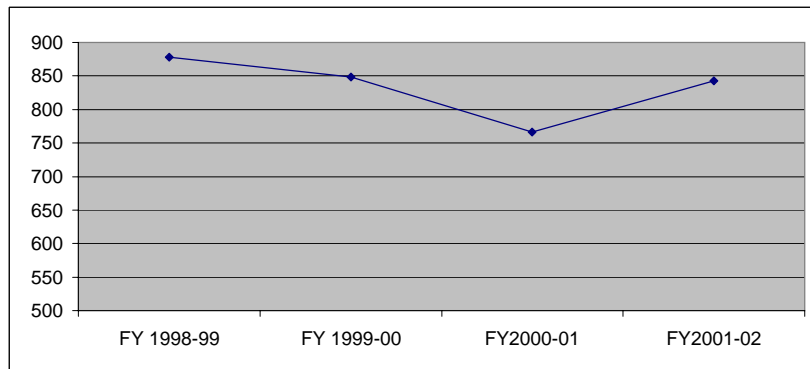
¹FY 2001-02 LOS is based on youths discharged July 1, 2001 through Feb. 28, 2002.

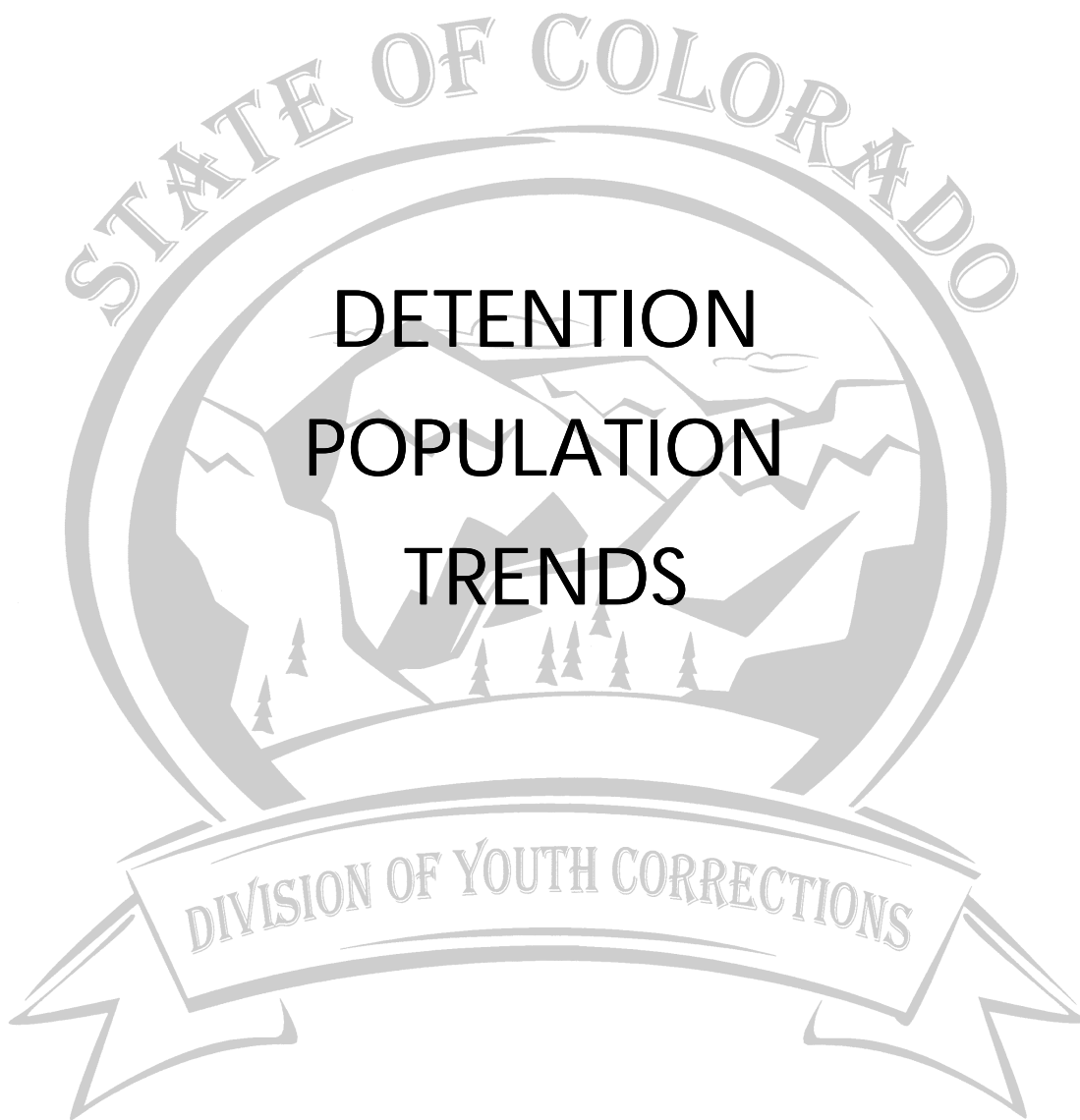
DIVISION OF YOUTH CORRECTIONS

**NEW COMMITMENT TRENDS
FY 1998-99 through FY 2001-02**

	<u>FY 1998-99</u>	<u>FY 1999-00</u>	<u>FY 2000-01</u>	<u>FY 2001-02</u>
	New Commitments	New Commitments	New Commitments	New Commitments
REGION				
Southern	202	200	158	191
Western	107	100	94	113
Denver	190	168	127	177
Central	194	172	186	177
Northeast	185	208	201	185
TOTAL	878	848	766	843

Trends in New Commitments
FY 1998-99 to FY 2001-02





DIVISION OF YOUTH CORRECTIONS

**DETAINED YOUTH
POPULATION TRENDS¹**

FY 1991-92 through FY 2001-02

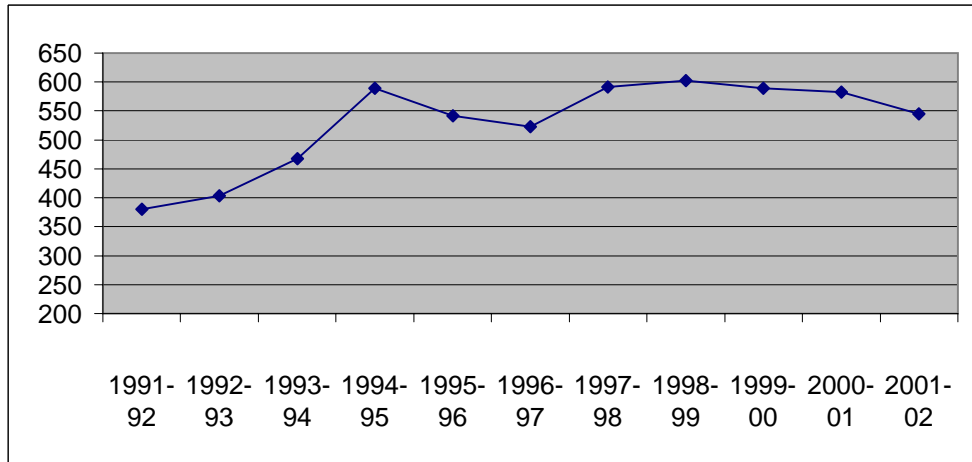
Fiscal Year	Number of Clients Served ²	Percentage Change +/-	No. of New Admissions	Percentage Change +/-	ADP	Percentage Change +/-
1991-92	6,548		11,988		380.6	
1992-93	6,820	4.2%	12,388	3.3%	403.2	5.9%
1993-94	7,800	14.4%	16,197	30.7%	467.8	16.0%
1994-95	8,807	12.9%	16,638	2.7%	589.0	25.9%
1995-96	7,870	-10.6%	13,852	-16.7%	541.5	-8.1%
1996-97	8,303	5.5%	14,652	5.8%	522.5	-3.5%
1997-98	8,785	5.8%	15,428	5.3%	591.8	13.3%
1998-99	8,924	1.6%	15,212	-1.4%	602.4	1.8%
1999-00	8,799	-1.4%	15,294	0.5%	589.1	-2.2%
2000-01	8,899	-0.3%	14,921	-1.9%	583.0	-3.2%
2001-02	-- ³	--	--	--	545.0	-7.5%

¹Contracted holding facilities are used in detention totals.

²Clients served counts are unduplicated.

³Data regarding client served and admissions for FY01-02 will be reported in the future.

Trends in Detention Average Daily Population



DIVISION OF YOUTH CORRECTIONS
DETENTION POPULATION TRENDS BY PROGRAM TYPE
FY 1998-99 through FY 2001-02

	FY 1998-99	FY 1999-00	FY 2000-01	FY 2001-02
	ADP	ADP	ADP	ADP
STATE OPERATED:				
Adams YSC	32.6	28.5	33.6	31.3
Gilliam YSC	68.4	70.3	68.5	71.7
Grand Mesa YSC	31.5	29.5	28.7	31.5
Marvin Foote YSC	67.7	67.1	77.7	79.4
Mount View YSC	85.7	64.2	63.1	54.8
Platte Valley YSC	63.6	63.0	66.0	74.2
Pueblo YSC	41.4	47.3	44.0	42.1
Spring Creek YSC	78.7	86.3	83.2	81.5
SUBTOTAL STATE OPERATED	469.5	456.1	464.6	466.5
PRIVATELY OPERATED				
Staff Secure:				
Brown Center	--	--	--	1.6
Colorado West	3.3	2.3	3.0	2.4
Dahlia Street	24.5	20.2	20.6	27.0
Gateway (Central)	1.1	1.1	0.0	--
Gateway (Southern)	1.8	1.9	1.2	1.6
Hilltop Youth Services	3.0	2.9	3.2	4.9
LaPlata Youth Services	1.2	0.4	0.0	--
Midway Shelter	6.8	8.1	8.7	8.6
Moffat County	2.0	1.1	0.1	--
Robert DeNier ¹	--	4.8	10.7	13.2
Trailhead	--	--	--	0.3
Youthtrack Alamosa	12.1	6.15	6.9	6.1
Youthtrack Fillmore	8.6	7.0	5.7	6.7
Subtotal Staff Secure	64.3	55.9	35.2	72.4
Community Accountability ² & Boot Camp	68.6	77.1	53.4	6.1
SUBTOTAL PRIVATELY OPERATED	132.9	133.0	119.5	78.5
TOTAL DETENTION	602.4	589.1	583.0	545.0

¹ Robert DeNier Youth Services Center began providing secure services in January, 2000 and is a state-owned privately operated facility.

² Prior to FY02, the Division operated the Juvenile Regimented Training Program (Boot Camp) as an additional sentencing option. This program closed during FY 2000-01. The Community Accountability Program began serving youth in April, 2002.

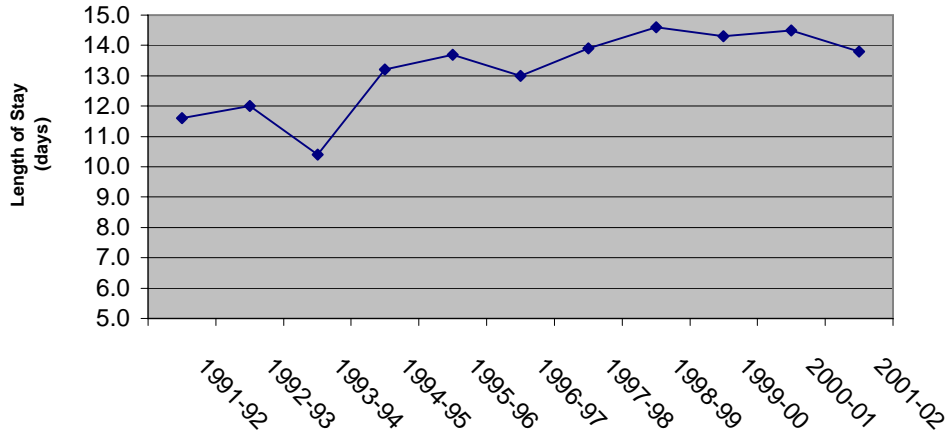
DIVISION OF YOUTH CORRECTIONS

**DETAINED YOUTH
LENGTH OF STAY (LOS) TRENDS**

FY 1991-92 through FY 2001-02

Fiscal Year	Length of Stay (days)	Percentage Change +/-
1991-92	11.6	
1992-93	12.0	3.4%
1993-94	10.4	-13.3%
1994-95	13.2	26.9%
1995-96	13.7	3.8%
1996-97	13.0	-5.1%
1997-98	13.9	6.9%
1998-99	14.6	5.0%
1999-00	14.3	-2.1%
2000-01	14.5	1.4%
2001-02	13.8	-4.8%

Length of stay for FY 2001-02 is estimated based on youth released July 1, 2001 through February 28, 2002.



II. DETENTION POPULATION TRENDS AND CHARACTERISTICS

- The detention population has remained relatively stable over the past seven years. The average number of youth in DYC detention facilities on any given day has increased by less than one percent over the past seven years and has increased by 43% over the past 10 years, with growth rates exploding between FY1991-92 and FY1994-95. Since that time population growth has nearly stopped.
- The ADP in state-operated detention programs represented 86% of the total detention ADP; state-operated detention programs maintained an ADP of 464.4 youth in FY2001-02.
- The average length of stay (LOS) in detention facilities had been increasing steadily since FY1990-01; from 10.8 days to 14.5 days in FY2001-02. However, that LOS declined in FY2001-02 to 13.8 days.