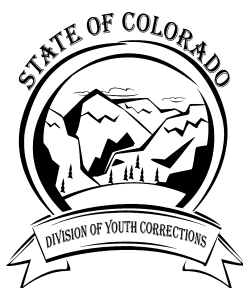


**Fiscal Year 2000-2001**

**Management Reference  
Manual**



**Colorado Department of Human Services  
Division of Youth Corrections**

---

*Working with Colorado Communities to Achieve Justice*

**December 2001**

**This manual provides the information most often requested on DYC client populations. Any questions concerning the data presented in this manual may be directed to the Research and Evaluation Unit, Division of Youth Corrections, 4255 S. Knox Court, Denver, CO 80236.**

**Director of Research and Evaluation:**

**Edward Wensuc**  
**(303) 866-7947**  
[edward.wensuc@state.co.us](mailto:edward.wensuc@state.co.us)

**Researchers:**

**Tonya Aultman-Bettridge**  
**(303) 866-7974**  
[tonya.aultmanbettridge@state.co.us](mailto:tonya.aultmanbettridge@state.co.us)

**Jonathan Sushinsky**  
**(303) 866-7924**  
[jonathan.sushinsky@state.co.us](mailto:jonathan.sushinsky@state.co.us)

**Diane Fox**  
**(303) 866-7968**  
[diane.fox@state.co.us](mailto:diane.fox@state.co.us)

**Division of Youth Corrections artwork designed by students of the Lookout Mountain Youth Services Center silkscreening vocational program.**

**The Division of Youth Corrections can be visited on the World Wide Web at:**  
<http://www.cdhs.state.co.us/dyc/Home.htm>

# STATE OF COLORADO

---

## COLORADO DEPARTMENT OF HUMAN SERVICES

### DIVISION OF YOUTH CORRECTIONS

4255 South Knox Court  
Denver, Colorado 80236  
Phone (303) 866-7345  
FAX (303) 866-7344

Stephan K. Bates  
Director



---

Bill Owens  
Governor

Marva Livingston Hammons  
Executive Director

## TO THE READER

The Division of Youth Corrections Management Reference Manual contains population information for fiscal year 2000-01. As in previous years, the Division continues to experience changes, including continued population growth in detention, commitment, and parole services, as well as changing needs of our population as a whole.

The Ridge View Youth Services Center, a 500 bed academic model program, began serving clients in July, 2001. Construction is nearing completion for a new 40-bed girls unit on the Mount View Youth Services Center campus. In addition, the design phase has been completed for a new 20-bed mental health unit at the Pueblo Mental Health Institute.

The Division also expects to begin serving youth in the new Community Accountability Program in 2002. This program will replace the Boot Camp program sentencing option phased out by the Legislature in fiscal year 2000-01.

The Division is developing a new integrated data system in conjunction with the Division of Child Welfare. This new management information system will provide more timely and complete information on client characteristics, programs and client outcomes. The new system is currently in testing phase and will be on-line in 2002.

Thank you for your interest in the Division of Youth Corrections. Additional information is available on our web site at <http://www.cdhs.state.co.us/dyc/Home.htm>.

Sincerely,

Stephan K. Bates  
Director, Division of Youth Corrections





# THE COLORADO DIVISION OF YOUTH CORRECTIONS

## VISION

*"Working with Colorado Communities to Achieve Justice."*

## MISSION

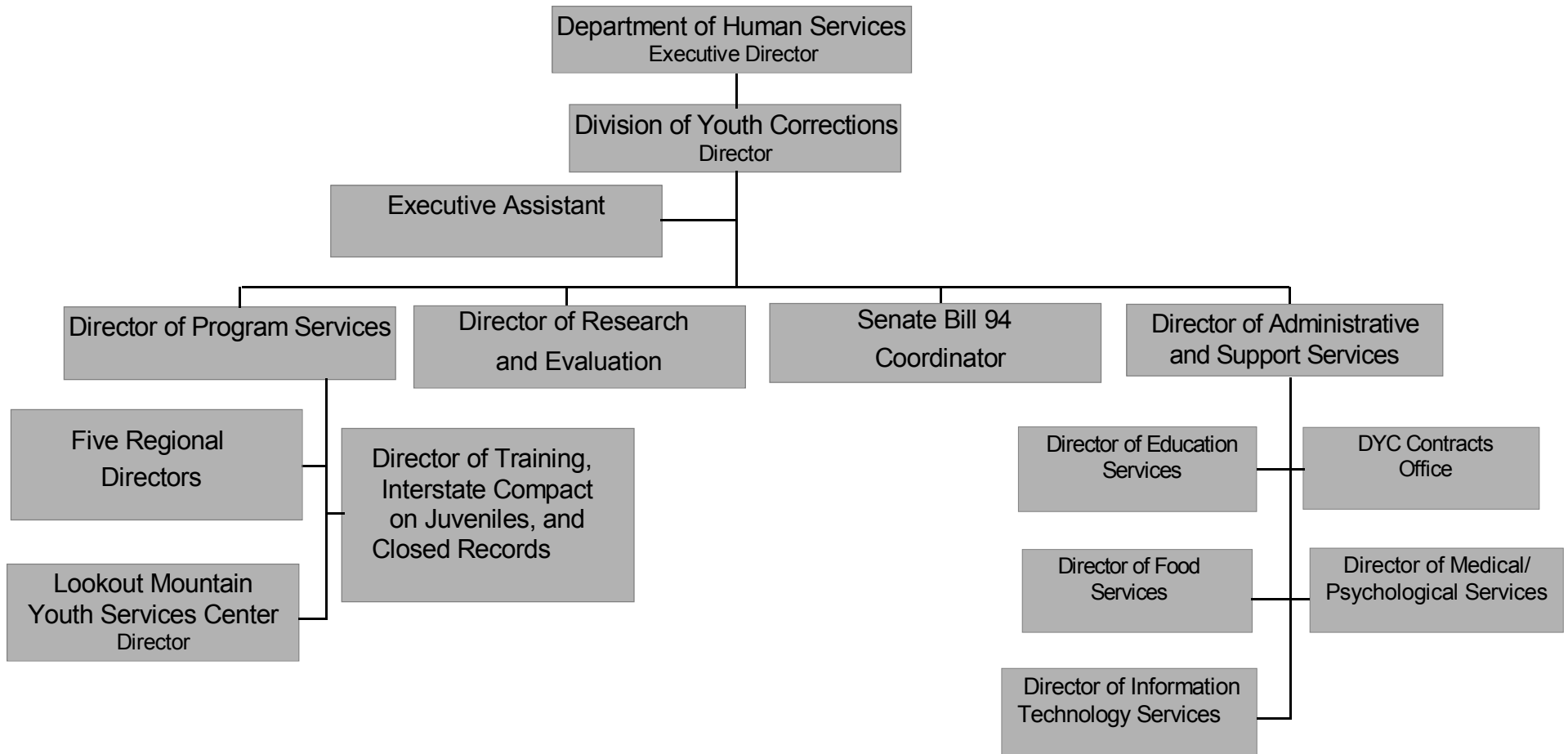
The mission of the Division of Youth Corrections is to protect, restore, and improve public safety through a continuum of services and programs that:

- Effectively supervise juvenile offenders;
- Promote offender accountability to victims and communities, and;
- Build skills and competencies of youth to become responsible citizens.

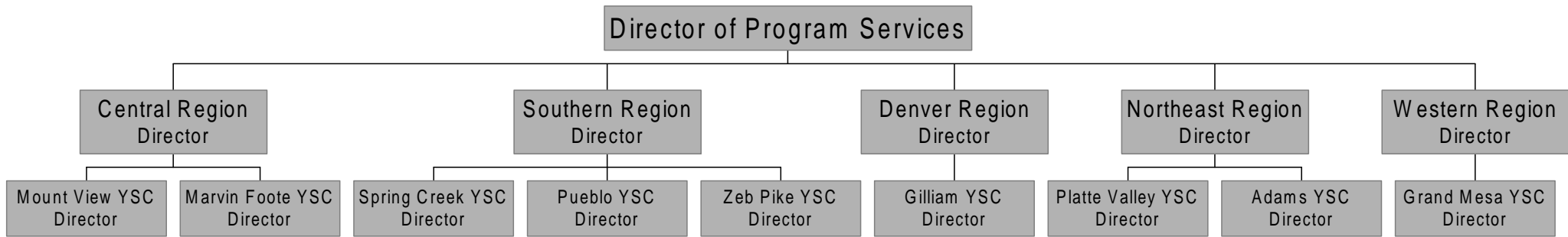




# Division of Youth Corrections Organizational Flowchart



**Colorado Department of Human Services  
Division of Youth Corrections  
Regional Management Structure**







# DIVISION OF YOUTH CORRECTIONS

## TABLE OF CONTENTS

<b>GLOSSARY OF TERMS USED</b> .....	<b>ii</b>
<b>EXECUTIVE SUMMARY</b> .....	<b>viii</b>
<b>SECTION I: COLORADO STATE TOTALS</b>	
<i>FILTERING PROCESS TO COMMITMENT</i> .....	3
<i>FILTERING PROCESS TO DETENTION</i> .....	4
<i>POPULATION DATA ON ALL CLIENTS</i> .....	5
<b>SECTION II: COMMITMENT PROGRAM SERVICES</b>	
<i>COMMITMENT POPULATION TRENDS (1989-2000)</i> .....	7
<i>COMMITMENT POPULATION TRENDS BY PROGRAM TYPE</i> .....	9
<i>TRENDS IN COMMITMENT ADP BY PROGRAM TYPE</i> .....	11
<i>TRENDS IN COMMITMENT LENGTH OF STAY BY PROGRAM TYPE</i> .....	12
<i>POPULATION TRENDS BY SENTENCE AND COMMITMENT TYPE</i> .....	13
<i>POPULATION TRENDS BY COMMITMENT CLASSIFICATION SCORES</i> .....	14
<i>PAROLE POPULATION TRENDS AND CHARACTERISTICS</i> .....	16
<i>COLORADO JUVENILE COMMITMENT RATES BY MAJOR COUNTIES</i> .....	17
<i>DEMOGRAPHIC TRENDS</i> .....	18
<i>COMMITMENT POPULATION CHARACTERISTICS BY GENDER</i> .....	19
<b>SECTION III: DETENTION PROGRAM SERVICES</b>	
<i>DETENTION POPULATION TRENDS (1989-2000)</i> .....	22
<i>DETENTION POPULATION TRENDS BY PROGRAM TYPE</i> .....	24
<i>COLORADO JUVENILE DETENTION RATES BY MAJOR COUNTIES</i> .....	25
<i>DEMOGRAPHIC AND OTHER CHARACTERISTICS</i> .....	26
<i>DETENTION POPULATION CHARACTERISTICS BY GENDER</i> .....	28
<b>SECTION IV: REGIONAL SUMMARIES</b>	
<i>DENVER REGION</i> .....	31
<i>CENTRAL REGION</i> .....	34
<i>SOUTHERN REGION</i> .....	39
<i>NORTHEAST REGION</i> .....	44
<i>WESTERN REGION</i> .....	49



## Glossary of Terms Used

**Disclaimer:** These definitions are provided for quick reference purposes only. Please refer to the Colorado Revised Statutes for more complete definitions of legal categories and conditions.

**Adjudication** – The result of an adjudicatory hearing in which the court determines that it has been proven beyond a reasonable doubt that a juvenile has committed a delinquent act or that a juvenile has pled guilty to committing a delinquent act.

**Aggravated Offender (Sentence Type)** – see *Sentencing Special Offenders*.

**Assessment** - There are five regional assessment locations where youth committed to DYC are assessed to determine youth's classification level and needs for appropriate placement and program referral.

**Assessment LOS** (Length of Stay) - The average amount of time spent in assessment for youth discharged from DYC during the reporting period. Statutorily, the assessment period must be completed within 30 days of a youth's commitment.

**Average Daily Caseload (ADC)** - The average number of youth active on parole during the time period. Youth on parole who were on escape status during the time period are not included.

**Average Daily Population (ADP)** - The average number of youth present in a facility or program during the reporting period.

**Boot Camp Sentence** - A court imposed sentence to the Regimented Juvenile Training Program (RJTP) as a condition of probation. The sentence includes a 60-day military style residential program followed by an aftercare program on supervised probation. The RJTP ended (due to a sunset provision in the statute) as of June, 2001. It will be replaced by the *Community Accountability Program* in fiscal year 2001-02.

**Community Accountability Program** – Youth can be sentenced to the Community Accountability Program (CAP) as a condition of probation, replacing the previous Boot Camp Sentence. The sentence includes a 60-day residential program focusing on restorative justice and youth skill development. The residential phase will be followed by an intensive aftercare program for 120 days or until the period of probation expires. The aftercare phase, also based on a restorative justice model, will focus on continued service delivery to youth and families as well as reintegration into the community.

**Clients Served: Commitment** - The total number of youth served in a particular program during the reporting period. Total clients served in a given category (e.g. secure, staff secure, or community) represents unduplicated counts of clients served in those categories. Since youth can be served in more than one type of program in the course of a year, the total clients served in a particular category will not equal the sum of the clients served in each program.

**Clients Served: Detention** - The total number of youth served in a particular program during the reporting period. Total clients served in a facility or program (e.g. Adams YSC, Boot Camp, or staff secure detention) represents unduplicated counts of clients served in those facilities. Since the same youth can have multiple admissions to detention and be served in more than one particular facility in the course of a year, the total clients served in all facilities will not equal the sum of the clients served in each facility.

**Commitment** - Commitments are dispositions of juvenile cases resulting in the transfer of legal custody to the Department of Human Services by the court as a result of an adjudicatory hearing on charges of delinquent acts committed by the youth.

**Commitment Classification** - An objective commitment classification instrument is administered during assessment to guide the placement decisions concerning the type of commitment program most suitable for individual youth given the severity of their commitment offense coupled with the risk of reoffending.

**Commitment LOS** – see **Total Commitment LOS**

**Commitment Programs** - Youth can participate in any or all of six components of the DYC Commitment Program: Assessment, Orientation, Secure Programs, Staff Secure Programs, Community Programs, and Parole.

**Commitment Sentences** - Juveniles who have been adjudicated delinquent and committed to the Division of Youth Corrections can be given either nonmandatory or mandatory sentences. Mandatory sentences require that a youth spend a specified minimum amount of time in out-of-home placement and can include repeat and violent offenders. Juveniles can also be sentenced as aggravated offenders (see *C.R.S. 19-2-601*).

**Community LOS** - The average amount of time spent in community programs for youth discharged from DYC during the reporting period.

**Community Residential** - DYC contracts with a number of private vendors to provide community-based programs to youth presenting the lowest risk of reoffending and youth transitioning from more secure programs. These programs include both group residential care and foster care programs.

**Concurrent Sentence** - A recommitment sentence which runs simultaneous to the original commitment sentence.

**Consecutive Sentence** - A recommitment sentence which runs consecutive to the original sentence.

**Contempt Sentence** - A detention sentence can be applied for failure to obey a court's lawful orders. Sentences are applied to youth who have disobeyed a court order, or acted disruptively or inappropriately in court.

**Court Order Detention Hold** - Detention holds resulting from a court order pending adjudication, disposition, evaluation or other action. Decision to hold generally reflects reasonable evidence to believe that juvenile may be in danger to him/herself, or to the community.

**Courtesy Detention Hold** - Temporary detention holds for other agencies such as immigration or pending transfer to other agencies.

**Delinquent Sentence** – (see also *703H Sentence*) Court imposed sentence to detention for delinquent act, when youth is not under probation supervision.

**Detention** - The custodial status of youth who are being confined after arrest or while awaiting the completion of judicial proceedings. Detention facilities hold youth who are awaiting trial, serving detention sentences or awaiting commitment placement (either institutional or community based).

**Detention Admission** - Each admission to detention for temporary custody of youth is tracked under the admission category. In contrast to unduplicated counts of clients served in detention, one youth can have multiple admissions for a single incident. For example, if a youth is admitted to detention on a pretrial basis (preadjudicated) and released, a later sentencing to detention on the original charge would count as a separate admission even though it is the same youth and the same incident. Likewise, if the youth serves the sentence on weekends, each weekend admission counts as a separate admission.

**Detention Intake** – A youth who is temporarily in the physical custody of a detention facility either pending release or transport but who is not admitted and placed in contact with the general detention population is considered an “intake” but not an admission.

**Detention Sentence** - The court imposed sanction of confinement to a detention facility or boot camp as a result of an adjudicatory hearing which determined that a delinquent act had been committed. Major sentence types include probation sentences, traffic sentences, handgun sentences, municipal sentences, game and fish sentences, contempt sentences, and 703H sentences (non-probation sentences for a delinquent act; see *Delinquent Sentence*).

**Game-Fish Sentence** - Court imposed detention sentence for violation of game and fish ordinances.

**Handgun Sentence** - Court imposed detention sentence for the crime of juvenile possession of a handgun.

***Interrupted Detention Hold*** - Detention hold in partial fulfillment of a court imposed detention sentence. The most common instance is a sentence served over two or more weekends.

***Interstate Compact on Juveniles (ICJ)*** - An agreement between eligible jurisdictions in the United States and its territories which provides the means for these jurisdictions to function cooperatively in the return of escapees and absconders. ICJ includes the cooperative supervision of parolees between states.

***Length of Stay (LOS): Commitment*** - There are several variations of the length of stay measure. All commitment LOS figures are measured in months and are calculated for those youth who spent time in the program for which LOS is reported (e.g., secure) prior to discharge from NYC custody (including either residential or nonresidential parole supervision).

***Length of Stay (LOS): Detention*** - The amount of time spent in a detention facility or program during the time period. All detention LOS figures are measured in days.

***Mandatory Sentence Offender***- see *Sentencing Special Offenders*.

***Municipal Sentence*** - Court imposed detention sentence for violation of municipal ordinances.

***New Commitment*** - Commitment of youth who were not previously committed, or who were previously committed but had been discharged from NYC rolls.

***Nonmandatory Sentences*** - These sanctions involve no minimum out-of-home sentence length, and the maximum sentence length cannot exceed 24 months.

***Orientation Program*** - The goal of this 45-75 day privately- operated program housed at the Lookout Mountain Youth Services Center is to prepare committed youth for their next commitment placement. The program focuses on improving youths' attitudes in working with peers and adults and fostering a willingness to change. This component of the NYC Commitment Program opened on July 1, 1996. Beginning in FY 2001-02, this program will change, to a 26-bed orientation program for youth being committed to Lookout Mountain Youth Services Center, and a 26-bed short-term program.

***Parole*** - The status of an offender conditionally released from a residential setting by discretion of the juvenile parole board prior to expiration of Commitment or upon expiration of commitment. While on parole a youth is placed under the supervision of a parole officer and required to observe conditions of release set by parole officer and the Juvenile Parole Board.

***Parole LOS*** -The average amount of time spent on parole for youth discharged from NYC during the reporting period.

**Parole Revocation** - The administrative action of the juvenile parole board which removes a youth from parole status in response to a violation of lawfully required conditions of parole, including the prohibition against commission of a new offense. Further parole hearings are scheduled at the discretion of the youth's client manager.

**Parole Suspension** - The administrative action of the juvenile parole board which removes a youth from parole status in response to a violation of lawfully required conditions of parole, including the prohibition against commission of a new offense. Reconsideration of parole must occur within 90 days on a date determined by the parole board.

**Parole Violation** – Actions by a parolee that do not conform to the conditions of parole.

**Preadjudicated** - The legal status of youth pending delinquency adjudication decisions. Often these youth are referred to as pre-trial youth since they are generally admitted pending some court action. This category also includes youth who are serving a sentence, such as probation, on a prior delinquency adjudication and who are in detention pending a new court action.

**Privately Operated Programs** - Detention or commitment programs which are administered by a private entity through a contract with the state. Privately operated programs can be administered in privately owned or state owned facilities.

**Prior Adjudications** - Adjudications which occurred prior to the current detention or commitment event.

**Prior Out-of-home Placements** - Placements in a Social Services residential program or other treatment program for an extended period prior to commitment.

**Probation Sentence** - A court imposed detention sentence as a condition of probation or as a violation of the terms and conditions of probation.

**Recommitment** - An additional commitment imposed by the court on a youth who has not yet been discharged from DYC rolls.

**Repeat Offender** - see *Sentencing Special Offenders*

**Regional Management Structure** - Decentralized DYC management structure comprised of five geographic regions in the state.

**Residential Programs** - Programs that provide 24-hour care.

**Residential LOS** - is the average amount of time spent in all residential programs (assessment, orientation, secure, staff secure, and community programs) for youth discharged from DYC during the reporting period.

**Return Commitment** – Used to describe detention stays of youth who were previously committed to the Department of Human Services and who have not yet been discharged. The reasons for admission into a detention center vary for these youth. The most common reasons include awaiting court action on new offenses, awaiting placement into a commitment program following a court or community review board decision, or awaiting a parole board action on a suspension or revocation hearing.

**Runaway Detention Hold** - Detention holds due to runaway from home or placement, or out-of-state runaways.

**703H Sentence** – (see also *Delinquent Sentence*) Court imposed sentence to detention for delinquent act, when youth is not under probation supervision.

**Sentencing Special Offenders** (see Section 19-2-908, C.R.S.)

- a. **Mandatory Sentence Offender** – *These sanctions specify* a minimum time period of up to 24 months or less during which a youth must be in an out-of-home placement.
- b. **Repeat Offender (Sentence Type)** - A 'repeat' sentence type can be imposed on a juvenile who has been previously adjudicated a juvenile delinquent and is adjudicated a juvenile delinquent for a delinquent act that constitutes a felony or if his or her probation is revoked for a delinquent act that constitutes a felony. The court may or may not designate a minimum sentence length.
- c. **Violent Offender (Sentence Type)** - A juvenile may be sentenced as a violent offender if he or she is adjudicated a juvenile delinquent for a delinquent act that constitutes a crime of violence as defined in section 16-11-309(2), Colorado Revised Statutes.
- d. **Aggravated Offender (Sentence Type)** – These sanctions specify a time period of three to seven years during which time a youth must remain in the custody of the Department of Human Services. Contingent upon court approval, youth may be eligible for non-secure placement, parole, or transfer to the Department of Corrections (adult corrections).

**Situational Detention Hold** - Temporary detention hold pending transportation or release to a parent or guardian.

**Social Service Detention Hold** - Temporary detention hold for youth under Social Services supervision pending evaluation, placement or other court decision.

**Staff Secure Programs** – Privately-operated staff secure programs provide 24-hour line-of-sight supervision of youth.

**State Operated Programs** - Detention or commitment programs which are administered by DYC employees in DYC owned facilities.

**Total Commitment LOS** - The average amount of time in DYC custody (sentence start date to discharge date including parole) for all youth discharged from DYC during the reporting period.



**Traffic Sentence** - Court imposed detention sentence due to violation of traffic ordinances.

**Violent Offender (Sentence Type)** – see *Sentencing Special Offenders*



## **EXECUTIVE SUMMARY**

The Management Reference Manual is designed to provide statistical information on youth served by the Division of Youth Corrections (DYC) during FY2000-01 and other trend data. Section I contains statewide population statistics while Sections II and III provide detailed population statistics describing the commitment and detention program services, respectively. Section IV contains population statistics for each of the Division's management regions. Trends in population data and client demographic characteristics are included in each section. Unless otherwise noted, all data for this report are extracted from the DYC Client Data System. A summary of key statistics provided in the report is discussed below.

### **I. STATE TOTALS**

#### **A. Juvenile Justice Filtering Process to Commitment**

- There were 58,560 juvenile arrests during 2000, representing 11.7% of the 10-17 year old population in Colorado.
- There were 16,986 juvenile filings during FY2000-01 representing 3.4% of the 10-17 year old population in Colorado.
- There were 7,164 probation intakes during FY2000-01 representing 1.4% of the 10-17 year old population in Colorado.
- The proportion of the juvenile population committed to detention or committed has remained relatively stable since FY1994-95. However, the proportion of juveniles in commitment is slightly lower than in previous years and is at its lowest point since FY1994-95. The proportion of youth in detention is also slightly lower than previous years, and is currently at its lowest point in 10 years.

#### **B. Clients Served<sup>1</sup>**

- There were 10,339 unduplicated youth served in DYC programs during fiscal year 2000-01; 8,899 youth in detention programs and 2,263 youth served in commitment programs. (Clients served in detention and commitment programs cannot be summed as per footnote below).
- There were 1,505 youth served on parole during the fiscal year.

#### **C. DYC Population Summary**

- There was an average daily population (ADP) of 2,556 youth in all DYC programs including detention (583), commitment residential (1,252), and parole (721) during FY2000-01.
- There were 14,921 detention admissions and 766 new commitments in FY2000-01.

---

<sup>1</sup> Clients served represents the total number of youth served in a particular program during the reporting period. Total clients served in a given category (e.g. detention or commitment programs) represents unduplicated counts of clients served in those categories. Since youth can be served in more than one type of program in the course of a year, the total clients served in a particular category will not necessarily equal the sum of the clients served in each program.

## II. COMMITMENT POPULATION TRENDS AND CHARACTERISTICS

### A. Population Trends

- More youth were in commitment programs this fiscal year, compared to FY1999-00. This is likely due to an increase in the average length of stay. In FY1999-00, youth spent an average of 15.5 months in residential placement and 11 months on parole. This year, youth spent nearly one month more time (16.3 months) in residential placement and nearly one month more (11.8 months) on parole.
- While the number of new commitments increased every year between FY1992-93 and FY 1998-99, the number decreased for the first time last fiscal year. This decreasing trend in new commitments has continued at an even more dramatic rate. In FY2000-01, new commitments decreased by 10 percent.
- There was an ADP of 1,973 youth in commitment programs in FY2000-01; 1,252 in residential programs and 721 on parole.
- Thirty-five percent of the commitment residential ADP was served in state-operated commitment programs and 65 percent was served in contracted programs.
- The residential ADP has increased by 131 percent during the past ten years, outpacing the rate of increase in the number of new commitments. The number of new commitments has grown by 41 percent since FY1990-91. In addition, new commitments decreased for the second year in a row in FY2000-01.
- Parole ADP continues to experience large increases, due to mandatory parole legislation. Since FY1998-99, parole ADP has increased 97 percent to 720.7 ADP in FY2000-01. Length of stay on parole has increased from an average of 8.2 months in FY1998-99 to 11.8 months in FY2000-01.

### B. Population Characteristics

#### 1. Gender

- Eighty-eight percent of new commitments in FY2000-01 were male. New commitments have decreased for both males (12%) and for females (18%) since FY1998-99.
- In FY2000-01 the ADP of females decreased slightly, while the ADP of males increased somewhat. The average daily population of females has grown by 9 percent since FY1998-99. The male average daily population has grown by approximately 13 percent during the same time period. This represents a change from previous years, where proportional increases in female ADP have been much greater than those for males.
- Residential length of stay has been increasing for both males and females. However, the length of stay for females has increased at a greater rate (13%) than for males (3%). This has led to a decrease in differences in LOS by gender. Males discharged from custody during FY1998-99 had spent an average of 3.3 months longer in residential programs compared to females. In FY2000-01 males spent an average of 2.2 months longer in residential placement.

## **2. Ethnicity**

- Anglo-American youth (51%) have consistently represented the largest single ethnic group in residential programs followed by Hispanic/Latino youth (35%) and African American youth (11%).

## **3. Age<sup>2</sup>**

- The average age of youth at commitment in FY2000-01 was 16.4 years. This figure has remained stable for the past three years in the DYC population. Average age for males (16.5 years) and for females (16.2) has also remained relatively unchanged over time.
- As has been the case in previous years, Seventeen-year-olds were the largest single age group entering DYC commitment programs in FY2000-01.

## **4. Other Characteristics**

- The proportion of new commitments sentenced as mandatory offenders in FY2000-01 (26%) was the same as last fiscal year (26%). These proportions, however, are lower than previous years. Fifty percent of new commitments were sentenced as mandatory offenders in FY 1998-99.
- The average age at first adjudication among new commitments was 14.1 years. Similar to age at commitment, this has been stable over the past three years.
- Fifty nine percent of new commitments had been placed out-of-home at least twice prior to commitment. (Eighty one percent had one or more out-of-home placements).
- Similar to previous years, prior out-of-home placements have varied significantly by gender. In FY2000-01 a higher proportion of females (79%) had two or more prior out-of-home placements than males (57%).
- Sixty one percent of new commitments had a history of running away during the 12 months prior to being committed. This also varied dramatically by gender, with 82 percent of newly committed females having a history of running away prior to commitment, compared to 58 percent of males.
- Just over half (51%) of new commitments were identified during assessment as in need of substance abuse treatment services.
- Seventy-seven percent of new commitments had at least one previous adjudication prior to their current commitment.
- Forty-five percent of newly committed youth were committed for property offenses and 38 percent for person offenses. The remaining newly committed youth were committed for drug offenses (5%), weapons offenses (3%), and other offenses (9%).
- Sixty-four percent of newly committed youth were sentenced for felony level offenses.
- Approximately 66 percent of youth discharged from parole during FY 2000-01 were working or in school.

---

<sup>2</sup> Average age at commitment has been recalculated for the past three years and is slightly higher than figures reported in previous manuals. In prior years these calculations were based on discrete (e.g., 16 years) values for age and are now based on continuous (e.g., 16.487) values.

### III. DETENTION POPULATION TRENDS AND CHARACTERISTICS

#### A. Population Trends

- Trends in DYC detention populations have been similar to those of committed youth. The average number of youth in DYC detention facilities on any given day has increased by 56 percent over the past 10 years. The detention ADP, however, has decreased slightly for the past two years.
- The ADP in state-operated detention programs represented 80 percent of the total detention ADP; state-operated detention programs maintained an ADP of 464.6 youth in FY2000-01.
- The average length of stay (LOS) in detention facilities has been increasing steadily since FY1990-01; from 10.8 days to 14.5 days.
- The detention ADP has increased by 56 percent during the past ten years, outpacing the rate of increase in the number of detention admissions. This is most likely due to increases in length of stay.

#### B. Population Characteristics

##### 1. Gender

- Males made up 82 percent of new admissions and 83 percent of the ADP in detention facilities in FY2000-01
- While length of stay in detention has decreased slightly in the past three years for males, LOS for females has increased. In FY2000-01 males spent an average of 15.3 days in detention, compared to 11.7 days for females.

##### 2. Ethnicity

- Anglo-American youth (44%) have consistently represented the largest single ethnic group in DYC detention facilities, followed by Hispanic/Latino youth (38%), and African-American youth (15%).

##### 3. Age<sup>3</sup>

- The average age at detention admission has remained stable at 16.0 years for the past three years.
- Twenty-nine percent of youth admitted to detention were 17 years old and 25 percent were 16 years old.

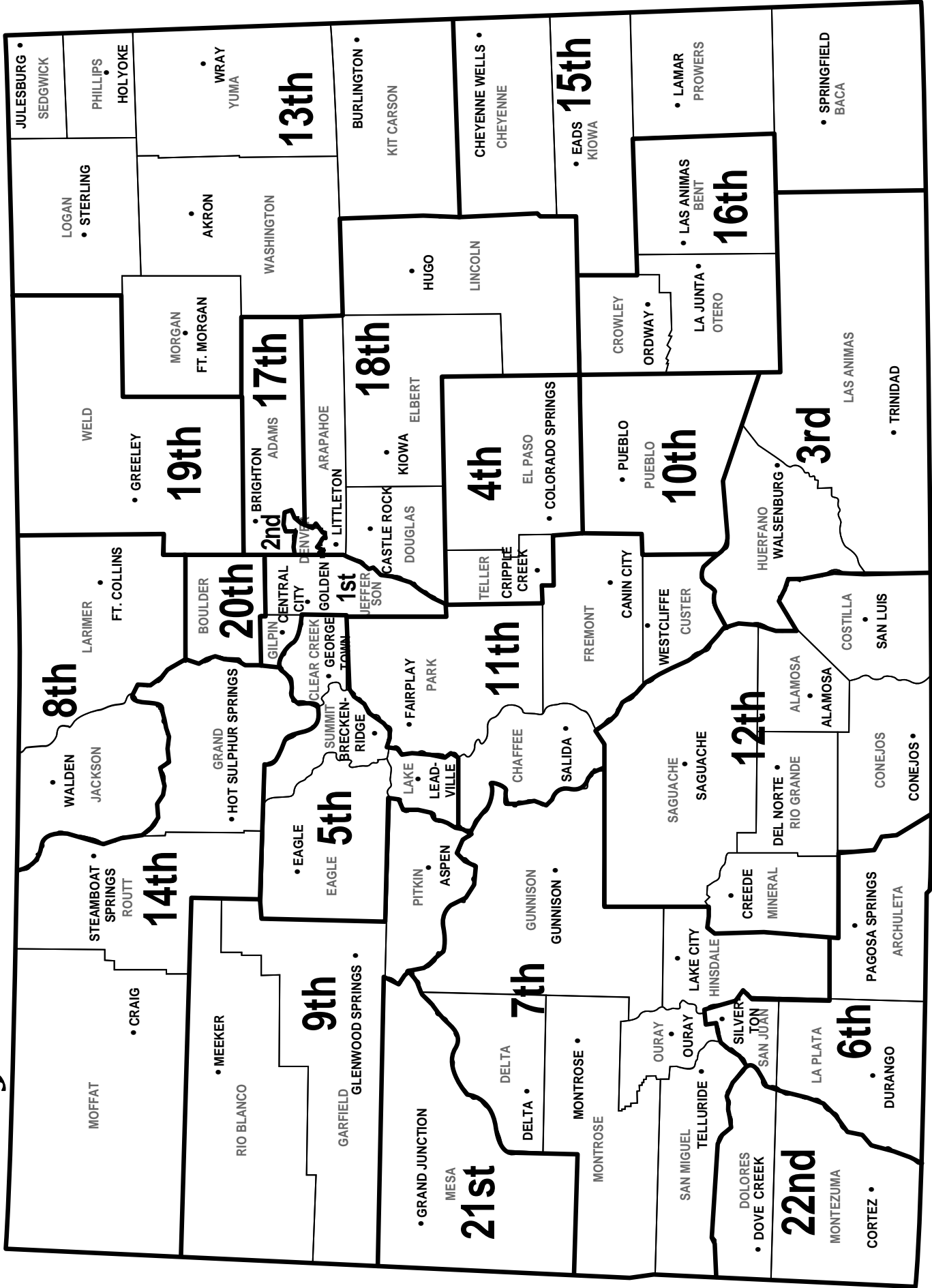
##### 4. Reasons Held/Legal Status

- Eighty percent of the detention ADP during FY1998-99 was admitted due to court (48%) or police (32%) action.
- Seventy percent of the detention ADP was preadjudicated, followed by sentenced (20%) and committed (11%).

---

<sup>3</sup> Average age at detention admission has been recalculated for the past three years and is slightly higher than figures reported in previous manuals. In prior years these calculations were based on discrete (e.g., 16 years) values for age and are now based on continuous (e.g., 16.487) values.

# Judicial Districts of Colorado





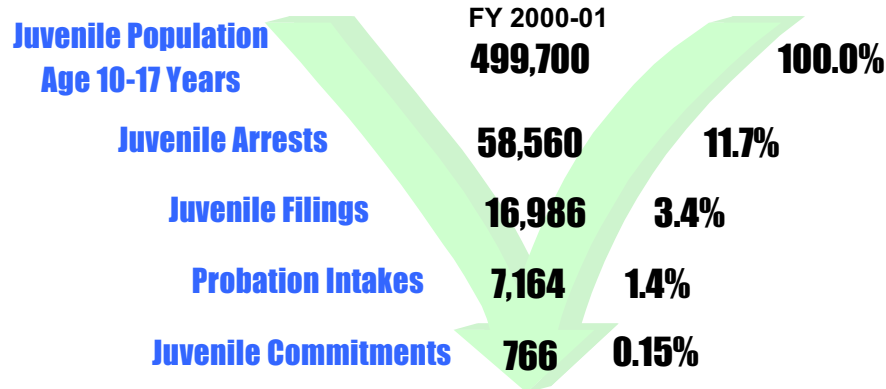




SECTION I

COLORADO STATE TOTALS

# JUVENILE JUSTICE FILTERING PROCESS TO COMMITMENT



	FY1991-92	FY1992-93	FY1993-94	FY1994-95	FY1995-96	FY1996-97	FY1997-98	FY1998-99	FY1999-00	FY2000-01
Age 10-17 Population <sup>1</sup>	384,346	400,127	415,411	429,944	443,342	456,253	468,034	478,275	489,748	499,700
Juvenile Arrests <sup>2</sup>	54,626	53,595	55,012	56,199	59,884	60,755	70,710	69,650	60,366	58,560
Arrests as % of population	14.2%	13.4%	13.2%	13.1%	13.5%	13.3%	15.1%	14.6%	12.3%	11.7%
Juvenile Delinquency Filings <sup>3</sup>	12,718	11,911	12,570	15,175	17,577	19,063	19,214	18,395	17,769	16,986
Filings as % of Arrests	23.3%	22.2%	22.8%	27.0%	29.4%	31.4%	27.2%	26.4%	29.4%	29.0%
Number of Probation Intakes	6,377	6,669	6,858	7,174	7,201	7,753	8,694	8,607	7,650	7,164
Intakes as % of Filings	50.1%	56.0%	54.6%	47.3%	41.0%	40.7%	45.2%	46.8%	43.1%	42.2%
Number of Commitments <sup>4</sup>	607	542	552	606	693	762	781	878	848	766
Commitments as % of Intakes	9.5%	8.1%	8.0%	8.4%	9.6%	9.8%	9.0%	10.2%	11.1%	10.7%
Commitments as % of Population	0.16%	0.14%	0.13%	0.14%	0.16%	0.17%	0.17%	0.18%	0.17%	0.15%

<sup>1</sup>Colorado State Department of Local Affairs. Population data are reported for calendar years. Population data for 1990 are based upon the 1990 census and population data for 1991-2000 are projected from the 1990 data. Population estimates for the years 1990 through 2000 have been revised and may not match figures reported in the Management Reference Manual in prior years. (<http://www.dlg.oem2.state.co.us/demog/datalist.htm>)

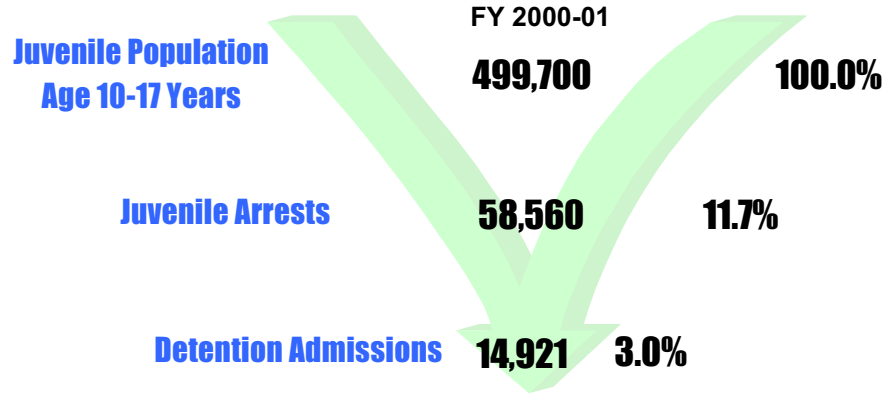
<sup>2</sup>Colorado Bureau of Investigation, 'Uniform Crime Report,' 1990 thru 1999 calendar years. ([http://cdpsweb.state.co.us/cbi/docs\\_reports.htm](http://cdpsweb.state.co.us/cbi/docs_reports.htm))

<sup>3</sup>Includes only Delinquency and CHINS (CHINOS) filings and new cases on probation supervision.

Colorado Judicial Branch Annual Report Statistical Supplement: Fiscal Years 1990-91 thru 1999-00

<sup>4</sup>Includes only new commitments. Division of Youth Corrections.

## JUVENILE JUSTICE FILTERING PROCESS TO DETENTION



	FY1991-92	FY1992-93	FY1993-94	FY1994-95	FY1995-96	FY1996-97	FY1997-98	FY1998-99	FY1999-00	FY2000-01
Age 10-17 population <sup>1</sup>	384,346	400,127	415,411	429,944	443,342	456,253	468,034	478,275	489,748	499,700
Juvenile Arrests <sup>2</sup>	54,626	53,595	55,012	56,199	59,884	60,755	70,710	69,650	60,366	58,560
Arrests as % of population	14.2%	13.4%	13.2%	13.1%	13.5%	13.3%	15.1%	14.6%	12.3%	11.7%
Detention Admissions	11,988	12,388	16,197	16,638	13,858	14,652	15,428	15,212	15,212	14,921
Admissions as % of Arrests	21.9%	23.1%	29.4%	29.6%	23.1%	24.1%	21.8%	21.8%	25.2%	25.5%
Admissions as % of Population	3.1%	3.1%	3.9%	3.9%	3.1%	3.2%	3.3%	3.2%	3.1%	3.0%

<sup>1</sup> Colorado State Department of Local Affairs. Population data are reported for calendar years. Population data for 1990 are based upon the 1990 cens and population data for 1991-2000 are projected from the 1990 data. Population estimates for the years 1990 through 2000 have been revised and may not match figures reported in the Management Reference Manual in prior years. (<http://www.dlg.oem2.state.co.us/demog/datalist.htm>)

<sup>2</sup> Colorado Bureau of Investigation, Uniform Crime Report, 1990 thru 1999 calendar years. ([http://cdpsweb.state.co.us/cbi/docs\\_reports.htm](http://cdpsweb.state.co.us/cbi/docs_reports.htm))

**DIVISION OF YOUTH CORRECTIONS**

**ALL CLIENTS  
POPULATION DATA**

**FY 2000-01**

	<b>Clients Served<sup>1</sup></b>	<b>Admissions</b>	<b>ADP</b>	<b>LOS<sup>2</sup> (days)</b>
<b>DETAINED YOUTH</b>				
State-Operated	7,297	11,974	464.6	14.4
Contracted Staff Secure	2,258	2,670	65.1	8.7
Boot Camp	356	277	53.4	61.4
Subtotal Detained <sup>3</sup>	8,899	14,921	583.0	14.5
<b>COMMITTED YOUTH</b>				
				<b>LOS<sup>2</sup> (months)</b>
Assessment <sup>4</sup>	905		65.4	1.0
State Secure	1,498		373.5	6.0
Private Secure/Staff Supervised	1,499		580.0	6.9
Community Residential	855		233.0	5.2
Subtotal Committed Residential	2,263		1,251.8	16.3
<b>PAROLE</b>	1,505		720.7	11.8
<b>TOTAL CLIENTS SERVED<sup>5</sup></b>	10,339		2,555.5	27.9 months
				<i>Total Commitment LOS</i>

*Numbers may not add exactly due to rounding.*

<sup>1</sup>Clients served counts are unduplicated within each category (see glossary, pg. ii).

<sup>2</sup>Lengths of stay are defined in the Glossary of Terms on page ii.

<sup>3</sup>Does not include Boot Camp.

<sup>4</sup>The number of youth served in assessment is larger than the number of new commitments since carryovers from the previous fiscal year as well as some recommitted youth were served in assessment during FY 2000-01.

<sup>5</sup>Includes detained, committed, and paroled youth. In previous years, this manual reported a total ADP for committed and detained youth only.



SECTION II

COMMITMENT POPULATION  
TRENDS AND CHARACTERISTICS

**DIVISION OF YOUTH CORRECTIONS**

**COMMITTED YOUTH  
POPULATION TRENDS**

**FY 1990-91 through FY 2000-01**

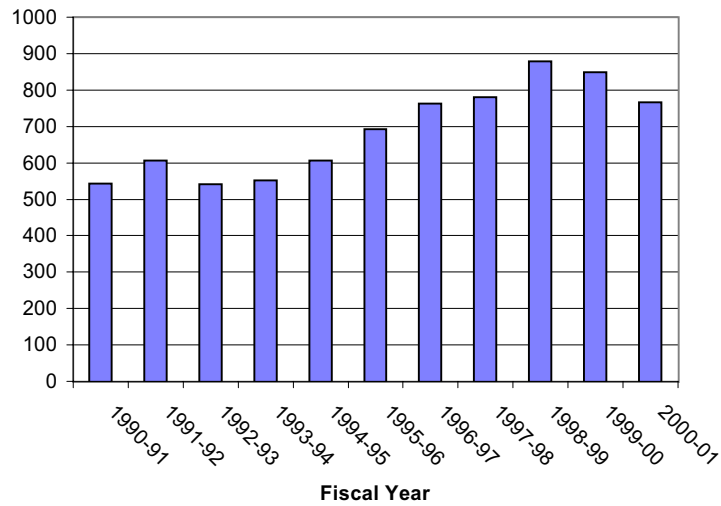
Fiscal Year	Number of		No. of New Commitments	Residential		Average	
	Clients Served <sup>1</sup>	Percentage Change +/-		ADP <sup>2</sup>	Percentage Change +/-	Residential LOS	Percentage Change +/-
1990-91	1,492		543	542.8		12.8	
1991-92	1,599	7.2%	607	563.4	3.8%	13.0	1.6%
1992-93	1,637	2.4%	542	609.3	8.1%	12.1	-6.9%
1993-94	1,622	-0.9%	552	612.5	0.5%	13.0	7.4%
1994-95	1,638	1.0%	606	633.9	3.5%	13.8	6.2%
1995-96	1,769	8.0%	693	762.9	20.4%	13.7	-0.7%
1996-97	1,891	6.9%	762	929.3	21.8%	14.5	5.8%
1997-98	2,046	8.2%	781	973.5	4.8%	15.1	4.1%
1998-99	2,269	10.9%	878	1,112.2	14.2%	15.6	3.3%
1999-00	2,544	12.1%	848	1,198.3	7.7%	15.5	-0.6%
2000-01	2,702	6.2%	766	1,251.8	4.5%	16.3	5.2%

<sup>1</sup>Clients served counts are unduplicated.

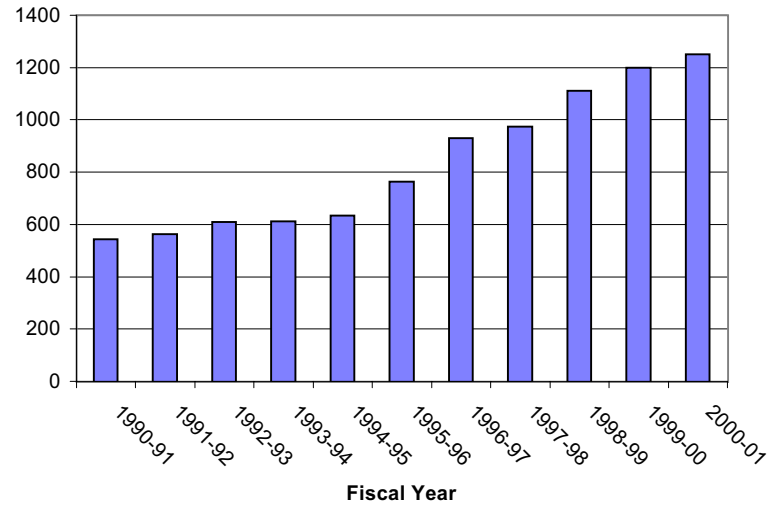
<sup>2</sup>ADP: Includes assessment, secure, staff supervised, and community residential.

**DIVISION OF YOUTH CORRECTIONS**  
**Trends in Commitment Populations**  
**FY1990-91 through FY 2000-01**

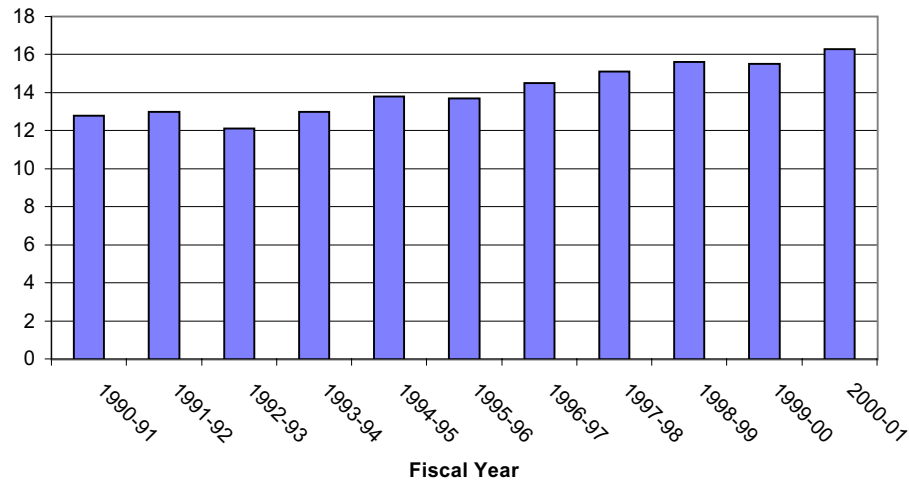
**TRENDS IN NEW COMMITMENTS**



**TRENDS IN RESIDENTIAL ADP**



**TRENDS IN RESIDENTIAL LOS**





**DIVISION OF YOUTH CORRECTIONS**  
**COMMITMENT POPULATION TRENDS BY PROGRAM TYPE**

FY 1998-99 through FY 2000-01

	FY 1998-99			FY 1999-00			FY 2000-01		
	No. of Clients Served <sup>1</sup>	ADP (mos.)	Res. LOS <sup>2</sup>	No. of Clients Served <sup>1</sup>	ADP (mos.)	Res. LOS <sup>2</sup>	No. of Clients Served <sup>1</sup>	ADP (mos.)	Res. LOS <sup>2</sup>
<b>ASSESSMENT:</b>									
Grand Mesa YSC	117	8.1	1.0	106	7.9	1.0	87	7.8	0.9
Marvin W. Foote YSC	205	15.7	1.0	212	15.6	0.9	225	17.6	1.0
Mount View YSC	215	17.2	1.1	200	15.0	1.0	164	9.2	1.0
Platte Valley YSC	202	15.0	0.8	233	16.6	0.9	247	17.3	1.0
Robert DeNier YSC	--	--	--	4	0.2	0.0	14	1.1	0.9
Spring Creek YSC	240	19.0	1.0	231	22.6	1.1	205	12.4	1.1
<b>TOTAL ASSESSMENT</b>	<b>960</b>	<b>75.0</b>	<b>1.0</b>	<b>963</b>	<b>77.9</b>	<b>1.0</b>	<b>905</b>	<b>65.4</b>	<b>1.0</b>
<b>SECURE:</b>									
State Operated:									
Grand Mesa YSC	182	31.0	3.9	203	36.3	3.5	174	39.5	3.3
Lookout Mountain YSC	293	153.4	12.7	298	154.9	13.1	304	157.7	12.4
Marvin W. Foote YSC	153	13.8	0.9	323	35.1	1.1	371	37.7	1.5
Mount View YSC	159	12.6	0.7	371	28.7	1.3	414	31.9	1.1
Platte Valley YSC	280	53.6	3.3	370	55.5	4.0	409	67.1	4.2
Zeb Pike YSC	83	39.7	4.1	90	38.9	8.4	83	39.6	7.8
Subtotal State Secure	1,048	304.1	NA	1,394	349.4	7.1	1,498	373.5	6.0
Privately Operated:									
Brown School <sup>3</sup>	--	--	--	--	--	--	1	0.8	0.0
Copper Hills	6	4.7	0.0	7	3.6	16.5	3	0.9	10.2
DAYS/Reflections	196	23.7	1.9	103	10.2	2.0	0	0.0	1.8
Foothills	102	24.5	4.1	94	24.7	3.4	98	23.5	4.0
Grand Prairie	75	32.1	10.7	70	31.7	9.9	110	29.0	9.2
Provo Canyon	46	22.4	9.6	35	15.1	8.6	19	10.1	9.7
Robert DeNier <sup>4</sup>	--	--	--	12	2.9	0.0	36	10.4	3.2
Teen Quest	47	19.7	9.4	45	19.3	9.3	36	13.0	9.5
Youth Track Aspen <sup>5</sup>	--	--	--	--	--	--	2	0.0	0.0
Youthtrack Lathrop	69	25.7	3.3	102	30.4	5.2	106	28.2	5.8
Youthtrack Orientation	445	66.0	2.1	366	47.3	2.0	378	48.4	2.0
Subtotal Private Secure	839	218.8	NA	723	185.2	3.9	696	164.3	5.1
<b>TOTAL SECURE</b>	<b>1,642</b>	<b>522.9</b>	<b>NA</b>	<b>1,680</b>	<b>534.6</b>	<b>8.2</b>	<b>1,733</b>	<b>537.8</b>	<b>8.1</b>

<sup>1</sup>Clients served is defined in the *Glossary of Terms* on page ii. Totals on this page for clients served are unduplicated within each category.

<sup>2</sup>Residential LOS is the average length of stay in months for youth discharged during the time period. Only those youth who spent any time in a program/facility are included in the LOS calculations. Youth might not have spent time in a particular program during the current fiscal year.

<sup>3</sup>Brown School began providing commitment secure services in FY2000-01.

<sup>4</sup>Robert DeNier Youth Services Center began providing secure services in January, 2000 and is a state-owned privately operated facility.

<sup>5</sup>Youthtrack Aspen began providing commitment secure services in FY2000-01.

**DIVISION OF YOUTH CORRECTIONS**  
**COMMITMENT POPULATION TRENDS BY PROGRAM TYPE**

FY 1998-99 through FY 2000-01

	FY 1998-99			FY 1999-00			FY 2000-01		
	No. of Clients Served <sup>1</sup>	Res. LOS <sup>2</sup> ADP (mos.)		No. of Clients Served <sup>1</sup>	Res. LOS <sup>2</sup> ADP (mos.)		No. of Clients Served <sup>1</sup>	Res. LOS <sup>2</sup> ADP (mos.)	
<b>STAFF SUPERVISED:</b>									
Privately Operated:									
Alternative Youth Adventures <sup>3</sup>	--	--	--	--	--	--	33	3.9	0.0
Aspen	207	30.3	2.1	215	31.0	2.1	168	25.6	2.0
Cedar Springs	8	3.0	6.8	1	1.0	6.9	2	1.2	2.2
Centennial Peaks	65	27.5	11.5	67	23.1	8.9	66	15.9	7.0
Colorado West	60	10.1	3.4	59	10.6	2.5	45	10.2	3.5
El Pueblo	20	9.1	9.0	29	11.6	8.0	33	14.9	8.6
Excelsior <sup>4</sup>	--	--	--	--	--	--	5	1.1	0.0
Fort Logan Mountain Star	16	4.8	3.3	19	4.6	5.5	15	4.6	5.7
Glen Mills	77	40.4	15.2	53	32.0	14.5	24	8.4	14.4
Griffith Center <sup>5</sup>	--	--	--	4	1.1	0.0	6	1.2	0.0
Hilltop West	49	11.3	4.2	59	10.5	3.5	49	10.6	3.6
Jefferson Hills Aurora	85	32.6	7.6	82	33.3	7.3	88	35.8	8.0
Jefferson Hills Lakewood	123	48.4	8.2	93	38.5	8.1	58	24.4	8.2
Rite of Passage	113	48.1	14.1	223	133.7	14.4	387	209.6	14.0
Sierra Vista	42	16.9	6.4	8	1.6	6.1	0	0.0	7.5
Youthtrack Work & Learn <sup>6</sup>	--	--	--	--	--	--	76	11.3	1.9
YSI - Chamberlain	11	3.8	6.0	12	4.6	6.1	9	3.7	6.7
YSI - Clarinda	3	1.7	0.0	0	0.0	0.0	0	0.0	6.8
YSI - Forest Ridge	7	2.9	0.0	17	6.3	7.1	15	6.6	4.9
YSI - Springfield	15	6.3	0.0	20	7.8	8.6	25	9.3	7.2
YSI - Tarkio	23	13.1	6.6	22	11.8	12.1	34	16.2	13.0
YSI - Woodward	3	1.4	3.1	4	2.6	9.2	3	1.0	0.6
<b>TOTAL STAFF SUPERVISED</b>	<b>853</b>	<b>311.7</b>	<b>NA</b>	<b>898</b>	<b>365.7</b>	<b>7.0</b>	<b>1,037</b>	<b>415.6</b>	<b>7.5</b>
<b>TOTAL COMMUNITY</b>									
<b>RESIDENTIAL</b>	<b>755</b>	<b>202.7</b>	<b>5.2</b>	<b>774</b>	<b>220.1</b>	<b>5.1</b>	<b>855</b>	<b>233.0</b>	<b>5.2</b>
<b>TOTAL RESIDENTIAL</b>	<b>2,040</b>	<b>1,112.3</b>	<b>15.6</b>	<b>2,175</b>	<b>978.2</b>	<b>15.5</b>	<b>2,263</b>	<b>1,251.8</b>	<b>16.3</b>

<sup>1</sup>Clients served is defined in the *Glossary of Terms* on page ii. Totals on this page for clients served are unduplicated within each category.

<sup>2</sup>Residential LOS is the average length of stay in months for youth discharged during the time period. Only those youth who spent any time in a program/facility are included in the LOS calculations. Youth might not have spent time in a particular program during the current fiscal year.

<sup>3</sup>Alternative Youth Adventures began serving youth in FY2000-01.

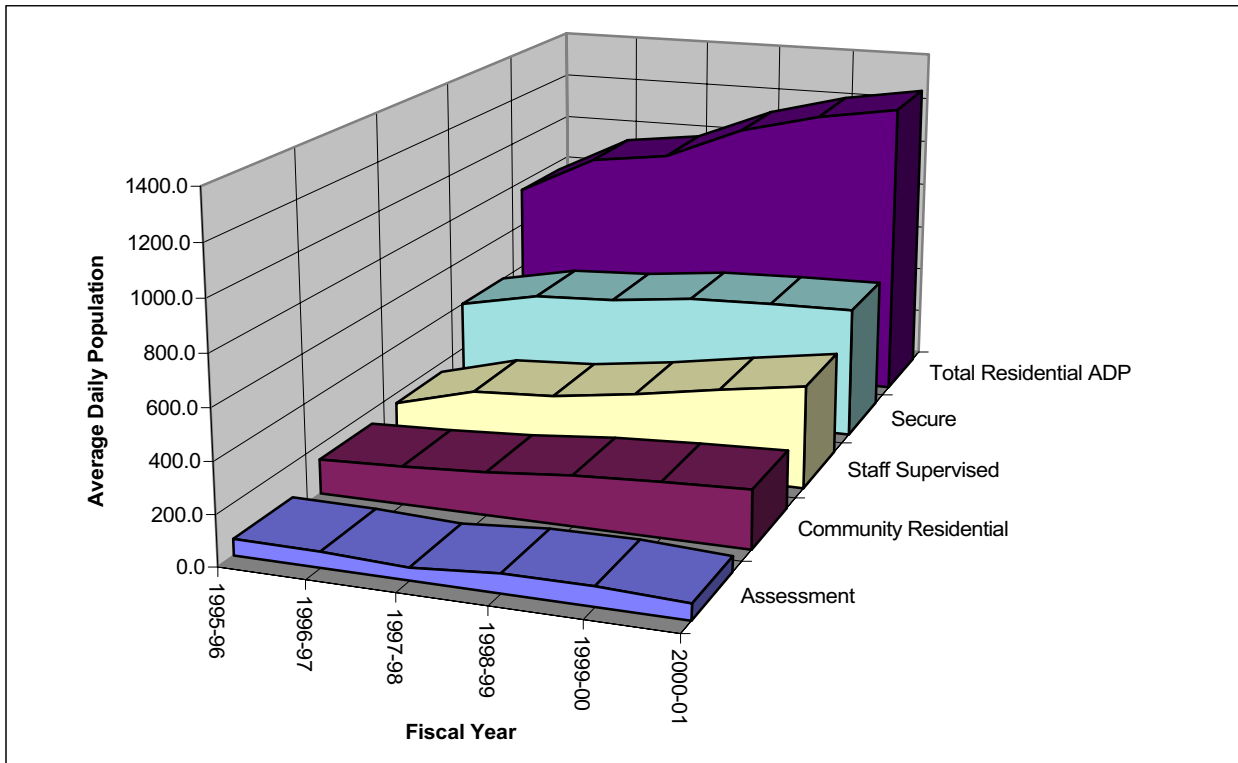
<sup>4</sup>Excelsior began serving youth in FY2000-01.

<sup>5</sup>Griffith Center began serving youth in FY2000-01.

<sup>6</sup>Youthtrack Work and Learn began serving youth in FY2000-01.

**DIVISION OF YOUTH CORRECTIONS  
ADP TRENDS IN  
RESIDENTIAL PROGRAMS**

	Fiscal Years:					
	1995-96	1996-97	1997-98	1998-99	1999-00	2000-01
Assessment	65.6	62.0	50.0	75.0	77.9	65.4
Secure	399.6	467.7	485.1	522.9	534.6	538.0
Staff Supervised	157.9	245.2	265.2	311.7	365.7	415.6
Community Residential	139.8	154.4	173.2	202.7	220.1	233.0
<b>Total Residential ADP</b>	<b>762.9</b>	<b>929.3</b>	<b>973.5</b>	<b>1,112.3</b>	<b>1,198.3</b>	<b>1,251.8</b>



**TRENDS IN COMMITMENT LENGTH OF STAY BY PROGRAM TYPE<sup>1</sup>**  
**FY 1998-99 through FY 2000-01**

<b><u>Program Type</u></b>	<b><u>FY 1998-99</u></b>	<b><u>FY 1999-00</u></b>	<b><u>FY 2000-01</u></b>
Assessment	1.0	1.0	1.0 months
Commitment Secure/Staff Supervised	11.7	11.4	11.9 months
Community Residential	5.2	5.1	5.2 months
Total Residential	15.6	15.5	16.3 months
Total Parole	8.2	11.0	11.8 months
Total Commitment	23.6	25.8	27.9 months

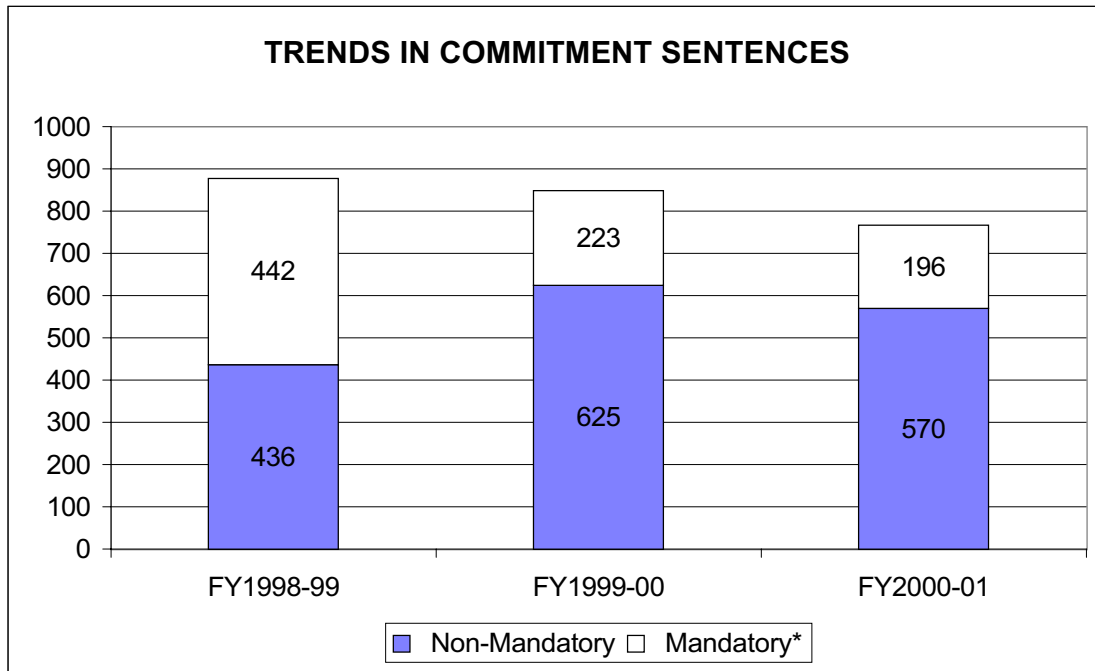
---

<sup>1</sup>Length of stay in the *Glossary of Terms* on page ii.

**DIVISION OF YOUTH CORRECTIONS**

**POPULATION TRENDS  
BY SENTENCE AND COMMITMENT TYPE  
FY 1998-99 through FY 2000-01**

NEW COMMITMENT SENTENCE TYPE	FY 1998-99		FY 1999-00		FY 2000-01	
	N	%	N	%	N	%
Mandatory:						
Mandatory Offender	336	38.3%	159	18.8%	153	20.0%
Repeat Offender	84	9.6%	39	4.6%	26	3.4%
Violent Offender	11	1.3%	4	0.5%	7	0.9%
Aggravated Juvenile Offender	11	1.3%	21	2.5%	10	1.3%
Non-Mandatory	436	49.7%	625	73.7%	570	74.4%
<b>TOTAL</b>	<b>878</b>	<b>100.0%</b>	<b>848</b>	<b>100.0%</b>	<b>766</b>	<b>100.0%</b>



\*Mandatory refers to *mandatory, aggravated juvenile, repeat, and violent* commitment sentences.

COMMITMENT TYPE	FY 1998-99		FY 1999-00		FY 2000-01	
	N	%	N	%	N	%
New Commitment	878	82.3%	848	76.9%	766	74.4%
Concurrent	161	15.1%	217	19.7%	224	21.8%
Consecutive	28	2.6%	38	3.4%	39	3.8%
<b>TOTAL</b>	<b>1,067</b>	<b>100.0%</b>	<b>1,103</b>	<b>100.0%</b>	<b>1,029</b>	<b>100.0%</b>

DIVISION OF YOUTH CORRECTIONS

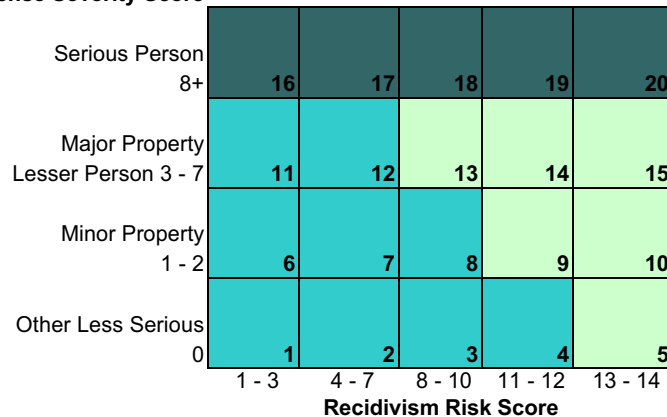
POPULATION TRENDS BY COMMITMENT CLASSIFICATION SCORES<sup>1</sup>  
 FY 1998-99 through FY2000-01

NEW COMMITMENT CLASSIFICATION	FY 1998-99		FY 1999-00		FY 2000-01	
	N	%	N	%	N	%
Cell 1	4	0.5%	3	0.4%	0	0.0%
Cell 2	14	1.6%	19	2.2%	20	2.6%
Cell 3	41	4.7%	43	5.1%	46	6.0%
Cell 4	31	3.5%	42	5.0%	23	3.0%
Cell 5	16	1.8%	8	0.9%	14	1.8%
Cell 6	0	0.0%	0	0.0%	1	0.1%
Cell 7	18	2.1%	10	1.2%	8	1.0%
Cell 8	54	6.2%	63	7.4%	31	4.0%
Cell 9	47	5.4%	55	6.5%	47	6.1%
Cell 10	44	5.0%	39	4.6%	47	6.1%
Cell 11	11	1.3%	5	0.6%	10	1.3%
Cell 12	92	10.5%	71	8.4%	78	10.2%
Cell 13	192	21.9%	167	19.7%	134	17.5%
Cell 14	101	11.5%	100	11.8%	95	12.4%
Cell 15	0	0.0%	0	0.0%	0	0.0%
Cell 16	31	3.5%	31	3.7%	31	4.0%
Cell 17	84	9.6%	109	12.9%	103	13.4%
Cell 18	95	10.8%	78	9.2%	74	9.7%
Cell 19 <sup>2</sup>	---	---	---	---	---	---
Cell 20 <sup>2</sup>	---	---	---	---	---	---
Cell Not Available	3	0.3%	5	0.6%	4	0.5%
<b>TOTAL</b>	<b>878</b>	<b>100.0%</b>	<b>848</b>	<b>100.0%</b>	<b>766</b>	<b>100.0%</b>

<sup>1</sup>Commitment classification score is calculated during assessment at time of commitment. The commitment classification methodology is being reexamined.

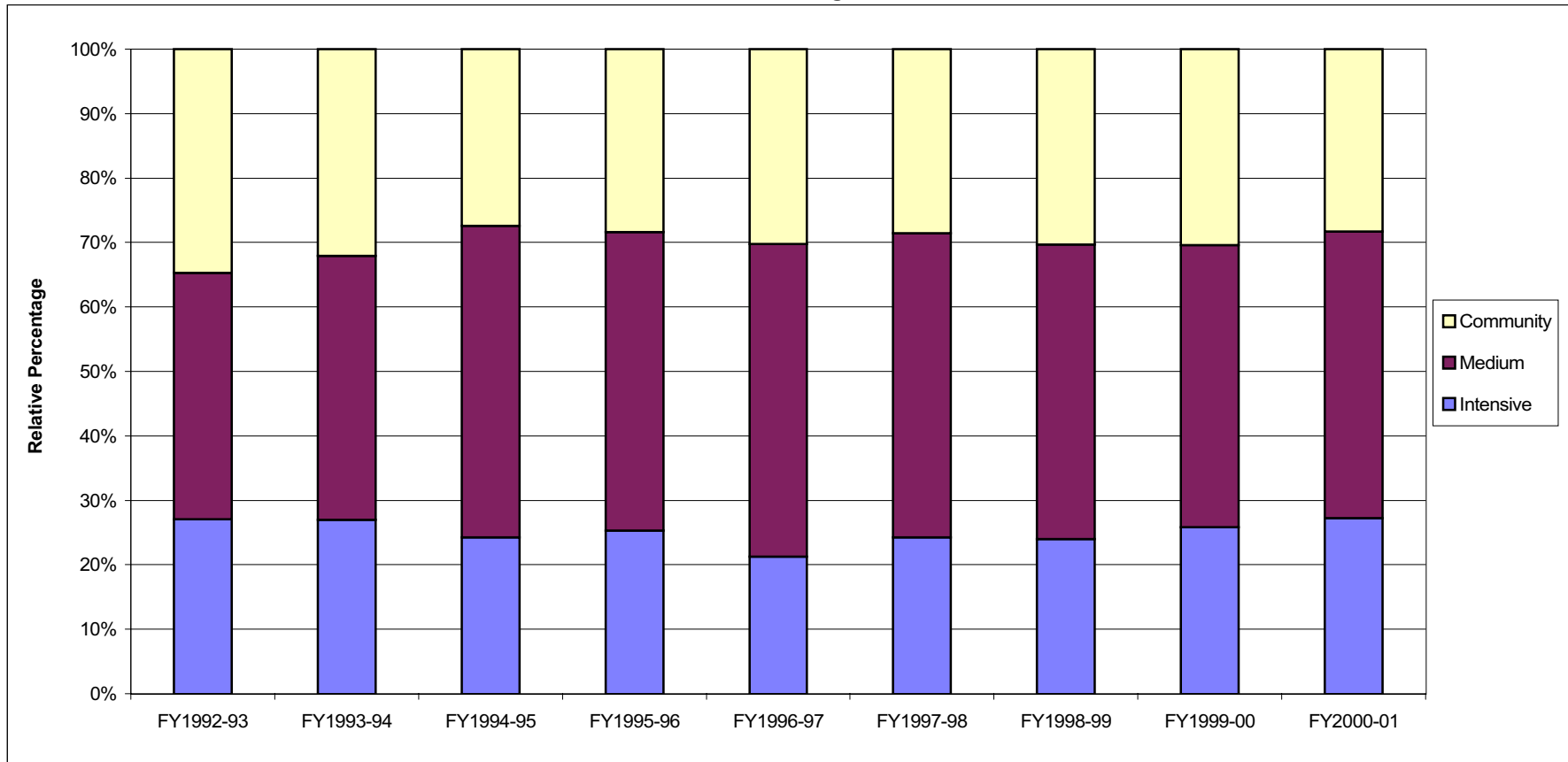
<sup>2</sup>Scoring of the classification grid does not allow youth to fall into this cell.

Offense Severity Score



Community Medium Secure Intensive Secure

**DIVISION OF YOUTH CORRECTIONS  
CLASSIFICATION TRENDS OF NEW COMMITMENTS  
FY1992-93 through 2000-01**



	Intensive		Medium		Community	
	<i>n</i>	%	<i>n</i>	%	<i>n</i>	%
<b>FY1992-93</b>	145	27%	205	38%	186	35%
<b>FY1993-94</b>	149	27%	226	41%	177	32%
<b>FY1994-95</b>	144	24%	287	48%	163	27%
<b>FY1995-96</b>	174	25%	319	46%	195	28%
<b>FY1996-97</b>	162	21%	369	48%	230	30%
<b>FY1997-98</b>	188	24%	365	47%	221	29%
<b>FY1998-99</b>	210	24%	400	46%	265	30%
<b>FY1999-00</b>	218	26%	369	44%	256	30%
<b>FY2000-01</b>	208	27%	337	44%	217	28%

NOTE: Fiscal year totals might not match what is reported elsewhere in this manual since classification data was not yet available on all new commitments at the time these data were prepared.

**DIVISION OF YOUTH CORRECTIONS**

**PAROLE  
POPULATION TRENDS**

FY 1998-99 through FY 2000-01

REGION	FY 1998-99			FY 1999-00			FY 2000-01		
	No. of		LOS <sup>3</sup> (mos.)	No. of		LOS <sup>3</sup> (mos.)	No. of		LOS <sup>3</sup> (mos.)
	Clients Served <sup>1</sup>	ADC <sup>2</sup>		Clients Served <sup>1</sup>	ADC <sup>2</sup>		Clients Served <sup>1</sup>	ADC <sup>2</sup>	
Southern	220	91.1	8.6	320	154.4	11.3	347	166.9	11.9
Western	157	69.9	8.9	187	93.5	11.4	175	90.9	12.7
Denver	152	55.7	7.9	221	105.6	11.6	331	161.7	11.6
Central	202	79.0	8.5	279	132.6	10.5	353	160.4	11.6
Northeast	181	70.5	7.4	236	115.7	10.1	300	140.9	11.9
<b>TOTAL<sup>4</sup></b>	<b>914</b>	<b>366.1</b>	<b>8.2</b>	<b>1,243</b>	<b>601.7</b>	<b>11.0</b>	<b>1,505</b>	<b>720.7</b>	<b>11.8</b>

**PAROLE  
POPULATION CHARACTERISTICS  
FY2000-01**

SEX:	ADC <sup>2</sup>	%	AGE <sup>5</sup> :	ADC <sup>2</sup>	%	PAROLE PLACEMENT TYPE:	ADC	%	LOS
Male	630.6	87.5%	12	0.0	0.0%				
Female	90.1	12.5%	13	0.5	0.1%	Nonresidential	447.7	62.1%	8.3
			14	2.1	0.3%	Residential	120.1	16.7%	3.8
TOTAL	720.7	100.0%	15	18.3	2.5%	Custody	137.3	19.1%	3.3
			16	52.6	7.3%	Other	15.9	2.2%	3.0
<b>ETHNICITY:</b>			17	115.9	16.1%				
Anglo	330.2	45.8%	18	202.8	28.1%				
African-American	116.6	16.2%	19 and over	328.6	45.6%				
Hispanic/Latino	250.7	34.8%							
Native-American	9.8	1.4%							
Asian-American	4.4	0.6%							
Other	9.0	1.2%							

Average Age of Youth on Parole<sup>5</sup>: 18.7 years

JOB/SCHOOL STATUS AT TIME OF PAROLE DISCHARGE <sup>6</sup> :	N	%	ORIGINAL SENTENCE TYPE <sup>7</sup> :	ADC <sup>2</sup>	%
Employed only	182	33.4%	Non-Mandatory	425.7	59.1%
Enrolled in school only	62	11.4%	Mandatory	224.0	31.1%
Employed and enrolled in school	116	21.3%	Repeat	62.9	8.7%
Unemployed and not in School	182	33.4%	Violent	4.5	0.6%
Unknown	3	0.6%	Aggravated Juvenile	3.7	0.5%
TOTAL DISCHARGED	545	100.0%	Adult	0.0	0.0%

<sup>1</sup>Clients served counts are unduplicated.

<sup>2</sup>Average Daily Caseload (ADC) is the average number of youth on parole active status during the time period. This includes youth under parole supervision as part of the Interstate Compact on Juveniles (ICJ). Youth on parole who were on escape status during the time period are not included.

<sup>3</sup>Parole length of stay is defined in the *Glossary of Terms* on page ii.

<sup>4</sup>Interstate Compact is included in total clients served. Total clients served may not equal the sum of the five regions since youth may be served in more than one region.

<sup>5</sup>Calculated based on age of youth on the last day of the fiscal year.

<sup>6</sup>Includes only youth who were on parole at time of discharge. Captures job/School status on day of discharge.

<sup>7</sup>This represents sentence type at time of original commitment only. If youth were recommitted, sentence type can change.



**DIVISION OF YOUTH CORRECTIONS**  
**COLORADO JUVENILE COMMITMENT RATE**  
**BY COUNTY<sup>1</sup>**  
**FY1998-99 through FY2000-01**

County of Commitment	Juvenile Population Age 10-17 yrs. <sup>2</sup>	Number of New Commitments FY 2000-01 <sup>3</sup>	Rate <sup>4</sup> of Juvenile Commitments Per 10,000 Juvenile Population <sup>5</sup>		
			<u>FY 1998-99</u>	<u>FY 1999-00</u>	<u>FY 2000-01</u>
Adams	42,868	56	18	15	13
Arapahoe	58,235	61	13	10	10
Boulder	31,297	10	5	6	3
Denver	60,832	133	36	29	22
Douglas	22,605	13	7	3	6
El Paso	60,495	90	20	17	15
Jefferson	60,171	99	15	17	16
Larimer	27,778	53	11	18	19
Mesa	13,832	40	26	31	29
Pueblo	15,796	30	13	22	19
Weld	22,114	56	25	28	25
<b>STATE TOTAL<sup>4</sup></b>	499,700	766	18	17	15

<sup>1</sup>Only counties with juvenile populations over 10,000 are included.

<sup>2</sup>Population figures for ages 10 through 17 are estimates derived from 1990 intercensus population estimates, Colorado Department of Local Affairs. (<http://www.dlg.oem2.state.co.us/demog/datalist.htm>) Estimates are for calendar year 2000.

<sup>3</sup>Number represents the number of NEW commitments from that county.

<sup>4</sup>The "Rate per 10,000" represents the number of commitments per every 10,000 youth in the county. Rates are reported rather than raw numbers to control for variances in population size by county, so that cross-county comparisons can be made.

<sup>5</sup>Commitment rates for prior fiscal years have been updated using more current population estimates. In addition, this year rates are being reported per 10,000 youth rather than 100,000 youth. Therefore, these numbers are different from what was reported in prior Management Reference Manuals.

**COMMITTED YOUTH  
DEMOGRAPHIC TRENDS  
FY 1997-98 through FY 1999-00**

	FY 1998-99				FY 1999-00				FY 2000-01			
	No. of New Commit- ments	%	ADP	Res. LOS (Mos.)	No. of New Commit- ments	%	ADP	Res. LOS (Mos.)	No. of New Commit- ments	%	ADP	Res. LOS (Mos.)
<b>SEX</b>												
Male	769	87.6%	992.6	16.0	738	87.0%	1,058.3	15.9	677	88.4%	1,121.7	16.5
Female	109	12.4%	119.6	12.7	110	13.0%	140.0	13.0	89	11.6%	130.1	14.3
TOTAL	878	100.0%	1,112.2	15.6	848	100.0%	1,198.3	15.5	766	100.0%	1,251.8	16.3
<b>ETHNICITY</b>												
Anglo	410	46.7%	541.0	15.7	389	45.9%	561.2	15.9	394	51.4%	593.0	16.3
African-American	144	16.4%	188.0	16.4	104	12.3%	195.6	16.3	86	11.2%	167.4	17.9
Hispanic/Latino	297	33.8%	347.7	15.2	326	38.4%	401.1	14.1	269	35.1%	453.0	15.4
Native American	14	1.6%	12.5	13.7	6	0.7%	16.3	10.6	6	0.8%	12.6	17.9
Asian-American	4	0.5%	8.3	13.8	6	0.7%	6.5	14.3	4	0.5%	6.0	14.4
Other	9	1.0%	14.7	16.5	17	2.0%	17.6	20.4	7	0.9%	19.7	18.1
<b>AGE<sup>1</sup></b>												
12 Years	3	0.3%	0.4	18.7	5	0.6%	0.2	18.3	5	0.7%	0.2	14.6
13 Years	37	4.2%	9.4	20.6	32	3.8%	5.3	17.4	28	3.7%	5.2	19.5
14 Years	84	9.6%	35.7	19.3	88	10.4%	38.3	20.4	78	10.2%	32.0	20.8
15 Years	174	19.8%	94.5	17.1	184	21.7%	102.2	17.0	149	19.5%	108.0	18.3
16 Years	266	30.3%	210.1	15.3	235	27.7%	211.5	14.9	203	26.5%	207.9	15.7
17 Years	278	31.7%	313.2	13.4	263	31.0%	325.2	13.5	268	35.0%	325.0	14.4
18 Years	32	3.6%	305.7	12.7	37	4.4%	326.4	14.3	32	4.2%	352.6	14.9
19 Years	3	0.3%	116.5	11.1	2	0.2%	156.3	16.5	3	0.4%	167.9	11.1
20 Years	1	0.1%	24.7	5.1	2	0.2%	29.3	0.0	0	0.0%	47.8	8.3
21 Years	0	0.0%	2.1	0.0	0	0.0%	3.6	0.0	0	0.0%	5.1	0.0
<b>Average Age</b>												
<b>at Commitment:</b>	16.4 Years				16.3 Years				16.4 Years			

<sup>1</sup>Actual counts and LOS for each age category correspond to age at commitment. ADP figures for each age category, however, are based on the youth's age on the last day of the fiscal year.

**DIVISION OF YOUTH CORRECTIONS  
COMMITMENT POPULATION CHARACTERISTICS BY GENDER  
FY1998-99 through FY2000-01**

	MALES						FEMALES					
	FY1998-99		FY1999-00		FY2000-01		FY1998-99		FY1999-00		FY2000-01	
	n	%	n	%	n	%	n	%	n	%	n	%
<b>DEMOGRAPHIC DATA<sup>1</sup></b>												
Ethnicity												
Anglo:	343	44.6%	338	45.8%	339	50.1%	67	61.5%	51	46.4%	55	61.8%
African-American:	136	17.7%	90	12.2%	79	11.7%	8	7.3%	14	12.7%	7	7.9%
Hispanic/Latino:	265	34.5%	284	38.5%	244	36.0%	32	29.4%	42	38.2%	25	28.1%
Native American:	12	1.6%	5	0.7%	5	0.7%	2	1.8%	1	0.9%	1	1.1%
Asian-American:	4	0.5%	6	0.8%	4	0.6%	0	0.0%	0	0.0%	0	0.0%
Other:	<u>9</u>	1.2%	<u>15</u>	2.0%	<u>6</u>	<u>0.9%</u>	<u>0</u>	0.0%	<u>2</u>	1.8%	<u>1</u>	1.1%
TOTAL NEW COMMITMENTS	769	100.0%	738	100.0%	677	100.0%	109	100.0%	110	100.0%	89	100.0%
Age												
12 Years	2	0.3%	4	0.5%	5	0.7%	1	0.9%	1	0.9%	0	0.0%
13 Years	32	4.2%	28	3.8%	25	3.7%	5	4.6%	4	3.6%	3	3.4%
14 Years	67	8.7%	80	10.8%	64	9.5%	17	15.6%	8	7.3%	14	15.7%
15 Years	153	19.9%	152	20.6%	128	18.9%	21	19.3%	32	29.1%	21	23.6%
16 Years	233	30.3%	202	27.4%	181	26.7%	33	30.3%	33	30.0%	22	24.7%
17 Years	251	32.6%	235	31.8%	241	35.6%	27	24.8%	28	25.5%	27	30.3%
18 Years	27	3.5%	33	4.5%	30	4.4%	5	4.6%	4	3.6%	2	2.2%
19 Years	3	0.4%	2	0.3%	3	0.4%	0	0.0%	0	0.0%	0	0.0%
20 Years	1	0.1%	2	0.3%	0	0.0%	0	0.0%	0	0.0%	0	0.0%
Average Age at Commitment <sup>2</sup> :	16.4 Yrs.		16.4 Yrs.		16.5 Yrs.		16.1 Yrs.		16.2 Yrs.		16.2 Yrs.	
<b>NEW COMMITMENT PROFILE</b>												
Prior Adjudications												
None:	166	21.6%	167	22.6%	147	21.7%	47	43.1%	45	40.9%	33	37.1%
One:	204	26.5%	211	28.6%	167	24.7%	25	22.9%	29	26.4%	24	27.0%
Two or more:	399	51.9%	360	48.8%	363	53.6%	37	33.9%	36	32.7%	32	36.0%
Prior Out-of-Home Placements												
None:	168	21.8%	153	20.7%	131	19.4%	12	11.0%	11	10.0%	12	13.5%
One:	160	20.8%	170	23.0%	167	24.7%	15	13.8%	14	12.7%	7	7.9%
Two or more:	441	57.3%	415	56.2%	379	56.0%	82	75.2%	85	77.3%	70	78.7%
Runaway History <sup>2</sup>												
No runaway history:	315	41.0%	304	41.2%	283	41.8%	18	16.5%	21	19.1%	16	18.0%
Runaway history:	452	58.8%	430	58.3%	391	57.8%	91	83.5%	89	80.9%	73	82.0%
Missing Data:	2	0.3%	4	0.5%	3	0.4%	0	0.0%	0	0.0%	0	0.0%
Assessed Substance Abuse Counseling Needs <sup>3</sup>												
Prevention:	113	14.7%	111	15.0%	112	16.5%	11	10.1%	20	18.2%	13	14.6%
Intervention:	231	30.0%	275	37.3%	215	31.8%	22	20.2%	33	30.0%	25	28.1%
Treatment:	422	54.9%	343	46.5%	344	50.8%	76	69.7%	56	50.9%	50	56.2%
Missing Data:	3	0.4%	9	1.2%	6	0.9%	0	0.0%	1	0.9%	1	1.1%
Average Age at First Adjudication:	14.1 Yrs.		14.1 Yrs.		14.1 Yrs.		14.4 Yrs.		14.3 Yrs.		14.1 Yrs.	
<b>POPULATION DATA</b>												
Average Daily Population												
Assessment:	65.2		68.5		56.9		9.34		9.6		8.4	
Commitment Secure/Staff Supervised:	749.3		803.2		857.8		85.1		96.9		95.8	
Community Residential:	<u>177.7</u>		<u>186.6</u>		<u>207.0</u>		<u>25.0</u>		<u>33.5</u>		<u>25.9</u>	
Total Residential:	992.3		1,058.3		1,121.7		119.5		140.0		130.1	
Parole <sup>4</sup> :	323.7		530.7		630.6		42.4		71.0		90.1	

<sup>1</sup>Data are based on NEW commitments.

<sup>2</sup>Refers to running away from a secure or nonsecure placement as well as from home during the 12 months prior to commitment.

<sup>3</sup>Substance abuse history and treatment needs are assessed within one month of commitment. Youth with minimal substance abuse history and/or treatment needs are identified for *prevention* services whereas those reporting the greatest history of abuse and treatment needs are targeted for substance abuse *treatment* services.

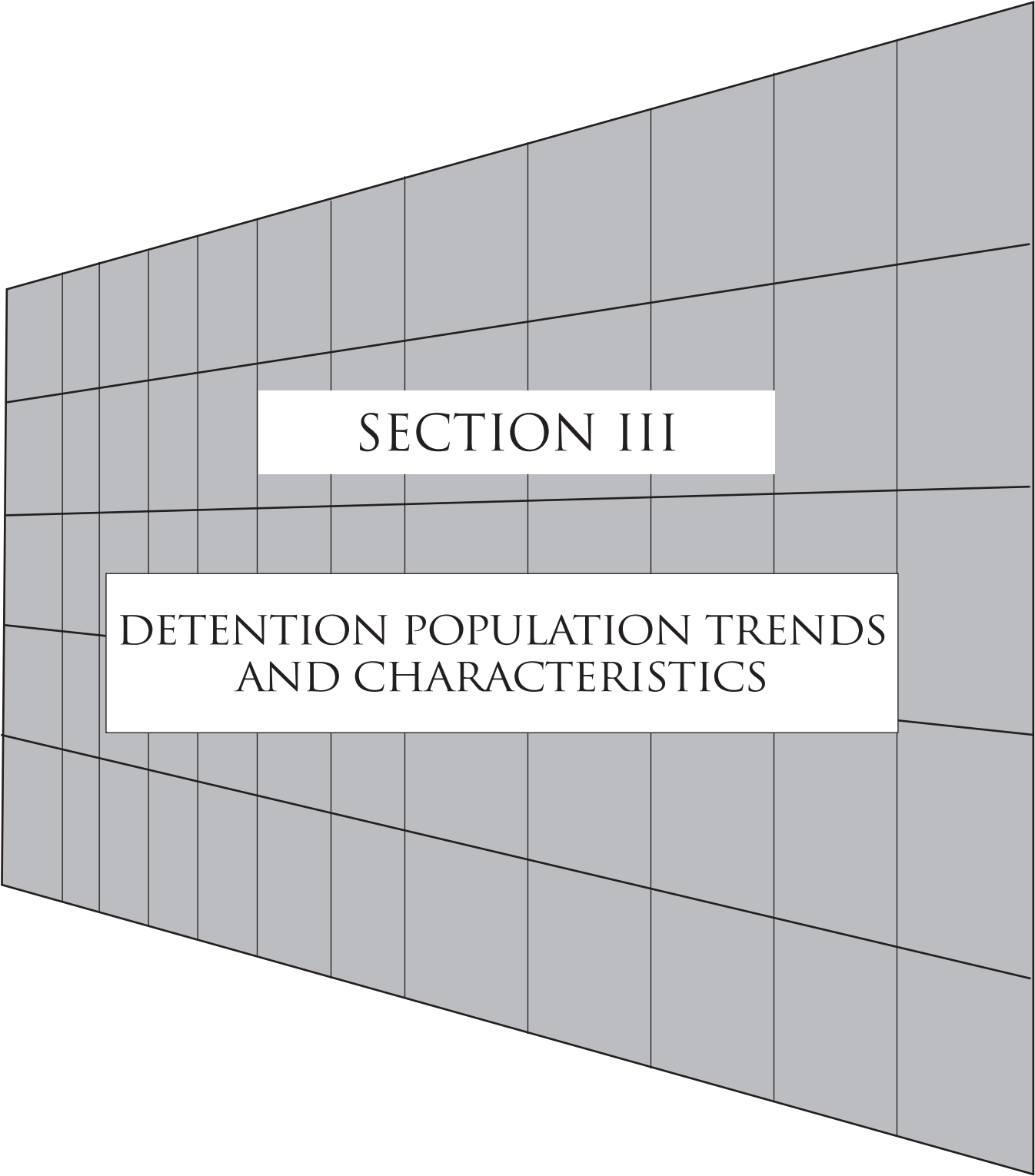
<sup>4</sup>Only youth actively on parole are included in ADP calculations; youth who were on escape status during the time period are excluded.

**DIVISION OF YOUTH CORRECTIONS  
COMMITMENT POPULATION CHARACTERISTICS BY GENDER  
FY1998-99 through FY2000-01**

	MALES						FEMALES					
	FY1998-99		FY1999-00		FY2000-01		FY1998-99		FY1999-00		FY2000-01	
	n	%	n	%	n	%	n	%	n	%	n	%
<b>COMMITMENT DATA<sup>1</sup></b>												
Offense Type												
Person Felony:	153	19.9%	177	24.0%	153	22.6%	13	11.9%	16	14.5%	18	20.2%
Person Misdemeanor:	141	18.3%	118	16.0%	100	14.8%	30	27.5%	25	22.7%	18	20.2%
Property Felony:	264	34.3%	247	33.5%	248	36.6%	28	25.7%	35	31.8%	23	25.8%
Property Misdemeanor:	63	8.2%	60	8.1%	65	9.6%	21	19.3%	17	15.5%	11	12.4%
Drug Felony:	59	7.7%	40	5.4%	33	4.9%	5	4.6%	5	4.5%	5	5.6%
Drug Misdemeanor:	3	0.4%	5	0.7%	4	0.6%	1	0.9%	1	0.9%	1	1.1%
Weapons Felony:	10	1.3%	3	0.4%	6	0.9%	1	0.9%	0	0.0%	0	0.0%
Weapons Misdemeanor:	26	3.4%	28	3.8%	13	1.9%	0	0.0%	1	0.9%	1	1.1%
Other:	48	6.2%	56	7.6%	53	7.8%	9	8.3%	10	9.1%	12	13.5%
Missing Data:	<u>2</u>	<u>0.3%</u>	<u>4</u>	<u>0.5%</u>	<u>2</u>	<u>0.3%</u>	<u>1</u>	<u>0.9%</u>	<u>0</u>	<u>0.0%</u>	<u>0</u>	<u>0.0%</u>
TOTAL NEW COMMITMENTS	769	100.0%	738	100.0%	677	100.0%	109	100.0%	110	100.0%	89	100.0%
Commitment Sentence Type												
Non-Mandatory:	366	47.6%	536	72.6%	498	73.6%	70	64.2%	89	80.9%	72	80.9%
Mandatory:	305	39.7%	141	19.1%	141	20.8%	31	28.4%	18	16.4%	12	13.5%
Repeat:	78	10.1%	37	5.0%	22	3.2%	6	5.5%	2	1.8%	4	4.5%
Violent:	9	1.2%	4	0.5%	7	1.0%	2	1.8%	0	0.0%	0	0.0%
Aggravated Juvenile:	11	1.4%	20	2.7%	9	1.3%	0	0.0%	1	0.9%	1	1.1%
New Commitment Classification												
Intensive:	192	25.0%	199	27.0%	188	27.8%	18	16.5%	19	17.3%	20	22.5%
Medium:	346	45.0%	318	43.1%	297	43.9%	54	49.5%	51	46.4%	40	44.9%
Community:	228	29.6%	217	29.4%	188	27.8%	37	33.9%	39	35.5%	29	32.6%
Missing Data:	3	0.4%	4	0.5%	4	0.6%	0	0.0%	1	0.9%	0	0.0%
Commitment Type												
New Commitment:	769	82.1%	738	76.4%	677	74.3%	109	83.8%	110	80.3%	89	75.4%
Concurrent:	143	15.3%	198	20.5%	205	22.5%	18	13.8%	19	13.9%	19	16.1%
Consecutive:	<u>25</u>	<u>2.7%</u>	<u>30</u>	<u>3.1%</u>	<u>29</u>	<u>3.2%</u>	<u>3</u>	<u>2.3%</u>	<u>8</u>	<u>5.8%</u>	<u>10</u>	<u>8.5%</u>
TOTAL COMMITMENTS	937	100.0%	966	100.0%	911	100.0%	130	100.0%	137	100.0%	118	100.0%
<b>DISCHARGE DATA<sup>2</sup></b>												
Average Age at Discharge	18.4 Yrs.		18.7 Yrs.		18.8 Yrs.		18.0 Yrs.		18.2 Yrs.		18.5 Yrs.	
Average LOS (months)												
Commitment Secure/Staff Supervised:	12.0		11.8		12.1		8.7		8.5		10.2	
Community Residential:	5.2		5.0		5.3		5.1		5.5		4.7	
Total Residential:	16.0		15.9		16.5		12.7		13.0		14.3	
Parole:	8.1		11.1		11.9		9.4		10.0		11.6	
Total Commitment:	23.8		26.3		28.1		22.4		22.6		26.6	
	n	%	n	%	n	%	n	%	n	%	n	%
Job/School Status at Time of Parole Discharge <sup>3</sup>												
Employed only	109	37.8%	149	41.5%	167	34.7%	16	41.0%	21	36.2%	15	23.4%
Enrolled in school only	44	15.3%	45	12.5%	51	10.6%	6	15.4%	11	19.0%	11	17.2%
Employed and enrolled in school	77	26.7%	67	18.7%	95	19.8%	11	28.2%	16	27.6%	21	32.8%
Unemployed and not in school	57	19.8%	97	27.0%	165	34.3%	6	15.4%	9	15.5%	17	26.6%
Missing Data:	<u>1</u>	<u>0.3%</u>	<u>1</u>	<u>0.3%</u>	<u>3</u>	<u>0.6%</u>	<u>0</u>	<u>0.0%</u>	<u>1</u>	<u>1.7%</u>	<u>0</u>	<u>0.0%</u>
TOTAL DISCHARGED	288	100.0%	359	100.0%	481	100.0%	39	100.0%	58	100.0%	64	100.0%

<sup>1</sup>Data are based on NEW commitments.

<sup>2</sup>Data are based on all youth discharged during the fiscal year.



SECTION III

DETENTION POPULATION TRENDS  
AND CHARACTERISTICS

**DIVISION OF YOUTH CORRECTIONS**

**DETAINED YOUTH  
POPULATION TRENDS<sup>1</sup>**

**FY 1990-91 through FY 2000-01**

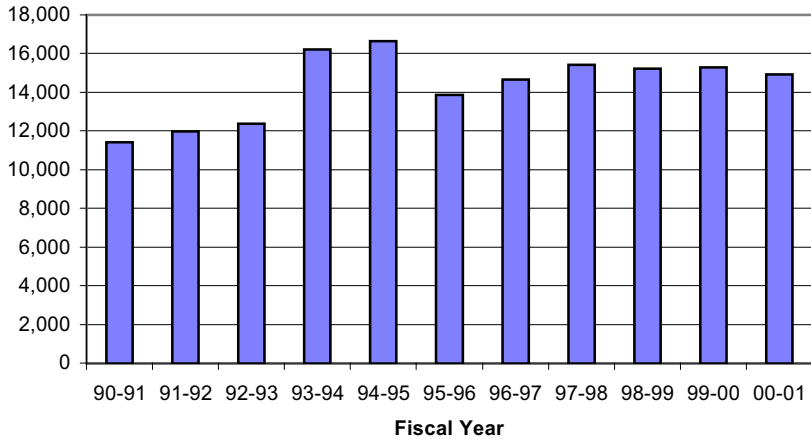
<b>Fiscal Year</b>	<b>Number of Clients Served<sup>2</sup></b>	<b>Percentage Change +/-</b>	<b>No. of New Admissions</b>	<b>Percentage Change +/-</b>	<b>ADP</b>	<b>Percentage Change +/-</b>	<b>LOS</b>	<b>Percentage Change +/-</b>
1990-91	5,920		11,402		375.0		10.8	
1991-92	6,548	10.6%	11,988	5.1%	380.6	1.5%	11.6	7.4%
1992-93	6,820	4.2%	12,388	3.3%	403.2	5.9%	12.0	3.4%
1993-94	7,800	14.4%	16,197	30.7%	467.8	16.0%	10.4	-13.3%
1994-95	8,807	12.9%	16,638	2.7%	589.0	25.9%	13.2	26.9%
1995-96	7,870	-10.6%	13,852	-16.7%	541.5	-8.1%	13.7	3.8%
1996-97	8,303	5.5%	14,652	5.8%	522.5	-3.5%	13.0	-5.1%
1997-98	8,785	5.8%	15,428	5.3%	591.8	13.3%	13.9	7.2%
1998-99	8,924	1.6%	15,212	-1.4%	602.4	1.8%	14.6	4.5%
1999-00	8,799	-1.4%	15,294	0.5%	589.1	-2.2%	14.3	-1.9%
2000-01	8,899	1.1%	14,921	-2.4%	583.0	-1.0%	14.5	1.4%

<sup>1</sup>Contracted holding facilities are used in detention totals.

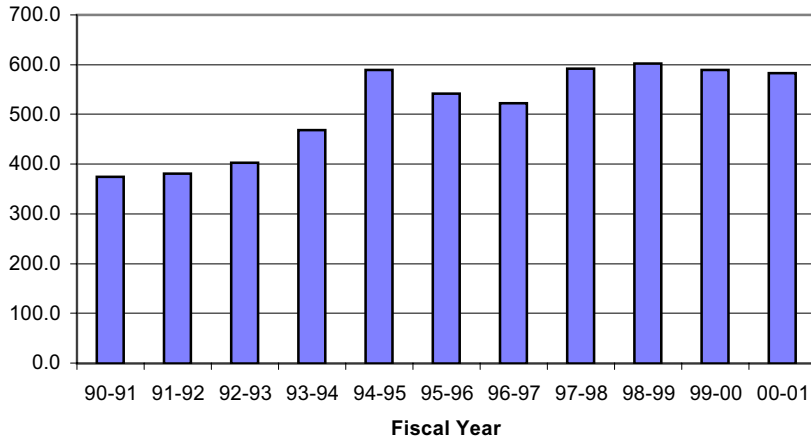
<sup>2</sup>Clients served counts are unduplicated.

**DIVISION OF YOUTH CORRECTIONS**  
**Trends in Detention Populations**  
**FY1990-91 through FY2000-01**

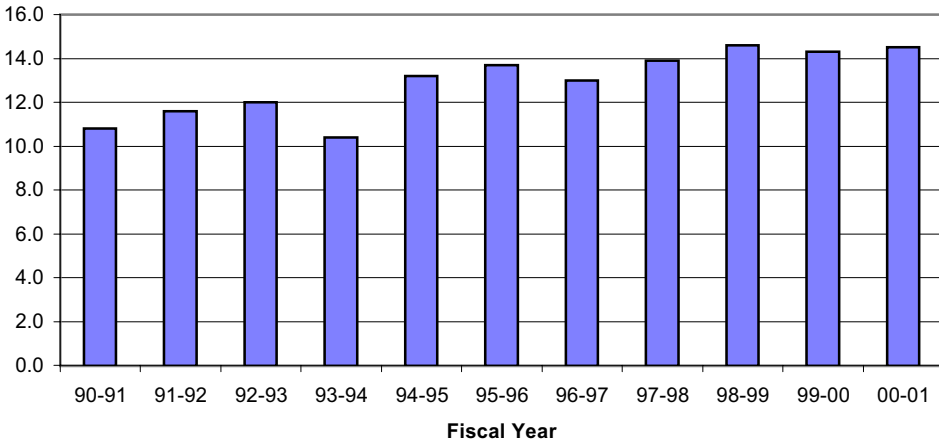
**TRENDS IN DETENTION ADMISSIONS**



**TRENDS IN DETENTION ADP**



**TRENDS IN DETENTION LOS**



**DIVISION OF YOUTH CORRECTIONS**  
**DETENTION POPULATION TRENDS BY PROGRAM TYPE**  
**FY 1998-99 through FY 2000-01**

	FY 1998-99				FY 1999-00				FY 2000-01			
	Clients		LOS		Clients		LOS		Clients		LOS	
	Served <sup>1</sup>	Adm	ADP	(days)	Served <sup>1</sup>	Adm	ADP	(days)	Served <sup>1</sup>	Adm	ADP	(days)
<b>STATE OPERATED:</b>												
Adams YSC	564	713	32.6	17.0	547	698	28.5	15.4	567	760	33.6	16.0
Gilliam YSC	1,573	2,057	68.4	12.2	1,453	1,946	70.3	12.9	1,307	1,688	68.5	15.1
Grand Mesa YSC	512	680	31.5	16.9	493	671	29.5	15.7	438	613	28.7	16.8
Marvin Foote YSC	1,377	1,857	67.7	13.9	1,383	1,965	67.1	13.7	1,470	2,113	77.7	13.8
Mount View YSC	1,433	1,901	85.7	17.3	1,299	1,760	64.2	14.0	1,093	1,454	63.1	16.4
Platte Valley YSC	1,112	1,971	63.6	12.0	1,167	2,161	63.0	10.7	1,148	2,104	66.0	11.2
Pueblo YSC	807	1,169	41.4	13.4	805	1,208	47.3	14.3	741	1,111	44.0	14.1
Spring Creek YSC <sup>2</sup>	1,524	2,295	78.7	12.4	1,570	2,395	86.3	13.4	1,440	2,131	83.2	14.9
<b>SUBTOTAL STATE OPERATED</b>	<b>7,823</b>	<b>12,643</b>	<b>469.5</b>	<b>13.8</b>	<b>7,704</b>	<b>12,804</b>	<b>456.1</b>	<b>13.3</b>	<b>7,297</b>	<b>11,974</b>	<b>464.6</b>	<b>14.4</b>
<b>PRIVATELY OPERATED</b>												
Staff Secure:												
Colorado West	51	60	3.3	17.4	53	62	2.3	14.6	59	63	3.0	17.7
Dahlia Street	832	919	24.5	9.3	701	765	20.2	11.0	1,071	1,304	20.6	6.1
Gateway (Central)	37	40	1.1	11.3	4	3	1.1	16.6	1	0	0.0	38.1
Gateway (Southern)	36	42	1.8	13.8	56	60	1.9	12.0	48	52	1.2	9.7
Hilltop Youth Services	50	50	3.0	20.8	49	50	2.9	21.5	34	34	3.2	25.5
LaPlata Youth Services	47	49	1.2	9.3	9	9	0.4	17.4	0	0	0.0	0.0
Midway Shelter	169	185	6.8	13.9	154	171	8.1	17.9	166	192	8.7	16.4
Moffat County	34	43	2.0	18.0	32	53	1.1	7.7	7	5	0.1	13.8
Robert DeNier <sup>3</sup>	0	0	0.0	0.0	62	76	4.8	17.0	128	168	10.7	24.2
Top of The Trail	3	3	0.0	3.2	0	0	0.0	0.0	0	0	0.0	0.0
Youthtrack Alamosa	136	197	12.1	14.5	221	275	6.15	8.3	351	415	6.9	7.1
Youthtrack Fillmore	458	536	8.6	4.4	436	501	7.0	5.0	388	437	5.7	5.9
Subtotal Staff Secure	1,836	2,124	64.4	9.7	1,762	2,025	55.9	10.3	2,258	2,670	35.2	8.7
Boot Camp <sup>4</sup>	523	445	68.6	57.8	541	465	77.1	59.0	356	277	53.4	61.4
<b>SUBTOTAL PRIVATELY OPERATED</b>	<b>NA</b>	<b>2,569</b>	<b>133.0</b>	<b>18.2</b>	<b>2,243</b>	<b>2,490</b>	<b>133.0</b>	<b>19.4</b>	<b>2,573</b>	<b>2,947</b>	<b>119.5</b>	<b>15</b>
<b>TOTAL DETENTION</b>	<b>8,924</b>	<b>15,212</b>	<b>602.4</b>	<b>14.6</b>	<b>8,799</b>	<b>15,294</b>	<b>589.1</b>	<b>14.3</b>	<b>8,899</b>	<b>14,921</b>	<b>583.0</b>	<b>14.5</b>

<sup>1</sup>Clients served counts are unduplicated.

<sup>2</sup>Spring Creek YSC began accepting youth in February, 1998.

<sup>3</sup>Robert DeNier Youth Services Center began providing secure services in January, 2000 and is a state-owned privately operated facility.



**DIVISION OF YOUTH CORRECTIONS**  
**COLORADO JUVENILE DETENTION RATES**  
**BY COUNTY<sup>1</sup>**  
**FY1998-99 through FY2000-01**

County of Offense	Juvenile Population Age 10-17 yrs. <sup>2</sup>	Number Juvenile Admissions FY 2000-01	Number Juvenile Admissions Per 10,000 Juvenile Population <sup>3</sup>		
			<u>FY 1998-99</u>	<u>FY 1999-00</u>	<u>FY 2000-01</u>
Adams	42,868	822	196	176	192
Arapahoe	58,235	1,690	275	280	291
Boulder	31,297	827	293	299	264
Denver	60,832	3,537	634	567	581
Douglas	22,605	223	110	108	99
El Paso	60,495	1,751	357	348	289
Jefferson	60,171	1,411	302	277	234
Larimer	27,778	585	181	210	211
Mesa	13,832	417	344	330	301
Pueblo	15,796	874	615	683	553
Weld	22,114	747	322	351	338
<b>STATE TOTAL</b>	499,700	14,921	318	312	299

<sup>1</sup>Only counties with juvenile populations over 10,000 are included.

<sup>2</sup>Population figures for ages 10 through 17 are derived from the 1990 intercensus estimates, Colorado Division of Local Government. (<http://www.dlg.oem2.state.co.us/demog/datalist.htm>) Estimates are for calendar year 2000.

<sup>3</sup>Detention rates for prior fiscal years have been updated using more current population estimates and therefore may be different from what was reported in prior Management Reference Manuals.

**DIVISION OF YOUTH CORRECTIONS**

**DETENTION  
DEMOGRAPHIC TRENDS**

**FY 1998-99 through FY 2000-01**

	FY 1998-99				FY 1999-00				FY 2000-01			
	No. of New Admissions	%	ADP	LOS (days)	No. of New Admissions	%	ADP	LOS (days)	No. of New Admissions	%	ADP	LOS (days)
<b>SEX</b>												
Male	11,657	76.6%	495.1	15.7	11,684	76.4%	483.5	15.4	11,589	77.7%	480.4	15.3
Female	3,555	23.4%	107.4	10.8	3,610	23.6%	105.6	10.9	3,332	22.3%	102.7	11.7
TOTAL	15,212	100.0%	602.4	14.6	15,294	100.0%	589.1	14.3	14,921	100.0%	583.0	14.5
<b>ETHNICITY</b>												
Anglo	6,967	45.8%	286.0	15.1	7,003	45.8%	281.9	14.9	6,490	43.5%	276.4	15.8
African-American	2,297	15.1%	90.3	14.6	2,127	13.9%	75.7	13.3	2,292	15.4%	83.0	13.4
Hispanic/Latino	5,440	35.8%	206.8	13.9	5,712	37.3%	213.8	13.9	5,699	38.2%	206.4	13.5
Native American	170	1.1%	7.0	14.7	120	0.8%	4.8	16.1	134	0.9%	7.0	14.9
Asian-American	126	0.8%	4.9	14.8	133	0.9%	5.1	14.0	133	0.9%	4.0	10.9
Other	212	1.4%	7.4	12.7	199	1.3%	7.8	15.4	173	1.2%	6.2	13.3
<b>AGE AT ADMISSION</b>												
10 Yrs.	25	0.2%	0.6	11.8	28	0.2%	0.7	9.2	25	0.2%	0.6	9.3
11 Yrs.	90	0.6%	2.5	9.3	88	0.6%	2.1	8.9	63	0.4%	1.5	8.8
12 Yrs.	331	2.2%	11.4	12.2	352	2.3%	9.7	10.0	325	2.2%	11.3	12.2
13 Yrs.	1,046	6.9%	38.3	13.6	1,137	7.4%	38.7	12.7	999	6.7%	37.0	13.4
14 Yrs.	2,094	13.8%	82.0	14.7	2,071	13.5%	84.8	15.1	1,970	13.2%	79.8	14.8
15 Yrs.	3,299	21.7%	135.6	15.2	3,262	21.3%	128.3	14.7	3,301	22.1%	132.2	14.9
16 Yrs.	3,865	25.4%	153.9	14.5	3,879	25.4%	156.2	15.1	3,788	25.4%	151.9	14.9
17 Yrs.	4,195	27.6%	162.3	14.2	4,289	28.0%	158.1	13.4	4,277	28.7%	161.1	14.1
18 Yrs.	210	1.4%	12.5	21.4	142	0.9%	7.4	21.7	130	0.9%	5.5	16.9
19 Yrs.	51	0.3%	3.3	26.7	35	0.2%	2.7	30.4	34	0.2%	1.5	17.8
20 Yrs.	6	0.0%	0.0	2.2	10	0.1%	0.4	15.3	9	0.1%	0.5	21.6
Over 20 Yrs.	0	0.0%	0.0	0.0	1	0.0%	0.0	0.5	0	0.0%	0.0	0.0
<b>AVERAGE AGE:</b>	16.0 Yrs.				16.0 Yrs.				16.0 Yrs.			

**DIVISION OF YOUTH CORRECTIONS**

**DETENTION POPULATION BY CHARGE, REASON HELD, AND LEGAL STATUS**

FY 1998-99 through FY 2000-01

CHARGE	FY 1998-99				FY 1999-00				FY 2000-01			
	No. of New Admissions	%	ADP	LOS (days)	No. of New Admissions	%	ADP	LOS (days)	No. of New Admissions	%	ADP	LOS (days)
<b>CHARGE</b>												
Court Order	7,379	48.5%	311.4	15.5	7,731	50.5%	293.7	14.0	7,339	49.2%	294.7	14.4
Courtesy	1,165	7.7%	54.2	17.9	794	5.2%	23.0	12.4	724	4.9%	18.9	11.1
Curfew	0	0.0%	0.0	0.0	1	0.0%	0.0	6.2	0	0.0%	0.0	0.0
Delinquent	4,455	29.3%	194.9	16.1	4,688	30.7%	228.5	18.0	4,377	29.3%	220.4	19.1
Depend. Neglect	21	0.1%	0.5	9.3	14	0.1%	0.3	4.9	35	0.2%	1.4	14.7
Drinking under Age	6	0.0%	0.1	5.6	5	0.0%	0.3	18.7	11	0.1%	0.6	17.8
Game-Fish	8	0.1%	0.2	8.8	7	0.0%	0.1	5.6	4	0.0%	0.1	8.6
Interrupted	758	5.0%	22.1	10.9	1,001	6.5%	29.7	10.9	936	6.3%	27.9	11.1
Park-Municipal	1,015	6.7%	10.7	3.4	666	4.4%	4.4	3.0	898	6.0%	6.4	2.6
Runaway	193	1.3%	4.7	8.6	223	1.5%	6.2	10.0	210	1.4%	8.2	13.9
Traffic	212	1.4%	3.7	4.2	164	1.1%	3.0	6.2	387	2.6%	4.6	4.8
<b>TOTAL</b>	<b>15,212</b>	<b>100%</b>	<b>602.4</b>	<b>14.6</b>	<b>15,294</b>	<b>100%</b>	<b>589.1</b>	<b>14.3</b>	<b>14,921</b>	<b>100%</b>	<b>583.0</b>	<b>14.5</b>
<b>REASON HELD</b>												
Court	7,956	52.3%	300.6	13.8	8,190	53.6%	319.8	14.3	7,221	48.4%	293.0	14.8
DYC	1,457	9.6%	71.5	19.1	1,035	6.8%	33.7	14.8	798	5.3%	27.9	16.1
Parole	162	1.1%	7.8	17.0	254	1.7%	15.5	21.9	288	1.9%	17.8	21.4
Police	3,595	23.6%	135.5	13.8	3,673	24.0%	127.5	12.6	4,699	31.5%	153.4	12.2
Probation	1,748	11.5%	81.3	16.8	1,882	12.3%	85.9	16.8	1,695	11.4%	82.7	17.8
Situational	125	0.8%	1.5	3.4	56	0.4%	0.6	4.1	43	0.3%	0.7	5.7
Social Services	169	1.1%	4.3	9.7	204	1.3%	6.1	10.6	177	1.2%	7.7	15.7
<b>LEGAL STATUS</b>												
<b>Preadjudicated</b>	<b>10,496</b>	<b>69.0%</b>	<b>386.9</b>	<b>11.3</b>	<b>10,167</b>	<b>66.5%</b>	<b>367.3</b>	<b>10.9</b>	<b>10,362</b>	<b>69.4%</b>	<b>335.9</b>	<b>11.8</b>
<b>Sentenced</b>												
Boot Camp Sentence	445	2.9%	68.6	57.8	466	3.0%	77.1	58.9	279	1.9%	53.3	61.0
(# of Completed Sentences)	(372)				(424)				(277)			
Contempt Sentence	237	1.6%	4.8	7.1	319	2.1%	10.9	13.3	391	2.6%	12.0	10.3
(# of Completed Sentences)	(151)				(182)				(362)			
Delinquent Sentence	194	1.3%	6.4	10.5	237	1.5%	8.0	15.4	284	1.9%	10.2	12.6
(# of Completed Sentences)	(136)				(184)				(249)			
Game-Fish Sentence	1	0.0%	0.0	2.2	2	0.0%	0.0	2.0	1	0.0%	0.0	2.0
(# of Completed Sentences)	(1)				(2)				(1)			
Handgun Sentence	22	0.1%	0.3	5.7	23	0.2%	0.2	3.8	9	0.1%	0.1	3.4
(# of Completed Sentences)	(12)				(11)				(7)			
Municipal Sentence	256	1.7%	2.2	4.1	210	1.4%	1.0	2.2	139	0.9%	1.4	3.6
(# of Completed Sentences)	(232)				(191)				(121)			
Probation Sentence	1,606	10.6%	54.6	14.8	2,083	13.6%	70.5	15.6	1,833	12.3%	73.9	14.2
(# of Completed Sentences)	(1,031)				(1,193)				(1,614)			
Traffic Sentence	28	0.2%	0.5	7.4	34	0.2%	1.6	18.1	29	0.2%	0.6	6.9
(# of Completed Sentences)	(22)				(25)				(24)			
<b>Subtotal Sentenced<sup>1</sup></b>	<b>2,789</b>	<b>18.3%</b>	<b>137.4</b>	<b>12.3</b>	<b>3,374</b>	<b>22.1%</b>	<b>169.3</b>	<b>14.3</b>	<b>2,964</b>	<b>19.9%</b>	<b>150.6</b>	<b>8.7</b>
<b>Committed</b>												
New Commitments	1,050	6.9%	2.5	27.7	1,011	6.6%	1.9	22.5	815	5.5%	48.4	25.1
Committed Awaiting Placement	417	2.7%	52.0	22.8	152	1.0%	17.3	26.1	210	1.4%	14.8	25.8
Committed Pending Charges	460	3.0%	23.7	19.9	590	3.9%	33.3	20.3	569	3.8%	33.4	21.4
<b>Subtotal Committed</b>	<b>1,927</b>	<b>12.7%</b>	<b>78.2</b>	<b>24.8</b>	<b>1,753</b>	<b>11.5%</b>	<b>52.5</b>	<b>22</b>	<b>1,594</b>	<b>10.7%</b>	<b>96.6</b>	<b>23.9</b>

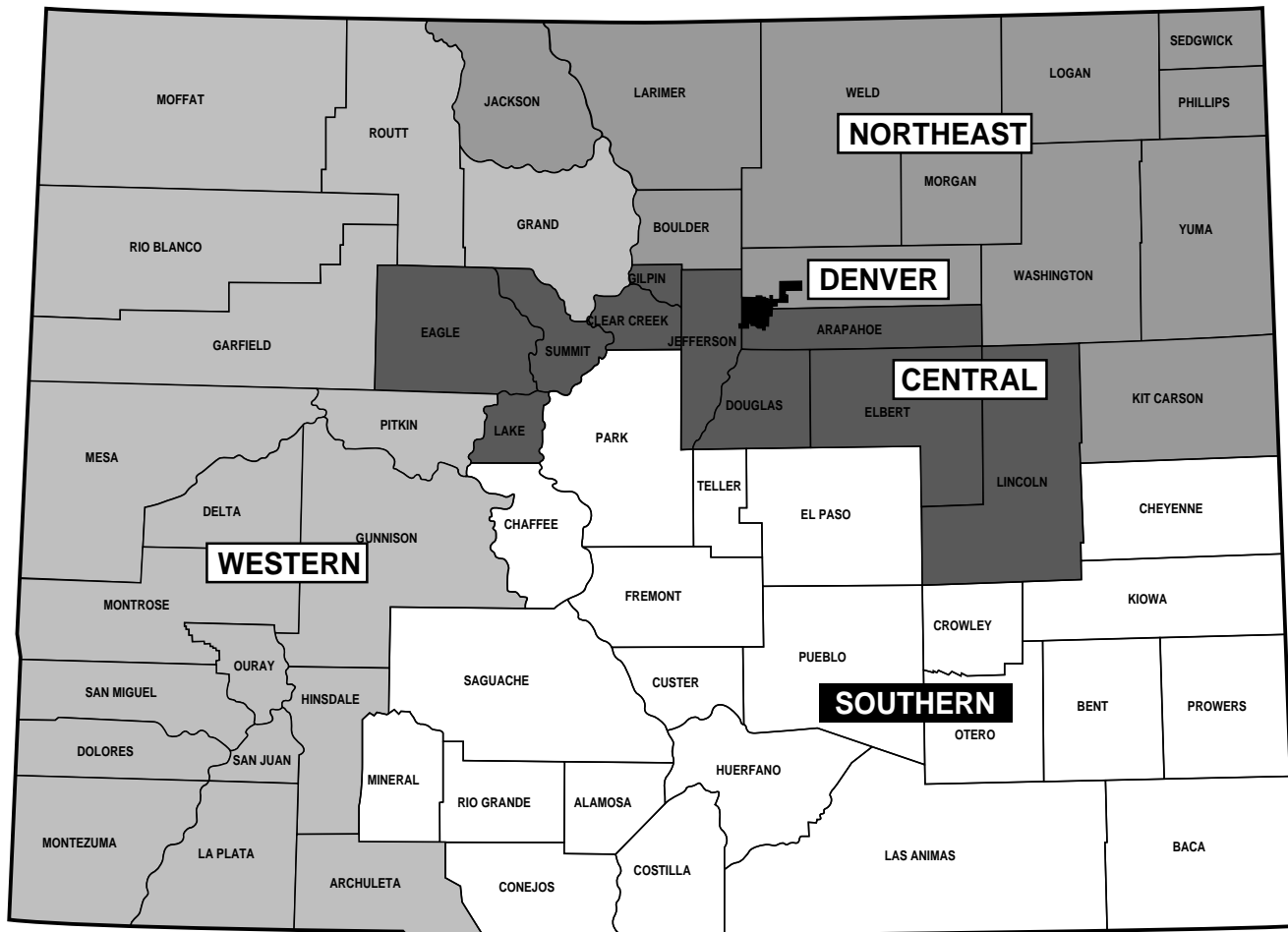
<sup>1</sup>LOS for Boot Camp sentences is excluded from Sentenced Total LOS.

**DIVISION OF YOUTH CORRECTIONS  
DETENTION POPULATION CHARACTERISTICS BY GENDER  
FY1998-99 through FY2000-01**

	MALES						FEMALES					
	FY1998-99		FY1999-00		FY2000-01		FY1998-99		FY1999-00		FY2000-01	
	n	%	n	%	n	%	n	%	n	%	n	%
<b>DEMOGRAPHIC DATA<sup>1</sup></b>												
Ethnicity												
Anglo:	5,264	45.2%	5,205	44.5%	4,939	42.6%	1,703	47.9%	1,798	49.8%	1,551	46.5%
African-American:	1,823	15.6%	1,653	14.1%	1,789	15.4%	474	13.3%	474	13.1%	503	15.1%
Hispanic/Latino:	4,194	36.0%	4,464	38.2%	4,530	39.1%	1,246	35.0%	1,248	34.6%	1,169	35.1%
Native American:	128	1.1%	81	0.7%	92	0.8%	42	1.2%	39	1.1%	42	1.3%
Asian-American:	92	0.8%	123	1.1%	120	1.0%	34	1.0%	10	0.3%	13	0.4%
Other:	156	1.3%	158	1.4%	119	1.0%	56	1.6%	41	1.1%	54	1.6%
<b>TOTAL ADMISSIONS</b>	<b>11,657</b>	<b>100.0%</b>	<b>11,684</b>	<b>100.0%</b>	<b>11,589</b>	<b>100.0%</b>	<b>3,555</b>	<b>100.0%</b>	<b>3,610</b>	<b>100.0%</b>	<b>3,332</b>	<b>100.0%</b>
Age												
10 Years	22	0.2%	26	0.2%	21	0.2%	3	0.1%	2	0.1%	4	0.1%
11 Years	77	0.7%	79	0.7%	56	0.5%	13	0.4%	9	0.2%	7	0.2%
12 Years	243	2.1%	267	2.3%	252	2.2%	88	2.5%	85	2.4%	73	2.2%
13 Years	739	6.3%	824	7.1%	755	6.5%	307	8.6%	313	8.7%	244	7.3%
14 Years	1,503	12.9%	1,519	13.0%	1,399	12.1%	591	16.6%	552	15.3%	571	17.1%
15 Years	2,375	20.4%	2,371	20.3%	2,425	20.9%	924	26.0%	891	24.7%	876	26.3%
16 Years	3,021	25.9%	2,923	25.0%	3,021	26.1%	844	23.7%	956	26.5%	767	23.0%
17 Years	3,440	29.5%	3,518	30.1%	3,511	30.3%	755	21.2%	771	21.4%	766	23.0%
18 Years	184	1.6%	117	1.0%	115	1.0%	26	0.7%	25	0.7%	15	0.5%
19 Years	47	0.4%	32	0.3%	26	0.2%	4	0.1%	3	0.1%	8	0.2%
20 Years	6	0.1%	8	0.1%	8	0.1%	0	0.0%	3	0.1%	1	0.0%
Average Age at Admission:	16.1 Yrs.		16.0 Yrs.		16.1 Yrs.		15.8 Yrs.		15.8 Yrs.		15.8 Yrs.	
<b>DETENTION DATA<sup>1</sup></b>												
Number of Prior Admissions												
None:	3,978	34.1%	3,955	33.8%	3,970	34.3%	1,403	39.5%	1,363	37.8%	1,272	38.2%
One:	2,264	19.4%	2,248	19.2%	2,196	18.9%	721	20.3%	712	19.7%	638	19.1%
Two or more:	5,415	46.5%	5,481	46.9%	5,423	46.8%	1,431	40.3%	1,535	42.5%	1,422	42.7%
Charge												
Court Order:	5,570	47.8%	5,828	49.9%	5,587	48.2%	1,809	50.9%	1,903	52.7%	1,752	52.6%
Courtesy:	1,001	8.6%	654	5.6%	606	5.2%	164	4.6%	140	3.9%	118	3.5%
Curfew:	0	0.0%	0	0.0%	0	0.0%	0	0.0%	1	0.0%	0	0.0%
Delinquent:	3,759	32.2%	3,935	33.7%	3,634	31.4%	696	19.6%	753	20.9%	743	22.3%
Depend-Neg.:	14	0.1%	4	0.0%	24	0.2%	7	0.2%	10	0.3%	11	0.3%
Drinking under Age:	6	0.1%	5	0.0%	7	0.1%	0	0.0%	0	0.0%	4	0.1%
Game-Fish:	7	0.1%	4	0.0%	4	0.0%	1	0.0%	3	0.1%	0	0.0%
Interrupted:	590	5.1%	772	6.6%	739	6.4%	168	4.7%	229	6.3%	197	5.9%
Park-Municipal:	500	4.3%	279	2.4%	615	5.3%	515	14.5%	387	10.7%	283	8.5%
Runaway:	65	0.6%	82	0.7%	69	0.6%	128	3.6%	141	3.9%	141	4.2%
Traffic:	145	1.2%	121	1.0%	304	2.6%	67	1.9%	43	1.2%	83	2.5%
Reason Held												
Court:	5,812	49.9%	6,086	52.1%	5,537	47.8%	2,144	60.3%	2,104	58.3%	1,684	50.5%
DYC:	1,237	10.6%	861	7.4%	671	5.8%	220	6.2%	174	4.8%	127	3.8%
Parole:	143	1.2%	216	1.8%	245	2.1%	19	0.5%	38	1.1%	43	1.3%
Police:	3,018	25.9%	2,984	25.5%	3,752	32.4%	577	16.2%	689	19.1%	947	28.4%
Probation:	1,307	11.2%	1,438	12.3%	1,303	11.2%	441	12.4%	444	12.3%	392	11.8%
Situational:	71	0.6%	33	0.3%	20	0.2%	54	1.5%	23	0.6%	23	0.7%
Social Service:	69	0.6%	66	0.6%	61	0.5%	100	2.8%	138	3.8%	116	3.5%
Legal Status												
<b>Preadjudicated:</b>	<b>7,765</b>	<b>66.6%</b>	<b>7,588</b>	<b>64.9%</b>	<b>7,971</b>	<b>68.8%</b>	<b>2,731</b>	<b>76.8%</b>	<b>2,579</b>	<b>71.4%</b>	<b>2,391</b>	<b>71.8%</b>
<b>Sentenced:</b>												
Boot Camp Sentences:	445	3.8%	466	4.0%	279	2.4%	0	0.0%	0	0.0%	0	0.0%
Contempt Sentences:	143	1.2%	178	1.5%	185	1.6%	94	2.6%	141	3.9%	206	6.2%
Delinquent Sentences:	148	1.3%	178	1.5%	214	1.8%	46	1.3%	59	1.6%	70	2.1%
Game-Fish Sentences:	1	0.0%	1	0.0%	0	0.0%	0	0.0%	1	0.0%	1	0.0%
Handgun Sentences:	21	0.2%	23	0.2%	9	0.1%	1	0.0%	0	0.0%	0	0.0%
Municipal Sentences:	166	1.4%	142	1.2%	93	0.8%	90	2.5%	68	1.9%	46	1.4%
Probation Sentences:	1,278	11.0%	1,604	13.7%	1,443	12.5%	328	9.2%	479	13.3%	390	11.7%
Traffic Sentences:	21	0.2%	27	0.2%	23	0.2%	7	0.2%	7	0.2%	6	0.2%
<b>Subtotal Sentenced:</b>	<b>2,223</b>	<b>19.1%</b>	<b>2,619</b>	<b>22.4%</b>	<b>2,246</b>	<b>19.4%</b>	<b>566</b>	<b>15.9%</b>	<b>755</b>	<b>20.9%</b>	<b>719</b>	<b>21.6%</b>
<b>Committed:</b>												
New Commitment:	910	7.8%	857	7.3%	723	6.2%	140	3.9%	154	4.3%	92	2.8%
Committed awaiting placemer	353	3.0%	108	0.9%	172	1.5%	64	1.8%	44	1.2%	38	1.1%
Committed pending charges	406	3.5%	512	4.4%	477	4.1%	54	1.5%	78	2.2%	92	2.8%
<b>Subtotal Committed:</b>	<b>1,669</b>	<b>14.3%</b>	<b>1,477</b>	<b>12.6%</b>	<b>1,372</b>	<b>11.8%</b>	<b>258</b>	<b>7.3%</b>	<b>276</b>	<b>7.6%</b>	<b>222</b>	<b>6.7%</b>
<b>POPULATION DATA</b>												
Average Daily Population												
Preadjudicated:	308.6		294.8		317.3		78.3		72.6		70.2	
Sentenced:	122.7		147.3		115.6		14.6		21.9		20.9	
Committed:	63.7		41.4		47.5		14.5		11.0		11.6	
Committed Awaiting Placement:	41.2		11.8		18.3		10.9		5.5		6.6	
<b>TOTAL:</b>	<b>495.1</b>		<b>483.5</b>		<b>480.4</b>		<b>107.4</b>		<b>105.6</b>		<b>102.7</b>	
Average Length of Stay (days):	15.7		15.4		15.3		10.8		10.9		11.7	

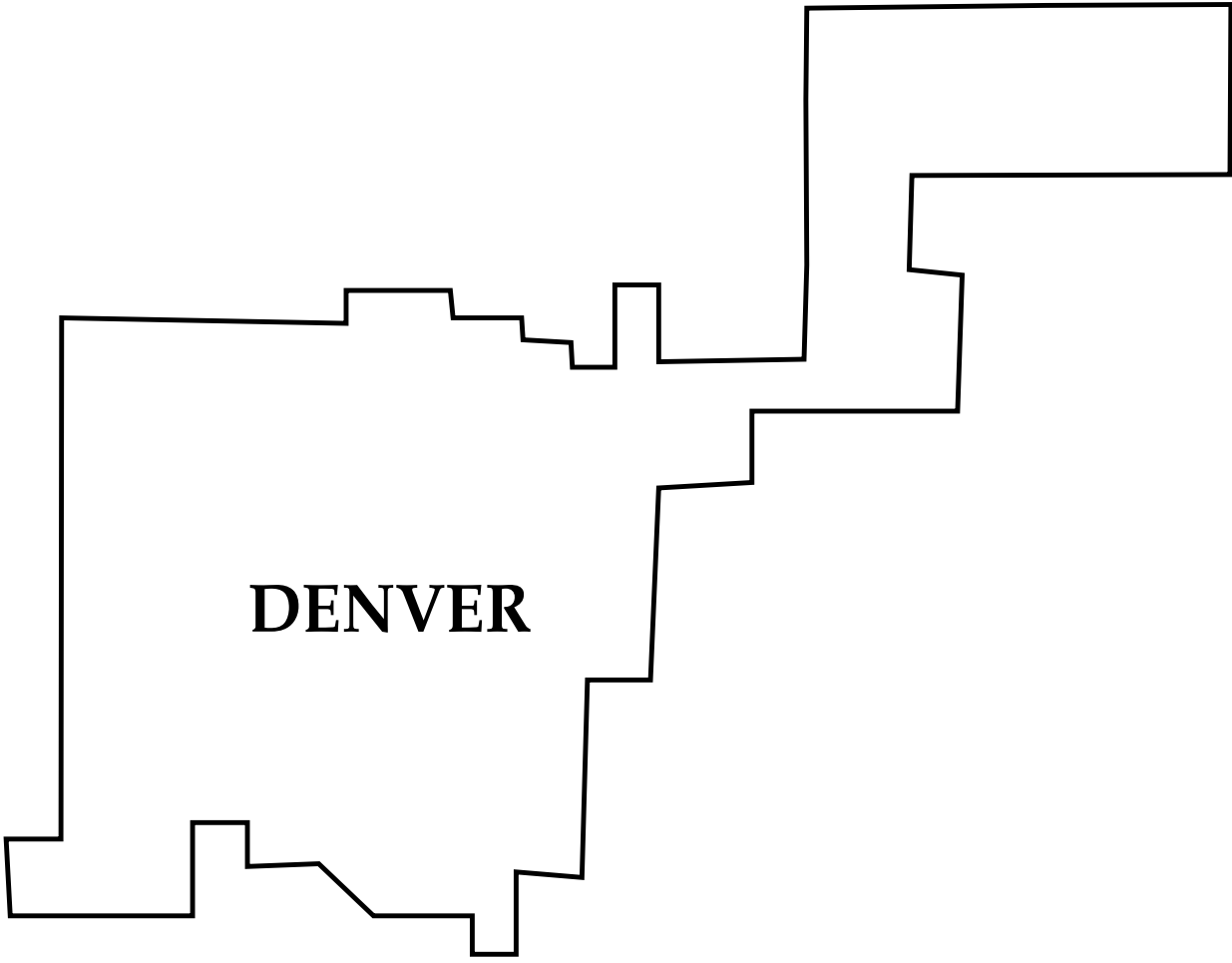
<sup>1</sup>Detention data and demographic data are based on number of admissions. A youth may be admitted more than once during the year.





## SECTION IV

# REGIONAL SUMMARIES



**DENVER**

DENVER REGION

**DENVER REGION  
FY 1999-00 AND FY 2000-01  
COMMITTED YOUTH**

POPULATION DATA	FY 1999-00		FY 2000-01		DEMOGRAPHIC DATA <sup>1</sup>	FY 1999-00		FY 2000-01	
	n	%	n	%		n	%	n	%
Number of New Commitments:	168		127		Sex				
					Male:	135	80%	112	88%
Average Daily Population Assessment:	14.9		8.9		Female:	33	20%	15	12%
Secure/Staff Supervised:	214.1		192.2		TOTAL	168	100%	127	100%
Community Residential:	49.7		47.9						
TOTAL	278.7		251.4		Ethnicity				
Average LOS (months)					Anglo:	13	8%	13	10%
Secure/Staff Supervised:	13.0		13.5		African-American:	52	31%	38	30%
Community Residential:	3.6		5.5		Hispanic/Latino:	98	58%	73	57%
Total Residential:	16.0		17.0		Native-American:	2	1%	2	2%
Total Commitment:	25.8		29.2		Asian-American:	0	0%	1	1%
					Other:	3	2%	0	0%
					TOTAL	168	100%	127	100%
<b>COMMITMENT DATA</b>	<b>n</b>	<b>%</b>	<b>n</b>	<b>%</b>	Age at Commitment:				
Sentence Type <sup>1</sup> :					12 Years	0	0%	0	0%
Non-Mandatory:	143	85%	113	89%	13 Years	3	2%	6	5%
Mandatory:	17	10%	9	7%	14 Years	13	8%	11	9%
Repeat:	5	3%	3	2%	15 Years	43	26%	32	25%
Violent:	1	1%	0	0%	16 Years	49	29%	26	20%
Aggravated Juvenile:	2	1%	2	2%	17 Years	51	30%	46	36%
Adult:	0	0%	0	0%	18 Years	9	5%	5	4%
					19 Years	0	0%	1	1%
TOTAL	168	100%	127	100%	20 Years	0	0%	0	0%
					21 Years	0	0%	0	0%
Commitment Type:					TOTAL	168	100%	127	100%
New Commitments:	168	74%	127	69%	Average Age at Commitment:	16.4 Yrs.		16.4 Yrs.	
Concurrent:	49	22%	51	28%					
Consecutive:	9	4%	6	3%	<b>PAROLE DATA</b>	<b>FY 1999-00</b>		<b>FY 2000-01</b>	
TOTAL	226	100%	184	100%	No. Youth Served on Parole:	221		331	
New Commitment Classification:					Average Daily Population <sup>2</sup> :	105.6		161.7	
Intensive:	33	20%	32	25%	Average LOS on Parole (mos.):	11.6		11.6	
Medium:	64	38%	58	46%	Average Age at Parole Discharge	18.8 Yrs.		18.9 Yrs.	
Community:	71	42%	36	28%	Job/School Status at				
Unknown:	0	0%	1	1%	Time of Parole Discharge <sup>3</sup>	<b>n</b>	<b>%</b>	<b>n</b>	<b>%</b>
TOTAL	168	100%	127	99%	Employed only	18	33%	30	29%
					Enrolled in school only	7	13%	14	13%
					Employed and enrolled in school	10	18%	15	14%
					Unemployed and not in School	19	35%	44	42%
					Unknown	1	2%	1	1%
					TOTAL DISCHARGED	55	100%	104	100%

<sup>1</sup>Data are based on NEW commitments.

<sup>2</sup>Average daily population is the average number of active youth on parole during the time period. Youth on parole who were on escape status during the time period are not included.

<sup>3</sup>Includes only youth who were on parole at time of discharge. Captures job/School status on day of discharge.

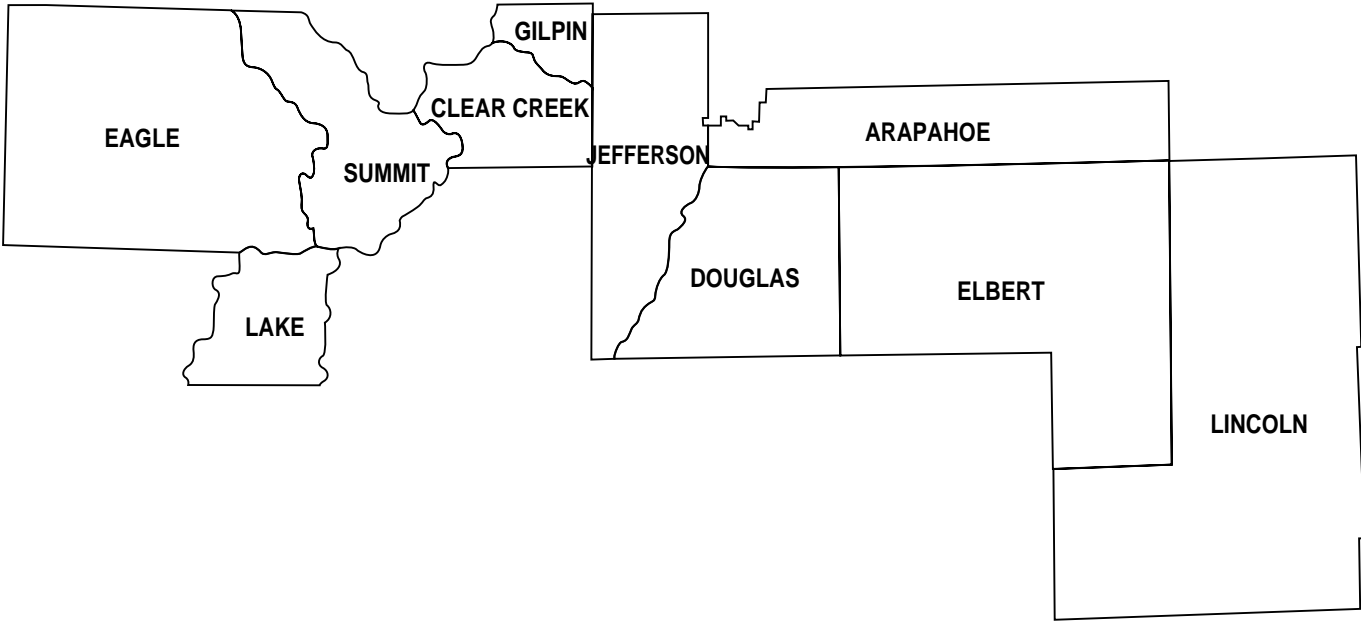


**DENVER REGION  
FY 1999-00 AND FY 2000-01  
DETAINED YOUTH<sup>1</sup>**

	<u>FY 1999-00</u>		<u>FY 2000-01</u>		<u>FY 1999-00</u>		<u>FY 2000-01</u>		
	n	%	n	%	n	%	n	%	
<b>POPULATION DATA</b>					<b>DEMOGRAPHIC DATA</b>				
Number of Intakes:	3,348		3,564						
Number of Admissions:	3,339		3,559						
Average Daily Population:	104.8		106.4						
Average LOS (days):	11.5		11.4						
<b>DETENTION DATA</b>					<b>SEX</b>				
Charge									
Court Order:	1,135	34%	1,042	29%	Male:	2,468	74%	2,735	77%
Courtesy:	353	11%	202	6%	Female:	871	26%	824	23%
Delinquent:	1,327	40%	1,219	34%	TOTAL:	3,339	100%	3,559	100%
Depend-Neg.:	7	0%	27	1%					
Drinking Under Age	0	0%	0	0%	<b>ETHNICITY</b>				
Game-Fish:	1	0%	0	0%	Anglo:	496	15%	515	14%
Interrupted:	62	2%	30	1%	African-American:	1,008	30%	1,163	33%
Park-Municipal:	266	8%	651	18%	Hispanic/Latino:	1,750	52%	1,792	50%
Runaway:	177	5%	150	4%	Native-American:	37	1%	37	1%
Traffic:	11	0%	238	7%	Asian-American:	12	0%	18	1%
TOTAL	3,339	100%	3,559	100%	Other:	36	1%	34	1%
					TOTAL:	3,339	100%	3,559	100%
<b>Reason Held</b>					<b>Age at Admission</b>				
Court:	1,259	38%	888	25%	10 Years	4	0%	2	0%
DYC:	418	13%	231	6%	11 Years	16	0%	16	0%
Parole:	67	2%	87	2%	12 Years	77	2%	90	3%
Police:	1,136	34%	1,978	56%	13 Years	300	9%	262	7%
Probation:	299	9%	227	6%	14 Years	461	14%	495	14%
Situational:	26	1%	19	1%	15 Years	716	21%	766	22%
Social Service:	134	4%	129	4%	16 Years	819	25%	869	24%
TOTAL	3,339	100%	3,559	100%	17 Years	921	28%	1,033	29%
					18 Years	19	1%	22	1%
<b>Legal Status<sup>2</sup></b>					19 Years	5	0%	2	0%
<b>Preadjudicated:</b>	2,444	73%	2,760	78%	20 Years	1	0%	2	0%
					Over 20 Years	0	0%	0	0%
<b>Sentenced:</b>					TOTAL:	3,339	100%	3,559	100%
Boot Camp Sentences:	36	1%	27	1%					
Contempt Sentences:	53	2%	14	0%	<b>Average Age at Admission:</b>				
Delinquent Sentences:	0	0%	5	0%		15.9 Yrs.		16.0 Yrs.	
Game-Fish Sentences:	0	0%	0	0%					
Handgun Sentences:	0	0%	0	0%					
Municipal Sentences:	0	0%	0	0%					
Probation Sentences:	335	10%	360	10%					
Traffic Sentences:	0	0%	0	0%					
<b>Subtotal Sentenced:</b>	424	13%	406	11%					
<b>Committed:</b>									
New Commitments:	315	9%	226	6%					
Committed awaiting placement:	10	0%	7	0%					
Committed pending charges:	146	4%	160	4%					
<b>Subtotal Committed:</b>	471	14%	393	11%					
TOTAL:	3,339	100%	3,559	100%					

<sup>1</sup>Detention data and demographic data are based on number of admissions. A youth may be admitted more than once during the year. Figures include youth from other states/countries admitted to DYC-operated detention centers in this region.

<sup>2</sup>Legal status admission figures have been updated and are slightly different from prior years.



CENTRAL REGION

**CENTRAL REGION  
FY 1999-00 AND FY2000-01  
COMMITTED YOUTH**

POPULATION DATA	FY 1999-00		FY 2000-01		DEMOGRAPHIC DATA <sup>1</sup>	FY 1999-00		FY 2000-01	
	n	%	n	%		n	%	n	%
Number of New Commitments:	172		186		Sex				
Average Daily Population Assessment:	15.5		17.7		Male:	146	85%	161	87%
Secure/Staff Supervised:	203.5		199.5		Female:	26	15%	25	13%
Community Residential:	57.7		59.8		TOTAL	172	100%	186	100%
TOTAL	276.7		286.4		Ethnicity				
Average LOS (months)					Anglo:	109	63%	130	70%
Secure/Staff Supervised:	11.8		13.1		African-American:	23	13%	13	7%
Community Residential:	6.0		5.9		Hispanic/Latino:	31	18%	39	21%
Total Residential:	16.7		17.1		Native-American:	1	1%	0	0%
Total Commitment:	26.9		28.8		Asian-American:	1	1%	1	1%
					Other:	7	4%	3	2%
					TOTAL	172	100%	186	100%
<b>COMMITMENT DATA</b>	<b>n</b>	<b>%</b>	<b>n</b>	<b>%</b>	Age at Commitment:				
Sentence Type <sup>1</sup>					12 Years	1	1%	2	1%
Non-Mandatory:	133	77%	148	80%	13 Years	4	2%	4	2%
Mandatory:	33	19%	35	19%	14 Years	24	14%	15	8%
Repeat:	5	3%	2	1%	15 Years	37	22%	35	19%
Violent:	0	0%	1	1%	16 Years	48	28%	40	22%
Aggravated Juvenile:	1	1%	0	0%	17 Years	53	31%	76	41%
Adult:	0	0%	0	0%	18 Years	5	3%	13	7%
TOTAL	172	100%	186	100%	19 Years	0	0%	1	1%
					20 Years	0	0%	0	0%
					21 Years	0	0%	0	0%
Commitment Type					TOTAL	172	100%	186	100%
New Commitments:	172	75%	186	74%	Average Age at Commitment:	16.3 Yrs.		16.6 Yrs.	
Concurrent:	52	23%	59	24%					
Consecutive:	5	2%	6	2%	<b>PAROLE DATA</b>	<b>FY 1999-00</b>	<b>FY 2000-01</b>		
TOTAL	229	100%	251	100%	No. Youth Served on Parole:	279		353	
New Commitment Classification:					Average Daily Population <sup>2</sup> :	132.6		160.4	
Intensive:	43	25%	56	30%	Average LOS on Parole (mos.):	10.5		11.6	
Medium:	71	41%	79	42%	Average Age at Parole Discharge	18.7 Yrs.		18.8 Yrs.	
Community:	56	33%	51	27%	Job/School Status at				
Unknown	2	1%	0	0%	Time of Parole Discharge <sup>3</sup>	<b>n</b>	<b>%</b>	<b>n</b>	<b>%</b>
TOTAL	172	1	186	100%	Employed only	30	34%	53	37%
					Enrolled in school only	12	13%	15	11%
					Employed and enrolled in school	30	34%	40	28%
					Unemployed and not in School	17	19%	33	23%
					Unknown	0	0%	1	1%
					TOTAL DISCHARGED	89	100%	142	100%

<sup>1</sup>Data are based on NEW commitments.

<sup>2</sup>Average daily population is the average number of active youth on parole during the time period. Youth on parole who were on escape status during the time period are not included.

<sup>3</sup>Includes only youth who were on parole at time of discharge. Captures job/School status on day of discharge.

**CENTRAL REGION  
POPULATION DATA ON COMMITTED YOUTH  
BY COUNTY OF RESIDENCE**

County	FY 1999-00			FY 2000-01		
	New Commits	ADP	Res. LOS (mos.)	New Commits	ADP	Res. LOS (mos.)
Arapahoe	57	107.9	17.9	68	101.2	18.2
Clear Creek	1	1.7	0.0	1	1.6	0.0
Douglas	5	13.0	14.7	12	12.8	21.6
Eagle	6	6.3	8.2	5	4.7	13.3
Elbert	4	3.4	10.1	4	6.3	14.7
Gilpin	0	0.0	0.0	1	0.1	0.0
Jefferson	92	139.7	16.9	83	148.6	16.5
Lake	3	0.7	13.3	2	3.6	5.5
Lincoln	0	0.0	0.0	4	0.4	0.0
Summit	2	1.5	0.0	3	3.7	6.5
Other States/ Countries	2	2.5	23.0	3	3.5	0.0
<b>TOTALS</b>	<b>172</b>	<b>276.7</b>	<b>16.7</b>	<b>186</b>	<b>286.4</b>	<b>17.1</b>

**CENTRAL REGION  
FY 1999-00 AND FY 2000-01  
DETAINED YOUTH<sup>1</sup>**

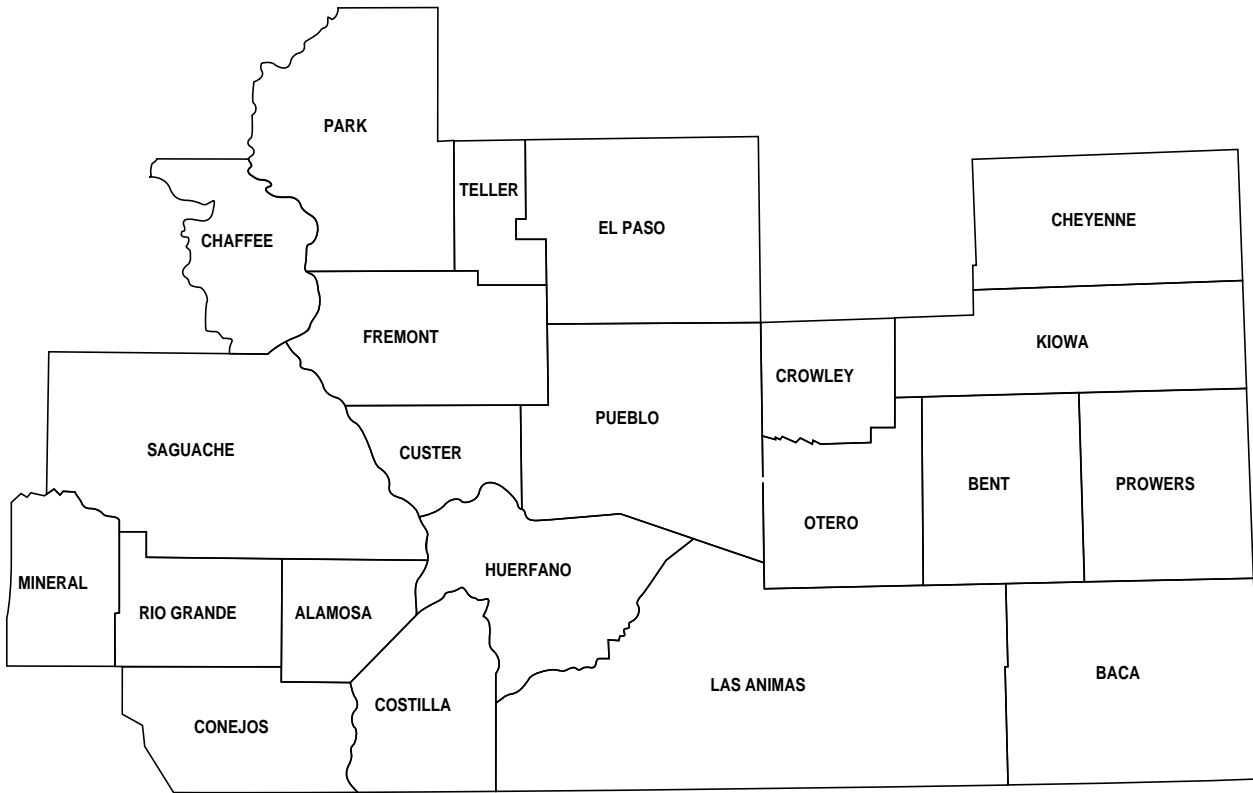
<b>POPULATION DATA</b>	<b>FY 1999-00</b>		<b>FY 2000-01</b>						
Number of Intakes:	3,683		3,527						
Number of Admissions:	3,667		3,494						
Average Daily Population:	140.8		147.3						
Average LOS (days):	14.7		15.7						
<b>DETENTION DATA</b>	<b>n</b>	<b>%</b>	<b>n</b>	<b>%</b>					
Charge									
Court Order:	2,034	55%	2,006	57%					
Courtesy:	113	3%	51	1%					
Delinquent:	1,095	30%	1,094	31%					
Depend-Neg.:	1	0%	5	0%					
Drinking Under Age:	1	0%	1	0%					
Game-Fish:	5	0%	3	0%					
Interrupted:	275	7%	210	6%					
Park-Municipal:	84	2%	45	1%					
Runaway:	5	0%	19	1%					
Traffic:	54	1%	60	2%					
<b>TOTAL</b>	<b>3,667</b>	<b>100%</b>	<b>3,494</b>	<b>100%</b>					
Reason Held									
Court:	1,980	54%	1,839	53%					
DYC:	273	7%	203	6%					
Parole:	86	2%	68	2%					
Police:	831	23%	886	25%					
Probation:	488	13%	482	14%					
Situational:	9	0%	8	0%					
Social Service:	0	0%	8	0%					
<b>TOTAL</b>	<b>3,667</b>	<b>100%</b>	<b>3,494</b>	<b>100%</b>					
Legal Status <sup>2</sup>									
<b>Preadjudicated:</b>	2,156	59%	2,199	63%					
<b>Sentenced:</b>									
Boot Camp Sentences:	57	2%	45	1%					
Contempt Sentences:	219	6%	294	8%					
Delinquent Sentences:	44	1%	75	2%					
Game-Fish Sentences:	2	0%	1	0%					
Handgun Sentences:	17	0%	5	0%					
Municipal Sentences:	37	1%	30	1%					
Probation Sentences:	655	18%	447	13%					
Traffic Sentences:	11	0%	10	0%					
<b>Subtotal Sentenced:</b>	<b>1,042</b>	<b>28%</b>	<b>907</b>	<b>26%</b>					
<b>Committed:</b>									
New Commitments:	258	7%	213	6%					
Committed awaiting placement:	17	0%	27	1%					
Committed pending charges:	194	5%	148	4%					
<b>Subtotal Committed:</b>	<b>469</b>	<b>13%</b>	<b>388</b>	<b>11%</b>					
<b>TOTAL:</b>	<b>3,667</b>	<b>100%</b>	<b>3,494</b>	<b>100%</b>					
					<b>DEMOGRAPHIC DATA</b>				
					<b>n</b>	<b>%</b>	<b>n</b>	<b>%</b>	
					<b>Sex</b>				
					Male:	2,696	74%	2,648	76%
					Female:	971	26%	846	24%
					<b>TOTAL:</b>	<b>3,667</b>	<b>100%</b>	<b>3,494</b>	<b>100%</b>
					<b>Ethnicity</b>				
					Anglo:	2,304	63%	2,076	59%
					African-American:	464	13%	504	14%
					Hispanic/Latino:	760	21%	789	23%
					Native-American:	29	1%	26	1%
					Asian-American:	38	1%	34	1%
					Other:	72	2%	65	2%
					<b>TOTAL:</b>	<b>3,667</b>	<b>100%</b>	<b>3,494</b>	<b>100%</b>
					<b>Age at Admission</b>				
					10 Years	10	0%	4	0%
					11 Years	21	1%	7	0%
					12 Years	68	2%	63	2%
					13 Years	212	6%	196	6%
					14 Years	486	13%	457	13%
					15 Years	800	22%	821	23%
					16 Years	920	25%	899	26%
					17 Years	1,061	29%	976	28%
					18 Years	63	2%	51	1%
					19 Years	20	1%	16	0%
					20 Years	5	0%	4	0%
					Over 20 Years	1	0%	0	0%
					<b>TOTAL:</b>	<b>3,667</b>	<b>100%</b>	<b>3,494</b>	<b>100%</b>
					<b>Average Age at Admission:</b>		16.1 Yrs.		16.1 Yrs.

<sup>1</sup>Detention data and demographic data are based on number of admissions. A youth may be admitted more than once during the year. Figures include youth from other states/countries admitted to DYC-operated detention centers in this region.

<sup>2</sup>Legal status admission figures have been updated and are slightly different from prior years.

**CENTRAL REGION  
POPULATION DATA ON DETAINED YOUTH  
BY COUNTY**

County of Offense	FY 1999-00			FY 2000-01		
	Admissions	ADP	LOS (Days)	Admissions	ADP	LOS (Days)
Arapahoe	1,618	55.5	13.4	1,690	62.8	13.8
Clear Creek	13	2.1	37.2	13	0.6	13.7
Douglas	230	9.7	16.4	223	11.5	19.6
Eagle	39	2.4	21.2	30	2.8	32.3
Elbert	31	1.6	16.8	25	2.2	26.7
Gilpin	8	0.5	20.4	7	0.6	30.3
Jefferson	1,662	66.4	15.2	1,411	62.1	16.6
Lake	23	1.0	16.7	24	1.6	24.8
Lincoln	6	0.6	39.2	22	1.3	29.3
Summit	22	0.7	16.2	34	1.3	14.3
Other States/ Countries	15	0.4	12.5	15	0.4	7.8
<b>TOTALS</b>	<b>3,667</b>	<b>140.8</b>	<b>14.7</b>	<b>3,494</b>	<b>147.3</b>	<b>15.7</b>



SOUTHERN REGION

SOUTHERN REGION

**SOUTHERN REGION  
FY 1999-00 AND FY 2000-01  
COMMITTED YOUTH**

POPULATION DATA	FY 1999-00		FY 2000-01		DEMOGRAPHIC DATA <sup>1</sup>	FY 1999-00		FY 2000-01	
	n	%	n	%		n	%	n	%
Number of New Commitments:	200		158		Sex				
Average Daily Population Assessment:	22.6		12.3		Male:	177	89%	143	91%
Secure/Staff Supervised:	183.6		196.8		Female:	23	12%	15	9%
Community Residential:	44.5		54.0		TOTAL	200	100%	158	100%
TOTAL	250.7		264.6		Ethnicity				
Average LOS (months)					Anglo:	99	50%	74	47%
Secure/Staff Supervised:	10.7		12.9		African-American:	17	9%	25	16%
Community Residential:	5.0		4.6		Hispanic/Latino:	77	39%	57	36%
Total Residential:	14.9		15.8		Native-American:	1	1%	1	1%
Total Commitment:	27.0		28.1		Asian-American:	2	1%	0	0%
					Other:	4	2%	1	1%
					TOTAL	200	100%	158	100%
<b>COMMITMENT DATA</b>	<b>n</b>	<b>%</b>	<b>n</b>	<b>%</b>	Age at Commitment:				
Type of Commitment <sup>1</sup>					12 Years	2	1%	2	1%
Non-Mandatory:	142	71%	115	73%	13 Years	8	4%	8	5%
Mandatory:	49	25%	38	24%	14 Years	17	9%	19	12%
Repeat:	7	4%	3	2%	15 Years	49	25%	27	17%
Violent:	0	0%	2	1%	16 Years	51	26%	48	30%
Aggravated Juvenile:	2	1%	0	0%	17 Years	63	32%	51	32%
Adult:	0	0%	0	0%	18 Years	7	4%	3	2%
					19 Years	1	1%	0	0%
TOTAL	200	100%	158	100%	20 Years	2	1%	0	0%
					21 Years	0	0%	0	0%
					TOTAL	200	100%	158	100%
Breakdown of Sentences					Average Age at Commitment:	16.3 Yrs.		16.3 Yrs.	
New Commitments:	200	78%	158	75%					
Concurrent:	51	20%	37	18%					
Consecutive:	6	2%	15	7%					
TOTAL	257	100%	210	100%					
<b>PAROLE DATA</b>					<b>FY 1999-00</b>			<b>FY 2000-01</b>	
New Commitment					No. Youth Served on Parole:	320		347	
Classification:					Average Daily Population <sup>2</sup> :	154.4		166.9	
Intensive:	54	27%	44	28%	Average LOS on Parole (mos.):	11.3		11.9	
Medium:	97	49%	77	49%	Average Age at Parole Discharge	18.5 Yrs.		18.8 Yrs.	
Community:	48	24%	37	23%					
Unknown	1	1%	0	0%	Job/School Status at				
TOTAL	200	100%	158	100%	Time of Parole Discharge <sup>3</sup>	<b>n</b>	<b>%</b>	<b>n</b>	<b>%</b>
					Employed only	45	43%	40	33%
					Enrolled in school only	16	15%	9	7%
					Employed and enrolled in school	18	17%	28	23%
					Unemployed and not in School	25	24%	45	37%
					Unknown	0	0%	1	1%
					TOTAL DISCHARGED	104	100%	123	100%

<sup>1</sup>Data are based on NEW commitments.

<sup>2</sup>Average daily population is the average number of active youth on parole during the time period. youth on parole who were on escape status during the time period are not included.

<sup>3</sup>Includes only youth who were on parole at time of discharge. Captures job/School status on day of discharge.



**SOUTHERN REGION  
POPULATION DATA ON COMMITTED YOUTH  
BY COUNTY OF RESIDENCE**

County	FY 1999-00			FY 2000-01		
	New Commits	Res. ADP	Res. LOS (mos.)	New Commits	Res. ADP	Res. LOS (mos.)
Alamosa	3	6.0	14.5	3	3.3	12.9
Baca	0	0.0	0.0	0	0.0	0.0
Bent	2	2.1	0.0	1	1.7	11.5
Chaffee	4	1.8	7.0	1	3.3	0.0
Cheyenne	0	0.0	0.0	0	0.0	0.0
Conejos	1	1.2	10.2	2	2.5	9.4
Costilla	0	0.4	7.7	0	0.0	0.0
Crowley	1	1.3	0.0	0	0.4	14.3
Custer	1	0.4	0.0	0	0.3	0.0
El Paso	96	145.7	16.6	88	155.3	18.1
Fremont	13	13.4	15.4	11	12.6	12.8
Huerfano	5	5.7	14.8	3	4.3	14.8
Kiowa	0	0.0	0.0	0	0.0	0.0
Las Animas	2	4.0	11.7	3	4.4	16.4
Mineral	0	0.0	0.0	0	0.0	0.0
Otero	16	18.4	15.0	10	20.8	13.4
Park	5	4.5	10.7	0	3.6	11.7
Prowers	8	6.7	9.9	4	10.1	7.9
Pueblo	35	29.2	12.8	27	32.3	13.7
Rio Grande	2	0.8	15.6	1	1.6	0.0
Saguache	1	0.3	8.2	1	0.8	0.0
Teller	5	7.7	19.9	2	7.3	22.5
Other States/ Countries	0	1.1	14.3	1	0.1	13.4
<b>TOTALS</b>	<b>200</b>	<b>250.7</b>	<b>14.9</b>	<b>158</b>	<b>264.6</b>	<b>15.8</b>

**SOUTHERN REGION  
FY 1999-00 AND FY 2000-01  
DETAINED YOUTH<sup>1</sup>**

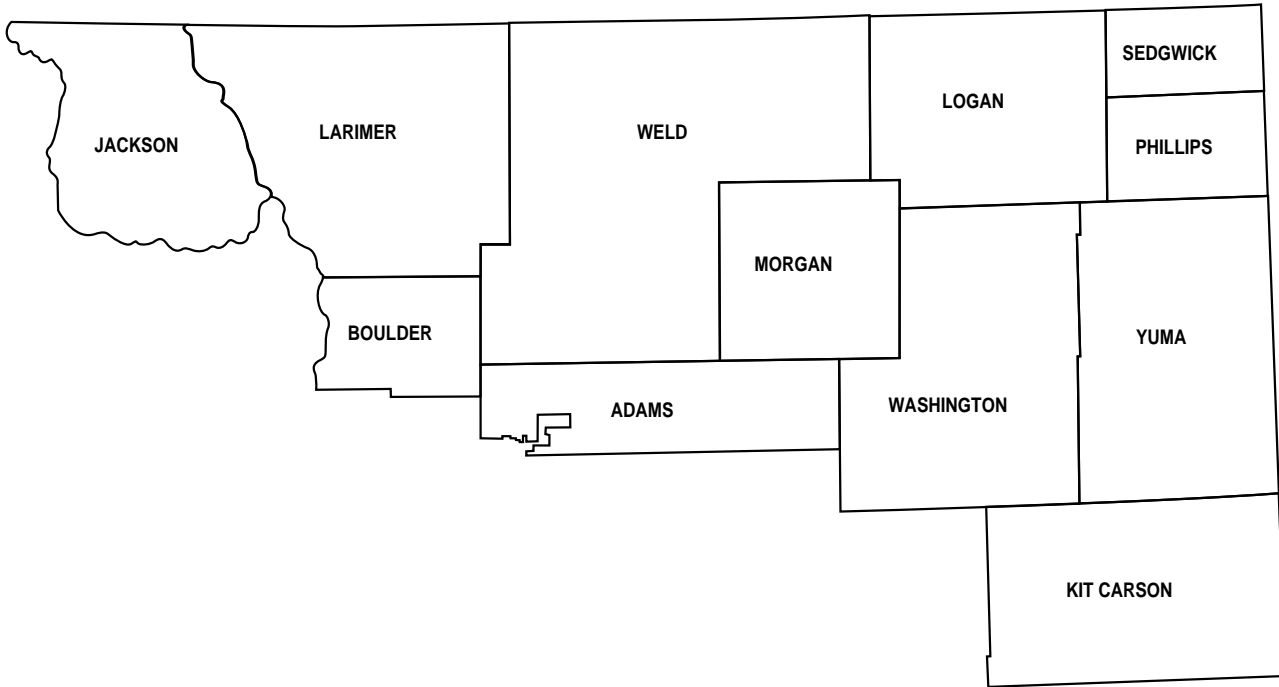
POPULATION DATA	FY 1999-00		FY 2000-01		DEMOGRAPHIC DATA	FY 1999-00		FY 2000-01	
	n	%	n	%		n	%	n	%
Number of Intakes:	4,117		3,811						
Number of Admissions:	4,108		3,780						
Average Daily Population:	174.9		155.7						
Average LOS (days):	15.6		15.5						
<b>DETENTION DATA</b>	<b>n</b>	<b>%</b>	<b>n</b>	<b>%</b>					
Charge									
Court Order:	1,957	48%	1,865	49%					
Courtesy:	275	7%	407	11%					
Delinquent:	1,276	31%	1,005	27%					
Depend-Neg.:	1	0%	1	0%					
Drinking Under Age:	4	0%	9	0%					
Game-Fish:	0	0%	0	0%					
Interrupted:	256	6%	243	6%					
Park-Municipal:	270	7%	163	4%					
Runaway:	10	0%	20	1%					
Traffic:	59	1%	67	2%					
<b>TOTAL</b>	<b>4,108</b>	<b>100%</b>	<b>3,780</b>	<b>100%</b>					
Reason Held									
Court:	2,074	50%	1,881	50%					
DYC:	282	7%	284	8%					
Parole:	67	2%	73	2%					
Police:	1,004	24%	987	26%					
Probation:	634	15%	523	14%					
Situational:	7	0%	8	0%					
Social Service:	40	1%	24	1%					
<b>TOTAL</b>	<b>4,108</b>	<b>100%</b>	<b>3,780</b>	<b>100%</b>					
Legal Status <sup>2</sup>									
<b>Preadjudicated:</b>	2,517	61%	2,442	65%					
<b>Sentenced:</b>									
Boot Camp Sentences	209	5%	106	3%					
Contempt Sentences:	39	1%	74	2%					
Delinquent Sentences:	164	4%	164	4%					
Game-Fish Sentences:	0	0%	0	0%					
Handgun Sentences:	1	0%	0	0%					
Municipal Sentences:	144	4%	78	2%					
Probation Sentences:	493	12%	385	10%					
Traffic Sentences:	4	0%	14	0%					
<b>Subtotal Senteced:</b>	1,054	26%	821	22%					
<b>Committed:</b>									
New Commitments:	262	6%	219	6%					
Committed awaiting placement:	110	3%	153	4%					
Committed pending charges:	165	4%	145	4%					
<b>Subtotal Committed:</b>	537	13%	517	14%					
<b>TOTAL:</b>	<b>4,108</b>	<b>100%</b>	<b>3,780</b>	<b>100%</b>					
					Age at Admission				
					10 Years	7	0%	12	0%
					11 Years	35	1%	25	1%
					12 Years	115	3%	110	3%
					13 Years	283	7%	263	7%
					14 Years	519	13%	452	12%
					15 Years	875	21%	839	22%
					16 Years	1,066	26%	955	25%
					17 Years	1,153	28%	1,062	28%
					18 Years	43	1%	47	1%
					19 Years	9	0%	13	0%
					20 Years	3	0%	2	0%
					Over 20 Years	0	0%	0	0%
					<b>TOTAL:</b>	<b>4,108</b>	<b>100%</b>	<b>3,780</b>	<b>100%</b>
					Average Age at Admission:	16.0 Yrs.		16.0 Yrs.	

<sup>1</sup>Detention data and demographic data are based on number of admissions. A youth may be admitted more than once during the year. Figures include youth from other states/countries admitted to DYC-operated detention centers in this region.

<sup>2</sup>Legal status admission figures have been updated and are slightly different from prior years.

**SOUTHERN REGION  
POPULATION DATA ON DETAINED YOUTH  
BY COUNTY**

County of Offense	FY 1999-00			FY 2000-01		
	Admissions	ADP	LOS (Days)	Admissions	ADP	LOS (Days)
Alamosa	89	5.0	20.7	104	3.8	13.4
Baca	2	0.2	44.1	5	0.6	42.4
Bent	10	0.8	28.1	19	0.9	16.7
Chaffee	47	1.0	8.2	38	1.1	11.4
Cheyenne	0	0.0	0.0	4	0.2	20.6
Conejos	36	0.8	9.7	24	0.6	8.7
Costilla	13	0.4	15.4	17	0.2	4.7
Crowley	13	0.5	14.8	8	0.0	1.9
Custer	4	0.0	3.5	3	0.0	2.4
El Paso	2,061	88.3	15.5	1,751	77.5	16.8
Fremont	247	8.2	12.6	245	8.7	12.9
Huerfano	30	1.8	21.7	29	1.5	19.1
Kiowa	0	0.0	0.0	0	0.0	0.0
Las Animas	46	2.6	22.9	34	2.4	25.2
Mineral	0	0.0	0.0	0	0.0	0.0
Otero	128	6.0	18.8	140	7.1	18.7
Park	47	1.6	12.9	40	2.0	18.7
Prowers	40	2.8	28.8	55	5.1	31.8
Pueblo	1,074	49.0	16.7	874	36.3	15.5
Rio Grande	39	1.3	11.1	49	2.1	16.0
Saguache	7	0.2	10.8	29	0.9	11.0
Teller	47	2.5	19.5	57	3.0	21.3
Other States/ Countries	128	1.6	4.8	255	1.7	3.1
<b>TOTALS</b>	<b>4,108</b>	<b>174.9</b>	<b>15.6</b>	<b>3,780</b>	<b>155.7</b>	<b>15.5</b>



NORTHEAST  
REGION

# NORTHEAST REGION

**NORTHEAST REGION  
FY 1999-00 AND FY 2000-01  
COMMITTED YOUTH**

POPULATION DATA	FY 1999-00		FY 2000-01		DEMOGRAPHIC DATA <sup>1</sup>	FY 1999-00		FY 2000-01	
	n	%	n	%		n	%	n	%
Number of New Commitments:	208		201		Sex				
Average Daily Population Assessment:	17.0		17.5		Male:	187	90%	180	90%
Secure/Staff Supervised:	202.4		243.2		Female:	21	10%	21	10%
Community Residential:	40.2		46.7		TOTAL	208	100%	201	100%
TOTAL	259.6		313.0		Ethnicity				
Average LOS (months)					Anglo:	102	49%	108	54%
Secure/Staff Supervised:	12.7		13.4		African-American:	11	5%	9	4%
Community Residential:	4.8		4.7		Hispanic/Latino:	91	44%	81	40%
Total Residential:	16.2		16.1		Native-American:	1	0%	0	0%
Total Commitment:	25.8		27.6		Asian-American:	2	1%	0	0%
					Other:	1	0%	3	1%
					TOTAL	208	100%	201	100%
<b>COMMITMENT DATA</b>	<b>n</b>	<b>%</b>	<b>n</b>	<b>%</b>	Age at Commitment:				
Type of Commitment <sup>1</sup>					12 Years	1	0%	0	0%
Non-Mandatory:	123	59%	121	60%	13 Years	10	5%	7	3%
Mandatory:	56	27%	61	30%	14 Years	21	10%	24	12%
Repeat:	13	6%	7	3%	15 Years	38	18%	44	22%
Violent:	2	1%	4	2%	16 Years	60	29%	59	29%
Aggravated Juvenile:	14	7%	8	4%	17 Years	65	31%	61	30%
Adult:	0	0%	0	0%	18 Years	12	6%	5	2%
TOTAL	208	100%	201	100%	19 Years	1	0%	1	0%
Breakdown of Sentences					20 Years	0	0%	0	0%
New Commitments:	208	78%	201	74%	21 Years	0	0%	0	0%
Concurrent:	53	20%	65	24%	TOTAL	208	100%	201	100%
Consecutive:	7	3%	7	3%	Average Age at Commitment:	16.4 Yrs.		16.3 Yrs.	
TOTAL	268	100%	273	100%	<b>PAROLE DATA</b>	<b>FY 1999-00</b>	<b>FY 2000-01</b>		
New Commitment					No. Youth Served on Parole:	236		300	
Classification:					Average Daily Population <sup>2</sup> :	115.7		140.9	
Intensive:	62	30%	54	27%	Average LOS on Parole (mos.):	10.1		11.9	
Medium:	97	47%	93	46%	Average Age at Parole Discharge	18.6 Yrs.		18.8 Yr.	
Community:	48	23%	52	26%	Job/School Status at				
Unknown	1	0%	2	1%	Time of Parole Discharge <sup>3</sup>	<b>n</b>	<b>%</b>	<b>n</b>	<b>%</b>
TOTAL	208	100%	201	100%	Employed only	32	41%	40	37%
					Enrolled in school only	12	15%	10	9%
					Employed and enrolled in school	16	20%	19	18%
					Unemployed and not in School	19	24%	38	36%
					Unknown	0	0%	0	0%
					TOTAL DISCHARGED	79	100%	107	100%

<sup>1</sup>Data are based on NEW commitments.

<sup>2</sup>Average daily population is the average number of active youth on parole during the time period. Youth on parole who were on escape status during the time period are not included.

<sup>3</sup>Includes only youth who were on parole at time of discharge. Captures job/School status on day of discharge.

**NORTHEAST REGION  
POPULATION DATA ON COMMITTED YOUTH  
BY COUNTY OF RESIDENCE**

County	FY 1999-00			FY 2000-01		
	New Commits	Res. ADP	Res. LOS (mos.)	New Commits	Res. ADP	Res. LOS (mos.)
Adams	66	97.5	16.6	73	105.0	16.3
Boulder	19	29.0	17.5	12	30.4	17.0
Jackson	1	1.5	24.0	0	1.0	5.6
Kit Carson	0	0.0	0.0	0	0.0	0.0
Larimer	49	60.4	16.2	52	74.9	17.8
Logan	3	1.1	11.4	1	2.7	0.0
Morgan	5	4.9	16.8	4	5.9	14.4
Phillips	0	0.0	0.0	0	0.0	0.0
Sedgwick	0	0.0	0.0	1	0.2	0.0
Washington	1	0.4	0.0	1	0.1	0.0
Weld	63	63.5	14.9	56	92.1	15.1
Yuma	0	0.2	8.3	1	0.2	7.9
Other States/ Countries	1	1.1	0.0	0	0.6	25.5
<b>TOTALS</b>	<b>208</b>	<b>259.6</b>	<b>16.2</b>	<b>201</b>	<b>313.0</b>	<b>16.1</b>

**NORTHEAST REGION  
FY 1999-00 AND FY 2000-01  
DETAINED YOUTH<sup>1</sup>**

POPULATION DATA	FY 1999-00		FY 2000-01		DEMOGRAPHIC DATA	FY 1999-00		FY 2000-01	
	n	%	n	%		n	%	n	%
Number of Intakes:	3,229		3,204						
Number of Admissions:	3,197		3,178		Sex				
Average Daily Population:	118.5		120.0		Male:	2,559	80%	2,588	81%
Average LOS (days):	14.0		13.6		Female:	638	20%	590	19%
<b>DETENTION DATA</b>	<b>n</b>	<b>%</b>	<b>n</b>	<b>%</b>	<b>TOTAL:</b>	<b>3,197</b>	<b>100%</b>	<b>3,178</b>	<b>100%</b>
Charge									
Court Order:	2,056	64%	1,906	60%	Ethnicity				
Courtesy:	36	1%	52	2%	Anglo:	1,624	51%	1,606	51%
Delinquent:	615	19%	708	22%	African-American:	159	5%	190	6%
Depend-Neg.:	5	0%	2	0%	Hispanic/Latino:	1,321	41%	1,277	40%
Drinking Under Age:	0	0%	0	0%	Native-American:	17	1%	25	1%
Game-Fish:	1	0%	1	0%	Asian-American:	59	2%	54	2%
Interrupted:	385	12%	433	14%	Other:	17	1%	26	1%
Park-Municipal:	45	1%	39	1%	<b>TOTAL:</b>	<b>3,197</b>	<b>100%</b>	<b>3,178</b>	<b>100%</b>
Runaway:	28	1%	20	1%					
Traffic:	26	1%	17	1%					
<b>TOTAL</b>	<b>3,197</b>	<b>100%</b>	<b>3,178</b>	<b>100%</b>	Age at Admission				
Reason Held					10 Years	2	0%	6	0%
Court:	2,283	71%	2,128	67%	11 Years	10	0%	11	0%
DYC:	49	2%	78	2%	12 Years	73	2%	48	2%
Parole:	27	1%	55	2%	13 Years	288	9%	208	7%
Police:	470	15%	598	19%	14 Years	463	14%	477	15%
Probation:	327	10%	299	9%	15 Years	665	21%	716	23%
Situational:	11	0%	4	0%	16 Years	825	26%	804	25%
Social Service:	30	1%	16	1%	17 Years	859	27%	890	28%
<b>TOTAL</b>	<b>3,197</b>	<b>100%</b>	<b>3,178</b>	<b>100%</b>	18 Years	10	0%	14	0%
Legal Status <sup>2</sup>					19 Years	1	0%	3	0%
<b>Preadjudicated:</b>	<b>2,374</b>	<b>74%</b>	<b>2,319</b>	<b>73%</b>	20 Years	1	0%	1	0%
<b>Sentenced:</b>					Over 20 Years	0	0%	0	0%
Boot Camp Sentences:	104	3%	62	2%	<b>TOTAL:</b>	<b>3,197</b>	<b>100%</b>	<b>3,178</b>	<b>100%</b>
Contempt Sentences:	8	0%	8	0%					
Delinquent Sentences:	21	1%	38	1%	Average Age at Admission:	15.9 Yrs.		16.0 Yrs.	
Game-Fish Sentences:	0	0%	0	0%					
Handgun Sentences:	3	0%	4	0%					
Municipal Sentences:	27	1%	31	1%					
Probation Sentences:	435	14%	466	15%					
Traffic Sentences:	7	0%	2	0%					
<b>Subtotal Sentenced:</b>	<b>605</b>	<b>19%</b>	<b>611</b>	<b>19%</b>					
<b>Committed:</b>									
New Commitments:	144	5%	122	4%					
Committed pending placement:	10	0%	23	1%					
Committed pending charges:	64	2%	103	3%					
<b>Subtotal Committed:</b>	<b>218</b>	<b>7%</b>	<b>248</b>	<b>8%</b>					
<b>TOTAL:</b>	<b>3,197</b>	<b>100%</b>	<b>3,178</b>	<b>100%</b>					

<sup>1</sup>Detention data and demographic data are based on number of admissions. A youth may be admitted more than once during the year. Figures include youth from other states/countries admitted to DYC-operated detention centers in this region.

<sup>2</sup>Legal status admission figures have been updated and are slightly different from prior years.

**NORTHEAST REGION  
POPULATION DATA ON DETAINED YOUTH  
BY COUNTY**

County of Offense	FY 1999-00			FY 2000-01		
	Admisssions	ADP	LOS (Days)	Admisssions	ADP	LOS (Days)
Adams	739	30.9	16.8	822	35.6	15.6
Boulder	916	25.6	10.3	827	23.4	10.4
Jackson	3	0.2	22.9	0	0.0	0.0
Kit Carson	4	0.2	16.3	6	0.4	18.0
Larimer	574	22.0	14.0	585	26.0	15.9
Logan	73	5.2	25.5	75	4.5	21.0
Morgan	105	6.5	24.8	94	4.8	17.4
Phillips	0	0.0	0.0	2	0.2	31.6
Sedgwick	0	0.0	0.0	1	0.0	0.2
Washington	7	0.3	18.4	6	0.3	15.8
Weld	757	26.8	12.9	747	24.3	11.6
Yuma	12	0.6	19.0	6	0.6	33.9
Other States/Cou	7	0.1	4.8	7	0.1	6.2
<b>TOTALS</b>	<b>3,197</b>	<b>118.5</b>	<b>14.0</b>	<b>3,178</b>	<b>120.0</b>	<b>13.6</b>





# WESTERN REGION

**WESTERN REGION  
FY 1999-00 AND FY 2000-01  
COMMITTED YOUTH**

POPULATION DATA	FY 1999-00		FY 2000-01		DEMOGRAPHIC DATA <sup>1</sup>	FY 1999-00		FY 2000-01	
	n	%	n	%		n	%	n	%
Number of New Commitments:	100		94		Sex				
ADP					Male:	93	93%	81	86%
Assessment:	8.1		8.9		Female:	7	7%	13	14%
Secure/Staff Supervised:	96.5		106.6		TOTAL	100	100%	94	100%
Community Residential:	27.9		19.7		Ethnicity				
TOTAL	132.6		136.4		Anglo:	66	66%	69	73%
Average LOS (mos.)					African-American:	1	1%	1	1%
Secure/Staff Supervised:	8.7		10.8		Hispanic/Latino:	29	29%	19	20%
Community Residential:	5.4		5.1		Native-American:	1	1%	3	3%
Total Residential:	13.5		14.3		Asian-American:	1	1%	2	2%
Total Commitment:	22.8		24.0		Other:	2	2%	0	0%
					TOTAL	100	100%	94	100%
<b>COMMITMENT DATA</b>	<b>n</b>	<b>%</b>	<b>n</b>	<b>%</b>	Age at Commitment:				
Type of Commitment <sup>1</sup>					12 Years	1	1%	1	1%
Non-Mandatory:	84	84%	73	78%	13 Years	7	7%	3	3%
Mandatory:	4	4%	10	11%	14 Years	13	13%	9	10%
Repeat:	9	9%	11	12%	15 Years	17	17%	11	12%
Violent:	1	1%	0	0%	16 Years	27	27%	30	32%
Aggravated Juvenile:	2	2%	0	0%	17 Years	31	31%	34	36%
Adult:	0	0%	0	0%	18 Years	4	4%	6	6%
					19 Years	0	0%	0	0%
TOTAL	100	100%	94	100%	20 Years	0	0%	0	0%
					21 Years	0	0%	0	0%
					TOTAL	100	100%	94	100%
Breakdown of Sentences					Average Age at Commitment <sup>2</sup> :	16.2 Yrs.		16.5 Yrs.	
New Commitments:	100	81%	94	85%					
Concurrent:	12	10%	12	11%					
Consecutive:	11	9%	5	5%					
TOTAL	123	100%	111	100%					
<b>PAROLE DATA</b>					<b>FY 1999-00</b>			<b>FY 2000-01</b>	
New Commitment					No. Youth Served on Parole:	187		175	
Classification:					Average Daily Population <sup>2</sup> :	93.5		90.9	
Intensive:	26	26%	22	23%	Average LOS on Parole (mos.):	11.4		12.7	
Medium:	40	40%	30	32%	Average Age at Parole Discharge	18.8 Yrs.		18.6 Yrs.	
Community:	33	33%	41	44%	Job/School Status at				
Unknown	1	1%	1	1%	Time of Parole Discharge <sup>3</sup>	<b>n</b>	<b>%</b>	<b>n</b>	<b>%</b>
TOTAL	100	100%	94	100%	Employed only	45	50%	19	28%
					Enrolled in school only	9	10%	14	20%
					Employed and enrolled in school	9	10%	14	20%
					Unemployed and not in School	26	29%	22	32%
					Unknown	1	1%	0	0%
					TOTAL DISCHARGED	90	100%	69	100%

<sup>1</sup>Data are based on NEW commitments.

<sup>2</sup>Average daily population is the average number of active youth on parole during the time period. Youth on parole who were on escape status during the time period are not included.

<sup>3</sup>Includes only youth who were on parole at time of discharge. Captures job/School status on day of discharge.

**WESTERN REGION  
POPULATION DATA ON COMMITTED YOUTH  
BY COUNTY OF RESIDENCE**

County	FY 1999-00			FY 2000-01		
	New Commits	Res. ADP	Res. LOS (mos.)	New Commits	Res. ADP	Res. LOS (mos.)
Archuleta	0	1.7	19.8	2	1.3	20.4
Delta	6	8.6	15.5	7	12.1	10.5
Dolores	1	1.0	10.0	0	1.0	0.0
Garfield	13	19.1	12.3	15	15.9	14.2
Grand	1	2.6	0.0	2	3.5	9.2
Gunnison	0	0.5	11.9	2	0.8	11.7
Hinsdale	0	0.0	0.0	1	0.1	0.0
La Plata	7	13.9	10.8	10	11.5	14.3
Mesa	39	50.8	14.7	38	51.7	15.7
Moffat	2	4.4	12.8	2	4.9	17.5
Montezuma	6	5.6	14.6	2	7.3	13.1
Montrose	18	14.9	11.6	7	18.4	8.9
Ouray	0	1.1	0.0	0	1.0	25.8
Pitkin	2	2.4	0.0	0	1.0	18.7
Rio Blanco	0	0.0	0.0	1	0.4	0.0
Routt	0	2.1	11.4	3	2.1	10.2
San Juan	0	0.0	0.0	0	0.0	0.0
San Miguel	0	2.4	10.6	0	0.3	16.1
Other States/ Countries	5	1.6	6.7	2	3.2	7.5
<b>TOTALS</b>	<b>100</b>	<b>132.6</b>	<b>13.5</b>	<b>94</b>	<b>136.4</b>	<b>14.3</b>

**WESTERN REGION  
FY 1999-00 AND FY 2000-01  
DETAINED YOUTH<sup>1</sup>**

POPULATION DATA	FY 1999-00		FY 2000-01		DEMOGRAPHIC DATA	FY 1999-00		FY 2000-01	
	n	%	n	%		n	%	n	%
Number of Intakes:	990		910						
Number of Admissions:	983		910						
Average Daily Population:	50.1		53.7						
Average LOS (days):	18.1		20.6						
					Sex				
					Male:	788	80%	736	81%
					Female:	195	20%	174	19%
<b>DETENTION DATA</b>	<b>n</b>	<b>%</b>	<b>n</b>	<b>%</b>	<b>TOTAL:</b>	<b>983</b>	<b>100%</b>	<b>910</b>	<b>100%</b>
Charge									
Court Order:	549	56%	520	57%	Ethnicity				
Courtesy:	17	2%	12	1%	Anglo:	716	73%	620	68%
Delinquent:	375	38%	351	39%	African-American:	19	2%	13	1%
Depend-Neg.:	0	0%	0	0%	Hispanic/Latino:	208	21%	228	25%
Drinking Under Age:	1	0%	1	0%	Native-American:	22	2%	34	4%
Game-Fish:	0	0%	0	0%	Asian-American:	9	1%	9	1%
Interrupted:	23	2%	20	2%	Other:	9	1%	6	1%
Park-Municipal:	1	0%	0	0%	<b>TOTAL:</b>	<b>983</b>	<b>100%</b>	<b>910</b>	<b>100%</b>
Runaway:	3	0%	1	0%					
Traffic:	14	1%	5	1%	Age at Admission				
<b>TOTAL</b>	<b>983</b>	<b>100%</b>	<b>910</b>	<b>100%</b>	10 Years	5	1%	1	0%
Reason Held					11 Years	6	1%	4	0%
Court:	594	60%	485	53%	12 Years	19	2%	13	1%
DYC:	13	1%	2	0%	13 Years	54	5%	67	7%
Parole:	7	1%	5	1%	14 Years	142	14%	87	10%
Police:	232	24%	250	27%	15 Years	206	21%	165	18%
Probation:	134	14%	164	18%	16 Years	249	25%	255	28%
Situational:	3	0%	4	0%	17 Years	295	30%	310	34%
Social Service:	0	0%	0	0%	18 Years	7	1%	8	1%
					19 Years	0	0%	0	0%
<b>TOTAL</b>	<b>983</b>	<b>100%</b>	<b>910</b>	<b>100%</b>	20 Years	0	0%	0	0%
Legal Status <sup>2</sup>					Over 20 Years	0	0%	0	0%
<b>Preadjudicated:</b>	676	69%	642	71%	<b>TOTAL:</b>	<b>983</b>	<b>100%</b>	<b>910</b>	<b>100%</b>
<b>Sentenced:</b>									
Boot Camp Sentences:	60	6%	39	4%	Average Age at Admission:	16.1 Yrs.		16.2 Yrs.	
Contempt Sentences:	0	0%	1	0%					
Delinquent Sentences:	8	1%	2	0%					
Game-Fish Sentences:	0	0%	0	0%					
Handgun Sentences:	2	0%	0	0%					
Municipal Sentences:	2	0%	0	0%					
Probation Sentences:	165	17%	175	19%					
Traffic Sentences:	12	1%	3	0%					
<b>Subtotal Sentenced:</b>	<b>249</b>	<b>25%</b>	<b>220</b>	<b>24%</b>					
<b>Committed:</b>									
New Commitments:	32	3%	35	4%					
Committed pending placement:	5	1%	0	0%					
Committed pending charges:	21	2%	13	1%					
<b>Subtotal Committed:</b>	<b>58</b>	<b>6%</b>	<b>48</b>	<b>5%</b>					
<b>TOTAL:</b>	<b>983</b>	<b>100%</b>	<b>910</b>	<b>100%</b>					

<sup>1</sup>Detention data and demographic data are based on number of admissions. A youth may be admitted more than once during the year. Figures include youth from other states/countries admitted to DYC-operated detention centers in this region.

<sup>2</sup>Legal status admission figures have been updated and are slightly different from prior years.

**WESTERN REGION  
POPULATION DATA ON DETAINED YOUTH  
BY COUNTY**

County of Offense	FY 1999-00			FY 2000-01		
	Admissions	ADP	LOS (Days)	Admissions	ADP	LOS (Days)
Archuleta	12	0.8	16.9	31	1.8	19.7
Delta	30	1.4	19.9	34	2.0	21.0
Dolores	0	0.0	0.0	2	0.0	5.3
Garfield	121	5.8	17.7	107	7.1	22.9
Grand	22	1.3	21.9	15	1.4	32.5
Gunnison	12	0.5	12.9	13	0.5	16.3
Hinsdale	2	0.1	17.9	2	0.2	34.0
La Plata	95	7.3	25.3	99	7.7	27.2
Mesa	453	21.0	16.6	417	20.4	17.0
Moffat	50	2.2	16.6	28	1.7	20.1
Montezuma	34	1.7	17.0	44	3.9	30.0
Montrose	52	4.0	27.3	57	3.1	19.5
Ouray	0	0.0	0.0	3	0.2	23.4
Pitkin	30	1.7	19.9	12	0.8	22.0
Rio Blanco	29	0.6	8.7	12	1.0	28.1
Routt	25	1.3	17.0	20	1.7	34.4
San Juan	0	0.0	0.0	1	0.0	16.0
San Miguel	4	0.1	12.9	1	0.0	10.2
Other States/ Countries	12	0.3	7.8	12	0.1	3.7
<b>TOTALS</b>	<b>983</b>	<b>50.1</b>	<b>18.1</b>	<b>910</b>	<b>53.7</b>	<b>20.6</b>