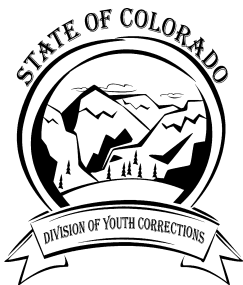


Fiscal Year 1999-2000

Management Reference Manual



**Colorado Department of Human Services**  
**Division of Youth Corrections**

---

*Working with Colorado Communities to Achieve Justice*

October 2000

**This manual provides the information most often requested on DYC client populations. Any questions concerning the data presented in this manual may be directed to Josh Meisel, Research and Evaluation, Division of Youth Corrections, 4255 S. Knox Court, Denver, Colorado, 80236.  
TEL: 303-866-7968 EMAIL: [josh.meisel@state.co.us](mailto:josh.meisel@state.co.us)**

**Division of Youth Corrections artwork designed by students of the Lookout Mountain Youth Services Center silkscreening vocational program.**

**The Division of Youth Corrections can be visited on the World Wide Web at:  
<http://www.cdhs.state.co.us/dyc/Home.htm>**

# STATE OF COLORADO

---

## COLORADO DEPARTMENT OF HUMAN SERVICES

### DIVISION OF YOUTH CORRECTIONS

4255 South Knox Court  
Denver, Colorado 80236  
Phone (303) 866-7345  
FAX (303) 866-7344

Betty K. Marler  
Director



---

Bill Owens  
Governor

Marva Livingston Hammons  
Executive Director

## TO THE READER

The Division of Youth Corrections Management Reference Manual contains population information for fiscal year 1999-00. The Division continues to experience numerous changes due to population growth in both detention and commitment as well as the changing needs of the population served.

The Robert De Nier Youth Services Center, a multipurpose facility for detained and committed youth in Durango, opened in January 2000. Construction is well underway on the Ridge View Youth Services Center, a 500 bed academic model program, and is targeted to open in the summer of 2001.

The Division is developing a new integrated data system in conjunction with the Division of Child Welfare. This new management information system will provide more timely and complete information on client characteristics, programs and client outcomes. This new system will be on-line in 2001.

Thank you for your interest in the Division of Youth Corrections. Additional information is available on our web site at <http://www.cdhs.state.co.us/dyc/Home.htm>.

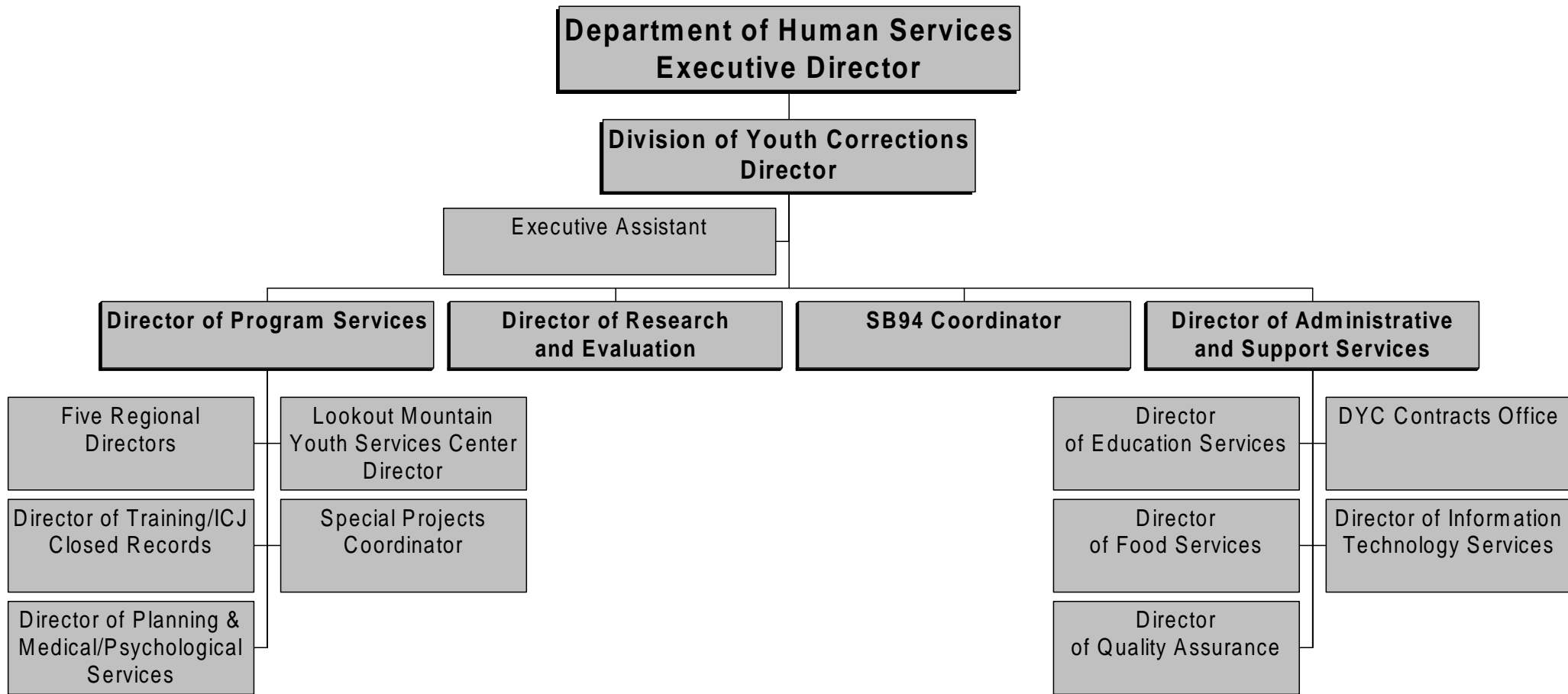
Sincerely,

Betty K. Marler  
Director, Division of Youth Corrections

# Colorado Department of Human Services

## Division of Youth Corrections

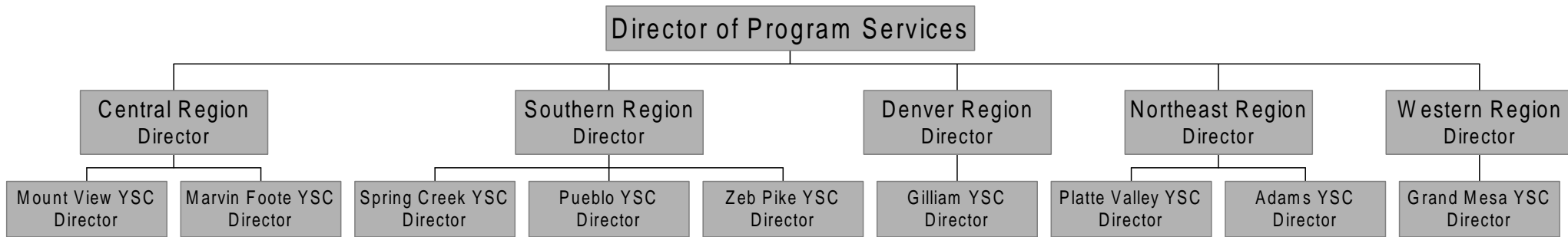
### Organizational Flowchart



# Colorado Department of Human Services

## Division of Youth Corrections

### Regional Management Structure





# THE COLORADO DIVISION OF YOUTH CORRECTIONS

## VISION

*"Working with Colorado Communities to Achieve Justice."*

## MISSION

The mission of the Division of Youth Corrections is to protect, restore, and improve public safety through a continuum of services and programs that:

- Effectively supervise juvenile offenders;
- Promote offender accountability to victims and communities, and;
- Build skills and competencies of youth to become responsible citizens.





# DIVISION OF YOUTH CORRECTIONS

## TABLE OF CONTENTS

<b>GLOSSARY OF TERMS USED .....</b>	<b>ii</b>
<b>EXECUTIVE SUMMARY .....</b>	<b>viii</b>
<b>SECTION I: COLORADO STATE TOTALS</b>	
<i>FILTERING PROCESS TO COMMITMENT .....</i>	<i>3</i>
<i>FILTERING PROCESS TO DETENTION .....</i>	<i>4</i>
<i>POPULATION DATA ON ALL CLIENTS.....</i>	<i>5</i>
<b>SECTION II: COMMITMENT PROGRAM SERVICES</b>	
<i>COMMITMENT POPULATION TRENDS (1989-2000) .....</i>	<i>7</i>
<i>COMMITMENT POPULATION TRENDS BY PROGRAM TYPE.....</i>	<i>9</i>
<i>TRENDS IN COMMITMENT ADP BY PROGRAM TYPE.....</i>	<i>11</i>
<i>TRENDS IN COMMITMENT LENGTH OF STAY BY PROGRAM TYPE .....</i>	<i>12</i>
<i>POPULATION TRENDS BY SENTENCE AND COMMITMENT TYPE .....</i>	<i>13</i>
<i>POPULATION TRENDS BY COMMITMENT CLASSIFICATION SCORES .....</i>	<i>14</i>
<i>PAROLE POPULATION TRENDS AND CHARACTERISTICS.....</i>	<i>16</i>
<i>COLORADO JUVENILE COMMITMENT RATES BY MAJOR COUNTIES.....</i>	<i>17</i>
<i>DEMOGRAPHIC TRENDS.....</i>	<i>18</i>
<i>COMMITMENT POPULATION CHARACTERISTICS BY GENDER.....</i>	<i>19</i>
<b>SECTION III: DETENTION PROGRAM SERVICES</b>	
<i>DETENTION POPULATION TRENDS (1989-2000) .....</i>	<i>22</i>
<i>DETENTION POPULATION TRENDS BY PROGRAM TYPE .....</i>	<i>24</i>
<i>COLORADO JUVENILE DETENTION RATES BY MAJOR COUNTIES.....</i>	<i>25</i>
<i>DEMOGRAPHIC AND OTHER CHARACTERISTICS .....</i>	<i>26</i>
<i>DETENTION POPULATION CHARACTERISTICS BY GENDER.....</i>	<i>28</i>
<b>SECTION IV: REGIONAL SUMMARIES</b>	
<i>DENVER REGION .....</i>	<i>31</i>
<i>CENTRAL REGION.....</i>	<i>34</i>
<i>SOUTHERN REGION .....</i>	<i>39</i>
<i>NORTHEAST REGION .....</i>	<i>44</i>
<i>WESTERN REGION .....</i>	<i>49</i>

## Glossary of Terms Used

**Disclaimer:** These definitions are provided for quick reference purposes only. Please refer to the Colorado Revised Statutes for more complete definitions of legal categories and conditions.

**Adjudication** – The result of an adjudicatory hearing in which the court determines that it has been proven beyond a reasonable doubt that a juvenile has committed a delinquent act or that a juvenile has pled guilty to committing a delinquent act.

**Aggravated Offender (Sentence Type)** – see *Sentencing Special Offenders*

**Assessment** - There are five regional assessment locations where youth committed to DYC are assessed to determine youth's classification level and needs for appropriate placement and program referral.

**Assessment LOS** - The average amount of time spent in assessment for youth discharged from DYC during the reporting period. Statutorily, the assessment period must be completed within 30 days of a youth's commitment.

**Average Daily Caseload (ADC)** - The average number of active youth per day on parole during the time period. Youth on parole who were on escape status during the time period are not included.

**Average Daily Population (ADP)** - The average number of youth per day present in a program during the reporting period.

**Boot Camp Sentence** - A court imposed sentence to the Regimented Juvenile Training Program as a condition of probation. The sentence includes a 60-day military style residential program followed by an aftercare program on supervised probation.

**Clients Served: Commitment** - The total number of youth served in a particular program during the reporting period. Total clients served in a given category (e.g. secure, staff secure, or community) represents unduplicated counts of clients served in those categories. Since youth can be served in more than one type of program in the course of a year, the total clients served in a particular category will not equal the sum of the clients served in each program.

**Clients Served: Detention** - The total number of youth served in a particular program during the reporting period. Total clients served in a program (e.g. Adams YSC, Boot Camp, or staff secure detention) represents unduplicated counts of clients served in those programs. Since the same youth can have multiple admissions to detention and be served in more than one particular program in the course of a year, the total clients served in all programs will not equal the sum of the clients served in each program.



**Commitment** - Commitments are dispositions of juvenile cases resulting in the transfer of legal custody to the Department of Human Services by the court as a result of an adjudicatory hearing on charges of delinquent acts committed by the youth.

**Commitment Classification** - An objective commitment classification instrument is administered during assessment to guide the placement decisions concerning the type of commitment program most suitable for individual youth given the severity of their commitment offense coupled with the risk of reoffending.

**Commitment Programs** - Youth can participate in any or all of six components of the DYC Commitment Program: Assessment, Orientation, Secure Programs, Staff Secure Programs, Community Residential, and Parole.

**Commitment Sentences** - Juveniles who have been adjudicated delinquent and committed to the Division of Youth Corrections can be given either nonmandatory or mandatory sentences. Mandatory sentences can include repeat and violent offenders. Juveniles can also be sentenced as aggravated offenders. See Section 19-2-601 (a), C.R.S.

**Community LOS** - The average amount of time spent in community residential programs for youth discharged from DYC during the reporting period.

**Community Residential** - DYC contracts with a number of private vendors to provide community-based programs to youth presenting the lowest risk of reoffending and youth transitioning from more secure programs. These programs include both group residential care and foster care programs.

**Concurrent Sentence** - A recommitment sentence which runs simultaneous to the original commitment sentence.

**Consecutive Sentence** - A recommitment sentence which runs consecutive to the original sentence.

**Contempt Sentence** - A detention sentence can be applied for failure to obey a court's lawful orders. Sentences are applied to youth who have disobeyed a court order, acted disruptively in court, or used objectionable language in a courtroom.

**Court Order Detention Hold** - Detention holds resulting from a court order pending delinquency adjudication, disposition, evaluation or other action. Decision to hold generally reflects reasonable evidence to believe that the juvenile may be a danger to him/herself, or to the community.

**Courtesy Detention Hold** - Temporary detention holds for other agencies such as immigration or pending transfer to other agencies.

**Delinquent Sentence** – (see also *703H Sentence*) Court imposed sentence to detention for delinquent act and youth is not under probation supervision.

**Detention** - The custodial status of youth who are being confined after arrest or while awaiting the completion of judicial proceedings. Detention programs hold youth who are awaiting trial, serving detention sentences or awaiting commitment placement (either institutional or community based).

**Detention Admission** - Each admission to detention for temporary custody of youth are tracked under the admission category. In contrast to unduplicated counts of clients served in detention, one youth can have multiple admissions for a single incident. For example, if a youth is admitted to detention on a pretrial basis (preadjudicated) and released, a later sentencing to detention on the original charge would count as a separate admission even though it is the same youth and the same incident. Likewise, if the youth serves out the sentence on weekends, each separate weekend admission counts as separate admissions.

**Detention Intake** – A youth who is temporarily in the physical custody of a detention program either pending release or transport but who is not admitted and placed in contact with the general detention population is considered an “intake” but not an admission.

**Detention Sentence** - The court imposed sanction of confinement to a detention program or boot camp as a result of an adjudicatory hearing which determined that a delinquent act had been committed. Major sentence types include probation sentences, traffic sentences, handgun sentences, municipal sentences, game and fish sentences, contempt sentences, and 703H sentences (non-probation sentences for a delinquent act; see *Delinquent Sentence*).

**Game-Fish Sentence** - Court imposed detention sentence for violation of game and fish ordinances.

**Handgun Sentence** - Court imposed detention sentence for the crime of juvenile possession of a handgun.

**Interrupted Detention Hold** - Detention hold in partial fulfillment of a court imposed detention sentence. The most common instance is a sentence served over two or more weekends.

**Interstate Compact on Juveniles (ICJ)** - An agreement between eligible jurisdictions in the United States and its territories which provides the means for these jurisdictions to function cooperatively in the return of escapees and absconders. ICJ includes the cooperative supervision of parolees between states.

**Length of Stay (LOS): Commitment** - There are several variations of the length of stay measure. All commitment LOS figures are measured in months and are calculated for those youth who spent time in the program for which LOS is reported (e.g., secure) prior to discharge from DYCS custody (including either residential or nonresidential parole supervision).

**Length of Stay (LOS): Detention** - The amount of time spent in a detention program during the time period. All detention LOS figures are measured in days.

**Mandatory Sentence Offender** – see *Sentencing Special Offenders*

**Municipal Sentence** - Court imposed detention sentence for contempt violation of municipal ordinances.

**New Commitment** - Commitment of youth who were not previously committed, or who were previously committed but had been discharged from NYC rolls.

**Nonmandatory Sentence** - This sanction involves no minimum out-of-home sentence length, and the maximum residential sentence length cannot exceed 24 months.

**Orientation Program** - The goal of this 45-75 day privately- operated program housed at the Lookout Mountain Youth Services Center is to prepare committed youth for their next commitment placement. The program focuses on improving youths' attitudes in working with peers and adults and fostering a willingness to change. This component of the NYC Commitment Program opened on July 1, 1996.

**Parole** - The status of a youth conditionally released from a residential setting by discretion of the juvenile parole board prior to expiration of commitment or upon expiration of commitment. While on parole, a youth is placed under the supervision of a parole officer and required to observe conditions of release set by parole officer and Juvenile Parole Board.

**Parole LOS** -The average amount of time spent on parole for youth discharged from NYC during the reporting period.

**Parole Revocation** - The administrative action of the juvenile parole board which removes a youth from parole status in response to a violation of lawfully required conditions of parole, including the prohibition against commission of a new offense. Further parole hearings are scheduled at the discretion of the youth's client manager.

**Parole Suspension** - The administrative action of the juvenile parole board which removes a youth from parole status in response to a violation of lawfully required conditions of parole, including the prohibition against commission of a new offense. Reconsideration of parole must occur within 90 days on a date determined by the parole board.

**Parole Violation** – Actions by a parolee that do not conform to the conditions of parole.

**Preadjudicated** - The legal status of youth pending delinquency adjudication decisions. Often these youth are referred to as pre-trial youth since they are generally admitted pending some court action. This category also includes youth who are serving a sentence, such as probation, on a prior delinquency adjudication and who are in detention pending a new court action.

***Privately Operated Programs*** - Detention or commitment programs which are administered by a private entity through a contract with the state. Privately operated programs can be administered in privately owned or state owned buildings.

***Prior Adjudications*** - Delinquency adjudications which occurred prior to the current detention or commitment event.

***Prior Out-of-home Placements*** - Placements in a Social Services residential program or other treatment program for an extended period prior to youth's current commitment.

***Probation Sentence*** - A court imposed detention sentence as a condition of probation or as a violation of the terms and conditions of probation.

***Recommitment*** - An additional commitment imposed by the court on a youth who has not yet been discharged from NYC rolls.

***Regional Management Structure*** - Decentralized NYC management structure comprised of five geographic regions in the state.

***Repeat Offender*** – see *Sentencing Special Offenders*

***Residential Programs*** - Programs that provide 24-hour care.

***Residential LOS*** - The average amount of time spent in all residential programs (assessment, orientation, secure, staff secure, and community programs) for committed youth discharged from NYC during the reporting period.

***Return Commitment*** – Used to describe detention stays of youth who were previously committed to the Department of Human Services and who have not yet been discharged. The reasons for admission into a detention center vary for these youth. The most common reasons include awaiting court action on new offenses, awaiting placement into a commitment program following a court or community review board decision, or awaiting a parole board action on a suspension or revocation hearing.

***Runaway Detention Hold*** - Detention holds due to runaway from home or placement, or out-of-state runaways.

***703H Sentence*** – (see also *Delinquent Sentence*) Court imposed sentence to detention for delinquent act and youth is not under probation supervision.

**Sentencing Special Offenders** (see Section 19-2-908, C.R.S.)

- a. **Mandatory Sentence Offender**- This sanction specifies a minimum time period of up to 24 months or less during which a youth must be in an out-of-home placement.
- b. **Repeat Offender (Sentence Type)** - A 'repeat' sentence type can be imposed on a juvenile who has been previously adjudicated a juvenile delinquent and is adjudicated a juvenile delinquent for a delinquent act that constitutes a felony or has his or her probation revoked for a delinquent act that constitutes a felony. The court may or may not designate a minimum sentence length.
- c. **Violent Offender (Sentence Type)** - A juvenile may be sentenced as a violent offender if he or she is adjudicated a juvenile delinquent for a delinquent act that constitutes a crime of violence as defined in section 16-11-309(2), Colorado Revised Statutes.
- d. **Aggravated Offender (Sentence Type)** - These sanctions specify a time period from three to seven years during which time a youth must remain in the custody of the Department of Human Services. Contingent upon court approval, youth may be eligible for nonsecure placement, parole, or transfer to the Department of Corrections (adult corrections).

**Situational Detention Hold** - Temporary detention hold pending transportation or release to a parent or guardian.

**Social Service Detention Hold** - Temporary detention hold for youth under Social Services supervision pending evaluation, placement or other court decision.

**Staff Secure Programs** – Privately-operated staff secure programs provide 24-hour line-of-sight supervision of youth.

**State Operated Programs** - Detention or commitment programs which are administered by DYC employees in state-owned buildings.

**Total Commitment LOS** - The average amount of time in DYC custody (sentence start date to discharge date including parole) for all youth discharged from DYC during the reporting period.

**Traffic Sentence** - Court imposed detention sentence due to a traffic violation.

**Violent Offender** – see *Sentencing Special Offenders*

## **EXECUTIVE SUMMARY**

The Management Reference Manual is designed to provide statistical information on youth served by the Division of Youth Corrections (DYC) during FY1999-00 and other trend data. Section I contains statewide population statistics while Sections II and III provide detailed population statistics describing the commitment and detention program services, respectively. Section IV contains population statistics for each of the Division's management regions. Trends in population data and client demographic characteristics are included in each section. Unless otherwise noted, all data for this report are extracted from the DYC Client Data System. A summary of key statistics provided in the report is discussed below.

### **I. STATE TOTALS**

#### **A. Juvenile Justice Filtering Process to Commitment**

- There were 60,366 juvenile arrests during 1999 representing 12 percent of the 10-17 year old population in Colorado.
- There were 17,769 juvenile filings during FY1999-00 representing 3.6 percent of the 10-17 year old population in Colorado.
- There were 7,650 probation intakes during FY1999-00 representing 1.6 percent of the 10-17 year old population in Colorado.
- The proportion of the 10-17 year old population that is committed or admitted to detention each fiscal year has remained fairly stable since FY1994-95 despite the apparent drop in juvenile arrests, juvenile delinquency filings, and probation intakes since FY1997-98.
- A greater proportion of those juveniles who were arrested in FY1999-00 received delinquency charges compared with FY1998-99.

#### **B. Clients Served<sup>1</sup>**

- There were 10,080 unduplicated youth served in DYC programs during fiscal year 1999-00; 8,799 youth in detention programs and 2,544 youth served in commitment programs.
- There were 1,245 youth served on parole during the fiscal year. Compared to FY1998-99, there were 36 percent more youth served on parole in FY1999-00.

#### **C. DYC Population Summary**

- There was an average daily population (ADP) of 2,389 youth in all DYC programs including detention (589), commitment residential (1,198), and parole (602) during FY1999-00.
- Compared to FY1998-99, the ADP of youth in all DYC programs increased by 15 percent.
- There were 15,294 detention admissions and 848 new commitments in FY1999-00.

---

<sup>1</sup> Clients served represents the total number of youth served in a particular program during the reporting period. Total clients served in a given category (e.g. detention or commitment programs) represents unduplicated counts of clients served in those categories. Since youth can be served in more than one type of program in the course of a year, the total clients served in a particular category will not necessarily equal the sum of the clients served in each program.

## II. COMMITMENT POPULATION TRENDS AND CHARACTERISTICS

### A. Population Trends

- During FY1999-00 there were considerably more youth in commitment programs and they were spending significantly more time in residential programs and on parole at time of discharge, compared to FY1989-90 population figures.
- The residential ADP has increased by 134 percent during the past ten years, outpacing the rate of increase in the number of newly committed youth entering DYC commitment programs due to increasing lengths of stay. The number of newly committed youth has grown by 67 percent since FY1989-90.
- The number of newly committed youth entering DYC commitment programs decreased in FY1999-00 compared with FY1998-99. This represents the first year that the number of newly committed youth decreased since FY1992-93.
- The number of recommitted youth entering DYC commitment programs increased by 35 percent compared with FY1998-99. It is likely that the growth in the population of recommitted youth is contributing to the overall increase in the commitment residential ADP.
- The number of youth entering DYC commitment programs has increased at almost twice the growth rate of 10-17 year olds in the general population; the number of 10-17 year olds in Colorado has grown by 33 percent since 1990 while the number of youth entering DYC commitment programs has increased by 56 percent over the same time period.
- The commitment rate (number of youth committed per 100,000 youth in Colorado) decreased in FY1999-00 compared with FY1998-99.
- Thirty-six percent of the commitment residential ADP was served in state-operated commitment programs and 64 percent was served in privately operated programs.
- Average residential length of stay (LOS) at time of discharge was 15.5 months in FY1999-00.
- The juvenile parole population has grown substantially as more youth fall under the one-year of parole supervision mandated by House Bill 96-1005. During FY1999-00, 82 percent of committed youth were required to serve one year on parole.
- Since FY1997-98, the parole ADP grew by 136 percent. There has been a parallel increase in parole LOS at discharge as a greater proportion of parolees spend closer to the one year on parole mandated by the mandatory parole legislation. For youth discharged in FY1999-00, the average LOS on parole was 11.0 months.

### B. Population Characteristics

#### 1. Gender

- Males accounted for the majority (87 percent) of newly committed youth in FY1999-00. Likewise, 88 percent of the ADP in residential placements was male in FY1999-00. Compared to females, males discharged in FY1999-00 spent an average of 2.9 months longer in residential programs.
- The number of newly committed females has remained relatively stable since FY1997-98 while the ADP of females has been increasing fairly steadily during this same time period. This can be explained in part by the longer periods of time females are staying in residential programs; females discharged in FY1999-00 spent an average of 13.0 months in residential programs compared with 12.7 months for those discharged in FY1998-99.

## **2. Ethnicity**

- Minority youth<sup>2</sup> continue to be overrepresented in the DYC system relative to the proportion of minorities in the total juvenile population in Colorado
- In FY1999-00, minority youth accounted for 53 percent of the ADP in residential programs but only 26 percent of the total juvenile population.
- Anglo youth (47 percent) have consistently represented the largest single ethnic group in residential programs followed by Hispanic/Latino youth (33 percent) and African-American youth (16 percent). The ethnic distribution of the parole population in FY1999-00 mirrors the residential population.
- A greater proportion of females in residential programs during FY1999-00 was Anglo (50 percent) compared with males (46 percent).

## **3. Age**

- The average age of youth committed in FY1999-00 was 16.3 years. This figure has remained stable during the past ten years.
- Consistent with prior fiscal years, 17 year olds was the largest single age group entering DYC commitment programs in FY1999-00. Among females, however, 16 year olds accounted for the largest single age group entering DYC commitment programs.
- The average age at first adjudication for all youth in residential programs was 14.1 years in FY1999-00.

## **4. Other Characteristics**

- The proportion of newly committed youth sentenced as mandatory offenders decreased substantially in FY1999-00 compared to prior fiscal years. Only 26 percent of youth committed in FY1999-00 were sentenced as mandatory offenders compared to 50 percent in FY1998-99. This represents the first year that the proportion of newly committed youth with mandatory sentences decreased since FY1996-97.
- Since FY1991-92, the proportion of newly committed youth classified during assessment as needing medium secure placement has increased by 13 percent whereas the proportion classified for less secure community residential placement has decreased by 19 percent.
- Fifty-nine percent of newly committed youth had been placed out-of-home at least twice prior to commitment. (Eighty-one percent had one or more out-of-home placements).
- The number of prior out-of-home placements varied significantly by gender. Seventy-seven percent of females had been placed out-of-home at least twice prior to commitment compared with 56 percent of males.
- Sixty-one percent of newly committed youth had a history of running away during the 12 months prior to being committed. Females were significantly more likely to have a history of running away compared to males.
- Forty-two percent of newly committed youth were committed for property offenses and 40 percent were committed for person offenses. The remaining

---

<sup>2</sup> Minority youth include African-American, Hispanic/Latino, Native-American, Asian-American, and other non-Anglo youth. According to population estimates provided by the Demography Division of the Colorado Department of Local Affairs, the ethnic breakdown of 10-17 year old youth in Colorado during 1999 was: 74 percent Anglo, 17 percent Hispanic/Latino, 5 percent African-American, and 4 percent of other ethnic origins.



newly committed youth were committed for drug offenses (6 percent), weapons offenses (4 percent), and other offenses (8 percent).

- Sixty-five percent of newly committed youth were sentenced for felony level offenses. Males were significantly more likely to be committed for felony level offenses compared with females.
- Approximately 75 percent of those youth discharged from parole during FY1999-00 were working and/or in school.

### **III. DETENTION POPULATION TRENDS AND CHARACTERISTICS**

#### **A. Population Trends**

- Similar to the growth in the commitment population, the number of youth in detention programs and their average LOS at release have both grown substantially since FY1989-90. The detention ADP has grown by 71 percent and the average LOS for youth released from detention has increased by approximately four days, compared to FY1989-90 population figures.
- The number of youth in DYC detention facilities has increased at a significantly faster pace than the growth rate of 10-17 year olds in the general population. The number of 10-17 year olds in Colorado has grown by 33 percent since 1990 while the average number of youth in DYC detention facilities on any given day has increased by 71 percent over the same time period.
- The detention rate (number of detention admissions per 100,000 youth in Colorado) has been decreasing since FY1997-98.
- The ADP in state-operated detention programs represented 77 percent of the total detention ADP; state-operated detention programs maintained an ADP of 456 youth in FY1999-00.

#### **B. Population Characteristics**

##### **1. Gender**

- Males accounted for 76 percent of the total number of youth admitted to detention and 82 percent of the ADP in detention facilities in FY1999-00.
- Males spent an average of 4.5 days longer in detention compared with females in FY1999-00.

##### **2. Ethnicity**

- The ethnic distribution of the detention population in FY1999-00 mirrors the commitment population; minority youth<sup>3</sup> continue to be overrepresented in the DYC system relative to the proportion of minorities in the total juvenile population in Colorado
- In FY1999-00, minority youth accounted for 52 percent of the ADP in detention facilities but only 26 percent of the total juvenile population.
- Anglo youth (48 percent) have consistently represented the largest single ethnic group in residential programs followed by Hispanic/Latino youth (36 percent) and African-American youth (13 percent).
- A greater proportion of females in detention facilities during FY1999-00 was Anglo (52 percent) compared with males (47 percent).

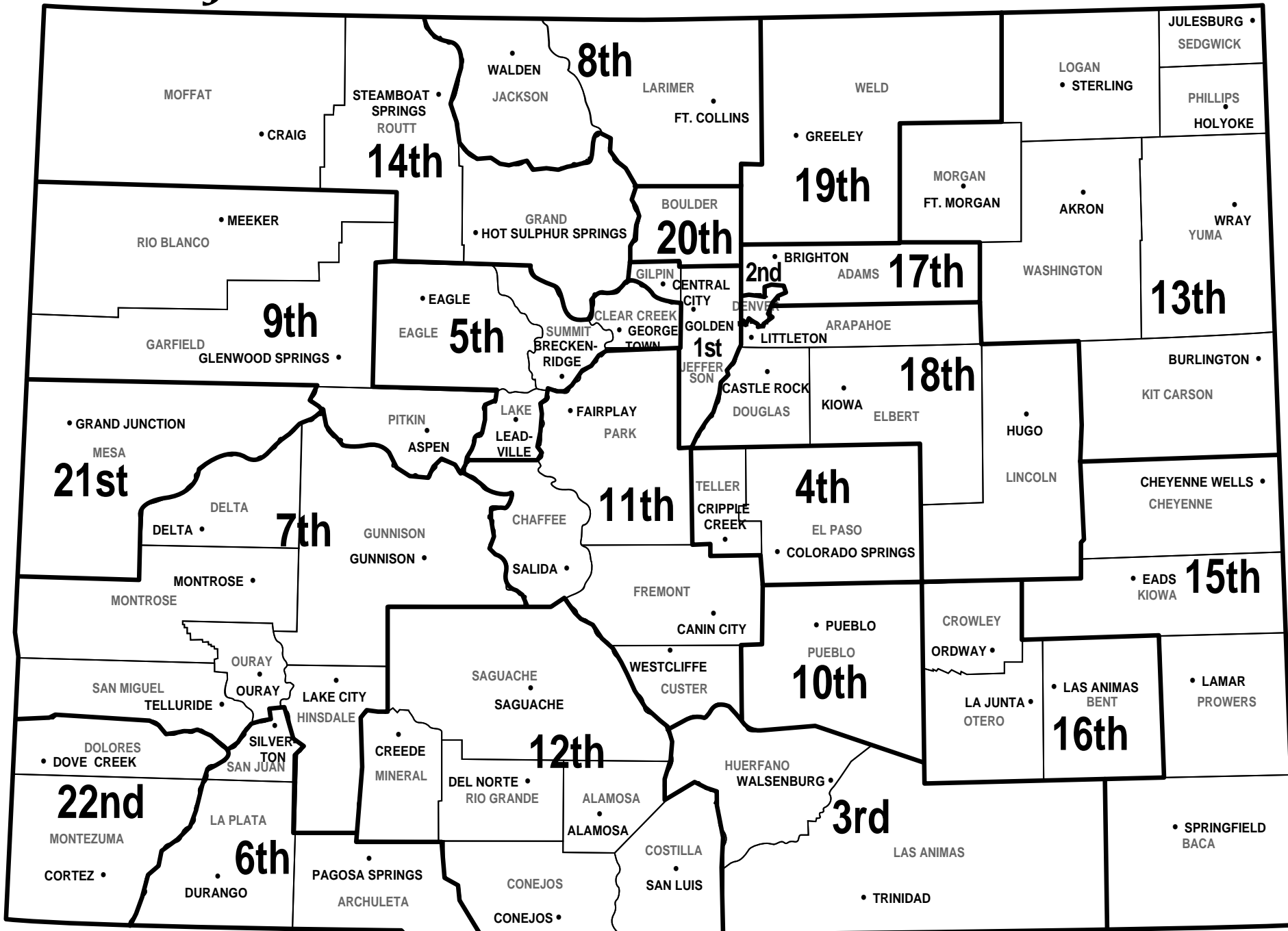
---

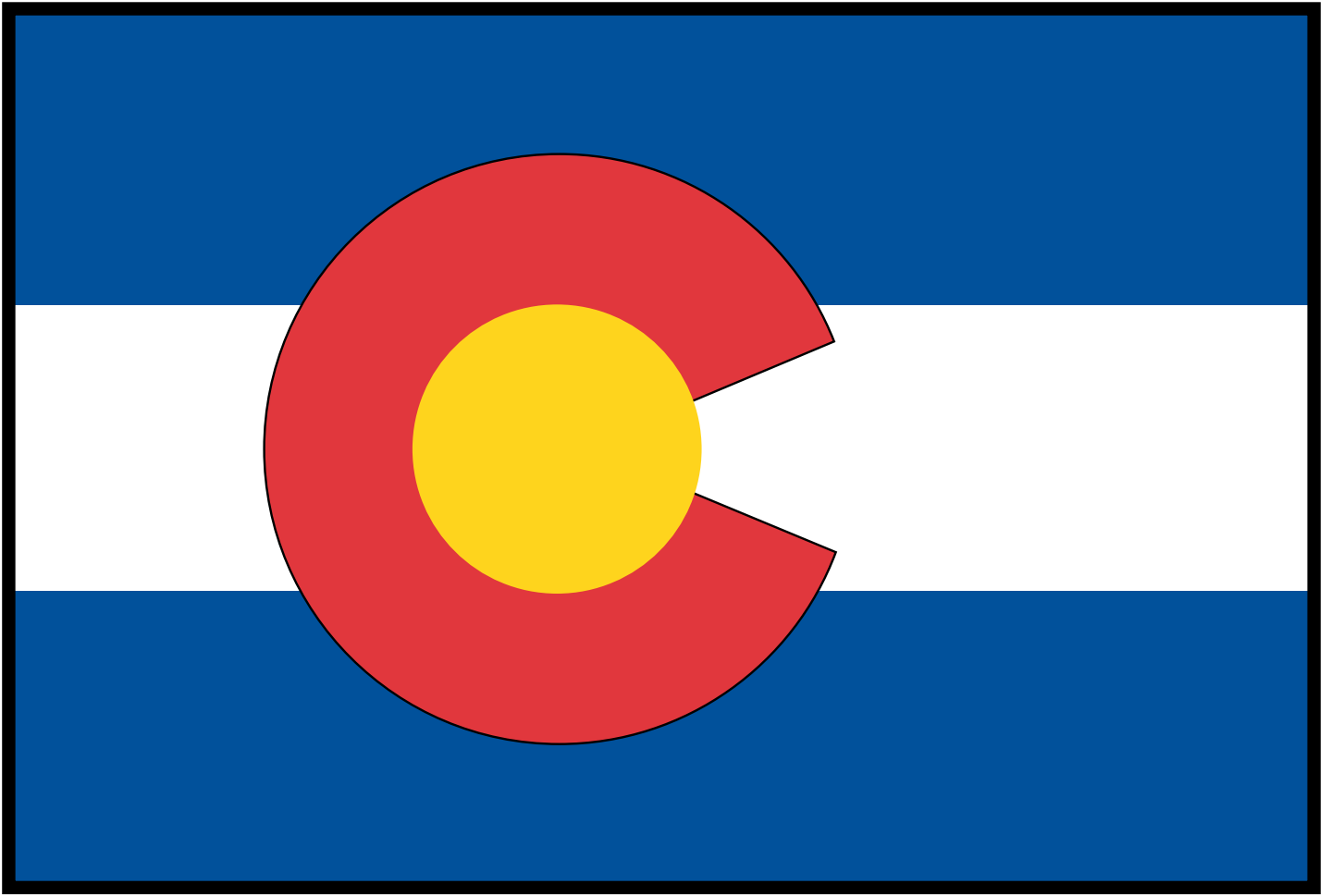
<sup>3</sup> Minority youth include African-American, Hispanic/Latino, Native-American, Asian-American, and other non-Anglo youth. According to population estimates provided by the Demography Division of the Colorado Department of Local Affairs, the ethnic breakdown of 10-17 year old youth in Colorado during 1999 was: 74 percent Anglo, 17 percent Hispanic/Latino, 5 percent African-American, and 4 percent of other ethnic origins.

### **3. Age**

- The average age of youth admitted to detention in FY1999-00 was 16.0 years. This figure has remained stable during the past ten years.
- Consistent with prior fiscal years, 17 year olds accounted for the greatest proportion (28 percent) of youth admitted to detention facilities during FY1999-00. Among females, however, 16 year olds accounted for the largest single age group admitted to detention facilities.

# Judicial Districts of Colorado

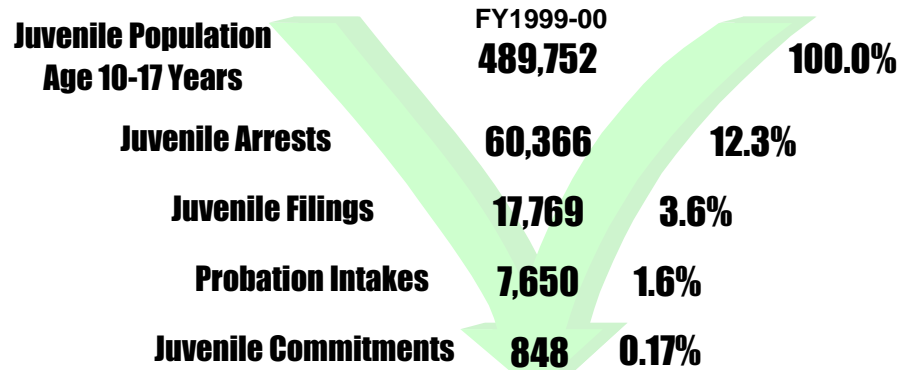




SECTION I

COLORADO STATE TOTALS

# JUVENILE JUSTICE FILTERING PROCESS TO COMMITMENT



	FY 1990-91	FY 1991-92	FY 1992-93	FY 1993-94	FY 1994-95	FY 1995-96	FY 1996-97	FY 1997-98	FY 1998-99	FY 1999-00
Age 10-17 Population <sup>1</sup>	369,581	383,346	400,127	415,411	429,944	443,342	456,253	468,034	478,275	489,752
Juvenile Arrests <sup>2</sup>	51,884	54,626	53,595	55,012	56,199	59,884	60,755	70,710	69,650	60,366
Arrests as % of population	14.0%	14.2%	13.4%	13.2%	13.1%	13.5%	13.3%	15.1%	14.6%	12.3%
Juvenile Delinquency Filings <sup>3</sup>	10,710	12,718	11,911	12,570	15,175	17,577	19,063	19,214	18,395	17,769
Filings as % of Arrests	20.6%	23.3%	22.2%	22.8%	27.0%	29.4%	31.4%	27.2%	26.4%	29.4%
Number of Probation Intakes	5,753	6,377	6,669	6,858	7,174	7,201	7,753	8,694	8,607	7,650
Intakes as % of Filings	53.7%	50.1%	56.0%	54.6%	47.3%	41.0%	40.7%	45.2%	46.8%	43.1%
Number of Commitments <sup>4</sup>	543	607	542	552	606	693	762	781	878	848
Commitments as % of Intakes	9.4%	9.5%	8.1%	8.0%	8.4%	9.6%	9.8%	9.0%	10.2%	11.1%
Commitments as % of Population	0.15%	0.16%	0.14%	0.13%	0.14%	0.16%	0.17%	0.17%	0.18%	0.17%

<sup>1</sup>Colorado State Department of Local Affairs. Population data are reported for calendar years. Population data for 1990 are based upon the 1990 census, and population data for 1991-2000 are projected from the 1990 data. Population estimates for the years 1990 through 2000 have been revised and may not match figures reported in the Management Reference Manual in prior years. (<http://www.dlg.oem2.state.co.us/demog/datalist.htm>)

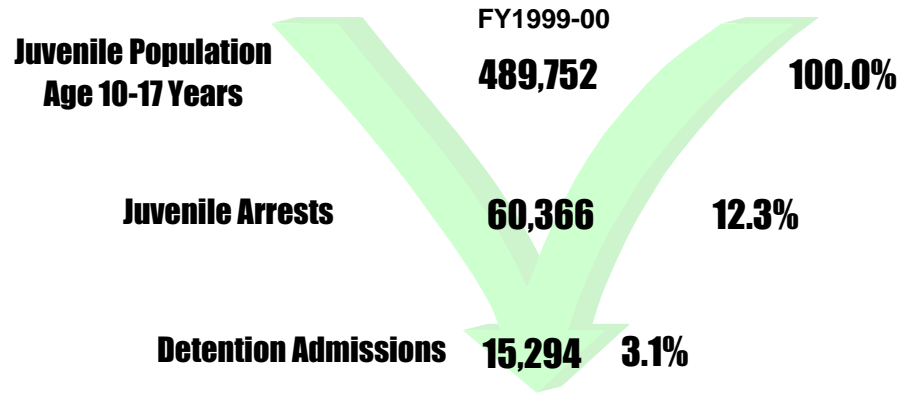
<sup>2</sup>Colorado Bureau of Investigation, 'Uniform Crime Report,' 1990 thru 1999 calendar years. ([http://cdpsweb.state.co.us/cbi/docs\\_reports.htm](http://cdpsweb.state.co.us/cbi/docs_reports.htm))

<sup>3</sup>Includes only Delinquency and CHINS (CHINOS) filings and new cases on probation supervision.

Colorado Judicial Branch Annual Report Statistical Supplement: Fiscal Years 1990-91 thru 1999-00

<sup>4</sup>Includes only new commitments. Division of Youth Corrections.

# JUVENILE JUSTICE FILTERING PROCESS TO DETENTION



	FY 1990-91	FY 1991-92	FY 1992-93	FY1993-94	FY 1994-95	FY1995-96	FY1996-97	FY1997-98	FY1998-99	FY1999-00
Age 10-17 population <sup>1</sup>	369,581	383,346	400,127	415,411	429,944	443,342	456,253	468,034	478,275	489,752
Juvenile Arrests <sup>2</sup>	51,884	54,626	53,595	55,012	56,199	59,884	60,755	70,710	69,650	60,366
Arrests as % of population	14.0%	14.2%	13.4%	13.2%	13.1%	13.5%	13.3%	15.1%	14.6%	12.3%
Detention Admissions	11,402	11,988	12,388	16,197	16,638	13,858	14,652	15,428	15,212	15,294
Admissions as % of Arrests	22.0%	21.9%	23.1%	29.4%	29.6%	23.1%	24.1%	21.8%	21.8%	25.3%
Admissions as % of Population	3.1%	3.1%	3.1%	3.9%	3.9%	3.1%	3.2%	3.3%	3.2%	3.1%

<sup>1</sup>Colorado State Department of Local Affairs. Population data are reported for calendar years. Population data for 1990 are based upon the 1990 census, and population data for 1991-2000 are projected from the 1990 data. Population estimates for the years 1990 through 2000 have been revised and may not match figures reported in the Management Reference Manual in prior years. (<http://www.dlg.oem2.state.co.us/demog/datalist.htm>)

<sup>2</sup>Colorado Bureau of Investigation, Uniform Crime Report, 1990 thru 1999 calendar years. ([http://cdpsweb.state.co.us/cbi/docs\\_reports.htm](http://cdpsweb.state.co.us/cbi/docs_reports.htm))

**DIVISION OF YOUTH CORRECTIONS**

**ALL CLIENTS  
POPULATION DATA**

**FY 1999-00**

	<b>Clients Served<sup>1</sup></b>	<b>Admissions</b>	<b>ADP</b>	<b>LOS<sup>2</sup> (months)</b>
<b>COMMITTED YOUTH</b>				
Assessment <sup>3</sup>	963		77.9	1.0
State Secure	1,394		349.4	7.1
Private Secure/Staff Supervised	1,405		550.9	6.4
Community Residential	774		220.1	5.1
Subtotal Committed Residential	2,175		1,198.3	15.5
<b>PAROLE</b>	1,243		601.7	11.0
<b>DETAINED YOUTH</b>				
				<b>(days)</b>
State-Operated	7,704	12,804	456.1	13.8
Contracted Staff Secure	1,762	2,025	55.9	9.7
Boot Camp	541	465	77.1	57.8
Subtotal Detained	8,799	15,294	589.1	14.3
<b>TOTAL</b>	10,080		1,787.4	

<sup>1</sup>Clients served counts are unduplicated within each category (see glossary, pg. ii).

<sup>2</sup>Lengths of stay are defined in the Glossary of Terms on page ii.

<sup>3</sup>The number of youth served in assessment is larger than the number of new commitments since carryovers from the previous fiscal year as well as some recommitted youth were served in assessment during FY1999-00.



SECTION II

**COMMITMENT POPULATION  
TRENDS AND CHARACTERISTICS**



**DIVISION OF YOUTH CORRECTIONS**

**COMMITTED YOUTH  
POPULATION TRENDS**

**FY 1989-90 through FY 1999-00**

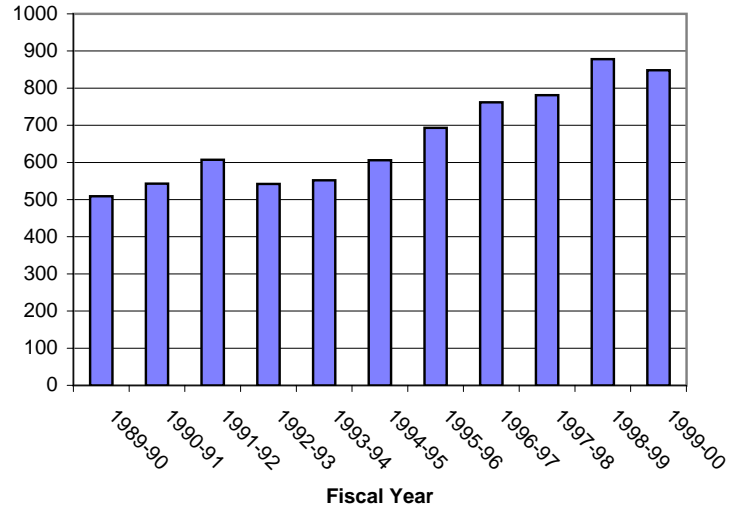
Fiscal Year	Number of		No. of New Commitments	Percentage Change +/-	Residential ADP <sup>2</sup>	Average		
	Clients Served <sup>1</sup>	Percentage Change +/-				Percentage Change +/-	Residential LOS	Percentage Change +/-
1989-90	1,340		509		512.9		12.3	
1990-91	1,492	11.3%	543	6.7%	542.8	5.8%	12.8	4.1%
1991-92	1,599	7.2%	607	11.8%	563.4	3.8%	13.0	1.6%
1992-93	1,637	2.4%	542	-10.7%	609.3	8.1%	12.1	-6.9%
1993-94	1,622	-0.9%	552	1.8%	612.5	0.5%	13.0	7.4%
1994-95	1,638	1.0%	606	9.8%	633.9	3.5%	13.8	6.2%
1995-96	1,769	8.0%	693	14.4%	762.9	20.4%	13.7	-0.7%
1996-97	1,891	6.9%	762	10.0%	929.3	21.8%	14.5	5.8%
1997-98	2,046	8.2%	781	2.5%	973.5	4.8%	15.1	4.1%
1998-99	2,269	10.9%	878	12.4%	1,112.2	14.2%	15.6	3.3%
1999-00	2,544	12.1%	848	-3.4%	1,198.3	7.7%	15.5	-0.6%

<sup>1</sup>Clients served counts are unduplicated.

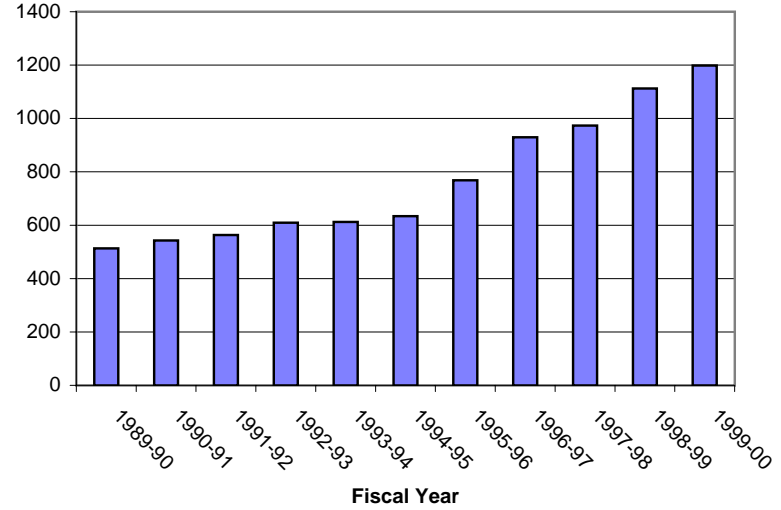
<sup>2</sup>ADP: Includes assessment, secure, staff supervised, and community residential.

**DIVISION OF YOUTH CORRECTIONS**  
**Trends in Commitment Populations**  
**FY1989-90 through FY 1999-00**

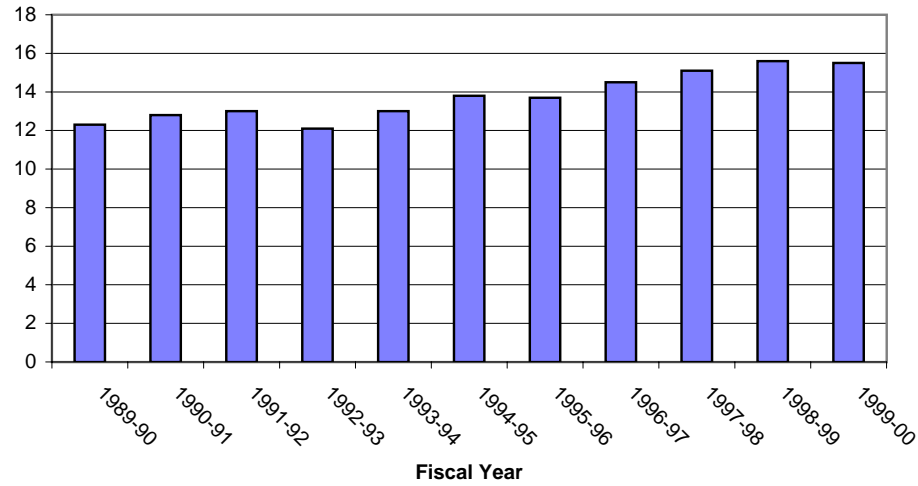
**TRENDS IN NEW COMMITMENTS**



**TRENDS IN RESIDENTIAL ADP**



**TRENDS IN RESIDENTIAL LOS**



**DIVISION OF YOUTH CORRECTIONS**  
**COMMITMENT POPULATION TRENDS BY PROGRAM TYPE**

FY 1997-98 through FY 1999-00

	FY 1997-98			FY 1998-99			FY 1999-00		
	No. of Clients Served <sup>1</sup>	ADP (mos.)	Res. LOS <sup>2</sup>	No. of Clients Served <sup>1</sup>	ADP (mos.)	Res. LOS <sup>2</sup>	No. of Clients Served <sup>1</sup>	ADP (mos.)	Res. LOS <sup>2</sup>
<b>ASSESSMENT:</b>									
Grand Mesa YSC	127	9.8	0.9	117	8.1	1.0	106	7.9	1.0
Marvin W. Foote YSC <sup>3</sup>	--	--	--	205	15.7	1.0	212	15.6	0.9
Mount View YSC	237	17.9	1.2	215	17.2	1.1	200	15.0	1.0
Platte Valley YSC	105	6.4	0.3	202	15.0	0.8	233	16.6	0.9
Robert DeNier YSC	--	--	--	--	--	--	4	0.2	0.0
Spring Creek YSC <sup>4</sup>	--	--	--	240	19.0	1.0	231	22.6	1.1
Zeb Pike YSC	213	15.9	0.4	0	0.0	0.0	0	0.0	0.0
<b>TOTAL ASSESSMENT</b>	<b>675</b>	<b>50.0</b>	<b>1.0</b>	<b>960</b>	<b>75.0</b>	<b>1.0</b>	<b>963</b>	<b>77.9</b>	<b>1.0</b>
<b>SECURE:</b>									
State Operated:									
Grand Mesa YSC	NA	32.1	4.5	182	31.0	3.9	203	36.3	3.5
Lathrop Park YSC <sup>5</sup>	15	0.7	5.5	0	0.0	0.0	0	0.0	0.0
Lookout Mountain YSC	308	155.3	13.3	293	153.4	12.7	298	154.9	13.1
Marvin W. Foote YSC <sup>3</sup>	--	--	--	153	13.8	0.9	323	35.1	1.1
Mount View YSC <sup>6</sup>	--	--	--	159	12.6	0.7	371	28.7	1.3
Platte Valley YSC	215	45.8	2.2	280	53.6	3.3	370	55.5	4
Spring Creek YSC <sup>4</sup>	43	11.0	0.9	0	0.0	0.0	0	0.0	0.0
Zeb Pike YSC <sup>7</sup>	48	2.0	NA	83	39.7	4.1	90	38.9	8.4
Subtotal State Secure	757	246.9	NA	1,048	304.1	NA	1,394	349.4	7.1
Privately Operated:									
Copper Hills	2	0.5	NA	6	4.7	0.0	7	3.6	16.5
DAYS/Reflections	185	23.5	1.9	196	23.7	1.9	103	10.2	2.0
Foothills	99	24.8	4.3	102	24.5	4.1	94	24.7	3.4
Grand Prairie	76	38.1	10.6	75	32.1	10.7	70	31.7	9.9
High Plains	101	39.8	11.9	0	0.0	0.0	0	0.0	0.0
Provo Canyon	43	18.6	6.3	46	22.4	9.6	35	15.1	8.6
Robert DeNier <sup>8</sup>	--	--	--	--	--	--	12	2.9	0.0
Teen Quest	43	20.1	9.9	47	19.7	9.4	45	19.3	9.3
Youthtrack Lathrop <sup>5</sup>	--	--	--	69	25.7	3.3	102	30.4	5.2
Youthtrack Orientation	502	72.8	1.9	445	66.0	2.1	366	47.3	2.0
Subtotal Private Secure	827	238.2	NA	839	218.8	NA	723	185.2	3.9
<b>TOTAL SECURE</b>	<b>1,541</b>	<b>485.1</b>	<b>NA</b>	<b>1,642</b>	<b>522.9</b>	<b>NA</b>	<b>1,680</b>	<b>534.6</b>	<b>8.2</b>

<sup>1</sup>Clients served is defined in the *Glossary of Terms* on page ii. Totals on this page for clients served are unduplicated within each category.

<sup>2</sup>Residential LOS is the average length of stay in months for youth discharged during the time period. Only those youth who spent any time in a program/facility are included in the LOS calculations. Youth might not have spent time in a particular program during the current fiscal year.

<sup>3</sup>Marvin W. Foote YSC began providing assessment services and commitment secure services in FY1998-99.

<sup>4</sup>Spring Creek YSC opened in February 1998 as a combined detention and commitment facility in Colorado Springs.

<sup>5</sup>Lathrop Park was closed as a state facility in August, 1997 and reopened as a privately operated facility in August, 1998.

<sup>6</sup>Mount View YSC began providing commitment secure services in FY1998-99.

<sup>7</sup>Zebulon Pike YSC was converted to a commitment facility in FY1998-99 and assessment services are now provided at Spring Creek YSC.

<sup>8</sup>Robert DeNier Youth Services Center began providing secure services in January, 2000 and is a state-owned privately operated facility.

**DIVISION OF YOUTH CORRECTIONS**  
**COMMITMENT POPULATION TRENDS BY PROGRAM TYPE**

FY 1997-98 through FY 1999-00

	FY 1997-98			FY 1998-99			FY 1999-00		
	No. of	Res.		No. of	Res.		No. of	Res.	
	Clients Served <sup>1</sup>	ADP (mos.)	LOS <sup>2</sup>	Clients Served <sup>1</sup>	ADP (mos.)	LOS <sup>2</sup>	Clients Served <sup>1</sup>	ADP (mos.)	LOS <sup>2</sup>
<b>STAFF SUPERVISED:</b>									
Privately Operated:									
Aspen	201	29.9	2.0	207	30.3	2.1	215	31.0	2.1
Cedar Springs	15	6.3	8.6	8	3.0	6.8	1	1.0	6.9
Centennial Peaks	50	19.4	9.1	65	27.5	11.5	67	23.1	8.9
Colorado West	68	11.7	2.8	60	10.1	3.4	59	10.6	2.5
El Pueblo	23	9.7	10.0	20	9.1	9.0	29	11.6	8.0
Fort Logan Mountain Star	6	1.3	NA	16	4.8	3.3	19	4.6	5.5
Glen Mills	94	48.0	14.5	77	40.4	15.2	53	32.0	14.5
Griffith Center	--	--	--	--	--	--	4	1.1	0.0
Hilltop West	53	12.4	3.8	49	11.3	4.2	59	10.5	3.5
Jefferson Hills Aurora	87	31.6	6.3	85	32.6	7.6	82	33.3	7.3
Jefferson Hills Lakewood	119	48.9	7.4	123	48.4	8.2	93	38.5	8.1
Rite of Passage	54	24.6	13.2	113	48.1	14.1	223	133.7	14.4
Sierra Vista	48	18.8	6.4	42	16.9	6.4	8	1.6	6.1
YSI - Chamberlain	23	2.6	NA	11	3.8	6.0	12	4.6	6.1
YSI - Clarinda	--	--	--	3	1.7	0.0	0	0.0	0.0
YSI - Forest Ridge	--	--	--	7	2.9	0.0	17	6.3	7.1
YSI - Springfield	--	--	--	15	6.3	0.0	20	7.8	8.6
YSI - Tarkio	--	--	--	23	13.1	6.6	22	11.8	12.1
YSI - Woodward	--	--	--	3	1.4	3.1	4	2.6	9.2
Subtotal Privately Operated	791	265.2	NA	853	311.7	NA	898	365.7	7.0
<b>TOTAL STAFF SUPERVISED</b>	<b>791</b>	<b>265.2</b>	<b>NA</b>	<b>853</b>	<b>311.7</b>	<b>NA</b>	<b>898</b>	<b>365.7</b>	<b>7.0</b>
<b>TOTAL COMMUNITY RESIDENTIAL</b>	<b>630</b>	<b>173.2</b>	<b>5.2</b>	<b>755</b>	<b>202.7</b>	<b>5.2</b>	<b>774</b>	<b>220.1</b>	<b>5.1</b>
<b>TOTAL RESIDENTIAL</b>	<b>1,896</b>	<b>973.5</b>	<b>15.1</b>	<b>2,040</b>	<b>1,112.3</b>	<b>15.6</b>	<b>2,175</b>	<b>1,198.3</b>	<b>15.5</b>

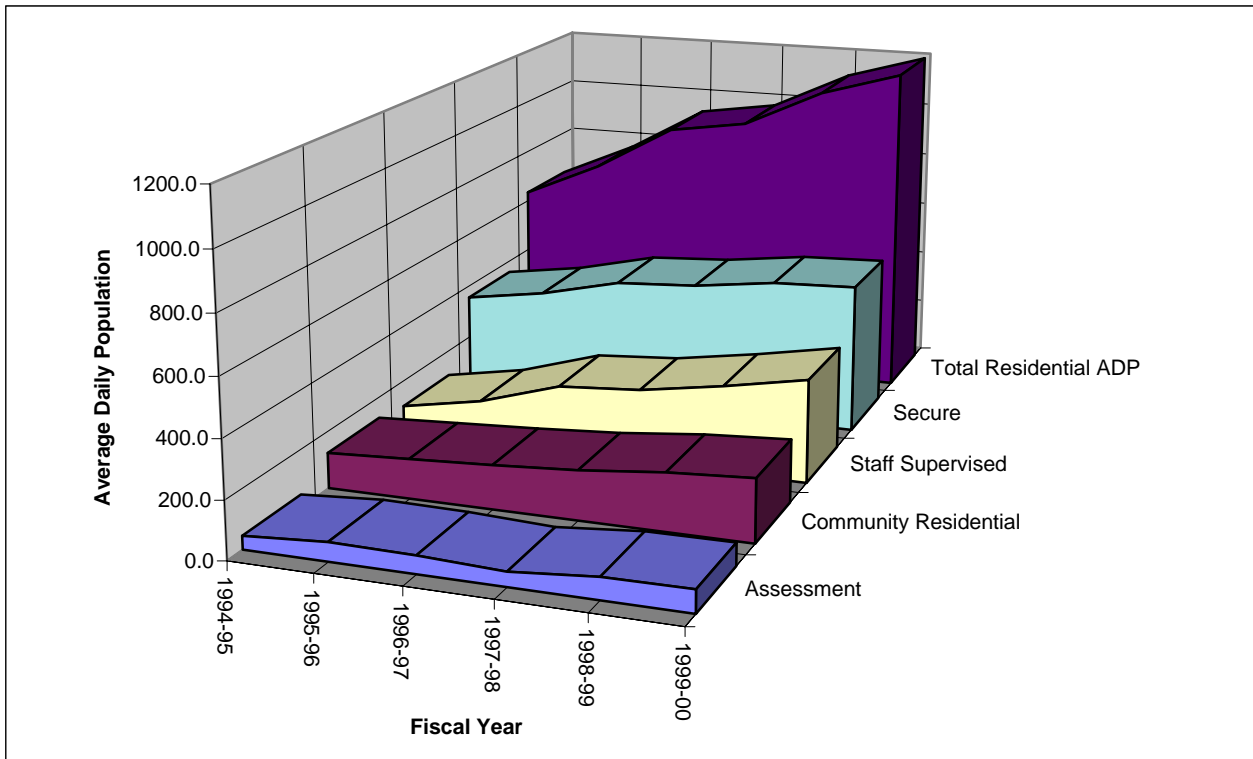
<sup>1</sup>Clients served is defined in the *Glossary of Terms* on page ii. Totals on this page for clients served are unduplicated within each category.

<sup>2</sup>Residential LOS is the average length of stay in months for youth discharged during the time period. Only those youth who spent any time in a program/facility are included in the LOS calculations. Youth might not have spent time in a particular program during the current fiscal year.

**DIVISION OF YOUTH CORRECTIONS  
ADP TRENDS IN  
RESIDENTIAL PROGRAMS**

**Fiscal Years:**

	<b>1994-95</b>	<b>1995-96</b>	<b>1996-97</b>	<b>1997-98</b>	<b>1998-99</b>	<b>1999-00</b>
Assessment	46.5	65.6	62.0	50.0	75.0	77.9
Secure	355.6	399.6	467.7	485.1	522.9	534.6
Staff Supervised	106.6	157.9	245.2	265.2	311.7	365.7
Community Residential	125.2	139.8	154.4	173.2	202.7	220.1
<b>Total Residential ADP</b>	<b>633.9</b>	<b>762.9</b>	<b>929.3</b>	<b>973.5</b>	<b>1,112.3</b>	<b>1,198.3</b>



**TRENDS IN COMMITMENT LENGTH OF STAY BY PROGRAM TYPE<sup>1</sup>**  
**FY 1997-98 through FY 1999-00**

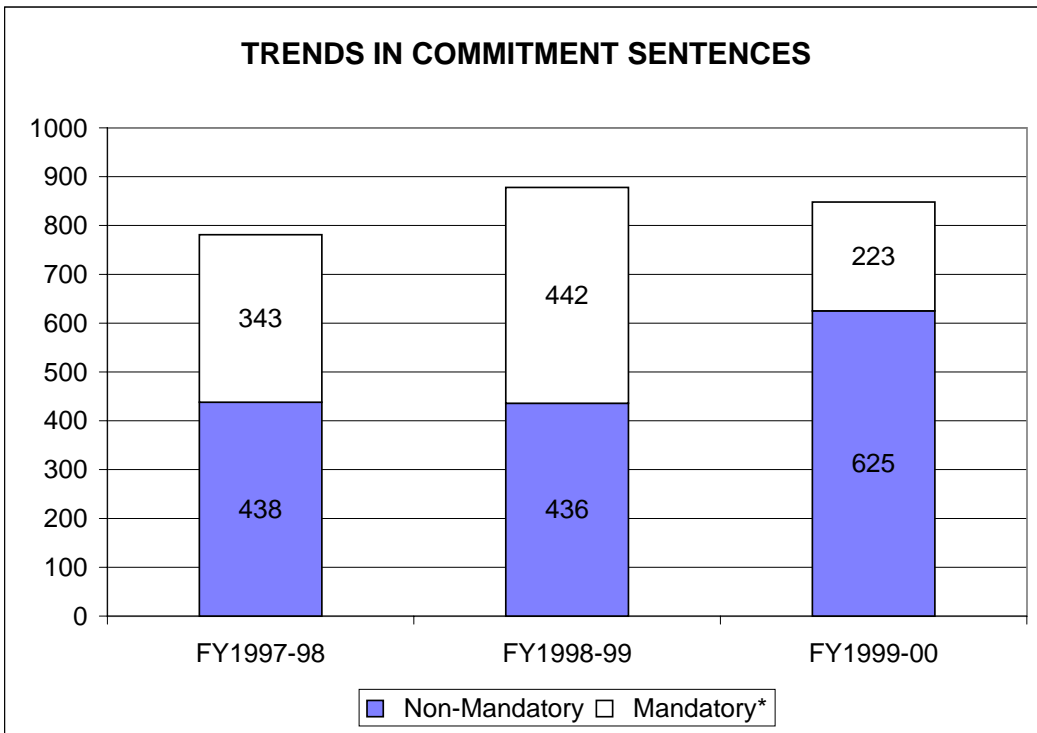
<b><u>Program Type</u></b>	<b><u>FY 1997-98</u></b>	<b><u>FY 1998-99</u></b>	<b><u>FY 1999-00</u></b>
Assessment	1.0	1.0	1.0 months
Commitment Secure/Staff Supervised	11.3	11.7	11.4 months
Community Residential	5.2	5.2	5.1 months
Total Residential	15.1	15.6	15.5 months
Total Parole	6.8	8.2	11.0 months
Total Commitment	22.1	23.6	25.8 months

---

<sup>1</sup>Length of stay in the *Glossary of Terms* on page ii.

**DIVISION OF YOUTH CORRECTIONS**  
**POPULATION TRENDS**  
**BY SENTENCE AND COMMITMENT TYPE**  
**FY 1997-98 through FY 1999-00**

	FY 1997-98		FY 1998-99		FY 1999-00	
<b>NEW COMMITMENT SENTENCE TYPE</b>	<b>N</b>	<b>%</b>	<b>N</b>	<b>%</b>	<b>N</b>	<b>%</b>
<b>Mandatory:</b>						
Mandatory Offender	269	34.4%	336	38.3%	159	18.8%
Repeat Offender	60	7.7%	84	9.6%	39	4.6%
Violent Offender	6	0.8%	11	1.3%	4	0.5%
Aggravated Juvenile Offender	8	1.0%	11	1.3%	21	2.5%
<b>Non-Mandatory</b>	<b>438</b>	<b>56.1%</b>	<b>436</b>	<b>49.7%</b>	<b>625</b>	<b>73.7%</b>
<b>TOTAL</b>	<b>781</b>	<b>100.0%</b>	<b>878</b>	<b>100.0%</b>	<b>848</b>	<b>100.0%</b>



\*Mandatory refers to *mandatory*, *aggravated juvenile*, *repeat*, and *violent* commitment sentences.

	FY 1997-98		FY 1998-99		FY 1999-00	
<b>COMMITMENT TYPE</b>	<b>N</b>	<b>%</b>	<b>N</b>	<b>%</b>	<b>N</b>	<b>%</b>
New Commitment	781	81.4%	878	82.3%	848	76.9%
Concurrent	160	16.7%	161	15.1%	217	19.7%
Consecutive	18	1.9%	28	2.6%	38	3.4%
<b>TOTAL</b>	<b>959</b>	<b>100.0%</b>	<b>1,067</b>	<b>100.0%</b>	<b>1,103</b>	<b>100.0%</b>

DIVISION OF YOUTH CORRECTIONS

POPULATION TRENDS BY COMMITMENT CLASSIFICATION SCORES<sup>1</sup>

FY 1997-98 through FY1999-00

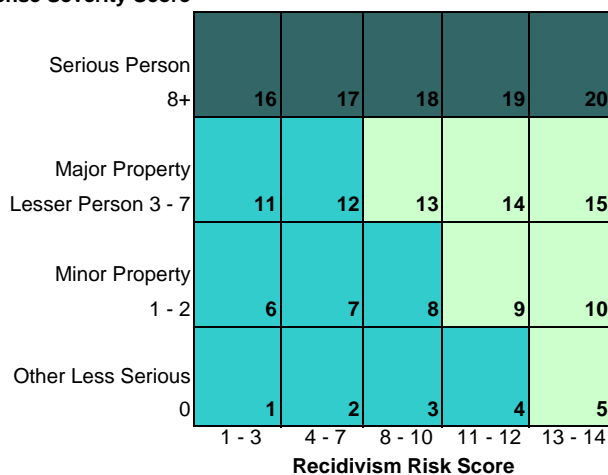
NEW COMMITMENT CLASSIFICATION	FY 1997-98		FY 1998-99		FY 1999-00	
	N	%	N	%	N	%
Cell 1	1	0.1%	4	0.5%	3	0.4%
Cell 2	15	1.7%	14	1.7%	19	2.2%
Cell 3	19	2.2%	41	4.8%	43	5.1%
Cell 4	25	2.8%	31	3.7%	42	5.0%
Cell 5	8	0.9%	16	1.9%	8	0.9%
Cell 6	0	0.0%	0	0.0%	0	0.0%
Cell 7	17	1.9%	18	2.1%	10	1.2%
Cell 8	51	5.8%	54	6.4%	63	7.4%
Cell 9	60	6.8%	47	5.5%	55	6.5%
Cell 10	50	5.7%	44	5.2%	39	4.6%
Cell 11	7	0.8%	11	1.3%	5	0.6%
Cell 12	86	9.8%	92	10.8%	71	8.4%
Cell 13	149	17.0%	192	22.6%	167	19.7%
Cell 14	98	11.2%	101	11.9%	100	11.8%
Cell 15	0	0.0%	0	0.0%	0	0.0%
Cell 16	31	3.5%	31	3.7%	31	3.7%
Cell 17	95	10.8%	84	9.9%	109	12.9%
Cell 18	62	7.1%	95	11.2%	78	9.2%
Cell 19 <sup>2</sup>	---	---	---	---	---	---
Cell 20 <sup>2</sup>	---	---	---	---	---	---
Cell Not Available	7	0.8%	3	0.4%	5	0.6%
<b>TOTAL</b>	<b>781</b>	<b>89.0%</b>	<b>878</b>	<b>103.5%</b>	<b>848</b>	<b>100.0%</b>

<sup>1</sup>Commitment classification score is calculated during assessment at time of commitment.

The commitment classification methodology is being reexamined.

<sup>2</sup>Scoring of the classification grid does not allow youth to fall into this cell.

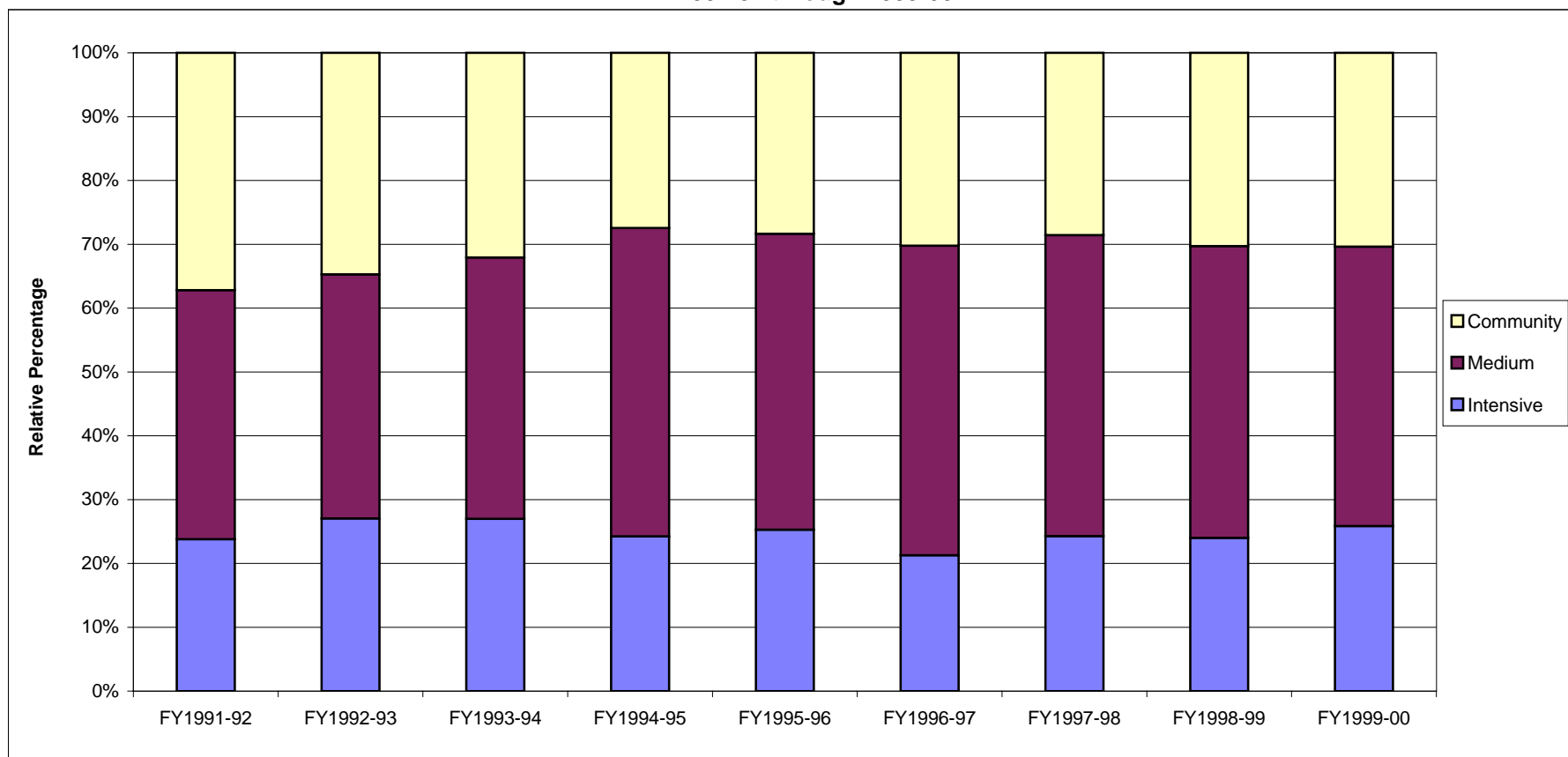
Offense Severity Score



Community Medium Secure Intensive Secure



**DIVISION OF YOUTH CORRECTIONS  
CLASSIFICATION TRENDS OF NEW COMMITMENTS  
FY1991-92 through 1999-00**



	<b>Intensive</b>		<b>Medium</b>		<b>Community</b>	
	<i>n</i>	%	<i>n</i>	%	<i>n</i>	%
<b>FY1991-92</b>	144	24%	236	39%	225	37%
<b>FY1992-93</b>	145	27%	205	38%	186	35%
<b>FY1993-94</b>	149	27%	226	41%	177	32%
<b>FY1994-95</b>	144	24%	287	48%	163	27%
<b>FY1995-96</b>	174	25%	319	46%	195	28%
<b>FY1996-97</b>	162	21%	369	48%	230	30%
<b>FY1997-98</b>	188	24%	365	47%	221	29%
<b>FY1998-99</b>	210	24%	400	46%	265	30%
<b>FY1999-00</b>	218	26%	369	44%	256	30%

NOTE: Fiscal year totals might not match what is reported elsewhere in this manual since classification data was not yet available on all new commitments at the time these data were prepared.

**DIVISION OF YOUTH CORRECTIONS**

**PAROLE  
POPULATION TRENDS**

FY 1997-98 through FY 1999-00

REGION	FY 1997-98			FY 1998-99			FY 1999-00		
	No. of Clients Served <sup>1</sup>	ADC <sup>2</sup>	LOS <sup>3</sup> (mos.)	No. of Clients Served <sup>1</sup>	ADC <sup>2</sup>	LOS <sup>3</sup> (mos.)	No. of Clients Served <sup>1</sup>	ADC <sup>2</sup>	LOS <sup>3</sup> (mos.)
Southern	152	57.8	6.7	220	91.1	8.6	320	154.4	11.3
Western	118	37.3	6.3	157	69.9	8.9	187	93.5	11.4
Denver	146	50.4	6.6	152	55.7	7.9	221	105.6	11.6
Central	181	63.7	7.8	202	79.0	8.5	279	132.6	10.5
Northeast	128	45.9	6.4	181	70.5	7.4	236	115.7	10.1
TOTAL <sup>4</sup>	725	255.0	6.8	914	366.1	8.2	1,243	601.7	11.0

**PAROLE  
POPULATION CHARACTERISTICS  
FY 1999-00**

SEX:	ADC <sup>2</sup>	%	AGE <sup>5</sup> :	ADC <sup>2</sup>	%	PAROLE PLACEMENT TYPE:	ADC	%	LOS
Male	530.7	88.2%	13	0.7	0.1%				
Female	71.0	11.8%	14	4.1	0.7%	Nonresidential	426.0	70.8%	8.4
			15	14.4	2.4%	Residential	74.8	12.4%	3.1
TOTAL	601.7	100.0%	16	41.8	6.9%	Custody	88.0	14.6%	2.6
			17	120.1	20.0%	Other	12.9	2.1%	3.0
ETHNICITY:			18	180.3	30.0%				
Anglo	290.4	48.3%	19 and over	240.3	39.9%				
African-American	96.5	16.0%							
Hispanic/Latino	196.3	32.6%							
Native-American	5.3	0.9%							
Asian-American	5.2	0.9%							
Other	8.0	1.3%							

Average Age of Youth on Parole<sup>5</sup>: 18.5 years

JOB/SCHOOL STATUS AT TIME OF PAROLE DISCHARGE <sup>6</sup> :	N	%	ORIGINAL SENTENCE TYPE <sup>7</sup> :	ADC <sup>2</sup>	%
Employed only	170	41.0%	Non-Mandatory	315.5	52.4%
Enrolled in school only	56	13.5%	Mandatory	226.9	37.7%
Employed and enrolled in school	83	20.0%	Repeat	48.5	8.1%
Unemployed and not in School	106	25.5%	Violent	7.3	1.2%
TOTAL DISCHARGED	415	100.0%	Aggravated Juvenile	3.6	0.6%
			Adult	0.0	0.0%

<sup>1</sup>Clients served counts are unduplicated.

<sup>2</sup>Average Daily Caseload (ADC) is the average number of youth on parole active status during the time period.

This includes youth under parole supervision as part of the Interstate Compact on Juveniles (ICJ). Youth on parole who were on escape status during the time period are not included.

<sup>3</sup>Parole length of stay is defined in the *Glossary of Terms* on page ii.

<sup>4</sup>Interstate Compact is included in total clients served. Total clients served may not equal the sum of the five regions since youth may be served in more than one region.

<sup>5</sup>Calculated based on age of youth on the last day of the fiscal year.

<sup>6</sup>Includes only youth who were on parole at time of discharge. Captures job/School status on day of discharge.

<sup>7</sup>This represents sentence type at time of original commitment only. If youth were recommitted, sentence type can change.

**DIVISION OF YOUTH CORRECTIONS**  
**COLORADO JUVENILE COMMITMENT RATE**  
**BY COUNTY<sup>1</sup>**  
**FY1997-98 through FY1999-00**

<b>County of Commitment</b>	<b>Juvenile Population Age 10-17 yrs.<sup>2</sup></b>	<b>Number of New Commitments FY 1999-00<sup>3</sup></b>	<b>Number Juvenile Commitments Per 100,000 Juvenile Population<sup>4</sup></b>		
			<b><u>FY 1997-98</u></b>	<b><u>FY 1998-99</u></b>	<b><u>FY 1999-00</u></b>
Adams	41,967	65	114	179	155
Arapahoe	57,745	56	109	127	97
Boulder	30,669	19	96	50	62
Denver	58,406	167	270	359	286
Douglas	21,366	7	73	66	33
El Paso	59,142	98	180	198	166
Jefferson	59,987	100	158	153	167
Larimer	27,318	49	141	111	179
Mesa	13,726	42	404	264	306
Pueblo	15,718	34	165	134	216
Weld	21,564	60	160	252	278
<b>STATE TOTAL<sup>4</sup></b>	489,752	848	167	184	173

<sup>1</sup>Only counties with juvenile populations over 10,000 are included.

<sup>2</sup>Population figures for ages 10 through 17 are estimates derived from 1990 intercensus population estimates, Colorado Department of Local Affairs. (<http://www.dlg.oem2.state.co.us/demog/datalist.htm>) Estimates are for calendar year 2000.

<sup>3</sup>Number represents the number of NEW commitments from that county.

<sup>4</sup>Commitment rates for prior fiscal years have been updated using more current population estimates and therefore may be different from what was reported in prior Management Reference Manuals.

**DIVISION OF YOUTH CORRECTIONS**

**COMMITTED YOUTH  
DEMOGRAPHIC TRENDS  
FY 1997-98 through FY 1999-00**

	FY 1997-98				FY 1998-99				FY 1999-00			
	No. of New Commit- ments	%	ADP	Res. LOS (Mos.)	No. of New Commit- ments	%	ADP	Res. LOS (Mos.)	No. of New Commit- ments	%	ADP	Res. LOS (Mos.)
<b>SEX</b>												
Male	678	86.8%	891.0	15.3	769	87.6%	992.6	16.0	738	87.0%	1,058.3	15.9
Female	103	13.2%	82.1	12.9	109	12.4%	119.6	12.7	110	13.0%	140.0	13.0
TOTAL	781	100.0%	973.1	15.1	878	100.0%	1,112.2	15.6	848	100.0%	1,198.3	15.5
<b>ETHNICITY</b>												
Anglo	396	50.7%	478.4	14.8	410	46.7%	541.0	15.7	389	45.9%	561.2	15.9
African-American	122	15.6%	148.1	16.8	144	16.4%	188.0	16.4	104	12.3%	195.6	16.3
Hispanic/Latino	238	30.5%	318.5	14.9	297	33.8%	347.7	15.2	326	38.4%	401.1	14.1
Native American	9	1.2%	10.8	12.8	14	1.6%	12.5	13.7	6	0.7%	16.3	10.6
Asian-American	8	1.0%	6.2	12.1	4	0.5%	8.3	13.8	6	0.7%	6.5	14.3
Other	8	1.0%	11.1	14.9	9	1.0%	14.7	16.5	17	2.0%	17.6	20.4
<b>AGE<sup>1</sup></b>												
12 Years	6	0.8%	0.3	23.7	3	0.3%	0.4	18.7	5	0.6%	0.2	18.3
13 Years	28	3.6%	4.6	18.1	37	4.2%	9.4	20.6	32	3.8%	5.3	17.4
14 Years	80	10.2%	28.2	16.8	84	9.6%	35.7	19.3	88	10.4%	38.3	20.4
15 Years	171	21.9%	93.5	16.4	174	19.8%	94.5	17.1	184	21.7%	102.2	17.0
16 Years	224	28.7%	175.9	14.7	266	30.3%	210.1	15.3	235	27.7%	211.5	14.9
17 Years	242	31.0%	267.4	13.4	278	31.7%	313.2	13.4	263	31.0%	325.2	13.5
18 Years	27	3.5%	273.5	12.7	32	3.6%	305.7	12.7	37	4.4%	326.4	14.3
19 Years	3	0.4%	115.1	6.7	3	0.3%	116.5	11.1	2	0.2%	156.3	16.5
20 Years	0	0.0%	12.5	9.4	1	0.1%	24.7	5.1	2	0.2%	29.3	0.0
21 Years	0	0.0%	2.1	0.0	0	0.0%	2.1	0.0	0	0.0%	3.6	0.0
<b>Average Age</b>												
<b>at Commitment:</b>	16.4 Years				16.4 Years				16.3 Years			

<sup>1</sup>Actual counts and LOS for each age category correspond to age at commitment. ADP figures for each age category, however, are based on the youth's age on the last day of the fiscal year.

**DIVISION OF YOUTH CORRECTIONS  
COMMITMENT POPULATION CHARACTERISTICS BY GENDER  
FY1997-98 through FY1999-00**

	MALES						FEMALES					
	FY1997-98		FY1998-99		FY1999-00		FY1997-98		FY1998-99		FY1999-00	
	n	%	n	%	n	%	n	%	n	%	n	%
<b>DEMOGRAPHIC DATA<sup>1</sup></b>												
Ethnicity												
Anglo:	339	50.0%	343	44.6%	338	45.8%	57	55.3%	67	61.5%	51	46.4%
African-American:	110	16.2%	136	17.7%	90	12.2%	12	11.7%	8	7.3%	14	12.7%
Hispanic/Latino:	207	30.5%	265	34.5%	284	38.5%	31	30.1%	32	29.4%	42	38.2%
Native American:	8	1.2%	12	1.6%	5	0.7%	1	1.0%	2	1.8%	1	0.9%
Asian-American:	7	1.0%	4	0.5%	6	0.8%	1	1.0%	0	0.0%	0	0.0%
Other:	7	1.0%	9	1.2%	15	2.0%	1	1.0%	0	0.0%	2	1.8%
TOTAL NEW COMMITMENTS	678	100.0%	769	100.0%	738	100.0%	103	100.0%	109	100.0%	110	100.0%
Age												
12 Years	6	0.9%	2	0.3%	4	0.5%	0	0.0%	1	0.9%	1	0.9%
13 Years	21	3.1%	32	4.2%	28	3.8%	7	6.8%	5	4.6%	4	3.6%
14 Years	67	9.9%	67	8.7%	80	10.8%	13	12.6%	17	15.6%	8	7.3%
15 Years	148	21.8%	153	19.9%	152	20.6%	23	22.3%	21	19.3%	32	29.1%
16 Years	190	28.0%	233	30.3%	202	27.4%	34	33.0%	33	30.3%	33	30.0%
17 Years	220	32.4%	251	32.6%	235	31.8%	22	21.4%	27	24.8%	28	25.5%
18 Years	23	3.4%	27	3.5%	33	4.5%	4	3.9%	5	4.6%	4	3.6%
19 Years	3	0.4%	3	0.4%	2	0.3%	0	0.0%	0	0.0%	0	0.0%
20 Years	0	0.0%	1	0.1%	2	0.3%	0	0.0%	0	0.0%	0	0.0%
Average Age at Commitment <sup>2</sup> :	16.4 Yrs.		16.4 Yrs.		16.4 Yrs.		16.2 Yrs.		16.1 Yrs.		16.2 Yrs.	
<b>NEW COMMITMENT PROFILE</b>												
Prior Adjudications												
None:	136	20.1%	166	21.6%	167	22.6%	41	39.8%	47	43.1%	45	40.9%
One:	207	30.5%	204	26.5%	211	28.6%	37	35.9%	25	22.9%	29	26.4%
Two or more:	335	49.4%	399	51.9%	360	48.8%	25	24.3%	37	33.9%	36	32.7%
Prior Out-of-Home Placements												
None:	163	24.0%	168	21.8%	153	20.7%	16	15.5%	12	11.0%	11	10.0%
One:	133	19.6%	160	20.8%	170	23.0%	18	17.5%	15	13.8%	14	12.7%
Two or more:	382	56.3%	441	57.3%	415	56.2%	69	67.0%	82	75.2%	85	77.3%
Runaway History <sup>2</sup>												
No runaway history:	267	39.4%	315	41.0%	304	41.2%	19	18.4%	18	16.5%	21	19.1%
Runaway history:	409	60.3%	452	58.8%	430	58.3%	83	80.6%	91	83.5%	89	80.9%
Missing Data:	2	0.3%	2	0.3%	4	0.5%	1	1.0%	0	0.0%	0	0.0%
Assessed Substance Abuse Counseling Needs <sup>3</sup>												
Prevention:	101	14.9%	113	14.7%	111	15.0%	11	10.7%	11	10.1%	20	18.2%
Intervention:	180	26.5%	231	30.0%	275	37.3%	26	25.2%	22	20.2%	33	30.0%
Treatment:	390	57.5%	422	54.9%	343	46.5%	65	63.1%	76	69.7%	56	50.9%
Missing Data:	7	1.0%	3	0.4%	9	1.2%	1	1.0%	0	0.0%	1	0.9%
Average Age at First Adjudication:	14.2 Yrs.		14.1 Yrs.		14.1 Yrs.		14.3 Yrs.		14.4 Yrs.		14.3 Yrs.	
<b>POPULATION DATA</b>												
Average Daily Population												
Assessment:		43.6		65.2		68.5		6.35		9.34		9.6
Commitment Secure/Staff Supervised:		688.4		749.3		803.2		61.9		85.1		96.9
Community Residential:		159.0		177.7		186.6		14.0		25.0		33.5
Total Residential:		891.0		992.3		1,058.3		82.2		119.5		140.0
Parole <sup>4</sup> :		224.8		323.7		530.7		30.2		42.4		71.0

<sup>1</sup>Data are based on NEW commitments.

<sup>2</sup>Refers to running away from a secure or nonsecure placement as well as from home during the 12 months prior to commitment.

<sup>3</sup>Substance abuse history and treatment needs are assessed within one month of commitment. Youth with minimal substance abuse history and/or treatment needs are identified for *prevention* services whereas those reporting the greatest history of abuse and treatment needs are targeted for substance abuse *treatment* services.

<sup>4</sup>Only youth actively on parole are included in ADP calculations; youth who were on escape status during the time period are excluded.

**DIVISION OF YOUTH CORRECTIONS  
COMMITMENT POPULATION CHARACTERISTICS BY GENDER  
FY1997-98 through FY1999-00**

	MALES						FEMALES					
	FY1997-98		FY1998-99		FY1999-00		FY1997-98		FY1998-99		FY1999-00	
	n	%	n	%	n	%	n	%	n	%	n	%
<b>COMMITMENT DATA<sup>1</sup></b>												
Offense Type												
Person Felony:	155	22.9%	153	19.9%	177	24.0%	22	21.4%	13	11.9%	16	14.5%
Person Misdemeanor:	94	13.9%	141	18.3%	118	16.0%	17	16.5%	30	27.5%	25	22.7%
Property Felony:	285	42.0%	264	34.3%	247	33.5%	32	31.1%	28	25.7%	35	31.8%
Property Misdemeanor:	50	7.4%	63	8.2%	60	8.1%	15	14.6%	21	19.3%	17	15.5%
Drug Felony:	41	6.0%	59	7.7%	40	5.4%	3	2.9%	5	4.6%	5	4.5%
Drug Misdemeanor:	1	0.1%	3	0.4%	5	0.7%	0	0.0%	1	0.9%	1	0.9%
Weapons Felony:	8	1.2%	10	1.3%	3	0.4%	0	0.0%	1	0.9%	0	0.0%
Weapons Misdemeanor:	15	2.2%	26	3.4%	28	3.8%	3	2.9%	0	0.0%	1	0.9%
Other:	25	3.7%	48	6.2%	56	7.6%	10	9.7%	9	8.3%	10	9.1%
Missing Data:	4	0.6%	2	0.3%	4	0.5%	1	1.0%	1	0.9%	0	0.0%
TOTAL NEW COMMITMENTS	678	100.0%	769	100.0%	738	100.0%	103	100.0%	109	100.0%	110	100.0%
Commitment Sentence Type												
Non-Mandatory:	368	54.3%	366	47.6%	536	72.6%	70	68.0%	70	64.2%	89	80.9%
Mandatory:	243	35.8%	305	39.7%	141	19.1%	26	25.2%	31	28.4%	18	16.4%
Repeat:	54	8.0%	78	10.1%	37	5.0%	6	5.8%	6	5.5%	2	1.8%
Violent:	6	0.9%	9	1.2%	4	0.5%	0	0.0%	2	1.8%	0	0.0%
Aggravated Juvenile:	7	1.0%	11	1.4%	20	2.7%	1	1.0%	0	0.0%	1	0.9%
New Commitment Classification												
Intensive:	167	24.6%	192	25.0%	199	27.0%	21	20.4%	18	16.5%	19	17.3%
Medium:	318	46.9%	346	45.0%	318	43.1%	49	47.6%	54	49.5%	51	46.4%
Community:	189	27.9%	228	29.6%	217	29.4%	32	31.1%	37	33.9%	39	35.5%
Missing Data:	4	0.6%	3	0.4%	4	0.5%	1	1.0%	0	0.0%	1	0.9%
Commitment Type												
New Commitment:	678	80.8%	769	82.1%	738	76.4%	103	85.8%	109	83.8%	110	80.3%
Concurrent:	145	17.3%	143	15.3%	198	20.5%	15	12.5%	18	13.8%	19	13.9%
Consecutive:	16	1.9%	25	2.7%	30	3.1%	2	1.7%	3	2.3%	8	5.8%
TOTAL COMMITMENTS	839	100.0%	937	100.0%	966	100.0%	120	100.0%	130	100.0%	137	100.0%
<b>DISCHARGE DATA<sup>2</sup></b>												
Average Age at Discharge	18.2 Yrs.		18.4 Yrs.		18.7 Yrs.		17.8 Yrs.		18.0 Yrs.		18.2 Yrs.	
Average LOS (months)												
Commitment Secure/Staff Supervised:	11.5		12.0		11.8		8.8		8.7		8.5	
Community Residential:	5.2		5.2		5.0		5.4		5.1		5.5	
Total Residential:	15.3		16.0		15.9		12.9		12.7		13.0	
Parole:	6.8		8.1		11.1		6.8		9.4		10.0	
Total Commitment:	22.1		23.8		26.3		21.3		22.4		22.6	
n            %            n            %            n            %            n            %            n            %												
Job/School Status at Time of Parole Discharge <sup>3</sup>												
Employed only	121	42.6%	109	37.8%	149	41.5%	14	36.8%	16	41.0%	21	36.2%
Enrolled in school only	52	18.3%	44	15.3%	45	12.5%	13	34.2%	6	15.4%	11	19.0%
Employed and enrolled in school	53	18.7%	77	26.7%	67	18.7%	7	18.4%	11	28.2%	16	27.6%
Unemployed and not in school	57	20.1%	57	19.8%	97	27.0%	4	10.5%	6	15.4%	9	15.5%
Missing Data:	1	0.4%	1	0.3%	1	0.3%	0	0.0%	0	0.0%	1	1.7%
TOTAL DISCHARGED	284	57.4%	288	62.2%	359	58.5%	38	63.2%	39	59.0%	58	63.8%

<sup>1</sup>Data are based on NEW commitments.

<sup>2</sup>Data are based on all youth discharged during the fiscal year.



SECTION III

**DETENTION POPULATION  
TRENDS AND CHARACTERISTICS**

**DIVISION OF YOUTH CORRECTIONS**

**DETAINED YOUTH  
POPULATION TRENDS<sup>1</sup>**

**FY 1989-90 through FY 1999-00**

<b>Fiscal Year</b>	<b>Number of Clients Served<sup>2</sup></b>	<b>Percentage Change +/-</b>	<b>No. of New Admissions</b>	<b>Percentage Change +/-</b>	<b>ADP</b>	<b>Percentage Change +/-</b>	<b>LOS</b>	<b>Percentage Change +/-</b>
1989-90	5,394		10,669		344.5		10.0	
1990-91	5,920	9.8%	11,402	6.9%	375.0	8.9%	10.8	8.0%
1991-92	6,548	10.6%	11,988	5.1%	380.6	1.5%	11.6	7.4%
1992-93	6,820	4.2%	12,388	3.3%	403.2	5.9%	12.0	3.4%
1993-94	7,800	14.4%	16,197	30.7%	467.8	16.0%	10.4	-13.3%
1994-95	8,807	12.9%	16,638	2.7%	589.0	25.9%	13.2	26.9%
1995-96	7,870	-10.6%	13,852	-16.7%	541.5	-8.1%	13.7	3.8%
1996-97	8,303	5.5%	14,652	5.8%	522.5	-3.5%	13.0	-5.1%
1997-98	8,785	5.8%	15,428	5.3%	591.8	13.3%	13.9	7.2%
1998-99	8,924	1.6%	15,212	-1.4%	602.4	1.8%	14.6	4.5%
1999-00	8,799	-1.4%	15,294	0.5%	589.1	-2.2%	14.3	-1.9%

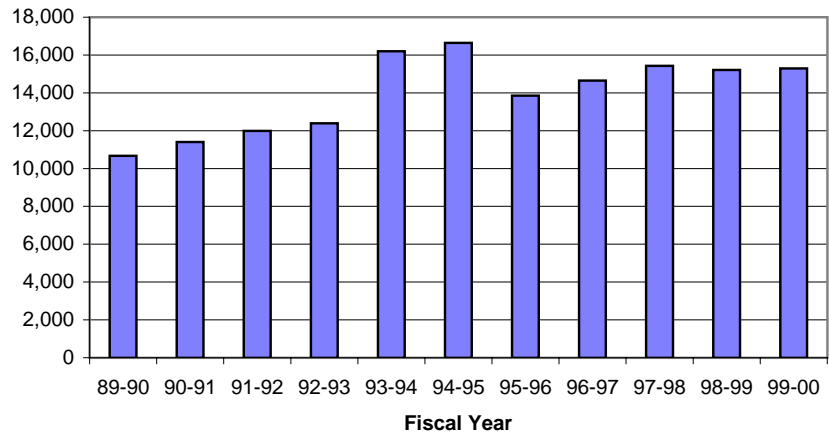
<sup>1</sup>Contracted holding facilities are used in detention totals.

<sup>2</sup>Clients served counts are unduplicated.

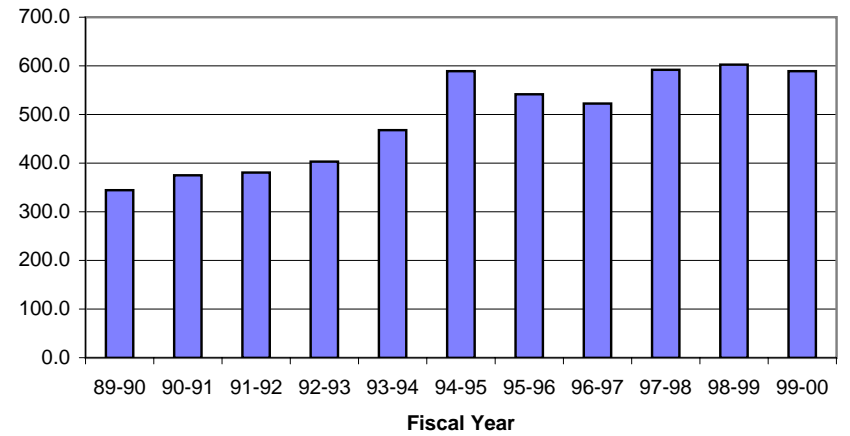


**DIVISION OF YOUTH CORRECTIONS**  
**Trends in Detention Populations**  
**FY1989-90 through FY1999-00**

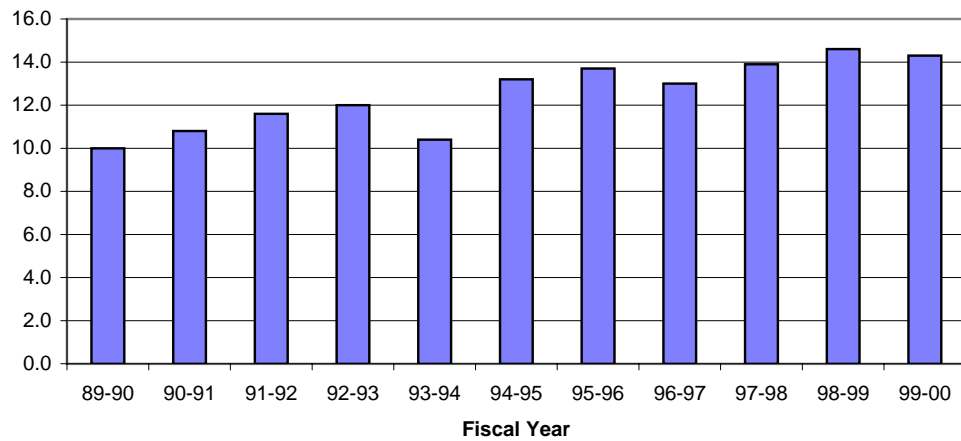
**TRENDS IN DETENTION ADMISSIONS**



**TRENDS IN DETENTION ADP**



**TRENDS IN DETENTION LOS**



**DIVISION OF YOUTH CORRECTIONS**  
**DETENTION POPULATION TRENDS BY PROGRAM TYPE**  
**FY 1997-98 through FY 1999-00**

	FY 1997-98				FY 1998-99				FY 1999-00			
	Clients		LOS		Clients		LOS		Clients		LOS	
	Served <sup>1</sup>	Adm	ADP (days)		Served <sup>1</sup>	Adm	ADP (days)		Served <sup>1</sup>	Adm	ADP (days)	
<b>STATE OPERATED:</b>												
Adams YSC	881	1,049	37.4	13.1	564	713	32.6	17.0	547	698	28.5	15.4
Gilliam YSC	1,448	1,904	65.7	12.6	1,573	2,057	68.4	12.2	1,453	1,946	70.3	12.9
Grand Mesa YSC	518	669	30.7	17.1	512	680	31.5	16.9	493	671	29.5	15.7
Marvin Foote YSC <sup>2</sup>	1,511	1,992	97.9	17.9	1,377	1,857	67.7	13.9	1,383	1,965	67.1	13.7
Mount View YSC	1,717	2,316	84.3	15.4	1,433	1,901	85.7	17.3	1,299	1,760	64.2	14.0
Platte Valley YSC <sup>3</sup>	709	1,161	30.7	8.9	1,112	1,971	63.6	12.0	1,167	2,161	63.0	10.7
Pueblo YSC	890	1,311	45.2	12.5	807	1,169	41.4	13.4	805	1,208	47.3	14.3
Spring Creek YSC <sup>4</sup>	647	901	20.4	7.3	1,524	2,295	78.7	12.4	1,570	2,395	86.3	13.4
Zeb Pike <sup>5</sup>	970	1,447	38.4	10.0	0	0	0.0	0.0	0	0	0.0	0.0
<b>SUBTOTAL STATE OPERATED</b>	<b>7,642</b>	<b>12,750</b>	<b>450.7</b>	<b>13.3</b>	<b>7,823</b>	<b>12,643</b>	<b>469.5</b>	<b>13.8</b>	<b>7,704</b>	<b>12,804</b>	<b>456.1</b>	<b>13.3</b>
<b>PRIVATELY OPERATED</b>												
Staff Secure:												
Colorado West	46	61	2.9	13.6	51	60	3.3	17.4	53	62	2.3	14.6
Dahlia Street	873	1,003	23.3	8.3	832	919	24.5	9.3	701	765	20.15	11.0
Gateway (Central)	31	31	0.9	9.2	37	40	1.1	11.3	4	3	1.1	16.6
Gateway (Southern)	9	10	0.9	9.0	36	42	1.8	13.8	56	60	1.9	12.0
Hilltop Youth Services	55	58	2.8	18.8	50	50	3.0	20.8	49	50	2.9	21.5
LaPlata Youth Services	38	48	0.9	7.0	47	49	1.2	9.3	9	9	0.4	17.4
Midway Shelter	136	142	6.7	16.7	169	185	6.8	13.9	154	171	8.1	17.9
Moffat County	35	46	1.4	9.9	34	43	2.0	18.0	32	53	1.1	7.7
Montezuma Partners	25	25	0.1	0.9	0	0	0.0	0.0	0	0	0.0	0.0
Northwest Child Placement	6	9	1.0	58.0	0	0	0.0	0.0	0	0	0.0	0.0
Robert DeNier <sup>6</sup>	0	0	0.0	0.0	0	0	0.0	0.0	62	76	4.8	17.0
Top of The Trail	5	5	0.0	0.6	3	3	0.0	3.2	0	0	0.0	0.0
Youthtrack Alamosa	156	203	9.3	13.1	136	197	12.1	14.5	221	275	6.15	8.3
Youthtrack Fillmore	527	586	13.1	5.3	458	536	8.6	4.4	436	501	7.0	5.0
Subtotal Staff Secure	1,841	2,227	63.3	9.1	1,836	2,124	64.4	9.7	1,762	2,025	55.9	10.3
Boot Camp	518	451	77.9	58.0	523	445	68.6	57.8	541	465	77.1	59.0
<b>SUBTOTAL PRIVATELY OPERATED</b>	<b>NA</b>	<b>2,678</b>	<b>141.1</b>	<b>17.2</b>	<b>NA</b>	<b>2,569</b>	<b>133.0</b>	<b>18.2</b>	<b>2,243</b>	<b>2,490</b>	<b>133.0</b>	<b>19.4</b>
<b>TOTAL DETENTION</b>	<b>8,785</b>	<b>15,428</b>	<b>591.8</b>	<b>13.9</b>	<b>8,924</b>	<b>15,212</b>	<b>602.4</b>	<b>14.6</b>	<b>8,799</b>	<b>15,294</b>	<b>589.1</b>	<b>14.3</b>

<sup>1</sup>Clients served counts are unduplicated.

<sup>2</sup>Marvin Foote YSC began accepting youth in April 1997.

<sup>3</sup>Platte Valley YSC began accepting youth in November, 1997.

<sup>4</sup>Spring Creek YSC began accepting youth in February, 1998.

<sup>5</sup>Zeb Pike YSC was converted from a detention to a commitment facility in July, 1998.

<sup>6</sup>Robert DeNier Youth Services Center began providing secure services in January, 2000 and is a state-owned privately operated facility.

**DIVISION OF YOUTH CORRECTIONS**  
**COLORADO JUVENILE DETENTION RATES**  
**BY COUNTY<sup>1</sup>**  
**FY1997-98 through FY1999-00**

<b>County of Offense</b>	<b>Juvenile Population Age 10-17 yrs.<sup>2</sup></b>	<b>Number Juvenile Admissions FY 1999-00</b>	<b>Number Juvenile Admissions Per 100,000 Juvenile Population<sup>3</sup></b>		
			<b><u>FY 1997-98</u></b>	<b><u>FY 1998-99</u></b>	<b><u>FY 1999-00</u></b>
Adams	41,967	739	2,180	1,961	1,761
Arapahoe	57,745	1,618	2,797	2,750	2,802
Boulder	30,669	916	3,009	2,926	2,987
Denver	58,406	3,309	6,901	6,340	5,666
Douglas	21,366	230	1,234	1,100	1,076
El Paso	59,142	2,061	3,761	3,567	3,485
Jefferson	59,987	1,662	3,032	3,018	2,771
Larimer	27,318	574	1,733	1,810	2,101
Mesa	13,726	453	3,507	3,444	3,300
Pueblo	15,718	1,074	6,365	6,148	6,833
Weld	21,564	757	2,577	3,216	3,510
<b>STATE TOTAL</b>	<b>489,752</b>	<b>15,294</b>	<b>3,296</b>	<b>3,181</b>	<b>3,123</b>

<sup>1</sup>Only counties with juvenile populations over 10,000 are included.

<sup>2</sup>Population figures for ages 10 through 17 are derived from the 1990 intercensus estimates, Colorado Division of Local Government. (<http://www.dlg.oem2.state.co.us/demog/datalist.htm>) Estimates are for calendar year 2000.

<sup>3</sup>Detention rates for prior fiscal years have been updated using more current population estimates and therefore may be different from what was reported in prior Management Reference Manuals.

**DIVISION OF YOUTH CORRECTIONS**

**DETENTION  
DEMOGRAPHIC TRENDS**

**FY 1997-98 through FY 1999-00**

	FY 1997-98				FY 1998-99				FY 1999-00			
	No. of New Admissions	%	ADP	LOS (days)	No. of New Admissions	%	ADP	LOS (days)	No. of New Admissions	%	ADP	LOS (days)
<b>SEX</b>												
Male	12,041	79.2%	496.7	15.1	11,657	76.2%	495.1	15.7	11,684	76.4%	483.5	15.4
Female	3,387	22.3%	95.1	9.7	3,555	23.2%	107.4	10.8	3,610	23.6%	105.6	10.9
<b>TOTAL</b>	<b>15,428</b>	<b>101.4%</b>	<b>591.8</b>	<b>13.9</b>	<b>15,212</b>	<b>99.5%</b>	<b>602.4</b>	<b>14.6</b>	<b>15,294</b>	<b>100.0%</b>	<b>589.1</b>	<b>14.3</b>
<b>ETHNICITY</b>												
Anglo	7,266	47.8%	279.1	13.8	6,967	45.6%	286.0	15.1	7,003	45.8%	281.9	14.9
African-American	2,479	16.3%	97.1	14.7	2,297	15.0%	90.3	14.6	2,127	13.9%	75.7	13.3
Hispanic/Latino	5,258	34.6%	197.4	13.6	5,440	35.6%	206.8	13.9	5,712	37.3%	213.8	13.9
Native American	131	0.9%	5.5	16.6	170	1.1%	7.0	14.7	120	0.8%	4.8	16.1
Asian-American	126	0.8%	4.7	14.9	126	0.8%	4.9	14.8	133	0.9%	5.1	14.0
Other	168	1.1%	8.0	16.9	212	1.4%	7.4	12.7	199	1.3%	7.8	15.4
<b>AGE AT ADMISSION</b>												
10 Yrs.	37	0.2%	0.9	6.6	25	0.2%	0.6	11.8	28	0.2%	0.7	9.2
11 Yrs.	79	0.5%	1.2	5.6	90	0.6%	2.5	9.3	88	0.6%	2.1	8.9
12 Yrs.	309	2.0%	9.8	11.2	331	2.2%	11.4	12.2	352	2.3%	9.7	10.0
13 Yrs.	967	6.4%	33.3	12.2	1,046	6.8%	38.3	13.6	1,137	7.4%	38.7	12.7
14 Yrs.	2,184	14.4%	74.5	12.4	2,094	13.7%	82.0	14.7	2,071	13.5%	84.8	15.1
15 Yrs.	3,301	21.7%	126.8	13.9	3,299	21.6%	135.6	15.2	3,262	21.3%	128.3	14.7
16 Yrs.	3,970	26.1%	160.8	15.1	3,865	25.3%	153.9	14.5	3,879	25.4%	156.2	15.1
17 Yrs.	4,257	28.0%	165.7	13.9	4,195	27.4%	162.3	14.2	4,289	28.0%	158.1	13.4
18 Yrs.	263	1.7%	15.2	21.9	210	1.4%	12.5	21.4	142	0.9%	7.4	21.7
19 Yrs.	56	0.4%	3.1	18.0	51	0.3%	3.3	26.7	35	0.2%	2.7	30.4
20 Yrs.	5	0.0%	0.4	29.2	6	0.0%	0.0	2.2	10	0.1%	0.4	15.3
Over 20 Yrs.	0	0.0%	0.0	0.0	0	0.0%	0.0	0.0	1	0.0%	0.0	0.5
<b>AVERAGE AGE:</b>	16.0 Yrs.				16.0 Yrs.				16.0 Yrs.			

**DIVISION OF YOUTH CORRECTIONS**

**DETENTION POPULATION BY CHARGE, REASON HELD, AND LEGAL STATUS**

FY 1997-98 through FY 1999-00

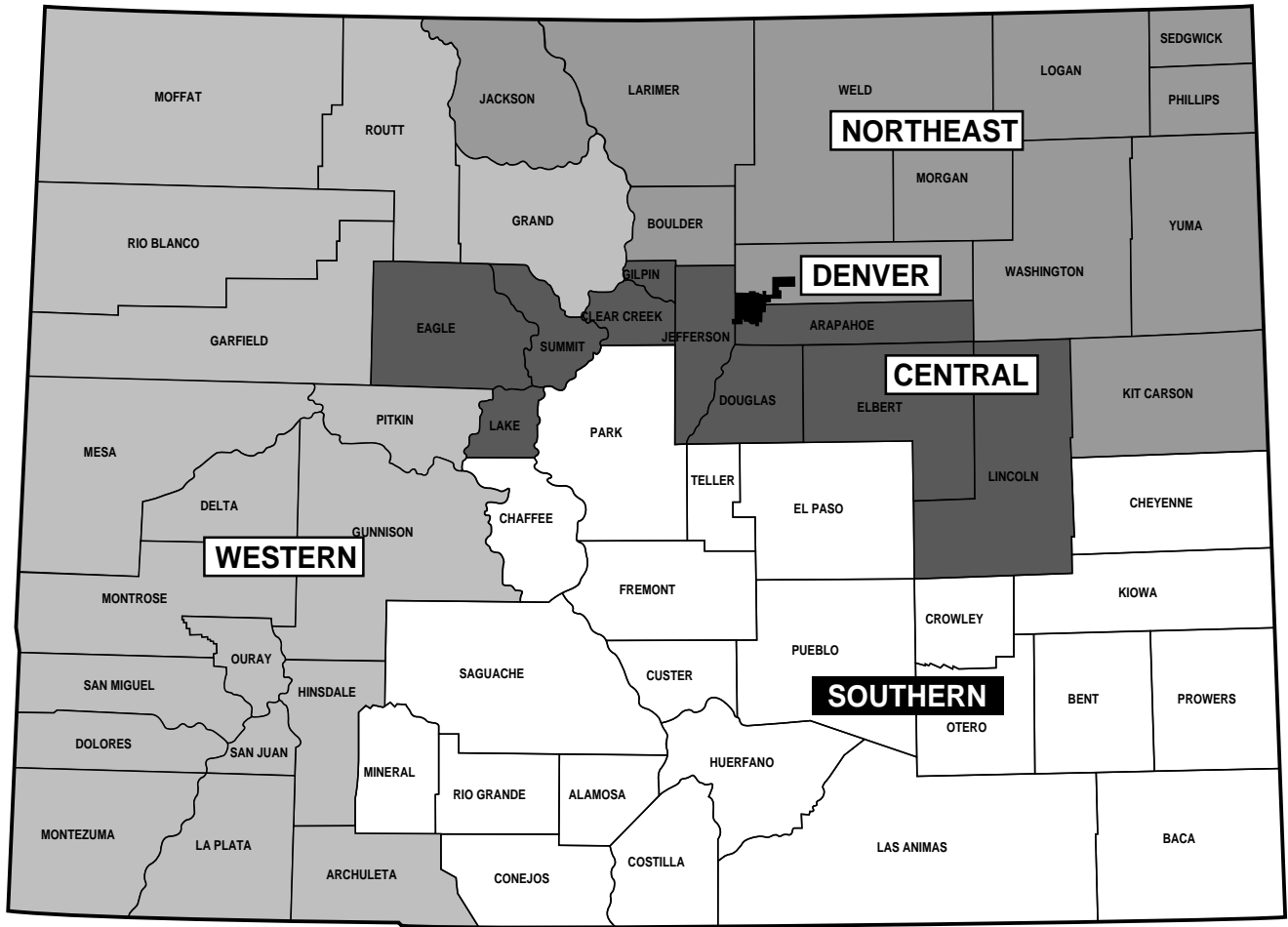
CHARGE	FY 1997-98				FY 1998-99				FY 1999-00			
	No. of New Admissions	%	ADP (days)	LOS	No. of New Admissions	%	ADP (days)	LOS	No. of New Admissions	%	ADP (days)	LOS
<b>CHARGE</b>												
Court Order	6,951	45.1%	302.5	15.4	7,379	48.5%	311.4	15.5	7,731	50.5%	293.7	14.0
Courtesy	1,404	9.1%	76.6	23.7	1,165	7.7%	54.2	17.9	794	5.2%	23.0	12.4
Curfew	0	0.0%	0.0	0.0	0	0.0%	0.0	0.0	1	0.0%	0.0	6.2
Delinquent	4,984	32.3%	175.1	12.4	4,455	29.3%	194.9	16.1	4,688	30.7%	228.5	18.0
Depend. Neglect	19	0.1%	0.1	2.3	21	0.1%	0.5	9.3	14	0.1%	0.3	4.9
Drinking under Age	11	0.1%	0.1	4.5	6	0.0%	0.1	5.6	5	0.0%	0.3	18.7
Game-Fish	7	0.0%	0.1	4.3	8	0.1%	0.2	8.8	7	0.0%	0.1	5.6
Interrupted	745	4.8%	21.4	10.5	758	5.0%	22.1	10.9	1,001	6.5%	29.7	10.9
Park-Municipal	876	5.7%	7.4	2.8	1,015	6.7%	10.7	3.4	666	4.4%	4.4	3.0
Runaway	172	1.1%	5.6	9.5	193	1.3%	4.7	8.6	223	1.5%	6.2	10.0
Traffic	259	1.7%	2.9	3.6	212	1.4%	3.7	4.2	164	1.1%	3.0	6.2
<b>TOTAL</b>	<b>15,428</b>	<b>100%</b>	<b>591.8</b>	<b>13.9</b>	<b>15,212</b>	<b>100%</b>	<b>602.4</b>	<b>14.6</b>	<b>15,294</b>	<b>100%</b>	<b>589.1</b>	<b>14.3</b>
<b>REASON HELD</b>												
Court	7,122	46.2%	272.6	13.5	7,956	52.3%	300.6	13.8	8,190	53.6%	319.8	14.3
DYC	1,535	9.9%	100.6	27.3	1,457	9.6%	71.5	19.1	1,035	6.8%	33.7	14.8
Parole	182	1.2%	7.7	16.1	162	1.1%	7.8	17.0	254	1.7%	15.5	21.9
Police	4,635	30.0%	146.2	11.1	3,595	23.6%	135.5	13.8	3,673	24.0%	127.5	12.6
Probation	1,667	10.8%	58.8	12.4	1,748	11.5%	81.3	16.8	1,882	12.3%	85.9	16.8
Situational	153	1.0%	2.3	2.7	125	0.8%	1.5	3.4	56	0.4%	0.6	4.1
Social Services	134	0.9%	3.6	9.6	169	1.1%	4.3	9.7	204	1.3%	6.1	10.6
<b>LEGAL STATUS</b>												
<b>Preadjudicated</b>	<b>10,920</b>	<b>70.8%</b>	<b>342.8</b>	<b>9.8</b>	<b>10,496</b>	<b>69.0%</b>	<b>386.9</b>	<b>11.3</b>	<b>10,167</b>	<b>66.5%</b>	<b>367.3</b>	<b>10.9</b>
<b>Sentenced</b>												
Boot Camp Sentence	452	2.9%	77.9	57.9	445	2.9%	68.6	57.8	466	3.0%	77.1	58.9
(# of Completed Sentences)	(426)				(372)				(424)			
Contempt Sentence	167	1.1%	2.5	5.8	237	1.6%	4.8	7.1	319	2.1%	10.9	13.3
(# of Completed Sentences)	(142)				(151)				(182)			
Delinquent Sentence	97	0.6%	2.5	8.5	194	1.3%	6.4	10.5	237	1.5%	8.0	15.4
(# of Completed Sentences)	(83)				(136)				(184)			
Game-Fish Sentence	0	0.0%	0.0	0.0	1	0.0%	0.0	2.2	2	0.0%	0.0	2.0
(# of Completed Sentences)	0				(1)				(2)			
Handgun Sentence	18	0.1%	0.2	7.3	22	0.1%	0.3	5.7	23	0.2%	0.2	3.8
(# of Completed Sentences)	(10)				(12)				(11)			
Municipal Sentence	274	1.8%	1.5	2.1	256	1.7%	2.2	4.1	210	1.4%	1.0	2.2
(# of Completed Sentences)	(264)				(232)				(191)			
Probation Sentence	1,418	9.2%	40.9	12.3	1,606	10.6%	54.6	14.8	2,083	13.6%	70.5	15.6
(# of Completed Sentences)	(1,067)				(1,031)				(1,193)			
Traffic Sentence	23	0.1%	0.6	11.9	28	0.2%	0.5	7.4	34	0.2%	1.6	18.1
(# of Completed Sentences)	(22)				(22)				(25)			
<b>Subtotal Sentenced<sup>1</sup></b>	<b>2,449</b>	<b>15.9%</b>	<b>126.1</b>	<b>10.1</b>	<b>2,789</b>	<b>18.3%</b>	<b>137.4</b>	<b>12.3</b>	<b>3,374</b>	<b>22.1%</b>	<b>169.3</b>	<b>14.3</b>
<b>Committed</b>												
New Commitments	835	5.4%	40.6	43.6	1,050	6.9%	2.5	27.7	1,011	6.6%	1.9	22.5
Committed Awaiting Placement	782	5.1%	76.5	23.5	417	2.7%	52.0	22.8	152	1.0%	17.3	26.1
Committed Pending Charges	442	2.9%	5.8	17.6	460	3.0%	23.7	19.9	590	3.9%	33.3	20.3
<b>Subtotal Committed</b>	<b>2,059</b>	<b>13.3%</b>	<b>122.9</b>	<b>30.0</b>	<b>1,927</b>	<b>12.7%</b>	<b>78.2</b>	<b>24.8</b>	<b>1,753</b>	<b>11.5%</b>	<b>52.5</b>	<b>22</b>

<sup>1</sup>LOS for Boot Camp sentences is excluded from Sentenced Total LOS.

**DIVISION OF YOUTH CORRECTIONS  
DETENTION POPULATION CHARACTERISTICS BY GENDER  
FY1997-98 through FY1999-00**

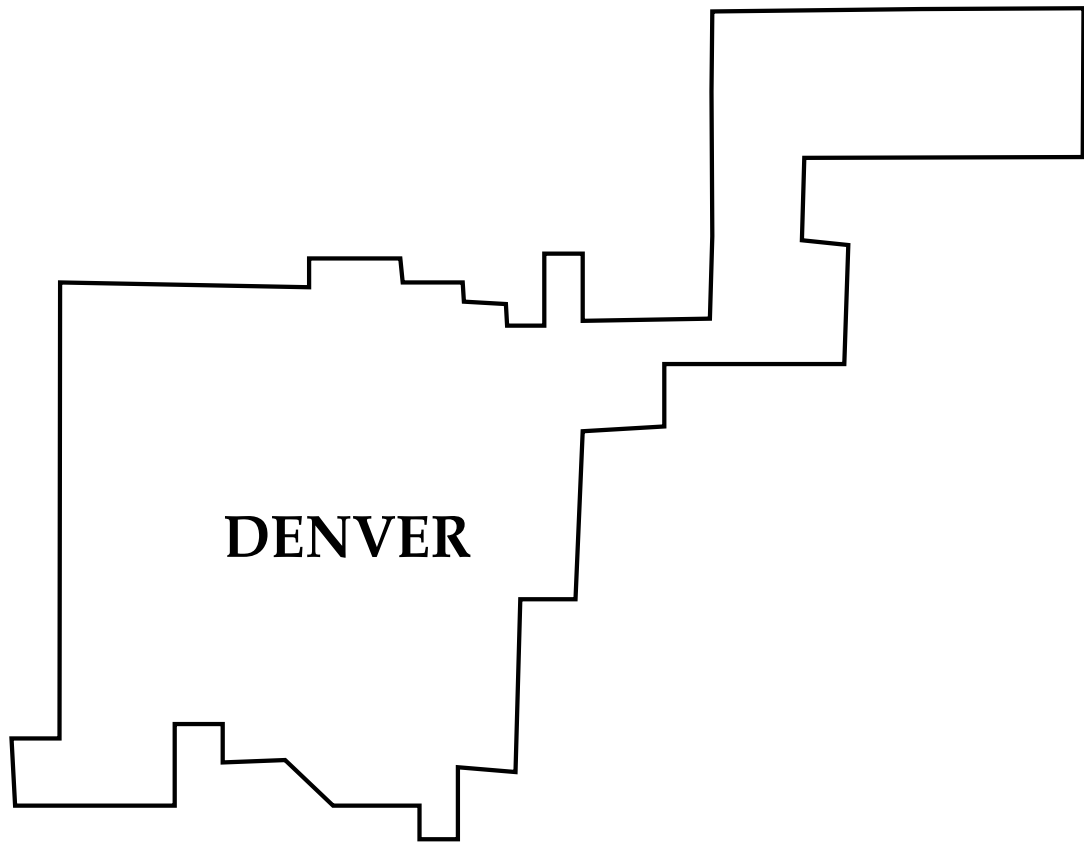
	MALES						FEMALES					
	FY1997-98		FY1998-99		FY1999-00		FY1997-98		FY1998-99		FY1999-99	
	n	%	n	%	n	%	n	%	n	%	n	%
<b>DEMOGRAPHIC DATA<sup>1</sup></b>												
<b>Ethnicity</b>												
Anglo:	5,645	46.9%	5,264	45.2%	5,205	44.5%	1,621	47.9%	1,703	47.9%	1,798	49.8%
African-American:	1,958	16.3%	1,823	15.6%	1,653	14.1%	521	15.4%	474	13.3%	474	13.1%
Hispanic/Latino:	4,090	34.0%	4,194	36.0%	4,464	38.2%	1,168	34.5%	1,246	35.0%	1,248	34.6%
Native American:	95	0.8%	128	1.1%	81	0.7%	36	1.1%	42	1.2%	39	1.1%
Asian-American:	111	0.9%	92	0.8%	123	1.1%	15	0.4%	34	1.0%	10	0.3%
Other:	142	1.2%	156	1.3%	158	1.4%	26	0.8%	56	1.6%	41	1.1%
<b>TOTAL ADMISSIONS</b>	<b>12,041</b>	<b>100.0%</b>	<b>11,657</b>	<b>100.0%</b>	<b>11,684</b>	<b>100.0%</b>	<b>3,387</b>	<b>100.0%</b>	<b>3,555</b>	<b>100.0%</b>	<b>3,610</b>	<b>100.0%</b>
<b>Age</b>												
10 Years	36	0.3%	22	0.2%	26	0.2%	1	0.0%	3	0.1%	2	0.1%
11 Years	69	0.6%	77	0.7%	79	0.7%	10	0.3%	13	0.4%	9	0.2%
12 Years	241	2.0%	243	2.1%	267	2.3%	68	2.0%	88	2.5%	85	2.4%
13 Years	656	5.4%	739	6.3%	824	7.1%	311	9.2%	307	8.6%	313	8.7%
14 Years	1,596	13.3%	1,503	12.9%	1,519	13.0%	588	17.4%	591	16.6%	552	15.3%
15 Years	2,458	20.4%	2,375	20.4%	2,371	20.3%	843	24.9%	924	26.0%	891	24.7%
16 Years	3,150	26.2%	3,021	25.9%	2,923	25.0%	820	24.2%	844	23.7%	956	26.5%
17 Years	3,533	29.3%	3,440	29.5%	3,518	30.1%	724	21.4%	755	21.2%	771	21.4%
18 Years	247	2.1%	184	1.6%	117	1.0%	16	0.5%	26	0.7%	25	0.7%
19 Years	51	0.4%	47	0.4%	32	0.3%	5	0.1%	4	0.1%	3	0.1%
20 Years	4	0.0%	6	0.1%	8	0.1%	1	0.0%	0	0.0%	3	0.1%
<b>Average Age at Admission:</b>	<b>16.1 Yrs.</b>		<b>16.1 Yrs.</b>		<b>16.0 Yrs.</b>		<b>15.8 Yrs.</b>		<b>15.8 Yrs.</b>		<b>15.8 Yrs.</b>	
<b>DETENTION DATA<sup>1</sup></b>												
<b>Number of Prior Admissions</b>												
None:	3,937	32.7%	3,978	34.1%	3,955	33.8%	1,427	42.1%	1,403	39.5%	1,363	37.8%
One:	2,343	19.5%	2,264	19.4%	2,248	19.2%	647	19.1%	721	20.3%	712	19.7%
Two or more:	5,761	47.8%	5,415	46.5%	5,481	46.9%	1,313	38.8%	1,431	40.3%	1,535	42.5%
<b>Charge</b>												
Court Order:	5,344	44.4%	5,570	47.8%	5,828	49.9%	1,607	47.4%	1,809	50.9%	1,903	52.7%
Courtesy:	1,285	10.7%	1,001	8.6%	654	5.6%	119	3.5%	164	4.6%	140	3.9%
Curfew:	0	0.0%	0	0.0%	0	0.0%	0	0.0%	0	0.0%	1	0.0%
Delinquent:	4,151	34.5%	3,759	32.2%	3,935	33.7%	833	24.6%	696	19.6%	753	20.9%
Depend-Neg.:	6	0.0%	14	0.1%	4	0.0%	13	0.4%	7	0.2%	10	0.3%
Drinking under Age:	8	0.1%	6	0.1%	5	0.0%	3	0.1%	0	0.0%	0	0.0%
Game-Fish:	5	0.0%	7	0.1%	4	0.0%	2	0.1%	1	0.0%	3	0.1%
Interrupted:	602	5.0%	590	5.1%	772	6.6%	143	4.2%	168	4.7%	229	6.3%
Park-Municipal:	394	3.3%	500	4.3%	279	2.4%	482	14.2%	515	14.5%	387	10.7%
Runaway:	53	0.4%	65	0.6%	82	0.7%	119	3.5%	128	3.6%	141	3.9%
Traffic:	193	1.6%	145	1.2%	121	1.0%	66	1.9%	67	1.9%	43	1.2%
<b>Reason Held</b>												
Court:	5,265	43.7%	5,812	49.9%	6,086	52.1%	1,857	54.8%	2,144	60.3%	2,104	58.3%
DYC:	1,391	11.6%	1,237	10.6%	861	7.4%	144	4.3%	220	6.2%	174	4.8%
Parole:	151	1.3%	143	1.2%	216	1.8%	31	0.9%	19	0.5%	38	1.1%
Police:	3,831	31.8%	3,018	25.9%	2,984	25.5%	804	23.7%	577	16.2%	689	19.1%
Probation:	1,265	10.5%	1,307	11.2%	1,438	12.3%	402	11.9%	441	12.4%	444	12.3%
Situational:	97	0.8%	71	0.6%	33	0.3%	56	1.7%	54	1.5%	23	0.6%
Social Service:	41	0.3%	69	0.6%	66	0.6%	93	2.7%	100	2.8%	138	3.8%
<b>Legal Status</b>												
<b>Preadjudicated:</b>	<b>8,257</b>	<b>68.6%</b>	<b>7,765</b>	<b>66.6%</b>	<b>7,588</b>	<b>64.9%</b>	<b>2,663</b>	<b>78.6%</b>	<b>2,731</b>	<b>76.8%</b>	<b>2,579</b>	<b>71.4%</b>
<b>Sentenced:</b>												
Boot Camp Sentences:	451	3.7%	445	3.8%	466	4.0%	1	0.0%	0	0.0%	0	0.0%
Contempt Sentences:	78	0.6%	143	1.2%	178	1.5%	89	2.6%	94	2.6%	141	3.9%
Delinquent Sentences:	77	0.6%	148	1.3%	178	1.5%	20	0.6%	46	1.3%	59	1.6%
Game-Fish Sentences:	0	0.0%	1	0.0%	1	0.0%	0	0.0%	0	0.0%	1	0.0%
Handgun Sentences:	18	0.1%	21	0.2%	23	0.2%	0	0.0%	1	0.0%	0	0.0%
Municipal Sentences:	173	1.4%	166	1.4%	142	1.2%	101	3.0%	90	2.5%	68	1.9%
Probation Sentences:	1,128	9.4%	1,278	11.0%	1,604	13.7%	290	8.6%	328	9.2%	479	13.3%
Traffic Sentences:	18	0.1%	21	0.2%	27	0.2%	5	0.1%	7	0.2%	7	0.2%
<b>Subtotal Sentenced:</b>	<b>1,943</b>	<b>16.1%</b>	<b>2,223</b>	<b>19.1%</b>	<b>2,619</b>	<b>22.4%</b>	<b>506</b>	<b>14.9%</b>	<b>566</b>	<b>15.9%</b>	<b>755</b>	<b>20.9%</b>
<b>Committed:</b>												
New Commitment:	719	6.0%	910	7.8%	857	7.3%	116	3.4%	140	3.9%	154	4.3%
Committed awaiting placement	734	6.1%	353	3.0%	108	0.9%	48	1.4%	64	1.8%	44	1.2%
Committed pending charges	388	3.2%	406	3.5%	512	4.4%	54	1.6%	54	1.5%	78	2.2%
<b>Subtotal Committed:</b>	<b>1,841</b>	<b>15.3%</b>	<b>1,669</b>	<b>14.3%</b>	<b>1,477</b>	<b>12.6%</b>	<b>218</b>	<b>6.4%</b>	<b>258</b>	<b>7.3%</b>	<b>276</b>	<b>7.6%</b>
<b>POPULATION DATA</b>												
<b>Average Daily Population</b>												
Preadjudicated:		276.6		308.6		294.8		66.1		78.3		72.6
Sentenced:		113.7		122.7		147.3		12.4		14.6		21.9
Committed:		39.3		22.6		29.7		7.1		3.6		5.6
Committed Awaiting Placement:		67.1		41.2		11.8		9.4		10.9		5.5
<b>TOTAL:</b>		<b>496.7</b>		<b>495.1</b>		<b>483.5</b>		<b>95.1</b>		<b>107.4</b>		<b>105.6</b>
<b>Average Length of Stay (days):</b>		<b>15.1</b>		<b>15.7</b>		<b>15.4</b>		<b>9.7</b>		<b>10.8</b>		<b>10.9</b>

<sup>1</sup>Detention data and demographic data are based on number of admissions. A youth may be admitted more than once during the year.



## SECTION IV

# REGIONAL SUMMARIES



DENVER REGION



**DENVER REGION  
FY 1998-99 AND FY 1999-00  
COMMITTED YOUTH**

POPULATION DATA	FY 1998-99		FY 1999-00		DEMOGRAPHIC DATA <sup>1</sup>	FY 1998-99		FY 1999-00	
	n	%	n	%		n	%	n	%
Number of New Commitments:	190		168		Sex				
Average Daily Population Assessment:	17.3		14.9		Male:	173	91%	135	80%
Secure/Staff Supervised:	182.9		214.1		Female:	17	9%	33	20%
Community Residential:	38.9		49.7		TOTAL	190	100%	168	100%
TOTAL	239.1		278.7		Ethnicity				
Average LOS (months)					Anglo:	27	14%	13	8%
Secure/Staff Supervised:	13.2		13.0		African-American:	73	38%	52	31%
Community Residential:	4.8		3.6		Hispanic/Latino:	82	43%	98	58%
Total Residential:	17.2		16.0		Native-American:	4	2%	2	1%
Total Commitment:	24.9		25.8		Asian-American:	1	1%	0	0%
					Other:	3	2%	3	2%
					TOTAL	190	100%	168	100%
<b>COMMITMENT DATA</b>	<b>n</b>	<b>%</b>	<b>n</b>	<b>%</b>	Age at Commitment:				
Sentence Type <sup>1</sup> :					12 Years	0	0%	0	0%
Non-Mandatory:	87	46%	143	85%	13 Years	5	3%	3	2%
Mandatory:	75	39%	17	10%	14 Years	19	10%	13	8%
Repeat:	27	14%	5	3%	15 Years	32	17%	43	26%
Violent:	1	1%	1	1%	16 Years	62	33%	49	29%
Aggravated Juvenile:	0	0%	2	1%	17 Years	66	35%	51	30%
Adult:	0	0%	0	0%	18 Years	6	3%	9	5%
TOTAL	190	100%	168	100%	19 Years	0	0%	0	0%
					20 Years	0	0%	0	0%
					21 Years	0	0%	0	0%
					TOTAL	190	100%	168	100%
Commitment Type:					Average Age at Commitment:	16.5 Yrs.		16.4 Yrs.	
New Commitments:	190	81%	168	74%					
Concurrent:	37	16%	49	22%					
Consecutive:	7	3%	9	4%					
TOTAL	234	100%	226	100%					
					<b>PAROLE DATA</b>	<b>FY 1998-99</b>	<b>FY 1999-00</b>		
New Commitment Classification:					No. Youth Served on Parole:	152		221	
Intensive:	45	24%	33	20%	Average Daily Population <sup>2</sup> :	55.7		105.6	
Medium:	77	41%	64	38%	Average LOS on Parole (mos.):	7.9		11.6	
Community:	68	36%	71	42%	Average Age at Parole Discharge	18.7 Yrs.		18.8 Yrs.	
TOTAL	190	100%	168	100%	Job/School Status at Time of Parole Discharge <sup>3</sup>	<b>n</b>	<b>%</b>	<b>n</b>	<b>%</b>
					Employed only	21	36%	18	33%
					Enrolled in school only	7	12%	7	13%
					Employed and enrolled in school	11	19%	10	18%
					Unemployed and not in School	19	33%	19	35%
					Unknown	0	0%	1	2%
					TOTAL DISCHARGED	58	100%	55	100%

<sup>1</sup>Data are based on NEW commitments.

<sup>2</sup>Average daily population is the average number of active youth on parole during the time period. Youth on parole who were on escape status during the time period are not included.

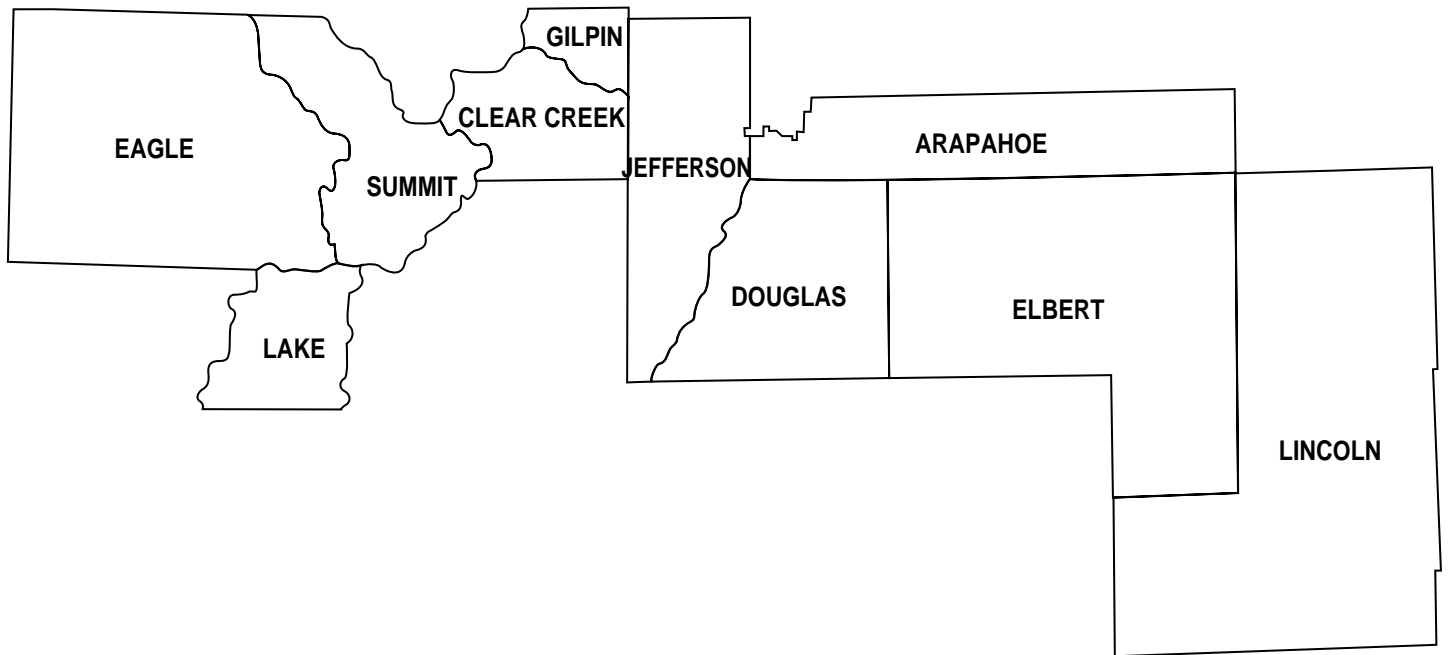
<sup>3</sup>Includes only youth who were on parole at time of discharge. Captures job/School status on day of discharge.

**DENVER REGION  
FY 1998-99 AND FY 1999-00  
DETAINED YOUTH<sup>1</sup>**

	<u>FY 1998-99</u>		<u>FY 1999-00</u>			<u>FY 1998-99</u>		<u>FY 1999-00</u>	
<b>POPULATION DATA</b>					<b>DEMOGRAPHIC DATA</b>				
Number of Intakes:	3,558		3,348			n	%	n	%
Number of Admissions:	3,550		3,339						
Average Daily Population:	119.8		104.8		Sex				
Average LOS (days):	12.63		11.5		Male:	2,605	73%	2,468	74%
					Female:	945	27%	871	26%
<b>DETENTION DATA</b>					<b>TOTAL:</b>				
	n	%	n	%		3,550	100%	3,339	100%
Charge									
Court Order:	1,132	32%	1,135	34%					
Courtesy:	576	16%	353	11%	Ethnicity				
Delinquent:	1,249	35%	1,327	40%	Anglo:	629	18%	496	15%
Depend-Neg.:	5	0%	7	0%	African-American:	1,078	30%	1,008	30%
Drinking Under Age	0	0%	0	0%	Hispanic/Latino:	1,714	48%	1,750	52%
Game-Fish:	0	0%	1	0%	Native-American:	47	1%	37	1%
Interrupted:	38	1%	62	2%	Asian-American:	27	1%	12	0%
Park-Municipal:	394	11%	266	8%	Other:	55	2%	36	1%
Runaway:	148	4%	177	5%					
Traffic:	8	0%	11	0%	<b>TOTAL:</b>	<b>3,550</b>	<b>100%</b>	<b>3,339</b>	<b>100%</b>
<b>TOTAL</b>	<b>3,550</b>	<b>100%</b>	<b>3,339</b>	<b>100%</b>					
Reason Held					Age at Admission				
Court:	1,360	38%	1,259	38%	10 Years	4	0%	4	0%
DYC:	619	17%	418	13%	11 Years	19	1%	16	0%
Parole:	34	1%	67	2%	12 Years	88	2%	77	2%
Police:	1,082	30%	1,136	34%	13 Years	258	7%	300	9%
Probation:	299	8%	299	9%	14 Years	501	14%	461	14%
Situational:	61	2%	26	1%	15 Years	729	21%	716	21%
Social Service:	95	3%	134	4%	16 Years	849	24%	819	25%
					17 Years	1,041	29%	921	28%
<b>TOTAL</b>	<b>3,550</b>	<b>100%</b>	<b>3,339</b>	<b>100%</b>	18 Years	48	1%	19	1%
					19 Years	13	0%	5	0%
Legal Status <sup>2</sup>					20 Years	0	0%	1	0%
<b>Preadjudicated:</b>	<b>2,667</b>	<b>75%</b>	<b>2,444</b>	<b>73%</b>	Over 20 Years	0	0%	0	0%
					<b>TOTAL:</b>	<b>3,550</b>	<b>100%</b>	<b>3,339</b>	<b>100%</b>
<b>Sentenced:</b>									
Boot Camp Sentences:	15	0%	36	1%	Average Age at Admission:	16.0 Yrs.		15.9 Yrs.	
Contempt Sentences:	35	1%	53	2%					
Delinquent Sentences:	0	0%	0	0%					
Game-Fish Sentences:	0	0%	0	0%					
Handgun Sentences:	0	0%	0	0%					
Municipal Sentences:	0	0%	0	0%					
Probation Sentences:	265	7%	335	10%					
Traffic Sentences:	0	0%	0	0%					
<b>Subtotal Sentenced:</b>	<b>315</b>	<b>9%</b>	<b>424</b>	<b>13%</b>					
<b>Committed:</b>									
New Commitments:	355	10%	315	9%					
Committed awaiting placement:	92	3%	10	0%					
Committed pending charges:	121	3%	146	4%					
<b>Subtotal Committed:</b>	<b>568</b>	<b>16%</b>	<b>471</b>	<b>14%</b>					
<b>TOTAL:</b>	<b>3,550</b>	<b>100%</b>	<b>3,339</b>	<b>100%</b>					

<sup>1</sup>Detention data and demographic data are based on number of admissions. A youth may be admitted more than once during the year. Figures include youth from other states/countries admitted to DYC-operated detention centers in this region.

<sup>2</sup>Legal status admission figures have been updated and are slightly different from prior years.



# CENTRAL REGION

**CENTRAL REGION  
FY 1998-99 AND FY1999-00  
COMMITTED YOUTH**

POPULATION DATA	FY 1998-99		FY 1999-00		DEMOGRAPHIC DATA <sup>1</sup>	FY 1998-99		FY 1999-00	
	n	%	n	%		n	%	n	%
Number of New Commitments:	194		172		Sex				
Average Daily Population Assessment:	15.3		15.5		Male:	159	82%	146	85%
Secure/Staff Supervised:	180.9		203.5		Female:	35	18%	26	15%
Community Residential:	58.9		57.7		TOTAL	194	100%	172	100%
TOTAL	255.0		276.7		Ethnicity				
Average LOS (months)					Anglo:	124	64%	109	63%
Secure/Staff Supervised:	12.0		11.8		African-American:	26	13%	23	13%
Community Residential:	6.3		6.0		Hispanic/Latino:	34	18%	31	18%
Total Residential:	16.7		16.7		Native-American:	5	3%	1	1%
Total Commitment:	25.6		26.9		Asian-American:	1	1%	1	1%
					Other:	4	2%	7	4%
					TOTAL	194	100%	172	100%
<b>COMMITMENT DATA</b>	<b>n</b>	<b>%</b>	<b>n</b>	<b>%</b>	Age at Commitment:				
Sentence Type <sup>1</sup>					12 Years	1	1%	1	1%
Non-Mandatory:	103	53%	133	77%	13 Years	7	4%	4	2%
Mandatory:	78	40%	33	19%	14 Years	21	11%	24	14%
Repeat:	8	4%	5	3%	15 Years	38	20%	37	22%
Violent:	4	2%	0	0%	16 Years	50	26%	48	28%
Aggravated Juvenile:	1	1%	1	1%	17 Years	62	32%	53	31%
Adult:	0	0%	0	0%	18 Years	14	7%	5	3%
TOTAL	194	100%	172	100%	19 Years	1	1%	0	0%
					20 Years	0	0%	0	0%
					21 Years	0	0%	0	0%
					TOTAL	194	100%	172	100%
Commitment Type					Average Age at Commitment:	16.4 Yrs.		16.3 Yrs.	
New Commitments:	194	83%	172	75%					
Concurrent:	38	16%	52	23%					
Consecutive:	2	1%	5	2%					
TOTAL	234	100%	229	100%					
					<b>PAROLE DATA</b>	<b>FY 1998-99</b>	<b>FY 1999-00</b>		
New Commitment Classification:					No. Youth Served on Parole:	202		279	
Intensive:	61	31%	43	25%	Average Daily Population <sup>2</sup> :	79.0		132.6	
Medium:	77	40%	71	41%	Average LOS on Parole (mos.):	8.5		10.5	
Community:	56	29%	56	33%	Average Age at Parole Discharge	18.6 Yrs.		18.7 Yrs.	
Unknown	0	0%	2	1%	Job/School Status at				
TOTAL	194	1	172	100%	Time of Parole Discharge <sup>3</sup>	<b>n</b>	<b>%</b>	<b>n</b>	<b>%</b>
					Employed only	33	41%	30	34%
					Enrolled in school only	7	9%	12	13%
					Employed and enrolled in school	29	36%	30	34%
					Unemployed and not in School	11	14%	17	19%
					Unknown	1	1%	0	0%
					TOTAL DISCHARGED	81	100%	89	100%

<sup>1</sup>Data are based on NEW commitments.

<sup>2</sup>Average daily population is the average number of active youth on parole during the time period. Youth on parole who were on escape status during the time period are not included.

<sup>3</sup>Includes only youth who were on parole at time of discharge. Captures job/School status on day of discharge.

**CENTRAL REGION  
POPULATION DATA ON COMMITTED YOUTH  
BY COUNTY OF RESIDENCE**

County	FY 1998-99			FY 1999-00		
	New Commits	ADP	Res. LOS (mos.)	New Commits	ADP	Res. LOS (mos.)
Arapahoe	74	98.6	15.6	57	107.9	17.9
Clear Creek	1	0.4	13.3	1	1.7	0.0
Douglas	10	14.5	18.2	5	13.0	14.7
Eagle	3	3.5	7.1	6	6.3	8.2
Elbert	5	2.8	20.1	4	3.4	10.1
Gilpin	0	0.0	0.0	0	0.0	0.0
Jefferson	96	132.3	17.5	92	139.7	16.9
Lake	1	0.9	21.7	3	0.7	13.3
Lincoln	0	0.0	0.0	0	0.0	0.0
Summit	2	0.6	17.8	2	1.5	0.0
Other States/ Countries	2	1.6	9.6	2	2.5	23.0
<b>TOTALS</b>	<b>194</b>	<b>255.0</b>	<b>16.7</b>	<b>172</b>	<b>276.7</b>	<b>16.7</b>

**CENTRAL REGION  
FY 1998-99 AND FY 1999-00  
DETAINED YOUTH<sup>1</sup>**

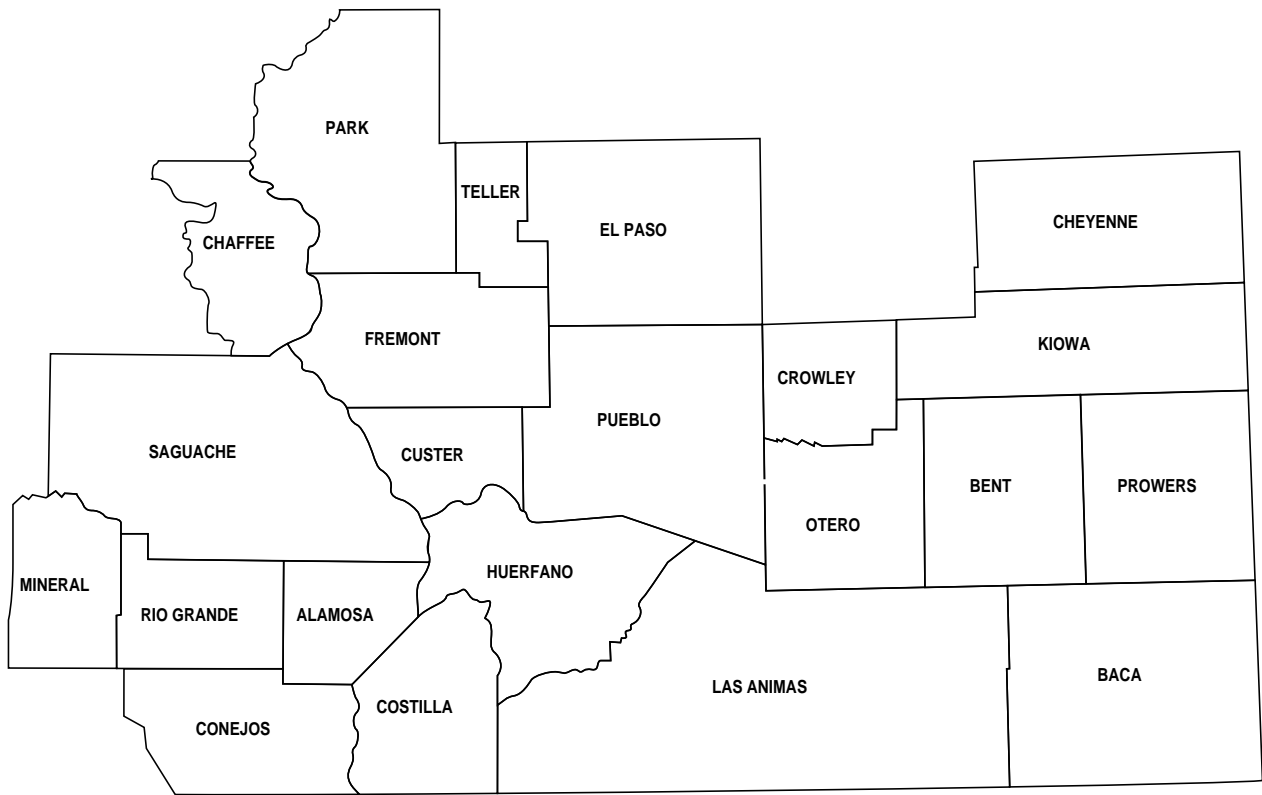
POPULATION DATA	FY 1998-99		FY 1999-00		DEMOGRAPHIC DATA	FY 1998-99		FY 1999-00	
	n	%	n	%		n	%	n	%
Number of Intakes:	3,764		3,683						
Number of Admissions:	3,755		3,667						
Average Daily Population:	150.9		140.8						
Average LOS (days):	14.9		14.7						
<b>DETENTION DATA</b>									
Charge									
Court Order:	1,823	49%	2,034	55%					
Courtesy:	283	8%	113	3%					
Curfew:	0	0%	1	0%					
Delinquent:	1,061	28%	1,095	30%					
Depend-Neg.:	6	0%	1	0%					
Drinking Under Age:	1	0%	0	0%					
Game-Fish:	5	0%	5	0%					
Interrupted:	228	6%	275	7%					
Park-Municipal:	273	7%	84	2%					
Runaway:	4	0%	5	0%					
Traffic:	71	2%	54	1%					
<b>TOTAL</b>	<b>3,755</b>	<b>100%</b>	<b>3,667</b>	<b>100%</b>					
Reason Held									
Court:	1,982	53%	1,980	54%					
DYC:	405	11%	273	7%					
Parole:	44	1%	86	2%					
Police:	873	23%	831	23%					
Probation:	430	11%	488	13%					
Situational:	13	0%	9	0%					
Social Service:	8	0%	0	0%					
<b>TOTAL</b>	<b>3,755</b>	<b>100%</b>	<b>3,667</b>	<b>100%</b>					
Legal Status <sup>2</sup>									
<b>Preadjudicated:</b>	2,384	63%	2,156	59%					
<b>Sentenced:</b>									
Boot Camp Sentences:	81	2%	57	2%					
Contempt Sentences:	185	5%	219	6%					
Delinquent Sentences:	42	1%	44	1%					
Game-Fish Sentences:	1	0%	2	0%					
Handgun Sentences:	7	0%	17	0%					
Municipal Sentences:	96	3%	37	1%					
Probation Sentences:	472	13%	655	18%					
Traffic Sentences:	10	0%	11	0%					
<b>Subtotal Sentenced:</b>	894	24%	1,042	28%					
<b>Committed:</b>									
New Commitments:	244	6%	258	7%					
Committed awaiting placement:	101	3%	17	0%					
Committed pending charges:	132	4%	194	5%					
<b>Subtotal Committed:</b>	477	13%	469	13%					
<b>TOTAL:</b>	<b>3,755</b>	<b>100%</b>	<b>3,667</b>	<b>100%</b>					
					<b>Age at Admission</b>				
					10 Years	2	0%	10	0%
					11 Years	18	0%	21	1%
					12 Years	56	2%	68	2%
					13 Years	240	7%	212	6%
					14 Years	493	13%	486	13%
					15 Years	819	22%	800	22%
					16 Years	1,019	28%	920	25%
					17 Years	1,019	28%	1,061	29%
					18 Years	64	2%	63	2%
					19 Years	23	1%	20	1%
					20 Years	2	0%	5	0%
					Over 20 Years	0	0%	1	0%
					<b>TOTAL:</b>	<b>3,755</b>	<b>102%</b>	<b>3,667</b>	<b>100%</b>
					<b>Average Age at Admission:</b>	<b>16.1 Yrs.</b>		<b>16.1 Yrs.</b>	

<sup>1</sup>Detention data and demographic data are based on number of admissions. A youth may be admitted more than once during the year. Figures include youth from other states/countries admitted to DYC-operated detention centers in this region.

<sup>2</sup>Legal status admission figures have been updated and are slightly different from prior years.

**CENTRAL REGION  
POPULATION DATA ON DETAINED YOUTH  
BY COUNTY**

County of Offense	FY 1998-99			FY 1999-00		
	Admissions	ADP	LOS (Days)	Admissions	ADP	LOS (Days)
Arapahoe	1,564	53.2	12.6	1,618	55.5	13.4
Clear Creek	14	0.8	20.9	13	2.1	37.2
Douglas	216	9.7	16.4	230	9.7	16.4
Eagle	53	2.0	13.9	39	2.4	21.2
Elbert	31	2.0	23.5	31	1.6	16.8
Gilpin	5	0.1	7.0	8	0.5	20.4
Jefferson	1,791	80.2	16.7	1,662	66.4	15.2
Lake	23	0.8	12.9	23	1.0	16.7
Lincoln	5	0.3	15.1	6	0.6	39.2
Summit	31	1.6	19.0	22	0.7	16.2
Other States/ Countries	22	0.3	5.6	15	0.4	12.5
<b>TOTALS</b>	<b>3,755</b>	<b>150.9</b>	<b>14.9</b>	<b>3,667</b>	<b>140.8</b>	<b>14.7</b>



# SOUTHERN REGION



**SOUTHERN REGION  
FY 1998-99 AND FY 1999-00  
COMMITTED YOUTH**

POPULATION DATA	FY 1998-99		FY 1999-00		DEMOGRAPHIC DATA <sup>1</sup>	FY 1998-99		FY 1999-00	
	n	%	n	%		n	%	n	%
Number of New Commitments:	202		200		Sex				
					Male:	176	87%	177	89%
Average Daily Population Assessment:	18.8		22.6		Female:	26	13%	23	12%
Secure/Staff Supervised:	189.9		183.6		TOTAL	202	100%	200	100%
Community Residential:	41.7		44.5		Ethnicity				
TOTAL	250.5		250.7		Anglo:	97	48%	99	50%
Average LOS (months)					African-American:	28	14%	17	9%
Secure/Staff Supervised:	10.6		10.7		Hispanic/Latino:	74	37%	77	39%
Community Residential:	5.0		5.0		Native-American:	2	1%	1	1%
Total Residential:	14.2		14.9		Asian-American:	0	0%	2	1%
Total Commitment:	22.0		27.0		Other:	1	0%	4	2%
					TOTAL	202	100%	200	100%
<b>COMMITMENT DATA</b>	<b>n</b>	<b>%</b>	<b>n</b>	<b>%</b>	Age at Commitment:				
Type of Commitment <sup>1</sup>					12 Years	0	0%	2	1%
Non-Mandatory:	80	40%	142	71%	13 Years	11	6%	8	4%
Mandatory:	93	46%	49	25%	14 Years	21	11%	17	9%
Repeat:	27	13%	7	4%	15 Years	52	26%	49	25%
Violent:	1	0%	0	0%	16 Years	64	32%	51	26%
Aggravated Juvenile:	1	0%	2	1%	17 Years	51	26%	63	32%
Adult:	0	0%	0	0%	18 Years	3	2%	7	4%
TOTAL	202	100%	200	100%	19 Years	0	0%	1	1%
					20 Years	0	0%	2	1%
					21 Years	0	0%	0	0%
					TOTAL	202	101%	200	100%
Breakdown of Sentences					Average Age at Commitment:	16.2 Yrs.		16.3 Yrs.	
New Commitments:	202	81%	200	78%					
Concurrent:	37	15%	51	20%					
Consecutive:	9	4%	6	2%					
TOTAL	248	100%	257	100%					
<b>PAROLE DATA</b>					<b>FY 1998-99</b>	<b>FY 1999-00</b>			
New Commitment					No. Youth Served on Parole:	220		320	
Classification:					Average Daily Population <sup>2</sup> :	91.1		154.4	
Intensive:	36	18%	54	27%	Average LOS on Parole (mos.):	8.6		11.3	
Medium:	111	55%	97	49%	Average Age at Parole Discharge	18.0 Yrs.		18.5 Yrs.	
Community:	54	27%	48	24%	Job/School Status at				
Unknown	1	0%	1	1%	Time of Parole Discharge <sup>3</sup>	<b>n</b>	<b>%</b>	<b>n</b>	<b>%</b>
TOTAL	202	100%	200	100%	Employed only	22	35%	45	43%
					Enrolled in school only	13	21%	16	15%
					Employed and enrolled in school	18	29%	18	17%
					Unemployed and not in School	10	16%	25	24%
					Unknown	0	0%	0	0%
					TOTAL DISCHARGED	63	100%	104	100%

<sup>1</sup>Data are based on NEW commitments.

<sup>2</sup>Average daily population is the average number of active youth on parole during the time period. youth on parole who were on escape status during the time period are not included.

<sup>3</sup>Includes only youth who were on parole at time of discharge. Captures job/School status on day of discharge.

**SOUTHERN REGION  
POPULATION DATA ON COMMITTED YOUTH  
BY COUNTY OF RESIDENCE**

County	FY 1998-99			FY 1999-00		
	New Commits	Res. ADP	Res. LOS (mos.)	New Commits	Res. ADP	Res. LOS (mos.)
Alamosa	4	8.4	11.2	3	6.0	14.5
Baca	0	0.0	0.0	0	0.0	0.0
Bent	2	1.0	11.8	2	2.1	0.0
Chaffee	1	2.2	7.2	4	1.8	7.0
Cheyenne	0	0.0	0.0	0	0.0	0.0
Conejos	2	2.2	13.1	1	1.2	10.2
Costilla	1	0.4	0.0	0	0.4	7.7
Crowley	0	0.8	0.0	1	1.3	0.0
Custer	0	0.5	11.7	1	0.4	0.0
El Paso	107	147.7	17.3	96	145.7	16.6
Fremont	13	13.3	13.0	13	13.4	15.4
Huerfano	4	2.8	7.6	5	5.7	14.8
Kiowa	0	0.0	0.0	0	0.0	0.0
Las Animas	5	7.4	14.6	2	4.0	11.7
Mineral	0	0.0	0.0	0	0.0	0.0
Otero	19	15.1	8.1	16	18.4	15.0
Park	5	3.7	11.7	5	4.5	10.7
Prowers	11	4.5	9.9	8	6.7	9.9
Pueblo	23	27.4	12.2	35	29.2	12.8
Rio Grande	0	0.4	10.1	2	0.8	15.6
Saguache	0	2.8	9.3	1	0.3	8.2
Teller	4	6.6	4.2	5	7.7	19.9
Other States/ Countries	1	3.6	6.6	0	1.1	14.3
<b>TOTALS</b>	<b>202</b>	<b>250.5</b>	<b>14.2</b>	<b>200</b>	<b>250.7</b>	<b>14.9</b>

**SOUTHERN REGION  
FY 1998-99 AND FY 1999-00  
DETAINED YOUTH<sup>1</sup>**

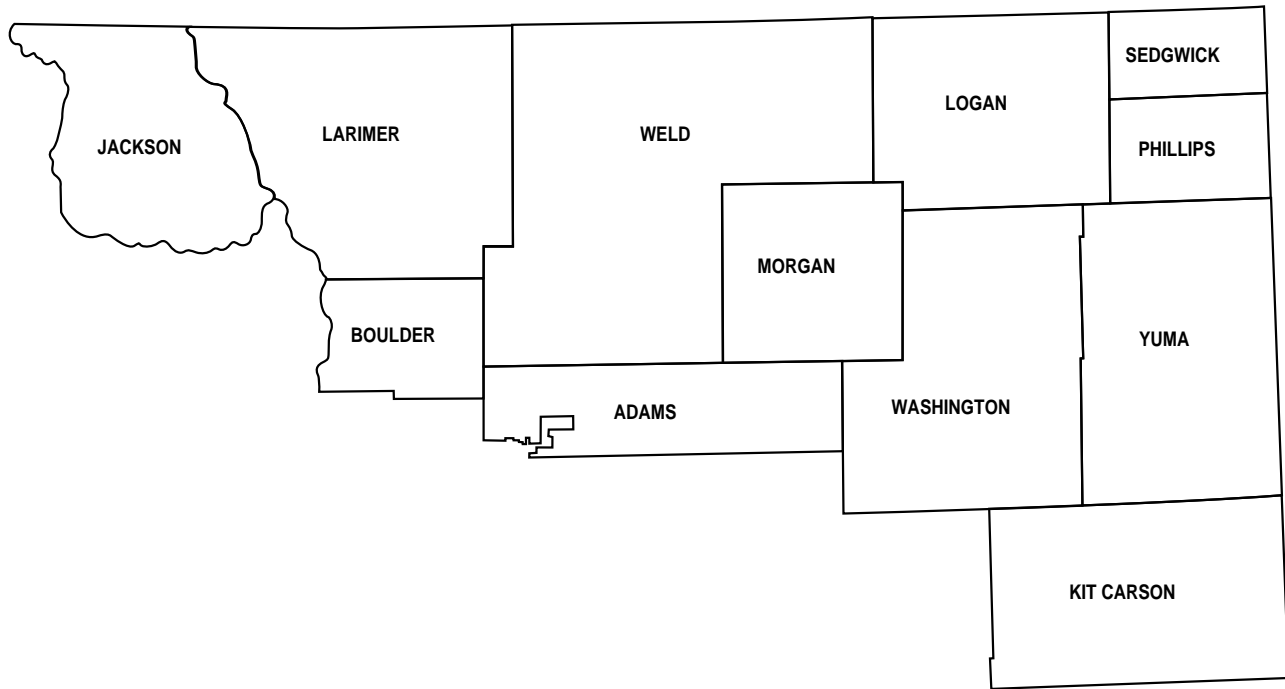
<b>POPULATION DATA</b>	<u>FY 1998-99</u>		<u>FY 1999-00</u>						
					<b>DEMOGRAPHIC DATA</b>				
					<u>FY 1998-99</u>		<u>FY 1999-00</u>		
					n	%	n	%	
Number of Intakes:		3,905		4,117					
Number of Admissions:		3,894		4,108					
Average Daily Population:		163.0		174.9					
Average LOS (days):		15.1		15.6					
					<b>Sex</b>				
					Male:	2,990	77%	3,173	77%
					Female:	904	23%	935	23%
					<b>TOTAL:</b>				
					3,894	100%	4,108	100%	
					<b>Ethnicity</b>				
					Anglo:	1,755	45%	1,863	45%
					African-American:	524	13%	477	12%
					Hispanic/Latino:	1,505	39%	1,673	41%
					Native-American:	36	1%	15	0%
					Asian-American:	15	0%	15	0%
					Other:	59	2%	65	2%
					<b>TOTAL:</b>				
					3,894	100%	4,108	100%	
					<b>Age at Admission</b>				
					10 Years	15	0%	7	0%
					11 Years	25	1%	35	1%
					12 Years	80	2%	115	3%
					13 Years	261	7%	283	7%
					14 Years	542	14%	519	13%
					15 Years	919	24%	875	21%
					16 Years	961	25%	1,066	26%
					17 Years	1,036	27%	1,153	28%
					18 Years	49	1%	43	1%
					19 Years	6	0%	9	0%
					20 Years	0	0%	3	0%
					Over 20 Years	0	0%	0	0%
					<b>TOTAL:</b>				
					3,894	100%	4,108	100%	
					<b>Average Age at Admission:</b>				
					16.0 Yrs.		16.0 Yrs.		
<b>Reason Held</b>									
Court:	1,969	51%	2,074	50%					
DYC:	301	8%	282	7%					
Parole:	35	1%	67	2%					
Police:	937	24%	1,004	24%					
Probation:	605	16%	634	15%					
Situational:	12	0%	7	0%					
Social Service:	35	1%	40	1%					
<b>TOTAL</b>	<b>3,894</b>	<b>100%</b>	<b>4,108</b>	<b>100%</b>					
<b>Legal Status<sup>2</sup></b>									
<b>Preadjudicated:</b>	2,515	65%	2,517	61%					
<b>Sentenced:</b>									
Boot Camp Sentences:	199	5%	209	5%					
Contempt Sentences:	12	0%	39	1%					
Delinquent Sentences:	110	3%	164	4%					
Game-Fish Sentences:	0	0%	0	0%					
Handgun Sentences:	6	0%	1	0%					
Municipal Sentences:	118	3%	144	4%					
Probation Sentences:	406	10%	493	12%					
Traffic Sentences:	9	0%	4	0%					
<b>Subtotal Senteced:</b>	<b>860</b>	<b>22%</b>	<b>1,054</b>	<b>26%</b>					
<b>Committed:</b>									
New Commitments:	269	7%	262	6%					
Committed awaiting placement:	136	3%	110	3%					
Committed pending charges:	114	3%	165	4%					
<b>Subtotal Committed:</b>	<b>519</b>	<b>13%</b>	<b>537</b>	<b>13%</b>					
<b>TOTAL:</b>	<b>3,894</b>	<b>100%</b>	<b>4,108</b>	<b>100%</b>					

<sup>1</sup>Detention data and demographic data are based on number of admissions. A youth may be admitted more than once during the year. Figures include youth from other states/countries admitted to DYC-operated detention centers in this region.

<sup>2</sup>Legal status admission figures have been updated and are slightly different from prior years.

**SOUTHERN REGION  
POPULATION DATA ON DETAINED YOUTH  
BY COUNTY**

County of Offense	FY 1998-99			FY 1999-00		
	Admissions	ADP	LOS (Days)	Admissions	ADP	LOS (Days)
Alamosa	118	7.6	15.2	89	5.0	20.7
Baca	3	0.6	68.2	2	0.2	44.1
Bent	8	0.5	22.7	10	0.8	28.1
Chaffee	38	1.1	10.8	47	1.0	8.2
Cheyenne	2	0.2	28.5	0	0.0	0.0
Conejos	32	3.0	10.8	36	0.8	9.7
Costilla	19	0.6	10.2	13	0.4	15.4
Crowley	8	0.3	14.7	13	0.5	14.8
Custer	4	0.1	12.0	4	0.0	3.5
El Paso	2,054	80.1	14.3	2,061	88.3	15.5
Fremont	194	7.6	14.2	247	8.2	12.6
Huerfano	63	3.4	18.8	30	1.8	21.7
Kiowa	1	0.0	4.9	0	0.0	0.0
Las Animas	47	2.8	22.7	46	2.6	22.9
Mineral	0	0.0	0.0	0	0.0	0.0
Otero	139	8.3	21.4	128	6.0	18.8
Park	26	1.3	19.8	47	1.6	12.9
Prowers	57	6.0	44.0	40	2.8	28.8
Pueblo	964	33.6	13.1	1,074	49.0	16.7
Rio Grande	33	1.9	26.4	39	1.3	11.1
Saguache	12	0.5	16.9	7	0.2	10.8
Teller	60	2.7	15.6	47	2.5	19.5
Other States/ Countries	12	0.8	37.2	128	1.6	4.8
<b>TOTALS</b>	<b>3,894</b>	<b>163.0</b>	<b>15.1</b>	<b>4,108</b>	<b>174.9</b>	<b>15.6</b>



# NORTHEAST REGION

**NORTHEAST REGION  
FY 1998-99 AND FY 1999-00  
COMMITTED YOUTH**

POPULATION DATA	FY 1998-99		FY 1999-00		DEMOGRAPHIC DATA <sup>1</sup>	FY 1998-99		FY 1999-00	
	n	%	n	%		n	%	n	%
Number of New Commitments:	185		208		Sex				
					Male:	173	94%	187	90%
Average Daily Population Assessment:	14.8		17.0		Female:	12	6%	21	10%
Secure/Staff Supervised:	191.1		202.4		TOTAL	185	100%	208	100%
Community Residential:	33.1		40.2						
TOTAL	239.1		259.6		Ethnicity				
Average LOS (months)					Anglo:	87	47%	102	49%
Secure/Staff Supervised:	12.4		12.7		African-American:	16	9%	11	5%
Community Residential:	4.4		4.8		Hispanic/Latino:	79	43%	91	44%
Total Residential:	15.5		16.2		Native-American:	0	0%	1	0%
Total Commitment:	23.0		25.8		Asian-American:	2	1%	2	1%
					Other:	1	1%	1	0%
					TOTAL	185	100%	208	100%
<b>COMMITMENT DATA</b>	<b>n</b>	<b>%</b>	<b>n</b>	<b>%</b>	Age at Commitment:				
Type of Commitment <sup>1</sup>					12 Years	1	1%	1	0%
Non-Mandatory:	88	48%	123	59%	13 Years	8	4%	10	5%
Mandatory:	73	39%	56	27%	14 Years	16	9%	21	10%
Repeat:	10	5%	13	6%	15 Years	39	21%	38	18%
Violent:	5	3%	2	1%	16 Years	47	25%	60	29%
Aggravated Juvenile:	9	5%	14	7%	17 Years	64	35%	65	31%
Adult:	0	0%	0	0%	18 Years	7	4%	12	6%
TOTAL	185	100%	208	100%	19 Years	2	1%	1	0%
					20 Years	1	1%	0	0%
Breakdown of Sentences					21 Years	0	0%	0	0%
New Commitments:	185	82%	208	78%	TOTAL	185	100%	208	100%
Concurrent:	38	17%	53	20%	Average Age at Commitment:	16.5 Yrs.		16.4 Yrs.	
Consecutive:	2	1%	7	3%					
TOTAL	225	100%	268	100%	<b>PAROLE DATA</b>	<b>FY 1998-99</b>	<b>FY 1999-00</b>		
New Commitment					No. Youth Served on Parole:	181		236	
Classification:					Average Daily Population <sup>2</sup> :	70.5		115.7	
Intensive:	52	28%	62	30%	Average LOS on Parole (mos.):	7.38		10.1	
Medium:	94	51%	97	47%	Average Age at Parole Discharge	18.6 Yrs.		18.6 Yrs	
Community:	37	20%	48	23%	Job/School Status at				
Unknown	2	1%	1	0%	Time of Parole Discharge <sup>3</sup>	<b>n</b>	<b>%</b>	<b>n</b>	<b>%</b>
TOTAL	185	100%	208	100%	Employed only	28	40%	32	41%
					Enrolled in school only	12	17%	12	15%
					Employed and enrolled in school	17	24%	16	20%
					Unemployed and not in School	13	19%	19	24%
					Unknown	0	0%	0	0%
					TOTAL DISCHARGED	70	100%	79	100%

<sup>1</sup>Data are based on NEW commitments.

<sup>2</sup>Average daily population is the average number of active youth on parole during the time period. Youth on parole who were on escape status during the time period are not included.

<sup>3</sup>Includes only youth who were on parole at time of discharge. Captures job/School status on day of discharge.

**NORTHEAST REGION  
POPULATION DATA ON COMMITTED YOUTH  
BY COUNTY OF RESIDENCE**

County	FY 1998-99			FY 1999-00		
	<u>New Commits</u>	<u>Res. ADP</u>	<u>Res. LOS (mos.)</u>	<u>New Commits</u>	<u>Res. ADP</u>	<u>Res. LOS (mos.)</u>
Adams	72	86.4	16.1	66	97.5	16.6
Boulder	16	37.5	16.1	19	29.0	17.5
Jackson	1	1.0	0.0	1	1.5	24.0
Kit Carson	0	0.0	0.0	0	0.0	0.0
Larimer	34	48.6	15.0	49	60.4	16.2
Logan	0	1.1	10.4	3	1.1	11.4
Morgan	5	7.6	16.3	5	4.9	16.8
Phillips	0	0.0	12.0	0	0.0	0.0
Sedgwick	0	0.0	0.0	0	0.0	0.0
Washington	0	0.0	10.1	1	0.4	0.0
Weld	53	54.4	16.0	63	63.5	14.9
Yuma	3	1.6	5.1	0	0.2	8.3
Other States/ Countries	1	1.0	0.0	1	1.1	0.0
<b>TOTALS</b>	<b>185</b>	<b>239.1</b>	<b>15.5</b>	<b>208</b>	<b>259.6</b>	<b>16.2</b>

**NORTHEAST REGION  
FY 1998-99 AND FY 1999-00  
DETAINED YOUTH<sup>1</sup>**

POPULATION DATA	FY 1998-99		FY 1999-00		DEMOGRAPHIC DATA	FY 1998-99		FY 1999-00	
	n	%	n	%		n	%	n	%
Number of Intakes:	3,060		3,229						
Number of Admissions:	3,046		3,197		Sex				
Average Daily Population:	116.5		118.5		Male:	2,411	79%	2,559	80%
Average LOS (days):	14.2		14.0		Female:	635	21%	638	20%
<b>DETENTION DATA</b>	<b>n</b>	<b>%</b>	<b>n</b>	<b>%</b>	<b>TOTAL:</b>	<b>3,046</b>	<b>100%</b>	<b>3,197</b>	<b>100%</b>
Charge					Ethnicity				
Court Order:	1,885	62%	2,056	64%	Anglo:	1,578	52%	1,624	51%
Courtesy:	112	4%	36	1%	African-American:	160	5%	159	5%
Delinquent:	628	21%	615	19%	Hispanic/Latino:	1,237	41%	1,321	41%
Depend-Neg.:	4	0%	5	0%	Native-American:	23	1%	17	1%
Drinking Under Age:	0	0%	0	0%	Asian-American:	26	1%	59	2%
Game-Fish:	1	0%	1	0%	Other:	22	1%	17	1%
Interrupted:	269	9%	385	12%	<b>TOTAL:</b>	<b>3,046</b>	<b>100%</b>	<b>3,197</b>	<b>100%</b>
Park-Municipal:	87	3%	45	1%					
Runaway:	29	1%	28	1%					
Traffic:	31	1%	26	1%					
<b>TOTAL</b>	<b>3,046</b>	<b>100%</b>	<b>3,197</b>	<b>100%</b>	Age at Admission				
Reason Held					10 Years	1	0%	2	0%
Court:	2,111	69%	2,283	71%	11 Years	24	1%	10	0%
DYC:	122	4%	49	2%	12 Years	92	3%	73	2%
Parole:	39	1%	27	1%	13 Years	233	8%	288	9%
Police:	466	15%	470	15%	14 Years	449	15%	463	14%
Probation:	250	8%	327	10%	15 Years	637	21%	665	21%
Situational:	29	1%	11	0%	16 Years	759	25%	825	26%
Social Service:	29	1%	30	1%	17 Years	792	26%	859	27%
<b>TOTAL</b>	<b>3,046</b>	<b>100%</b>	<b>3,197</b>	<b>100%</b>	18 Years	46	2%	10	0%
Legal Status <sup>2</sup>					19 Years	9	0%	1	0%
<b>Preadjudicated:</b>	<b>2,239</b>	<b>74%</b>	<b>2,374</b>	<b>74%</b>	20 Years	4	0%	1	0%
<b>Sentenced:</b>					Over 20 Years	0	0%	0	0%
Boot Camp Sentences:	82	3%	104	3%	<b>TOTAL:</b>	<b>3,046</b>	<b>100%</b>	<b>3,197</b>	<b>100%</b>
Contempt Sentences:	4	0%	8	0%	Average Age at Admission:	15.9 Yrs.		15.9 Yrs.	
Delinquent Sentences:	41	1%	21	1%					
Game-Fish Sentences:	0	0%	0	0%					
Handgun Sentences:	8	0%	3	0%					
Municipal Sentences:	41	1%	27	1%					
Probation Sentences:	337	11%	435	14%					
Traffic Sentences:	5	0%	7	0%					
<b>Subtotal Sentenced:</b>	<b>518</b>	<b>17%</b>	<b>605</b>	<b>19%</b>					
<b>Committed:</b>									
New Commitments:	133	4%	144	5%					
Committed pending placement:	73	2%	10	0%					
Committed pending charges:	83	3%	64	2%					
<b>Subtotal Committed:</b>	<b>289</b>	<b>9%</b>	<b>218</b>	<b>7%</b>					
<b>TOTAL:</b>	<b>3,046</b>	<b>100%</b>	<b>3,197</b>	<b>100%</b>					

<sup>1</sup>Detention data and demographic data are based on number of admissions. A youth may be admitted more than once during the year. Figures include youth from other states/countries admitted to DYC-operated detention centers in this region.

<sup>2</sup>Legal status admission figures have been updated and are slightly different from prior years.



**NORTHEAST REGION  
POPULATION DATA ON DETAINED YOUTH  
BY COUNTY**

County of Offense	FY 1998-99			FY 1999-00		
	Admisssions	ADP	LOS (Days)	Admisssions	ADP	LOS (Days)
Adams	809	38.1	17.2	739	30.9	16.8
Boulder	872	22.7	9.7	916	25.6	10.3
Jackson	4	0.1	3.8	3	0.2	22.9
Kit Carson	8	1.0	46.1	4	0.2	16.3
Larimer	539	20.8	14.5	574	22.0	14.0
Logan	56	3.4	21.9	73	5.2	25.5
Morgan	59	5.5	30.5	105	6.5	24.8
Phillips	2	0.0	3.0	0	0.0	0.0
Sedgwick	0	0.0	0.0	0	0.0	0.0
Washington	2	0.5	164.9	7	0.3	18.4
Weld	677	23.9	13.4	757	26.8	12.9
Yuma	6	0.2	15.0	12	0.6	19.0
Other States/Coun	12	0.4	12.2	7	0.1	4.8
<b>TOTALS</b>	<b>3,046</b>	<b>116.5</b>	<b>14.2</b>	<b>3,197</b>	<b>118.5</b>	<b>14.0</b>



# WESTERN REGION

**WESTERN REGION  
FY 1998-99 AND FY 1999-00  
COMMITTED YOUTH**

POPULATION DATA	FY 1998-99		FY 1999-00		DEMOGRAPHIC DATA <sup>1</sup>	FY 1998-99		FY 1999-00	
	n	%	n	%		n	%	n	%
Number of New Commitments:	107		100		Sex				
					Male:	88	82%	93	93%
ADP					Female:	19	18%	7	7%
Assessment:	8.3		8.1		TOTAL	107	100%	100	100%
Secure/Staff Supervised:	89.7		96.5		Ethnicity				
Community Residential:	30.1		27.9		Anglo:	75	70%	66	66%
TOTAL	128.2		132.6		African-American:	1	1%	1	1%
Average LOS (mos.)					Hispanic/Latino:	28	26%	29	29%
Secure/Staff Supervised:	9.5		8.7		Native-American:	3	3%	1	1%
Community Residential:	5.5		5.4		Asian-American:	0	0%	1	1%
Total Residential:	13.6		13.5		Other:	0	0%	2	2%
Total Commitment:	22.0		22.8		TOTAL	107	100%	100	100%
					Age at Commitment:				
COMMITMENT DATA	n	%	n	%	12 Years	1	1%	1	1%
Type of Commitment <sup>1</sup>					13 Years	6	6%	7	7%
Non-Mandatory:	78	73%	84	84%	14 Years	7	7%	13	13%
Mandatory:	17	16%	4	4%	15 Years	13	12%	17	17%
Repeat:	12	11%	9	9%	16 Years	43	40%	27	27%
Violent:	0	0%	1	1%	17 Years	35	33%	31	31%
Aggravated Juvenile:	0	0%	2	2%	18 Years	2	2%	4	4%
Adult:	0	0%	0	0%	19 Years	0	0%	0	0%
TOTAL	107	100%	100	100%	20 Years	0	0%	0	0%
					21 Years	0	0%	0	0%
					TOTAL	107	100%	100	100%
Breakdown of Sentences					Average Age at Commitment <sup>2</sup> :	16.4 Yrs.		16.2 Yrs.	
New Commitments:	107	85%	100	81%					
Concurrent:	11	9%	12	10%					
Consecutive:	8	6%	11	9%					
TOTAL	126	100%	123	100%					
					PAROLE DATA	FY 1998-99	FY 1999-00		
New Commitment					No. Youth Served on Parole:	157	187		
Classification:					Average Daily Population <sup>2</sup> :	69.9	93.5		
Intensive:	16	15%	26	26%	Average LOS on Parole (mos.):	8.9	11.4		
Medium:	41	38%	40	40%	Average Age at Parole Discharge	18.0 Yrs.	18.8 Yrs.		
Community:	50	47%	33	33%	Job/School Status at				
Unknown		0%	1	1%	Time of Parole Discharge <sup>3</sup>	n	%	n	%
TOTAL	107	100%	100	100%	Employed only	21	38%	45	50%
					Enrolled in school only	11	20%	9	10%
					Employed and enrolled in school	13	24%	9	10%
					Unemployed and not in School	10	18%	26	29%
					Unknown	0	0%	1	1%
					TOTAL DISCHARGED	55	100%	90	100%

<sup>1</sup>Data are based on NEW commitments.

<sup>2</sup>Average daily population is the average number of active youth on parole during the time period. Youth on parole who were on escape status during the time period are not included.

<sup>3</sup>Includes only youth who were on parole at time of discharge. Captures job/school status on day of discharge.

**WESTERN REGION  
POPULATION DATA ON COMMITTED YOUTH  
BY COUNTY OF RESIDENCE**

County	FY 1998-99			FY 1999-00		
	New Commits	Res. ADP	Res. LOS (mos.)	New Commits	Res. ADP	Res. LOS (mos.)
Archuleta	3	2.5	2.9	0	1.7	19.8
Delta	8	7.9	16.4	6	8.6	15.5
Dolores	0	0.7	20.5	1	1.0	10.0
Garfield	12	19.7	13.4	13	19.1	12.3
Grand	3	1.4	0.0	1	2.6	0.0
Gunnison	1	1.4	0.0	0	0.5	11.9
Hinsdale	0	0.0	0.0	0	0.0	0.0
La Plata	16	12.9	7.6	7	13.9	10.8
Mesa	38	56.9	14.6	39	50.8	14.7
Moffat	4	3.3	0.0	2	4.4	12.8
Montezuma	3	4.6	23.0	6	5.6	14.6
Montrose	9	9.9	12.9	18	14.9	11.6
Ouray	0	1.7	19.1	0	1.1	0.0
Pitkin	1	0.7	0.0	2	2.4	0.0
Rio Blanco	0	0.0	0.0	0	0.0	0.0
Routt	4	1.7	0.0	0	2.1	11.4
San Juan	0	0.0	0.0	0	0.0	0.0
San Miguel	3	1.8	11.6	0	2.4	10.6
Other States/ Countries	2	1.3	6.7	5	1.6	6.7
<b>TOTALS</b>	<b>107</b>	<b>128.2</b>	<b>13.6</b>	<b>100</b>	<b>132.6</b>	<b>13.5</b>

**WESTERN REGION  
FY 1998-99 AND FY 1999-00  
DETAINED YOUTH<sup>1</sup>**

POPULATION DATA	FY 1998-99		FY 1999-00		DEMOGRAPHIC DATA	FY 1998-99		FY 1999-00	
	n	%	n	%		n	%	n	%
Number of Intakes:	969		990						
Number of Admissions:	967		983						
Average Daily Population:	52.2		50.1		Sex				
Average LOS (days):	19.5		18.1		Male:	783	81%	788	80%
					Female:	184	19%	195	20%
<b>DETENTION DATA</b>	<b>n</b>	<b>%</b>	<b>n</b>	<b>%</b>	<b>TOTAL:</b>	<b>967</b>	<b>100%</b>	<b>983</b>	<b>100%</b>
Charge									
Court Order:	614	63%	549	56%	Ethnicity				
Courtesy:	18	2%	17	2%	Anglo:	705	73%	716	73%
Delinquent:	315	33%	375	38%	African-American:	17	2%	19	2%
Depend-Neg.:	1	0%	0	0%	Hispanic/Latino:	203	21%	208	21%
Drinking Under Age:	0	0%	1	0%	Native-American:	31	3%	22	2%
Game-Fish:	0	0%	0	0%	Asian-American:	7	1%	9	1%
Interrupted:	12	1%	23	2%	Other:	4	0%	9	1%
Park-Municipal:	1	0%	1	0%	<b>TOTAL:</b>	<b>967</b>	<b>100%</b>	<b>983</b>	<b>100%</b>
Runaway:	0	0%	3	0%					
Traffic:	6	1%	14	1%	Age at Admission				
<b>TOTAL</b>	<b>967</b>	<b>100%</b>	<b>983</b>	<b>100%</b>	10 Years	3	0%	5	1%
Reason Held					11 Years	4	0%	6	1%
Court:	534	55%	594	60%	12 Years	15	2%	19	2%
DYC:	10	1%	13	1%	13 Years	54	6%	54	5%
Parole:	10	1%	7	1%	14 Years	109	11%	142	14%
Police:	237	25%	232	24%	15 Years	195	20%	206	21%
Probation:	164	17%	134	14%	16 Years	277	29%	249	25%
Situational:	10	1%	3	0%	17 Years	307	32%	295	30%
Social Service:	2	0%	0	0%	18 Years	3	0%	7	1%
<b>TOTAL</b>	<b>967</b>	<b>100%</b>	<b>983</b>	<b>100%</b>	19 Years	0	0%	0	0%
Legal Status <sup>2</sup>					20 Years	0	0%	0	0%
<b>Preadjudicated:</b>	<b>691</b>	<b>71%</b>	<b>676</b>	<b>69%</b>	Over 20 Years	0	0%	0	0%
<b>Sentenced:</b>					<b>TOTAL:</b>	<b>967</b>	<b>100%</b>	<b>983</b>	<b>100%</b>
Boot Camp Sentences:	68	7%	60	6%	Average Age at Admission:	16.2 Yrs.		16.1 Yrs.	
Contempt Sentences:	1	0%	0	0%					
Delinquent Sentences:	1	0%	8	1%					
Game-Fish Sentences:	0	0%	0	0%					
Handgun Sentences:	1	0%	2	0%					
Municipal Sentences:	1	0%	2	0%					
Probation Sentences:	126	13%	165	17%					
Traffic Sentences:	4	0%	12	1%					
<b>Subtotal Sentenced:</b>	<b>202</b>	<b>21%</b>	<b>249</b>	<b>25%</b>					
<b>Committed:</b>									
New Commitments:	49	5%	32	3%					
Committed pending placement:	15	2%	5	1%					
Committed pending charges:	10	1%	21	2%					
<b>Subtotal Committed:</b>	<b>74</b>	<b>8%</b>	<b>58</b>	<b>6%</b>					
<b>TOTAL:</b>	<b>967</b>	<b>100%</b>	<b>983</b>	<b>100%</b>					

<sup>1</sup>Detention data and demographic data are based on number of admissions. A youth may be admitted more than once during the year. Figures include youth from other states/countries admitted to DYC-operated detention centers in this region.

<sup>2</sup>Legal status admission figures have been updated and are slightly different from prior years.

**WESTERN REGION  
POPULATION DATA ON DETAINED YOUTH  
BY COUNTY**

County of Offense	FY 1998-99			FY 1999-00		
	Admissions	ADP	LOS (Days)	Admissions	ADP	LOS (Days)
Archuleta	13	0.9	25.4	12	0.8	16.9
Delta	24	1.2	17.5	30	1.4	19.9
Dolores	3	0.4	43.0	0	0.0	0.0
Garfield	112	6.3	19.3	121	5.8	17.7
Grand	25	2.1	30.2	22	1.3	21.9
Gunnison	5	0.3	23.4	12	0.5	12.9
Hinsdale	1	0.0	1.2	2	0.1	17.9
La Plata	103	6.3	21.1	95	7.3	25.3
Mesa	470	21.9	17.1	453	21.0	16.6
Moffat	32	1.8	20.3	50	2.2	16.6
Montezuma	33	2.4	24.8	34	1.7	17.0
Montrose	50	3.2	24.4	52	4.0	27.3
Ouray	2	0.1	10.3	0	0.0	0.0
Pitkin	20	1.2	24.3	30	1.7	19.9
Rio Blanco	25	1.6	22.8	29	0.6	8.7
Routt	33	1.7	20.5	25	1.3	17.0
San Juan	0	0.0	0.0	0	0.0	0.0
San Miguel	7	0.6	31.7	4	0.1	12.9
Other States/ Countries	9	0.3	10.9	12	0.3	7.8
<b>TOTALS</b>	<b>967</b>	<b>52.2</b>	<b>19.5</b>	<b>983</b>	<b>50.1</b>	<b>18.1</b>