

Fiscal Year 1998-1999

**Management Reference
Manual**



Colorado Division of Youth Corrections

Establishing the Standard of Excellence in the Juvenile Justice System

December 1999

**This manual provides the information most often requested on DYC client populations. Any questions concerning the data presented in this manual may be directed to Josh Meisel, Research and Evaluation, Division of Youth Corrections, 4255 S. Knox Court, Denver, Colorado, 80236.
TEL: 303-866-7968 EMAIL: josh.meisel@state.co.us**

Division of Youth Corrections artwork designed by students of the Lookout Mountain Youth Services Center silkscreening vocational program.

**The Division of Youth Corrections can be visited on the World Wide Web at:
<http://www.cdhs.state.co.us/dyc/Home.htm>**

STATE OF COLORADO

COLORADO DEPARTMENT OF HUMAN SERVICES

DIVISION OF YOUTH CORRECTIONS

4255 South Knox Court
Denver, Colorado 80236
Phone (303) 866-7345
FAX (303) 866-7344



Betty K. Marler
Director

Bill Owens
Governor

Marva Livingston Hammons
Executive Director

TO THE READER

The Division of Youth Corrections Management Reference Manual contains population information for fiscal year 1998-99. The Division continues to experience numerous changes due to population growth in both detention and commitment as well as the changing needs of the population served.

During the 1998-99 fiscal year, the Division of Youth Corrections modified the use of some of the state owned facilities to address the needs of the population. The following facility changes occurred:

1. The Mount View Youth Services Center began to provide commitment services.
2. The Marvin Foote Youth Services Center began to provide assessment and commitment services.
3. Zebulon Pike Youth Services Center was converted from a detention facility to a commitment facility.
4. Spring Creek Youth Services Center began to provide assessment services.
5. Lathrop Park Youth Camp was reopened as a privately operated facility.

Construction is well underway on the Ridge View Youth Services Center, a 500 bed academic model program, and is targeted to open in the spring of 2001. The Robert De Nier Youth Services Center, a multipurpose facility for detained and committed youth in Durango, will open in January 2000.

The Division is also in the process of reclassifying commitment programs to more accurately represent the supervision and security levels provided. "Secure" and "staff secure" have replaced "intensive secure" and "medium secure" as facility classifications.

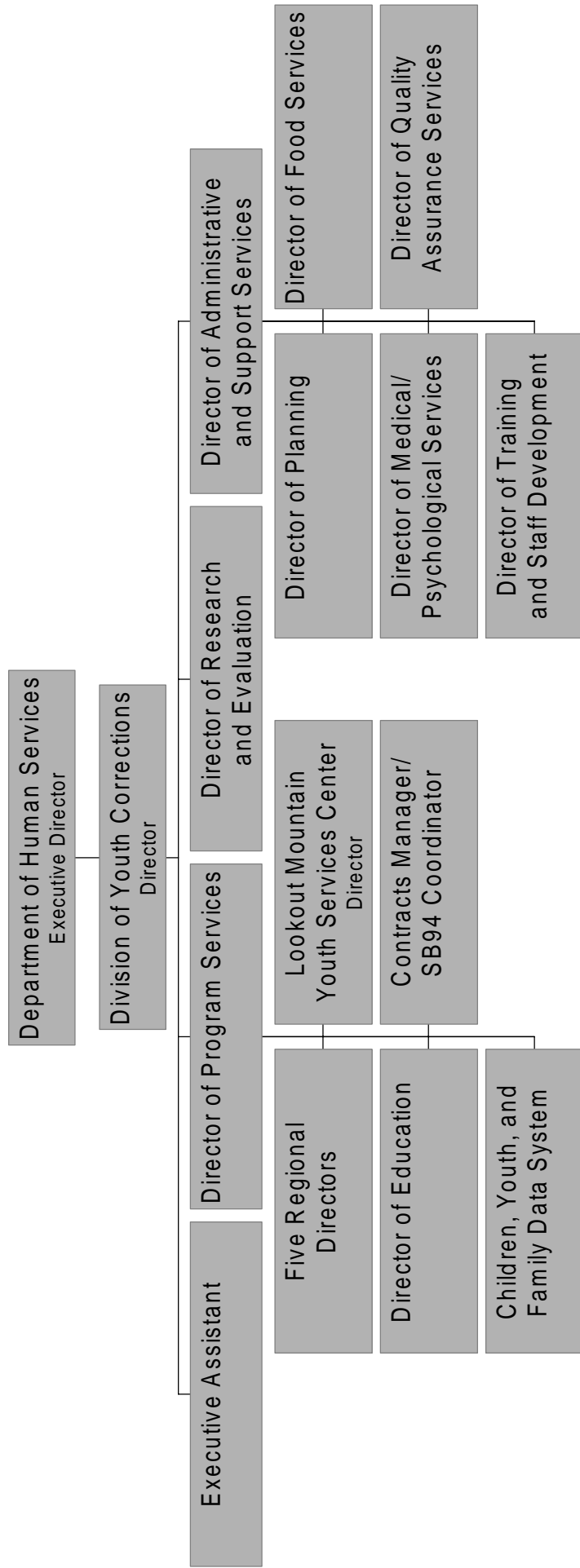
The Division is developing a new integrated data system in conjunction with the Division of Child Welfare. This new management information system will provide more timely and complete information on client characteristics, programs and client outcomes. This new system will be on-line in 2001.

Thank you for your interest in the Division of Youth Corrections. Additional information is available on our web site at <http://www.cdhs.state.co.us/dyc/Home.htm>.

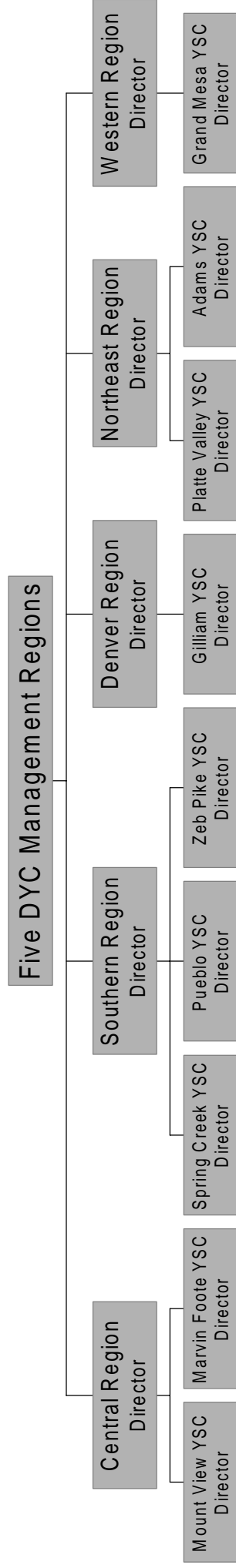
Sincerely,

Betty K. Marler
Director, Division of Youth Corrections

Division of Youth Corrections Organizational Flowchart



Division of Youth Corrections Regional Management Structure





THE COLORADO DIVISION OF YOUTH CORRECTIONS

VISION

“Establishing the Standard of Excellence in the Juvenile Justice System.”

MISSION

The purpose of the Division of Youth Corrections is to provide a statewide continuum of services and programs to control, assess and treat youths in order to protect the public's safety and to reduce delinquent behavior by:

- Recognizing our public responsibility and committing our efforts to the highest level of customer service and consumer satisfaction;
- Preserving the safety and security of the community through effective supervision of youth;
- Providing appropriate assessment and classification of youths;
- Providing programming which emphasizes accountability of youths for their behavior;
- Providing interventions to reduce recidivism and assist the juvenile in becoming a productive member of society;
- Involving families in the planning and delivery of services;
- Recognizing the experience of citizens and communities as victims of crimes and fully supporting their efforts of restoration;
- Joining with communities in developing collaborative community-based juvenile correctional programs;
- Upholding professional correctional standards.





DIVISION OF YOUTH CORRECTIONS

TABLE OF CONTENTS

| | |
|--|-----------|
| GLOSSARY OF TERMS USED | ii |
| EXECUTIVE SUMMARY | ix |
| SECTION I: COLORADO STATE TOTALS | |
| <i>FILTERING PROCESS TO COMMITMENT</i> | <i>3</i> |
| <i>FILTERING PROCESS TO DETENTION</i> | <i>4</i> |
| <i>ADP IN COMMITMENT PROGRAM SERVICES</i> | <i>5</i> |
| <i>ADP IN DETENTION PROGRAM SERVICES</i> | <i>6</i> |
| <i>POPULATION DATA ON ALL CLIENTS</i> | <i>7</i> |
| SECTION II: COMMITMENT PROGRAM SERVICES | |
| <i>COMMITMENT POPULATION TRENDS (1988-1999)</i> | <i>9</i> |
| <i>COMMITMENT POPULATION TRENDS BY PROGRAM TYPE</i> | <i>11</i> |
| <i>TRENDS IN COMMITMENT ADP BY PROGRAM TYPE</i> | <i>13</i> |
| <i>TRENDS IN COMMITMENT LENGTH OF STAY BY PROGRAM TYPE</i> | <i>14</i> |
| <i>POPULATION TRENDS BY SENTENCE AND COMMITMENT TYPE</i> | <i>15</i> |
| <i>POPULATION TRENDS BY COMMITMENT CLASSIFICATION SCORES</i> | <i>16</i> |
| <i>PAROLE POPULATION TRENDS AND CHARACTERISTICS</i> | <i>18</i> |
| <i>COLORADO JUVENILE COMMITMENT RATES BY MAJOR COUNTIES</i> | <i>19</i> |
| <i>DEMOGRAPHIC TRENDS</i> | <i>20</i> |
| <i>COMMITMENT POPULATION CHARACTERISTICS BY GENDER</i> | <i>21</i> |
| SECTION III: DETENTION PROGRAM SERVICES | |
| <i>DETENTION POPULATION TRENDS (1988-1999)</i> | <i>24</i> |
| <i>DETENTION POPULATION TRENDS BY PROGRAM TYPE</i> | <i>26</i> |
| <i>COLORADO JUVENILE DETENTION RATES BY MAJOR COUNTIES</i> | <i>27</i> |
| <i>DEMOGRAPHIC AND OTHER CHARACTERISTICS</i> | <i>28</i> |
| <i>DETENTION POPULATION CHARACTERISTICS BY GENDER</i> | <i>30</i> |
| SECTION IV: REGIONAL SUMMARIES | |
| <i>DENVER REGION</i> | <i>33</i> |
| <i>CENTRAL REGION</i> | <i>36</i> |
| <i>SOUTHERN REGION</i> | <i>41</i> |
| <i>NORTHEAST REGION</i> | <i>46</i> |
| <i>WESTERN REGION</i> | <i>51</i> |

Glossary of Terms Used

Disclaimer: These definitions are provided for quick reference purposes only. Please refer to the Colorado Revised Statutes for more complete definitions of legal categories and conditions.

Aggravated Offender (Sentence Type) - These sanctions specify a time period from three to seven years during which time a youth must remain in the custody of the Department of Human Services. Contingent upon court approval, youth may be eligible for nonsecure placement, parole, or transfer to the Department of Corrections (adult corrections).

Assessment - There are five regional assessment locations where youth committed to DYC are assessed to determine youth's classification level and needs for appropriate placement and program referral.

Assessment LOS - The average amount of time spent in assessment for youth discharged from DYC during the reporting period. Statutorily, the assessment period must be completed within 30 days of a youth's commitment.

Average Daily Caseload (ADC) - The average number of active youth on parole during the time period. Youth on parole who were on escape status during the time period are not included.

Average Daily Population (ADP) - The average number of youth present in a facility or program during the reporting period.

Boot Camp - The 60-day Regimented Juvenile Training Program (RJTP) was relocated to the grounds of the Colorado Mental Health Institute in Pueblo from Golden, CO at the end of FY1995-96.

Boot Camp Sentence - A court imposed sentence to the RJTP as a condition of probation. The sentence includes a 60-day military style residential program followed by an aftercare program on supervised probation.

Clients Served: Commitment - The total number of youth served in a particular program during the reporting period. Total clients served in a given category (e.g. secure, staff secure, or community) represents unduplicated counts of clients served in those categories. Since youth can be served in more than one type of program in the course of a year, the total clients served in a particular category will not equal the sum of the clients served in each program.

Clients Served: Detention - The total number of youth served in a particular program during the reporting period. Total clients served in a facility or program (e.g. Adams YSC, Boot Camp, or staff secure detention) represents unduplicated counts of clients served in those facilities. Since the same youth can have multiple admissions to detention and be served in more than one particular facility in the course of a year, the total clients served in all facilities will not equal the sum of the clients served in each facility.

Commitment - Commitments are dispositions of juvenile cases resulting in the transfer of legal custody to the Department of Human Services by the court as a result of an adjudicatory hearing on charges of delinquent acts committed by the youth.

Commitment Classification - An objective commitment classification instrument is administered during assessment to guide the placement decisions concerning the type of commitment program most suitable for individual youth given the severity of their commitment offense coupled with the risk of reoffending.

Commitment Programs - Youth can participate in any or all of six components of the DYC Commitment Program: Assessment, Orientation, Secure Programs, Staff Secure Programs, Community Programs, and Parole.

Commitment Sentences - Juveniles who have been adjudicated delinquent and committed to the Division of Youth Corrections can be given either nonmandatory or mandatory sentences. Mandatory sentences can include repeat and violent offenders. Juveniles can also be sentenced as aggravated offenders (see *C.R.S. 19-2-601*).

Community LOS - The average amount of time spent in community programs for youth discharged from DYC during the reporting period.

Community Programs - DYC contracts with a number of private vendors to provide community-based programs to youth presenting the lowest risk of reoffending and youth transitioning from more secure programs. These programs include both group residential care and foster care programs.

Concurrent Sentence - A recommitment sentence which runs simultaneous to the original commitment sentence.

Consecutive Sentence - A recommitment sentence which runs consecutive to the original sentence.

Contempt Sentence - A detention sentence can be applied for failure to obey a court's lawful orders. Sentences are applied to youth who have disobeyed a court order, acted disruptively in court, or used objectionable language in a courtroom.

Court Order Detention Hold - Detention holds resulting from a court order pending adjudication, disposition, evaluation or other action. Decision to hold generally reflects reasonable evidence to believe that juvenile may be in danger to him/herself, or to the community.

Courtesy Detention Hold - Temporary detention holds for other agencies such as immigration or pending transfer to other agencies.

Delinquent Sentence – (see also *703H Sentence*) Court imposed sentence to detention for delinquent act and youth is not under probation supervision.

Dependency and Neglect Detention Hold - Temporary protective custody hold in shelter care or staff secure detention which cannot exceed 72 hours, excluding Saturdays, Sundays, and court holidays.

Detention - The custodial status of youth who are being confined after arrest or while awaiting the completion of judicial proceedings. Detention facilities hold youth who are awaiting trial, serving detention sentences or awaiting commitment placement (either institutional or community based).

Detention Admission - Each admission to detention for temporary custody of youth are tracked under the admission category. In contrast to unduplicated counts of clients served in detention, one youth can have multiple admissions for a single incident. For example, if a youth is admitted to detention on a pretrial basis (preadjudicated) and released, a later sentencing to detention on the original charge would count as a separate admission even though it is the same youth and the same incident. Likewise, if the youth serves out the sentence on weekends, each separate weekend admission counts as separate admissions.

Detention Intake – A youth who is temporarily in the physical custody of a detention facility either pending release or transport but who is not admitted and placed in contact with the general detention population is considered an “intake” but not an admission.

Detention Sentence - The court imposed sanction of confinement to a detention facility or boot camp as a result of an adjudicatory hearing which determined that a delinquent act had been committed. Major sentence types include probation sentences, traffic sentences, handgun sentences, municipal sentences, game and fish sentences, contempt sentences, and 703H sentences (non-probation sentences for a delinquent act; see *Delinquent Sentence*).

Game-Fish Sentence - Court imposed detention sentence for violation of game and fish ordinances.

Handgun Sentence - Court imposed detention sentence for the crime of juvenile possession of a handgun.

Interrupted Detention Hold - Detention hold in partial fulfillment of a court imposed detention sentence. The most common instance is a sentence served over two or more weekends.

Interstate Compact on Juveniles (ICJ) - An agreement between eligible jurisdictions in the United States and its territories which provides the means for these jurisdictions to function cooperatively in the return of escapees and absconders. ICJ includes the cooperative supervision of parolees between states.

Length of Stay (LOS): Commitment - There are several variations of the length of stay measure. All commitment LOS figures are measured in months and are calculated for those youth who spent time in the program for which LOS is reported (e.g., secure) prior to discharge from NYC custody (including either residential or nonresidential parole supervision).

Length of Stay (LOS): Detention - The amount of time spent in a detention facility or program during the time period. All detention LOS figures are measured in days.

Mandatory Sentences- These sanctions specify a minimum time period of up to 24 months or less during which a youth must be in an out-of-home placement.

Municipal Sentence - Court imposed detention sentence for violation of municipal ordinances.

New Commitment - Commitment of youth who were not previously committed, or who were previously committed but had been discharged from NYC rolls, including parole.

Nonmandatory Sentences - These sanctions involve no minimum out-of-home sentence length, and the maximum sentence length cannot exceed 24 months.

Orientation Program - The goal of this 45-75 day privately- operated program housed at the Lookout Mountain Youth Services Center is to prepare committed youth for their next commitment placement. The program focuses on improving youths' attitudes in working with peers and adults and fostering a willingness to change. This component of the NYC Commitment Program opened on July 1, 1996.

Parole - The status of an offender conditionally released from a residential setting by discretion of the juvenile parole board prior to expiration of commitment, required to observe conditions of release, and placed under the supervision of a parole officer.

Parole LOS -The average amount of time spent on parole for youth discharged from NYC during the reporting period.

Parole Modification - The administrative action of the juvenile parole board which changes a youth's conditions of parole in response to a violation of previous conditions of parole.

Parole Revocation - The administrative action of the juvenile parole board which removes a youth from parole status in response to a violation of lawfully required conditions of parole, including the prohibition against commission of a new offense. Further parole hearings are scheduled at the discretion of the youth's client manager.

Parole Suspension - The administrative action of the juvenile parole board which removes a youth from parole status in response to a violation of lawfully required conditions of parole, including the prohibition against commission of a new offense. Reconsideration of parole must occur within 90 days on a date determined by the parole board.

Parole Violation - The act, or the failure to act, by a parolee, which does not conform to the conditions of parole.

Police Detention Hold - A juvenile may be taken into temporary custody by a law enforcement officer without a court order when there are reasonable grounds to believe that the juvenile has committed a delinquent act.

Preadjudicated - The legal status of youth pending delinquency adjudication decisions. Often these youth are referred to as pre-trial youth since they are generally admitted pending some court action.

Privately Operated Programs - Detention or commitment programs which are administered by a private entity through the state contracting for services process. Privately operated programs can be administered in privately owned or state owned facilities.

Prior Adjudications - Adjudications which occurred prior to the current detention or commitment event.

Prior Out-of-home Placements - Placements in a Social Services residential program or other treatment program for an extended period prior to commitment.

Probation Sentence - A court imposed detention sentence as a condition of probation or as a violation of the terms and conditions of probation.

Recommitment - An additional commitment imposed by the court on a youth who has not yet been removed from DYC rolls, including parole.

Repeat Offender (Sentence Type) - A 'repeat' sentence type can be imposed on a juvenile who has been previously adjudicated a juvenile delinquent and is adjudicated a juvenile delinquent for a delinquent act that constitutes a felony or if his or her probation is revoked for a delinquent act that constitutes a felony. The court may or may not designate a minimum sentence length.

Regional Management Structure - Decentralized DYC management structure comprised of five geographic regions in the state.

Residential Programs - Programs that provide 24-hour care.

Residential LOS - is the average amount of time spent in all residential programs (assessment, orientation, secure, staff secure, and community programs) for youth discharged from DYC during the reporting period.

Return Commitment – Used to describe detention stays of youth who were previously committed to the Department of Human Services and who have not yet been discharged. The reasons for admission into a detention center vary for these youth. The most common reasons include awaiting court action on new offenses, awaiting placement into a commitment program following a court or community review board decision, or awaiting a parole board action on a suspension or revocation hearing.

Runaway Detention Hold - Detention holds due to runaway from home or placement, or out-of-state runaways.

703H Sentence – (see also *Delinquent Sentence*) Court imposed sentence to detention for delinquent act and youth is not under probation supervision.

Situational Detention Hold - Temporary detention hold pending transportation or release to a parent or guardian.

Social Service Detention Hold - Temporary detention hold for youth under Social Services supervision pending evaluation, placement or other court decision.

Staff Secure Programs – Privately-operated staff secure programs provide 24-hour line-of-sight supervision of youth.

State Operated Programs - Detention or commitment programs which are administered by DYC employees in DYC owned facilities.

Total Commitment LOS - The average amount of time in DYC custody (sentence start date to discharge date including parole) for all youth discharged from DYC during the reporting period.

Traffic Sentence - Court imposed detention sentence due to violation of traffic ordinances.

Violent Offender (Sentence Type) - A juvenile may be sentenced as a violent offender if he or she is adjudicated a juvenile delinquent for a delinquent act that constitutes a crime of violence as defined in section 16-11-309(2), Colorado Revised Statutes.

EXECUTIVE SUMMARY

The Management Reference Manual is designed to provide statistical information on youth served by the Division of Youth Corrections (DYC) during FY1998-99 and other trend data. Section I contains statewide population statistics while Sections II and III provide detailed population statistics describing the commitment and detention program services, respectively. Section IV contains population statistics for each of the Division's management regions. Trends in population data and client demographic characteristics are included in each section. Unless otherwise noted, all data for this report are extracted from the DYC Client Data System. A summary of key statistics provided in the report is discussed below.

I. STATE TOTALS

A. Clients Served¹

- There were 9,889 unduplicated youth served in DYC programs during fiscal year 1998-99; 8,924 youth in detention programs and 2,269 youth served in commitment programs. (Clients served in detention and commitment programs cannot be summed as per footnote below).
- There were 914 youth served on parole during the fiscal year.

B. DYC Population Summary

- There was an average daily population (ADP) of 2,080 youth in all DYC programs including detention (602), commitment residential (1,112), and parole (366) during FY1998-99.
- There were 15,212 detention admissions and 878 new commitments in FY1998-99.

II. COMMITMENT POPULATION TRENDS AND CHARACTERISTICS

A. Population Trends

- The number of youth entering DYC commitment programs has increased at more than twice the growth rate of 10-17 year olds in the general population; the number of 10-17 year olds has grown by 35 percent since 1989 while the number of youth entering DYC commitment programs has increased by 72 percent.
- There was an ADP of 1,478 youth in commitment programs in FY1998-99; 1,112 in residential programs and 366 on parole.
- Thirty-four percent of the commitment residential ADP was served in state-operated commitment programs and 66 percent was served in contracted programs.
- Average residential length of stay (LOS) increased from 15.1 months in FY1997-98 to 15.6 months in FY1998-99.
- The residential ADP has increased by 153 percent during the past ten years, outpacing the rate of increase in the number of new commitments. The number of new commitments has grown by 85 percent since FY1988-89.
- Length of stay on parole has increased from an average of 6.8 months in FY1997-98 to 8.2 months in FY1998-99.

¹ Clients served represents the total number of youth served in a particular program during the reporting period. Total clients served in a given category (e.g. detention or commitment programs) represents unduplicated counts of clients served in those categories. Since youth can be served in more than one type of program in the course of a year, the total clients served in a particular category will not necessarily equal the sum of the clients served in each program.

B. Population Characteristics

1. Gender

- Eighty-nine percent of the average daily population in residential placements was male in FY1998-99.
- The average daily population of females has been growing at a faster rate than that of males since FY1996-97. The percentage of the average daily population that is female has grown by 109 percent since FY1996-97. In contrast, the male average daily population has grown by approximately 14 percent during the same time period.
- Although the residential length of stay has been increasing for both males and females since FY1996-97, males discharged from custody during FY1998-99 had spent an average of 3.3 months longer in residential programs compared to females. Males discharge in FY1998-99 had spent an average of 16.0 months in residential programs.

2. Ethnicity

- Anglo-American youth (49 percent) have consistently represented the largest single ethnic group in residential programs followed by Hispanic/Latino youth (31 percent) and African-American youth (17 percent). Minority youth, however, are overrepresented in relation to the total juvenile population in Colorado.

3. Age²

- The average age of youth at commitment has remained relatively constant at 16.4 years since FY1996-97.
- Seventeen-year-olds were the largest single age group entering DYC commitment programs in FY1998-99.

4. Other Characteristics

- The proportion of new commitments sentenced as mandatory offenders has steadily increased since FY1996-97. Fifty percent of the youth committed in FY1998-99 were sentenced as mandatory offenders compared to 40 percent in FY1996-97.
- The average age at first adjudication among new commitments was 14.2 years.
- Sixty percent of new commitments had been placed out-of-home at least twice prior to commitment. (Seventy-nine percent had one or more out-of-home placements).
- Sixty-two percent of new commitments had a history of running away during the 12 months prior to being committed. Eighty-four percent of newly committed females had a history of running away prior to commitment.
- Eighty-six percent of new commitments were identified during assessment as in need of drug/alcohol services. However, only 8 percent of new commitments were committed for drug offenses.
- Seventy-six percent of new commitments had at least one previous adjudication prior to their current commitment.

² Average age at commitment has been recalculated for the past three years and is slightly higher than figures reported in previous manuals. In prior years these calculations were based on discrete (e.g., 16 years) values for age and are now based on continuous (e.g., 16.487) values.

III. DETENTION POPULATION TRENDS AND CHARACTERISTICS

A. Population Trends

- The number of youth in DYC detention facilities has increased at a significantly faster pace than the growth rate of 10-17 year olds in the general population. The number of 10-17 year olds has grown by 35 percent since 1989 while the average number of youth in DYC detention facilities on any given day has increased by 134 percent.
- The ADP in state-operated detention programs represented 78 percent of the total detention ADP; state-operated detention programs maintained an ADP of 470 youth in FY1998-99.
- The average length of stay (LOS) in detention facilities has been increasing steadily since FY1988-89; from 9.7 days to 14.6 days.
- The detention ADP has increased by 134 percent during the past ten years, outpacing the rate of increase in the number of detention admissions. The number of detention admissions has grown by 73 percent since FY1988-89.

B. Population Characteristics

1. *Gender*

- Eighty-two percent of the ADP in detention facilities in FY1998-99 was male.
- Although the length of stay has been increasing for both males and females since FY1996-97, the LOS for males released from detention was an average of 4.9 days longer compared to females. Males released in FY1998-99 had spent an average of 15.7 days in detention.

2. *Ethnicity*

- Anglo-American youth (47 percent) have consistently represented the largest single ethnic group in DYC detention facilities, followed by Hispanic/Latino youth (34 percent), and African-American youth (15 percent). Minority youth, however, are overrepresented in relation to the total juvenile population in Colorado.

3. *Age*³

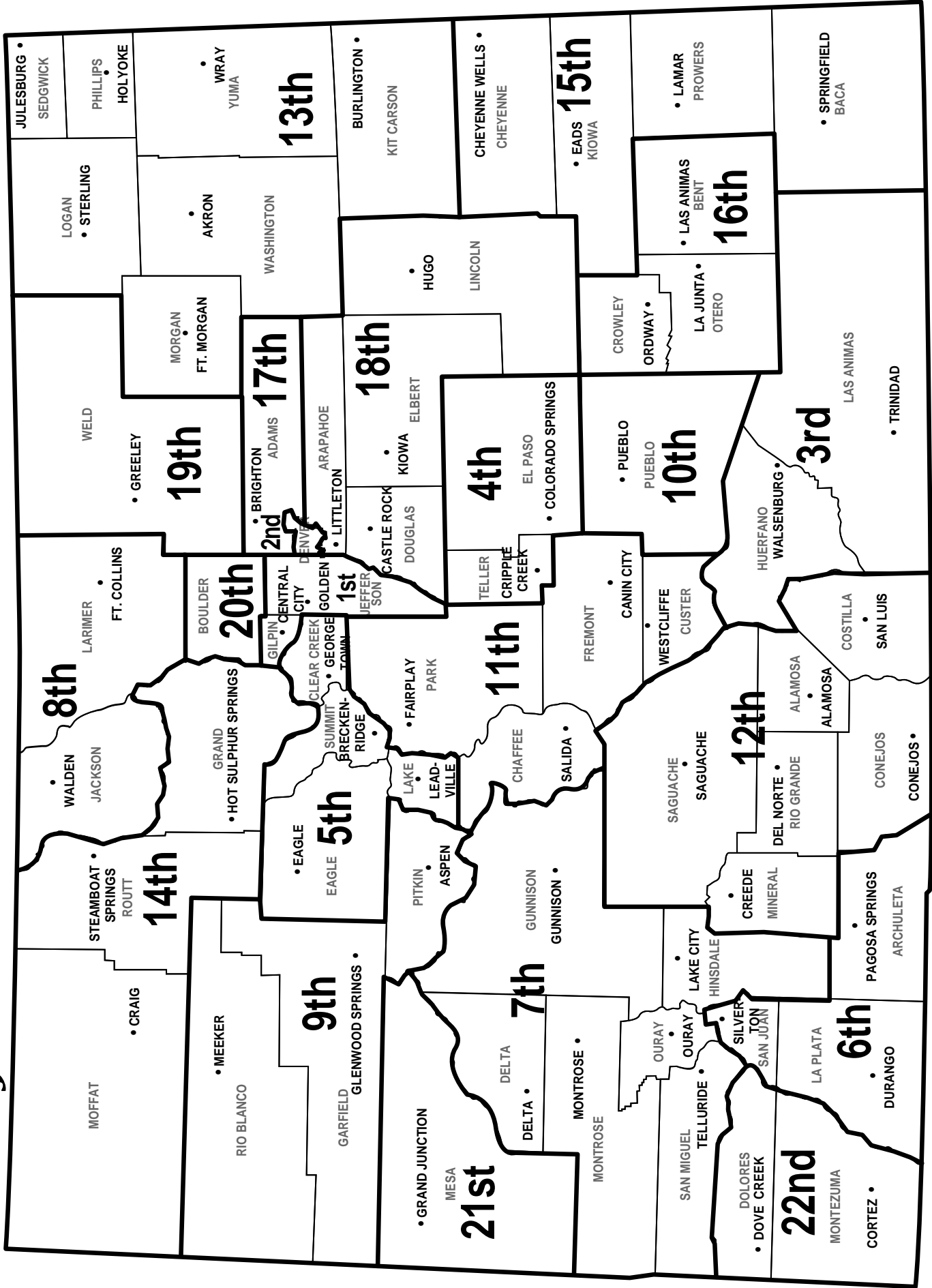
- The average age at detention admission has remained relatively stable at 16.0 years since FY1996-97.
- Almost 28 percent of the youth entering detention facilities were age 17.

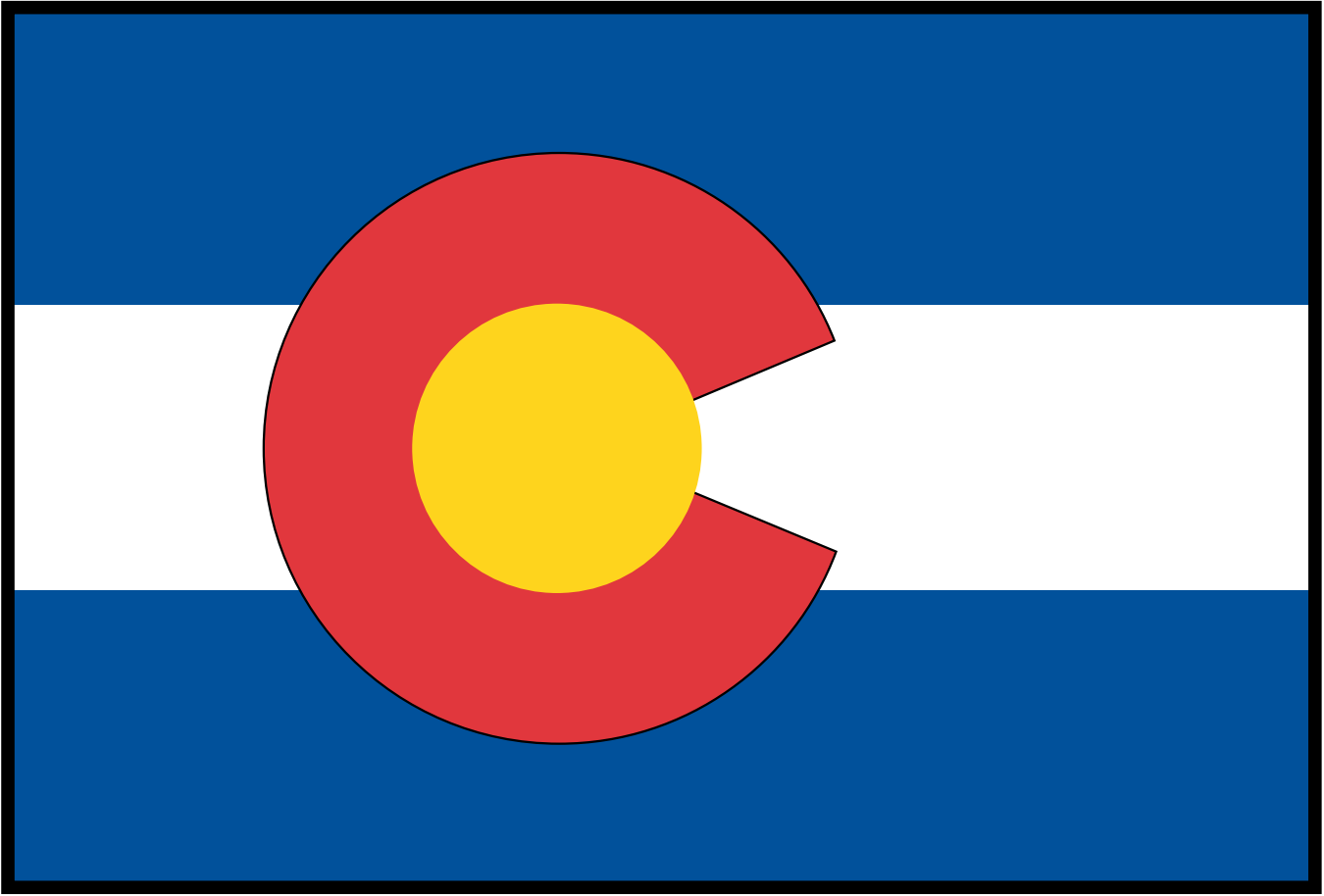
4. *Reasons Held/Legal Status*

- Seventy-six percent of the detention ADP during FY1998-99 was admitted due to court (52 percent) or police (24 percent) action.
- More than half of the detention ADP was preadjudicated (64 percent) followed by sentenced (23 percent) and committed (13 percent).
- Twenty percent of the preadjudicated youth in detention facilities during last fiscal year were detained on mandatory felony holds.
- Forty-five percent were being held on delinquency charges.
- The remaining preadjudicated youth were being detained on failure to appear warrants (16 percent) or for probation violations (20 percent).

³ Average age at detention admission has been recalculated for the past three years and is slightly higher than figures reported in previous manuals. In prior years these calculations were based on discrete (e.g., 16 years) values for age and are now based on continuous (e.g., 16.487) values.

Judicial Districts of Colorado





SECTION I

COLORADO STATE TOTALS

JUVENILE JUSTICE FILTERING PROCESS TO COMMITMENT

Juvenile Population Age 10-17 Years

Number of Youths FY1998-99
471,949

Juvenile Arrests
69,650

100.0%

14.8%

Juvenile Filings
18,395

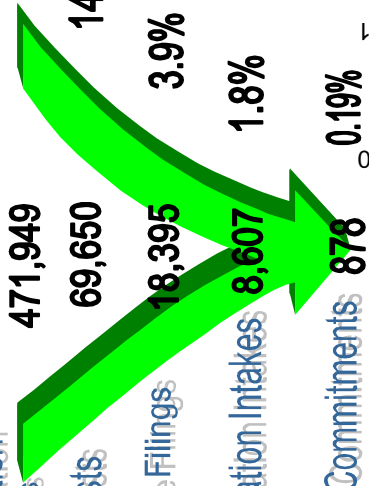
3.9%

Probation Intakes
8,607

1.8%

Juvenile Commitments
878

0.19%



| | FY 1989-90 | FY 1990-91 | FY 1991-92 | FY 1992-93 | FY 1993-94 | FY 1994-95 | FY 1995-96 | FY 1996-97 | FY 1997-98 | FY 1998-99 |
|---|------------|------------|------------|------------|------------|------------|------------|------------|------------|------------|
| Age 10-17 Population ¹ | 355,879 | 369,413 | 383,677 | 399,305 | 414,480 | 428,844 | 441,891 | 454,013 | 463,655 | 471,949 |
| Juvenile Arrests ² | 48,403 | 51,884 | 54,626 | 53,595 | 55,012 | 56,199 | 59,884 | 60,755 | 70,710 | 69,650 |
| Arrests as % of population | 13.6% | 14.0% | 14.2% | 13.4% | 13.3% | 13.1% | 13.6% | 13.4% | 15.3% | 14.8% |
| Juvenile Delinquency Filings ³ | 11,039 | 10,710 | 12,718 | 11,911 | 12,570 | 15,175 | 17,577 | 19,063 | 19,214 | 18,395 |
| Filings as % of Arrests | 22.8% | 20.6% | 23.3% | 22.2% | 22.8% | 27.0% | 29.4% | 31.4% | 27.2% | 26.4% |
| Number of Probation Intakes | 5,367 | 5,753 | 6,377 | 6,669 | 6,858 | 7,174 | 7,201 | 7,753 | 8,694 | 8,607 |
| Intakes as % of Filings | 48.6% | 53.7% | 50.1% | 56.0% | 54.6% | 47.3% | 41.0% | 40.7% | 45.2% | 46.8% |
| Number of Commitments ⁴ | 509 | 543 | 607 | 542 | 552 | 606 | 693 | 762 | 781 | 878 |
| Commitments as % of Intakes | 9.5% | 9.4% | 9.5% | 8.1% | 8.0% | 8.4% | 9.6% | 9.8% | 9.0% | 10.2% |
| Commitments as % of Population | 0.14% | 0.15% | 0.16% | 0.14% | 0.13% | 0.14% | 0.16% | 0.17% | 0.17% | 0.19% |

¹Colorado State Department of Local Affairs. Population data are reported for calendar years. Population data for calendar years 1989-90 are based upon the 1980 census. Population data for 1990 are based upon the 1990 census, and population data for 1991-1999 are projected from the 1990 data. Population estimates for the years 1990-98 have been revised and may not match figures reported in the Management Reference Manual in prior years. **Note:** House Bill 96-1005 passed during FY1996-97 allows for commitment of ten year olds. Commitment rates from previous years have therefore been adjusted to reflect a larger population base. In reports from prior years, commitment rates were calculated based on a population of 12-17 year olds.

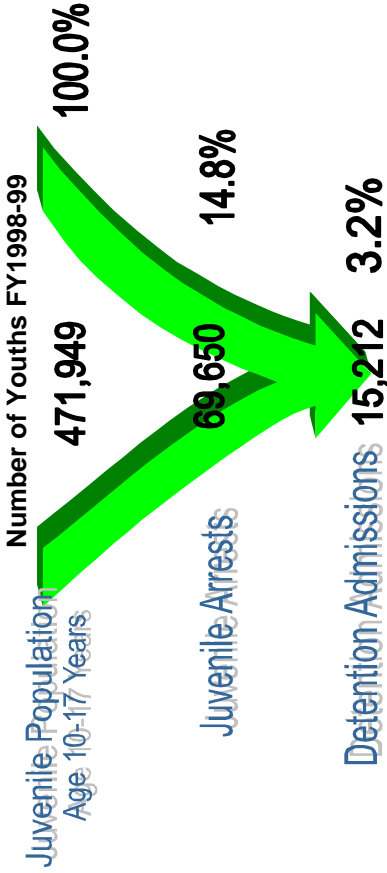
²Colorado Bureau of Investigation, 'Uniform Crime Report,' 1989 thru 1998 calendar years.

³Includes only Delinquency and CHINS (CHINOS) filings and new cases on probation supervision.

Colorado Judicial Branch Annual Report Statistical Supplement: Fiscal Years 1989-90 thru 1998-99

⁴Includes only new commitments. Division of Youth Corrections.

JUVENILE JUSTICE FILTERING PROCESS TO DETENTION



| | FY 1989-90 | FY 1990-91 | FY 1991-92 | FY 1992-93 | FY 1993-94 | FY 1994-95 | FY 1995-96 | FY 1996-97 | FY 1997-98 | FY 1998-99 |
|-----------------------------------|------------|------------|------------|------------|------------|------------|------------|------------|------------|------------|
| Age 10-17 population ¹ | 355,879 | 369,413 | 383,677 | 399,305 | 414,480 | 428,844 | 441,891 | 454,013 | 463,655 | 471,949 |
| Juvenile Arrests ² | 48,403 | 51,884 | 54,626 | 53,595 | 55,012 | 56,199 | 59,884 | 60,755 | 70,710 | 69,650 |
| Arrests as % of population | 13.6% | 14.0% | 14.2% | 13.4% | 13.3% | 13.1% | 13.6% | 13.4% | 15.3% | 14.8% |
| Detention Admissions ³ | 10,333 | 11,402 | 11,988 | 12,388 | 16,197 | 16,638 | 13,858 | 14,652 | 15,428 | 15,212 |
| Admissions as % of Arrests | 21.3% | 22.0% | 21.9% | 23.1% | 29.4% | 29.6% | 23.1% | 24.1% | 21.8% | 21.8% |
| Admissions as % of Population | 2.9% | 3.1% | 3.1% | 3.1% | 3.9% | 3.9% | 3.1% | 3.2% | 3.3% | 3.2% |

¹Colorado State Department of Local Affairs. Population data are reported for calendar years. Population data for calendar years 1989-90 are based upon the 1980 census. Population data for 1990 are based upon the 1990 census, and population data for 1991-1999 are projected from the 1990 data. Population estimates for the years 1990-98 have been revised and may not match figures reported in the Management Reference Manual in prior years.

²Colorado Bureau of Investigation, Uniform Crime Report, 1989 thru 1998 calendar years.

³A cap imposed on Gilliam YSC by the Federal Court in FY 1995-96 resulted in decreased detention admissions.

AVERAGE DAILY POPULATION IN COMMITMENT PROGRAM SERVICES

FY 1998-99

| PROGRAM | 1998 | | | | | | 1999 | | | | | | YTD ADP |
|----------------------------------|--------------|--------------|--------------|--------------|--------------|--------------|--------------|--------------|--------------|--------------|--------------|--------------|--------------|
| | July | Aug | Sept | Oct | Nov | Dec | Jan | Feb | Mar | Apr | May | Jun | |
| ASSESSMENT: | | | | | | | | | | | | | |
| Grand Mesa | 8 | 8 | 7 | 14 | 10 | 10 | 11 | 8 | 7 | 4 | 7 | 5 | 8 |
| Marvin Foote ¹ | 17 | 13 | 14 | 10 | 12 | 16 | 17 | 19 | 18 | 17 | 18 | 15 | 16 |
| Mount View | 11 | 17 | 24 | 27 | 22 | 24 | 22 | 14 | 10 | 12 | 14 | 13 | 17 |
| Platte Valley ² | 11 | 14 | 20 | 17 | 15 | 13 | 14 | 13 | 15 | 9 | 10 | 15 | 15 |
| Spring Creek ³ | 27 | 26 | 22 | 24 | 22 | 22 | 19 | 16 | 11 | 16 | 14 | 12 | 19 |
| TOTAL ASSESSMENT | 74 | 78 | 87 | 92 | 82 | 84 | 82 | 70 | 60 | 58 | 63 | 60 | 75 |
| SECURE/STAFF SECURE | | | | | | | | | | | | | |
| State Operated: | | | | | | | | | | | | | |
| Grand Mesa YSC | 24 | 29 | 27 | 26 | 33 | 29 | 31 | 27 | 32 | 39 | 33 | 38 | 31 |
| Lookout Mountain YSC | 144 | 146 | 149 | 152 | 154 | 154 | 156 | 158 | 156 | 159 | 158 | 153 | 153 |
| Marvin W. Foote YSC ¹ | 0 | 0 | 0 | 0 | 0 | 0 | 0 | 9 | 38 | 41 | 39 | 40 | 14 |
| Mount View YSC ⁴ | 0 | 0 | 0 | 0 | 0 | 0 | 0 | 7 | 31 | 34 | 40 | 43 | 13 |
| Platte Valley YSC ² | 68 | 63 | 61 | 60 | 57 | 58 | 54 | 55 | 47 | 48 | 60 | 64 | 54 |
| Zeb Pike YSC ⁵ | 39 | 37 | 35 | 37 | 38 | 40 | 40 | 42 | 42 | 42 | 42 | 40 | 40 |
| Subtotal State Operated | 275 | 276 | 271 | 276 | 282 | 280 | 280 | 298 | 346 | 361 | 373 | 378 | 304 |
| Privately Contracted: | | | | | | | | | | | | | |
| Aspen | 22 | 29 | 23 | 25 | 31 | 32 | 30 | 30 | 28 | 32 | 36 | 33 | 30 |
| Cedar Springs | 14 | 4 | 5 | 4 | 2 | 2 | 3 | 3 | 3 | 3 | 3 | 2 | 3 |
| Centennial Peaks | 28 | 27 | 28 | 28 | 28 | 28 | 28 | 28 | 28 | 28 | 27 | 24 | 28 |
| Colorado West | 11 | 11 | 9 | 7 | 5 | 11 | 11 | 13 | 12 | 12 | 11 | 11 | 10 |
| Copper Hills | 3 | 5 | 5 | 5 | 5 | 5 | 5 | 5 | 5 | 5 | 4 | 4 | 5 |
| DAYS/Reflections | 23 | 23 | 21 | 24 | 23 | 23 | 23 | 25 | 23 | 24 | 24 | 26 | 24 |
| El Pueblo | 10 | 11 | 11 | 11 | 10 | 9 | 8 | 9 | 11 | 9 | 7 | 5 | 9 |
| Foothills | 25 | 25 | 25 | 23 | 22 | 25 | 25 | 25 | 25 | 24 | 25 | 24 | 25 |
| Fort Logan Mountain Star | 5 | 5 | 5 | 5 | 5 | 5 | 5 | 5 | 5 | 5 | 5 | 4 | 5 |
| Glen Mills | 44 | 43 | 41 | 40 | 41 | 38 | 39 | 40 | 41 | 40 | 40 | 40 | 40 |
| Grand Prairie | 37 | 31 | 24 | 26 | 32 | 33 | 34 | 34 | 36 | 33 | 33 | 32 | 32 |
| Hilltop West | 13 | 13 | 11 | 10 | 10 | 13 | 11 | 12 | 11 | 12 | 12 | 11 | 11 |
| Jefferson Hills Aurora | 32 | 33 | 34 | 32 | 27 | 26 | 27 | 30 | 31 | 32 | 30 | 33 | 33 |
| Jefferson Hills Lkwd | 48 | 50 | 53 | 53 | 55 | 55 | 51 | 47 | 46 | 44 | 45 | 48 | 48 |
| Provo Canyon | 18 | 18 | 20 | 22 | 25 | 26 | 25 | 25 | 23 | 22 | 22 | 22 | 22 |
| Rite of Passage | 32 | 33 | 37 | 39 | 43 | 44 | 44 | 53 | 58 | 60 | 60 | 73 | 48 |
| Sierra Vista | 19 | 19 | 18 | 20 | 20 | 19 | 19 | 18 | 15 | 15 | 13 | 9 | 17 |
| Teen Quest | 19 | 20 | 19 | 20 | 20 | 20 | 20 | 20 | 19 | 20 | 20 | 20 | 20 |
| Youthtrack Lathrop ⁶ | 0 | 10 | 24 | 30 | 30 | 30 | 29 | 33 | 30 | 31 | 32 | 32 | 26 |
| Youthtrack Orientation | 71 | 68 | 76 | 76 | 82 | 77 | 74 | 62 | 57 | 55 | 57 | 48 | 66 |
| Youth Services International | 23 | 26 | 26 | 27 | 29 | 31 | 32 | 27 | 31 | 32 | 33 | 30 | 29 |
| Subtotal Privately Contracted | 497 | 502 | 512 | 525 | 546 | 551 | 542 | 543 | 536 | 535 | 535 | 530 | 531 |
| TOTAL SECURE/STAFF SECURE | 772 | 778 | 783 | 800 | 827 | 831 | 822 | 841 | 883 | 896 | 908 | 908 | 835 |
| TOTAL COMMUNITY | 198 | 197 | 209 | 198 | 192 | 195 | 211 | 219 | 224 | 212 | 205 | 184 | 203 |
| TOTAL RESIDENTIAL | 1,044 | 1,053 | 1,079 | 1,090 | 1,101 | 1,110 | 1,114 | 1,130 | 1,167 | 1,166 | 1,176 | 1,151 | 1,112 |
| TOTAL PAROLE | 293 | 299 | 309 | 318 | 325 | 349 | 349 | 351 | 367 | 384 | 410 | 444 | 366 |

¹Marvin W. Foote YSC began providing assessment services and commitment secure services in FY1998-99.

²Platte Valley YSC opened in November 1997 as a combined detention and commitment facility in Greeley.

³Spring Creek YSC opened in February 1998 as a combined detention and commitment facility in Colorado Springs.

⁴Lathrop Park was closed as a state facility in August, 1997 and reopened as a privately operated facility in August, 1998.

⁵Mount View YSC began providing intensive secure services in FY1998-99.

⁶Zebulon Pike YSC was converted to a commitment facility in FY1998-99 and assessment service are now provided at Spring Creek YSC.

**AVERAGE DAILY POPULATION IN DETENTION PROGRAMS
FY 1998-99**

| | 1998 | | | | | | 1999 | | | | | | YTD ADP |
|-------------------------|------------|------------|------------|------------|------------|------------|------------|------------|------------|------------|------------|------------|------------|
| | July | Aug | Sept | Oct | Nov | Dec | Jan | Feb | Mar | Apr | May | Jun | |
| STATE OPERATED | | | | | | | | | | | | | |
| Adams YSC | 33 | 38 | 33 | 30 | 34 | 29 | 28 | 25 | 33 | 30 | 35 | 34 | 32.6 |
| Gilliam YSC | 69 | 68 | 68 | 68 | 72 | 66 | 63 | 69 | 65 | 61 | 64 | 71 | 68.4 |
| Grand Mesa YSC | 41 | 35 | 31 | 26 | 27 | 32 | 34 | 29 | 35 | 30 | 27 | 32 | 31.5 |
| Marvin Foote YSC | 97 | 73 | 71 | 78 | 79 | 74 | 75 | 72 | 48 | 49 | 61 | 56 | 67.7 |
| Mount View YSC | 89 | 91 | 87 | 108 | 111 | 96 | 88 | 87 | 66 | 66 | 70 | 66 | 85.7 |
| Platte Valley YSC | 60 | 57 | 68 | 62 | 75 | 75 | 75 | 73 | 60 | 56 | 58 | 56 | 63.6 |
| Pueblo YSC | 40 | 35 | 40 | 39 | 40 | 36 | 36 | 34 | 43 | 50 | 46 | 51 | 41.4 |
| Spring Creek YSC | 111 | 74 | 80 | 84 | 81 | 57 | 63 | 80 | 75 | 73 | 87 | 109 | 78.7 |
| Subtotal State Operated | 538 | 470 | 478 | 495 | 518 | 464 | 461 | 469 | 426 | 415 | 447 | 475 | 470 |
| CONTRACTED | | | | | | | | | | | | | |
| Staff Secure Detention | 59 | 64 | 66 | 64 | 55 | 64 | 62 | 57 | 62 | 77 | 77 | 85 | 64 |
| Boot Camp | 52 | 15 | 50 | 72 | 64 | 60 | 59 | 69 | 78 | 73 | 69 | 71 | 68.6 |
| Subtotal Contracted | 110 | 78 | 115 | 136 | 119 | 124 | 121 | 126 | 140 | 150 | 146 | 155 | 133 |
| TOTAL DETENTION | 649 | 548 | 593 | 631 | 636 | 588 | 582 | 595 | 566 | 565 | 594 | 630 | 602 |

DIVISION OF YOUTH CORRECTIONS

**ALL CLIENTS
POPULATION DATA**

FY 1998-99

| | Clients Served¹ | Admissions | ADP | LOS² (months) |
|-----------------------------|---------------------------------------|-------------------|----------------|-------------------------------------|
| COMMITTED YOUTH | | | | |
| Assessment ³ | 960 | | 75.0 | 1.0 |
| State Secure/Staff Secure | 1,053 | | 304.1 | 8.0 |
| Private Secure/Staff Secure | 1,432 | | 530.5 | 9.1 |
| Community Programs | 755 | | 202.7 | 5.2 |
| Parole ⁴ | 914 | | 366.1 | 8.2 |
| Subtotal Committed | 2,269 | | 1,478.4 | 23.6 |
| DETAINED YOUTH | | | | |
| | | | | LOS (days) |
| State-Operated | 7,823 | 12,643 | 469.5 | 13.8 |
| Contracted Staff Secure | 1,836 | 2,124 | 64.3 | 9.7 |
| Boot Camp | 523 | 445 | 68.6 | 57.8 |
| Subtotal Detained | 8,924 | 15,212 | 602.4 | 14.6 |
| TOTAL | 9,889 | | 2,080.9 | |

¹Clients served counts are unduplicated.

²Lengths of stay are defined in the *Glossary of Terms* on page ii.

³The number of youth served in assessment is larger than the number of new commitments since carryovers from the previous fiscal year as well as some recommitted youth were served in assessment during FY1998-99.

⁴Youth participating in the Interstate Compact Program are included in clients served.

SECTION II

COMMITMENT POPULATION
TRENDS AND CHARACTERISTICS

DIVISION OF YOUTH CORRECTIONS

**COMMITTED YOUTH
POPULATION TRENDS**

FY 1988-89 through FY 1998-99

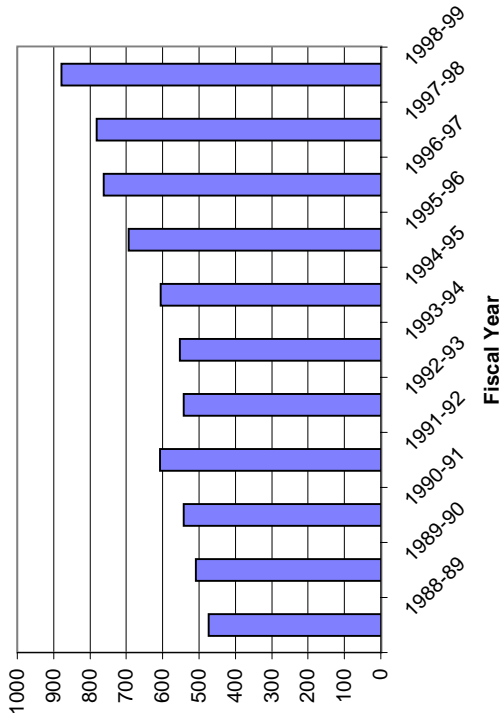
| Fiscal Year | Number of | | No. of New Commitments | Residential | | Average | | |
|-------------|--------------------------------|--------------------------|---------------------------|------------------|--------------------------|----------------------------|--------------------------|-------|
| | Clients Served ¹ | Percentage Change +/- | | ADP ² | Percentage Change +/- | Residential LOS(months) | Percentage Change +/- | |
| 1988-89 | N/A | | 474 | | 438.7 | | 11.8 | |
| 1989-90 | 1,340 | | 509 | 7.4% | 512.9 | 16.9% | 12.3 | 4.2% |
| 1990-91 | 1,492 | 11.3% | 543 | 6.7% | 542.8 | 5.8% | 12.8 | 4.1% |
| 1991-92 | 1,599 | 7.2% | 607 | 11.8% | 563.4 | 3.8% | 13.0 | 1.6% |
| 1992-93 | 1,637 | 2.4% | 542 | -10.7% | 609.3 | 8.1% | 12.1 | -6.9% |
| 1993-94 | 1,622 | -0.9% | 552 | 1.8% | 612.5 | 0.5% | 13.0 | 7.4% |
| 1994-95 | 1,638 | 1.0% | 606 | 9.8% | 633.9 | 3.5% | 13.8 | 6.2% |
| 1995-96 | 1,769 | 8.0% | 693 | 14.4% | 762.9 | 20.4% | 13.7 | -0.7% |
| 1996-97 | 1,891 | 6.9% | 762 | 10.0% | 929.3 | 21.8% | 14.5 | 5.8% |
| 1997-98 | 2,046 | 8.2% | 781 | 2.5% | 973.5 | 4.8% | 15.1 | 4.1% |
| 1998-99 | 2,269 | 10.9% | 878 | 12.4% | 1,112.2 | 14.2% | 15.6 | 3.3% |

¹Clients served counts are unduplicated. Figures not available prior to FY89-90.

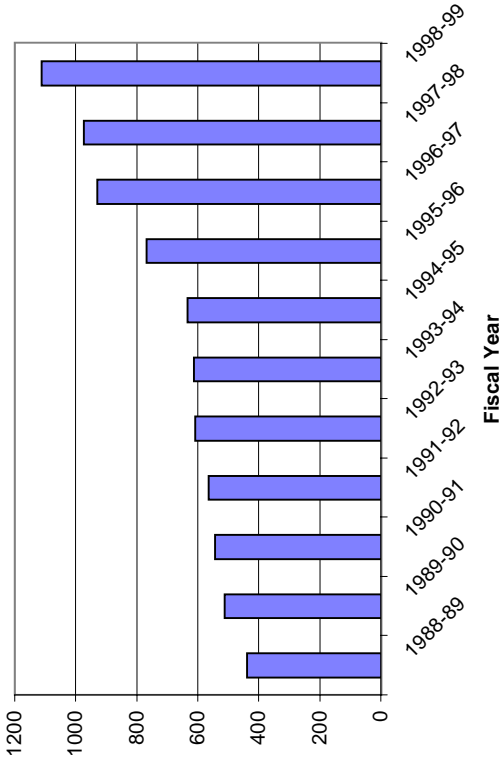
²ADP: Includes assessment, orientation (beginning in FY1996-97), secure/staff secure, and community residential.

DIVISION OF YOUTH CORRECTIONS
Trends in Commitment Populations
FY1988-89 thru FY 1998-99

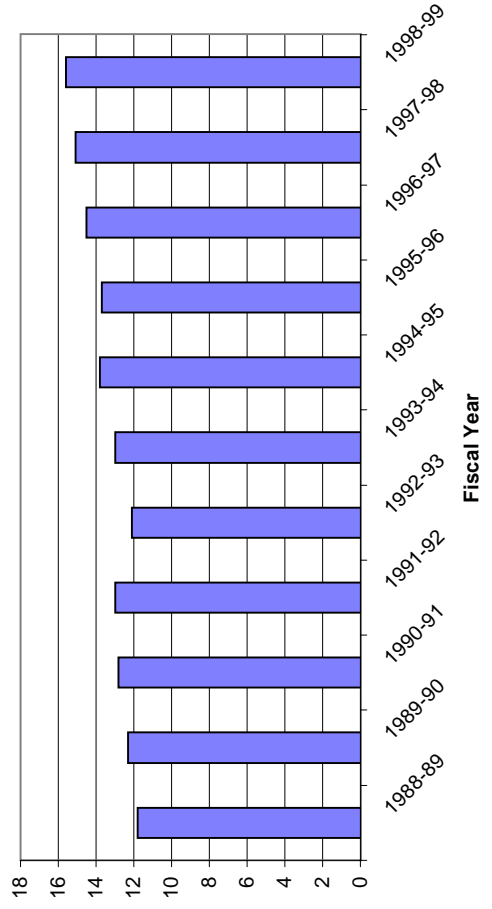
TRENDS IN NEW COMMITMENTS



TRENDS IN RESIDENTIAL ADP



TRENDS IN RESIDENTIAL LOS



DIVISION OF YOUTH CORRECTIONS
COMMITMENT POPULATION TRENDS BY PROGRAM TYPE
FY 1996-97 through FY 1998-99

| | FY 1996-97 | | | FY 1997-98 | | | FY 1998-99 | | |
|--------------------------------------|--------------------------------|--------------|------------------|--------------------------------|--------------|------------------|--------------------------------|--------------|------------------|
| | No. of | Res. | LOS ² | No. of | Res. | LOS ² | No. of | Res. | LOS ² |
| | Clients Served ¹ | ADP (mos.) | | Clients Served ¹ | ADP (mos.) | | Clients Served ¹ | ADP (mos.) | |
| ASSESSMENT³: | | | | | | | | | |
| Grand Mesa YSC | 129 | 8.8 | 0.9 | 127 | 9.8 | 0.9 | 117 | 8.1 | 1.0 |
| Marvin W. Foote YSC ⁴ | -- | -- | -- | -- | -- | -- | 205 | 15.7 | 1.0 |
| Mount View YSC | 497 | 41.4 | 1.0 | 237 | 17.9 | 1.2 | 215 | 17.2 | 1.1 |
| Platte Valley YSC ⁵ | -- | -- | -- | 105 | 6.4 | 0.3 | 202 | 15.0 | 0.8 |
| Spring Creek YSC ⁶ | -- | -- | -- | -- | -- | -- | 240 | 19.0 | 1.0 |
| Zeb Pike YSC | 196 | 11.8 | 0.8 | 213 | 15.9 | 0.4 | 0 | 0.0 | 0.0 |
| TOTAL ASSESSMENT | 819 | 62.0 | 1.0 | 675 | 50.0 | 1.0 | 960 | 75.0 | 1.0 |
| SECURE/STAFF SECURE: | | | | | | | | | |
| State Operated: | | | | | | | | | |
| Grand Mesa YSC | NA | 31.4 | 2.8 | NA | 32.1 | 4.5 | 182 | 31.0 | 3.9 |
| Lathrop Park YSC ⁷ | 80 | 25.8 | 5.0 | 15 | 0.7 | 5.5 | 0 | 0.0 | 4.3 |
| Marvin W. Foote YSC ⁴ | -- | -- | -- | -- | -- | -- | 153 | 13.8 | 0.9 |
| Mount View YSC ⁸ | -- | -- | -- | -- | -- | -- | 159 | 12.6 | 0.7 |
| Lookout Mountain YSC | 328 | 175.7 | 15.5 | 308 | 155.3 | 13.3 | 293 | 153.4 | 12.7 |
| Platte Valley YSC ⁵ | -- | -- | -- | 215 | 45.8 | 2.2 | 280 | 53.6 | 3.3 |
| Spring Creek YSC ⁶ | -- | -- | -- | 43 | 11.0 | 0.9 | 0 | 0.0 | 0.0 |
| Zeb Pike YSC ⁹ | -- | -- | -- | 48 | 2.0 | NA | 83 | 39.7 | 4.1 |
| Subtotal State Operated | 571 | 232.9 | NA | 757 | 246.9 | NA | 1,048 | 304.1 | 8.0 |
| Privately Contracted: | | | | | | | | | |
| Aspen | 179 | 25.9 | 2.2 | 201 | 29.9 | 2.0 | 207 | 30.3 | 2.1 |
| Cedar Springs | 27 | 11.6 | NA | 15 | 6.3 | 8.6 | 8 | 3.0 | 6.8 |
| Centennial Peaks | 38 | 17.5 | NA | 50 | 19.4 | 9.1 | 65 | 27.5 | 11.5 |
| Colorado Boys Ranch | 1 | 0.0 | 5.8 | 0 | 0.0 | 0.0 | 0 | 0.0 | 0.0 |
| Colorado West | 65 | 12.3 | 3.0 | 68 | 11.7 | 2.8 | 60 | 10.1 | 3.4 |
| Copper Hills | -- | -- | -- | 2 | 0.5 | NA | 6 | 4.7 | 0.0 |
| DAYS/Reflections | 214 | 22.8 | 2.0 | 185 | 23.5 | 1.9 | 196 | 23.7 | 1.9 |
| El Pueblo | 17 | 8.9 | 7.9 | 23 | 9.7 | 10.0 | 20 | 9.1 | 9.0 |
| Foothills | 122 | 25.4 | 4.1 | 99 | 24.8 | 4.3 | 102 | 24.5 | 4.1 |
| Fort Logan Mountain Star | -- | -- | -- | 6 | 1.3 | NA | 16 | 4.8 | 3.3 |
| Glen Mills | 96 | 58.1 | 17.1 | 94 | 48.0 | 14.5 | 77 | 40.4 | 15.2 |
| Grand Prairie | 82 | 37.8 | 9.1 | 76 | 38.1 | 10.6 | 75 | 32.1 | 10.7 |
| High Plains | 119 | 59.5 | 9.9 | 101 | 39.8 | 11.9 | 0 | 0.0 | 9.0 |
| Hilltop West | 57 | 12.2 | 2.5 | 53 | 12.4 | 3.8 | 49 | 11.3 | 4.2 |
| Jefferson Hills Aurora | 44 | 13.8 | NA | 87 | 31.6 | 6.3 | 85 | 32.6 | 7.6 |
| Jefferson Hills Lkwd | 125 | 50.1 | 6.8 | 119 | 48.9 | 7.4 | 123 | 48.4 | 8.2 |
| Provo Canyon | 20 | 8.0 | NA | 43 | 18.6 | 6.3 | 46 | 22.4 | 9.6 |
| Rite of Passage | 41 | 25.5 | 12.9 | 54 | 24.6 | 13.2 | 113 | 48.1 | 14.1 |
| Sierra Vista | 32 | 9.3 | NA | 48 | 18.8 | 6.4 | 42 | 16.9 | 6.4 |
| Teen Quest | 42 | 19.6 | 7.3 | 43 | 20.1 | 9.9 | 47 | 19.7 | 9.4 |
| Youthtrack Lathrop ⁷ | -- | -- | -- | -- | -- | -- | 69 | 25.7 | 3.3 |
| Youthtrack Orientation ¹⁰ | 411 | 61.7 | 1.8 | 502 | 72.8 | 1.9 | 445 | 66.0 | 2.1 |
| YSI - Chamberlain | -- | -- | -- | 23 | 2.6 | NA | 11 | 3.8 | 6.0 |
| YSI - Clarinda | -- | -- | -- | -- | -- | -- | 3 | 1.7 | 0.0 |
| YSI - Forest Ridge | -- | -- | -- | -- | -- | -- | 7 | 2.9 | 0.0 |
| YSI - Springfield | -- | -- | -- | -- | -- | -- | 15 | 6.3 | 0.0 |
| YSI - Tarkio | -- | -- | -- | -- | -- | -- | 23 | 13.1 | 6.6 |
| YSI - Woodward | -- | -- | -- | -- | -- | -- | 3 | 1.4 | 3.1 |
| Subtotal Private Contract | 1,219 | 480.0 | NA | 1,358 | 503.4 | NA | 1,432 | 530.5 | 9.1 |
| TOTAL SECURE/STAFF SECURE | 1,639 | 712.9 | 10.56 | 1,768 | 750.3 | 11.3 | 1,896 | 834.6 | 11.7 |

DIVISION OF YOUTH CORRECTIONS
COMMITMENT POPULATION TRENDS BY PROGRAM TYPE
FY 1996-97 through FY 1998-99

| | FY 1996-97 | | | FY 1997-98 | | | FY 1998-99 | | |
|------------------------------------|---------------------|------------------|------|---------------------|------------------|------|---------------------|------------------|------|
| | No. of | Res. | | No. of | Res. | | No. of | Res. | |
| | Clients | LOS ² | | Clients | LOS ² | | Clients | LOS ² | |
| | Served ¹ | ADP (mos.) | | Served ¹ | ADP (mos.) | | Served ¹ | ADP (mos.) | |
| TOTAL COMMUNITY RESIDENTIAL | 537 | 154.4 | 5.3 | 630 | 173.2 | 5.2 | 755 | 202.7 | 5.2 |
| TOTAL RESIDENTIAL | NA | 929.3 | 14.5 | NA | 973.5 | 15.1 | 2,040 | 1,112.3 | 15.6 |

¹Clients served is defined in the *Glossary of Terms* on page ii. Totals on this page for clients served are unduplicated.

²Residential LOS is the average length of stay in months for youth discharged during the time period. Only those youth who spent any time in a program/facility are included in the LOS calculations.

³Some youth were held in detention when the assessment population went beyond capacity. ADP for these youth are included in detention rather than assessment. An additional 1.3 ADP were held in the Marvin Foote Youth Services Center.

⁴Marvin W. Foote YSC began providing assessment services and commitment secure services in FY1998-99.

⁵Platte Valley YSC opened in November 1997 as a combined detention and commitment facility in Greeley.

⁶Spring Creek YSC opened in February 1998 as a combined detention and commitment facility in Colorado Springs.

⁷Lathrop Park was closed as a state facility in August, 1997 and reopened as a privately operated facility in August, 1998.

⁸Mount View YSC began providing intensive secure services in FY1998-99.

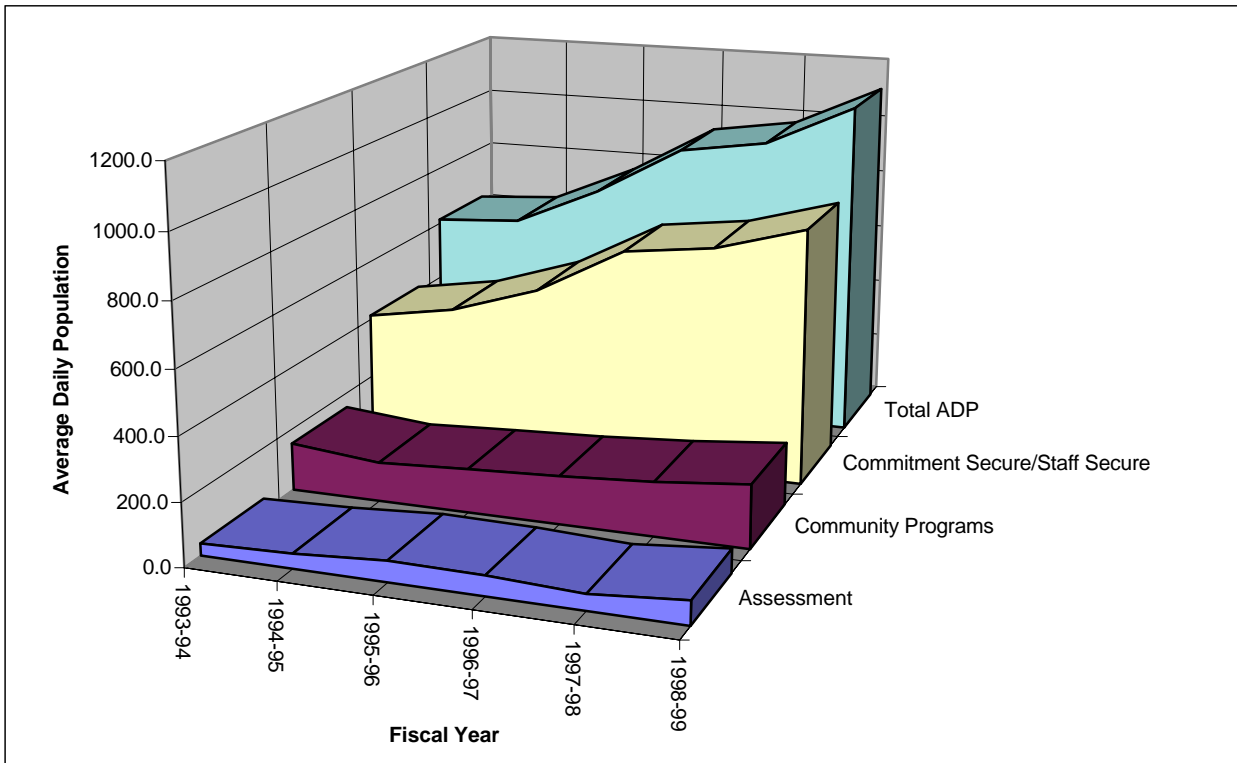
⁹Zebulon Pike YSC was converted to a commitment facility in FY1998-99 and assessment service are now provided at Spring Creek YSC.

¹⁰The Orientation program at LMYSC was opened on July 1, 1996.

**DIVISION OF YOUTH CORRECTIONS
ADP TRENDS IN
RESIDENTIAL PROGRAMS**

| | Fiscal Years: | | | | | |
|--------------------------------|---------------|--------------|--------------|--------------|--------------|----------------|
| | 1993-94 | 1994-95 | 1995-96 | 1996-97 | 1997-98 | 1998-99 |
| Assessment | 38.4 | 46.5 | 65.6 | 62.0 | 50.0 | 75.0 |
| Commitment Secure/Staff Secure | 413.8 | 462.2 | 557.5 | 712.9 | 750.3 | 834.6 |
| Community Programs | 152.1 | 125.2 | 139.8 | 154.4 | 173.2 | 202.7 |
| Other ADP ¹ | 9.4 | 0.0 | 0.0 | 0.0 | 0.0 | 0.0 |
| Total ADP | 613.7 | 633.9 | 762.9 | 929.3 | 973.5 | 1,112.2 |

¹Classification instruments had not been administered to these youth.



TRENDS IN COMMITMENT LENGTH OF STAY BY PROGRAM TYPE¹
FY 1996-97 through FY 1998-99

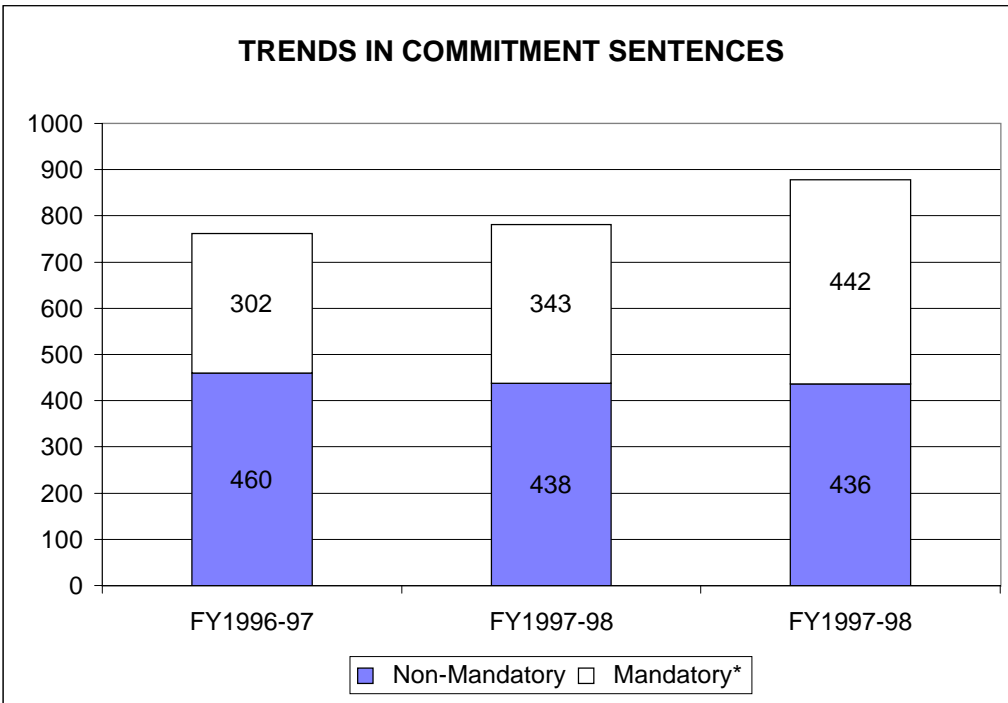
| <u>Program Type</u> | <u>FY 1996-97</u> | <u>FY 1997-98</u> | <u>FY 1998-99</u> |
|--------------------------------|--------------------------|--------------------------|--------------------------|
| Assessment | 1.0 | 1.0 | 1.0 months |
| Commitment Secure/Staff Secure | 10.6 | 11.3 | 11.7 months |
| Community Programs | 5.3 | 5.2 | 5.2 months |
| Total Residential | 14.5 | 15.1 | 15.6 months |
| Total Parole | 7.4 | 6.8 | 8.2 months |
| Total Commitment | 22.5 | 22.1 | 23.6 months |

¹Length of stay in the *Glossary of Terms* on page ii.

DIVISION OF YOUTH CORRECTIONS

**POPULATION TRENDS
BY SENTENCE AND COMMITMENT TYPE
FY 1996-97 through FY 1998-99**

| NEW COMMITMENT SENTENCE TYPE | FY 1996-97 | | FY 1997-98 | | FY 1998-99 | |
|---------------------------------|------------|---------------|------------|---------------|------------|---------------|
| | N | % | N | % | N | % |
| Mandatory: | | | | | | |
| Mandatory | 235 | 30.8% | 269 | 34.4% | 336 | 38.3% |
| Repeat | 57 | 7.5% | 60 | 7.7% | 84 | 9.6% |
| Violent | 5 | 0.7% | 6 | 0.8% | 11 | 1.3% |
| Aggravated Juvenile | 5 | 0.7% | 8 | 1.0% | 11 | 1.3% |
| Non-Mandatory | 460 | 60.4% | 438 | 56.1% | 436 | 49.7% |
| TOTAL | 762 | 100.0% | 781 | 100.0% | 878 | 100.0% |



*Mandatory refers to *mandatory, aggravated juvenile, repeat, and violent* commitment sentences.

| COMMITMENT TYPE | FY 1996-97 | | FY 1997-98 | | FY 1998-99 | |
|-----------------|------------|---------------|------------|---------------|--------------|---------------|
| | N | % | N | % | N | % |
| New Commitment | 762 | 81.6% | 781 | 81.4% | 878 | 82.3% |
| Concurrent | 156 | 16.7% | 160 | 16.7% | 161 | 15.1% |
| Consecutive | 16 | 1.7% | 18 | 1.9% | 28 | 2.6% |
| TOTAL | 934 | 100.0% | 959 | 100.0% | 1,067 | 100.0% |

DIVISION OF YOUTH CORRECTIONS

POPULATION TRENDS BY COMMITMENT CLASSIFICATION SCORES¹

FY 1996-97 through FY 1998-99

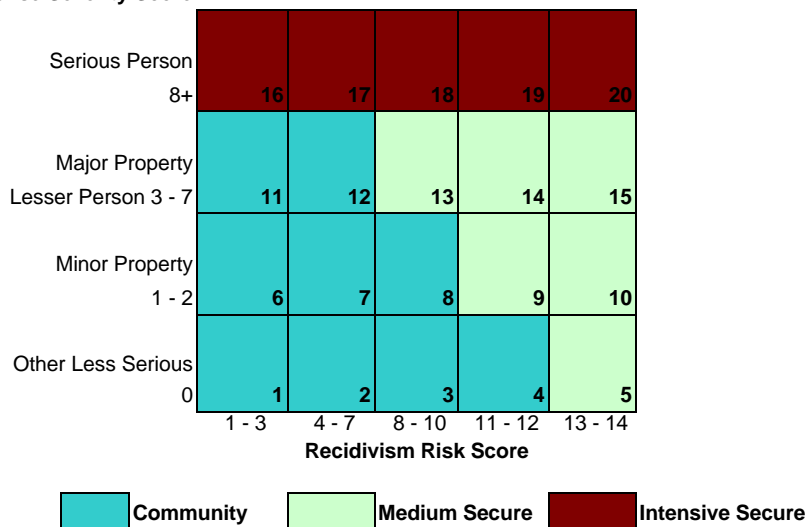
| NEW COMMITMENT CLASSIFICATION | FY 1996-97 | | FY 1997-98 | | FY 1998-99 | |
|-------------------------------|------------|---------------|------------|---------------|------------|---------------|
| | N | % | N | % | N | % |
| Cell 1 | 2 | 0.3% | 1 | 0.1% | 4 | 0.5% |
| Cell 2 | 19 | 2.5% | 15 | 1.9% | 14 | 1.6% |
| Cell 3 | 33 | 4.3% | 19 | 2.4% | 41 | 4.7% |
| Cell 4 | 30 | 3.9% | 25 | 3.2% | 31 | 3.5% |
| Cell 5 | 11 | 1.4% | 8 | 1.0% | 16 | 1.8% |
| Cell 6 | 0 | 0.0% | 0 | 0.0% | 0 | 0.0% |
| Cell 7 | 13 | 1.7% | 17 | 2.2% | 18 | 2.1% |
| Cell 8 | 44 | 5.8% | 51 | 6.5% | 54 | 6.2% |
| Cell 9 | 51 | 6.7% | 60 | 7.7% | 47 | 5.4% |
| Cell 10 | 47 | 6.2% | 50 | 6.4% | 44 | 5.0% |
| Cell 11 | 9 | 1.2% | 7 | 0.9% | 11 | 1.3% |
| Cell 12 | 80 | 10.5% | 86 | 11.0% | 92 | 10.5% |
| Cell 13 | 162 | 21.3% | 149 | 19.1% | 192 | 21.9% |
| Cell 14 | 98 | 12.9% | 98 | 12.5% | 101 | 11.5% |
| Cell 15 | 0 | 0.0% | 0 | 0.0% | 0 | 0.0% |
| Cell 16 | 15 | 2.0% | 31 | 4.0% | 31 | 3.5% |
| Cell 17 | 80 | 10.5% | 95 | 12.2% | 84 | 9.6% |
| Cell 18 | 67 | 8.8% | 62 | 7.9% | 95 | 10.8% |
| Cell 19 ² | --- | --- | --- | --- | 0 | --- |
| Cell 20 ² | --- | --- | --- | --- | 0 | --- |
| Cell Not Available | 1 | 0.1% | 7 | 0.9% | 3 | 0.3% |
| TOTAL | 762 | 100.0% | 781 | 100.0% | 878 | 100.0% |

¹Commitment classification score is calculated during assessment at time of commitment.

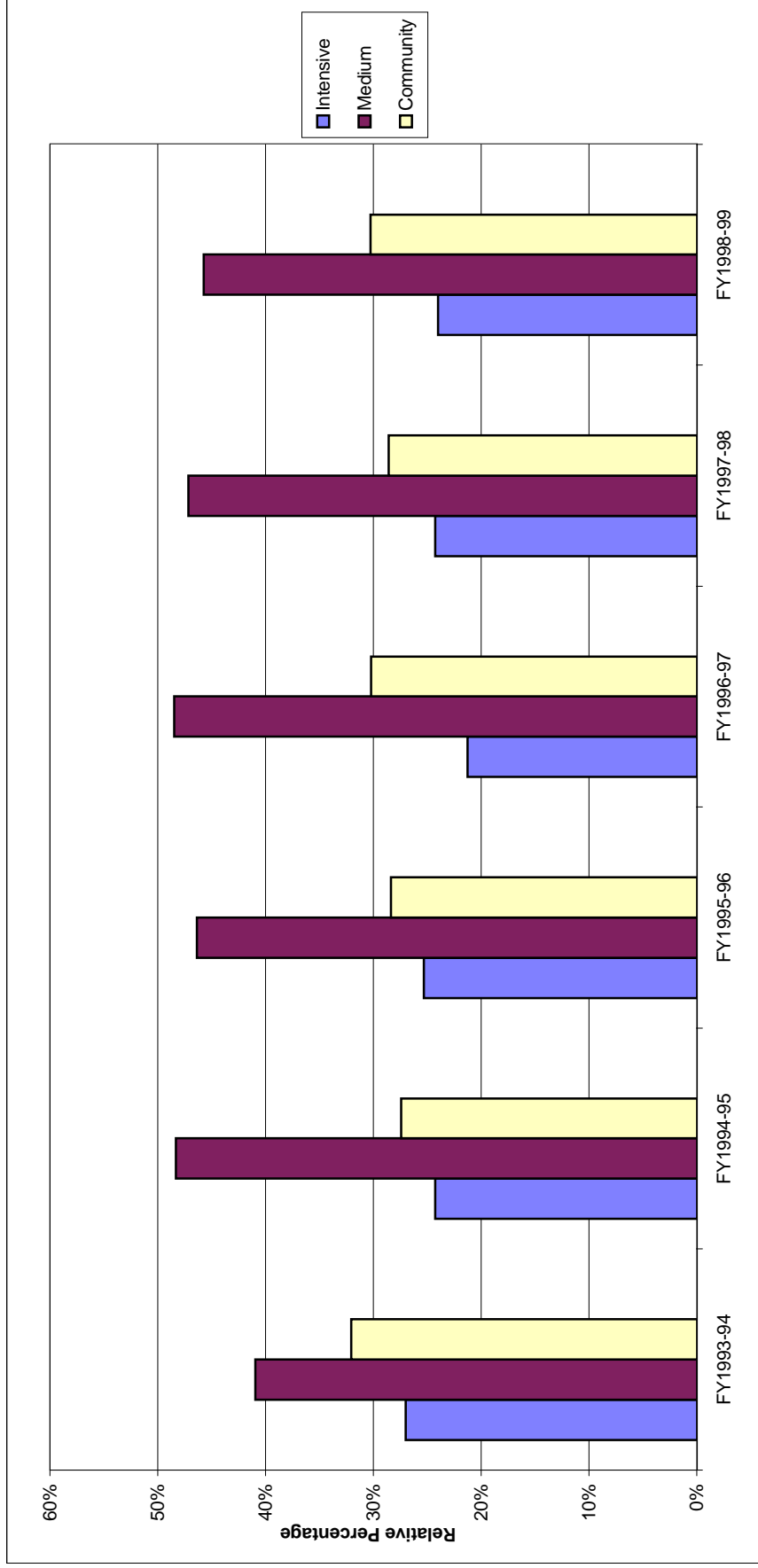
The commitment classification methodology is being reexamined.

²Scoring of the classification grid does not allow youth to fall into this cell.

Offense Severity Score



**DIVISION OF YOUTH CORRECTIONS
CLASSIFICATION TRENDS OF NEW COMMITMENTS
FY1993-94 thru 1998-99**



NOTE: Fiscal year totals might not match what is reported elsewhere in this manual since classification data was not yet available on all new commitments at the time these data were prepared.

DIVISION OF YOUTH CORRECTIONS

**PAROLE
POPULATION TRENDS**

FY 1996-97 through FY 1998-99

| | FY 1996-97 | | | FY 1997-98 | | | FY 1998-99 | | |
|--------------------|--------------------------------|------------------|----------------------------|--------------------------------|------------------|----------------------------|--------------------------------|------------------|----------------------------|
| | No. of | | LOS ³ (mos.) | No. of | | LOS ³ (mos.) | No. of | | LOS ³ (mos.) |
| | Clients Served ¹ | ADC ² | | Clients Served ¹ | ADC ² | | Clients Served ¹ | ADC ² | |
| REGION | | | | | | | | | |
| Southern | 135 | 50.4 | 8.4 | 152 | 57.8 | 6.7 | 220 | 91.1 | 8.6 |
| Western | 88 | 30.4 | 7.2 | 118 | 37.3 | 6.3 | 157 | 69.9 | 8.9 |
| Denver | 148 | 50.0 | 6.8 | 146 | 50.4 | 6.6 | 152 | 55.7 | 7.9 |
| Central | 150 | 62.6 | 7.3 | 181 | 63.7 | 7.8 | 202 | 79.0 | 8.5 |
| Northeast | 68 | 23.2 | 7.6 | 128 | 45.9 | 6.4 | 181 | 70.5 | 7.4 |
| TOTAL ⁴ | 589 | 216.6 | 7.4 | 725 | 255.0 | 6.8 | 914 | 366.1 | 8.2 |

**PAROLE
POPULATION CHARACTERISTICS
FY1998-99**

| SEX: | ADC ² | % | AGE ⁵ : | ADC ² | % | PAROLE PLACEMENT TYPE: | | | |
|--|------------------|--------|--|---------------------|-------|------------------------|----------|-------|-----|
| | | | | | | ADC | % | LOS | |
| Male | 323.7 | 88.4% | 13 | 0.1 | 0.0% | | | | |
| Female | 42.4 | 11.6% | 14 | 1.9 | 0.5% | Nonresidential | 289.7 | 79.2% | 7.1 |
| | | | 15 | 8.2 | 2.2% | Residential | 28.0 | 7.6% | 1.6 |
| TOTAL | 366.1 | 100.0% | 16 | 34.7 | 9.5% | Custody | 41.1 | 11.2% | 1.9 |
| | | | 17 | 71.8 | 19.6% | Other | 7.0 | 1.9% | 2.2 |
| | | | 18 | 108.5 | 29.6% | | | | |
| ETHNICITY: | | | 19 | 113.6 | 31.0% | | | | |
| Anglo-American | 185.3 | 50.6% | 20 | 26.6 | 7.3% | | | | |
| African-American | 56.6 | 15.5% | 21 | 0.8 | 0.2% | | | | |
| Hispanic/Latino | 116.5 | 31.8% | | | | | | | |
| Native-American | 1.1 | 0.3% | | | | | | | |
| Asian-American | 2.9 | 0.8% | | | | | | | |
| Other | 3.7 | 1.0% | | | | | | | |
| | | | Average Age of Youth on Parole ⁵ : 18.4 years | | | | | | |
| | | | ORIGINAL SENTENCE TYPE⁷: | | | ADC² | % | | |
| JOB/SCHOOL STATUS AT TIME OF DISCHARGE⁶: | | | | Non-Mandatory | | 228.4 | 62.4% | | |
| | | N | % | Mandatory | | 110.6 | 30.2% | | |
| Working or in School | | 263 | 80.7% | Repeat | | 25.4 | 6.9% | | |
| Unemployed and not in School | | 63 | 19.3% | Violent | | 1.1 | 0.3% | | |
| TOTAL DISCHARGED | | 326 | 100.0% | Aggravated Juvenile | | 0.6 | 0.2% | | |
| | | | | Adult | | 0.0 | 0.0% | | |

¹Clients served counts are unduplicated.

²Average Daily Caseload (ADC) is the average number of youth on parole active status during the time period. This includes youth under parole supervision as part of the Interstate Compact on Juveniles (ICJ). Youth on parole who were on escape status during the time period are not included.

³Parole length of stay is defined in the *Glossary of Terms* on page ii.

⁴Interstate Compact is included in total clients served. Total clients served may not equal the sum of the five regions since youth may be served in more than one region.

⁵Calculated based on age of youth on the last day of fiscal year.

⁶Includes only youth who were on parole at time of discharge. Captures job/School status on day of discharge.

⁷This represents sentence type at time of original commitment only. If youth were recommitted, sentence type would likely change.

DIVISION OF YOUTH CORRECTIONS
COLORADO JUVENILE COMMITMENT RATE
BY COUNTY¹
FY1996-97 thru FY1998-99

| County of Commitment | Juvenile Population Age 10-17 yrs.² | Number of New Commitments FY 1998-99³ | Number Juvenile Commitments Per 100,000 Juvenile Population | | |
|---------------------------------|---|---|--|--------------------------|--------------------------|
| | | | <u>FY 1996-97</u> | <u>FY 1997-98</u> | <u>FY 1998-99</u> |
| Adams | 41,130 | 74 | 132 | 114 | 180 |
| Arapahoe | 55,883 | 72 | 88 | 110 | 129 |
| Boulder | 29,527 | 15 | 61 | 97 | 51 |
| Denver | 52,834 | 200 | 285 | 281 | 379 |
| Douglas | 18,173 | 13 | 32 | 76 | 72 |
| El Paso | 57,367 | 114 | 159 | 180 | 199 |
| Jefferson | 58,963 | 91 | 163 | 158 | 154 |
| Larimer | 26,969 | 33 | 170 | 140 | 122 |
| Mesa | 13,647 | 36 | 384 | 403 | 264 |
| Pueblo | 15,652 | 21 | 209 | 165 | 134 |
| Weld | 19,735 | 53 | 181 | 169 | 269 |
| TOTAL | 471,949 | 781 | 174 | 168 | 165 |

¹Only counties with juvenile populations over 9,000 are included.

²Population figures for ages 10 through 17 are estimates derived from 1990 intercensus population estimates, Colorado Department of Local Affairs. Estimates are for calendar year 1999.

³Number represents the number of NEW commitments from that county.

DIVISION OF YOUTH CORRECTIONS

**COMMITTED YOUTH
DEMOGRAPHIC TRENDS
FY 1996-96 through FY 1998-99**

| | FY 1996-97 | | | | FY 1997-98 | | | | FY 1998-99 | | | |
|---|-----------------------------------|--------|-------|-----------------------|-----------------------------------|--------|-------|-----------------------|-----------------------------------|--------|---------|-----------------------|
| | No. of New Commit- ments | % | ADP | Res. LOS (Mos.) | No. of New Commit- ments | % | ADP | Res. LOS (Mos.) | No. of New Commit- ments | % | ADP | Res. LOS (Mos.) |
| SEX | | | | | | | | | | | | |
| Male | 693 | 90.9% | 871.2 | 14.9 | 678 | 86.8% | 891.0 | 15.3 | 769 | 87.6% | 992.6 | 16.0 |
| Female | 69 | 9.1% | 57.3 | 10.5 | 103 | 13.2% | 82.1 | 12.9 | 109 | 12.4% | 119.6 | 12.7 |
| TOTAL | 762 | 100.0% | 928.4 | 14.5 | 781 | 100.0% | 973.1 | 15.1 | 878 | 100.0% | 1,112.2 | 15.6 |
| ETHNICITY | | | | | | | | | | | | |
| Anglo-American | 358 | 47.0% | 435.2 | 13.9 | 396 | 50.7% | 478.4 | 14.8 | 410 | 46.7% | 541.0 | 15.7 |
| African-American | 105 | 13.8% | 134.1 | 15.8 | 122 | 15.6% | 148.1 | 16.8 | 144 | 16.4% | 188.0 | 16.4 |
| Hispanic/Latino | 279 | 36.6% | 329.9 | 14.7 | 238 | 30.5% | 318.5 | 14.9 | 297 | 33.8% | 347.7 | 15.2 |
| Native American | 6 | 0.8% | 5.3 | 12.2 | 9 | 1.2% | 10.8 | 12.8 | 14 | 1.6% | 12.5 | 13.7 |
| Asian-American | 3 | 0.4% | 5.3 | 14.3 | 8 | 1.0% | 6.2 | 12.1 | 4 | 0.5% | 8.3 | 13.8 |
| Other | 11 | 1.4% | 18.7 | 17.5 | 8 | 1.0% | 11.1 | 14.9 | 9 | 1.0% | 14.7 | 16.5 |
| AGE¹ | | | | | | | | | | | | |
| 12 Years | 6 | 0.8% | 0.9 | 15.0 | 6 | 0.8% | 0.3 | 23.7 | 3 | 0.3% | 0.4 | 18.7 |
| 13 Years | 31 | 4.1% | 6.4 | 17.0 | 28 | 3.6% | 4.6 | 18.1 | 37 | 4.2% | 9.4 | 20.6 |
| 14 Years | 81 | 10.6% | 32.1 | 19.5 | 80 | 10.2% | 28.2 | 16.8 | 84 | 9.6% | 35.7 | 19.3 |
| 15 Years | 156 | 20.5% | 85.9 | 15.6 | 171 | 21.9% | 93.5 | 16.4 | 174 | 19.8% | 94.5 | 17.1 |
| 16 Years | 224 | 29.4% | 189.1 | 13.9 | 224 | 28.7% | 175.9 | 14.7 | 266 | 30.3% | 210.1 | 15.3 |
| 17 Years | 239 | 31.4% | 261.6 | 12.4 | 242 | 31.0% | 267.4 | 13.4 | 278 | 31.7% | 313.2 | 13.4 |
| 18 Years | 22 | 2.9% | 241.8 | 13.0 | 27 | 3.5% | 273.5 | 12.7 | 32 | 3.6% | 305.7 | 12.7 |
| 19 Years | 2 | 0.3% | 86.9 | 0.0 | 3 | 0.4% | 115.1 | 6.7 | 3 | 0.3% | 116.5 | 11.1 |
| 20 Years | 1 | 0.1% | 23.0 | 0.0 | 0 | 0.0% | 12.5 | 9.4 | 1 | 0.1% | 24.7 | 5.1 |
| 21 Years | 0 | 0.0% | 0.8 | 0.0 | 0 | 0.0% | 2.1 | 0.0 | 0 | 0.0% | 2.1 | 0.0 |
| Average Age at Commitment:² | | | | | | | | | | | | |
| | 16.3 Years | | | | 16.4 Years | | | | 16.4 Years | | | |

¹Actual counts and LOS for each age category correspond to age at commitment. ADP figures for each age category, however, are based on the youth's age on the last day of the fiscal year. **Note:** House Bill 96-1005 passed during FY1996-97 allows for commitment of ten year olds. There were no 10 or 11 year olds committed during FY1996-97 thru FY1998-99.

²Average age at commitment for the three years shown above have been recalculated and is slightly higher than previously reported. In prior years these calculations were based on discrete (e.g., 16 years) values for age and are now based on continuous (e.g., 16.487 years) values.

**DIVISION OF YOUTH CORRECTIONS
COMMITMENT POPULATION CHARACTERISTICS BY GENDER
FY1997-98 AND FY1998-99**

| | MALES | | | | FEMALES | | | |
|--|------------------|----------|------------------|----------|------------------|----------|------------------|----------|
| | FY1997-98 | | FY1998-99 | | FY1997-98 | | FY1998-99 | |
| | n | % | n | % | n | % | n | % |
| DEMOGRAPHIC DATA¹ | | | | | | | | |
| Ethnicity | | | | | | | | |
| Anglo-American: | 339 | 50.0% | 343 | 44.6% | 57 | 55.3% | 67 | 61.5% |
| African-American: | 110 | 16.2% | 136 | 17.7% | 12 | 11.7% | 8 | 7.3% |
| Hispanic/Latino: | 207 | 30.5% | 265 | 34.5% | 31 | 30.1% | 32 | 29.4% |
| Native American: | 8 | 1.2% | 12 | 1.6% | 1 | 1.0% | 2 | 1.8% |
| Asian-American: | 7 | 1.0% | 4 | 0.5% | 1 | 1.0% | 0 | 0.0% |
| Other: | 7 | 1.0% | 9 | 1.2% | 1 | 1.0% | 0 | 0.0% |
| TOTAL NEW COMMITMENTS | 678 | 100.0% | 769 | 100.0% | 103 | 100.0% | 109 | 100.0% |
| Age ² | | | | | | | | |
| 12 Years | 6 | 0.9% | 2 | 0.3% | 0 | 0.0% | 1 | 0.9% |
| 13 Years | 21 | 3.1% | 32 | 4.2% | 7 | 6.8% | 5 | 4.6% |
| 14 Years | 67 | 9.9% | 67 | 8.7% | 13 | 12.6% | 17 | 15.6% |
| 15 Years | 148 | 21.8% | 153 | 19.9% | 23 | 22.3% | 21 | 19.3% |
| 16 Years | 190 | 28.0% | 233 | 30.3% | 34 | 33.0% | 33 | 30.3% |
| 17 Years | 220 | 32.4% | 251 | 32.6% | 22 | 21.4% | 27 | 24.8% |
| 18 Years | 23 | 3.4% | 27 | 3.5% | 4 | 3.9% | 5 | 4.6% |
| 19 Years | 3 | 0.4% | 3 | 0.4% | 0 | 0.0% | 0 | 0.0% |
| 20 Years | 0 | 0.0% | 1 | 0.1% | 0 | 0.0% | 0 | 0.0% |
| 21 Years | 0 | 0.0% | 0 | 0.0% | 0 | 0.0% | 0 | 0.0% |
| Average Age at Commitment ³ : | 16.4 Yrs. | | 16.4 Yrs. | | 16.2 Yrs. | | 16.1 Yrs. | |
| NEW COMMITMENT PROFILE | | | | | | | | |
| Prior Adjudications | | | | | | | | |
| None: | 136 | 20.1% | 166 | 21.6% | 41 | 39.8% | 47 | 43.1% |
| One: | 207 | 30.5% | 204 | 26.5% | 37 | 35.9% | 25 | 22.9% |
| Two or more: | 335 | 49.4% | 399 | 51.9% | 25 | 24.3% | 37 | 33.9% |
| Prior Out-of-Home Placements | | | | | | | | |
| None: | 163 | 24.0% | 168 | 21.8% | 16 | 15.5% | 12 | 11.0% |
| One: | 133 | 19.6% | 160 | 20.8% | 18 | 17.5% | 15 | 13.8% |
| Two or more: | 382 | 56.3% | 441 | 57.3% | 69 | 67.0% | 82 | 75.2% |
| Runaway History ⁴ | | | | | | | | |
| No runaway history: | 267 | 39.4% | 315 | 41.0% | 19 | 18.4% | 18 | 16.5% |
| Runaway history: | 409 | 60.3% | 452 | 58.8% | 83 | 80.6% | 91 | 83.5% |
| Missing Data: | 2 | 0.3% | 2 | 0.3% | 1 | 1.0% | 0 | 0.0% |
| Assessed Substance Abuse Counseling Needs ⁵ | | | | | | | | |
| Prevention: | 101 | 14.9% | 113 | 14.7% | 11 | 10.7% | 11 | 10.1% |
| Intervention: | 180 | 26.5% | 231 | 30.0% | 26 | 25.2% | 22 | 20.2% |
| Treatment: | 390 | 57.5% | 422 | 54.9% | 65 | 63.1% | 76 | 69.7% |
| Missing Data: | 7 | 1.0% | 3 | 0.4% | 1 | 1.0% | 0 | 0.0% |
| Average Age at First Adjudication: | 14.2 Yrs. | | 14.1 Yrs. | | 14.3 Yrs. | | 14.4 Yrs. | |
| POPULATION DATA | | | | | | | | |
| Average Daily Population | | | | | | | | |
| Assessment: | 43.6 | | 65.2 | | 6.35 | | 9.34 | |
| Orientation: | 72.7 | | 66.0 | | N/A | | N/A | |
| Commitment Secure/Staff Secure: | 615.7 | | 683.3 | | 61.9 | | 85.1 | |
| Community Residential: | 159.0 | | 177.7 | | 14.0 | | 25.0 | |
| Residential: | 891.0 | | 992.2 | | 82.2 | | 119.5 | |
| Parole ⁶ : | 224.8 | | 323.7 | | 30.2 | | 42.4 | |

¹Data are based on NEW commitments.

²House Bill 96-1005 passed during FY1996-97 allows for commitment of ten year olds. There were no 10 or 11 year olds committed during FY1997-98 thru FY1998-99.

³Average age at commitment for the two years shown above have been recalculated and is slightly higher than previously reported. In prior years these calculations were based on discrete (e.g., 16 years) values for age and are now based on continuous (e.g., 16.487 years) values.

⁴Refers to running away from a secure or nonsecure placement as well as from home during the 12 months prior to commitment.

⁵Substance abuse history and treatment needs are assessed within one month of commitment. Youth with minimal substance abuse history and/or treatment needs are identified for *prevention* services whereas those reporting the greatest history of abuse and treatment needs are targeted for substance abuse *treatment* services.

⁶Only youth actively on parole are included in ADP calculations; youth who were on escape status during the time period are excluded.

**DIVISION OF YOUTH CORRECTIONS
COMMITMENT POPULATION CHARACTERISTICS BY GENDER
FY1997-98 AND FY1998-99**

| | MALES | | | | FEMALES | | | |
|------------------------------------|------------------|-------------|------------------|-------------|------------------|-------------|------------------|-------------|
| | FY1997-98 | | FY1998-99 | | FY1997-98 | | FY1998-99 | |
| | n | % | n | % | n | % | n | % |
| COMMITMENT DATA¹ | | | | | | | | |
| Offense Type | | | | | | | | |
| Person Felony: | 155 | 22.9% | 153 | 19.9% | 22 | 21.4% | 13 | 11.9% |
| Person Misdemeanor: | 94 | 13.9% | 141 | 18.3% | 17 | 16.5% | 30 | 27.5% |
| Property Felony: | 285 | 42.0% | 264 | 34.3% | 32 | 31.1% | 28 | 25.7% |
| Property Misdemeanor: | 50 | 7.4% | 63 | 8.2% | 15 | 14.6% | 21 | 19.3% |
| Drug Felony: | 41 | 6.0% | 59 | 7.7% | 3 | 2.9% | 5 | 4.6% |
| Drug Misdemeanor: | 1 | 0.1% | 3 | 0.4% | 0 | 0.0% | 1 | 0.9% |
| Weapons Felony: | 8 | 1.2% | 10 | 1.3% | 0 | 0.0% | 1 | 0.9% |
| Weapons Misdemeanor: | 15 | 2.2% | 26 | 3.4% | 3 | 2.9% | 0 | 0.0% |
| Other: | 25 | 3.7% | 48 | 6.2% | 10 | 9.7% | 9 | 8.3% |
| Missing Data: | <u>4</u> | <u>0.6%</u> | <u>2</u> | <u>0.3%</u> | <u>1</u> | <u>1.0%</u> | <u>1</u> | <u>0.9%</u> |
| TOTAL NEW COMMITMENTS | 678 | 100.0% | 769 | 100.0% | 103 | 100.0% | 109 | 100.0% |
| Commitment Sentence Type | | | | | | | | |
| Non-Mandatory: | 368 | 54.3% | 366 | 47.6% | 70 | 68.0% | 70 | 64.2% |
| Mandatory: | 243 | 35.8% | 305 | 39.7% | 26 | 25.2% | 31 | 28.4% |
| Repeat: | 54 | 8.0% | 78 | 10.1% | 6 | 5.8% | 6 | 5.5% |
| Violent: | 6 | 0.9% | 9 | 1.2% | 0 | 0.0% | 2 | 1.8% |
| Aggravated Juvenile: | 7 | 1.0% | 11 | 1.4% | 1 | 1.0% | 0 | 0.0% |
| Adult: | 0 | 0.0% | 0 | 0.0% | 0 | 0.0% | 0 | 0.0% |
| Missing Data: | 0 | 0.0% | 0 | 0.0% | 0 | 0.0% | 0 | 0.0% |
| New Commitment Classification | | | | | | | | |
| Intensive: | 167 | 24.6% | 192 | 25.0% | 21 | 20.4% | 18 | 16.5% |
| Medium: | 318 | 46.9% | 346 | 45.0% | 49 | 47.6% | 54 | 49.5% |
| Community: | 189 | 27.9% | 228 | 29.6% | 32 | 31.1% | 37 | 33.9% |
| Missing Data: | 4 | 0.6% | 3 | 0.4% | 1 | 1.0% | 0 | 0.0% |
| Commitment Type | | | | | | | | |
| New Commitment: | 678 | 80.8% | 769 | 82.1% | 103 | 85.8% | 109 | 83.8% |
| Concurrent: | 145 | 17.3% | 143 | 15.3% | 15 | 12.5% | 18 | 13.8% |
| Consecutive: | <u>16</u> | <u>1.9%</u> | <u>25</u> | <u>2.7%</u> | <u>2</u> | <u>1.7%</u> | <u>3</u> | <u>2.3%</u> |
| TOTAL COMMITMENTS | 839 | 100.0% | 937 | 100.0% | 120 | 100.0% | 130 | 100.0% |
| DISCHARGE DATA² | | | | | | | | |
| Average Age at Discharge | 18.2 Yrs. | | 18.4 Yrs. | | 17.8 Yrs. | | 18.0 Yrs. | |
| Average LOS (months) | | | | | | | | |
| Commitment Secure/Staff Secure: | 11.5 | | 12.0 | | 8.8 | | 8.7 | |
| Community Residential: | 5.2 | | 5.2 | | 5.4 | | 5.1 | |
| Total Residential: | 15.3 | | 16.0 | | 12.9 | | 12.7 | |
| Parole: | 6.8 | | 8.1 | | 6.8 | | 9.4 | |
| Total Commitment: | 22.1 | | 23.8 | | 21.3 | | 22.4 | |
| | n | % | n | % | n | % | n | % |
| Job/School Status at Discharge | | | | | | | | |
| Unemployed and not in school: | 256 | 40.9% | 194 | 36.7% | 12 | 21.1% | 16 | 27.1% |
| Working or in school: | 366 | 58.5% | 331 | 62.6% | 45 | 78.9% | 43 | 72.9% |
| Missing Data: | <u>4</u> | <u>0.6%</u> | <u>4</u> | <u>0.8%</u> | <u>0</u> | <u>0.0%</u> | <u>0</u> | <u>0.0%</u> |
| TOTAL DISCHARGED | 626 | 100.0% | 529 | 100.0% | 57 | 100.0% | 59 | 100.0% |

¹Data are based on NEW commitments.

²Data are based on all youth discharged during the fiscal year.



SECTION III

DETENTION POPULATION TRENDS
AND CHARACTERISTICS

DIVISION OF YOUTH CORRECTIONS

**DETAINED YOUTH
POPULATION TRENDS¹**

FY 1988-89 through FY 1998-99

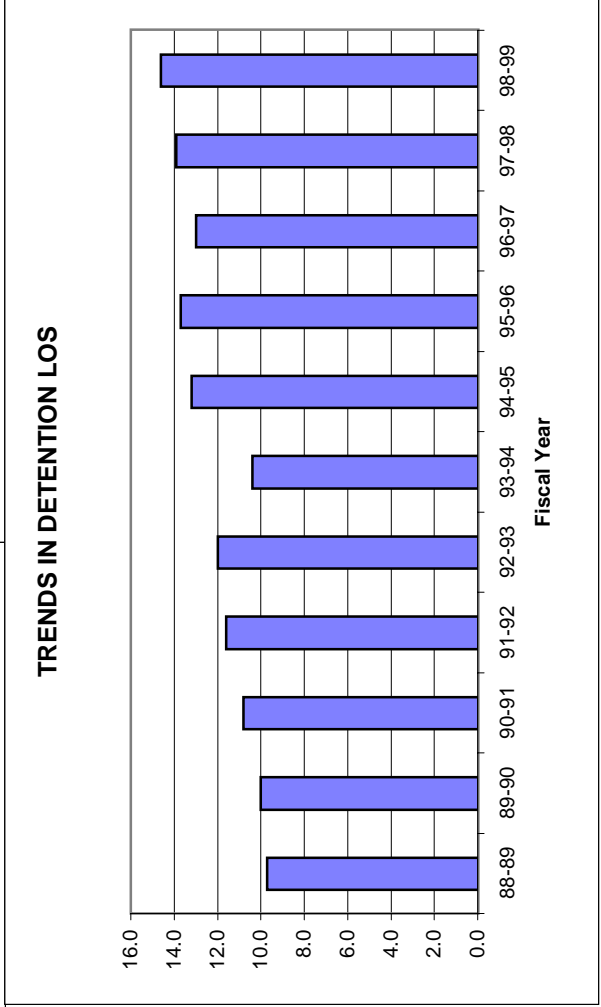
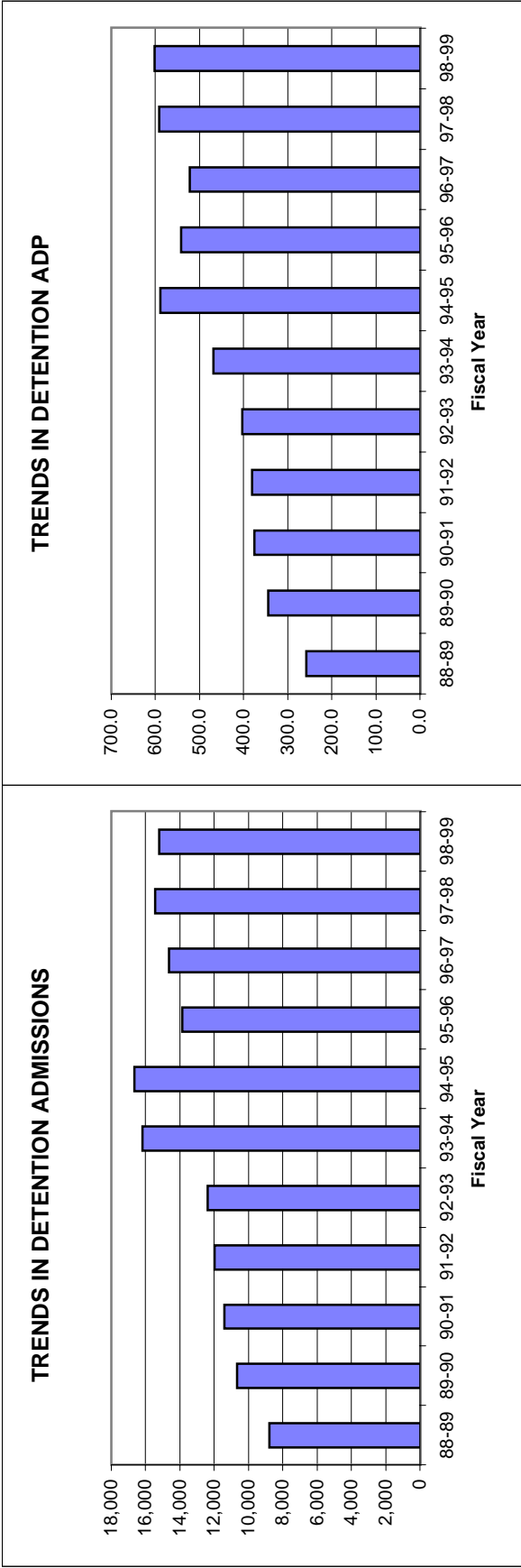
| Fiscal Year | Number of Clients Served² | Percentage Change +/- | No. of New Admissions | Percentage Change +/- | ADP | Percentage Change +/- | LOS (days) | Percentage Change +/- |
|----------------------|---|----------------------------------|----------------------------------|----------------------------------|------------|----------------------------------|-----------------------|----------------------------------|
| 1988-89 | N/A | | 8,791 | | 257.8 | | 9.7 | |
| 1989-90 | 5,394 | | 10,669 | 21.4% | 344.5 | 33.6% | 10.0 | 3.1% |
| 1990-91 | 5,920 | 9.8% | 11,402 | 6.9% | 375.0 | 8.9% | 10.8 | 8.0% |
| 1991-92 | 6,548 | 10.6% | 11,988 | 5.1% | 380.6 | 1.5% | 11.6 | 7.4% |
| 1992-93 | 6,820 | 4.2% | 12,388 | 3.3% | 403.2 | 5.9% | 12.0 | 3.4% |
| 1993-94 | 7,800 | 14.4% | 16,197 | 30.7% | 467.8 | 16.0% | 10.4 | -13.3% |
| 1994-95 | 8,807 | 12.9% | 16,638 | 2.7% | 589.0 | 25.9% | 13.2 | 26.9% |
| 1995-96 ³ | 7,870 | -10.6% | 13,852 | -16.7% | 541.5 | -8.1% | 13.7 | 3.8% |
| 1996-97 | 8,303 | 5.5% | 14,652 | 5.8% | 522.5 | -3.5% | 13.0 | -5.1% |
| 1997-98 | 8,785 | 5.8% | 15,428 | 5.3% | 591.8 | 13.3% | 13.9 | 7.2% |
| 1998-99 | 8,924 | 1.6% | 15,212 | -1.4% | 602.4 | 1.8% | 14.6 | 4.5% |

¹Contracted holding facilities are used in detention totals.

²Clients served counts are unduplicated. Figures not available prior to FY1989-90.

³A cap imposed on Gilliam YSC by the Federal Court in FY1995-96 resulted in decreased detention admissions and ADP.

DIVISION OF YOUTH CORRECTIONS
Trends in Detention Populations
FY1988-89 thru FY1998-99



DIVISION OF YOUTH CORRECTIONS

DETENTION POPULATION TRENDS BY PROGRAM TYPE

FY 1996-97 through FY 1998-99

| | FY 1996-97 | | | FY 1997-98 | | | FY 1998-99 | | |
|--------------------------------|-----------------------------|---------------|--------------|-----------------------------|---------------|--------------|-----------------------------|---------------|--------------|
| | Clients Served ¹ | Adm | LOS (days) | Clients Served ¹ | Adm | LOS (days) | Clients Served ¹ | Adm | LOS (days) |
| Secure Detention | | | | | | | | | |
| State Operated: | | | | | | | | | |
| Adams YSC | 1,139 | 1,500 | 50.4 | 881 | 1,049 | 37.4 | 564 | 713 | 32.6 |
| Gilliam YSC | 1,305 | 1,723 | 69.0 | 1,448 | 1,904 | 65.7 | 1,573 | 2,057 | 68.4 |
| Grand Mesa YSC | 487 | 664 | 32.1 | 518 | 669 | 30.7 | 512 | 680 | 31.5 |
| Marvin Foote YSC ² | 443 | 559 | 20.1 | 1,511 | 1,992 | 97.9 | 1,377 | 1,857 | 67.7 |
| Mount View YSC | 2,807 | 4,213 | 140.1 | 1,717 | 2,316 | 84.3 | 1,433 | 1,901 | 85.7 |
| Platte Valley YSC ³ | N/A | N/A | N/A | 709 | 1,161 | 30.7 | 1,112 | 1,971 | 63.6 |
| Pueblo YSC | 915 | 1,371 | 45.5 | 890 | 1,311 | 45.2 | 807 | 1,169 | 41.4 |
| Spring Creek YSC ⁴ | N/A | N/A | N/A | 647 | 901 | 20.4 | 1,524 | 2,295 | 78.7 |
| Zeb Pike ⁵ | 1,182 | 1,783 | 39.2 | 970 | 1,447 | 38.4 | 0 | 0 | 0.0 |
| State Total | 7,104 | 11,813 | 396.4 | 7,642 | 12,750 | 450.7 | 7,823 | 12,643 | 469.5 |
| Contracted | | | | | | | | | |
| Staff Secure | 1,963 | 2,408 | 59.1 | 1,841 | 2,227 | 63.2 | 1,836 | 2,124 | 64.3 |
| Boot Camp | 482 | 431 | 67.0 | 518 | 451 | 77.9 | 523 | 445 | 68.6 |
| Contracted Total | NA | 2,839 | 126.1 | NA | 2,678 | 141.1 | NA | 2,569 | 133.0 |
| Total Detention | 8,303 | 14,652 | 522.5 | 8,785 | 15,428 | 591.8 | 8,924 | 15,212 | 602.4 |

¹Clients served counts are unduplicated.

²Marvin Foote YSC began accepting youth in April 1997.

³Platte Valley YSC began accepting youth in November, 1997.

⁴Spring Creek YSC began accepting youth in February, 1998.

⁵Zeb Pike YSC was converted from a detention to a commitment facility in July, 1998.

DIVISION OF YOUTH CORRECTIONS
COLORADO JUVENILE DETENTION RATES
BY COUNTY¹
FY1996-97 thru FY1998-99

| County of Offense | Juvenile Population Age 10-17 yrs.² | Number Juvenile Admissions FY 1998-99 | Number Juvenile Admissions Per 100,000 Juvenile Population | | |
|------------------------------|---|--|---|--------------------------|--------------------------|
| | | | <u>FY 1996-97</u> | <u>FY 1997-98</u> | <u>FY 1998-99</u> |
| Adams | 41,130 | 809 | 2,475 | 2,189 | 1,967 |
| Arapahoe | 55,883 | 1,564 | 2,379 | 2,833 | 2,799 |
| Boulder | 29,527 | 872 | 2,408 | 3,027 | 2,953 |
| Denver | 52,834 | 3,529 | 6,689 | 7,172 | 6,679 |
| Douglas | 18,173 | 216 | 1,264 | 1,288 | 1,189 |
| El Paso | 57,367 | 2,054 | 3,505 | 3,771 | 3,580 |
| Jefferson | 58,963 | 1,791 | 3,001 | 3,033 | 3,037 |
| Larimer | 26,969 | 539 | 1,710 | 1,720 | 1,999 |
| Mesa | 13,647 | 470 | 3,072 | 3,497 | 3,444 |
| Pueblo | 15,652 | 964 | 5,670 | 6,370 | 6,159 |
| Weld | 19,735 | 677 | 2,718 | 2,716 | 3,430 |
| TOTAL | 471,949 | 15,212 | 3,688 | 3,346 | 3,223 |

¹Only counties with juvenile populations over 9,000 are included.

²Population figures for ages 10 through 17 are derived from the 1990 intercensus estimates, Colorado Division of Local Government. Estimates are for calendar year 1999.

DIVISION OF YOUTH CORRECTIONS

**DETENTION
DEMOGRAPHIC TRENDS¹**

FY 1996-97 through FY 1998-99

| | FY 1996-97 | | | | FY 1997-98 | | | | FY 1998-99 | | | |
|---------------------------------|-----------------------|--------|-------|------------|-----------------------|--------|-------|------------|-----------------------|--------|-------|------------|
| | No. of New Admissions | % | ADP | LOS (days) | No. of New Admissions | % | ADP | LOS (days) | No. of New Admissions | % | ADP | LOS (days) |
| SEX | | | | | | | | | | | | |
| Male | 11,725 | 80.0% | 447.7 | 13.8 | 12,041 | 78.0% | 496.7 | 15.1 | 11,657 | 76.6% | 495.1 | 15.7 |
| Female | 2,927 | 20.0% | 74.9 | 9.7 | 3,387 | 22.0% | 95.1 | 9.7 | 3,555 | 23.4% | 107.4 | 10.8 |
| TOTAL | 14,652 | 100.0% | 522.6 | 13.0 | 15,428 | 100.0% | 591.8 | 13.9 | 15,212 | 100.0% | 602.4 | 14.6 |
| ETHNICITY | | | | | | | | | | | | |
| Anglo-American | 6,757 | 46.1% | 253.5 | 13.7 | 7,266 | 47.1% | 279.1 | 13.8 | 6,967 | 45.8% | 286.0 | 15.1 |
| African-American | 2,327 | 15.9% | 80.5 | 12.7 | 2,479 | 16.1% | 97.1 | 14.7 | 2,297 | 15.1% | 90.3 | 14.6 |
| Hispanic/Latino | 5,186 | 35.4% | 174.8 | 12.3 | 5,258 | 34.1% | 197.4 | 13.6 | 5,440 | 35.8% | 206.8 | 13.9 |
| Native American | 115 | 0.8% | 4.8 | 15.4 | 131 | 0.8% | 5.5 | 16.6 | 170 | 1.1% | 7.0 | 14.7 |
| Asian-American | 97 | 0.7% | 2.9 | 10.4 | 126 | 0.8% | 4.7 | 14.9 | 126 | 0.8% | 4.9 | 14.8 |
| Other | 170 | 1.2% | 6.2 | 13.7 | 168 | 1.1% | 8.0 | 16.9 | 212 | 1.4% | 7.4 | 12.7 |
| AGE AT ADMISSION | | | | | | | | | | | | |
| 10 Yrs. | 21 | 0.1% | 0.5 | 9.1 | 37 | 0.2% | 0.9 | 6.6 | 25 | 0.2% | 0.6 | 11.8 |
| 11 Yrs. | 70 | 0.5% | 1.8 | 9.5 | 79 | 0.5% | 1.2 | 5.6 | 90 | 0.6% | 2.5 | 9.3 |
| 12 Yrs. | 271 | 1.8% | 7.2 | 9.9 | 309 | 2.0% | 9.8 | 11.2 | 331 | 2.2% | 11.4 | 12.2 |
| 13 Yrs. | 900 | 6.1% | 28.6 | 11.3 | 967 | 6.3% | 33.3 | 12.2 | 1,046 | 6.9% | 38.3 | 13.6 |
| 14 Yrs. | 1,939 | 13.2% | 66.3 | 12.7 | 2,184 | 14.2% | 74.5 | 12.4 | 2,094 | 13.8% | 82.0 | 14.7 |
| 15 Yrs. | 3,261 | 22.3% | 117.0 | 13.4 | 3,301 | 21.4% | 126.8 | 13.9 | 3,299 | 21.7% | 135.6 | 15.2 |
| 16 Yrs. | 3,866 | 26.4% | 144.2 | 13.5 | 3,970 | 25.7% | 160.8 | 15.1 | 3,865 | 25.4% | 153.9 | 14.5 |
| 17 Yrs. | 4,061 | 27.7% | 141.7 | 12.5 | 4,257 | 27.6% | 165.7 | 13.9 | 4,195 | 27.6% | 162.3 | 14.2 |
| 18 Yrs. | 215 | 1.5% | 13.3 | 23.1 | 263 | 1.7% | 15.2 | 21.9 | 210 | 1.4% | 12.5 | 21.4 |
| 19 Yrs. | 39 | 0.3% | 1.6 | 18.1 | 56 | 0.4% | 3.1 | 18.0 | 51 | 0.3% | 3.3 | 26.7 |
| 20 Yrs. | 9 | 0.1% | 0.3 | 11.1 | 5 | 0.0% | 0.4 | 29.2 | 6 | 0.0% | 0.0 | 2.2 |
| Over 20 Yrs. | 0 | 0.0% | 0.0 | 0.0 | 0 | 0.0% | 0.0 | 0.0 | 0 | 0.0% | 0.0 | 0.0 |
| AVERAGE AGE¹: | 16.1 Yrs. | | | | 16.0 Yrs. | | | | 16.0 Yrs. | | | |

¹Average age at detention admission has been recalculated for the past three years and is slightly higher than figures reported in previous manuals. In prior years these calculations were based on discrete (e.g., 16 years) values for age and are now based on continuous (e.g., 16.487) values.

DIVISION OF YOUTH CORRECTIONS

DETENTION POPULATION BY CHARGE, REASON HELD, AND LEGAL STATUS

FY 1996-97 through FY 1998-99

| CHARGE | FY 1996-97 | | | | FY 1997-98 | | | | FY 1998-99 | | | |
|---------------------------------|-----------------------|-------------|--------------|-------------|-----------------------|-------------|--------------|-------------|-----------------------|-------------|--------------|-------------|
| | No. of New Admissions | % | ADP (days) | LOS | No. of New Admissions | % | ADP (days) | LOS | No. of New Admissions | % | ADP (days) | LOS |
| Court Order | 6,055 | 41.3% | 257.5 | 15.1 | 6,951 | 45.1% | 302.5 | 15.4 | 7,379 | 48.5% | 311.4 | 15.5 |
| Courtesy | 1,733 | 11.8% | 83.9 | 18.9 | 1,404 | 9.1% | 76.6 | 23.7 | 1,165 | 7.7% | 54.2 | 17.9 |
| Delinquent | 4,287 | 29.3% | 140.6 | 11.9 | 4,984 | 32.3% | 175.1 | 12.4 | 4,455 | 29.3% | 194.9 | 16.1 |
| Depend. Neglect | 18 | 0.1% | 0.4 | 9.6 | 19 | 0.1% | 0.1 | 2.3 | 21 | 0.1% | 0.5 | 9.3 |
| Drinking under Age | 14 | 0.1% | 0.2 | 4.2 | 11 | 0.1% | 0.1 | 4.5 | 6 | 0.0% | 0.1 | 5.6 |
| Game-Fish | 2 | 0.0% | 0.0 | 1.3 | 7 | 0.0% | 0.1 | 4.3 | 8 | 0.1% | 0.2 | 8.8 |
| Interrupted | 880 | 6.0% | 23.7 | 9.9 | 745 | 4.8% | 21.4 | 10.5 | 758 | 5.0% | 22.1 | 10.9 |
| Park-Municipal | 1,171 | 8.0% | 9.9 | 3.1 | 876 | 5.7% | 7.4 | 2.8 | 1,015 | 6.7% | 10.7 | 3.4 |
| Runaway | 214 | 1.5% | 3.6 | 6.0 | 172 | 1.1% | 5.6 | 9.5 | 193 | 1.3% | 4.7 | 8.6 |
| Traffic | 278 | 1.9% | 2.9 | 4.5 | 259 | 1.7% | 2.9 | 3.6 | 212 | 1.4% | 3.7 | 4.2 |
| TOTAL | 14,652 | 100% | 522.7 | 13.0 | 15,428 | 100% | 591.8 | 13.9 | 15,212 | 100% | 602.4 | 14.6 |
| REASON HELD | | | | | | | | | | | | |
| Court | 7,401 | 50.5% | 258.2 | 12.4 | 7,122 | 46.2% | 272.6 | 13.5 | 7,956 | 52.3% | 300.6 | 13.8 |
| DYC | 1,733 | 11.8% | 91.1 | 20.4 | 1,535 | 9.9% | 100.6 | 27.3 | 1,457 | 9.6% | 71.5 | 19.1 |
| Parole | 112 | 0.8% | 4.5 | 14.3 | 182 | 1.2% | 7.7 | 16.1 | 162 | 1.1% | 7.8 | 17.0 |
| Police | 3,768 | 25.7% | 116.2 | 11.3 | 4,635 | 30.0% | 146.2 | 11.1 | 3,595 | 23.6% | 135.5 | 13.8 |
| Probation | 1,300 | 8.9% | 47.9 | 13.3 | 1,667 | 10.8% | 58.8 | 12.4 | 1,748 | 11.5% | 81.3 | 16.8 |
| Situational | 189 | 1.3% | 1.9 | 3.5 | 153 | 1.0% | 2.3 | 2.7 | 125 | 0.8% | 1.5 | 3.4 |
| Social Services | 149 | 1.0% | 2.7 | 6.8 | 134 | 0.9% | 3.6 | 9.6 | 169 | 1.1% | 4.3 | 9.7 |
| LEGAL STATUS¹ | | | | | | | | | | | | |
| Preadjudicated | 10,814 | 73.8% | 328.8 | 10.9 | 10,920 | 70.8% | 342.8 | 9.8 | 10,496 | 69.0% | 386.9 | 11.3 |
| Boot Camp Sentence | 430 | 2.9% | 67.0 | 58.0 | 452 | 2.9% | 77.9 | 57.9 | 445 | 2.9% | 68.6 | 57.8 |
| (# of Comp. Sentences) | (362) | | | | (426) | | | | (372) | | | |
| Contempt Sentence | 420 | 2.9% | 5.8 | 5.2 | 167 | 1.1% | 2.5 | 5.8 | 237 | 1.6% | 4.8 | 7.1 |
| (# of Comp. Sentences) | (231) | | | | (142) | | | | (151) | | | |
| Delinquent Sentence | 56 | 0.4% | 1.1 | 8.4 | 97 | 0.6% | 2.5 | 8.5 | 194 | 1.3% | 6.4 | 10.5 |
| (# of Comp. Sentences) | (43) | | | | (83) | | | | (136) | | | |
| Game-Fish Sentence | 0 | 0.0% | 0.0 | 0.0 | 0 | 0.0% | 0.0 | 0.0 | 1 | 0.0% | 0.0 | 2.2 |
| (# of Comp. Sentences) | 0 | | | | 0 | | | | (1) | | | |
| Handgun Sentence | 34 | 0.2% | 0.8 | 6.2 | 18 | 0.1% | 0.2 | 7.3 | 22 | 0.1% | 0.3 | 5.7 |
| (# of Comp. Sentences) | (24) | | | | (10) | | | | (12) | | | |
| Municipal Sentence | 303 | 2.1% | 1.5 | 1.8 | 274 | 1.8% | 1.5 | 2.1 | 256 | 1.7% | 2.2 | 4.1 |
| (# of Comp. Sentences) | (292) | | | | (264) | | | | (232) | | | |
| Probation Sentence | 1,118 | 7.6% | 38.3 | 12.7 | 1,418 | 9.2% | 40.9 | 12.3 | 1,606 | 10.6% | 54.6 | 14.8 |
| (# of Comp. Sentences) | (762) | | | | (1,067) | | | | (1,031) | | | |
| Traffic Sentence | 43 | 0.3% | 1.5 | 12.1 | 23 | 0.1% | 0.6 | 11.9 | 28 | 0.2% | 0.5 | 7.4 |
| (# of Comp. Sentences) | (36) | | | | (22) | | | | (22) | | | |
| New Commitments | 0 | 0.0% | 0.0 | 0.0 | 835 | 5.4% | 40.6 | 43.6 | 1,050 | 6.9% | 2.5 | 27.7 |
| Return Commitments | 1,443 | 9.8% | 77.9 | 21.1 | 1,224 | 7.9% | 82.3 | 21.5 | 877 | 5.8% | 75.7 | 21.3 |

¹Legal status admission figures have been updated and are slightly different from prior years.

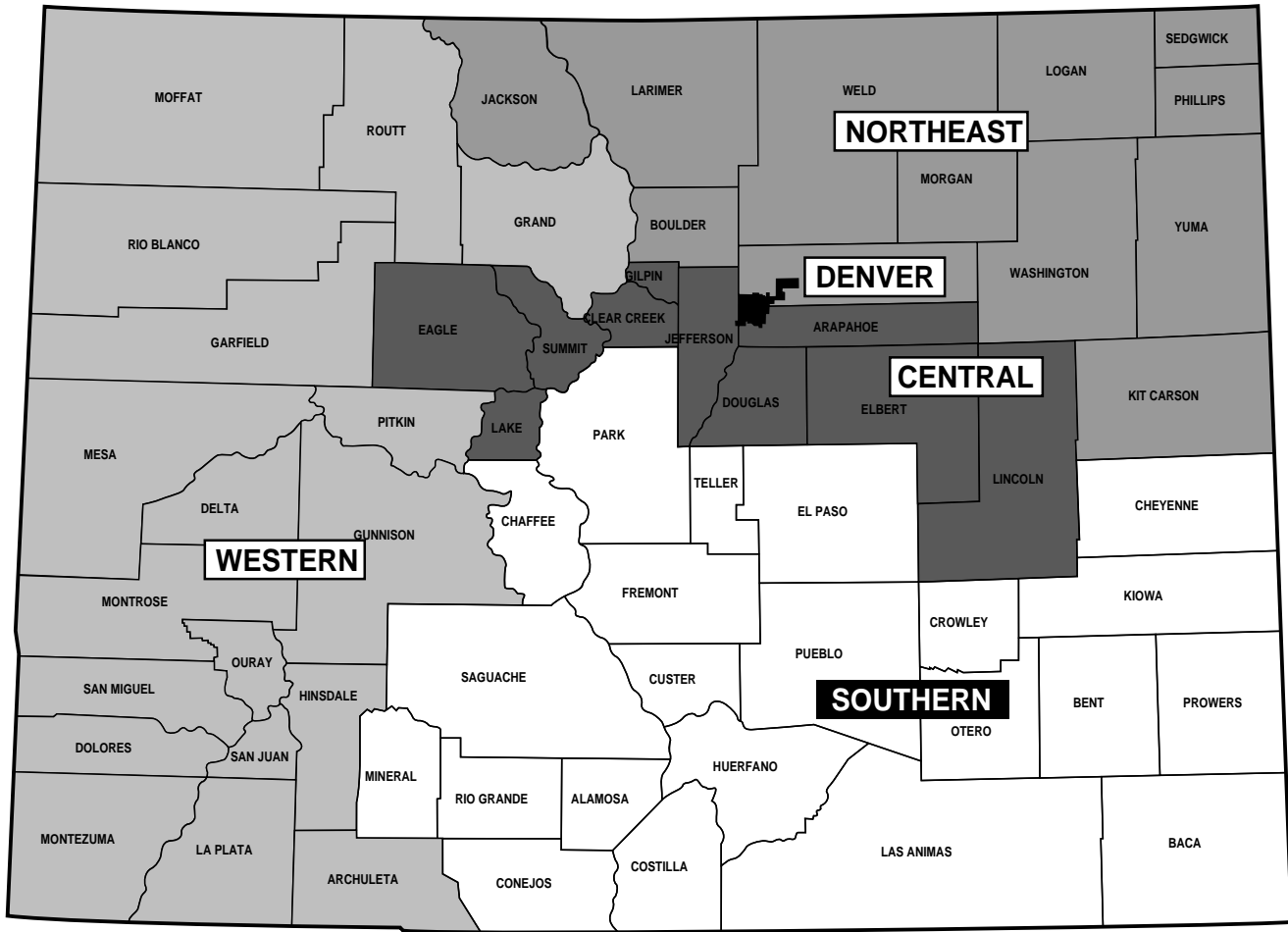
**DIVISION OF YOUTH CORRECTIONS
DETENTION POPULATION CHARACTERISTICS BY GENDER
FY1997-98 AND FY1998-99**

| | MALES | | | | FEMALES | | | |
|---|-----------|--------|-----------|--------|-----------|--------|-----------|--------|
| | FY1997-98 | | FY1998-99 | | FY1997-98 | | FY1998-99 | |
| | n | % | n | % | n | % | n | % |
| DEMOGRAPHIC DATA¹ | | | | | | | | |
| Ethnicity | | | | | | | | |
| Anglo-American: | 5,645 | 46.9% | 5,264 | 45.2% | 1,621 | 47.9% | 1,703 | 47.9% |
| African-American: | 1,958 | 16.3% | 1,823 | 15.6% | 521 | 15.4% | 474 | 13.3% |
| Hispanic/Latino: | 4,090 | 34.0% | 4,194 | 36.0% | 1,168 | 34.5% | 1,246 | 35.0% |
| Native American: | 95 | 0.8% | 128 | 1.1% | 36 | 1.1% | 42 | 1.2% |
| Asian-American: | 111 | 0.9% | 92 | 0.8% | 15 | 0.4% | 34 | 1.0% |
| Other: | 142 | 1.2% | 156 | 1.3% | 26 | 0.8% | 56 | 1.6% |
| TOTAL ADMISSIONS | 12,041 | 100.0% | 11,657 | 100.0% | 3,387 | 100.0% | 3,555 | 100.0% |
| Age | | | | | | | | |
| 10 Years | 36 | 0.3% | 22 | 0.2% | 1 | 0.0% | 3 | 0.1% |
| 11 Years | 69 | 0.6% | 77 | 0.7% | 10 | 0.3% | 13 | 0.4% |
| 12 Years | 241 | 2.0% | 243 | 2.1% | 68 | 2.0% | 88 | 2.5% |
| 13 Years | 656 | 5.4% | 739 | 6.3% | 311 | 9.2% | 307 | 8.6% |
| 14 Years | 1,596 | 13.3% | 1,503 | 12.9% | 588 | 17.4% | 591 | 16.6% |
| 15 Years | 2,458 | 20.4% | 2,375 | 20.4% | 843 | 24.9% | 924 | 26.0% |
| 16 Years | 3,150 | 26.2% | 3,021 | 25.9% | 820 | 24.2% | 844 | 23.7% |
| 17 Years | 3,533 | 29.3% | 3,440 | 29.5% | 724 | 21.4% | 755 | 21.2% |
| 18 Years | 247 | 2.1% | 184 | 1.6% | 16 | 0.5% | 26 | 0.7% |
| 19 Years | 51 | 0.4% | 47 | 0.4% | 5 | 0.1% | 4 | 0.1% |
| 20 Years | 4 | 0.0% | 6 | 0.1% | 1 | 0.0% | 0 | 0.0% |
| Average Age at Admission ² : | 16.1 Yrs. | | 16.1 Yrs. | | 15.8 Yrs. | | 15.8 Yrs. | |
| DETENTION DATA¹ | | | | | | | | |
| Number of Prior Admissions | | | | | | | | |
| None: | 3,937 | 32.7% | 3,978 | 34.1% | 1,427 | 42.1% | 1,403 | 39.5% |
| One: | 2,343 | 19.5% | 2,264 | 19.4% | 647 | 19.1% | 721 | 20.3% |
| Two or more: | 5,761 | 47.8% | 5,415 | 46.5% | 1,313 | 38.8% | 1,431 | 40.3% |
| Charge | | | | | | | | |
| Court Order: | 5,344 | 44.4% | 5,570 | 47.8% | 1,607 | 47.4% | 1,809 | 50.9% |
| Courtesy: | 1,285 | 10.7% | 1,001 | 8.6% | 119 | 3.5% | 164 | 4.6% |
| Delinquent: | 4,151 | 34.5% | 3,759 | 32.2% | 833 | 24.6% | 696 | 19.6% |
| Depend-Neg.: | 6 | 0.0% | 14 | 0.1% | 13 | 0.4% | 7 | 0.2% |
| Drinking under Age: | 8 | 0.1% | 6 | 0.1% | 3 | 0.1% | 0 | 0.0% |
| Game-Fish: | 5 | 0.0% | 7 | 0.1% | 2 | 0.1% | 1 | 0.0% |
| Interrupted: | 602 | 5.0% | 590 | 5.1% | 143 | 4.2% | 168 | 4.7% |
| Park-Municipal: | 394 | 3.3% | 500 | 4.3% | 482 | 14.2% | 515 | 14.5% |
| Runaway: | 53 | 0.4% | 65 | 0.6% | 119 | 3.5% | 128 | 3.6% |
| Traffic: | 193 | 1.6% | 145 | 1.2% | 66 | 1.9% | 67 | 1.9% |
| Reason Held | | | | | | | | |
| Court: | 5,265 | 43.7% | 5,812 | 49.9% | 1,857 | 54.8% | 2,144 | 60.3% |
| DYC: | 1,391 | 11.6% | 1,237 | 10.6% | 144 | 4.3% | 220 | 6.2% |
| Parole: | 151 | 1.3% | 143 | 1.2% | 31 | 0.9% | 19 | 0.5% |
| Police: | 3,831 | 31.8% | 3,018 | 25.9% | 804 | 23.7% | 577 | 16.2% |
| Probation: | 1,265 | 10.5% | 1,307 | 11.2% | 402 | 11.9% | 441 | 12.4% |
| Situational: | 97 | 0.8% | 71 | 0.6% | 56 | 1.7% | 54 | 1.5% |
| Social Service: | 41 | 0.3% | 69 | 0.6% | 93 | 2.7% | 100 | 2.8% |
| Legal Status ³ | | | | | | | | |
| Preadjudicated: | 8,257 | 68.6% | 7,765 | 66.6% | 2,663 | 78.6% | 2,731 | 76.8% |
| Boot Camp Sentences: | 451 | 3.7% | 445 | 3.8% | 1 | 0.0% | 0 | 0.0% |
| Contempt Sentences: | 78 | 0.6% | 143 | 1.2% | 89 | 2.6% | 94 | 2.6% |
| Delinquent Sentences: | 77 | 0.6% | 148 | 1.3% | 20 | 0.6% | 46 | 1.3% |
| Game-Fish Sentences: | 0 | 0.0% | 1 | 0.0% | 0 | 0.0% | 0 | 0.0% |
| Handgun Sentences: | 18 | 0.1% | 21 | 0.2% | 0 | 0.0% | 1 | 0.0% |
| Municipal Sentences: | 173 | 1.4% | 166 | 1.4% | 101 | 3.0% | 90 | 2.5% |
| Probation Sentences: | 1,128 | 9.4% | 1,278 | 11.0% | 290 | 8.6% | 328 | 9.2% |
| Traffic Sentences: | 18 | 0.1% | 21 | 0.2% | 5 | 0.1% | 7 | 0.2% |
| New Commitment: | 719 | 6.0% | 910 | 7.8% | 116 | 3.4% | 140 | 3.9% |
| Return Commitment: | 1,122 | 9.3% | 759 | 6.5% | 102 | 3.0% | 118 | 3.3% |
| POPULATION DATA | | | | | | | | |
| Average Daily Population | | | | | | | | |
| Preadjudicated: | 276.6 | | 308.6 | | 66.1 | | 78.3 | |
| Sentenced: | 113.7 | | 122.7 | | 12.4 | | 14.6 | |
| Committed: | 39.3 | | 22.6 | | 7.1 | | 3.6 | |
| Committed Awaiting Placement: | 67.1 | | 41.2 | | 9.4 | | 10.9 | |
| TOTAL: | 496.7 | | 495.1 | | 95.1 | | 107.4 | |
| Average Length of Stay (days): | 15.1 | | 15.7 | | 9.7 | | 10.8 | |

¹Detention data and demographic data are based on number of admissions. A youth may be admitted more than once during the year.

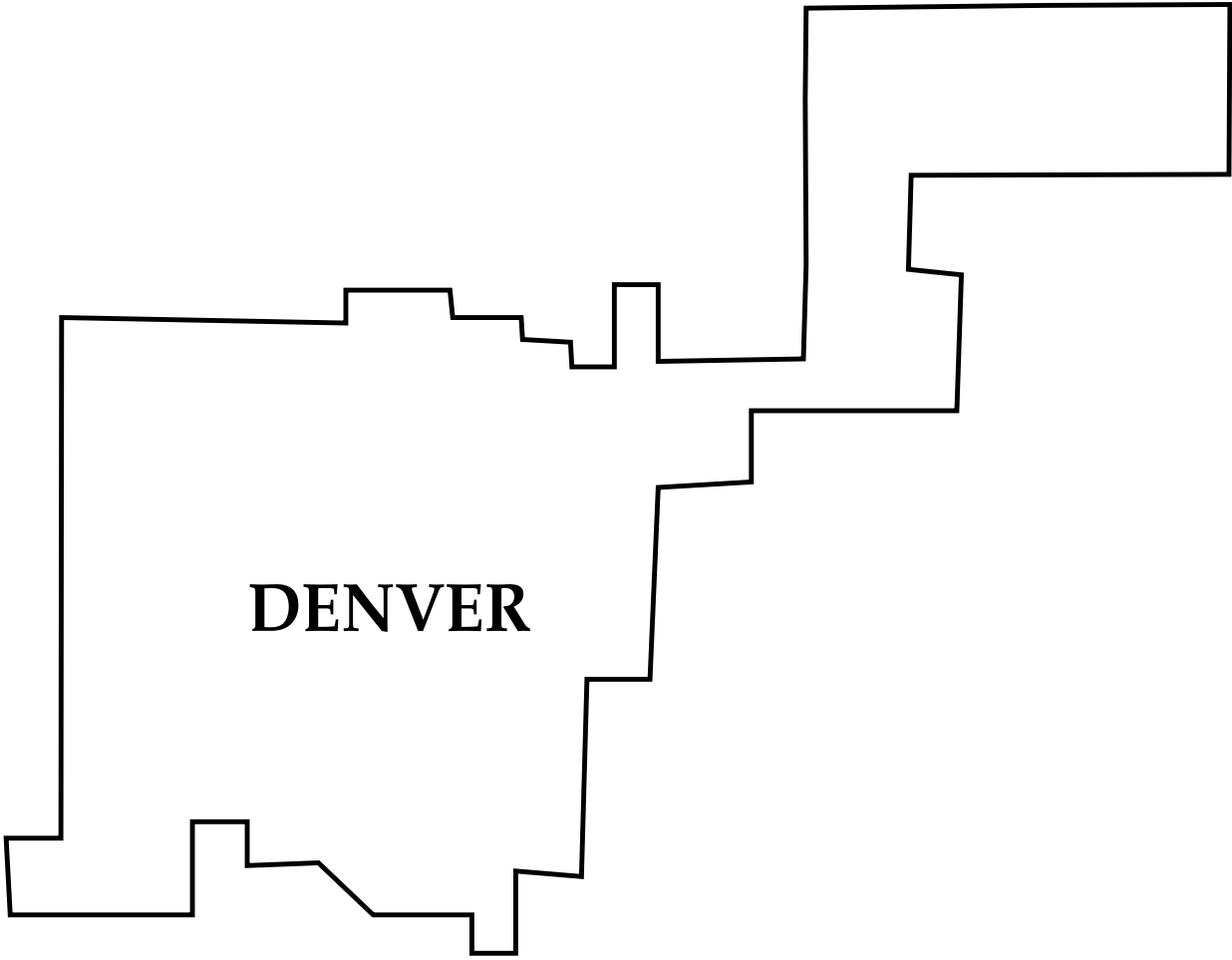
²Average age at detention admission has been recalculated for the past three years and are slightly higher than figures reported in previous manuals. In prior years these calculations were based on discrete (e.g., 16 years) values for age and are now based on continuous (e.g., 16.487) values.

³Legal status admission figures have been updated and are slightly different from prior years.



SECTION IV

REGIONAL SUMMARIES



DENVER

DENVER REGION

**DENVER REGION
FY 1997-98 AND FY 1998-99
COMMITTED YOUTH**

| POPULATION DATA | FY 1997-98 | | FY 1998-99 | | DEMOGRAPHIC DATA ¹ | FY 1997-98 | | FY 1998-99 | |
|--------------------------------------|------------|----------|------------|----------|--|-------------------|-------------------|------------|------|
| | n | % | n | % | | n | % | n | % |
| Number of New Commitments: | 144 | | 190 | | Sex | | | | |
| Average Daily Population Assessment: | 11.3 | | 17.3 | | Male: | 124 | 86% | 173 | 91% |
| Secure/Staff Secure: | 159.4 | | 182.9 | | Female: | 20 | 14% | 17 | 9% |
| Community Residential: | 29.9 | | 38.9 | | TOTAL | 144 | 100% | 190 | 100% |
| TOTAL | 200.6 | | 239.1 | | Ethnicity | | | | |
| Average LOS (months) | | | | | Anglo-American: | 13 | 9% | 27 | 14% |
| Secure/Staff Secure: | 14.4 | | 13.2 | | African-American: | 56 | 39% | 73 | 38% |
| Community Residential: | 5.7 | | 4.8 | | Hispanic/Latino: | 65 | 45% | 82 | 43% |
| Total Residential: | 15.3 | | 17.2 | | Native-American: | 5 | 3% | 4 | 2% |
| Total Commitment: | 23.8 | | 24.9 | | Asian-American: | 4 | 3% | 1 | 1% |
| | | | | | Other: | 1 | 1% | 3 | 2% |
| | | | | | TOTAL | 144 | 100% | 190 | 100% |
| COMMITMENT DATA | n | % | n | % | Age at Commitment: | | | | |
| Sentence Type ¹ : | | | | | 12 Years | 3 | 2% | 0 | 0% |
| Non-Mandatory: | 62 | 43% | 87 | 46% | 13 Years | 8 | 6% | 5 | 3% |
| Mandatory: | 67 | 47% | 75 | 39% | 14 Years | 11 | 8% | 19 | 10% |
| Repeat: | 14 | 10% | 27 | 14% | 15 Years | 29 | 20% | 32 | 17% |
| Violent: | 0 | 0% | 1 | 1% | 16 Years | 47 | 33% | 62 | 33% |
| Aggravated Juvenile: | 1 | 1% | 0 | 0% | 17 Years | 43 | 30% | 66 | 35% |
| Adult: | 0 | 0% | 0 | 0% | 18 Years | 2 | 1% | 6 | 3% |
| TOTAL | 144 | 100% | 190 | 100% | 19 Years | 1 | 1% | 0 | 0% |
| | | | | | 20 Years | 0 | 0% | 0 | 0% |
| | | | | | 21 Years | 0 | 0% | 0 | 0% |
| | | | | | TOTAL | 144 | 100% | 190 | 100% |
| Commitment Type: | | | | | Average Age at Commitment ² : | 16.3 Yrs. | | 16.5 Yrs. | |
| New Commitments: | 144 | 78% | 190 | 81% | | | | | |
| Concurrent: | 40 | 22% | 37 | 16% | | | | | |
| Consecutive: | 1 | 1% | 7 | 3% | | | | | |
| TOTAL | 185 | 100% | 234 | 100% | | | | | |
| | | | | | PAROLE DATA | FY 1997-98 | FY 1998-99 | | |
| | | | | | No. Youth Served on Parole: | 123 | | 152 | |
| | | | | | Average Daily Population ³ : | 50.4 | | 55.7 | |
| | | | | | Average LOS on Parole (mos.): | 6.6 | | 7.9 | |
| New Commitment Classification | | | | | | | | | |
| Cell 1 | 1 | 1% | 0 | 0% | Cell 11 | 1 | 1% | 2 | 1% |
| Cell 2 | 3 | 2% | 3 | 2% | Cell 12 | 15 | 10% | 23 | 12% |
| Cell 3 | 1 | 1% | 8 | 4% | Cell 13 | 27 | 19% | 35 | 18% |
| Cell 4 | 3 | 2% | 8 | 4% | Cell 14 | 12 | 8% | 16 | 8% |
| Cell 5 | 2 | 1% | 5 | 3% | Cell 15 | 0 | 0% | 0 | 0% |
| Cell 6 | 0 | 0% | 0 | 0% | Cell 16 | 6 | 4% | 4 | 2% |
| Cell 7 | 4 | 3% | 11 | 6% | Cell 17 | 21 | 15% | 15 | 8% |
| Cell 8 | 13 | 9% | 13 | 7% | Cell 18 | 11 | 8% | 26 | 14% |
| Cell 9 | 12 | 8% | 14 | 7% | Cell 19 ⁴ | 0 | - | 0 | - |
| Cell 10 | 12 | 8% | 7 | 4% | Cell 20 ⁴ | 0 | - | 0 | - |
| | | | | | Cell Not Available | 0 | - | 0 | - |

¹Data are based on NEW commitments.

²Average ages at commitment for the two years shown above have been recalculated and is slightly higher than previously reported. In prior years, these calculations were based on discrete values (e.g., 16 years) for age and are now based on continuous values (e.g., 16.487 years).

³Average daily population is the average number of active youth on parole during the time period. Youth on parole who were on escape status during the time period are not included.

⁴Scoring of the new classification grid does not allow youth to fall into this cell.

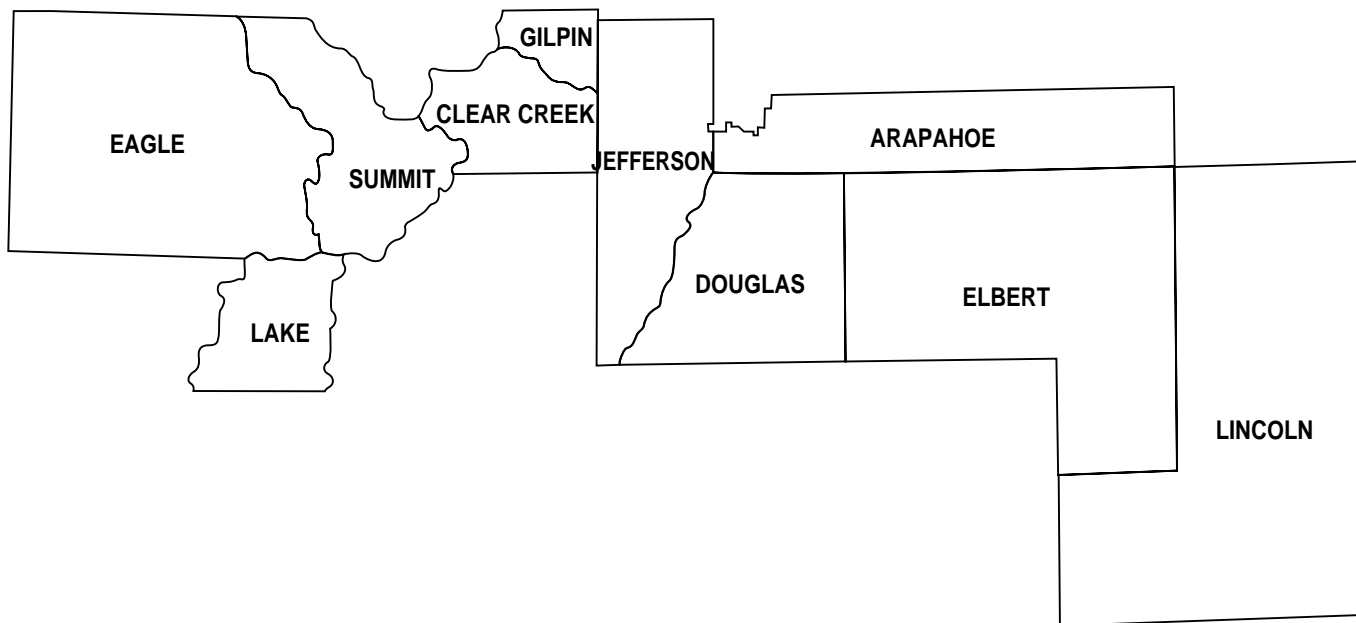
**DENVER REGION
FY 1997-98 AND FY 1998-99
DETAINED YOUTH¹**

| | <u>FY 1997-98</u> | | <u>FY 1998-99</u> | | | <u>FY 1997-98</u> | | <u>FY 1998-99</u> | |
|---------------------------|-------------------|----------|-------------------|----------|---|-------------------|----------|-------------------|----------|
| POPULATION DATA | | | | | DEMOGRAPHIC DATA | | | | |
| Number of Intakes: | 3,695 | | 3,558 | | | n | % | n | % |
| Number of Admissions: | 3,693 | | 3,550 | | Sex | | | | |
| Average Daily Population: | 130.9 | | 119.8 | | Male: | 2,682 | 73% | 2,605 | 73% |
| Average LOS (days): | 13.1 | | 12.63 | | Female: | 1,011 | 27% | 945 | 27% |
| DETENTION DATA | | | | | TOTAL: | | | | |
| | n | % | n | % | | 3,693 | 100% | 3,550 | 100% |
| Charge | | | | | Ethnicity | | | | |
| CHINO: | 0 | 0% | 0 | 0% | Anglo-American: | 592 | 16% | 629 | 18% |
| Court Order: | 1,115 | 30% | 1,132 | 32% | African-American: | 1,174 | 32% | 1,078 | 30% |
| Courtesy: | 520 | 14% | 576 | 16% | Hispanic/Latino: | 1,809 | 49% | 1,714 | 48% |
| Delinquent: | 1,632 | 44% | 1,249 | 35% | Native-American: | 46 | 1% | 47 | 1% |
| Depend-Neg.: | 0 | 0% | 5 | 0% | Asian-American: | 23 | 1% | 27 | 1% |
| Game-Fish: | 1 | 0% | 0 | 0% | Other: | 49 | 1% | 55 | 2% |
| Interrupted: | 38 | 1% | 38 | 1% | TOTAL: | | | | |
| Park-Municipal: | 258 | 7% | 394 | 11% | | 3,693 | 100% | 3,550 | 100% |
| Runaway: | 106 | 3% | 148 | 4% | | | | | |
| Traffic: | 23 | 1% | 8 | 0% | | | | | |
| TOTAL | | | | | | | | | |
| | 3,693 | 100% | 3,550 | 100% | | | | | |
| Reason Held | | | | | Age at Admission | | | | |
| Court: | 1,212 | 33% | 1,360 | 38% | 10 Years | 14 | 0% | 4 | 0% |
| DYC: | 542 | 15% | 619 | 17% | 11 Years | 30 | 1% | 19 | 1% |
| Parole: | 61 | 2% | 34 | 1% | 12 Years | 84 | 2% | 88 | 2% |
| Police: | 1,498 | 41% | 1,082 | 30% | 13 Years | 287 | 8% | 258 | 7% |
| Probation: | 261 | 7% | 299 | 8% | 14 Years | 486 | 13% | 501 | 14% |
| Situational: | 56 | 2% | 61 | 2% | 15 Years | 807 | 22% | 729 | 21% |
| Social Service: | 63 | 2% | 95 | 3% | 16 Years | 971 | 26% | 849 | 24% |
| TOTAL | | | | | 17 Years | 920 | 25% | 1,041 | 29% |
| | 3,693 | 100% | 3,550 | 100% | 18 Years | 66 | 2% | 48 | 1% |
| | | | | | 19 Years | 25 | 1% | 13 | 0% |
| Legal Status ³ | | | | | 20 Years | 3 | 0% | 0 | 0% |
| Preadjudicated: | 2,863 | 78% | 2,667 | 75% | Over 20 Years | 0 | 0% | 0 | 0% |
| Boot Camp Sentences: | 18 | 0% | 15 | 0% | TOTAL: | | | | |
| Contempt Sentences: | 21 | 1% | 35 | 1% | | 3,693 | 100% | 3,550 | 100% |
| Delinquent Sentences: | 0 | 0% | 0 | 0% | | | | | |
| Game-Fish Sentences: | 0 | 0% | 0 | 0% | Average Age at Admission ² : | | | | |
| Handgun Sentences: | 0 | 0% | 0 | 0% | | 16.0 Yrs. | | 16.0 Yrs. | |
| Municipal Sentences: | 1 | 0% | 0 | 0% | | | | | |
| Probation Sentences: | 259 | 7% | 265 | 7% | | | | | |
| Traffic Sentences: | 0 | 0% | 0 | 0% | | | | | |
| Return Commitment: | 531 | 14% | 568 | 16% | | | | | |
| TOTAL: | | | | | | | | | |
| | 3,693 | 100% | 3,550 | 100% | | | | | |

¹Detention data and demographic data are based on number of admissions. A youth may be admitted more than once during the year. Figures include youth from other states/countries admitted to DYC-operated detention centers in this region.

²Average age at detention admission has been recalculated for the past three years and is slightly higher than figures reported in previous manuals. In prior years these calculations were based on discrete (e.g., 16 years) values for age and are now based on continuous (e.g., 16.487) values.

³Legal status admission figures have been updated and are slightly different from prior years.



CENTRAL REGION

**CENTRAL REGION
FY 1997-98 AND FY1998-99
COMMITTED YOUTH**

| POPULATION DATA | FY 1997-98 | | FY 1998-99 | | DEMOGRAPHIC DATA ¹ | FY 1997-98 | | FY 1998-99 | |
|--------------------------------------|------------|----------|------------|----------|--|-------------------|-------------------|------------|------|
| | n | % | n | % | | n | % | n | % |
| Number of New Commitments: | 171 | | 194 | | Sex | | | | |
| Average Daily Population Assessment: | 0.3 | | 15.3 | | Male: | 148 | 87% | 159 | 82% |
| Secure/Staff Secure: | 168.3 | | 180.9 | | Female: | 23 | 13% | 35 | 18% |
| Community Residential: | 42.2 | | 58.9 | | TOTAL | 171 | 100% | 194 | 100% |
| TOTAL | 210.8 | | 255.0 | | Ethnicity | | | | |
| Average LOS (months) | | | | | Anglo-American: | 121 | 71% | 124 | 64% |
| Secure/Staff Secure: | 10.6 | | 12.0 | | African-American: | 23 | 13% | 26 | 13% |
| Community Residential: | 5.7 | | 6.3 | | Hispanic/Latino: | 23 | 13% | 34 | 18% |
| Total Residential: | 15.3 | | 16.7 | | Native-American: | 0 | 0% | 5 | 3% |
| Total Commitment: | 23.8 | | 25.6 | | Asian-American: | 0 | 0% | 1 | 1% |
| | | | | | Other: | 4 | 2% | 4 | 2% |
| | | | | | TOTAL | 171 | 100% | 194 | 100% |
| COMMITMENT DATA | n | % | n | % | Age at Commitment: | | | | |
| Sentence Type ¹ | | | | | 12 Years | 2 | 1% | 1 | 1% |
| Non-Mandatory: | 88 | 51% | 103 | 53% | 13 Years | 8 | 5% | 7 | 4% |
| Mandatory: | 66 | 39% | 78 | 40% | 14 Years | 18 | 11% | 21 | 11% |
| Repeat: | 16 | 9% | 8 | 4% | 15 Years | 39 | 23% | 38 | 20% |
| Violent: | 0 | 0% | 4 | 2% | 16 Years | 49 | 29% | 50 | 26% |
| Aggravated Juvenile: | 1 | 1% | 1 | 1% | 17 Years | 48 | 28% | 62 | 32% |
| Adult: | 0 | 0% | 0 | 0% | 18 Years | 7 | 4% | 14 | 7% |
| TOTAL | 171 | 100% | 194 | 100% | 19 Years | 0 | 0% | 1 | 1% |
| | | | | | 20 Years | 0 | 0% | 0 | 0% |
| | | | | | 21 Years | 0 | 0% | 0 | 0% |
| | | | | | TOTAL | 171 | 100% | 194 | 100% |
| Commitment Type | | | | | Average Age at Commitment ² : | 16.2 Yrs. | | 16.4 Yrs. | |
| New Commitments: | 171 | 77% | 194 | 83% | | | | | |
| Concurrent: | 46 | 21% | 38 | 16% | PAROLE DATA | FY 1997-98 | FY 1998-99 | | |
| Consecutive: | 4 | 2% | 2 | 1% | No. Youth Served on Parole: | 142 | | 202 | |
| TOTAL | 221 | 100% | 234 | 100% | Average Daily Population ³ : | 63.7 | | 79.0 | |
| | | | | | Average LOS on Parole (mos.): | 7.8 | | 8.5 | |
| New Commitment Classification | | | | | | | | | |
| Cell 1 | 0 | 0% | 2 | 1% | Cell 11 | 1 | 1% | 1 | 1% |
| Cell 2 | 3 | 2% | 1 | 1% | Cell 12 | 18 | 11% | 21 | 11% |
| Cell 3 | 6 | 4% | 13 | 7% | Cell 13 | 34 | 20% | 43 | 22% |
| Cell 4 | 8 | 5% | 7 | 4% | Cell 14 | 28 | 16% | 14 | 7% |
| Cell 5 | 5 | 3% | 2 | 1% | Cell 15 | 0 | 0% | 0 | 0% |
| Cell 6 | 0 | 0% | 0 | 0% | Cell 16 | 6 | 4% | 16 | 8% |
| Cell 7 | 2 | 1% | 1 | 1% | Cell 17 | 23 | 13% | 22 | 11% |
| Cell 8 | 4 | 2% | 10 | 5% | Cell 18 | 13 | 8% | 23 | 12% |
| Cell 9 | 10 | 6% | 7 | 4% | Cell 19 ⁴ | 0 | - | 0 | - |
| Cell 10 | 9 | 5% | 11 | 6% | Cell 20 ⁴ | 0 | - | 0 | - |
| | | | | | Cell Not Available | 1 | - | 0 | - |

¹Data are based on NEW commitments.

²Average ages at commitment for the two years shown above have been recalculated and is slightly higher than previously reported. In prior years, these calculations were based on discrete values (e.g., 16 years) for age and are now based on continuous values (e.g., 16.487 years).

³Average daily population is the average number of active youth on parole during the time period. Youth on parole who were on escape status during the time period are not included.

⁴Scoring of the new classification grid does not allow youth to fall into this cell.

**CENTRAL REGION
POPULATION DATA ON COMMITTED YOUTH
BY COUNTY OF RESIDENCE**

| County | FY 1997-98 | | | FY 1998-99 | | |
|----------------------------|----------------|--------------|-----------------------|----------------|--------------|-----------------------|
| | New Commits | ADP | Res. LOS (mos.) | New Commits | ADP | Res. LOS (mos.) |
| Arapahoe | 66 | 77.2 | 14.7 | 74 | 98.6 | 15.6 |
| Clear Creek | 0 | 0.3 | 5.8 | 1 | 0.4 | 13.3 |
| Douglas | 12 | 11.9 | 17.6 | 10 | 14.5 | 18.2 |
| Eagle | 5 | 3.2 | 9.0 | 3 | 3.5 | 7.1 |
| Elbert | 1 | 1.1 | 14.6 | 5 | 2.8 | 20.1 |
| Gilpin | 0 | 0.0 | 0.0 | 0 | 0.0 | 0.0 |
| Jefferson | 86 | 113.4 | 16.2 | 96 | 132.3 | 17.5 |
| Lake | 1 | 1.6 | 19.3 | 1 | 0.9 | 21.7 |
| Lincoln | 0 | 0.1 | 11.2 | 0 | 0.0 | 0.0 |
| Summit | 0 | 0.7 | 15.6 | 2 | 0.6 | 17.8 |
| Other States/ Countries | 0 | 1.3 | 0.0 | 2 | 1.6 | 9.6 |
| TOTALS | 171 | 210.8 | 15.3 | 194 | 255.0 | 16.7 |

**CENTRAL REGION
FY 1997-98 AND FY 1998-99
DETAINED YOUTH¹**

| POPULATION DATA | <u>FY 1997-98</u> | <u>FY 1998-99</u> | | | | |
|---|---|-------------------|-------------------------|----------|-----------|----------|
| Number of Intakes: | 3,775 | 3,764 | | | | |
| Number of Admissions ² : | 3,760 | 3,755 | | | | |
| Average Daily Population ² : | 151.3 | 150.9 | | | | |
| Average LOS (days): | 14.6 | 14.9 | | | | |
| | | | DEMOGRAPHIC DATA | | | |
| | | | n | % | n | % |
| | | | Sex | | | |
| | | | 2,954 | 79% | 2,868 | 76% |
| | | | 806 | 21% | 887 | 24% |
| | | | TOTAL: | | | |
| | | | 3,760 | 100% | 3,755 | 100% |
| | | | DETENTION DATA | | | |
| | n | % | n | % | | |
| | Charge | | | | | |
| CHINO: | 2 | 0% | 1 | 0% | | |
| Court Order: | 1,829 | 49% | 1,823 | 49% | | |
| Courtesy: | 280 | 7% | 283 | 8% | | |
| Delinquent: | 1,081 | 29% | 1,061 | 28% | | |
| Depend-Neg.: | 0 | 0% | 6 | 0% | | |
| Game-Fish: | 2 | 0% | 5 | 0% | | |
| Interrupted: | 208 | 6% | 228 | 6% | | |
| Park-Municipal: | 278 | 7% | 273 | 7% | | |
| Runaway: | 5 | 0% | 4 | 0% | | |
| Traffic: | 75 | 2% | 71 | 2% | | |
| | | | TOTAL: | | | |
| | 3,760 | 100% | 3,755 | 100% | | |
| | Reason Held | | | | | |
| Court: | 1,997 | 53% | 1,982 | 53% | | |
| DYC: | 376 | 10% | 405 | 11% | | |
| Parole: | 54 | 1% | 44 | 1% | | |
| Police: | 953 | 25% | 873 | 23% | | |
| Probation: | 350 | 9% | 430 | 11% | | |
| Situational: | 27 | 1% | 13 | 0% | | |
| Social Service: | 3 | 0% | 8 | 0% | | |
| | | | TOTAL: | | | |
| | 3,760 | 100% | 3,755 | 100% | | |
| | Legal Status ³ | | | | | |
| Preadjudicated: | 2,503 | 67% | 2,384 | 63% | | |
| Boot Camp Sentences: | 85 | 2% | 81 | 2% | | |
| Contempt Sentences: | 113 | 3% | 185 | 5% | | |
| Delinquent Sentences: | 19 | 1% | 42 | 1% | | |
| Game-Fish Sentences: | 0 | 0% | 1 | 0% | | |
| Handgun Sentences: | 10 | 0% | 7 | 0% | | |
| Municipal Sentences: | 113 | 3% | 96 | 3% | | |
| Probation Sentences: | 421 | 11% | 472 | 13% | | |
| Traffic Sentences: | 6 | 0% | 10 | 0% | | |
| Return Commitment: | 490 | 13% | 477 | 13% | | |
| | | | TOTAL: | | | |
| | 3,760 | 100% | 3,755 | 100% | | |
| | Age at Admission | | | | | |
| | | | 5 | 0% | 2 | 0% |
| | | | 12 | 0% | 18 | 0% |
| | | | 87 | 2% | 56 | 1% |
| | | | 225 | 6% | 240 | 6% |
| | | | 530 | 14% | 493 | 13% |
| | | | 872 | 23% | 819 | 22% |
| | | | 930 | 25% | 1,019 | 27% |
| | | | 1,003 | 27% | 1,019 | 27% |
| | | | 79 | 2% | 64 | 2% |
| | | | 16 | 0% | 23 | 1% |
| | | | 1 | 0% | 2 | 0% |
| | | | 0 | 0% | 0 | 0% |
| | | | TOTAL: | | | |
| | | | 3,760 | 100% | 3,755 | 100% |
| | Average Age at Admission ² : | | | | | |
| | | | 16.0 Yrs. | | 16.1 Yrs. | |

¹Detention Data and demographic data are based on number of admissions. A youth may be admitted more than once during the year. Figures include youth from other states/countries admitted to DYC-operated detention centers in this region.

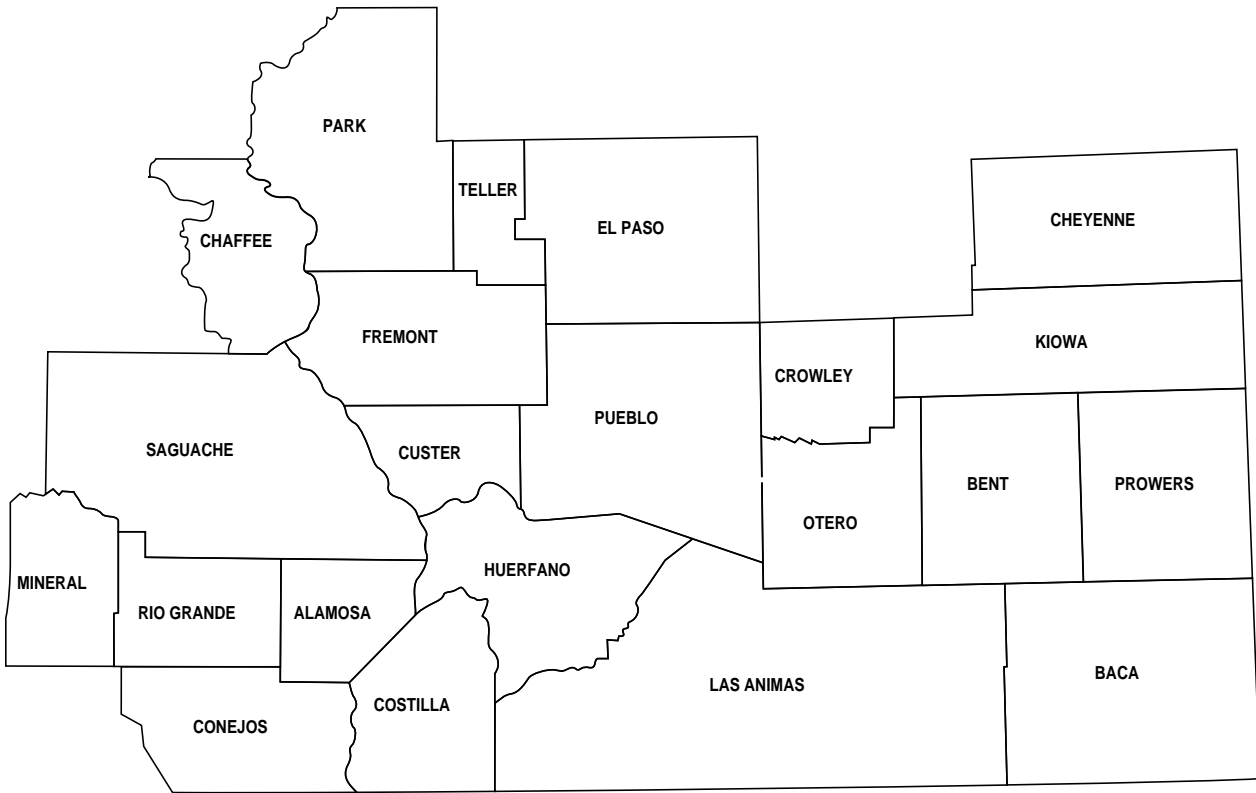
²Average age at detention admission has been recalculated for the past three years and is slightly higher than figure reported in previous manuals. In prior years these calculations were based on discrete (e.g., 16 years) values for age and are now based on continuous (e.g., 16.487) values.

³Legal status admission figures have been updated and are slightly different from prior years.

**CENTRAL REGION
POPULATION DATA ON DETAINED YOUTH
BY COUNTY**

| County of Offense | FY 1997-98 | | | FY 1998-99 | | |
|----------------------------|--------------|--------------|---------------|--------------|--------------|---------------|
| | Admissions | ADP | LOS (Days) | Admissions | ADP | LOS (Days) |
| Arapahoe | 1,566 | 61.7 | 14.3 | 1,564 | 53.2 | 12.6 |
| Clear Creek | 9 | 0.5 | 22.3 | 14 | 0.8 | 20.9 |
| Douglas | 219 | 10.7 | 17.2 | 216 | 9.7 | 16.4 |
| Eagle | 62 | 4.0 | 25.0 | 53 | 2.0 | 13.9 |
| Elbert | 24 | 1.2 | 17.9 | 31 | 2.0 | 23.5 |
| Gilpin | 7 | 0.4 | 19.4 | 5 | 0.1 | 7.0 |
| Jefferson | 1,781 | 69.5 | 14.2 | 1,791 | 80.2 | 16.7 |
| Lake | 24 | 1.3 | 19.7 | 23 | 0.8 | 12.9 |
| Lincoln | 9 | 0.3 | 12.0 | 5 | 0.3 | 15.1 |
| Summit | 35 | 1.0 | 10.5 | 31 | 1.6 | 19.0 |
| Other States/ Countries | 24 | 0.8 | 10.9 | 22 | 0.3 | 5.6 |
| TOTALS | 3,760 | 151.3 | 14.6 | 3,755 | 150.9 | 14.9 |

¹Boulder County detention admissions came under Northeastern DYC Management Region jurisdiction in FY1997-98.



SOUTHERN REGION

**SOUTHERN REGION
FY 1997-98 AND FY 1998-99
COMMITTED YOUTH**

| POPULATION DATA | FY 1997-98 | | FY 1998-99 | | DEMOGRAPHIC DATA ¹ | FY 1997-98 | | FY 1998-99 | |
|--------------------------------------|------------|----------|------------|----------|--|-------------------|-------------------|------------|------|
| | n | % | n | % | | n | % | n | % |
| Number of New Commitments: | 199 | | 202 | | Sex | | | | |
| Average Daily Population Assessment: | 15.6 | | 18.8 | | Male: | 176 | 88% | 176 | 87% |
| Secure/Staff Secure: | 153.5 | | 189.9 | | Female: | 23 | 12% | 26 | 13% |
| Community Residential: | 40.6 | | 41.7 | | TOTAL | 199 | 100% | 202 | 100% |
| TOTAL | 209.7 | | 250.5 | | Ethnicity | | | | |
| Average LOS (months) | | | | | Anglo-American: | 94 | 47% | 97 | 48% |
| Secure/Staff Secure: | 9.1 | | 10.6 | | African-American: | 31 | 16% | 28 | 14% |
| Community Residential: | 5.7 | | 5.0 | | Hispanic/Latino: | 71 | 36% | 74 | 37% |
| Total Residential: | 12.8 | | 14.2 | | Native-American: | 0 | 0% | 2 | 1% |
| Total Commitment: | 20.1 | | 22.0 | | Asian-American: | 0 | 0% | 0 | 0% |
| | | | | | Other: | 3 | 2% | 1 | 0% |
| | | | | | TOTAL | 199 | 100% | 202 | 100% |
| COMMITMENT DATA | n | % | n | % | Age at Commitment: | | | | |
| Type of Commitment ¹ | | | | | 12 Years | 1 | 1% | 0 | 0% |
| Non-Mandatory: | 136 | 68% | 80 | 40% | 13 Years | 4 | 2% | 11 | 5% |
| Mandatory: | 48 | 24% | 93 | 46% | 14 Years | 29 | 15% | 21 | 10% |
| Repeat: | 10 | 5% | 27 | 13% | 15 Years | 47 | 24% | 52 | 26% |
| Violent: | 2 | 1% | 1 | 0% | 16 Years | 64 | 32% | 64 | 32% |
| Aggravated Juvenile: | 3 | 2% | 1 | 0% | 17 Years | 48 | 24% | 51 | 25% |
| Adult: | 0 | 0% | 0 | 0% | 18 Years | 6 | 3% | 3 | 1% |
| TOTAL | 199 | 100% | 202 | 100% | 19 Years | 0 | 0% | 0 | 0% |
| | | | | | 20 Years | 0 | 0% | 0 | 0% |
| | | | | | 21 Years | 0 | 0% | 0 | 0% |
| | | | | | TOTAL | 199 | 100% | 202 | 100% |
| Breakdown of Sentences | | | | | Average Age at Commitment ² : | 16.2 Yrs. | | 16.2 Yrs. | |
| New Commitments: | 199 | 83% | 202 | 81% | | | | | |
| Concurrent: | 35 | 15% | 37 | 15% | | | | | |
| Consecutive: | 6 | 3% | 9 | 4% | | | | | |
| TOTAL | 240 | 100% | 248 | 100% | PAROLE DATA | FY 1997-98 | FY 1998-99 | | |
| New Commitment Classification | | | | | No. Youth Served on Parole: | 131 | | 220 | |
| Cell 1 | 0 | 0% | 1 | 0% | Average Daily Population ³ : | 57.8 | | 91.1 | |
| Cell 2 | 5 | 3% | 3 | 1% | Average LOS on Parole (mos.): | 6.7 | | 8.6 | |
| Cell 3 | 8 | 4% | 10 | 5% | Cell 11 | 3 | 2% | 2 | 1% |
| Cell 4 | 8 | 4% | 8 | 4% | Cell 12 | 17 | 9% | 16 | 8% |
| Cell 5 | 1 | 1% | 6 | 3% | Cell 13 | 43 | 22% | 48 | 24% |
| Cell 6 | 0 | 0% | 0 | 0% | Cell 14 | 24 | 12% | 35 | 17% |
| Cell 7 | 6 | 3% | 1 | 0% | Cell 15 | 0 | 0% | 0 | 0% |
| Cell 8 | 17 | 9% | 13 | 6% | Cell 16 | 3 | 2% | 2 | 1% |
| Cell 9 | 13 | 7% | 8 | 4% | Cell 17 | 19 | 10% | 20 | 10% |
| Cell 10 | 12 | 6% | 14 | 7% | Cell 18 | 15 | 8% | 14 | 7% |
| | | | | | Cell 19 ⁴ | 0 | - | 0 | - |
| | | | | | Cell 20 ⁴ | 0 | - | 0 | - |
| | | | | | Cell Not Available | 5 | 3% | 1 | 0% |

¹Data are based on NEW commitments.

²Average ages at commitment for the two years shown above have been recalculated and is slightly higher than previous years, these calculations were based on discrete values (e.g., 16 years) for age and are now based on continuous values (e.g., 16.487 years).

³Average daily population is the average number of active youth on parole during the time period. youth on parole who were on escape status during the time period are not included.

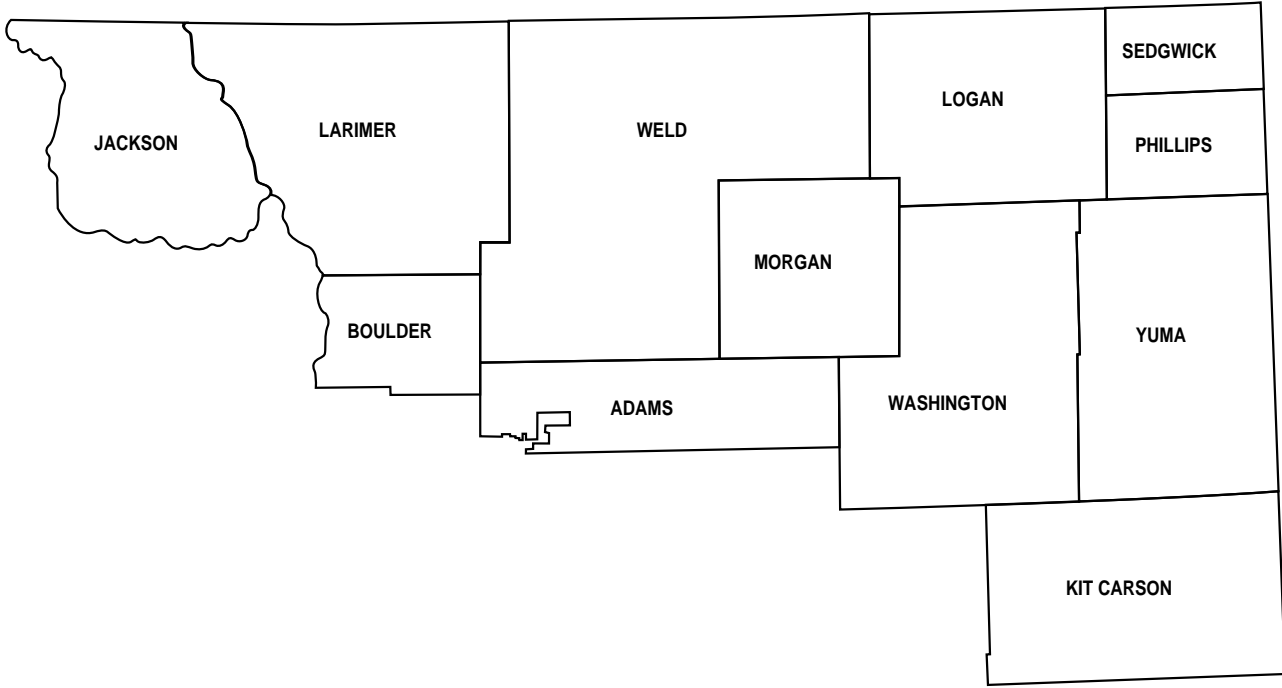
⁴Scoring of the new classification grid does not allow youth to fall into this cell.

**SOUTHERN REGION
POPULATION DATA ON COMMITTED YOUTH
BY COUNTY OF RESIDENCE**

| County | FY 1997-98 | | | FY 1998-99 | | |
|----------------------------|----------------|--------------|-----------------------|----------------|--------------|-----------------------|
| | New Commits | Res. ADP | Res. LOS (mos.) | New Commits | Res. ADP | Res. LOS (mos.) |
| Alamosa | 9 | 6.9 | 13.6 | 4 | 8.4 | 11.2 |
| Baca | 0 | 0.0 | 0.0 | 0 | 0.0 | 0.0 |
| Bent | 0 | 1.5 | 18.8 | 2 | 1.0 | 11.8 |
| Chaffee | 3 | 1.3 | 7.8 | 1 | 2.2 | 7.2 |
| Cheyenne | 0 | 0.0 | 0.0 | 0 | 0.0 | 0.0 |
| Conejos | 4 | 2.4 | 13.5 | 2 | 2.2 | 13.1 |
| Costilla | 1 | 0.5 | 15.8 | 1 | 0.4 | 0.0 |
| Crowley | 1 | 0.8 | 19.9 | 0 | 0.8 | 0.0 |
| Custer | 1 | 0.5 | 0.0 | 0 | 0.5 | 11.7 |
| El Paso | 98 | 119.5 | 16.4 | 107 | 147.7 | 17.3 |
| Fremont | 9 | 8.9 | 8.8 | 13 | 13.3 | 13.0 |
| Huerfano | 1 | 1.1 | 5.2 | 4 | 2.8 | 7.6 |
| Kiowa | 0 | 0.0 | 0.0 | 0 | 0.0 | 0.0 |
| Las Animas | 6 | 10.2 | 12.8 | 5 | 7.4 | 14.6 |
| Mineral | 0 | 0.0 | 0.0 | 0 | 0.0 | 0.0 |
| Otero | 9 | 6.3 | 15.3 | 19 | 15.1 | 8.1 |
| Park | 5 | 3.1 | 0.0 | 5 | 3.7 | 11.7 |
| Prowers | 7 | 6.7 | 7.5 | 11 | 4.5 | 9.9 |
| Pueblo | 29 | 25.1 | 9.6 | 23 | 27.4 | 12.2 |
| Rio Grande | 0 | 4.6 | 12.0 | 0 | 0.4 | 10.1 |
| Saguache | 5 | 1.9 | 11.4 | 0 | 2.8 | 9.3 |
| Teller | 5 | 3.2 | 14.6 | 4 | 6.6 | 4.2 |
| Other States/ Countries | 6 | 5.5 | 7.8 | 1 | 3.6 | 6.6 |
| TOTALS | 199 | 209.7 | 12.8 | 202 | 250.5 | 14.2 |

**SOUTHERN REGION
POPULATION DATA ON DETAINED YOUTH
BY COUNTY**

| County of Offense | FY 1997-98 | | | FY 1998-99 | | |
|----------------------------|--------------|--------------|---------------|--------------|--------------|---------------|
| | Admissions | ADP | LOS (Days) | Admissions | ADP | LOS (Days) |
| Alamosa | 140 | 6.2 | 14.5 | 118 | 7.6 | 15.2 |
| Baca | 1 | 0.0 | 15.0 | 3 | 0.6 | 68.2 |
| Bent | 12 | 0.4 | 11.0 | 8 | 0.5 | 22.7 |
| Chaffee | 62 | 2.3 | 9.1 | 38 | 1.1 | 10.8 |
| Cheyenne | 1 | 0.0 | 9.9 | 2 | 0.2 | 28.5 |
| Conejos | 21 | 1.0 | 11.7 | 32 | 3.0 | 10.8 |
| Costilla | 12 | 0.5 | 15.1 | 19 | 0.6 | 10.2 |
| Crowley | 15 | 0.5 | 13.0 | 8 | 0.3 | 14.7 |
| Custer | 10 | 0.3 | 9.1 | 4 | 0.1 | 12.0 |
| El Paso | 2,116 | 66.5 | 11.2 | 2,054 | 80.1 | 14.3 |
| Fremont | 208 | 6.6 | 10.8 | 194 | 7.6 | 14.2 |
| Huerfano | 20 | 1.4 | 24.9 | 63 | 3.4 | 18.8 |
| Kiowa | 0 | 0.0 | 0.0 | 1 | 0.0 | 4.9 |
| Las Animas | 62 | 2.5 | 14.5 | 47 | 2.8 | 22.7 |
| Mineral | 0 | 0.0 | 0.0 | 0 | 0.0 | 0.0 |
| Otero | 106 | 5.2 | 18.2 | 139 | 8.3 | 21.4 |
| Park | 45 | 2.2 | 17.3 | 26 | 1.3 | 19.8 |
| Prowers | 65 | 7.3 | 37.8 | 57 | 6.0 | 44.0 |
| Pueblo | 1,002 | 36.7 | 12.6 | 964 | 33.6 | 13.1 |
| Rio Grande | 45 | 3.2 | 19.4 | 33 | 1.9 | 26.4 |
| Saguache | 26 | 1.3 | 18.5 | 12 | 0.5 | 16.9 |
| Teller | 75 | 2.1 | 9.7 | 60 | 2.7 | 15.6 |
| Other States/ Countries | 31 | 0.4 | 5.2 | 12 | 0.8 | 37.2 |
| TOTALS | 4,075 | 146.6 | 12.5 | 3,894 | 163.0 | 15.1 |



NORTHEAST
REGION

NORTHEAST REGION

**NORTHEAST REGION
FY 1997-98 AND FY 1998-99
COMMITTED YOUTH**

| POPULATION DATA | FY 1997-98 | | FY 1998-99 | | DEMOGRAPHIC DATA ¹ | FY 1997-98 | | FY 1998-99 | |
|--------------------------------------|------------|----------|------------|----------|--|-------------------|-------------------|------------|------|
| | n | % | n | % | | n | % | n | % |
| Number of New Commitments: | 157 | | 185 | | Sex | | | | |
| Average Daily Population Assessment: | 12.7 | | 14.8 | | Male: | 134 | 85% | 173 | 94% |
| Secure/Staff Secure: | 185.5 | | 191.1 | | Female: | 23 | 15% | 12 | 6% |
| Community Residential: | 30.0 | | 33.1 | | TOTAL | 157 | 100% | 185 | 100% |
| TOTAL | 228.2 | | 239.1 | | Ethnicity | | | | |
| Average LOS (months) | | | | | Anglo-American: | 90 | 57% | 87 | 47% |
| Secure/Staff Secure: | 12.2 | | 12.4 | | African-American: | 5 | 3% | 16 | 9% |
| Community Residential: | 5.0 | | 4.4 | | Hispanic/Latino: | 58 | 37% | 79 | 43% |
| Total Residential: | 15.8 | | 15.5 | | Native-American: | 1 | 1% | 0 | 0% |
| Total Commitment: | 22.9 | | 23.0 | | Asian-American: | 3 | 2% | 2 | 1% |
| | | | | | Other: | 0 | 0% | 1 | 1% |
| | | | | | TOTAL | 157 | 100% | 185 | 100% |
| COMMITMENT DATA | n | % | n | % | Age at Commitment: | | | | |
| Type of Commitment ¹ | | | | | 12 Years | 0 | 0% | 1 | 1% |
| Non-Mandatory: | 80 | 51% | 88 | 48% | 13 Years | 6 | 4% | 8 | 4% |
| Mandatory: | 59 | 38% | 73 | 39% | 14 Years | 14 | 9% | 16 | 9% |
| Repeat: | 12 | 8% | 10 | 5% | 15 Years | 39 | 25% | 39 | 21% |
| Violent: | 4 | 3% | 5 | 3% | 16 Years | 38 | 24% | 47 | 25% |
| Aggravated Juvenile: | 2 | 1% | 9 | 5% | 17 Years | 49 | 31% | 64 | 35% |
| Adult: | 0 | 0% | 0 | 0% | 18 Years | 9 | 6% | 7 | 4% |
| TOTAL | 157 | 100% | 185 | 100% | 19 Years | 2 | 1% | 2 | 1% |
| | | | | | 20 Years | 0 | 0% | 1 | 1% |
| | | | | | 21 Years | 0 | 0% | 0 | 0% |
| Breakdown of Sentences | | | | | TOTAL | 157 | 100% | 185 | 100% |
| New Commitments: | 157 | 84% | 185 | 82% | Average Age at Commitment ² : | 16.5 Yrs. | | 16.5 Yrs. | |
| Concurrent: | 30 | 16% | 38 | 17% | | | | | |
| Consecutive: | 1 | 1% | 2 | 1% | PAROLE DATA | FY 1997-98 | FY 1998-99 | | |
| TOTAL | 188 | 100% | 225 | 100% | No. Youth Served on Parole: | 115 | | 181 | |
| | | | | | Average Daily Population ³ : | 45.9 | | 70.5 | |
| New Commitment Classification | | | | | Average LOS on Parole (mos.): | 6.4 | | 7.38 | |
| Cell 1 | 0 | 0% | 0 | 0% | Cell 11 | 1 | 1% | 3 | 2% |
| Cell 2 | 1 | 1% | 2 | 1% | Cell 12 | 12 | 8% | 13 | 7% |
| Cell 3 | 1 | 1% | 4 | 2% | Cell 13 | 28 | 18% | 44 | 24% |
| Cell 4 | 5 | 3% | 4 | 2% | Cell 14 | 26 | 17% | 24 | 13% |
| Cell 5 | 0 | 0% | 1 | 1% | Cell 15 | 0 | 0% | 0 | 0% |
| Cell 6 | 0 | 0% | 0 | 0% | Cell 16 | 7 | 4% | 6 | 3% |
| Cell 7 | 2 | 1% | 2 | 1% | Cell 17 | 20 | 13% | 22 | 12% |
| Cell 8 | 6 | 4% | 9 | 5% | Cell 18 | 18 | 11% | 24 | 13% |
| Cell 9 | 16 | 10% | 15 | 8% | Cell 19 ⁴ | 0 | - | 0 | - |
| Cell 10 | 14 | 9% | 10 | 5% | Cell 20 ⁴ | 0 | - | 0 | - |
| | | | | | Cell Not Available | 0 | 0% | 2 | 1% |

¹Data are based on NEW commitments.

²Average ages at commitment for the two years shown above have been recalculated and is slightly higher than previously reported. In prior years, these calculations were based on discrete values (e.g., 16 years) for age and are now based on continuous values (e.g., 16.487 years).

³Average daily population is the average number of active youth on parole during the time period. Youth on parole who were on escape status during the time period are not included.

⁴Scoring of the new classification grid does not allow youth to fall into this cell.

**NORTHEAST REGION
POPULATION DATA ON COMMITTED YOUTH
BY COUNTY OF RESIDENCE**

| County | FY 1997-98 | | | FY 1998-99 | | |
|----------------------------|----------------|--------------|-----------------------|----------------|--------------|-----------------------|
| | New Commits | Res. ADP | Res. LOS (mos.) | New Commits | Res. ADP | Res. LOS (mos.) |
| Adams | 47 | 75.8 | 17.8 | 72 | 86.4 | 16.1 |
| Boulder | 33 | 33.9 | 13.8 | 16 | 37.5 | 16.1 |
| Jackson | 1 | 0.2 | 0.0 | 1 | 1.0 | 0.0 |
| Kit Carson | 0 | 0.0 | 0.0 | 0 | 0.0 | 0.0 |
| Larimer | 37 | 51.3 | 14.9 | 34 | 48.6 | 15.0 |
| Logan | 1 | 2.0 | 0.0 | 0 | 1.1 | 10.4 |
| Morgan | 6 | 9.9 | 15.7 | 5 | 7.6 | 16.3 |
| Phillips | 0 | 0.5 | 0.0 | 0 | 0.0 | 12.0 |
| Sedgwick | 0 | 0.0 | 0.0 | 0 | 0.0 | 0.0 |
| Washington | 0 | 0.8 | 0.0 | 0 | 0.0 | 10.1 |
| Weld | 32 | 51.9 | 15.6 | 53 | 54.4 | 16.0 |
| Yuma | 0 | 0.4 | 7.1 | 3 | 1.6 | 5.1 |
| Other States/ Countries | 0 | 1.5 | 15.6 | 1 | 1.0 | 0.0 |
| TOTALS | 157 | 228.2 | 15.8 | 185 | 239.1 | 15.5 |

**NORTHEAST REGION
FY 1997-98 AND FY 1998-99
DETAINED YOUTH¹**

| POPULATION DATA | FY 1997-98 | | FY 1998-99 | | DEMOGRAPHIC DATA | FY 1997-98 | | FY 1998-99 | |
|---|--------------|-------------|--------------|-------------|---|--------------|-------------|--------------|-------------|
| | n | % | n | % | | n | % | n | % |
| Number of Intakes: | 2,936 | | 3,060 | | | | | | |
| Number of Admissions ² : | 2,906 | | 3,046 | | Sex | | | | |
| Average Daily Population ² : | 110.9 | | 116.5 | | Male: | 2,326 | 80% | 2,411 | 79% |
| Average LOS (days): | 14.2 | | 14.2 | | Female: | 580 | 20% | 635 | 21% |
| DETENTION DATA | n | % | n | % | TOTAL: | 2,906 | 100% | 3,046 | 100% |
| Charge | | | | | Ethnicity | | | | |
| CHINO: | 1 | 0% | 0 | 0% | Anglo-American: | 1,573 | 54% | 1,578 | 52% |
| Court Order: | 1,463 | 50% | 1,885 | 62% | African-American: | 181 | 6% | 160 | 5% |
| Courtesy: | 226 | 8% | 112 | 4% | Hispanic/Latino: | 1,069 | 37% | 1,237 | 41% |
| Delinquent: | 804 | 28% | 628 | 21% | Native-American: | 19 | 1% | 23 | 1% |
| Depend-Neg.: | 9 | 0% | 4 | 0% | Asian-American: | 41 | 1% | 26 | 1% |
| Game-Fish: | 1 | 0% | 1 | 0% | Other: | 23 | 1% | 22 | 1% |
| Interrupted: | 304 | 10% | 269 | 9% | TOTAL: | 2,906 | 100% | 3,046 | 100% |
| Park-Municipal: | 48 | 2% | 87 | 3% | Age at Admission | | | | |
| Runaway: | 31 | 1% | 29 | 1% | 10 Years | 6 | 0% | 1 | 0% |
| Traffic: | 19 | 1% | 31 | 1% | 11 Years | 9 | 0% | 24 | 1% |
| TOTAL | 2,906 | 100% | 3,046 | 100% | 12 Years | 50 | 2% | 92 | 3% |
| Reason Held | | | | | 13 Years | 154 | 5% | 233 | 8% |
| Court: | 1,469 | 51% | 2,111 | 69% | 14 Years | 440 | 15% | 449 | 15% |
| DYC: | 232 | 8% | 122 | 4% | 15 Years | 598 | 21% | 637 | 21% |
| Parole: | 17 | 1% | 39 | 1% | 16 Years | 716 | 25% | 759 | 25% |
| Police: | 729 | 25% | 466 | 15% | 17 Years | 878 | 30% | 792 | 26% |
| Probation: | 406 | 14% | 250 | 8% | 18 Years | 47 | 2% | 46 | 2% |
| Situational: | 29 | 1% | 29 | 1% | 19 Years | 7 | 0% | 9 | 0% |
| Social Service: | 24 | 1% | 29 | 1% | 20 Years | 1 | 0% | 4 | 0% |
| TOTAL | 2,906 | 100% | 3,046 | 100% | Over 20 Years | 0 | 0% | 0 | 0% |
| Legal Status ³ | | | | | TOTAL: | 2,906 | 100% | 3,046 | 100% |
| Preadjudicated: | 2,083 | 72% | 2,239 | 74% | Average Age at Admission ² : | 16.1 Yrs. | | 15.9 Yrs. | |
| Boot Camp Sentences: | 82 | 3% | 82 | 3% | | | | | |
| Contempt Sentences: | 9 | 0% | 4 | 0% | | | | | |
| Delinquent Sentences: | 7 | 0% | 41 | 1% | | | | | |
| Game-Fish Sentences: | 0 | 0% | 0 | 0% | | | | | |
| Handgun Sentences: | 4 | 0% | 8 | 0% | | | | | |
| Municipal Sentences: | 39 | 1% | 41 | 1% | | | | | |
| Probation Sentences: | 334 | 11% | 337 | 11% | | | | | |
| Traffic Sentences: | 3 | 0% | 5 | 0% | | | | | |
| Return Commitment: | 345 | 12% | 289 | 9% | | | | | |
| TOTAL: | 2,906 | 100% | 3,046 | 100% | | | | | |

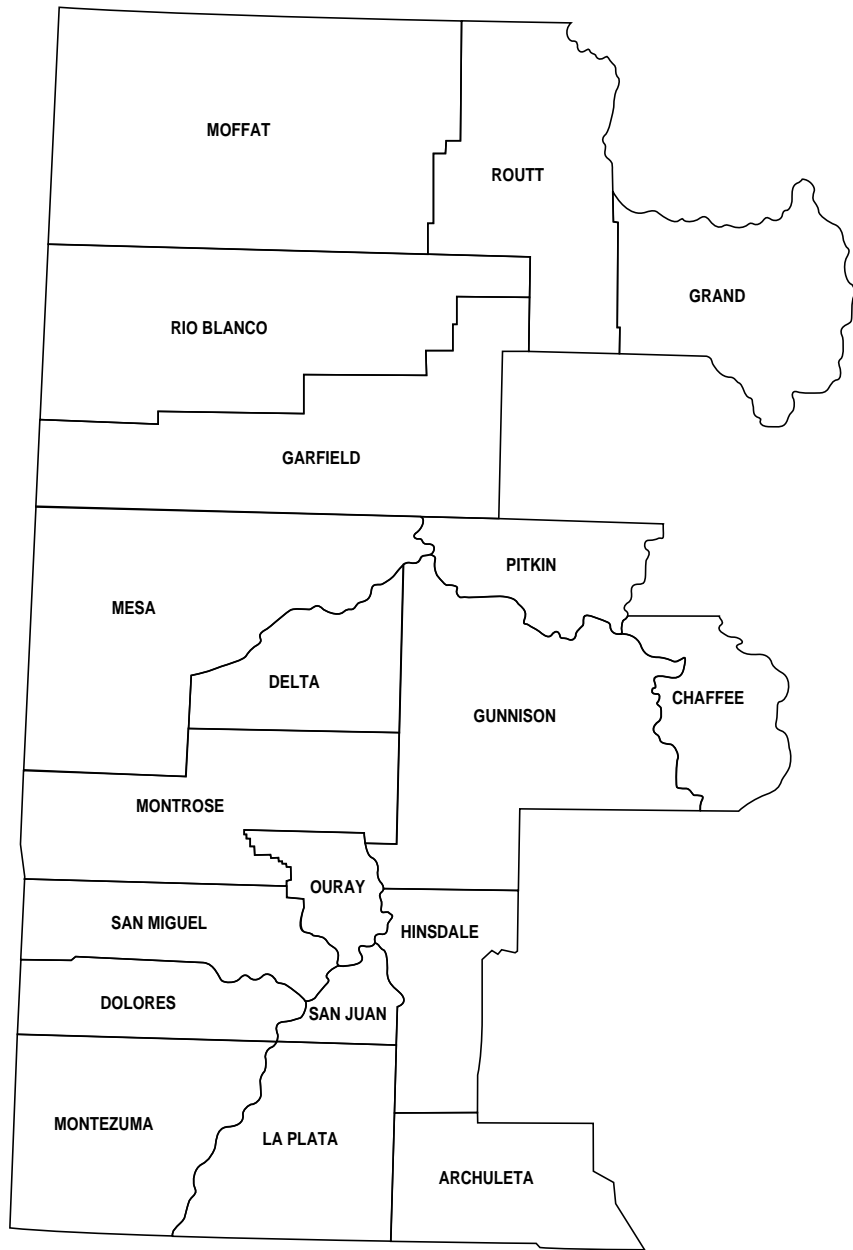
¹Detention Data and demographic data are based on number of admissions. A youth may be admitted more than once during the year. Figures include youth from other states/countries admitted to DYC-operated detention centers in this region.

²Average age at detention admission has been recalculated for the past three years and is slightly higher than figures reported in previous manuals. In prior years these calculations were based on discrete (e.g., 16 years) values for age and are now based on continuous (e.g., 16.487) values.

³Legal status admission figures have been updated and are slightly different from prior years.

**NORTHEAST REGION
POPULATION DATA ON DETAINED YOUTH
BY COUNTY**

| County of Offense | FY 1997-98 | | | FY 1998-99 | | |
|----------------------|--------------|--------------|---------------|--------------|--------------|---------------|
| | Admisssions | ADP | LOS (Days) | Admisssions | ADP | LOS (Days) |
| Adams | 882 | 34.2 | 14.7 | 809 | 38.1 | 17.2 |
| Boulder | 873 | 26.9 | 11.6 | 872 | 22.7 | 9.7 |
| Jackson | 2 | 0.4 | 70.9 | 4 | 0.1 | 3.8 |
| Kit Carson | 10 | 0.6 | 20.0 | 8 | 1.0 | 46.1 |
| Larimer | 456 | 19.2 | 15.7 | 539 | 20.8 | 14.5 |
| Logan | 56 | 4.1 | 22.6 | 56 | 3.4 | 21.9 |
| Morgan | 65 | 4.4 | 26.4 | 59 | 5.5 | 30.5 |
| Phillips | 0 | 0.0 | 0.0 | 2 | 0.0 | 3.0 |
| Sedgwick | 0 | 0.0 | 0.0 | 0 | 0.0 | 0.0 |
| Washington | 4 | 0.3 | 32.9 | 2 | 0.5 | 164.9 |
| Weld | 531 | 19.6 | 13.8 | 677 | 23.9 | 13.4 |
| Yuma | 10 | 0.9 | 31.2 | 6 | 0.2 | 15.0 |
| Other States/Cour | 17 | 0.2 | 4.3 | 12 | 0.4 | 12.2 |
| TOTALS | 2,906 | 110.9 | 14.2 | 3,046 | 116.5 | 14.2 |



WESTERN REGION

**WESTERN REGION
FY 1997-98 AND FY 1998-99
COMMITTED YOUTH**

| POPULATION DATA | FY 1997-98 | | FY 1998-99 | | DEMOGRAPHIC DATA ¹ | FY 1997-98 | | FY 1998-99 | |
|---------------------------------|------------|----------|------------|----------|--|-------------------|-------------------|------------|------|
| | n | % | n | % | | n | % | n | % |
| Number of New Commitments: | 110 | | 107 | | Sex | | | | |
| ADP | | | | | Male: | 96 | 87% | 88 | 82% |
| Assessment: | 9.9 | | 8.3 | | Female: | 14 | 13% | 19 | 18% |
| Secure/Staff Secure: | 83.3 | | 89.7 | | TOTAL | 110 | 100% | 107 | 100% |
| Community Residential: | 30.3 | | 30.1 | | Ethnicity | | | | |
| TOTAL | 123.5 | | 128.2 | | Anglo-American: | 78 | 71% | 75 | 70% |
| Average LOS (mos.) | | | | | African-American: | 7 | 6% | 1 | 1% |
| Secure/Staff Secure: | 9.2 | | 9.5 | | Hispanic/Latino: | 21 | 19% | 28 | 26% |
| Community Residential: | 4.9 | | 5.5 | | Native-American: | 3 | 3% | 3 | 3% |
| Total Residential: | 13.0 | | 13.6 | | Asian-American: | 1 | 1% | 0 | 0% |
| Total Commitment: | 18.2 | | 22.0 | | Other: | 0 | 0% | 0 | 0% |
| | | | | | TOTAL | 110 | 100% | 107 | 100% |
| COMMITMENT DATA | n | % | n | % | Age at Commitment: | | | | |
| Type of Commitment ¹ | | | | | 12 Years | 0 | 0% | 1 | 1% |
| Non-Mandatory: | 72 | 65% | 78 | 73% | 13 Years | 2 | 2% | 6 | 6% |
| Mandatory: | 29 | 26% | 17 | 16% | 14 Years | 8 | 7% | 7 | 7% |
| Repeat: | 8 | 7% | 12 | 11% | 15 Years | 17 | 15% | 13 | 12% |
| Violent: | 0 | 0% | 0 | 0% | 16 Years | 26 | 24% | 43 | 40% |
| Aggravated Juvenile: | 1 | 1% | 0 | 0% | 17 Years | 54 | 49% | 35 | 33% |
| Adult: | 0 | 0% | 0 | 0% | 18 Years | 3 | 3% | 2 | 2% |
| TOTAL | 110 | 100% | 107 | 100% | 19 Years | 0 | 0% | 0 | 0% |
| | | | | | 20 Years | 0 | 0% | 0 | 0% |
| | | | | | 21 Years | 0 | 0% | 0 | 0% |
| | | | | | TOTAL | 110 | 100% | 107 | 100% |
| Breakdown of Sentences | | | | | Average Age at Commitment ² : | 16.7 Yrs. | | 16.4 Yrs. | |
| New Commitments: | 110 | 88% | 107 | 85% | | | | | |
| Concurrent: | 9 | 7% | 11 | 9% | | | | | |
| Consecutive: | 6 | 5% | 8 | 6% | | | | | |
| TOTAL | 125 | 100% | 126 | 100% | PAROLE DATA | FY 1997-98 | FY 1998-99 | | |
| New Commitment Classification | | | | | No. Youth Served on Parole: | 99 | | 157 | |
| Cell 1 | 0 | 0% | 1 | 1% | Average Daily Population ³ : | 37.3 | | 69.9 | |
| Cell 2 | 3 | 3% | 5 | 5% | Average LOS on Parole (mos.): | 6.3 | | 8.9 | |
| Cell 3 | 3 | 3% | 6 | 6% | Cell 11 | 1 | 1% | 3 | 3% |
| Cell 4 | 1 | 1% | 4 | 4% | Cell 12 | 24 | 22% | 19 | 18% |
| Cell 5 | 0 | 0% | 2 | 2% | Cell 13 | 17 | 15% | 22 | 21% |
| Cell 6 | 0 | 0% | 0 | 0% | Cell 14 | 8 | 7% | 12 | 11% |
| Cell 7 | 3 | 3% | 3 | 3% | Cell 15 | 0 | 0% | 0 | 0% |
| Cell 8 | 11 | 10% | 9 | 8% | Cell 16 | 9 | 8% | 3 | 3% |
| Cell 9 | 9 | 8% | 3 | 3% | Cell 17 | 12 | 11% | 5 | 5% |
| Cell 10 | 3 | 3% | 2 | 2% | Cell 18 | 5 | 5% | 8 | 7% |
| | | | | | Cell 19 ⁴ | 0 | - | 0 | - |
| | | | | | Cell 20 ⁴ | 0 | - | 0 | - |
| | | | | | Cell Not Available | 1 | 1% | 0 | 0% |

¹Data are based on NEW commitments.

²Average ages at commitment for the two years shown above have been recalculated and is slightly higher than previously reported. In prior years, these calculations were based on discrete values (e.g., 16 years) for age and are now based on continuous values (e.g., 16.487 years).

³Average daily population is the average number of active youth on parole during the time period. Youth on parole who were on escape status during the time period are not included.

⁴Scoring of the new classification grid does not allow youth to fall into this cell.

**WESTERN REGION
POPULATION DATA ON COMMITTED YOUTH
BY COUNTY OF RESIDENCE**

| County | FY 1997-98 | | | FY 1998-99 | | |
|----------------------------|----------------|--------------|-----------------------|----------------|--------------|-----------------------|
| | New Commits | Res. ADP | Res. LOS (mos.) | New Commits | Res. ADP | Res. LOS (mos.) |
| Archuleta | 1 | 0.2 | 0.0 | 3 | 2.5 | 2.9 |
| Delta | 5 | 11.4 | 11.8 | 8 | 7.9 | 16.4 |
| Dolores | 1 | 1.7 | 0.0 | 0 | 0.7 | 20.5 |
| Garfield | 19 | 17.4 | 14.3 | 12 | 19.7 | 13.4 |
| Grand | 1 | 0.4 | 0.0 | 3 | 1.4 | 0.0 |
| Gunnison | 2 | 1.4 | 7.7 | 1 | 1.4 | 0.0 |
| Hinsdale | 0 | 0.0 | 0.0 | 0 | 0.0 | 0.0 |
| La Plata | 7 | 6.5 | 14.2 | 16 | 12.9 | 7.6 |
| Mesa | 54 | 54.4 | 15.2 | 38 | 56.9 | 14.6 |
| Moffat | 6 | 3.6 | 8.9 | 4 | 3.3 | 0.0 |
| Montezuma | 2 | 3.8 | 10.1 | 3 | 4.6 | 23.0 |
| Montrose | 7 | 13.4 | 15.0 | 9 | 9.9 | 12.9 |
| Ouray | 0 | 2.6 | 5.5 | 0 | 1.7 | 19.1 |
| Pitkin | 0 | 1.0 | 12.3 | 1 | 0.7 | 0.0 |
| Rio Blanco | 0 | 0.2 | 12.5 | 0 | 0.0 | 0.0 |
| Routt | 1 | 1.1 | 13.3 | 4 | 1.7 | 0.0 |
| San Juan | 0 | 0.0 | 0.0 | 0 | 0.0 | 0.0 |
| San Miguel | 1 | 1.5 | 0.0 | 3 | 1.8 | 11.6 |
| Other States/ Countries | 3 | 3.0 | 6.5 | 2 | 1.3 | 6.7 |
| TOTALS | 110 | 123.5 | 13.0 | 107 | 128.2 | 13.6 |

**WESTERN REGION
FY 1997-98 AND FY 1998-99
DETAINED YOUTH¹**

| POPULATION DATA | FY 1997-98 | | FY 1998-99 | | DEMOGRAPHIC DATA | FY 1997-98 | | FY 1998-99 | |
|---------------------------|------------|-------------|------------|-------------|---|------------|-------------|------------|-------------|
| | n | % | n | % | | n | % | n | % |
| Number of Intakes: | 999 | | 969 | | | | | | |
| Number of Admissions: | 994 | | 967 | | | | | | |
| Average Daily Population: | 52.0 | | 52.2 | | Sex | | | | |
| Average LOS (days): | 19.3 | | 19.5 | | Male: | 850 | 86% | 783 | 81% |
| | | | | | Female: | 144 | 14% | 184 | 19% |
| DETENTION DATA | n | % | n | % | TOTAL: | 994 | 100% | 967 | 100% |
| Charge | | | | | | | | | |
| CHINO: | 0 | 0% | 0 | 0% | Ethnicity | | | | |
| Court Order: | 648 | 65% | 614 | 63% | Anglo-American: | 723 | 73% | 705 | 73% |
| Courtesy: | 24 | 2% | 18 | 2% | African-American: | 17 | 2% | 17 | 2% |
| Delinquent: | 300 | 30% | 315 | 33% | Hispanic/Latino: | 224 | 23% | 203 | 21% |
| Depend-Neg.: | 0 | 0% | 1 | 0% | Native-American: | 27 | 3% | 31 | 3% |
| Game-Fish: | 0 | 0% | 0 | 0% | Asian-American: | 2 | 0% | 7 | 1% |
| Interrupted: | 11 | 1% | 12 | 1% | Other: | 1 | 0% | 4 | 0% |
| Park-Municipal: | 3 | 0% | 1 | 0% | | | | | |
| Runaway: | 1 | 0% | 0 | 0% | TOTAL: | 994 | 100% | 967 | 100% |
| Traffic: | 7 | 1% | 6 | 1% | | | | | |
| TOTAL | 994 | 100% | 967 | 100% | Age at Admission | | | | |
| Reason Held | | | | | 10 Years | 5 | 1% | 3 | 0% |
| Court: | 554 | 56% | 534 | 55% | 11 Years | 4 | 0% | 4 | 0% |
| DYC: | 14 | 1% | 10 | 1% | 12 Years | 8 | 1% | 15 | 2% |
| Parole: | 13 | 1% | 10 | 1% | 13 Years | 42 | 4% | 54 | 6% |
| Police: | 246 | 25% | 237 | 25% | 14 Years | 100 | 10% | 109 | 11% |
| Probation: | 161 | 16% | 164 | 17% | 15 Years | 192 | 19% | 195 | 20% |
| Situational: | 5 | 1% | 10 | 1% | 16 Years | 317 | 32% | 277 | 29% |
| Social Service: | 1 | 0% | 2 | 0% | 17 Years | 312 | 31% | 307 | 32% |
| TOTAL | 994 | 100% | 967 | 100% | 18 Years | 12 | 1% | 3 | 0% |
| Legal Status ³ | | | | | 19 Years | 2 | 0% | 0 | 0% |
| Preadjudicated: | 708 | 71% | 691 | 71% | 20 Years | 0 | 0% | 0 | 0% |
| Boot Camp Sentences: | 82 | 8% | 68 | 7% | Over 20 Years | 0 | 0% | 0 | 0% |
| Contempt Sentences: | 2 | 0% | 1 | 0% | TOTAL: | 994 | 100% | 967 | 100% |
| Delinquent Sentences: | 1 | 0% | 1 | 0% | | | | | |
| Game-Fish Sentences: | 0 | 0% | 0 | 0% | Average Age at Admission ² : | 16.3 Yrs. | | 16.2 Yrs. | |
| Handgun Sentences: | 0 | 0% | 1 | 0% | | | | | |
| Municipal Sentences: | 0 | 0% | 1 | 0% | | | | | |
| Probation Sentences: | 130 | 13% | 126 | 13% | | | | | |
| Traffic Sentences: | 1 | 0% | 4 | 0% | | | | | |
| Return Commitment: | 70 | 7% | 74 | 8% | | | | | |
| TOTAL: | 994 | 100% | 967 | 100% | | | | | |

¹Detention Data and demographic data are based on number of admissions. A youth may be admitted more than once during the year. Figures include youth from other states/countries admitted to DYC-operated detention centers in this region.

²Average age at detention admission has been recalculated for the past three years and is slightly higher than figures reported in previous manuals. In prior years these calculations were based on discrete (e.g., 16 years) values for age and are now based on continuous (e.g., 16.487) values.

³Legal status admission figures have been updated and are slightly different from prior years.

**WESTERN REGION
POPULATION DATA ON DETAINED YOUTH
BY COUNTY**

| County of Offense | FY 1997-98 | | | FY 1998-99 | | |
|----------------------------|------------|-------------|---------------|------------|-------------|---------------|
| | Admissions | ADP | LOS (Days) | Admissions | ADP | LOS (Days) |
| Archuleta | 17 | 1.4 | 29.5 | 13 | 0.9 | 25.4 |
| Delta | 24 | 1.0 | 14.0 | 24 | 1.2 | 17.5 |
| Dolores | 3 | 0.1 | 13.3 | 3 | 0.4 | 43.0 |
| Garfield | 122 | 7.6 | 20.9 | 112 | 6.3 | 19.3 |
| Grand | 9 | 0.9 | 38.5 | 25 | 2.1 | 30.2 |
| Gunnison | 10 | 0.6 | 22.9 | 5 | 0.3 | 23.4 |
| Hinsdale | 0 | 0.0 | 0.0 | 1 | 0.0 | 1.2 |
| La Plata | 113 | 5.3 | 18.0 | 103 | 6.3 | 21.1 |
| Mesa | 477 | 22.4 | 17.1 | 470 | 21.9 | 17.1 |
| Moffat | 57 | 3.5 | 23.3 | 32 | 1.8 | 20.3 |
| Montezuma | 32 | 1.0 | 12.3 | 33 | 2.4 | 24.8 |
| Montrose | 51 | 3.9 | 28.8 | 50 | 3.2 | 24.4 |
| Ouray | 1 | 0.1 | 67.1 | 2 | 0.1 | 10.3 |
| Pitkin | 18 | 0.6 | 9.0 | 20 | 1.2 | 24.3 |
| Rio Blanco | 4 | 0.2 | 24.0 | 25 | 1.6 | 22.8 |
| Routt | 44 | 2.9 | 27.9 | 33 | 1.7 | 20.5 |
| San Juan | 0 | 0.0 | 0.0 | 0 | 0.0 | 0.0 |
| San Miguel | 6 | 0.5 | 27.3 | 7 | 0.6 | 31.7 |
| Other States/ Countries | 6 | 0.0 | 3.8 | 9 | 0.3 | 10.9 |
| TOTALS | 994 | 52.0 | 19.3 | 967 | 52.2 | 19.5 |

