

Management Reference Manual
Fiscal Year 1997-98

December 1998

**This manual provides the information most often requested on DYC client populations. Any questions concerning the data presented in this manual may be directed to Josh Meisel, Research and Evaluation, Division of Youth Corrections, 4255 S. Knox Court, Denver, Colorado, 80236.
TEL: 303-866-7968 EMAIL: josh.meisel@state.co.us**

Division of Youth Corrections artwork designed by students of the Lookout Mountain Youth Services Center silkscreening vocational program.



THE COLORADO DIVISION OF YOUTH CORRECTIONS

VISION

“Establishing the Standard of Excellence in the Juvenile Justice System.”

MISSION

The purpose of the Division of Youth Corrections is to provide a statewide continuum of services and programs to control, assess and treat youths in order to protect the public's safety and to reduce delinquent behavior by:

- Recognizing our public responsibility and committing our efforts to the highest level of customer service and consumer satisfaction;
- Preserving the safety and security of the community through effective supervision of youth;
- Providing appropriate assessment and classification of youths;
- Providing programming which emphasizes accountability of youths for their behavior;
- Providing interventions to reduce recidivism and assist the juvenile in becoming a productive member of society;
- Involving families in the planning and delivery of services;
- Recognizing the experience of citizens and communities as victims of crimes and fully supporting their efforts of restoration;
- Joining with communities in developing collaborative community-based juvenile correctional programs;
- Upholding professional correctional standards.





DIVISION OF YOUTH CORRECTIONS

TABLE OF CONTENTS

| | |
|--|------------|
| DEFINITION OF TERMS | ii |
| EXECUTIVE SUMMARY | vii |
| SECTION I: COLORADO STATE TOTALS | |
| <i>FILTERING PROCESS TO COMMITMENT</i> | 3 |
| <i>FILTERING PROCESS TO DETENTION</i> | 4 |
| <i>CAPACITY IN COMMITMENT PROGRAM SERVICES</i> | 5 |
| <i>CAPACITY IN DETENTION PROGRAM SERVICES</i> | 6 |
| <i>POPULATION DATA ON ALL CLIENTS</i> | 7 |
| SECTION II: COMMITMENT PROGRAM SERVICES | |
| <i>COMMITMENT POPULATION TRENDS (1987-1998)</i> | 9 |
| <i>COMMITMENT POPULATION TRENDS BY PROGRAM TYPE</i> | 11 |
| <i>TRENDS IN COMMITMENT ADP BY PROGRAM TYPE</i> | 12 |
| <i>TRENDS IN COMMITMENT LENGTH OF STAY BY PROGRAM TYPE</i> | 13 |
| <i>POPULATION TRENDS BY SENTENCE AND COMMITMENT TYPE</i> | 14 |
| <i>POPULATION TRENDS BY COMMITMENT CLASSIFICATION SCORES</i> | 15 |
| <i>PAROLE POPULATION TRENDS AND CHARACTERISTICS</i> | 17 |
| <i>COLORADO JUVENILE COMMITMENT RATES BY MAJOR COUNTIES</i> | 18 |
| <i>DEMOGRAPHIC TRENDS</i> | 19 |
| <i>COMMITMENT POPULATION CHARACTERISTICS BY GENDER</i> | 20 |
| SECTION III: DETENTION PROGRAM SERVICES | |
| <i>DETENTION POPULATION TRENDS (1987-1998)</i> | 23 |
| <i>DETENTION POPULATION TRENDS BY PROGRAM TYPE</i> | 25 |
| <i>COLORADO JUVENILE DETENTION RATES BY MAJOR COUNTIES</i> | 26 |
| <i>DEMOGRAPHIC AND OTHER CHARACTERISTICS</i> | 27 |
| <i>DETENTION POPULATION CHARACTERISTICS BY GENDER</i> | 29 |
| SECTION IV: REGIONAL SUMMARIES | |
| <i>DENVER REGION</i> | 32 |
| <i>CENTRAL REGION</i> | 35 |
| <i>SOUTHERN REGION</i> | 40 |
| <i>NORTHEAST REGION</i> | 45 |
| <i>WESTERN REGION</i> | 50 |

DEFINITION OF TERMS

The Management Reference Manual includes terminology specific to services provided by the Division of Youth Corrections (DYC) to commitment and detention populations. These terms are defined below, in separate Commitment and Detention sections.

I. COMMITMENT DEFINITIONS

Commitments are dispositions of juvenile cases resulting in the transfer of legal custody to the Department of Human Services by the court as a result of an adjudicatory hearing on charges of delinquent acts committed by the youth.

A. Types of Commitment Sentences:

- 1. Non-mandatory Sentences** - These sanctions involve no minimum sentence length, and the maximum sentence length cannot exceed 24 months.
- 2. Mandatory Sentences** - These sanctions specify a minimum time period of up to 24 months or less during which a youth must be in an out-of-home placement. Sentence types include youth sentenced as mandatory, repeat, and violent offenders.
- 3. Aggravated Juvenile Sentences** - These sanctions specify a time period from three to seven years during which time a youth must remain in the custody of the Department of Human Services. Contingent upon court approval, youth may be eligible for parole or transferred to the Department of Corrections (adult corrections).

B. Programs for Committed Youth:

During FY1997-98, youth could participate in any or all of six components of the DYC Commitment Program: Assessment, Orientation, Intensive Secure Programs, Medium Care Programs, Community Programs, and Parole. The Commitment Program components other than parole are referred to as "Residential" Commitment.

- 1. Assessment** - There are four assessment locations where youth committed to DYC undergo evaluation to develop continuum of care plans and determine appropriate placement.
- 2. Orientation Program** - The goal of this 45-75 day privately-operated program housed at the Lookout Mountain Youth Services Center is to prepare committed youth for their next commitment placement. The program focuses on improving

youths' attitudes in working with peers and adults and fostering a willingness to change. This component of the NYC Commitment Program opened on July 1, 1996.

3. **Intensive Secure Programs** - Intensive secure programs provide care to those youth who are identified at assessment as presenting the greatest risk of reoffending and/or who were committed to NYC for the most serious offenses.
4. **Medium Care Programs** - Youth who are placed in medium care programs are in need of more supervision than that provided in community settings. Medium care programs are therefore intended for youth who are identified at assessment as presenting less risk of reoffending and/or who were committed to NYC for less serious offenses than those targeted for intensive secure, or who are transitioning from intensive secure facilities.
5. **Community Programs** - NYC contracts with a number of private vendors to provide community-based programs to youth presenting the lowest risk of reoffending and youth transitioning from more secure programs. These programs include both group residential care and foster care programs.

C. Commitment Service Measures:

The Management Reference Manual summarizes population trends and characteristics of populations served in commitment services provided by the Division of Youth Corrections, using specific population measures. The measures used to describe the commitment population are:

- number of new commitments
- number of recommitments
- average daily population (ADP)
- average daily caseload (ADC)
- average length of stay (LOS)
- number of clients served

These measures are described below:

1. **Number of New Commitments** - refers to the number of new youth who have been committed to the Department of Human Services in the reported time period.
2. **Number of Reccommitments** - refers to the number of additional mittimus issued to previously committed youth prior to their discharge from the Division of Youth Corrections. A youth can be recommitted for an offense that occurred prior to the original commitment, or for an offense that occurred while the youth is serving his/her commitment sentence, either during

residential placement or during parole. When a recommitment occurs, the new sentence is either served *concurrently* with the original commitment sentence, or *consecutively*, added to the initial sentence to increase total sentence length.

3. **Average Daily Population (ADP)** - refers to the average number of youth present in a facility or program during the reporting period.
4. **Average Daily Caseload (ADC)** - refers to the average number of active youth on parole during the time period. Youth on parole who were on escape status during the time period are not included.
5. **Lengths of Stay (LOS)** - There are several variations of the length of stay measure. *All commitment LOS figures are measured in months and are calculated for those youth who spent time in a given program type (e.g., intensive secure versus medium care) prior to discharge from NYC custody (including either residential or nonresidential parole supervision).*
 - **Assessment LOS** - is the average amount of time spent in assessment for youth discharged from NYC during the reporting period.
 - **Orientation LOS** - is the average amount of time spent in the orientation program for youth discharged from NYC during the reporting period.
 - **Intensive Secure LOS** - is the average amount of time spent in intensive secure programs for youth discharged from NYC during the reporting period.
 - **Medium Care LOS** - is the average amount of time spent in medium care programs for youth discharged from NYC during the reporting period.
 - **Community LOS** - is the average amount of time spent in community programs for youth discharged from NYC during the reporting period.
 - **Residential LOS** - is the average amount of time spent in all residential programs (assessment, orientation, intensive secure, medium care, and community programs) for youth discharged from NYC during the reporting period.
 - **Parole LOS** - is the average amount of time spent on parole for youth discharged from NYC during the reporting period.
 - **Total Commitment LOS** - is the average amount of time in NYC custody (sentence start date to discharge date) for all youth discharged from NYC during the reporting period.

6. Number of Clients Served - refers to the total number of youth served in a particular program during the reporting period. Total clients served in a given category (e.g. intensive secure, medium care, or community) represents unduplicated counts of clients served in those categories. Since youth can be served in more than one type of program in the course of a year, the total clients served in a particular category will not equal the sum of the clients served in each program.

D. Commitment Classification:

An objective commitment classification instrument is administered during assessment to guide the placement decisions concerning the type of commitment program most suitable for individual youth given the severity of their commitment offense coupled with the risk of reoffending.

II. DETENTION DEFINITIONS

Detention facilities hold youth who are awaiting trial, serving detention sentences or awaiting commitment placement (either institutional or community based).

A. Detention Legal Status:

- 1. Preadjudicated** - is the legal status of youth pending delinquency adjudication decisions. Often these youth are referred to as pre-trial youth since they are generally admitted pending some court action.
- 2. Sentenced** - is the legal status of youth who received a court imposed sanction in detention or boot camp as a result of an adjudicatory hearing which determined that a delinquent act had been committed. Major sentence types include probation sentences, traffic sentences, municipal sentences, game and fish sentences, contempt sentences, and 703H (sentences to detention that are not conditions of probation).
- 3. Return Commitment** - is the legal status of youth who were previously committed to the Department of Human Services and who have not yet been discharged. The reasons for admission into a detention center vary for these youth. The most common reasons include awaiting court action on new offenses, awaiting placement into a commitment program following a court or community review board decision, or awaiting a parole board action on a suspension or revocation hearing.
- 4. New Commitment** – is the legal status of newly committed youth in detention pending comprehensive assessment which will guide placement into a commitment program.

B. Special Programs for Detained Youth:

1. **Boot Camp** - is a 60-day Regimented Juvenile Training Program (RJTP) with an 80 bed capacity. The RJTP was relocated to the grounds of the Colorado Mental Health Institute in Pueblo from Golden, CO at the end of FY1995-96.
2. **Staff Secure Programs** – Privately-operated staff secure programs provide 24-hour line-of-sight supervision of youth. There were 13 staff secure programs in Colorado serving detained youth under DYC private contracts in FY1997-98, with an average total of 72 beds statewide.

C. Detention Service Measures:

The Management Reference Manual summarizes population trends and characteristics of populations served in detention facilities operated or contracted by the Division of Youth Corrections, using specific measures. The measures used to describe the detention population are:

- number of new admissions to detention
- average daily population (ADP)
- average length of stay (LOS)
- number of clients served

These measures are described below:

1. **Number of New Admissions to Detention** - is the number of youth who have been admitted to state-operated or contracted detention programs or facilities (excluding jails) in the reported time period. **Note:** The same youth can be admitted to the same facility multiple times during the same time period.
2. **Average Daily Population** - is the average number of youth present in a detention facility or program during the reporting period.
3. **Average Length of Stay** - is the average amount of time spent in a detention facility or program during the time period. *All detention LOS figures are measured in days.*
4. **Number of Clients Served** - is the total number of youth served in a particular program during the reporting period. Total clients served in a facility or program (e.g. Adams YSC, Boot Camp, or staff secure detention) represents unduplicated counts of clients served in those facilities. Since youth can be served in more than one particular facility in the course of a year, the total clients served in all facilities will not equal the sum of the clients served in each facility.

EXECUTIVE SUMMARY

The Management Reference Manual is designed to provide statistical information on youth served by the Division of Youth Corrections (DYC) during FY1997-98. Section I contains statewide population statistics while Sections II and III provide detailed population statistics describing the commitment and detention program services, respectively. Section IV contains population statistics for each of the five management regions established in 1986. Trends in population data and client demographic characteristics are included in each section. Unless otherwise noted, all data for this report are extracted from the DYC Client Data System. A summary of key statistics provided in the report are discussed below.

I. STATE TOTALS

A. Clients Served¹

- There were 9,579 youth served in DYC programs during fiscal year 1997-98; 8,785 youth in detention programs and 2,046 youth served in commitment programs.
- State-operated detention programs served a total of 7,637 youth during FY1997-98.
- Secure and medium secure residential commitment programs served 1,661 youth during the year.
- Community residential programs served 630 youth in fiscal year 1997-98.
- There were 725 youth served on parole during the fiscal year.

B. DYC Population Summary

- There was an average daily population (ADP) of 1,820 youth in DYC custody during FY1997-98.
- There were 15,428 new detention admissions and 781 new commitments in FY1997-98.

II. COMMITMENT POPULATION TRENDS AND CHARACTERISTICS

A. Population Trends

- The number of youth entering DYC commitment programs has increased at twice the growth rate of 10-17 year olds in the general population; the number of 10-17 year olds has grown by 33 percent since 1988 while the number of youth entering DYC commitment programs has increased by 65 percent.
- There was an ADP of 1,228 youth in commitment programs in FY1997-98; 973 in residential programs and 255 on parole.
- Thirty percent of the commitment residential ADP was served in state-operated commitment programs and 70 percent was served in contracted programs.
- Average residential length of stay (LOS) increased significantly from 14.5 months in FY1996-97 to 15.1 months in FY1997-98.
- As LOS increases, so too does the ADP in residential programs; residential ADP has increased by 135 percent during the past ten years, outpacing the rate of increase in the number of new commitments.

¹ Clients served represents the total number of youth served in a particular program during the reporting period. Total clients served in a given category (e.g. detention or commitment programs) represents unduplicated counts of clients served in those categories. Since youth can be served in more than one type of program in the course of a year, the total clients served in a particular category will not necessarily equal the sum of the clients served in each program.

- Since FY1992-93, the percentage of youth assessed for medium secure placement has steadily increased from 38 percent to 47 percent of the total new commitment population.
- The percentage of youth assessed for community placement has decreased steadily during this same time period, from 35 percent in FY1992-93 to 28 percent in FY1997-98.
- Length of stay on parole has decreased during the past three years from an average of 9.1 months in FY1995-96 to 6.8 months in FY1997-98.

B. Population Characteristics

1. Gender

- Ninety-two percent of the average daily population in residential placements were male in FY1997-98.
- The number of females committed to DYC increased by 49 percent compared with FY1996-97. However, the number of male new commitments decreased by 2 percent during the same time period.
- The number of females committed for person offenses more than doubled compared with FY1996-97.
- Males discharged from custody during the fiscal year had spent an average of 2.4 months longer in residential programs compared to females.

2. Ethnicity

- Anglo-American youth (49 percent) represented the largest single ethnic group in residential programs followed by Hispanic/Latinos (33 percent), and African-Americans (15 percent).

3. Age²

- The average age of youth at commitment has increased slightly during the past three years from 16.2 years in FY1995-96 to 16.4 years in FY1997-98.
- Seventeen year olds were the largest single age group entering DYC commitment programs in FY1997-98.
- The average age at first adjudication among new commitments was 14.2 years.

4. Other Characteristics

- Slightly more than half (56 percent) of the youth committed in FY1997-98 were sentenced as nonmandatory offenders.
- Fifty-eight percent of new commitments had been placed out-of-home at least twice prior to commitment.
- Sixty-three percent of new commitments had a history of running away during the 12 months prior to being committed. Eighty-one percent of female new commitments had a history of running away prior to commitment.
- Eighty-five percent of new commitments were identified during assessment as in need of drug/alcohol services. However, only 6 percent of new commitments were committed for drug offenses.
- Seventy-seven percent of new commitments had at least one previous adjudication prior to their current commitment.

² Average age at commitment has been recalculated for the past three years and are slightly higher than figures reported in previous manuals. In prior years these calculations were based on discrete (e.g., 16 years) values for age and are now based on continuous (e.g., 16.487) values.

III. DETENTION POPULATION TRENDS AND CHARACTERISTICS

A. Population Trends

- The number of youth in NYC detention facilities has increased at a significantly faster pace than the growth rate of 10-17 year olds in the general population. The number of 10-17 year olds has grown by 33 percent since 1988 while the average number of youth in NYC detention facilities on any given day has increased by 181 percent.
- The ADP in state-operated detention programs represented 76 percent of the total detention ADP; state-operated detention programs maintained an ADP of 451 youth in FY1997-98.
- The average length of stay (LOS) in detention facilities has been increasing steadily since FY1987-88; from 7.6 days to 13.9 days.
- As LOS in detention increases, so too does the average daily detention population; detention ADP has increased by 181 percent during the past ten years, outpacing the rate of increase in the number of new detention admissions.

B. Population Characteristics

1. *Gender*

- Eighty-four percent of the ADP in detention facilities in FY1997-98 were male.
- The LOS for males released from detention was an average of 5.4 days longer compared to females.

2. *Ethnicity*

- Anglo-American youth (47 percent) represented the largest single ethnic group in NYC detention facilities, followed by Hispanic/Latinos (33 percent), and African-Americans (16 percent).

3. *Age*³

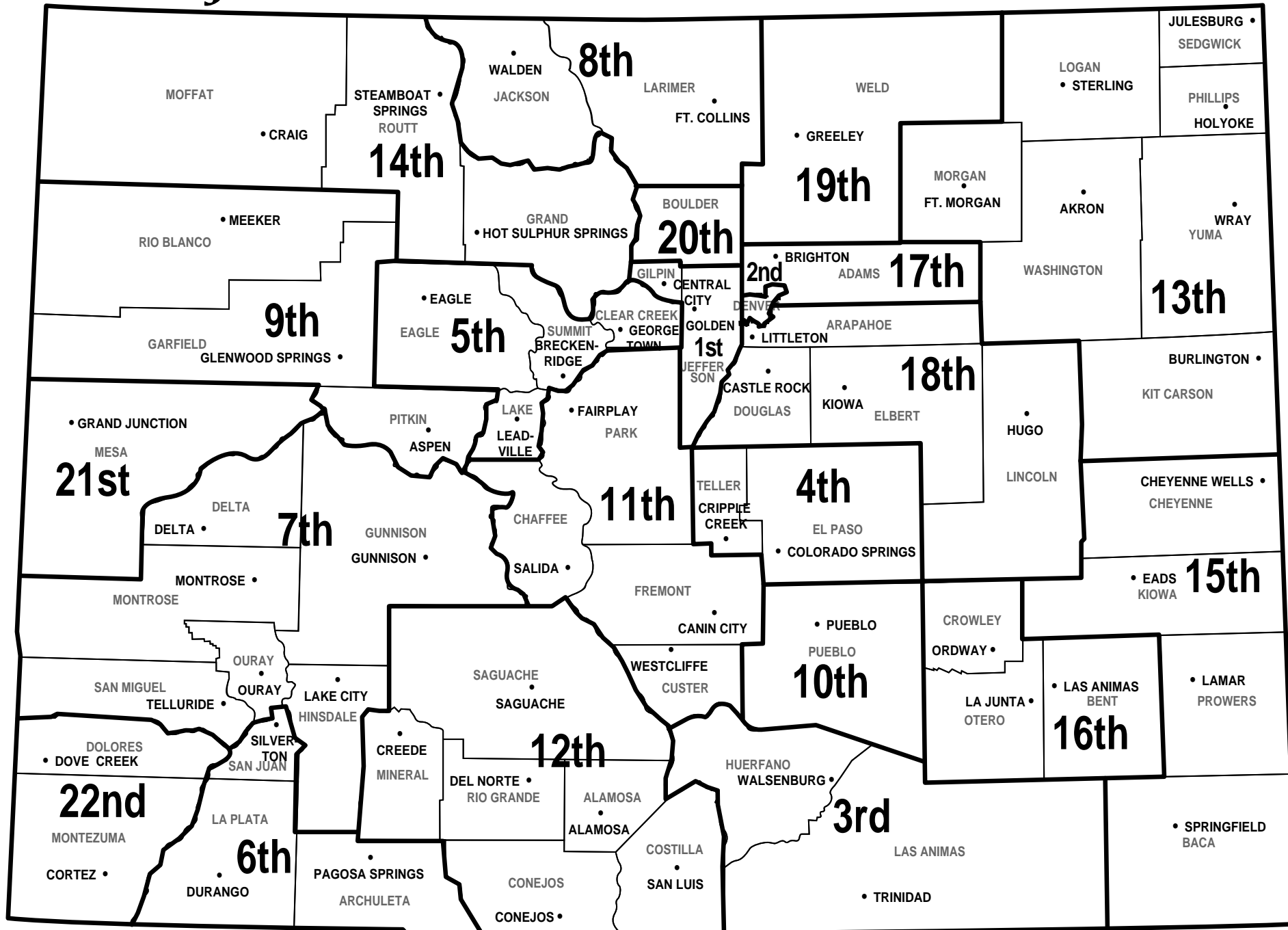
- The average age at detention admission has remained stable at 16.0 years since FY1995-96.
- Almost 28 percent of the youth entering detention facilities were age 17.

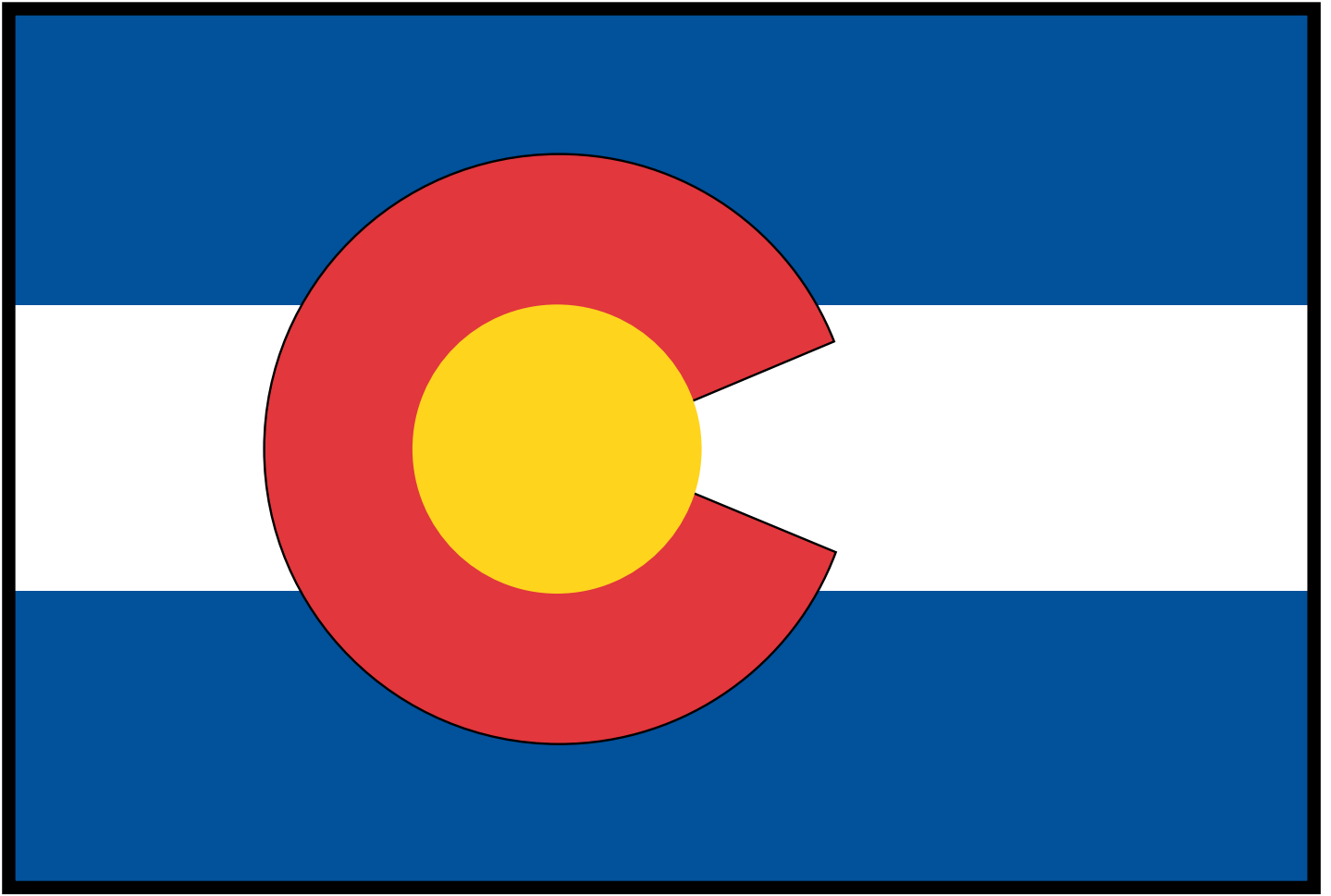
4. *Reasons Held/Legal Status*

- Seventy-one percent of the detention ADP during FY1997-98 was admitted due to court (46 percent) or police (25 percent) action.
- More than half of the detention ADP was preadjudicated (58 percent) followed by sentenced (21 percent) and committed (21 percent).
- Twenty-six percent of the preadjudicated youth in detention facilities during last fiscal year were there based on mandatory felony holds.
- Forty-one percent were being held on delinquency charges.
- The remaining preadjudicated youth were being detained on failure to appear warrants (17 percent) or for probation violations (16 percent).

³ Average age at detention admission has been recalculated for the past three years and are slightly higher than figures reported in previous manuals. In prior years these calculations were based on discrete (e.g., 16 years) values for age and are now based on continuous (e.g., 16.487) values.

Judicial Districts of Colorado



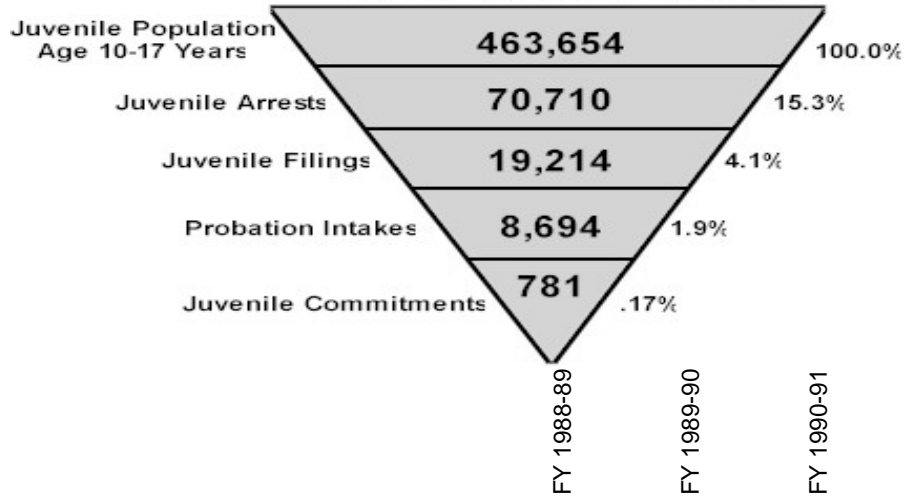


SECTION I

COLORADO STATE TOTALS

JUVENILE JUSTICE FILTERING PROCESS TO COMMITMENT

Number of Youths FY1997-98



| | FY 1988-89 | FY 1989-90 | FY 1990-91 | FY 1991-92 | FY 1992-93 | FY 1993-94 | FY 1994-95 | FY 1995-96 | FY 1996-97 | FY 1997-98 |
|---|------------|------------|------------|------------|------------|------------|------------|------------|------------|------------|
| Age 10-17 Population ¹ | 349,566 | 347,800 | 362,800 | 369,036 | 377,504 | 394,058 | 416,646 | 429,955 | 437,908 | 463,654 |
| Juvenile Arrests ² | 44,679 | 48,403 | 51,884 | 54,626 | 53,595 | 55,012 | 56,199 | 59,884 | 60,755 | 70,710 |
| Arrests as % of population | 12.8% | 13.9% | 14.3% | 14.8% | 14.2% | 14.0% | 13.5% | 13.9% | 13.9% | 15.3% |
| ω Juvenile Delinquency Filings ³ | 9,564 | 11,039 | 10,710 | 12,718 | 11,911 | 12,570 | 15,175 | 17,577 | 19,063 | 19,214 |
| Filings as % of Arrests | 21.4% | 22.8% | 20.6% | 23.3% | 22.2% | 22.8% | 27.0% | 29.4% | 31.4% | 27.2% |
| Number of Probation Intakes | 5,024 | 5,367 | 5,753 | 6,377 | 6,669 | 6,858 | 7,174 | 7,201 | 7,753 | 8,694 |
| Intakes as % of Filings | 52.5% | 48.6% | 53.7% | 50.1% | 56.0% | 54.6% | 47.3% | 41.0% | 40.7% | 45.2% |
| Number of Commitments ⁴ | 474 | 509 | 543 | 607 | 542 | 552 | 606 | 693 | 762 | 781 |
| Commitments as % of Intakes | 9.4% | 9.5% | 9.4% | 9.5% | 8.1% | 8.0% | 8.4% | 9.6% | 9.8% | 9.0% |
| Commitments as % of Population | 0.14% | 0.15% | 0.15% | 0.16% | 0.14% | 0.14% | 0.15% | 0.16% | 0.17% | 0.17% |

¹Colorado State Division of Local Government. Population data are reported for calendar years. Population data for calendar years 1988-1989 are based upon the 1980 census. Population data for 1990 are based upon the 1990 census, and population data for 1991-1997 are projected from the 1990 data. **Note:** House Bill 96-1005 passed during FY1996-97 allows for commitment of ten year olds. Commitment rates from previous years have therefore been adjusted to reflect a larger population base. In reports from prior years, commitment rates were calculated based on a population of 12-17 year olds.

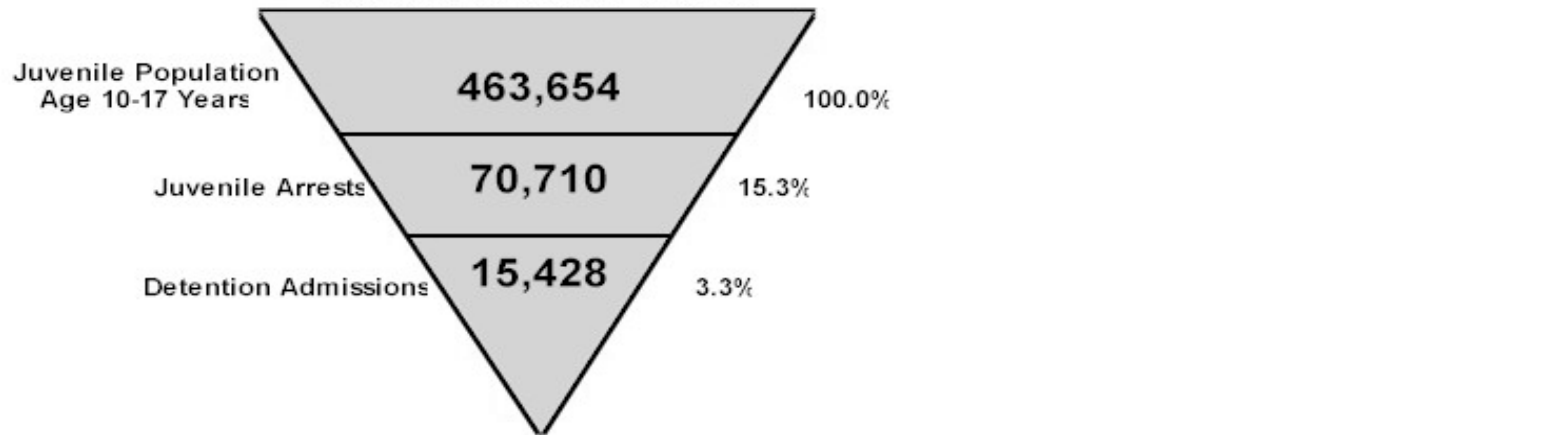
²Colorado Bureau of Investigation, 'Uniform Crime Report,' 1987 thru 1997 calendar years.

³Includes only Delinquency and CHINS (CHINOS) filings and new cases on probation supervision. Colorado Judicial Branch Annual Report Statistical Supplement: Fiscal Years 1988-89 thru 1997-98

⁴Includes only new commitments. Division of Youth Corrections.

JUVENILE JUSTICE FILTERING PROCESS TO DETENTION

Number of Youth FY199-98



| | FY 1988-89 | FY 1989-90 | FY 1990-91 | FY 1991-92 | FY 1992-93 | FY 1993-94 | FY 1994-95 | FY 1995-96 | FY 1996-97 | FY 1997-98 |
|-----------------------------------|------------|------------|------------|------------|------------|------------|------------|------------|------------|------------|
| Age 10-17 population ¹ | 349,566 | 347,800 | 362,136 | 369,036 | 377,504 | 394,058 | 416,646 | 429,955 | 437,908 | 463,654 |
| Juvenile Arrests ² | 44,679 | 48,403 | 51,884 | 54,626 | 53,595 | 55,012 | 56,199 | 59,884 | 60,755 | 70,710 |
| Arrests as % of population | 12.8% | 13.9% | 14.3% | 14.8% | 14.2% | 14.0% | 13.5% | 13.9% | 13.9% | 15.3% |
| Detention Admissions ³ | 8,631 | 10,333 | 11,402 | 11,988 | 12,388 | 16,197 | 16,638 | 13,858 | 14,652 | 15,428 |
| Admissions as % of Arrests | 19.3% | 21.3% | 22.0% | 21.9% | 23.1% | 29.4% | 29.6% | 23.1% | 24.1% | 21.8% |
| Admissions as % of Population | 2.5% | 3.0% | 3.1% | 3.2% | 3.3% | 4.1% | 4.0% | 3.2% | 3.3% | 3.3% |

¹Colorado State Division of Local Government. Population data are reported for calendar years. Population data for calendar years are based upon the 1980 census. Population data for 1990 are based upon the 1990 census, and population data for 1991-1998 are from the 1990 data.

²Colorado Bureau of Investigation, Uniform Crime Report, 1987 thru 1997 calendar years.

³A cap imposed on Gilliam YSC by the Federal Court in FY 1995-96 resulted in decreased detention admissions.

CAPACITY IN COMMITMENT PROGRAM SERVICES

FY 1997-98

| PROGRAM | 1997 | | | | | | 1998 | | | | | |
|-----------------------------|------------|------------|------------|------------|------------|------------|------------|--------------|--------------|--------------|--------------|--------------|
| | July | Aug | Sept | Oct | Nov | Dec | Jan | Feb | Mar | Apr | May | Jun |
| ASSESSMENT: | | | | | | | | | | | | |
| Grand Mesa | 4 | 4 | 4 | 4 | 4 | 4 | 4 | 4 | 4 | 4 | 4 | 4 |
| Mount View | 26 | 26 | 26 | 26 | 26 | 26 | 26 | 26 | 26 | 26 | 26 | 26 |
| Platte Valley ¹ | 0 | 0 | 0 | 0 | 5 | 10 | 10 | 10 | 10 | 10 | 10 | 10 |
| Zeb Pike | 5 | 5 | 5 | 5 | 5 | 5 | 5 | 5 | 5 | 5 | 5 | 5 |
| TOTAL ASSESSMENT | 35 | 35 | 35 | 35 | 40 | 45 | 45 | 45 | 45 | 45 | 45 | 45 |
| TOTAL ORIENTATION | 80 | 80 | 80 | 80 | 80 | 80 | 80 | 80 | 80 | 80 | 80 | 80 |
| INTENSIVE SECURE: | | | | | | | | | | | | |
| State Operated: | | | | | | | | | | | | |
| Grand Mesa | 30 | 30 | 30 | 30 | 30 | 30 | 30 | 30 | 30 | 30 | 30 | 30 |
| Lookout Mountain | 152 | 152 | 152 | 152 | 152 | 152 | 152 | 152 | 152 | 152 | 152 | 152 |
| Platte Valley | 0 | 0 | 0 | 0 | 55 | 50 | 50 | 50 | 50 | 50 | 50 | 50 |
| Spring Creek ² | 0 | 0 | 0 | 0 | 0 | 0 | 0 | 40 | 40 | 40 | 40 | 40 |
| Zeb Pike ³ | 0 | 0 | 0 | 0 | 0 | 0 | 0 | 0 | 0 | 0 | 0 | 18 |
| Subtotal State Operated | 182 | 182 | 182 | 182 | 237 | 232 | 232 | 272 | 272 | 272 | 272 | 290 |
| Contracted: | | | | | | | | | | | | |
| El Pueblo Boys Ranch | 9 | 9 | 9 | 9 | 9 | 9 | 9 | 9 | 9 | 10 | 10 | 10 |
| Glen Mills | 60 | 60 | 60 | 60 | 60 | 60 | 60 | 60 | 51 | 51 | 51 | 51 |
| Grand Prairie | 39 | 39 | 39 | 39 | 39 | 39 | 39 | 39 | 39 | 39 | 39 | 39 |
| High Plains ⁴ | 53 | 53 | 53 | 53 | 53 | 53 | 53 | 53 | 53 | 0 | 0 | 0 |
| Rite of Passage | 26 | 26 | 26 | 26 | 26 | 26 | 26 | 26 | 26 | 35 | 35 | 35 |
| Sierra Vista | 20 | 20 | 20 | 20 | 20 | 20 | 20 | 20 | 20 | 20 | 20 | 20 |
| Youth Services Interational | 0 | 0 | 0 | 0 | 0 | 0 | 0 | 0 | 0 | 20 | 20 | 20 |
| Subtotal Contracted | 207 | 207 | 207 | 207 | 207 | 207 | 207 | 207 | 198 | 175 | 175 | 175 |
| TOTAL INTENSIVE | 389 | 389 | 389 | 389 | 444 | 439 | 439 | 479 | 470 | 447 | 447 | 465 |
| MEDIUM CARE: | | | | | | | | | | | | |
| State Operated: | | | | | | | | | | | | |
| Grand Mesa - Orientation | 6 | 6 | 6 | 6 | 6 | 6 | 6 | 6 | 6 | 6 | 6 | 6 |
| Lathrop Park | 27 | 27 | 27 | 27 | 0 | 0 | 0 | 0 | 0 | 0 | 0 | 0 |
| Subtotal State Operated | 33 | 33 | 33 | 33 | 6 | 6 | 6 | 6 | 6 | 6 | 6 | 6 |
| Contracted: | | | | | | | | | | | | |
| Aspen | 24 | 24 | 24 | 24 | 24 | 24 | 24 | 24 | 30 | 30 | 30 | 31 |
| Cedar Springs | 7 | 7 | 7 | 7 | 7 | 7 | 7 | 7 | 7 | 7 | 7 | 7 |
| Centennial Peaks | 17 | 17 | 17 | 17 | 17 | 17 | 17 | 17 | 18 | 18 | 19 | 19 |
| Colorado West | 13 | 13 | 13 | 13 | 13 | 13 | 13 | 13 | 12 | 12 | 12 | 12 |
| Copper Hills | 0 | 0 | 0 | 0 | 0 | 0 | 0 | 0 | 2 | 2 | 2 | 2 |
| DAYS/Reflections | 25 | 25 | 25 | 25 | 25 | 25 | 25 | 25 | 25 | 25 | 25 | 25 |
| Foothills | 25 | 25 | 25 | 25 | 25 | 25 | 25 | 25 | 25 | 25 | 25 | 25 |
| Fort Logan North Star | 0 | 0 | 0 | 0 | 0 | 0 | 0 | 0 | 5 | 5 | 5 | 5 |
| Hilltop West | 12 | 12 | 12 | 12 | 12 | 12 | 12 | 12 | 12 | 13 | 13 | 13 |
| Jefferson Hills Aurora | 32 | 32 | 32 | 32 | 32 | 32 | 32 | 32 | 37 | 37 | 37 | 37 |
| Jefferson Hills Lkwd | 46 | 46 | 46 | 46 | 46 | 46 | 46 | 46 | 46 | 46 | 46 | 46 |
| Provo Canyon | 10 | 10 | 10 | 10 | 15 | 15 | 15 | 15 | 20 | 20 | 20 | 20 |
| Teen Quest | 20 | 20 | 20 | 20 | 20 | 20 | 20 | 20 | 20 | 20 | 20 | 20 |
| Per Diem | 2 | 2 | 2 | 2 | 2 | 2 | 2 | 2 | 2 | 2 | 2 | 2 |
| Subtotal Contracted | 233 | 233 | 233 | 233 | 238 | 238 | 238 | 238 | 261 | 262 | 263 | 264 |
| TOTAL MEDIUM | 266 | 266 | 266 | 266 | 244 | 244 | 244 | 244 | 267 | 268 | 269 | 270 |
| TOTAL COMMUNITY | 163 | 163 | 163 | 163 | 171 | 171 | 171 | 174 | 185 | 200 | 201 | 202 |
| TOTAL BEDS | 933 | 933 | 933 | 933 | 979 | 979 | 979 | 1,022 | 1,047 | 1,040 | 1,042 | 1,062 |

¹Platte Valley YSC opened in November 1997 as a combined detention and commitment facility in Greeley.

²Spring Creek YSC opened in February 1998 as a combined detention and commitment facility in Colorado Springs.

³Zeb Pike began accepting committed youth in June, 1998 and will be converted into an intensive secure facility serving exclusively committed youth in FY1998-99. Simultaneously, Spring Creek will function solely as a detention facility.

⁴The privately operated High Plains facility in Brush lost its State RCCF licensing in March 1998.

**CAPACITY IN DETENTION PROGRAMS
FY 1997-98**

| | 1997 | | | | | | 1998 | | | | | |
|--------------------------------|------|-----|------|-----|-----|-----|------|-----|-----|-----|-----|-----|
| | July | Aug | Sept | Oct | Nov | Dec | Jan | Feb | Mar | Apr | May | Jun |
| STATE OPERATED | | | | | | | | | | | | |
| Adams YSC | 24 | 24 | 24 | 24 | 24 | 24 | 24 | 24 | 24 | 24 | 24 | 24 |
| Gilliam YSC | 78 | 78 | 78 | 78 | 78 | 78 | 78 | 78 | 78 | 78 | 78 | 78 |
| Grand Mesa YSC | 20 | 20 | 20 | 20 | 20 | 20 | 20 | 20 | 20 | 20 | 20 | 20 |
| Marvin Foote YSC | 108 | 108 | 108 | 108 | 108 | 108 | 108 | 108 | 108 | 108 | 108 | 108 |
| Mount View YSC | 72 | 72 | 72 | 72 | 72 | 72 | 72 | 72 | 72 | 72 | 72 | 72 |
| Platte Valley YSC ¹ | 0 | 0 | 0 | 0 | 60 | 60 | 60 | 60 | 60 | 60 | 60 | 60 |
| Pueblo YSC | 36 | 36 | 36 | 36 | 36 | 36 | 36 | 36 | 36 | 36 | 36 | 36 |
| Spring Creek YSC ² | 0 | 0 | 0 | 0 | 0 | 0 | 0 | 60 | 60 | 60 | 60 | 60 |
| Zeb Pike YSC | 27 | 27 | 27 | 27 | 27 | 27 | 27 | 27 | 27 | 27 | 27 | 27 |
| Subtotal State Operated | 365 | 365 | 365 | 365 | 425 | 425 | 425 | 485 | 485 | 485 | 485 | 485 |
| CONTRACTED | | | | | | | | | | | | |
| Staff Secure Detention | 78 | 71 | 71 | 71 | 71 | 71 | 71 | 71 | 71 | 71 | 71 | 71 |
| Boot Camp | 80 | 80 | 80 | 80 | 80 | 80 | 80 | 80 | 80 | 80 | 80 | 80 |
| Subtotal Contracted | 158 | 151 | 151 | 151 | 151 | 151 | 151 | 151 | 151 | 151 | 151 | 151 |
| TOTAL DETENTION | 523 | 516 | 516 | 516 | 576 | 576 | 576 | 636 | 636 | 636 | 636 | 636 |

¹Platte Valley YSC opened in November 1997 as a combined detention and commitment facility in Greeley.

²Spring Creek YSC opened in February 1998 as a combined detention and commitment facility in Colorado Springs. In FY1998-99, Spring Creek will function primarily as a detention facility with some assessment capacity for committed youth.

DIVISION OF YOUTH CORRECTIONS

**ALL CLIENTS
POPULATION DATA**

FY 1997-98

| | Clients Served¹ | Admissions | ADP | LOS² (months) |
|-------------------------|---------------------------------------|-------------------|------------|-------------------------------------|
| COMMITTED YOUTH | | | | |
| Assessment | 675 | | 50.0 | 1.0 |
| Orientation | 502 | | 72.8 | 1.9 |
| Intensive Secure | 1,057 | | 426.9 | 11.4 |
| Medium Care | 1,089 | | 250.6 | 6.3 |
| Community Programs | 630 | | 173.2 | 5.2 |
| Parole ³ | 725 | | 255.0 | 6.8 |
| Subtotal Committed | 2,046 | | 1,228.5 | 22.1 |
| DETAINED YOUTH | | | | |
| | | | | LOS (days) |
| State-Operated | 7,637 | 12,750 | 450.7 | 13.3 |
| Contracted Staff Secure | 1,844 | 2,227 | 63.2 | 9.1 |
| Boot Camp | 518 | 451 | 77.9 | 58.0 |
| Subtotal Detained | 8,785 | 15,428 | 591.8 | 13.9 |
| TOTAL | 9,579 | | 1,820.3 | |

¹Clients served counts are unduplicated.

²Lengths of stay are defined on page iv.

³Youth participating in the Interstate Compact Program are included in clients served.



SECTION II

**COMMITMENT POPULATION
TRENDS AND CHARACTERISTICS**

DIVISION OF YOUTH CORRECTIONS

**COMMITTED YOUTH
POPULATION TRENDS**

FY 1987-88 through FY 1997-98

| Fiscal Year | Number of | | No. of New Commitments | Percentage | | ADP ² | Discharges ³ | | Percentage Change +/- |
|-------------|--------------------------------|--------------------------|---------------------------|--------------------------|--------------------------|------------------|-------------------------|------|--------------------------|
| | Clients Served ¹ | Percentage Change +/- | | Percentage Change +/- | Percentage Change +/- | | N | LOS | |
| 1987-88 | N/A | | 390 | | 414.9 | | 443 | 12.2 | |
| 1988-89 | N/A | | 474 | 21.5% | 438.7 | 5.7% | 470 | 11.8 | -3.3% |
| 1989-90 | 1,340 | | 509 | 7.4% | 512.9 | 16.9% | 392 | 12.3 | 4.2% |
| 1990-91 | 1,492 | 11.3% | 543 | 6.7% | 542.8 | 5.8% | 480 | 12.8 | 4.1% |
| 1991-92 | 1,599 | 7.2% | 607 | 11.8% | 563.4 | 3.8% | 490 | 13.0 | 1.6% |
| 1992-93 | 1,637 | 2.4% | 542 | -10.7% | 609.3 | 8.1% | 559 | 12.1 | -6.9% |
| 1993-94 | 1,622 | -0.9% | 552 | 1.8% | 612.5 | 0.5% | 580 | 13.0 | 7.4% |
| 1994-95 | 1,638 | 1.0% | 606 | 9.8% | 633.9 | 3.5% | 557 | 13.8 | 6.2% |
| 1995-96 | 1,769 | 8.0% | 693 | 14.4% | 762.9 | 20.4% | 620 | 13.7 | -0.7% |
| 1996-97 | 1,891 | 6.9% | 762 | 10.0% | 929.3 | 21.8% | 622 | 14.5 | 5.8% |
| 1997-98 | 2,046 | 8.2% | 781 | 2.5% | 973.5 | 4.8% | 682 | 15.1 | 4.1% |

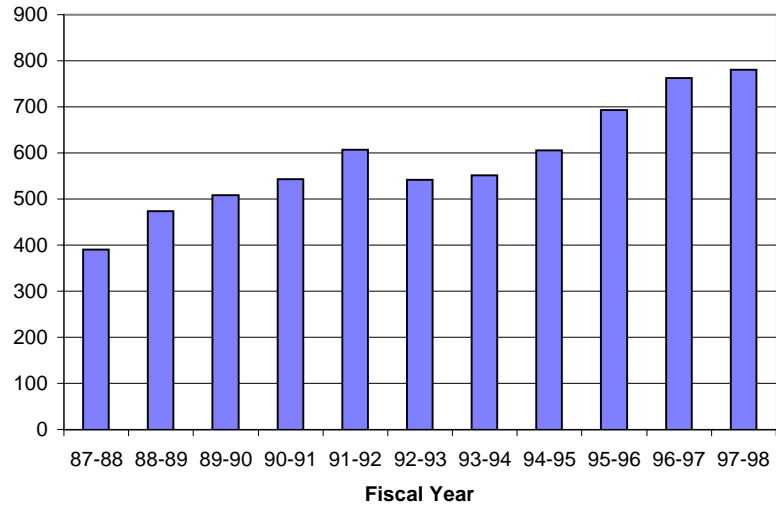
¹Clients served counts are unduplicated. Figures not available prior to FY89-90.

²ADP: Includes assessment, orientation (beginning in FY1996-97), intensive secure, medium care, and community residential.

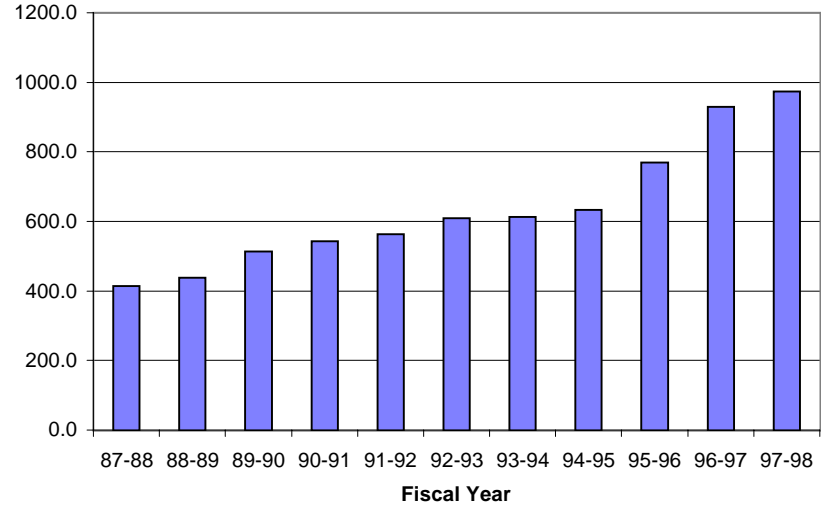
³Numbers may differ from prior manuals since LOS is now calculated at 'discharge' rather than 'release' from residential care.

DIVISION OF YOUTH CORRECTIONS
Trends in Commitment Populations
FY1987-88 thru FY 1997-98

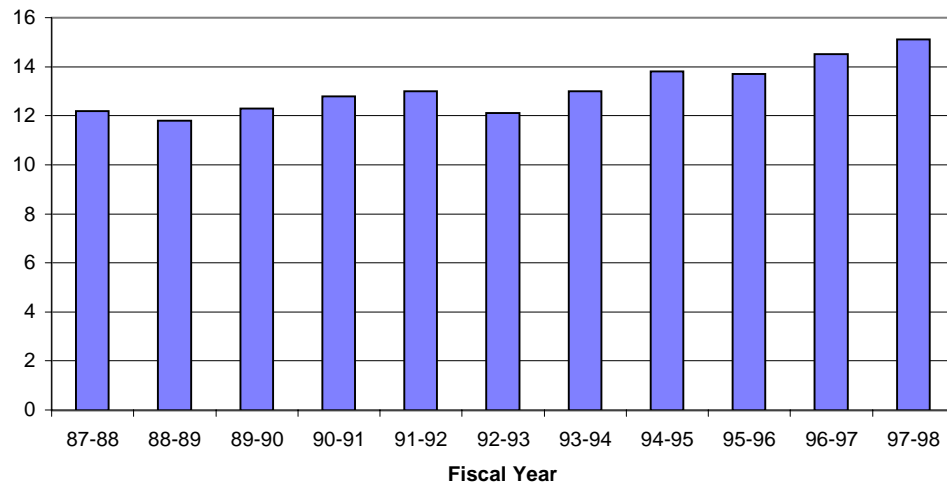
TRENDS IN NEW COMMITMENTS



TRENDS IN RESIDENTIAL ADP



TRENDS IN RESIDENTIAL LOS



DIVISION OF YOUTH CORRECTIONS
COMMITMENT POPULATION TRENDS BY PROGRAM TYPE

FY 1995-96 through FY 1997-98

| | FY 1995-96 | | | FY 1996-97 | | | FY 1997-98 | | |
|--|---------------------|------------------|-------------|---------------------|------------------|-------------|---------------------|------------------|-------------|
| | No. of | Res. | | No. of | Res. | | No. of | Res. | |
| | Clients | LOS ² | | Clients | LOS ² | | Clients | LOS ² | |
| | Served ¹ | ADP (mos.) | | Served ¹ | ADP (mos.) | | Served ¹ | ADP (mos.) | |
| ASSESSMENT³: | | | | | | | | | |
| Grand Mesa YSC | 101 | 7.1 | 1.0 | 129 | 8.8 | 0.9 | 127 | 9.8 | 0.9 |
| Mount View YSC | 509 | 48.3 | 1.0 | 497 | 41.4 | 1.0 | 237 | 17.9 | 1.2 |
| Platte Valley YSC ⁴ | -- | -- | -- | -- | -- | -- | 105 | 6.4 | 0.3 |
| Zeb Pike YSC | 176 | 10.2 | 0.3 | 196 | 11.8 | 0.8 | 213 | 15.9 | 0.4 |
| TOTAL ASSESSMENT | 784 | 65.6 | 1.0 | 819 | 62.0 | 1.0 | 675 | 50.0 | 1.0 |
| TOTAL ORIENTATION⁵ | -- | -- | -- | 411 | 61.7 | 1.8 | 502 | 72.8 | 1.9 |
| INTENSIVE SECURE: | | | | | | | | | |
| State Operated: | | | | | | | | | |
| Grand Mesa YSC | 114 | 22.5 | 3.7 | 135 | 26.9 | 2.8 | 174 | 31.2 | 4.5 |
| Lookout Mountain YSC | 347 | 189.4 | 14.4 | 328 | 175.7 | 15.5 | 308 | 155.3 | 13.3 |
| Platte Valley YSC ⁴ | -- | -- | -- | -- | -- | -- | 215 | 45.8 | 2.2 |
| Spring Creek YSC ⁶ | -- | -- | -- | -- | -- | -- | 43 | 11.0 | 0.9 |
| Zeb Pike YSC | -- | -- | -- | -- | -- | -- | 48 | 2.0 | NA |
| Subtotal State Operated | 461 | 211.9 | NA | 460 | 202.6 | NA | 738 | 245.3 | NA |
| Privately Contracted: | | | | | | | | | |
| Colorado Boys Ranch | 3 | 0.4 | 6.8 | 1 | 0.0 | 5.8 | 0 | 0.0 | 0.0 |
| El Pueblo | 0 | 0.0 | 5.4 | 17 | 8.9 | 7.9 | 23 | 9.7 | 10.0 |
| Glen Mills | 67 | 39.3 | 13.7 | 96 | 58.1 | 17.1 | 94 | 48.0 | 14.5 |
| Grand Prairie | 81 | 37.5 | 6.8 | 82 | 37.8 | 9.1 | 76 | 38.1 | 10.6 |
| High Plains | 112 | 52.9 | 13.0 | 119 | 59.5 | 9.9 | 101 | 39.8 | 11.9 |
| Rite of Passage | 35 | 21.1 | 14.5 | 41 | 25.5 | 12.9 | 54 | 24.6 | 13.2 |
| Sierra Vista | -- | -- | -- | 32 | 9.3 | NA | 48 | 18.8 | 6.4 |
| Youth Services International | -- | -- | -- | -- | -- | -- | 23 | 2.6 | NA |
| Subtotal Private Contract | 295 | 151.2 | NA | 369 | 199.1 | NA | 405 | 181.6 | NA |
| TOTAL INTENSIVE SECURE | 747 | 363.1 | 11.9 | 808 | 401.7 | 11.2 | 1,057 | 426.9 | 11.4 |
| MEDIUM CARE: | | | | | | | | | |
| State Operated: | | | | | | | | | |
| Grand Mesa - Orien | 29 | 2.2 | 1.1 | 52 | 4.5 | 1.1 | 10 | 0.9 | 1.3 |
| Lathrop Park YSC | 99 | 30.6 | 5.0 | 80 | 25.8 | 5.0 | 15 | 0.7 | 5.5 |
| Subtotal State Operated | 128 | 32.8 | NA | 132 | 30.3 | NA | 25 | 1.6 | NA |
| Privately Contracted: | | | | | | | | | |
| Aspen | 121 | 19.4 | 2.3 | 179 | 25.9 | 2.2 | 201 | 29.9 | 2.0 |
| Cedar Springs | 15 | 3.4 | NA | 27 | 11.6 | NA | 15 | 6.3 | 8.6 |
| Centennial Peaks | 18 | 5.8 | NA | 38 | 17.5 | NA | 50 | 19.4 | 9.1 |
| Colorado West | 56 | 10.6 | 3.2 | 65 | 12.3 | 3.0 | 68 | 11.7 | 2.8 |
| Copper Hills | -- | -- | -- | -- | -- | -- | 2 | 0.5 | NA |
| DAYS/Reflections | 173 | 24.4 | 3.0 | 214 | 22.8 | 2.0 | 185 | 23.5 | 1.9 |
| Foothills | 95 | 25.1 | 4.1 | 122 | 25.4 | 4.1 | 99 | 24.8 | 4.3 |
| Fort Logan North Star | -- | -- | -- | -- | -- | -- | 6 | 1.3 | NA |
| Hilltop West | 62 | 10.4 | 4.2 | 57 | 12.2 | 2.5 | 53 | 12.4 | 3.8 |
| Jefferson Hills Aurora | -- | -- | -- | 44 | 13.8 | NA | 87 | 31.6 | 6.3 |
| Jefferson Hills Lkwd | 122 | 47.5 | 5.7 | 125 | 50.1 | 6.8 | 119 | 48.9 | 7.4 |
| Provo Canyon | -- | -- | -- | 20 | 8.0 | NA | 43 | 18.6 | 6.3 |
| Teen Quest | 52 | 15.0 | 4.9 | 42 | 19.6 | 7.3 | 43 | 20.1 | 9.9 |
| Subtotal Private Contract | 578 | 161.6 | NA | 717 | 219.2 | NA | 793 | 249.0 | NA |
| TOTAL MEDIUM CARE | 578 | 194.4 | 5.2 | 1,029 | 249.5 | 5.7 | 1,089 | 250.6 | 6.3 |
| COMMUNITY RESIDENTIAL⁷ | | | | | | | | | |
| Contracted | 494 | 138.5 | 5.0 | 533 | 152.7 | 5.3 | 627 | 173.0 | 5.2 |
| Per Diem | 8 | 1.3 | 1.6 | 6 | 1.7 | 2.3 | 3 | 0.2 | 0.5 |
| TOTAL COMMUNITY RESIDENTIAL | 502 | 139.8 | 5.0 | 537 | 154.4 | 5.3 | 630 | 173.2 | 5.2 |
| TOTAL RESIDENTIAL | NA | 762.9 | 13.7 | NA | 929.3 | 14.5 | NA | 973.5 | 15.1 |

¹Clients served is defined on page iv. Totals on this page for clients served are unduplicated.

²Residential LOS is the average length of stay in months for youth discharged during the time period. Only those youth who spent any time in a program/facility are included in the LOS calculations.

³Some youth were held in detention when the assessment population went beyond capacity. ADP for these youth are included in detention rather than assessment. An additional 1.3 ADP were held in the Marvin Foote Youth Services Center.

⁴Platte Valley YSC opened in November 1997 as a combined detention and commitment facility in Greeley.

⁵The Orientation program at LMYSC was opened on July 1, 1996.

⁶Spring Creek YSC opened in February 1998 as a combined detention and commitment facility in Colorado Springs.

⁷Contracted programs include privately operated community programs in which DYC contracts for a specified number of slots.

Per Diem programs include individualized community placements contracted for as needed.

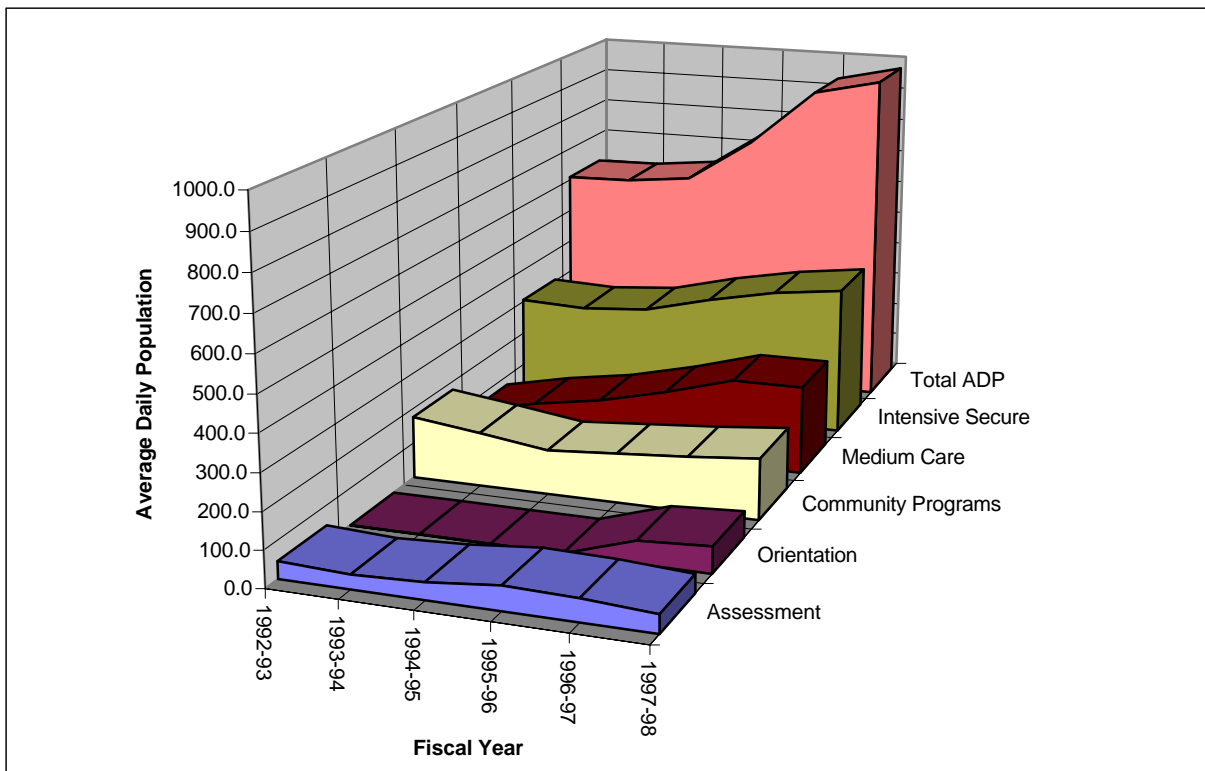
**DIVISION OF YOUTH CORRECTIONS
ADP TRENDS IN
RESIDENTIAL PROGRAMS**

Fiscal Years:

| | 1992-93 | 1993-94 | 1994-95 | 1995-96 | 1996-97 | 1997-98 |
|--------------------------|----------------|----------------|----------------|----------------|----------------|----------------|
| Assessment | 46.6 | 38.4 | 46.5 | 65.6 | 62.0 | 50.0 |
| Orientation ¹ | N/A | N/A | N/A | N/A | 61.7 | 72.8 |
| Intensive Secure | 305.6 | 298.1 | 314.4 | 363.1 | 401.7 | 426.9 |
| Medium Care | 75.0 | 115.7 | 147.8 | 194.4 | 249.5 | 250.6 |
| Community Programs | 175.6 | 152.1 | 125.2 | 139.8 | 154.4 | 173.2 |
| Other ADP ² | 6.5 | 9.4 | 0.0 | 0.0 | 0.0 | 0.0 |
| Total ADP | 609.3 | 613.7 | 633.9 | 762.9 | 929.3 | 973.5 |

¹The Orientation program at LMYSC did not become operational until July 1, 1996.

²Classification instruments had not been administered to these youth.



TRENDS IN COMMITMENT LENGTH OF STAY BY PROGRAM TYPE¹
FY 1995-96 through FY 1997-98

| <u>LOS (mos.)</u> | <u>FY 1995-96</u> | <u>FY 1996-97</u> | <u>FY 1997-98</u> |
|--------------------------|--------------------------|--------------------------|--------------------------|
| Assessment | 1.0 | 1.0 | 1.0 months |
| Orientation ² | NA | 1.8 | 1.9 months |
| Intensive Secure | 11.9 | 11.2 | 11.4 months |
| Medium Care | 5.2 | 5.7 | 6.3 months |
| Community Programs | 5.0 | 5.3 | 5.2 months |
| Total Residential | 13.7 | 14.5 | 15.1 months |
| Total Commitment | 22.9 | 22.5 | 22.1 months |

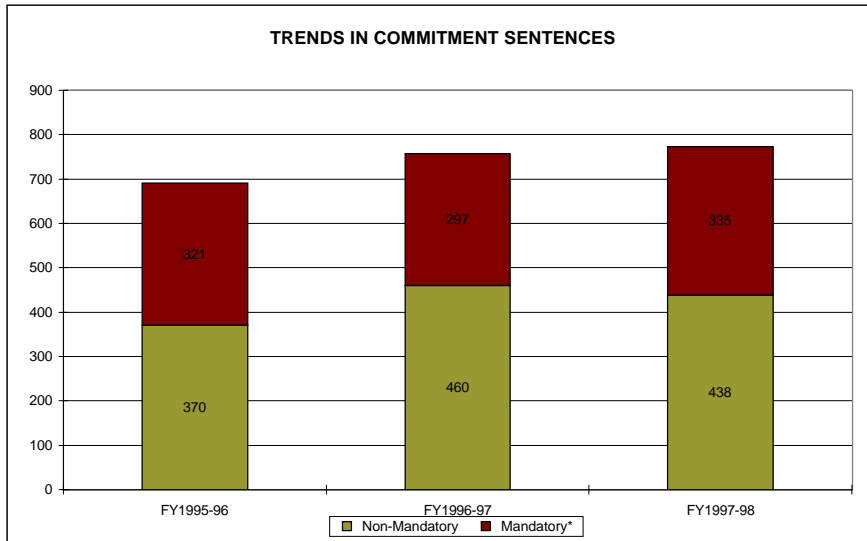
¹Length of stay is defined on page iv.

²The Orientation program at LMYSC did not become operational until July 1, 1996.

DIVISION OF YOUTH CORRECTIONS

**POPULATION TRENDS
BY SENTENCE AND COMMITMENT TYPE
FY 1995-96 through FY 1997-98**

| NEW COMMITMENT SENTENCE TYPE | FY 1995-96 | | FY 1996-97 | | FY 1997-98 | |
|---------------------------------|------------|---------------|------------|---------------|------------|---------------|
| | N | % | N | % | N | % |
| Non-Mandatory | 370 | 53.4% | 460 | 60.4% | 438 | 56.1% |
| Mandatory | 229 | 33.0% | 235 | 30.8% | 269 | 34.4% |
| Repeat | 79 | 11.4% | 57 | 7.5% | 60 | 7.7% |
| Violent | 13 | 1.9% | 5 | 0.7% | 6 | 0.8% |
| Aggravated Juvenile | 2 | 0.3% | 5 | 0.7% | 8 | 1.0% |
| Adult | 0 | 0.0% | 0 | 0.0% | 0 | 0.0% |
| TOTAL | 693 | 100.0% | 762 | 100.0% | 781 | 100.0% |



*Mandatory refers to *mandatory, repeat, and violent* commitment types. *Aggravated Juvenile* offenders are excluded from this graph.

| COMMITMENT TYPE | FY 1995-96 | | FY 1996-97 | | FY 1997-98 | |
|-----------------|------------|---------------|------------|---------------|------------|---------------|
| | N | % | N | % | N | % |
| New Commitment | 693 | 79.3% | 762 | 81.6% | 781 | 81.4% |
| Concurrent | 170 | 19.5% | 156 | 16.7% | 160 | 16.7% |
| Consecutive | 11 | 1.3% | 16 | 1.7% | 18 | 1.9% |
| TOTAL | 874 | 100.0% | 934 | 100.0% | 959 | 100.0% |

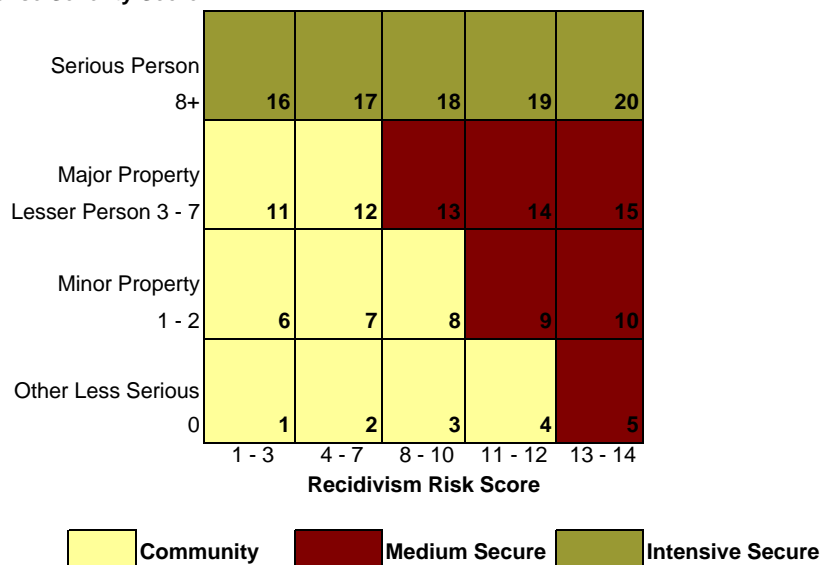
DIVISION OF YOUTH CORRECTIONS

POPULATION TRENDS BY COMMITMENT CLASSIFICATION SCORES
FY 1995-96 through FY 1997-98

| NEW COMMITMENT CLASSIFICATION | FY 1995-96 | | FY 1996-97 | | FY 1997-98 | |
|-------------------------------|------------|---------------|------------|---------------|------------|---------------|
| | N | % | N | % | N | % |
| Cell 1 | 2 | 0.3% | 2 | 0.3% | 1 | 0.1% |
| Cell 2 | 24 | 3.5% | 19 | 2.5% | 15 | 1.9% |
| Cell 3 | 33 | 4.8% | 33 | 4.3% | 19 | 2.4% |
| Cell 4 | 16 | 2.3% | 30 | 3.9% | 25 | 3.2% |
| Cell 5 | 14 | 2.0% | 11 | 1.4% | 8 | 1.0% |
| Cell 6 | 0 | 0.0% | 0 | 0.0% | 0 | 0.0% |
| Cell 7 | 21 | 3.0% | 13 | 1.7% | 17 | 2.2% |
| Cell 8 | 40 | 5.8% | 44 | 5.8% | 51 | 6.5% |
| Cell 9 | 38 | 5.5% | 51 | 6.7% | 60 | 7.7% |
| Cell 10 | 46 | 6.6% | 47 | 6.2% | 50 | 6.4% |
| Cell 11 | 2 | 0.3% | 9 | 1.2% | 7 | 0.9% |
| Cell 12 | 57 | 8.2% | 80 | 10.5% | 86 | 11.0% |
| Cell 13 | 144 | 20.8% | 162 | 21.3% | 149 | 19.1% |
| Cell 14 | 77 | 11.1% | 98 | 12.9% | 98 | 12.5% |
| Cell 15 | 0 | 0.0% | 0 | 0.0% | 0 | 0.0% |
| Cell 16 | 30 | 4.3% | 15 | 2.0% | 31 | 4.0% |
| Cell 17 | 82 | 11.8% | 80 | 10.5% | 95 | 12.2% |
| Cell 18 | 62 | 8.9% | 67 | 8.8% | 62 | 7.9% |
| Cell 19 ¹ | --- | --- | --- | --- | --- | --- |
| Cell 20 ¹ | --- | --- | --- | --- | --- | --- |
| Cell Not Available | 5 | 0.7% | 1 | 0.1% | 7 | 0.9% |
| TOTAL | 693 | 100.0% | 762 | 100.0% | 781 | 100.0% |

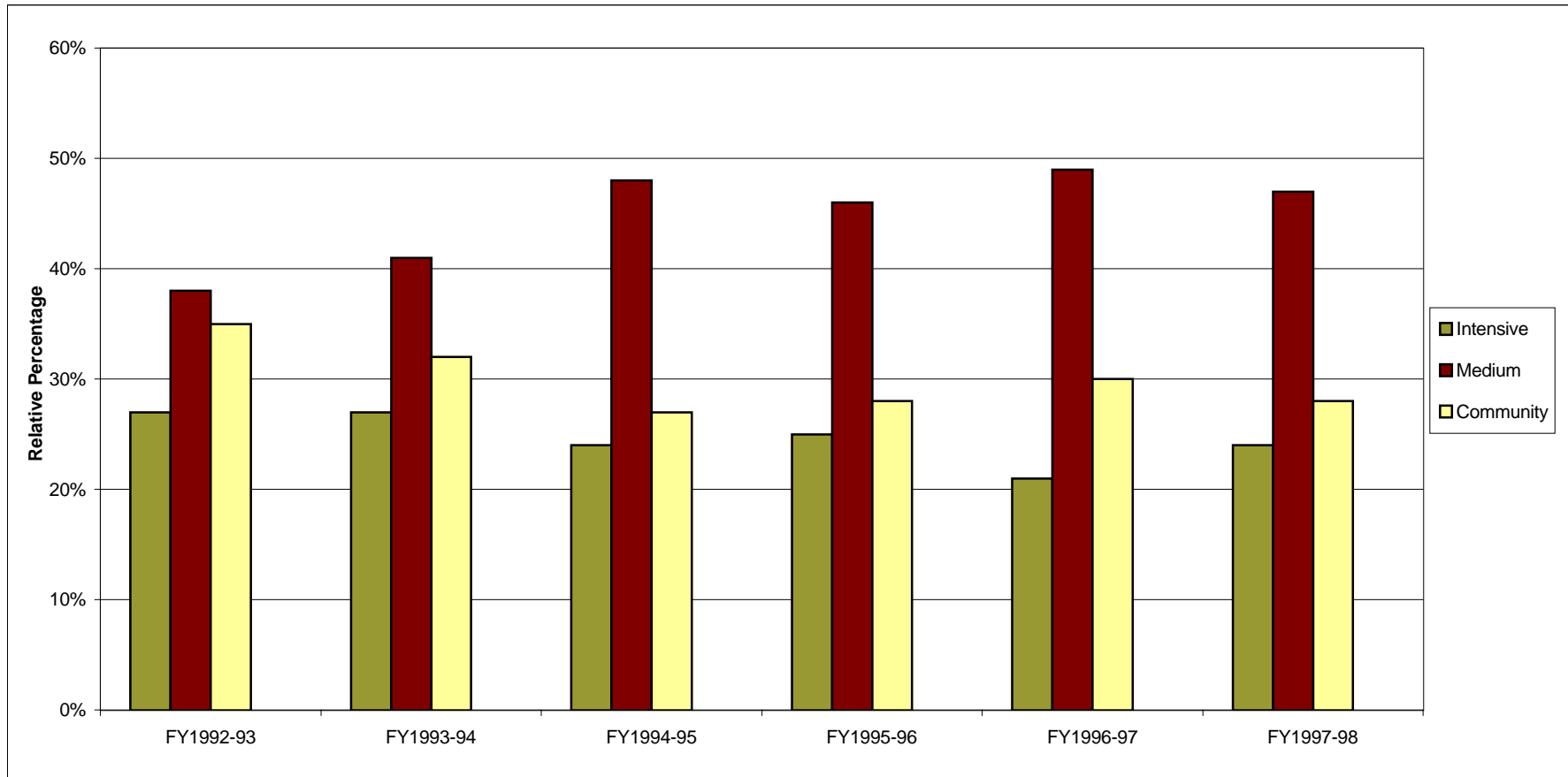
¹Scoring of the classification grid does not allow youth to fall into this cell.

Offense Severity Score



**DIVISION OF YOUTH CORRECTIONS
CLASSIFICATION TRENDS OF NEW COMMITMENTS
FY1992-93 thru 1997-98**

16



| | Intensive | | Medium | | Community | |
|------------------|-----------|-----|----------|-----|-----------|-----|
| | <i>n</i> | % | <i>n</i> | % | <i>n</i> | % |
| FY1992-93 | 145 | 27% | 205 | 38% | 186 | 35% |
| FY1993-94 | 149 | 27% | 226 | 41% | 177 | 32% |
| FY1994-95 | 144 | 24% | 287 | 48% | 163 | 27% |
| FY1995-96 | 174 | 25% | 319 | 46% | 195 | 28% |
| FY1996-97 | 162 | 21% | 369 | 49% | 230 | 30% |
| FY1997-98 | 188 | 24% | 365 | 47% | 221 | 28% |

NOTE: Fiscal year totals might not match what is reported elsewhere in this manual since classification data was not yet available on all new commitments at the time these data were prepared.

DIVISION OF YOUTH CORRECTIONS

**PAROLE
POPULATION TRENDS**

FY 1995-96 through FY 1997-98

| REGION | FY 1995-96 | | | FY 1996-97 | | | FY 1997-98 | | |
|--------------------|------------------------------------|------------------|-------------------------|------------------------------------|------------------|-------------------------|------------------------------------|------------------|-------------------------|
| | No. of Clients Served ¹ | ADC ² | LOS ³ (mos.) | No. of Clients Served ¹ | ADC ² | LOS ³ (mos.) | No. of Clients Served ¹ | ADC ² | LOS ³ (mos.) |
| Southern | 157 | 56.0 | 9.1 | 135 | 50.4 | 8.4 | 152 | 57.8 | 6.7 |
| Western | 145 | 31.6 | 7.8 | 88 | 30.4 | 7.2 | 118 | 37.3 | 6.3 |
| Denver | 140 | 53.6 | 9.7 | 148 | 50.0 | 6.8 | 146 | 50.4 | 6.6 |
| Central | 91 | 60.0 | 9.2 | 150 | 62.6 | 7.3 | 181 | 63.7 | 7.8 |
| Northeast | 84 | 26.5 | 6.4 | 68 | 23.2 | 7.6 | 128 | 45.9 | 6.4 |
| TOTAL ⁴ | 617 | 227.7 | 9.1 | 589 | 216.6 | 7.4 | 725 | 255.0 | 6.8 |

**PAROLE
POPULATION CHARACTERISTICS
FY1997-98**

| SEX: | ADC ² | % | AGE ⁵ : | ADC ² | % |
|-------------------|------------------|--------|--------------------|------------------|-------|
| Male | 224.8 | 88.2% | 13 | 1.2 | 0.5% |
| Female | 30.2 | 11.8% | 14 | 0.7 | 0.3% |
| | | | 15 | 8.8 | 3.4% |
| TOTAL | 255.0 | 100.0% | 16 | 20.7 | 8.1% |
| | | | 17 | 57.5 | 22.6% |
| | | | 18 | 81.4 | 31.9% |
| ETHNICITY: | | | 19 | 63.1 | 24.7% |
| Anglo-American | 125.0 | 49.0% | 20 | 18.0 | 7.0% |
| African-American | 32.4 | 12.7% | 21 | 3.6 | 1.4% |
| Hispanic/Latino | 93.5 | 36.7% | | | |
| Native-American | 0.3 | 0.1% | | | |
| Asian-American | 1.5 | 0.6% | | | |
| Other | 2.4 | 0.9% | | | |

Average Age of Youth on Parole⁵: 17.9 years

| JOB/SCHOOL STATUS AT TIME OF DISCHARGE ⁶ : | N | % | TYPE OF COMMITMENT: | ADC ² | % |
|---|-----|--------|---------------------|------------------|-------|
| | | | | | |
| | | | Non-Mandatory | 157.0 | 61.6% |
| | | | Mandatory | 67.4 | 26.4% |
| Working or in School | 243 | 80.7% | Repeat | 26.8 | 10.5% |
| Unemployed and not in School | 58 | 19.3% | Violent | 2.0 | 0.8% |
| TOTAL DISCHARGED | 301 | 100.0% | Aggravated Juvenile | 1.9 | 0.7% |
| | | | Adult | 0.0 | 0.0% |

¹Clients served counts are unduplicated.

²Average Daily Caseload (ADC) is the average number of active youth on parole during the time period. Youth on parole who were on escape status during the time period are not included.

³Parole length of stay is defined on page iv.

⁴Interstate Compact is included in total clients served. Total clients served may not equal the sum of the five regions since youth may be served in more than one region.

⁵Calculated based on age of youth on the last day of fiscal year.

⁶Includes only youth who were on parole at time of discharge. Captures job/School status on day of discharge.

DIVISION OF YOUTH CORRECTIONS
COLORADO JUVENILE COMMITMENT RATE
BY COUNTY¹
FY1995-96 thru FY1997-98

| County of Commitment | Juvenile Population Age 10-17 yrs.² | Number of New Commitments FY 1997-98³ | Number Juvenile Commitments Per 100,000 Juvenile Population | | |
|---------------------------------|---|---|--|--------------------------|--------------------------|
| | | | <u>FY1995-96</u> | <u>FY 1996-97</u> | <u>FY 1997-98</u> |
| Adams | 40,290 | 46 | 119 | 132 | 114 |
| Arapahoe | 55,277 | 61 | 102 | 88 | 110 |
| Boulder | 28,842 | 28 | 79 | 61 | 97 |
| Denver | 51,256 | 144 | 326 | 285 | 281 |
| Douglas | 17,003 | 13 | 34 | 32 | 76 |
| El Paso | 56,115 | 101 | 103 | 159 | 180 |
| Jefferson | 58,718 | 93 | 149 | 163 | 158 |
| Larimer | 26,507 | 37 | 132 | 170 | 140 |
| Mesa | 13,641 | 55 | 259 | 384 | 403 |
| Pueblo | 15,731 | 26 | 186 | 209 | 165 |
| Weld | 19,552 | 33 | 165 | 181 | 169 |
| TOTAL | 463,654 | 781 | 161 | 174 | 168 |

¹Only counties with juvenile populations over 9,000 are included.

²Population figures for ages 10 through 17 are estimates derived from 1990 intercensus population estimates, Colorado Division of Local Government. Estimates are for calendar year 1998.

³Number represents the number of NEW commitments from that county.

DIVISION OF YOUTH CORRECTIONS

**COMMITTED YOUTH
DEMOGRAPHIC TRENDS
FY 1995-96 through FY 1997-98**

| | FY 1995-96 | | | | FY 1996-97 | | | | FY 1997-98 | | | |
|---|-----------------------------------|--------|---------------------------|------|-----------------------------------|--------|---------------------------|------|-----------------------------------|--------|---------------------------|------|
| | No. of New Commit- ments | | Res. LOS (ADP Mos.) | | No. of New Commit- ments | | Res. LOS (ADP Mos.) | | No. of New Commit- ments | | Res. LOS (ADP Mos.) | |
| SEX | | | | | | | | | | | | |
| Male | 643 | 92.8% | 727.8 | 14.0 | 693 | 90.9% | 871.2 | 14.9 | 678 | 86.8% | 891.0 | 15.3 |
| Female | 50 | 7.2% | 35.3 | 9.3 | 69 | 9.1% | 57.3 | 10.5 | 103 | 13.2% | 82.1 | 12.9 |
| TOTAL | 693 | 100.0% | 763.1 | 13.7 | 762 | 100.0% | 928.4 | 14.5 | 781 | 100.0% | 973.1 | 15.1 |
| ETHNICITY | | | | | | | | | | | | |
| Anglo-American | 345 | 49.8% | 339.3 | 13.6 | 358 | 47.0% | 435.2 | 13.9 | 396 | 50.7% | 478.4 | 14.8 |
| African-American | 82 | 11.8% | 118.4 | 15.0 | 105 | 13.8% | 134.1 | 15.8 | 122 | 15.6% | 148.1 | 16.8 |
| Hispanic/Latino | 250 | 36.1% | 268.3 | 13.1 | 279 | 36.6% | 329.9 | 14.7 | 238 | 30.5% | 318.5 | 14.9 |
| Native American | 6 | 0.9% | 8.2 | 16.8 | 6 | 0.8% | 5.3 | 12.2 | 9 | 1.2% | 10.8 | 12.8 |
| Asian-American | 5 | 0.7% | 7.2 | 15.9 | 3 | 0.4% | 5.3 | 14.3 | 8 | 1.0% | 6.2 | 12.1 |
| Other | 5 | 0.7% | 21.7 | 13.0 | 11 | 1.4% | 18.7 | 17.5 | 8 | 1.0% | 11.1 | 14.9 |
| AGE¹ | | | | | | | | | | | | |
| 12 Years | 8 | 1.2% | 0.4 | 18.5 | 6 | 0.8% | 0.9 | 15.0 | 6 | 0.8% | 0.3 | 23.7 |
| 13 Years | 36 | 5.2% | 5.5 | 19.3 | 31 | 4.1% | 6.4 | 17.0 | 28 | 3.6% | 4.6 | 18.1 |
| 14 Years | 70 | 10.1% | 27.2 | 16.4 | 81 | 10.6% | 32.1 | 19.5 | 80 | 10.2% | 28.2 | 16.8 |
| 15 Years | 171 | 24.7% | 72.6 | 13.9 | 156 | 20.5% | 85.9 | 15.6 | 171 | 21.9% | 93.5 | 16.4 |
| 16 Years | 176 | 25.4% | 146.7 | 14.1 | 224 | 29.4% | 189.1 | 13.9 | 224 | 28.7% | 175.9 | 14.7 |
| 17 Years | 213 | 30.7% | 215.6 | 11.2 | 239 | 31.4% | 261.6 | 12.4 | 242 | 31.0% | 267.4 | 13.4 |
| 18 Years | 17 | 2.5% | 194.4 | 11.4 | 22 | 2.9% | 241.8 | 13.0 | 27 | 3.5% | 273.5 | 12.7 |
| 19 Years | 2 | 0.3% | 82.6 | 11.4 | 2 | 0.3% | 86.9 | 0.0 | 3 | 0.4% | 115.1 | 6.7 |
| 20 Years | 0 | 0.0% | 15.1 | 0.0 | 1 | 0.1% | 23.0 | 0.0 | 0 | 0.0% | 12.5 | 9.4 |
| 21 Years | 0 | 0.0% | 2.9 | 0.0 | 0 | 0.0% | 0.8 | 0.0 | 0 | 0.0% | 2.1 | 0.0 |
| Average Age at Commitment:² | 16.2 Years | | | | 16.3 Years | | | | 16.4 Years | | | |

¹Actual counts and LOS for each age category correspond to age at commitment. ADP figures for each age category, however, are based on the youth's age on the last day of the fiscal year. **Note:** House Bill 96-1005 passed during FY1996-97 allows for commitment of ten year olds. There were no 10 or 11 year olds committed during FY1996-97 thru FY1997-98.

²Average age at commitment for the three years shown above have been recalculated and are slightly higher than previously reported. In prior years these calculations were based on discrete (e.g., 16 years) values for age and are now based on continuous (e.g., 16.487 years) values.

DIVISION OF YOUTH CORRECTIONS

**COMMITTED YOUTH
DEMOGRAPHIC TRENDS
FY 1995-96 through FY 1997-98**

| | FY 1995-96 | | | | FY 1996-97 | | | | FY 1997-98 | | | |
|---|-----------------------------------|--------|---------------------------|------|-----------------------------------|--------|---------------------------|------|-----------------------------------|--------|---------------------------|------|
| | No. of New Commit- ments | | Res. LOS (ADP Mos.) | | No. of New Commit- ments | | Res. LOS (ADP Mos.) | | No. of New Commit- ments | | Res. LOS (ADP Mos.) | |
| SEX | | | | | | | | | | | | |
| Male | 643 | 92.8% | 727.8 | 14.0 | 693 | 90.9% | 871.2 | 14.9 | 678 | 86.8% | 891.0 | 15.3 |
| Female | 50 | 7.2% | 35.3 | 9.3 | 69 | 9.1% | 57.3 | 10.5 | 103 | 13.2% | 82.1 | 12.9 |
| TOTAL | 693 | 100.0% | 763.1 | 13.7 | 762 | 100.0% | 928.4 | 14.5 | 781 | 100.0% | 973.1 | 15.1 |
| ETHNICITY | | | | | | | | | | | | |
| Anglo-American | 345 | 49.8% | 339.3 | 13.6 | 358 | 47.0% | 435.2 | 13.9 | 396 | 50.7% | 478.4 | 14.8 |
| African-American | 82 | 11.8% | 118.4 | 15.0 | 105 | 13.8% | 134.1 | 15.8 | 122 | 15.6% | 148.1 | 16.8 |
| Hispanic/Latino | 250 | 36.1% | 268.3 | 13.1 | 279 | 36.6% | 329.9 | 14.7 | 238 | 30.5% | 318.5 | 14.9 |
| Native American | 6 | 0.9% | 8.2 | 16.8 | 6 | 0.8% | 5.3 | 12.2 | 9 | 1.2% | 10.8 | 12.8 |
| Asian-American | 5 | 0.7% | 7.2 | 15.9 | 3 | 0.4% | 5.3 | 14.3 | 8 | 1.0% | 6.2 | 12.1 |
| Other | 5 | 0.7% | 21.7 | 13.0 | 11 | 1.4% | 18.7 | 17.5 | 8 | 1.0% | 11.1 | 14.9 |
| AGE¹ | | | | | | | | | | | | |
| 12 Years | 8 | 1.2% | 0.4 | 18.5 | 6 | 0.8% | 0.9 | 15.0 | 6 | 0.8% | 0.3 | 23.7 |
| 13 Years | 36 | 5.2% | 5.5 | 19.3 | 31 | 4.1% | 6.4 | 17.0 | 28 | 3.6% | 4.6 | 18.1 |
| 14 Years | 70 | 10.1% | 27.2 | 16.4 | 81 | 10.6% | 32.1 | 19.5 | 80 | 10.2% | 28.2 | 16.8 |
| 15 Years | 171 | 24.7% | 72.6 | 13.9 | 156 | 20.5% | 85.9 | 15.6 | 171 | 21.9% | 93.5 | 16.4 |
| 16 Years | 176 | 25.4% | 146.7 | 14.1 | 224 | 29.4% | 189.1 | 13.9 | 224 | 28.7% | 175.9 | 14.7 |
| 17 Years | 213 | 30.7% | 215.6 | 11.2 | 239 | 31.4% | 261.6 | 12.4 | 242 | 31.0% | 267.4 | 13.4 |
| 18 Years | 17 | 2.5% | 194.4 | 11.4 | 22 | 2.9% | 241.8 | 13.0 | 27 | 3.5% | 273.5 | 12.7 |
| 19 Years | 2 | 0.3% | 82.6 | 11.4 | 2 | 0.3% | 86.9 | 0.0 | 3 | 0.4% | 115.1 | 6.7 |
| 20 Years | 0 | 0.0% | 15.1 | 0.0 | 1 | 0.1% | 23.0 | 0.0 | 0 | 0.0% | 12.5 | 9.4 |
| 21 Years | 0 | 0.0% | 2.9 | 0.0 | 0 | 0.0% | 0.8 | 0.0 | 0 | 0.0% | 2.1 | 0.0 |
| Average Age at Commitment:² | 16.2 Years | | | | 16.3 Years | | | | 16.4 Years | | | |

¹Actual counts and LOS for each age category correspond to age at commitment. ADP figures for each age category, however, are based on the youth's age on the last day of the fiscal year. **Note:** House Bill 96-1005 passed during FY1996-97 allows for commitment of ten year olds. There were no 10 or 11 year olds committed during FY1996-97 thru FY1997-98.

²Average age at commitment for the three years shown above have been recalculated and are slightly higher than previously reported. In prior years these calculations were based on discrete (e.g., 16 years) values for age and are now based on continuous (e.g., 16.487 years) values.

**DIVISION OF YOUTH CORRECTIONS
COMMITMENT POPULATION CHARACTERISTICS BY GENDER
FY1996-97 AND FY1997-98**

| | MALES | | | | FEMALES | | | |
|--|-----------|--------|-----------|--------|-----------|--------|-----------|--------|
| | FY1996-97 | | FY1997-98 | | FY1996-97 | | FY1997-98 | |
| | n | % | n | % | n | % | n | % |
| DEMOGRAPHIC DATA¹ | | | | | | | | |
| Ethnicity | | | | | | | | |
| Anglo-American: | 317 | 45.7% | 339 | 50.0% | 41 | 59.4% | 57 | 55.3% |
| African-American: | 94 | 13.6% | 110 | 16.2% | 11 | 15.9% | 12 | 11.7% |
| Hispanic/Latino: | 264 | 38.1% | 207 | 30.5% | 15 | 21.7% | 31 | 30.1% |
| Native American: | 6 | 0.9% | 8 | 1.2% | 0 | 0.0% | 1 | 1.0% |
| Asian-American: | 3 | 0.4% | 7 | 1.0% | 0 | 0.0% | 1 | 1.0% |
| Other: | 9 | 1.3% | 7 | 1.0% | 2 | 2.9% | 1 | 1.0% |
| TOTAL NEW COMMITMENTS | 693 | 100.0% | 678 | 100.0% | 69 | 100.0% | 103 | 100.0% |
| Age ² | | | | | | | | |
| 12 Years | 6 | 0.9% | 6 | 0.9% | 0 | 0.0% | 0 | 0.0% |
| 13 Years | 25 | 3.6% | 21 | 3.1% | 6 | 8.7% | 7 | 6.8% |
| 14 Years | 71 | 10.2% | 67 | 9.9% | 10 | 14.5% | 13 | 12.6% |
| 15 Years | 139 | 20.1% | 148 | 21.8% | 17 | 24.6% | 23 | 22.3% |
| 16 Years | 210 | 30.3% | 190 | 28.0% | 14 | 20.3% | 34 | 33.0% |
| 17 Years | 218 | 31.5% | 220 | 32.4% | 21 | 30.4% | 22 | 21.4% |
| 18 Years | 21 | 3.0% | 23 | 3.4% | 1 | 1.4% | 4 | 3.9% |
| 19 Years | 2 | 0.3% | 3 | 0.4% | 0 | 0.0% | 0 | 0.0% |
| 20 Years | 1 | 0.1% | 0 | 0.0% | 0 | 0.0% | 0 | 0.0% |
| 21 Years | 0 | 0.0% | 0 | 0.0% | 0 | 0.0% | 0 | 0.0% |
| Average Age at Commitment ³ : | 16.4 Yrs. | | 16.4 Yrs. | | 16.4 Yrs. | | 16.2 Yrs. | |
| NEW COMMITMENT PROFILE | | | | | | | | |
| Prior Adjudications | | | | | | | | |
| None: | 134 | 19.3% | 136 | 20.1% | 27 | 39.1% | 41 | 39.8% |
| One: | 224 | 32.3% | 207 | 30.5% | 25 | 36.2% | 37 | 35.9% |
| Two or more: | 335 | 48.3% | 335 | 49.4% | 17 | 24.6% | 25 | 24.3% |
| Prior Out-of-Home Placements | | | | | | | | |
| None: | 165 | 23.8% | 163 | 24.0% | 10 | 14.5% | 16 | 15.5% |
| One: | 156 | 22.5% | 133 | 19.6% | 20 | 29.0% | 18 | 17.5% |
| Two or more: | 372 | 53.7% | 382 | 56.3% | 39 | 56.5% | 69 | 67.0% |
| Runaway History ⁴ | | | | | | | | |
| No runaway history: | 239 | 34.5% | 267 | 39.4% | 11 | 15.9% | 19 | 18.4% |
| Runaway history: | 453 | 65.4% | 409 | 60.3% | 58 | 84.1% | 83 | 80.6% |
| Missing Data: | 1 | 0.1% | 2 | 0.3% | 0 | 0.0% | 1 | 1.0% |
| Assessed Substance Abuse Counseling Needs ⁵ | | | | | | | | |
| Prevention: | 49 | 7.1% | 101 | 14.9% | 6 | 8.7% | 11 | 10.7% |
| Intervention: | 211 | 30.4% | 180 | 26.5% | 22 | 31.9% | 26 | 25.2% |
| Treatment: | 431 | 62.2% | 390 | 57.5% | 41 | 59.4% | 65 | 63.1% |
| Missing Data: | 2 | 0.3% | 7 | 1.0% | 0 | 0.0% | 1 | 1.0% |
| Average Age at First Adjudication: | 14.2 Yrs. | | 14.2 Yrs. | | 14.2 Yrs. | | 14.3 Yrs. | |
| POPULATION DATA | | | | | | | | |
| Average Daily Population | | | | | | | | |
| Assessment: | 57.9 | | 43.6 | | 3.55 | | 6.35 | |
| Orientation ⁶ : | N/A | | 72.7 | | N/A | | N/A | |
| Intensive Secure: | 397.1 | | 415.4 | | 4.1 | | 11.3 | |
| Medium Care: | 275.7 | | 200.3 | | 35.7 | | 50.6 | |
| Community Residential: | 139.3 | | 159.0 | | 13.9 | | 14.0 | |
| Residential: | 870.0 | | 891.0 | | 57.3 | | 82.1 | |
| Parole ⁷ : | 194.1 | | 224.8 | | 22.5 | | 30.2 | |

¹Data are based on NEW commitments.

²House Bill 96-1005 passed during FY1996-97 allows for commitment of ten year olds. There were no 10 or 11 year olds committed during FY1996-97 thru FY1997-98.

³Average age at commitment for the three years shown above have been recalculated and are slightly higher than previously reported. In prior years these calculations were based on discrete (e.g., 16 years) values for age and are now based on continuous (e.g., 16.487 years) values.

⁴Refers to running away from a secure or nonsecure placement as well as from home during the 12 months prior to commitment.

⁵Substance abuse history and treatment needs are assessed within one month of commitment. Youth with minimal substance abuse history and/or treatment needs are identified for *prevention* services whereas those reporting the greatest history of abuse and treatment needs are targeted for substance abuse *treatment* services.

⁶The Orientation program at LMYSC was opened on July 1, 1996.

⁷Only youth actively on parole are included in ADP calculations; youth who were on escape status during the time period are excluded.

**DIVISION OF YOUTH CORRECTIONS
COMMITMENT POPULATION CHARACTERISTICS BY GENDER
FY1996-97 AND FY1997-98**

| | MALES | | | | FEMALES | | | |
|------------------------------------|-----------|-------------|-----------|-------------|-----------|-------------|-----------|-------------|
| | FY1996-97 | | FY1997-98 | | FY1996-97 | | FY1997-98 | |
| | n | % | n | % | n | % | n | % |
| COMMITMENT DATA¹ | | | | | | | | |
| Offense Type | | | | | | | | |
| Person Felony: | 151 | 21.8% | 155 | 22.9% | 7 | 10.1% | 22 | 21.4% |
| Person Misdemeanor: | 94 | 13.6% | 94 | 13.9% | 8 | 11.6% | 17 | 16.5% |
| Property Felony: | 293 | 42.3% | 285 | 42.0% | 34 | 49.3% | 32 | 31.1% |
| Property Misdemeanor: | 70 | 10.1% | 50 | 7.4% | 10 | 14.5% | 15 | 14.6% |
| Drug Felony: | 33 | 4.8% | 41 | 6.0% | 2 | 2.9% | 3 | 2.9% |
| Drug Misdemeanor: | 1 | 0.1% | 1 | 0.1% | 0 | 0.0% | 0 | 0.0% |
| Weapons Felony: | 5 | 0.7% | 8 | 1.2% | 0 | 0.0% | 0 | 0.0% |
| Weapons Misdemeanor: | 18 | 2.6% | 15 | 2.2% | 0 | 0.0% | 3 | 2.9% |
| Other: | 27 | 3.9% | 25 | 3.7% | 7 | 10.1% | 10 | 9.7% |
| Missing Data: | <u>1</u> | <u>0.1%</u> | <u>4</u> | <u>0.6%</u> | 1 | 1.4% | 1 | 1.0% |
| TOTAL NEW COMMITMENTS | 693 | 100.0% | 678 | 100.0% | 69 | 100.0% | 103 | 100.0% |
| Commitment Sentence Type | | | | | | | | |
| Non-Mandatory: | 406 | 58.6% | 368 | 54.3% | 54 | 78.3% | 70 | 68.0% |
| Mandatory: | 222 | 32.0% | 243 | 35.8% | 13 | 18.8% | 26 | 25.2% |
| Repeat: | 55 | 7.9% | 54 | 8.0% | 2 | 2.9% | 6 | 5.8% |
| Violent: | 0 | 0.0% | 6 | 0.9% | 0 | 0.0% | 0 | 0.0% |
| Aggravated Juvenile: | 5 | 0.7% | 7 | 1.0% | 0 | 0.0% | 1 | 1.0% |
| Adult: | 0 | 0.0% | 0 | 0.0% | 0 | 0.0% | 0 | 0.0% |
| Missing Data: | 5 | 0.7% | 0 | 0.0% | | | | |
| New Commitment Classification | | | | | | | | |
| Intensive: | 153 | 22.1% | 167 | 24.6% | 9 | 13.0% | 21 | 20.4% |
| Medium: | 333 | 48.1% | 318 | 46.9% | 36 | 52.2% | 49 | 47.6% |
| Community: | 206 | 29.7% | 189 | 27.9% | 24 | 34.8% | 32 | 31.1% |
| Missing Data: | 1 | 0.1% | 4 | 0.6% | 0 | 0.0% | 1 | 1.0% |
| Commitment Type | | | | | | | | |
| New Commitment: | 693 | 81.5% | 678 | 80.8% | 69 | 82.1% | 103 | 85.8% |
| Concurrent: | 142 | 16.7% | 145 | 17.3% | 14 | 16.7% | 15 | 12.5% |
| Consecutive: | <u>15</u> | <u>1.8%</u> | <u>16</u> | <u>1.9%</u> | <u>1</u> | <u>1.2%</u> | <u>2</u> | <u>1.7%</u> |
| TOTAL COMMITMENTS | 850 | 100.0% | 839 | 100.0% | 84 | 100.0% | 120 | 100.0% |
| DISCHARGE DATA | | | | | | | | |
| No. Youth Discharged: | | 572 | 626 | | 50 | | 57 | |
| No. Youth Discharged from Parole: | | 269 | 284 | | 27 | | 42 | |
| Average Age at Discharge | | 18.2 Yrs. | 18.2 Yrs. | | 18.3 Yrs. | | 17.8 Yrs. | |
| Average LOS (months) | | | | | | | | |
| Intensive Secure: | | 11.5 | 11.8 | | 5.0 | | 2.4 | |
| Medium Secure: | | 5.1 | 5.9 | | 7.8 | | 10.0 | |
| Community Residential: | | 5.4 | 5.2 | | 4.8 | | 5.4 | |
| Total Residential: | | 14.9 | 15.3 | | 10.5 | | 12.9 | |
| Parole: | | 7.3 | 6.8 | | 9.0 | | 6.8 | |
| Total Commitment: | | 22.5 | 22.1 | | 21.6 | | 21.3 | |
| | | n | % | | n | % | n | % |
| Job/School Status at Discharge | | | | | | | | |
| Unemployed and not in school: | 247 | 43.2% | 256 | 40.9% | 15 | 30.0% | 12 | 21.1% |
| Working or in school: | 324 | 56.6% | 366 | 58.5% | 34 | 68.0% | 45 | 78.9% |
| Missing Data: | 1 | 0.2% | 4 | 0.6% | 1 | 2.0% | 0 | 0.0% |



SECTION III

**DETENTION POPULATION
TRENDS AND CHARACTERISTICS**

DIVISION OF YOUTH CORRECTIONS

**DETAINED YOUTH
POPULATION TRENDS¹**

FY 1987-88 through FY 1997-98

| Fiscal Year | Number of Clients Served² | Percentage Change +/- | No. of New Admissions | Percentage Change +/- | ADP | Percentage Change +/- | LOS | Percentage Change +/- |
|----------------------|---|----------------------------------|----------------------------------|----------------------------------|------------|----------------------------------|------------|----------------------------------|
| 1987-88 | N/A | | 9,001 | | 210.3 | | 7.6 | |
| 1988-89 | N/A | | 8,791 | -2.3% | 257.8 | 22.6% | 9.7 | 27.6% |
| 1989-90 | 5,394 | | 10,669 | 21.4% | 344.5 | 33.6% | 10.0 | 3.1% |
| 1990-91 | 5,920 | 9.8% | 11,402 | 6.9% | 375.0 | 8.9% | 10.8 | 8.0% |
| 1991-92 | 6,548 | 10.6% | 11,988 | 5.1% | 380.6 | 1.5% | 11.6 | 7.4% |
| 1992-93 | 6,820 | 4.2% | 12,388 | 3.3% | 403.2 | 5.9% | 12.0 | 3.4% |
| 1993-94 | 7,800 | 14.4% | 16,197 | 30.7% | 467.8 | 16.0% | 10.4 | -13.3% |
| 1994-95 | 8,807 | 12.9% | 16,638 | 2.7% | 589.0 | 25.9% | 13.2 | 26.9% |
| 1995-96 ³ | 7,870 | -10.6% | 13,852 | -16.7% | 541.5 | -8.1% | 13.7 | 3.8% |
| 1996-97 | 8,303 | 5.5% | 14,652 | 5.8% | 522.5 | -3.5% | 13.0 | -5.1% |
| 1997-98 | 8,785 | 5.8% | 15,428 | 5.3% | 591.8 | 13.3% | 13.9 | 7.2% |

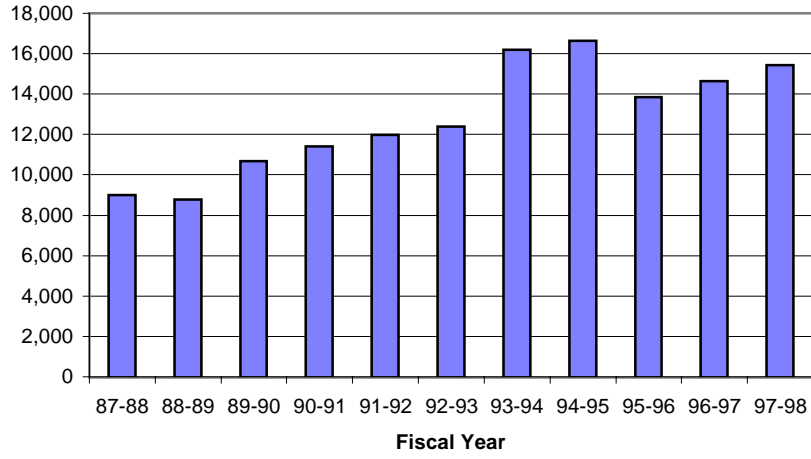
¹Contracted holding facilities are used in detention totals.

²Clients served counts are unduplicated. Figures not available prior to FY1989-90.

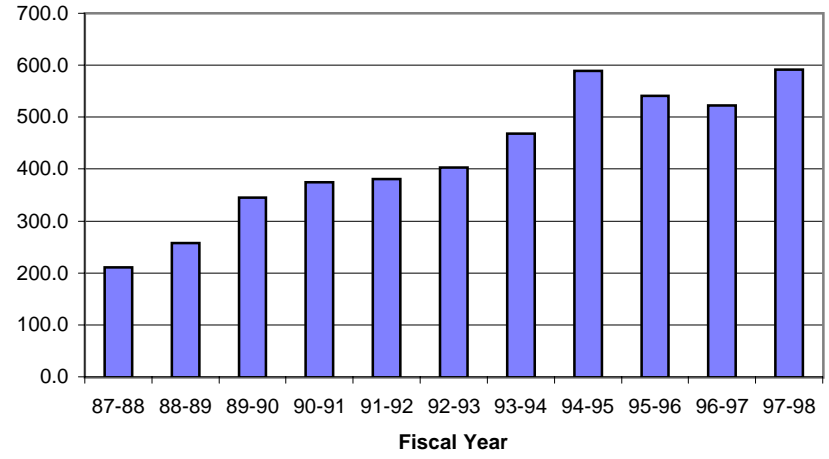
³A cap imposed on Gilliam YSC by the Federal Court in FY1995-96 resulted in decreased detention admissions and ADP.

DIVISION OF YOUTH CORRECTIONS
Trends in Detention Populations
FY1987-88 thru FY1997-98

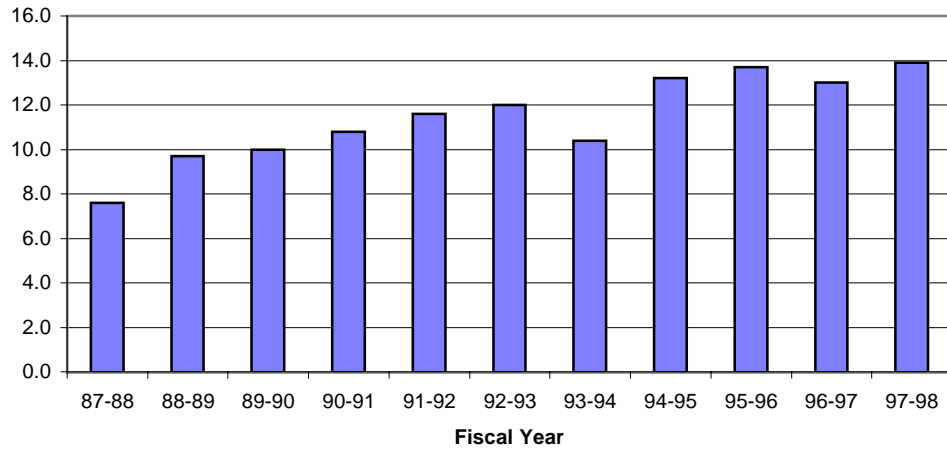
TRENDS IN DETENTION ADMISSIONS



TRENDS IN DETENTION ADP



TRENDS IN DETENTION LOS



DIVISION OF YOUTH CORRECTIONS

DETENTION POPULATION TRENDS BY PROGRAM TYPE

FY 1995-96 through FY 1997-98

| | FY 1995-96 | | | | FY 1996-97 | | | | FY 1997-98 | | | |
|--------------------------------|-----------------------------|---------------|--------------|-------------|-----------------------------|---------------|--------------|-------------|-----------------------------|---------------|--------------|-------------|
| | Clients Served ¹ | | LOS (days) | | Clients Served ¹ | | LOS (days) | | Clients Served ¹ | | LOS (days) | |
| | Adm | ADP | | | Adm | ADP | | | Adm | ADP | | |
| Secure Detention | | | | | | | | | | | | |
| State Operated: | | | | | | | | | | | | |
| Adams YSC | 1,237 | 1,728 | 57.7 | 11.8 | 1,139 | 1,500 | 50.4 | 12.4 | 881 | 1,049 | 37.4 | 13.1 |
| Gilliam YSC ² | 1,813 | 2,459 | 80.3 | 12.1 | 1,305 | 1,723 | 69.0 | 14.8 | 1,448 | 1,904 | 65.7 | 12.6 |
| Grand Mesa YSC | 495 | 670 | 29.0 | 15.6 | 487 | 664 | 32.1 | 17.7 | 518 | 669 | 30.7 | 17.1 |
| Marvin Foote YSC ³ | N/A | N/A | N/A | N/A | 443 | 559 | 20.1 | 9.5 | 1,511 | 1,992 | 97.9 | 17.9 |
| Mount View YSC | 2,616 | 4,009 | 161.5 | 14.4 | 2,807 | 4,213 | 140.1 | 12.7 | 1,717 | 2,316 | 84.3 | 15.4 |
| Platte Valley YSC ⁴ | N/A | N/A | N/A | N/A | N/A | N/A | N/A | N/A | 709 | 1,161 | 30.7 | 8.9 |
| Pueblo YSC | 946 | 1,482 | 49.0 | 12.0 | 915 | 1,371 | 45.5 | 12.0 | 890 | 1,311 | 45.2 | 12.5 |
| Spring Creek YSC ⁵ | N/A | N/A | N/A | N/A | N/A | N/A | N/A | N/A | 647 | 901 | 20.4 | 7.3 |
| Zeb Pike | 1,227 | 2,003 | 58.6 | 10.6 | 1,182 | 1,783 | 39.2 | 8.3 | 970 | 1,447 | 38.4 | 10.0 |
| State Total | 7,334 | 12,351 | 436.1 | 13.1 | 7,104 | 11,813 | 396.4 | 12.4 | 7,642 | 12,750 | 450.7 | 13.3 |
| Contracted | | | | | | | | | | | | |
| Staff Secure | 877 | 1,046 | 30.7 | 6.8 | 1,963 | 2,408 | 59.1 | 8.3 | 1,841 | 2,227 | 63.2 | 9.1 |
| Boot Camp | 503 | 455 | 74.7 | 56.2 | 482 | 431 | 67.0 | 57.9 | 518 | 451 | 77.9 | 58.0 |
| Contracted Total | NA | 1,501 | 105.4 | 6.8 | NA | 2,839 | 126.1 | 15.5 | NA | 2,678 | 141.1 | 17.2 |
| Total Detention | 7,870 | 13,852 | 541.5 | 13.7 | 8,303 | 14,652 | 522.5 | 13.0 | 8,785 | 15,428 | 591.8 | 13.9 |

¹Clients served counts are unduplicated.

²A cap imposed on Gilliam YSC by the Federal Court in FY 1995-96 resulted in decreased detention admissions and ADP.

³Marvin Foote YSC began accepting youth in April 1997.

⁴Platte Valley YSC began accepting youth in November, 1997.

⁵Spring Creek YSC began accepting youth in February, 1998.

DIVISION OF YOUTH CORRECTIONS
COLORADO JUVENILE DETENTION RATES
BY COUNTY¹
FY1995-96 thru FY1997-98

| County of Offense | Juvenile Population Age 10-17 yrs. ² | Number Juvenile Admissions FY 1997-98 | Number Juvenile Admissions Per 100,000 Juvenile Population ³ | | |
|----------------------|---|--|--|-------------------|-------------------|
| | | | <u>FY 1995-96</u> | <u>FY 1996-97</u> | <u>FY 1997-98</u> |
| Adams | 40,290 | 882 | 2,529 | 2,475 | 2,189 |
| Arapahoe | 55,277 | 1,566 | 2,439 | 2,379 | 2,833 |
| Boulder | 28,842 | 873 | 2,494 | 2,408 | 3,027 |
| Denver ⁴ | 51,256 | 3,676 | 6,696 | 6,689 | 7,172 |
| Douglas | 17,003 | 219 | 992 | 1,264 | 1,288 |
| El Paso | 56,115 | 2,116 | 3,573 | 3,505 | 3,771 |
| Jefferson | 58,718 | 1,781 | 3,068 | 3,001 | 3,033 |
| Larimer | 26,507 | 456 | 1,747 | 1,710 | 1,720 |
| Mesa | 13,641 | 477 | 3,106 | 3,072 | 3,497 |
| Pueblo | 15,731 | 1,002 | 5,647 | 5,670 | 6,370 |
| Weld | 19,552 | 531 | 2,754 | 2,718 | 2,716 |
| TOTAL | 463,654 | 15,428 | 3,688 | 3,346 | 3,327 |

¹Only counties with juvenile populations over 9,000 are included.

²Population figures for ages 10 through 17 are derived from the 1990 intercensus estimates, Colorado Division of Local Government. Estimates are for calendar year 1998.

³Counties in which an institution is located will have inflated projected rates since escapes will be counted as an offense in that county.

⁴A cap imposed on Gilliam YSC by the Federal Court in FY 1995-96 resulted in decreased detention admissions and ADP's .

DIVISION OF YOUTH CORRECTIONS

**SECURE DETENTION
DEMOGRAPHIC TRENDS¹**

FY 1995-96 through FY 1997-98

| | FY 1995-96 | | | | FY 1996-97 | | | | FY 1997-98 | | | |
|---------------------------------|-----------------------|--------|-------|------------|-----------------------|--------|-------|------------|-----------------------|--------|-------|------------|
| | No. of New Admissions | % | ADP | LOS (days) | No. of New Admissions | % | ADP | LOS (days) | No. of New Admissions | % | ADP | LOS (days) |
| SEX | | | | | | | | | | | | |
| Male | 11,427 | 82.5% | 472.5 | 14.7 | 11,725 | 80.0% | 447.7 | 13.8 | 12,041 | 78.0% | 496.7 | 15.1 |
| Female | 2,431 | 17.5% | 68.7 | 9.9 | 2,927 | 20.0% | 74.9 | 9.7 | 3,387 | 22.0% | 95.1 | 9.7 |
| TOTAL | 13,858 | 100.0% | 541.2 | 13.7 | 14,652 | 100.0% | 522.6 | 13.0 | 15,428 | 100.0% | 591.8 | 13.9 |
| ETHNICITY | | | | | | | | | | | | |
| Anglo-American | 6,517 | 47.0% | 268.5 | 14.5 | 6,757 | 46.1% | 253.5 | 13.7 | 7,266 | 47.1% | 279.1 | 13.8 |
| African-American | 1,951 | 14.1% | 73.5 | 13.7 | 2,327 | 15.9% | 80.5 | 12.7 | 2,479 | 16.1% | 97.1 | 14.7 |
| Hispanic/Latino | 5,018 | 36.2% | 184.3 | 13.0 | 5,186 | 35.4% | 174.8 | 12.3 | 5,258 | 34.1% | 197.4 | 13.6 |
| Native American | 130 | 0.9% | 4.7 | 13.1 | 115 | 0.8% | 4.8 | 15.4 | 131 | 0.8% | 5.5 | 16.6 |
| Asian-American | 88 | 0.6% | 3.1 | 12.1 | 97 | 0.7% | 2.9 | 10.4 | 126 | 0.8% | 4.7 | 14.9 |
| Other | 154 | 1.1% | 7.1 | 16.3 | 170 | 1.2% | 6.2 | 13.7 | 168 | 1.1% | 8.0 | 16.9 |
| AGE AT ADMISSION | | | | | | | | | | | | |
| 10 Yrs. | 16 | 0.1% | 0.2 | 4.5 | 21 | 0.1% | 0.5 | 9.1 | 37 | 0.2% | 0.9 | 6.6 |
| 11 Yrs. | 79 | 0.6% | 1.6 | 7.2 | 70 | 0.5% | 1.8 | 9.5 | 79 | 0.5% | 1.2 | 5.6 |
| 12 Yrs. | 316 | 2.3% | 9.6 | 11.0 | 271 | 1.8% | 7.2 | 9.9 | 309 | 2.0% | 9.8 | 11.2 |
| 13 Yrs. | 923 | 6.7% | 31.2 | 12.2 | 900 | 6.1% | 28.6 | 11.3 | 967 | 6.3% | 33.3 | 12.2 |
| 14 Yrs. | 1,939 | 14.0% | 72.4 | 13.3 | 1,939 | 13.2% | 66.3 | 12.7 | 2,184 | 14.2% | 74.5 | 12.4 |
| 15 Yrs. | 3,205 | 23.1% | 122.7 | 13.5 | 3,261 | 22.3% | 117.0 | 13.4 | 3,301 | 21.4% | 126.8 | 13.9 |
| 16 Yrs. | 3,470 | 25.0% | 145.7 | 15.2 | 3,866 | 26.4% | 144.2 | 13.5 | 3,970 | 25.7% | 160.8 | 15.1 |
| 17 Yrs. | 3,653 | 26.4% | 138.0 | 13.3 | 4,061 | 27.7% | 141.7 | 12.5 | 4,257 | 27.6% | 165.7 | 13.9 |
| 18 Yrs. | 208 | 1.5% | 15.6 | 22.5 | 215 | 1.5% | 13.3 | 23.1 | 263 | 1.7% | 15.2 | 21.9 |
| 19 Yrs. | 44 | 0.3% | 3.8 | 28.1 | 39 | 0.3% | 1.6 | 18.1 | 56 | 0.4% | 3.1 | 18.0 |
| 20 Yrs. | 5 | 0.0% | 0.4 | 28.4 | 9 | 0.1% | 0.3 | 11.1 | 5 | 0.0% | 0.4 | 29.2 |
| Over 20 Yrs. | 0 | 0.0% | 0.0 | 0.0 | 0 | 0.0% | 0.0 | 0.0 | 0 | 0.0% | 0.0 | 0.0 |
| AVERAGE AGE²: | 16.0 Yrs. | | | | 16.1 Yrs. | | | | 16.0 Yrs. | | | |

¹A cap imposed on Gilliam YSC by the Federal Court in FY 1995-96 resulted in decreased detention admissions and ADP's .

²Average age at detention admission has been recalculated for the past three years and are slightly higher than figures reported in previous manuals. In prior years these calculations were based on discrete (e.g., 16 years) values for age and are now based on continuous (e.g., 16.487) values.

DIVISION OF YOUTH CORRECTIONS

DETENTION POPULATION BY CHARGE, REASON HELD, AND LEGAL STATUS²

FY 1995-96 through FY 1997-98

| CHARGE | FY 1995-96 | | | | FY 1996-97 | | | | FY 1997-98 | | | |
|------------------------|---------------|-------------|--------------|--------------------|---------------|-------------|--------------|--------------------|---------------|-------------|--------------|--------------------|
| | No. of New | | LOS | | No. of New | | LOS | | No. of New | | LOS | |
| | Admission | % | ADP | days) ¹ | Admission | % | ADP | days) ¹ | Admission | % | ADP | days) ¹ |
| CHINO | 6 | 0.0% | 0.1 | 7.3 | 14 | 0.1% | 0.2 | 4.2 | 11 | 0.1% | 0.1 | 4.5 |
| Court Order | 5,949 | 42.9% | 265.8 | 12.7 | 6,055 | 41.3% | 257.5 | 15.1 | 6,951 | 45.1% | 302.5 | 15.4 |
| Courtesy | 1,203 | 8.7% | 99.4 | 28.6 | 1,733 | 11.8% | 83.9 | 18.9 | 1,404 | 9.1% | 76.6 | 23.7 |
| Delinquent | 3,899 | 28.1% | 133.7 | 12.2 | 4,287 | 29.3% | 140.6 | 11.9 | 4,984 | 32.3% | 175.1 | 12.4 |
| Depend. Neglect | 34 | 0.2% | 0.4 | 5.0 | 18 | 0.1% | 0.4 | 9.6 | 19 | 0.1% | 0.1 | 2.3 |
| Game-Fish | 0 | 0.0% | 0 | 0.0 | 2 | 0.0% | 0.0 | 1.3 | 7 | 0.0% | 0.1 | 4.3 |
| Interrupted | 954 | 6.9% | 26.2 | 10.0 | 880 | 6.0% | 23.7 | 9.9 | 745 | 4.8% | 21.4 | 10.5 |
| Park-Municipal | 1,138 | 8.2% | 6.8 | 2.2 | 1,171 | 8.0% | 9.9 | 3.1 | 876 | 5.7% | 7.4 | 2.8 |
| Runaway | 265 | 1.9% | 4.4 | 5.9 | 214 | 1.5% | 3.6 | 6.0 | 172 | 1.1% | 5.6 | 9.5 |
| Traffic | 410 | 3.0% | 4.3 | 3.5 | 278 | 1.9% | 2.9 | 4.5 | 259 | 1.7% | 2.9 | 3.6 |
| TOTAL | 13,858 | 100% | 541.1 | 13.7 | 14,652 | 100% | 522.7 | 13.0 | 15,428 | 100% | 591.8 | 13.9 |
| REASON HELD | | | | | | | | | | | | |
| Court | 7,310 | 52.7% | 259.5 | 9.8 | 7,401 | 50.5% | 258.2 | 12.4 | 7,122 | 46.2% | 272.6 | 13.5 |
| DYC | 1,264 | 9.1% | 109.4 | 30.1 | 1,733 | 11.8% | 91.1 | 20.4 | 1,535 | 9.9% | 100.6 | 27.3 |
| Parole | 118 | 0.9% | 6.5 | 20.0 | 112 | 0.8% | 4.5 | 14.3 | 182 | 1.2% | 7.7 | 16.1 |
| Police | 3,320 | 24.0% | 106.2 | 11.3 | 3,768 | 25.7% | 116.2 | 11.3 | 4,635 | 30.0% | 146.2 | 11.1 |
| Probation | 1,501 | 10.8% | 54.6 | 13.5 | 1,300 | 8.9% | 47.9 | 13.3 | 1,667 | 10.8% | 58.8 | 12.4 |
| Situational | 169 | 1.2% | 2.0 | 4.9 | 189 | 1.3% | 1.9 | 3.5 | 153 | 1.0% | 2.3 | 2.7 |
| Social Services | 176 | 1.3% | 3.1 | 6.5 | 149 | 1.0% | 2.7 | 6.8 | 134 | 0.9% | 3.6 | 9.6 |
| LEGAL STATUS | | | | | | | | | | | | |
| Preadjudicated | 10,012 | 72.2% | 299.4 | 10.8 | 10,814 | 73.8% | 328.8 | 10.9 | 10,937 | 70.9% | 342.8 | 9.8 |
| 703 Sentence | 53 | 0.4% | 1.3 | 8.9 | 46 | 0.3% | 1.1 | 8.4 | 79 | 0.5% | 2.5 | 8.5 |
| (# of Comp. Sentences) | (47) | | | | (31) | | | | (32) | | | |
| Boot Camp Sent. | 456 | 3.3% | 74.7 | 56.1 | 431 | 2.9% | 67.0 | 58.0 | 453 | 2.9% | 77.9 | 57.9 |
| (# of Comp. Sentences) | (375) | | | | (209) | | | | (2) | | | |
| Contempt Sent. | 300 | 2.2% | 7.0 | 8.1 | 420 | 2.9% | 5.8 | 5.2 | 167 | 1.1% | 2.5 | 5.8 |
| (# of Comp. Sentences) | (201) | | | | (198) | | | | (35) | | | |
| Game-Fish | 0 | 0.0% | 0.0 | 0.0 | 0 | 0.0% | 0.0 | 0.0 | 0 | 0.0% | 0.0 | 0.0 |
| (# of Comp. Sentences) | 0 | | | | 0 | | | | 0 | | | |
| Handgun Sent. | 63 | 0.5% | 1.4 | 9.6 | 34 | 0.2% | 0.8 | 6.2 | 18 | 0.1% | 0.2 | 7.3 |
| (# of Comp. Sentences) | (59) | | | | (24) | | | | (6) | | | |
| Municipal Sent. | 404 | 2.9% | 3.3 | 3.1 | 303 | 2.1% | 1.5 | 1.8 | 274 | 1.8% | 1.5 | 2.1 |
| (# of Comp. Sentences) | (379) | | | | -266 | | | | (63) | | | |
| Probation Sentence | 1,135 | 8.2% | 40.3 | 13.1 | 1,118 | 7.6% | 38.3 | 12.7 | 1,418 | 9.2% | 40.9 | 12.3 |
| (# of Comp. Sentences) | (834) | | | | (583) | | | | (447) | | | |
| Traffic Sent. | 67 | 0.5% | 2.3 | 11.5 | 43 | 0.3% | 1.5 | 12.1 | 23 | 0.1% | 0.6 | 11.9 |
| (# of Comp. Sentences) | (52) | | | | (33) | | | | (10) | | | |
| New Commitments | 0 | 0.0% | 0.0 | 0.0 | 0 | 0.0% | 0.0 | 0.0 | 835 | 5.4% | 40.6 | 43.6 |
| Return Commitments | 1,368 | 9.9% | 111.6 | 28.4 | 1,443 | 9.8% | 77.9 | 21.1 | 1,224 | 7.9% | 82.3 | 21.5 |

¹LOS calculations do not include Boot Camp.

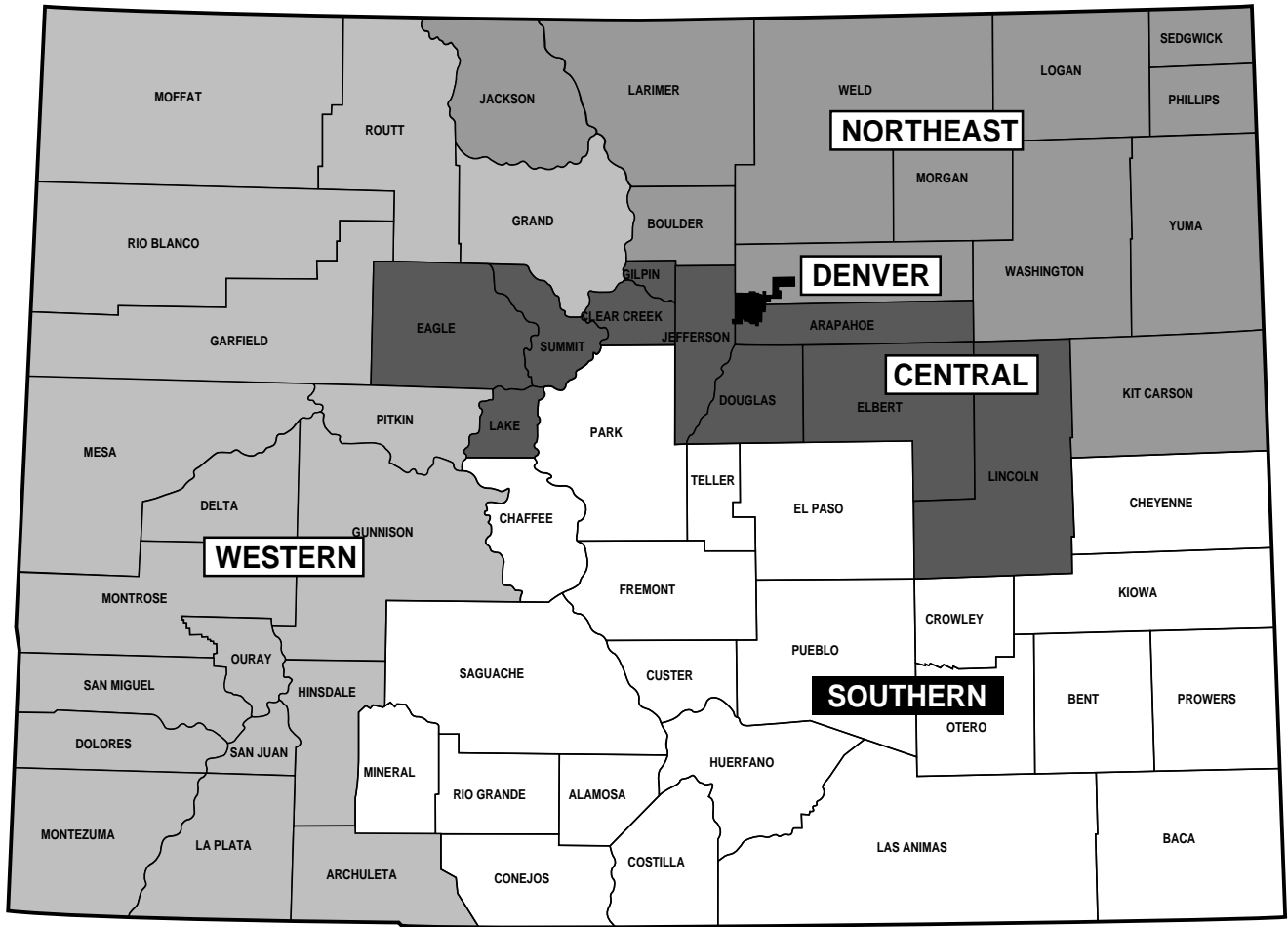
²A cap imposed on Gilliam YSC by the Federal Court in FY 1995-96 resulted in decreased detention admissions and average daily population.

**DIVISION OF YOUTH CORRECTIONS
DETENTION POPULATION CHARACTERISTICS BY GENDER
FY1996-97 AND FY1997-98**

| | MALES | | | | FEMALES | | | |
|---|-----------|--------|-----------|--------|-----------|--------|-----------|--------|
| | FY1996-97 | | FY1997-98 | | FY1996-97 | | FY1997-98 | |
| | n | % | n | % | n | % | n | % |
| DEMOGRAPHIC DATA¹ | | | | | | | | |
| Ethnicity | | | | | | | | |
| Anglo-American: | 5,286 | 45.1% | 5,645 | 46.9% | 1,471 | 50.3% | 1,621 | 47.9% |
| African-American: | 1,889 | 16.1% | 1,958 | 16.3% | 438 | 15.0% | 521 | 15.4% |
| Hispanic/Latino: | 4,228 | 36.1% | 4,090 | 34.0% | 958 | 32.7% | 1,168 | 34.5% |
| Native American: | 89 | 0.8% | 95 | 0.8% | 26 | 0.9% | 36 | 1.1% |
| Asian-American: | 81 | 0.7% | 111 | 0.9% | 16 | 0.5% | 15 | 0.4% |
| Other: | 152 | 1.3% | 142 | 1.2% | 18 | 0.6% | 26 | 0.8% |
| TOTAL ADMISSIONS | 11,725 | 100.0% | 12,041 | 100.0% | 2,927 | 100.0% | 3,387 | 100.0% |
| Age | | | | | | | | |
| 10 Years | 15 | 0.1% | 36 | 0.3% | 6 | 0.2% | 1 | 0.0% |
| 11 Years | 59 | 0.5% | 69 | 0.6% | 11 | 0.4% | 10 | 0.3% |
| 12 Years | 216 | 1.8% | 241 | 2.0% | 55 | 1.9% | 68 | 2.0% |
| 13 Years | 619 | 5.3% | 656 | 5.4% | 281 | 9.6% | 311 | 9.2% |
| 14 Years | 1,466 | 12.5% | 1,596 | 13.3% | 473 | 16.2% | 588 | 17.4% |
| 15 Years | 2,439 | 20.8% | 2,458 | 20.4% | 822 | 28.1% | 843 | 24.9% |
| 16 Years | 3,221 | 27.5% | 3,150 | 26.2% | 645 | 22.0% | 820 | 24.2% |
| 17 Years | 3,458 | 29.5% | 3,533 | 29.3% | 603 | 20.6% | 724 | 21.4% |
| 18 Years | 192 | 1.6% | 247 | 2.1% | 23 | 0.8% | 16 | 0.5% |
| 19 Years | 33 | 0.3% | 51 | 0.4% | 6 | 0.2% | 5 | 0.1% |
| 20 Years | 7 | 0.1% | 4 | 0.0% | 2 | 0.1% | 1 | 0.0% |
| Average Age at Admission ² : | 16.1 Yrs. | | 16.1 Yrs. | | 15.7 Yrs. | | 15.8 Yrs. | |
| DETENTION DATA¹ | | | | | | | | |
| Number of Prior Admissions | | | | | | | | |
| None: | 3,867 | 33.0% | 3,937 | 32.7% | 1,214 | 41.5% | 1,427 | 42.1% |
| One: | 2,086 | 17.8% | 2,343 | 19.5% | 641 | 21.9% | 647 | 19.1% |
| Two or more: | 5,772 | 49.2% | 5,761 | 47.8% | 1,072 | 36.6% | 1,313 | 38.8% |
| Charge | | | | | | | | |
| CHINO: | 12 | 0.1% | 8 | 0.1% | 2 | 0.1% | 3 | 0.1% |
| Court Order: | 4,688 | 40.0% | 5,344 | 44.4% | 1,367 | 46.7% | 1,607 | 47.4% |
| Courtesy: | 1,513 | 12.9% | 1,285 | 10.7% | 220 | 7.5% | 119 | 3.5% |
| Delinquent: | 3,638 | 31.0% | 4,151 | 34.5% | 649 | 22.2% | 833 | 24.6% |
| Depend-Neg.: | 12 | 0.1% | 6 | 0.0% | 6 | 0.2% | 13 | 0.4% |
| Game-Fish: | 1 | 0.0% | 5 | 0.0% | 1 | 0.0% | 2 | 0.1% |
| Interrupted: | 715 | 6.1% | 602 | 5.0% | 165 | 5.6% | 143 | 4.2% |
| Park-Municipal: | 830 | 7.1% | 394 | 3.3% | 341 | 11.7% | 482 | 14.2% |
| Runaway: | 96 | 0.8% | 53 | 0.4% | 118 | 4.0% | 119 | 3.5% |
| Traffic: | 220 | 1.9% | 193 | 1.6% | 58 | 2.0% | 66 | 1.9% |
| Reason Held | | | | | | | | |
| Court: | 5,688 | 48.5% | 5,265 | 43.7% | 1,713 | 58.5% | 1,857 | 54.8% |
| DYC: | 1,522 | 13.0% | 1,391 | 11.6% | 211 | 7.2% | 144 | 4.3% |
| Parole: | 99 | 0.8% | 151 | 1.3% | 13 | 0.4% | 31 | 0.9% |
| Police: | 3,205 | 27.3% | 3,831 | 31.8% | 563 | 19.2% | 804 | 23.7% |
| Probation: | 1,019 | 8.7% | 1,265 | 10.5% | 281 | 9.6% | 402 | 11.9% |
| Situational: | 142 | 1.2% | 97 | 0.8% | 47 | 1.6% | 56 | 1.7% |
| Social Service: | 50 | 0.4% | 41 | 0.3% | 99 | 3.4% | 93 | 2.7% |
| Legal Status | | | | | | | | |
| Preadjudicated: | 8,567 | 73.1% | 8,271 | 68.7% | 2,247 | 76.8% | 2,667 | 78.7% |
| 703 Sentences: | 37 | 0.3% | 63 | 0.5% | 9 | 0.3% | 16 | 0.5% |
| Boot Camp Sentences: | 431 | 3.7% | 451 | 3.7% | 0 | 0.0% | 1 | 0.0% |
| Contempt Sentences: | 195 | 1.7% | 78 | 0.6% | 225 | 7.7% | 89 | 2.6% |
| Game-Fish Sentences: | 0 | 0.0% | 0 | 0.0% | 0 | 0.0% | 0 | 0.0% |
| Handgun Sentences: | 32 | 0.3% | 18 | 0.1% | 2 | 0.1% | 0 | 0.0% |
| Municipal Sentences: | 195 | 1.7% | 173 | 1.4% | 108 | 3.7% | 101 | 3.0% |
| Probation Sentences: | 939 | 8.0% | 1,128 | 9.4% | 179 | 6.1% | 290 | 8.6% |
| Traffic Sentences: | 41 | 0.3% | 18 | 0.1% | 2 | 0.1% | 5 | 0.1% |
| Return Commitment: | 1,288 | 11.0% | 1,841 | 15.3% | 155 | 5.3% | 218 | 6.4% |
| POPULATION DATA | | | | | | | | |
| Average Daily Population | | | | | | | | |
| Preadjudicated: | 277.5 | | 276.6 | | 51.3 | | 66.1 | |
| Sentenced: | 105.4 | | 113.7 | | 10.5 | | 12.4 | |
| Committed: | 14.0 | | 39.3 | | 2.6 | | 7.1 | |
| Committed Awaiting Placement: | 50.8 | | 67.1 | | 10.6 | | 9.4 | |
| TOTAL: | 447.7 | | 496.7 | | 74.9 | | 95.1 | |
| Average Length of Stay (days): | 13.8 | | 15.1 | | 9.7 | | 9.7 | |

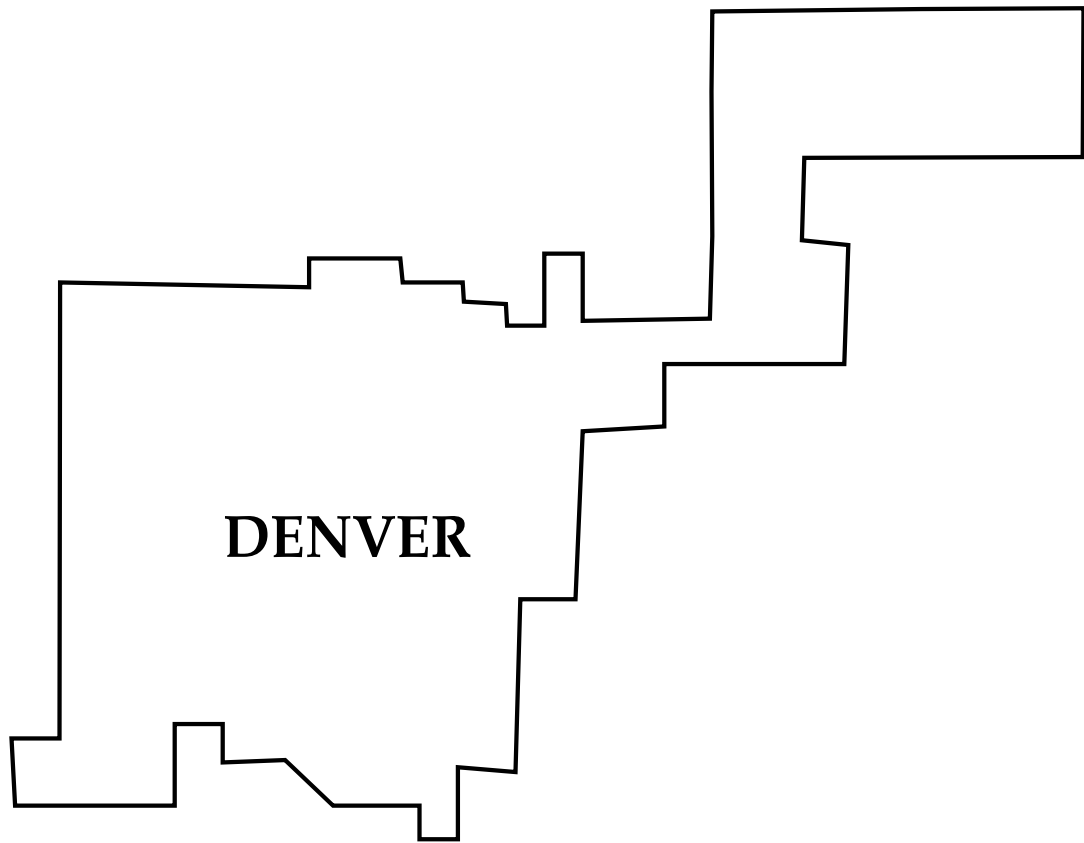
¹Detention data and demographic data are based on number of admissions. A youth may be admitted more than once during the year.

²Average age at detention admission has been recalculated for the past three years and are slightly higher than figures reported in previous manuals. In prior years these calculations were based on discrete (e.g., 16 years) values for age and are now based on continuous (e.g., 16.487) values.



SECTION IV

REGIONAL SUMMARIES



DENVER REGION

**DENVER REGION
FY 1996-97 AND FY 1997-98
COMMITTED YOUTH**

| POPULATION DATA | FY 1996-97 | | FY 1997-98 | | DEMOGRAPHIC DATA ¹ | FY 1996-97 | | FY 1997-98 | |
|--------------------------------------|------------|----------|------------|----------|--|-------------------|-------------------|------------|------|
| | n | % | n | % | | n | % | n | % |
| Number of New Commitments: | 135 | | 144 | | Sex | | | | |
| Average Daily Population Assessment: | 10.4 | | 11.3 | | Male: | 123 | 91% | 124 | 86% |
| Orientation: | 14.1 | | 16.2 | | Female: | 12 | 9% | 20 | 14% |
| Intensive Secure: | 122.8 | | 91.8 | | TOTAL | 135 | 100% | 144 | 100% |
| Medium Care: | 53.1 | | 51.4 | | Ethnicity | | | | |
| Community Residential: | 31.5 | | 29.9 | | Anglo-American: | 13 | 10% | 13 | 9% |
| TOTAL | 231.8 | | 200.6 | | African-American: | 50 | 37% | 56 | 39% |
| Average LOS (months) | | | | | Hispanic/Latino: | 68 | 50% | 65 | 45% |
| Intensive Secure: | 13.7 | | 11.9 | | Native-American: | 2 | 1% | 5 | 3% |
| Medium Secure: | 5.6 | | 6.9 | | Asian-American: | 1 | 1% | 4 | 3% |
| Community Residential: | 5.2 | | 5.7 | | Other: | 1 | 1% | 1 | 1% |
| Total Residential: | 16.9 | | 15.3 | | TOTAL | 135 | 100% | 144 | 100% |
| Total Commitment: | 25.7 | | 23.8 | | Age at Commitment: | | | | |
| | | | | | 12 Years | 1 | 1% | 3 | 2% |
| COMMITMENT DATA | n | % | n | % | 13 Years | 6 | 4% | 8 | 6% |
| Type of Commitment ¹ | | | | | 14 Years | 15 | 11% | 11 | 8% |
| Non-Mandatory: | 87 | 64% | 62 | 43% | 15 Years | 27 | 20% | 29 | 20% |
| Mandatory: | 36 | 27% | 67 | 47% | 16 Years | 33 | 24% | 47 | 33% |
| Repeat: | 11 | 8% | 14 | 10% | 17 Years | 50 | 37% | 43 | 30% |
| Violent: | 0 | 0% | 0 | 0% | 18 Years | 3 | 2% | 2 | 1% |
| Aggravated Juvenile: | 1 | 1% | 1 | 1% | 19 Years | 0 | 0% | 1 | 1% |
| Adult: | 0 | 0% | 0 | 0% | 20 Years | 0 | 0% | 0 | 0% |
| TOTAL | 135 | 100% | 144 | 100% | 21 Years | 0 | 0% | 0 | 0% |
| | | | | | TOTAL | 135 | 100% | 144 | 100% |
| | | | | | Average Age at Commitment ² : | 16.3 Yrs. | | 16.3 Yrs. | |
| Breakdown of Sentences | | | | | PAROLE DATA | FY 1996-97 | FY 1997-98 | | |
| New Commitments: | 135 | 75% | 144 | 78% | No. Youth Served on Parole: | 148 | | 123 | |
| Concurrent: | 37 | 20% | 40 | 22% | Average Daily Population ³ : | 49.9 | | 50.4 | |
| Consecutive: | 9 | 5% | 1 | 1% | No. Youth Discharged from Parole: | 94 | | 86 | |
| TOTAL | 181 | 100% | 185 | 100% | Average LOS on Parole (mos.): | 6.9 | | 6.6 | |
| New Commitment Classification | | | | | Cell 11 | 2 | 1% | 1 | 1% |
| Cell 1 | 1 | 1% | 1 | 1% | Cell 12 | 17 | 13% | 15 | 10% |
| Cell 2 | 4 | 3% | 3 | 2% | Cell 13 | 24 | 18% | 27 | 19% |
| Cell 3 | 8 | 6% | 1 | 1% | Cell 14 | 9 | 7% | 12 | 8% |
| Cell 4 | 6 | 4% | 3 | 2% | Cell 15 | 0 | 0% | 0 | 0% |
| Cell 5 | 5 | 4% | 2 | 1% | Cell 16 | 3 | 2% | 6 | 4% |
| Cell 6 | 0 | 0% | 0 | 0% | Cell 17 | 13 | 10% | 21 | 15% |
| Cell 7 | 2 | 1% | 4 | 3% | Cell 18 | 12 | 9% | 11 | 8% |
| Cell 8 | 8 | 6% | 13 | 9% | Cell 19 ⁴ | 0 | - | 0 | - |
| Cell 9 | 8 | 6% | 12 | 8% | Cell 20 ⁴ | 0 | - | 0 | - |
| Cell 10 | 13 | 10% | 12 | 8% | Cell Not Available | 0 | 0% | 0 | - |

¹Data are based on NEW commitments.

²Average ages at commitment for the two years shown above have been recalculated and are slightly higher than previously reported. In prior years, these calculations were based on discrete values (e.g., 16 years) for age and are now based on continuous values (e.g., 16.487 years).

³Average daily population is the average number of active youth on parole during the time period. Youth on parole who were on escape status during the time period are not included.

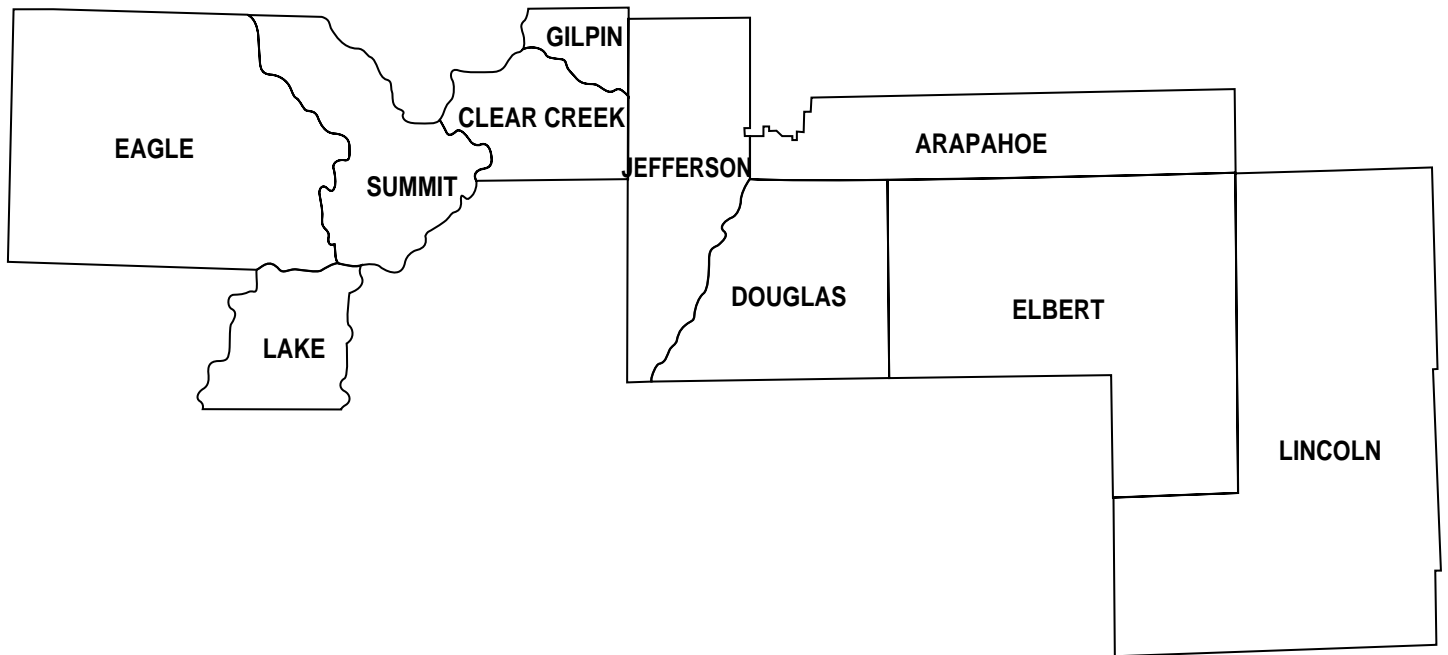
⁴Scoring of the new classification grid does not allow youth to fall into this cell.

**DENVER REGION
FY 1996-97 AND FY 1997-98
DETAINED YOUTH¹**

| | <u>FY 1996-97</u> | | <u>FY 1997-98</u> | | | <u>FY 1996-97</u> | | <u>FY 1997-98</u> | |
|---------------------------|-------------------|----------|-------------------|----------|---|-------------------|----------|-------------------|----------|
| POPULATION DATA | | | | | DEMOGRAPHIC DATA | | | | |
| Number of Intakes: | 3,683 | | 3,695 | | | n | % | n | % |
| Number of Admissions: | 3,676 | | 3,693 | | Sex | | | | |
| Average Daily Population: | 121.3 | | 130.9 | | Male: | 2,897 | 79% | 2,682 | 73% |
| Average LOS (days): | 12.3 | | 13.1 | | Female: | 779 | 21% | 1,011 | 27% |
| DETENTION DATA | | | | | | | | | |
| | n | % | n | % | TOTAL: | 3,676 | 100% | 3,693 | 100% |
| Charge | | | | | | | | | |
| CHINO: | 10 | 0% | 0 | 0% | Ethnicity | | | | |
| Court Order: | 890 | 24% | 1,115 | 30% | Anglo-American: | 636 | 17% | 592 | 16% |
| Courtesy: | 579 | 16% | 520 | 14% | African-American: | 1,139 | 31% | 1,174 | 32% |
| Delinquent: | 1,544 | 42% | 1,632 | 44% | Hispanic/Latino: | 1,788 | 49% | 1,809 | 49% |
| Depend-Neg.: | 2 | 0% | 0 | 0% | Native-American: | 39 | 1% | 46 | 1% |
| Game-Fish: | 0 | 0% | 1 | 0% | Asian-American: | 12 | 0% | 23 | 1% |
| Interrupted: | 34 | 1% | 38 | 1% | Other: | 62 | 2% | 49 | 1% |
| Park-Municipal: | 467 | 13% | 258 | 7% | TOTAL: | 3,676 | 100% | 3,693 | 100% |
| Runaway: | 112 | 3% | 106 | 3% | | | | | |
| Traffic: | 38 | 1% | 23 | 1% | | | | | |
| TOTAL | 3,676 | 100% | 3,693 | 100% | | | | | |
| Reason Held | | | | | Age at Admission | | | | |
| Court: | 1,388 | 38% | 1,212 | 33% | 10 Years | 10 | 0% | 14 | 0% |
| DYC: | 560 | 15% | 542 | 15% | 11 Years | 28 | 1% | 30 | 1% |
| Parole: | 31 | 1% | 61 | 2% | 12 Years | 79 | 2% | 84 | 2% |
| Police: | 1,310 | 36% | 1,498 | 41% | 13 Years | 242 | 7% | 287 | 8% |
| Probation: | 234 | 6% | 261 | 7% | 14 Years | 490 | 13% | 486 | 13% |
| Situational: | 89 | 2% | 56 | 2% | 15 Years | 819 | 22% | 807 | 22% |
| Social Service: | 64 | 2% | 63 | 2% | 16 Years | 911 | 25% | 971 | 26% |
| TOTAL | 3,676 | 100% | 3,693 | 100% | 17 Years | 1,062 | 29% | 920 | 25% |
| Legal Status | | | | | 18 Years | 24 | 1% | 66 | 2% |
| Preadjudicated: | 3,166 | 86% | 2,863 | 78% | 19 Years | 9 | 0% | 25 | 1% |
| 703 Sentences: | 0 | 0% | 0 | 0% | 20 Years | 2 | 0% | 3 | 0% |
| Boot Camp Sentences: | 20 | 1% | 18 | 0% | Over 20 Years | 0 | 0% | 0 | 0% |
| Contempt Sentences: | 5 | 0% | 21 | 1% | TOTAL: | 3,676 | 100% | 3,693 | 100% |
| Game-Fish Sentences: | 0 | 0% | 0 | 0% | | | | | |
| Handgun Sentences: | 0 | 0% | 0 | 0% | Average Age at Admission ² : | 16.0 Yrs. | | 16.0 Yrs. | |
| Municipal Sentences: | 9 | 0% | 1 | 0% | | | | | |
| Probation Sentences: | 162 | 4% | 259 | 7% | | | | | |
| Traffic Sentences: | 1 | 0% | 0 | 0% | | | | | |
| Return Commitment: | 313 | 9% | 531 | 14% | | | | | |
| TOTAL: | 3,676 | 100% | 3,693 | 100% | | | | | |

¹Detention data and demographic data are based on number of admissions. A youth may be admitted more than once during the year. Figures include youth from other states/countries admitted to DYC-operated detention centers in this region.

²Average age at detention admission has been recalculated for the past three years and are slightly higher than figures reported in previous manuals. In prior years these calculations were based on discrete (e.g., 16 years) values for age and are now based on continuous (e.g., 16.487) values.



CENTRAL REGION

**CENTRAL REGION
FY 1996-97 AND FY1997-98
COMMITTED YOUTH**

| POPULATION DATA | FY 1996-97 | | FY 1997-98 | | DEMOGRAPHIC DATA ¹ | FY 1996-97 | | FY 1997-98 | |
|--------------------------------------|------------|----------|------------|----------|--|-------------------|------|-------------------|------|
| | n | % | n | % | | n | % | n | % |
| Number of New Commitments: | 153 | | 171 | | Sex | | | | |
| Average Daily Population Assessment: | 15.0 | | 0.3 | | Male: | 133 | 87% | 148 | 87% |
| Orientation | 15.1 | | 17.6 | | Female: | 20 | 13% | 23 | 13% |
| Intensive Secure: | 73.8 | | 73.1 | | TOTAL | 153 | 100% | 171 | 100% |
| Medium Care: | 58.1 | | 77.6 | | Ethnicity | | | | |
| Community Residential: | 37.8 | | 42.2 | | Anglo-American: | 113 | 74% | 121 | 71% |
| TOTAL | 199.7 | | 210.8 | | African-American: | 22 | 14% | 23 | 13% |
| Average LOS (months) | | | | | Hispanic/Latino: | 15 | 10% | 23 | 13% |
| Intensive Secure: | 15.0 | | 11.9 | | Native-American: | 0 | 0% | 0 | 0% |
| Medium Secure: | 5.9 | | 6.9 | | Asian-American: | 1 | 1% | 0 | 0% |
| Community Residential: | 5.9 | | 5.7 | | Other: | 2 | 1% | 4 | 2% |
| Total Residential: | 15.5 | | 15.3 | | TOTAL | 153 | 100% | 171 | 100% |
| Total Commitment: | 24.1 | | 23.8 | | Age at Commitment: | | | | |
| | | | | | 12 Years | 1 | 1% | 2 | 1% |
| COMMITMENT DATA | n | % | n | % | 13 Years | 4 | 3% | 8 | 5% |
| Type of Commitment ¹ | | | | | 14 Years | 14 | 9% | 18 | 11% |
| Non-Mandatory: | 90 | 59% | 88 | 51% | 15 Years | 36 | 24% | 39 | 23% |
| Mandatory: | 52 | 34% | 66 | 39% | 16 Years | 45 | 29% | 49 | 29% |
| Repeat: | 10 | 7% | 16 | 9% | 17 Years | 50 | 33% | 48 | 28% |
| Violent: | 1 | 1% | 0 | 0% | 18 Years | 3 | 2% | 7 | 4% |
| Aggravated Juvenile: | 0 | 0% | 1 | 1% | 19 Years | 0 | 0% | 0 | 0% |
| Adult: | 0 | 0% | 0 | 0% | 20 Years | 0 | 0% | 0 | 0% |
| TOTAL | 153 | 100% | 171 | 100% | 21 Years | 0 | 0% | 0 | 0% |
| | | | | | TOTAL | 153 | 100% | 171 | 100% |
| Breakdown of Sentences | | | | | Average Age at Commitment ² : | 16.4 Yrs. | | 16.2 Yrs. | |
| New Commitments: | 153 | 74% | 171 | 77% | PAROLE DATA | FY 1996-97 | | FY 1997-98 | |
| Concurrent: | 53 | 26% | 46 | 21% | No. Youth Served on Parole: | 150 | | 142 | |
| Consecutive: | 1 | 0% | 4 | 2% | Average Daily Population ³ : | 55.3 | | 63.7 | |
| TOTAL | 207 | 100% | 221 | 100% | No. Youth Discharged from Parole: | 67 | | 93 | |
| | | | | | Average LOS on Parole (mos.): | 7.3 | | 7.8 | |
| New Commitment Classification | | | | | | | | | |
| Cell 1 | 1 | 1% | 0 | 0% | Cell 11 | 0 | 0% | 1 | 1% |
| Cell 2 | 1 | 1% | 3 | 2% | Cell 12 | 12 | 8% | 18 | 11% |
| Cell 3 | 5 | 3% | 6 | 4% | Cell 13 | 42 | 27% | 34 | 20% |
| Cell 4 | 7 | 5% | 8 | 5% | Cell 14 | 21 | 14% | 28 | 16% |
| Cell 5 | 1 | 1% | 5 | 3% | Cell 15 | 0 | 0% | 0 | 0% |
| Cell 6 | 0 | 0% | 0 | 0% | Cell 16 | 0 | 0% | 6 | 4% |
| Cell 7 | 1 | 1% | 2 | 1% | Cell 17 | 16 | 10% | 23 | 13% |
| Cell 8 | 8 | 5% | 4 | 2% | Cell 18 | 18 | 12% | 13 | 8% |
| Cell 9 | 11 | 7% | 10 | 6% | Cell 19 ⁴ | 0 | - | 0 | - |
| Cell 10 | 9 | 6% | 9 | 5% | Cell 20 ⁴ | 0 | - | 0 | - |
| | | | | | Cell Not Available | 0 | 0% | 1 | - |

¹Data are based on NEW commitments.

²Average ages at commitment for the two years shown above have been recalculated and are slightly higher than previously reported. In prior years, these calculations were based on discrete values (e.g., 16 years) for age and are now based on continuous values (e.g., 16.487 years).

³Average daily population is the average number of active youth on parole during the time period.

Youth on parole who were on escape status during the time period are not included.

⁴Scoring of the new classification grid does not allow youth to fall into this cell.

**CENTRAL REGION
POPULATION DATA ON COMMITTED YOUTH
BY COUNTY OF RESIDENCE**

| County | FY 1996-97 | | | FY 1997-98 | | |
|----------------------------|----------------|--------------|-----------------------|----------------|--------------|-----------------------|
| | New Commits | ADP | Res. LOS (mos.) | New Commits | ADP | Res. LOS (mos.) |
| Arapahoe | 52 | 74.8 | 16.8 | 66 | 77.2 | 14.7 |
| Clear Creek | 1 | 0.8 | 11.3 | 0 | 0.3 | 5.8 |
| Douglas | 8 | 8.2 | 13.7 | 12 | 11.9 | 17.6 |
| Eagle | 3 | 1.3 | 13.6 | 5 | 3.2 | 9.0 |
| Elbert | 0 | 1.6 | 5.9 | 1 | 1.1 | 14.6 |
| Gilpin | 0 | 0.0 | 0.0 | 0 | 0.0 | 0.0 |
| Jefferson | 83 | 107.6 | 15.2 | 86 | 113.4 | 16.2 |
| Lake | 1 | 2.0 | 15.2 | 1 | 1.6 | 19.3 |
| Lincoln | 1 | 0.8 | 0.0 | 0 | 0.1 | 11.2 |
| Summit | 1 | 1.7 | 13.1 | 0 | 0.7 | 15.6 |
| Other States/ Countries | 3 | 0.9 | 6.1 | 0 | 1.3 | 0.0 |
| TOTALS | 153 | 199.7 | 15.5 | 171 | 210.8 | 15.3 |

**CENTRAL REGION
FY 1996-97 AND FY 1997-98
DETAINED YOUTH¹**

| POPULATION DATA | <u>FY 1996-97</u> | | <u>FY 1997-98</u> | | | | | | |
|---|-------------------|-------------|-------------------|-------------|--|----------|-----------|----------|-----|
| Number of Intakes: | 4,694 | | 3,775 | | | | | | |
| Number of Admissions ² : | 4,687 | | 3,760 | | | | | | |
| Average Daily Population ² : | 160.4 | | 151.3 | | | | | | |
| Average LOS (days): | 12.5 | | 14.6 | | | | | | |
| | | | | | DEMOGRAPHIC | | | | |
| | | | | | DATA | | | | |
| | | | | | n | % | n | % | |
| | | | | | Sex | | | | |
| | | | | | Male: | 3,699 | 79% | 2,954 | 79% |
| | | | | | Female: | 988 | 21% | 806 | 21% |
| | | | | | TOTAL: | | | | |
| | | | | | 4,687 | 100% | 3,760 | 100% | |
| | | | | | Demographic | | | | |
| | | | | | Ethnicity | | | | |
| | | | | | Anglo-American: | 3,048 | 65% | 2,376 | 63% |
| | | | | | African-American: | 552 | 12% | 552 | 15% |
| | | | | | Hispanic/Latino: | 929 | 20% | 709 | 19% |
| | | | | | Native-American: | 21 | 0% | 25 | 1% |
| | | | | | Asian-American: | 75 | 2% | 52 | 1% |
| | | | | | Other: | 62 | 1% | 46 | 1% |
| | | | | | TOTAL: | | | | |
| | | | | | 4,687 | 100% | 3,760 | 100% | |
| | | | | | DETENTION DATA | | | | |
| | | | | | n | % | n | % | |
| Charge | | | | | | | | | |
| CHINO: | 0 | 0% | 2 | 0% | | | | | |
| Court Order: | 2,265 | 48% | 1,829 | 49% | | | | | |
| Courtesy: | 498 | 11% | 280 | 7% | | | | | |
| Delinquent: | 881 | 19% | 1,081 | 29% | | | | | |
| Depend-Neg.: | 0 | 0% | 0 | 0% | | | | | |
| Game-Fish: | 1 | 0% | 2 | 0% | | | | | |
| Interrupted: | 534 | 11% | 208 | 6% | | | | | |
| Park-Municipal: | 423 | 9% | 278 | 7% | | | | | |
| Runaway: | 7 | 0% | 5 | 0% | | | | | |
| Traffic: | 78 | 2% | 75 | 2% | | | | | |
| TOTAL | 4,687 | 100% | 3,760 | 100% | | | | | |
| | | | | | Reason Held | | | | |
| Court: | 2,979 | 64% | 1,997 | 53% | | | | | |
| DYC: | 518 | 11% | 376 | 10% | | | | | |
| Parole: | 37 | 1% | 54 | 1% | | | | | |
| Police: | 837 | 18% | 953 | 25% | | | | | |
| Probation: | 281 | 6% | 350 | 9% | | | | | |
| Situational: | 31 | 1% | 27 | 1% | | | | | |
| Social Service: | 4 | 0% | 3 | 0% | | | | | |
| TOTAL | 4,687 | 100% | 3,760 | 100% | | | | | |
| | | | | | Age at Admission | | | | |
| | | | | | 10 Years | 5 | 0% | 5 | 0% |
| | | | | | 11 Years | 18 | 0% | 12 | 0% |
| | | | | | 12 Years | 77 | 0% | 87 | 0% |
| | | | | | 13 Years | 272 | 2% | 225 | 2% |
| | | | | | 14 Years | 619 | 6% | 530 | 6% |
| | | | | | 15 Years | 1,095 | 13% | 872 | 14% |
| | | | | | 16 Years | 1,251 | 23% | 930 | 23% |
| | | | | | 17 Years | 1,249 | 27% | 1,003 | 25% |
| | | | | | 18 Years | 83 | 27% | 79 | 27% |
| | | | | | 19 Years | 12 | 2% | 16 | 2% |
| | | | | | 20 Years | 6 | 0% | 1 | 0% |
| | | | | | Over 20 Years | 0 | 0% | 0 | 0% |
| | | | | | TOTAL: | | | | |
| | | | | | 4,687 | 100% | 3,760 | 100% | |
| | | | | | Legal Status | | | | |
| Preadjudicated: | 3,081 | 66% | 2,505 | 67% | | | | | |
| 703 Sentences: | 9 | 0% | 17 | 0% | | | | | |
| Boot Camp Sentences: | 122 | 3% | 85 | 2% | | | | | |
| Contempt Sentences: | 365 | 8% | 113 | 3% | | | | | |
| Game-Fish Sentences: | 0 | 0% | 0 | 0% | | | | | |
| Handgun Sentences: | 15 | 0% | 10 | 0% | | | | | |
| Municipal Sentences: | 151 | 3% | 113 | 3% | | | | | |
| Probation Sentences: | 530 | 11% | 421 | 11% | | | | | |
| Traffic Sentences: | 9 | 0% | 6 | 0% | | | | | |
| Return Commitment: | 405 | 9% | 490 | 13% | | | | | |
| TOTAL: | 4,687 | 100% | 3,760 | 100% | | | | | |
| | | | | | Average Age at Admission³: | | | | |
| | | | | | 16.1 Yrs. | | 16.0 Yrs. | | |

¹Detention Data and demographic data are based on number of admissions. A youth may be admitted more than once during the year. Figures include youth from other states/countries admitted to DYC-operated detention centers in this region.

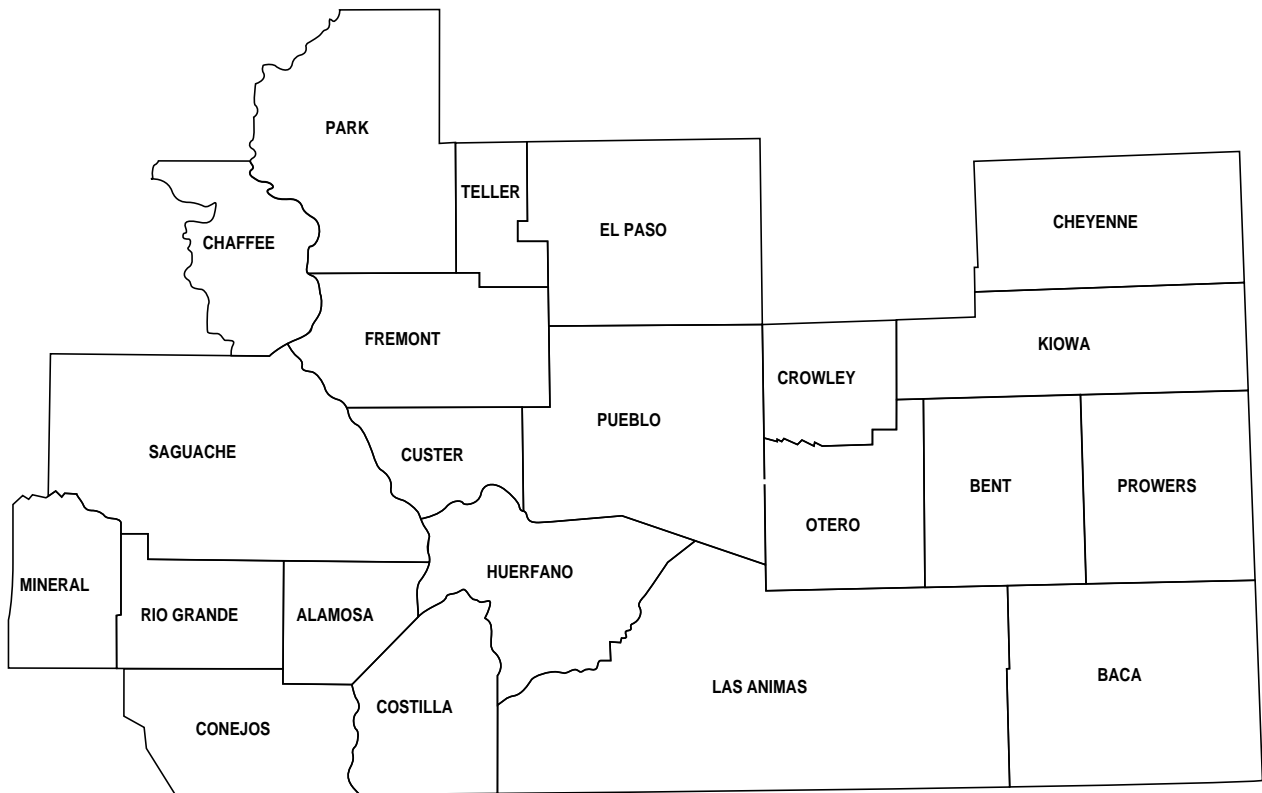
²Boulder County detained youth came under Northeastern DYC Management Region jurisdiction in FY1997-98 resulting in decreased admissions and average daily population in the Central Region.

³Average age at detention admission has been recalculated for the past three years and are slightly higher than figures reported in previous manuals. In prior years these calculations were based on discrete (e.g., 16 years) values for age and are now based on continuous (e.g., 16.487) values.

**CENTRAL REGION
POPULATION DATA ON DETAINED YOUTH
BY COUNTY**

| County of Offense | FY 1996-97 | | | FY 1997-98 | | |
|----------------------------|--------------|--------------|---------------|--------------|--------------|---------------|
| | Admissions | ADP | LOS (Days) | Admissions | ADP | LOS (Days) |
| Arapahoe | 1,759 | 56.7 | 11.5 | 1,566 | 61.7 | 14.3 |
| Boulder ¹ | 783 | 22.9 | 10.7 | NA | NA | NA |
| Clear Creek | 11 | 1.0 | 32.6 | 9 | 0.5 | 22.3 |
| Douglas | 200 | 8.2 | 14.9 | 219 | 10.7 | 17.2 |
| Eagle | 91 | 4.3 | 15.6 | 62 | 4.0 | 25.0 |
| Elbert | 25 | 1.0 | 14.4 | 24 | 1.2 | 17.9 |
| Gilpin | 5 | 0.1 | 4.8 | 7 | 0.4 | 19.4 |
| Jefferson | 1,714 | 61.0 | 13.2 | 1,781 | 69.5 | 14.2 |
| Lake | 35 | 1.8 | 18.6 | 24 | 1.3 | 19.7 |
| Lincoln | 7 | 0.4 | 18.6 | 9 | 0.3 | 12.0 |
| Summit | 48 | 3.1 | 23.0 | 35 | 1.0 | 10.5 |
| Other States/ Countries | 9 | 0.2 | 8.6 | 24 | 0.8 | 10.9 |
| TOTALS | 4,687 | 160.4 | 12.5 | 3,760 | 151.3 | 14.6 |

¹Boulder County detention admissions came under Northeastern DYC Management Region jurisdiction in FY1997-98.



SOUTHERN REGION

**SOUTHERN REGION
FY 1996-97 AND FY 1997-98
COMMITTED YOUTH**

| POPULATION DATA | FY 1996-97 | | FY 1997-98 | | DEMOGRAPHIC DATA ¹ | FY 1996-97 | | FY 1997-98 | |
|--------------------------------------|------------|----------|------------|----------|--|-------------------|-------------------|------------|------|
| | n | % | n | % | | n | % | n | % |
| Number of New Commitments: | 185 | | 199 | | Sex | | | | |
| Average Daily Population Assessment: | 12.0 | | 15.6 | | Male: | 174 | 94% | 176 | 88% |
| Orientation: | 18.5 | | 21.7 | | Female: | 11 | 6% | 23 | 12% |
| Intensive Secure: | 86.3 | | 107.4 | | TOTAL | 185 | 100% | 199 | 100% |
| Medium Care: | 44.3 | | 24.4 | | Ethnicity | | | | |
| Community Residential: | 34.1 | | 40.6 | | Anglo-American: | 70 | 38% | 94 | 47% |
| TOTAL | 195.1 | | 209.7 | | African-American: | 22 | 12% | 31 | 16% |
| Average LOS (months) | | | | | Hispanic/Latino: | 88 | 48% | 71 | 36% |
| Intensive Secure: | 12.9 | | 10.7 | | Native-American: | 1 | 1% | 0 | 0% |
| Medium Secure: | 5.5 | | 6.6 | | Asian-American: | 0 | 0% | 0 | 0% |
| Community Residential: | 5.6 | | 5.7 | | Other: | 4 | 2% | 3 | 2% |
| Total Residential: | 13.0 | | 12.8 | | TOTAL | 185 | 100% | 199 | 100% |
| Total Commitment: | 21.2 | | 20.1 | | Age at Commitment: | | | | |
| | | | | | 12 Years | 0 | 0% | 1 | 1% |
| | | | | | 13 Years | 9 | 5% | 4 | 2% |
| COMMITMENT DATA | n | % | n | % | 14 Years | 25 | 14% | 29 | 15% |
| Type of Commitment ¹ | | | | | 15 Years | 34 | 18% | 47 | 24% |
| Non-Mandatory: | 122 | 66% | 136 | 68% | 16 Years | 66 | 36% | 64 | 32% |
| Mandatory: | 47 | 25% | 48 | 24% | 17 Years | 51 | 28% | 48 | 24% |
| Repeat: | 16 | 9% | 10 | 5% | 18 Years | 0 | 0% | 6 | 3% |
| Violent: | 0 | 0% | 2 | 1% | 19 Years | 0 | 0% | 0 | 0% |
| Aggravated Juvenile: | 0 | 0% | 3 | 2% | 20 Years | 0 | 0% | 0 | 0% |
| Adult: | 0 | 0% | 0 | 0% | 21 Years | 0 | 0% | 0 | 0% |
| TOTAL | 185 | 100% | 199 | 100% | TOTAL | 185 | 100% | 199 | 100% |
| | | | | | Average Age at Commitment ² : | 16.2 Yrs. | | 16.2 Yrs. | |
| Breakdown of Sentences | | | | | | | | | |
| New Commitments: | 185 | 88% | 199 | 83% | PAROLE DATA | FY 1996-97 | FY 1997-98 | | |
| Concurrent: | 26 | 12% | 35 | 15% | No. Youth Served on Parole: | 135 | 131 | | |
| Consecutive: | 0 | 0% | 6 | 3% | Average Daily Population ³ : | 50.8 | 57.8 | | |
| TOTAL | 211 | 100% | 240 | 100% | No. youth Discharged from Parole: | 77 | 95 | | |
| New Commitment Classification | | | | | Average LOS on Parole (mos.): | 8.4 | 6.7 | | |
| Cell 1 | 0 | 0% | 0 | 0% | Cell 11 | 1 | 1% | 3 | 2% |
| Cell 2 | 7 | 4% | 5 | 3% | Cell 12 | 19 | 10% | 17 | 9% |
| Cell 3 | 11 | 6% | 8 | 4% | Cell 13 | 37 | 20% | 43 | 22% |
| Cell 4 | 8 | 4% | 8 | 4% | Cell 14 | 32 | 17% | 24 | 12% |
| Cell 5 | 3 | 2% | 1 | 1% | Cell 15 | 0 | 0% | 0 | 0% |
| Cell 6 | 0 | 0% | 0 | 0% | Cell 16 | 1 | 1% | 3 | 2% |
| Cell 7 | 5 | 3% | 6 | 3% | Cell 17 | 16 | 9% | 19 | 10% |
| Cell 8 | 11 | 6% | 17 | 9% | Cell 18 | 17 | 9% | 15 | 8% |
| Cell 9 | 11 | 6% | 13 | 7% | Cell 19 ⁴ | 0 | - | 0 | - |
| Cell 10 | 6 | 3% | 12 | 6% | Cell 20 ⁴ | 0 | - | 0 | - |
| | | | | | Cell Not Available | 0 | 0% | 5 | 3% |

¹Data are based on NEW commitments.

²Average ages at commitment for the two years shown above have been recalculated and are slightly higher than previous years, these calculations were based on discrete values (e.g., 16 years) for age and are now based on continuous values (e.g., 16.487 years).

³Average daily population is the average number of active youth on parole during the time period.

youth on parole who were on escape status during the time period are not included.

⁴Scoring of the new classification grid does not allow youth to fall into this cell.

**SOUTHERN REGION
POPULATION DATA ON COMMITTED YOUTH
BY COUNTY OF RESIDENCE**

| County | FY 1996-97 | | | FY 1997-98 | | |
|----------------------------|----------------|--------------|-----------------------|----------------|--------------|-----------------------|
| | New Commits | Res. ADP | Res. LOS (mos.) | New Commits | Res. ADP | Res. LOS (mos.) |
| Alamosa | 6 | 5.9 | 11.3 | 9 | 6.9 | 13.6 |
| Baca | 0 | 0.0 | 0.0 | 0 | 0.0 | 0.0 |
| Bent | 3 | 2.6 | 0.0 | 0 | 1.5 | 18.8 |
| Chaffee | 3 | 1.4 | 0.0 | 3 | 1.3 | 7.8 |
| Cheyenne | 0 | 0.0 | 0.0 | 0 | 0.0 | 0.0 |
| Conejos | 1 | 2.0 | 3.6 | 4 | 2.4 | 13.5 |
| Costilla | 0 | 0.9 | 0.0 | 1 | 0.5 | 15.8 |
| Crowley | 1 | 0.8 | 9.0 | 1 | 0.8 | 19.9 |
| Custer | 0 | 0.0 | 0.0 | 1 | 0.5 | 0.0 |
| El Paso | 79 | 92.8 | 15.6 | 98 | 119.5 | 16.4 |
| Fremont | 12 | 7.7 | 7.1 | 9 | 8.9 | 8.8 |
| Huerfano | 3 | 1.8 | 11.5 | 1 | 1.1 | 5.2 |
| Kiowa | 0 | 0.0 | 0.0 | 0 | 0.0 | 0.0 |
| Las Animas | 12 | 13.2 | 9.9 | 6 | 10.2 | 12.8 |
| Mineral | 0 | 0.0 | 0.0 | 0 | 0.0 | 0.0 |
| Otero | 4 | 6.5 | 14.2 | 9 | 6.3 | 15.3 |
| Park | 2 | 1.5 | 6.1 | 5 | 3.1 | 0.0 |
| Prowers | 10 | 8.0 | 10.3 | 7 | 6.7 | 7.5 |
| Pueblo | 33 | 28.9 | 9.1 | 29 | 25.1 | 9.6 |
| Rio Grande | 8 | 10.0 | 18.2 | 0 | 4.6 | 12.0 |
| Saguache | 1 | 2.0 | 0.0 | 5 | 1.9 | 11.4 |
| Teller | 2 | 4.7 | 16.4 | 5 | 3.2 | 14.6 |
| Other States/ Countries | 5 | 4.6 | 0.0 | 6 | 5.5 | 7.8 |
| TOTALS | 185 | 195.1 | 13.0 | 199 | 209.7 | 12.8 |

**SOUTHERN REGION
FY 1996-97 AND FY 1997-98
DETAINED YOUTH¹**

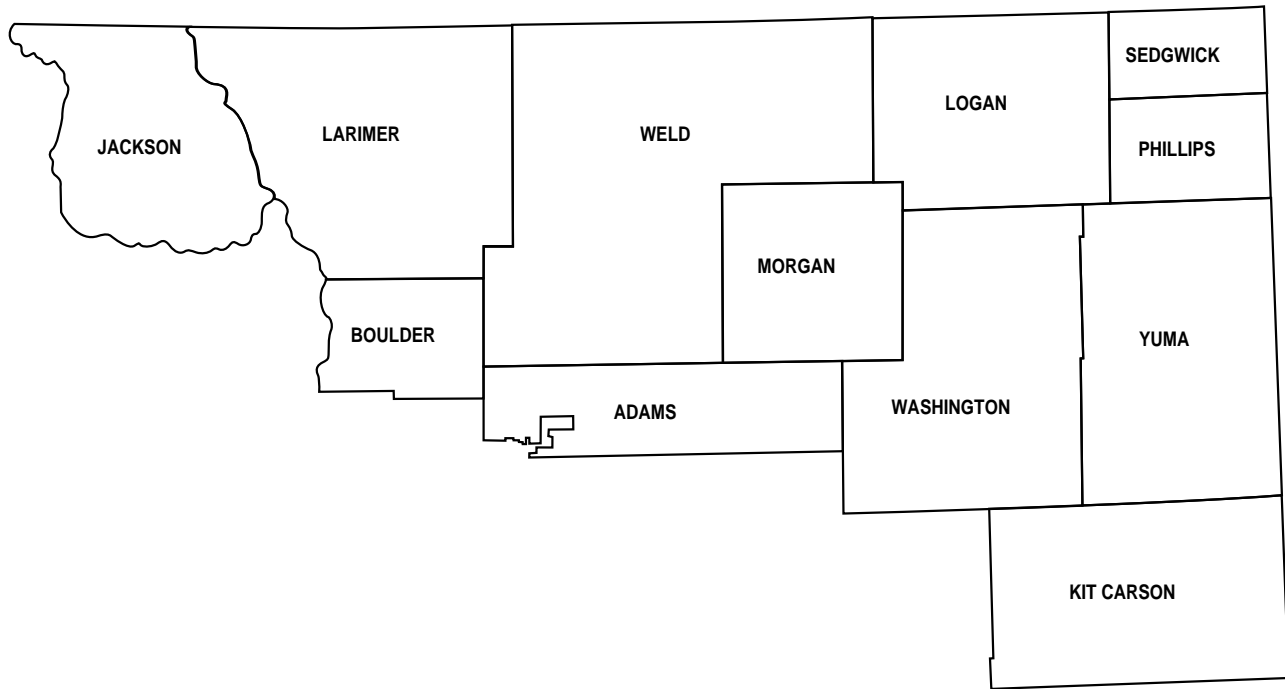
| POPULATION DATA | FY 1996-97 | | FY 1997-98 | | DEMOGRAPHIC DATA | | | |
|--|------------|------|------------|------|------------------|------|------------|------|
| | n | % | n | % | FY 1996-97 | | FY 1997-98 | |
| | | | | | n | % | n | % |
| Number of Intakes: | 3,575 | | 4,083 | | | | | |
| Number of Admissions: | 3,547 | | 4,075 | | | | | |
| Average Daily Population: | 119.2 | | 146.6 | | | | | |
| Average LOS (days): | 12.1 | | 12.5 | | | | | |
| DETENTION DATA | | | | | | | | |
| Charge | | | | | | | | |
| CHINO: | 4 | 0% | 8 | 0% | | | | |
| Court Order: | 1,571 | 44% | 1,896 | 47% | | | | |
| Courtesy: | 345 | 10% | 354 | 9% | | | | |
| Delinquent: | 1,029 | 29% | 1,167 | 29% | | | | |
| Depend-Neg.: | 12 | 0% | 10 | 0% | | | | |
| Game-Fish: | 1 | 0% | 3 | 0% | | | | |
| Interrupted: | 191 | 5% | 184 | 5% | | | | |
| Park-Municipal: | 246 | 7% | 289 | 7% | | | | |
| Runaway: | 35 | 1% | 29 | 1% | | | | |
| Traffic: | 113 | 3% | 135 | 3% | | | | |
| TOTAL | 3,547 | 100% | 4,075 | 100% | | | | |
| Reason Held | | | | | | | | |
| Court: | 1,741 | 49% | 1,890 | 46% | | | | |
| DYC: | 332 | 9% | 371 | 9% | | | | |
| Parole: | 28 | 1% | 37 | 1% | | | | |
| Police: | 932 | 26% | 1,209 | 30% | | | | |
| Probation: | 421 | 12% | 489 | 12% | | | | |
| Situational: | 32 | 1% | 36 | 1% | | | | |
| Social Service: | 61 | 2% | 43 | 1% | | | | |
| TOTAL | 3,547 | 100% | 4,075 | 100% | | | | |
| Legal Status | | | | | | | | |
| Preadjudicated: | 2,530 | 71% | 2,778 | 68% | | | | |
| 703 Sentences: | 32 | 1% | 55 | 1% | | | | |
| Boot Camp Sentences: | 166 | 5% | 185 | 5% | | | | |
| Contempt Sentences: | 38 | 1% | 22 | 1% | | | | |
| Game-Fish Sentences: | 0 | 0% | 0 | 0% | | | | |
| Handgun Sentences: | 18 | 1% | 4 | 0% | | | | |
| Municipal Sentences: | 128 | 4% | 121 | 3% | | | | |
| Probation Sentences: | 230 | 6% | 274 | 7% | | | | |
| Traffic Sentences: | 11 | 0% | 13 | 0% | | | | |
| Return Commitment: | 394 | 11% | 623 | 15% | | | | |
| TOTAL: | 3,547 | 100% | 4,075 | 100% | | | | |
| Age at Admission | | | | | | | | |
| 10 Years | | | | | 3 | 0% | 7 | 0% |
| 11 Years | | | | | 16 | 0% | 24 | 1% |
| 12 Years | | | | | 79 | 2% | 80 | 2% |
| 13 Years | | | | | 247 | 7% | 259 | 6% |
| 14 Years | | | | | 488 | 14% | 628 | 15% |
| 15 Years | | | | | 758 | 21% | 832 | 20% |
| 16 Years | | | | | 956 | 27% | 1,036 | 25% |
| 17 Years | | | | | 954 | 27% | 1,144 | 28% |
| 18 Years | | | | | 37 | 1% | 59 | 1% |
| 19 Years | | | | | 8 | 0% | 6 | 0% |
| 20 Years | | | | | 1 | 0% | 0 | 0% |
| Over 20 Years | | | | | 0 | 0% | 0 | 0% |
| TOTAL: | | | | | 3,547 | 100% | 4,075 | 100% |
| Average Age at Admission²: | | | | | 16.0 Yrs. | | 16.0 Yrs. | |

¹Detention Data and demographic data are based on number of admissions. A youth may be admitted more than once during the year. Figures include youth from other states/countries admitted to DYC-operated detention centers in this region.

²Average age at detention admission has been recalculated for the past three years and are slightly higher than figures reported in previous manuals. In prior years these calculations were based on discrete (e.g., 16 years) values for age and are now based on continuous (e.g., 16.487) values.

**SOUTHERN REGION
POPULATION DATA ON DETAINED YOUTH
BY COUNTY**

| County of Offense | FY 1996-97 | | | FY 1997-98 | | |
|----------------------------|--------------|--------------|---------------|--------------|--------------|---------------|
| | Admissions | ADP | LOS (Days) | Admissions | ADP | LOS (Days) |
| Alamosa | 129 | 4.7 | 12.0 | 140 | 6.2 | 14.5 |
| Baca | 2 | 0.3 | 60.9 | 1 | 0.0 | 15.0 |
| Bent | 14 | 0.7 | 17.8 | 12 | 0.4 | 11.0 |
| Chaffee | 33 | 1.1 | 13.9 | 62 | 2.3 | 9.1 |
| Cheyenne | 0 | 0.0 | 0.0 | 1 | 0.0 | 9.9 |
| Conejos | 26 | 0.9 | 12.8 | 21 | 1.0 | 11.7 |
| Costilla | 8 | 0.3 | 36.6 | 12 | 0.5 | 15.1 |
| Crowley | 8 | 1.1 | 42.1 | 15 | 0.5 | 13.0 |
| Custer | 7 | 0.3 | 19.7 | 10 | 0.3 | 9.1 |
| El Paso | 1,736 | 51.9 | 10.9 | 2,116 | 66.5 | 11.2 |
| Fremont | 181 | 8.8 | 18.2 | 208 | 6.6 | 10.8 |
| Huerfano | 36 | 2.6 | 26.1 | 20 | 1.4 | 24.9 |
| Kiowa | 0 | 0.0 | 0.0 | 0 | 0.0 | 0.0 |
| Las Animas | 55 | 3.6 | 23.8 | 62 | 2.5 | 14.5 |
| Mineral | 1 | 0.0 | 2.8 | 0 | 0.0 | 0.0 |
| Otero | 73 | 4.9 | 24.3 | 106 | 5.2 | 18.2 |
| Park | 29 | 1.1 | 11.9 | 45 | 2.2 | 17.3 |
| Prowers | 81 | 7.8 | 33.4 | 65 | 7.3 | 37.8 |
| Pueblo | 962 | 23.0 | 8.0 | 1,002 | 36.7 | 12.6 |
| Rio Grande | 73 | 3.2 | 13.5 | 45 | 3.2 | 19.4 |
| Saguache | 18 | 1.7 | 26.8 | 26 | 1.3 | 18.5 |
| Teller | 50 | 0.9 | 6.6 | 75 | 2.1 | 9.7 |
| Other States/ Countries | 25 | 0.3 | 5.0 | 31 | 0.4 | 5.2 |
| TOTALS | 3,547 | 119.2 | 12.1 | 4,075 | 146.6 | 12.5 |



NORTHEAST REGION

**NORTHEAST REGION
FY 1996-97 AND FY 1997-98
COMMITTED YOUTH**

| POPULATION DATA | FY 1996-97 | | FY 1997-98 | | DEMOGRAPHIC DATA ¹ | FY 1996-97 | | FY 1997-98 | |
|--------------------------------------|------------|----------|------------|----------|--|-------------------|------|-------------------|------|
| | n | % | n | % | | n | % | n | % |
| Number of New Commitments: | 168 | | 157 | | Sex | | | | |
| Average Daily Population Assessment: | 15.3 | | 12.7 | | Male: | 157 | 93% | 134 | 85% |
| Orientation: | 13.9 | | 17.1 | | Female: | 11 | 7% | 23 | 15% |
| Intensive Secure: | 85.8 | | 115.2 | | TOTAL | 168 | 100% | 157 | 100% |
| Medium Care: | 47.4 | | 53.2 | | Ethnicity | | | | |
| Community Residential: | 30.1 | | 30.0 | | Anglo-American: | 87 | 52% | 90 | 57% |
| TOTAL | 192.5 | | 228.2 | | African-American: | 9 | 5% | 5 | 3% |
| Average LOS (months) | | | | | Hispanic/Latino: | 66 | 39% | 58 | 37% |
| Intensive Secure: | 12.0 | | 13.2 | | Native-American: | 1 | 1% | 1 | 1% |
| Medium Secure: | 4.7 | | 6.0 | | Asian-American: | 1 | 1% | 3 | 2% |
| Community Residential: | 5.5 | | 5.0 | | Other: | 4 | 2% | 0 | 0% |
| Total Residential: | 15.1 | | 15.8 | | TOTAL | 168 | 100% | 157 | 100% |
| Total Commitment: | 22.2 | | 22.9 | | Age at Commitment: | | | | |
| | | | | | 12 Years | 0 | 0% | 0 | 0% |
| COMMITMENT DATA | n | % | n | % | 13 Years | 7 | 4% | 6 | 4% |
| Type of Commitment ¹ | | | | | 14 Years | 13 | 8% | 14 | 9% |
| Non-Mandatory: | 81 | 48% | 80 | 51% | 15 Years | 36 | 21% | 39 | 25% |
| Mandatory: | 78 | 46% | 59 | 38% | 16 Years | 45 | 27% | 38 | 24% |
| Repeat: | 7 | 4% | 12 | 8% | 17 Years | 51 | 30% | 49 | 31% |
| Violent: | 1 | 1% | 4 | 3% | 18 Years | 14 | 8% | 9 | 6% |
| Aggravated Juvenile: | 1 | 1% | 2 | 1% | 19 Years | 2 | 1% | 2 | 1% |
| Adult: | 0 | 0% | 0 | 0% | 20 Years | 0 | 0% | 0 | 0% |
| TOTAL | 168 | 100% | 157 | 100% | 21 Years | 0 | 0% | 0 | 0% |
| Breakdown of Sentences | | | | | TOTAL | 168 | 100% | 157 | 100% |
| New Commitments: | 168 | 86% | 157 | 84% | Average Age at Commitment ² : | 16.5 Yrs. | | 16.5 Yrs. | |
| Concurrent: | 24 | 12% | 30 | 16% | PAROLE DATA | FY 1996-97 | | FY 1997-98 | |
| Consecutive: | 4 | 2% | 1 | 1% | No. Youth Served on Parole: | 68 | | 115 | |
| TOTAL | 196 | 100% | 188 | 100% | Average Daily Population ³ : | 29.8 | | 45.9 | |
| New Commitment Classification | | | | | No. Youth Discharged from Parole: | 47 | | 60 | |
| Cell 1 | 0 | 0% | 0 | 0% | Average LOS on Parole (mos.): | 7.6 | | 6.4 | |
| Cell 2 | 0 | 0% | 1 | 1% | Cell 11 | 0 | 0% | 1 | 1% |
| Cell 3 | 3 | 2% | 1 | 1% | Cell 12 | 16 | 10% | 12 | 8% |
| Cell 4 | 5 | 3% | 5 | 3% | Cell 13 | 41 | 24% | 28 | 18% |
| Cell 5 | 1 | 1% | 0 | 0% | Cell 14 | 26 | 15% | 26 | 17% |
| Cell 6 | 0 | 0% | 0 | 0% | Cell 15 | 0 | 0% | 0 | 0% |
| Cell 7 | 0 | 0% | 2 | 1% | Cell 16 | 5 | 3% | 7 | 4% |
| Cell 8 | 6 | 4% | 6 | 4% | Cell 17 | 22 | 13% | 20 | 13% |
| Cell 9 | 12 | 7% | 16 | 10% | Cell 18 | 16 | 10% | 18 | 11% |
| Cell 10 | 15 | 9% | 14 | 9% | Cell 19 ⁴ | 0 | - | 0 | - |
| | | | | | Cell 20 ⁴ | 0 | - | 0 | - |
| | | | | | Cell Not Available | 0 | 0% | 0 | 0% |

¹Data are based on NEW commitments.

²Average ages at commitment for the two years shown above have been recalculated and are slightly higher than previously reported. In prior years, these calculations were based on discrete values (e.g., 16 years) for age and are now based on continuous values (e.g., 16.487 years).

³Average daily population is the average number of active youth on parole during the time period. Youth on parole who were on escape status during the time period are not included.

⁴Scoring of the new classification grid does not allow youth to fall into this cell.

**NORTHEAST REGION
POPULATION DATA ON COMMITTED YOUTH
BY COUNTY OF RESIDENCE**

| County | FY 1996-97 | | | FY 1997-98 | | |
|----------------------------|----------------|--------------|-----------------------|----------------|--------------|-----------------------|
| | New Commits | Res. ADP | Res. LOS (mos.) | New Commits | Res. ADP | Res. LOS (mos.) |
| Adams | 58 | 63.8 | 15.0 | 47 | 75.8 | 17.8 |
| Boulder | 16 | 22.6 | 13.1 | 33 | 33.9 | 13.8 |
| Jackson | 0 | 0.0 | 0.0 | 1 | 0.2 | 0.0 |
| Kit Carson | 0 | 0.0 | 0.0 | 0 | 0.0 | 0.0 |
| Larimer | 45 | 52.3 | 16.1 | 37 | 51.3 | 14.9 |
| Logan | 2 | 1.1 | 8.0 | 1 | 2.0 | 0.0 |
| Morgan | 5 | 9.1 | 17.3 | 6 | 9.9 | 15.7 |
| Phillips | 0 | 0.7 | 17.6 | 0 | 0.5 | 0.0 |
| Sedgwick | 0 | 0.0 | 0.0 | 0 | 0.0 | 0.0 |
| Washington | 1 | 0.1 | 0.0 | 0 | 0.8 | 0.0 |
| Weld | 38 | 41.5 | 15.8 | 32 | 51.9 | 15.6 |
| Yuma | 1 | 0.2 | 0.0 | 0 | 0.4 | 7.1 |
| Other States/ Countries | 2 | 1.3 | 8.3 | 0 | 1.5 | 15.6 |
| TOTALS | 168 | 192.5 | 15.1 | 157 | 228.2 | 15.8 |

**NORTHEAST REGION
FY 1996-97 AND FY 1997-98
DETAINED YOUTH¹**

| POPULATION DATA | FY 1996-97 | | FY 1997-98 | | DEMOGRAPHIC DATA | FY 1996-97 | | FY 1997-98 | |
|---|--------------|-------------|--------------|-------------|---|--------------|-------------|--------------|-------------|
| | n | % | n | % | | n | % | n | % |
| Number of Intakes: | 1,823 | | 2,936 | | | | | | |
| Number of Admissions ² : | 1,792 | | 2,906 | | Sex | | | | |
| Average Daily Population ² : | 69.7 | | 110.9 | | Male: | 1,482 | 83% | 2,326 | 80% |
| Average LOS (days): | 14.4 | | 14.2 | | Female: | 310 | 17% | 580 | 20% |
| DETENTION DATA | n | % | n | % | TOTAL: | 1,792 | 100% | 2,906 | 100% |
| Charge | | | | | Ethnicity | | | | |
| CHINO: | 0 | 0% | 1 | 0% | Anglo-American: | 867 | 48% | 1,573 | 54% |
| Court Order: | 790 | 44% | 1,463 | 50% | African-American: | 149 | 8% | 181 | 6% |
| Courtesy: | 290 | 16% | 226 | 8% | Hispanic/Latino: | 743 | 41% | 1,069 | 37% |
| Delinquent: | 525 | 29% | 804 | 28% | Native-American: | 11 | 1% | 19 | 1% |
| Depend-Neg.: | 4 | 0% | 9 | 0% | Asian-American: | 8 | 0% | 41 | 1% |
| Game-Fish: | 0 | 0% | 1 | 0% | Other: | 14 | 1% | 23 | 1% |
| Interrupted: | 81 | 5% | 304 | 10% | TOTAL: | 1,792 | 100% | 2,906 | 100% |
| Park-Municipal: | 21 | 1% | 48 | 2% | | | | | |
| Runaway: | 54 | 3% | 31 | 1% | | | | | |
| Traffic: | 27 | 2% | 19 | 1% | | | | | |
| TOTAL | 1,792 | 100% | 2,906 | 100% | Age at Admission | | | | |
| Reason Held | | | | | 10 Years | 2 | 0% | 6 | 0% |
| Court: | 760 | 42% | 1,469 | 51% | 11 Years | 4 | 0% | 9 | 0% |
| DYC: | 307 | 17% | 232 | 8% | 12 Years | 18 | 1% | 50 | 2% |
| Parole: | 9 | 1% | 17 | 1% | 13 Years | 96 | 5% | 154 | 5% |
| Police: | 443 | 25% | 729 | 25% | 14 Years | 223 | 12% | 440 | 15% |
| Probation: | 231 | 13% | 406 | 14% | 15 Years | 378 | 21% | 598 | 21% |
| Situational: | 23 | 1% | 29 | 1% | 16 Years | 494 | 28% | 716 | 25% |
| Social Service: | 19 | 1% | 24 | 1% | 17 Years | 507 | 28% | 878 | 30% |
| TOTAL | 1,792 | 100% | 2,906 | 100% | 18 Years | 60 | 3% | 47 | 2% |
| Legal Status | | | | | 19 Years | 10 | 1% | 7 | 0% |
| Preadjudicated: | 1,325 | 74% | 2,083 | 72% | 20 Years | 0 | 0% | 1 | 0% |
| 703 Sentences: | 2 | 0% | 7 | 0% | Over 20 Years | 0 | 0% | 0 | 0% |
| Boot Camp Sentences: | 39 | 2% | 82 | 3% | TOTAL: | 1,792 | 100% | 2,906 | 100% |
| Contempt Sentences: | 10 | 1% | 9 | 0% | Average Age at Admission ³ : | 16.2 Yrs. | | 16.1 Yrs. | |
| Game-Fish Sentences: | 0 | 0% | 0 | 0% | | | | | |
| Handgun Sentences: | 1 | 0% | 4 | 0% | | | | | |
| Municipal Sentences: | 5 | 0% | 39 | 1% | | | | | |
| Probation Sentences: | 88 | 5% | 334 | 11% | | | | | |
| Traffic Sentences: | 10 | 1% | 3 | 0% | | | | | |
| Return Commitment: | 312 | 17% | 345 | 12% | | | | | |
| TOTAL: | 1,792 | 100% | 2,906 | 100% | | | | | |

¹Detention Data and demographic data are based on number of admissions. A youth may be admitted more than once during the year. Figures include youth from other states/countries admitted to DYC-operated detention centers in this region.

²Boulder County detained youth were transferred from Central DYC Management Region jurisdiction in FY1997-98 resulting in increased admissions and average daily population in the Northeast Region.

³Average age at detention admission has been recalculated for the past three years and are slightly higher than figures reported in previous manuals. In prior years these calculations were based on discrete (e.g., 16 years) values for age and are now based on continuous (e.g., 16.487) values.

**NORTHEAST REGION
POPULATION DATA ON DETAINED YOUTH
BY COUNTY**

| County of Offense | FY 1996-97 | | | FY 1997-98 | | |
|----------------------|--------------|-------------|---------------|--------------|--------------|---------------|
| | Admisssions | ADP | LOS (Days) | Admisssions | ADP | LOS (Days) |
| Adams | 875 | 29.0 | 12.3 | 882 | 34.2 | 14.7 |
| Boulder ¹ | NA | NA | NA | 873 | 26.9 | 11.6 |
| Jackson | 0 | 0.0 | 0.0 | 2 | 0.4 | 70.9 |
| Kit Carson | 9 | 0.4 | 15.1 | 10 | 0.6 | 20.0 |
| Larimer | 367 | 15.8 | 16.4 | 456 | 19.2 | 15.7 |
| Logan | 24 | 1.7 | 23.4 | 56 | 4.1 | 22.6 |
| Morgan | 64 | 4.3 | 23.3 | 65 | 4.4 | 26.4 |
| Phillips | 1 | 0.0 | 10.0 | 0 | 0.0 | 0.0 |
| Sedgwick | 0 | 0.0 | 0.0 | 0 | 0.0 | 0.0 |
| Washington | 5 | 0.2 | 11.4 | 4 | 0.3 | 32.9 |
| Weld | 429 | 17.3 | 14.8 | 531 | 19.6 | 13.8 |
| Yuma | 8 | 0.5 | 21.5 | 10 | 0.9 | 31.2 |
| Other States/Cou | 10 | 0.6 | 20.9 | 17 | 0.2 | 4.3 |
| TOTALS | 1,792 | 69.7 | 14.4 | 2,906 | 110.9 | 14.2 |

¹Boulder County detention admissions came under Northeastern DYC Management Region jurisdiction in FY1997-98.



WESTERN REGION

**WESTERN REGION
FY 1996-97 AND FY 1997-98
COMMITTED YOUTH**

| POPULATION DATA | FY 1996-97 | | FY 1997-98 | | DEMOGRAPHIC DATA ¹ | FY 1996-97 | | FY 1997-98 | |
|---------------------------------|------------|------|------------|------|--|------------|------------|------------|------|
| | n | % | n | % | | n | % | n | % |
| Number of New Commitments: | 121 | | 110 | | Sex | | | | |
| ADP | | | | | Male: | 106 | 88% | 96 | 87% |
| Assessment: | 8.8 | | 9.9 | | Female: | 15 | 12% | 14 | 13% |
| Orientation | 0.1 | | 0.0 | | TOTAL | 121 | 100% | 110 | 100% |
| Intensive Secure: | 32.6 | | 39.0 | | Ethnicity | | | | |
| Medium Care: | 46.9 | | 44.3 | | Anglo-American: | 75 | 62% | 78 | 71% |
| Community Residential: | 20.8 | | 30.3 | | African-American: | 2 | 2% | 7 | 6% |
| TOTAL | 109.3 | | 123.5 | | Hispanic/Latino: | 42 | 35% | 21 | 19% |
| Average LOS (mos.) | | | | | Native-American: | 2 | 2% | 3 | 3% |
| Intensive Secure: | 3.2 | | 5.3 | | Asian-American: | 0 | 0% | 1 | 1% |
| Medium Secure: | 4.8 | | 5.7 | | Other: | 0 | 0% | 0 | 0% |
| Community Residential: | 4.0 | | 4.9 | | TOTAL | 121 | 100% | 110 | 100% |
| Total Residential: | 10.3 | | 13.0 | | Age at Commitment: | | | | |
| Total Commitment: | 16.5 | | 18.2 | | 12 Years | 4 | 3% | 0 | 0% |
| COMMITMENT DATA | n | % | n | % | 13 Years | 5 | 4% | 2 | 2% |
| Type of Commitment ¹ | | | | | 14 Years | 14 | 12% | 8 | 7% |
| Non-Mandatory: | 80 | 66% | 72 | 65% | 15 Years | 23 | 19% | 17 | 15% |
| Mandatory: | 22 | 18% | 29 | 26% | 16 Years | 35 | 29% | 26 | 24% |
| Repeat: | 13 | 11% | 8 | 7% | 17 Years | 37 | 31% | 54 | 49% |
| Violent: | 3 | 2% | 0 | 0% | 18 Years | 2 | 2% | 3 | 3% |
| Aggravated Juvenile: | 3 | 2% | 1 | 1% | 19 Years | 0 | 0% | 0 | 0% |
| Adult: | 0 | 0% | 0 | 0% | 20 Years | 1 | 1% | 0 | 0% |
| TOTAL | 121 | 100% | 110 | 100% | 21 Years | 0 | 0% | 0 | 0% |
| | | | | | TOTAL | 121 | 100% | 110 | 100% |
| Breakdown of Sentences | | | | | Average Age at Commitment ² : | 16.2 Yrs. | | 16.7 Yrs. | |
| New Commitments: | 121 | 87% | 110 | 88% | PAROLE DATA | FY 1996-97 | FY 1997-98 | | |
| Concurrent: | 16 | 12% | 9 | 7% | No. Youth Served on Parole: | 88 | 99 | | |
| Consecutive: | 2 | 1% | 6 | 5% | Average Daily Population ³ : | 30.8 | 37.3 | | |
| TOTAL | 139 | 100% | 125 | 100% | No. youth Discharged from Parole: | 53 | 61 | | |
| New Commitment Classification | | | | | Average LOS on Parole (mos.): | 7.2 | 6.3 | | |
| Cell 1 | 0 | 0% | 0 | 0% | Cell 11 | 6 | 5% | 1 | 1% |
| Cell 2 | 7 | 6% | 3 | 3% | Cell 12 | 16 | 13% | 24 | 22% |
| Cell 3 | 6 | 5% | 3 | 3% | Cell 13 | 18 | 15% | 17 | 15% |
| Cell 4 | 4 | 3% | 1 | 1% | Cell 14 | 10 | 8% | 8 | 7% |
| Cell 5 | 1 | 1% | 0 | 0% | Cell 15 | 0 | 0% | 0 | 0% |
| Cell 6 | 0 | 0% | 0 | 0% | Cell 16 | 6 | 5% | 9 | 8% |
| Cell 7 | 5 | 4% | 3 | 3% | Cell 17 | 13 | 11% | 12 | 11% |
| Cell 8 | 11 | 9% | 11 | 10% | Cell 18 | 4 | 3% | 5 | 5% |
| Cell 9 | 9 | 7% | 9 | 8% | Cell 19 ⁴ | 0 | - | 0 | - |
| Cell 10 | 5 | 4% | 3 | 3% | Cell 20 ⁴ | 0 | - | 0 | - |
| | | | | | Cell Not Available | 0 | | 1 | |

¹Data are based on NEW commitments.

²Average ages at commitment for the two years shown above have been recalculated and are slightly higher than previously reported. In prior years, these calculations were based on discrete values (e.g., 16 years) for age and are now based on continuous values (e.g., 16.487 years).

³Average daily population is the average number of active youth on parole during the time period. Youth on parole who were on escape status during the time period are not included.

⁴Scoring of the new classification grid does not allow youth to fall into this cell.

**WESTERN REGION
POPULATION DATA ON COMMITTED YOUTH
BY COUNTY OF RESIDENCE**

| County | FY 1996-97 | | | FY 1997-98 | | |
|----------------------------|----------------|--------------|-----------------------|----------------|--------------|-----------------------|
| | New Commits | Res. ADP | Res. LOS (mos.) | New Commits | Res. ADP | Res. LOS (mos.) |
| Archuleta | 0 | 0.0 | 0.0 | 1 | 0.2 | 0.0 |
| Delta | 12 | 8.7 | 13.0 | 5 | 11.4 | 11.8 |
| Dolores | 1 | 0.9 | 24.0 | 1 | 1.7 | 0.0 |
| Garfield | 16 | 15.0 | 9.1 | 19 | 17.4 | 14.3 |
| Grand | 0 | 0.0 | 0.0 | 1 | 0.4 | 0.0 |
| Gunnison | 2 | 1.4 | 3.7 | 2 | 1.4 | 7.7 |
| Hinsdale | 0 | 0.0 | 0.0 | 0 | 0.0 | 0.0 |
| La Plata | 5 | 6.9 | 14.0 | 7 | 6.5 | 14.2 |
| Mesa | 50 | 46.7 | 9.6 | 54 | 54.4 | 15.2 |
| Moffat | 4 | 4.7 | 12.0 | 6 | 3.6 | 8.9 |
| Montezuma | 6 | 4.6 | 14.6 | 2 | 3.8 | 10.1 |
| Montrose | 15 | 11.5 | 8.9 | 7 | 13.4 | 15.0 |
| Ouray | 3 | 3.4 | 18.6 | 0 | 2.6 | 5.5 |
| Pitkin | 1 | 0.7 | 0.0 | 0 | 1.0 | 12.3 |
| Rio Blanco | 0 | 0.8 | 9.9 | 0 | 0.2 | 12.5 |
| Routt | 0 | 1.7 | 0.0 | 1 | 1.1 | 13.3 |
| San Juan | 0 | 0.0 | 0.0 | 0 | 0.0 | 0.0 |
| San Miguel | 1 | 0.2 | 0.0 | 1 | 1.5 | 0.0 |
| Other States/ Countries | 5 | 2.3 | 14.2 | 3 | 3.0 | 6.5 |
| TOTALS | 121 | 109.3 | 10.3 | 110 | 123.5 | 13.0 |

**WESTERN REGION
FY 1996-97 AND FY 1997-98
DETAINED YOUTH¹**

| POPULATION DATA | FY 1996-97 | | FY 1997-98 | | DEMOGRAPHIC DATA | FY 1996-97 | | FY 1997-98 | |
|---------------------------|------------|----------|------------|----------|---|------------|------|------------|------|
| | n | % | n | % | | n | % | n | % |
| Number of Intakes: | 962 | | 999 | | | | | | |
| Number of Admissions: | 950 | | 994 | | | | | | |
| Average Daily Population: | 52.0 | | 52.0 | | | | | | |
| Average LOS (days): | 19.7 | | 19.3 | | | | | | |
| | | | | | Sex | | | | |
| | | | | | Male: | 795 | 84% | 850 | 86% |
| | | | | | Female: | 155 | 16% | 144 | 14% |
| | | | | | TOTAL: | 950 | 100% | 994 | 100% |
| DETENTION DATA | n | % | n | % | | | | | |
| Charge | | | | | | | | | |
| CHINO: | 0 | 0% | 0 | 0% | Ethnicity | | | | |
| Court Order: | 539 | 57% | 648 | 65% | Anglo-American: | 640 | 67% | 723 | 73% |
| Courtesy: | 21 | 2% | 24 | 2% | African-American: | 27 | 3% | 17 | 2% |
| Delinquent: | 308 | 32% | 300 | 30% | Hispanic/Latino: | 246 | 26% | 224 | 23% |
| Depend-Neg.: | 0 | 0% | 0 | 0% | Native-American: | 33 | 3% | 27 | 3% |
| Game-Fish: | 0 | 0% | 0 | 0% | Asian-American: | 2 | 0% | 2 | 0% |
| Interrupted: | 40 | 4% | 11 | 1% | Other: | 2 | 0% | 1 | 0% |
| Park-Municipal: | 14 | 1% | 3 | 0% | TOTAL: | 950 | 100% | 994 | 100% |
| Runaway: | 6 | 1% | 1 | 0% | | | | | |
| Traffic: | 22 | 2% | 7 | 1% | Age at Admission | | | | |
| TOTAL | 950 | 100% | 994 | 100% | 10 Years | 1 | 0% | 5 | 1% |
| Reason Held | | | | | 11 Years | 4 | 0% | 4 | 0% |
| Court: | 533 | 56% | 554 | 56% | 12 Years | 18 | 2% | 8 | 1% |
| DYC: | 16 | 2% | 14 | 1% | 13 Years | 43 | 5% | 42 | 4% |
| Parole: | 7 | 1% | 13 | 1% | 14 Years | 119 | 13% | 100 | 10% |
| Police: | 246 | 26% | 246 | 25% | 15 Years | 211 | 22% | 192 | 19% |
| Probation: | 133 | 14% | 161 | 16% | 16 Years | 254 | 27% | 317 | 32% |
| Situational: | 14 | 1% | 5 | 1% | 17 Years | 289 | 30% | 312 | 31% |
| Social Service: | 1 | 0% | 1 | 0% | 18 Years | 11 | 1% | 12 | 1% |
| TOTAL | 950 | 100% | 994 | 100% | 19 Years | 0 | 0% | 2 | 0% |
| | | | | | 20 Years | 0 | 0% | 0 | 0% |
| | | | | | Over 20 Years | 0 | 0% | 0 | 0% |
| | | | | | TOTAL: | 950 | 100% | 994 | 100% |
| Legal Status | | | | | | | | | |
| Preadjudicated: | 712 | 75% | 709 | 71% | | | | | |
| 703 Sentences: | 3 | 0% | 0 | 0% | | | | | |
| Boot Camp Sentences: | 84 | 9% | 82 | 8% | Average Age at Admission ² : | 16.1 Yrs. | | 16.3 Yrs. | |
| Contempt Sentences: | 2 | 0% | 2 | 0% | | | | | |
| Game-Fish Sentences: | 0 | 0% | 0 | 0% | | | | | |
| Handgun Sentences: | 0 | 0% | 0 | 0% | | | | | |
| Municipal Sentences: | 10 | 1% | 0 | 0% | | | | | |
| Probation Sentences: | 108 | 11% | 130 | 13% | | | | | |
| Traffic Sentences: | 12 | 1% | 1 | 0% | | | | | |
| Return Commitment: | 19 | 2% | 70 | 7% | | | | | |
| TOTAL: | 950 | 100% | 994 | 100% | | | | | |

¹Detention Data and demographic data are based on number of admissions. A youth may be admitted more than once during the year. Figures include youth from other states/countries admitted to DYC-operated detention centers in this region.

²Average age at detention admission has been recalculated for the past three years and are slightly higher than figures reported in previous manuals. In prior years these calculations were based on discrete (e.g., 16 years) values for age and are now based on continuous (e.g., 16.487) values.

**WESTERN REGION
POPULATION DATA ON DETAINED YOUTH
BY COUNTY**

| County of Offense | FY 1996-97 | | | FY 1997-98 | | |
|----------------------------|------------|-------------|---------------|------------|-------------|---------------|
| | Admissions | ADP | LOS (Days) | Admissions | ADP | LOS (Days) |
| Archuleta | 6 | 0.1 | 6.6 | 17 | 1.4 | 29.5 |
| Delta | 45 | 2.5 | 21.1 | 24 | 1.0 | 14.0 |
| Dolores | 3 | 0.3 | 36.2 | 3 | 0.1 | 13.3 |
| Garfield | 144 | 7.1 | 17.9 | 122 | 7.6 | 20.9 |
| Grand | 14 | 1.1 | 23.4 | 9 | 0.9 | 38.5 |
| Gunnison | 8 | 0.8 | 35.1 | 10 | 0.6 | 22.9 |
| Hinsdale | 2 | 0.0 | 2.2 | 0 | 0.0 | 0.0 |
| La Plata | 58 | 3.8 | 24.7 | 113 | 5.3 | 18.0 |
| Mesa | 441 | 21.8 | 18.1 | 477 | 22.4 | 17.1 |
| Moffat | 38 | 2.8 | 26.0 | 57 | 3.5 | 23.3 |
| Montezuma | 59 | 2.3 | 14.4 | 32 | 1.0 | 12.3 |
| Montrose | 56 | 4.4 | 28.4 | 51 | 3.9 | 28.8 |
| Ouray | 8 | 1.1 | 41.4 | 1 | 0.1 | 67.1 |
| Pitkin | 15 | 1.1 | 27.5 | 18 | 0.6 | 9.0 |
| Rio Blanco | 8 | 0.6 | 27.3 | 4 | 0.2 | 24.0 |
| Routt | 20 | 1.7 | 20.9 | 44 | 2.9 | 27.9 |
| San Juan | 1 | 0.0 | 18.2 | 0 | 0.0 | 0.0 |
| San Miguel | 9 | 0.5 | 19.7 | 6 | 0.5 | 27.3 |
| Other States/ Countries | 15 | 0.1 | 3.4 | 6 | 0.0 | 3.8 |
| TOTALS | 950 | 52.0 | 19.7 | 994 | 52.0 | 19.3 |