

Colorado Child Support Enforcement

Annual Report 2012



<https://childsupport.state.co.us>

Annual Report Table of Contents

2012 Program Performance Quick Facts.....	3
2012 Child Support Highlights.....	4
Six Innovative Strategies.....	5
Where Colorado Ranks	6
Important Colorado Statistics.....	7

2012 Program Performance — QUICK FACTS

Collections

Total Collections	\$328,553,523
Non TANF Collections	\$306,665,805
TANF Collections	\$21,887,717

Collections Sources

Income Assignments	\$187,033,494
Federal Tax Refund Intercepts	\$23,403,917
State Tax Refund Intercepts	\$3,143,344
Collections from other states	\$28,956,043
Workers Compensation Benefits	\$2,288,258
Unemployment Compensation	\$12,251,604
Financial Institution Data Match	\$1,136,353
Other (Gambling Intercepts, Lottery Intercepts, Credit Reporting, License Suspension, Voluntary Payments, etc.)	\$70,340,510

Cases

Total Caseload	152,635
Current TANF Caseload	14,755
Former TANF Caseload	22,427
Never TANF Caseload	115,453

Service Performance

Paternity Establishment Percentage	107.8%
Percent of Caseload with Orders	86.9%
Percent of Cases Paying on Arrears	69.9%
Percent of Current Support Paid	62.8%
Cost Effectiveness Ratio	\$4.38

Over \$306 million dollars was paid to families in child support in 2012.

This is an increase of about \$5 million dollars over 2011.

The caseload increased by over 4,000, giving the Program the opportunity to serve more families in 2012.

For every dollar the Program spends, it collects \$4.38 in return. The Federal Office of Budget and Management considers Child Support Services to be one of the best performing social services programs.



2012 CHILD SUPPORT HIGHLIGHTS

Mission

The Mission of the Child Support Services Program is to assure that parents support their children. This is accomplished by locating each parent, establishing paternity, establishing support obligations, and enforcing those obligations.

Vision

Children can count on their parents for the financial, medical, and emotional support they need to be healthy and successful.

Automation Update:

- ◇ The current automated child support system is 25 years old. In 2012, work continued on moving the system to a more modern platform in preparation for future enhancements. Several county child support offices participated in a pilot to test the system. Full conversion is expected in June of 2013.

Child Support Grants:

- ◇ "Operation Access" explores ways to help active duty military families. To date, the Division of Child Support staff has directly served over 500 military families and provided information to more than 8,000 re-deploying service members through Re-Integration Training sessions.
- ◇ "Triple Play" which is part of the Building Assets for Fathers and Families (BAFF) program provides financial education and assistance to obligors to save up to \$1,000 in Individual Development Accounts. Savings in these accounts are matched at a four to one rate and can be used for acquiring assets such as post-secondary education and business or home ownership. The Division has a financial education curriculum in place and a schedule of weekly classes taught by an experienced financial educator. Participants in the program are now graduating from their respective classes and counseling and starting businesses, attending school, and planning their home purchases.
- ◇ The Colorado Parent Employment Project (CO-PEP) Grant was awarded to the Division of Child Support Enforcement in October 2012. During the first year, grant funds will be used to design a project to increase reliable child support payments among unemployed or underemployed noncustodial parents. Through the grant, these parents will be provided with child support led employment services and other supportive services resulting in better child support outcomes. Noncustodial parents will become more connected with their families and public costs lowered by the noncustodial parent's support of their public assisted families.



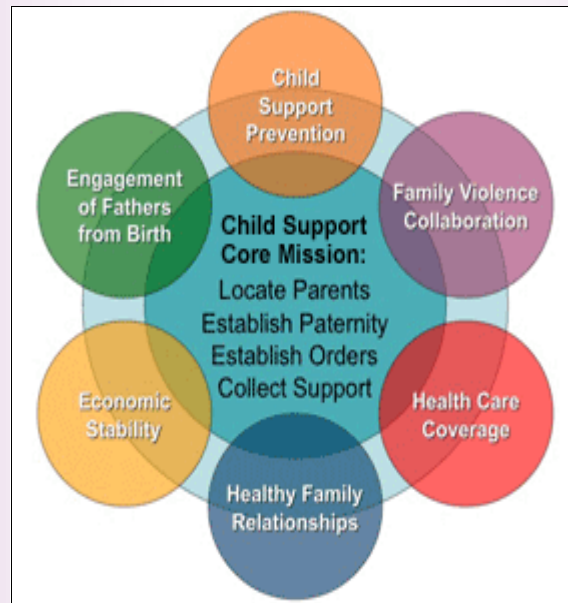
The Federal Office of Child Support Services has identified six innovative strategies, beyond the core mission of the Child Support Program, that will improve the reliability of child support payments.



Engagement of Fathers from Birth The child support program can increase child support payments by positively engaging with fathers early on, encouraging fathers to be more involved in their children's lives, and helping them overcome obstacles to supporting their children – reducing the likelihood that they will build up child support debt.

Economic Stability & Job Services Reliable child support payments depend upon noncustodial parents having stable income. The child support program can increase the likelihood of regular child support payments by helping noncustodial parents find and keep work, and connecting custodial and noncustodial parents to resources that help them achieve and maintain economic stability.

Preventing the Need for Child Support The child support program can help prevent the need for its services by promoting responsible childbearing and parenting choices and by raising awareness – especially among teenagers – of the financial, legal, and emotional responsibilities of parenthood.

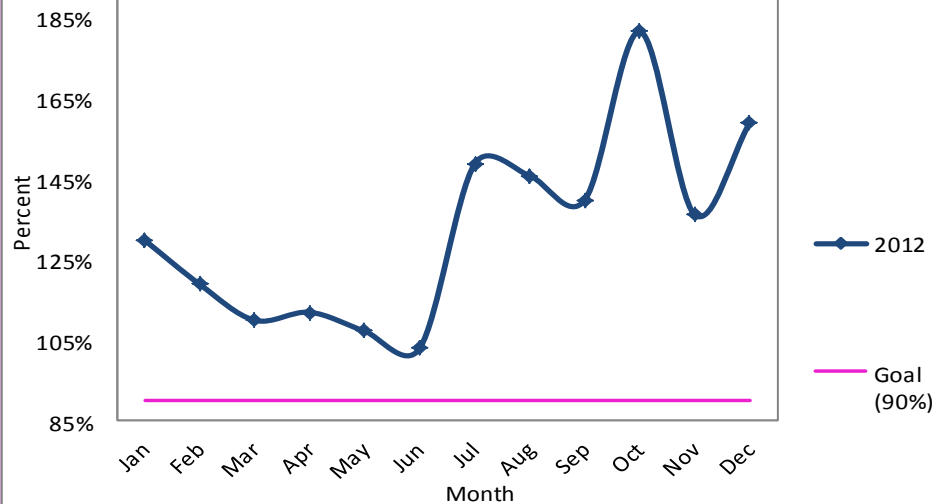


Healthy Family Relationships Three out of every four children who live apart from a parent are served by the child support program. When parents live apart, healthy relationships between parents and between parent and child are vitally important for both child well-being and stable child support payments.

Family Violence Because the child support program serves both parents, often around a crisis point, we have a unique responsibility – and a unique opportunity – to reduce the risk of family violence and help family violence survivors pursue child support safely. Collaborating with programs that address fatherhood, domestic violence, and child welfare can simultaneously reduce family violence, increase father involvement, and improve child support outcomes.

Health Care Coverage The child support program promotes children's health by establishing and enforcing medical support orders. The program can meet its responsibility to secure health care coverage for the children in its caseload by collaborating with private insurers, employers, Medicaid, CHIP, and, soon, new state health insurance Exchanges.

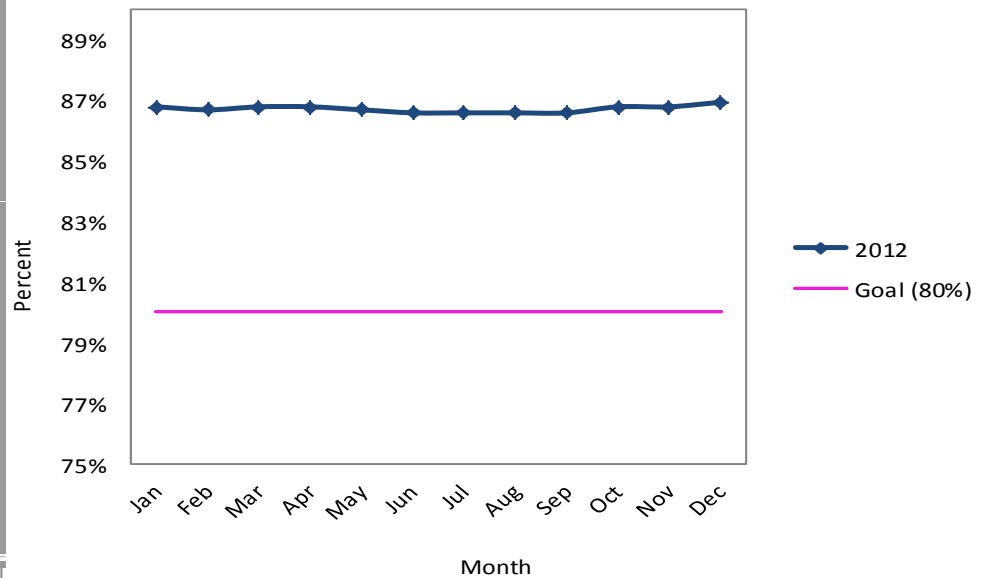
Percent of Paternities Established for Children Born Out of Wedlock



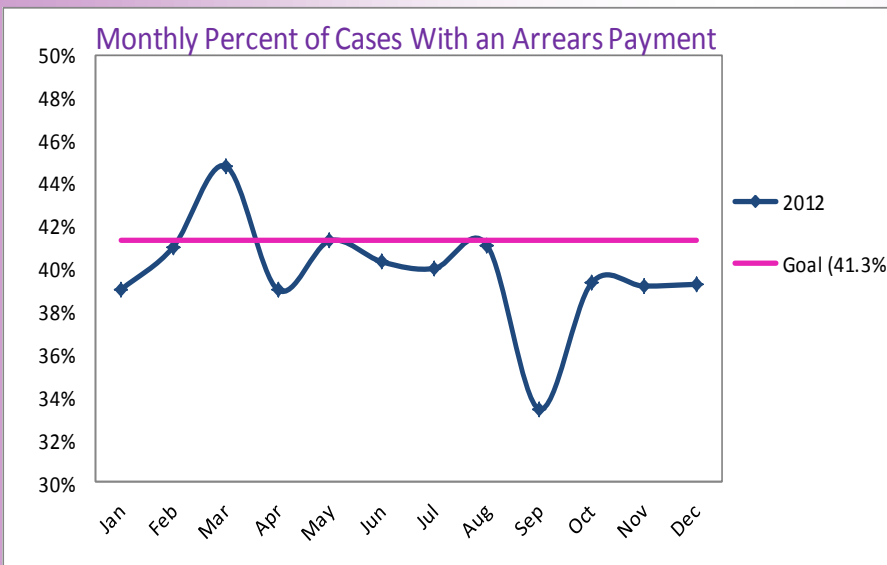
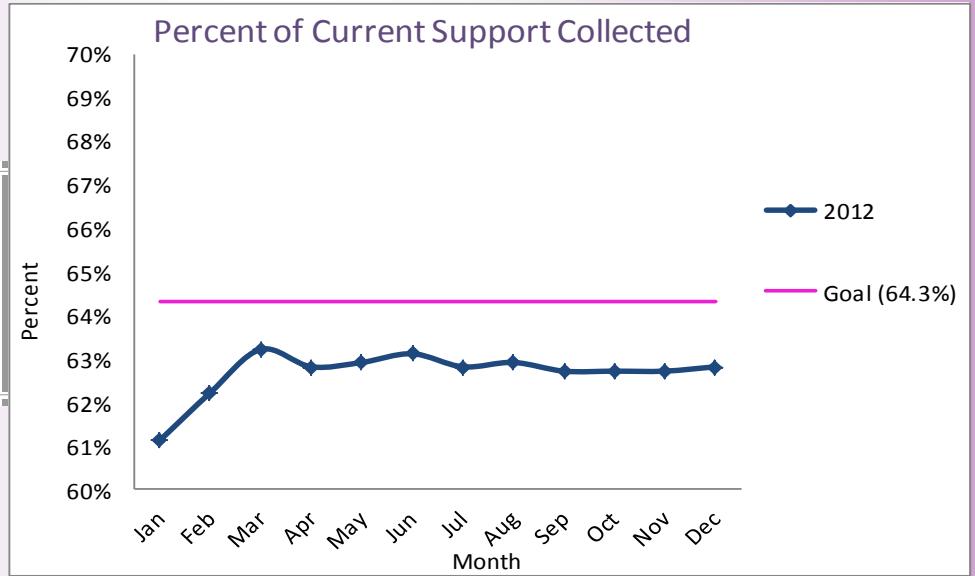
Ranked at # 4 in the nation, Colorado continues to be one of the top performers in the country in establishing paternity for children born out-of-wedlock. The Division of Child Support Services would like to recognize birthing hospitals, courts and hard working child support professionals for their efforts in establishing paternity.

Colorado is among the national leaders (ranked at #15) in cases with child support orders established. Child Support Services strives to ensure orders for financial and medical support are established reasonably and timely.

Percent of Cases With an Order Established



About 63% of all child support due is collected in the month it is due.



In 2012, the Division began measuring the percent of cases with an arrears payment received monthly as opposed to yearly. We believe this will better reflect our performance on the arrears measure.



Colorado Department of Human Services

Reggie Bicha, Executive Director

Office of Economic Security

Julie Kerksick, Office Director

Division of Child Support Services

Paulette St. James, Director

1575 Sherman Street

Denver, Colorado 80203

(303) 866-4300

<https://childsupport.state.co.us>

