

2021
2022

State Youth Development Plan



COLORADO
Office of Children,
Youth & Families
Division of Child Welfare



Working together to improve outcomes for youth.



The lives of Colorado children and youth are complex. Understanding and implementing approaches that address the overlapping root causes of violence (risk factors) and promote factors that increase resilience (protective factors) can help all of us more effectively and efficiently use limited resources.



Executive Summary

OVERVIEW

C.R.S. § 26-1-111.3 (statute) charges the Colorado Department of Human Services (CDHS) with creating and updating a Statewide Youth Development Plan in partnership with stakeholders and the Tony Grampsas Youth Services (TGYS) board. Over time CDHS has shifted from broad recommendations to specific and achievable projects.

This document presents a vision for a strong youth system, best practices, recommendations, action steps, repository information, and a report on the 2019-2020 Statewide Youth Development Plan (SYDP or the Plan). The future of the Plan is to exist as a compendium of resources and documents that support best practices, connect providers, and improve our Colorado youth system.

A VISION FOR A STRONG YOUTH SYSTEM

A unified youth system will gather youth-serving and grant-making organizations together to coordinate and leverage existing data, resources, and goals to identify and strategically respond to the needs of Colorado youth.

BEST PRACTICES

Statute calls for the Plan to identify successful, replicable youth development strategies nationally and in Colorado. The best practice approaches for prevention, intervention, and treatment presented for the 2019-2020 Plan include the following approaches and perspectives and remain the best practice recommendations for the 2021-2022 Plan.

Positive Youth Development (PYD) Approach

Shared Risk and Protective Factor Approach

Two-Generation (2Gen) Approach

Equity Focus

Wraparound and Coordinated Services



ACTION STEPS

The Plan has prioritized the following action steps to pursue for the next two years. Each step builds upon the other to result in increased capacity of the youth system in addressing the needs, implementing best practices, and creating sustainability.

ACTION STEP

1

Utilize the SYDP Dashboard:

Utilize key indicators from the SYDP dashboard to support identifying needs and gaps in service, inform funders, and support communities across Colorado to adapt and address these needs. See page 11 for more information.

ACTION STEP

2

Develop and Distribute a Compendium of Youth Resources:

Compile a compendium of Colorado resources, initiatives, and supports to address the gaps and needs in a central repository to increase the impact of the youth system. See page 11 for more information.

ACTION STEP

3

Support Systems in Embracing Best Practices:

Support youth systems in embracing the best practices outlined in the Plan with an emphasis on prevention, equity, and the positive youth development (PYD) approach. See page 12 for more information.



Table of Contents

■ Executive Summary	1
■ The Vision for a Strong Youth System.....	3
■ Statewide Youth Development Plan History.....	4
■ A Vision for a Unified Youth System.....	5
■ Best Practices for a Unified Youth System.....	6
■ Current Events Impacting Colorado Youth.....	9
■ Global Pandemic	9
■ Black Lives Matter and Social Injustice	10
■ 2021-2022 Statewide Youth Development Gaps and Themes.....	10
■ Action Steps	11
■ Get Involved	12
■ Appendix A: Plan updates.....	13
■ Appendix B: Acronyms	14
■ Appendix C: Reference Documents	15
■ Appendix D: Shared Values.....	16

The Vision for a Strong Youth System

The purpose of this document is to guide policymakers, grant-making agencies and programs, youth systems leaders, youth-serving professionals, and young people themselves in addressing the needs of Colorado youth ages 9 through 25. This document provides a vision for Colorado’s youth system, identifies areas of need, presents strategies to address the need through best practices, and creates action steps for the next two years.

Statute states, “subject to available funding, the State Department [CDHS],

in collaboration with the Tony Grampas Youth Services Board, created in section 26-6.8-103, shall convene a group of interested parties to create a Colorado Statewide Youth Development Plan” and “the goals of the Plan are to identify key issues affecting youth and align strategic efforts to achieve positive outcomes for all youth.” The SYDP statute also authorizes CDHS to “coordinate prevention and intervention programs focused on positive youth development in accordance with state law and rules” and the development of the Plan.

Statewide Youth Development Plan History

HISTORY TIMELINE OF SYDP

CREATION

In conjunction with the TGYS Board, CDHS Executive Director Reggie Bicha called for the creation of the Colorado Statewide Youth Development Plan Committee in 2014 to identify existing efforts, gaps in services, and proposed solutions for helping youth succeed. An equal number of state and community representatives were invited to sit on the committee to partner with youth committee members (see [Plan Development 2014](#) and [2014 Statewide Youth Development Plan Contributors](#)).

START

At the beginning of 2016, the Plan steering committee and Colorado 9 to 25s (CO9to25) leadership team combined to create the CO9to25 Council on Youth Development (the Council). At the time, CO9to25 adapted their bylaws and structure to spearhead the Plan and its development in partnership with CDHS. Although the Council was not legislatively recognized, it substantially satisfied the 2014 recommendation “to establish a legislatively recognized Colorado Council on youth development.”¹ CDHS provided funding for the CO9to25 “backbone” organization during SFY 2016 and SFY 2017.

GROWTH

The Council and other stakeholders provided input on the 2016 revision of the Plan. Between 2016 and 2018, CO9to25 listened to the needs and priorities of communities across Colorado (see [Regional Partnership Plan Overview](#)). The Council then implemented a Community Connectors pilot to continue gathering input from Colorado’s rural partners. Many partners were eager to collaborate across sectors and to engage youth in decision-making. Youth-serving agencies expressed a need for better coordination and efficiency at the state level, especially in the grant-making process.

FINE TUNING

In 2018, CDHS shifted resources from this broad, exploratory work to specific projects and goals developed in response to stakeholders’ needs. To make this shift, funding and staff time was redirected from the CO9to25 “backbone” to the specific projects outlined in the “Action Steps” section of this document. In particular, CDHS’s interagency resources now support the SYDP dashboard, related efforts to improve grant-making processes, expanded availability of PYD training, and more strategic support for communities.

FUTURE

The 2021-2022 Plan provides an opportunity to revisit the key issues affecting youth to determine if they are still relevant during a tumultuous year. Additionally, the Plan identifies a path forward to map youth services and supports available in Colorado as a compendium to support professionals.

¹ United Nations (October 2020). <https://www.un.org/press/en/2020/gaef3534.doc>

A Vision for a Unified Youth System

The 2018 CO9to25 survey of youth service providers and youth funders identified the two top systemic barriers impacting service delivery:

- 1 Lack of coordination between multiple systems (26%), and
- 2 Lack of adequate funding (30%).

Uncoordinated systems are not financially or operationally efficient. In turn, impacts are diffused.

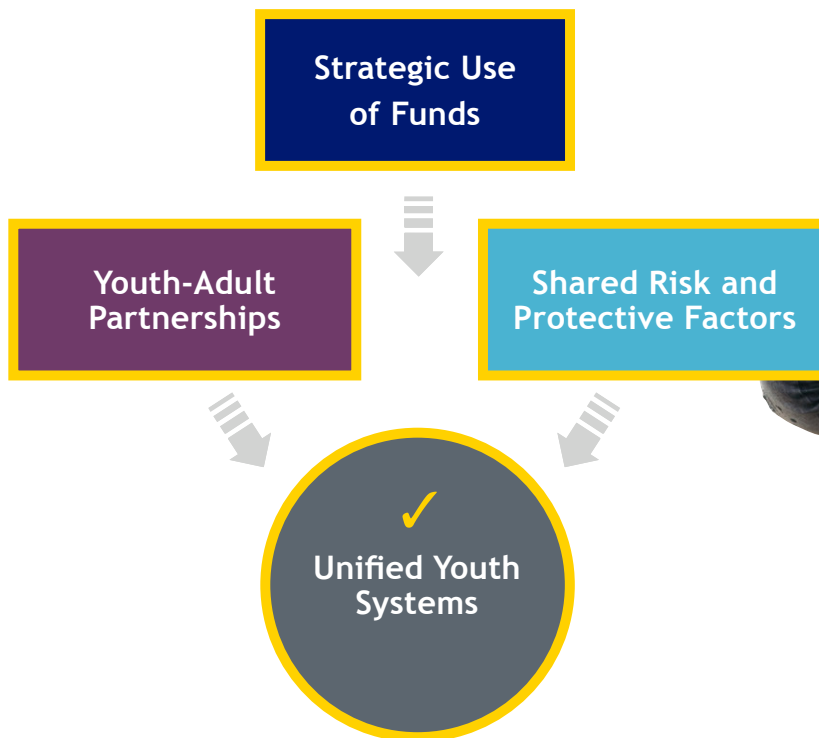
Colorado is a data-rich environment where much of the data needed to make informed decisions already exists. In a unified youth system, grant-making organizations and youth-serving agencies will leverage the robust data already available through the public health approach of shared risk and protective factors (see [Shared Risk and Protective Factors Approach](#)).

The 2021-2022 Plan continues the vision of a unified youth system and provides the framework for meaningful, strategic interagency collaboration and youth engagement. It incorporates authentic youth engagement in all phases of decision-making and asks for commitment from the highest level of state agency leadership, which is imperative to support and implement these simple, yet transformative changes.

“Our youth are not failing the system; the system is failing the youth. Ironically, the very youth who are being treated the worst are the young people who are going to lead us out of this nightmare.”

— Rachel Jackson, youth advocate

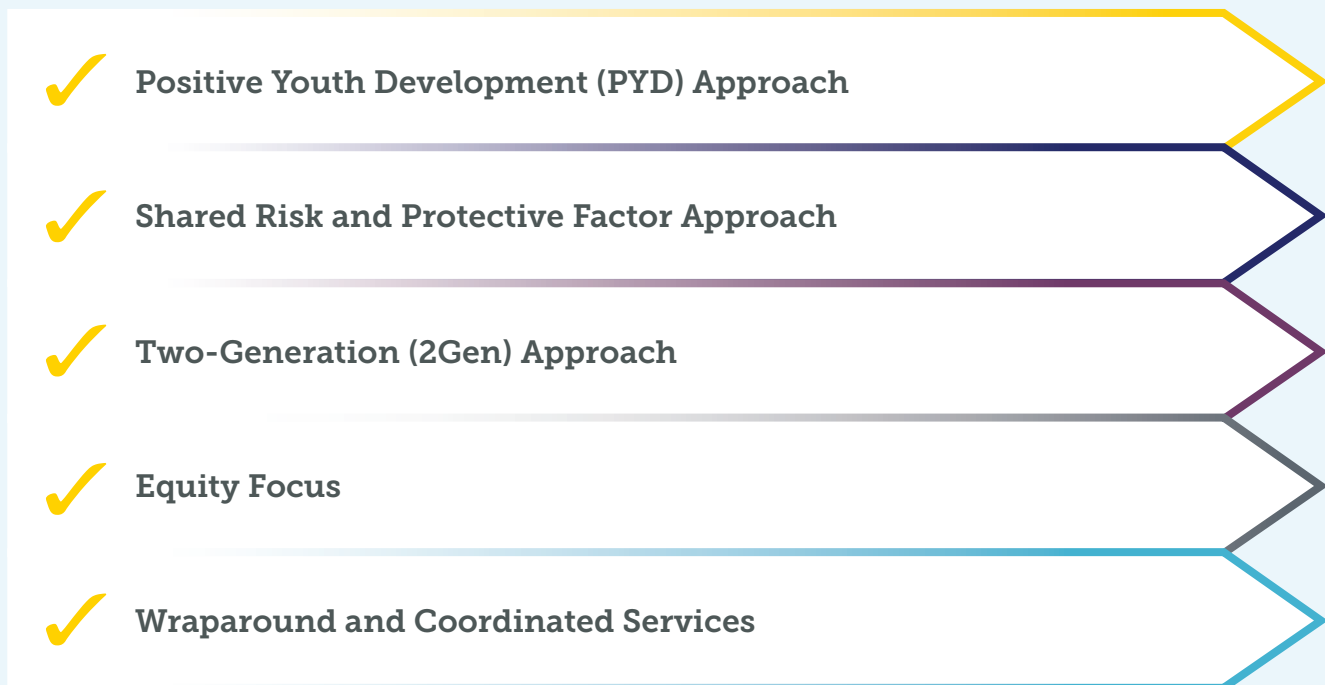
Figure 1. Creating a Unified Youth System



Best Practices for a Unified Youth System

The SYDP statute calls for the Plan to identify successful, replicable youth development strategies nationally and in Colorado that can be replicated by community partners and entities across the state. The best practice approaches for prevention, intervention, and treatment presented for the 2019-2020 Plan remain priorities. These include the positive youth development (PYD) approach, a shared risk and protective factor approach, Two-Generation (2Gen) approach, a focus on equity, and Wraparound and coordinated services.

Figure 2. Recommended Best Practices for Youth Systems



“We can’t impose our will on a system. We can listen to what the system tells us, and discover how its properties and our values can work together to bring forth something much better than could ever be produced by our will alone.”

—Donella H. Meadows, *Thinking in Systems*

■ Positive Youth Development Approach

Since its inception, the Plan has had a strong grounding in the principles of PYD. PYD remains a stalwart best practice for youth service professionals, organizations, and youth-focused state agency programs. At its core PYD focuses on building relationships with youth and engaging them in improving the services that impact them directly. PYD is more than a mindset; it is a framework adapted by the Colorado Department of Public Health and Environment (CDPHE) for empowering and engaging the young people of Colorado to create positive change and grow into successful adults (see [Positive Youth Development](#)).



Figure 3. CDPHE's Framework for Positive Youth Development



■ Shared Risk and Protective Factors

Effective prevention focuses on reducing the risk factors and strengthening the protective factors most closely related to the problem being addressed. While not a new concept, research from the Substance Abuse and Mental Health Services Administration (SAMSHA) and the Centers for Disease Control and Prevention (CDC) continues to find linkages identifying risk and protective factors that are shared between multiple forms of violence, substance use, and other physical health factors like obesity. If Colorado youth systems focus on a unified approach of selecting and prioritizing factors for a common agenda and increasing protective factors and addressing the risk factors, outcomes will ultimately be stronger and more sustainable (see [Shared Risk and Protective Factors](#)).

“Children, after all, are not just adults-in-the-making. They are people whose current needs and rights and experiences must be taken seriously.”

—Alfie Kohn, author and lecturer



■ Equity Focus

Certain populations of youth face disparities and disproportionalities, and this needs to be considered and addressed in decisions about policies, services, grants, and legislation. Equity is “just and fair inclusion throughout society and creating the conditions in which everyone can participate, prosper, and reach their full potential.”² At its heart, the equity approach addresses the needs of children and youth who suffer from multiple, overlapping deprivations and ensures the redistribution of resources and services to those most in need resulting in inclusivity and equality. When exploring universal outcomes for youth in Colorado an equity approach will examine policies, dismantle barriers, and ensure fairness and justice for those children and youth who are most marginalized. (see [Equity Approaches document](#))

² Equity Manifesto <http://www.policylink.org/about-us/equity-manifesto>

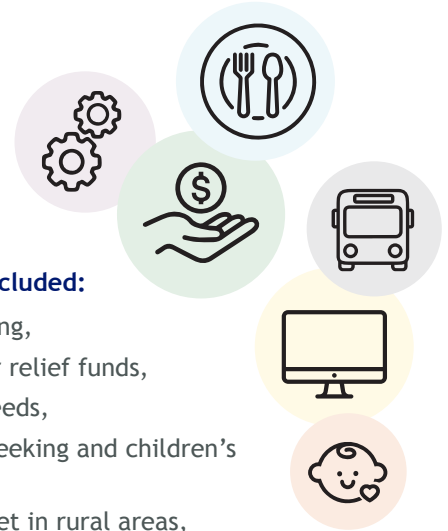
■ Two-Generation (2Gen) Approach

Youth exist in families, communities, and complex environments. Whole-family, or 2Gen, approaches focus on services and opportunities for children and youth as well as the adults in their lives. Through strengthening the family system, youth can be set up for success (see [Colorado’s Two-Generation Approach](#))

■ Wraparound and Coordinated Services Approaches

Youth with complex needs are often involved in multiple systems such as behavioral health, education, juvenile justice, or child welfare. There are multiple models for coordinated services in Colorado including Wraparound and the Collaborative Management Program. These approaches provide a strategy for collaboration and comprehensive support between systems to improve the experience and outcomes of youth and their families (see [Wraparound and Coordinated Services](#)).

Current Events Impacting Colorado Youth



COVID-19 GLOBAL PANDEMIC



The coronavirus pandemic, an ongoing global pandemic of coronavirus disease 2019 (COVID-19), is changing the landscape

for child, youth, and family stability. The World Health Organization declared the outbreak a public health emergency of international concern on January 30, 2020 and a pandemic on March 11, 2020. The pandemic has caused global social and economic disruption including the largest global recession since the Great Depression. Up to 100 million people worldwide have fallen into extreme poverty as of August 2020³. In Colorado, unemployment rates jumped from 4% to over 10% and were at 6.4% in September 2020, when this report was written.

Assessments of the impact of the pandemic are just beginning. Results from a COVID-19 Rapid Needs Assessment conducted by Results Lab from March through June 2020 indicated 85% of Coloradan's surveyed were somewhat to greatly affected by COVID-19. The majority are affected by employment or financial stability and many experienced impacts in an adult or child's education.

³ United Nations (October 2020). <https://www.un.org/press/en/2020/gaef3534.doc.htm>

The needs outlined included:

- Support in job seeking,
- Support applying for relief funds,
- Food and housing needs,
- Computers for job seeking and children's remote education,
- Access to the internet in rural areas,
- Transportation due to public transportation cuts, and
- Access to child care that is open, safe, and affordable.

The SYDP youth specialist conducted virtual regional development events to better assess community needs across Colorado. These Statewide Regional Youth Development Events (STRYDE) included representatives from youth serving organizations and state agencies. Participants indicated the need for flexible funding to increasingly adapt while children, youth, and families navigate the impact of the pandemic.

As this report is written, consideration must be given to the changing landscape over the next two years and aim to be responsive to the changing needs of youth and families.



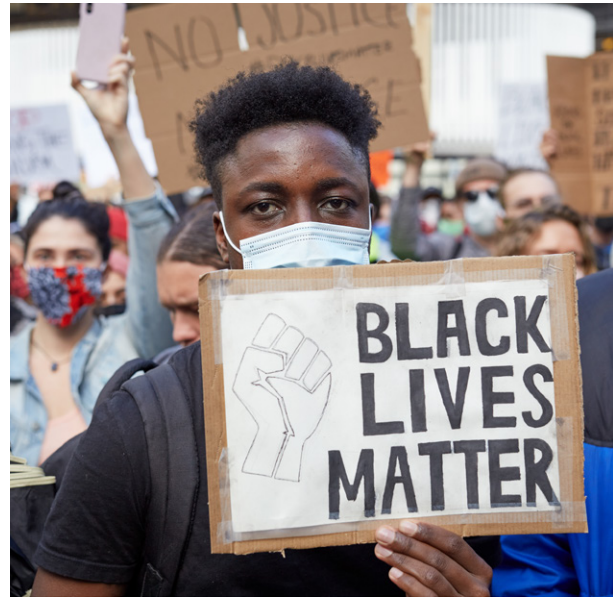
“If you have come to help me, you are wasting your time. If you have come because your liberation is bound up in mine, we can work together.”

—Lilla Watson, activist and academic



BLACK LIVES MATTER AND SOCIAL INJUSTICE

Black Lives Matter (BLM) is a decentralized movement advocating for non-violent civil disobedience through protest of incidents of police brutality against black people. Public opinion on BLM was historically mixed since its inception in 2013. Opinion has become increasingly more accepted following the killing of George Floyd in 2020 and the subsequent global protests regarding systemic racism. The movement has shed light on the continued racial tensions and disparities in our systems and the need for change. In Colorado and nationally, we have seen a renewed focus on working to decrease marginalization and highlight equitable practices. This focus on equity, diversity, and inclusion follows the SYDP best practices of equity and the 2019 Plan recommendations that states the “system should explore these disparities and begin reform.”



2021-2022 Statewide Youth Development Gaps and Themes

In the 2014 SYDP, several themes emerged from the review of data and practice across a variety of services areas, such as education, behavioral health, health, child welfare, homelessness, safety, and juvenile justice. Eight common gaps/themes were identified as impediments to successful youth outcomes in Colorado. While the 2014 gaps and themes have remained priorities, during a pandemic it is necessary to consider how these are changing. Statewide stakeholders responded to a survey in the fall of 2020 to indicate how they saw priorities shifting. Results indicated three priorities:

- 1 Focus on populations who experience disparities and stigmatizations (racial, sexual orientation, socio-economic, etc.),
- 2 Focus on supporting youth behavioral health needs, and
- 3 Focus on supporting youth during periods of transition.

Results also indicated that gaps are widening for our marginalized communities and are amplified due to the coronavirus pandemic. With youth and families isolated at home, economic and educational disparities are growing. Colorado anticipates spikes in behavioral health needs, increases in youth rates of homelessness, and greater uncertainty in funding for youth service providers.



Action Steps

The Statewide Youth Development Plan has prioritized the following action steps to pursue for the next two years of the Plan.

ACTION STEP

1

Utilize the SYDP Dashboard:

Utilize key indicators from the SYDP dashboard to support identifying needs and gaps in service, inform funders, and support communities across Colorado to adapt and address these needs.

The SYDP Dashboard currently highlights a baseline of factors that impact youth. The SYDP youth specialist will continue outreach about the dashboard as a tool to inform stakeholders and funders throughout 2021-2022.

Next steps include integrating updated data from 2019 data sources to create increased relevance of the dashboard to communities. Future expansion includes identifying gaps in coverage that impact youth development outcomes and an outline of youth service organizations, specifically, identifying organizations that serve: 1.) populations who experience disparities and stigmatizations (racial, sexual orientation, socio-economic, etc.) 2.) populations who have behavioral health needs, and 3.) children and youth moving through periods of transition. The SYDP youth specialist will partner with other initiatives to collect relevant data to be connected to the SYDP Dashboard and repository by December 2021.

ACTION STEP

2

Develop and Distribute a Compendium of Youth Resources:

Compile a compendium of Colorado resources in a central repository that impact the youth system and ensure wide access to this resource to support collaboration, access to funding, and best practice implementation.

Due to the economic uncertainty during the COVID-19 pandemic, the landscape of youth services in Colorado is changing rapidly. The stability of youth serving organizations is uncertain, and government budgets and funding are also fluctuating. The SYDP statute calls for an outline of youth initiatives, funding, strategies, and youth service organizations.

“The plan must:

- a. Identify initiatives and strategies, organizations, and gaps in coverage that impact youth development outcomes;
- b. Identify services, funding, and partnerships necessary to ensure that youth have the means and the social and emotional skills to successfully transition to adulthood;
- c. Determine what is necessary in terms of community involvement to ensure youth succeed;
- d. Develop an outline of youth service organizations based on, but not limited to, demographics, current services and capacity, and community involvement;”⁴

While much of this information exists, it is not collected in a central repository.

⁴ Section 26-1-111.3, C.R.S.

ACTION STEP

2

Develop and Distribute a Compendium of Youth Resources:

Continued...

By December 2021, and in partnership with other state grant programs, the SYDP youth specialist will conduct fiscal mapping to identify the changes in funding and create a repository of resources available to support youth in Colorado. This will include:

- Current grant allocations that serve youth 9 through 25, with a focus on
 - *populations who experience disparities and stigmatizations (racial, sexual orientation, socio-economic, etc.)*
 - *populations who have behavioral health needs, and*
 - *serving children and youth through periods of transition.*
- Current initiatives that impact youth, specific to
 - *addressing disparities,*
 - *behavioral health needs, and*
 - *supporting children and youth through periods of transition.*
- Flexible funding sources.
- Active youth councils, youth/adult partnerships, and statewide youth engagement efforts that address disparities, behavioral health needs, and transitioning youth.

ACTION STEP

3

Support Systems in Embracing Best Practices:

Support youth systems in embracing the best practices outlined in the Plan with an emphasis on prevention, equity, and PYD practices.

The best practices outlined in the Plan are becoming more widely recognized across Colorado, however, there is still much work to promote and implement these practices more thoroughly. By December 2022 the SYDP youth specialist will work with community partners and funders identified in the fiscal mapping to prioritize allocation of funding that builds capacity and expands the use of these best practices.

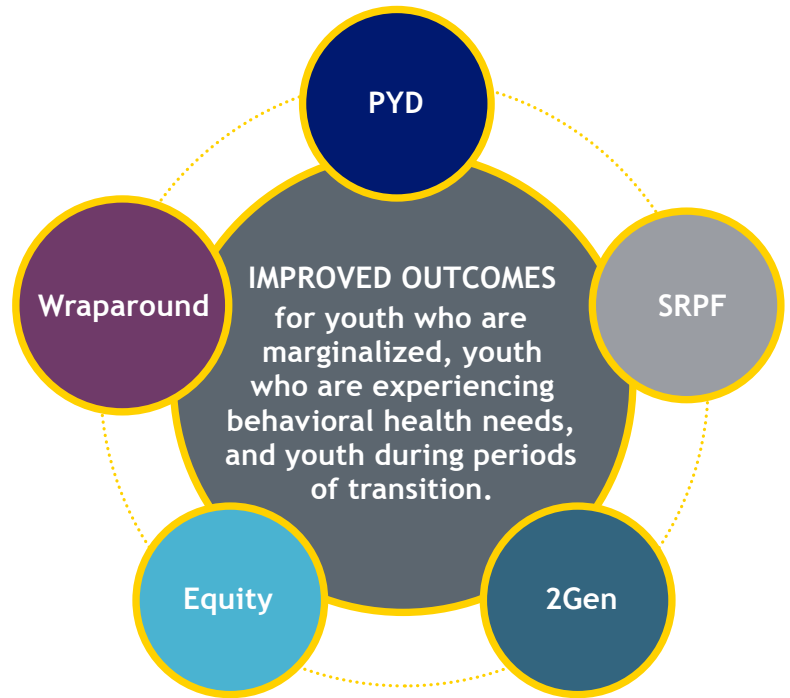
Conclusion



To create a youth serving system where all youth are safe, healthy, educated, connected, and contributing it takes all Coloradans working towards the same outcomes. The Plan presents a vision of collaborative action. By jointly shifting the state youth system to provide cross system coordination and alignment towards a common agenda, all youth can have the opportunity to reach their full potential.

Utilizing best practice approaches like PYD, Wraparound and coordinated services, and 2Gen as well as focusing universally on efforts like shared risk or protective factors and selecting strategies through an equity lens allows youth systems to build a stronger generation of youth in Colorado.

Figure 4. Improved outcomes



Working together to improve outcomes for youth.



Appendix A: Plan Updates

PLAN UPDATES		
Action Step	Status	Updates
<p>Identify areas of need: Leverage existing data on key well-being indicators and services including shared risk and protective factors to create the SYDP Dashboard.</p>	Complete	<p>Outcome: The SYDP public-facing dashboard will be developed and posted on the CDHS website by June 2020.</p> <p>Update: The SYDP youth specialist in partnership with the TGYS Board completed two phases of development and produced a youth dashboard for data pertaining to youth ages 9-21years and an early childhood dashboard for indicators that impact families and children ages 0-8yrs. Both can be found at https://sydpheatmap.cdhs.state.co.us/.</p> <p>The SYDP youth specialist identified risk and protective factors that impact youth across the state and that support the TGYS outcomes of preventing youth crime and violence, child abuse and neglect, youth marijuana use, and school dropout. This first phase of the dashboard focused on supporting the TGYS Board in making funding decisions for the SFY21-23 Request for Application (RFA). The dashboard combined regional self-report indicators from the 2017 Healthy Kids Colorado data as well as county-level risk indicators. Having all of these indicators in one place enabled the TGYS Board to prioritize nine counties for the SFY21-23 RFA that had five or more indicators on the dashboard.</p> <p>The dashboard can continue to be used by cross-systems funders to better align resources and to provide support to local communities in identifying collaboration opportunities or areas of need. This project highlighted not only the need for indicators for youth ages 9 through 25 but also for early childhood.</p> <p>The early childhood dashboard was created after partnering with the Office on Early Childhood and other early childhood stakeholders to identify relevant indicators of interest in predicting child, youth, and family success. These indicators align with the social determinants of health, and the focus is on the social and physical environments that impact health, well-being, and success of children and their families in order to highlight regions where support is needed.</p>

<p>Coordinate resources: Facilitate collaboration between state grant-making programs to use limited resources strategically to fill gaps in services.</p>	<p>Ongoing</p>	<p>Outcome: In partnership with other state granting programs, CDHS will continue efforts to create commonality in grant application processes and create an online grant application system by June 2020.</p> <p>Update: As a first step in working towards common grant making practices, TGYS and SYDP pursued a common platform to serve as an online system for grant applications. The statewide grant managers group, convened by the Department of Personnel Administration (DPA), has been pursuing grants integration with the state system, CORE, in order to more easily distribute funds. This is currently on hold due to budget cuts.</p> <p>In October 2019, TGYS piloted Survey Monkey Apply (SMA), an online platform for their SFY21-23 RFA. Survey Monkey Apply was purchased with a master agreement allowing expansion for additional agencies seeking to align and collaborate. Currently, 2-3 other CDHS grant programs are considering SMA as a platform for their application process.</p> <p>Additionally, the SYDP youth specialist, in coordination with TGYS staff and in partnership with the Substance Use Funders Collaborative, continue work to identify common language across funders. A list of shared values and approaches that help alignment across statewide public agencies who support prevention in the substance use arena was created. This document can be found in Appendix D: Shared Values. Further work continues to inform the compendium of resources relevant to the Colorado youth system.</p>
<p>Support local systems: Address identified gaps, themes, and needs</p>	<p>Ongoing</p>	<p>Outcome: Address identified gaps, themes, and needs. CDHS will prioritize and tailor technical assistance to regions based on the SYDP Dashboard. CDHS will work with communities to identify active collaborations in prioritized regions and support them in generating priorities and strategies.</p> <p>Update: In partnership with TGYS, the SYDP staff have prioritized nine counties for the SFY21-23 RFA. SYDP staff held community meetings to outreach and share the SYDP Dashboard and the TGYS RFA funding opportunity. Through existing partnerships with Communities that Care, Collaborative Management Program, education stakeholders, judicial partners, and other statewide networks efforts continue to disseminate this information and support communities in generating strategies to find appropriate funding and close gaps.</p> <p>Work continued through the pandemic in 2020 to hold virtual regional connections (STRYDE events) and identify new gaps due to COVID. Virtual STRYDE events will continue as a platform for sharing relevant information, promoting the SYDP Dashboard, collecting data, and supporting youth providers during the pandemic.</p>

Appendix B: Acronyms

21st Century — 21st Century Community Learning Centers
2Gen — Two-Generation
CDC — Centers for Disease Control and Prevention
CDHS — Colorado Department of Human Services
CDPHE — Colorado Department of Public Health and Environment
CO9to25 — Colorado 9to25
Council — Colorado 9to25 Council on Youth Development
PYD — Positive Youth Development
RFA — Request for Applications
RFP — Request For Proposals
SAMHSA — Substance Abuse and Mental Health Services Administration
Statue — Colorado Revised Statutes § 26-1-111.3
SYDP — Statewide Youth Development Plan
STRYDE — Statewide Regional Youth Development Event
TGYS — Tony Grampasas Youth Services
The Plan — Statewide Youth Development Plan



Appendix C: Reference Documents

All reference documents can be found at:

<https://www.colorado.gov/pacific/cdhs/colorado-statewide-youth-development-plan>

- C.R.S. 26-1-111.3
- Statewide Youth Development Plan Statute Summary HB 13-1239
- Plan Development 2014
- 2014 Statewide Youth Development Plan Contributors
- 2014 SYDP GAPS and Themes
- Positive Youth Development
- Shared Risk and Protective Factors Approach
- Two Gen approach
- Equity Approach
- Wraparound and Coordinated Services Approach



Appendix D: Shared Values

PREVENTION FUNDERS COLLABORATIVE

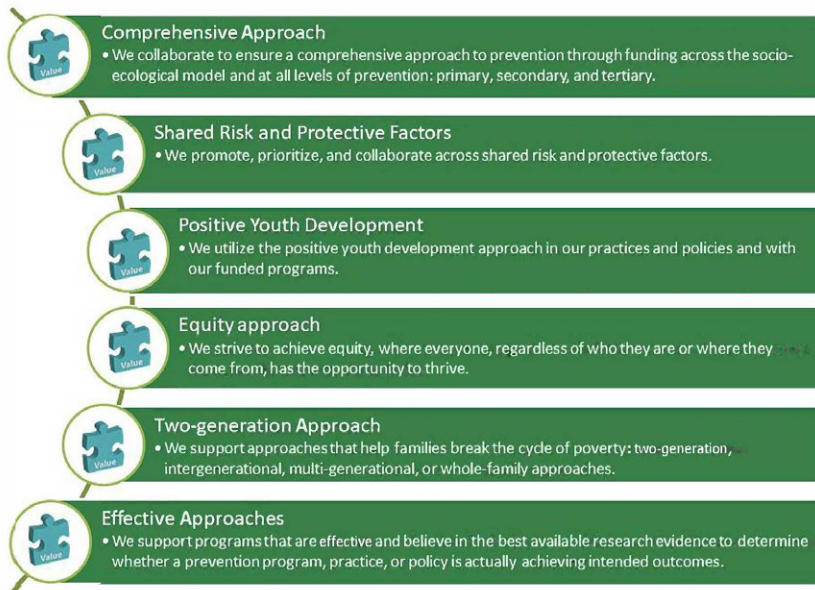
Shared Values

A list of shared values and approaches that help alignment across statewide public agencies who support prevention.

THE GOAL

As prevention professionals, we recognize issues that are common among the children, youth, families and communities we serve - issues like poverty, families dealing with substance abuse, and youth who are not connected to or do not feel safe at school.

The Prevention Funders Collaborative strives to foster interagency and cross-organization networking and recognizes the inherent value of alignment and collaboration. The following is a list of shared values and approaches that help alignment across our programs.



While we may slightly differ in our definitions of these terms, we strive to provide comprehensive prevention approaches across agencies.



WHAT IS THE PREVENTION FUNDERS COLLABORATIVE

The PFC is a group of statewide public agencies who support primary prevention efforts across Colorado who administer over \$40m in state and federal dollars supporting prevention programs, policies and approaches in schools, public health agencies, and community non-profits. The PFC was created to better align and leverage funding across each of our programs and to better collaborate and align our values, so local communities have a clearer picture about available funding sources to address local needs. When we better collaborate and align to these values, local communities have a more clear picture about available funding sources to address local needs.

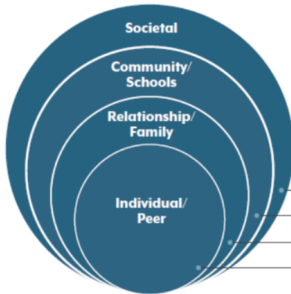
What do we mean when these words are used: effective, evidence-based, research-based, best practices? How does this relate to programs, policies, practices, strategies, and approaches? A comprehensive prevention approach is using effective prevention programs, practices, policies, or strategies that include multiple types of activities affect multiple settings, and goes beyond awareness-raising. We rely on evaluation to determine effectiveness and best practices.

Effective evidence-based and research-based best practices all have prevention science behind them. They have been tested in the community, with a specific population, or for a particular issue to improve outcomes in a “real world” situation. Because of this testing, there is documentation and data showing a strong potential or success for the program, practice, policy, or strategy to work.

Depending on the focus area, there are multiple theories and levels of effectiveness in which funders will invest to ensure the work aligns with prevention science.

PFC SHARED VALUES | 1

Members of the Funders Collaborative



Funding Streams	
Administrators of Streams noted in key below	
Communities That Care (CTC)	Colorado Department of Public Health and Environment
Retail Marijuana Education Program	Colorado Department of Public Health and Environment
Colorado Attorney General's Office Prevention Efforts	Colorado Department of Public Health and Environment
Federal Drug-Free Community Grants	Other
Strategic Prevention Framework (SPF)	Colorado Office of Behavioral Health
Substance Abuse Block Grant (SABG)	Colorado Office of Behavioral Health
Persistent Drunk Driving (PDD) and Low Enforcement Assistance Cash Fund (LEAF)	Colorado Department of Education
School Health Professionals Grant	Colorado Department of Education
Tony Grampas Youth Services (TGS)	Colorado Department of Human Services

What do we mean continued...

The primary goal of prevention science is to improve public health by identifying risk and protective factors, assessing the efficacy and effectiveness of preventive interventions, and identifying the most favorable means for dissemination.

The field involves the study of human development and social ecology as well as the identification of factors and processes that lead to positive and negative health behaviors and outcomes.

Theories of human development are used to design interventions (programs and policies) that target the reduction of risk and the enhancement of protective factors at the individual, familial, peer, community, and environmental levels.

Socio Ecological Model (SEM)

The Social Ecological Model (SEM) is a theory-based framework for understanding the personal and environmental factors and approaches that influence outcomes and for identifying behavioral and organizational leverage points. Impactful prevention acts across multiple levels of the model at the same time.



Community- Level vs. Community-Based

People often confuse community-level (from the socio-ecological model) interventions with community-based interventions. Both are important and essential work within the prevention field. Community-level (societal or policy) strategies impact the social and physical environment. Some examples which change the social environment include reducing social isolation, improving economic and housing opportunities in neighborhoods, as well as adapting the processes, policies, and social environment within school and workplace settings. Another example which changes the physical environment is adapting the availability or location of transportation and resources that promote health or recreation. The term community-based interventions refers to interventions that take place within local communities and with organizations that are viewed as neighborhood institutions. These diverse organizations range in size from volunteer-run organizations to multimillion-dollar entities and provide a critical array of opportunities and services. Often community-based interventions, involve members of the affected community in the planning, development, implementation, and evaluation of programs and strategies.



Positive Youth Development (PYD)



Positive youth development is a strengths-based approach with adolescents. This approach focuses on helping youth acquire the knowledge and skills they need to become healthy and productive adults. Positive youth development guides communities and organizations in how they organize services, provide opportunities, and engage youth in reaching their full potential.

Positive youth development incorporates the development of skills, opportunities, and authentic relationships into programs, practices, and policies. <https://www.colorado.gov/pacific/cdphe/positive-youth-development>

Equity

Equity is part of a complex continuum that includes diversity, inclusion, and equality. Equity is when everyone, regardless of who they are or where they come from, has the opportunity to thrive. This requires eliminating barriers like poverty and repairing injustices in systems such as education, health, criminal justice, and transportation.*

* From the Colorado Office of Health Equity

Prevention Continuum

Primary

Approaches that strive to protect individuals in order to avoid problems prior to signs or symptoms of problems.

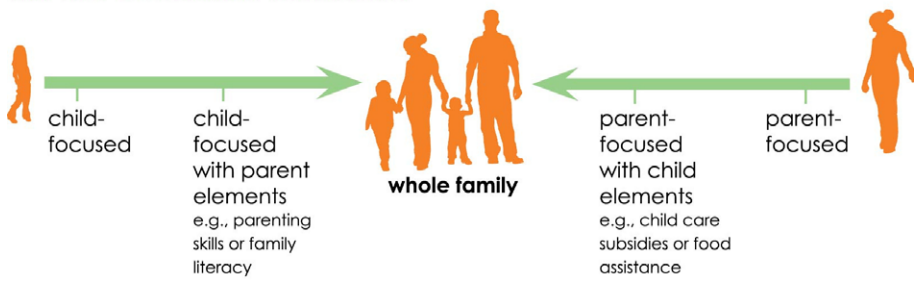
Secondary

Approaches that identify individuals in the early stages of problem behaviors and attempts to avert the negative consequences by encouraging individuals to cease their problem behavior. It is often referred to as early intervention.

Tertiary

Approaches that strive to end problem behavior and/or to ameliorate their negative effects through treatment and rehabilitation. This is most often referred to as treatment but also includes rehabilitation and relapse prevention (i.e. corrective services.)

The Two-Generation Continuum



Two-generation (2Gen) approaches build family well-being by intentionally and simultaneously working with children and the adults in their lives together. This approach recognizes that families come in all different shapes and sizes and that families define themselves.



COLORADO

PFC SHARED VALUES | 3

Shared Risk and Protective Factors

In order to improve behavioral health in communities, it is important to understand the association of common or shared risk and protective factors across problem behaviors and across sectors. A large number of risk and protective factors are associated with multiple priority areas including violence prevention, substance use, and mental health. Risk factors can be predictors of problem behaviors in adolescence including those characteristics or situations that are known to increase the probability of negative health or behavioral outcomes. Protective factors buffer against risk factors. Protective factors mitigate or protect against negative health or behavioral outcomes.

- Some programs have well-researched and specific lists of what qualifies as a risk or protective factor that impacts multiple health outcomes. Other programs may use this terminology broadly and conceptually, not specific to researched-indicators. Be sure you are aware how your funding source and evaluation interprets this terminology.
- Risk factors are not the same as being a person “at risk” for an outcome.
- Sometimes people use this phrase to mean the same as the Social Determinants of Health.*
- Some risk factors are included in the list of Adverse Childhood Experiences (ACEs).*

*For information on the Social Determinants of Health -<https://www.cdc.gov/socialdeterminants/index.htm> and for information on ACEs-<https://www.cdc.gov/vitalsigns/aces/index.html>.

RISK & PROTECTIVE FACTORS AND IMPACTED OUTCOMES ACROSS THE SOCIO-ECOLOGICAL MODEL							
Examples of Risk & Protective Factors	Impacted Outcomes Across the Socio-ecological Model						Colorado Data Sources
	Substance Abuse	Depression & Anxiety	Teen Pregnancy	School Dropout	Violence	Delinquency	
COMMUNITY / SOCIETY							
Availability of Substances	X				X		Healthy Kids CO Survey (HKCS) local report with scaled risk and protective factors
Community Laws and Norms Favorable Toward Substance Use	X				X	X	HKCS local report with scaled risk and protective factors, Community Resource Assessment
Low Neighborhood Attachment and Community Disorganization	X				X	X	Identify during Assessing Community Resources work, voting participation, admissions to prison by county of residents
Transitions and Mobility ^a	X	X		X		X	Secondary data sources and qualitative methods, key informant interviews and local housing data
Extreme Economic Deprivation	X		X	X	X	X	Unemployment rates, free and reduced lunch, number of TANF recipients, number of food stamp recipients, educational attainment and single-parent households, cost of childcare, family-friendly business practices
Protective: Opportunities for Prosocial Involvement	X					X	Identify during Assessing Community Resources work
Protective: Recognition for Prosocial Involvement	X	X			X	X	Identify during Assessing Community Resources work
SCHOOL							
Academic Failure Beginning in Late Elementary School	X	X	X	X	X	X	HKCS local report with scaled risk and protective factors
Lack of Commitment to School	X	X	X	X	X	X	HKCS local report with scaled risk and protective factors, high school dropout rates
Protective: School Opportunities for Prosocial Involvement	X					X	HKCS local report with scaled risk and protective factors
FAMILY							
Family Management Problems	X	X	X	X	X	X	HKCS local report with scaled risk and protective factors, percentage of children in foster care
Family History of Substance Abuse	X	X	X	X	X	X	Behavioral Risk Factor Surveillance System (BRFSS; the Center for Disease Control's survey of health-related risk behaviors, including substance abuse)
Favorable Parental Attitudes and Involvement in Substance Use	X				X	X	HKCS local report with scaled risk and protective factors
Protective: Family Opportunities for Prosocial Involvement	X					X	HKCS local report with scaled risk and protective factors
INDIVIDUAL / RELATIONSHIP							
Favorable Attitudes Toward Substance Use	X		X	X	X	X	HKCS local report with scaled risk and protective factors
Early Initiation of Substance Use	X		X	X	X	X	HKCS local report with scaled risk and protective factors

^aA few communities use alternative data sources for Transitions and Mobility, therefore strategies to address this risk factor are part of the Colorado Menu of Systems Change Strategies. For that reason, it is included in this chart, though not all communities may have available data sources to monitor impact over time.

Note: This chart is provided as a Colorado companion to the CTC Risk and Protective Factor charts, and summarizes data sources for the factors for which we currently have measures in Colorado. For more information, please refer to document: Menu Systems Change Strategies. Available at: <http://bit.ly/Menu Systems Change Strategies>



COLORADO

PFC SHARED VALUES | 4





COLORADO
Office of Children,
Youth & Families
Division of Child Welfare

DASHBOARD INFORMATION

<https://sydpheatmap.cdhs.state.co.us/youth>



2021
2022

State Youth Development Plan