

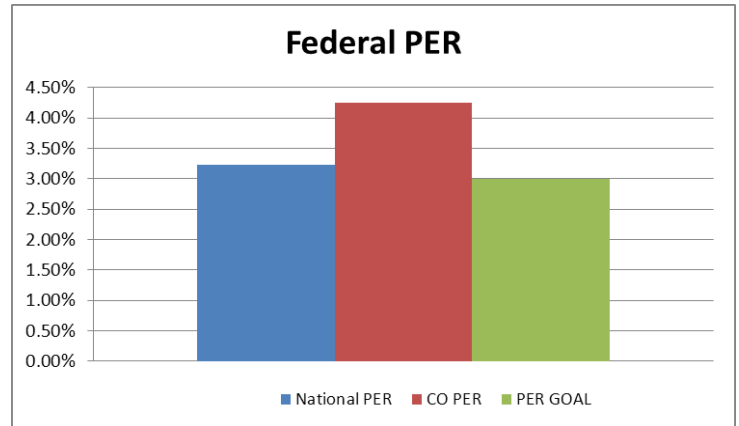
COLORADO SNAP QUALITY CONTROL MONTHLY SUMMARY REPORT FEDERAL FISCAL YEAR 2014

(October – July 2014)

COLORADO PAYMENT ERROR RATES (PER)*:

PER FFY 2014	
National PER	3.26%
CO PER	4.25%
PER GOAL	3.00%

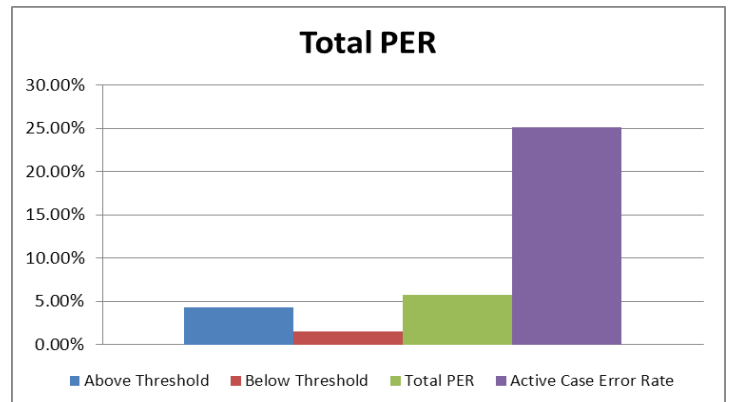
*This represents the PER that the federal office uses to determine fiscal penalties and is compared to other state PERs.



STATEWIDE TOTAL PER AND CASE ERROR RATES**:

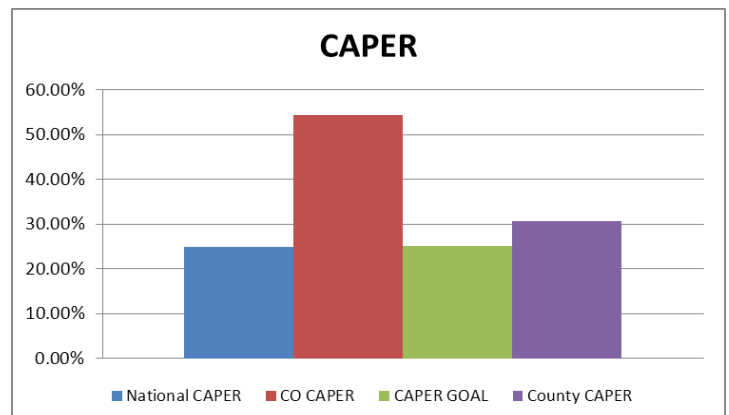
FFY 2014 Total PER	
Above Threshold	4.25%
Below Threshold	.87%
Total PER	5.13%
Active Case Error Rate	25.19%

**This represents all payment errors regardless of the dollar amount and all active cases with a dollar error.



COLORADO CASE AND PROCEDURAL ERROR RATE (CAPER):

CAPER FFY 2014	
National CAPER	25.00%
CO CAPER	54.36%
CAPER GOAL	25.00%
County CAPER	34.71%



FFY 2014 SNAP Payment Error Rates

Red = exceeds goal

Blue = largest contributors to PER

County	Completed Reviews	Above	Below	Case Error Rate	TOTAL SAMPLED ALLOTMENT	DOLLARS IN ERROR	Above Error Rate	% of State Caseload	% of State PER	Below Threshold \$ Errors	TOTAL ERROR RATE
Adams	75	7	12	25.33%	\$24,591	\$865	3.52%	9.63%	9.46%	\$221	4.42%
Alamosa	10	0	1	10.00%	\$2,337	\$0	0.00%	0.88%	0.00%	\$4	0.17%
Arapahoe	77	9	9	23.38%	\$22,046	\$779	3.53%	9.90%	8.52%	\$171	4.31%
Archuleta	1	0		0.00%	\$189	\$0	0.00%	0.22%	0.00%		0.00%
Baca	0	0		#DIV/0!	\$0	\$0	#DIV/0!	0.08%	0.00%		#DIV/0!
Bent	0	0		#DIV/0!	\$0	\$0	#DIV/0!	0.21%	0.00%		#DIV/0!
Boulder	27	2	5	25.93%	\$7,821	\$169	2.16%	3.47%	1.85%	\$96	3.39%
Broomfield	3	0		0.00%	\$589		0.00%	0.40%	0.00%		0.00%
Chaffee	3	0		0.00%	\$682	\$0	0.00%	0.32%	0.00%		0.00%
Cheyenne	0	0		#DIV/0!	\$0	\$0	#DIV/0!	0.03%	0.00%		#DIV/0!
Clear Creek	2	1		50.00%	\$305	\$64	20.98%	0.15%	0.70%		20.98%
Conejos	3	0		0.00%	\$369	\$0	0.00%	0.38%	0.00%		0.00%
Costilla	3	0		0.00%	\$1,128	\$0	0.00%	0.26%	0.00%		0.00%
Crowley	0	0		#DIV/0!	\$0	\$0	#DIV/0!	0.16%	0.00%		#DIV/0!
Custer	2	0	1	50.00%	\$831	\$0	0.00%	0.09%	0.00%	\$1	0.12%
Delta	10	0	3	30.00%	\$2,167	\$0	0.00%	0.85%	0.00%	\$66	3.05%
Denver	137	22	25	34.31%	\$38,284	\$2,503	6.54%	19.00%	27.38%	\$419	7.63%
Dolores	1	0		0.00%	\$610	\$0	0.00%	0.03%	0.00%		0.00%
Douglas	14	3	1	28.57%	\$4,801	\$304	6.33%	1.19%	3.32%	\$30	6.96%
Eagle	0	0		#DIV/0!	\$0	\$0	#DIV/0!	0.30%	0.00%		#DIV/0!
Elbert	0	0		#DIV/0!	\$0	\$0	#DIV/0!	0.19%	0.00%		#DIV/0!
El Paso	114	15	17	28.07%	\$33,346	\$1,713	5.14%	14.04%	18.74%	\$284	5.99%
Fremont	12	3		25.00%	\$2,393	\$323	13.50%	1.14%	3.53%		13.50%
Garfield	8	1		12.50%	\$2,469	\$68	2.75%	0.96%	0.74%		2.75%
Gilpin	1	0		0.00%	\$589	\$0	0.00%	0.11%	0.00%		0.00%
Grand	1	0		0.00%	\$189	\$0	0.00%	0.12%	0.00%		0.00%
Gunnison	1	0		0.00%	\$489	\$0	0.00%	0.21%	0.00%		0.00%
Hinsdale	0	0		#DIV/0!	\$0	\$0	#DIV/0!	0.01%	0.00%		#DIV/0!
Huerfano	5	0		0.00%	\$1,174	\$0	0.00%	0.38%	0.00%		0.00%
Jackson	0	0		#DIV/0!	\$0	\$0	#DIV/0!	0.03%	0.00%		#DIV/0!
Jefferson	47	5	7	25.53%	\$9,801	\$308	3.14%	6.73%	3.37%	\$75	3.91%
Kiowa	1	0		0.00%	\$28	\$0	0.00%	0.04%	0.00%		0.00%
Kit Carson	0	0		#DIV/0!	\$0	\$0	#DIV/0!	0.12%	0.00%		#DIV/0!
Lake	1	0		0.00%	\$200	\$0	0.00%	0.13%	0.00%		0.00%
La Plata	7	0	2	28.57%	\$2,159	\$0	0.00%	0.78%	0.00%	\$43	1.99%
Larimer	36	3	8	30.56%	\$9,534	\$459	4.81%	4.81%	5.02%	\$79	5.64%
Las Animas	6	1	1	33.33%	\$1,044	\$132	12.64%	0.65%	1.44%	\$6	13.22%
Lincoln	0	0		#DIV/0!	\$0	\$0	#DIV/0!	0.10%	0.00%		#DIV/0!
Logan	4	0		0.00%	\$825	\$0	0.00%	0.40%	0.00%		0.00%
Mesa	28	1	4	17.86%	\$6,427	\$61	0.95%	3.34%	0.67%	\$51	1.74%
Mineral	1	0		0.00%	\$189	\$0	0.00%	0.01%	0.00%		0.00%
Moffat	1	1		100.00%	\$545	\$41	7.52%	0.31%	0.45%		7.52%
Montezuma	8	0	1	12.50%	\$2,642	\$0	0.00%	0.65%	0.00%	\$31	1.17%
Montrose	8	0	1	12.50%	\$1,665	\$0	0.00%	1.13%	0.00%	\$11	0.66%
Morgan	5	1		20.00%	\$742	\$49	6.60%	0.49%	0.54%		6.60%
Otero	12	1		8.33%	\$2,542	\$89	3.50%	0.78%	0.97%		3.50%

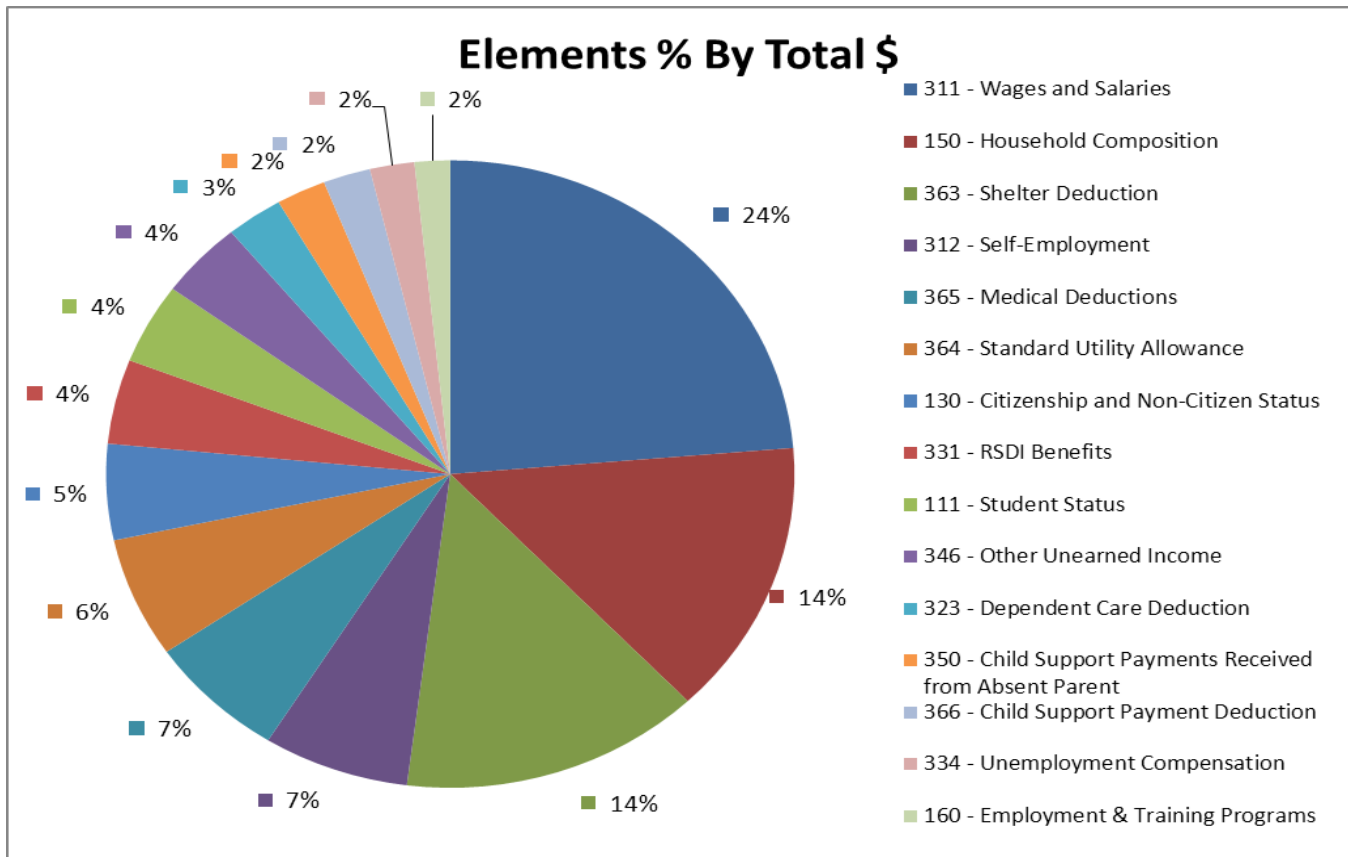
FFY 2014 SNAP Payment Error Rates Continued

County	Completed Reviews	Above	Below	Case Error Rate	TOTAL SAMPLED ALLOTMENT	DOLLARS IN ERROR	Above Error Rate	% of State Caseload	% of State PER	Below Threshold \$ Errors	TOTAL ERROR RATE
Ouray	2	0		0.00%	\$250	\$0	0.00%	0.07%	0.00%		0.00%
Park	2	0	1	50.00%	\$650	\$0	0.00%	0.28%	0.00%	\$14	2.15%
Phillips	2	1		50.00%	\$439	\$235	53.53%	0.08%	2.57%		53.53%
Pitkin	2	1		50.00%	\$60	\$45	75.00%	0.06%	0.49%		75.00%
Prowers	9	1	1	22.22%	\$1,812	\$69	3.81%	0.52%	0.75%	\$16	4.69%
Pueblo	54	5	6	20.37%	\$14,812	\$408	2.75%	7.32%	4.46%	\$100	3.43%
Rio Blanco	0	0		#DIV/0!	\$0	\$0	#DIV/0!	0.10%	0.00%		#DIV/0!
Rio Grande	1	0		0.00%	\$180	\$0	0.00%	0.45%	0.00%		0.00%
Routt	3	0		0.00%	\$964	\$0	0.00%	0.26%	0.00%		0.00%
Saguache	2	1	1	100.00%	\$703	\$88	12.52%	0.31%	0.96%	\$8	13.66%
San Juan	0	0		#DIV/0!	\$0	\$0	#DIV/0!	0.02%	0.00%		#DIV/0!
San Miguel	0	0		#DIV/0!	\$0	\$0	#DIV/0!	0.09%	0.00%		#DIV/0!
Sedgwick	0	0		#DIV/0!	\$0	\$0	#DIV/0!	0.05%	0.00%		#DIV/0!
Summit	0	0		#DIV/0!	\$0	\$0	#DIV/0!	0.21%	0.00%		#DIV/0!
Teller	1	0	1	100.00%	\$379	\$0	0.00%	0.48%	0.00%	\$34	8.97%
Washington	1	0		0.00%	\$47	\$0	0.00%	0.15%	0.00%		0.00%
Weld	35	4	8	34.29%	\$8,768	\$371	4.23%	4.26%	4.06%	\$127	5.68%
Yuma	1	0		0.00%	\$265	\$0	0.00%	0.18%	0.00%		0.00%
TOTAL	790	89	116	25.95%	\$215,071	\$9,143	4.25%	100.00%	100.00%	\$1,835	5.10%

It is critical that counties with a payment error rate in excess of 3% take measures to reduce the payment error rate in the county in order to ensure payment accuracy as incorrect benefits have a negative impact on the households served and cause unnecessary hardship on these households with either providing less benefits that are much needed or claims in addition to additional workload for county workers.

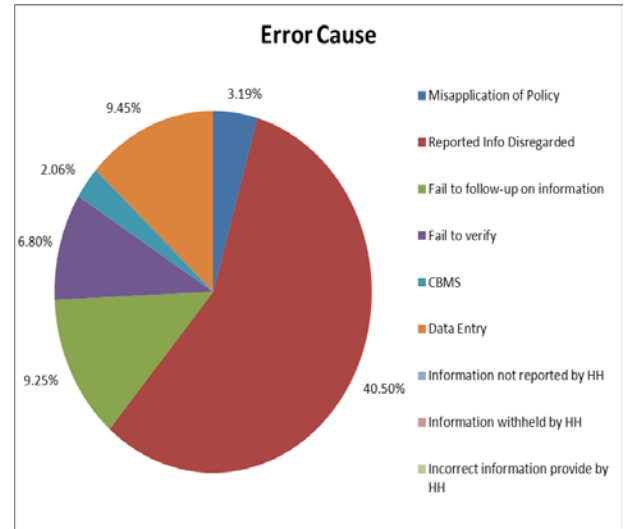
FFY 2014 SNAP Payment Error Rates Trends

Error Elements	Error Dollars	Percent By Total	Error Cases	Percent By Total
311 - Wages and Salaries	\$2,129	23.29%	19	21.35%
150 - Household Composition	\$1,277	13.97%	12	13.48%
363 - Shelter Deduction	\$1,272	13.91%	15	16.85%
312 - Self-Employment	\$617	6.75%	4	4.49%
365 - Medical Deductions	\$588	6.43%	5	5.62%
364 - Standard Utility Allowance	\$557	6.09%	7	7.87%
130 - Citizenship and Non-Citizen Status	\$444	4.86%	2	2.25%
331 - RSDI Benefits	\$392	4.29%	3	3.37%
111 - Student Status	\$373	4.08%	3	3.37%
346 - Other Unearned Income	\$356	3.89%	3	3.37%
323 - Dependent Care Deduction	\$240	2.62%	3	3.37%
350 - Child Support Payments Received from Absent Parent	\$210	2.30%	3	3.37%
366 - Child Support Payment Deduction	\$200	2.19%	3	3.37%
334 - Unemployment Compensation	\$188	2.06%	3	3.37%
160 - Employment & Training Programs	\$150	1.64%	1	1.12%
344 - TANF, PA, or GA	\$64	0.70%	1	1.12%
314 - Other Earned Income	\$45	0.49%	1	1.12%
342 - Contributions	\$41	0.45%	1	1.12%
Totals	\$9,143	100.00%	89	100.00%

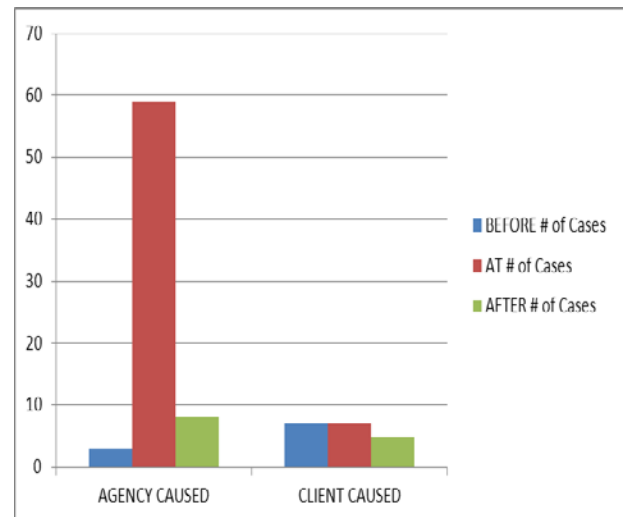


FFY 2014 SNAP Payment Error Rates Trends

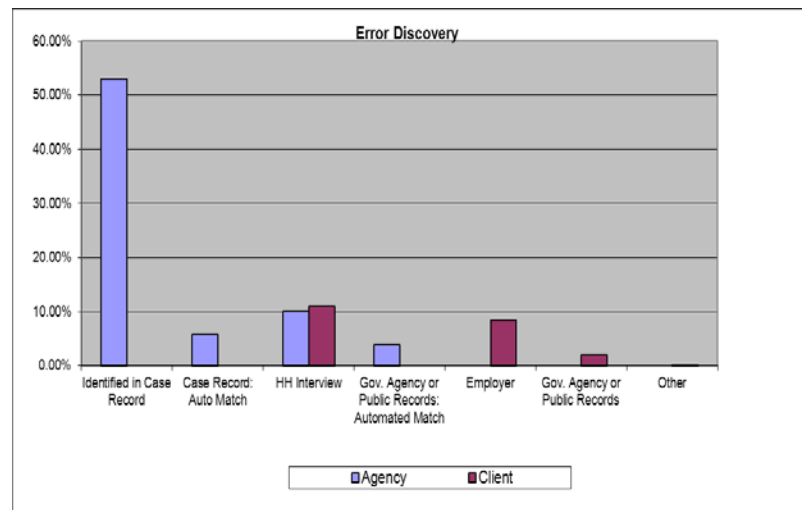
CAUSE	Agency	Client
Misapplication of Policy	3.19%	
Reported Info Disregarded	40.50%	
Fail to follow-up on information	9.25%	
Fail to verify	6.80%	
CBMS	2.06%	
Data Entry	9.45%	
Information not reported by HH		13.98%
Information withheld by HH		1.51%
Incorrect information provide by HH		6.53%



Most Recent Action	BEFORE	AT	AFTER
	# of Cases	# of Cases	# of Cases
AGENCY CAUSED	3	59	8
CLIENT CAUSED	7	7	5
Grand Total	10	66	13



Error Discovered	Agency	Client
Identified in Case Record	52.90%	0.00%
Case Record: Auto Match	5.72%	0.00%
HH Interview	10.01%	10.99%
Gov. Agency or Public Records: Automated Match	3.97%	
Employer		8.47%
Gov. Agency or Public Records		2.07%
Other		0.16%



FFY 2014 SNAPQA Above Threshold Case Review by \$

Above Threshold Errors by dollars* (errors used by federal office to determine fiscal penalties):

County	Income							Deductions					Other			TOTAL	
	Earned \$	Child Support \$	RSDI \$	SSI \$	PA	UIB \$	Other \$	Child Support	Child Care	Medical	Shelter	Utilities	HH Comp	Student Status	Other	Agency	Client
Adams																	
Agency	\$289									\$98		\$139	\$160			\$686	
Client												\$179					\$179
Arapahoe																	
Agency	\$299					\$45		\$116		\$60	\$111	\$40				\$671	
Client										\$108							\$108
Boulder																	
Agency										\$82						\$82	
Client										\$87							\$87
Denver																	
Agency	\$364	\$88	\$174						\$67	\$435	\$355	\$395		\$120		\$1,998	
Client	\$189						\$189					\$127					\$505
El Paso																	
Agency	\$491	\$72	\$64			\$82	\$47			\$92	\$57	\$70		\$554		\$1,529	
Client	\$95						\$41			\$48							\$184
Jefferson																	
Agency	\$38									\$87						\$125	
Client	\$15									\$90				\$78			\$183
Larimer																	
Agency						\$61						\$135	\$135			\$331	
Client	\$189																\$189
Mesa																	
Agency																\$0	
Client																	\$0
Pueblo																	
Agency	\$223									\$40	\$50	\$95				\$408	
Client																	\$0
Weld																	
Agency	\$106							\$45		\$174	\$46					\$371	
Client																	\$0
Big 10 Total	\$2,298	\$160	\$238	\$0	\$0	\$188	\$277	\$161	\$67	\$353	\$1,151	\$516	\$1,180	\$373	\$674	\$6,201	\$1,435
BIG 10 Grand	\$7,636																
All Others																	
Agency	\$493		\$154		\$64			\$89	\$173	\$235	\$121	\$41	\$49			\$1,419	
Client													\$88				\$88
All Others	\$493	\$0	\$154	\$0	\$64	\$0	\$0	\$89	\$173	\$235	\$121	\$41	\$137	\$0	\$0	\$0	\$1,507
Statewide	\$2,791	\$160	\$392	\$0	\$64	\$188	\$277	\$250	\$240	\$588	\$1,272	\$557	\$1,317	\$373	\$674	\$6,201	\$2,942
TOTAL	\$9,143																

FFY 2014 SNAPQA Element Trend by Sample Month

	Oct-13	Nov-13	Dec-13	Jan-14	Feb-14	Mar-14	Apr-14	May-14	Jun-14	Jul-14	Aug-14	Sep-14	FFY 2014
Completed Reviews	81	75	83	81	72	78	79	77	83	81			790
Above Errors #	11	12	9	6	5	6	8	13	13	6			89
Sampled \$	\$24,241	\$20,668	\$22,147	\$24,763	\$22,008	\$21,215	\$18,218	\$19,194	\$23,398	\$19,219			\$215,071
Above Errors \$	\$1,524	\$1,363	\$889	\$388	\$691	\$616	\$658	\$1,084	\$1,359	\$571			\$9,143
Average Allotment Size of Error Cases		\$321.25								\$209			\$530
Average Error Amount	\$138.55	\$113.58	\$98.78	\$64.67	\$138.20	\$102.67	\$82.25	\$83	\$105	\$95			\$103
ELEMENTS	Oct-13	Nov-13	Dec-13	Jan-14	Feb-14	Mar-14	Apr-14	May-14	Jun-14	Jul-14	Aug-14	Sep-14	FFY 2014
Wages #	1	2	2	3		3		5	4	3			23
Wages \$	\$421	\$190	\$264	\$252		\$376		\$605	\$399	\$239			\$2,746
Standard Utility Allowance #	1		3			1		1		1			7
Standard Utility Allowance\$	\$41		\$299			\$118		\$49		\$50			\$557
Shelter #	2	2	1	2		1	1	2	3	1			15
Shelter \$	\$167	\$310	\$87	\$91		\$82	\$57	\$100	\$270	\$108			\$1,272
UIB #	1			1				1					3
UIB \$	\$82			\$45				\$61					\$188
Child Support Income #	1	1					1	1					4
Child Support Income \$	\$72	\$88					\$89	\$50					\$299
SSI #													0
SSI \$													\$0
RSDI #		1							2				3
RSDI \$		\$64							\$328				\$392
Public Assistance #								1					1
Public Assistance \$								\$64					\$64
Other Unearned Income #	1	1			1		1		1				5
Other Unearned Income \$	\$41	\$120			\$189		\$45		\$47				\$442
Citizenship #	1					1							2
Citizenship \$	\$404					\$40							\$444
Medical Expenses #		2					1		1	1			5
Medical Expenses \$		\$280					\$47		\$87	\$174			\$588
Child Care Expense #			2					1					3
Child Care Expense \$			\$173					\$67					\$240
Child Support Expense #	\$1		\$1										2
Child Support Expense \$	\$45		\$66										\$111
Education Loan #													0
Education Loan \$													\$0
Student Status #					1		1		1				3
Student Status \$					\$135		\$160		\$78				\$373
HH Composition #	2	3			3		3	1					12
HH Composition \$	\$251	\$311			\$367		\$260	\$88					\$1,277
Proration Error #													0
Proration Error \$													\$0
Disqualified Recipient #													0
Disqualified Recipient \$													\$0
Employment and Training #									1				1
Employment and Training \$									\$150				\$150
TOTAL #	11	12	9	6	5	6	8	13	13	6	0	0	89
Total \$	\$1,524	\$1,363	\$889	\$388	\$691	\$616	\$658	\$1,084	\$1,359	\$571	\$0	\$0	\$9,143

FY 2014 SNAP Case & Procedural Case Review

(October and July 2014)

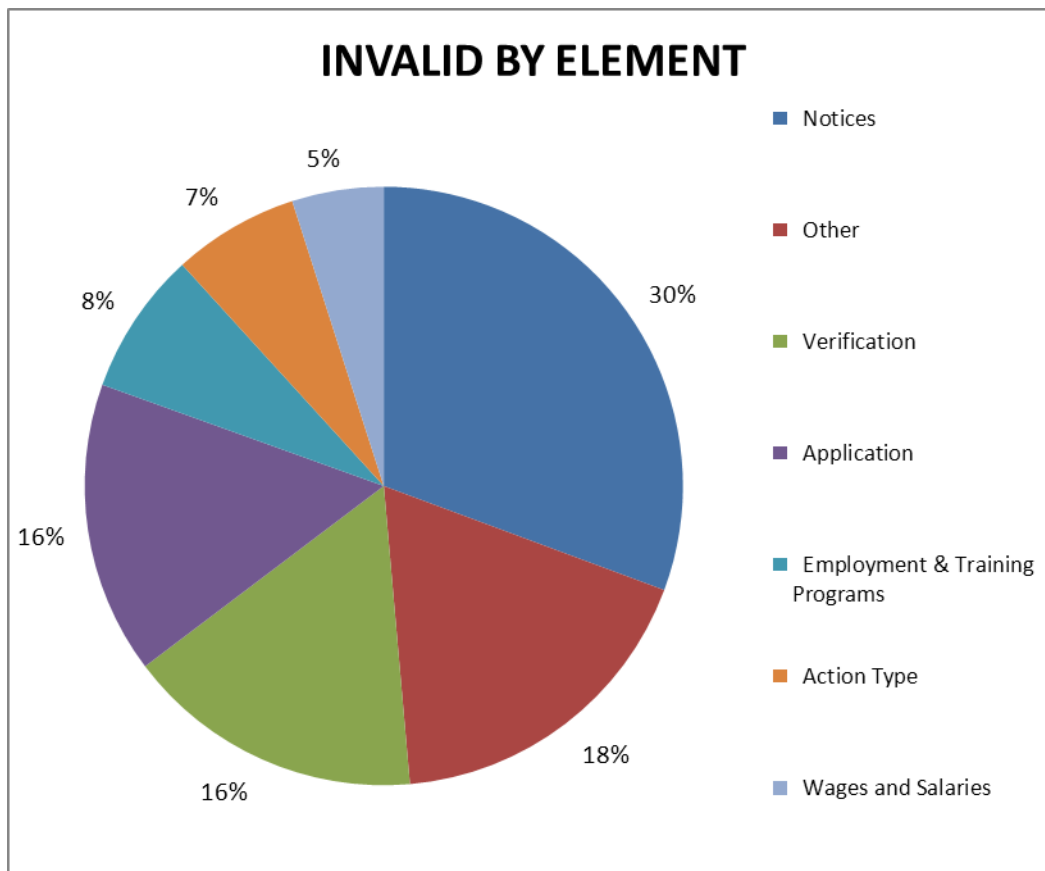
Goal = 25%

County	Complete	Errors	Neg Case Error Rate
Adams	55	31	56.36%
Alamosa	5	3	60.00%
Arapahoe	71	33	46.48%
Archuleta			#DIV/0!
Baca			
Bent	2	2	100.00%
Boulder	26	7	26.92%
Broomfield	2	1	50.00%
Chaffee			#DIV/0!
Cheyenne	1	0	
Clear Creek			
Conejos	2	2	100.00%
Costilla			#DIV/0!
Crowley			
Custer			
Delta	8	4	50.00%
Denver	97	68	70.10%
Dolores	1	1	
Douglas	3	2	66.67%
Eagle			#DIV/0!
El Paso	109	59	54.13%
Elbert			#DIV/0!
Fremont	11	5	45.45%
Garfield	8	6	75.00%
Gilpin	1	1	100.00%
Grand	2	0	0.00%
Gunnison			#DIV/0!
Hinsdale			
Huerfano			
Jackson			
Jefferson	44	27	61.36%
Kiowa			
Kit Carson	1	1	100.00%
Lake			
La Plata	8	1	12.50%
Larimer	35	18	51.43%
Las Animas	4		0.00%
Lincoln			
Logan	3	2	66.67%
Mesa	23	14	60.87%
Mineral			
Moffat	4	2	50.00%
Montezuma	1	0	0.00%
Montrose	7	5	71.43%
Morgan	6	2	33.33%
Otero	3	2	66.67%

County	Complete	Errors	Neg Case Error Rate	CBMS/NOAA Errors	County Error Rate
Ouray	1	1		1	
Park	1	0	0.00%	0	
Phillips	1	0	0.00%		
Pitkin					
Prowers	2	2	100.00%	0	100.00%
Pueblo	32	17	53.13%	8	28.13%
Rio Blanco	1	1	100.00%	0	100.00%
Rio Grande	3	2	66.67%	0	66.67%
Routt	3	2	66.67%	0	66.67%
Saguache	2	2	100.00%	0	100.00%
San Juan					
San Miguel	1	1	100.00%		
Sedgwick			#DIV/0!		#DIV/0!
Summit	1	1	100.00%	0	100.00%
Teller	3	1	33.33%	0	33.33%
Washington					
Weld	37	14	37.84%	7	18.92%
Yuma			#DIV/0!		#DIV/0!
TOTAL	631	343	54.36%	124	34.71%
State Responsibility		36.15%			
County Responsibility		63.85%			

FY 2014 SNAP Case & Procedural Case Review By Element Ranking

ELEMENTS	DENIALS		TERMINATIONS		INVALID	PERCENT
Notices	37	10.79%	62	18.08%	99	28.86%
Other	28	8.16%	30	8.75%	58	16.91%
Verification	39	11.37%	13	3.79%	52	15.16%
Application	50	14.58%	1	0.29%	51	14.87%
Employment & Training Programs	6	1.75%	19	5.54%	25	7.29%
Action Type	4	1.17%	18	5.25%	22	6.41%
Wages and Salaries	10	2.92%	6	1.75%	16	4.66%
Household Composition	2	0.58%	2	0.58%	4	1.17%
Residency	1	0.29%	2	0.58%	3	0.87%
Unemployment Compensation	2	0.58%	0	0.00%	2	0.58%
SSI and/or State SSI Supplement	1	0.29%	1	0.29%	2	0.58%
RSDI Benefits	1	0.29%	1	0.29%	2	0.58%
Self-Employment	2	0.58%	0	0.00%	2	0.58%
Medical Deductions	1	0.29%	0	0.00%	1	0.29%
Child Support Payments Received fr	0	0.00%	1	0.29%	1	0.29%
Work Registration	0	0.00%	1	0.29%	1	0.29%
Citizenship and NonCitizen Status	0	0.00%	1	0.29%	1	0.29%
Student Status	1	0.29%	0	0.00%	1	0.29%
Total	185	53.94%	158	46.06%	343	100.00%



FFY 2014 SNAPQA Case & Procedural Errors by Element and Month

	Oct-12	Nov-12	Dec-12	Jan-13	Feb-13	Mar-13	Apr-13	May-13	Jun-13	Jul-13	Aug-13	Sep-13	FFY 13 YTD
Completed Reviews	72	54	59	59	54	60	77	62	63	71			631
Invalid #	42	30	29	29	25	27	36	28	46	51			343
CAPER Rate	58.33%	55.56%	49.15%	49.15%	46.30%	45.00%	46.75%	45.16%	73.02%	71.83%	#DIV/0!	#DIV/0!	54.36%
ELEMENTS													
Other	12	6	4	3	2	7	7	6	6	5			58
Verification	6	8	3	4	7	2	6	5	6	5			52
Notices	9	5	4	7	3	6	10	9	20	26			99
Application	3	5	7	10	5	3	5	4	6	3			51
Wages	2	1	3	1	2	2	2	2	1				16
Employment & Training	4	1	2	1	2	2	4		4	5			25
Action Type	4	2	5	1	2	3		1		4			22
HH Composition					1				1	2			4
Child Support Income									1				1
Child Support Deduction													0
UIB	1					1							2
Residency		1		1				1					3
Student Status							1						1
Self-Employment			1			1							2
Work Registration										1			1
Shelter													0
Standard Utility Allowance													0
Unearned Income													0
Public Assistance													0
Resources													0
RSDI	1				1								2
Citizenship									1				1
SSI		1		1									2
Medical Deductions							1						
TOTAL	42	30	29	29	25	27	36	28	46	51	0	0	343

Other: includes CBMS errors, Data Entry, misapplication of policy, and misuse of CBMS.
Action Type: Periodic Reports not acted on timely.

FFY 2014 SNAPQA Case & Procedural Errors by Causes

ERROR CAUSES	# Cases	% Cases
Policy incorrectly applied	61	17.78%
Notice not clearly understandable	56	16.33%
Data entry and/or coding error (includes selection of incorrect codes)	27	7.87%
Improper Denial/Termination - failure to provide - verification was received or is in case file	23	6.71%
Failed to send notice of action	20	5.83%
Computer programming error	16	4.66%
Late denial agency failed to process the application timely	16	4.66%
Notice reason does not match reason for action	15	4.37%
Improper termination or suspension for failure to meet reporting requirements	13	3.79%
Failed to process the reapplication timely (recertification application)	13	3.79%
Agency failed to follow up on known and reported impending changes	10	2.92%
Improper denial prior to end of timeframe for providing verification	9	2.62%
Income from known/processed source included that should not have been	7	2.04%
Individual inappropriately sanctioned	7	2.04%
Failed to issue a required Notice of Missed Interview (NOMI)	5	1.46%
Verification of income requested for a person not associated with current application	5	1.46%
Improper denial within 30-day period for missing interview(s)	5	1.46%
Agency failed to follow up on inconsistent or incomplete information	4	1.17%
Computer user error (Improper use of system or unauthorized process or work around)	4	1.17%
Improper Denial/Termination - failure to provide - household never notified of needed verification	4	1.17%
Failed to consider or incorrectly considered reported information	2	0.58%
Improper income calculation	2	0.58%
Notice did not include date of intended action	2	0.58%
Notice was not complete	2	0.58%
Household not notified of requirement to register with work program	2	0.58%
Improper denial - failed to screen for expedited service	1	0.29%
Improper denial or termination, not out of the project area	1	0.29%
Improper Denial/Termination - failure to provide - failed to send a request for contact	1	0.29%
Improper Denial/Termination - failure to provide - for verification requested for another program	1	0.29%
Eligible person(s) disqualified	1	0.29%
Eligible person(s) with deductible expenses excluded	1	0.29%
Eligible qualified alien excluded - LPR with living in US 5 years	1	0.29%
Failed to consider or incorrectly considered Eligible Student status	1	0.29%
Failed to consider or incorrectly considered Medical deductions	1	0.29%
Notice was sent to wrong address	1	0.29%
Other	1	0.29%
Verification was in case file	1	0.29%
Improper Denial/Termination - failure to provide - household not given at least 10 days to provide	1	0.29%
TOTAL	343	100%