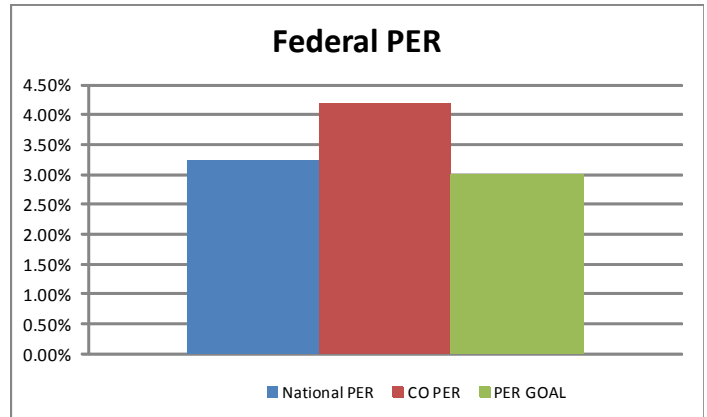


**COLORADO SNAP QUALITY CONTROL
MONTHLY SUMMARY REPORT
FEDERAL FISCAL YEAR 2014
(October – May 2014)**

COLORADO PAYMENT ERROR RATES (PER)*:

PER FFY 2014	
National PER	3.25%
CO PER	4.19%
PER GOAL	3.00%

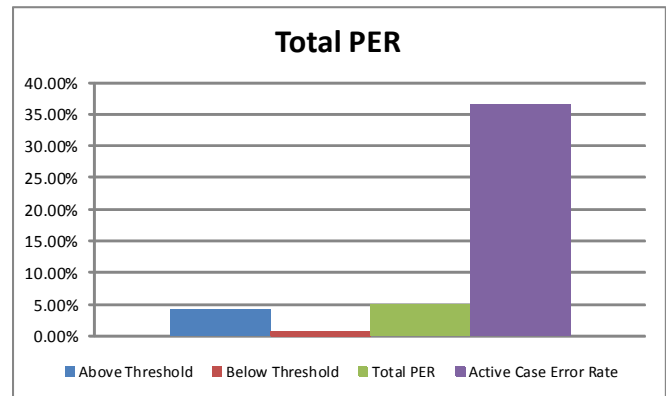
*This represents the PER that the federal office uses to determine fiscal penalties and is compared to other state PERs.



STATEWIDE TOTAL PER AND CASE ERROR RATES**:

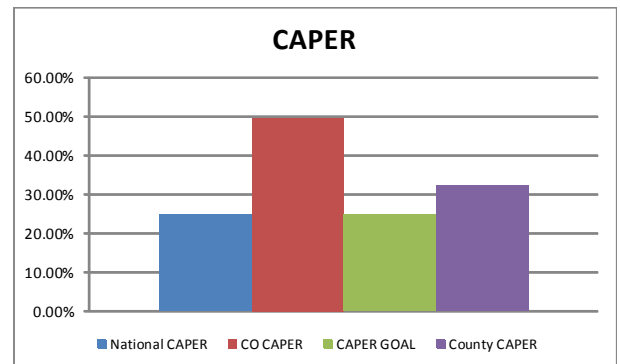
FFY 2014 Total PER	
Above Threshold	4.19%
Below Threshold	0.76%
Total PER	4.95%
Active Case Error Rate	36.58%

**This represents all payment errors regardless of the dollar amount and all active cases with a dollar error.



COLORADO CASE AND PROCEDURAL ERROR RATE (CAPER):

CAPER FFY 2014	
National CAPER	25.07%
CO CAPER	49.50%
CAPER GOAL	25.00%
County CAPER	32.19%



FFY 2014 SNAP Payment Error Rates

Red = exceeds goal

Blue = largest contributors to PER

County	Completed Reviews	Threshold			Used by FNS for Penalties			% of State Caseload	% of State PER	Below Threshold \$ Errors	TOTAL ERROR RATE
		Above	Below	Case Error Rate	TOTAL SAMPLED ALLOTMENT	DOLLARS IN ERROR	Above Error Rate				
Adams	63	6	11	26.98%	\$20,116	\$767	3.81%	9.63%	10.63%	\$190	4.76%
Alamosa	8	0	1	12.50%	\$1,801	\$0	0.00%	0.88%	0.00%	\$4	0.22%
Arapahoe	62	8	5	20.97%	\$17,947	\$671	3.74%	9.90%	9.30%	\$77	4.17%
Archuleta	1	0		0.00%	\$189	\$0	0.00%	0.22%	0.00%		0.00%
Baca	0	0		#DIV/0!	\$0	\$0	#DIV/0!	0.08%	0.00%		#DIV/0!
Bent	0	0		#DIV/0!	\$0	\$0	#DIV/0!	0.21%	0.00%		#DIV/0!
Boulder	22	2	2	18.18%	\$6,867	\$169	2.46%	3.47%	2.34%	\$48	3.16%
Broomfield				#DIV/0!			#DIV/0!	0.40%	0.00%		#DIV/0!
Chaffee	3	0		0.00%	\$682	\$0	0.00%	0.32%	0.00%		0.00%
Cheyenne	0	0		#DIV/0!	\$0	\$0	#DIV/0!	0.03%	0.00%		#DIV/0!
Clear Creek	2	1		50.00%	\$305	\$64	20.98%	0.15%	0.89%		20.98%
Conejos	3	0		0.00%	\$369	\$0	0.00%	0.38%	0.00%		0.00%
Costilla	2	0		0.00%	\$616	\$0	0.00%	0.26%	0.00%		0.00%
Crowley	0	0		#DIV/0!	\$0	\$0	#DIV/0!	0.16%	0.00%		#DIV/0!
Custer	2	0	1	50.00%	\$831	\$0	0.00%	0.09%	0.00%	\$1	0.12%
Delta	8	0	3	37.50%	\$1,871	\$0	0.00%	0.85%	0.00%	\$66	3.53%
Denver	108	18	20	35.19%	\$30,359	\$2,013	6.63%	19.00%	27.91%	\$303	7.63%
Dolores	1	0		0.00%	\$610	\$0	0.00%	0.03%	0.00%		0.00%
Douglas	11	3		27.27%	\$4,256	\$304	7.14%	1.19%	4.21%		7.14%
Eagle	0	0		#DIV/0!	\$0	\$0	#DIV/0!	0.30%	0.00%		#DIV/0!
Elbert	0	0		#DIV/0!	\$0	\$0	#DIV/0!	0.19%	0.00%		#DIV/0!
El Paso	86	11	12	26.74%	\$26,332	\$1,351	5.13%	14.04%	18.73%	\$158	5.73%
Fremont	10	2		20.00%	\$2,073	\$169	8.15%	1.14%	2.34%		8.15%
Garfield	8	1		12.50%	\$2,469	\$68	2.75%	0.96%	0.94%		2.75%
Gilpin	1	0		0.00%	\$589	\$0	0.00%	0.11%	0.00%		0.00%
Grand	1	0		0.00%	\$189	\$0	0.00%	0.12%	0.00%		0.00%
Gunnison	1	0		0.00%	\$489	\$0	0.00%	0.21%	0.00%		0.00%
Hinsdale	0	0		#DIV/0!	\$0	\$0	#DIV/0!	0.01%	0.00%		#DIV/0!
Huerfano	3	0		0.00%	\$1,044	\$0	0.00%	0.38%	0.00%		0.00%
Jackson	0	0		#DIV/0!	\$0	\$0	#DIV/0!	0.03%	0.00%		#DIV/0!
Jefferson	37	1	7	21.62%	\$6,326	\$15	0.24%	6.73%	0.21%	\$75	1.42%
Kiowa	0	0		#DIV/0!	\$0	\$0	#DIV/0!	0.04%	0.00%		#DIV/0!
Kit Carson	0	0		#DIV/0!	\$0	\$0	#DIV/0!	0.12%	0.00%		#DIV/0!
Lake	1	0		0.00%	\$200	\$0	0.00%	0.13%	0.00%		0.00%
La Plata	6	0	2	33.33%	\$1,662	\$0	0.00%	0.78%	0.00%	\$43	2.59%
Larimer	28	3	6	32.14%	\$7,121	\$459	6.45%	4.81%	6.36%	\$47	7.11%
Las Animas	3	0	1	33.33%	\$604	\$0	0.00%	0.65%	0.00%	\$6	0.99%
Lincoln	0	0		#DIV/0!	\$0	\$0	#DIV/0!	0.10%	0.00%		#DIV/0!
Logan	4	0		0.00%	\$825	\$0	0.00%	0.40%	0.00%		0.00%
Mesa	20	1	2	15.00%	\$4,748	\$61	1.28%	3.34%	0.85%	\$43	2.19%
Mineral	1	0		0.00%	\$189	\$0	0.00%	0.01%	0.00%		0.00%
Moffat	1	1		100.00%	\$545	\$41	7.52%	0.31%	0.57%		7.52%
Montezuma	7	0	1	14.29%	\$2,311	\$0	0.00%	0.65%	0.00%	\$31	1.34%
Montrose	8	0	1	12.50%	\$1,665	\$0	0.00%	1.13%	0.00%	\$11	0.66%
Morgan	5	1		20.00%	\$742	\$49	6.60%	0.49%	0.68%		6.60%
Otero	10	1		10.00%	\$2,148	\$89	4.14%	0.78%	1.23%		4.14%

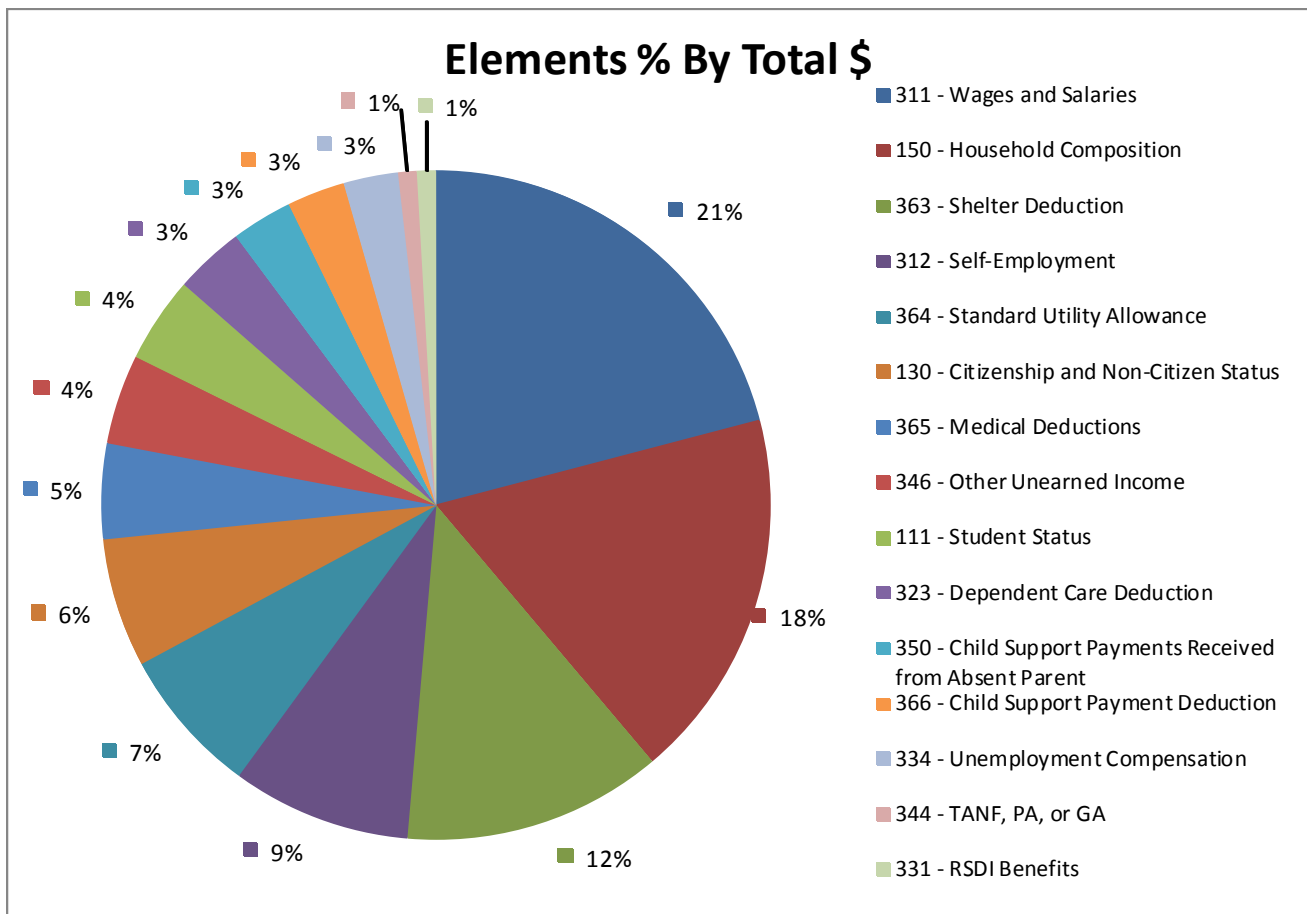
FFY 2014 SNAP Payment Error Rates Continued

County	Completed Reviews	Above	Below	Case Error Rate	TOTAL SAMPLED ALLOTMENT	DOLLARS IN ERROR	Above Error Rate	% of State Caseload	% of State PER	Below Threshold \$ Errors	TOTAL ERROR RATE
Ouray	2	0		0.00%	\$250	\$0	0.00%	0.07%	0.00%		0.00%
Park	2	0	1	50.00%	\$650	\$0	0.00%	0.28%	0.00%	\$14	2.15%
Phillips	2	1		50.00%	\$439	\$235	53.53%	0.08%	3.26%		53.53%
Pitkin	2	1		50.00%	\$60	\$45	75.00%	0.06%	0.62%		75.00%
Prowers	4	0	1	25.00%	\$776	\$0	0.00%	0.52%	0.00%	\$16	2.06%
Pueblo	42	4	5	21.43%	\$11,953	\$358	3.00%	7.32%	4.96%	\$66	3.55%
Rio Blanco	0	0		#DIV/0!	\$0	\$0	#DIV/0!	0.10%	0.00%		#DIV/0!
Rio Grande	0	0		#DIV/0!	\$0	\$0	#DIV/0!	0.45%	0.00%		#DIV/0!
Routt	3	0		0.00%	\$964	\$0	0.00%	0.26%	0.00%		0.00%
Saguache	1	1		100.00%	\$522	\$88	16.86%	0.31%	1.22%		16.86%
San Juan	0	0		#DIV/0!	\$0	\$0	#DIV/0!	0.02%	0.00%		#DIV/0!
San Miguel	0	0		#DIV/0!	\$0	\$0	#DIV/0!	0.09%	0.00%		#DIV/0!
Sedgwick	0	0		#DIV/0!	\$0	\$0	#DIV/0!	0.05%	0.00%		#DIV/0!
Summit	0	0		#DIV/0!	\$0	\$0	#DIV/0!	0.21%	0.00%		#DIV/0!
Teller	1	0	1	100.00%	\$379	\$0	0.00%	0.48%	0.00%	\$34	8.97%
Washington	1	0		0.00%	\$47	\$0	0.00%	0.15%	0.00%		0.00%
Weld	28	3	6	32.14%	\$7,116	\$197	2.77%	4.26%	2.73%	\$74	3.81%
Yuma	0	0		#DIV/0!	\$0	\$0	#DIV/0!	0.18%	0.00%		#DIV/0!
TOTAL	625	70	89	25.44%	\$172,246	\$7,213	4.19%	100.00%	100.00%	\$1,307	4.95%

It is critical that counties with a payment error rate in excess of 3% take measures to reduce the payment error rate in the county in order to ensure payment accuracy as incorrect benefits have a negative impact on the households served and cause unnecessary hardship on these households with either providing less benefits that are much needed or claims in addition to additional workload for county workers.

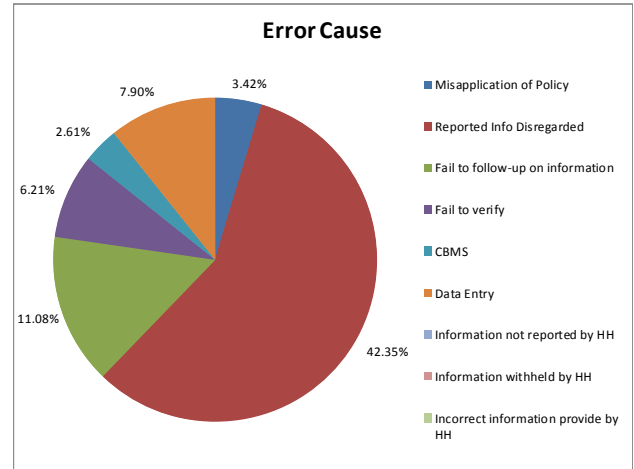
FFY 2014 SNAP Payment Error Rates Trends

Error Elements	Error Dollars	Percent By Total	Error Cases	Percent By Total
311 - Wages and Salaries	\$1,491	20.67%	12	17.14%
150 - Household Composition	\$1,277	17.70%	12	17.14%
363 - Shelter Deduction	\$894	12.39%	11	15.71%
312 - Self-Employment	\$617	8.55%	4	5.71%
364 - Standard Utility Allowance	\$507	7.03%	6	8.57%
130 - Citizenship and Non-Citizen Status	\$444	6.16%	2	2.86%
365 - Medical Deductions	\$327	4.53%	3	4.29%
346 - Other Unearned Income	\$309	4.28%	2	2.86%
111 - Student Status	\$295	4.09%	2	2.86%
323 - Dependent Care Deduction	\$240	3.33%	3	4.29%
350 - Child Support Payments Received from Absent Parent	\$210	2.91%	3	4.29%
366 - Child Support Payment Deduction	\$200	2.77%	3	4.29%
334 - Unemployment Compensation	\$188	2.61%	3	4.29%
344 - TANF, PA, or GA	\$64	0.89%	1	1.43%
331 - RSDI Benefits	\$64	0.89%	1	1.43%
314 - Other Earned Income	\$45	0.62%	1	1.43%
342 - Contributions	\$41	0.57%	1	1.43%
Totals	\$7,213	100.00%	70	100.00%

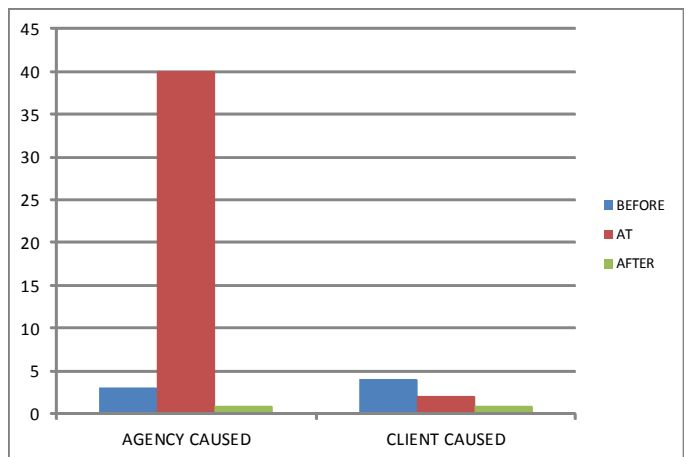


FFY 2014 SNAP Payment Error Rates Trends

CAUSE	Agency	Client
Misapplication of Policy	3.42%	
Reported Info Disregarded	42.35%	
Fail to follow-up on information	11.08%	
Fail to verify	6.21%	
CBMS	2.61%	
Data Entry	7.90%	
Information not reported by HH		11.62%
Information withheld by HH		1.91%
Incorrect information provide by HH		8.28%

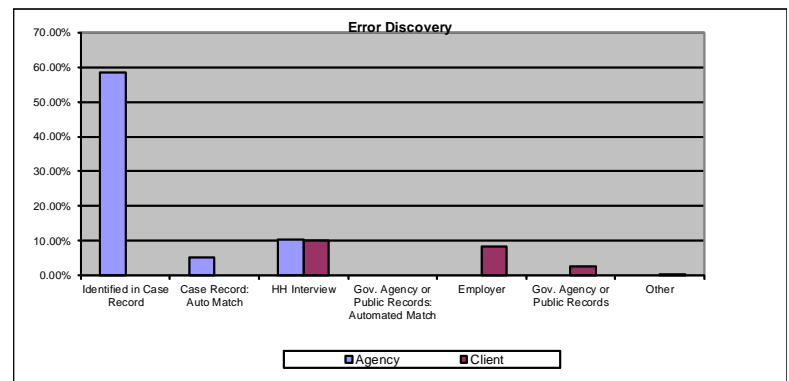


Most Recent Action	BEFORE	AT	AFTER	Total
	# of Cases	# of Cases	# of Cases	
AGENCY CAUSED				
Application		14		14
PR		2		2
RRR	3	24	1	28
Subtotal	3	40	1	44
CLIENT CAUSED				
Application		1		1
PR				
RRR	4	1	1	6
Subtotal	4	2	1	7
Grand Total	7	42	2	51



(note: includes all researched cases)

Error Discovered	Agency	Client
Identified in Case Record	58.44%	0.00%
Case Record: Auto Match	5.12%	0.00%
HH Interview	10.27%	10.11%
Gov. Agency or Public Records: Automated Match	0.00%	
Employer		8.46%
Gov. Agency or Public Records		2.62%
Other		0.21%



FFY 2014 SNAPQA Above Threshold Case Review by \$

Above Threshold Errors by dollars* (errors used by federal office to determine fiscal penalties):

County	Income							Deductions					Other			TOTAL	
	Earned \$	Child Support \$	RSDI \$	SSI \$	PA	UIB \$	Other \$	Child Support	Child Care	Medical	Shelter	Utilities	HH Comp	Student Status	Other	Agency	Client
Adams																	
Agency	\$289												\$139	\$160		\$588	
Client													\$179				\$179
Arapahoe																	
Agency	\$299					\$45		\$116			\$60	\$111	\$40			\$671	
Client																	\$0
Boulder																	
Agency											\$82					\$82	
Client											\$87						\$87
Denver																	
Agency	\$130	\$88							\$67		\$353	\$355	\$395		\$120	\$1,508	
Client	\$189						\$189						\$127				\$505
El Paso																	
Agency	\$421	\$72	\$64			\$82				\$92	\$57		\$70		\$404	\$1,262	
Client							\$41				\$48						\$89
Jefferson																	
Agency																\$0	
Client	\$15																\$15
Larimer																	
Agency						\$61							\$135	\$135		\$331	
Client	\$189																\$189
Mesa																	
Agency																\$0	
Client																	\$0
Pueblo																	
Agency	\$223										\$40		\$95			\$358	
Client																	\$0
Weld																	
Agency	\$106							\$45			\$46					\$197	
Client																	\$0
Big 10 Total	\$1,861	\$160	\$64	\$0	\$0	\$188	\$230	\$161	\$67	\$92	\$773	\$466	\$1,180	\$295	\$524	\$4,997	\$1,064
BIG 10 Grand	\$6,061																
All Others																	
Agency	\$292				\$64			\$89	\$173	\$235	\$121	\$41	\$49			\$1,064	
Client													\$88				\$88
All Others	\$292	\$0	\$0	\$0	\$64	\$0	\$0	\$89	\$173	\$235	\$121	\$41	\$137	\$0	\$0	\$0	\$1,152
Statewide	\$2,153	\$160	\$64	\$0	\$64	\$188	\$230	\$250	\$240	\$327	\$894	\$507	\$1,317	\$295	\$524	\$4,997	\$2,216
TOTAL	\$7,213																

*Includes all researched cases.

FFY 2014 SNAPQA Element Trend by Sample Month

	Oct-13	Nov-13	Dec-13	Jan-14	Feb-14	Mar-14	Apr-14	May-14	Jun-14	Jul-14	Aug-14	Sep-14	FFY 2014
Completed Reviews	81	75	83	81	72	78	79	77	0				626
Above Errors #	11	12	9	6	5	6	8	13	0				70
Sampled \$	\$24,241	\$20,668	\$22,147	\$24,763	\$22,008	\$21,215	\$18,218	\$19,194	\$0				\$172,454
Above Errors \$	\$1,524	\$1,363	\$889	\$388	\$691	\$616	\$658	\$1,084	\$0				\$7,213
Average Allotment Size of Error Cases		\$321.25											\$321
Average Error Amount	\$138.55	\$113.58	\$98.78	\$64.67	\$138.20	\$102.67	\$82.25	\$83	#DIV/0!				\$103
ELEMENTS	Oct-13	Nov-13	Dec-13	Jan-14	Feb-14	Mar-14	Apr-14	May-14	Jun-14	Jul-14	Aug-14	Sep-14	FFY 2014
Wages #	1	2	2	3		3		5					16
Wages \$	\$421	\$190	\$264	\$252		\$376		\$605					\$2,108
Standard Utility Allowance #	1		3			1		1					6
Standard Utility Allowance\$	\$41		\$299			\$118		\$49					\$507
Shelter #	2	2	1	2		1	1	2					11
Shelter \$	\$167	\$310	\$87	\$91		\$82	\$57	\$100					\$894
UIB #	1			1				1					3
UIB \$	\$82			\$45				\$61					\$188
Child Support Income #	1	1					1	1					4
Child Support Income \$	\$72	\$88					\$89	\$50					\$299
SSI #													0
SSI \$													\$0
RSDI #		1											1
RSDI \$		\$64											\$64
Public Assistance #								1					1
Public Assistance \$								\$64					\$64
Other Unearned Income #	1	1			1		1						4
Other Unearned Income \$	\$41	\$120			\$189		\$45						\$395
Citizenship #	1					1							2
Citizenship \$	\$404					\$40							\$444
Medical Expenses #		2					1						3
Medical Expenses \$		\$280					\$47						\$327
Child Care Expense #			2					1					3
Child Care Expense \$			\$173					\$67					\$240
Child Support Expense #	\$1		\$1										2
Child Support Expense \$	\$45		\$66										\$111
Education Loan #													0
Education Loan \$													\$0
Student Status #					1		1						2
Student Status \$					\$135		\$160						\$295
HH Composition #	2	3			3		3	1					12
HH Composition \$	\$251	\$311			\$367		\$260	\$88					\$1,277
Proration Error #													0
Proration Error \$													\$0
Disqualified Recipient #													0
Disqualified Recipient \$													\$0
TOTAL #	11	12	9	6	5	6	8	13	0	0	0	0	70
Total \$	\$1,524	\$1,363	\$889	\$388	\$691	\$616	\$658	\$1,084	\$0	\$0	\$0	\$0	\$7,213

FY 2014 SNAP Case & Procedural Case Review

(October and March 2014)

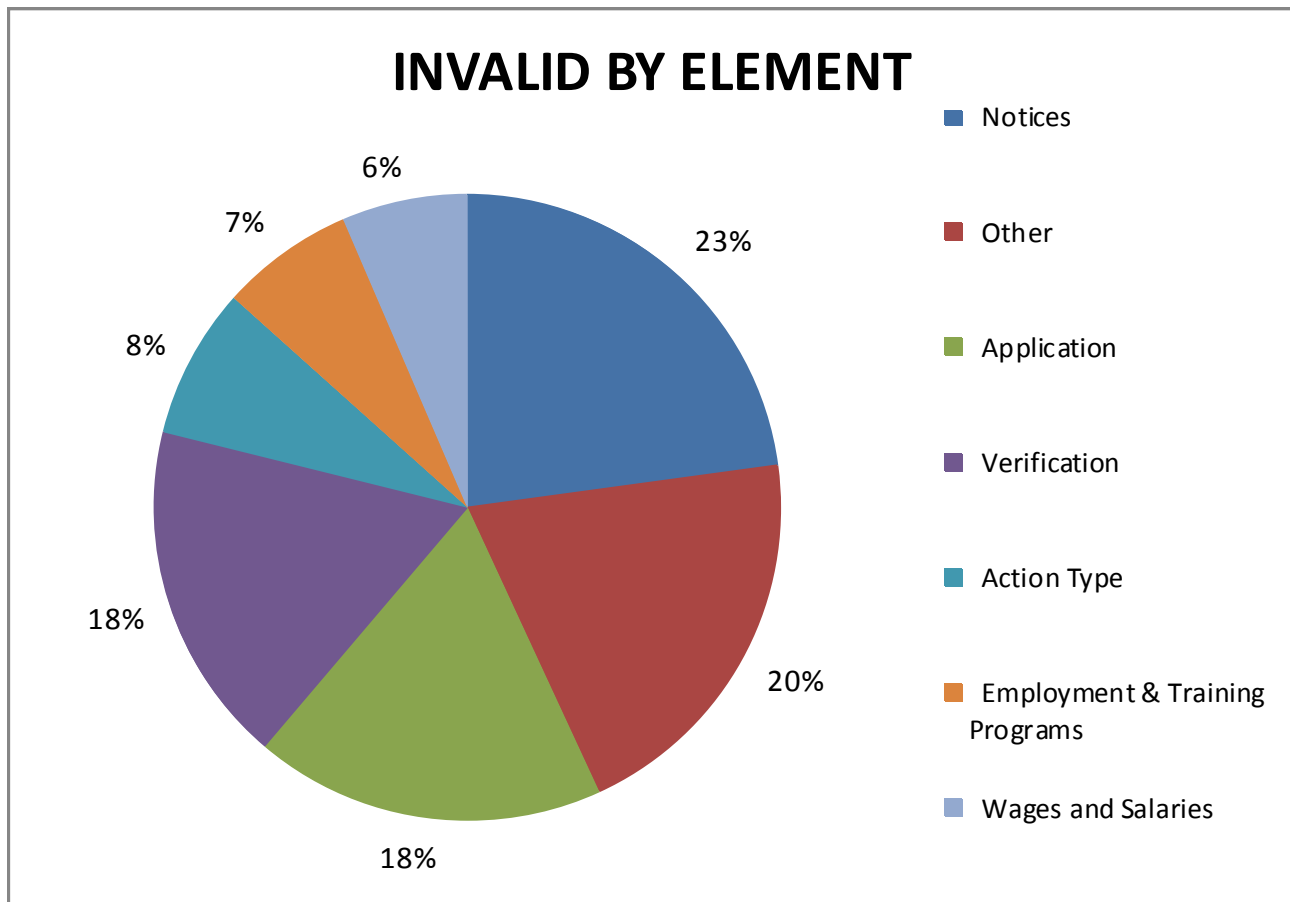
Goal = 25%

County	Complete	Errors	Neg Case Error Rate
Adams	45	26	57.78%
Alamosa	4	2	50.00%
Arapahoe	55	23	41.82%
Archuleta			#DIV/0!
Baca			
Bent	2	2	100.00%
Boulder	22	4	18.18%
Broomfield	2	1	50.00%
Chaffee			#DIV/0!
Cheyenne			
Clear Creek			
Conejos	2	2	100.00%
Costilla			#DIV/0!
Crowley			
Custer			
Delta	7	3	42.86%
Denver	76	51	67.11%
Dolores			
Douglas	2	2	100.00%
Eagle			#DIV/0!
El Paso	81	38	46.91%
Elbert			#DIV/0!
Fremont	10	4	40.00%
Garfield	8	6	75.00%
Gilpin	1	1	100.00%
Grand	2	0	0.00%
Gunnison			#DIV/0!
Hinsdale			
Huerfano			
Jackson			
Jefferson	34	18	52.94%
Kiowa			
Kit Carson	1	1	100.00%
Lake			
La Plata	7	0	0.00%
Larimer	29	14	48.28%
Las Animas	4		0.00%
Lincoln			
Logan	1	0	0.00%
Mesa	15	9	60.00%
Mineral			
Moffat	4	2	50.00%
Montezuma			#DIV/0!
Montrose	7	5	71.43%
Morgan	5	1	20.00%
Otero	3	2	66.67%

County	Complete	Errors	Neg Case Error Rate
Ouray			
Park	1	0	0.00%
Phillips	1	0	0.00%
Pitkin			
Prowers	2	2	100.00%
Pueblo	26	12	46.15%
Rio Blanco	1	1	100.00%
Rio Grande	2	1	50.00%
Routt	2	1	50.00%
Saguache	2	2	100.00%
San Juan			
San Miguel			#DIV/0!
Sedgwick			#DIV/0!
Summit	1	1	100.00%
Teller	2	1	50.00%
Washington			
Weld	28	8	28.57%
Yuma			#DIV/0!
TOTAL	497	246	49.50%
State Responsibility		34.96%	
County Responsibility		65.04%	

FY 2014 SNAP Case & Procedural Case Review By Element Ranking

ELEMENTS	DENIALS		TERMINATIONS		INVALID	PERCENT
Notices	11	4.47%	42	17.07%	53	21.54%
Other	22	8.94%	25	10.16%	47	19.11%
Application	41	16.67%	1	0.41%	42	17.07%
Verification	30	12.20%	11	4.47%	41	16.67%
Action Type	4	1.63%	14	5.69%	18	7.32%
Employment & Training Programs	4	1.63%	12	4.88%	16	6.50%
Wages and Salaries	9	3.66%	6	2.44%	15	6.10%
Residency	1	0.41%	2	0.81%	3	1.22%
Unemployment Compensation	2	0.81%	0	0.00%	2	0.81%
SSI and/or State SSI Supplement	1	0.41%	1	0.41%	2	0.81%
RSDI Benefits	1	0.41%	1	0.41%	2	0.81%
Self-Employment	2	0.81%	0	0.00%	2	0.81%
Medical Deductions	1	0.41%	0	0.00%	1	0.41%
Household Composition	1	0.41%	0	0.00%	1	0.41%
Student Status	1	0.41%	0	0.00%	1	0.41%
Total	131	53.25%	115	46.75%	246	100.00%



FFY 2014 SNAPQA Case & Procedural Errors by Element and Month

	Oct-12	Nov-12	Dec-12	Jan-13	Feb-13	Mar-13	Apr-13	May-13	Jun-13	Jul-13	Aug-13	Sep-13	FFY 13 YTD
Completed Reviews	72	54	59	59	54	60	77	62					497
Invalid #	42	30	29	29	25	27	36	28					246
CAPER Rate	58.33%	55.56%	49.15%	49.15%	46.30%	45.00%	46.75%	45.16%					49.50%
ELEMENTS													
Other	12	6	4	3	2	7	7	6	4				51
Verification	6	8	3	4	7	2	7	5	5	1			48
Notices	9	5	4	7	3	6	12	9	21	4			80
Application	3	5	7	10	5	3	6	4	4				47
Wages	2	1	3	1	2	2	4	2					17
Employment & Training	4	1	2	1	2	2	5		4				21
Action Type	4	2	5	1	2	3		1		1			19
HH Composition					1		1						2
Child Support Income													0
Child Support Deduction													0
UIB	1					1							2
Residency		1		1				1					3
Student Status							1						1
Self-Employment			1			1							2
Work Registration													0
Shelter													0
Standard Utility Allowance													0
Unearned Income													0
Public Assistance													0
Resources													0
RSDI	1				1								2
Citizenship									1				1
SSI		1		1									2
Medical Deductions							2						
TOTAL	42	30	29	29	25	27	45	28	39	6	0	0	300

Other: includes CBMS errors, Data Entry, misapplication of policy, and misuse of CBMS.
Action Type: Periodic Reports not acted on timely.

FFY 2014 SNAPQA Case & Procedural Errors by Causes

ERROR CAUSES	# Cases	% Cases
Policy incorrectly applied	45	18.29%
Notice not clearly understandable	32	13.01%
Data entry and/or coding error (includes selection of incorrect codes)	24	9.76%
Improper Denial/Termination - failure to provide - verification was received or is in case file	19	7.72%
Late denial agency failed to process the application timely	13	5.28%
Computer programming error	13	5.28%
Failed to send notice of action	13	5.28%
Improper termination or suspension for failure to meet reporting requirements	12	4.88%
Failed to process the reapplication timely (recertification application)	11	4.47%
Agency failed to follow up on known and reported impending changes	8	3.25%
Improper denial prior to end of timeframe for providing verification	7	2.85%
Income from known/processed source included that should not have been	7	2.85%
Improper Denial/Termination - failure to provide - household never notified of needed verification	4	1.63%
Verification of income requested for a person not associated with current application	4	1.63%
Improper denial within 30-day period for missing interview(s)	4	1.63%
Agency failed to follow up on inconsistent or incomplete information	4	1.63%
Computer user error (Improper use of system or unauthorized process or work around)	3	1.22%
Notice reason does not match reason for action	3	1.22%
Individual inappropriately sanctioned	3	1.22%
Improper income calculation	2	0.81%
Failed to issue a required Notice of Missed Interview (NOMI)	2	0.81%
Notice did not include date of intended action	2	0.81%
Other	1	0.41%
Verification was in case file	1	0.41%
Improper Denial/Termination - failure to provide - household not given at least 10 days to provide	1	0.41%
Failed to consider or incorrectly considered Eligible Student status	1	0.41%
Failed to consider or incorrectly considered Medical deductions	1	0.41%
Failed to consider or incorrectly considered reported information	1	0.41%
Improper Denial/Termination - failure to provide - failed to send a request for contact	1	0.41%
Improper Denial/Termination - failure to provide - for verification requested for another program	1	0.41%
Household not notified of requirement to register with work program	1	0.41%
Improper denial - failed to screen for expedited service	1	0.41%
Improper denial or termination, not out of the project area	1	0.41%
TOTAL	246	100%

