



Colorado Department of Human Services  
people who help people

Colorado State Department of Human Services  
Office of Performance and Strategic Outcomes  
SNAP Quality Assurance



**COLORADO SNAP QUALITY CONTROL  
POINT-IN-TIME SUMMARY REPORT  
FEDERAL FISCAL YEAR 2012**  
(September 24, 2012)

**NATIONAL:**

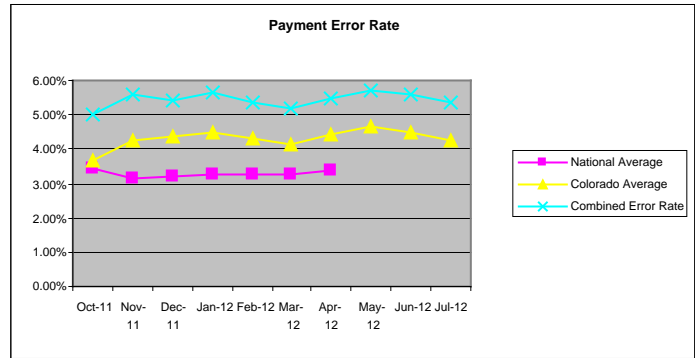
National Average Active = 3.35%  
National Colorado Ranking = 37 out of 53  
Mountain Plains Region Ranking = 7 out of 10

National Average Negative = 22.01%  
National Colorado Ranking = 53 out of 53  
Mountain Plains Region Ranking = 10

**STATE:**

Active Case Error Rate = **8.54%**  
Active Payment Error Rate (PER) = **4.24%**  
Target Goal = 3%

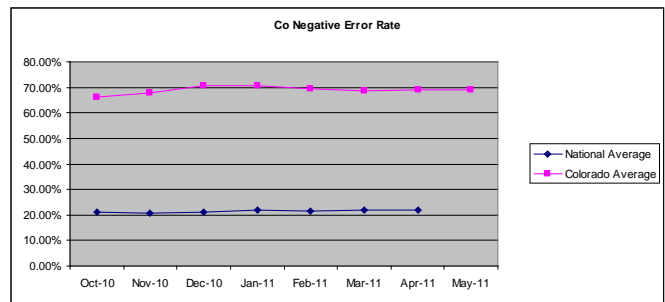
- Total Cases Reviewed = 796
- Total Cases with Errors = 68
- Total Issuance = \$226,278
- Total Misspent = \$9,584



Negative Error Rate = **68.13%**  
Target Goal = 25%

- Total Cases Reviewed = 750
- Total Invalid = 511

**Negative Error Rate without  
CBMS or NOAA Errors = 37.24%**



**FEDERAL TIMELINESS:**

State = 89.84%(Regular and EXP only)

NOTE: All Oct 2011 through May 2012 reviews are submitted (released) and data is less likely to change. Reviews for June 2012 forward are still in the process and this data will change.

# SNAP QA Active Error Rates

(October 2011 through September 24, 2012)

SNAP QA obtains and monitors additional payment errors on active cases for better trend analysis and to achieve a more accurate understanding of causes and areas-of-risk. These are: 1) payment errors at or below \$50 and 2) all payment errors regardless of amount (combined). The combined payment error rate should reflect error trends found at the local level through SNAP Case file Reviews and this figure should be used at the local level to implement program integrity activities.

## **State Payment Error Rate Below the Threshold:**

Active Case Error Rate = **14.95%**

Active Payment Error Rate (below) = **1.08%**

Target Goal = 3%

- Total Cases Reviewed = 796
- Total Cases with Errors = 119
- Total Issuance = \$226,278
- Total Misspent = \$2,436

## **Combined State Payment Error Rate:**

Active Case Error Rate = **23.49%**

Active Payment Error Rate (Combined) = **5.31%**

Target Goal = 3%

- Total Cases Reviewed = 796
- Total Cases with Errors = 187
- Total Issuance = \$226,278
- Total Misspent = \$12,020

# FFY 2012 Trends

(October 2011 through September 24, 2012)

Payment Error by Element:

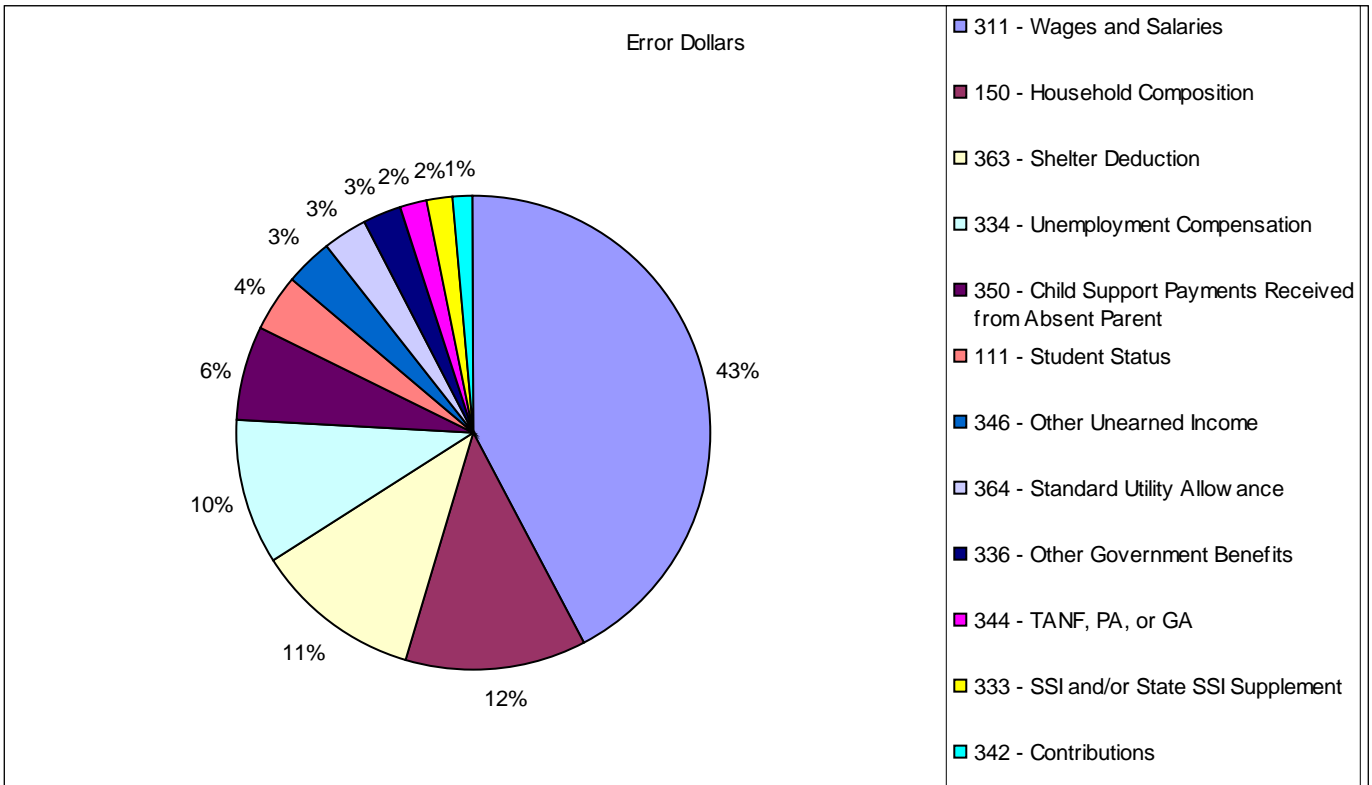
County	Income							Deductions					Other			TOTAL	
	Earned \$	Child Support \$	RSDI \$	SSI \$	TANF	UIB \$	Other \$	Child Support	Child Care	Medical	Shelter	Utilities	HH Comp	Student Status	Other	Agency	Client
<b>Adams</b>																	
Agency		\$120				\$145						\$118	\$87				\$470
Client	\$301																\$301
<b>Arapahoe</b>																	
Agency					\$177	\$694					\$109			\$159			\$1,139
Client	\$235										\$54						\$289
<b>Boulder</b>																	
Agency		\$55															\$55
Client	\$223										\$233						\$456
<b>Denver</b>																	
Agency	\$475								\$112		\$60	\$77	\$494				\$1,218
Client													\$119				\$119
<b>El Paso</b>																	
Agency	\$104	\$77					\$132				\$277		\$333				\$923
Client	\$177																\$177
<b>Jefferson</b>																	
Agency	\$536										\$161						\$697
Client																	\$0
<b>Larimer</b>																	
Agency							\$91				\$59		\$125	\$200			\$475
Client	\$96																\$96
<b>Mesa</b>																	
Agency		\$212															\$212
Client																	\$0
<b>Pueblo</b>																	
Agency		\$51		\$152			\$239					\$91					\$533
Client																	\$0
<b>Weld</b>																	
Agency							\$79										\$79
Client	\$447	\$92															\$539
<b>Big 10 Total</b>	<b>\$2,594</b>	<b>\$607</b>	<b>\$0</b>	<b>\$152</b>	<b>\$177</b>	<b>\$839</b>	<b>\$541</b>	<b>\$0</b>	<b>\$112</b>	<b>\$0</b>	<b>\$953</b>	<b>\$286</b>	<b>\$1,158</b>	<b>\$359</b>	<b>\$0</b>	<b>\$5,801</b>	<b>\$1,977</b>
<b>BIG 10 Grand</b>	<b>\$7,778</b>																
<b>All Others</b>																	
Agency	\$1,278					\$98	\$94				\$120					\$1,590	
Client	\$87						\$129										\$216
<b>All Others</b>	<b>\$1,365</b>	<b>\$0</b>	<b>\$0</b>	<b>\$0</b>	<b>\$0</b>	<b>\$98</b>	<b>\$223</b>	<b>\$0</b>	<b>\$0</b>	<b>\$0</b>	<b>\$120</b>	<b>\$0</b>	<b>\$0</b>	<b>\$0</b>	<b>\$0</b>	<b>\$1,590</b>	<b>\$216</b>
<b>Statewide</b>	<b>\$3,959</b>	<b>\$607</b>	<b>\$0</b>	<b>\$152</b>	<b>\$177</b>	<b>\$937</b>	<b>\$764</b>	<b>\$0</b>	<b>\$112</b>	<b>\$0</b>	<b>\$1,073</b>	<b>\$286</b>	<b>\$1,158</b>	<b>\$359</b>	<b>\$0</b>	<b>\$7,391</b>	<b>\$2,193</b>

# FFY 2012 Trends Continued

(October 2011 through September 24, 2012)

Payment Error Rank by Cost:

Error Elements	Error Dollars	Percent By Total	Error Cases	Percent By Total
311 - Wages and Salaries	\$3,959	41.31%	23	33.82%
150 - Household Composition	\$1,158	12.08%	8	11.76%
363 - Shelter Deduction	\$1,073	11.20%	11	16.18%
334 - Unemployment Compensation	\$937	9.78%	5	7.35%
350 - Child Support Payments Received from Absent Parent	\$607	6.33%	6	8.82%
111 - Student Status	\$359	3.75%	2	2.94%
346 - Other Unearned Income	\$317	3.31%	3	4.41%
364 - Standard Utility Allowance	\$286	2.98%	3	4.41%
336 - Other Government Benefits	\$239	2.49%	1	1.47%
344 - TANF, PA, or GA	\$177	1.85%	1	1.47%
333 - SSI and/or State SSI Supplement	\$152	1.59%	1	1.47%
342 - Contributions	\$129	1.35%	1	1.47%
323 - Dependent Care Deduction	\$112	1.17%	2	2.94%
331 - RSDI Benefits	\$79	0.82%	1	1.47%
<b>Totals</b>	<b>\$9,584</b>	<b>100.00%</b>	<b>68</b>	<b>100.00%</b>

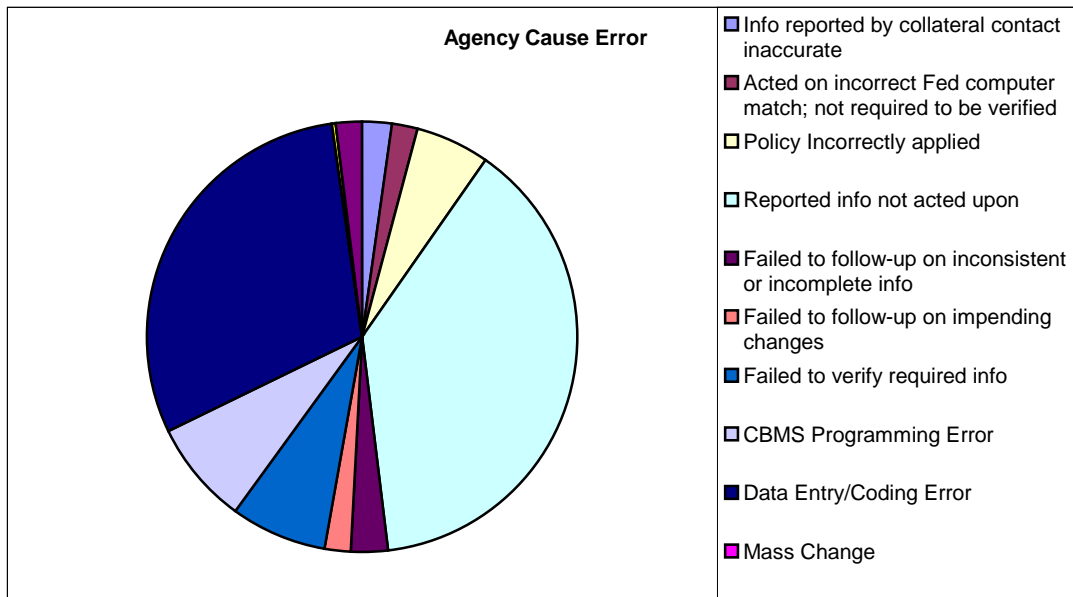


# FFY 2012 Trends Continued

(October 2011 through September 24, 2012)

## Payment Error Cause:

AGENCY CAUSED	# of cases	% of cases	Error Dollars	% of \$ Errors
Info reported by collateral contact inaccurate	1	0.01%	\$159	1.66%
Acted on incorrect Fed computer match; not required to be verified	1	1.47%	\$152	1.59%
Policy Incorrectly applied	3	4.41%	\$411	4.29%
Reported info not acted upon	24	35.29%	\$2,891	30.16%
Failed to follow-up on inconsistent or incomplete info	2	2.94%	\$212	2.21%
Failed to follow-up on impending changes	1	1.47%	\$145	1.51%
Failed to verify required info	3	4.41%	\$549	5.73%
CBMS Programming Error	5	7.35%	\$589	6.15%
Data Entry/Coding Error	12	17.65%	\$2,245	23.42%
Mass Change				
Math Error	1	1.47%	\$31	0.32%
Computer User Error		0.00%		0.00%
Other	2	2.94%	\$140	1.46%
<b>SUBTOTAL</b>	<b>55</b>	<b>80.88%</b>	<b>\$7,524</b>	<b>78.51%</b>
<b>CLIENT CAUSED</b>				
Fail to report	10	14.71%	\$1,433	14.95%
Incomplete or incorrect info provided		0.00%		0.00%
Info withheld	2	2.94%	\$473	4.94%
Incorrect info provided	1	1.47%	\$154	1.61%
<b>SUBTOTAL</b>	<b>13</b>	<b>19.12%</b>	<b>\$2,060</b>	<b>21.49%</b>
<b>NOT SPECIFIED</b>	1	1.47%	\$96	1.00%
<b>SUBTOTAL</b>				
<b>GRAND TOTAL</b>	<b>68</b>	<b>100.00%</b>	<b>\$9,584</b>	<b>100.00%</b>

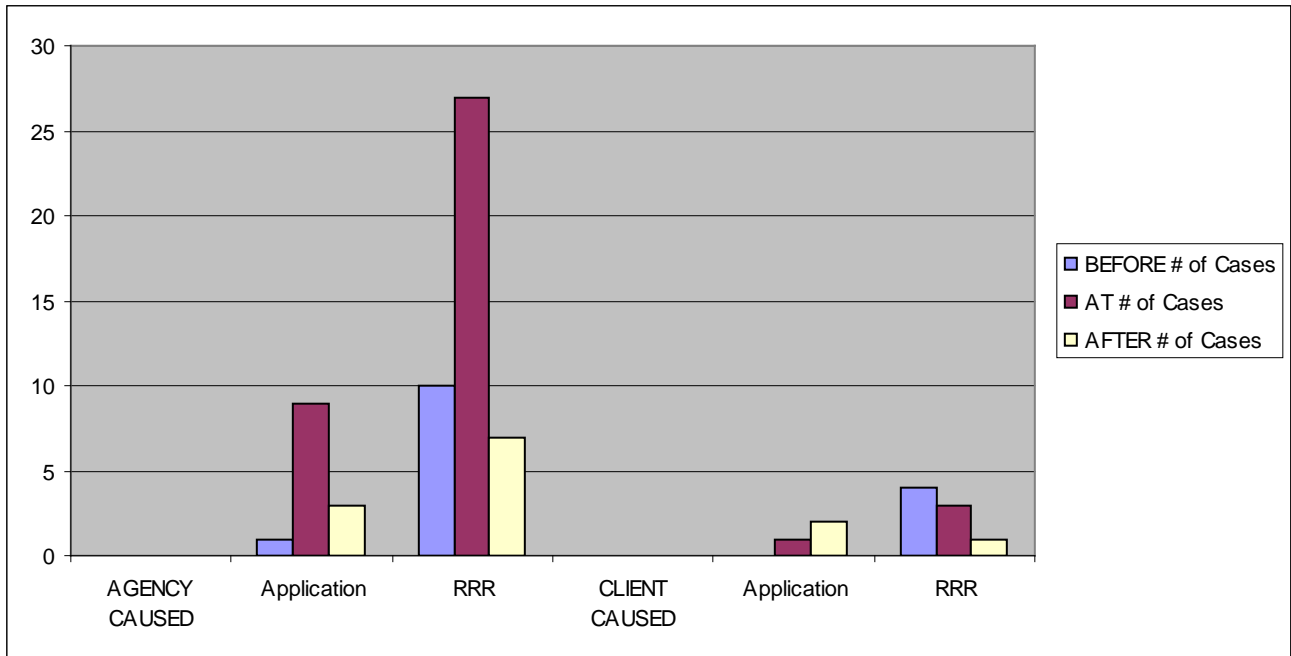


# FFY 2012 Trends Continued

(October 2011 through September 24, 2012)

Payment Error by Occurrence:

Most Recent Action	BEFORE	AT	AFTER	Total
	# of Cases	# of Cases	# of Cases	
<b>AGENCY CAUSED</b>				
Application	1	9	3	13
RRR	10	27	7	44
Subtotal	11	36	10	57
<b>CLIENT CAUSED</b>				
Application		1	2	3
RRR	4	3	1	8
Subtotal	4	4	3	11
<b>Grand Total</b>	<b>15</b>	<b>40</b>	<b>13</b>	<b>68</b>

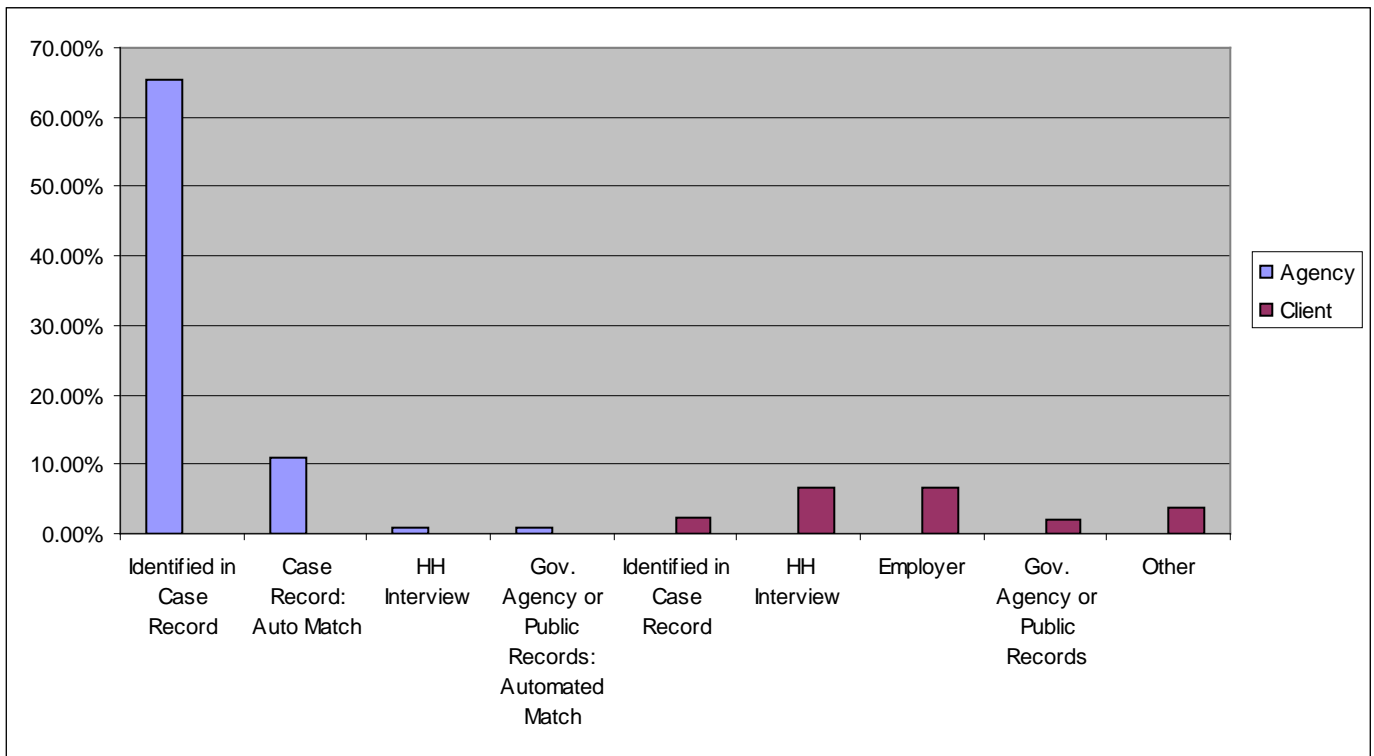


# FFY 2012 Trends Continued

(October 2011 through September 24, 2012)

Payment Error by Discovery:

	Agency	Client
Identified in Case Record	<b>65.32%</b>	
Case Record: Auto Match	10.91%	
HH Interview	0.91%	
Gov. Agency or Public Records: Automated Match	0.82%	
Identified in Case Record		2.33%
HH Interview		6.73%
Employer		6.76%
Gov. Agency or Public Records		1.91%
Other		3.77%



## FFY 2012 SNAP Active Case Review as of September 24, 2012

Federal Payment Error Rate (official):

County	Complete	Errors	Case Error Rate	COUPON ALLOTMENT	DOLLARS IN ERROR	ERROR RATE (PER)	CBMS Errors	\$ in Error	County Error Rate
Adams	89	5	5.62%	\$25,260	\$771	3.05%			
Alamosa	4	1	25.00%	\$1,606	\$87	5.42%			
Arapahoe	73	8	10.96%	\$22,047	\$1,428	6.48%	1	\$177	5.67%
Archuleta	2	0	0.00%	\$891	0	0.00%			
Baca	1		0.00%	\$16		0.00%			
Bent									
Boulder	36	4	11.11%	\$7,634	\$511	6.69%	1	\$55	5.97%
Broomfield	7	0	0.00%	\$1,872	0	0.00%			
Chaffee	2	0	0.00%	\$335	\$0	0.00%			
Cheyenne									
Clear Creek	5	1	20.00%	\$1,052	\$58	5.51%			
Conejos	3	0	0.00%	\$412		0.00%			
Costilla	3	0	0.00%	\$172	\$0	0.00%			
Crowley	1		0.00%	\$381		0.00%			
Custer	1		0.00%	\$526		0.00%			
Delta	10	0	0.00%	\$2,822	\$0	0.00%			
Denver	157	14	8.92%	\$44,076	\$1,337	3.03%			
Dolores									
Douglas	8	0	0.00%	\$2,079	0	0.00%			
Eagle									
Elbert	2		0.00%	\$691		0.00%			
El Paso	89	10	11.24%	\$27,887	\$1,100	3.94%	1	\$168	3.34%
Fremont	3		0.00%	\$542		0.00%			
Garfield	8	1	12.50%	\$1,339	\$129	9.63%			
Gilpin									
Grand	1	1	100.00%	\$614	\$120	19.54%			
Gunnison	1		0.00%	\$526					
Hinsdale									
Huerfano	1	0	0.00%	\$50	0	0.00%			
Jackson	2		0.00%	\$385		0.00%			
Jefferson	57	5	8.77%	\$17,568	\$697	3.97%			
Kiowa	1		0.00%	\$526		0.00%			
Kit Carson	1	1	100.00%	\$340	\$168	49.41%			
Lake									
La Plata	7	0	0.00%	\$1,774	0	0.00%			
Larimer	32	5	15.63%	\$9,832	\$571	5.81%			
Las Animas	9	0	0.00%	\$2,105	0	0.00%			
Lincoln									
Logan	1	0	0.00%	\$358	0	0.00%			
Mesa	35	1	2.86%	\$8,562	\$212	2.48%	1	\$212	0.00%
Mineral									
Moffat	2		0.00%	\$772		0.00%			
Montezuma	5	0	0.00%	\$1,337	\$0	0.00%			
Montrose	12	0	0.00%	\$2,737	\$0	0.00%			
Morgan	1		0.00%	\$81		0.00%			
Otero	3	0	0.00%	\$1,112	0	0.00%			



County	Complete	Errors	Case Error Rate	COUPON ALLOTMENT	DOLLARS IN ERROR	ERROR RATE	CBMS Errors	\$ in Error	County Error Rate
Ouray	1		0.00%	\$200		0.00%			
Park	4		0.00%	\$1,386		0.00%			
Phillips									
Pitkin	1	0	0.00%	\$367	0	0.00%			
Prowers	5	0	0.00%	\$1,253	\$0	0.00%			
Pueblo	65	4	6.15%	\$19,125	\$533	2.79%	1	\$51	2.52%
Rio Blanco	2		0.00%	\$726		0.00%			
Rio Grande	1		0.00%	\$191		0.00%			
Routt	2	1	50.00%	\$1,374	\$1,052	76.56%			
Saguache	3	0	0.00%	\$600	\$0	0.00%			
San Juan	1		0.00%	\$367		0.00%			
San Miguel			#DIV/0!						
Sedgwick	1		0.00%	\$495		0.00%			
Summit	2	2	100.00%	\$473	\$192	40.59%			
Teller	2		0.00%	\$473		0.00%			
Washington	1	0	0.00%	\$367	0	0.00%			
Weld	29	4	13.79%	\$8,326	\$618	7.42%			
Yuma	1	0	0.00%	\$236	0	0.00%			
<b>TOTAL</b>	<b>796</b>	<b>68</b>	<b>8.54%</b>	<b>\$226,278</b>	<b>\$9,584</b>	<b>4.24%</b>	<b>5</b>	<b>\$663</b>	<b>3.94%</b>

It is critical that counties with a payment error rate in excess of 3.5% take measures to reduce the payment error rate in the county in order to ensure payment accuracy and that the state as a whole meets or exceeds a Payment Error Rate of less than the National Average.

## FFY 2012 SNAP Active Case Review as of September 24, 2012

Combined Payment Error Rate:

County	Complete	\$> Threshold (PER)	\$< Threshold	Case Error Rate	COUPON ALLOTMENT	DOLLARS IN ERROR	Threshold \$ Errors	ERROR RATE
Adams	89	5	13	20.22%	\$25,260	\$771	\$226	3.95%
Alamosa	4	1	0	25.00%	\$1,606	\$87		5.42%
Arapahoe	73	8	9	23.29%	\$22,047	\$1,428	\$198	7.38%
Archuleta	2	0	1	50.00%	\$891	0	\$10	1.12%
Baca	1			0.00%	\$16			0.00%
Bent				#DIV/0!				
Boulder	36	4	7	30.56%	\$7,634	\$511	\$153	8.70%
Broomfield	7	0		0.00%	\$1,872	0		0.00%
Chaffee	2	0		0.00%	\$335	\$0		0.00%
Cheyenne				#DIV/0!				
Clear Creek	5	1		20.00%	\$1,052	\$58		5.51%
Conejos	3	0		0.00%	\$412			0.00%
Costilla	3	0	1	33.33%	\$172	\$0	\$6	3.49%
Crowley	1			0.00%	\$381			0.00%
Custer	1			0.00%	\$526			0.00%
Delta	10	0		0.00%	\$2,822	\$0		0.00%
Denver	157	14	23	23.57%	\$44,076	\$1,337	\$458	4.07%
Dolores				#DIV/0!				
Douglas	8	0	2	25.00%	\$2,079	0	\$32	1.54%
Eagle				#DIV/0!				
Elbert	2			0.00%	\$691			0.00%
El Paso	89	10	15	28.09%	\$27,887	\$1,100	\$272	4.92%
Fremont	3			0.00%	\$542			0.00%
Garfield	8	1	3	50.00%	\$1,339	\$129	\$33	12.10%
Gilpin				#DIV/0!				
Grand	1	1		100.00%	\$614	\$120		19.54%
Gunnison	1			0.00%	\$526			0.00%
Hinsdale				#DIV/0!				#DIV/0!
Huerfano	1	0		0.00%	\$50	0		0.00%
Jackson	2		1	50.00%	\$385		\$43	11.17%
Jefferson	57	5	12	29.82%	\$17,568	\$697	\$278	5.55%
Kiowa	1			0.00%	\$526			0.00%
Kit Carson	1	1		100.00%	\$340	\$168		
Lake				#DIV/0!				
La Plata	7	0	2	28.57%	\$1,774	0	\$46	2.59%
Larimer	32	5	1	18.75%	\$9,832	\$571	\$48	6.30%
Las Animas	9	0	1	11.11%	\$2,105	0	\$17	0.81%
Lincoln				#DIV/0!				
Logan	1	0		0.00%	\$358	0		0.00%
Mesa	35	1	6	20.00%	\$8,562	\$212	\$151	4.24%
Mineral				#DIV/0!				#DIV/0!
Moffat	2			0.00%	\$772			0.00%
Montezuma	5	0		0.00%	\$1,337	\$0		0.00%
Montrose	12	0	1	8.33%	\$2,737	\$0	\$5	0.18%
Morgan	1			0.00%	\$81			0.00%
Otero	3	0		0.00%	\$1,112	0		0.00%

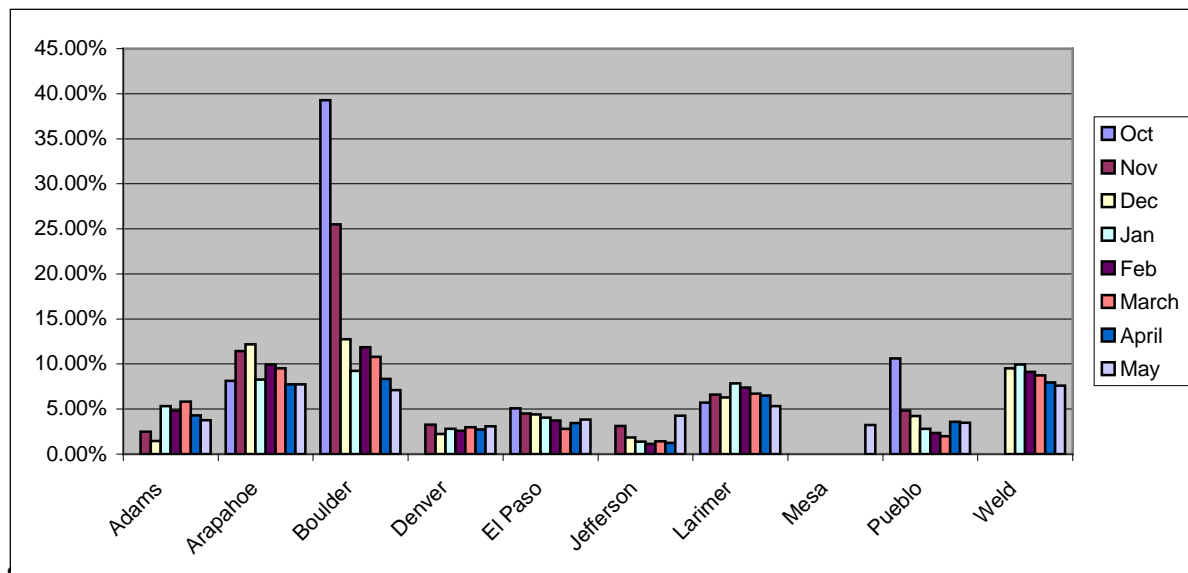
County	Complete	Errors	\$< Threshold	Case Error Rate	COUPON ALLOTMENT	DOLLARS IN ERROR	Threshold \$ Errors	ERROR RATE
Ouray	1			0.00%	\$200			0.00%
Park	4			0.00%	\$1,386			0.00%
Phillips				#DIV/0!				#DIV/0!
Pitkin	1	0		0.00%	\$367	0		0.00%
Prowers	5	0	2	40.00%	\$1,253	\$0	\$37	2.95%
Pueblo	65	4	14	27.69%	\$19,125	\$533	\$297	4.34%
Rio Blanco	2			0.00%	\$726			0.00%
Rio Grande	1			0.00%	\$191			0.00%
Routt	2	1	1	100.00%	\$1,374	\$1,052	\$15	77.66%
Saguache	3	0	1	33.33%	\$600	\$0	\$35	5.83%
San Juan	1			0.00%	\$367			0.00%
San Miguel				#DIV/0!				#DIV/0!
Sedgwick	1			0.00%	\$495			0.00%
Summit	2	2		100.00%	\$473	\$192		40.59%
Teller	2			0.00%	\$473			0.00%
Washington	1	0		0.00%	\$367	0		0.00%
Weld	29	4	3	24.14%	\$8,326	\$618	\$76	8.34%
Yuma	1	0		0.00%	\$236	0		0.00%
<b>TOTAL</b>	<b>796</b>	<b>68</b>	<b>119</b>	<b>23.49%</b>	<b>\$226,278</b>	<b>\$9,584</b>	<b>\$2,436</b>	<b>5.31%</b>

# FFY 2012 SNAP Active Case Review as of Sept. 24, 2012

## Big 10 Counties

Cumulative:

Month	County										TOTAL
Oct-11	Adams	Arapahoe	Boulder	Denver	El Paso	Jefferson	Larimer	Mesa	Pueblo	Weld	
Complete	8	11	3	12	5	7	4	4	5	4	<b>63</b>
Errors	0	1	2	0	1	0	1	0	1	0	<b>6</b>
PER	0.00%	8.14%	39.27%	0.00%	5.09%	0.00%	5.71%	0.00%	10.62%	0.00%	<b>4.67%</b>
<b>Nov-11</b>											
Complete	17	16	6	23	18	13	7	8	14	8	<b>130</b>
Errors	1	2	2	3	3	1	2	0	2	0	<b>16</b>
PER	2.49%	11.43%	25.51%	3.25%	4.50%	3.13%	6.59%	0.00%	4.83%	0.00%	<b>4.90%</b>
<b>Dec-11</b>											
Complete	27	21	11	39	25	21	11	13	18	16	<b>202</b>
Errors	1	4	2	3	5	1	3	0	2	2	<b>23</b>
PER	1.47%	12.19%	12.76%	2.22%	4.41%	1.83%	6.29%	0.00%	4.21%	9.52%	<b>4.76%</b>
<b>Jan-12</b>											<b>0</b>
Complete	36	30	15	53	35	27	17	13	26	19	<b>271</b>
Errors	3	4	2	4	6	1	4	0	2	3	<b>29</b>
PER	5.32%	8.28%	9.24%	2.79%	4.05%	1.38%	7.86%	0.00%	2.79%	9.95%	<b>4.78%</b>
<b>Feb-12</b>											<b>0</b>
Complete	42	40	19	76	40	31	18	16	33	20	<b>335</b>
Errors	3	6	4	5	6	1	4	0	2	3	<b>34</b>
PER	4.83%	9.94%	11.85%	2.60%	3.74%	1.14%	7.38%	0.00%	2.33%	9.13%	<b>4.73%</b>
<b>Mar-12</b>											<b>0</b>
Complete	49	47	21	92	55	38	21	19	37	23	<b>402</b>
Errors	5	7	4	7	6	2	4	0	2	4	<b>41</b>
PER	5.84%	9.51%	10.79%	2.99%	2.80%	1.43%	6.70%	0.00%	1.99%	8.74%	<b>4.52%</b>
<b>Apr-12</b>											<b>0</b>
Complete	61	55	26	112	69	43	23	24	42	26	<b>481</b>
Errors	5	7	4	9	8	2	4	0	3	4	<b>46</b>
PER	4.30%	7.76%	8.33%	2.74%	3.43%	1.25%	6.49%	0.00%	3.60%	7.94%	<b>4.15%</b>
<b>May-12</b>											<b>0</b>
Complete	70	61	31	126	81	48	28	27	48	28	<b>548</b>
Errors	5	8	4	11	9	4	4	1	4	4	<b>54</b>
PER	3.78%	7.73%	7.11%	3.08%	3.82%	4.26%	5.32%	3.24%	3.48%	7.61%	<b>4.43%</b>



# FY 2012 SNAP Negative Case Review as of Sept. 24, 2012

County	Complete	Errors	Neg Case Error Rate	CBMS/ NOAA Errors	County Error Rate
Adams	59	44	74.58%	26	30.51%
Alamosa	4	2	50.00%	3	-25.00%
Arapahoe	108	75	69.44%	42	30.56%
Archuleta			#DIV/0!		#DIV/0!
Baca					
Bent	1	1	100.00%	1	0.00%
Boulder	33	21	63.64%	13	24.24%
Broomfield	6	3	50.00%	2	16.67%
Chaffee	6	5	83.33%		83.33%
Cheyenne					
Clear Creek					
Conejos	1	1	100.00%		100.00%
Costilla					
Crowley	1	0	0.00%		0.00%
Custer					
Delta	3	3	100.00%	1	66.67%
Denver	133	89	66.92%	34	41.35%
Dolores					
Douglas	10	8	80.00%	5	30.00%
Eagle	2	2	100.00%	2	0.00%
El Paso	107	78	72.90%	37	38.32%
Elbert	2	2	100.00%	1	50.00%
Fremont	13	8	61.54%	4	30.77%
Garfield	6	5	83.33%	3	33.33%
Gilpin					
Grand	1	1	100.00%	1	0.00%
Gunnison					
Hinsdale					
Huerfano	3	1	33.33%		33.33%
Jackson					
Jefferson	51	38	74.51%	16	43.14%
Kiowa					
Kit Carson					
Lake	1		0.00%		0.00%
La Plata	9	4	44.44%	3	11.11%
Larimer	32	17	53.13%	10	21.88%
Las Animas	8	4	50.00%	3	12.50%
Lincoln					
Logan	5	4	80.00%	3	20.00%
Mesa	22	16	72.73%	10	27.27%
Mineral					
Moffat	4	3	75.00%	3	0.00%
Montezuma	3	1	33.33%		33.33%
Montrose	7	4	57.14%	3	14.29%
Morgan	8	5	62.50%	2	37.50%
Otero	4	3	75.00%	1	50.00%

County	Complete	Errors	Neg Case Error Rate	CBMS/ NOAA Errors	County Error Rate
Ouray					
Park					
Phillips					
Pitkin	2	2	100.00%		100.00%
Prowers	2	2	100.00%	2	0.00%
Pueblo	34	21	61.76%	15	17.65%
Rio Blanco					
Rio Grande	5	4	80.00%	2	40.00%
Routt	1	1	100.00%		100.00%
Saguache	1	1	100.00%		100.00%
San Juan					
San Miguel	2	2	100.00%	1	50.00%
Sedgwick	1	1	100.00%		100.00%
Summit					
Teller	4	3	75.00%	2	25.00%
Washington					
Weld	45	26	57.78%	17	20.00%
Yuma					
<b>TOTAL</b>	<b>750</b>	<b>511</b>	<b>68.13%</b>	<b>268</b>	<b>32.40%</b>

**NOTE:** The County Error Rate determination is based on a manual process and displays approximately a 1-month delay. The blue columns reflect the data transmitted to the Federal Office and it takes up to 1 additional month after the Federal data is posted to fully review each file for responsible party for the error (i.e., state or county). This means the county error rate is accurate only for the point in time and does not reflect any of the outstanding reviews. **Based on the reviews to date, approximately 52.44% of the errors are the responsibility of the State.**

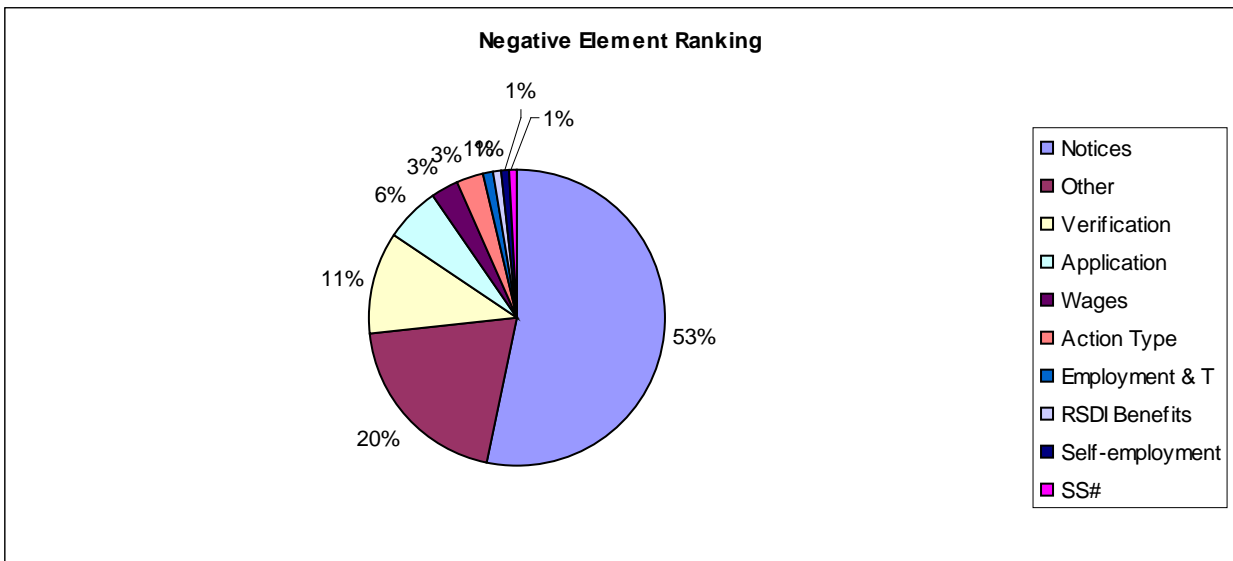
**NOTE 2:** As of August 22, 2012, duplicate Adverse Action Notices are being suppressed; therefore, it is likely that the number and percentage of error cited as a state responsibility will significantly decrease.

# FFY 2012 Negative Error Trends

(October 2011 through September 24, 2012)

Negative Error Ranking:

Element	Invalid #	% Of total
Notices	258	53.31%
Other	97	20.04%
Verification	54	11.16%
Application	28	5.79%
Wages	15	3.10%
Action Type	14	2.89%
Employment & T	6	1.24%
RSDI Benefits	4	0.83%
Self-employment	4	0.83%
SS#	4	0.83%
<b>TOTAL</b>	<b>484</b>	<b>100.00%</b>



## SNAP Federal Timeliness of Sept 24, 2012

County	TIMELY (Reg and EXP)		NOT TIMELY (Reg and EXP)		OTHER (Prior to FFY)		TIMELINESS TOTAL		% OF STATE TOTAL CASES REVIEWED	% OF STATE TIMELINESS RATE
	#	% of Sample	#	% of Sample	#	% of Sample	TOTAL CASES	TIMELINESS RATE		
Adams	27	30.00%	3	3.33%	60	66.67%	90	90.00%	10.83%	12.22%
Alamosa	0	0.00%	0	0.00%	4	100.00%	4		0.48%	0.00%
Arapahoe	18	24.00%	1	1.33%	56	74.67%	75	94.74%	9.03%	8.14%
Archuleta	2	100.00%	0	0.00%	0	0.00%	2	100.00%	0.24%	0.90%
Baca	1	100.00%	0	0.00%	0	0.00%	1	100.00%	0.12%	0.45%
Boulder	12	32.43%	2	5.41%	23	62.16%	37	85.71%	4.45%	5.43%
Broomfield	3	37.50%	0	0.00%	5	62.50%	8	100.00%	0.96%	1.36%
Chaffee	0	0.00%	0	0.00%	2	100.00%	2		0.24%	0.00%
Clear Creek	1	20.00%	0	0.00%	4	80.00%	5	100.00%	0.60%	0.45%
Conejos	0	0.00%	0	0.00%	3	100.00%	3		0.36%	0.00%
Costilla	0	0.00%	0	0.00%	3	100.00%	3		0.36%	0.00%
Crowley	1	100.00%	0	0.00%	0	0.00%	1	100.00%	0.12%	0.45%
Custer	0	0.00%	0	0.00%	1	100.00%	1		0.12%	0.00%
Delta	1	10.00%	0	0.00%	9	90.00%	10	100.00%	1.20%	0.45%
Denver	28	17.39%	8	4.97%	125	77.64%	161	77.78%	19.37%	12.67%
Douglas	3	37.50%	0	0.00%	5	62.50%	8	100.00%	0.96%	1.36%
Elbert	0	0.00%	0	0.00%	2	100.00%	2		0.24%	0.00%
El Paso	32	33.68%	3	3.16%	60	63.16%	95	91.43%	11.43%	14.48%
Fremont	0	0.00%	0	0.00%	3	100.00%	3		0.36%	0.00%
Garfield	1	12.50%	0	0.00%	7	87.50%	8	100.00%	0.96%	0.45%
Grand	0	0.00%	0	0.00%	1	100.00%	1		0.12%	0.00%
Gunnison	1	100.00%	0	0.00%	0	0.00%	1	100.00%	0.12%	0.45%
Huerfano	1	100.00%	0	0.00%	0	0.00%	1	100.00%	0.12%	0.45%
Jackson	0	0.00%	0	0.00%	2	100.00%	2		0.24%	0.00%
Jefferson	18	28.57%	2	3.17%	43	68.25%	63	90.00%	7.58%	8.14%



## SNAP Federal Timeliness of August 23, 2012

County	TIMELY (Reg and EXP)		NOT TIMELY (Reg and EXP)		OTHER (Prior to FFY)		TIMELINESS TOTAL		% OF STATE TOTAL CASES REVIEWED	% OF STATE TIMELINESS RATE
	#	% of Sample	#	% of Sample	#	% of Sample	TOTAL CASES	TIMELINESS RATE	%	%
Kiowa	0	0.00%	0	0.00%	1	100.00%	1		0.12%	0.00%
Kit Carson	0	0.00%	0	0.00%	1	100.00%	1		0.12%	0.00%
La Plata	1	14.29%	0	0.00%	6	85.71%	7	100.00%	0.84%	0.45%
Larimer	11	31.43%	1	2.86%	23	65.71%	35	91.67%	4.21%	4.98%
Las Animas	3	33.33%	1	11.11%	5	55.56%	9	75.00%	1.08%	1.36%
Logan	0	0.00%	0	0.00%	1	100.00%	1		0.12%	0.00%
Mesa	8	22.86%	0	0.00%	27	77.14%	35	100.00%	4.21%	3.62%
Moffat	1	33.33%	1	33.33%	1	33.33%	3	50.00%	0.36%	0.45%
Montezuma	0	0.00%	0	0.00%	6	100.00%	6		0.72%	0.00%
Montrose	4	33.33%	0	0.00%	8	66.67%	12	100.00%	1.44%	1.81%
Morgan	1	100.00%	0	0.00%	0	0.00%	1	100.00%	0.12%	0.45%
Otero	2	40.00%	0	0.00%	3	60.00%	5	100.00%	0.60%	0.90%
Ouray	1	100.00%	0	0.00%	0	0.00%	1	100.00%	0.12%	0.45%
Park	0	0.00%	1	25.00%	3	75.00%	4	0.00%	0.48%	0.00%
Pitken	0	0.00%	0	0.00%	1	100.00%	1		0.12%	0.00%
Prowers	1	16.67%	1	16.67%	4	66.67%	6	50.00%	0.72%	0.45%
Pueblo	20	30.30%	1	1.52%	45	68.18%	66	95.24%	7.94%	9.05%
Rio Blanco	2	100.00%	0	0.00%	0	0.00%	2	100.00%	0.24%	0.90%
Rio Grande	1	100.00%	0	0.00%	0	0.00%	1	100.00%	0.12%	0.45%
Routt	1	50.00%	0	0.00%	1	50.00%	2	100.00%	0.24%	0.45%
Saguache	1	33.33%	0	0.00%	2	66.67%	3	100.00%	0.36%	0.45%
San Juan	0	0.00%	0	0.00%	1	100.00%	1		0.12%	0.00%
Sedgwick	1	100.00%	0	0.00%	0	0.00%	1	100.00%	0.12%	0.45%
Summit	0	0.00%	0	0.00%	2	100.00%	2		0.24%	0.00%
Teller	2	50.00%	0	0.00%	2	50.00%	4	100.00%	0.48%	0.90%
Washington	0	0.00%	0	0.00%	1	100.00%	1		0.12%	0.00%
Weld	10	31.25%	0	0.00%	22	68.75%	32	100.00%	3.85%	4.52%
Yuma	0	0.00%	0	0.00%	1	100.00%	1		0.12%	0.00%
<b>TOTAL</b>	<b>221</b>	<b>26.59%</b>	<b>25</b>	<b>3.01%</b>	<b>585</b>	<b>70.40%</b>	<b>831</b>	<b>89.84%</b>	<b>100%</b>	<b>100%</b>