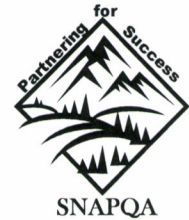




Colorado Department of Human Services
people who help people

Colorado State Department of Human Services
Office of Performance and Strategic Outcomes
SNAP Quality Assurance



**COLORADO SNAP QUALITY CONTROL
POINT-IN-TIME SUMMARY REPORT
FEDERAL FISCAL YEAR 2012**
(August 23, 2012)

NATIONAL:

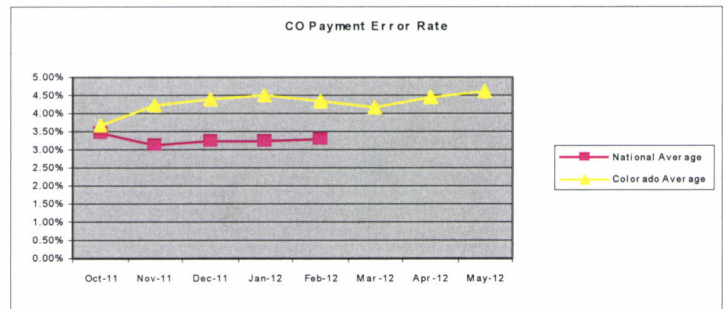
National Average Active = 3.24%
National Colorado Ranking = 37 out of 53
Mountain Plains Region Ranking = 7 out of 10

National Average Negative = 21.86%
National Colorado Ranking = 53 out of 53
Mountain Plains Region Ranking = 10

STATE:

Active Case Error Rate = **8.65%**
Active Payment Error Rate (PER) = **4.40%**
Target Goal = 3%

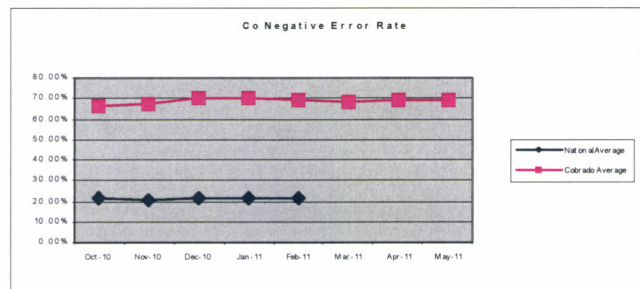
- Total Cases Reviewed = 705
- Total Cases with Errors = 61
- Total Issuance = \$200,028
- Total Misspent = \$8,809



Negative Error Rate = **68.97%**
Target Goal = 25%

- Total Cases Reviewed = 725
- Total Invalid = 500

**Negative Error Rate without
CBMS or NOAA Errors = 38.88%**



FEDERAL TIMELINESS:

State = 89.20%(Regular and EXP only)

NOTE: All Oct 2011 through April 2012 reviews are submitted (released) and data is less likely to change. Reviews for May 2012 forward are still in the process and this data will change.

SNAP QA Active Error Rates

(October 2011 through August 23, 2012)

SNAP QA obtains and monitors additional payment errors on active cases for better trend analysis and to achieve a more accurate understanding of causes and areas-of-risk. These are: 1) payment error at or below \$50 and 2) all payment errors regardless of amount (combined). The combined payment error rate should reflect error trends found at the local level through SNAP Case file Reviews and this figure should be used at the local level to implement program integrity activities.

State Payment Error Rate Below the Threshold:

Active Case Error Rate = **14.75%**

Active Payment Error Rate (below) = **1.06%**

Target Goal = 3%

- Total Cases Reviewed = 705
- Total Cases with Errors = 104
- Total Issuance = \$200,028
- Total Misspent = \$2,116

Combined State Payment Error Rate:

Active Case Error Rate = **23.40%**

Active Payment Error Rate (Combined) = **5.46%**

Target Goal = 3%

- Total Cases Reviewed = 705
- Total Cases with Errors = 165
- Total Issuance = \$200,028
- Total Misspent = \$10,925

FFY 2012 Trends

(October 2011 through August 23, 2012)

Payment Error by Element:

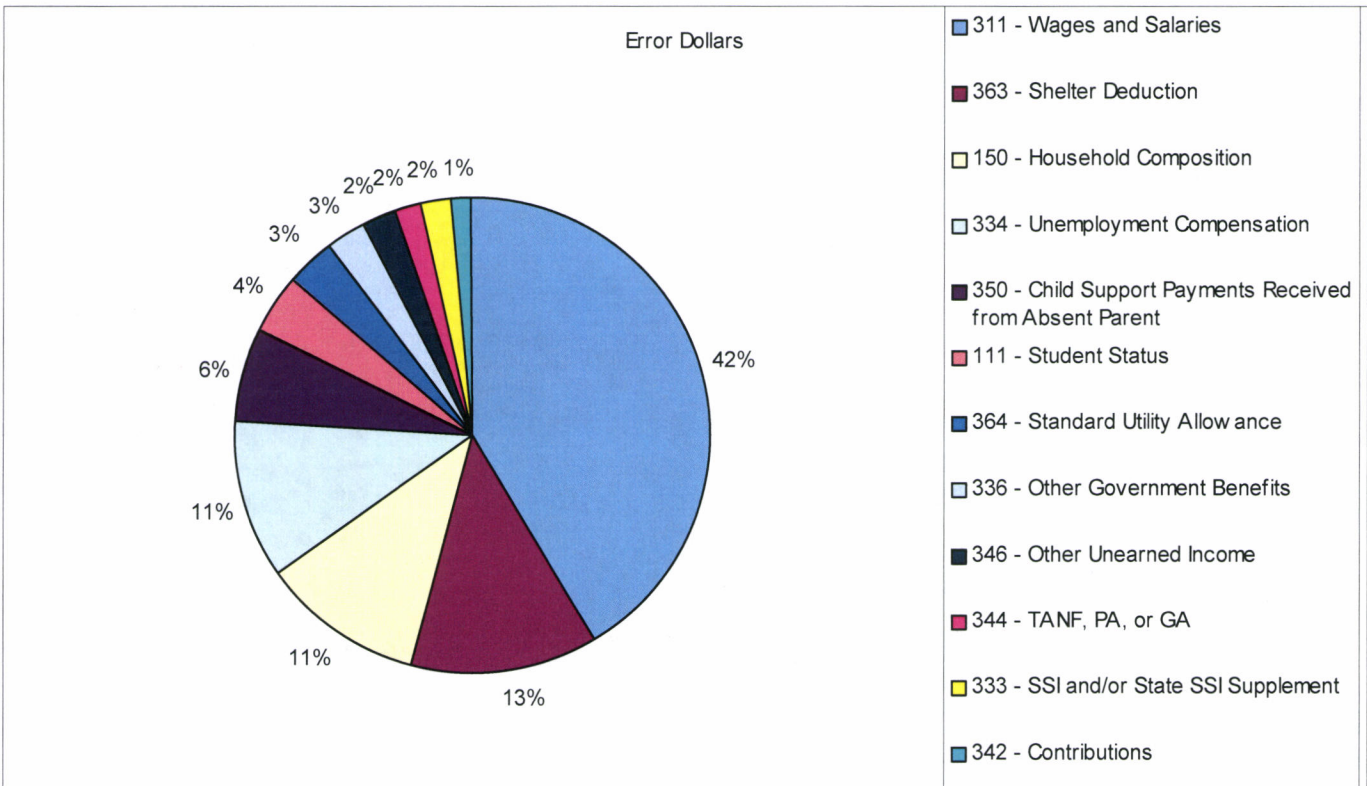
	Income							Deductions					Other			TOTAL	
County	Earned \$	Child Support \$	RSDI \$	SSI \$	TANF	UIB \$	Other \$	Child Support	Child Care	Medical	Shelter	Utilities	HH Comp	Student Status	Other	Agency	Client
Adams																	
Agency		\$120				\$145						\$118	\$87			\$470	
Client	\$301																\$301
Arapahoe																	
Agency					\$177	\$694					\$109			\$159		\$1,139	
Client	\$235									\$54							\$289
Boulder																	
Agency		\$55														\$55	
Client	\$223									\$233							\$456
Denver																	
Agency	\$337								\$112		\$60	\$77	\$494			\$1,080	
Client													\$119				\$119
El Paso																	
Agency	\$104	\$77									\$277		\$125			\$583	
Client	\$177																\$177
Jefferson																	
Agency	\$458										\$161					\$619	
Client																	\$0
Larimer																	
Agency							\$91				\$59		\$125	\$200		\$475	
Client	\$96																\$96
Mesa																	
Agency		\$212														\$212	
Client																	\$0
Pueblo																	
Agency				\$152			\$239					\$91				\$482	
Client																	\$0
Weld																	
Agency							\$79									\$79	
Client	\$447	\$92															\$539
Big 10 Total	\$2,378	\$556	\$0	\$152	\$177	\$839	\$409	\$0	\$112	\$0	\$953	\$286	\$950	\$359	\$0	\$5,194	\$1,977
BIG 10 Grand	\$7,171																
All Others																	
Agency	\$1,110					\$98	\$94				\$120					\$1,422	
Client	\$87						\$129										\$216
All Others	\$1,197	\$0	\$0	\$0	\$0	\$98	\$223	\$0	\$0	\$0	\$120	\$0	\$0	\$0	\$0	\$1,422	\$216

FFY 2012 Trends Continued

(October 2011 through August 23, 2012)

Payment Error Rank by Cost:

Error Elements	Error Dollars	Percent By Total	Error Cases	Percent By Total
311 - Wages and Salaries	\$3,575	40.58%	19	31.15%
363 - Shelter Deduction	\$1,073	12.18%	11	18.03%
150 - Household Composition	\$950	10.78%	7	11.48%
334 - Unemployment Compensation	\$937	10.64%	5	8.20%
350 - Child Support Payments Received from Absent Parent	\$556	6.31%	5	8.20%
111 - Student Status	\$359	4.08%	2	3.28%
364 - Standard Utility Allowance	\$286	3.25%	3	4.92%
336 - Other Government Benefits	\$239	2.71%	1	1.64%
346 - Other Unearned Income	\$185	2.10%	2	3.28%
344 - TANF, PA, or GA	\$177	2.01%	1	1.64%
333 - SSI and/or State SSI Supplement	\$152	1.73%	1	1.64%
342 - Contributions	\$129	1.46%	1	1.64%
323 - Dependent Care Deduction	\$112	1.27%	2	3.28%
331 - RSDI Benefits	\$79	0.90%	1	1.64%
Totals	\$8,809	100.00%	61	100.00%

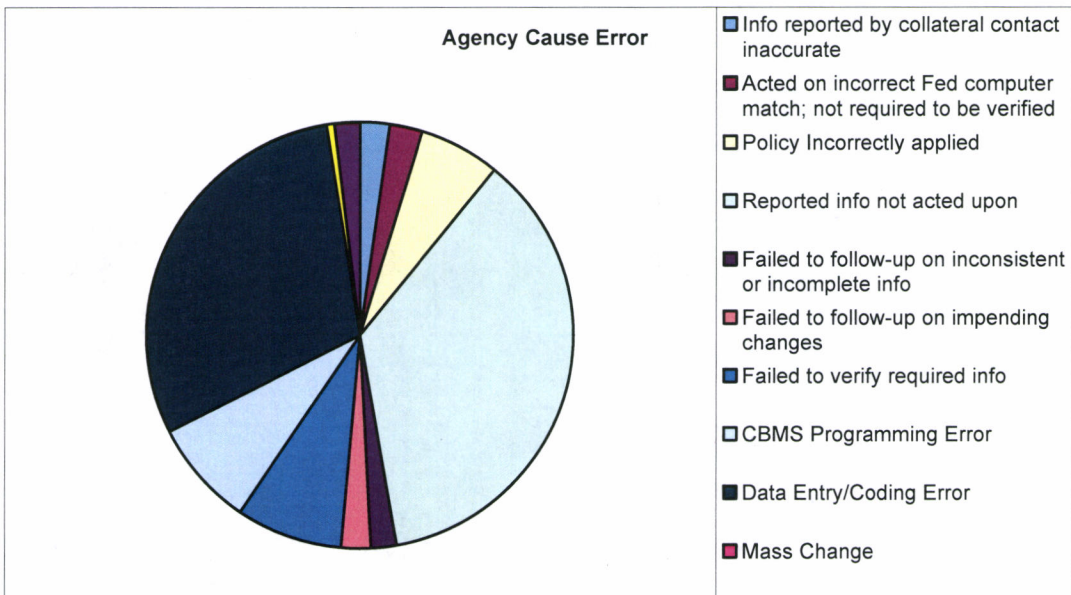


FFY 2012 Trends Continued

(October 2011 through August 23, 2012)

Payment Error Cause:

AGENCY CAUSED	# of cases	% of cases	Error Dollars	% of \$ Errors
Info reported by collateral contact inaccurate	1	0.01%	\$159	1.80%
Acted on incorrect Fed computer match; not required to be verified	1	1.64%	\$152	1.73%
Policy Incorrectly applied	3	4.92%	\$411	4.67%
Reported info not acted upon	21	34.43%	\$2,473	28.07%
Failed to follow-up on inconsistent or incomplete info	1	1.64%	\$126	1.43%
Failed to follow-up on impending changes	1	1.64%	\$145	1.65%
Failed to verify required info	3	4.92%	\$549	6.23%
CBMS Programming Error	4	6.56%	\$538	6.11%
Data Entry/Coding Error	10	16.39%	\$2,025	22.99%
Mass Change				
Math Error	1	1.64%	\$31	0.35%
Computer User Error		0.00%		0.00%
Other	2	3.28%	\$140	1.59%
SUBTOTAL	48	78.69%	\$6,749	76.61%
CLIENT CAUSED				
Fail to report	10	16.39%	\$1,433	16.27%
Incomplete or incorrect info provided		0.00%		0.00%
Info withheld	2	3.28%	\$473	5.37%
Incorrect info provided	1	1.64%	\$154	1.75%
SUBTOTAL	13	21.31%	\$2,060	23.39%
NOT SPECIFIED	1	1.64%	\$96	1.09%
SUBTOTAL				
GRAND TOTAL	61	100.00%	\$8,809	100.00%

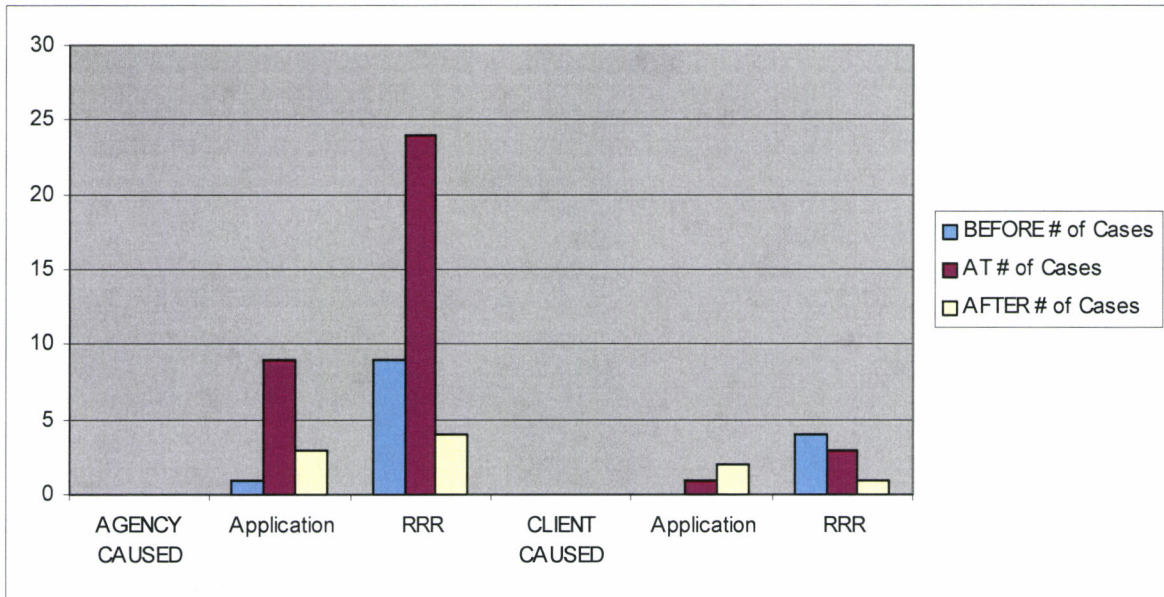


FFY 2012 Trends Continued

(October 2011 through August 23, 2012)

Payment Error by Occurrence:

Most Recent Action	BEFORE	AT	AFTER	Total
	# of Cases	# of Cases	# of Cases	
AGENCY CAUSED				
Application	1	9	3	13
RRR	9	24	4	37
Subtotal	10	33	7	50
CLIENT CAUSED				
Application		1	2	3
RRR	4	3	1	8
Subtotal	4	4	3	11
Grand Total	14	37	10	61

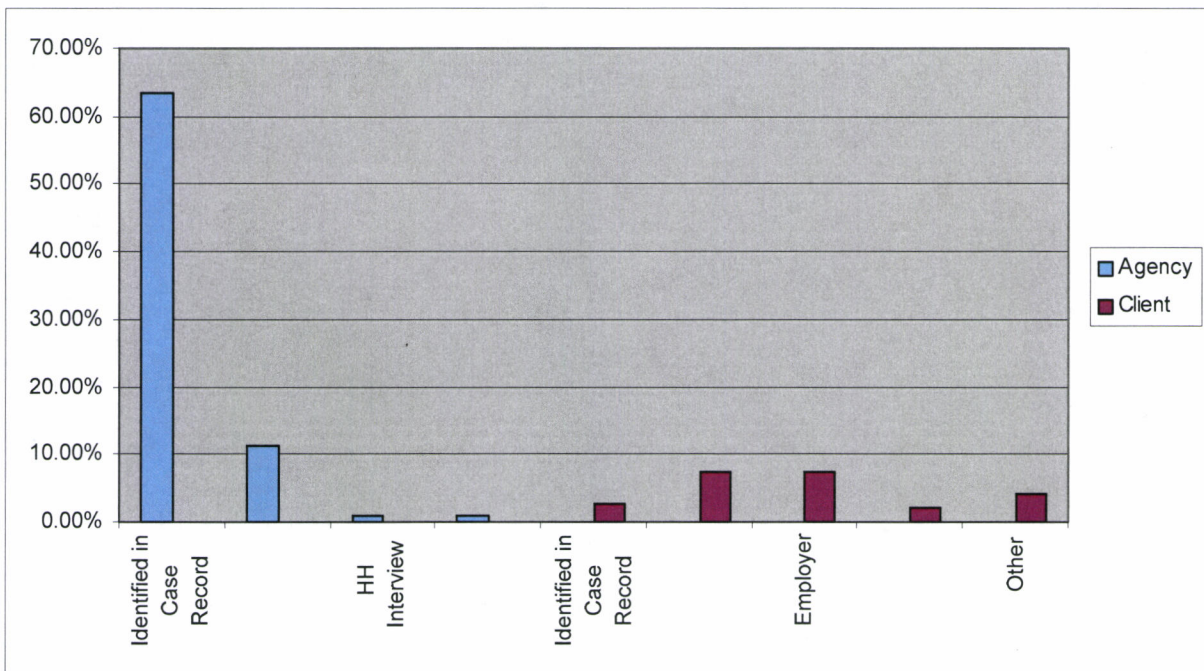


FFY 2012 Trends Continued

(October 2011 through August 23, 2012)

Payment Error by Discovery:

	Agency	Client
Identified in Case Record	63.44%	
Case Record: Auto Match	11.30%	
HH Interview	0.99%	
Gov. Agency or Public Records: Automated Match	0.90%	
Identified in Case Record		2.53%
HH Interview		7.32%
Employer		7.36%
Gov. Agency or Public Records		2.08%
Other		4.10%



FFY 2012 SNAP Active Case Review as of August 23, 2012

Federal Payment Error Rate (official):

County	Complete	Errors	Case Error Rate	COUPON ALLOTMENT	DOLLARS IN ERROR	ERROR RATE (PER)	CBMS Errors	\$ in Error	County Error Rate
Adams	74	5	6.76%	\$21,159	\$771	3.64%			
Alamosa	4	1	25.00%	\$1,606	\$87	5.42%			
Arapahoe	66	8	12.12%	\$19,947	\$1,428	7.16%	1	\$177	6.27%
Archuleta	2	0	0.00%	\$891	0	0.00%			
Baca	1		0.00%	\$16		0.00%			
Bent									
Boulder	35	4	11.43%	\$7,571	\$511	6.75%	1	\$55	6.02%
Broomfield	7	0	0.00%	\$1,872	0	0.00%			
Chaffee	1	0	0.00%	\$135	\$0	0.00%			
Cheyenne									
Clear Creek	5	1	20.00%	\$1,052	\$58	5.51%			
Conejos	3	0	0.00%	\$412		0.00%			
Costilla	2	0	0.00%	\$97	\$0	0.00%			
Crowley	1		0.00%	\$381		0.00%			
Custer	1		0.00%	\$526		0.00%			
Delta	10	0	0.00%	\$2,822	\$0	0.00%			
Denver	141	12	8.51%	\$40,112	\$1,199	2.99%			
Dolores									
Douglas	7	0	0.00%	\$1,879	0	0.00%			
Eagle									
Elbert	2		0.00%	\$691		0.00%			
El Paso	77	8	10.39%	\$23,325	\$760	3.26%	1	\$168	2.54%
Fremont	2		0.00%	\$526		0.00%			
Garfield	8	1	12.50%	\$1,339	\$129	9.63%			
Gilpin									
Grand	1	1	100.00%	\$614	\$120	19.54%			
Gunnison	1		0.00%	\$526					
Hinsdale									
Huerfano	1	0	0.00%	\$50	0	0.00%			
Jackson	2		0.00%	\$385		0.00%			
Jefferson	51	4	7.84%	\$16,109	\$619	3.84%			
Kiowa	1		0.00%	\$526		0.00%			
Kit Carson									
Lake									
La Plata	7	0	0.00%	\$1,774	0	0.00%			
Larimer	32	5	15.63%	\$9,832	\$571	5.81%			
Las Animas	8	0	0.00%	\$1,645	0	0.00%			
Lincoln									
Logan	1	0	0.00%	\$358	0	0.00%			
Mesa	31	1	3.23%	\$7,126	\$212	2.98%	1	\$212	0.00%
Mineral									
Moffat	2		0.00%	\$772		0.00%			
Montezuma	5	0	0.00%	\$1,337	\$0	0.00%			
Montrose	10	0	0.00%	\$1,869	\$0	0.00%			
Morgan	1		0.00%	\$81		0.00%			
Otero	2	0	0.00%	\$566	0	0.00%			

County	Complete	Errors	Case Error Rate	COUPON ALLOTMENT	DOLLARS IN ERROR	ERROR RATE	CBMS Errors	\$ in Error	County Error Rate
Ouray	1		0.00%	\$200		0.00%			
Park	3		0.00%	\$1,228		0.00%			
Phillips									
Pitkin	1	0	0.00%	\$367	0	0.00%			
Prowers	4	0	0.00%	\$1,053	\$0	0.00%			
Pueblo	50	3	6.00%	\$15,035	\$482	3.21%			
Rio Blanco									
Rio Grande									
Routt	2	1	50.00%	\$1,374	\$1,052	76.56%			
Saguache	3	0	0.00%	\$600	\$0	0.00%			
San Juan	1		0.00%	\$367		0.00%			
San Miguel			#DIV/0!						
Sedgwick									
Summit	2	2	100.00%	\$473	\$192	40.59%			
Teller	2		0.00%	\$473		0.00%			
Washington	1	0	0.00%	\$367	0	0.00%			
Weld	29	4	13.79%	\$8,326	\$618	7.42%			
Yuma	1	0	0.00%	\$236	0	0.00%			
TOTAL	705	61	8.65%	\$200,028	\$8,809	4.40%	4	\$612	4.10%

It is critical that counties with a payment error rate in excess of 3.5% take measures to reduce the payment error rate in the county in order to ensure payment accuracy and that the state as a whole meets or exceeds a Payment Error Rate of less than the National Average.

FFY 2012 SNAP Active Case Review as of August 23, 2012

Combined Payment Error Rate:

County	Complete	\$> Threshold (PER)	\$< Threshold	Case Error Rate	COUPON ALLOTMENT	DOLLARS IN ERROR	Threshold \$ Errors	ERROR RATE
Adams	74	5	10	20.27%	\$21,159	\$771	\$200	4.59%
Alamosa	4	1	0	25.00%	\$1,606	\$87		5.42%
Arapahoe	66	8	8	24.24%	\$19,947	\$1,428	\$169	8.01%
Archuleta	2	0	1	50.00%	\$891	0	\$10	1.12%
Baca	1			0.00%	\$16			0.00%
Bent				#DIV/0!				
Boulder	35	4	7	31.43%	\$7,571	\$511	\$153	8.77%
Broomfield	7	0		0.00%	\$1,872	0		0.00%
Chaffee	1	0		0.00%	\$135	\$0		0.00%
Cheyenne				#DIV/0!				
Clear Creek	5	1		20.00%	\$1,052	\$58		5.51%
Conejos	3	0		0.00%	\$412			0.00%
Costilla	2	0		0.00%	\$97	\$0		0.00%
Crowley	1			0.00%	\$381			0.00%
Custer	1			0.00%	\$526			0.00%
Delta	10	0		0.00%	\$2,822	\$0		0.00%
Denver	141	12	20	22.70%	\$40,112	\$1,199	\$371	3.91%
Dolores				#DIV/0!				
Douglas	7	0	2	28.57%	\$1,879	0	\$32	1.70%
Eagle				#DIV/0!				
Elbert	2			0.00%	\$691			0.00%
El Paso	77	8	12	25.97%	\$23,325	\$760	\$195	4.09%
Fremont	2			0.00%	\$526			0.00%
Garfield	8	1	3	50.00%	\$1,339	\$129	\$33	12.10%
Gilpin				#DIV/0!				
Grand	1	1		100.00%	\$614	\$120		19.54%
Gunnison	1			0.00%	\$526			0.00%
Hinsdale				#DIV/0!				#DIV/0!
Huerfano	1	0		0.00%	\$50	0		0.00%
Jackson	2		1	50.00%	\$385		\$43	11.17%
Jefferson	51	4	11	29.41%	\$16,109	\$619	\$234	5.30%
Kiowa	1			0.00%	\$526			0.00%
Kit Carson				#DIV/0!				
Lake				#DIV/0!				
La Plata	7	0	2	28.57%	\$1,774	0	\$46	2.59%
Larimer	32	5	1	18.75%	\$9,832	\$571	\$48	6.30%
Las Animas	8	0	1	12.50%	\$1,645	0	\$17	1.03%
Lincoln				#DIV/0!				
Logan	1	0		0.00%	\$358	0		0.00%
Mesa	31	1	6	22.58%	\$7,126	\$212	\$151	5.09%
Mineral				#DIV/0!				#DIV/0!
Moffat	2			0.00%	\$772			0.00%
Montezuma	5	0		0.00%	\$1,337	\$0		0.00%
Montrose	10	0	1	10.00%	\$1,869	\$0	\$5	0.27%
Morgan	1			0.00%	\$81			0.00%
Otero	2	0		0.00%	\$566	0		0.00%

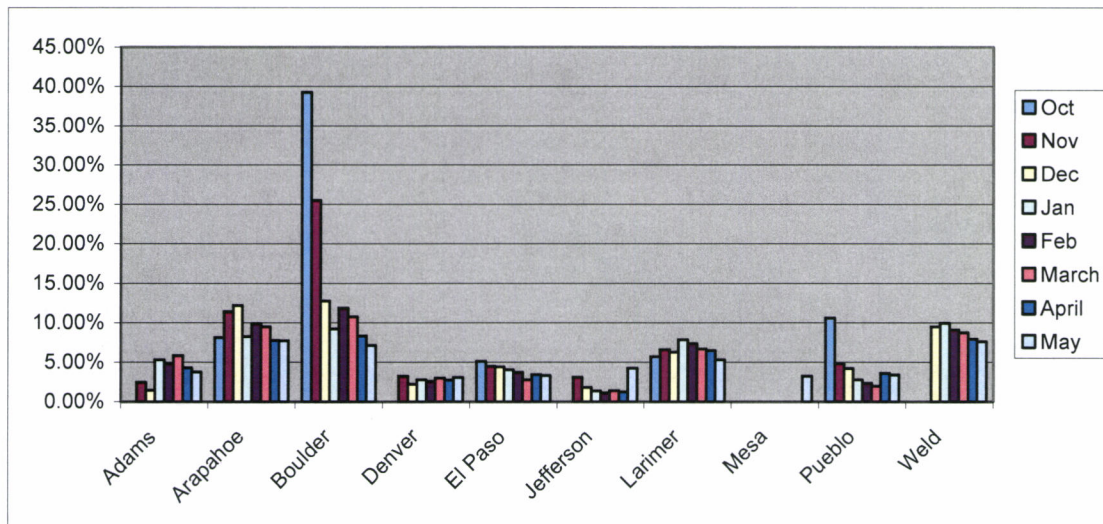
County	Complete	Errors	\$< Threshold	Case Error Rate	COUPON ALLOTMENT	DOLLARS IN ERROR	Threshold \$ Errors	ERROR RATE
Ouray	1			0.00%	\$200			0.00%
Park	3			0.00%	\$1,228			0.00%
Phillips				#DIV/0!				#DIV/0!
Pitkin	1	0		0.00%	\$367	0		0.00%
Prowers	4	0	2	50.00%	\$1,053	\$0	\$37	3.51%
Pueblo	50	3	11	28.00%	\$15,035	\$482	\$246	4.84%
Rio Blanco				#DIV/0!				#DIV/0!
Rio Grande				#DIV/0!				#DIV/0!
Routt	2	1	1	100.00%	\$1,374	\$1,052	\$15	77.66%
Saguache	3	0	1	33.33%	\$600	\$0	\$35	5.83%
San Juan	1			0.00%	\$367			0.00%
San Miguel				#DIV/0!				#DIV/0!
Sedgwick				#DIV/0!				#DIV/0!
Summit	2	2		100.00%	\$473	\$192		40.59%
Teller	2			0.00%	\$473			0.00%
Washington	1	0		0.00%	\$367	0		0.00%
Weld	29	4	3	24.14%	\$8,326	\$618	\$76	8.34%
Yuma	1	0		0.00%	\$236	0		0.00%
TOTAL	705	61	104	23.40%	\$200,028	\$8,809	\$2,116	5.46%

FFY 2012 SNAP Active Case Review as of August 23, 2012

Big 10 Counties

Cumulative

Month	County										TOTAL
	Adams	Arapahoe	Boulder	Denver	El Paso	Jefferson	Larimer	Mesa	Pueblo	Weld	
Oct-11											
Complete	8	11	3	12	5	7	4	4	5	4	63
Errors	0	1	2	0	1	0	1	0	1	0	6
PER	0.00%	8.14%	39.27%	0.00%	5.09%	0.00%	5.71%	0.00%	10.62%	0.00%	4.67%
Nov-11											
Complete	17	16	6	23	18	13	7	8	14	8	130
Errors	1	2	2	3	3	1	2	0	2	0	16
PER	2.49%	11.43%	25.51%	3.25%	4.50%	3.13%	6.59%	0.00%	4.83%	0.00%	4.90%
Dec-11											
Complete	27	21	11	39	25	21	11	13	18	16	202
Errors	1	4	2	3	5	1	3	0	2	2	23
PER	1.47%	12.19%	12.76%	2.22%	4.41%	1.83%	6.29%	0.00%	4.21%	9.52%	4.76%
Jan-12											0
Complete	36	30	15	53	35	27	17	13	26	19	271
Errors	3	4	2	4	6	1	4	0	2	3	29
PER	5.32%	8.28%	9.24%	2.79%	4.05%	1.38%	7.86%	0.00%	2.79%	9.95%	4.78%
Feb-12											0
Complete	42	40	19	76	40	31	18	16	33	20	335
Errors	3	6	4	5	6	1	4	0	2	3	34
PER	4.83%	9.94%	11.85%	2.60%	3.74%	1.14%	7.38%	0.00%	2.33%	9.13%	4.73%
Mar-12											0
Complete	49	47	21	92	55	38	21	19	37	23	402
Errors	5	7	4	7	6	2	4	0	2	4	41
PER	5.84%	9.51%	10.79%	2.99%	2.80%	1.43%	6.70%	0.00%	1.99%	8.74%	4.52%
Apr-12											0
Complete	61	55	26	112	69	43	23	24	42	26	481
Errors	5	7	4	9	8	2	4	0	3	4	46
PER	4.30%	7.76%	8.33%	2.74%	3.43%	1.25%	6.49%	0.00%	3.60%	7.94%	4.15%
May-12											0
Complete	70	61	31	126	74	48	28	27	46	28	539
Errors	5	8	4	11	8	4	4	1	3	4	52
PER	3.78%	7.73%	7.11%	3.08%	3.33%	4.26%	5.32%	3.24%	3.39%	7.61%	4.43%



FY 2012 SNAP Negative Case Review as of August 23, 2012

County	Complete	Errors	Neg Case Error Rate	CBMS/ NOAA Errors	County Error Rate
Adams	57	43	75.44%	24	33.33%
Alamosa	4	2	50.00%	2	0.00%
Arapahoe	105	75	71.43%	40	33.33%
Archuleta			#DIV/0!		#DIV/0!
Baca					
Bent	1	1	100.00%	1	0.00%
Boulder	32	21	65.63%	12	28.13%
Broomfield	5	3	60.00%	2	20.00%
Chaffee	6	5	83.33%		83.33%
Cheyenne					
Clear Creek					
Conejos	1	1	100.00%		100.00%
Costilla					
Crowley	1	0	0.00%		0.00%
Custer					
Delta	3	3	100.00%	1	66.67%
Denver	128	85	66.41%	34	39.84%
Dolores					
Douglas	10	8	80.00%	5	30.00%
Eagle	2	2	100.00%	2	0.00%
El Paso	104	77	74.04%	34	41.35%
Elbert	2	2	100.00%	1	50.00%
Fremont	12	8	66.67%	4	33.33%
Garfield	6	5	83.33%	3	33.33%
Gilpin					
Grand	1	1	100.00%	1	0.00%
Gunnison					
Hinsdale					
Huerfano	1	1	100.00%		100.00%
Jackson					
Jefferson	51	38	74.51%	16	43.14%
Kiowa					
Kit Carson					
Lake	1		0.00%		0.00%
La Plata	9	4	44.44%	3	11.11%
Larimer	31	16	51.61%	10	19.35%
Las Animas	6	3	50.00%	2	16.67%
Lincoln					
Logan	5	4	80.00%	3	20.00%
Mesa	21	15	71.43%	9	28.57%
Mineral					
Moffat	4	3	75.00%	3	0.00%
Montezuma	3	1	33.33%		33.33%
Montrose	7	4	57.14%	3	14.29%
Morgan	7	5	71.43%	2	42.86%
Otero	4	3	75.00%	1	50.00%

County	Complete	Errors	Neg Case Error Rate	CBMS/NOAA Errors	County Error Rate
Ouray					
Park					
Phillips					
Pitkin	2	2	100.00%		100.00%
Prowers	2	2	100.00%	2	0.00%
Pueblo	32	19	59.38%	13	18.75%
Rio Blanco					
Rio Grande	5	4	80.00%	2	40.00%
Routt	1	1	100.00%		100.00%
Saguache	1	1	100.00%		100.00%
San Juan					
San Miguel	2	2	100.00%	1	50.00%
Sedgwick	1	1	100.00%		100.00%
Summit					
Teller	4	3	75.00%	2	25.00%
Washington					
Weld	45	26	57.78%	16	22.22%
Yuma					
TOTAL	725	500	68.97%	254	33.93%

NOTE: The County Error Rate determination is based on a manual process and displays approximately a 1-month delay. The blue columns reflect the data transmitted to the Federal Office and it takes up to 1 additional month after the Federal data is posted to fully review each file for responsible party for the error (i.e., state or county). This means the county error rate is accurate only for the point in time and does not reflect any of the outstanding reviews. **Based on the reviews to date, approximately 50.39% of the errors are the responsibility of the State.**

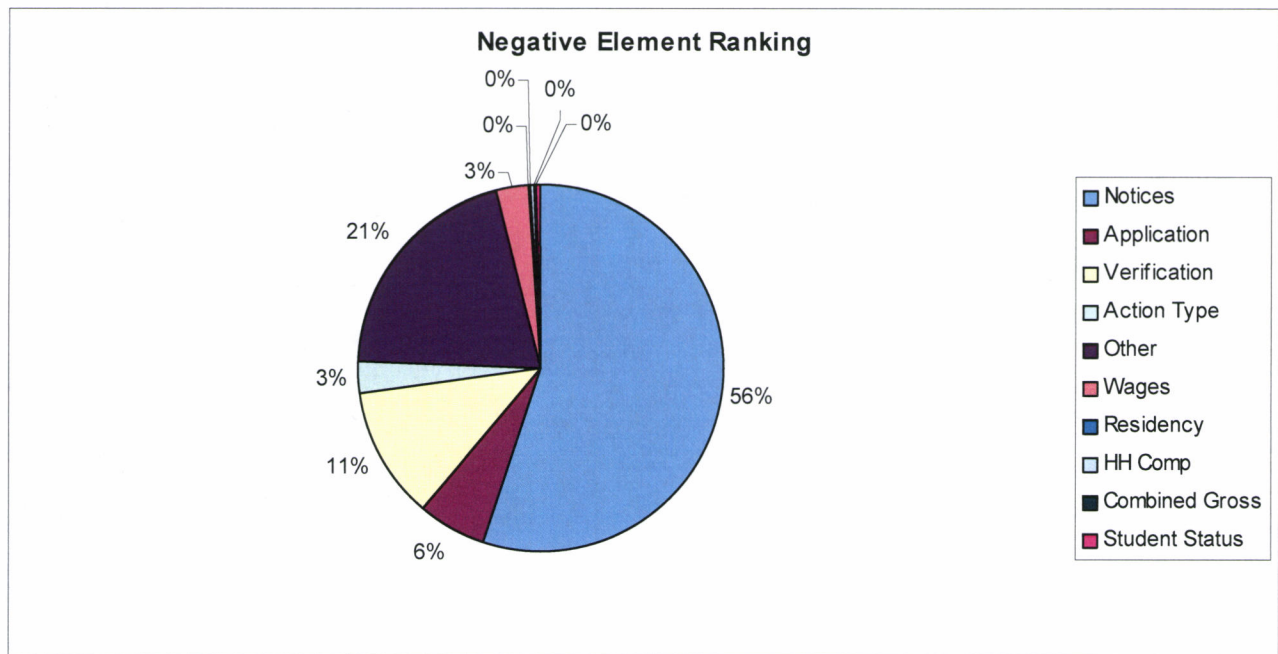
NOTE 2: As of August 22, 2012, duplicate Adverse Action Notices are being suppressed; therefore, it is likely that the number and percentage of error cited as a state responsibility will significantly decrease.

FFY 2012 Negative Error Trends

(October 2011 through August 23, 2012)

Negative Error Ranking:

Element	Invalid #	% Of total
Notices	254	55.10%
Application	28	6.07%
Verification	53	11.50%
Action Type	13	2.82%
Other	95	20.61%
Wages	13	2.82%
Residency	1	0.22%
HH Comp	2	0.43%
Combined Gross	1	0.22%
Student Status	1	0.22%
TOTAL	461	100.00%



FFY 2012 Negative Error Trends

(October 2011 through August 23, 2012)

Negative Error Causes:

ERROR CAUSES	# Cases	% Cases
Notice not clearly understandable	119	23.80%
Notice did not include date of intended action	80	16.00%
Policy incorrectly applied	44	8.80%
Data entry and/or coding error (includes selection of incorrect codes)	44	8.80%
Notice reason does not match reason for action	38	7.60%
Computer programming error	26	5.20%
Improper Denial/Termination - failure to provide - verification was received or is in case file	24	4.80%
Computer user error (Improper use of system or unauthorized process or work around)	15	3.00%
Income from known/processed source included that should not have been	10	2.00%
Late denial agency failed to process the application timely	9	1.80%
Failed to process the reapplication timely (recertification application)	9	1.80%
Notice was not complete	8	1.60%
Improper termination or suspension for failure to meet reporting requirements	8	1.60%
Improper denial prior to end of timeframe for providing verification	7	1.40%
Improper denial within 30-day period for missing interview(s)	6	1.20%
Other	6	1.20%
Improper income calculation	5	1.00%
Failed to consider or incorrectly considered reported information	3	0.60%
Improper Denial/Termination - failure to provide - household not given at least 10 days to provide	3	0.60%
Improper Denial/Termination - failure to provide - case should have been processed without the deduction	3	0.60%
Notice was sent to wrong address	3	0.60%

SNAP Federal Timeliness of August 23, 2012

County	TIMELY (Reg and EXP)		NOT TIMELY (Reg and EXP)		OTHER (Prior to FFY)		TIMELINESS TOTAL		% OF STATE TOTAL CASES REVIEWED	% OF STATE TIMELINESS RATE
	#	% of Sample	#	% of Sample	#	% of Sample	TOTAL CASES	TIMELINESS RATE		
Adams	21	26.92%	3	3.85%	54	69.23%	78	87.50%	10.26%	11.05%
Alamosa	0	0.00%	0	0.00%	4	100.00%	4		0.53%	0.00%
Arapahoe	14	20.29%	1	1.45%	54	78.26%	69	93.33%	9.08%	7.37%
Archuleta	2	100.00%	0	0.00%	0	0.00%	2	100.00%	0.26%	1.05%
Baca	1	100.00%	0	0.00%	0	0.00%	1	100.00%	0.13%	0.53%
Boulder	11	30.56%	2	5.56%	23	63.89%	36	84.62%	4.74%	5.79%
Broomfield	2	28.57%	0	0.00%	5	71.43%	7	100.00%	0.92%	1.05%
Chaffee	0	0.00%	0	0.00%	2	100.00%	2		0.26%	0.00%
Clear Creek	1	20.00%	0	0.00%	4	80.00%	5	100.00%	0.66%	0.53%
Conejos	0	0.00%	0	0.00%	3	100.00%	3		0.39%	0.00%
Costilla	0	0.00%	0	0.00%	3	100.00%	3		0.39%	0.00%
Crowley	1	100.00%	0	0.00%	0	0.00%	1	100.00%	0.13%	0.53%
Custer	0	0.00%	0	0.00%	1	100.00%	1		0.13%	0.00%
Delta	1	10.00%	0	0.00%	9	90.00%	10	100.00%	1.32%	0.53%
Denver	27	17.76%	7	4.61%	118	77.63%	152	79.41%	20.00%	14.21%
Douglas	3	42.86%	0	0.00%	4	57.14%	7	100.00%	0.92%	1.58%
Elbert	0	0.00%	0	0.00%	2	100.00%	2		0.26%	0.00%
El Paso	29	33.72%	3	3.49%	54	62.79%	86	90.63%	11.32%	15.26%
Fremont	0	0.00%	0	0.00%	3	100.00%	3		0.39%	0.00%
Garfield	1	12.50%	0	0.00%	7	87.50%	8	100.00%	1.05%	0.53%
Grand	0	0.00%	0	0.00%	1	100.00%	1		0.13%	0.00%
Gunnison	1	100.00%	0	0.00%	0	0.00%	1	100.00%	0.13%	0.53%
Huerfano	1	100.00%	0	0.00%	0	0.00%	1	100.00%	0.13%	0.53%
Jackson	0	0.00%	0	0.00%	2	100.00%	2		0.26%	0.00%
Jefferson	13	23.64%	2	3.64%	40	72.73%	55	86.67%	7.24%	6.84%

SNAP Federal Timeliness of August 23, 2012

County	TIMELY (Reg and EXP)		NOT TIMELY (Reg and EXP)		OTHER (Prior to FFY)		TIMELINESS TOTAL		% OF STATE TOTAL CASES REVIEWED	% OF STATE TIMELINESS RATE
	#	% of Sample	#	% of Sample	#	% of Sample	TOTAL CASES	TIMELINESS RATE		
Kiowa	0	0.00%	0	0.00%	1	100.00%	1		0.13%	0.00%
La Plata	1	14.29%	0	0.00%	6	85.71%	7	100.00%	0.92%	0.53%
Larimer	10	29.41%	1	2.94%	23	67.65%	34	90.91%	4.47%	5.26%
Las Animas	2	25.00%	1	12.50%	5	62.50%	8	66.67%	1.05%	1.05%
Logan	0	0.00%	0	0.00%	1	100.00%	1		0.13%	0.00%
Mesa	8	22.86%	0	0.00%	27	77.14%	35	100.00%	4.61%	4.21%
Moffat	0	0.00%	1	50.00%	1	50.00%	2	0.00%	0.26%	0.00%
Montezuma	0	0.00%	0	0.00%	6	100.00%	6		0.79%	0.00%
Montrose	3	30.00%	0	0.00%	7	70.00%	10	100.00%	1.32%	1.58%
Morgan	1	100.00%	0	0.00%	0	0.00%	1	100.00%	0.13%	0.53%
Otero	1	33.33%	0	0.00%	2	66.67%	3	100.00%	0.39%	0.53%
Ouray	1	100.00%	0	0.00%	0	0.00%	1	100.00%	0.13%	0.53%
Park	0	0.00%	1	33.33%	2	66.67%	3	0.00%	0.39%	0.00%
Pitken	0	0.00%	0	0.00%	1	100.00%	1		0.13%	0.00%
Prowers	1	25.00%	0	0.00%	3	75.00%	4	100.00%	0.53%	0.53%
Pueblo	19	31.67%	1	1.67%	40	66.67%	60	95.00%	7.89%	10.00%
Rio Blanco	1	100.00%	0	0.00%	0	0.00%	1	100.00%	0.13%	0.53%
Routt	1	50.00%	0	0.00%	1	50.00%	2	100.00%	0.26%	0.53%
Saguache	1	33.33%	0	0.00%	2	66.67%	3	100.00%	0.39%	0.53%
San Juan	0	0.00%	0	0.00%	1	100.00%	1		0.13%	0.00%
Summit	0	0.00%	0	0.00%	2	100.00%	2		0.26%	0.00%
Teller	2	66.67%	0	0.00%	1	33.33%	3	100.00%	0.39%	1.05%
Washington	0	0.00%	0	0.00%	1	100.00%	1		0.13%	0.00%
Weld	9	31.03%	0	0.00%	20	68.97%	29	100.00%	3.82%	4.74%
Yuma	0	0.00%	0	0.00%	1	100.00%	1		0.13%	0.00%
TOTAL	190	25.00%	23	3.03%	547	71.97%	760	89.20%	100%	100%