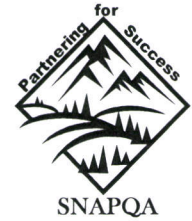




Colorado Department of Human Services  
people who help people

Colorado State Department of Human Services  
Office of Performance and Strategic Outcomes  
SNAP Quality Assurance



**COLORADO SNAP QUALITY CONTROL  
POINT-IN-TIME SUMMARY REPORT  
FEDERAL FISCAL YEAR 2012**  
(June 21, 2012)

**NATIONAL:**

National Average Active = 3.12%  
National Colorado Ranking = 36 out of 53  
Mountain Plains Region Ranking = 7 out of 10

National Average Negative = 20.78%  
National Colorado Ranking = 53 out of 53  
Mountain Plains Region Ranking = 10

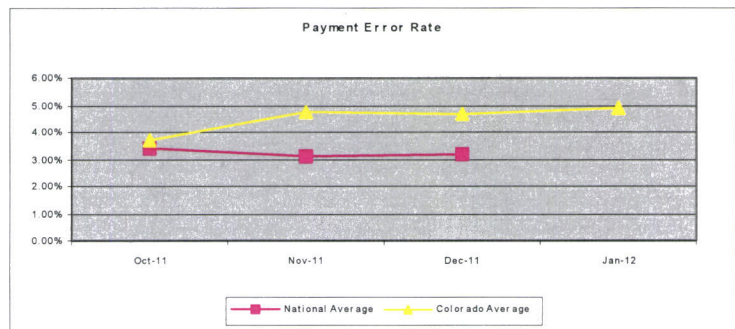
**STATE:**

Active Case Error Rate = **8.55%**

Active Error Rate = **4.22%**

Target Goal = 3%

- Total Cases Reviewed = 538
- Total Cases with Errors = 46
- Total Issuance = \$153,661
- Total Misspent = \$5,827

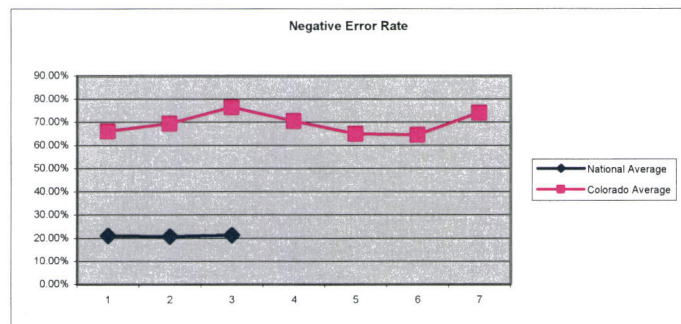


Negative Error Rate = **68.56%**

Target Goal = 25%

- Total Cases Reviewed = 668
- Total Invalid = 458

**Negative Error Rate without  
CBMS or NOAA Errors = 33.13%**



**FEDERAL TIMELINESS:**

State = 89.58%(Regular and EXP only)

NOTE: All reviews for Oct 2011 through February 2012 have been submitted and data is less likely to change. Reviews for March 2012 forward are still in the process and this data will change.

## FFY 2012 Trends

(October 2011 through June 21, 2012)

Payment Error by Element:

County	Income							Deductions				Other			TOTAL	
	Earned \$	Child Support \$	RSDI \$	SSI \$	TANF	UIB \$	Other \$	Child Support	Medical	Shelter	Utilities	HH Comp	Student Status	Other	Agency	Client
<b>Adams</b>																
Agency		\$120				\$145					\$118	\$87			\$470	
Client	\$301															\$301
<b>Arapahoe</b>																
Agency					\$177	\$694				\$109					\$980	
Client	\$235									\$54						\$289
<b>Boulder</b>																
Agency		\$55													\$55	
Client	\$223									\$233						\$456
<b>Denver</b>																
Agency	\$180										\$77	\$327			\$584	
Client												\$119				\$119
<b>El Paso</b>																
Agency	\$31	\$77								\$109		\$125			\$342	
Client	\$177															\$177
<b>Jefferson</b>																
Agency										\$161					\$161	
Client																\$0
<b>Larimer</b>																
Agency							\$91			\$59			\$200		\$350	
Client	\$96															\$96
<b>Mesa</b>																
Agency															\$0	
Client																\$0
<b>Pueblo</b>																
Agency				\$152							\$91				\$243	
Client																\$0
<b>Weld</b>																
Agency							79								\$79	
Client	447	92														\$539
<b>Big 10 Total</b>	<b>\$1,690</b>	<b>\$344</b>	<b>\$0</b>	<b>\$152</b>	<b>\$177</b>	<b>\$839</b>	<b>\$170</b>	<b>\$0</b>	<b>\$0</b>	<b>\$725</b>	<b>\$286</b>	<b>\$658</b>	<b>\$200</b>	<b>\$0</b>	<b>\$3,264</b>	<b>\$1,977</b>
<b>BIG 10 Grand</b>	<b>\$5,241</b>															
<b>All Others</b>																
Agency	\$145					\$98	\$94			\$120					\$457	
Client	\$129															\$129
<b>All Others</b>	<b>\$274</b>	<b>\$0</b>	<b>\$0</b>	<b>\$0</b>	<b>\$0</b>	<b>\$98</b>	<b>\$94</b>	<b>\$0</b>	<b>\$0</b>	<b>\$120</b>	<b>\$0</b>	<b>\$0</b>	<b>\$0</b>	<b>\$0</b>	<b>\$457</b>	<b>\$129</b>
<b>Statewide</b>	<b>\$1,964</b>	<b>\$344</b>	<b>\$0</b>	<b>\$152</b>	<b>\$177</b>	<b>\$937</b>	<b>\$264</b>	<b>\$0</b>	<b>\$0</b>	<b>\$845</b>	<b>\$286</b>	<b>\$658</b>	<b>\$200</b>	<b>\$0</b>	<b>\$3,721</b>	<b>\$2,106</b>

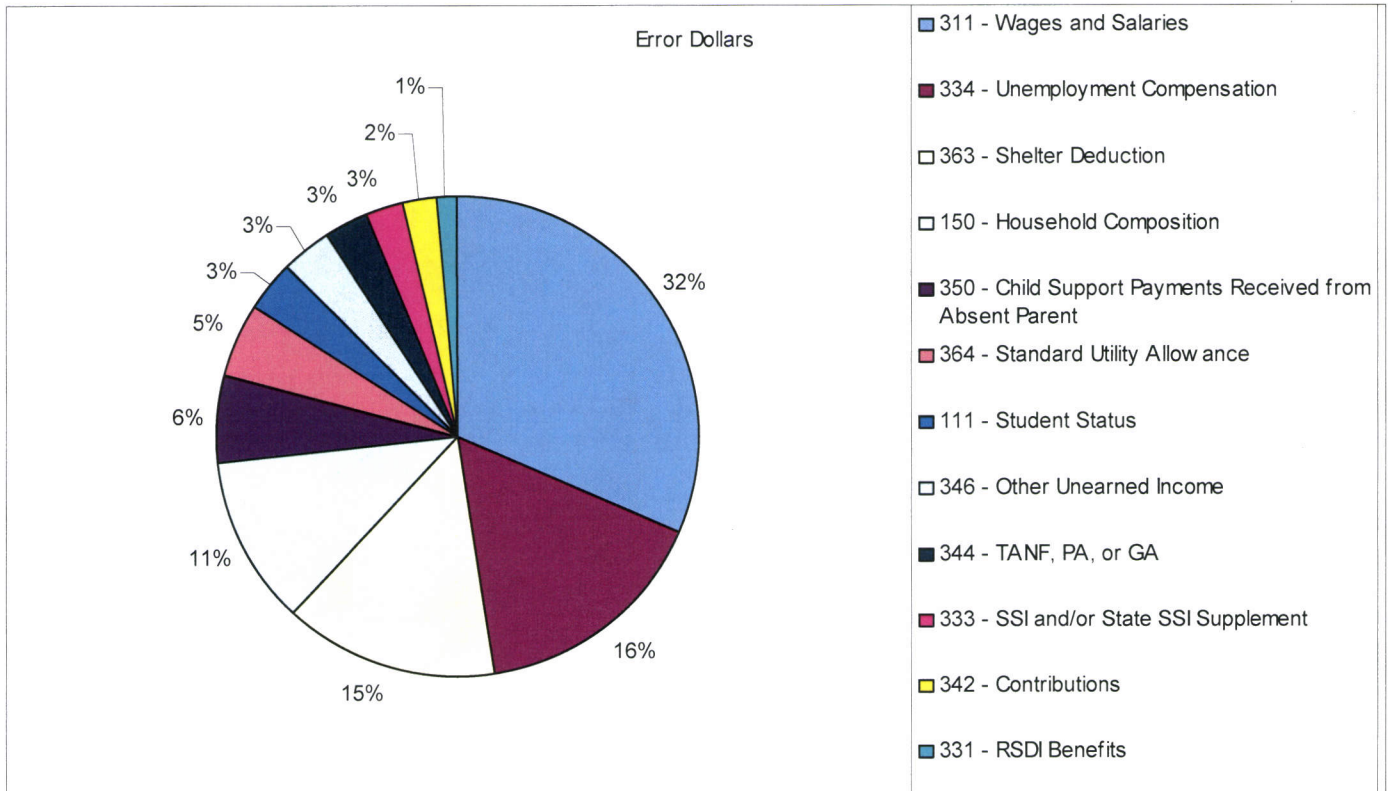


# FFY 2012 Trends Continued

(October 2011 through June 21, 2012)

Payment Error Rank by Cost:

Error Elements	Error Dollars	Percent By Total	Error Cases	Percent By Total
311 - Wages and Salaries	\$1,835	31.49%	13	28.26%
334 - Unemployment Compensation	\$937	16.08%	5	10.87%
363 - Shelter Deduction	\$845	14.50%	9	19.57%
150 - Household Composition	\$658	11.29%	5	10.87%
350 - Child Support Payments Received from Absent Parent	\$344	5.90%	4	8.70%
364 - Standard Utility Allowance	\$286	4.91%	3	6.52%
111 - Student Status	\$200	3.43%	1	2.17%
346 - Other Unearned Income	\$185	3.17%	2	4.35%
344 - TANF, PA, or GA	\$177	3.04%	1	2.17%
333 - SSI and/or State SSI Supplement	\$152	2.61%	1	2.17%
342 - Contributions	\$129	2.21%	1	2.17%
331 - RSDI Benefits	\$79	1.36%	1	2.17%
<b>Totals</b>	<b>\$5,827</b>	<b>100.00%</b>	<b>46</b>	<b>100.00%</b>



# FFY 2012 Trends Continued

(October 2011 through June 21, 2012)

Payment Error Cause:

**Total Misspent \$**                      **\$5,827**  
**Total Error Cases**                      **46**

<b>AGENCY CAUSED</b>	<b># of cases</b>	<b>% of cases</b>	<b>Error Dollars</b>	<b>% of \$ Errors</b>
Info reported by collateral contact inaccurate				
Acted on incorrect Fed computer match; not required to be verified	1	2.17%	\$152	2.61%
Policy Incorrectly applied	2	4.35%	\$320	5.49%
<b>Reported info not acted upon</b>	<b>15</b>	<b>32.61%</b>	<b>\$1,770</b>	<b>30.38%</b>
Failed to follow-up on inconsistent or incomplete info	1	2.17%	\$126	2.16%
Failed to follow-up on impending changes	1	2.17%	\$145	2.49%
Failed to verify required info	1	2.17%	\$98	1.68%
CBMS Programming Error	3	6.52%	\$326	5.59%
<b>Data Entry/Coding Error</b>	<b>6</b>	<b>13.04%</b>	<b>\$659</b>	<b>11.31%</b>
Mass Change				
Math Error	1	2.17%	\$31	0.53%
Computer User Error		0.00%		0.00%
Other	2	4.35%	\$140	2.40%
<b>SUBTOTAL</b>	<b>33</b>	<b>71.74%</b>	<b>\$3,767</b>	<b>64.65%</b>
<b>CLIENT CAUSED</b>				
Fail to report	10	21.74%	\$1,433	24.59%
Incomplete or incorrect info provided		0.00%		0.00%
Info withheld	2	4.35%	\$473	8.12%
Incorrect info provided	1	2.17%	\$154	2.64%
<b>SUBTOTAL</b>	<b>13</b>	<b>28.26%</b>	<b>\$2,060</b>	<b>35.35%</b>
<b>NOT SPECIFIED</b>	<b>1</b>	<b>2.17%</b>	<b>\$96</b>	<b>1.65%</b>
<b>SUBTOTAL</b>				
<b>GRAND TOTAL</b>	<b>46</b>	<b>100.00%</b>	<b>\$5,827</b>	<b>100.00%</b>

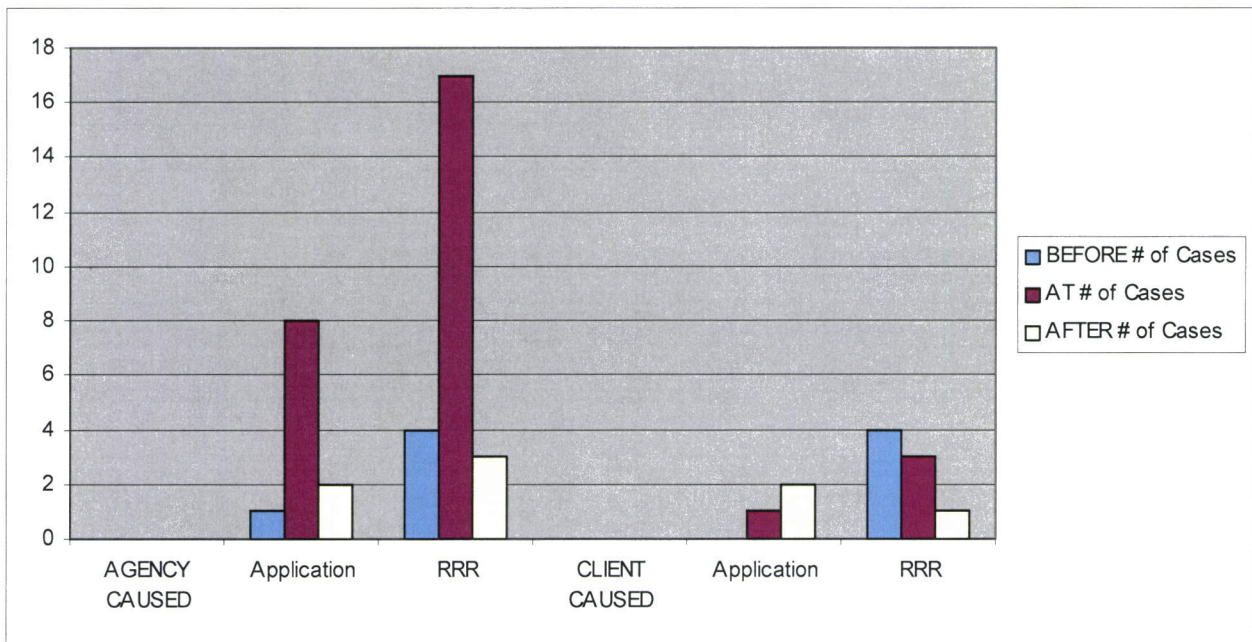


# FFY 2012 Trends Continued

(October 2011 through June 21, 2012)

Payment Error by Occurrence:

Most Recent Action	BEFORE # of Cases	AT # of Cases	AFTER # of Cases	Total
<b>AGENCY CAUSED</b>				
Application	1	8	2	11
RRR	4	17	3	24
Subtotal	5	25	5	35
<b>CLIENT CAUSED</b>				
Application		1	2	3
RRR	4	3	1	8
Subtotal	4	4	3	11
<b>Grand Total</b>	<b>9</b>	<b>29</b>	<b>8</b>	<b>46</b>

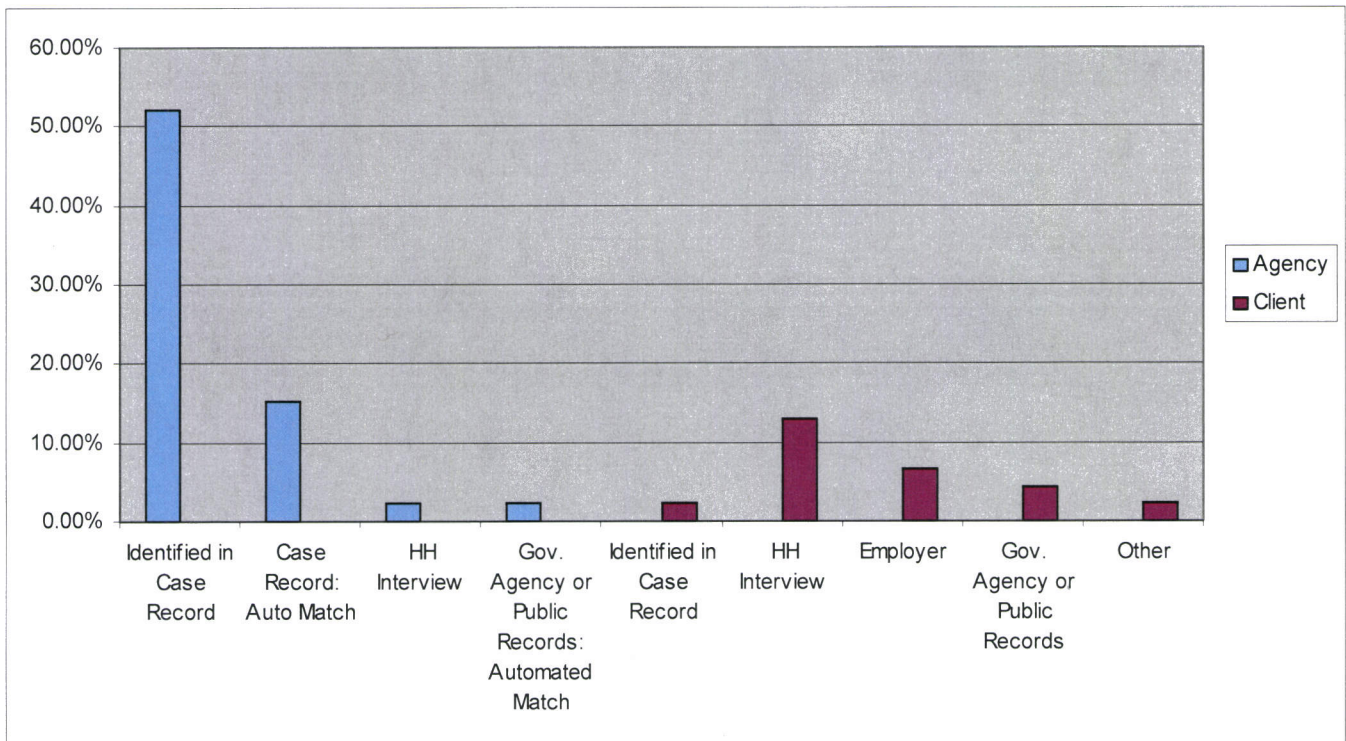


# FFY 2012 Trends Continued

(October 2011 through June 21, 2012)

Payment Error by Discovery:

	Agency	Client
Identified in Case Record	52.17%	
Case Record: Auto Match	15.22%	
HH Interview	2.17%	
Gov. Agency or Public Records: Automated Match	2.17%	
Identified in Case Record		2.17%
HH Interview		13.04%
Employer		6.52%
Gov. Agency or Public Records		4.35%
Other		2.17%



## FFY 2012 SNAP Active Case Review as of June 21, 2012

County	Complete	Errors	Case Error Rate	COUPON ALLOTMENT	DOLLARS IN ERROR	ERROR RATE	CBMS Errors	\$ in Error	County Error Rate
Adams	64	5	7.81%	\$18,161	\$771	4.25%			
Alamosa	4	1	25.00%	\$1,606	87	5.42%			
Arapahoe	52	7	13.46%	\$15,170	\$1,269	8.37%	1	\$177	7.20%
Archuleta	2	0	0.00%	\$891	0	0.00%			
Baca	1			\$16					
Bent									
Boulder	24	4	16.67%	\$5,409	\$511	9.45%	1	\$55	8.43%
Broomfield	6	0	0.00%	\$1,672	0	0.00%			
Chaffee	1	0	0.00%	\$135	\$0	0.00%			
Cheyenne									
Clear Creek	4	1	25.00%	\$685	\$58	8.47%			
Conejos	3	0	0.00%	\$412		0.00%			
Costilla	2	0	0.00%	\$97	\$0	0.00%			
Crowley									
Custer	1			\$526					
Delta	9	0	0.00%	\$2,631	\$0	0.00%			
Denver	100	6	6.00%	\$28,540	\$703	2.46%			
Dolores									
Douglas	5	0	0.00%	\$1,145	0	0.00%			
Eagle									
Elbert	2		0.00%	\$691		0.00%			
El Paso	55	6	10.91%	\$17,682	\$519	2.94%			
Fremont	1		0.00%	\$326					
Garfield	6	1	16.67%	\$1,148	\$129	11.24%			
Gilpin									
Grand	1	1	100.00%	\$614	\$120	19.54%			
Gunnison			#DIV/0!						
Hinsdale									
Huerfano	1	0	0.00%	\$50	0	0.00%			
Jackson	1		0.00%	\$126		0.00%			
Jefferson	41	2	4.88%	\$12,436	\$161	1.29%			
Kiowa	1		0.00%	\$526		0.00%			
Kit Carson									
Lake									
La Plata	6	0	0.00%	\$1,758	0	0.00%			
Larimer	20	4	20.00%	\$6,440	\$446	6.93%			
Las Animas	6	0	0.00%	\$1,417	0	0.00%			
Lincoln									
Logan	1	0	0.00%	\$358	0	0.00%			
Mesa	21	0	0.00%	\$4,706	\$0	0.00%			
Mineral									
Moffat	2		0.00%	\$772		0.00%			
Montezuma	5	0	0.00%	\$1,337	\$0	0.00%			
Montrose	9	0	0.00%	\$1,795	\$0	0.00%			
Morgan	1		0.00%	\$81		0.00%			
Otero	2	0	0.00%	\$566	0	0.00%			

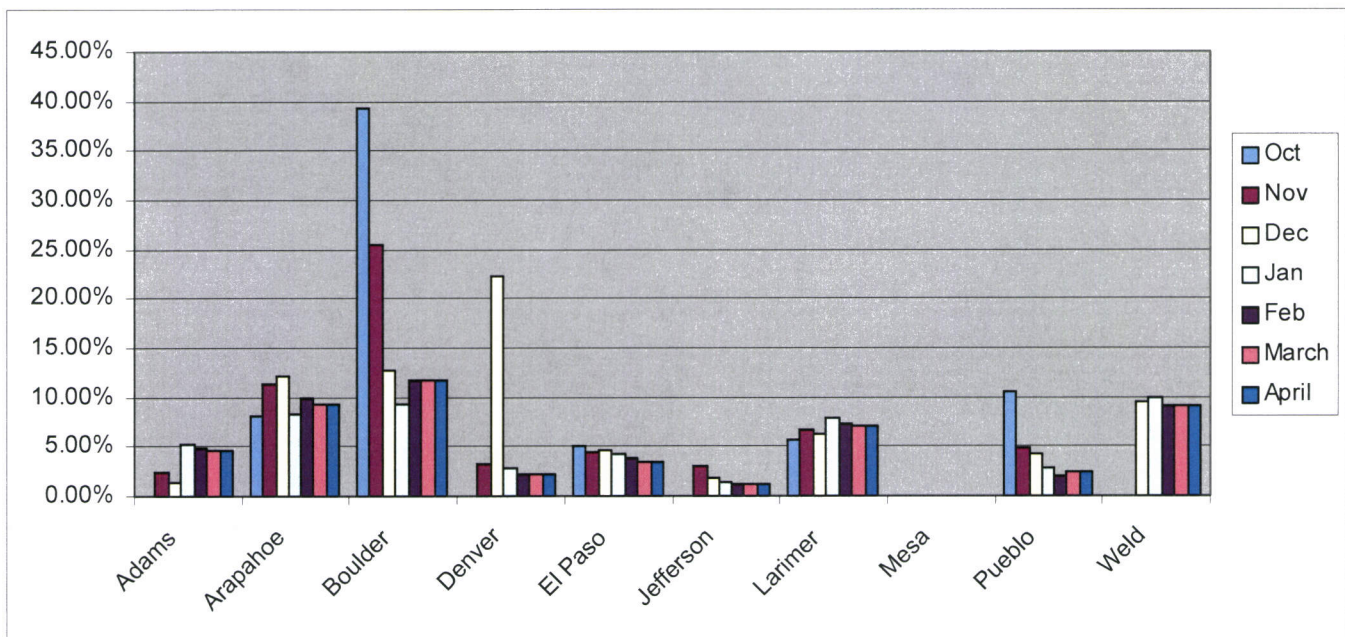


County	Complete	Errors	Case Error Rate	COUPON ALLOTMENT	DOLLARS IN ERROR	ERROR RATE	CBMS Errors	\$ in Error	County Error Rate
Ouray									
Park	2		0.00%	\$560		0.00%			
Phillips									
Pitkin	1	0	0.00%	\$367	0	0.00%			
Prowers	2	0	0.00%	\$369	\$0	0.00%			
Pueblo	40	2	5.00%	\$12,835	\$243	1.89%			
Rio Blanco									
Rio Grande									
Routt	1	0	0.00%	\$322	0	0.00%			
Saguache	3	0	0.00%	\$600	\$0	0.00%			
San Juan	1		0.00%	\$367		0.00%			
San Miguel			#DIV/0!						
Sedgwick									
Summit	2	2	100.00%	\$473	\$192	40.59%			
Teller	1		0.00%	\$172		0.00%			
Washington	1	0	0.00%	\$367	0	0.00%			
Weld	23	4	17.39%	\$7,068	\$618	8.74%			
Yuma	1	0	0.00%	\$236	0	0.00%			
<b>TOTAL</b>	<b>538</b>	<b>46</b>	<b>8.55%</b>	<b>\$153,661</b>	<b>\$5,827</b>	<b>3.79%</b>	<b>2</b>	<b>\$232</b>	<b>3.64%</b>

It is critical that counties with a payment error rate in excess of 3.5% take measures to reduce the payment error rate in the county in order to ensure payment accuracy and that the state as a whole meets or exceeds a Payment Error Rate of less than the National Average.

## FFY 2012 SNAP Active Case Review as of June 21, 2012 Big 10 Counties

Month	County										TOTAL
	Adams	Arapahoe	Boulder	Denver	El Paso	Jefferson	Larimer	Mesa	Pueblo	Weld	
<b>Oct-11</b>											
Complete	8	11	3	12	5	7	4	4	5	4	<b>63</b>
Errors	0	1	2	0	1	0	1	0	1	0	<b>6</b>
PER	0.00%	8.14%	39.27%	0.00%	5.09%	0.00%	5.71%	0.00%	10.62%	0.00%	<b>4.67%</b>
<b>Nov-11</b>											
Complete	17	16	6	23	18	13	7	8	14	8	<b>130</b>
Errors	1	2	2	3	3	1	2	0	2	0	<b>16</b>
PER	2.49%	11.43%	25.51%	3.25%	4.50%	3.13%	6.59%	0.00%	4.83%	0.00%	<b>4.90%</b>
<b>Dec-11</b>											
Complete	27	21	11	39	24	21	11	13	18	16	<b>201</b>
Errors	1	4	2	3	5	1	3	0	2	2	<b>23</b>
PER	1.47%	12.19%	12.76%	22.22%	4.59%	1.83%	6.29%	0.00%	4.21%	9.52%	<b>4.79%</b>
<b>Jan-12</b>											<b>0</b>
Complete	36	30	15	53	34	27	17	13	26	19	<b>270</b>
Errors	3	4	2	4	6	1	4	0	2	3	<b>29</b>
PER	5.32%	8.28%	9.24%	2.79%	4.17%	1.38%	7.86%	0.00%	2.79%	9.95%	<b>4.81%</b>
<b>Feb-12</b>											<b>0</b>
Complete	42	39	19	72	39	30	18	16	32	20	<b>327</b>
Errors	3	5	4	4	6	1	4	0	2	3	<b>32</b>
PER	4.83%	9.94%	11.85%	2.24%	3.84%	1.16%	7.38%	0.00%	2.00%	9.13%	<b>4.71%</b>
<b>Mar-12</b>											<b>0</b>
Complete	43	41	19	75	44	31	19	18	32	22	<b>344</b>
Errors	3	5	4	4	6	1	4	0	2	4	<b>33</b>
PER	4.75%	9.41%	11.85%	2.19%	3.49%	1.13%	7.15%	0.00%	2.42%	9.03%	<b>4.59%</b>
<b>Apr-12</b>											<b>0</b>
Complete	43	41	19	75	44	31	19	18	32	22	<b>344</b>
Errors	3	5	4	4	6	1	4	0	2	4	<b>33</b>
PER	4.75%	9.41%	11.85%	2.19%	3.49%	1.13%	7.15%	0.00%	2.42%	9.03%	<b>4.59%</b>





## FY 2012 SNAP Negative Case Review as of June 21, 2012

County	Complete	Errors	Neg Case Error Rate	CBMS/NOAA Errors	County Error Rate
Adams	56	42	75.00%	24	32.14%
Alamosa	4	2	50.00%	2	0.00%
Arapahoe	98	69	70.41%	35	34.69%
Archuleta					
Baca					
Bent	1	1	100.00%	1	0.00%
Boulder	30	21	70.00%	12	30.00%
Broomfield	4	2	50.00%	1	25.00%
Chaffee	5	5	100.00%		100.00%
Cheyenne					
Clear Creek					
Conejos	1	1	100.00%		100.00%
Costilla					
Crowley	1	0	0.00%		0.00%
Custer					
Delta	3	3	100.00%	1	66.67%
Denver	117	75	64.10%	30	38.46%
Dolores					
Douglas	9	7	77.78%	4	33.33%
Eagle	2	2	100.00%	2	0.00%
Elbert	2	2	100.00%	1	50.00%
El Paso	98	72	73.47%	30	42.86%
Fremont	7	5	71.43%		71.43%
Garfield	6	5	83.33%	3	33.33%
Gilpin					
Grand	1	1	100.00%	1	0.00%
Gunnison					
Hinsdale					
Huerfano	1	1	100.00%		100.00%
Jackson					
Jefferson	44	33	75.00%	14	43.18%
Kiowa					
Kit Carson					
Lake	1		0.00%		0.00%
La Plata	9	4	44.44%	2	22.22%
Larimer	24	13	54.17%	9	16.67%
Las Animas	6	3	50.00%	2	16.67%
Lincoln					
Logan	5	4	80.00%	3	20.00%
Mesa	19	13	68.42%	6	36.84%
Mineral					
Moffat	4	3	75.00%	3	0.00%
Montezuma	3	1	33.33%		33.33%
Montrose	7	4	57.14%	3	14.29%
Morgan	7	5	71.43%	2	42.86%
Otero	4	3	75.00%	1	50.00%



County	Complete	Errors	Neg Case Error Rate	CBMS/NOAA Errors	County Error Rate
Ouray					
Park					
Phillips					
Pitkin	2	2	100.00%		100.00%
Prowers	2	2	100.00%	1	50.00%
Pueblo	30	18	60.00%	11	23.33%
Rio Blanco					
Rio Grande	4	3	75.00%	1	50.00%
Routt	1	1	100.00%		100.00%
Saguache	1	1	100.00%		100.00%
San Juan					
San Miguel	2	2	100.00%	1	50.00%
Sedgwick	1	1	100.00%		100.00%
Summit					
Teller	4	3	75.00%	2	25.00%
Washington					
Weld	42	23	54.76%	14	21.43%
Yuma					
<b>TOTAL</b>	<b>668</b>	<b>458</b>	<b>68.56%</b>	<b>222</b>	<b>35.33%</b>

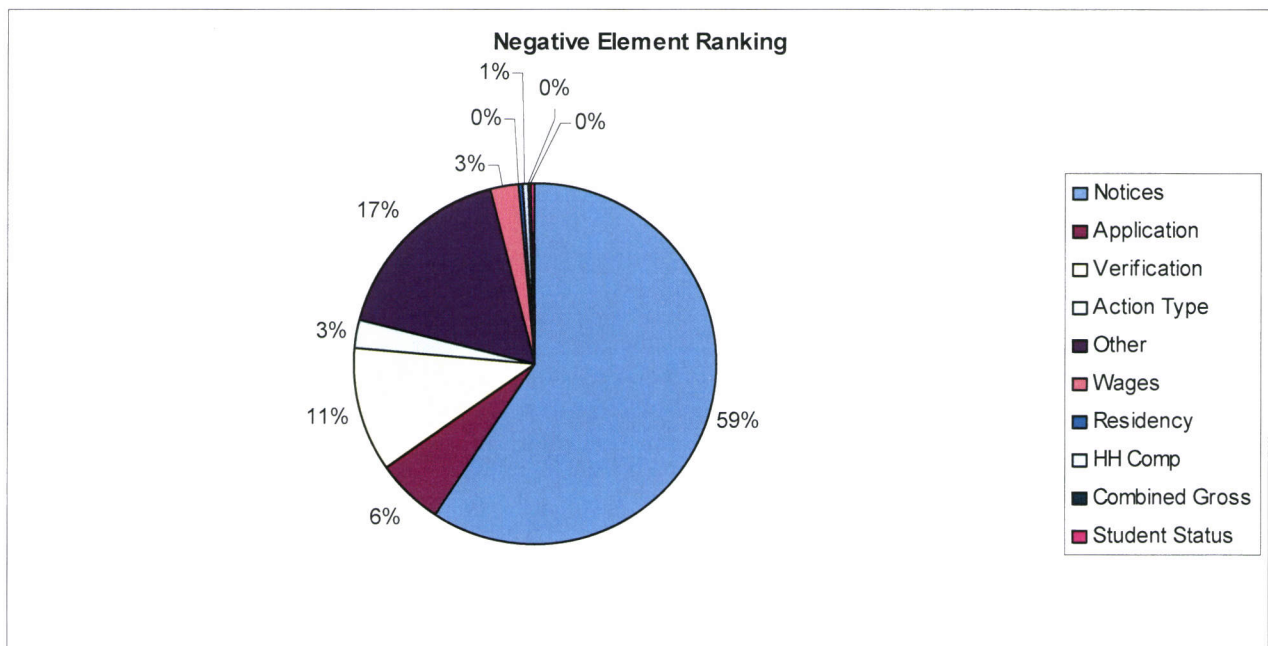
NOTE: The County Error Rate determination is based on a manual process and displays approximately a 1-month delay. The blue columns reflect the data transmitted to the Federal Office and it takes up to 1 additional month after the Federal data is posted to fully review each file for responsible party for the error (i.e., state or county). This means the county error rate is accurate only for the point in time and does not reflect any of the outstanding reviews. **Based on the reviews to date, approximately 51.53% of the errors are the responsibility of the State.**

# FFY 2012 Negative Error Trends

(October 2011 through June 21, 2012)

Negative Error Ranking:

Element	Invalid #	% Of total
Notices	227	59.11%
Application	24	6.25%
Verification	42	10.94%
Action Type	10	2.60%
Other	66	17.19%
Wages	10	2.60%
Residency	1	0.26%
HH Comp	2	0.52%
Combined Gross	1	0.26%
Student Status	1	0.26%
<b>TOTAL</b>	<b>384</b>	<b>100.00%</b>



## FFY 2012 Negative Error Trends

(October 2011 through June 21, 2012)

Negative Error Causes:

ERROR CAUSES	# Cases	% Cases
Notice not clearly understandable	104	25.12%
Notice did not include date of intended action	72	17.39%
Policy incorrectly applied	36	8.70%
Data entry and/or coding error (includes selection of incorrect codes)	36	8.70%
Notice reason does not match reason for action	34	8.21%
Improper Denial/Termination - failure to provide - verification was received or is in case file	18	4.35%
Computer programming error	14	3.38%
Income from known/processed source included that should not have been	9	2.17%
Late denial agency failed to process the application timely	9	2.17%
Notice was not complete	8	1.93%
Computer user error (Improper use of system or unauthorized process or work around)	7	1.69%
Failed to process the reapplication timely (recertification application)	7	1.69%
Improper denial prior to end of timeframe for providing verification	6	1.45%
Improper termination or suspension for failure to meet reporting requirements	6	1.45%
Other	6	1.45%
Improper denial within 30-day period for missing interview(s)	5	1.21%
Improper Denial/Termination - failure to provide - case should have been processed without the deduction	3	0.72%
Improper income calculation	3	0.72%
Notice was sent to wrong address	3	0.72%
Failed to consider or incorrectly considered reported information	2	0.48%
Improper Denial/Termination - failure to provide - household never notified of needed verification	2	0.48%
Improper Denial/Termination - failure to provide - household not given at least 10 days to provide	2	0.48%
Failed to send notice of action	2	0.48%
Deduction that should have been included was not	2	0.48%
Verification of income requested for a person not associated with current application	2	0.48%
Verification was in case file	1	0.24%
Eligible person(s) disqualified	1	0.24%
Eligible person(s) excluded - exempt from work requirements - physically or mentally unfit	1	0.24%
Eligible qualified alien excluded - Cuban or Haitian Entrant	1	0.24%
Entitled to separate status	1	0.24%
Failed to consider or incorrectly considered Child Support deductions	1	0.24%
Conversion to monthly amount not used or incorrectly applied	1	0.24%
Agency failed to follow up on inconsistent or incomplete information	1	0.24%
Agency failed to follow up on known and reported impending changes	1	0.24%
Improper calculation - Income averaged incorrectly	1	0.24%
Improper denial - met ABAWD exemption	1	0.24%
Improper denial or termination, not out of the project area	1	0.24%
No application or case record information to support denial/termination/suspension	1	0.24%
Individual inappropriately sanctioned	1	0.24%
Resource should have been excluded	1	0.24%
Notice did not include rights of household	1	0.24%
<b>TOTAL</b>	<b>414</b>	<b>100%</b>



## SNAP Federal Timeliness of June 21, 2012

County	TIMELY (Reg and EXP)		NOT TIMELY (Reg and EXP)		OTHER (Prior to FFY)		TIMELINESS TOTAL		% OF STATE TOTAL CASES REVIEWED	% OF STATE TIMELINESS RATE
	#	% of Sample	#	% of Sample	#	% of Sample	TOTAL CASES	TIMELINESS RATE		
Adams	15	22.39%	3	4.48%	49	73.13%	67	83.33%	11.41%	11.63%
Alamosa	0	0.00%	0	0.00%	4	100.00%	4		0.68%	0.00%
Arapahoe	11	19.30%	1	1.75%	45	78.95%	57	91.67%	9.71%	8.53%
Archuleta	2	100.00%	0	0.00%	0	0.00%	2	100.00%	0.34%	1.55%
Baca	1	100.00%	0	0.00%	0	0.00%	1	100.00%	0.17%	0.78%
Boulder	10	35.71%	0	0.00%	18	64.29%	28	100.00%	4.77%	7.75%
Broomfield	2	33.33%	0	0.00%	4	66.67%	6	100.00%	1.02%	1.55%
Chaffee	0	0.00%	0	0.00%	1	100.00%	1		0.17%	0.00%
Clear Creek	1	25.00%	0	0.00%	3	75.00%	4	100.00%	0.68%	0.78%
Conejos	0	0.00%	0	0.00%	3	100.00%	3		0.51%	0.00%
Costilla	0	0.00%	0	0.00%	2	100.00%	2		0.34%	0.00%
Crowley	1	100.00%	0	0.00%	0	0.00%	1	100.00%	0.17%	0.78%
Custer	0	0.00%	0	0.00%	1	100.00%	1		0.17%	0.00%
Delta	1	11.11%	0	0.00%	8	88.89%	9	100.00%	1.53%	0.78%
Denver	19	17.43%	6	5.50%	84	77.06%	109	76.00%	18.57%	14.73%
Douglas	2	40.00%	0	0.00%	3	60.00%	5	100.00%	0.85%	1.55%
Elbert	0	0.00%	0	0.00%	2	100.00%	2		0.34%	0.00%
El Paso	18	28.57%	0	0.00%	45	71.43%	63	100.00%	10.73%	13.95%
Fremont	0	0.00%	0	0.00%	1	100.00%	1		0.17%	0.00%
Garfield	0	0.00%	0	0.00%	6	100.00%	6		1.02%	0.00%
Grand	0	0.00%	0	0.00%	1	100.00%	1		0.17%	0.00%
Huerfano	1	100.00%	0	0.00%	0	0.00%	1	100.00%	0.17%	0.78%
Jackson	0	0.00%	0	0.00%	1	100.00%	1		0.17%	0.00%
Jefferson	8	18.60%	1	2.33%	34	79.07%	43	88.89%	7.33%	6.20%

## SNAP Federal Timeliness of June 21, 2012

County	TIMELY (Reg and EXP)		NOT TIMELY (Reg and EXP)		OTHER (Prior to FFY)		TIMELINESS TOTAL		% OF STATE TOTAL CASES REVIEWED	% OF STATE TIMELINESS RATE
	#	% of Sample	#	% of Sample	#	% of Sample	TOTAL CASES	TIMELINESS RATE	%	%
Kiowa	0	0.00%	0	0.00%	1	100.00%	1		0.17%	0.00%
La Plata	1	16.67%	0	0.00%	5	83.33%	6	100.00%	1.02%	0.78%
Larimer	6	22.22%	1	3.70%	20	74.07%	27	85.71%	4.60%	4.65%
Las Animas	1	16.67%	1	16.67%	4	66.67%	6	50.00%	1.02%	0.78%
Logan	0	0.00%	0	0.00%	1	100.00%	1		0.17%	0.00%
Mesa	5	20.00%	0	0.00%	20	80.00%	25	100.00%	4.26%	3.88%
Moffat	0	0.00%	1	50.00%	1	50.00%	2	0.00%	0.34%	0.00%
Montezuma	0	0.00%	0	0.00%	5	100.00%	5		0.85%	0.00%
Montrose	3	33.33%	0	0.00%	6	66.67%	9	100.00%	1.53%	2.33%
Morgan	1	100.00%	0	0.00%	0	0.00%	1	100.00%	0.17%	0.78%
Otero	1	50.00%	0	0.00%	1	50.00%	2	100.00%	0.34%	0.78%
Ouray	1	100.00%	0	0.00%	0	0.00%	1	100.00%	0.17%	0.78%
Park	0	0.00%	0	0.00%	2	100.00%	2		0.34%	0.00%
Pitkin	0	0.00%	0	0.00%	1	100.00%	1		0.17%	0.00%
Prowers	0	0.00%	0	0.00%	3	100.00%	3		0.51%	0.00%
Pueblo	9	22.50%	1	2.50%	30	75.00%	40	90.00%	6.81%	6.98%
Routt	0	0.00%	0	0.00%	1	100.00%	1		0.17%	0.00%
Saguache	1	33.33%	0	0.00%	2	66.67%	3	100.00%	0.51%	0.78%
San Juan	0	0.00%	0	0.00%	1	100.00%	1		0.17%	0.00%
Summit	0	0.00%	0	0.00%	2	100.00%	2		0.34%	0.00%
Teller	1	50.00%	0	0.00%	1	50.00%	2	100.00%	0.34%	0.78%
Washington	0	0.00%	0	0.00%	1	100.00%	1		0.17%	0.00%
Weld	7	26.92%	0	0.00%	19	73.08%	26	100.00%	4.43%	5.43%
Yuma	0	0.00%	0	0.00%	1	100.00%	1		0.17%	0.00%
<b>TOTAL</b>	<b>129</b>	<b>21.98%</b>	<b>15</b>	<b>2.56%</b>	<b>443</b>	<b>75.47%</b>	<b>587</b>	<b>89.58%</b>	<b>100%</b>	<b>100%</b>