

### INFORMATION FOR MOTORISTS

#### COLORADO, Gateway to the Rocky Mountain West, was admitted to the Union in 1876 and is known as the Centennial State. Colorado is the eighth largest state in area and is the highest in average elevation except Alaska.

#### THE HIGHEST ALTITUDE

is reached by Mount Elbert's 14,433 feet and the peak is one of 53 which occur to 14,000 feet or more. The Nation's highest paved auto road climbs 14,264 feet to the top of Mount Evans near Denver. Lowest elevation is 3,350 feet near Holy.

#### THE CONTINENTAL DIVIDE,

running from north to south, separates the Atlantic Ocean from the Pacific Ocean drainage.

#### SPECTACULAR SCENERY

provides backdrops for National and State Parks and their summer and winter playgrounds which afford boating, camping, fishing, hunting, or relaxation. More than a score of ski areas have won the State title of "Ski Country U.S.A."

#### SPEED LIMITS

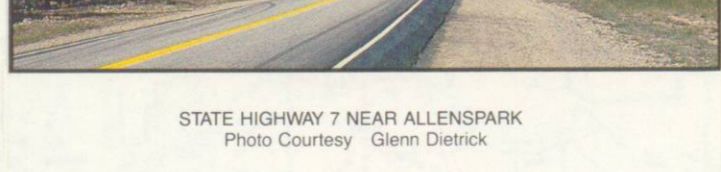
are posted for the benefit of the motorist on practically all State Highways. The lawful speeds are displayed on black and white signs. Advisory speeds for road curves or other locations where extra driving care is needed are shown on black and yellow signs. In the absence of posted speeds, the following limits established by statute are applicable: 20 miles per hour on narrow, winding mountain highways and blind curves; 25 miles per hour in a residential district; 30 miles per hour in any residential district; 40 on major, winding mountain highways and blind curves; 55 miles per hour in any other residential district. Where no special hazard exists or where a reduced speed limit is not posted, a top limit of 55 miles per hour has been set by state law to conform to the national maximum speed limit. The 55-mile-per-hour limit includes interstate highways.

#### ACCIDENTS

usually incorporated cities and towns are to be reported immediately to the Colorado State Patrol or to the office of the County Sheriff having jurisdiction. Within an incorporated city or town the local police are to be notified at once. Colorado is one of the few states in which drivers are required by law to exchange information with respect to any person injured.

#### SCHOOL BUSES

are equipped to display flashing warning and regulatory lights. Flashing yellow lights are displayed as a school bus approaches a loading point for receiving or discharging school children. Once the school bus has stopped, flashing red lights are displayed.



STATE HIGHWAY 7 NEAR ALLENSPARK  
Photo Courtesy: Glenn Dietrich

#### LEADVILLE HISTORIC DISTRICT

— "Cloud City" on the Castle of Lead. Camp called Leadville, the highest incorporated city in the United States. At one time surpassed all Colorado communities, except Denver, in population. F-10

#### MORRISON HISTORIC DISTRICT

— The townsite later was purchased by George Morrison in the 1850's. The Morrison area was a popular picnic area for Sunday excursion trains of the Denver and Pacific Railroad in the late 1800's. The North Fork Colorado District was a popular resort and picnic area. The district had a thriving timber business in the early years, as almost 30 car loads of lumber per day were shipped from Buffalo. As late as 1880, the good timber within 15 miles of Buffalo had been harvested. G-15

#### SILVERTON HISTORIC DISTRICT

— The gem of the Rockies, famous for the "Silverton" Railroad, a monument to man's engineering skill, audacity, and pioneering spirit. Silverton at one time had the distinction of being the town in the United States served by four narrow gauge railroads. M-6

#### TELLURIDE HISTORIC DISTRICT

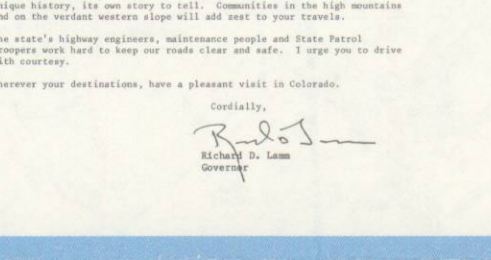
— Located in the majestic San Juan Mountains of southwestern Colorado. Telluride got its start from the mining activities in the area. From the nearby Aspen Power Plant the community was supplied with electricity from the first large, distance-high voltage alternating current line in the world. M-6



STATE OF COLORADO



STATE SEAL  
STATE FLAG



STATE ANIMAL



STATE TREE



STATE TREE



STATE FLOWER



STATE ANIMAL



STATE ANIMAL



STATE ANIMAL



STATE ANIMAL

#### STATE COLLEGES AND UNIVERSITIES

Adams State College — Alamogordo  
Colorado School of Mines — Golden  
Colorado State University — Fort Collins  
Fort Lewis College — Durango  
Mesa State College — Grand Junction  
Metropolitan State College — Denver  
University of Southern Colorado — Pueblo  
University of Northern Colorado — Greeley  
Western State College — Gunnison

#### MILITARY ACADEMY

United States Air Force Academy — North of Colorado Springs

#### STATE SYSTEM COMMUNITY COLLEGES

Aims Community College — Greeley  
Arapahoe Community College — Littleton  
Colorado Mountain College — Greenwood Springs  
Colorado Northwestern Community College — Rangely  
Community College of Denver — Denver: Three Campuses  
Lamar Community College — Lamar  
Morgan Community College — Fort Morgan  
Northern State Junior College — Sterling  
Otero Junior College — La Junta  
Pikes Peak Community College — Colorado Springs  
Pueblo Vocational Community College — Pueblo  
Trinidad State Junior College — Trinidad

#### PRIVATE COLLEGES AND UNIVERSITIES

Blair Business College — Colorado Springs  
Colorado College — Colorado Springs  
Colorado Institute of Art — Colorado Springs  
Colorado Technical College — Colorado Springs  
Colorado Women's College — Denver  
Conservative Baptist Theological Seminary — Denver  
Denver Institute of Technology — Denver  
Illiff School of Theology — Denver  
Loretto Heights College — Denver  
Mesa State College — Denver  
Regis College — Denver  
Rockmont College — Lakewood  
St. Thomas Seminary — Lakewood  
University of Denver — Denver  
Western Bible College — Morrison

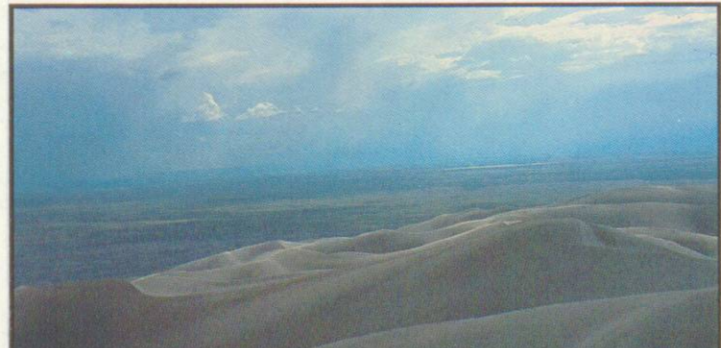
#### MINERAL HOT SPRINGS

Mineral Hot Springs are located in or near the following towns: Alamosa, Aspen, Buena Vista, Craig, Crested Butte, Delta, Durango, Edwards, Florissant, Fairplay, Glenwood Springs, Hartsel, Hot Sulphur Springs, Idaho Springs, Mineral Hot Springs, Ouray, Pagosa Springs, Paria, Poncha Springs, Powderhorn, Pueblo, Redstone, Rico, Salida, Steamboat Springs.

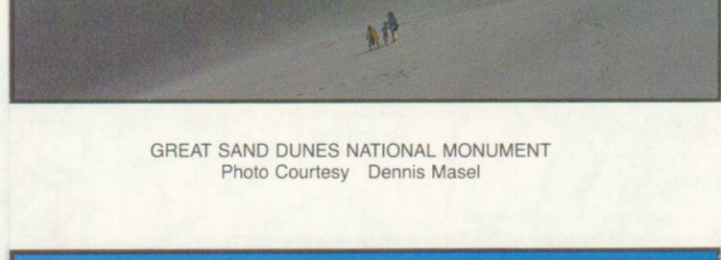
#### MAJOR MUSIUMS AND ZOOS

Local Inquiry as to Facilities, Activities, Type, Hours and Admission Prices

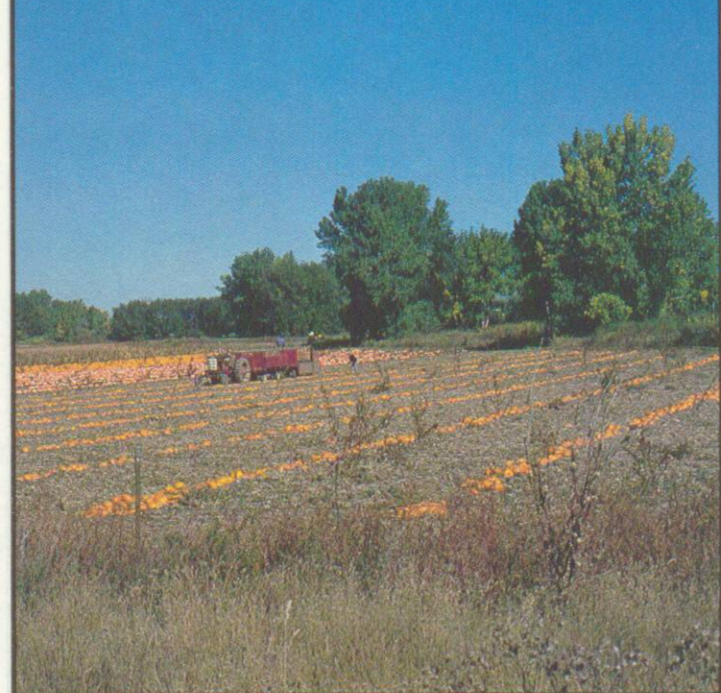
ALAMOSA — Adams State College Museum, Great Sand Dunes National Monument, Park Museum  
ASPEN — Aspen Historical Society Museum  
BOULDER — Pioneer Museum, University of Colorado Museum  
CANON CITY — Canon City Municipal Museum  
CENTRAL CITY — Gilpin County Historical Society Museum  
CENTRAL CITY — Gilpin County Historical Society Museum  
CLARK — Hartsel Peak School House  
COLORADO SPRINGS — Carnegie House Museum, Cheyenne Mountain Zoological Park, Colorado Springs Fine Arts Center, May Natural History Museum, McAllister House Museum, Museum of the American Numismatic Association, Pioneer's Museum, Western Museum of Mining & Industry  
CORTÉZ — Cortez Museum  
CRAIG — Moffat County Museum  
CRIPPLE CREEK — Cripple Creek District Museum  
DELTA — Delta County Historical Society  
DENVER — Children's Museum of Denver, Denver Botanic Garden, Denver Museum of Natural History, Denver Zoological Gardens, Formy Transportation Museum, The Holly Brown House, Valerian Car Museum  
DILLON — The Summit Historical Society  
DINOSAUR — Dinosaur Quarry Visitor Center  
DURANGO — Four Corners Museum Association  
ESTES PARK — Estes Park Historical Museum, Rocky Mountain National Park  
FAIRPLAY — Hivan Homestead Museum  
FLORENCE — Florence Pioneer Museum  
FLORISSANT — Florissant Fossil Beds National Monument  
FORT CARSON — Fort Carson Museum of the Army in the West  
FORT COLLINS — Fort Collins Pioneer Museum  
FORT GARLAND — Fort Garland Museum  
FORT MORGAN — Fort Morgan Heritage Foundation  
GEORGETOWN — Hamill House, Bowman-White House, Hotel De Paris  
GOLDEN — Buffalo Bill Memorial Museum, Colorado Railroad Museum, School of Mines Geology Museum  
GRAND JUNCTION — Museum of Western Colorado  
GREELEY — Centennial Village, Greeley Municipal Museum, Meeker  
GUNNISON — Gunnison County Museum  
HUNTER — Lincoln County Museum  
IDHO SPRINGS — Clear Creek Historic Mining and Milling Museum  
JULIESBURG — Fort Sedgewick Depot Museum  
KIT CARSON — Kit Carson Historical Society  
LA JÚNTA — Bents Old Fort, National Historic Site, Koshare Society  
LAMAR — Big Timbers Museum  
LAS ANIMAS — Kit  
LA VETA — Fort Francisco Museum  
LEADVILLE — Healy House-Dexter Cabin, House with the Eye Museum, Old Church, Heritage Museum, Leadville Assembly, Matchless Mine, Tabor Opera House Museum  
LITTLETON — Arapahoe Community College Museum of Art, Thomas Seminary Museum  
LONGMONT — Longmont Pioneer Museum  
LOVELAND — Loveland Museum  
MANTOU SPRINGS — Cameron's Doll and Carriage Museum, Mesa Verde National Park  
MEEKER — The White House Museum  
MESA VERDE NATIONAL PARK — Mesa Verde National Park Museum  
MONTROSE — Utah Indian Museum  
MONTECALMO — National Historical Society  
PALMER LAKE — Palmer Lake Historical Society  
PLATTEVILLE — Fort Vasquez Visitor Center  
PUEBLO — El Pueblo Museum, Pueblo Metropolitan Museum, Springside Fine Arts and Conference Center  
RIFLE — Frontier Museum  
ROCKY FORD — Rocky Ford Public Museum  
SAGUACHE — Saguache County Museum  
SALIDA — Salidas Museum  
SANFORD — Pike's Stockade  
SILVER CLIFF — Silver Cliff Museum  
SILVER PLUME — Miners Ridge Museum  
SILVERTON — San Juan County Historical Society Museum  
STEAMBOAT SPRINGS — Tread of Pioneer  
STERLING — Overland Trail Museum  
TELLURIDE — San Miguel Historical Society  
TRINIDAD — Baca House, Bloom House, Trinidad State Junior College Museum  
WRAY — Wray Museum



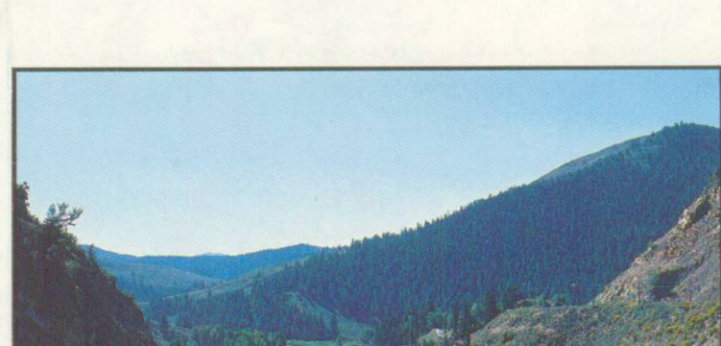
STATE PATROL HIGHWAY TRUCK RAMP  
Photo Courtesy: Glenn Dietrich



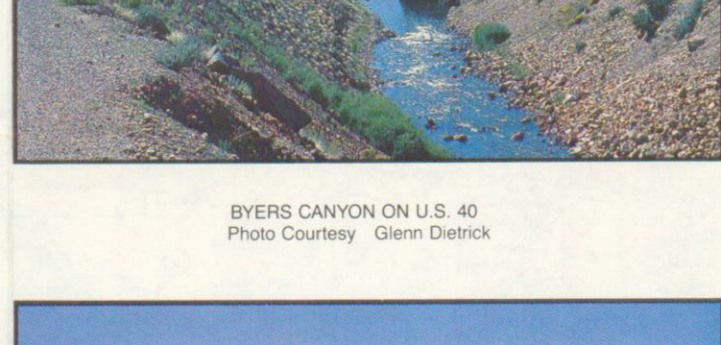
GREAT SAND DUNES NATIONAL MONUMENT  
Photo Courtesy: Dennis Malt



NEAR LONGMONT  
Photo Courtesy: Glenn Dietrich



BYERS CANYON ON U.S. HIGHWAY 24  
Photo Courtesy: Glenn Dietrich



STATE PATROL HIGHWAY TRUCK RAMP  
Photo Courtesy: Glenn Dietrich



STATE PATROL HIGHWAY TRUCK RAMP  
Photo Courtesy: Glenn Dietrich

#### Colorado

### ABOVE ALL

#### MILEAGE TABLE

Cover Photo: MOUNT EVANS HIGHWAY, STATE HIGHWAY 103  
Photo Courtesy: Ronald Ruloff

Illustrated by: The Dringman Press, Inc., Denver, Colorado

Litering is unLAWFUL

### POINTS OF INTEREST

- #### SELECTED HISTORIC DISTRICTS
- CENTRAL CITY HISTORIC DISTRICT — The oldest square mile on earth. Colorado's first town following discovery of gold in 1859 by John Gregory. Mines from all over the world brought a love of culture and beauty, which is still evident in the Victorian facades of the buildings and the Central City festival during the summer months. F-15
  - CRIPPLE CREEK HISTORIC DISTRICT — Colorado's greatest gold camp — the "Bowl of Gold," rests behind an ancient volcanic, Mt. Plagan. The hills above the town are covered with the remains of mines, headframes, shaft houses, hoists and tailings piles, which offer to the southwest one may enjoy a spectacular vista of the Sangre De Cristo Range. J-16
  - GEORGETOWN-SILVER PLUME HISTORIC DISTRICT — The oldest silver mining region in the State of Colorado. The silver queen of the Rockies hosts some of the finest examples of Victorian architecture in the United States. Georgetown is one of the few towns originally built of wood that did not suffer a major fire. The way to the efforts of the fire brigades known across the United States for their efficiency, organization and trophies won in competition. F-14
  - INTER-LAKEN HISTORIC DISTRICT — Visitors to the Inter-laken resort came via railroad and transferred to stagecoach. For a "roughing it" experience, The resort had electric, telephone service and its own water system. The resort consisted of a hotel, riding stables, billiard hall, dance hall, pool, lake dock and assorted small buildings. F-11
  - LAKE CITY HISTORIC DISTRICT — Settled in 1875, this community is the best distributing point for the mining industry in the San Juans. The oldest Presbyterian church on the western slope is situated in Lake City. In 1853 Lake City was the site of the trial of Alford Parker, the only person to stand trial for cannibalism. L-8
  - LEADVILLE HISTORIC DISTRICT — "Cloud City" on the Castle of Lead. Camp called Leadville, the highest incorporated city in the United States. At one time surpassed all Colorado communities, except Denver, in population. F-10
  - MORRISON HISTORIC DISTRICT — The townsite later was purchased by George Morrison in the 1850's. The Morrison area was a popular picnic area for Sunday excursion trains of the Denver and Pacific Railroad in the late 1800's. The North Fork Colorado District was a popular resort and picnic area. The district had a thriving timber business in the early years, as almost 30 car loads of lumber per day were shipped from Buffalo. As late as 1880, the good timber within 15 miles of Buffalo had been harvested. G-15
  - SILVERTON HISTORIC DISTRICT — The gem of the Rockies, famous for the "Silverton" Railroad, a monument to man's engineering skill, audacity, and pioneering spirit. Silverton at one time had the distinction of being the town in the United States served by four narrow gauge railroads. M-6
  - TELLURIDE HISTORIC DISTRICT — Located in the majestic San Juan Mountains of southwestern Colorado. Telluride got its start from the mining activities in the area. From the nearby Aspen Power Plant the community was supplied with electricity from the first large, distance-high voltage alternating current line in the world. M-6
- #### SKI AND WINTER SPORTS AREAS
- ARAPAHO BASIN — Ski area (local inquiry) F-9
  - ARAPAHO BASIN — Ski area (local inquiry) F-9
  - ASHcroft — Winter sports area H-13
  - ASPEN, BUTTERMILK, HIGHLANDS AND MOUNTAIN — Ski and winter sports area H-9
  - BEAVER CREEK — Ski and winter sports area F-10
  - BERTHOUD PASS — Ski and winter sports area F-13
  - BRECKENRIDGE — Ski and winter sports area G-5
  - CHAMPAIN HILL — Ski and winter sports area O-5
  - COPPER MOUNTAIN — Ski and winter sports area L-15
  - CRAVON HILL — Ski and winter sports area K-9
  - CREEDE — Ski and winter sports area M-9
  - CRESTED BUTTE — Ski and winter sports area I-9
  - DEVILS THUMB RANGE — Winter sports area E-14
  - ELDORA — Ski and winter sports area E-13
  - FRASER VALLEY — Winter sports area (local inquiry) E-13
  - GENIEVA BASIN — Ski and winter sports area C-10
  - HESPERUS — Ski area (weekends) P-9
  - HIDDEN VALLEY — Ski and winter sports area C-4
  - HOWELSON HILL — Ski and winter sports area C-9
  - KENDALL MOUNTAIN — Ski area (local inquiry) M-8
  - KEYSTONE — Ski and winter sports area F-13
  - LAKE CITY — Ski area (local inquiry) M-6
  - LOVELAND MOUNTAIN — Ski and winter sports area G-5
  - MONARCH — Ski and winter sports area O-11
  - PANADERO — Ski and winter sports area K-16
  - PKES PEAK — Ski and winter sports area (weekends) L-16
  - POWDERHORN — Ski and winter sports area P-14
  - PURDIFICATION — Ski and winter sports area M-9
  - RATON-SUGERTIE — Ski area (local inquiry) H-9
  - SHANAGOOT — Winter sports area (local inquiry) L-16
  - SKI BROADMORNE — Ski and winter sports area G-2
  - SKI COOPER — Ski and winter sports area O-11
  - SKI DEWILD — Ski and winter sports area H-14
  - SKI SAN ISABEL — Ski and winter sports area L-16
  - SNOWMASS — Ski and winter sports area E-18
  - ST. MARY'S GLACIER SKI RESORT — Ski and winter sports area N-3
  - STEAMBOAT — Ski and winter sports area (weekends) E-14
  - STEAMBOAT — Ski and winter sports area (weekends) E-14
  - STONER — Ski and winter sports area (weekends) E-14
  - TAHOR — Ski and winter sports area O-11
  - TELLURIDE — Ski and winter sports area M-5
  - TRINIDAD — Ski and winter sports area O-11
  - WINTER PARK — Ski and winter sports area O-10
  - WOLF CREEK — Ski and winter sports area O-13
- #### OTHER POINTS OF INTEREST
- CHRIST OF THE ROCKIES — 52 ft. porcellan statue G-12
  - CUMBERBOLD TOLLIC — Scenic railroad, Engine 463 P-14
  - FOUR CORNERS — Only point in U.S. common to four states P-1
  - GARDEN OF THE GODS — Red sandstone formations E-14
  - MOFFAT TUNNEL — Railroad tunnel under the Continental Divide E-14
  - MOTHER CARROLL — "To Saint Francis Xavier's Chapel" F-13
  - MOUNT EVANS HIGHWAY — Highest in the U.S., 14,264 ft. F-14
  - LUDLOW MONUMENT — Site of abortive revolt O-11
  - LAMAR — Big Timbers Museum LAS ANIMAS — Kit
  - LA VETA — Fort Francisco Museum
  - LEADVILLE — Healy House-Dexter Cabin, House with the Eye Museum, Old Church, Heritage Museum, Leadville Assembly, Matchless Mine, Tabor Opera House Museum
  - LITTLETON — Arapahoe Community College Museum of Art, Thomas Seminary Museum
  - LONGMONT — Longmont Pioneer Museum
  - LOVELAND — Loveland Museum
  - MANTOU SPRINGS — Cameron's Doll and Carriage Museum, Mesa Verde National Park
  - MEEKER — The White House Museum
  - MESA VERDE NATIONAL PARK — Mesa Verde National Park Museum
  - MONTROSE — Utah Indian Museum
  - MONTECALMO — National Historical Society
  - PALMER LAKE — Palmer Lake Historical Society
  - PLATTEVILLE — Fort Vasquez Visitor Center
  - PUEBLO — El Pueblo Museum, Pueblo Metropolitan Museum, Springside Fine Arts and Conference Center
  - RIFLE — Frontier Museum
  - ROCKY FORD — Rocky Ford Public Museum
  - SAGUACHE — Saguache County Museum
  - SALIDA — Salidas Museum
  - SANFORD — Pike's Stockade
  - SILVER CLIFF — Silver Cliff Museum
  - SILVER PLUME — Miners Ridge Museum
  - SILVERTON — San Juan County Historical Society Museum
  - STEAMBOAT SPRINGS — Tread of Pioneer
  - STERLING — Overland Trail Museum
  - TELLURIDE — San Miguel Historical Society
  - TRINIDAD — Baca House, Bloom House, Trinidad State Junior College Museum
  - WRAY — Wray Museum

### COLORADO STATE PATROL HEADQUARTERS

Road Conditions Information: 639-1234  
Denver & West: 757-9422  
State Headquarters (Denver): 445-4686  
Emergencies: 445-4686  
District No. 1 (Aurora): 344-2536  
Blairfield: 499-1966  
Boulder: 441-2536  
Castle Rock: 688-1115  
Colorado Springs: 534-1115  
Fountain: 374-3439  
District No. 2 (Pueblo): 544-2424  
Monte Vista: 638-3526  
La Junta: 384-2562  
Chaparral: 355-5071  
Trinidad: 846-2227  
District No. 3 (Greeley): 353-1151  
Sterling: 644-4020  
Silt: 522-4993  
District No. 4 (Grand Junction): 524-2641  
Eagle: 328-6343  
Steamboat Springs: 338-3343  
District No. 5 (Durango): 247-4722  
Durango: 279-7923  
Fruita: 688-3133  
Hot Sulphur Springs: 567-3393  
\*Open 24 hours every day

### RUNWAY TRUCK RAMPS

Nine runway truck ramps have been constructed on mountain passes where long stretches of downhill slopes contribute toward heavy brake use by truck operators. In one of these ramps a runway truck is pushed uphill. The exception is the ramp on I-70 eastbound in Mount Vernon Canyon approaching Denver. This ramp actually runs downhill. It is fitted with gravel to a depth of two feet.

While these ramps appear different, all are designed to stop a tractor-trailer rig with a gross weight of 80,000 pounds traveling at 100 MPH. A runway truck is pushed uphill. The exception is the ramp on I-70 eastbound in Mount Vernon Canyon approaching Denver. This ramp actually runs downhill. It is fitted with gravel to a depth of two feet.

#### RUNWAY RAMP LOCATION

Runway Ramp	Location	Weight Limit
1-70	Vail Pass-Man Gore Creek, Westbound	162,226
1-70	Vail Pass-Man Gore Creek, Westbound	162,226
1-70	Straight Creek Pass-Lasky Gulch, Westbound	209,000
1-70	Straight Creek Pass-Lasky Gulch, Westbound	209,000
1-70	Mount Vernon Canyon, Eastbound	256,500
U.S.-40	Robit Pass, Westbound	142,211
U.S.-40	Steck Rock, Northbound	142,211
U.S.-160	Hot Creek Pass, Westbound	160,800
U.S.-160	Hot Creek Pass, Westbound	160,800

### SELECTED DENVER SITES

71 CITY PARK — East 22nd Avenue and Mint, Colfax Avenue  
CIVIC CENTER — State Capitol and United States Mint, Colfax Avenue and Broadway  
CURTIS CHAMPA — Street district, bounded by Arapahoe, 30th, Broadway and 4th and 5th Streets  
DANIELS AND FISHER TOWER — 1101 Sixteenth Street  
DENVER CENTER FOR PERFORMING ARTS — 14th and Champa Street (continued next column)

Type*	Name of Area	Map Key	Fee	San. Dump	Sun. Fac.	(Toilets)	Camping	Picnicking	Hiking	Swimming	Boating
1	DW Arapahoe	H-13		X	X		X	X	X		
2	NRA Arapahoe (USFS)	D-13	X	X	X		X	X	X	X	
3	SRA Barbours Ponds	D-17	X	X	X		X	X	X	X	
4	SP Bar Lake	C-18	X	X	X		X	X	X	X	
4	NHS Bents Old Fort	L-23	X	X	X		X	X	X	X	
6	NM Black Canyon of the Gunnison	J-6	X	X	X		X	X	X	X	
7	SRA Bonny	F-28	X	X	X		X	X	X	X	
8	SRA Bowd	C-17	X	X	X		X	X	X	X	
9	SRA Castleton Canyon	G-18	X	X	X		X	X	X	X	
10	SRA Chaffee	F-16	X	X	X		X	X	X	X	
11	SRA Cherry Creek	F-17	X	X	X		X	X	X	X	
12	NM Colorado	H-2	X	X	X		X	X	X	X	
13	SRA Crawford	J-6	X	X	X		X	X	X	X	
14	NRA Curcumi	K-8	X	X	X		X	X	X	X	
15	NM Crocker	B-1	X	X	X		X	X	X	X	
16	SP Eldorado Canyon	E-15	X	X	X		X	X	X	X	
17	SRA Elevator-Mile	H-15	X	X	X		X	X	X	X	
18	SP Flodge	G-25	X	X	X		X	X	X	X	
19	NM Fossil Beds	H-16	X	X	X		X	X	X	X	
20	SP Great Gate Canyon*	F-15	X	X	X		X	X	X	X	
21	NM Great Sand Dunes	N-14	X	X	X		X	X	X	X	
22	SRA Highlands	H-11	X	X	X		X	X	X	X	
23	NM Horseshoe	O-1	X	X	X		X	X	X	X	
24	SRA Island Acres	H-3	X	X	X		X	X	X	X	
25	SRA Jackson	C-20	X	X	X		X	X	X	X	
26	RA Lake Hasty (Corps of Engineers)	L-25	X	X	X		X	X	X	X	
27	SP Lory (Martin Lake)	N-17	X	X	X		X	X	X	X	
28	SP Lory	B-16	X	X	X		X	X	X	X	
29	NP Mesa Verde	G-9	X	X	X		X	X	X	X	
30	DW Miramonte	M-3	X	X	X		X	X	X	X	
31	SRA Navajo*	P-1	X	X	X		X	X	X	X	
32	SP Placita	I-7	X	X	X		X	X	X	X	
33	SRA Pueblo*	K-17	X	X	X		X	X	X	X	
34	DW Ramah	H-20	X	X	X		X	X	X	X	
35	SRA Rifle Gap Falls*	F-6	X	X	X		X	X	X	X	
36	SP Roxborough	C-14	X	X	X		X	X	X	X	
37	SP State Forest*	B-12	X	X	X		X	X	X	X	
38	SP Steamboat Lake (Pear Lake)	J-5	X	X	X		X	X	X	X	
40	SRA Switzer Lake	B-1	X	X	X		X	X	X	X	
41	DW Tarryall	H-14	X	X	X		X	X	X	X	
42	SRA Trinidad*	P-18	X	X	X		X	X	X	X	
43	SRA Trinidad	L-4	X	X	X		X	X	X	X	
44	NWR Arapahoe	B-12	X	X	X		X	X	X	X	
45	NWR Browns Park	O-12	X	X	X		X	X	X	X	
46	NWR Montic Vela	O-13	X	X	X		X	X	X	X	
	NW Adams Park		X	X	X		X	X	X	X	

\*TYPE: NMS — National Monument; NP — National Park; NRA — National Recreation Area; NWR — National Wildlife Refuge.

FEES: Visitors to designated recreation sites may be charged entrance fees as well as recreation use or user fees. If an unimproved Park, the Golden Eagle Pass is acceptable in lieu of entrance fees on days of Federal Aides and the Parks Pass is acceptable at all State Parks. Special Permits are available for Senior Citizens.

NOTES:  
1. Non-motorized boating only.  
2. Rock Climbing.  
3. Interpretative Tours (includes self-guided tours).

Campana Reservations: 1-800-328-6338  
3 (Reservations Fee Required - Less Than 15 Days in Advance)

### COLORADO MOUNTAIN PEAKS

14,000 feet high or more

Mt. Elbert	H-11	14,433	Mt. Belford	I-11	14,197	Humboldt Peak	M-14	14,064
Mt. Massive	H-11	14,421	Mt. Yale	I-11	14,196	McIntosh Bastard	G-14	14,060
Mt. Harvard	H-11	14,208	Crawford Peak	M-16	14,191	Spring Peak	N-4	14,059
Blanca Peak	N-15	14,345	Mt. Boss	G-12	14,172	Handies Peak	M-6	14,048
La Plata Peak	H-11	14,336	Kil Carson Peak	P-15	14,165	Culbert Peak	P-16	14,047
Gregory Peak	F-13	14,270	Mt. Oxford	I-11	14,153	Red Cloud Peak	N-10	14,042
Crestone Peak	M-14	14,294						