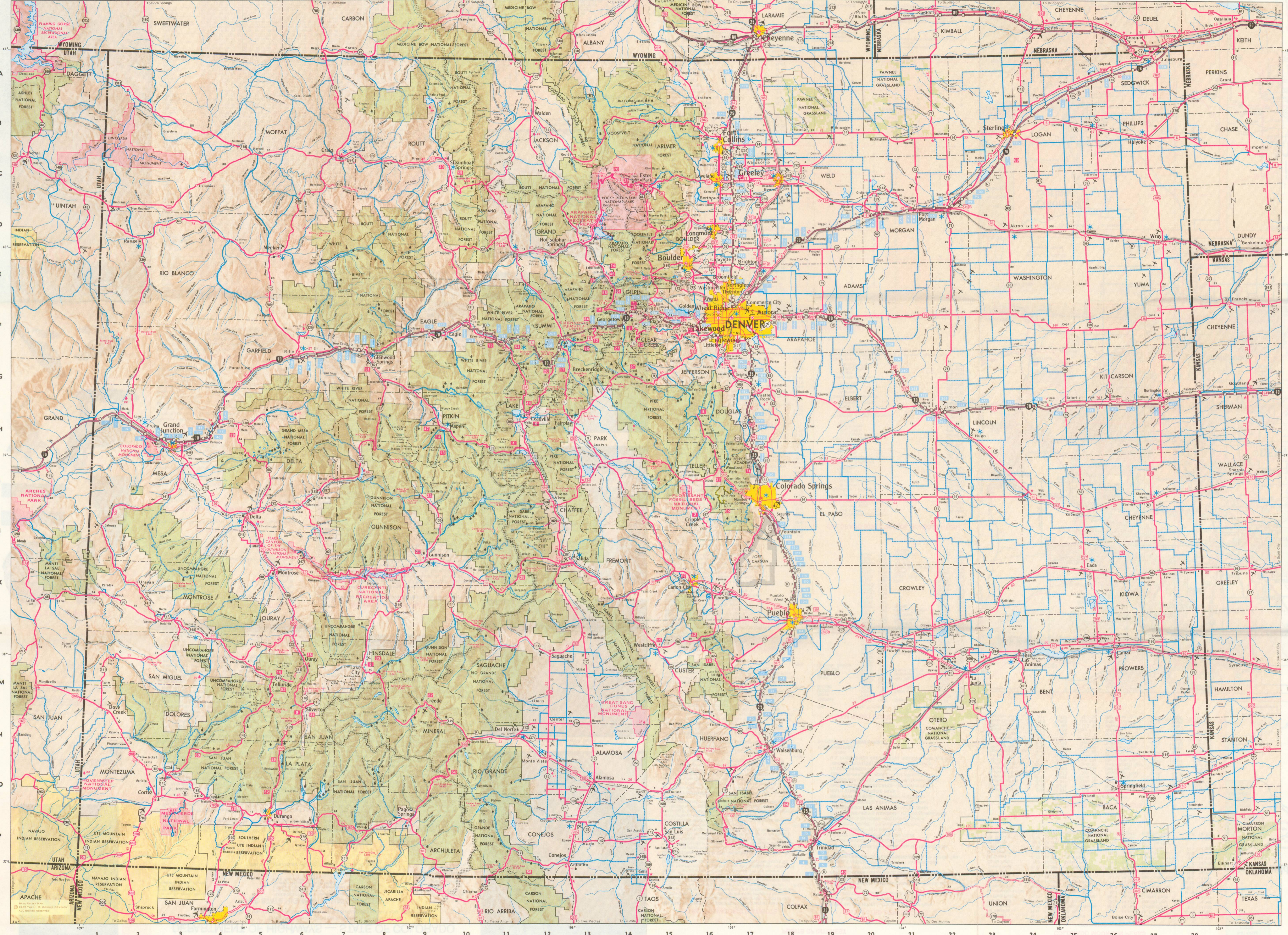


COLORADO INDEX

Population shown for Incorporated Places
Elevations are shown in red
Colorado's Population 2,778,176 - Denver's Population 514,678
Population Information from 1970 Census
COUNTY SEAT IN CAPITAL LETTERS



LEGEND

PRINCIPAL THROUGH HIGHWAYS

- MULTILANE DIVIDED, ACCESS FULL-CONTROLLED
- MULTILANE DIVIDED
- MULTILANE UNDIVIDED
- 2 LANE, PAVED
- SURFACE TREATED
- GRAVEL (Local inquiry should be made UNIMPROVED concerning road conditions)

CONNECTING COUNTY ROADS

- MULTILANE DIVIDED
- MULTILANE UNDIVIDED
- 2 LANE, PAVED
- SURFACE TREATED
- GRAVEL (Local inquiry should be made UNIMPROVED concerning the conditions)
- TOLL ROAD 2 LANE

ACCESS POINTS

- FULL INTERCHANGE
- PARTIAL INTERCHANGE
- ACCESS DIVIDED

INTERCHANGE NUMBER

- INTERSTATE AND STATE
- UNITED STATES AND STATE

INTERESTS AND STATE

- CHAMBERLAIN
- EMERGENCY SERVICE BY COLORADO
- POINTS OF INTEREST
- MOUNTAIN PASSES
- CONTINENTAL DIVIDE
- FOREST RANGER HEADQUARTERS
- REST AREAS
- Roadside Parks
- Campgrounds
- Passenger Train Routes

MILEAGE

- MILEAGE BETWEEN
- ACCUMULATED MILEAGE BETWEEN STARS
- U. S. BUSINESS ROUTES
- MEXICO-CANADA ROUTE (Through Colorado)
- NATIONAL PARKS OR MONUMENT
- INDIAN RESERVATIONS
- GOVERNMENT RESERVATIONS
- MILITARY AIRPORTS
- OTHER AIRPORTS
- OUTDOOR

POPULATION OF CITIES AND MINOR NAMED PLACES

- 50,000 AND OVER
- 25,000 - 50,000
- 10,000 - 25,000
- 5,000 - 10,000
- 1,000 - 5,000
- 0 - 1,000

STATE CAPITAL

POPULATION OF CITIES AND MINOR NAMED PLACES

MILES

KILOMETRES