

Governor John A. Love, Chief Executive

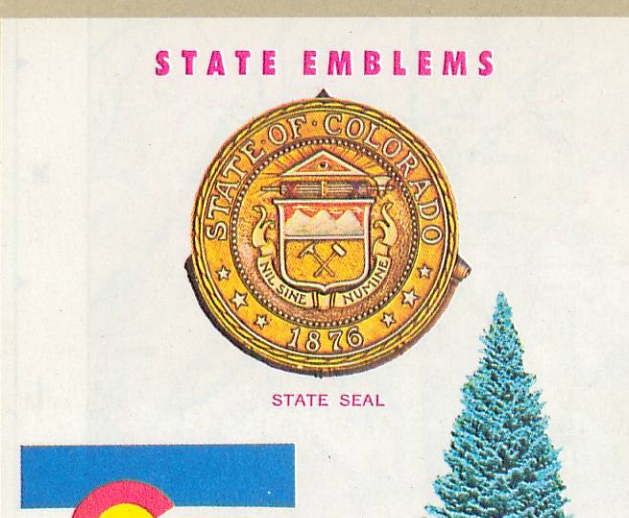
INFORMER OF RESIDENTS PEOPLE HAVE... DEAR MOTORIST... THE STATE DEPARTMENT OF HIGHWAYS...

STATE DEPARTMENT OF HIGHWAYS DIVISION OF HIGHWAYS - STATE OF COLORADO

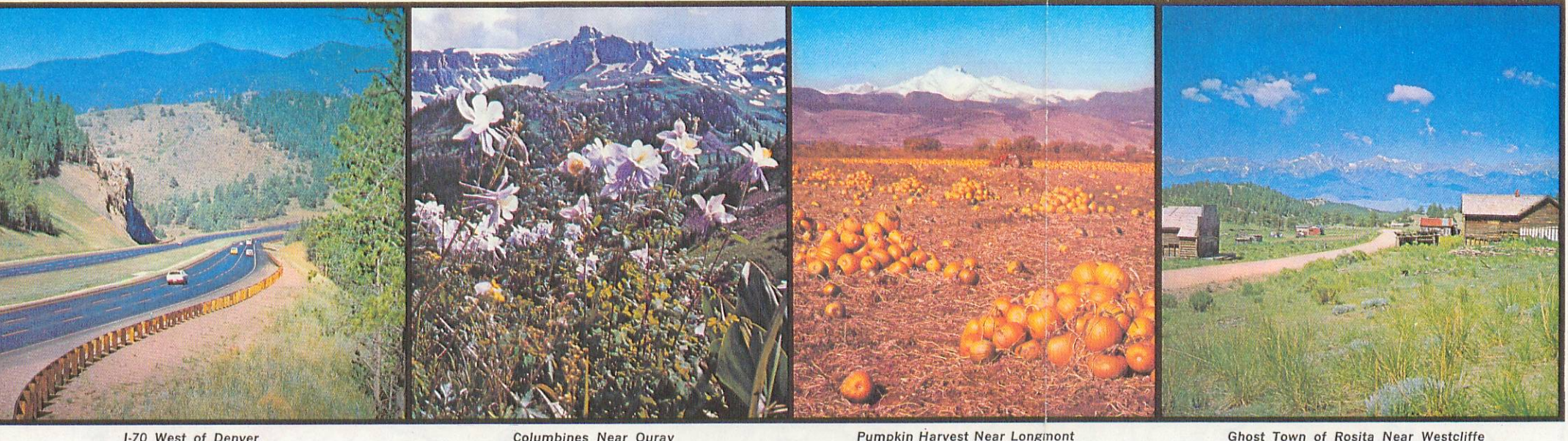
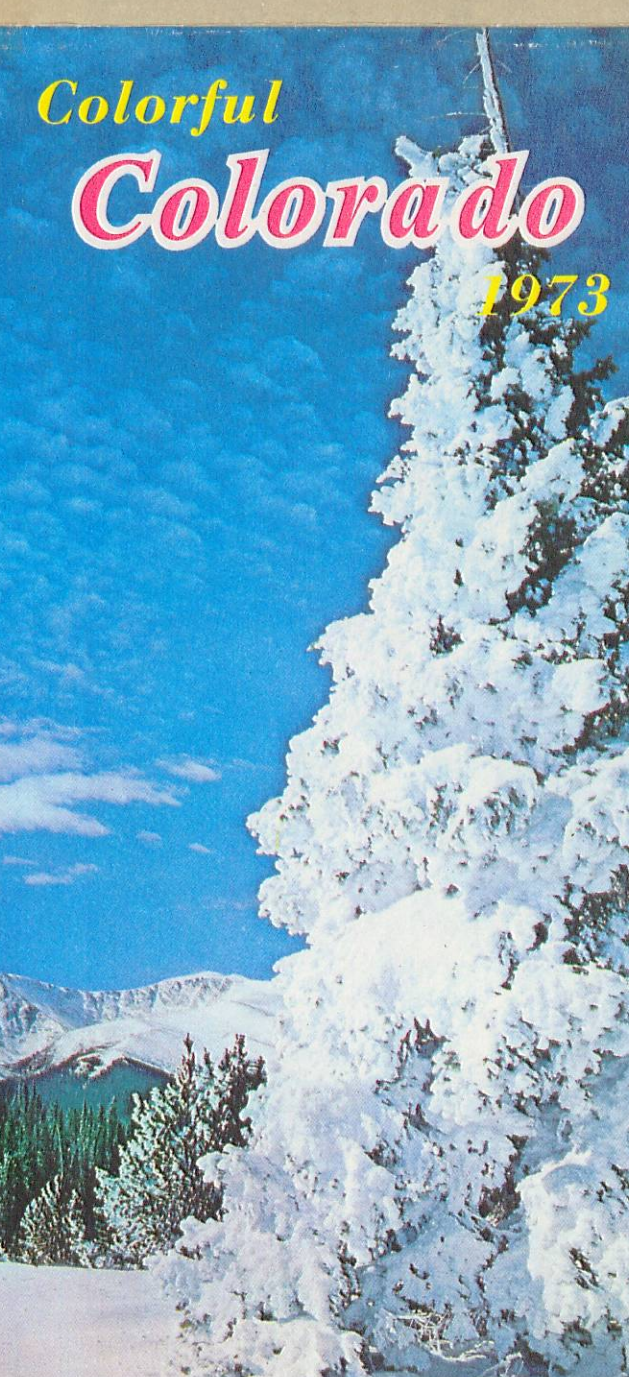
GOVERNOR JOHN A. LOVE, Chief Executive

STATE HIGHWAY COMMISSIONERS... L. Dodson, Glenwood Springs, Chairman... J. S. Salda, Denver...

STATE EMBLEMS... STATE SEAL



Colorful Colorado 1973



170 West of Denver, 14000 ft., near Ouray, Pumpkin Harvest Near Longmont, Ghost Town of Rosita Near Westcliffe

INFORMATION FOR MOTORISTS... COLORADO, Gateway to the Rocky Mountain West, was admitted to the Union in 1876...

SCHOOL BUSES are equipped to display flashing red lights when stopping to receive or discharge school children... THE CONTINENTAL DIVIDE, running from north to south, separating the Atlantic Ocean from the Pacific Ocean drainage...

ACCIDENTS outside incorporated cities and towns are to be reported immediately to the Colorado State Patrol or to the office of the County Sheriff having jurisdiction...

PRIVATE COLLEGES AND UNIVERSITIES... Colorado Alpine College... Colorado College... Colorado State University... Denver University...

MILITARY ACADEMY... United States Air Force Academy... JUNIOR COLLEGES... Greeley Community College... Littleton Community College...

MINERAL HOT SPRINGS... Mineral Hot Springs are located in or near the following towns: Canon City, Del Norte, Durango, Elkhart, and Manitou.

NATIONAL PARKS AND MONUMENTS... BLACK CANYON OF THE GUNNISON NATIONAL MONUMENT... COLORADO NATIONAL MONUMENT... DINO SAUR NATIONAL MONUMENT...

MILEAGE TABLE... Table listing distances between major Colorado cities such as ANCHORAGE, DENVER, COLORADO SPRINGS, and PUEBLO.

Detailed table of distances between various Colorado cities and towns. Columns include city names and corresponding mileage values.

POINTS OF INTEREST

- STATE PARKS AND RECREATIONAL AREAS... BOYD LAKE - State Recreation Area... BOYD LAKE - State Recreation Area... CRAWFORD RESERVOIR - State Recreation Area...

NATIONAL HISTORIC LANDMARKS

- BENT'S OLD FORT - National Historic Landmark... CHIMNEY ROCK - Archeological Site... COMMACHE CROSSING - Historic Road Site...

STATE FISHING OR HATCHERY AREA

- ARAPAHO BASIN - Ski and Winter Sports Area... ARAPAHO EAST - Ski and Winter Sports Area... ASPECT BUTTE - Ski and Winter Sports Area...

OTHER POINTS OF INTEREST

- BEECHER ISLAND - Site of Indian Battle... BUFFALO BILL'S GRAVE AND PHAKSA TEEPEE MUSEUM... CHRIST OF THE ROCKIES - St. P. Pelre's Statue...

FOUR CORNERS

Only in U.S. common to Four State Corners... GRANT LAKE - World's Highest Yacht Anchorage...

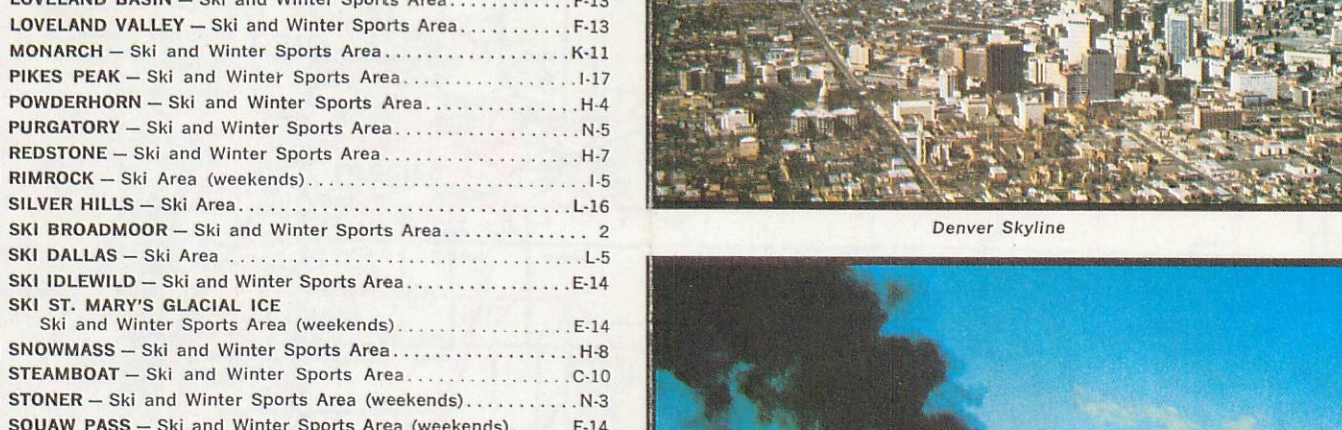


Table of distances between Denver and other major Colorado cities like Colorado Springs, Pueblo, and Fort Collins.

COLORADO MOUNTAIN PEAKS

Table listing major mountain peaks in Colorado, including their names and elevations in feet.

COLORADO MOUNTAIN PASSES

Table listing major mountain passes in Colorado and their elevations.

