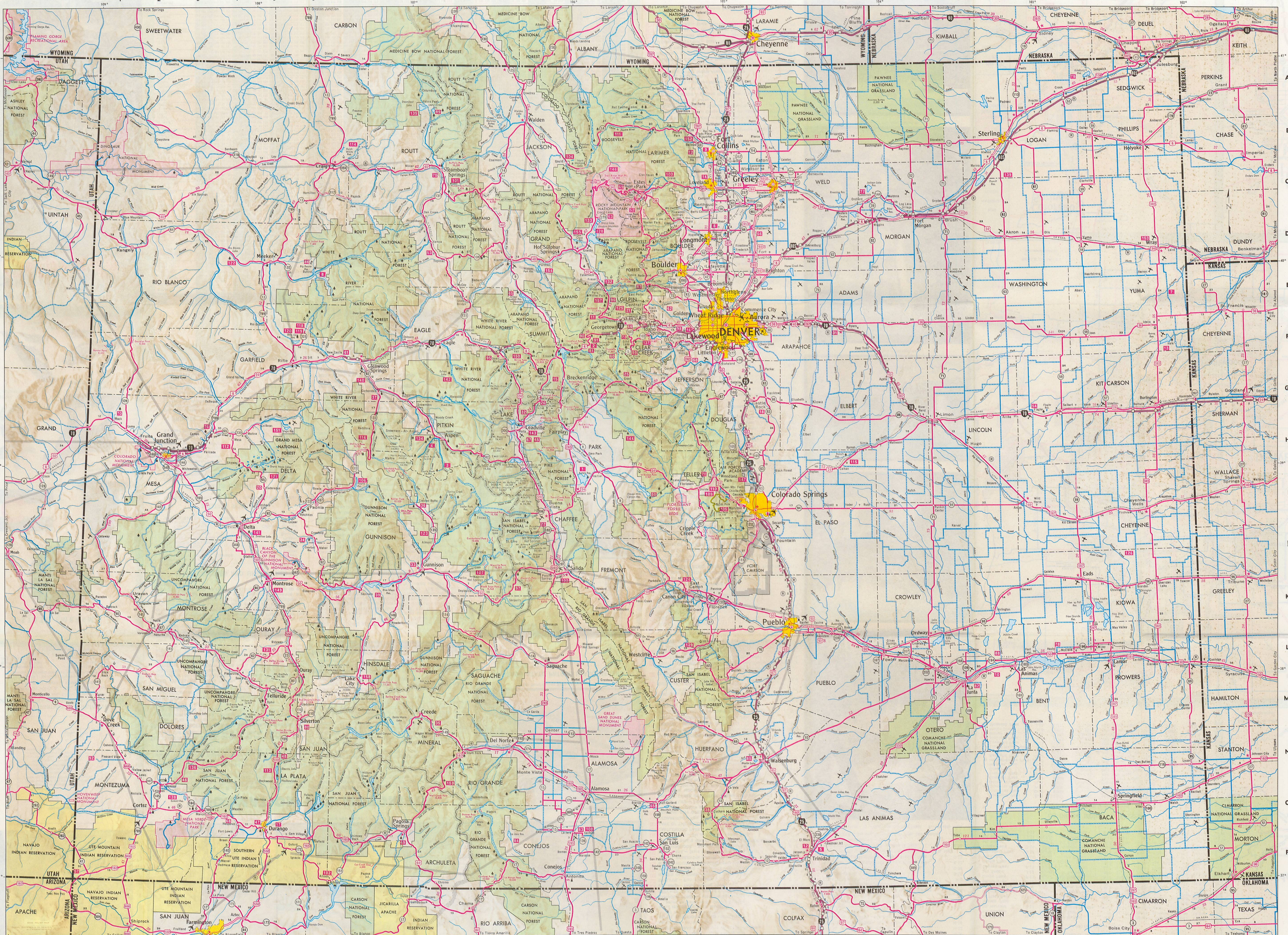


COLORADO INDEX

Population Shown for Incorporated Places
Elevations are shown in feet
Colorado's Population 2,207,259 - Denver's Population 514,678
Cities and Towns 1970 Census

Table with 10 columns listing cities and their populations. Includes entries for Aspen, Avon, Basalt, and many others.



LEGEND
PRINCIPAL THROUGH HIGHWAYS
MULTILANE DIVIDED, ACCESS FULL-CONTROLLED
MULTILANE UNDIVIDED
2 LANE PAVED
SURFACE TREATED
GRAVEL [Local Inquiry should be made UNIMPROVED] concerning road conditions.
CONNECTING COUNTY ROADS
MULTILANE DIVIDED
MULTILANE UNDIVIDED
2 LANE PAVED
SURFACE TREATED
GRAVEL [Local Inquiry should be made UNIMPROVED] concerning the conditions TOLL ROAD 2 LANE
ACCESS POINTS
FULL INTERCHANGE
PARTIAL INTERCHANGE
GRADE SEPARATION
ACCESS DENIED
MILEAGE
MILEAGE BETWEEN POINTS
ACCUMULATED MILEAGE BETWEEN STAMPS
ROUTE MARKERS
INTERSTATE AND STATE
BUSINESS ROUTE (shown on insets only)
UNITED STATES AND STATE
U.S. BUSINESS ROUTE
STATE
MEXICO-CANADA ROUTE (through Colorado)
MAP SYMBOLS
POINTS OF INTEREST
NATIONAL OR STATE FORESTS
MOUNTAIN PASSES
NATIONAL PARKS OR MONUMENT
CONTINENTAL DIVIDE
INDIAN RESERVATIONS
FOREST RANGER HEADQUARTERS
GOVERNMENT RESERVATIONS
REST AREAS
COMMERCIAL AIRPORTS
ROADSIDE PARKS
MILITARY AIRPORTS
CAMPGROUNDS
OTHER AIRPORTS
RECREATION AIR ROUTES FOR LIGHT AIRCRAFT
POPULATION OF CITIES AND MINOR NAMED PLACES
50,000 AND OVER
25,000 - 50,000
10,000 - 25,000
5,000 - 10,000
1,000 - 5,000
0 - 1,000
SCALE, ONE INCH EQUALS 15 MILES