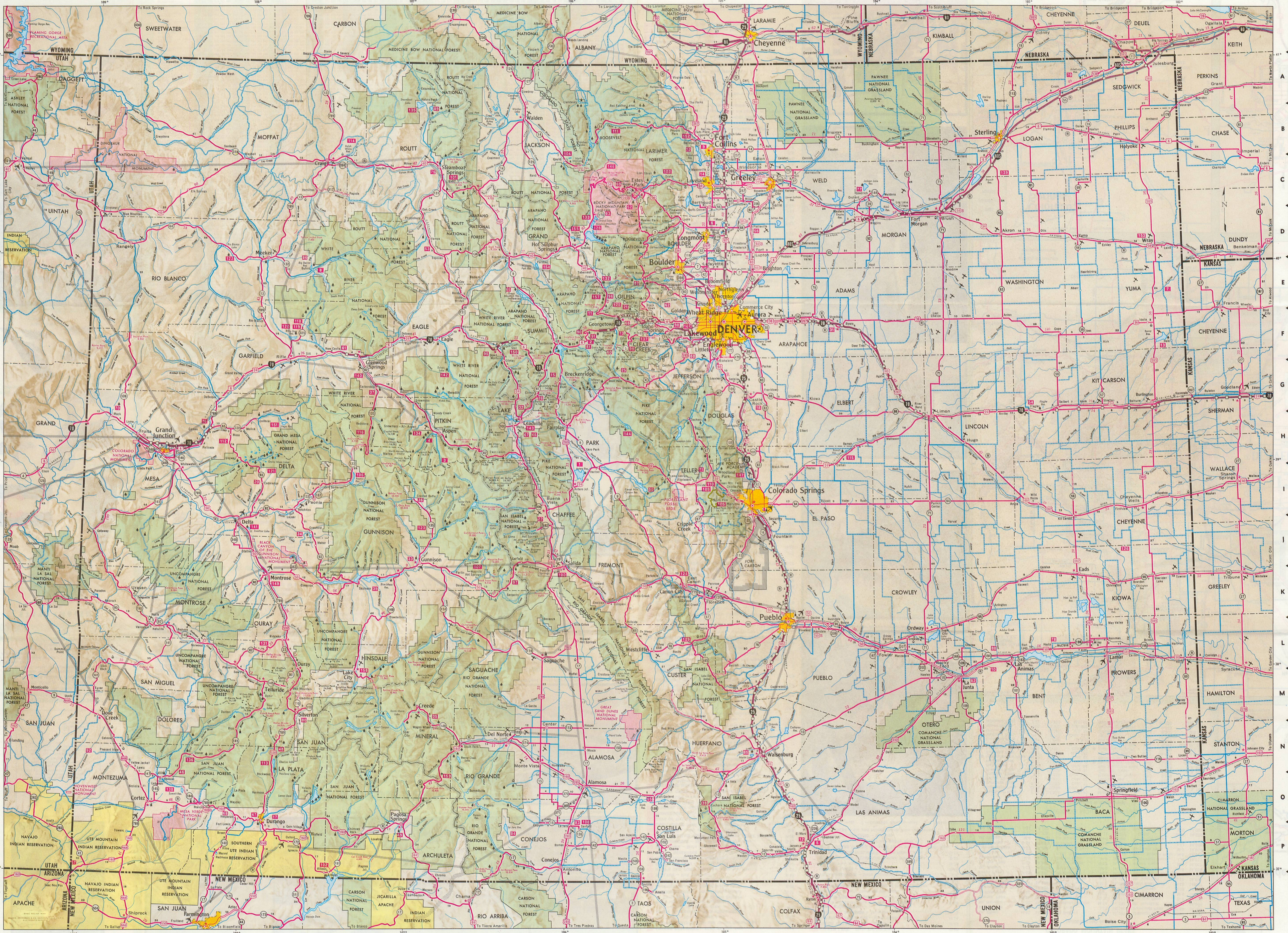


Population Shown for Incorporated Places
Denver's Population 2,207,259 - Denver's Metropolitan Population 5,174,678
Colorado's Population 5,174,678
Cities and Towns 1970 Census

Table with 2 columns: City Name and Population. Lists major cities and their populations as of 1970. Includes Denver (2,207,259), Colorado Springs (425,000), Pueblo (110,000), and many smaller towns.



LEGEND
PRINCIPAL THROUGH HIGHWAYS
MULTILANE DIVIDED ACCESS FULL-CONTROLLED
MULTILANE DIVIDED
MULTILANE UNDIVIDED
2 LANE PAVED
SURFACE TREATED
GRAVEL UNIMPROVED - Local inquiry should be made concerning the conditions
CONNECTING COUNTY ROADS
MULTILANE DIVIDED
MULTILANE UNDIVIDED
2 LANE PAVED
SURFACE TREATED
GRAVEL UNIMPROVED - Local inquiry should be made concerning the conditions
TOLL ROAD 2 LANE
ACCESS POINTS
FULL INTERCHANGE
PARTIAL INTERCHANGE
GRADE SEPARATION
ACCESS DIVIDED
MILEAGE
MILEAGE BETWEEN POINTS
ACCUMULATED MILEAGE BETWEEN STATIONS
ROUTE MARKERS
INTERSTATE AND STATE
BUSINESS LOOP (Shown on insets only)
UNITED STATES AND STATE
MEXICO-CANADA ROUTE (Through Colorado)
The State Highway number is the same as the lowest U. S. number on the route
MAP SYMBOLS
POINTS OF INTEREST
MOUNTAIN PASSES
CONTINENTAL DIVIDE
FOREST RANGER HEADQUARTERS
REST AREAS
ROADSIDE PARKS
CAMPGROUNDS
RECOMMENDED AIR ROUTES FOR LIGHT AIRCRAFT
POPULATION OF CITIES AND MINOR NAMED PLACES
STATE CAPITAL
NATIONAL OR STATE FORESTS
NATIONAL PARKS OR MONUMENT
INDIAN RESERVATIONS
GOVERNMENT RESERVATIONS
COMMERCIAL AIRPORTS
MILITARY AIRPORTS
OTHER AIRPORTS
50,000 AND OVER
25,000 - 50,000
10,000 - 25,000
0 - 1,000
SCALE, ONE INCH EQUALS 15 MILES