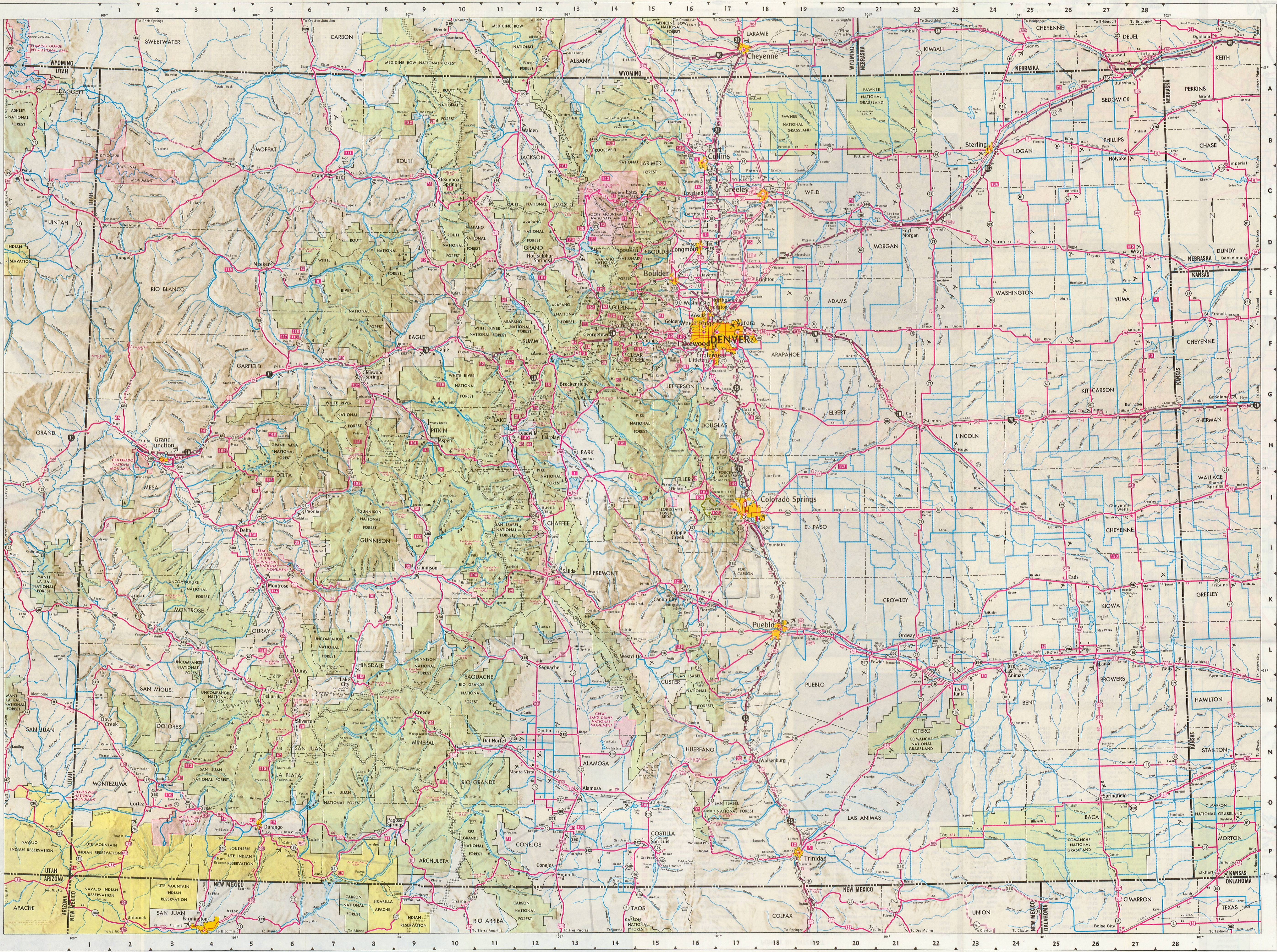


Population Shown for Incorporated Places
Elevations are shown in red
Colorado's Population 1,753,947—Denver's Population 493,887
Cities and Towns 1960 Census

Table with 2 columns: City Name and Population. Lists major cities and their populations as of the 1960 census.



LEGEND

- PRINCIPAL THROUGH HIGHWAYS: MULTILANE DIVIDED, ACCESS FULL-CONTROLLED; MULTILANE DIVIDED; MULTILANE UNDIVIDED; 2 LANE PAVED; SURFACE TREATED; GRAVEL (Local inquiry should be made UNIMPROVED concerning road conditions)
- CONNECTING COUNTY ROADS: MULTILANE DIVIDED; MULTILANE UNDIVIDED; 2 LANE PAVED; SURFACE TREATED; GRAVEL (Local inquiry should be made UNIMPROVED concerning the conditions); TOLL ROAD 2 LANE
- ACCESS POINTS: FULL INTERCHANGE; PARTIAL INTERCHANGE; GRADE SEPARATION; ACCESS DIVIDED
- ROUTE MARKERS: INTERSTATE AND STATE; BUSINESS LOOP (Shown on routes only); UNITED STATES AND STATE (Through Colorado) (The State Highway number is the same as the lowest U.S. number on the route)
- POINTS OF INTEREST: NATIONAL OR STATE FORESTS; MOUNTAIN PASSES; CONTINENTAL DIVIDE; FOREST RANGER HEADQUARTERS; REST AREAS; ROADSIDE PARKS; CAMPGROUNDS; RECREATION AIR ROUTES FOR LIGHT AIRCRAFT; OTHER AIRPORTS
- MILEAGE: MILEAGE BETWEEN POINTS; ACCUMULATED MILEAGE BETWEEN STARS
- POPULATION OF CITIES AND MINOR NAMED PLACES: 50,000 AND OVER; 25,000-50,000; 10,000-25,000; 5,000-10,000; 1,000-5,000; 0-1,000

SCALE, ONE INCH EQUALS 15 MILES