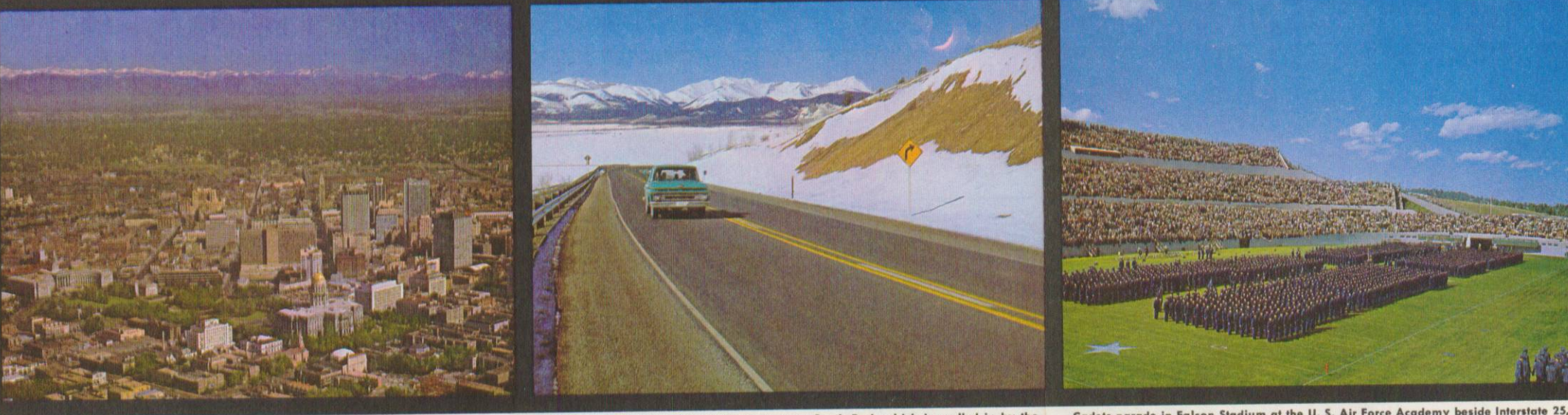




Governor's Photo Portrait by Warren A. Sloun

DEPARTMENT OF HIGHWAYS — STATE OF COLORADO
4001 East Arkansas Ave., Denver, Colorado 80222
GOVERNOR JOHN A. LOVE, Chief Executive
STATE HIGHWAY COMMISSIONERS
CAULEY M. WICKERS, James, Chairman
STREY CHAMBERLIN, Paul, Vice Chairman
STAN L. DODSON, District Supervisor
CLAUDE A. LUTERAN, Steamboat Springs
JAMES F. HILLS, Olathe
PETER MINDRICK, Montrose
ROBERT W. HODGE, Grand Junction
CHAS. D. LEMMON, J. Denver
CHAS. E. SHUMATE, Chief Engineer



The snowcapped Rockies from a backroad in Denver's downtown business area. Photo by Scott Stebbins.

INFORMATION FOR MOTORISTS

COLORADO, Gateway to the Rocky Mountain West, was admitted to the Union in 1876 and is known as the Centennial State. Colorado is the eighth largest state in area and is the highest in average elevation except Alaska. THE HIGHEST ALTITUDE is reached by Mount Elbert's 14,431 feet and the peak is one of 54 which soar to 14,000 feet or more. The Nation's highest paved auto road climbs 14,264 feet to the top of Mount Evans near Denver. Lowest elevation is 3,350 feet near Holly. THE CONTINENTAL DIVIDE, running from north to south, separates the plains on the east from the mountains to the west. SPECTACULAR SCENERY provides backdrops for National and State Parks and their summer and winter playgrounds are offered boating, camping, fishing, hunting or relaxation. More than a score of ski areas have won the State title of "Ski Country, U.S.A."

INTERSTATE HIGHWAYS in Colorado total 946 miles. Interstate 25 runs from north to south, Interstate 70 from east to west and Interstate 80S diagonally from Denver to the northeast corner of the state. Completed portions are indicated by road symbols on the highway map. POPULATION of Colorado is 1,753,947. That of Denver, the capital, is 493,878. The Denver metropolitan area is 1,100,000 by estimate. SPEED LIMITS are posted for the benefit of motorist on practically all State Highways. The lawful speeds are displayed on black-and-white signs. Advisory speeds for road curves or other locations where extra driving care is needed are shown on black-and-yellow signs. In the absence of posted speeds the following limits established by statute are applicable: 20 miles per hour on narrow, winding mountain

STATE COLLEGES AND UNIVERSITIES table listing institutions like Adams State College of Colorado, Golden, and various state universities.

MILITARY ACADEMY table listing United States Air Force Academy, North of Colorado Springs.

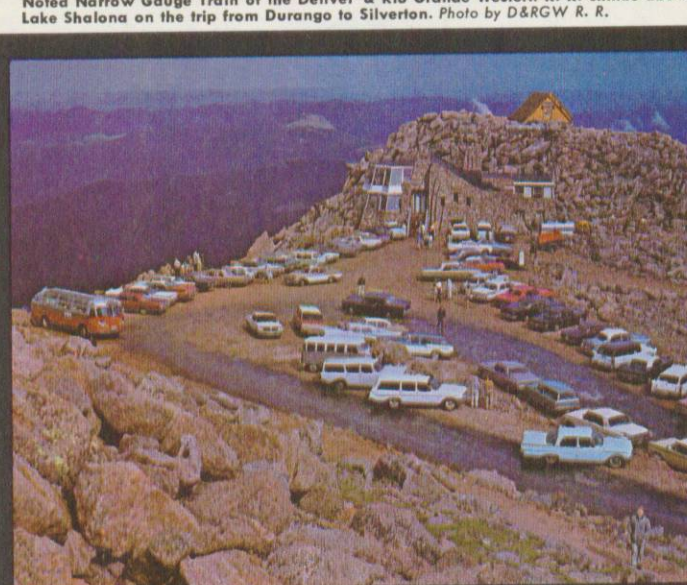
COLORADO STATE PATROL HEADQUARTERS table listing regional offices like State Headquarters, Denver Division, Golden Division, etc.

highways and blind curves; 40 miles per hour on open mountain highways; and 60 miles per hour on other open, surfaced highways. A speed limit of 70 miles per hour is permitted on surfaced, four-lane highways and certain other highways where so posted. ACCIDENTS outside incorporated cities and towns are to be reported to the Colorado State Patrol or to the office of the County Sheriff having jurisdiction. Within an incorporated city or town the local police are to be notified. Drivers involved in traffic accidents are required by law to exchange information with respect to license, registration and to render reasonable assistance to any person injured. SCHOOL BUSES are equipped to display flashing red lights when stopping to discharge or receive school children. A motorist traveling in either direction on a two-way roadway is required to stop before reaching a school bus whenever the flashing lights are in operation. On a four-lane highway with separate roadways for each direction of travel a driver is required to stop for the flashing lights only when traveling in the same direction as the school bus.

COLORADO has many miles of important connecting country roads that in numerous cases are the only access to communities, to scenic and recreational areas. Motorists planning travel in remote areas, particularly on unpaved roads, are advised to make local inquiry concerning road condition and hazards. During the winter months when traveling in remote areas it is advisable to carry an emergency supply of food, water and blankets as well as tire chains. PUBLIC ACCOMMODATIONS LAW in Colorado requires that places of public accommodation shall be open to all persons alike, regardless of race, creed, or ancestry.



Noted Narrow Gauge Train at the Denver & Rio Grande Western R.R. climbs above Lake Shoshone on the trip from Denver to Silverton. Photo by D. W. Stacy.



Golden Aspens paint Cimarron Valley south of US 50 near Montrose. Photo by Robert Daily.

MILEAGE TABLE table providing distances between various Colorado cities and towns.

Colorado EMBLEMS OF STATE graphic including the state seal, flag, bird, flower, tree, and animal.

COLORFUL COLORADO 1965 graphic with stylized text and scenic background.

POINTS OF INTEREST

- ANTERO RESERVOIR — State Recreation Area... 1-13
Arapahoe Basin — Ski and Winter Sports Area... 1-10
ASHCROFT — Winter Sports Area... 1-10
ASPEN, BUTTERMILK, AND HIGHLANDS — Ski and Winter Sports Area... 1-9
BACK HOUSE MUSEUM — Santa Fe Trail and Ki Corson Exhibits... H-9
BEECHER ISLAND — Site of Indian battle... E-28
BEL-AIRE — Trout Rearing Unit... E-6
BELLVIEW — Fish Hatchery... H-23
BENT'S OLD FORT — Historic Trading Post on Old Santa Fe Trail... L-13
BERTHOUD PASS — Ski and Winter Sports Area... L-23
BLOOM MANSION STATE MUSEUM — Victorian Furnishings... P-19
BONNY DAM RESERVOIR — State Recreation Area... G-28
BRECKENRIDGE — Ski and Winter Sports Area... G-12
BRADDOCK — Ski and Winter Sports Area... G-2
BUFFALO BILL'S GRAVE AND PAHASKA TEEPEE MUSEUM... F-16
CASTLEWOOD PARK — State Recreation Area... G-17
CAVE OF THE WINDS — Mile-long Natural Cave... E-6
CEDAREDGE — Fish Hatchery... L-15
CENTRAL CITY OPERA HOUSE — Summer Opera and Play Festival... F-15
CHALK CLIFF — Trout Rearing Unit... J-12
CHERRY CREEK RESERVOIR — State Recreation Area... E-5
CHEYENNE MOUNTAIN — Scenic Mountain Toll Road and Noted Zoo... E-6
CHIPITA — Trout Rearing Unit... E-8
CHRIST OF THE ROCKIES — Highest Religious Statue in North America... G-14
CLIMAX — World's Largest Molybdenum Mine... G-12
COLORADO RAILROAD MUSEUM — Historical Exhibits... E-15
COLORADO SPRINGS ART CENTER — Extensive Art Exhibits... G-12
COLORADO STATE CAPITOL — Colorado Gray Granite with Gold Leaf Dome... E-9
COLORADO STATE MUSEUM — Historic Exhibits, Dioramas... E-9
COOPER HILL — Ski and Winter Sports Area... G-12
CRAWFORD RESERVOIR — State Recreation Area... I-6
CRESTED BUTTE — Ski and Winter Sports Area... I-9
CRYSTAL RIVER — Fish Hatchery... G-8
CUCHARA BASIN — Ski and Winter Sports Area... O-16
DENVER ART MUSEUM — American, European, Modern and Oriental Exhibits... E-9
DENVER BOTANICAL GARDEN — Plant and Flower Displays... E-9
DENVER CIVIC CENTER — Outdoor Amphitheater... E-9
DENVER MUSEUM OF NATURAL HISTORY — Prehistoric Animals, Birds and Flowers... E-9
DENVER ZOO — Large Selection of Foreign and Domestic Animals... E-9
DEXTER CABIN STATE MUSEUM — Mid-Victorian Exhibits... H-12
DOLORES — Trout Rearing Unit... O-3
DURANGO — Fish Hatchery... O-5
DURANGO — Ski and Winter Sports Area... O-5
DURANGO-SILVERTON — Narrow Gauge Railroad... O-5
ELEMEN LAKE RESERVOIR — State Recreation Area... I-15
EL PUEBLO STATE MUSEUM — Replica of Fort Pueblo and Exhibits... O-15
ESTES PARK — Fish Hatchery... C-14
FINGER ROCK — Trout Rearing Unit... D-9
FORT GARLAND STATE MUSEUM — Restored Early-Day Fort... C-15
FORT VASQUEZ STATE MUSEUM — Restored Pioneer Fort... D-17
FOUR CORNERS — Only Point in U. S. Common to Four State Corners... F-1
GARDEN OF THE GODS — Red Sandstone Formations... F-14
GENEVA BASIN — Ski and Winter Sports Area... F-4
GLENWOOD SPRINGS — Fish Hatchery... F-7
GLENWOOD SPRINGS — World's Highest Yacht Anchorage... D-13
GRAND MEESA — Ski and Winter Sports Area... K-5
GREEN MOUNTAIN RESERVOIR — State Recreation Area... E-12
GROSS RESERVOIR — State Recreation Area... E-15
HEALTHY STATE MUSEUM — Exhibits of Silver Mining Era... H-12
HIDDEN VALLEY — Ski and Winter Sports Area... C-14
HOSPITALITY CENTER — Information and Literature about Colorado... O-2
KOSHARE KIVA — Museum, Indian Dances by Boy Scouts... M-23
LA JARA — Fish Hatchery... E-13
LAKE ELDORA — Ski and Winter Sports Area... E-14
LESTER CREEK RESERVOIR — State Recreation Area... A-9
LOVELAND BASIN — Ski and Winter Sports Area... F-13
LOVELAND VALLEY — Ski and Winter Sports Area... F-13
MANitou INCLINE — World's Longest and Highest Cable Railroad... N-17
MARTIN LAKE (Lullup State Park) — State Recreation Area... I-17
MOFFAT TUNNEL — Railroad Tunnel under the Continental Divide... E-14
MONARCH PASS — Ski and Winter Sports Area... K-11
MOTHER CABRINI MUSEUM — To St. Francis Xavier Cabrini... F-16
MOUNT EVANS HIGHWAY — Highest in the U.S. 14,264 ft... K-13
MOUNT SHAVANO — Trout Rearing Unit... F-14
NORTH FORK GUNNISON — Fish Hatchery... I-5
NORTH FORK THOMPSON — Trout Rearing Unit... C-15
NORTH POLE — Santa's Yearly Village and Workshop... I-17
PALOMA RESERVOIR — State Recreation Area... I-7
PETRIED FOREST — Contains World's Largest Petrified Stump... J-15
PIKE STOCKADE STATE HISTORICAL MONUMENT — Replica of Capt. Pike... F-13
PIKE'S PEAK — Toll Road to Summit of 14,110 ft... I-17
PIKE'S PEAK — Ski and Winter Sports Area... I-17
POUDRE PONDS — Trout Rearing Unit... I-15
RAMAH RESERVOIR — State Recreation Area... H-20
RED ROCKS PARK AND AMPHITHEATER — Perfect Acoustic... O-6
RIFLE FALLS — Fish Hatchery... I-3
RIO GRANDE — Trout Rearing Unit... J-9
ROARING JUDY — Fish Hatchery... I-15
ROYAL GEORGE — World's Highest Suspension Bridge... E-14
ST. MARY'S GLACIER — Glacial Ice Formations... E-14
SAND CREEK MASSACRE — Site of Indian Battle... J-27
SEVEN FALLS — Seven Cascades that are Lighted in Summer... O-13
SHADOW MOUNTAIN — A National Recreation Area... D-13
SKELEWILD — Ski and Winter Sports Area... E-9
STEAMBOAT SPRINGS — Ski and Winter Sports Area... C-14
STONER — Ski and Winter Sports Area... N-3
STORM MOUNTAIN — Ski and Winter Sports Area... C-10
SQUAW FALLS — Ski and Winter Sports Area... F-4
SWITZER LAKE — State Recreation Area... G-10
SYLVAN LAKE — State Recreation Area... J-3
TRAIL RIDGE ROAD — Highest Continental Highway at 12,183 ft... C-14
U. S. AIR FORCE ACADEMY — Tours Open to Public... I-17
U. S. MINT — Daily Tours for the Public... E-5
UTE INDIAN MUSEUM — Replica of Chief Curry and Wife Chipeta... K-5
VAND PASS — Ski and Winter Sports Area... F-11
YOGA RESERVOIR — State Recreation Area... H-6
WATSON LAKES — Fish Hatchery... B-16
WRAY — Fish Hatchery... O-28
WILLIAMS FORK RESERVOIR — State Recreation Area... E-12
WILL ROGERS SHRINE — Granite Tower Memorial 100 ft high... D-13
WILLOW CREEK RESERVOIR — State Recreation Area... E-10
WILLOW PARK — Ski and Winter Sports Area... O-13
WOLF CREEK — Ski and Winter Sports Area... E-10

NATIONAL PARKS AND MONUMENTS

- Black Canyon of the Gunnison National Monument... H-2
COLORADO NATIONAL MONUMENT... H-6
DINOSAUR NATIONAL MONUMENT... B-1
GREAT SAND DUNES NATIONAL MONUMENT... N-4
HOVENWEEF NATIONAL MONUMENT... H-1
MESA VERDE NATIONAL PARK AND MUSEUM... C-13
ROCKY MOUNTAIN NATIONAL PARK... C-14

MUSEUMS

Pioneer Museums with exhibits of historic, archaeological, Indian and other items of interest are located in the following cities: Boulder, Canon City, Colorado Springs, Crested, Cripple Creek, Denver, Estes Park, Fairplay, Florissant, Fort Collins, Fort Morgan, Georgetown, Grand Junction, Greeley, Gunnison, Holy Spirit Springs, Julesburg, Golden, La Veta, Leadville, Littleton, Longmont, Loveland, Olathe, Rocky Ford, Silver Lake, Salida, Steamboat Springs, Sterling, Trinidad, Victor.

MINERAL HOT SPRINGS

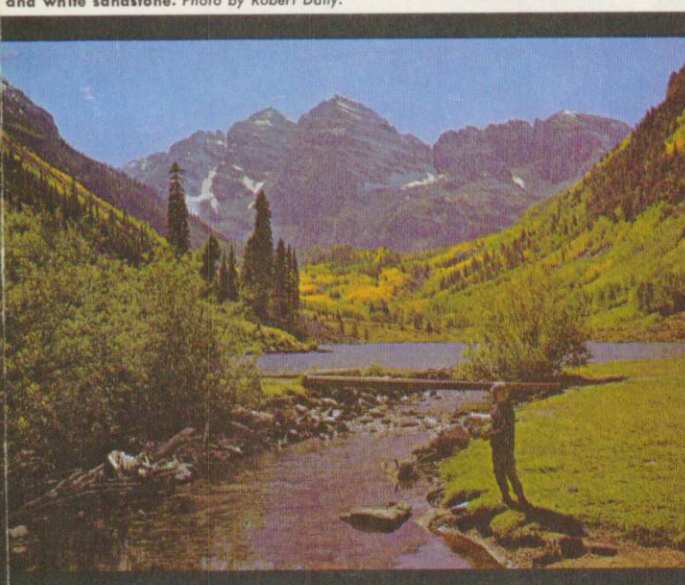
Mineral Hot Springs are located in or near the following towns: Buena Vista, Canon City, Durango, Glenwood Springs, Hartel, Hot Sulphur Springs, Idaho Springs, Manitou, Olathe, Pagosa Springs, Parlin, Poncha Springs, Salida, Steamboat Springs, Wagon Wheel Gap.



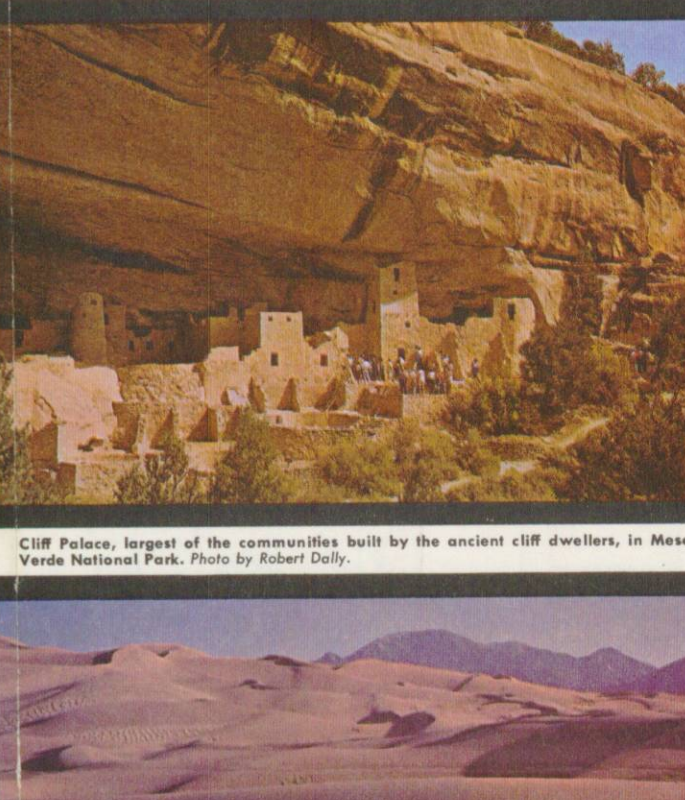
'Ski Country U.S.A.' where young and old enjoy the sport at more than a score of ski areas. Photo by Colo. Division of Commerce and Development.



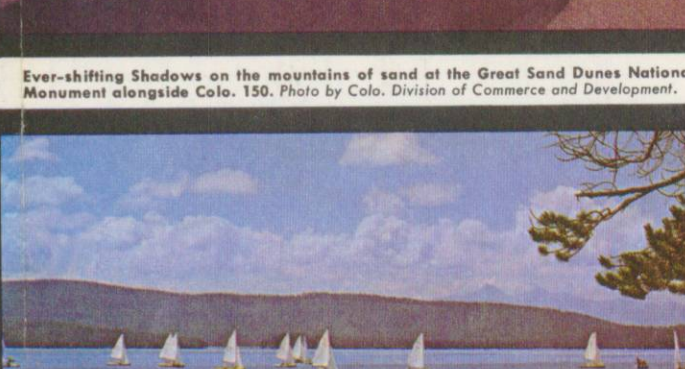
Colorado National Monument, near Grand Junction, where nature sculpted the red and white sandstone. Photo by Robert Daily.



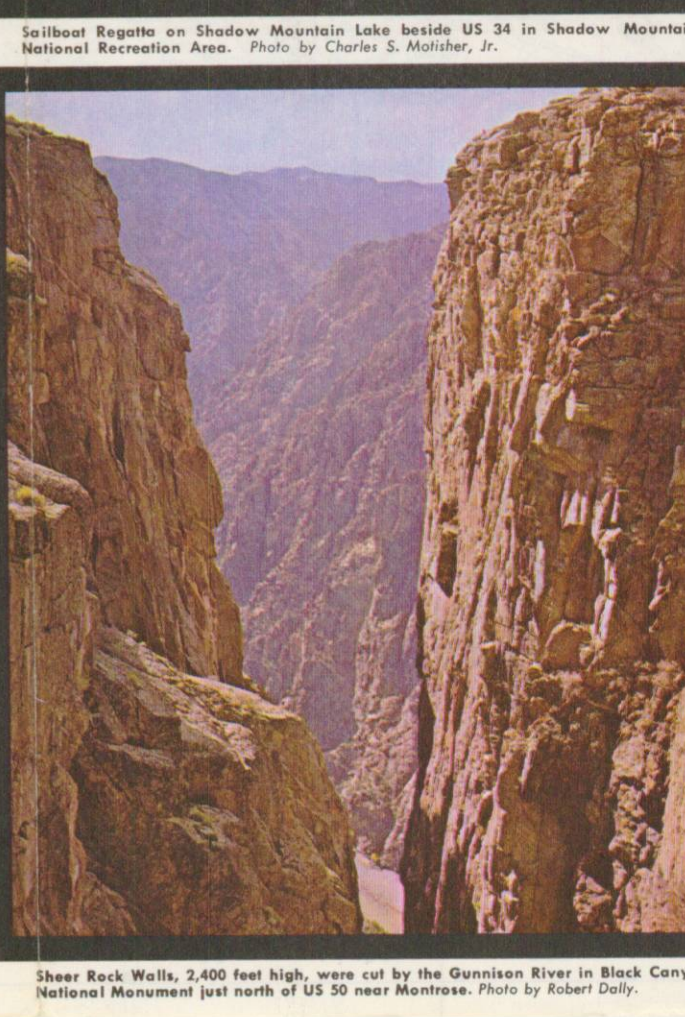
Cliff Palace, largest of the communities built by the ancient cliff dwellers, in Mesa Verde National Park. Photo by Robert Daily.



Ever-shifting Sand dunes on the mountains of sand at the Great Sand Dunes National Monument alongside Cache Pile. Photo by Colo. Division of Commerce and Development.



Iceberg Exposed on Shadow Mountain National Recreation Area. Photo by Charles S. Molitor, Jr.



Sheer Rock Walls, 2,400 feet high, west of the Gunnison River in Black Canyon National Monument just north of US 50 near Montrose. Photo by Robert Daily.

COLORADO MOUNTAIN PEAKS table listing peaks like Mt. Elbert, Mt. Harvard, Mt. Massive, etc., with elevations.

COLORADO MOUNTAIN PASSES table listing passes like Berthoud Pass, Douglas Pass, Fremont Pass, etc., with elevations.

