

# TRAVEL MAP OF COLORADO FOR 1963

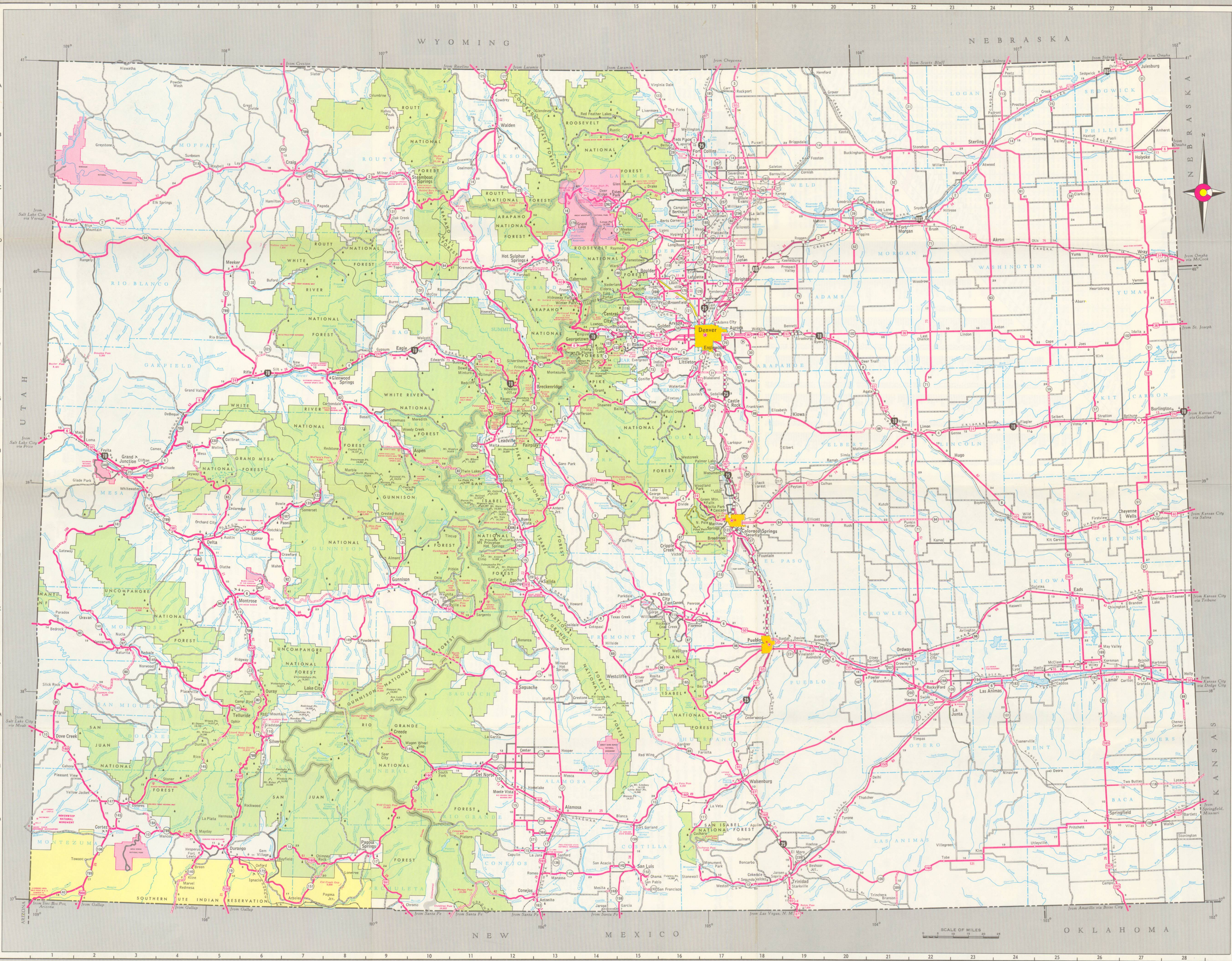
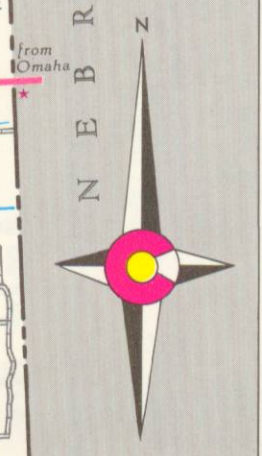
PREPARED BY COLORADO DEPARTMENT OF HIGHWAYS PLANNING AND RESEARCH DIVISION

## LEGEND

- |   |  |                                   |
|---|--|-----------------------------------|
| Divided Highway—Controlled Access                     | Principal Through Highways                         | Main Connecting Roads             |
| Divided Highway                                       | Four or more lanes                                 | Paved                             |
| Toll Road   | Surface Treated                                    | Gravel                            |
| Unimproved (Make local inquiry concerning conditions) | Interstate Numbered Route Marker                   | U. S. Numbered Route Marker       |
| State Numbered Route Marker                           | Mileage between Towns, Junctions, and Interchanges | Accumulated Mileage Between Stars |
| Mountain Passes                                       | Full Interchange                                   | Partial Interchange               |
| Continental Divide                                    | Grade Separation (Access Denied)                   | State Capital                     |
| Ski Tow   | Points of Interest or Historical Places            | County Seat                       |
| Forest Ranger Headquarters                            | Population over 50,000                             | Population 5,000 - 50,000         |
| Roadside Park   | Population 1,000 - 5,000                           | Population 0 - 1,000              |
| Campground  | Commercial Airports (Having Scheduled Flights)     |                                   |
| Military Airports                                     |  |                                   |

- National or State Forest
- National Park or Monument
- Indian Reservation
- U. S. Government Reservation

Note: Individual, detailed county maps of Colorado may be obtained at a nominal charge from the Planning and Research Division, Department of Highways, 4201 E. Arkansas, Denver 22, Colorado.



### CONNECTING ROUTES THROUGH CITIES

