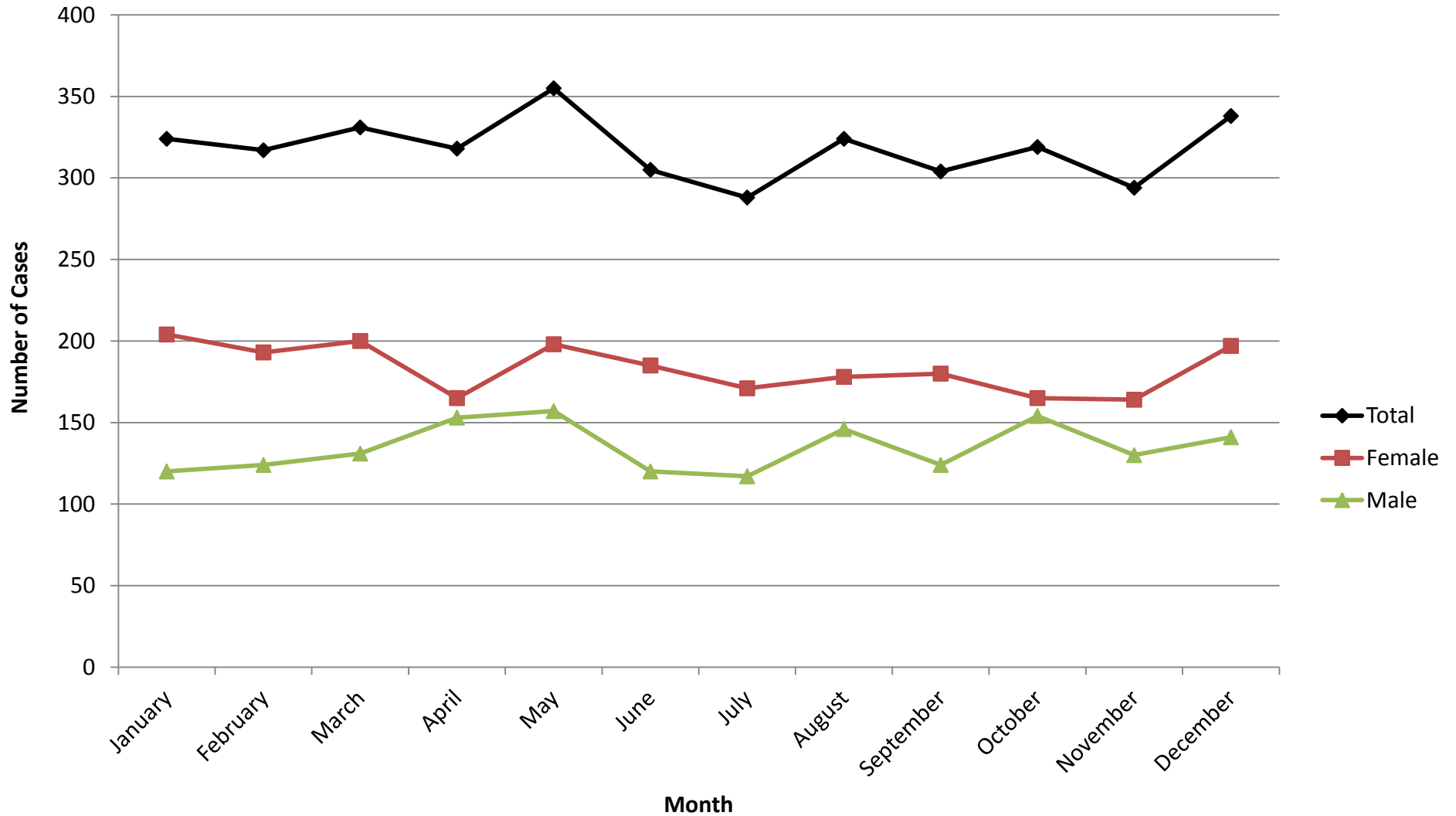


Number of Incident Cases* of *Clostridium difficile* by Month and Gender -- Denver Metropolitan Area (EIP)^, 2012



* **An incident case** is defined as a positive *C. difficile* toxin assay or a positive *C. difficile* molecular assay (e.g. PCR) in a resident of one of the 5 EIP counties who is at least 1 year of age and whose specimen was collected greater than 8 weeks after any previous positive test.

^ EIP - Emerging Infections Program surveillance area which includes the Denver metropolitan counties of Adams, Arapahoe, Denver, Douglas, and Jefferson.