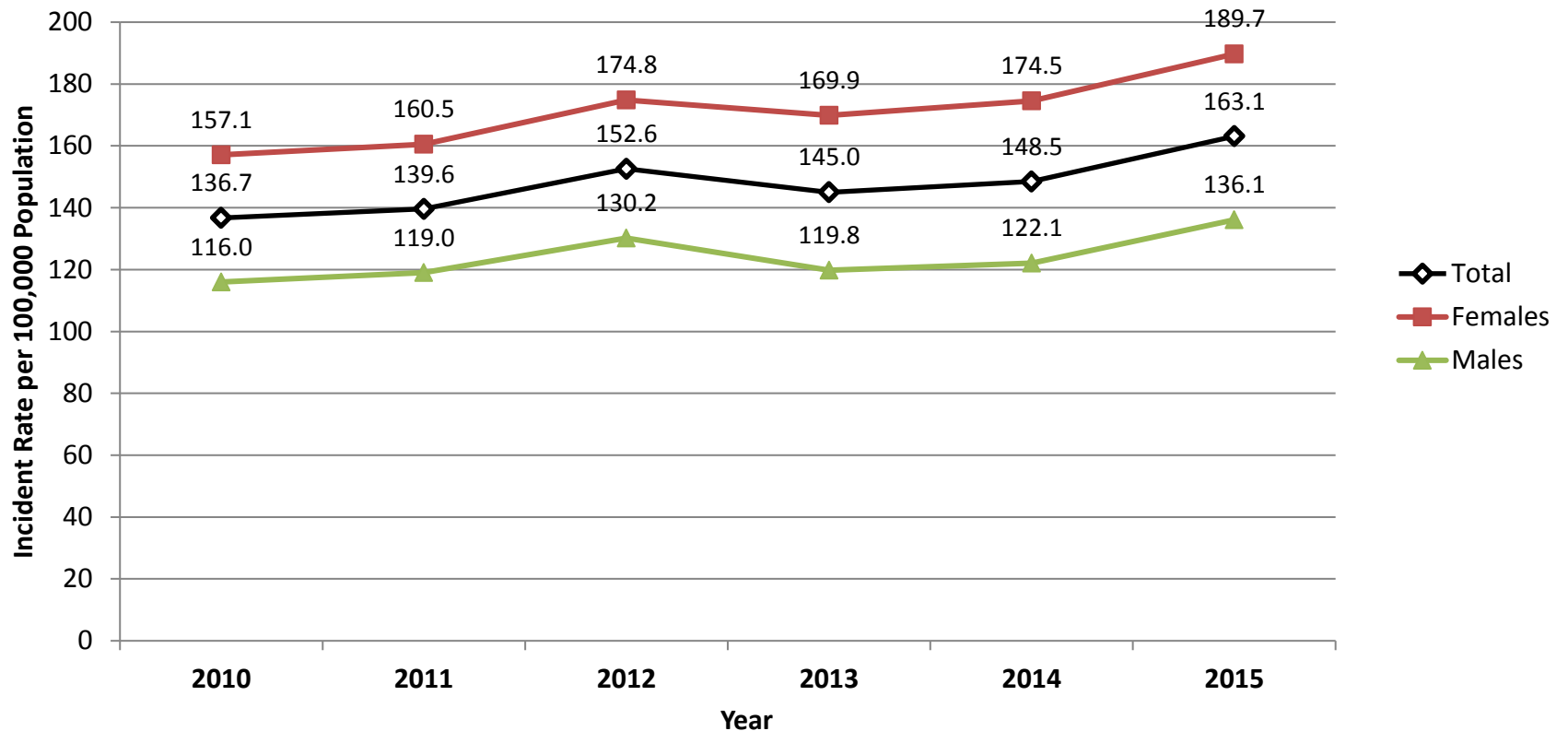


## Incidence Rate\* of *Clostridium difficile* by Gender and Year -- Denver Metropolitan Area (EIP)^, 2010-2015



\* Rates are calculated based upon 2010-2015-based population estimates, State Demography Office – DOLA. Denominators used population  $\geq 1$  year of age.

\*\* **An incident case** is defined as a positive *C. difficile* toxin assay or a positive *C. difficile* molecular assay (e.g. PCR) in a resident of one of the 5 EIP counties who is at least 1 year of age and whose specimen was collected greater than 8 weeks after any previous positive test.

^ EIP - Emerging Infections Program surveillance area, which includes the Denver metropolitan counties of Adams, Arapahoe, Denver, Douglas, and Jefferson