

# **Sexually Transmitted Diseases in Colorado**

## **Surveillance Report: 2003**



---

**Colorado Department  
of Public Health  
and Environment**

**Division of Disease Control  
and  
Environmental Epidemiology**

4300 Cherry Creek Drive South  
Denver, CO 80246-1530

**June 2005**

# Contents

I. State Overview of Sexually Transmitted Diseases, 2003 .....	7
Chlamydia .....	7
Gonorrhea .....	8
Syphilis .....	9
II. State Profile.....	10
Chlamydia .....	10
Gonorrhea .....	14
Syphilis .....	18
III. Special Focus Profiles.....	24
STDs in Women.....	24
STDs in Adolescents and Young Adults .....	27
STDs in Racial and Ethnic Minorities .....	31
IV. Tables.....	35
State Summary Tables .....	36
Chlamydia Tables .....	38
Gonorrhea Tables.....	47
Syphilis Tables.....	57
V. Sources and Limitations of the Data.....	72

## Figures

Figure 1: Chlamydia—Reported rates: Colorado, 1996-2003 .....	11
Figure 2: Chlamydia—Rates by county: Colorado, 2003.....	11
Figure 3: Chlamydia—Rates by region: Colorado, 1996-2003 .....	12
Figure 4: Chlamydia—Rates by gender: Colorado, 1996-2003 .....	12
Figure 5: Chlamydia—Age and gender specific rates: Colorado, 2003 .....	13
Figure 6: Gonorrhea—Reported rates: Colorado, 1985-2003 and the Healthy People Year 2010 objective.....	15
Figure 7: Gonorrhea—Reported rates: Colorado, 1985-2003 and the Healthy People Year 2010 objective.....	15
Figure 8: Gonorrhea—Rates by region: Colorado, 1990-2003 and the Healthy People Year 2010 objective.....	16
Figure 9: Gonorrhea—Rates by gender: Colorado, 1990-2003 and the Healthy People Year 2010 objective.....	16
Figure 10: Gonorrhea—Rates by race and ethnicity: Colorado, 1990-2003 and the Healthy People Year 2010 objective .....	17
Figure 11: Gonorrhea—Age and gender specific rates: Colorado, 2003.....	17
Figure 12: Syphilis—Reported cases by stage of illness: Colorado, 1990-2003.....	20
Figure 13: Primary and secondary syphilis—Reported rates: Colorado, 1990-2003 and the Healthy People Year 2010 objective.....	20
Figure 14: Primary and secondary syphilis—Rates by county: Colorado, 2003.....	21
Figure 15: Primary and secondary syphilis—Rates by region: Colorado, 1990-2003 and the Healthy People Year 2010 objective.....	21
Figure 16: Primary and secondary syphilis—Rates by gender: Colorado, 1990-2003 and the Healthy People Year 2010 objective.....	22
Figure 17: Primary and secondary syphilis—Rates by race and ethnicity: Colorado, 1990- 2003 .....	22
Figure 18: Primary and secondary syphilis—Age and gender specific rates: Colorado, 2003 ....	23

## Additional Figures in the Special Focus Profiles

Figure A: Chlamydia—Rates for women by county: Colorado, 2003 .....	25
Figure B: Gonorrhea—Rates for women by county: Colorado, 2003 .....	25
Figure C: Primary and secondary syphilis—Rates for women by county: Colorado, 2003.....	26
Figure D: Chlamydia—Age specific rates among women 10-44 years of age: Colorado, 1995-2003.....	28
Figure E: Chlamydia—Age specific rates among men 10-44 years of age: Colorado, 1995-2003 .....	28
Figure F: Gonorrhea—Age specific rates among women 10-44 years of age: Colorado, 1990-2003.....	29
Figure G: Gonorrhea—Age specific rates among men 10-44 years of age: Colorado, 1990-2003 .....	29
Figure H: Primary and secondary syphilis—Age specific rates among women 10-44 years of age: Colorado, 1990-2003 .....	30
Figure I: Primary and secondary syphilis—Age specific rates among men 10-44 years of age: Colorado, 1990-2003 .....	30
Figure J: Chlamydia—Rates for 15-19 year old females by race and ethnicity: Colorado, 1990-2003.....	32
Figure K: Chlamydia—Rates for 15-19 year old males by race and ethnicity: Colorado, 1990-2003.....	32
Figure L: Gonorrhea—Rates for 15-19 year old females by race and ethnicity: Colorado, 1990-2003.....	33
Figure M: Gonorrhea—Rates for 15-19 year old males by race and ethnicity: Colorado, 1990-2003.....	33
Figure N: Primary and secondary syphilis—Rates for 15-19 year old females by race and ethnicity: Colorado, 1990-2003 .....	34
Figure O: Primary and secondary syphilis—Rates for 15-19 year old males by race and ethnicity: Colorado, 1990-2003 .....	34

## Tables

Table 1: Characteristics of Reported Chlamydia Cases, 2003.....	7
Table 2: Characteristics of Reported Gonorrhea Cases, 2003 .....	8
Table 3: Characteristics of Reported Primary and Secondary Syphilis Cases, 2003.....	9
Table 4: Cases of sexually transmitted diseases and rates per 100,000 population: Colorado, 1990-2003 .....	36
Table 5: Reported cases of sexually transmitted diseases by gender and reporting source: Colorado, 2003.....	37
Table 6: Chlamydia—Reported cases and rates by county, ranked by rates: Colorado, 2002 .....	38
Table 7: Chlamydia—Reported cases and rates by county/region listed in alphabetical order: Colorado, 1999-2003 .....	40
Table 8: Chlamydia—Women – Reported cases and rates by county/region listed in alphabetical order: Colorado, 1999-2003.....	42
Table 9: Chlamydia—Men – Reported cases and rates by county/region listed in alphabetical order: Colorado, 1999-2003.....	44
Table 10: Chlamydia—Reported cases by age, gender, and race/ethnicity: Colorado, 1999-2003 .....	46
Table 11: Chlamydia—Reported rates by age, gender, and race/ethnicity: Colorado, 1999-2003 .....	45
Table 12: Gonorrhea—Reported cases and rates by county, ranked by rates: Colorado, 2003 ...	48
Table 13: Gonorrhea—Reported cases and rates by county/region listed in alphabetical order: Colorado, 1999- 2003 .....	49
Table 14: Gonorrhea—Women – Reported cases by county/region listed in alphabetical order: Colorado, 1999- 2003 .....	51
Table 15: Gonorrhea—Men – Reported cases and rates by county/region listed in alphabetical order: Colorado, 2003 .....	53
Table 16: Gonorrhea—Reported cases by age, gender, and race/ethnicity: Colorado, 1999-2003 .....	55
Table 17: Gonorrhea—Reported rates by age, gender, and race/ethnicity: Colorado, 1999-2003	56
Table 18: All stages of syphilis—Reported cases and rates by county/region listed in alphabetical order: Colorado, 1999-2003.....	57
Table 19: Primary and secondary syphilis—Reported cases and rates by county: Ranked by rates: Colorado, 2003.....	59
Table 20: Primary and secondary syphilis—Reported cases and rates by county/region listed in alphabetical order: Colorado, 1999-2003 .....	60
Table 21: Primary and secondary syphilis—Women – Reported cases and rates by county/region listed in alphabetical order: Colorado, 1999-2003.....	62
Table 22: Primary and secondary syphilis—Men – Reported cases and rates by county/region listed in alphabetical order: Colorado, 1999-2003.....	64
Table 23: Primary and secondary syphilis—Reported cases by age, gender, and race/ethnicity: Colorado, 1999- 2003 .....	66
Table 24: Primary and secondary syphilis—Reported rates by age, gender, and race/ethnicity: Colorado, 1999- 2003 .....	67
Table 25: Early latent syphilis—Reported cases and rates by county/region listed in alphabetical order: Colorado, 1999-2003.....	68
Table 26: Late and late latent syphilis—Reported cases and rates by county/region listed in alphabetical order: Colorado, 1999-2003 .....	70

## **Acknowledgements**

The cooperation of the local health departments, physicians, health care providers, and laboratories is greatly appreciated. Without their cooperation, it would not be possible to adequately perform surveillance for Sexually Transmitted Diseases (STDs).

This report was prepared and edited by: Lisa Miller, Director, Disease Control and Environmental Epidemiology Division (DCEED) and by the following staff of the STD/HIV Section, DCEED, CDPHE: Peter Brandauer, Letoynia Coombs, Jennifer Donnelly and Allison Crutchfield.

# I. State Overview of Sexually Transmitted Diseases, 2003

## Chlamydia

In 2003, 12,900 cases of genital *Chlamydia trachomatis* infection were reported to the Colorado Department of Public Health and Environment (CDPHE). This case count corresponds to a rate of 281.3 cases per 100,000 persons, a decrease of 6.6 percent compared with the rate of 301.3 cases per 100,000 in 2002. The majority of cases in 2003 were reported in women (75.6 percent). The 20-24 and 15-19 age groups continue to have the highest age-specific chlamydia rates. By race/ethnicity, Blacks had the highest rate (695.6 per 100,000), which was over 11 times the rate among Whites (60.7 per 100,000). Hispanics had a rate (311.1 per 100,000) over 5 times that of Whites.

**Table 1: Characteristics of Reported Chlamydia Cases, 2003**

Category	2003 Reported Cases % Change*			
	Cases	Percent	Rate	2002-2003
<b>Sex</b>				
Male	3154	24.5	136.6	-11.4
Female	9746	75.6	428.1	-5.0
<b>Age (years)</b>				
0-9	26	0.2	4.1	-29.0
10-14	163	1.3	50.3	-22.3
15-19	3941	30.9	1156.4	-12.5
20-24	4998	39.2	1572.1	-4.8
25-34	2902	22.7	424.1	-0.9
35-44	592	4.6	81.0	1.4
45+	145	1.1	9.4	-8.6
<b>Race/Ethnicity</b>				
White, Non-Hispanic	2064	34.3	60.7	-12.3
Black, Non-Hispanic	1373	22.8	695.6	-21.6
Hispanic	2432	40.4	311.1	-10.0
Asian Pacific Islander	92	1.5	69.6	-9.5
American Indian	63	1.1	89.1	3.0
<b>Region</b>				
Non-Denver Metro	5988	46.4	253.9	0.0
Denver Metro	6912	53.6	310.5	-11.7
<b>Total</b>	12900	100.0	281.3	-6.6
* Percent change in rate per 100,000 from 2001-2002.				

## Gonorrhea

In 2003, 2,820 cases of gonorrhea were reported to CDPHE. This represents a 17.0 percent decrease from 2002 when 3,396 cases were reported. The gonorrhea rate for 2003 (61.5 cases per 100,000 persons) decreased 18.1 percent from the 2002 rate (75.1 cases per 100,000 persons). The Colorado 2003 rate for gonorrhea exceeds the Healthy People (HP2010) 2010 objective of 19 cases per 100,000 by three times.

The 20-24 and 15-19 age groups had the highest age specific gonorrhea rates (271.5 and 189.0 per 100,000, respectively). Female gonorrhea rates were higher than male gonorrhea rates in 2003 (66.6 and 56.3 cases per 100,000, respectively). The highest age specific age rate was in the 20-24 age group (271.5 per 100,000).

By race/ethnicity, Blacks had the largest number of cases (845) and the highest gonorrhea rates (428.1 per 100,000). They were disproportionately affected in comparison to their proportion of the total population (42.6 percent of gonorrhea cases compared to four percent of the population). Hispanics were also over represented; they comprised 29.0 percent of the gonorrhea cases and constitute 19 percent of Colorado's population.

**Table 2: Characteristics of Reported Gonorrhea Cases, 2003**

Category	2003 Reported Cases			% Change*
	Cases	Percent	Rate	2002-2003
<b>Sex</b>				
Male	1305	46.3	56.5	-29.1
Female	1515	53.7	66.6	-5.6
<b>Age (years)</b>				
0-9	5	0.2	0.8	22.9
10-14	31	1.1	9.6	-28.5
15-19	644	22.9	189.0	-10.4
20-24	863	30.7	271.5	-15.0
25-34	781	27.7	114.1	-20.2
35-44	364	12.9	49.8	-26.7
45+	127	4.5	8.2	-28.3
<b>Race/Ethnicity</b>				
White, Non-Hispanic	531	26.7	15.6	-24.3
Black, Non-Hispanic	845	42.6	428.1	-22.8
Hispanic	575	29.0	73.5	-22.2
Asian Pacific Islander	26	1.3	19.7	33.3
American Indian	9	0.5	12.7	-26.4
<b>Region</b>				
Non-Denver Metro	725	25.7	30.7	5.2
Denver Metro	2095	74.3	94.1	-24.0
<b>Total</b>	<b>2820</b>	<b>100.0</b>	<b>61.5</b>	<b>-17.0</b>

\* Percent change in rate per 100,000 from 2001-2002.



## Syphilis

Forty-six cases of primary and secondary (P&S) syphilis were reported in 2003, a decrease of 28.1 percent from 2002 when 64 cases were reported. The case numbers translate to a P&S syphilis rate of 1.0 per 100,000 in 2003 and 1.4 per 100,000 in 2002. The rate remains above the HP2010 goal of 0.2 per 100,000.

In 2003, the majority of the P&S syphilis cases were male (89.1 percent) and White (62.8 percent). The rate reported among Blacks (4.1 per 100,000) was 5 times the rate reported among Whites (0.8 per 100,000). The 35-44 age group had the largest percentage of cases (43.5 percent). More than 80 percent of all P&S syphilis cases reported were from Denver County. Three cases of congenital syphilis were reported in 2003 (Table 5).

**Table 3: Characteristics of Reported Primary and Secondary Syphilis Cases, 2003**

Category	2003 Reported Cases			% Change*
	Cases	Percent	Rate	2002-2003
<b>Sex</b>				
Male	41	89.1	1.8	-34.8
Female	5	10.9	0.2	146.5
<b>Age (years)</b>				
0-9	0	0.0	0.0	0.0
10-14	0	0.0	0.0	0.0
15-19	1	2.2	0.3	-1.2
20-24	3	6.5	0.9	-27.2
25-34	13	28.3	1.9	-7.0
35-44	20	43.5	2.7	-37.0
45+	9	19.6	0.6	-32.8
<b>Race/Ethnicity</b>				
White, Non-Hispanic	27	62.8	0.8	-39.1
Black, Non-Hispanic	8	18.6	4.1	12.3
Hispanic	8	18.6	1.0	-22.9
Asian Pacific Islander	0	0.0	0.0	0.0
American Indian	0	0.0	0.0	0.0
<b>Region</b>				
Non-Denver Metro	7	15.2	0.3	-23.3
Denver Metro	39	84.8	1.8	-30.1
<b>Total</b>	<b>46</b>	<b>100.0</b>	<b>1.0</b>	<b>-28.1</b>

\* Percent change in rate per 100,000 from 2001-2002.

## II. State Profile

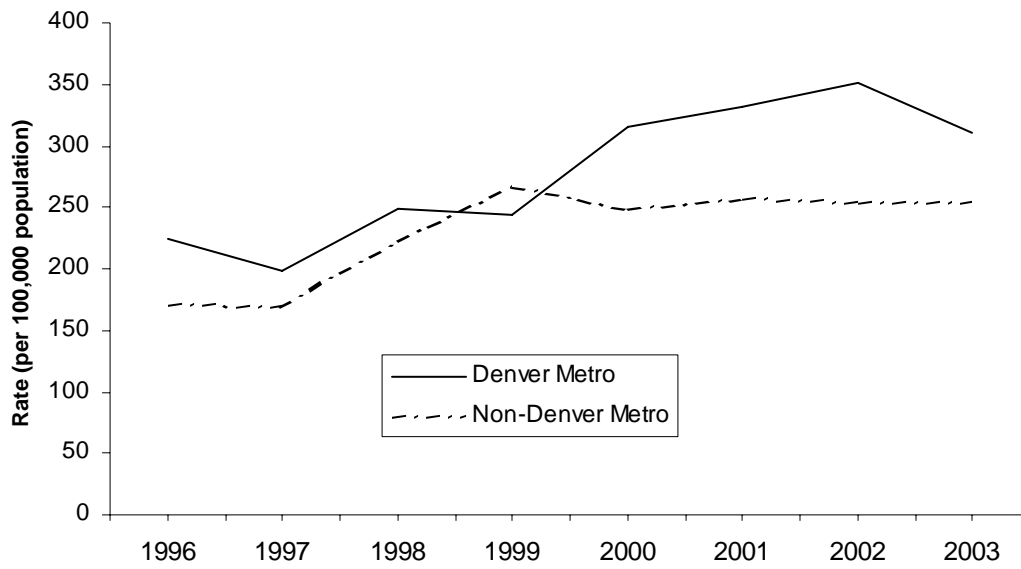
### Chlamydia

*Chlamydia trachomatis* infection is the most commonly reported notifiable disease in Colorado. It is the most prevalent of all STDs and comprise the largest proportion of all STDs reported to CDPHE (Table 4). Reported rates of chlamydia infection are higher in women since the initiation of public programs for screening and treatment to prevent pelvic inflammatory disease, infertility and other complications.

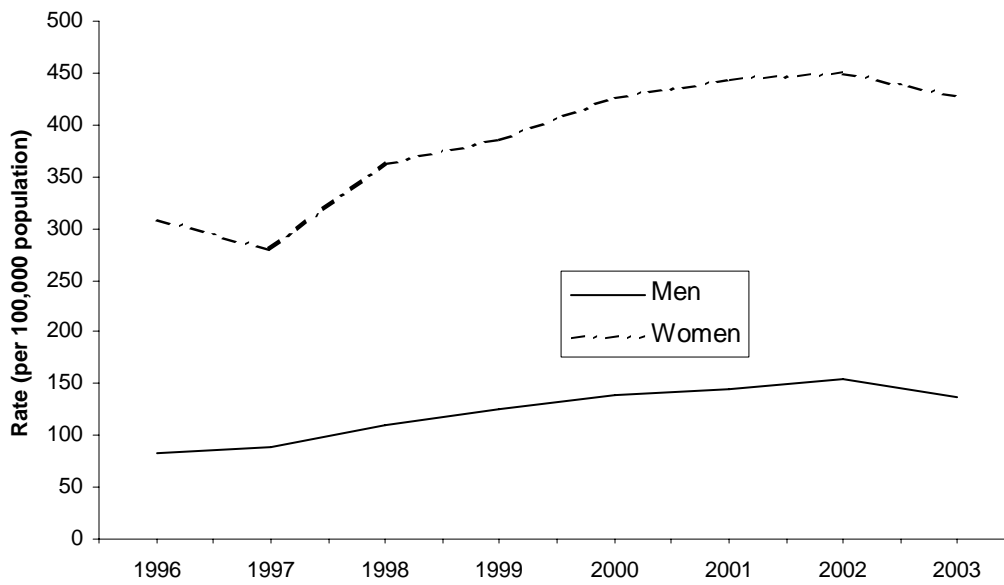
- In 2003, 12,900 chlamydial infections were reported to CDPHE. This case count corresponds to a rate of 281.3 cases per 100,000 persons, a decrease of 6.6 percent compared with the rate of 301.3 per 100,000 in 2002. From 1996 through 2002, the reported rates of chlamydial infections increased from 196.7 to 301.3.
- From 2000 to 2003, the chlamydia case rates in the Denver metropolitan region of Colorado (315.8, 331.3, 351.6, 310.5 cases per 100,000 persons, respectively) were higher than the rest of the state (249.0, 257.6, 253.8, 253.9 cases per 100,000 persons, respectively) (Figure 3, Table 7).
- In 2003, the overall reported rate of chlamydial infection among women in Colorado (428.1 cases per 100,000 females) was over three times higher than the reported rate among men (136.6 cases per 100,000 males). A partial explanation for that disparity is that males are screened far less frequently than females in the state. Male partners of female patients with chlamydial infections sometimes receive treatment without a confirmatory test. From 1999 to 2003, the reported chlamydial infection rate increased by 8.8 percent for men and 10.9 percent for women (Figure 4, Table 8, Table 9).
- For women, the highest age specific reported rates of chlamydia in 2003 occurred among 20-24 year olds (2513.2 per 100,000), followed by 15-19 year olds (2077.2 per 100,000). Age specific reported rates among men, while substantially lower than women, were highest in 20-24 year olds (738.9 per 100,000) and 25-29 year-olds (377.4 per 100,000) (Figure 5, Table 11).
- In 2003, the rate of reported chlamydial cases among Black females in Colorado was approximately 10 times higher than the rate among White females (793.7 and 83.5 cases per 100,000, respectively). The rate of reported chlamydia cases among Colorado Black males was 16 times greater than the rate among White males (604.3 And 37.7 per 100,000, respectively) (Table 11). Refer to the section entitled *Sources and Limitations of the Data* for specific information affecting interpretation of the above data.



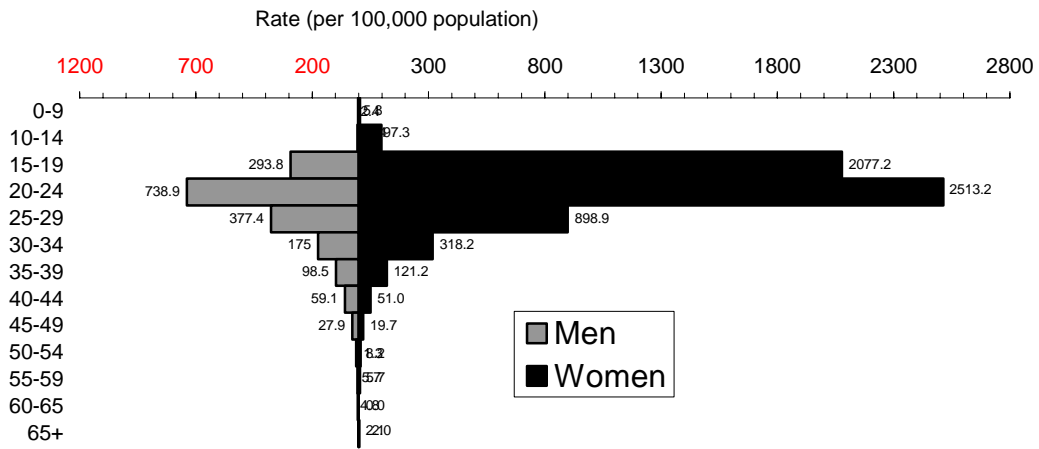
**Figure 3: Chlamydia—Rates by region: Colorado, 1996-2003**



**Figure 4: Chlamydia—Rates by gender: Colorado, 1996-2003**



**Figure 5: Chlamydia—Age and gender specific rates: Colorado, 2003**



Age	Gender Total
0-9	4.1
10-14	50.3
15-19	1156.4
20-24	1572.1
25-29	626.1
30-34	243.2
35-39	109.5
40-44	55.1
45-49	23.8
50-54	9.7
55-59	5.7
60-65	2.3
65+	2.0
Total	

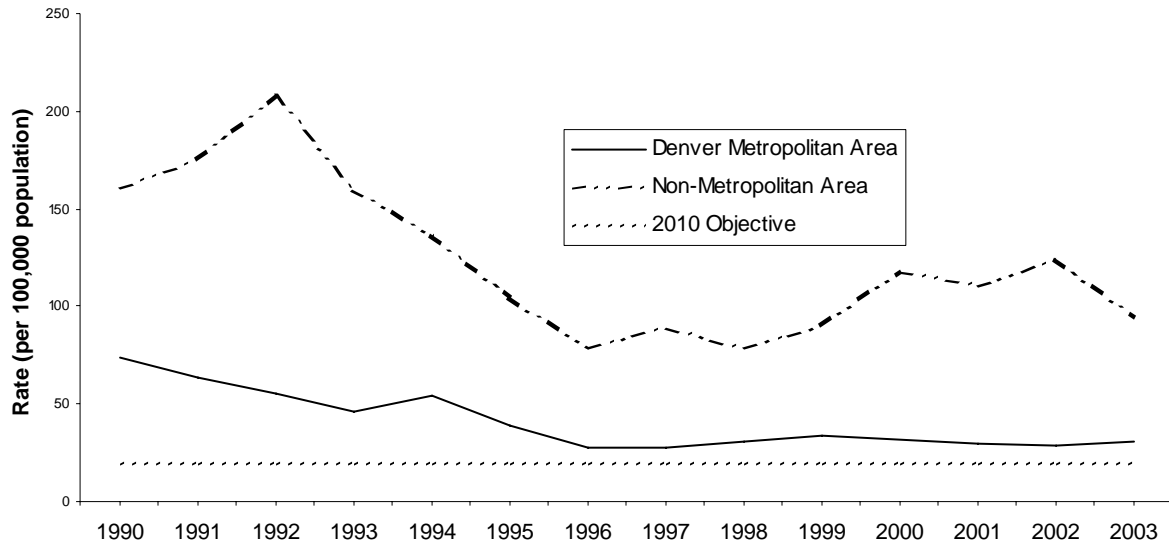
## Gonorrhea

Following a decline (80.8 percent) from 1985 to 1996, the rate of reported gonorrhea cases began to increase in 1997. Between 1997 and 2003, gonorrhea rates fluctuated but overall were seen to increase (Table 4, Figure 6).

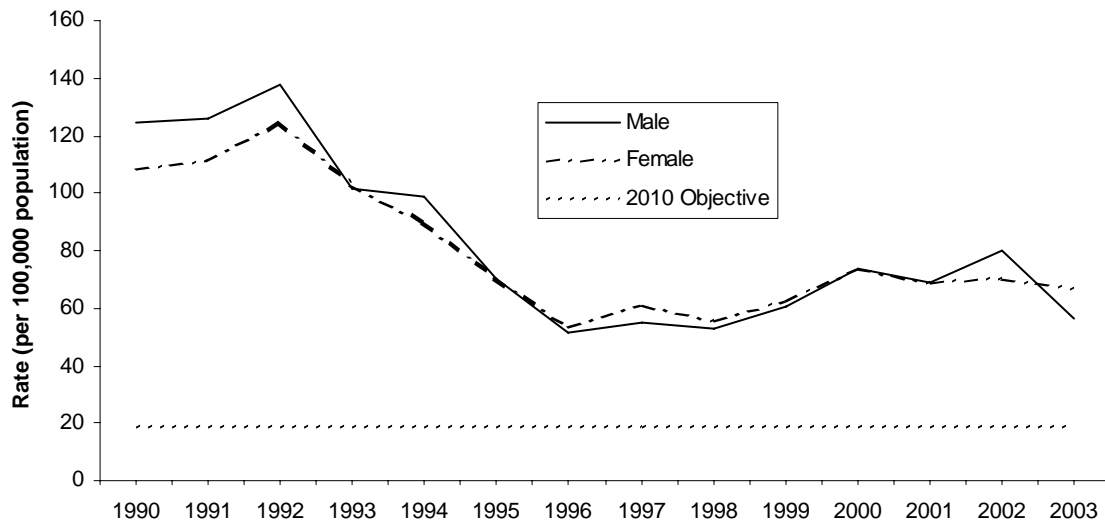
- In 2003, 2,820 cases of gonorrhea were reported in Colorado (Table 4).
- The rate of reported gonorrhea in Colorado was 61.5 cases per 100,000 population in 2003, which was lower than the rates for the previous four years (61.6 in 1999, 73.7 in 2000, 69.2 in 2001, 75.1 in 2002) (Table 13).
- In 2003, 44 counties reported cases of gonorrhea. Twenty of these counties reported rates below the Healthy People 2010 national objective of 19 cases per 100,000 persons (Figure 7 and Table 12).
- Gonorrhea rates in the Denver metropolitan area decreased from 2002 to 2003, while rates in the non-Denver metropolitan area increased slightly. In 2003, as in previous reporting years, the Denver metropolitan area had a much higher gonorrhea rate than the non-Denver metropolitan area (94.1 in the Denver metropolitan area and 30.7 in the non-Denver metropolitan area) (Figure 8, Table 13).
- The rate of gonorrhea among women decreased between 2002 and 2003 (70.5 and 66.6 cases per 100,000, respectively) (Figure 9, Table 14). The gonorrhea rate in men decreased as well with 79.7 and 56.5 cases per 100,000 in 2002 and 2003, respectively (Figure 9, Table 15).
- By race/ethnicity, case rates decrease in all racial groups, with the exception of Asian/Pacific Islanders. The 2003, rate among Blacks (428.1 per 100,000) was 22.8 percent lower than the rate reported in 2002 (554.4 per 100,000). Rates among Whites (20.6 in 2002 and 15.6 in 2003) and Hispanics (94.5 in 2002 and 73.5 in 2003) decreased by 24.3 percent and 22.2 percent, respectively. Rates among American Indians/Alaska Natives had a 26.6 percent decrease between 2002 (17.3 per 100,000) and 2003 (12.7 per 100,000) (Figure 10 and Table 17). Rates among Asian/Pacific Islanders increased 33.1 percent (14.8 in 2002 and 19.7 in 2003). In 2003, the reported rate for Blacks was about 27 times greater than the rate for Whites while the rate for Hispanics was about 5 times greater than the rate for Whites.
- In 2003, 20-24 year olds (205.8 per 100,000) and 25-29 year olds (144.9 per 100,000) had the highest age specific rates of gonorrhea in men. In women, 20-24 year olds (345.6 per 100,000) and 15-19 year olds (291.8 per 100,000) had the highest age specific rates of gonorrhea (Figure 11, Table 17).



**Figure 8: Gonorrhea—Rates by region: Colorado, 1990-2003 and the Healthy People Year 2010 objective**

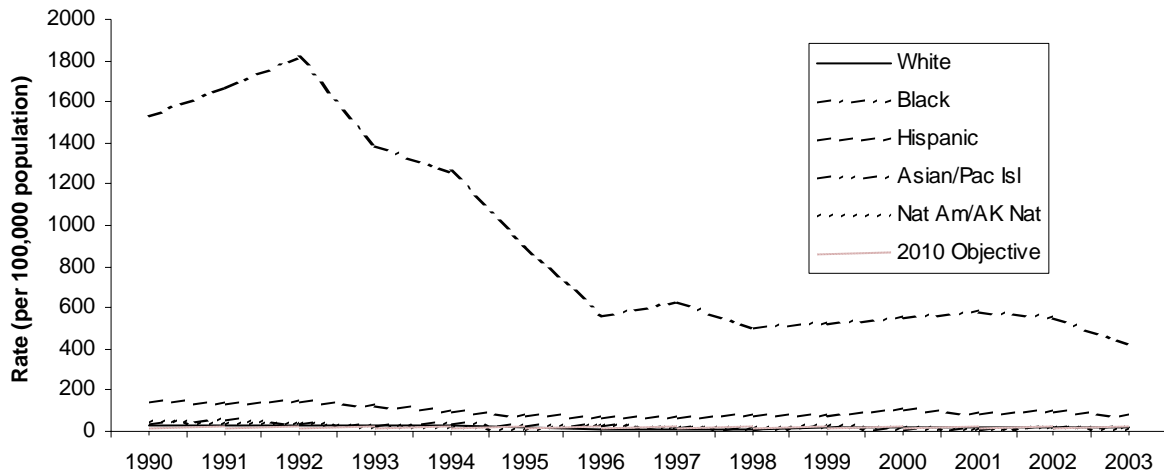


**Figure 9: Gonorrhea—Rates by gender: Colorado, 1990-2003 and the Healthy People Year 2010 objective**

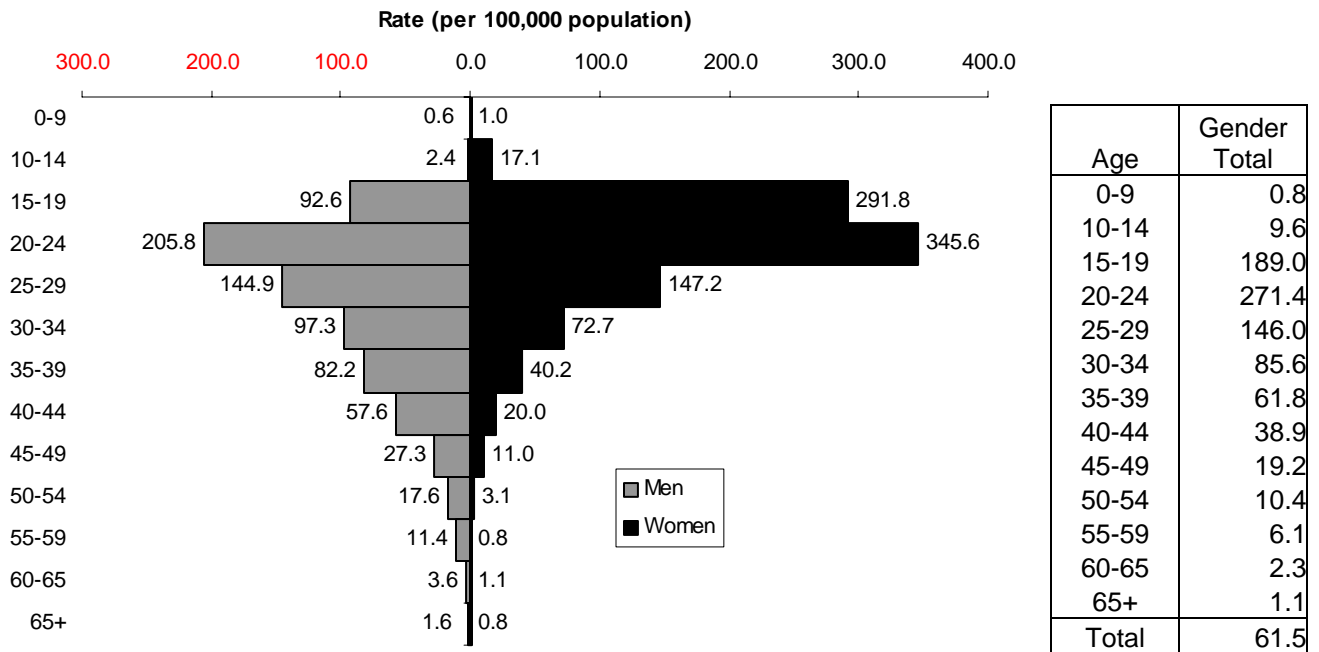




**Figure 10: Gonorrhea—Rates by race and ethnicity: Colorado, 1990-2003 and the Healthy People Year 2010 objective**



**Figure 11: Gonorrhea—Age and gender specific rates: Colorado, 2003**



# Syphilis

Syphilis is a complex STD. Syphilis cases are classified by disease stage following CDPHE case review by epidemiologists at the time of initial specimen collection. The following classifications (stages) are recognized by the CDPHE and the Centers for Disease Control and Prevention for purposes of characterizing a new case:

- Primary – a painless chancre (sore) appears at the site of infection usually within three weeks following exposure. This is the most infectious stage of syphilis.
- Secondary – diagnosis based on the presence of skin and/or mucous membrane lesions. These symptoms typically last an average of four weeks and may recur.
- Early Latent – no observable clinical symptoms are present, although serologic tests are reactive. This occurs within the first year of infection.
- Latent, of unknown duration – no observable clinical symptoms are present although serological tests are reactive. It is unknown when this infection occurred.
- Late latent – no observable clinical symptoms are present although serological tests are reactive. This occurs more than one year since becoming infected.
- Late with symptomatic manifestations – clinical symptoms are present, but the infection was acquired greater than one year ago.
- Neurosyphilis – occurs late in the course of infection and varies depending on the type and degree of central nervous system involvement.
- Congenital Syphilis- passed from mother to child. This is a potentially fatal disease to the newborn.

Data for all stages is collected and monitored. Because infections are most likely to be transmitted when a patient has primary or secondary syphilis, cases in these two stages are generally used by public health to characterize the status of recent infections in the United States.

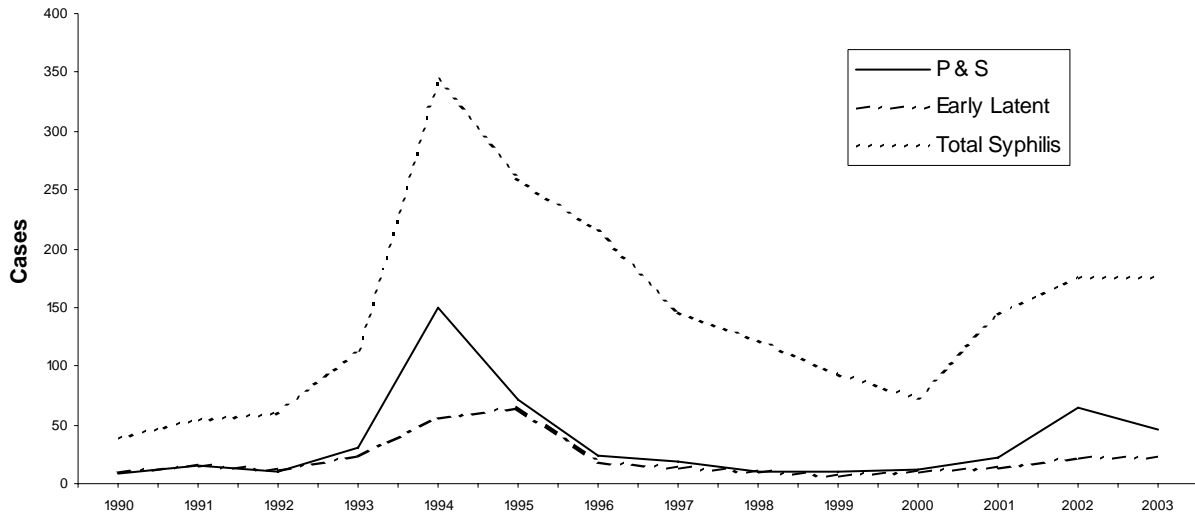
The rate of primary and secondary (P&S) syphilis in Colorado peaked in 1994 and steadily decreased through 1998. After 1998, cases increased by approximately one case per year until 2001 when the number of cases nearly doubled and 2002 when the number of cases nearly tripled (Figure 12, Table 4).

- P&S syphilis cases reported to the CDPHE decreased from 64 cases in 2002 to 46 in 2003. The reported rate of P&S syphilis in Colorado in 2003 (1.0 per 100,000 persons) was 28.6 percent lower than the rate reported in 2002 (1.4 cases per 100,000). Both rates are higher than the HP2010 objective of 0.2 cases per 100,000 persons (Figure 13, Table 4).
- In 2003, eight Colorado counties reported cases of P&S syphilis. In 2003, Denver County accounted for 67.4 percent of the total P&S syphilis cases reported in 2003 (Figure 14, Table 19, Table 20).
- The reported rate of P&S syphilis among men (1.8 cases per 100,000 males) was nine times greater than the rate among women (0.2 cases per 100,000 females) in 2003. The overall male to female rate ratio increased steadily from 1999 to 2002 but decreased in 2003. (Figure 16, Table 24).
- The percentage of P&S cases among men who have sex with men has been increasing since 1999: 20 percent in 1999, 38 percent in 2000, 59 percent in 2001, 69 percent in 2002, and 83 percent in 2003.
- In 2001, 32 percent of the male P&S syphilis cases were known to be HIV positive. During 2002, 45 percent of male cases were known to be HIV

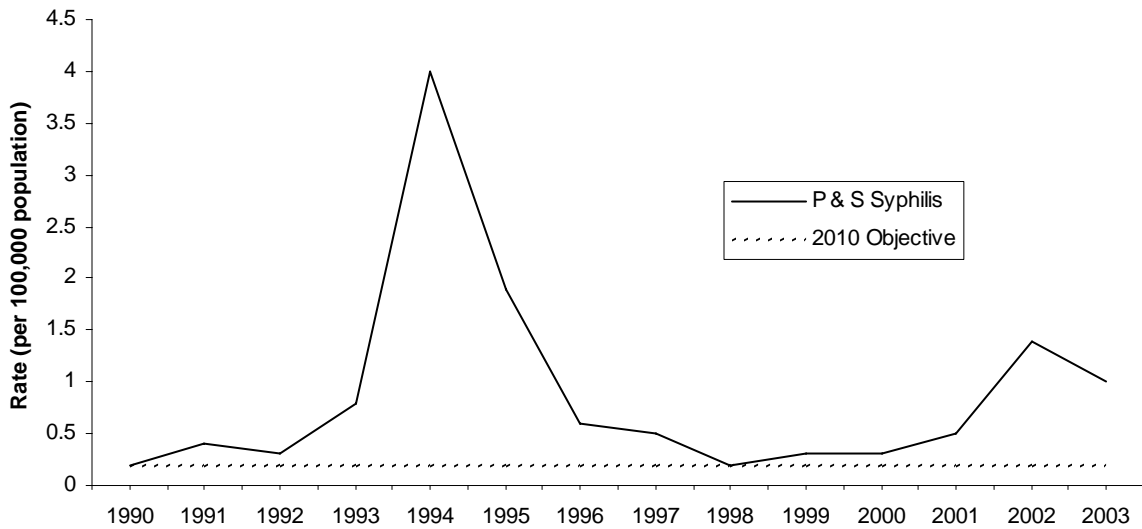
positive. In 2003, 41 percent were known to be HIV positive. This raises concerns due to the more efficient transmission of HIV during P&S syphilis, and because co-infection with HIV can lead to faster progression to severe clinical manifestations of syphilis that may require a longer course of treatment.

- In 2003, the overall rate of P&S syphilis reported in Blacks (4.1 cases per 100,000 persons) was five times greater than the rate reported in Whites (0.8 case per 100,000 persons). However, this differential was substantially less than in 1998, when the rate of P&S syphilis among Blacks was 28 times greater than the rate reported among Whites (Table 24).
- The rates of P&S syphilis for Blacks, Hispanics, and Whites increased from 2000 to 2002 (Figure 17, Table 24). In 2003, the rate among Blacks increased 13.9 percent (from 3.6 in 2002 to 4.1 in 2003). Decreases were seen in rates of Whites and Hispanics (38.5 and 23.1 percent, respectively) between 2002 and 2003.
- Three cases of congenital syphilis were reported in 2003. Two cases of congenital syphilis were reported in 2002 (Table 5).

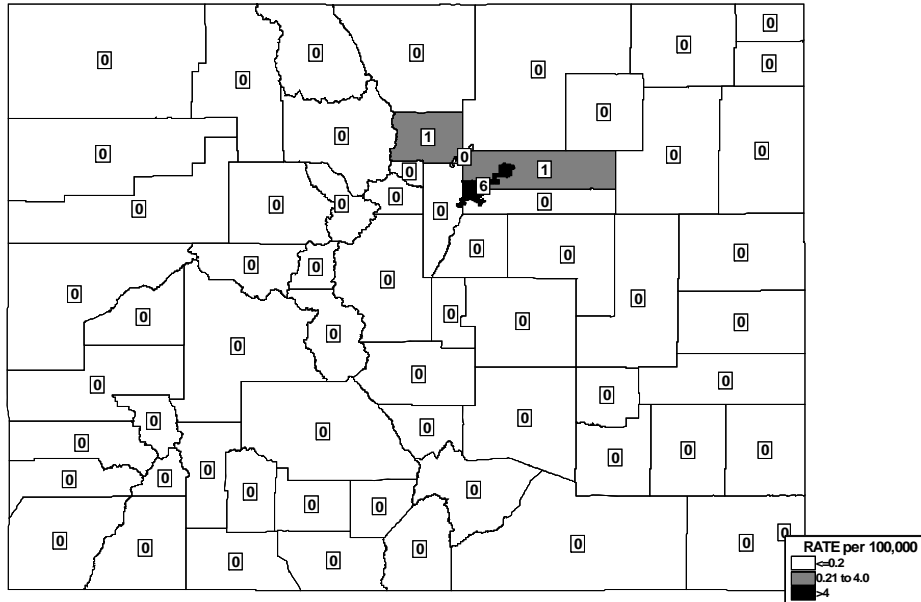
**Figure 12: Syphilis—Reported cases by stage of illness: Colorado, 1990-2003**



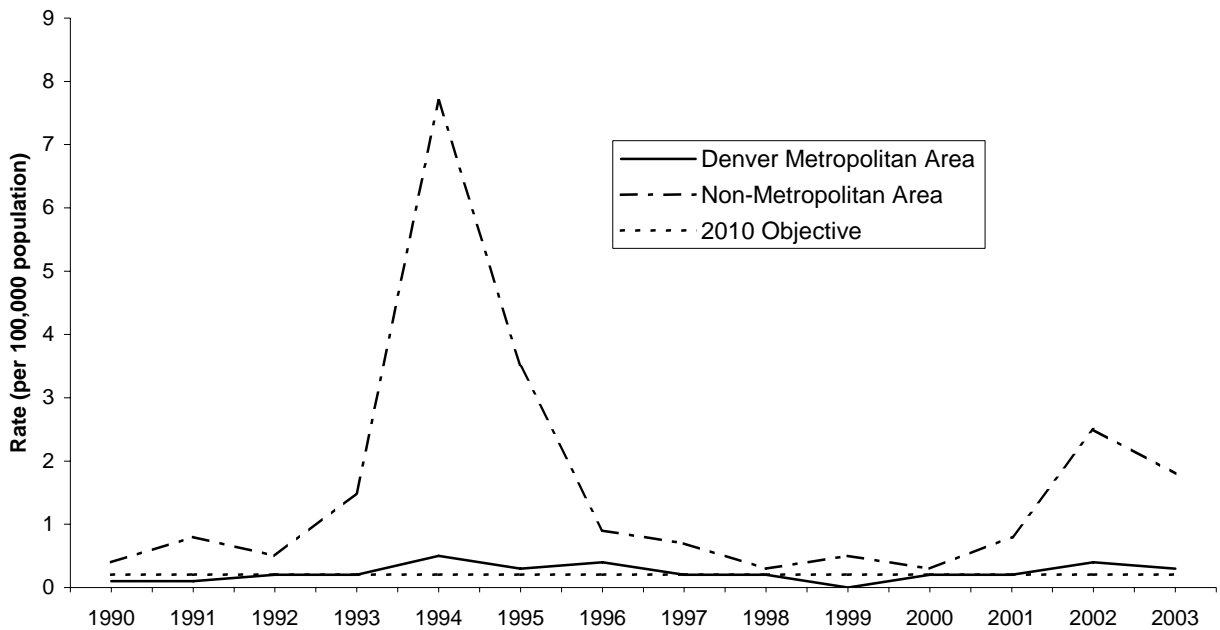
**Figure 13: Primary and secondary syphilis—Reported rates: Colorado, 1990-2003 and the Healthy People Year 2010 objective**



**Figure 14: Primary and secondary syphilis—Rates by county: Colorado, 2003**



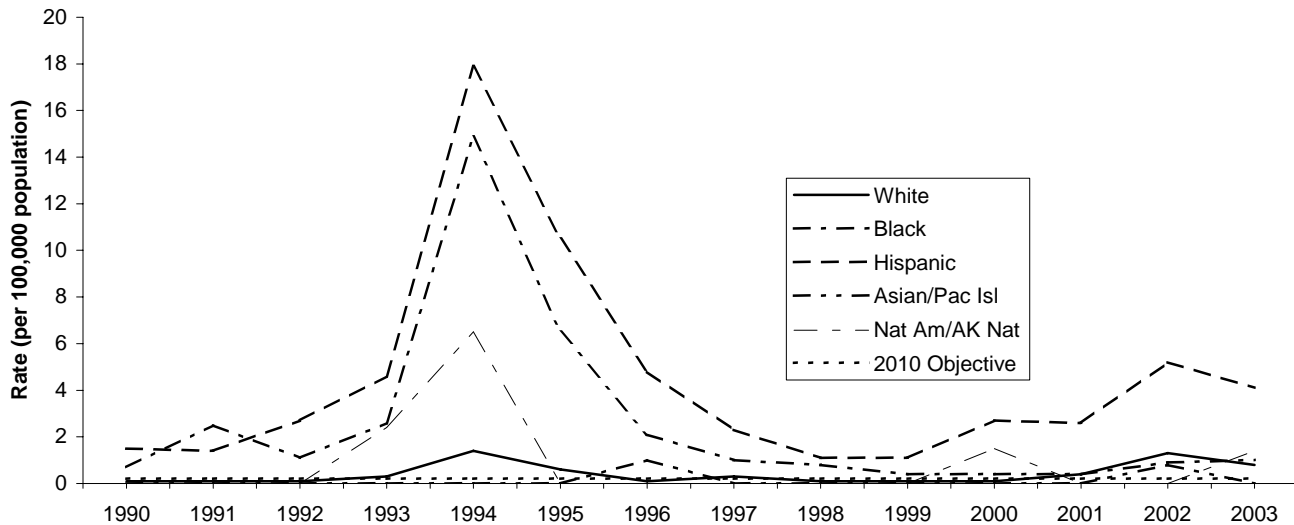
**Figure 15: Primary and secondary syphilis—Rates by region: Colorado, 1990-2003 and the Healthy People Year 2010 objective**



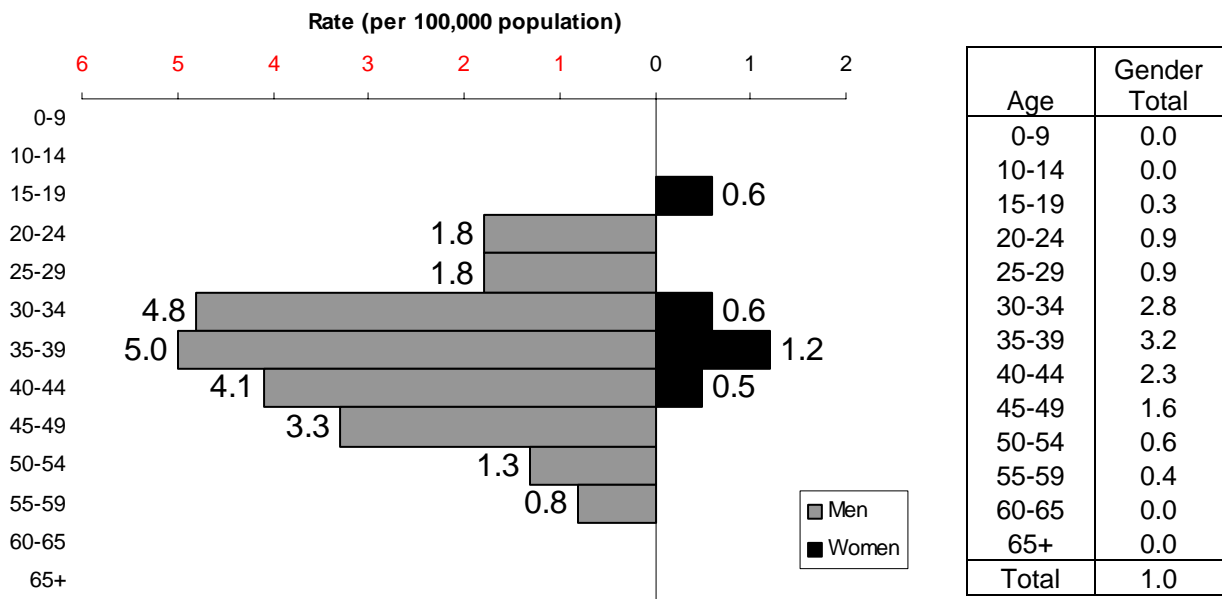
**Figure 16: Primary and secondary syphilis—Rates by gender: Colorado, 1990-2003 and the Healthy People Year 2010 objective**



**Figure 17: Primary and secondary syphilis—Rates by race and ethnicity: Colorado, 1990- 2003**



**Figure 18: Primary and secondary syphilis—Age and gender specific rates: Colorado, 2003**



### III. Special Focus Profiles

#### STDs in Women

##### Observations

- Between 2002 and 2003, the reported case rate of chlamydial infections in women decreased from 450.4 to 428.1 per 100,000 females (Figure 4, Table 8). Chlamydia rates exceeded gonorrhea rates among women in 52 counties (Figure A, Figure B, Table 8, Table 14).
- Gonorrhea rates among women were higher than the overall HP2010 objective of 19.0 cases per 100,000 persons in 29 counties. As in previous years the highest rates of gonorrhea among women in 2003 occurred in the Denver metropolitan area (Table 14).
- Gonorrhea rates for men and women declined steadily from 1992 to 1996 and fluctuated with an overall increase from 1996 to 2003 (Figure 9). The gonorrhea rate for women in 2003 (66.6 cases per 100,000 females) was lower than the 2002 rate of 70.5 cases per 100,000 thousand females (Table 14). The gonorrhea rate among men (56.5 cases per 100,000 males) in 2003 was also higher than the 2002 rate of 79.7 cases per 100,000 males (Table 15).
- The HP2010 objective for P&S syphilis is 0.2 cases per 100,000 persons. P&S syphilis rates for women exceed the HP2010 objective in five counties (Figure C, Table 21).



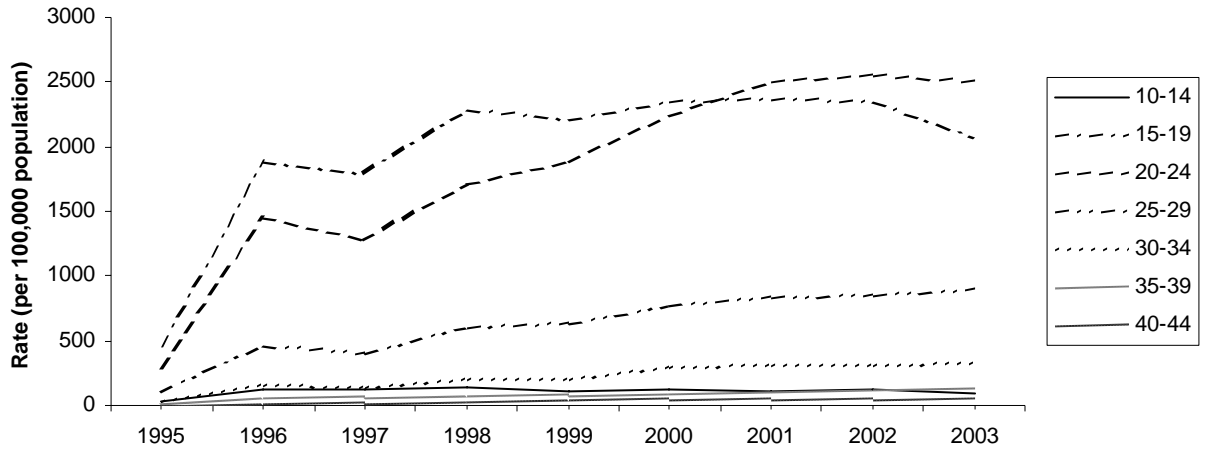




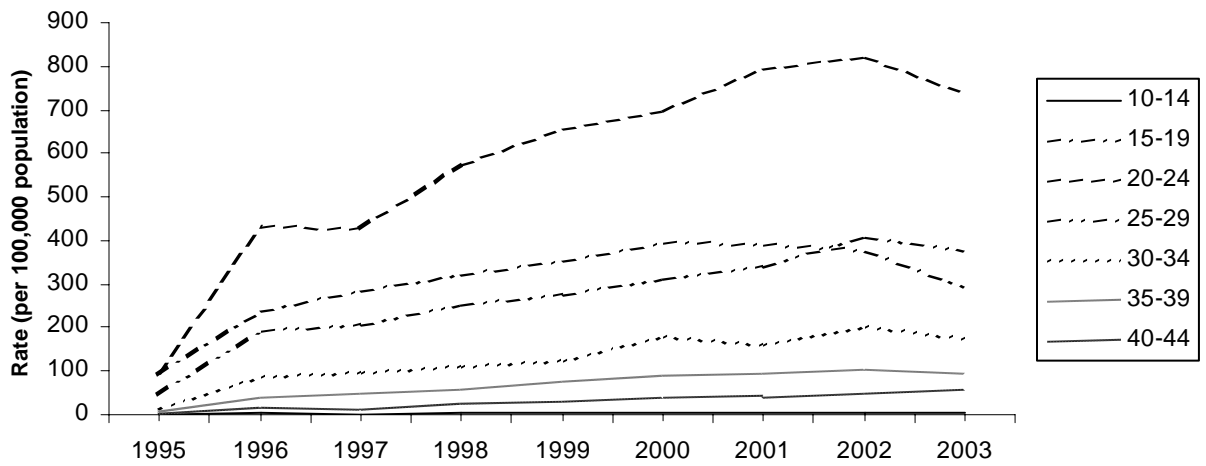
## STDs in Adolescents and Young Adults

- Among women, the 20-24 age group had the highest rate of gonorrhea in 2002 and 2003, compared to all other age categories (Figure F, Figure 11, Table 17). In addition, 20 to 24 year old women had the highest rates of chlamydia in 2003 (Figure D, Figure 5, Table 11). Among men, 20-24 year olds had the highest rate of gonorrhea and the highest rate of chlamydia (Figure E, Figure G, Table 11, Table 17).
- In the 10-14 age group, the gonorrhea rate for young men increased from about 0.6 cases per 100,000 males in 2002 to 2.4 cases per 100,000 males in 2003, a 300.0 percent increase. In the 15-19 age group, the rate declined from 140.6 cases per 100,000 males in 2000 to 92.6 cases per 100,000 males in 2003, a 34.1 percent decrease. Among young adult men in the 20-24 age group, the rate of gonorrhea decreased 29.3 percent between 2002 and 2003 (290.9 and 205.8 cases per 100,000 males, respectively). The rate in this age group in 2002 is 4.8 percent higher than the rate of 196.8 reported in 1998 (Figure G, Table 17).
- In the 10-14 age group, the rate for females decreased 36.2 percent from 26.8 cases per 100,000 females in 2002 to 17.1 cases per 100,000 females in 2003. In women aged 15-19, the 2003 rate of 291.8 cases per 100,000 females was a 21.5 percent decrease from the 2000 rate of 371.6. Among young women in the 20-24 age group, the rate of gonorrhea in 2003 was 345.6, a 1.7 percent decrease from 351.4 in 2002. The rate among 20-24 year olds decreased for the first time since 1998 (Figure F).

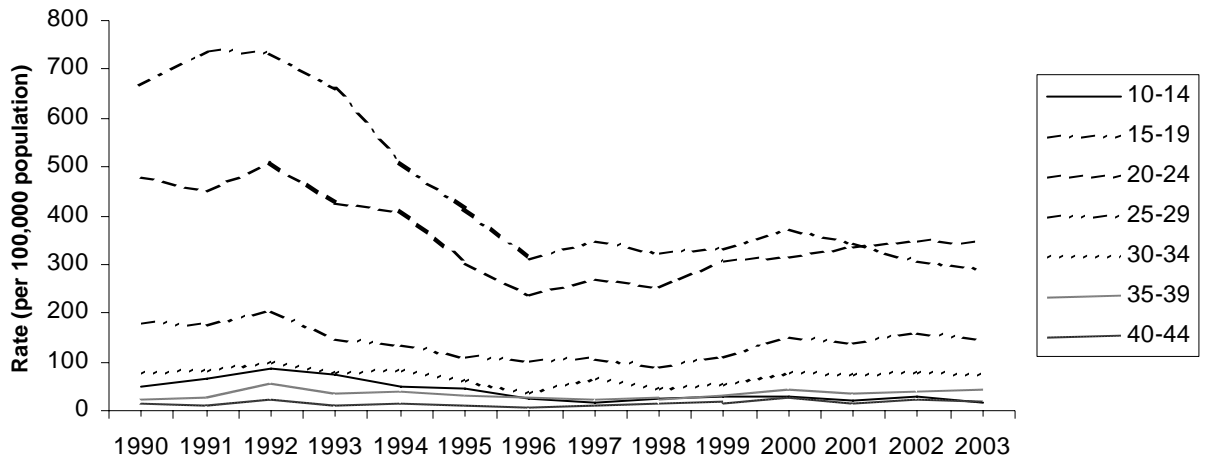
**Figure D: Chlamydia—Age specific rates among women 10-44 years of age: Colorado, 1995-2003**



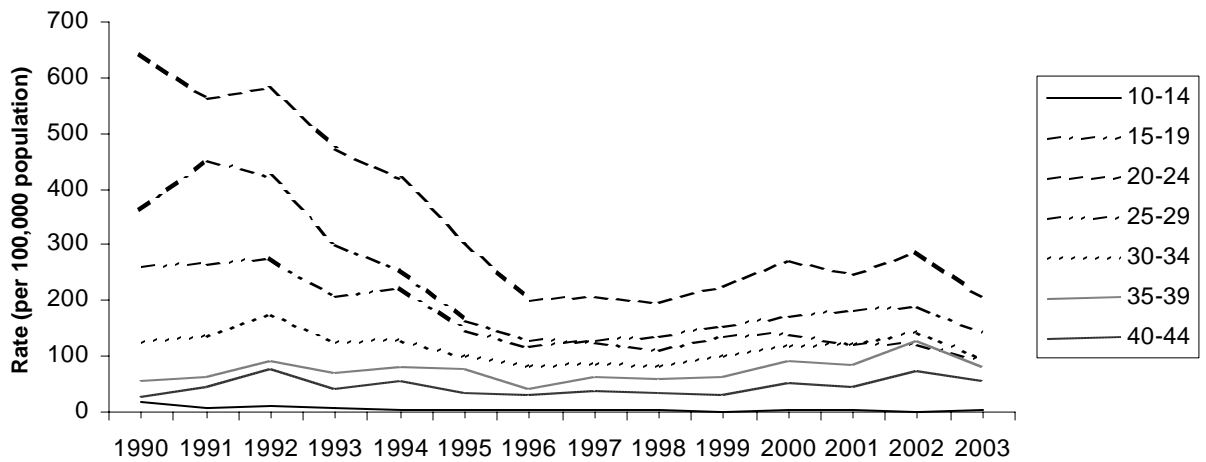
**Figure E: Chlamydia—Age specific rates among men 10-44 years of age: Colorado, 1995-2003**



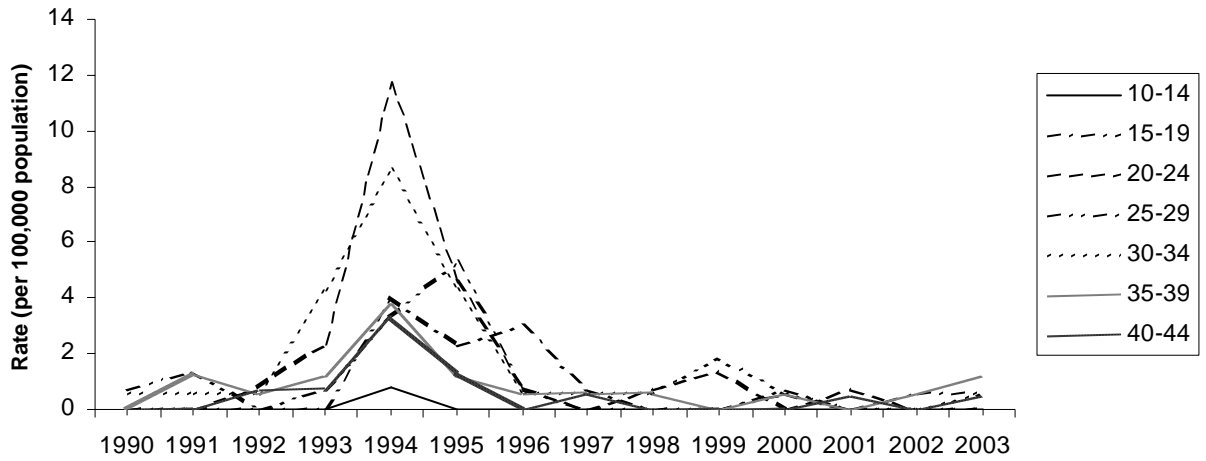
**Figure F: Gonorrhea—Age specific rates among women 10-44 years of age: Colorado, 1990-2003**



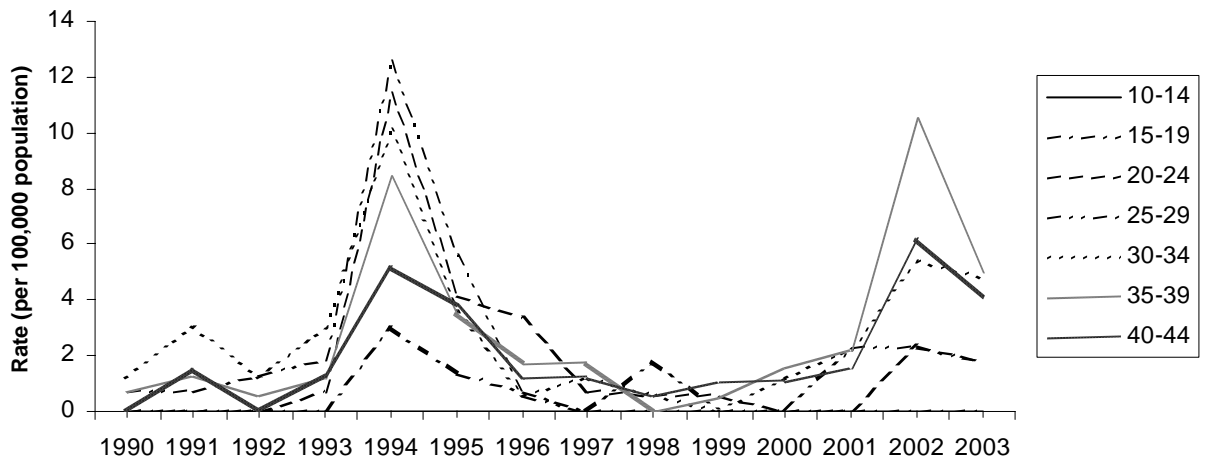
**Figure G: Gonorrhea—Age specific rates among men 10-44 years of age: Colorado, 1990-2003**



**Figure H: Primary and secondary syphilis—Age specific rates among women 10-44 years of age: Colorado, 1990-2003**



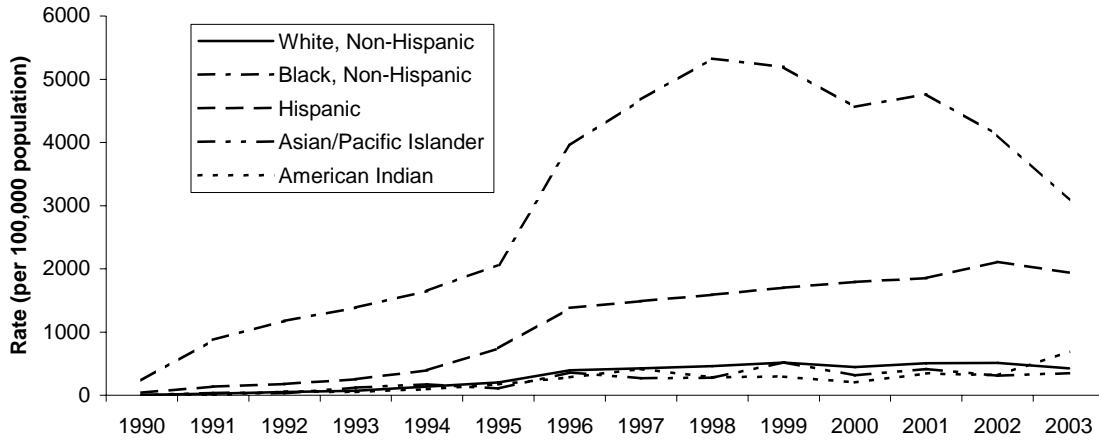
**Figure I: Primary and secondary syphilis—Age specific rates among men 10-44 years of age: Colorado, 1990-2003**



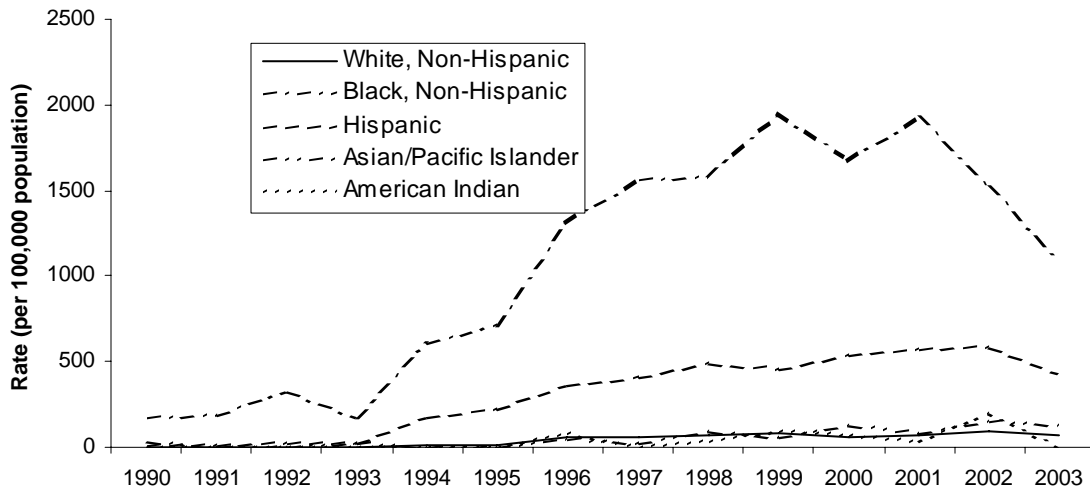
## STDs in Racial and Ethnic Minorities

- In 2003, 36.7 percent of gonorrhea cases reported with race/ethnicity information occurred among Blacks (Table 16). The reported rate of gonorrhea among Blacks in 2003 was 428.1 cases per 100,000 persons. Among Hispanics, the 2003 reported gonorrhea rate was 73.5 cases per 100,000 persons. These rates were 27 and five times higher than the rate reported among Whites in 2002 of 15.6 cases per 100,000 persons (Figure 10, Table 17).
- Gonorrhea rates in 2003 were highest for Blacks aged 15-29 among all racial, ethnic, and age categories. In 2003, Black women age 20–24 years had a gonorrhea rate of 1,927.9 cases per 100,000 females. This rate is 22 times greater than the 2002 rate among White females of similar age (88.4 cases per 100,000 females). Black men in the 20-24 age group had a 2003 gonorrhea rate of 1,442.2 per 100,000 males, which was 25 times higher than the rate among 20-24 year old White males of 58.0. Among 15-19 year olds in 2003, the gonorrhea rate among Blacks was 24 times greater than that among Whites (1,060.6 and 43.6 cases per 100,000 persons, respectively) (Table 17).

**Figure J: Chlamydia—Rates for 15-19 year old females by race and ethnicity: Colorado, 1990-2003**

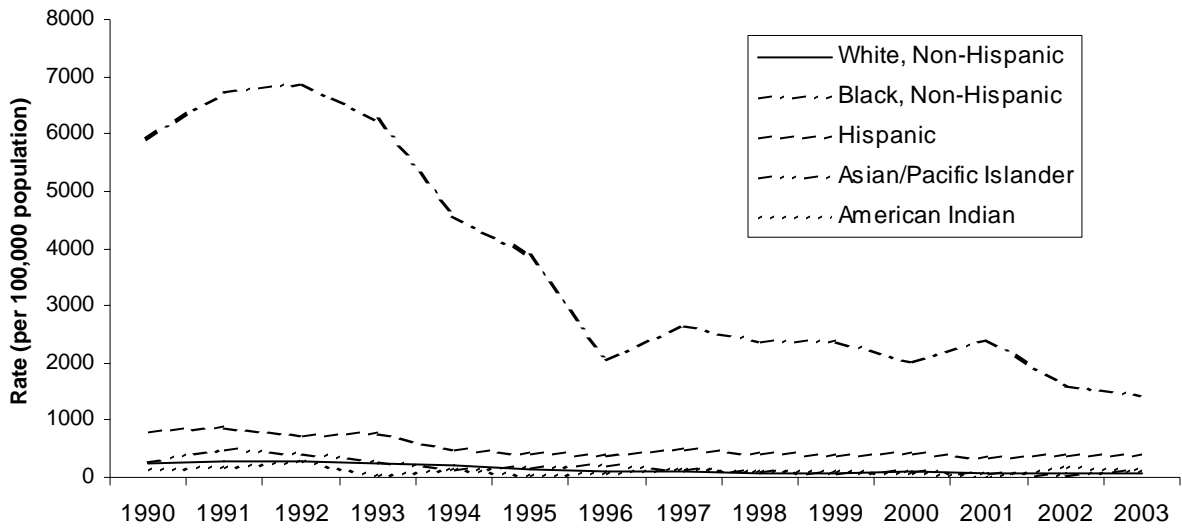


**Figure K: Chlamydia—Rates for 15-19 year old males by race and ethnicity: Colorado, 1990-2003**

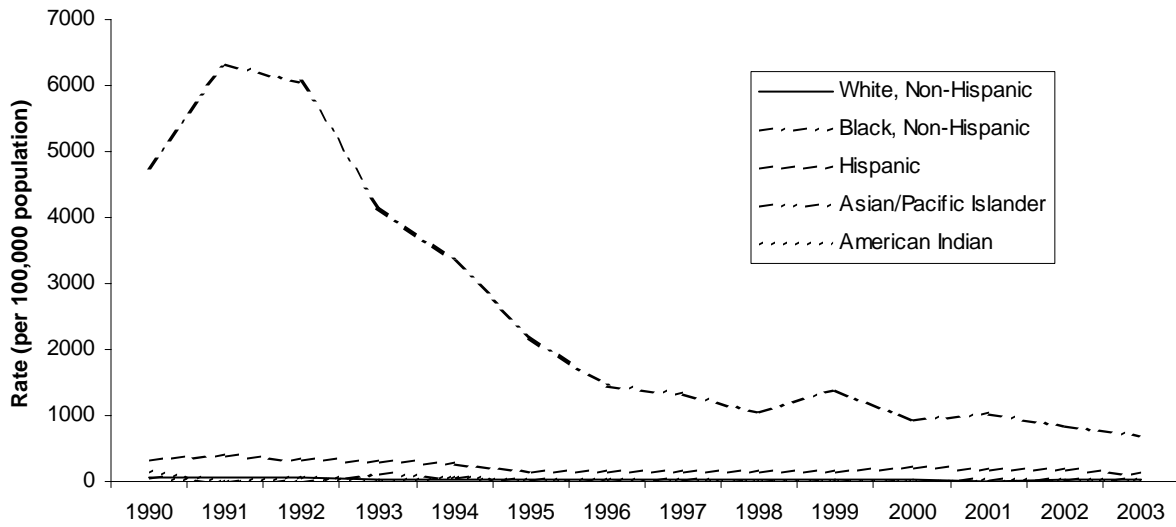




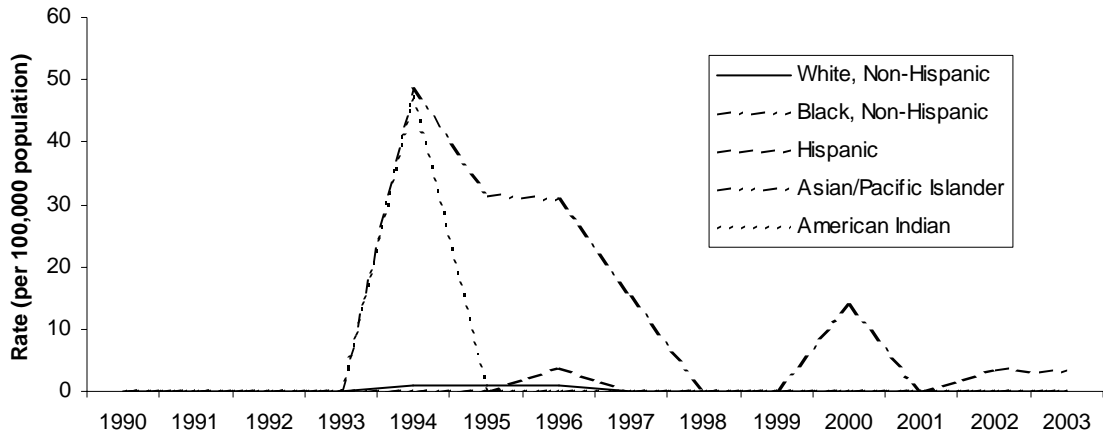
**Figure L: Gonorrhea—Rates for 15-19 year old females by race and ethnicity: Colorado, 1990-2003**



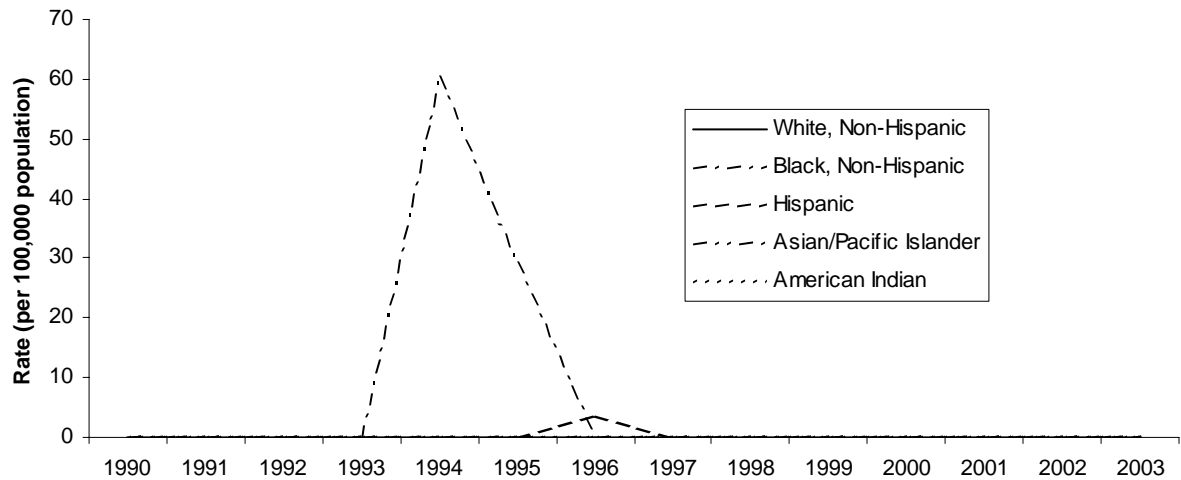
**Figure M: Gonorrhea—Rates for 15-19 year old males by race and ethnicity: Colorado, 1990-2003**



**Figure N: Primary and secondary syphilis—Rates for 15-19 year old females by race and ethnicity: Colorado, 1990-2003**



**Figure O: Primary and secondary syphilis—Rates for 15-19 year old males by race and ethnicity: Colorado, 1990-2003**



## **IV. Tables**

## State Summary Tables

**Table 4: Cases of sexually transmitted diseases and rates per 100,000 population: Colorado, 1990-2003**

Year	<i>Syphilis</i>										<i>Chlamydia*</i>		<i>Gonorrhea</i>	
	<i>All Stages</i>		<i>Primary and Secondary</i>		<i>Early Latent</i>		<i>Late and Late Latent</i>		<i>Congenital</i>					
	<i>Cases</i>	<i>Rate</i>	<i>Cases</i>	<i>Rate</i>	<i>Cases</i>	<i>Rate</i>	<i>Cases</i>	<i>Rate</i>	<i>Cases</i>	<i>Rate</i>	<i>Cases</i>	<i>Rate</i>	<i>Cases</i>	<i>Rate</i>
1990	39	1.2	8	0.2	10	0.3	21	0.6	0	0.0			3853	116.6
1991	54	1.6	15	0.4	15	0.4	24	0.7	0	0.0			4014	118.7
1992	60	1.7	11	0.3	12	0.3	34	1.0	0	0.0			4573	131.0
1993	114	3.2	30	0.8	23	0.6	58	1.6	0	0.0			3680	102.1
1994	344	9.3	149	4.0	56	1.5	134	3.6	3	0.1			3506	94.4
1995	260	6.8	71	1.9	64	1.7	122	3.2	1	0.0			2684	70.4
1996	215	5.5	24	0.6	19	0.5	165	4.2	5	0.1	7676	196.7	2049	52.5
1997	146	3.7	18	0.5	13	0.3	113	2.8	0	0.0	7330	183.4	2318	58.0
1998	123	3	10	0.2	11	0.3	99	2.4	1	0.0	9672	235.8	2221	54.1
1999	93	2.2	11	0.3	6	0.1	73	1.7	2	0.0	10759	255.2	2596	61.6
2000	73	1.7	12	0.3	11	0.3	49	1.1	0	0.0	12224	281.7	3200	73.7
2001	144	3.2	22	0.5	13	0.3	107	2.4	1	0.0	13055	293.7	3076	69.2
2002	175	3.9	64	1.4	22	0.5	84	1.9	2	0.0	13621	301.3	3396	75.1
2003	175	3.8	46	1.0	22	0.5	95	2.1	3	0.1	12900	281.3	2820	61.5

\* Reporting for chlamydia began in 1995

**Table 5: Reported cases of sexually transmitted diseases by gender and reporting source: Colorado, 2003**

Disease	Non-STD Clinic			STD Clinic			Total		
	Male	Female	Total	Male	Female	Total	Male	Female	Total
Total Chlamydia Trachomatis	1743	8942	10685	1411	804	2215	3154	9746	12900
Chlamydia PID	0	21	21	0	48	48	0	69	69
Ophthalmia Neonatorum	1	0	1	4	3	7	5	3	8
Total Gonorrhea	641	1295	1936	664	220	884	1305	1515	2820
Gonorrhea PID	0	13	13	0	47	47	0	60	60
Ophthalmia Neonatorum	0	0	0	1	0	1	1	0	1
Total Syphilis	94	40	134	36	5	41	130	45	175
Primary	9	1	10	5	0	5	14	1	15
Secondary	22	4	26	5	0	5	27	4	31
Early Latent	10	3	13	9	0	9	19	3	22
Late and Late Latent	43	30	73	17	5	22	60	35	95
Neurosyphilis	9	0	9	0	0	0	9	0	9
Congenital	1	2	3	0	0	0	1	2	3

## Chlamydia Tables

**Table 6: Chlamydia—Reported cases and rates by county, ranked by rates: Colorado, 2002**

Rank	County	Cases	Rate per 100,000 Population
1	DENVER	3674	648.9
2	EL PASO	2211	403.8
3	PUEBLO	591	397.4
4	MESA	433	346.2
5	ALAMOSA	53	340.9
6	OTERO	61	308.7
7	ADAMS	1128	293.4
8	LAS ANIMAS	38	233.1
9	KIT CARSON	18	225.5
10	ARAPAHOE	1153	221.5
11	MOFFAT	29	217.2
12	SAN MIGUEL	15	209.1
13	WELD	420	200.1
14	MONTEZUMA	48	195.5
15	BOULDER	546	193.2
16	SUMMIT	52	191.8
17	RIO GRANDE	24	186.2
18	MONTROSE	67	185.5
19	LARIMER	492	185.3
20	PROWERS	25	176.6
21	PITKIN	29	176.5
22	BENT	11	172.0
23	GUNNISON	24	171.6
24	LOGAN	36	164.2
25	MORGAN	46	162.9
26	COSTILLA	6	160.9
27	JEFFERSON	822	155.2
28	LAKE	11	139.2
29	DELTA	40	134.8
30	LA PLATA	63	134.6
31	GARFIELD	62	128.1
32	ARCHULETA	14	125.1
33	HUERFANO	10	124.1
34	ELBERT	27	121.5
35	EAGLE	48	102.3
36	LINCOLN	6	97.5
37	RIO BLANCO	5	82.9
38	CONEJOS	7	82.7
39	FREMONT	36	75.7
40	TELLER	16	72.2
41	BACA	3	69.0
42	CROWLEY	4	68.9

**Table 6: Chlamydia—Reported cases and rates by county, ranked by rates: Colorado, 2003 (continued)**

<b>Rank</b>	<b>County</b>	<b>Cases</b>	<b>Rate per 100,000 Population</b>
43	KIOWA	1	64.8
44	GILPIN	3	61.0
45	DOUGLAS	135	59.8
46	CHAFFEE	9	53.7
47	CHEYENNE	1	45.6
48	PHILLIPS	2	44.0
49	GRAND	6	43.7
50	WASHINGTON	2	39.2
51	ROUTT	8	37.4
52	PARK	5	31.0
53	CUSTER	1	25.7
54	CLEAR CREEK	2	20.7
55	YUMA	2	20.0
56	BROOMFIELD	5	11.5
	<b>Colorado Total</b>	<b>12900</b>	<b>281.3</b>

**Table 7: Chlamydia—Reported cases and rates by county/region listed in alphabetical order: Colorado, 1999-2003**

County	Cases					Rate				
	1999	2000	2001	2002	2003	1999	2000	2001	2002	2003
Adams	800	973	1072	1249	1128	225.2	265.1	283.6	332.7	293.4
Alamosa	75	60	90	82	53	506.0	396.5	588.9	533.3	340.9
Arapahoe	760	936	1179	1172	1153	157.9	190.6	234.0	228.0	221.5
Archuleta	7	3	4	6	14	73.1	29.9	37.9	55.0	125.1
Baca	0	0	2	2	3	0.0	0.0	44.3	45.4	69.0
Bent	3	3	4	6	11	50.0	50.1	68.2	98.8	172.0
Boulder	423	499	609	555	546	149.0	168.3	201.8	197.1	193.2
Broomfield	0	0	0	0	5	0.0	0.0	0.0	0.0	11.5
Chaffee	4	8	8	15	9	25.1	49.1	48.4	89.9	53.7
Cheyenne	1	0	2	2	1	43.8		89.6	90.2	45.6
Clear Creek	4	6	3	2	2	43.5	63.9	31.6	21.0	20.7
Conejos	5	1	2	5	7	60.2	11.9	23.8	59.5	82.7
Costilla	2	2	4	6	6	54.3	54.6	107.4	160.3	160.9
Crowley	1	3	1	2	4	20.0	54.3	18.2	34.4	68.9
Custer	1	3	3	0	1	29.7	84.9	81.2	0.0	25.7
Delta	13	16	25	30	40	47.4	57.1	87.1	102.7	134.8
Denver	2824	4044	4120	4379	3674	517.7	727.6	735.2	780.7	648.9
Dolores	0	0	0	0	0	0.0	0.0	0.0	0.0	0.0
Douglas	69	99	109	131	135	42.5	54.8	54.4	61.3	59.8
Eagle	50	40	38	35	48	125.3	92.3	84.8	76.4	102.3
El Paso	1973	1972	2232	2262	2211	387.8	378.8	418.3	418.1	403.8
Elbert	7	6	7	11	27	36.7	29.7	32.6	50.1	121.5
Fremont	42	56	46	43	36	93.0	120.6	97.4	90.7	75.7
Garfield	114	94	90	91	62	267.0	212.4	194.9	191.8	128.1
Gilpin	0	2	7	1	3	0.0	41.9	144.6	20.4	61.0
Grand	6	12	9	7	6	50.0	93.1	67.9	52.2	43.7
Gunnison	5	10	17	18	24	36.4	71.6	121.4	128.5	171.6
Hinsdale	0	0	0	0	0	0.0	0.0	0.0	0.0	0.0
Huerfano	3	10	9	3	10	38.3	127.1	114.6	37.4	124.1
Jackson	1	1	1	0	0	63.3	63.4	61.5	0.0	0.0
Jefferson	586	652	723	785	822	112.5	123.5	136.1	147.9	155.2
Kiowa	0	0	0	1	1	0.0	0.0	0.0	63.6	64.8
Kit Carson	16	15	9	7	18	202.5	187.2	112.3	87.1	225.5
La Plata	69	59	71	52	63	161.4	132.4	155.6	112.4	134.6
Lake	16	13	16	14	11	204.5	164.4	203.1	177.1	139.2
Larimer	298	365	389	438	492	121.1	144.2	149.8	166.7	185.3
Las Animas	26	34	21	17	38	171.7	222.5	135.0	107.4	233.1
Lincoln	2	5	4	3	6	32.8	81.1	65.4	49.0	97.5
Logan	24	40	35	40	36	118.3	191.7	159.6	182.5	164.2
Mesa	316	270	279	239	433	275.8	229.5	232.6	195.2	346.2



**Table 7: Chlamydia—Reported cases and rates by county/region listed in alphabetical order: Colorado, 1999-2003 (continued)**

County	Cases					Rate				
	1999	2000	2001	2002	2003	1999	2000	2001	2002	2003
Mineral	0	0	0	0	0	0.0	0.0	0.0	0.0	0.0
Moffat	18	20	20	19	29	138.2	151.7	151.7	143.0	217.2
Montezuma	62	47	58	57	48	263.6	197.0	241.6	235.4	195.5
Montrose	29	57	48	83	67	88.6	169.3	138.7	234.2	185.5
Morgan	46	45	44	55	46	170.7	165.1	159.3	197.4	162.9
Otero	81	92	56	41	61	397.0	454.3	280.4	207.9	308.7
Ouray	1	0	0	1	0	27.6	0.0	0.0	25.1	0.0
Park	1	5	6	6	5	7.2	34.0	39.2	38.1	31.0
Phillips	1	2	2	5	2	22.1	44.6	44.3	110.3	44.0
Pitkin	22	31	15	11	29	148.3	194.8	92.6	67.7	176.5
Prowers	36	48	39	28	25	250.5	332.5	273.8	197.5	176.6
Pueblo	477	578	538	631	591	341.4	406.9	372.6	429.1	397.4
Rio Blanco	6	4	6	7	5	98.4	66.8	100.4	115.5	82.9
Rio Grande	26	23	31	35	24	211.6	185.0	247.6	278.7	186.2
Routt	12	15	20	18	8	62.4	74.6	97.3	86.0	37.4
Saguache	0	0	0	0	0	0.0	0.0	0.0	0.0	0.0
San Juan	0	1	1	0	0	0.0	179.2	178.6	0.0	0.0
San Miguel	3	5	8	10	15	45.9	75.0	115.0	140.2	209.1
Sedgwick	2	1	1	0	0	73.7	36.4	36.8	0.0	0.0
Summit	44	42	38	28	52	195.0	163.3	144.2	104.5	191.8
Teller	12	10	14	26	16	59.5	47.3	64.1	118.2	72.2
Unknown	929	435	436	346	314	0.0	0.0	0.0	0.0	0.0
Washington	2	1	0	5	2	39.8	20.3	0.0	98.7	39.2
Weld	394	442	426	496	420	222.3	240.8	219.2	245.2	200.1
Yuma	9	8	8	2	2	91.6	81.2	80.8	20.2	20.0
Colorado Total	10759	12224	13055	13621	12900	255.2	281.7	293.7	301.3	281.3
Non-Denver Metro	5720	5520	5852	5905	5988	266.0	249.0	257.6	253.8	253.9
Denver Metro	5039	6704	7203	7716	6912	244.0	315.8	331.3	351.6	310.5

**Table 8: Chlamydia—Women – Reported cases and rates by county/region listed in alphabetical order: Colorado, 1999-2003**

County	Cases					Rate				
	1999	2000	2001	2002	2003	1999	2000	2001	2002	2003
Adams	645	750	857	1001	917	367.6	414.8	459.8	540.9	483.6
Alamosa	66	55	78	70	47	884.6	723.8	1017.0	908.5	604.2
Arapahoe	566	668	868	859	869	231.6	268.2	339.5	329.5	329.3
Archuleta	7	3	3	6	13	148.3	60.7	57.6	111.1	234.0
Baca	0	0	2	2	3	0.0	0.0	88.3	90.6	137.5
Bent	3	2	4	5	10	113.7	76.5	156.3	189.2	357.4
Boulder	342	396	516	440	430	243.5	270.2	345.5	315.9	307.7
Broomfield	0	0	0	0	4	0.0	0.0	0.0	0.0	18.4
Chaffee	3	5	4	10	6	40.2	65.5	51.4	127.1	75.9
Cheyenne	1	0	0	1	1	88.3	0.0	0.0	90.5	91.4
Clear Creek	3	5	3	0	1	68.2	111.3	66.0	0.0	21.5
Conejos	5	1	2	5	7	119.5	23.6	47.2	117.9	164.2
Costilla	2	2	4	6	5	108.4	109.1	213.8	320.0	267.4
Crowley	1	3	1	1	4	60.3	166.3	53.4	50.7	202.1
Custer	1	3	3	0	1	60.8	173.2	165.5	0.0	52.1
Delta	10	13	25	25	39	73.2	93.2	174.7	171.6	263.4
Denver	1982	2933	2939	3047	2598	732.2	1068.0	1062.0	1101.0	930.5
Dolores	0	0	0	0	0	0.0	0.0	0.0	0.0	0.0
Douglas	44	65	71	87	89	54.1	71.8	70.7	81.2	78.6
Eagle	38	29	27	27	38	209.8	148.0	132.3	129.0	176.7
El Paso	1261	1299	1491	1511	1494	497.8	501.3	561.2	560.7	548.2
Elbert	5	5	7	10	23	52.5	49.7	65.4	91.2	206.8
Fremont	36	49	45	33	29	184.9	247.6	222.2	161.6	141.5
Garfield	98	82	77	83	51	471.6	380.9	342.5	358.8	216.0
Gilpin		2	7	1	2	0.0	89.1	305.8	43.2	85.7
Grand	4	12	8	3	6	70.9	198.2	127.9	47.2	92.1
Gunnison	4	9	14	17	21	63.4	140.8	217.7	263.8	325.7
Hinsdale	0	0	0	0	0	0.0	0.0	0.0	0.0	0.0
Huerfano	3	7	6	1	8	83.1	195.3	167.2	27.2	216.2
Jackson	1	1	1	0	0	127.4	127.6	124.1	0.0	0.0
Jefferson	451	490	567	602	660	172.2	184.7	212.3	225.5	248.0
Kiowa	0	0	0	1	1	0.0	0.0	0.0	127.6	129.7
Kit Carson	16	13	8	7	13	427.4	344.8	212.3	185.3	346.9
La Plata	58	55	62	47	54	276.0	251.4	276.2	206.1	234.1
Lake	11	11	15	13	11	302.6	300.5	411.0	354.1	299.8
Larimer	246	298	305	341	375	199.6	235.3	234.7	259.4	282.4
Las Animas	25	34	19	11	32	323.2	435.7	240.0	136.2	385.2
Lincoln	1	5	2	3	5	37.4	188.3	81.8	122.1	201.8
Logan	22	37	33	37	33	228.4	376.8	319.6	357.4	318.4
Mesa	264	225	236	197	337	451.3	374.9	385.6	315.4	528.8
Mineral	0	0	0	0	0	0.0	0.0	0.0	0.0	0.0
Moffat	14	16	18	19	28	222.8	252.2	282.8	296.8	434.4

**Table 8: Chlamydia—Women – Reported cases and rates by county/region listed in alphabetical order: Colorado, 1999-2003 (continued)**

County	Cases					Rate				
	1999	2000	2001	2002	2003	1999	2000	2001	2002	2003
Montezuma	53	42	52	46	44	443.0	346.2	426.3	373.9	353.0
Montrose	27	47	41	66	61	162.3	275.0	233.3	366.8	332.8
Morgan	41	38	40	48	38	304.2	279.6	290.3	345.5	269.9
Otero	74	78	52	38	59	708.3	753.5	510.3	377.5	585.2
Ouray	1	0	0	1	0	55.7	0.0	0.0	50.6	0.0
Park	0	2	4	4	4	0.0	28.2	53.9	52.3	51.0
Phillips	1	2	1	3	2	42.8	86.4	42.8	128.5	85.6
Pitkin	16	18	12	7	18	231.7	243.3	159.3	92.4	234.6
Prowers	30	43	38	28	22	418.6	599.2	537.0	398.5	313.4
Pueblo	387	485	417	513	501	542.0	668.9	566.2	684.5	661.7
Rio Blanco	5	3	6	6	5	165.7	101.3	202.7	199.6	166.9
Rio Grande	20	20	24	28	23	321.0	317.2	378.1	439.0	351.4
Routt	10	14	16	15	5	112.6	150.9	168.0	154.1	50.2
Saguache	0	0	0	0	0	0.0	0.0	0.0	0.0	0.0
San Juan	0	0	1	0	0	0.0	0.0	373.1	0.0	0.0
San Miguel	3	4	8	8	11	101.1	132.7	253.1	245.6	334.3
Sedgwick	2	0	0	0	0	146.8	0.0	0.0	0.0	0.0
Summit	37	27	34	21	46	389.3	251.4	305.5	184.3	397.1
Teller	8	6	13	21	10	80.3	57.5	120.5	192.8	91.1
Unknown	810	385	362	307	274	0.0	0.0	0.0	0.0	0.0
Washington	2	1	0	4	1	80.8	41.3	0.0	160.6	39.8
Weld	319	366	335	416	355	360.5	400.0	345.8	412.2	339.2
Yuma	7	6	7	2	2	140.2	119.8	139.4	39.8	39.3
Colorado Total	8092	9170	9791	10111	9746	386.1	425.9	443.7	450.4	428.1
Non-Denver Metro	4404	4264	4489	4515	4613	414.7	390.2	400.6	393.2	396.2
Denver Metro	3688	4906	5302	5596	5133	356.8	462.6	488.1	510.3	461.6

**Table 9: Chlamydia—Men – Reported cases and rates by county/region listed in alphabetical order: Colorado, 1999-2003**

County	Cases					Rate				
	1999	2000	2001	2002	2003	1999	2000	2001	2002	2003
Adams	155	223	214	247	211	86.2	119.8	111.6	129.8	108.3
Alamosa	9	5	12	12	6	122.2	66.4	157.6	156.4	77.2
Arapahoe	193	268	310	313	284	81.4	110.7	124.9	123.6	110.7
Archuleta	0	0	1	0	1	0.0	0.0	18.8	0.0	17.7
Baca	0	0	0	0	0	0.0	0.0	0.0	0.0	0.0
Bent	0	1	0	1	1	0.0	29.6	0.0	29.2	27.8
Boulder	81	103	88	115	116	56.5	68.7	57.7	80.8	81.2
Broomfield	0	0	0	0	1	0.0	0.0	0.0	0.0	4.6
Chaffee	1	3	4	5	3	11.8	34.6	45.7	56.7	33.9
Cheyenne	0	0	2	1	0	0.0	0.0	178.6	89.9	0.0
Clear Creek	1	1	0	2	1	20.9	20.4	0.0	40.4	20.0
Conejos	0	0	0	0	0	0.0	0.0	0.0	0.0	0.0
Costilla	0	0	0	0	1	0.0	0.0	0.0	0.0	53.8
Crowley	0	0	0	1	0	0.0	0.0	0.0	26.0	0.0
Custer	0	0	0	0	0	0.0	0.0	0.0	0.0	0.0
Delta	3	3	0	5	1	21.8	21.3	0.0	34.2	6.7
Denver	840	1111	1176	1330	1076	305.6	395.3	414.5	468.0	375.0
Dolores	0	0	0	0	0	0.0	0.0	0.0	0.0	0.0
Douglas	25	34	38	44	46	30.8	37.7	38.0	41.4	40.9
Eagle	12	11	11	8	10	55.1	46.3	45.1	32.1	39.3
El Paso	712	673	738	751	717	278.7	257.4	275.5	276.5	260.7
Elbert	2	1	0	1	4	20.9	9.9	0.0	9.1	36.0
Fremont	6	7	1	10	7	23.4	26.3	3.7	37.0	25.9
Garfield	16	12	13	8	11	73.0	52.8	54.9	32.9	44.4
Gilpin	0	0	0	0	1	0.0	0.0	0.0	0.0	38.7
Grand	2	0	1	4	0	31.5	0.0	14.3	56.6	0.0
Gunnison	1	1	3	1	3	13.5	13.2	39.6	13.2	39.8
Hinsdale	0	0	0	0	0	0.0	0.0	0.0	0.0	0.0
Huerfano	0	3	3	2	2	0.0	70.1	70.3	46.0	45.9
Jackson	0	0	0	0	0	0.0	0.0	0.0	0.0	0.0
Jefferson	135	162	156	183	162	52.1	61.7	59.0	69.3	61.5
Kiowa	0	0	0	0	0	0.0	0.0	0.0	0.0	0.0
Kit Carson	0	2	1	0	5	0.0	47.1	23.6	0.0	118.1
La Plata	11	4	9	5	9	50.6	17.6	38.8	21.3	37.9
Lake	5	2	1	1	0	119.5	47.1	23.7	23.6	0.0
Larimer	52	67	84	97	117	42.3	53.0	64.7	73.9	88.2
Las Animas	1	0	2	6	6	13.5	0.0	26.2	77.3	75.1
Lincoln	1	0	1	0	1	29.3	0.0	27.2	0.0	27.2
Logan	2	3	2	3	3	18.8	27.2	17.2	25.9	26.0
Mesa	52	44	43	42	96	92.7	76.3	73.2	70.0	156.5
Mineral	0	0	0	0	0	0.0	0.0	0.0	0.0	0.0

**Table 9: Chlamydia—Men – Reported cases and rates by county/region listed in alphabetical order: Colorado, 1999-2003 (continued)**

County	Cases					Rate				
	1999	2000	2001	2002	2003	1999	2000	2001	2002	2003
Moffat	4	4	2	0	1	59.3	58.5	29.3	0.0	14.5
Montezuma	9	5	6	11	4	77.9	42.6	50.8	92.3	33.1
Montrose	2	10	7	17	6	12.4	60.3	41.1	97.5	33.7
Morgan	5	7	4	7	8	37.1	51.2	28.9	50.1	56.5
Otero	7	14	4	3	2	70.3	141.4	40.9	31.1	20.7
Ouray	0	0	0	0	0	0.0	0.0	0.0	0.0	0.0
Park	1	3	2	2	1	13.9	39.4	25.3	24.7	12.1
Phillips	0	0	1	2	0	0.0	0.0	45.9	91.0	0.0
Pitkin	6	13	3	4	11	75.7	152.6	34.7	46.1	125.7
Prowers	6	5	1	0	3	83.3	68.9	13.9	0.0	42.0
Pueblo	90	93	121	118	90	131.7	133.7	171.1	163.6	123.3
Rio Blanco	1	1	0	1	0	32.5	33.1	0.0	32.8	0.0
Rio Grande	6	3	7	7	1	99.0	49.0	113.4	113.3	15.8
Routt	2	1	4	3	3	19.3	9.2	36.3	26.8	26.3
Saguache	0	0	0	0	0	0.0	0.0	0.0	0.0	0.0
San Juan	0	1	0	0	0	0.0	341.3	0.0	0.0	0.0
San Miguel	0	1	0	2	4	0.0	27.4	0.0	51.6	103.0
Sedgwick	0	1	1	0	0	0.0	72.8	73.6	0.0	0.0
Summit	7	15	4	7	6	53.6	100.1	26.3	45.4	38.6
Teller	4	4	1	5	6	39.1	37.3	9.1	45.0	53.7
Unknown	119	50	73	39	40	0.0	0.0	0.0	0.0	0.0
Washington	0	0	0	1	1	0.0	0.0	0.0	38.8	38.7
Weld	75	76	91	80	65	84.5	82.5	93.4	78.9	61.8
Yuma	2	2	1	0	0	41.5	41.3	20.5	0.0	0.0
Colorado Total	2664	3053	3247	3507	3154	125.6	139.6	145.0	154.1	136.6
Non-Denver Metro	1316	1255	1353	1390	1375	120.9	111.6	117.6	118.0	115.1
Denver Metro	1348	1798	1894	2117	1779	130.7	169.3	174.1	192.8	159.7

**Table 10: Chlamydia—Reported cases by age, gender, and race/ethnicity: Colorado, 1999-2003**

Age Group	Total			White, Non-Hispanic			Black, Non-Hispanic			Hispanic			Asian/Pacific Islander			American Indian		
	Total	Male	Female	Total	Male	Female	Total	Male	Female	Total	Male	Female	Total	Male	Female	Total	Male	Female
0-9	20	11	9	2	1	1	1	1	0	3	3	0	0	0	0	0	0	0
10-14	160	4	156	22	2	20	15	0	15	41	1	40	0	0	0	0	0	0
15-19	3742	556	3184	604	84	520	515	149	366	641	150	491	27	3	24	12	3	9
20-24	3722	1045	2677	724	232	492	634	319	315	623	224	399	22	8	14	25	7	18
25-29	1474	475	998	244	89	155	252	143	109	235	95	140	14	4	10	10	3	7
30-34	544	217	327	81	37	44	93	65	28	88	38	50	6	0	6	7	1	6
35-39	275	142	133	48	33	15	47	40	7	33	15	18	6	0	6	2	1	1
40-44	129	59	70	26	15	11	27	19	8	11	4	7	3	1	2	0	0	0
45-49	38	24	14	9	7	2	13	11	2	3	1	2	0	0	0	0	0	0
50-54	28	19	9	7	6	1	3	3	0	8	4	4	0	0	0	0	0	0
55-59	8	6	2	3	2	1	2	2	0	1	1	0	0	0	0	0	0	0
60-65	12	9	3	3	3	0	2	2	0	*	*	*	0	0	0	0	0	0
65+	11	6	5	0	0	0	1	1	0	1	1	0	0	0	0	0	0	0
TOTAL	10759	2664	8092	1785	511	1274	1610	755	855	1695	541	1154	79	16	63	56	15	41
0-9	43	13	30	1	0	1	1	1	0	3	0	3	0	0	0	0	0	0
10-14	200	10	190	14	1	13	12	0	12	41	2	39	0	0	0	0	0	0
15-19	4139	640	3498	530	67	463	457	129	328	706	182	524	21	6	15	8	2	6
20-24	4382	1145	3237	716	246	470	624	317	307	768	272	496	37	10	27	19	4	15
25-29	1765	556	1209	256	95	161	251	151	100	301	122	179	25	10	15	7	1	6
30-34	783	308	475	105	45	60	116	80	36	143	70	73	7	4	3	3	2	1
35-39	356	176	180	56	37	19	71	55	16	48	24	24	3	1	2	1	0	1
40-44	166	81	85	36	22	14	18	17	1	15	7	8	1	0	1	1	0	1
45-49	81	50	31	14	10	4	17	12	5	7	2	5	1	1	0	0	0	0
50-54	32	21	11	5	5	0	7	5	2	4	2	2	1	1	0	1	1	0
55-59	19	9	10	3	3	0	2	2	0	0	0	0	0	0	0	0	0	0
60-65	6	3	3	1	1	0	1	1	0	*	*	*	0	0	0	0	0	0
65+	10	3	7	0	0	0	1	1	0	*	*	*	0	0	0	0	0	0
TOTAL	12224	3053	9170	1738	532	1206	1580	772	808	2040	686	1354	97	33	64	40	10	30
0-9	33	10	23	4	0	4	2	0	2	2	1	1	0	0	0	0	0	0
10-14	190	11	179	17	0	17	23	5	18	30	3	27	0	0	0	0	0	0
15-19	4354	656	3698	658	87	571	512	152	360	728	189	539	24	4	20	11	1	10
20-24	4935	1300	3633	945	312	633	702	300	402	876	341	535	24	9	15	8	0	8
25-29	1895	596	1298	263	118	145	288	161	127	350	143	207	21	2	19	11	1	10
30-34	798	293	502	128	57	71	123	76	47	118	54	64	8	5	3	1	0	1
35-39	377	181	196	59	32	27	78	56	22	73	38	35	4	1	3	0	0	0
40-44	157	83	74	25	13	12	35	28	7	20	11	9	0	0	0	1	0	1
45-49	70	42	28	8	5	3	17	17	0	5	3	2	1	1	0	0	0	0
50-54	36	25	11	9	7	2	7	6	1	6	3	3	0	0	0	0	0	0
55-59	12	5	7	2	0	2	4	3	1	1	0	1	0	0	0	0	0	0
60-65	6	4	2	2	2	0	0	0	0	0	0	0	0	0	0	0	0	0
65+	11	6	5	1	0	1	1	1	0	0	0	0	0	0	0	0	0	0
TOTAL	13055	3247	9791	2121	633	1488	1795	806	989	2211	786	1425	83	23	60	32	2	30
0-9	36	15	21	0	0	0	1	1	0	7	4	3	0	0	0	0	0	0
10-14	208	9	199	15	0	15	13	0	13	45	1	44	0	0	0	0	0	0
15-19	4450	655	3794	717	113	604	445	123	322	810	192	618	23	7	15	15	6	9
20-24	5091	1353	3737	1017	318	699	673	275	398	1010	391	619	33	12	21	22	7	15
25-29	2024	702	1321	312	153	159	303	169	134	442	187	255	21	10	11	14	0	14
30-34	909	377	532	133	76	57	158	101	57	160	82	78	14	6	8	4	2	2
35-39	392	188	204	60	37	23	67	55	12	73	33	40	3	1	2	1	1	0
40-44	196	94	102	29	19	10	37	27	10	33	17	16	2	0	2	3	1	2
45-49	78	42	36	16	12	4	13	11	2	11	5	6	1	1	0	0	0	0
50-54	49	30	19	19	15	4	6	5	1	3	1	2	0	0	0	0	0	0
55-59	12	9	3	6	6	0	2	2	0	1	0	1	0	0	0	0	0	0
60-65	7	4	3	1	1	0	0	0	0	0	0	0	1	0	1	0	0	0
65+	8	3	5	1	1	0	0	0	0	1	1	0	0	0	0	0	0	0
TOTAL	13621	3507	10111	2333	753	1580	1720	770	950	2604	916	1688	99	38	60	60	17	43
0-9	26	8	18	2	2	0	0	0	0	8	2	6	0	0	0	0	0	0
10-14	163	9	154	26	2	24	19	1	18	26	3	23	0	0	0	1	0	1
15-19	3941	517	3424	590	88	502	340	91	249	729	141	588	23	6	17	20	0	20
20-24	4998	1246	3752	892	283	609	542	231	311	947	310	637	31	11	20	21	2	19
25-29	2024	638	1386	305	117	188	227	114	113	422	165	257	23	5	18	11	1	10
30-34	878	331	547	108	58	50	119	76	43	178	74	104	10	5	5	7	1	6
35-39	381	176	205	59	36	23	63	49	14	54	26	28	4	1	3	3	2	1
40-44	211	114	97	39	28	11	37	32	5	39	15	24	1	1	0	0	0	0
45-49	87	51	36	19	14	5	17	16	1	15	10	5	0	0	0	0	0	0
50-54	31	18	13	13	8	5	4	4	0	4	1	3	0	0	0	0	0	0
55-59	14	7	7	5	4	1	0	0	0	2	1	1	0	0	0	0	0	0
60-65	4	4	0	1	1	0	1	1	0	1	1	0	0	0	0	0	0	0
65+	9	4	5	1	1	0	0	0	0	0	0	0	0	0	0	0	0	0
TOTAL	12900	3154	9746	2064	642	1422	1373	618	755	2432	749	1683	92	29	63	63	6	57

Note: Totals include cases with missing race, gender, and/or age so they may not sum to rows and columns.

\* Data may violate policy on release of disease surveillance data. See section entitled *Sources and Limitations of the Data*.

**Table 11: Chlamydia—Reported rates by age, gender, and race/ethnicity: Colorado, 1999-2003**

Age Group	Total			White, Non-Hispanic			Black, Non-Hispanic			Hispanic			Asian/Pacific Islander			American Indian		
	Total	Male	Female	Total	Male	Female	Total	Male	Female	Total	Male	Female	Total	Male	Female	Total	Male	Female
0-9	3.3	3.6	3.1	0.5	1.0	1.1	3.0	0.0	6.3	2.1	1.4	6.0	0.0	0.0	0.0	0	0	0
10-14	52.6	2.6	105.5	10.4	0.9	23.0	93.1	0.0	210.6	67.0	6.7	87.8	0.0	0.0	0.0	0	0	0
15-19	1246.1	355.8	2210.6	290.0	65.4	463.0	3507.7	1579.2	5328.5	1037.0	486.0	1589.3	290.9	90.0	275.5	193.2	0	0
20-24	1237.8	655.8	1893.9	358.3	173.4	387.3	4408.9	3608.7	3956.4	916.4	604.7	1056.8	217.1	102.3	384.0	409.4	0	0
25-29	448.5	274.4	641.7	106.8	61.0	113.5	1658.3	1778.5	1240.0	352.8	210.8	402.3	112.5	16.8	88.4	167.2	0	0
30-34	163.8	126.0	204.5	33.4	35.1	32.4	603.5	746.6	395.1	153.1	105.1	115.1	54.0	19.6	74.0	125.3	0	0
35-39	76.1	77.6	74.7	17.3	15.2	12.4	287.5	413.4	110.2	63.1	84.3	38.5	60.0	22.4	40.3	35.5	0	0
40-44	35.7	32.4	39.0	9.0	5.7	5.0	181.5	184.4	15.5	25.1	28.1	49.9	33.7	0.0	21.6	0	0	0
45-49	11.8	14.9	8.7	3.4	8.8	1.6	110.4	51.2	0.0	8.6	24.0	25.3	0.0	0.0	0.0	0	0	0
50-54	10.5	14.1	6.8	3.1	1.9	4.8	35.4	47.7	0.0	29.0	15.2	0.0	0.0	0.0	0.0	0	0	0
55-59	4.2	6.4	2.1	1.9	0.0	0.0	33.0	0.0	0.0	5.3	0.0	11.0	0.0	0.0	0.0	0	0	0
60-65	8.4	12.9	4.1	2.5	0.0	0.0	42.2	0.0	0.0	*	*	*	0.0	0.0	0.0	0	0	0
65+	2.7	3.5	2.1	0.0	0.7	0.5	9.6	0.0	0.0	3.0	7.2	0.0	0.0	0.0	0.0	0	0	0
TOTAL	255.2	125.6	386.1	56.4	32.4	80.2	887.2	797.3	985.3	247.7	151.4	352.9	68.0	28.9	103.7	82.5	43.3	123.3
0-9	7.1	4.2	10.1	0.3	0.5	0.5	2.8	6.0	0.0	2.1	4.1	0.0	0.0	0.0	0.0	0	0	0
10-14	63.6	6.2	124.3	6.3	1.8	19.5	71.3	0.0	189.6	66.6	3.2	133.4	0.0	0.0	0.0	0	0	0
15-19	1335.2	396.5	2354.7	244.7	77.9	517.7	3063.6	1951.3	5194.4	1123.5	455.6	1699.5	219.3	64.1	521.4	132.9	0	0
20-24	1420.7	698.7	2239.4	344.8	221.0	506.6	4359.5	4061.1	4827.6	1093.0	587.3	1337.1	351.5	155.2	281.2	333.3	0	0
25-29	529.7	314.8	772.1	110.9	75.2	140.8	1663.5	1720.8	1582.9	438.9	257.5	470.9	192.5	62.6	165.4	125.2	0	0
30-34	235.4	177.7	298.1	43.4	29.8	37.2	761.4	758.2	409.5	243.6	121.9	190.1	61.7	0.0	105.4	55.9	0	0
35-39	96.7	94.2	99.2	19.8	23.7	10.9	430.0	453.3	93.1	89.8	54.2	73.1	29.3	0.0	114.9	17.3	0	0
40-44	44.3	43.0	45.7	12.0	10.4	7.6	117.8	235.6	117.5	33.6	17.7	33.1	11.0	25.1	40.6	18.2	0	0
45-49	23.8	29.4	18.3	5.0	5.3	1.5	140.4	175.4	36.3	19.6	5.6	11.9	13.2	0.0	0.0	0	0	0
50-54	11.3	14.7	7.8	2.1	5.4	0.9	81.5	67.7	0.0	14.0	28.5	29.5	17.1	0.0	0.0	28.2	0	0
55-59	9.6	9.2	10.1	1.8	2.6	1.3	33.1	65.9	0.0	0.0	10.6	0.0	0.0	0.0	0.0	0	0	0
60-65	4.1	4.2	4.0	0.8	5.2	0.0	21.3	87.1	0.0	*	*	*	0.0	0.0	0.0	0	0	0
65+	2.4	1.7	2.9	0.0	0.0	0.0	9.6	22.4	0.0	*	*	*	0.0	0.0	0.0	0	0	0
TOTAL	281.9	139.8	426.2	53.2	32.6	73.7	852.0	800.1	908.3	293.1	187.8	409.2	81.7	58.4	103.0	60.4	29.7	91.9
0-9	5.3	3.1	7.6	1.0	0.0	0.5	5.7	5.6	0.0	1.4	0.0	4.2	0.0	0.0	0.0	0	0	0
10-14	59.6	6.7	115.3	7.6	0.9	12.1	132.2	0.0	144.8	47.4	6.4	129.6	0.0	0.0	0.0	0	0	0
15-19	1330.6	386.6	2343.6	281.0	59.7	443.3	3318.0	1670.1	4563.8	1171.2	541.2	1794.1	252.1	124.7	315.1	185.4	0	0
20-24	1609.3	798.9	2523.9	461.9	227.7	471.9	4783.5	4099.3	4668.5	1236.4	683.5	1628.1	227.6	188.7	516.8	133.8	0	0
25-29	572.6	341.5	829.8	115.8	78.9	145.6	1937.6	1848.0	1447.0	498.9	318.0	592.5	158.2	149.9	237.6	198.2	0	0
30-34	229.9	161.4	303.3	50.6	36.2	51.0	794.6	945.1	532.3	193.3	218.0	274.4	65.8	72.0	51.8	18.3	0	0
35-39	104.0	98.0	110.3	21.5	26.1	13.5	470.5	618.3	210.2	134.8	84.4	95.9	37.0	20.4	37.6	0	0	0
40-44	41.3	43.3	39.2	8.2	14.6	9.4	221.5	205.2	14.3	43.8	30.2	37.3	0.0	0.0	19.8	17.7	0	0
45-49	20.0	24.0	16.0	2.8	7.1	2.9	132.9	186.1	88.3	13.8	10.9	28.9	12.3	31.1	0.0	0	0	0
50-54	11.9	16.4	7.3	3.6	4.2	0.0	75.2	111.3	48.9	20.3	13.8	14.3	0.0	39.5	0.0	0	0	0
55-59	5.8	4.9	6.7	1.2	3.7	0.0	63.6	66.3	0.0	5.0	0.0	0.0	0.0	0.0	0.0	0	0	0
60-65	4.0	5.4	2.6	1.6	1.7	0.0	0.0	0.0	0.0	0.0	13.7	0.0	0.0	0.0	0.0	0	0	0
65+	2.5	3.2	2.0	*	*	*	9.1	22.4	0.0	0.0	6.8	0.0	0.0	0.0	0.0	0	0	0
TOTAL	293.7	145.1	443.7	63.5	37.9	89.1	946.4	818.1	1085.0	305.1	207.8	411.3	66.9	38.9	92.4	47.2	5.8	89.7
0-9	5.7	4.6	6.8	0.0	0.0	2.0	2.9	11.3	0.0	4.7	1.4	1.5	0.0	0.0	0.0	0	0	0
10-14	64.7	5.5	126.9	6.8	0.0	15.8	72.3	56.6	213.1	67.8	8.9	83.5	0.0	0.0	0.0	0	0	0
15-19	1321.3	375.7	2335.5	294.7	69.6	494.7	2797.1	1865.9	4644.6	1304.8	662.1	2077.2	241.2	82.0	406.3	251.5	0	0
20-24	1650.7	828.6	2574.8	495.0	297.2	653.4	4495.1	3918.0	6047.8	1418.9	798.4	1593.1	307.9	173.0	296.0	361.6	0	0
25-29	616.1	406.7	847.5	139.9	100.0	131.1	2044.9	1993.6	1861.1	612.9	367.1	696.7	161.9	29.6	290.3	250.8	0	0
30-34	254.6	201.5	313.1	51.6	44.1	58.4	999.1	894.5	676.8	247.5	159.0	232.0	106.8	83.2	49.3	71	0	0
35-39	110.9	104.0	118.0	22.7	23.0	19.7	409.3	615.5	291.7	131.7	133.4	138.3	26.6	19.2	53.3	17.9	0	0
40-44	51.2	48.7	53.7	9.6	8.6	8.0	227.9	328.4	96.4	68.7	45.0	39.4	20.2	0.0	0.0	51.6	0	0
45-49	21.9	23.5	20.2	5.5	3.5	2.1	96.8	248.0	0.0	29.0	15.9	10.6	11.4	28.9	0.0	0	0	0
50-54	15.9	19.3	12.4	7.4	5.6	1.6	59.7	123.0	23.0	9.7	17.5	18.0	0.0	0.0	0.0	0	0	0
55-59	5.3	8.0	2.6	3.2	0.0	2.2	29.9	93.5	31.3	4.6	0.0	11.1	0.0	0.0	0.0	0	0	0
60-65	4.4	5.2	3.7	0.8	3.2	0.0	0.0	0.0	0.0	0.0	0.0	0.0	29.5	0.0	0.0	0	0	0
65+	1.8	1.6	1.9	0.3	0.0	0.5	0.0	21.5	0.0	1.7	0.0	0.0	0.0	0.0	0.0	0	0	0
TOTAL	301.3	154.1	450.4	69.1	44.6	93.6	887.0	765.6	1017.9	345.7	233.7	467.2	76.9	62.0	88.9	86.5	48.4	125.6
0-9	4.1	2.4	5.8	0.5	0.0	0.0	0.0	5.5	0.0	5.2	5.5	4.4	0.0	0.0	0.0	0	0	0
10-14	50.3	5.4	97.3	11.8	0.0	13.8	103.1	0.0	152.2	36.9	2.9	134.6	0.0	0.0	0.0	16.4	0	0
15-19	1156.4	293.8	2077.2	240.4	87.7	504.9	2084.5	1465.5	4011.0	1150.0	654.0	2303.7	238.4	139.0	293.8	330.9	0	292.6
20-24	1572.1	738.9	2513.2	417.1	300.4	714.0	3541.3	3562.2	5927.0	1315.1	910.5	1827.7	290.5	228.7	410.7	344.2	0	536.5
25-29	626.1	377.4	898.9	141.1	131.6	144.7	1550.8	2125.0	1976.1	567.7	486.9	863.1	184.7	150.4	169.2	192.2	0	545.8
30-34	243.2	175.0	318.2	42.1	57.1	45.7	744.4	1155.3	801.2	257.3	235.0	276.2	73.0	97.0	128.3	122.2	0	74.4
35-39	109.5	98.5	121.2	23.0	27.0	17.2	390.7	614.5	162.8	92.1	117.7	161.9	34.3	19.5				

## Gonorrhea Tables

**Table 12: Gonorrhea—Reported cases and rates by county, ranked by rates: Colorado, 2003**

Rank	County	Cases	Rate per 100,000 Population
1	DENVER	1284	226.8
2	ARAPAHOE	407	78.2
3	EL PASO	377	68.8
4	PUEBLO	96	64.6
5	ADAMS	225	58.5
6	ALAMOSA	8	51.5
7	HUERFANO	4	49.6
8	LAS ANIMAS	8	49.1
9	CHEYENNE	1	45.6
10	PARK	6	37.2
11	LINCOLN	2	32.5
12	RIO GRANDE	4	31.0
13	OTERO	6	30.4
14	JEFFERSON	151	28.5
15	SAN MIGUEL	2	27.9
16	TELLER	6	27.1
17	COSTILLA	1	26.8
18	SUMMIT	7	25.8
19	CUSTER	1	25.7
20	MONTEZUMA	6	24.4
21	CONEJOS	2	23.6
22	PHILLIPS	1	22.0
23	MORGAN	6	21.2
24	PROWERS	3	21.2
25	BOULDER	50	17.7
26	WELD	37	17.6
27	MESA	22	17.6
28	FREMONT	7	14.7
29	GUNNISON	2	14.3
30	KIT CARSON	1	12.5
31	DOUGLAS	28	12.4
32	PITKIN	2	12.2
33	MONTROSE	4	11.1
34	LA PLATA	5	10.7
35	CLEAR CREEK	1	10.4
36	ROUTT	2	9.4
37	LARIMER	24	9.0
38	ELBERT	2	9.0
39	GRAND	1	7.3
40	DELTA	2	6.7
41	CHAFFEE	1	6.0
42	BROOMFIELD	2	4.6
43	LOGAN	1	4.6
44	EAGLE	2	4.3
	<b>COLORADO TOTAL</b>	2820	61.5
	YEAR 2010 OBJECTIVE		19.0

\* All other counties have rate of 0.0 per 100,000



**Table 13: Gonorrhea—Reported cases and rates by county/region listed in alphabetical order: Colorado, 1999- 2003**

County	Cases					Rate				
	1999	2000	2001	2002	2003	1999	2000	2001	2002	2003
Adams	246	286	254	276	225	69.2	77.9	67.2	73.5	58.5
Alamosa	1	3	4	12	8	6.7	19.8	26.2	78.0	51.5
Arapahoe	279	397	457	482	407	58.0	80.8	90.7	93.8	78.2
Archuleta	1	0	0	0	0	10.4	0.0	0.0	0.0	0.0
Baca	0	0	0	0	0	0.0	0.0	0.0	0.0	0.0
Bent	2	0	0	0	0	33.4	0.0	0.0	0.0	0.0
Boulder	43	44	46	60	50	15.1	14.8	15.2	21.3	17.7
Broomfield	0	0	0	0	2	0.0	0.0	0.0	0.0	4.6
Chaffee	0	0	1	1	1	0.0	0.0	6.1	6.0	6.0
Cheyenne	0	0	0	0	1	0.0	0.0	0.0	0.0	45.6
Clear Creek	0	1	1	0	1	0.0	10.7	10.5	0.0	10.4
Conejos	2	0	0	0	2	24.1	0.0	0.0	0.0	23.6
Costilla	0	1	1	2	1	0.0	27.3	26.8	53.4	26.8
Crowley	0	1	0	0	0	0.0	18.1	0.0	0.0	0.0
Custer	1	3	0	0	1	29.7	84.9	0.0	0.0	25.7
Delta	4	13	1	2	2	14.6	46.4	3.5	6.8	6.7
Denver	1216	1638	1548	1740	1284	222.9	294.7	276.2	310.2	226.8
Dolores	0	0	0	0	0	0.0	0.0	0.0	0.0	0.0
Douglas	14	31	25	30	28	8.6	17.2	12.5	14.0	12.4
Eagle	7	4	1	6	2	17.5	9.2	2.2	13.1	4.3
El Paso	430	311	361	354	377	84.5	59.7	67.7	65.4	68.8
Elbert	3	0	3	1	2	15.7	0.0	14.0	4.6	9.0
Fremont	6	11	2	7	7	13.3	23.7	4.2	14.8	14.7
Garfield	5	4	7	5	0	11.7	9.0	15.2	10.5	0.0
Gilpin	1	0	0	1	0	22.0	0.0	0.0	20.4	0.0
Grand	0	2	0	3	1	0.0	15.5	0.0	22.4	7.3
Gunnison	2	0	0	0	2	14.6	0.0	0.0	0.0	14.3
Hinsdale	0	0	0	0	0	0.0	0.0	0.0	0.0	0.0
Huerfano	0	1	1	0	4	0.0	12.7	12.7	0.0	49.6
Jackson	0	0	0	0	0	0.0	0.0	0.0	0.0	0.0
Jefferson	108	141	123	188	151	20.7	26.7	23.2	35.4	28.5
Kiowa	0	0	0	1	0	0.0	0.0	0.0	63.6	0.0
Kit Carson	0	1	1	0	1	0.0	12.5	12.5	0.0	12.5
La Plata	9	2	4	1	5	21.0	4.5	8.8	2.2	10.7
Lake	3	0	0	0	0	38.3	0.0	0.0	0.0	0.0
Larimer	24	25	13	31	24	9.7	9.9	5.0	11.8	9.0
Las Animas	3	11	1	2	8	19.8	72.0	6.4	12.6	49.1
Lincoln	1	0	1	2	2	16.4	0.0	16.4	32.7	32.5
Logan	2	2	2	8	1	9.9	9.6	9.1	36.5	4.6
Mesa	14	16	5	9	22	12.2	13.6	4.2	7.3	17.6
Mineral	0	0	0	0	0	0.0	0.0	0.0	0.0	0.0
Moffat	1	0	0	0	0	7.7	0.0	0.0	0.0	0.0

**Table 13: Gonorrhea—Reported cases and rates by county/region listed in alphabetical order: Colorado, 1999- 2003 (continued)**

County	Cases					Rate				
	1999	2000	2001	2002	2003	1999	2000	2001	2002	2003
Montezuma	12	3	4	4	6	51.0	12.6	16.7	16.5	24.4
Montrose	2	4	4	1	4	6.1	11.9	11.6	2.8	11.1
Morgan	9	0	3	6	6	33.4	0.0	10.9	21.5	21.2
Otero	2	3	3	6	6	9.8	14.8	15.0	30.4	30.4
Ouray	0	0	0	0	0	0.0	0.0	0.0	0.0	0.0
Park	2	2		1	6	14.4	13.6	0.0	6.4	37.2
Phillips	2	0	0	0	1	44.3	0.0	0.0	0.0	22.0
Pitkin	1	2	0	0	2	6.7	12.6	0.0	0.0	12.2
Prowers	5	5	0	0	3	34.8	34.6	0.0	0.0	21.2
Pueblo	97	151	128	87	96	69.4	106.3	88.7	59.2	64.6
Rio Blanco	0	0	0	0	0	0.0	0.0	0.0	0.0	0.0
Rio Grande	2	5	3	8	4	16.3	40.2	24.0	63.7	31.0
Routt	0	2	0	1	2	0.0	10.0	0.0	4.8	9.4
Saguache	0	0	0	0	0	0.0	0.0	0.0	0.0	0.0
San Juan	0	0	0	0	0	0.0	0.0	0.0	0.0	0.0
San Miguel	0	1	0	0	2	0.0	15.0	0.0	0.0	27.9
Sedgwick	0	0	0	1	0	0.0	0.0	0.0	36.4	0.0
Summit	3	4	5	5	7	13.3	15.5	19.0	18.7	25.8
Teller	7	6	1	3	6	34.7	28.4	4.6	13.6	27.1
Unknown	4	5	7	6	10	0.0	0.0	0.0	0.0	0.0
Washington	1	0	0	0	0	19.9	0.0	0.0	0.0	0.0
Weld	19	58	55	40	37	10.7	31.6	28.3	19.8	17.6
Yuma	0	0	0	3	0	0.0	0.0	0.0	30.3	0.0
Colorado Total	2596	3200	3076	3396	2820	61.6	73.7	69.2	75.1	61.5
Non-Denver Metro	733	707	669	680	725	34.1	31.9	29.5	29.2	30.7
Denver Metro	1863	2493	2407	2716	2095	90.2	117.4	110.7	123.8	94.1

**Table 14: Gonorrhoea—Women – Reported cases by county/region listed in alphabetical order: Colorado, 1999- 2003**

County	Cases					Rate				
	1999	2000	2001	2002	2003	1999	2000	2001	2002	2003
Adams	142	161	131	138	133	80.0	89.0	70.3	74.6	70.1
Alamosa	1	3	3	7	6	13.0	39.5	39.1	90.9	77.1
Arapahoe	165	220	258	268	229	67.0	88.3	100.9	102.8	86.8
Archuleta	1	0	0	0	0	21.0	0.0	0.0	0.0	0.0
Baca	0	0	0	0	0	0.0	0.0	0.0	0.0	0.0
Bent	1	0	0	0	0	37.0	0.0	0.0	0.0	0.0
Boulder	20	20	20	26	28	14.0	13.6	13.4	18.7	20.0
Broomfield	0	0	0	0	1	0.0	0.0	0.0	0.0	4.6
Chaffee	0	0	0	1	0	0.0	0.0	0.0	12.7	0.0
Cheyenne	0	0	0	0	1	0.0	0.0	0.0	0.0	91.4
Clear Creek	0	0	0	0	1	0.0	0.0	0.0	0.0	21.5
Conejos	2	0	0	0	1	47.0	0.0	0.0	0.0	23.5
Costilla	0	1	0	2	1	0.0	54.6	0.0	106.7	53.5
Crowley	0	1	0	0	0	0.0	55.4	0.0	0.0	0.0
Custer	1	2	0	0	1	60.0	115.5	0.0	0.0	52.1
Delta	1	10	1	1	2	7.0	71.7	7.0	6.9	13.5
Denver	549	726	696	722	608	202.0	264.3	251.6	261.0	217.8
Dolores	0	0	0	0	0	0.0	0.0	0.0	0.0	0.0
Douglas	9	17	13	12	18	11.0	18.8	12.9	11.2	15.9
Eagle	3	1	0	1	2	16.0	5.1	0.0	4.8	9.3
El Paso	223	166	185	183	214	88.0	64.1	69.6	67.9	78.5
Elbert	0	0	2	0	2	0.0	0.0	18.7	0.0	18.0
Fremont	5	8	2	2	5	25.0	40.4	9.9	9.8	24.4
Garfield	3	2	3	2	0	14.0	9.3	13.3	8.6	0.0
Gilpin	0	0	0	0	0	0.0	0.0	0.0	0.0	0.0
Grand	0	1	0	3	1	0.0	16.5	0.0	47.2	15.4
Gunnison	2	0	0	0	1	31.0	0.0	0.0	0.0	15.5
Hinsdale	0	0	0	0	0	0.0	0.0	0.0	0.0	0.0
Huerfano	0	1	0	0	3	0.0	27.9	0.0	0.0	81.1
Jackson	0	0	0	0	0	0.0	0.0	0.0	0.0	0.0
Jefferson	47	64	67	79	84	17.0	24.1	25.1	29.6	31.6
Kiowa	0	0	0	1	0	0.0	0.0	0.0	127.6	0.0
Kit Carson	0	1	1	0	0	0.0	26.5	26.5	0.0	0.0
La Plata	8	1	3	1	1	38.0	4.6	13.4	4.4	4.3
Lake	0	0	0	0	0	0.0	0.0	0.0	0.0	0.0
Larimer	15	14	7	10	16	12.0	11.1	5.4	7.6	12.0
Las Animas	2	8	1	1	5	25.0	102.5	12.6	12.4	60.2
Lincoln	0	0	0	0	1	0.0	0.0	0.0	0.0	40.4
Logan	1	1	2	5	1	10.0	10.2	19.4	48.3	9.6
Mesa	10	11	3	6	13	17.0	18.3	4.9	9.6	20.4
Mineral	0	0	0	0	0	0.0	0.0	0.0	0.0	0.0
Moffat	1	0	0	0	0	15.0	0.0	0.0	0.0	0.0

**Table 14: Gonorrhea—Women – Reported cases by county/region listed in alphabetical order: Colorado, 1999- 2003 (continued)**

County	Cases					Rate				
	1999	2000	2001	2002	2003	1999	2000	2001	2002	2003
Montezuma	10	3	4	3	5	83.0	24.7	32.8	24.4	40.1
Montrose	0	2	2	1	4	0.0	11.7	11.4	5.6	21.8
Morgan	4	0	2	3	4	29.0	0.0	14.5	21.6	28.4
Otero	1	2	1	4	6	9.0	19.3	9.8	39.7	59.5
Ouray	0	0	0	0	0	0.0	0.0	0.0	0.0	0.0
Park	1	1	0	1	3	14.0	14.1	0.0	13.1	38.3
Phillips	2	0	0	0	1	85.0	0.0	0.0	0.0	42.8
Pitkin	0	0	0	0	1	0.0	0.0	0.0	0.0	13.0
Prowers	1	3	0	0	2	14.0	41.8	0.0	0.0	28.5
Pueblo	70	99	92	64	73	98.0	136.5	124.9	85.4	96.4
Rio Blanco	0	0	0	0	0	0.0	0.0	0.0	0.0	0.0
Rio Grande	0	4	1	6	3	0.0	63.4	15.8	94.1	45.8
Routt	0	2	0	0	1	0.0	21.6	0.0	0.0	10.0
Saguache	0	0	0	0	0	0.0	0.0	0.0	0.0	0.0
San Juan	0	0	0	0	0	0.0	0.0	0.0	0.0	0.0
San Miguel	0	0	0	0	0	0.0	0.0	0.0	0.0	0.0
Sedgwick	0	0	0	1	0	0.0	0.0	0.0	72.7	0.0
Summit	1	1	1	3	5	10.0	9.3	9.0	26.3	43.2
Teller	3	6	1	2	4	30.0	57.5	9.3	18.4	36.4
Unknown	2	3	3	2	4	0.0	0.0	0.0	0.0	0.0
Washington	1	0	0	0	0	40.0	0.0	0.0	0.0	0.0
Weld	11	25	21	21	20	12.0	27.3	21.7	20.8	19.1
Yuma	0	0	0	1	0	0.0	0.0	0.0	19.9	0.0
Colorado Total	1319	1591	1526	1583	1515	62.9	73.9	69.1	70.5	66.6
Non-Denver Metro	407	403	361	364	443	38.0	36.9	32.2	31.7	38.0
Denver Metro	912	1188	1165	1219	1072	88.0	112.0	107.3	111.2	96.4

**Table 15: Gonorrhea—Men – Reported cases and rates by county/region listed in alphabetical order: Colorado, 2003**

County	Cases					Rate				
	1999	2000	2001	2002	2003	1999	2000	2001	2002	2003
Adams	104	125	123	138	92	57.8	67.1	64.2	72.5	47.2
Alamosa	0	0	1	5	2	0.0	0.0	13.1	65.2	25.7
Arapahoe	113	177	199	214	178	47.7	73.1	80.2	84.5	69.4
Archuleta	0	0	0	0	0	0.0	0.0	0.0	0.0	0.0
Baca	0	0	0	0	0	0.0	0.0	0.0	0.0	0.0
Bent	1	0	0	0	0	29.7	0.0	0.0	0.0	0.0
Boulder	23	24	26	34	22	16.0	16.0	17.1	23.9	15.4
Broomfield	0	0	0	0	1	0.0	0.0	0.0	0.0	4.6
Chaffee	0	0	1	0	1	0.0	0.0	11.4	0.0	11.3
Cheyenne	0	0	0	0	0	0.0	0.0	0.0	0.0	0.0
Clear Creek	0	1	1	0	0	0.0	20.4	20.2	0.0	0.0
Conejos	0	0	0	0	1	0.0	0.0	0.0	0.0	23.8
Costilla	0	0	1	0	0	0.0	0.0	53.9	0.0	0.0
Crowley	0	0	0	0	0	0.0	0.0	0.0	0.0	0.0
Custer	0	1	0	0	0	0.0	55.5	0.0	0.0	0.0
Delta	3	3	0	1	0	21.8	21.3	0.0	6.8	0.0
Denver	667	912	852	1018	676	242.7	324.5	300.3	358.2	235.6
Dolores	0	0	0	0	0	0.0	0.0	0.0	0.0	0.0
Douglas	5	14	12	18	10	6.2	15.5	12.0	16.9	8.9
Eagle	4	3	1	5	0	18.4	12.6	4.1	20.1	0.0
El Paso	207	145	176	171	163	81.0	55.5	65.7	63.0	59.3
Elbert	3	0	1	1	0	31.4	0.0	9.3	9.1	0.0
Fremont	1	3	0	5	2	3.9	11.3	0.0	18.5	7.4
Garfield	2	2	4	3	0	9.1	8.8	16.9	12.3	0.0
Gilpin	1	0	0	1	0	41.6	0.0	0.0	38.7	0.0
Grand	0	1	0	0	0	0.0	14.6	0.0	0.0	0.0
Gunnison	0	0	0	0	1	0.0	0.0	0.0	0.0	13.3
Hinsdale	0	0	0	0	0	0.0	0.0	0.0	0.0	0.0
Huerfano	0	0	1	0	1	0.0	0.0	23.4	0.0	22.9
Jackson	0	0	0	0	0	0.0	0.0	0.0	0.0	0.0
Jefferson	61	77	56	109	67	23.6	29.3	21.2	41.3	25.4
Kiowa	0	0	0	0	0	0.0	0.0	0.0	0.0	0.0
Kit Carson	0	0	0	0	1	0.0	0.0	0.0	0.0	23.6
La Plata	1	1	1	0	4	4.6	4.4	4.3	0.0	16.9
Lake	3	0	0	0	0	71.7	0.0	0.0	0.0	0.0
Larimer	9	11	6	21	8	7.3	8.7	4.6	16.0	6.0
Las Animas	1	3	0	1	3	13.5	40.1	0.0	12.9	37.5
Lincoln	1	0	1	2	1	29.3	0.0	27.2	54.7	27.2
Logan	1	1	0	3	0	9.4	9.1	0.0	25.9	0.0
Mesa	4	5	2	3	9	7.1	8.7	3.4	5.0	14.7
Mineral	0	0	0	0	0	0.0	0.0	0.0	0.0	0.0
Moffat	0	0	0	0	0	0.0	0.0	0.0	0.0	0.0

**Table 15: Gonorrhea—Men – Reported cases and rates by county/region listed in alphabetical order: Colorado, 2003 (continued)**

County	Cases					Rate				
	1999	2000	2001	2002	2003	1999	2000	2001	2002	2003
Montezuma	2	0	0	1	1	17.3	0.0	0.0	8.4	8.3
Montrose	2	2	2	0	0	12.4	12.1	11.7	0.0	0.0
Morgan	5	0	1	3	2	37.1	0.0	7.2	21.5	14.1
Otero	1	1	2	2	0	10.0	10.1	20.5	20.7	0.0
Ouray	0	0	0	0	0	0.0	0.0	0.0	0.0	0.0
Park	1	1	0	0	3	13.9	13.1	0.0	0.0	36.2
Phillips	0	0	0	0	0	0.0	0.0	0.0	0.0	0.0
Pitkin	1	2	0	0	1	12.6	23.5	0.0	0.0	11.4
Prowers	4	2	0	0	1	55.5	27.6	0.0	0.0	14.0
Pueblo	27	52	36	23	23	39.5	74.8	50.9	31.9	31.5
Rio Blanco	0	0	0	0	0	0.0	0.0	0.0	0.0	0.0
Rio Grande	2	1	2	2	1	33.0	16.3	32.4	32.4	15.8
Routt	0	0	0	1	1	0.0	0.0	0.0	8.9	8.8
Saguache	0	0	0	0	0	0.0	0.0	0.0	0.0	0.0
San Juan	0	0	0	0	0	0.0	0.0	0.0	0.0	0.0
San Miguel	0	1	0	0	2	0.0	27.4	0.0	0.0	51.5
Sedgwick	0	0	0	0	0	0.0	0.0	0.0	0.0	0.0
Summit	2	3	4	2	2	15.3	20.0	26.3	13.0	12.9
Teller	4	0	0	1	2	39.1	0.0	0.0	9.0	17.9
Unknown	2	2	4	4	6	0.0	0.0	0.0	0.0	0.0
Washington	0	0	0	0	0	0.0	0.0	0.0	0.0	0.0
Weld	8	33	34	19	17	9.0	35.8	34.9	18.7	16.2
Yuma	0	0	0	2	0	0.0	0.0	0.0	40.9	0.0
Colorado Total	1276	1609	1550	1813	1305	60.2	73.6	69.2	79.7	56.5
Non-Denver Metro	326	304	308	316	282	29.9	27.0	26.8	26.8	23.6
Denver Metro	950	1305	1242	1497	1023	92.1	122.9	114.2	136.3	91.8

**Table 16: Gonorrhea—Reported cases by age, gender, and race/ethnicity: Colorado, 1999-2003**

Age Group	Total			White, Non-Hispanic			Black, Non-Hispanic			Hispanic			Asian/Pacific Islander			American Indian		
	Total	Male	Female	Total	Male	Female	Total	Male	Female	Total	Male	Female	Total	Male	Female	Total	Male	Female
0-9	2	1	1	1	1	0	1	0	1	0	0	0	0	0	0	0	0	0
10-14	42	1	41	12	0	12	10	0	10	11	*	*	0	0	0	0	0	0
15-19	690	212	477	103	19	84	273	106	167	162	53	109	3	0	3	3	0	3
20-24	796	359	437	142	53	89	299	148	151	187	94	93	5	4	1	9	3	6
25-29	440	266	174	83	42	41	164	107	57	100	60	40	1	0	1	1	0	1
30-34	258	171	87	51	33	18	84	67	17	48	28	20	7	2	5	2	1	1
35-39	180	119	61	54	32	22	53	43	10	31	18	13	0	0	0	1	0	1
40-44	87	61	26	21	17	4	26	20	6	11	5	6	1	0	1	1	0	1
45-49	53	45	8	13	11	2	25	24	1	5	2	3	0	0	0	0	0	0
50-54	22	19	3	9	8	1	7	7	0	1	0	1	0	0	0	0	0	0
55-59	8	7	1	2	2	0	4	4	0	1	0	1	0	0	0	0	0	0
60-65	5	5	0	2	2	0	1	1	0	1	1	0	0	0	0	0	0	0
65+	8	7	1	0	0	0	5	5	0	3	2	1	0	0	0	0	0	0
TOTAL	2596	1276	1319	493	220	273	952	532	420	562	265	297	17	6	11	17	4	13
0-9	7	0	7	1	0	1	3	0	3	0	0	0	0	0	0	0	0	0
10-14	50	4	46	2	0	2	7	0	7	17	3	14	0	0	0	0	0	0
15-19	779	227	552	115	20	95	218	72	146	195	74	121	5	0	5	2	0	2
20-24	910	450	460	138	63	75	317	173	144	244	141	103	6	3	3	3	2	1
25-29	541	304	237	97	46	51	188	116	72	141	79	62	3	3	0	2	0	2
30-34	333	207	126	72	44	28	85	64	21	88	51	37	1	0	1	3	2	1
35-39	254	174	80	56	36	20	91	74	17	44	26	18	2	2	0	0	0	0
40-44	151	101	50	37	23	14	59	45	14	16	12	4	0	0	0	0	0	0
45-49	100	83	17	20	17	3	44	37	7	13	9	4	0	0	0	1	1	0
50-54	34	28	6	10	8	2	10	8	2	3	2	1	0	0	0	1	1	0
55-59	15	13	2	5	4	1	3	3	0	1	1	0	0	0	0	0	0	0
60-65	10	8	2	2	2	0	4	4	0	0	0	0	0	0	0	1	1	0
65+	6	5	1	0	0	0	4	4	0	2	1	1	0	0	0	0	0	0
TOTAL	3200	1609	1591	557	264	293	1035	600	435	764	399	365	17	8	9	13	7	6
0-9	3	0	3	1	0	1	2	0	2	0	0	0	0	0	0	0	0	0
10-14	40	8	32	2	0	2	15	5	10	9	1	8	0	0	0	0	0	0
15-19	742	205	537	105	17	88	263	80	183	161	64	97	5	2	3	0	0	0
20-24	890	403	487	170	80	90	327	150	177	211	113	98	4	1	3	2	0	2
25-29	540	319	221	76	49	27	213	128	85	136	76	60	4	0	4	1	0	1
30-34	341	219	122	78	49	29	110	82	28	77	43	34	4	2	2	2	1	1
35-39	227	158	69	60	43	17	80	53	27	35	24	11	1	1	0	1	1	0
40-44	120	88	32	24	19	5	50	39	11	14	7	7	0	0	0	3	1	2
45-49	99	86	13	31	23	8	35	34	1	7	6	1	0	0	0	0	0	0
50-54	42	38	4	13	12	1	12	12	0	4	3	1	0	0	0	0	0	0
55-59	18	16	2	5	5	0	3	3	0	5	4	1	0	0	0	0	0	0
60-65	7	6	1	3	2	1	1	1	0	1	1	0	0	0	0	0	0	0
65+	5	3	2	1	1	0	1	1	0	1	1	0	0	0	0	0	0	0
TOTAL	3076	1550	1526	569	300	269	1112	588	524	661	343	318	18	6	12	9	3	6
0-9	4	1	3	0	0	0	1	0	1	1	0	1	0	0	0	0	0	0
10-14	43	1	42	3	0	3	14	1	13	8	0	8	0	0	0	0	0	0
15-19	710	211	499	104	25	79	196	69	127	172	63	109	3	2	1	5	0	5
20-24	985	475	510	202	103	99	337	184	153	222	121	101	5	2	3	1	0	1
25-29	579	328	251	110	63	47	204	131	73	135	82	53	7	3	4	2	0	2
30-34	402	270	132	82	55	27	131	102	29	74	44	30	3	3	0	1	1	0
35-39	308	234	74	84	65	19	81	65	16	50	39	11	1	1	0	0	0	0
40-44	192	145	47	48	34	14	62	55	7	38	25	13	0	0	0	3	2	1
45-49	90	75	15	27	23	4	32	28	4	7	5	2	0	0	0	0	0	0
50-54	55	47	8	26	21	5	14	13	1	2	2	0	0	0	0	0	0	0
55-59	18	16	2	7	6	1	3	3	0	2	2	0	0	0	0	0	0	0
60-65	2	2	0	1	1	0	0	0	0	0	0	0	0	0	0	0	0	0
65+	7	7	0	2	2	0	0	0	0	1	1	0	0	0	0	0	0	0
TOTAL	3396	1813	1583	696	398	298	1075	651	424	712	384	328	19	11	8	12	3	9
0-9	5	2	3	1	0	1	0	0	0	2	0	2	0	0	0	0	0	0
10-14	31	4	27	6	0	6	10	2	8	7	0	7	0	0	0	0	0	0
15-19	644	163	481	107	20	87	173	58	115	157	42	115	8	2	6	3	0	3
20-24	863	347	516	155	65	90	256	116	140	202	97	105	5	1	4	3	1	2
25-29	472	245	227	82	36	46	157	105	52	105	64	41	7	2	5	2	2	0
30-34	309	184	125	60	38	22	100	74	26	40	19	21	4	3	1	0	0	0
35-39	215	147	68	48	36	12	65	54	11	35	19	16	2	2	0	0	0	0
40-44	149	111	38	32	25	7	54	43	11	15	6	9	0	0	0	0	0	0
45-49	70	50	20	17	15	2	19	17	2	7	2	5	0	0	0	0	0	0
50-54	33	28	5	12	11	1	9	9	0	2	2	0	0	0	0	1	0	1
55-59	15	14	1	7	6	1	0	0	0	2	2	0	0	0	0	0	0	0
60-65	4	3	1	3	2	1	1	1	0	0	0	0	0	0	0	0	0	0
65+	5	3	2	1	0	1	0	0	0	1	1	0	0	0	0	0	0	0
TOTAL	2820	1305	1515	531	254	277	845	480	365	575	254	321	26	10	16	9	3	6

Note: Totals include cases with missing race, gender, and/or age so they may not sum to rows and columns.

**Table 17: Gonorrhea—Reported rates by age, gender, and race/ethnicity: Colorado, 1999-2003**

Age Group	Total			White, Non-Hispanic			Black, Non-Hispanic			Hispanic			Asian/Pacific Islander			American Indian		
	Total	Male	Female	Total	Male	Female	Total	Male	Female	Total	Male	Female	Total	Male	Female	Total	Male	Female
0-9	0.3	0.3	0.3	0.3	0.5	0.0	3.0	0.0	6.2	0.0	0.0	0.0	0.0	0.0	0.0	0.3	0.5	0.0
10-14	13.8	0.6	27.7	5.7	0	11.7	62.1	0.0	126.4	18.0	*	*	0.0	0.0	0.0	5.7	0	11.7
15-19	229.8	135.7	331.2	49.4	17.6	83.6	1859.4	1388.2	2370.1	262.1	161.0	377.3	32.3	0.0	65.2	49.4	17.6	83.6
20-24	264.7	225.3	309.2	70.3	50.5	91.6	2079.3	1884.2	2314.2	275.1	246.5	311.7	49.3	77.6	20.1	70.3	50.5	91.6
25-29	133.9	153.7	111.9	36.3	35.5	37.2	1079.2	1287.6	827.8	150.1	162.7	134.5	8.0	0.0	16.5	36.3	35.5	37.2
30-34	77.7	99.3	54.4	21	26.6	15.2	545.1	781.5	248.6	83.5	89.8	76.0	63.0	36.9	87.8	21	26.6	15.2
35-39	49.8	65.0	34.3	19.5	23	16	324.2	487.3	132.9	59.3	65.1	52.8	0.0	0.0	0.0	19.5	23	16
40-44	24.1	33.5	14.5	7.3	11.8	2.8	174.8	248.0	88.1	25.1	22.1	28.4	11.2	0.0	20.3	7.3	11.8	2.8
45-49	16.5	27.9	5.0	4.9	8.3	1.5	212.3	382.8	18.2	14.4	11.2	17.8	0.0	0.0	0.0	4.9	8.3	1.5
50-54	8.2	14.1	2.3	4	7.2	0.9	82.5	158.0	0.0	3.6	0.0	7.4	0.0	0.0	0.0	4	7.2	0.9
55-59	4.2	7.5	1.0	1.3	2.6	0	65.9	131.8	0.0	5.3	0.0	10.5	0.0	0.0	0.0	1.3	2.6	0
60-65	3.5	7.2	0.0	1.7	3.4	0	21.1	43.6	0.0	6.8	13.9	0.0	0.0	0.0	0.0	1.7	3.4	0
65+	2.0	4.0	0.4	0	0	0	47.9	112.1	0.0	9.1	13.8	5.4	0.0	0.0	0.0	0	0	0
TOTAL	61.6	60.2	62.9	15.6	13.9	17.2	524.6	561.8	484.0	82.1	74.2	90.8	14.6	10.8	18.1	25.0	11.6	39.1
0-9	1.1	0.0	2.4	0.3	0.0	0.5	8.5	0.0	17.2	0.0	0.0	0.0	0.0	0.0	0.0	0	0	0
10-14	15.9	2.5	30.1	0.9	0.0	1.9	41.6	0.0	84.5	27.6	9.5	46.5	0.0	0.0	0.0	0	0	0
15-19	251.3	140.6	371.6	53.1	17.8	90.9	1461.4	931.7	2030.7	310.3	220.0	414.3	52.2	0.0	105.0	33.2	0	68.1
20-24	295.0	274.6	318.2	66.5	58.3	75.3	2214.7	2236.5	2189.1	347.3	354.3	338.1	57.0	56.6	57.4	52.6	66.4	37.2
25-29	162.4	172.1	151.3	42.0	38.2	46.1	1246.0	1419.1	1041.3	205.6	205.9	205.2	23.1	45.0	0.0	35.8	0	77.2
30-34	100.1	119.4	79.1	29.8	35.4	23.8	557.9	755.8	310.3	149.9	158.8	139.1	8.8	0.0	17.3	55.9	71.2	39.1
35-39	69.0	93.1	44.1	19.8	25.4	14.2	551.1	831.5	223.3	82.3	91.4	71.9	19.5	40.7	0.0	0	0	0
40-44	40.3	53.6	26.9	12.3	15.3	9.4	386.2	543.0	200.3	35.8	51.7	18.6	0.0	0.0	0.0	0	0	0
45-49	29.4	48.7	10.0	7.2	12.2	2.1	363.3	573.7	123.6	36.4	48.8	23.2	0.0	0.0	0.0	21.2	42.6	0
50-54	12.0	19.6	4.3	4.2	6.7	1.7	116.4	178.0	48.8	10.5	13.8	7.2	0.0	0.0	0.0	28.2	56.8	0
55-59	7.6	13.3	2.0	3.0	4.9	1.2	49.6	99.4	0.0	5.2	10.5	0.0	0.0	0.0	0.0	0	0	0
60-65	6.9	11.2	2.7	1.6	3.4	0.0	85.0	176.5	0.0	0.0	0.0	0.0	0.0	0.0	0.0	65.8	133.6	0
65+	1.4	2.8	0.4	0.0	0.0	0.0	38.3	89.5	0.0	6.0	6.8	5.3	0.0	0.0	0.0	0	0	0
TOTAL	73.8	73.7	73.9	17.0	16.2	17.9	558.1	621.9	489.0	109.8	109.3	110.3	14.3	14.1	14.5	19.6	20.8	18.4
0-9	0.5	0.0	1.0	0.2	0	0.5	5.7	0.0	11.5	0	0	0	0.0	0.0	0.0	0.0	0.0	0.0
10-14	12.5	4.9	20.6	0.9	0	1.8	86.2	56.2	117.6	14.2	3.1	25.8	0.0	0.0	0.0	0.0	0.0	0.0
15-19	226.8	120.8	340.9	44.8	14	77.8	1704.4	1016.2	2421.2	259	193.7	333.2	52.5	42.4	62.5	0.0	0.0	0.0
20-24	290.2	247.7	338.3	83.1	75	91.9	2228.2	1909.9	2594.6	297.8	284.2	315.2	37.9	18.7	57.6	33.4	0.0	70.5
25-29	163.2	182.8	141.3	33.5	41.8	24.6	1433.0	1587.2	1250.2	193.9	192.9	195.1	30.1	0.0	61.2	18.0	0.0	38.9
30-34	98.2	120.6	73.7	30.8	37.5	23.7	710.6	962.5	402.3	126.2	128.3	123.5	32.9	33.1	32.7	36.6	35.3	38.0
35-39	62.6	85.6	38.8	21.8	31	12.5	482.6	585.6	358.6	64.6	83.1	43.5	9.3	19.3	0.0	17.4	34.1	0.0
40-44	31.5	45.9	17.0	7.9	12.5	3.3	316.5	457.5	151.2	30.6	29.4	32	0.0	0.0	0.0	53.2	35.9	70.1
45-49	28.3	49.1	7.4	10.8	16	5.6	273.5	499.1	16.7	19.3	32.4	5.6	0.0	0.0	0.0	0.0	0.0	0.0
50-54	13.9	25.0	2.7	5.1	9.4	0.8	128.9	244.2	0.0	13.5	19.8	6.9	0.0	0.0	0.0	0.0	0.0	0.0
55-59	8.7	15.6	1.9	2.9	5.8	0	47.7	95.3	0.0	25.2	40.6	10	0.0	0.0	0.0	0.0	0.0	0.0
60-65	4.6	8.1	1.3	2.4	3.2	1.5	20.8	43.4	0.0	6.7	13.7	0	0.0	0.0	0.0	0.0	0.0	0.0
65+	1.1	1.6	0.8	0.3	0.6	0	9.1	21.1	0.0	1.9	4.4	0	0.0	0.0	0.0	0.0	0.0	0.0
TOTAL	69.2	69.2	69.2	17.0	18.0	16.1	586.3	596.8	574.9	91.2	90.7	91.8	14.5	10.2	18.5	13.3	8.7	17.9
0-9	0.6	0.3	1.0	0.0	0.0	0.0	2.9	0.0	5.8	0.7	0.0	1.4	0.0	0.0	0.0	0.0	0.0	0.0
10-14	13.4	0.6	26.8	1.4	0.0	2.8	77.8	10.8	148.5	12.1	0.0	24.3	0.0	0.0	0.0	0.0	0.0	0.0
15-19	210.8	121.0	307.2	42.7	19.9	67.1	1232.0	853.7	1622.7	277.1	191.9	372.7	31.5	42.4	20.7	83.8	0.0	173.4
20-24	319.4	290.9	351.4	98.3	96.2	100.7	2250.9	2335.3	2157.1	311.9	304.3	321.5	46.6	36.9	56.7	16.4	0.0	33.4
25-29	176.3	190.0	161.0	49.3	55.0	43.4	1376.7	1627.5	1078.6	187.2	203.0	167.0	54.0	46.1	61.9	35.8	0.0	78.5
30-34	112.6	144.3	77.7	31.8	41.2	21.7	828.4	1180.3	404.3	114.5	124.0	102.8	22.9	45.6	0.0	17.8	34.4	0.0
35-39	87.1	129.5	42.8	31.7	48.6	14.5	494.8	722.3	217.1	90.2	131.5	42.7	8.9	18.3	0.0	0.0	0.0	0.0
40-44	50.1	75.1	24.7	15.8	22.4	9.3	382.0	631.8	93.0	79.1	99.8	56.5	0.0	0.0	0.0	51.6	70.0	33.8
45-49	25.2	42.0	8.4	9.3	15.8	2.7	238.3	389.3	64.2	18.5	25.8	10.8	0.0	0.0	0.0	0.0	0.0	0.0
50-54	17.8	30.3	5.2	10.1	16.3	3.9	139.4	243.3	21.3	6.5	12.7	0.0	0.0	0.0	0.0	0.0	0.0	0.0
55-59	8.0	14.2	1.8	3.7	6.3	1.0	44.8	89.5	0.0	9.2	18.7	0.0	0.0	0.0	0.0	0.0	0.0	0.0
60-65	1.3	2.6	0.0	0.8	1.5	0.0	0.0	0.0	0.0	0.0	0.0	0.0	0.0	0.0	0.0	0.0	0.0	0.0
65+	1.6	3.6	0.0	0.5	1.3	0.0	0.0	0.0	0.0	1.7	3.8	0.0	0.0	0.0	0.0	0.0	0.0	0.0
TOTAL	75.1	79.7	70.5	20.6	23.6	17.7	554.4	647.3	454.3	94.5	98.0	90.8	14.8	17.9	11.9	17.3	8.5	26.3
0-9	0.8	0.6	1.0	0.2	0	0.5	0.0	0.0	0.0	1.3	0.0	2.7	0	0	0	0.0	0.0	0.0
10-14	9.6	2.4	17.1	2.7	0	5.6	54.3	21.3	88.5	9.9	0.0	20.1	0	0	0	0.0	0.0	0.0
15-19	189.0	92.6	291.8	43.6	15.8	73.3	1060.6	701.9	1428.9	247.7	127.1	378.9	82.9	41.8	123.4	49.6	0.0	103.2
20-24	271.4	205.8	345.6	72.5	58.0	88.4	1672.6	1442.2	1927.9	280.5	242.4	328.2	46.9	18.4	76.2	49.2	32.1	67.1
25-29	146.0	144.9	147.2	37.9	32.6	43.5	1072.6	1335.4	767.6	141.2	153.6	125.4	56.2	32.5	79.4	34.9	66.1	0.0
30-34	85.6	97.3	72.7	23.4	28.7	17.8	625.6	848.4	358.0	57.8	50.1	67.2	29.2	43.2	14.8	0.0	0.0	0.0
35-39	61.8	82.2	40.2	18.8	27.7	9.5	403.1	607.5	152.0	59.7	60.4	58.9	17.1					



## Syphilis Tables

**Table 18: All stages of syphilis—Reported cases and rates by county/region listed in alphabetical order: Colorado, 1999-2003**

County	Cases					Rate				
	1999	2000	2001	2002	2003	1999	2000	2001	2002	2003
Adams	7	10	10	14	14	2.0	2.7	2.6	3.7	3.6
Alamosa	0	0	1	0	0	0.0	0.0	6.5	0.0	0.0
Arapahoe	13	10	26	22	19	2.7	2.0	5.2	4.3	3.7
Archuleta	0	0	0	0	0	0.0	0.0	0.0	0.0	0.0
Baca	0	0	0	0	0	0.0	0.0	0.0	0.0	0.0
Bent	0	0	0	0	1	0.0	0.0	0.0	0.0	15.6
Boulder	0	2	2	2	8	0.0	0.7	0.7	0.7	2.8
Broomfield	0	0	0	0	0	0.0	0.0	0.0	0.0	0.0
Chaffee	0	1	1	0	0	0.0	6.1	6.1	0.0	0.0
Cheyenne	0	0	0	0	0	0.0	0.0	0.0	0.0	0.0
Clear Creek	0	0	0	0	0	0.0	0.0	0.0	0.0	0.0
Conejos	0	0	0	0	0	0.0	0.0	0.0	0.0	0.0
Costilla	0	0	0	0	0	0.0	0.0	0.0	0.0	0.0
Crowley	1	2	1	0	1	20.0	36.2	18.2	0.0	17.2
Custer	0	0	0	0	0	0.0	0.0	0.0	0.0	0.0
Delta	2	0	0	0	0	7.3	0.0	0.0	0.0	0.0
Denver	46	22	63	89	89	8.4	4.0	11.2	15.9	15.7
Dolores	0	0	0	0	0	0.0	0.0	0.0	0.0	0.0
Douglas	0	1	1	4	7	0.0	0.6	0.5	1.9	3.1
Eagle	0	0	2	0	1	0.0	0.0	4.5	0.0	2.1
El Paso	9	6	12	10	9	1.8	1.2	2.2	1.8	1.6
Elbert	0	0	0	0	0	0.0	0.0	0.0	0.0	0.0
Fremont	1	2	3	2	1	2.2	4.3	6.4	4.2	2.1
Garfield	0	2	0	0	1	0.0	4.5	0.0	0.0	2.1
Gilpin	0	0	0	0	0	0.0	0.0	0.0	0.0	0.0
Grand	0	0	0	0	0	0.0	0.0	0.0	0.0	0.0
Gunnison	0	0	0	0	0	0.0	0.0	0.0	0.0	0.0
Hinsdale	0	0	0	0	0	0.0	0.0	0.0	0.0	0.0
Huerfano	0	0	0	1	0	0.0	0.0	0.0	12.5	0.0
Jackson	0	0	0	0	0	0.0	0.0	0.0	0.0	0.0
Jefferson	6	2	5	12	9	1.2	0.4	0.9	2.3	1.7
Kiowa	0	0	0	0	0	0.0	0.0	0.0	0.0	0.0
Kit Carson	0	0	0	0	0	0.0	0.0	0.0	0.0	0.0
La Plata	0	0	0	1	1	0.0	0.0	0.0	2.2	2.1
Lake	0	0	0	0	0	0.0	0.0	0.0	0.0	0.0
Larimer	1	0	8	5	3	0.4	0.0	3.1	1.9	1.1
Las Animas	1	0	0	0	0	6.6	0.0	0.0	0.0	0.0
Lincoln	0	0	0	0	0	0.0	0.0	0.0	0.0	0.0

**Table 18: All stages of syphilis—Reported cases and rates by county/region listed in alphabetical order: Colorado, 1999-2003 (continued)**

County	Cases					Rate				
	1999	2000	2001	2002	2003	1999	2000	2001	2002	2003
Logan	0	0	0	0	0	0.0	0.0	0.0	0.0	0.0
Mesa	0	2	0	2	1	0.0	1.7	0.0	1.6	0.8
Mineral	0	0	0	0	0	0.0	0.0	0.0	0.0	0.0
Moffat	0	1	0	0	0	0.0	7.6	0.0	0.0	0.0
Montezuma	1	0	0	0	0	4.3	0.0	0.0	0.0	0.0
Montrose	0	0	0	1	0	0.0	0.0	0.0	2.8	0.0
Morgan	0	0	2	1	0	0.0	0.0	7.2	3.6	0.0
Otero	0	0	0	1	0	0.0	0.0	0.0	5.1	0.0
Ouray	0	0	0	0	0	0.0	0.0	0.0	0.0	0.0
Park	0	0	0	0	0	0.0	0.0	0.0	0.0	0.0
Phillips	0	0	0	0	0	0.0	0.0	0.0	0.0	0.0
Pitkin	0	0	0	0	0	0.0	0.0	0.0	0.0	0.0
Prowers	1	0	0	0	0	7.0	0.0	0.0	0.0	0.0
Pueblo	1	2	1	1	0	0.7	1.4	0.7	0.7	0.0
Rio Blanco	0	0	0	0	0	0.0	0.0	0.0	0.0	0.0
Rio Grande	1	0	0	0	0	8.1	0.0	0.0	0.0	0.0
Routt	0	0	0	0	0	0.0	0.0	0.0	0.0	0.0
Saguache	0	0	0	0	0	0.0	0.0	0.0	0.0	0.0
San Juan	0	0	0	0	0	0.0	0.0	0.0	0.0	0.0
San Miguel	0	0	0	0	1	0.0	0.0	0.0	0.0	13.9
Sedgwick	0	0	0	0	0	0.0	0.0	0.0	0.0	0.0
Summit	0	0	1	0	3	0.0	0.0	3.8	0.0	11.1
Teller	0	0	0	0	1	0.0	0.0	0.0	0.0	4.5
Unknown	0	0	1	0	2	0.0	0.0	0.0	0.0	0.0
Washington	0	0	0	1	0	0.0	0.0	0.0	19.7	0.0
Weld	2	7	3	6	3	1.1	3.8	1.5	3.0	1.4
Yuma	0	1	1	0	0	0.0	10.1	10.1	0.0	0.0
Colorado Total	93	73	144	175	175	2.2	1.7	3.2	3.9	3.8
Non-Denver Metro	21	28	39	34	37	1	1.3	1.7	1.5	1.6
Denver Metro	72	45	105	141	138	3.5	2.1	4.8	6.4	6.2

**Table 19: Primary and secondary syphilis—Reported cases and rates by county:  
Ranked by rates: Colorado, 2003**

Rank	County	Cases	Rate per 100,000 Population
1	Denver	31	5.5
2	Boulder	3	1.1
3	Adams	3	0.8
4	Douglas	1	0.4
5	Arapahoe	2	0.4
6	Jefferson	2	0.4
7	Larimer	1	0.4
8	El Paso	1	0.2
<b>Colorado Total</b>		<b>46</b>	<b>1.0</b>
<b>YEAR 2010 OBJECTIVE</b>			<b>0.2</b>

**Table 20: Primary and secondary syphilis—Reported cases and rates by county/region listed in alphabetical order: Colorado, 1999-2003**

County	Cases					Rate				
	1999	2000	2001	2002	2003	1999	2000	2001	2002	2003
Adams	0	5	0	1	3	0.0	1.4	0.0	0.3	0.8
Alamosa	0	0	0	0	0	0.0	0.0	0.0	0.0	0.0
Arapahoe	3	0	2	7	2	0.6	0.0	0.4	1.4	0.4
Archuleta	0	0	0	0	0	0.0	0.0	0.0	0.0	0.0
Baca	0	0	0	0	0	0.0	0.0	0.0	0.0	0.0
Bent	0	0	0	0	0	0.0	0.0	0.0	0.0	0.0
Boulder	0	1	0	1	3	0.0	0.3	0.0	0.4	1.1
Broomfield	0	0	0	0	0	0.0	0.0	0.0	0.0	0.0
Chaffee	0	0	0	0	0	0.0	0.0	0.0	0.0	0.0
Cheyenne	0	0	0	0	0	0.0	0.0	0.0	0.0	0.0
Clear Creek	0	0	0	0	0	0.0	0.0	0.0	0.0	0.0
Conejos	0	0	0	0	0	0.0	0.0	0.0	0.0	0.0
Costilla	0	0	0	0	0	0.0	0.0	0.0	0.0	0.0
Crowley	0	0	0	0	0	0.0	0.0	0.0	0.0	0.0
Custer	0	0	0	0	0	0.0	0.0	0.0	0.0	0.0
Delta	0	0	0	0	0	0.0	0.0	0.0	0.0	0.0
Denver	7	2	14	41	31	1.3	0.4	2.5	7.3	5.5
Dolores	0	0	0	0	0	0.0	0.0	0.0	0.0	0.0
Douglas	0	0	0	2	1	0.0	0.0	0.0	0.9	0.4
Eagle	0	0	0	0	0	0.0	0.0	0.0	0.0	0.0
El Paso	0	3	4	6	1	0.0	0.6	0.7	1.1	0.2
Elbert	0	0	0	0	0	0.0	0.0	0.0	0.0	0.0
Fremont	0	0	0	0	0	0.0	0.0	0.0	0.0	0.0
Garfield	0	0	0	0	0	0.0	0.0	0.0	0.0	0.0
Gilpin	0	0	0	0	0	0.0	0.0	0.0	0.0	0.0
Grand	0	0	0	0	0	0.0	0.0	0.0	0.0	0.0
Gunnison	0	0	0	0	0	0.0	0.0	0.0	0.0	0.0
Hinsdale	0	0	0	0	0	0.0	0.0	0.0	0.0	0.0
Huerfano	0	0	0	0	0	0.0	0.0	0.0	0.0	0.0
Jackson	0	0	0	0	0	0.0	0.0	0.0	0.0	0.0
Jefferson	0	0	1	4	2	0.0	0.0	0.2	0.8	0.4
Kiowa	0	0	0	0	0	0.0	0.0	0.0	0.0	0.0
Kit Carson	0	0	0	0	0	0.0	0.0	0.0	0.0	0.0
La Plata	0	0	0	0	0	0.0	0.0	0.0	0.0	0.0
Lake	0	0	0	0	0	0.0	0.0	0.0	0.0	0.0
Larimer	0	0	1	1	1	0.0	0.0	0.4	0.4	0.4
Las Animas	1	0	0	0	0	6.6	0.0	0.0	0.0	0.0
Lincoln	0	0	0	0	0	0.0	0.0	0.0	0.0	0.0
Logan	0	0	0	0	0	0.0	0.0	0.0	0.0	0.0
Mesa	0	0	0	0	0	0.0	0.0	0.0	0.0	0.0
Mineral	0	0	0	0	0	0.0	0.0	0.0	0.0	0.0
Moffat	0	0	0	0	0	0.0	0.0	0.0	0.0	0.0

**Table 20: Primary and secondary syphilis—Reported cases and rates by county/region listed in alphabetical order: Colorado, 1999-2003 (continued)**

County	Cases					Rate				
	1999	2000	2001	2002	2003	1999	2000	2001	2002	2003
Montezuma	0	0	0	0	0	0.0	0.0	0.0	0.0	0.0
Montrose	0	0	0	0	0	0.0	0.0	0.0	0.0	0.0
Morgan	0	0	0	0	0	0.0	0.0	0.0	0.0	0.0
Otero	0	0	0	0	0	0.0	0.0	0.0	0.0	0.0
Ouray	0	0	0	0	0	0.0	0.0	0.0	0.0	0.0
Park	0	0	0	0	0	0.0	0.0	0.0	0.0	0.0
Phillips	0	0	0	0	0	0.0	0.0	0.0	0.0	0.0
Pitkin	0	0	0	0	0	0.0	0.0	0.0	0.0	0.0
Prowers	0	0	0	0	0	0.0	0.0	0.0	0.0	0.0
Pueblo	0	0	0	1	0	0.0	0.0	0.0	0.7	0.0
Rio Blanco	0	0	0	0	0	0.0	0.0	0.0	0.0	0.0
Rio Grande	0	0	0	0	0	0.0	0.0	0.0	0.0	0.0
Routt	0	0	0	0	0	0.0	0.0	0.0	0.0	0.0
Saguache	0	0	0	0	0	0.0	0.0	0.0	0.0	0.0
San Juan	0	0	0	0	0	0.0	0.0	0.0	0.0	0.0
San Miguel	0	0	0	0	0	0.0	0.0	0.0	0.0	0.0
Sedgwick	0	0	0	0	0	0.0	0.0	0.0	0.0	0.0
Summit	0	0	0	0	0	0.0	0.0	0.0	0.0	0.0
Teller	0	0	0	0	0	0.0	0.0	0.0	0.0	0.0
Unknown	0	0	0	0	2	0.0	0.0	0.0	0.0	0.0
Washington	0	0	0	0	0	0.0	0.0	0.0	0.0	0.0
Weld	0	1	0	0	0	0.0	0.5	0.0	0.0	0.0
Yuma	0	0	0	0	0	0.0	0.0	0.0	0.0	0.0
Colorado Total	11	12	22	64	46	0.3	0.3	0.5	1.4	1.0
Non-Denver Metro	1	5	5	9	7	0	0.2	0.2	0.4	0.3
Denver Metro	10	7	17	55	39	0.5	0.3	0.8	2.5	1.8

**Table 21: Primary and secondary syphilis—Women – Reported cases and rates by county/region listed in alphabetical order: Colorado, 1999-2003**

County	Cases					Rate				
	1999	2000	2001	2002	2003	1999	2000	2001	2002	2003
Adams	0	2	0	0	0	0.0	1.1	0.0	0.0	0.0
Alamosa	0	0	0	0	0	0.0	0.0	0.0	0.0	0.0
Arapahoe	2	0	0	0	1	0.8	0.0	0.0	0.0	0.4
Archuleta	0	0	0	0	0	0.0	0.0	0.0	0.0	0.0
Baca	0	0	0	0	0	0.0	0.0	0.0	0.0	0.0
Bent	0	0	0	0	0	0.0	0.0	0.0	0.0	0.0
Boulder	0	0	0	0	1	0.0	0.0	0.0	0.0	0.7
Broomfield	0	0	0	0	0	0.0	0.0	0.0	0.0	0.0
Chaffee	0	0	0	0	0	0.0	0.0	0.0	0.0	0.0
Cheyenne	0	0	0	0	0	0.0	0.0	0.0	0.0	0.0
Clear Creek	0	0	0	0	0	0.0	0.0	0.0	0.0	0.0
Conejos	0	0	0	0	0	0.0	0.0	0.0	0.0	0.0
Costilla	0	0	0	0	0	0.0	0.0	0.0	0.0	0.0
Crowley	0	0	0	0	0	0.0	0.0	0.0	0.0	0.0
Custer	0	0	0	0	0	0.0	0.0	0.0	0.0	0.0
Delta	0	0	0	0	0	0.0	0.0	0.0	0.0	0.0
Denver	3	0	1	0	1	1.1	0.0	0.4	0.0	0.4
Dolores	0	0	0	0	0	0.0	0.0	0.0	0.0	0.0
Douglas	0	0	0	0	0	0.0	0.0	0.0	0.0	0.0
Eagle	0	0	0	0	0	0.0	0.0	0.0	0.0	0.0
El Paso	0	1	2	1	1	0.0	0.4	0.8	0.4	0.4
Elbert	0	0	0	0	0	0.0	0.0	0.0	0.0	0.0
Fremont	0	0	0	0	0	0.0	0.0	0.0	0.0	0.0
Garfield	0	0	0	0	0	0.0	0.0	0.0	0.0	0.0
Gilpin	0	0	0	0	0	0.0	0.0	0.0	0.0	0.0
Grand	0	0	0	0	0	0.0	0.0	0.0	0.0	0.0
Gunnison	0	0	0	0	0	0.0	0.0	0.0	0.0	0.0
Hinsdale	0	0	0	0	0	0.0	0.0	0.0	0.0	0.0
Huerfano	0	0	0	0	0	0.0	0.0	0.0	0.0	0.0
Jackson	0	0	0	0	0	0.0	0.0	0.0	0.0	0.0
Jefferson	0	0	0	0	1	0.0	0.0	0.0	0.0	0.4
Kiowa	0	0	0	0	0	0.0	0.0	0.0	0.0	0.0
Kit Carson	0	0	0	0	0	0.0	0.0	0.0	0.0	0.0
La Plata	0	0	0	0	0	0.0	0.0	0.0	0.0	0.0
Lake	0	0	0	0	0	0.0	0.0	0.0	0.0	0.0
Larimer	0	0	0	1	0	0.0	0.0	0.0	0.8	0.0
Las Animas	1	0	0	0	0	12.9	0.0	0.0	0.0	0.0
Lincoln	0	0	0	0	0	0.0	0.0	0.0	0.0	0.0
Logan	0	0	0	0	0	0.0	0.0	0.0	0.0	0.0
Mesa	0	0	0	0	0	0.0	0.0	0.0	0.0	0.0
Mineral	0	0	0	0	0	0.0	0.0	0.0	0.0	0.0
Moffat	0	0	0	0	0	0.0	0.0	0.0	0.0	0.0

**Table 21: Primary and secondary syphilis—Women – Reported cases and rates by county/region listed in alphabetical order: Colorado, 1999-2003 (continued)**

County	Cases					Rate				
	1999	2000	2001	2002	2003	1999	2000	2001	2002	2003
Montezuma	0	0	0	0	0	0.0	0.0	0.0	0.0	0.0
Montrose	0	0	0	0	0	0.0	0.0	0.0	0.0	0.0
Morgan	0	0	0	0	0	0.0	0.0	0.0	0.0	0.0
Otero	0	0	0	0	0	0.0	0.0	0.0	0.0	0.0
Ouray	0	0	0	0	0	0.0	0.0	0.0	0.0	0.0
Park	0	0	0	0	0	0.0	0.0	0.0	0.0	0.0
Phillips	0	0	0	0	0	0.0	0.0	0.0	0.0	0.0
Pitkin	0	0	0	0	0	0.0	0.0	0.0	0.0	0.0
Prowers	0	0	0	0	0	0.0	0.0	0.0	0.0	0.0
Pueblo	0	0	0	0	0	0.0	0.0	0.0	0.0	0.0
Rio Blanco	0	0	0	0	0	0.0	0.0	0.0	0.0	0.0
Rio Grande	0	0	0	0	0	0.0	0.0	0.0	0.0	0.0
Routt	0	0	0	0	0	0.0	0.0	0.0	0.0	0.0
Saguache	0	0	0	0	0	0.0	0.0	0.0	0.0	0.0
San Juan	0	0	0	0	0	0.0	0.0	0.0	0.0	0.0
San Miguel	0	0	0	0	0	0.0	0.0	0.0	0.0	0.0
Sedgwick	0	0	0	0	0	0.0	0.0	0.0	0.0	0.0
Summit	0	0	0	0	0	0.0	0.0	0.0	0.0	0.0
Teller	0	0	0	0	0	0.0	0.0	0.0	0.0	0.0
Washington	0	0	0	0	0	0.0	0.0	0.0	0.0	0.0
Weld	0	1	0	0	0	0.0	1.1	0.0	0.0	0.0
Yuma	0	0	0	0	0	0.0	0.0	0.0	0.0	0.0
Colorado Total	6	4	3	2	5	0.3	0.2	0.1	0.1	0.2
Non-Denver Metro	1	2	2	2	2	0.1	0.2	0.2	0.2	0.2
Denver Metro	5	2	1	0	3	0.5	0.2	0.1	0.0	0.3

**Table 22: Primary and secondary syphilis—Men – Reported cases and rates by county/region listed in alphabetical order: Colorado, 1999-2003**

County	Cases					Rate				
	1999	2000	2001	2002	2003	1999	2000	2001	2002	2003
Adams	0	3	0	1	3	0.0	1.6	0.0	0.5	1.5
Alamosa	0	0	0	0	0	0.0	0.0	0.0	0.0	0.0
Arapahoe	1	0	2	7	1	0.4	0.0	0.8	2.8	0.4
Archuleta	0	0	0	0	0	0.0	0.0	0.0	0.0	0.0
Baca	0	0	0	0	0	0.0	0.0	0.0	0.0	0.0
Bent	0	0	0	0	0	0.0	0.0	0.0	0.0	0.0
Boulder	0	1	0	1	2	0.0	0.7	0.0	0.7	1.4
Broomfield	0	0	0	0	0	0.0	0.0	0.0	0.0	0.0
Chaffee	0	0	0	0	0	0.0	0.0	0.0	0.0	0.0
Cheyenne	0	0	0	0	0	0.0	0.0	0.0	0.0	0.0
Clear Creek	0	0	0	0	0	0.0	0.0	0.0	0.0	0.0
Conejos	0	0	0	0	0	0.0	0.0	0.0	0.0	0.0
Costilla	0	0	0	0	0	0.0	0.0	0.0	0.0	0.0
Crowley	0	0	0	0	0	0.0	0.0	0.0	0.0	0.0
Custer	0	0	0	0	0	0.0	0.0	0.0	0.0	0.0
Delta	0	0	0	0	0	0.0	0.0	0.0	0.0	0.0
Denver	4	2	13	41	30	1.5	0.7	4.6	14.4	10.5
Dolores	0	0	0	0	0	0.0	0.0	0.0	0.0	0.0
Douglas	0	0	0	2	1	0.0	0.0	0.0	1.9	0.9
Eagle	0	0	0	0	0	0.0	0.0	0.0	0.0	0.0
El Paso	0	2	2	5	0	0.0	0.8	0.7	1.8	0.0
Elbert	0	0	0	0	0	0.0	0.0	0.0	0.0	0.0
Fremont	0	0	0	0	0	0.0	0.0	0.0	0.0	0.0
Garfield	0	0	0	0	0	0.0	0.0	0.0	0.0	0.0
Gilpin	0	0	0	0	0	0.0	0.0	0.0	0.0	0.0
Grand	0	0	0	0	0	0.0	0.0	0.0	0.0	0.0
Gunnison	0	0	0	0	0	0.0	0.0	0.0	0.0	0.0
Hinsdale	0	0	0	0	0	0.0	0.0	0.0	0.0	0.0
Huerfano	0	0	0	0	0	0.0	0.0	0.0	0.0	0.0
Jackson	0	0	0	0	0	0.0	0.0	0.0	0.0	0.0
Jefferson	0	0	1	4	1	0.0	0.0	0.4	1.5	0.4
Kiowa	0	0	0	0	0	0.0	0.0	0.0	0.0	0.0
Kit Carson	0	0	0	0	0	0.0	0.0	0.0	0.0	0.0
La Plata	0	0	0	0	0	0.0	0.0	0.0	0.0	0.0
Lake	0	0	0	0	0	0.0	0.0	0.0	0.0	0.0
Larimer	0	0	1	0	1	0.0	0.0	0.8	0.0	0.8
Las Animas	0	0	0	0	0	0.0	0.0	0.0	0.0	0.0
Lincoln	0	0	0	0	0	0.0	0.0	0.0	0.0	0.0
Logan	0	0	0	0	0	0.0	0.0	0.0	0.0	0.0
Mesa	0	0	0	0	0	0.0	0.0	0.0	0.0	0.0
Mineral	0	0	0	0	0	0.0	0.0	0.0	0.0	0.0
Moffat	0	0	0	0	0	0.0	0.0	0.0	0.0	0.0



**Table 22: Primary and secondary syphilis—Men – Reported cases and rates by county/region listed in alphabetical order: Colorado, 1999-2003 (continued)**

County	Cases					Rate				
	1999	2000	2001	2002	2003	1999	2000	2001	2002	2003
Montezuma	0	0	0	0	0	0.0	0.0	0.0	0.0	0.0
Montrose	0	0	0	0	0	0.0	0.0	0.0	0.0	0.0
Morgan	0	0	0	0	0	0.0	0.0	0.0	0.0	0.0
Otero	0	0	0	0	0	0.0	0.0	0.0	0.0	0.0
Ouray	0	0	0	0	0	0.0	0.0	0.0	0.0	0.0
Park	0	0	0	0	0	0.0	0.0	0.0	0.0	0.0
Phillips	0	0	0	0	0	0.0	0.0	0.0	0.0	0.0
Pitkin	0	0	0	0	0	0.0	0.0	0.0	0.0	0.0
Prowers	0	0	0	0	0	0.0	0.0	0.0	0.0	0.0
Pueblo	0	0	0	1	0	0.0	0.0	0.0	1.4	0.0
Rio Blanco	0	0	0	0	0	0.0	0.0	0.0	0.0	0.0
Rio Grande	0	0	0	0	0	0.0	0.0	0.0	0.0	0.0
Routt	0	0	0	0	0	0.0	0.0	0.0	0.0	0.0
Saguache	0	0	0	0	0	0.0	0.0	0.0	0.0	0.0
San Juan	0	0	0	0	0	0.0	0.0	0.0	0.0	0.0
San Miguel	0	0	0	0	0	0.0	0.0	0.0	0.0	0.0
Sedgwick	0	0	0	0	0	0.0	0.0	0.0	0.0	0.0
Summit	0	0	0	0	0	0.0	0.0	0.0	0.0	0.0
Teller	0	0	0	0	0	0.0	0.0	0.0	0.0	0.0
Unknown	0	0	0	0	2	0.0	0.0	0.0	0.0	0.0
Washington	0	0	0	0	0	0.0	0.0	0.0	0.0	0.0
Weld	0	0	0	0	0	0.0	0.0	0.0	0.0	0.0
Yuma	0	0	0	0	0	0.0	0.0	0.0	0.0	0.0
Colorado Total	5	8	19	62	41	0.2	0.4	0.8	2.7	1.8
Non-Denver Metro	0	3	3	7	5	0	0.3	0.3	0.6	0.4
Denver Metro	5	5	16	55	36	0.5	0.5	1.5	5	3.2

**Table 23: Primary and secondary syphilis—Reported cases by age, gender, and race/ethnicity: Colorado, 1999- 2003**

Age Group	Total			White, Non-Hispanic			Black, Non-Hispanic			Hispanic			Asian/Pacific Islander			American Indian		
	Total	Male	Female	Total	Male	Female	Total	Male	Female	Total	Male	Female	Total	Male	Female	Total	Male	Female
0-9	0	0	0	0	0	0	0	0	0	0	0	0	0	0	0	0	0	0
10-14	0	0	0	0	0	0	0	0	0	0	0	0	0	0	0	0	0	0
15-19	0	0	0	0	0	0	0	0	0	0	0	0	0	0	0	0	0	0
20-24	3	1	2	1	0	1	1	0	1	1	1	0	0	0	0	0	0	0
25-29	0	0	0	0	0	0	0	0	0	0	0	0	0	0	0	0	0	0
30-34	3	0	3	1	0	1	0	0	0	0	0	0	0	0	0	0	0	0
35-39	1	1	0	0	0	0	1	1	0	0	0	0	0	0	0	0	0	0
40-44	2	2	0	0	0	0	1	1	0	1	1	0	0	0	0	0	0	0
45-49	1	0	1	1	0	1	0	0	0	0	0	0	0	0	0	0	0	0
50-54	1	1	0	1	1	0	0	0	0	0	0	0	0	0	0	0	0	0
55-59	0	0	0	0	0	0	0	0	0	0	0	0	0	0	0	0	0	0
60-65	0	0	0	0	0	0	0	0	0	0	0	0	0	0	0	0	0	0
65+	0	0	0	0	0	0	0	0	0	0	0	0	0	0	0	0	0	0
<b>TOTAL</b>	<b>11</b>	<b>5</b>	<b>6</b>	<b>4</b>	<b>1</b>	<b>3</b>	<b>3</b>	<b>2</b>	<b>1</b>	<b>2</b>	<b>2</b>	<b>0</b>	<b>0</b>	<b>0</b>	<b>0</b>	<b>0</b>	<b>0</b>	<b>0</b>
0-9	0	0	0	0	0	0	0	0	0	0	0	0	0	0	0	0	0	0
10-14	0	0	0	0	0	0	0	0	0	0	0	0	0	0	0	0	0	0
15-19	1	0	1	0	0	0	1	0	1	0	0	0	0	0	0	0	0	0
20-24	0	0	0	0	0	0	0	0	0	0	0	0	0	0	0	0	0	0
25-29	1	0	1	0	0	0	0	0	0	1	0	1	0	0	0	0	0	0
30-34	3	2	1	0	0	0	0	0	0	3	2	1	0	0	0	0	0	0
35-39	4	3	1	3	2	1	1	1	0	0	0	0	0	0	0	0	0	0
40-44	2	2	0	0	0	0	1	1	0	0	0	0	0	0	1	1	0	0
45-49	0	0	0	0	0	0	0	0	0	0	0	0	0	0	0	0	0	0
50-54	0	0	0	0	0	0	0	0	0	0	0	0	0	0	0	0	0	0
55-59	1	1	0	0	0	0	0	0	0	1	1	0	0	0	0	0	0	0
60-65	0	0	0	0	0	0	0	0	0	0	0	0	0	0	0	0	0	0
65+	0	0	0	0	0	0	0	0	0	0	0	0	0	0	0	0	0	0
<b>TOTAL</b>	<b>12</b>	<b>8</b>	<b>4</b>	<b>3</b>	<b>2</b>	<b>1</b>	<b>3</b>	<b>2</b>	<b>1</b>	<b>5</b>	<b>3</b>	<b>2</b>	<b>0</b>	<b>0</b>	<b>0</b>	<b>1</b>	<b>1</b>	<b>0</b>
0-9	0	0	0	0	0	0	0	0	0	0	0	0	0	0	0	0	0	0
10-14	0	0	0	0	0	0	0	0	0	0	0	0	0	0	0	0	0	0
15-19	0	0	0	0	0	0	0	0	0	0	0	0	0	0	0	0	0	0
20-24	1	0	1	0	0	0	0	0	0	1	0	1	0	0	0	0	0	0
25-29	4	4	0	2	2	0	1	1	0	1	1	0	0	0	0	0	0	0
30-34	4	4	0	1	1	0	1	1	0	2	2	0	0	0	0	0	0	0
35-39	4	4	0	3	3	0	0	0	0	1	1	0	0	0	0	0	0	0
40-44	4	3	1	3	3	0	0	0	0	0	0	0	0	0	0	0	0	0
45-49	4	3	1	4	3	1	0	0	0	0	0	0	0	0	0	0	0	0
50-54	1	1	0	0	0	0	1	1	0	0	0	0	0	0	0	0	0	0
55-59	0	0	0	0	0	0	0	0	0	0	0	0	0	0	0	0	0	0
60-65	0	0	0	0	0	0	0	0	0	0	0	0	0	0	0	0	0	0
65+	0	0	0	0	0	0	0	0	0	0	0	0	0	0	0	0	0	0
<b>TOTAL</b>	<b>22</b>	<b>19</b>	<b>3</b>	<b>13</b>	<b>12</b>	<b>1</b>	<b>3</b>	<b>3</b>	<b>0</b>	<b>5</b>	<b>4</b>	<b>1</b>	<b>0</b>	<b>0</b>	<b>0</b>	<b>0</b>	<b>0</b>	<b>0</b>
0-9	0	0	0	0	0	0	0	0	0	0	0	0	0	0	0	0	0	0
10-14	0	0	0	0	0	0	0	0	0	0	0	0	0	0	0	0	0	0
15-19	1	0	1	0	0	0	0	0	0	1	0	1	0	0	0	0	0	0
20-24	4	4	0	1	1	0	1	1	0	1	1	0	1	1	0	0	0	0
25-29	4	4	0	2	2	0	0	0	0	2	2	0	0	0	0	0	0	0
30-34	10	10	0	6	6	0	0	0	0	2	2	0	0	0	0	0	0	0
35-39	20	19	1	13	13	0	4	3	1	3	3	0	0	0	0	0	0	0
40-44	12	12	0	12	12	0	0	0	0	0	0	0	0	0	0	0	0	0
45-49	3	3	0	3	3	0	0	0	0	0	0	0	0	0	0	0	0	0
50-54	7	7	0	5	5	0	1	1	0	1	1	0	0	0	0	0	0	0
55-59	2	2	0	2	2	0	0	0	0	0	0	0	0	0	0	0	0	0
60-65	0	0	0	0	0	0	0	0	0	0	0	0	0	0	0	0	0	0
65+	1	1	0	0	0	0	1	1	0	0	0	0	0	0	0	0	0	0
<b>TOTAL</b>	<b>64</b>	<b>62</b>	<b>2</b>	<b>44</b>	<b>44</b>	<b>0</b>	<b>7</b>	<b>6</b>	<b>1</b>	<b>10</b>	<b>9</b>	<b>1</b>	<b>1</b>	<b>1</b>	<b>0</b>	<b>0</b>	<b>0</b>	<b>0</b>
0-9	0	0	0	0	0	0	0	0	0	0	0	0	0	0	0	0	0	0
10-14	0	0	0	0	0	0	0	0	0	0	0	0	0	0	0	0	0	0
15-19	1	0	1	0	0	0	0	0	0	1	0	1	0	0	0	0	0	0
20-24	3	3	0	1	1	0	0	0	0	2	2	0	0	0	0	0	0	0
25-29	3	3	0	0	0	0	2	2	0	1	1	0	0	0	0	0	0	0
30-34	10	9	1	6	5	1	1	1	0	1	1	0	0	0	0	1	1	0
35-39	11	9	2	7	7	0	2	0	2	1	1	0	0	0	0	0	0	0
40-44	9	8	1	6	6	0	1	1	0	2	1	1	0	0	0	0	0	0
45-49	6	6	0	5	5	0	1	1	0	0	0	0	0	0	0	0	0	0
50-54	2	2	0	1	1	0	1	1	0	0	0	0	0	0	0	0	0	0
55-59	1	1	0	1	1	0	0	0	0	0	0	0	0	0	0	0	0	0
60-65	0	0	0	0	0	0	0	0	0	0	0	0	0	0	0	0	0	0
65+	0	0	0	0	0	0	0	0	0	0	0	0	0	0	0	0	0	0
<b>TOTAL</b>	<b>46</b>	<b>41</b>	<b>5</b>	<b>27</b>	<b>26</b>	<b>1</b>	<b>8</b>	<b>6</b>	<b>2</b>	<b>8</b>	<b>6</b>	<b>2</b>	<b>0</b>	<b>0</b>	<b>0</b>	<b>1</b>	<b>1</b>	<b>0</b>

Note: Totals include cases with missing race, gender, and/or age so they may not sum to rows and columns.

**Table 24: Primary and secondary syphilis—Reported rates by age, gender, and race/ethnicity: Colorado, 1999- 2003**

Age Group	Total			White, Non-Hispanic			Black, Non-Hispanic			Hispanic			Asian/Pacific Islander			American Indian		
	Total	Male	Female	Total	Male	Female	Total	Male	Female	Total	Male	Female	Total	Male	Female	Total	Male	Female
0-9	0.0	0.0	0.0	0	0	0	0.0	0.0	0.0	0.0	0.0	0.0	0.0	0.0	0.0	0.0	0.0	0.0
10-14	0.0	0.0	0.0	0	0	0	0.0	0.0	0.0	0.0	0.0	0.0	0.0	0.0	0.0	0.0	0.0	0.0
15-19	0.0	0.0	0.0	0	0	0	0.0	0.0	0.0	0.0	0.0	0.0	0.0	0.0	0.0	0.0	0.0	0.0
20-24	0.7	0.6	0.7	0.5	0	1	7.1	0.0	15.3	0.0	2.6	0.0	0.0	0.0	0.0	0.0	0.0	0.0
25-29	0.9	1.8	0.0	0	0	0	13.3	0.0	0.0	0.0	0.0	0.0	0.0	0.0	0.0	0.0	0.0	0.0
30-34	0.6	0.6	0.6	0	0	0.8	6.5	0.0	0.0	1.8	0.0	0.0	0.0	0.0	0.0	0.0	0.0	0.0
35-39	0.3	0.0	0.6	0	0	0	6.4	11.3	0.0	0.0	0.0	0.0	0.0	0.0	0.0	0.0	0.0	0.0
40-44	0.3	0.6	0.0	0	0	0	0.0	12.4	0.0	2.4	4.4	0.0	0.0	0.0	0.0	0.0	0.0	0.0
45-49	0.3	0.7	0.0	0.4	0	0.8	0.0	0.0	0.0	0.0	0.0	0.0	0.0	0.0	0.0	0.0	0.0	0.0
50-54	0.0	0.0	0.0	0	0.9	0	0.0	0.0	0.0	0.0	0.0	0.0	0.0	0.0	0.0	0.0	0.0	0.0
55-59	0.0	0.0	0.0	0	0	0	0.0	0.0	0.0	0.0	0.0	0.0	0.0	0.0	0.0	0.0	0.0	0.0
60-65	0.0	0.0	0.0	0	0	0	0.0	0.0	0.0	0.0	0.0	0.0	0.0	0.0	0.0	0.0	0.0	0.0
65+	0.0	0.0	0.0	0	0	0	0.0	0.0	0.0	0.0	0.0	0.0	0.0	0.0	0.0	0.0	0.0	0.0
TOTAL	0.2	0.3	0.1	0.1	0.1	0.1	2.8	3.3	2.4	0.3	0.6	0.0	0.0	0.0	0.0	0.0	0.0	0.0
0-9	0.0	0.0	0.0	0.0	0.0	0.0	0.0	0.0	0.0	0.0	0.0	0.0	0.0	0.0	0.0	0.0	0.0	0.0
10-14	0.0	0.0	0.0	0.0	0.0	0.0	0.0	0.0	0.0	0.0	0.0	0.0	0.0	0.0	0.0	0.0	0.0	0.0
15-19	0.0	0.0	0.0	0.0	0.0	0.0	0.0	13.9	0.0	0.0	0.0	0.0	0.0	0.0	0.0	0.0	0.0	0.0
20-24	1.0	0.6	1.4	0.0	0.0	0.0	0.0	0.0	15.3	1.5	2.6	0.0	0.0	0.0	0.0	0.0	0.0	0.0
25-29	0.0	0.0	0.0	0.0	0.0	0.0	0.0	0.0	0.0	0.0	0.0	0.0	0.0	0.0	0.0	0.0	0.0	0.0
30-34	0.9	0.0	1.9	0.0	0.0	0.0	0.0	0.0	0.0	0.0	0.0	0.0	0.0	0.0	0.0	0.0	0.0	0.0
35-39	0.3	0.5	0.0	1.4	0.7	0.0	11.2	0.0	0.0	0.0	0.0	0.0	0.0	0.0	0.0	0.0	0.0	0.0
40-44	0.6	1.1	0.0	0.0	0.0	0.0	12.1	0.0	0.0	2.3	4.4	0.0	0.0	0.0	0.0	0.0	0.0	0.0
45-49	0.3	0.0	0.6	0.0	0.0	0.0	0.0	0.0	0.0	0.0	0.0	0.0	0.0	0.0	0.0	0.0	0.0	0.0
50-54	0.4	0.7	0.0	0.0	0.0	0.0	0.0	0.0	0.0	0.0	0.0	0.0	0.0	0.0	0.0	0.0	0.0	0.0
55-59	0.0	0.0	0.0	0.0	0.0	0.0	0.0	0.0	0.0	0.0	0.0	0.0	0.0	0.0	0.0	0.0	0.0	0.0
60-65	0.0	0.0	0.0	0.0	0.0	0.0	0.0	0.0	0.0	0.0	0.0	0.0	0.0	0.0	0.0	0.0	0.0	0.0
65+	0.0	0.0	0.0	0.0	0.0	0.0	0.0	0.0	0.0	0.0	0.0	0.0	0.0	0.0	0.0	0.0	0.0	0.0
TOTAL	0.3	0.2	0.3	0.1	0.1	0.2	1.7	2.1	1.2	0.3	0.6	0.0	0.0	0.0	0.0	0.0	0.0	0.0
0-9	0.0	0.0	0.0	0.0	0.0	0.0	0.0	0.0	0.0	0.0	0.0	0.0	0.0	0.0	0.0	0.0	0.0	0.0
10-14	0.0	0.0	0.0	0.0	0.0	0.0	0.0	0.0	0.0	0.0	0.0	0.0	0.0	0.0	0.0	0.0	0.0	0.0
15-19	0.3	0.0	0.7	0.0	0.0	0.0	6.7	0.0	13.9	0.0	0.0	0.0	0.0	0.0	0.0	0.0	0.0	0.0
20-24	0.0	0.0	0.0	0.0	0.0	0.0	0.0	0.0	0.0	0.0	0.0	0.0	0.0	0.0	0.0	0.0	0.0	0.0
25-29	0.3	0.0	0.6	0.0	0.0	0.0	0.0	0.0	0.0	1.5	0.0	3.3	0.0	0.0	0.0	0.0	0.0	0.0
30-34	0.9	1.2	0.6	0.0	0.0	0.0	0.0	0.0	0.0	5.1	6.2	3.8	0.0	0.0	0.0	0.0	0.0	0.0
35-39	1.1	1.6	0.6	1.1	1.4	0.7	6.1	11.2	0.0	0.0	0.0	0.0	0.0	0.0	0.0	0.0	0.0	0.0
40-44	0.5	1.1	0.0	0.0	0.0	0.0	6.5	12.1	0.0	0.0	0.0	0.0	0.0	0.0	18.2	37.2	0.0	0.0
45-49	0.0	0.0	0.0	0.0	0.0	0.0	0.0	0.0	0.0	0.0	0.0	0.0	0.0	0.0	0.0	0.0	0.0	0.0
50-54	0.0	0.0	0.0	0.0	0.0	0.0	0.0	0.0	0.0	0.0	0.0	0.0	0.0	0.0	0.0	0.0	0.0	0.0
55-59	0.5	1.0	0.0	0.0	0.0	0.0	0.0	0.0	0.0	5.2	10.5	0.0	0.0	0.0	0.0	0.0	0.0	0.0
60-65	0.0	0.0	0.0	0.0	0.0	0.0	0.0	0.0	0.0	0.0	0.0	0.0	0.0	0.0	0.0	0.0	0.0	0.0
65+	0.0	0.0	0.0	0.0	0.0	0.0	0.0	0.0	0.0	0.0	0.0	0.0	0.0	0.0	0.0	0.0	0.0	0.0
TOTAL	0.3	0.4	0.2	0.1	0.1	0.1	1.6	2.1	1.1	0.7	0.8	0.6	0.0	0.0	1.5	3.0	0.0	0.0
0-9	0.0	0.0	0.0	0.0	0.0	0.0	0.0	0.0	0.0	0.0	0.0	0.0	0.0	0.0	0.0	0.0	0.0	0.0
10-14	0.0	0.0	0.0	0.0	0.0	0.0	0.0	0.0	0.0	0.0	0.0	0.0	0.0	0.0	0.0	0.0	0.0	0.0
15-19	0.0	0.0	0.0	0.0	0.0	0.0	0.0	0.0	0.0	0.0	0.0	0.0	0.0	0.0	0.0	0.0	0.0	0.0
20-24	0.3	0.0	0.7	0.0	0.0	0.0	0.0	0.0	0.0	1.3	0.0	3.0	0.0	0.0	0.0	0.0	0.0	0.0
25-29	1.2	2.3	0.0	0.9	1.7	0.0	6.7	12.4	0.0	1.5	2.6	0.0	0.0	0.0	0.0	0.0	0.0	0.0
30-34	1.2	2.2	0.0	0.4	0.8	0.0	6.5	11.8	0.0	3.2	5.9	0.0	0.0	0.0	0.0	0.0	0.0	0.0
35-39	1.1	2.2	0.0	1.1	2.2	0.0	0.0	0.0	0.0	1.9	3.5	0.0	0.0	0.0	0.0	0.0	0.0	0.0
40-44	1.1	1.6	0.5	1.0	2.0	0.0	0.0	0.0	0.0	0.0	0.0	0.0	0.0	0.0	0.0	0.0	0.0	0.0
45-49	1.1	1.7	0.6	1.4	2.1	0.7	0.0	0.0	0.0	0.0	0.0	0.0	0.0	0.0	0.0	0.0	0.0	0.0
50-54	0.3	0.7	0.0	0.0	0.0	0.0	10.8	20.5	0.0	0.0	0.0	0.0	0.0	0.0	0.0	0.0	0.0	0.0
55-59	0.0	0.0	0.0	0.0	0.0	0.0	0.0	0.0	0.0	0.0	0.0	0.0	0.0	0.0	0.0	0.0	0.0	0.0
60-65	0.0	0.0	0.0	0.0	0.0	0.0	0.0	0.0	0.0	0.0	0.0	0.0	0.0	0.0	0.0	0.0	0.0	0.0
65+	0.0	0.0	0.0	0.0	0.0	0.0	0.0	0.0	0.0	0.0	0.0	0.0	0.0	0.0	0.0	0.0	0.0	0.0
TOTAL	0.5	0.8	0.1	0.4	0.7	0.1	1.6	3.0	0.0	0.7	1.1	0.3	0.0	0.0	0.0	0.0	0.0	0.0
0-9	0.0	0.0	0.0	0.0	0.0	0.0	0.0	0.0	0.0	0.0	0.0	0.0	0.0	0.0	0.0	0.0	0.0	0.0
10-14	0.0	0.0	0.0	0.0	0.0	0.0	0.0	0.0	0.0	0.0	0.0	0.0	0.0	0.0	0.0	0.0	0.0	0.0
15-19	0.3	0.0	0.6	0.0	0.0	0.0	0.0	0.0	0.0	1.8	0.0	3.7	0.0	0.0	0.0	0.0	0.0	0.0
20-24	1.3	2.4	0.0	0.5	0.9	0.0	6.9	13.0	0.0	1.3	2.3	0.0	9.7	19.1	0.0	0.0	0.0	0.0
25-29	1.2	2.3	0.0	0.9	1.7	0.0	0.0	0.0	0.0	2.9	5.2	0.0	0.0	0.0	0.0	0.0	0.0	0.0
30-34	2.8	5.4	0.0	2.3	4.5	0.0	0.0	0.0	0.0	3.2	5.7	0.0	0.0	0.0	0.0	0.0	0.0	0.0
35-39	5.6	10.4	0.6	4.8	9.5	0.0	24.5	33.5	13.6	5.7	10.7	0.0	0.0	0.0	0.0	0.0	0.0	0.0
40-44	3.1	6.2	0.0	3.9	7.8	0.0	0.0	0.0	0.0	0.0	0.0	0.0	0.0	0.0	0.0	0.0	0.0	0.0
45-49	0.8	1.7	0.0	1.0	2.0	0.0	0.0	0.0	0.0	0.0	0.0	0.0	0.0	0.0	0.0	0.0	0.0	0.0
50-54	2.2	4.5	0.0	2.0	3.9	0.0	10.5	19.8	0.0	2.8	5.6	0.0	0.0	0.0	0.0	0.0	0.0	0.0
55-59	0.9	1.8	0.0	1.0	2.1	0.0	0.0	0.0	0.0	0.0	0.0	0.0	0.0	0.0	0.0	0.0	0.0	0.0
60-65	0.0	0.0	0.0	0.0	0.0	0.0	0.0	0.0	0.0	0.0	0.0	0.0	0.0	0.0	0.0	0.0	0.0	0.0
65+	0.2	0.5	0.0	0.0	0.0	0.0	9.1	21.2	0.0	0.0	0.0	0.0	0.0	0.0	0.0	0.0	0.0	0.0
TOTAL	1.4	2.7	0.1	1.3	2.6	0.0	3.6	6.0	1.1	1.4	2.4	0.3	0.8	1.7	0.0	0.0	0.0	0.0

**Table 25: Early latent syphilis—Reported cases and rates by county/region listed in alphabetical order: Colorado, 1999-2003**

County	Cases					Rate				
	1999	2000	2001	2002	2003	1999	2000	2001	2002	2003
Adams	0	2	2	2	3	0.0	0.5	0.5	0.5	0.8
Alamosa	0	0	0	0	0	0.0	0.0	0.0	0.0	0.0
Arapahoe	1	2	3	2	2	0.2	0.4	0.6	0.4	0.4
Archuleta	0	0	0	0	0	0.0	0.0	0.0	0.0	0.0
Baca	0	0	0	0	0	0.0	0.0	0.0	0.0	0.0
Bent	0	0	0	0	0	0.0	0.0	0.0	0.0	0.0
Boulder	0	0	0	0	3	0.0	0.0	0.0	0.0	1.1
Broomfield	0	0	0	0	0	0.0	0.0	0.0	0.0	0.0
Chaffee	0	1	0	0	0	0.0	6.1	0.0	0.0	0.0
Cheyenne	0	0	0	0	0	0.0	0.0	0.0	0.0	0.0
Clear Creek	0	0	0	0	0	0.0	0.0	0.0	0.0	0.0
Conejos	0	0	0	0	0	0.0	0.0	0.0	0.0	0.0
Costilla	0	0	0	0	0	0.0	0.0	0.0	0.0	0.0
Crowley	0	0	0	0	0	0.0	0.0	0.0	0.0	0.0
Custer	0	0	0	0	0	0.0	0.0	0.0	0.0	0.0
Delta	0	0	0	0	0	0.0	0.0	0.0	0.0	0.0
Denver	3	2	6	12	12	0.5	0.4	1.1	2.1	2.1
Dolores	0	0	0	0	0	0.0	0.0	0.0	0.0	0.0
Douglas	0	0	0	0	0	0.0	0.0	0.0	0.0	0.0
Eagle	0	0	0	0	0	0.0	0.0	0.0	0.0	0.0
El Paso	0	0	1	1	1	0.0	0.0	0.2	0.2	0.2
Elbert	0	0	0	0	0	0.0	0.0	0.0	0.0	0.0
Fremont	0	0	1	0	0	0.0	0.0	2.1	0.0	0.0
Garfield	0	0	0	0	0	0.0	0.0	0.0	0.0	0.0
Gilpin	0	0	0	0	0	0.0	0.0	0.0	0.0	0.0
Grand	0	0	0	0	0	0.0	0.0	0.0	0.0	0.0
Gunnison	0	0	0	0	0	0.0	0.0	0.0	0.0	0.0
Hinsdale	0	0	0	0	0	0.0	0.0	0.0	0.0	0.0
Huerfano	0	0	0	0	0	0.0	0.0	0.0	0.0	0.0
Jackson	0	0	0	0	0	0.0	0.0	0.0	0.0	0.0
Jefferson	1	0	0	3	1	0.2	0.0	0.0	0.6	0.2
Kiowa	0	0	0	0	0	0.0	0.0	0.0	0.0	0.0
Kit Carson	0	0	0	0	0	0.0	0.0	0.0	0.0	0.0
La Plata	0	0	0	0	0	0.0	0.0	0.0	0.0	0.0
Lake	0	0	0	0	0	0.0	0.0	0.0	0.0	0.0
Larimer	0	0	0	1	0	0.0	0.0	0.0	0.4	0.0
Las Animas	0	0	0	0	0	0.0	0.0	0.0	0.0	0.0
Lincoln	0	0	0	0	0	0.0	0.0	0.0	0.0	0.0
Logan	0	0	0	0	0	0.0	0.0	0.0	0.0	0.0
Mesa	0	0	0	0	0	0.0	0.0	0.0	0.0	0.0
Mineral	0	0	0	0	0	0.0	0.0	0.0	0.0	0.0
Moffat	0	0	0	0	0	0.0	0.0	0.0	0.0	0.0

**Table 25: Early latent syphilis—Reported cases and rates by county/region listed in alphabetical order: Colorado, 1999-2003 (continued)**

County	Cases					Rate				
	1999	2000	2001	2002	2003	1999	2000	2001	2002	2003
Montezuma	0	0	0	0	0	0.0	0.0	0.0	0.0	0.0
Montrose	0	0	0	0	0	0.0	0.0	0.0	0.0	0.0
Morgan	0	0	0	0	0	0.0	0.0	0.0	0.0	0.0
Otero	0	0	0	0	0	0.0	0.0	0.0	0.0	0.0
Ouray	0	0	0	0	0	0.0	0.0	0.0	0.0	0.0
Park	0	0	0	0	0	0.0	0.0	0.0	0.0	0.0
Phillips	0	0	0	0	0	0.0	0.0	0.0	0.0	0.0
Pitkin	0	0	0	0	0	0.0	0.0	0.0	0.0	0.0
Prowers	0	0	0	0	0	0.0	0.0	0.0	0.0	0.0
Pueblo	1	0	0	0	0	0.7	0.0	0.0	0.0	0.0
Rio Blanco	0	0	0	0	0	0.0	0.0	0.0	0.0	0.0
Rio Grande	0	0	0	0	0	0.0	0.0	0.0	0.0	0.0
Routt	0	0	0	0	0	0.0	0.0	0.0	0.0	0.0
Saguache	0	0	0	0	0	0.0	0.0	0.0	0.0	0.0
San Juan	0	0	0	0	0	0.0	0.0	0.0	0.0	0.0
San Miguel	0	0	0	0	0	0.0	0.0	0.0	0.0	0.0
Sedgwick	0	0	0	0	0	0.0	0.0	0.0	0.0	0.0
Summit	0	0	0	0	0	0.0	0.0	0.0	0.0	0.0
Teller	0	0	0	0	0	0.0	0.0	0.0	0.0	0.0
Washington	0	0	0	0	0	0.0	0.0	0.0	0.0	0.0
Weld	0	4	0	1	0	0.0	2.2	0.0	0.5	0.0
Yuma	0	0	0	0	0	0.0	0.0	0.0	0.0	0.0
Colorado Total	6	11	13	22	22	0.1	0.3	0.3	0.5	0.5
Non-Denver Metro	1	5	2	3	4	0.0	0.2	0.1	0.1	0.2
Denver Metro	5	6	11	19	18	0.2	0.3	0.5	0.9	0.8

**Table 26: Late and late latent syphilis—Reported cases and rates by county/region listed in alphabetical order: Colorado, 1999-2003**

County	Cases					Rate				
	1999	2000	2001	2002	2003	1999	2000	2001	2002	2003
Adams	6	3	8	11	8	1.7	0.8	2.1	2.9	2.1
Alamosa	0	0	1	0	0	0.0	0.0	6.5	0.0	0.0
Arapahoe	8	8	20	12	14	1.7	1.6	4.0	2.3	2.7
Archuleta	0	0	0	0	0	0.0	0.0	0.0	0.0	0.0
Baca	0	0	0	0	0	0.0	0.0	0.0	0.0	0.0
Bent	0	0	0	0	1	0.0	0.0	0.0	0.0	15.6
Boulder	0	1	2	1	2	0.0	0.3	0.7	0.4	0.7
Broomfield	0	0	0	0	0	0.0	0.0	0.0	0.0	0.0
Chaffee	0	0	1	0	0	0.0	0.0	6.1	0.0	0.0
Cheyenne	0	0	0	0	0	0.0	0.0	0.0	0.0	0.0
Clear Creek	0	0	0	0	0	0.0	0.0	0.0	0.0	0.0
Conejos	0	0	0	0	0	0.0	0.0	0.0	0.0	0.0
Costilla	0	0	0	0	0	0.0	0.0	0.0	0.0	0.0
Crowley	1	2	1	0	1	20.0	36.2	18.2	0.0	17.2
Custer	0	0	0	0	0	0.0	0.0	0.0	0.0	0.0
Delta	2	0	0	0	0	7.3	0.0	0.0	0.0	0.0
Denver	35	17	42	34	38	6.4	3.1	7.5	6.1	6.7
Dolores	0	0	0	0	0	0.0	0.0	0.0	0.0	0.0
Douglas	0	1	1	2	4	0.0	0.6	0.5	0.9	1.8
Eagle	0	0	2	0	1	0.0	0.0	4.5	0.0	2.1
El Paso	9	3	7	2	7	1.8	0.6	1.3	0.4	1.3
Elbert	0	0	0	0	0	0.0	0.0	0.0	0.0	0.0
Fremont	1	2	2	2	1	2.2	4.3	4.2	4.2	2.1
Garfield	0	2	0	0	1	0.0	4.5	0.0	0.0	2.1
Gilpin	0	0	0	0	0	0.0	0.0	0.0	0.0	0.0
Grand	0	0	0	0	0	0.0	0.0	0.0	0.0	0.0
Gunnison	0	0	0	0	0	0.0	0.0	0.0	0.0	0.0
Hinsdale	0	0	0	0	0	0.0	0.0	0.0	0.0	0.0
Huerfano	0	0	0	1	0	0.0	0.0	0.0	12.5	0.0
Jackson	0	0	0	0	0	0.0	0.0	0.0	0.0	0.0
Jefferson	5	2	4	4	6	1.0	0.4	0.8	0.8	1.1
Kiowa	0	0	0	0	0	0.0	0.0	0.0	0.0	0.0
Kit Carson	0	0	0	0	0	0.0	0.0	0.0	0.0	0.0
La Plata	0	0	0	1	0	0.0	0.0	0.0	2.2	0.0
Lake	0	0	0	0	0	0.0	0.0	0.0	0.0	0.0
Larimer	1	0	7	3	2	0.4	0.0	2.7	1.1	0.8
Las Animas	0	0	0	0	0	0.0	0.0	0.0	0.0	0.0
Lincoln	0	0	0	0	0	0.0	0.0	0.0	0.0	0.0
Logan	0	0	0	0	0	0.0	0.0	0.0	0.0	0.0
Mesa	0	2	0	2	1	0.0	1.7	0.0	1.6	0.8
Mineral	0	0	0	0	0	0.0	0.0	0.0	0.0	0.0
Moffat	0	1	0	0	0	0.0	7.6	0.0	0.0	0.0

**Table 26: Late and late latent syphilis—Reported cases and rates by county/region listed in alphabetical order: Colorado, 1999-2003 (continued)**

County	Cases					Rate				
	1999	2000	2001	2002	2003	1999	2000	2001	2002	2003
Montezuma	1	0	0	0	0	4.3	0.0	0.0	0.0	0.0
Montrose	0	0	0	1	0	0.0	0.0	0.0	2.8	0.0
Morgan	0	0	2	1	0	0.0	0.0	7.2	3.6	0.0
Otero	0	0	0	1	0	0.0	0.0	0.0	5.1	0.0
Ouray	0	0	0	0	0	0.0	0.0	0.0	0.0	0.0
Park	0	0	0	0	0	0.0	0.0	0.0	0.0	0.0
Phillips	0	0	0	0	0	0.0	0.0	0.0	0.0	0.0
Pitkin	0	0	0	0	0	0.0	0.0	0.0	0.0	0.0
Prowers	1	0	0	0	0	7.0	0.0	0.0	0.0	0.0
Pueblo	0	2	1	0	0	0.0	1.4	0.7	0.0	0.0
Rio Blanco	0	0	0	0	0	0.0	0.0	0.0	0.0	0.0
Rio Grande	1	0	0	0	0	8.1	0.0	0.0	0.0	0.0
Routt	0	0	0	0	0	0.0	0.0	0.0	0.0	0.0
Saguache	0	0	0	0	0	0.0	0.0	0.0	0.0	0.0
San Juan	0	0	0	0	0	0.0	0.0	0.0	0.0	0.0
San Miguel	0	0	0	0	1	0.0	0.0	0.0	0.0	13.9
Sedgwick	0	0	0	0	0	0.0	0.0	0.0	0.0	0.0
Summit	0	0	1	0	3	0.0	0.0	3.8	0.0	11.1
Teller	0	0	0	0	1	0.0	0.0	0.0	0.0	4.5
Unknown	0	0	1	0	0	0.0	0.0	0.0	0.0	0.0
Washington	0	0	0	1	0	0.0	0.0	0.0	19.7	0.0
Weld	2	2	3	5	3	1.1	1.1	1.5	2.5	1.4
Yuma	0	1	1	0	0	0.0	10.1	10.1	0.0	0.0
Colorado Total	73	49	107	84	95	1.7	1.1	2.4	1.9	2.1
Non-Denver Metro	19	18	32	21	25	0.9	0.8	1.4	0.9	1.1
Denver Metro	54	31	75	63	70	2.6	1.5	3.5	2.9	3.1

## **V. Sources and Limitations of the Data**

Chlamydia is a condition that is reportable by laboratories in Colorado. Voluntary care provider reports of positive diagnostic tests are used to obtain case reports (including treatment). Population data used to calculate rates are 2002 U.S. Census data and estimates from the Demography Section, Colorado Department of Local Government.

Primary and secondary (and early latent) syphilis cases are reportable in Colorado by health care providers; positive serologic tests for syphilis (STS) are reportable by laboratories. Syphilis surveillance data are compiled from case reports submitted by health care providers and health department disease intervention specialists (DIS). When positive STS are reported, physicians and patients are contacted by a DIS who confirms the diagnosis, determines the stage of syphilis, ensures adequate treatment, and performs partner notification. Population data used to calculate rates are 2003 census data from the Demography Section, Colorado Division of Local Government.

Gonorrhea is a condition that is reportable by both health care providers and laboratories in Colorado and data are compiled from reports submitted by both these sources. Laboratory reports of positive diagnostic tests are used to obtain complete case reports (including treatment) from health care providers. Population data used to calculate rates are 2003 census data from the Demography Section, Colorado Division of Local Government.

All required disease reports made to state or local health departments are strictly confidential. Statutes and regulations address the release of personal identifying information as well as surveillance data. Data in this report is formatted to comply with Colorado Department of Public Health and Environment policy regarding release of medical and epidemiological information in a manner such that no individual person can be identified.

Rate calculations vary because of small differences in population estimates provided by the Demography Section, Colorado Division of Local Government. The data includes number of cases as of November 2003 and may differ from earlier or later reports. Race and ethnicity comparisons are limited because of the substantial proportion of cases reported with no race/ethnicity information. The tables below detail the percentage of cases with missing race and ethnicity information for all time periods covered in this report (1990 - 2003) and for 2003.



**Percent missing race and ethnicity information by disease, Colorado, 1990 - 2003**

	<b>Chlamydia</b>	<b>Gonorrhea</b>	<b>Syphilis</b>
<b>Race</b>	61.84	28.38	33.02
<b>Ethnicity</b>	68.91	60.44	38.07

**Percent missing race and ethnicity information by disease, Colorado, 2003**

	<b>Chlamydia</b>	<b>Gonorrhea</b>	<b>Syphilis</b>
<b>Race</b>	64.95	43.35	22.46
<b>Ethnicity</b>	70.81	63.29	36.23

Rates for the ethnic group Hispanic are limited because the Demography Section, Colorado Division of Local Government, estimates the size of the population of White Hispanics while the case counts may include Hispanics of other races. Conversely, the Demography Section, Colorado Division of Local Government, estimates the population sizes of other racial groups regardless of ethnicity, while the case count only includes Non-Hispanics of other races. Gender comparisons are limited because men are often treated for STDs without being tested and/or reported.

Rates based on small numbers of cases should be interpreted with caution. Rates based on fewer than 20 cases may be unstable and fluctuate from year to year.