

Fact Book

Academic Year 2016-2017



Office of Institutional Research

November 2017

Table of Contents

CCCS MISSION AND GOALS	4
SYSTEM HIGHLIGHTS.....	5
INTRODUCTION	6
SUMMARY DATA – FALL 2016 AND ANNUAL 2016-17	7
DEMOGRAPHICS	9
HEADCOUNT AND FTE BY COLLEGE: 2016-17	9
ANNUAL HEADCOUNT ENROLLMENT: 2007-08 AND 2012-13 TO 2016-17	10
ANNUAL FTE ENROLLMENT: 2007-08 AND 2012-13 TO 2016-17	11
HEADCOUNT TUITION RESIDENCY BY TYPE AND BY COLLEGE: 2016-17	12
FTE TUITION RESIDENCY BY TYPE AND BY COLLEGE: 2016-17	12
FALL HEADCOUNT ENROLLMENT: 2012 TO 2016.....	13
FALL FTE ENROLLMENT: 2012 TO 2016	13
HEADCOUNT BY FULL AND PART-TIME STATUS BY COLLEGE: 2016-17.....	14
PERCENTAGE OF HEADCOUNT BY RACE/ETHNICITY BY COLLEGE: 2016-17	15
PERCENTAGE POINT CHANGE IN PROPORTION OF STUDENTS BY RACE/ETHNICITY: 2013 TO 2017	16
CCCS PROPORTION OF STUDENTS BY RACE/ETHNICITY, 2013 AND 2017	16
PERCENT OF HEADCOUNT BY AGE GROUP BY COLLEGE: 2016-17	17
PERCENTAGE POINT CHANGE IN PROPORTION OF STUDENTS BY AGE GROUP, 2013 TO 2017	18
CCCS PROPORTION OF STUDENTS BY AGE GROUP, 2013 AND 2017.....	18
HEADCOUNT BY GENDER BY COLLEGE: 2016-17.....	19
HEADCOUNT OF MILITARY-RELATED STUDENTS: 2016-17*	20
HEADCOUNT BY DEGREE-SEEKING TYPE BY COLLEGE: 2016-17	21
PARENTAL EDUCATION LEVEL AND FIRST GENERATION STUDENTS.....	22
RETENTION	23
FALL-TO-FALL FULL- AND PART-TIME RETENTION TRENDS BY COLLEGE.....	23
RETENTION RATE OF FIRST-TIME, DEGREE/CERTIFICATE SEEKING STUDENTS.....	24
COURSE COMPLETION RATES	25
COURSE COMPLETION RATES OVERALL AND BY SPECIFIED DEMOGRAPHIC GROUPS, BY COLLEGE	25
CCCS COURSE COMPLETION RATES BY DEMOGRAPHIC GROUP, 2015 - 2017	26
2017 COURSE COMPLETION RATES BY DEMOGRAPHIC GROUP, BY COLLEGE	26
CREDENTIALS	27
CREDENTIALS AWARDED BY TYPE OF AWARD: 2016-17	27
CREDENTIALS AWARDED BY TYPE OF CREDENTIAL BY COLLEGE: 2016-17	28
CREDENTIALS AWARDED BY CREDENTIAL LEVEL BY COLLEGE: 2015 – 2017	29
CREDENTIALS AWARDED BY COLLEGE: 2012-13 THROUGH 2016-17	30
TOP CAREER-ORIENTED CREDENTIAL PROGRAM BY COLLEGE: 2016-17	31
TOP CAREER-ORIENTED CREDENTIAL PROGRAMS FOR CCCS BY TYPE OF CREDENTIAL: 2016-17.....	31
DEGREES WITH DESIGNATION AWARDED: 2012-13 THROUGH 2016-17	32

TRANSFERS	33
STUDENT TRANSFERS AND TOP TRANSFER DESTINATIONS, INCLUDING HIGH SCHOOL STUDENTS	33
STUDENT TRANSFERS AND TOP TRANSFER DESTINATIONS, EXCLUDING HIGH SCHOOL STUDENTS.....	34
TOP FIVE FOUR-YEAR TRANSFER DESTINATIONS.....	34
TRANSFERS TO COLORADO FOUR-YEAR INSTITUTIONS: FALL 2015 TO FALL 2016	36
TOP FIVE FOUR-YEAR PRIVATE TRANSFER DESTINATIONS.....	37
NUMBER OF STUDENTS TRANSFERRING WITH FIFTEEN OR MORE CREDIT HOURS, 2014 - 2016.....	37
FALL 2015 & 2016 TRANSFERS WITH 15 OR MORE CREDITS, OVERALL AND BY DEMOGRAPHIC GROUP	38
FALL 2015 AND 2016 TRANSFER RATES, OVERALL AND SPECIFIED DEMOGRAPHIC GROUP, BY COLLEGE	38
COMPARISON OF FALL 2015 AND FALL 2016 CCCS TRANSFER RATES BY DEMOGRAPHIC GROUPINGS.....	39
GRADUATION RATES.....	40
THREE-YEAR GRADUATION RATE.....	40
THREE-YEAR GRADUATION RATE TRENDS	41
THREE-YEAR GRADUATION RATE TRENDS: STUDENTS OF COLOR.....	42
DEVELOPMENTAL EDUCATION.....	43
DEVELOPMENTAL COURSE COMPLETION RATES BY SUBJECT	43
DEVELOPMENTAL COURSE COMPLETION RATES BY STUDENT DEMOGRAPHIC	44
DEVELOPMENTAL EDUCATION COURSE COMPLETION RATES BY COLLEGE – ALL SUBJECTS	45
PERCENT OF STUDENTS ENROLLED IN DEVELOPMENTAL COURSES BY COLLEGE	45
PERCENT OF FTE STUDENTS ENROLLED IN DEVELOPMENTAL COURSES BY COLLEGE.....	46
CONCURRENT ENROLLMENT.....	47
HIGH SCHOOL STUDENTS ATTENDING CCCS COLLEGES BY COLLEGE.....	47
CCCS HIGH SCHOOL STUDENTS COMPARED TO PUBLIC HIGH SCHOOL STUDENTS	48
RACE/ETHNICITY OF CCCS HIGH SCHOOL STUDENTS BY COLLEGE, AY 2016-17	48
COMPARISON OF RACE/ETHNICITY OF CCCS AND PUBLIC HIGH SCHOOL STUDENTS, AY 2016-17	49
CCCS HIGH SCHOOL STUDENTS BY AGE, AY 2016-17	49
END-OF-TERM COMPLETION STATUS FOR HIGH SCHOOL STUDENTS.....	50
NUMBER OF CREDENTIALS AWARDED TO CCCS HIGH SCHOOL STUDENTS, AY 2016-17	50
CCCS HIGH SCHOOL STUDENT ENROLLMENTS IN FOUR-YEAR COLLEGES IN FALL 2016	51
CCCS HIGH SCHOOL STUDENT ENROLLMENT IN CCCS COLLEGE IN SUCCEEDING YEAR	51
INSTRUCTIONAL DELIVERY METHODS.....	52
CCCS COURSE ENROLLMENTS BY COURSE DELIVERY METHOD, 2015 THROUGH 2017	52
CCCS COURSE OFFERINGS BY COURSE DELIVERY METHOD, 2015 THROUGH 2017	52
PROPORTION OF ONLINE AND HYBRID COURSE ENROLLMENTS, 2015 THROUGH 2017	53
PROPORTION OF FTE IN ONLINE AND HYBRID COURSES, 2015 THROUGH 2017	53
FACULTY	54
PROPORTION OF CREDIT HOURS TAUGHT BY STAFF CLASSIFICATION: 2016-17	54
FINANCIAL AID.....	55
TOTAL FINANCIAL AID AND AVERAGE AID PER RECIPIENT, 2009 THROUGH 2017.....	55
TOTAL PELL GRANTS AWARDED, 2010 THROUGH 2017.....	56

TOTAL PELL RECIPIENTS AND AVERAGE AWARD PER RECIPIENT, 2010 THROUGH 2017	56
NUMBER OF PELL RECIPIENTS BY COLLEGE, 2014 THROUGH 2017	57
AVERAGE PELL AWARD PER RECIPIENT BY COLLEGE, 2014 THROUGH 2017	58
TOTAL OF COLORADO STUDENT GRANTS AWARDED, 2010 THROUGH 2017	59
TOTAL COLORADO STUDENT GRANT RECIPIENTS AND AVERAGE AWARD PER RECIPIENT, 2010 – 2017	59
TOTAL OF STAFFORD SUBSIDIZED LOANS AWARDED, 2010 THROUGH 2017	60
SUBSIDIZED STAFFORD LOAN RECIPIENTS AND AVERAGE LOAN PER RECIPIENT, 2010 – 2017	60
TOTAL OF STAFFORD UNSUBSIDIZED LOANS AWARDED, 2010 THROUGH 2017	61
UNSUBSIDIZED STAFFORD LOAN RECIPIENTS AND AVERAGE LOAN PER RECIPIENT, 2010 – 2017	61
TOTAL STAFFORD LOANS AWARDED, 2010 THROUGH 2017	62
UNIQUE STAFFORD LOAN RECIPIENTS AND AVERAGE LOAN PER RECIPIENT, 2010 – 2017	62
TOTAL FEDERAL AND STATE WORK STUDY AWARDED, 2010 THROUGH 2017	63
UNIQUE FEDERAL/ STATE WORK STUDY RECIPIENTS AND AVG AMOUNT PER RECIPIENT, 2010 - 2017	63
SOURCES OF STUDENT FINANCIAL AID BY COLLEGE, 2016-17	64
FINANCIAL RESOURCES FROM OUTSIDE SOURCES	65
PUBLIC AND PRIVATE FUNDRAISING, 2016	65
GLOSSARY OF TERMS.....	66

CCCS Mission and Goals

Vision

Colorado community colleges are unsurpassed at providing quality educational opportunities for all who aspire to enrich their lives.

Mission

To provide an accessible, responsive learning environment that facilitates the achievement of educational, professional, and personal goals by our students and other members of our communities in an atmosphere that embraces academic excellence, diversity, and innovation.

Strategic Goals

Transform the Student Experience

Design rigorous educational experiences, implement and scale-up student support mechanisms that overcome educational barriers, and set aside financial resources to fund innovative practices that foster student success.

Transform Our Own Workforce Experience

Develop a workforce that reflects student diversity; reward employee teamwork, innovation, and measurable outcomes; develop technology-based, best-practice repositories; support learning through professional development; and develop future leaders for CCCS institutions.

Create Education without Barriers through Transformational Partnerships

Expand partnerships with businesses, policymakers, and community and educational organizations; devise technology-supported and hybrid educational delivery solutions that transcend time and place barriers to student success; develop competency-based criteria to grant credit for prior experiences; and design experiential learning opportunities in all programs.

Redefine Our Value Proposition through Accessibility, Affordability, Quality, Accountability, Resource Development, and Operational Excellence

Develop system-wide capacity in institutional research and data analytics to support a culture of inquiry, evidentiary decision-making, and student success; increase external resource development capacity to invest in scholarships and physical and technological resources; and promote the value of community colleges and of successful student outcomes.

System Highlights

This report provides data on enrollment, retention, degrees awarded, developmental education, high school (concurrent) enrollment, and financial aid for the thirteen colleges of the Colorado Community College System (CCCS). These thirteen colleges are:

Arapahoe Community College (ACC)	Northeastern Junior College (NJC)
Colorado Northwestern Community College (CNCC)	Otero Junior College (OJC)
Community College of Aurora (CCA)	Pikes Peak Community College (PPCC)
Community College of Denver (CCD)	Pueblo Community College (PCC)
Front Range Community College (FRCC)	Red Rocks Community College (RRCC)
Lamar Community College (LCC)	Trinidad State Junior College (TSJC)
Morgan Community College (MCC)	

- **Enrollment** – Across the system, annual unduplicated undergraduate enrollment decreased eight-tenths of a percent, from 120,635 to 119,724. Similarly, full-time equivalent enrollment (FTE) declined eight-tenths of a percent, from 50,246.7 to 49,861.6. In addition to the undergraduate population, CCCS trains more than 17,000 Coloradans each year through various other programs.
- **Credentials Awarded** - CCCS colleges awarded 20,893 credentials in AY 2016-17, an increase of 5.2 percent over the AY 2015-16 total of 19,864 credentials. The first bachelor of applied science degrees were awarded by a CCCS college, with CCD awarding four in dental hygiene.
- **Transfers** – 8,779 students, or 13.2 percent of the Fall 2015 cohort, transferred to a four-year college in Fall 2016. These statistics indicate an increase in both the number of students transferring (3.7 percent) and the proportion of the cohort who transferred (from 12 percent). Please note that these numbers reflect a change in the method of counting transfer students from prior years. When the previous method is taken into account, the transfer rate was 15 percent in Fall 2016.
- **High School Student Enrollment** – High school students attending CCCS colleges increased 11.6 percent, from 22,867 to 25,513. Over the last five years, the number of high school students attending CCCS colleges increased 52 percent, comprising 21.3 percent of total enrollment in 2016-17.
- **Student Diversity** – Students of color comprised 36.9 percent of the student population, an increase of two percentage points from last year.
- **Age of Students** –Thirty-nine percent of students are at least 25 years of age, while 44.6 percent are between the ages of 18 to 24, and the remaining students are under

age 18. The proportion of students aged 25 and older has decreased from 49 percent five and ten years ago.

- **Time Status** – Three-quarters of CCCS students attended college part time, although there are significant differences among colleges, with rural colleges tending to have higher proportions of full-time students.
- **Fall to Fall Retention** – The overall retention rate of full and part-time students from Fall 2015 to Fall 2016 increased from 48.6 percent to 50.3 percent. Retention rates stayed the same or increased in eight of the colleges.
- **Graduation Rate** - The graduation rate for first-time, full-time, degree-seeking students increased 1.6 percentage points from AY 2015-16, to 24 percent. Graduation rates increased in eight of the thirteen colleges. The graduation rate for students of color increased 3.4 percentage points, to 20.8 percent.
- **Developmental Education** - The proportion of students enrolled in developmental education courses, including supplemental academic instruction courses, dropped from 18 percent in AY 2015-16 to 17.2 percent in AY 2016-17, while the proportion of FTE dropped from 7.5 percent to 6.8 percent. The overall system developmental education completion rate was 70 percent, the same as last year.
- **Financial Aid** – About 31,000 CCCS students received a Pell grant in 2016-17, or about one-third of non-high school students. The average Pell award was \$2,913. About one-quarter of non-high school students received a Colorado Student Grant award, averaging \$1,578.

Introduction

This fact book provides various student data for the thirteen colleges of the Colorado Community College System (CCCS). It is intended to be a one-stop resource for information. The Office of Institutional Research at the system office produces this report. Additional information about some of the subjects in this document, as well as previous years' fact books, can be found at <https://www.cccs.edu/about-cccs/institutional-research/>.

The data in this report are in tabular and/or graphic format. Data are from the Colorado Student Unit Record Data System (SURDS) or other data reported to the Colorado Department of Higher Education (CDHE), the federal Integrated Postsecondary Education Data System (IPEDS), or the National Student Clearinghouse (NSC). As SURDS and other reports submitted to CDHE are the predominant sources of data, a data source is indicated only if they are not the data source.

A Glossary of Terms is included at the end of the document that provides additional descriptions and definitions to assist the reader.

Summary Data – Fall 2016 and Annual 2016-17

Data Element	Fall 2016	Fall 2016	Annual	Annual
<u>Enrollment Type</u>	<u>Headcount</u>	<u>FTE</u>	<u>Headcount</u>	<u>FTE</u>
Resident	74,643	21,139.8	109,791	46,855.9
Non-Resident	5,555	1,359.5	9,933	3,005.7
Total	80,198	22,499.3	119,724	49,861.6
<u>Demographics</u>	<u>Headcount</u>	<u>% of Total</u>	<u>Headcount</u>	<u>% of Total</u>
Students of Color	28,053	37.1%	41,448	36.9%
Female	45,075	56.4%	66,101	55.4%
Average Age	25		25	
<u>Enrollment Characteristics</u>	<u>Count</u>	<u>% of Total</u>	<u>Count</u>	<u>% of Total</u>
First Time Students	11,132	13.9%	16,424	13.7%
Transfer Students	8,962	11.2%	18,541	15.5%
Continuing Students	43,004	53.6%	59,246	49.5%
High School Students	17,100	21.3%	25,513	21.3%
Total	80,198	100.0%	119,724	100.0%
<u>Headcount by Degree Type</u>	<u>Count</u>	<u>% of Total</u>	<u>Count</u>	<u>% of Total</u>
Bachelor's Degree	44	0.1%	51	0.0%
Associate of Arts (AA)	19,122	23.8%	25,554	21.3%
Associate of Science (AS)	13,708	17.1%	19,038	15.9%
Associate of Applied Science (AAS)	19,599	24.4%	28,010	23.4%
Associate of General Studies (AGS)	9,214	11.5%	13,691	11.4%
Certificate	8,339	10.4%	14,449	12.1%
Non-degree/Unknown	10,172	12.7%	18,931	15.8%
Total	80,198	100.0%	119,724	100.0%
Average Class Size*	17		16	
<u>Degrees Awarded: 2016-17</u>	<u>Count</u>	<u>% of Total</u>		
BAS	4	0.0%		
AA	2,798	13.4%		
AS	966	4.6%		
AAS	2,869	13.7%		
AGS	1,606	7.7%		
2-yr Certificate	1,675	8.0%		
1-yr Certificate	10,975	52.5%		
Total	20,893	100.0%		

*Excludes online courses and courses with less than 6 enrollments.

<u>Outcomes</u>	<u>Headcount</u>	<u>% of Total</u>
Fall 2015 to Fall 2016 Retained or Completed (Full and Part Time; All Students)	40,147	50.3%
Three-Year Graduation Rate (Based on Fall 2013 cohort)	1,332	24.0%
Transfers to 4-year colleges in Fall 2016	8,779	13.2%
Course Completion Rate, All Courses		85.9%
Developmental Education Course Completion Rate		70.0%

Tuition: 2016-17**

Annual Full-time Resident Tuition	\$4,107	
Annual Full-time Non-Resident Tuition:		
ACC, CCA, CCD, FRCC, MCC, PCC, PPCC, RRCC	\$16,850	
CNCC, LCC, NJC,OJC, TSJC	\$7,032	

Flexibility

Percentage of courses offered online, hybrid, evenings, or weekend	50.7%
--	-------

Financial Aid 2016-17

Federal Revenue	\$208,847,989	75.5%
State Revenue	\$46,561,236	16.8%
Institutional Revenue	\$8,999,827	3.3%
Other Revenue	\$12,118,205	4.4%
Total Financial Aid	\$276,527,257	100.0%

Need-Based Grants

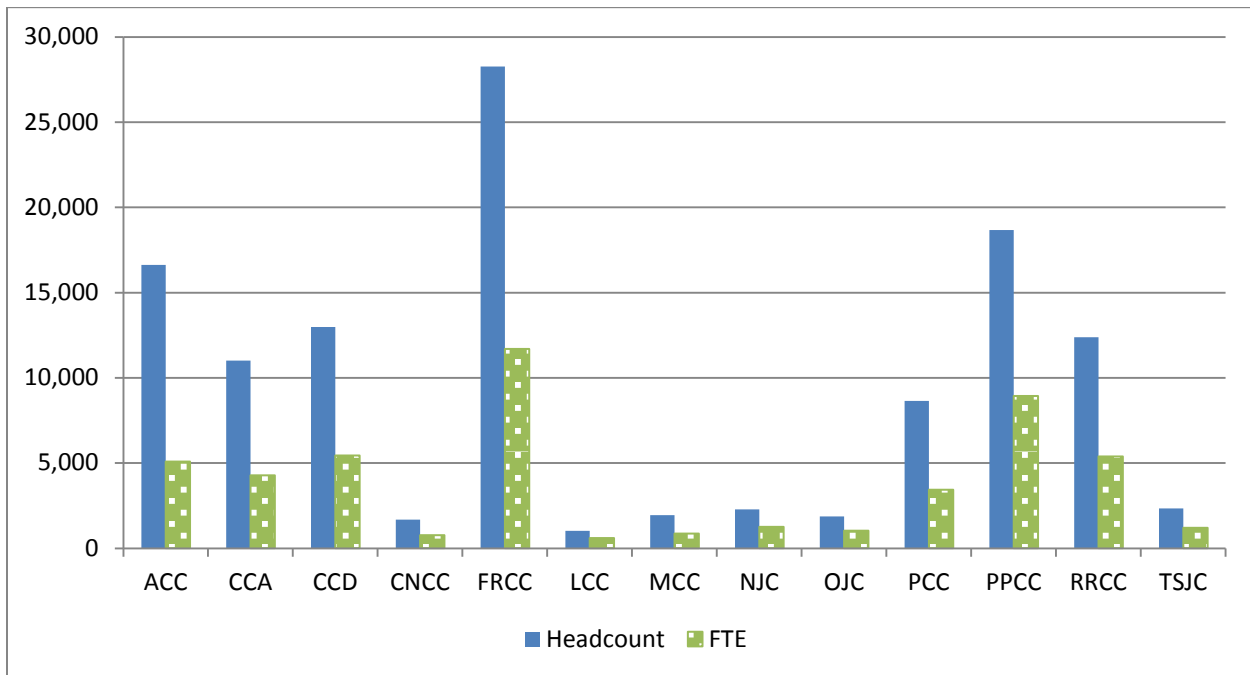
Pell Grant	\$90,209,859	67.8%
Supplemental Educational Opportunity Grant (SEOG)	\$1,980,277	1.5%
Colorado Student Grant	\$38,318,906	28.8%
Institutional Need-Based Grants	\$1,683,464	1.3%
Gear Up	\$539,546	0.4%
Colorado Career and Technical Education Grants	\$276,866	0.2%
Total Need-Based Grants	\$133,008,918	
Need-Based Grants as a Percent of Total Aid		48.1%

**Based on 30 credit hours; non-resident tuition may be lower based on a student's state of residence.

Demographics

Headcount and FTE by College: 2016-17

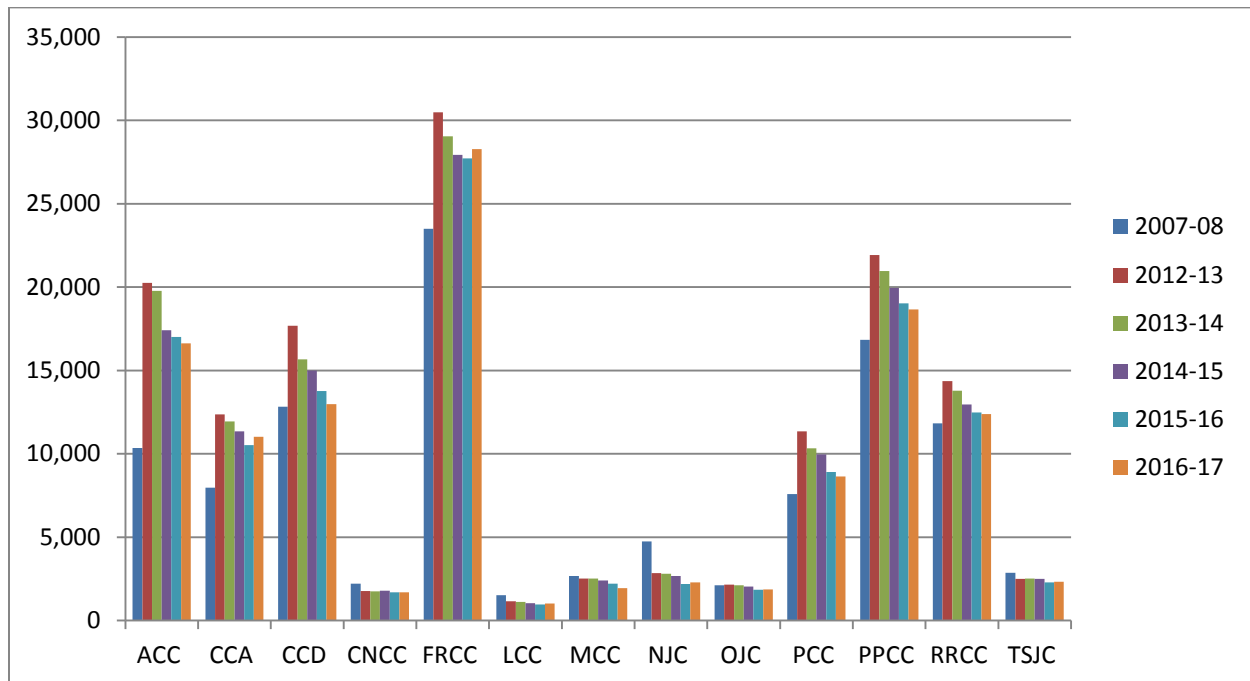
College	Headcount	Percent of Total CCCS Headcount	FTE	Percent of Total CCCS FTE
ACC	16,631	13.9%	5,074.1	10.2%
CCA	11,015	9.2%	4,277.6	8.6%
CCD	12,974	10.8%	5,434.7	10.9%
CNCC	1,684	1.4%	765.2	1.5%
FRCC	28,268	23.6%	11,678.3	23.4%
LCC	1,027	0.9%	585.3	1.2%
MCC	1,944	1.6%	853.4	1.7%
NJC	2,286	1.9%	1,249.9	2.5%
OJC	1,860	1.6%	1,016.1	2.0%
PCC	8,649	7.2%	3,432.2	6.9%
PPCC	18,666	15.6%	8,929.8	17.9%
RRCC	12,390	10.3%	5,372.5	10.8%
TSJC	2,330	1.9%	1,192.4	2.4%
CCCS	119,724	100.0%	49,861.6	100.0%



Annual Headcount Enrollment: 2007-08 and 2012-13 to 2016-17

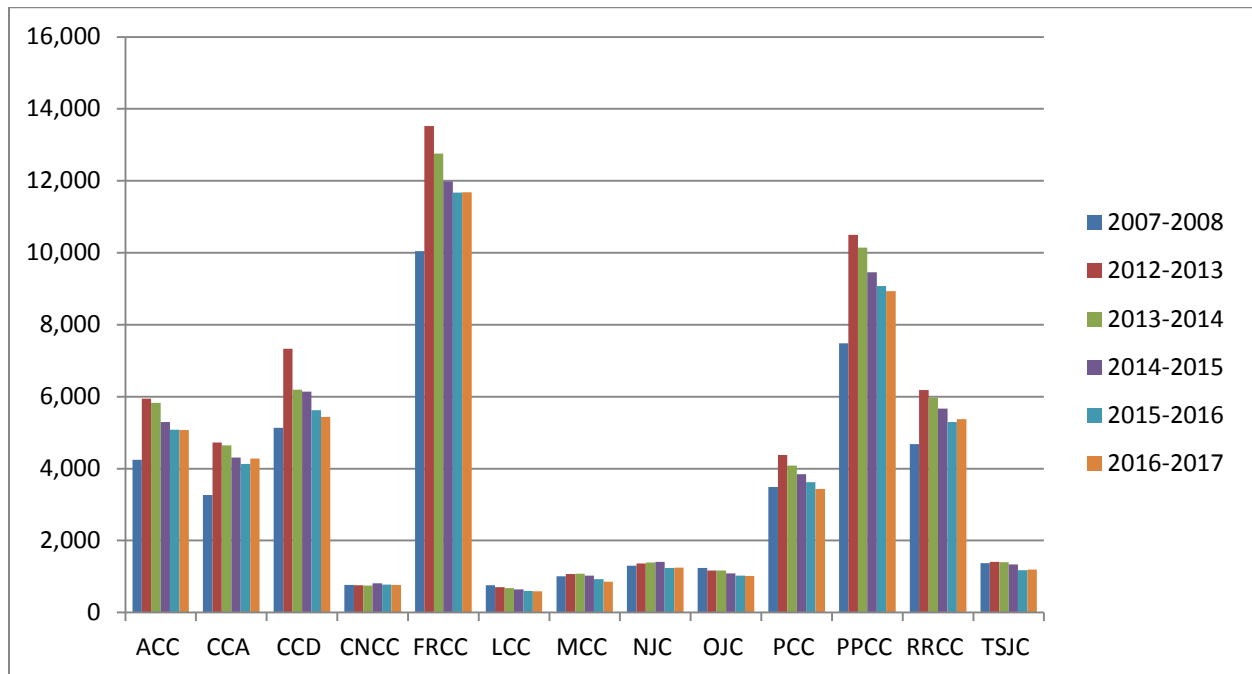
College	2007-08	2012-13	2013-14	2014-15	2015-16	2016-17	Three-Year % Change	Five-Year % Change	Ten-Year % Change
ACC	10,353	20,246	19,775	17,403	17,012	16,631	-4.4%	-17.9%	60.6%
CCA	7,973	12,357	11,935	11,355	10,529	11,015	-3.0%	-10.9%	38.2%
CCD	12,819	17,672	15,669	14,988	13,763	12,974	-13.4%	-26.6%	1.2%
CNCC	2,217	1,776	1,751	1,786	1,692	1,684	-5.7%	-5.2%	-24.0%
FRCC	23,494	30,485	29,044	27,925	27,726	28,268	1.2%	-7.3%	20.3%
LCC	1,514	1,151	1,109	1,040	965	1,027	-1.3%	-10.8%	-32.2%
MCC	2,674	2,518	2,520	2,402	2,203	1,944	-19.1%	-22.8%	-27.3%
NJC	4,752	2,849	2,806	2,668	2,200	2,286	-14.3%	-19.8%	-51.9%
OJC	2,115	2,156	2,121	2,043	1,847	1,860	-9.0%	-13.7%	-12.1%
PCC	7,587	11,345	10,331	9,960	8,911	8,649	-13.2%	-23.8%	14.0%
PPCC	16,844	21,922	20,962	19,939	19,020	18,666	-6.4%	-14.9%	10.8%
RRCC	11,831	14,352	13,787	12,964	12,476	12,390	-4.4%	-13.7%	4.7%
TSJC	2,855	2,501	2,514	2,490	2,291	2,330	-6.4%	-6.8%	-18.4%
CCCS	107,028	141,330	134,324	126,963	120,635	119,724	-5.7%	-15.3%	11.9%

*ACC's 2007-08 count does not include NCTI students.



Annual FTE Enrollment: 2007-08 and 2012-13 to 2016-17

College	2007-2008	2012-2013	2013-2014	2014-2015	2015-2016	2016-2017	Three-Year % Change	Five-Year % Change	Ten-Year % Change
ACC	4,244.0	5,942.0	5,826.1	5,298.1	5,081.5	5,074.1	-4.2%	-14.6%	19.7%
CCA	3,265.0	4,729.7	4,644.4	4,307.9	4,132.6	4,277.6	-0.7%	-9.6%	26.6%
CCD	5,137.0	7,328.7	6,195.1	6,141.2	5,626.5	5,434.7	-11.5%	-25.8%	9.5%
CNCC	771.0	756.6	752.2	807.3	775.9	765.2	-5.2%	1.1%	0.6%
FRCC	10,041.0	13,525.9	12,759.2	11,980.8	11,669.7	11,678.3	-2.5%	-13.7%	16.2%
LCC	760.0	706.9	679.2	646.9	599.5	585.3	-9.5%	-17.2%	-21.1%
MCC	1,004.0	1,069.4	1,077.1	1,026.7	923.9	853.4	-16.9%	-20.2%	-8.0%
NJC	1,297.0	1,366.3	1,387.7	1,404.1	1,242.7	1,249.9	-11.0%	-8.5%	-4.2%
OJC	1,236.0	1,167.6	1,163.1	1,088.9	1,021.5	1,016.1	-6.7%	-13.0%	-17.4%
PCC	3,487.0	4,377.0	4,082.2	3,848.4	3,624.7	3,432.2	-10.8%	-21.6%	3.9%
PPCC	7,481.0	10,500.0	10,146.5	9,454.8	9,075.3	8,929.8	-5.6%	-15.0%	21.3%
RRCC	4,680.0	6,185.9	5,971.0	5,672.1	5,296.5	5,372.5	-5.3%	-13.1%	13.2%
TSJC	1,368.0	1,407.6	1,399.3	1,336.0	1,176.3	1,192.4	-10.7%	-15.3%	-14.0%
CCCS	44,771.0	59,063.7	56,083.0	53,013.4	50,246.7	49,861.6	-5.9%	-15.6%	12.2%



Headcount Tuition Residency by Type and by College: 2016-17

College	Resident Headcount	Resident Percentage	Non-Resident Headcount	Non-Resident Percentage	Total Headcount	College Total as % of CCCS Total
ACC	14,228	85.6%	2,403	14.4%	16,631	13.9%
CCA	10,674	96.9%	341	3.1%	11,015	9.2%
CCD	11,916	91.8%	1,058	8.2%	12,974	10.8%
CNCC	1,430	84.9%	254	15.1%	1,684	1.4%
FRCC	26,096	92.3%	2,172	7.7%	28,268	23.6%
LCC	900	87.6%	127	12.4%	1,027	0.9%
MCC	1,916	98.6%	28	1.4%	1,944	1.6%
NJC	2,040	89.2%	246	10.8%	2,286	1.9%
OJC	1,681	90.4%	179	9.6%	1,860	1.6%
PCC	7,107	82.2%	1,542	17.8%	8,649	7.2%
PPCC	17,903	95.9%	763	4.1%	18,666	15.6%
RRCC	11,793	95.2%	597	4.8%	12,390	10.3%
TSJC	2,107	90.4%	223	9.6%	2,330	1.9%
CCCS	109,791	91.7%	9,933	8.3%	119,724	100.0%

FTE Tuition Residency by Type and by College: 2016-17

College	Resident FTE	Resident FTE Percentage	Non-Resident FTE	Non-Resident FTE Percentage	Total FTE	College Total as % of CCCS Total
ACC	4,892.4	96.4%	181.7	3.6%	5,074.1	10.2%
CCA	4,112.3	96.1%	165.3	3.9%	4,277.6	8.6%
CCD	4,971.2	91.5%	463.5	8.5%	5,434.7	10.9%
CNCC	589.9	77.1%	175.3	22.9%	765.2	1.5%
FRCC	10,803.4	92.5%	875.0	7.5%	11,678.3	23.4%
LCC	494.9	84.5%	90.4	15.5%	585.3	1.2%
MCC	845.7	99.1%	7.7	0.9%	853.4	1.7%
NJC	1,072.0	85.8%	177.9	14.2%	1,249.9	2.5%
OJC	889.1	87.5%	126.9	12.5%	1,016.1	2.0%
PCC	3,375.4	98.3%	56.9	1.7%	3,432.2	6.9%
PPCC	8,626.8	96.6%	302.9	3.4%	8,929.8	17.9%
RRCC	5,135.5	95.6%	237.0	4.4%	5,372.5	10.8%
TSJC	1,047.3	87.8%	145.1	12.2%	1,192.4	2.4%
CCCS	46,855.9	94.0%	3,005.7	6.0%	49,861.6	100.0%

Fall Headcount Enrollment: 2012 to 2016

College	2012	2013	2014	2015	2016	Three-Yr Change	Five-Yr Change
ACC	11,806	11,539	10,404	10,004	10,261	-1.4%	-13.1%
CCA	7,908	7,874	7,617	6,943	7,387	-3.0%	-6.6%
CCD	11,901	10,432	10,296	9,130	9,013	-12.5%	-24.3%
CNCC	1,158	1,138	1,145	1,178	1,098	-4.1%	-5.2%
FRCC	20,527	19,619	18,761	18,747	18,961	1.1%	-7.6%
LCC	916	905	839	777	791	-5.7%	-13.6%
MCC	1,839	1,851	1,837	1,647	1,474	-19.8%	-19.8%
NJC	1,971	1,962	1,776	1,498	1,645	-7.4%	-16.5%
OJC	1,456	1,449	1,434	1,410	1,464	2.1%	0.5%
PCC	7,432	6,718	6,203	5,673	5,562	-10.3%	-25.2%
PPCC	15,175	14,634	13,947	13,311	13,154	-5.7%	-13.3%
RRCC	9,031	8,600	8,112	7,789	7,734	-4.7%	-14.4%
TSJC	1,691	1,791	1,783	1,660	1,654	-7.2%	-2.2%
CCCS	92,811	88,512	84,154	79,767	80,198	-4.7%	-13.6%

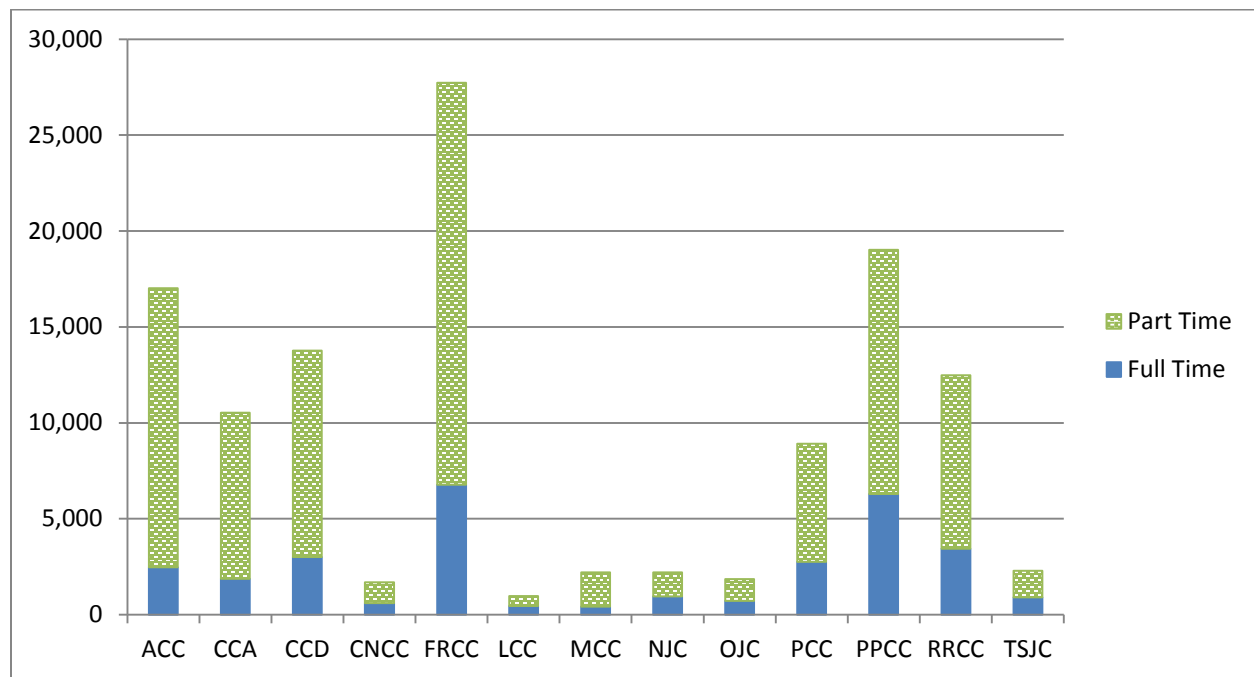
Fall FTE Enrollment: 2012 to 2016

College	2012	2013	2014	2015	2016	Three-Yr Change	Five-Yr Change
ACC	2,592.1	2,521.6	2,335.5	2,273.1	2,210.0	-5.4%	-14.7%
CCA	2,034.4	2,015.8	1,910.6	1,801.1	1,866.9	-2.3%	-8.2%
CCD	3,258.4	2,803.1	2,840.7	2,590.1	2,533.7	-10.8%	-22.2%
CNCC	367.6	353.5	371.6	377.4	362.3	-2.5%	-1.4%
FRCC	6,010.0	5,671.3	5,334.9	5,247.9	5,240.6	-1.8%	-12.8%
LCC	341.3	335.9	314.3	299.0	296.5	-5.7%	-13.1%
MCC	484.9	488.8	473.4	427.7	390.0	-17.6%	-19.6%
NJC	671.3	659.5	681.4	610.1	628.5	-7.8%	-6.4%
OJC	521.7	528.9	507.2	482.5	502.1	-1.0%	-3.8%
PCC	1,968.2	1,889.6	1,758.9	1,672.3	1,591.3	-9.5%	-19.2%
PPCC	4,689.6	4,539.3	4,224.6	4,024.9	4,014.2	-5.0%	-14.4%
RRCC	2,648.1	2,520.4	2,436.7	2,284.9	2,304.0	-5.4%	-13.0%
TSJC	633.9	654.2	623.1	557.0	559.5	-10.2%	-11.7%
CCCS	26,221.4	24,982.0	23,812.8	22,648.2	22,499.3	-5.5%	-14.2%

Headcount by Full and Part-Time Status by College: 2016-17

College	Full-Time Headcount	Percentage Full Time	Part-Time Headcount	Percentage Part Time	Total Headcount	College as % of CCCS Total
ACC	2,351	14.1%	14,280	85.9%	16,631	13.9%
CCA	1,920	17.4%	9,095	82.6%	11,015	9.2%
CCD	2,874	22.2%	10,100	77.8%	12,974	10.8%
CNCC	611	36.3%	1,073	63.7%	1,684	1.4%
FRCC	6,743	23.9%	21,525	76.1%	28,268	23.6%
LCC	460	44.8%	567	55.2%	1,027	0.9%
MCC	348	17.9%	1,596	82.1%	1,944	1.6%
NJC	991	43.4%	1,292	56.6%	2,283	1.9%
OJC	714	38.4%	1,146	61.6%	1,860	1.6%
PCC	2,503	28.9%	6,146	71.1%	8,649	7.2%
PPCC	6,154	33.0%	12,512	67.0%	18,666	15.6%
RRCC	3,464	28.0%	8,926	72.0%	12,390	10.3%
TSJC	886	38.0%	1,444	62.0%	2,330	1.9%
CCCS	30,019	25.1%	89,702	74.9%	119,721	100.0%

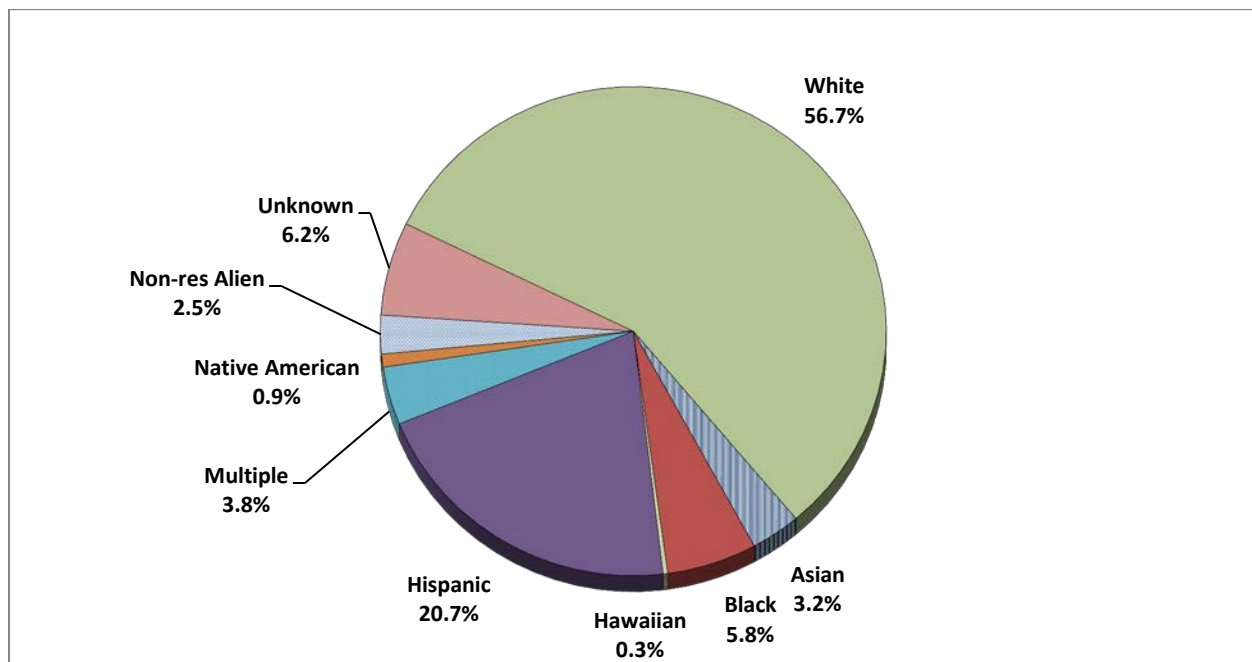
*FT/PT status is based on the number of credit hours a student took during his or her first term in the academic year, with the exception of summer, unless a student was only enrolled in the summer term.



Percentage of Headcount by Race/Ethnicity by College: 2016-17

College	Asian	Black or African American	Hawaiian or Pacific Islander	Hispanic	More Than One Race	Native American or Alaska Native	Non-resident Alien	Unknown	White	Total Students of Color
ACC	3.3%	2.9%	0.2%	16.6%	3.3%	0.6%	1.1%	11.6%	60.5%	30.3%
CCA	5.7%	19.1%	0.4%	24.9%	5.2%	0.5%	3.9%	4.8%	35.5%	58.6%
CCD	4.9%	10.8%	0.2%	30.2%	4.1%	0.9%	7.4%	7.9%	33.5%	55.6%
CNCC	0.8%	2.3%	0.2%	10.1%	1.6%	1.0%	1.4%	11.8%	70.9%	18.0%
FRCC	3.7%	1.7%	0.2%	17.0%	3.4%	0.6%	2.7%	5.0%	65.8%	28.0%
LCC	0.2%	4.4%	0.2%	24.0%	2.6%	0.9%	5.3%	2.1%	60.4%	32.9%
MCC	0.6%	2.9%	0.1%	23.0%	1.5%	0.6%	1.6%	5.7%	64.0%	30.4%
NJC	0.9%	3.1%	0.1%	12.0%	2.4%	0.7%	2.4%	5.4%	73.1%	20.3%
OJC	0.6%	4.0%	0.1%	30.4%	2.6%	0.7%	4.5%	4.0%	53.1%	40.0%
PCC	0.8%	4.3%	0.2%	31.6%	2.9%	2.8%	0.6%	0.8%	56.0%	42.9%
PPCC	2.5%	7.8%	0.7%	16.4%	5.9%	0.9%	0.9%	4.7%	60.2%	35.9%
RRCC	2.7%	2.2%	0.2%	16.9%	3.2%	0.8%	1.7%	6.2%	66.1%	27.7%
TSJC	0.8%	2.0%	0.2%	41.1%	1.8%	1.2%	1.8%	10.5%	40.7%	52.6%
CCCS	3.2%	5.8%	0.3%	20.7%	3.8%	0.9%	2.5%	6.2%	56.7%	36.9%

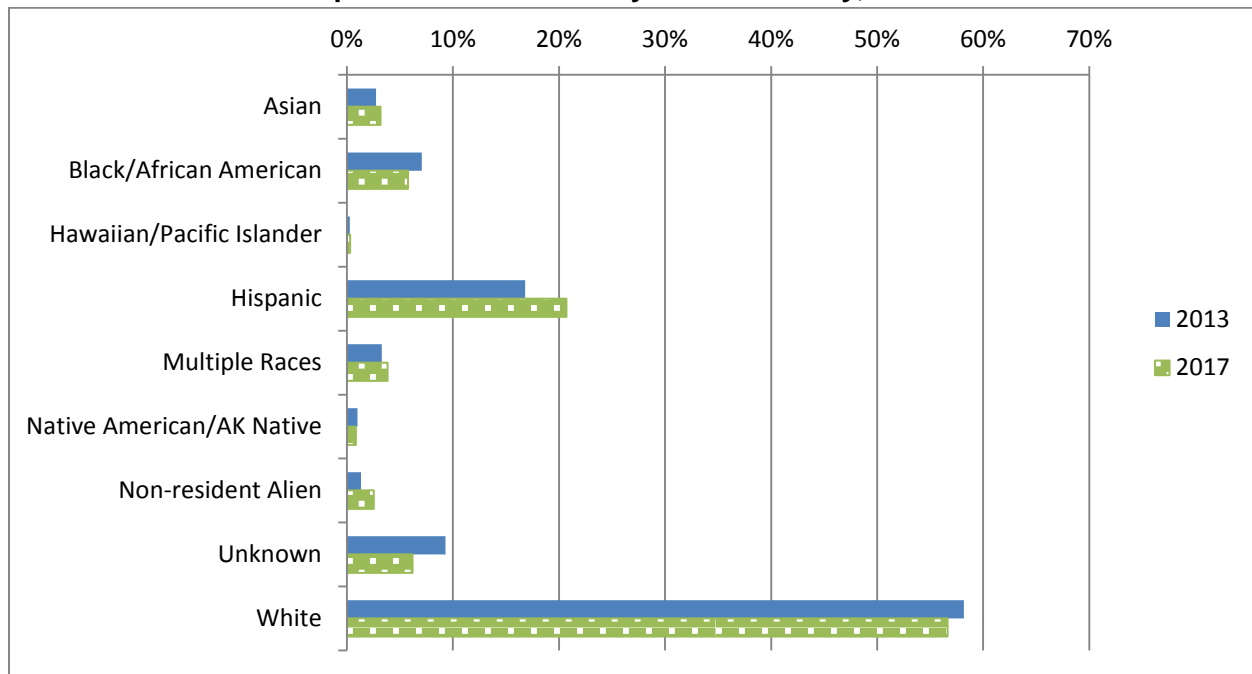
This chart is different from prior years' charts in that the proportion of students who did not report race/ethnicity is included in the chart, thereby reducing the proportions of other, individual race or ethnic groups. There was no change in the calculation of the students of color proportions. The students of color percentage includes students reporting as Asian, black or African American, Hawaiian or Pacific Islander, Hispanic, multiple races, and Native American or Alaska Native. "Unknown" students are excluded from the total students of color percentage calculation.



Percentage Point Change in Proportion of Students by Race/Ethnicity: 2013 to 2017

College	Asian	Black or African American	Hawaiian or Pacific Islander	Hispanic	More Than One Race	Native American or Alaska Native	Non-resident Alien	Unknown	White	Students of Color
ACC	0.9%	-0.1%	0.0%	1.9%	0.8%	0.0%	0.5%	-7.9%	3.9%	1.3%
CCA	0.4%	-3.9%	0.0%	6.8%	0.1%	0.0%	3.0%	-1.3%	-5.1%	2.9%
CCD	0.6%	-5.7%	0.0%	5.5%	0.4%	-0.1%	2.9%	-2.9%	-0.6%	-1.1%
CNCC	-0.2%	0.7%	0.0%	4.0%	-0.7%	0.0%	0.6%	2.7%	-7.0%	4.5%
FRCC	0.7%	0.1%	0.0%	3.9%	0.5%	-0.2%	1.4%	-1.5%	-5.0%	5.0%
LCC	-0.2%	1.2%	-0.2%	0.7%	0.0%	-0.1%	1.5%	-2.5%	-0.4%	0.5%
MCC	0.1%	1.5%	0.0%	9.9%	0.1%	0.2%	0.8%	-6.0%	-6.5%	11.2%
NJC	0.2%	-0.5%	0.0%	3.8%	1.2%	-0.1%	1.8%	-7.0%	0.5%	3.8%
OJC	0.0%	2.1%	-0.2%	1.4%	0.5%	0.0%	2.3%	-2.9%	-3.3%	3.0%
PCC	-0.1%	-1.0%	0.0%	4.5%	0.5%	0.1%	0.1%	-7.8%	3.6%	0.8%
PPCC	0.0%	-1.0%	0.0%	3.7%	1.0%	-0.3%	0.6%	-2.4%	-1.6%	2.8%
RRCC	0.4%	0.0%	-0.1%	4.3%	0.4%	-0.2%	0.6%	0.3%	-5.6%	5.2%
TSJC	-0.2%	-0.6%	0.2%	2.6%	0.6%	0.0%	0.9%	4.4%	-7.8%	5.1%
CCCS	0.4%	-1.3%	0.0%	3.9%	0.6%	-0.1%	1.2%	-3.1%	-1.5%	2.5%

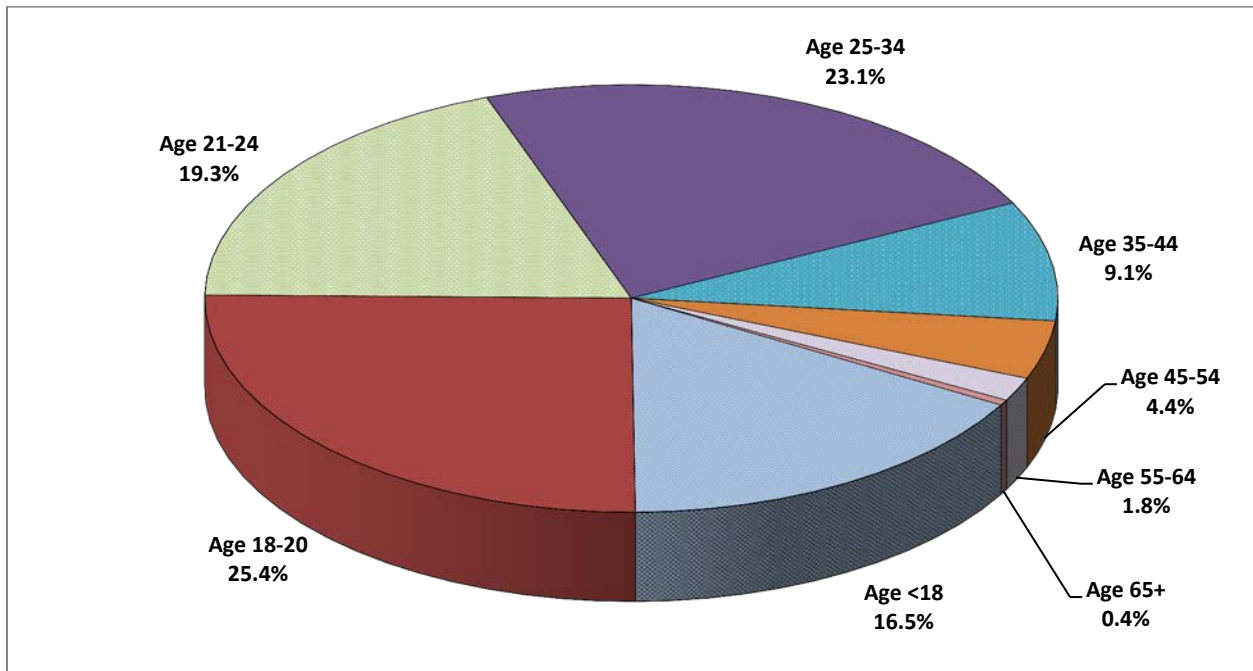
CCCS Proportion of Students by Race/Ethnicity, 2013 and 2017



Percent of Headcount by Age Group by College: 2016-17

College	<18	18-20	21-24	25-34	35-44	45-54	55-64	65+	Average Age	Median Age
ACC	25.1%	20.7%	14.4%	21.2%	11.0%	5.2%	2.0%	0.4%	25.5	21
CCA	26.1%	22.6%	16.0%	20.4%	9.1%	4.1%	1.3%	0.3%	24.5	21
CCD	12.4%	28.4%	23.5%	24.9%	6.7%	2.7%	1.2%	0.2%	24.5	22
CNCC	23.2%	26.5%	12.2%	16.6%	9.3%	6.4%	4.6%	1.2%	26.6	21
FRCC	14.1%	27.2%	23.6%	22.6%	7.6%	3.4%	1.3%	0.2%	24.7	22
LCC	23.2%	46.3%	11.1%	10.5%	4.8%	2.3%	1.6%	0.3%	22.0	19
MCC	26.9%	30.0%	11.5%	14.2%	7.6%	4.4%	3.2%	2.2%	25.3	19
NJC	11.6%	42.4%	11.5%	13.3%	8.2%	8.3%	4.2%	0.5%	26.4	20
OJC	20.8%	33.7%	11.8%	14.0%	6.6%	5.2%	4.7%	3.3%	26.6	20
PCC	14.5%	18.5%	16.3%	27.0%	13.6%	7.2%	2.4%	0.5%	27.9	25
PPCC	9.6%	25.2%	21.2%	28.2%	9.7%	4.4%	1.5%	0.3%	26.1	23
RRCC	13.6%	24.5%	19.8%	25.1%	9.2%	4.9%	2.3%	0.6%	26.2	23
TSJC	26.0%	28.1%	13.6%	16.8%	8.4%	4.4%	2.2%	0.5%	24.4	20
CCCS Total	16.5%	25.4%	19.3%	23.1%	9.1%	4.4%	1.8%	0.4%	25.4	22

Age is calculated from December 31, 2016. Percentages are based on reported data only. A small number of students, less than 0.01 percent, did not report a birth date.

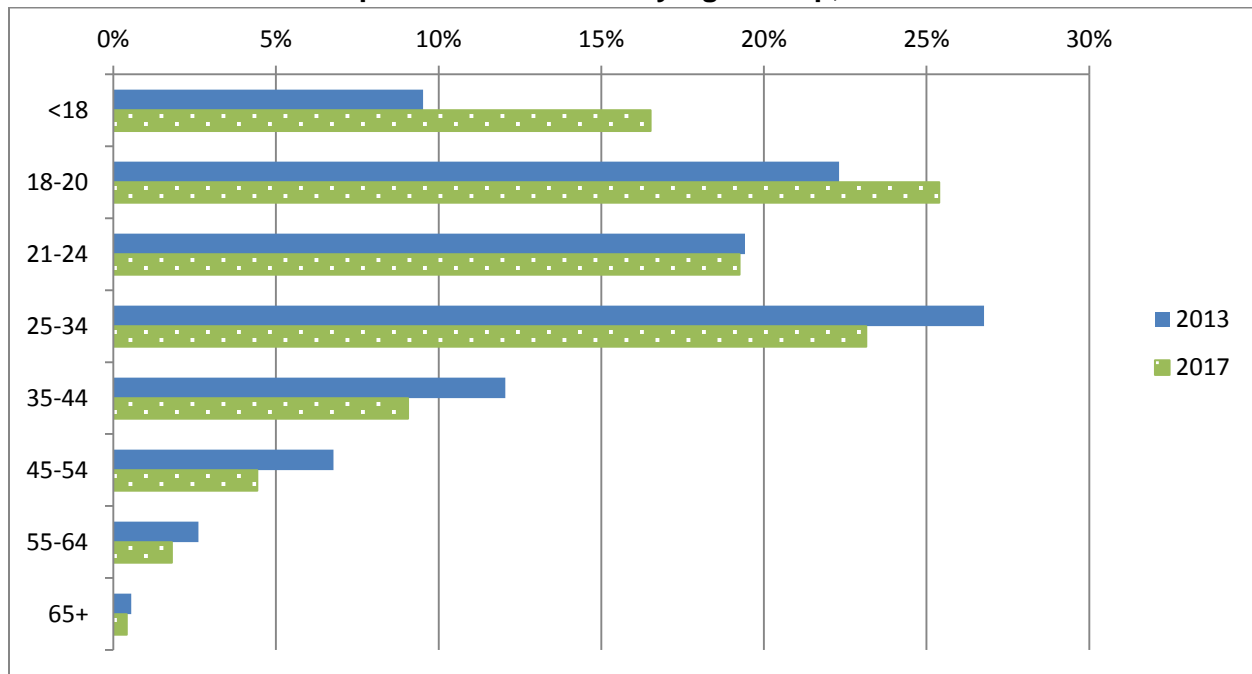


Percentage Point Change in Proportion of Students by Age Group, 2013 to 2017

College	<18	18-20	21-24	25-34	35-44	45-54	55-64	65+	Average Age	Median Age
ACC	13.1%	3.4%	-0.3%	-8.1%	-4.7%	-2.9%	-0.6%	0.1%	-3.4	-5
CCA	5.5%	3.6%	0.7%	-3.8%	-3.2%	-1.7%	-0.8%	-0.2%	-2.2	-2
CCD	4.9%	5.0%	1.1%	-4.9%	-3.1%	-2.2%	-0.5%	-0.1%	-2.2	-2
CNCC	3.5%	3.0%	-0.2%	-1.0%	-1.8%	-2.5%	-1.3%	0.3%	-1.8	-1
FRCC	7.8%	2.3%	-0.8%	-3.6%	-2.7%	-2.3%	-0.7%	0.0%	-2.2	-1
LCC	-0.8%	5.4%	-3.0%	-1.0%	-1.0%	0.1%	0.3%	0.0%	-0.3	0
MCC	5.5%	6.7%	0.6%	-2.4%	-2.4%	-4.1%	-2.6%	-1.3%	-4.0	-3
NJC	1.1%	7.8%	0.9%	-0.7%	-3.0%	-1.0%	-1.7%	-3.4%	-3.7	-2
OJC	0.4%	2.8%	-0.4%	-2.0%	-2.1%	-0.9%	1.2%	1.1%	0.1	0
PCC	7.8%	1.1%	-0.7%	-1.9%	-2.5%	-2.5%	-0.9%	-0.2%	-2.3	-2
PPCC	3.6%	1.9%	-0.1%	-0.6%	-2.0%	-2.1%	-0.7%	0.0%	-1.5	-1
RRCC	6.7%	3.4%	-0.9%	-2.1%	-2.9%	-2.7%	-1.4%	0.0%	-2.5	-2
TSJC	15.0%	0.8%	-1.6%	-4.8%	-3.3%	-2.9%	-1.9%	-1.2%	-4.0	-3
CCCS Total	7.0%	3.1%	-0.2%	-3.6%	-3.0%	-2.3%	-0.8%	-0.1%	-2.4	-2

*The average age of CCCS students fell almost two-and-a-half years from 2013 to 2017, from 27.8 years of age to 25.4, while the median age fell from 24 to 22.

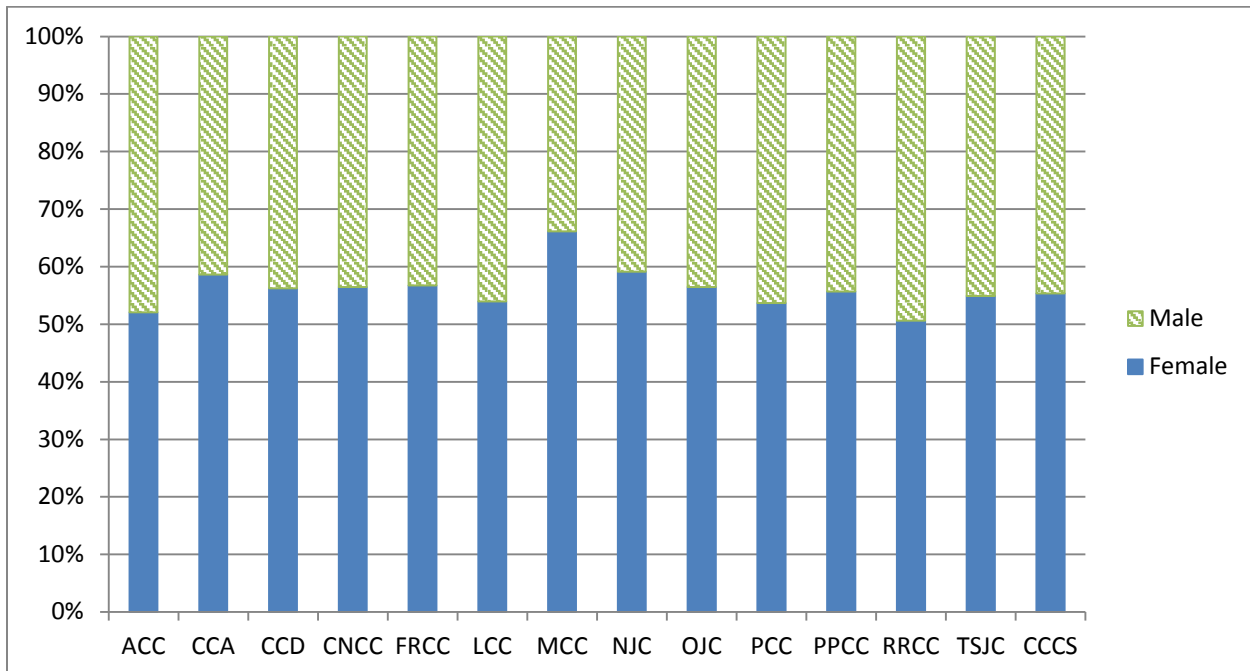
CCCS Proportion of Students by Age Group, 2013 and 2017



Headcount by Gender by College: 2016-17

College	Female Students	Percentage Female	Male Students	Percentage Male	Total Count
ACC	8,685	53.8%	7,467	46.2%	16,152
CCA	6,449	58.6%	4,565	41.4%	11,014
CCD	7,334	56.5%	5,640	43.5%	12,974
CNCC	899	53.4%	784	46.6%	1,683
FRCC	15,943	56.4%	12,324	43.6%	28,267
LCC	569	55.4%	458	44.6%	1,027
MCC	1,292	66.5%	652	33.5%	1,944
NJC	1,333	58.3%	953	41.7%	2,286
OJC	1,011	54.4%	848	45.6%	1,859
PCC	4,699	54.3%	3,948	45.7%	8,647
PPCC	10,466	56.1%	8,200	43.9%	18,666
RRCC	6,137	49.6%	6,247	50.4%	12,384
TSJC	1,284	55.1%	1,046	44.9%	2,330
CCCS	66,101	55.4%	53,132	44.6%	119,233

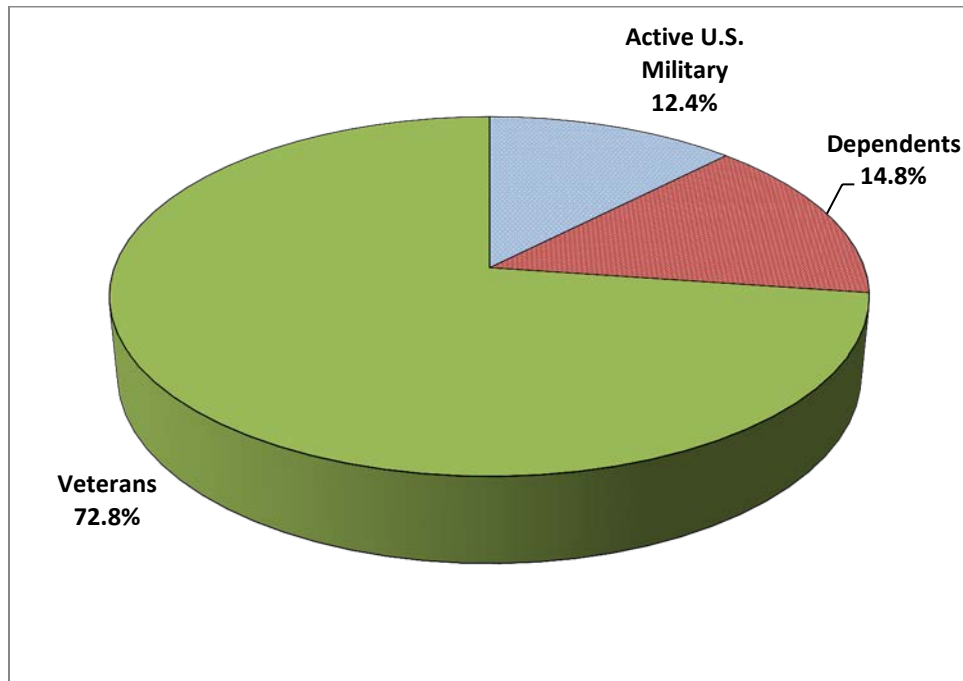
Counts are based on reported data only. About 0.4 percent of students did not report gender.



Headcount of Military-related Students: 2016-17*

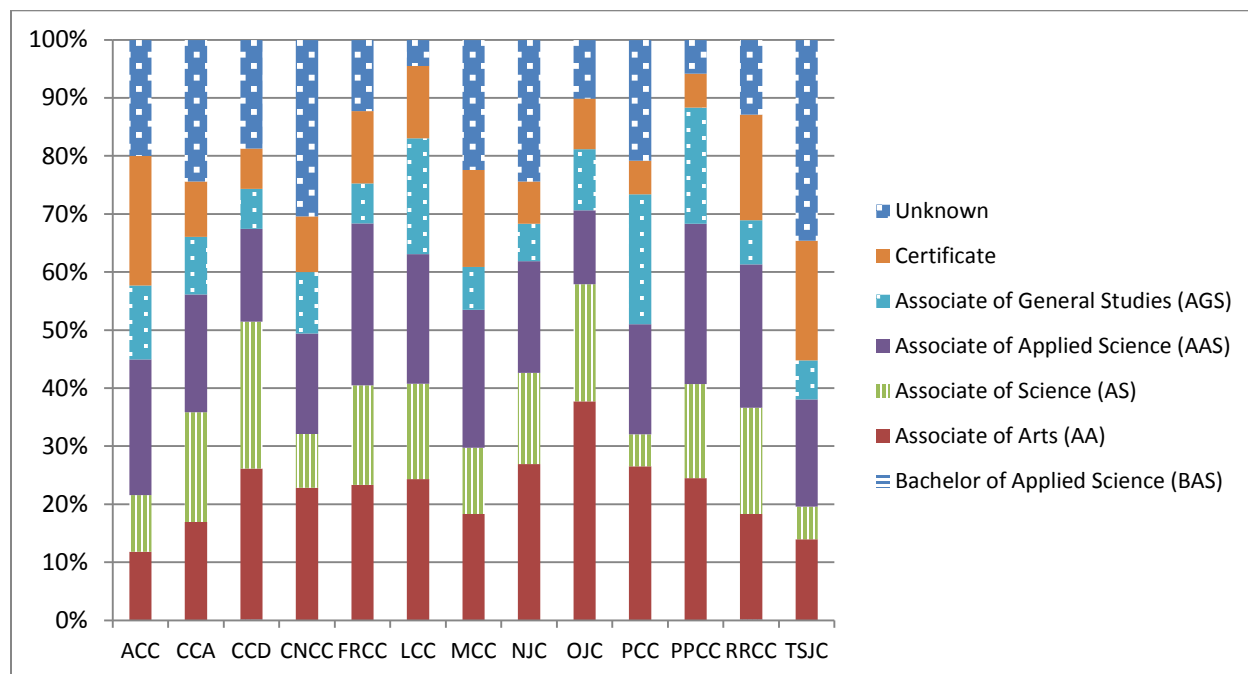
College	Active U.S. Military	Veterans	Total Military*	Dependents of Active U.S. Military	Total U.S. Military-related Students	College as Percent of Total CCCS
ACC	4	462	466	9	475	5.7%
CCA	39	449	488	34	522	6.3%
CCD	8	385	393	0	393	4.8%
CNCC	0	28	28	0	28	0.3%
FRCC	8	991	999	3	1,002	12.1%
LCC	0	15	15	0	15	0.2%
MCC	0	40	40	0	40	0.5%
NJC	0	22	22	0	22	0.3%
OJC	0	62	62	0	62	0.8%
PCC	5	402	407	40	447	5.4%
PPCC	956	2,505	3,461	1,140	4,601	55.7%
RRCC	0	582	582	1	583	7.1%
TSJC	3	70	73	0	73	0.9%
CCCS	1,023	6,013	7,036	1,227	8,263	100.0%

* In the course of an academic year, a student could be in multiple categories; for example, an active member of the military in one semester and a veteran in another. The hierarchical order in this chart gives precedence to active military. The table does not include members of the Canadian military, of which there were six.



Headcount by Degree-Seeking Type by College: 2016-17

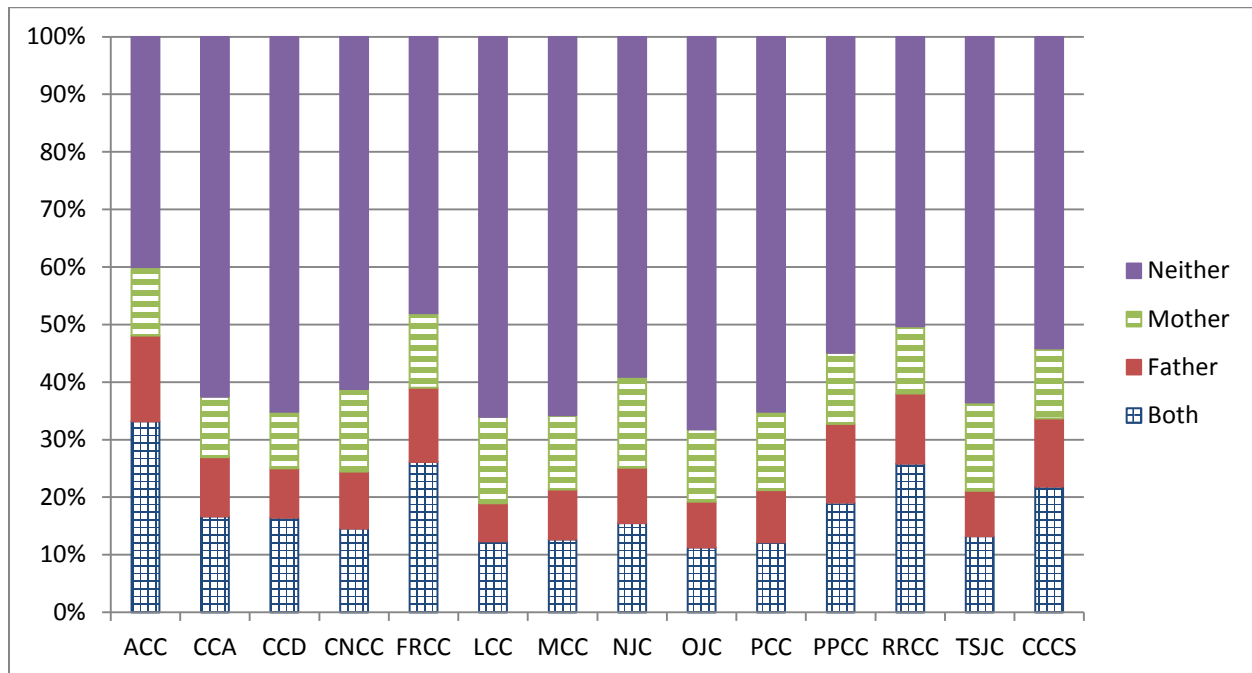
College	Bachelor of Applied Science (BAS)	Associate of Arts (AA)	Associate of Science (AS)	Associate of Applied Science (AAS)	Associate of General Studies (AGS)	Certificate	Unknown	Total
ACC	0	1,967	1,625	3,884	2,117	3,713	3,325	16,631
CCA	0	1,869	2,084	2,233	1,091	1,051	2,687	11,015
CCD	22	3,374	3,283	2,071	896	899	2,429	12,974
CNCC	0	385	156	291	179	161	512	1,684
FRCC	0	6,594	4,860	7,878	1,948	3,522	3,466	28,268
LCC	0	250	169	229	205	128	46	1,027
MCC	0	356	222	462	144	324	436	1,944
NJC	0	616	359	440	147	167	557	2,286
OJC	0	702	375	237	196	162	188	1,860
PCC	10	2,288	477	1,636	1,940	496	1,802	8,649
PPCC	0	4,577	3,025	5,158	3,729	1,093	1,084	18,666
RRCC	19	2,250	2,272	3,061	942	2,253	1,593	12,390
TSJC	0	326	131	430	157	480	806	2,330
CCCS	51	25,554	19,038	28,010	13,691	14,449	18,931	119,724
CCCS %	0.0%	21.3%	15.9%	23.4%	11.4%	12.1%	15.8%	100.0%



**Parental Education Level and First Generation Students
Students' Parents Who Earned a Four-Year Degree, 2016-17**

College	Both	Father	Mother	Neither: First Generation
ACC	33.2%	14.9%	11.9%	40.0%
CCA	16.7%	10.3%	10.5%	62.5%
CCD	16.4%	8.6%	9.8%	65.1%
CNCC	14.6%	9.9%	14.4%	61.2%
FRCC	26.1%	12.9%	12.9%	48.0%
LCC	12.3%	6.6%	15.0%	66.0%
MCC	12.7%	8.7%	12.9%	65.7%
NJC	15.5%	9.6%	15.8%	59.1%
OJC	11.3%	8.0%	12.6%	68.2%
PCC	12.2%	9.1%	13.6%	65.1%
PPCC	19.1%	13.7%	12.3%	54.9%
RRCC	25.9%	12.1%	11.7%	50.3%
TSJC	13.2%	7.9%	15.3%	63.5%
CCCS	21.8%	11.9%	12.2%	54.1%

Source: Banner. Based on students who reported. About 4.4 percent of students did not report.

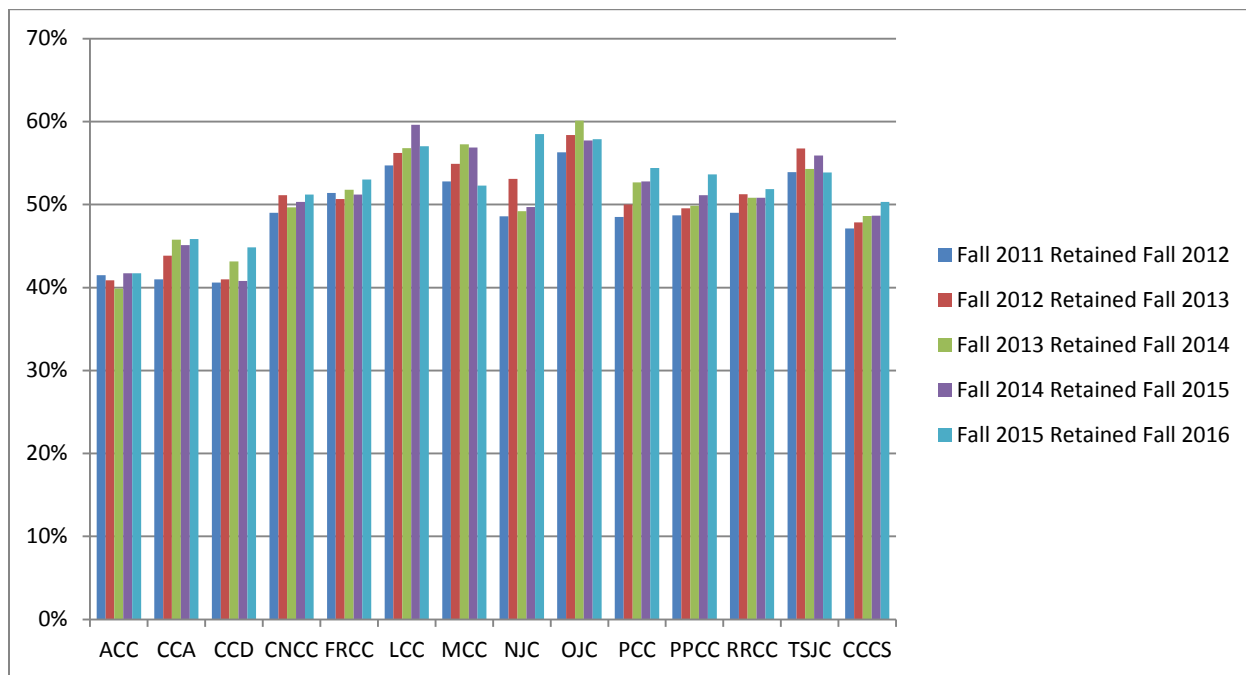


Retention

Fall-to-Fall Full- and Part-Time Retention Trends by College Fall 2012 to Fall 2016

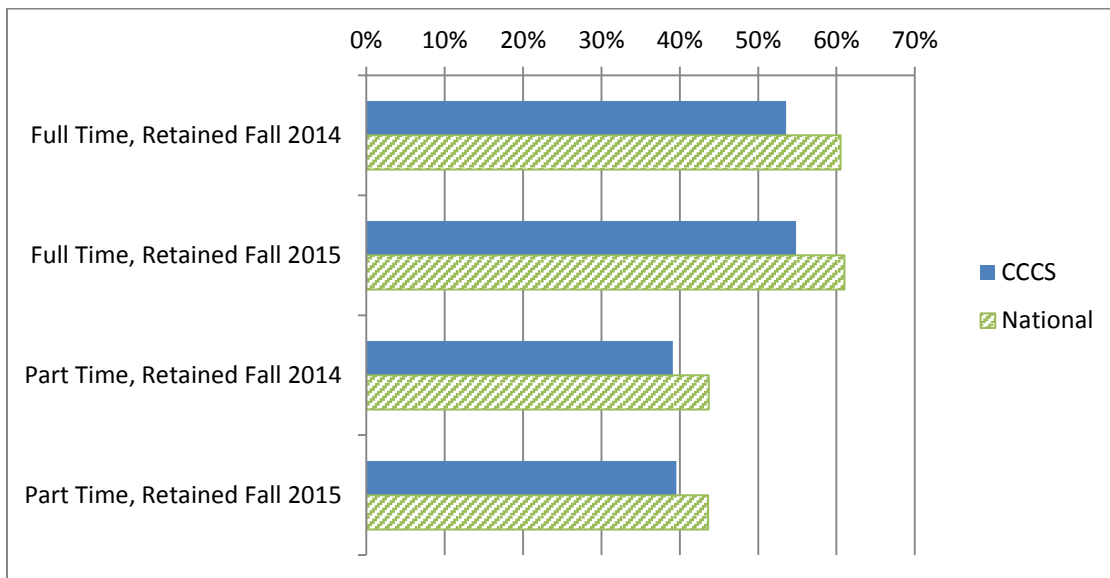
College	Fall 2011 Retained Fall 2012	Fall 2012 Retained Fall 2013	Fall 2013 Retained Fall 2014	Fall 2014 Retained Fall 2015	Fall 2015 Retained Fall 2016
ACC	41.5%	40.9%	39.8%	41.7%	41.7%
CCA	41.0%	43.8%	45.8%	45.1%	45.8%
CCD	40.6%	41.0%	43.1%	40.8%	44.8%
CNCC	49.0%	51.1%	49.6%	50.3%	51.2%
FRCC	51.4%	50.7%	51.8%	51.2%	53.0%
LCC	54.7%	56.2%	56.8%	59.6%	57.0%
MCC	52.8%	54.9%	57.3%	56.9%	52.3%
NJC	48.6%	53.1%	49.2%	49.7%	58.5%
OJC	56.3%	58.4%	60.1%	57.7%	57.9%
PCC	48.5%	50.0%	52.7%	52.8%	54.4%
PPCC	48.7%	49.5%	49.9%	51.1%	53.6%
RRCC	49.0%	51.2%	50.8%	50.8%	51.9%
TSJC	53.9%	56.8%	54.3%	55.9%	53.9%
CCCS	47.1%	47.8%	48.6%	48.6%	50.3%

Note: Fall to fall retention of all students adjusted for graduations and awards.



Retention Rate of First-time, Degree/Certificate Seeking Students
Full Time and Part Time, by College and Compared to National Rates

College	Full Time, Retained Fall 2014	Full Time, Retained Fall 2015	Percentage Point Difference	Part Time, Retained Fall 2014	Part Time, Retained Fall 2015	Percentage Point Difference
ACC	50.8%	58.7%	7.9%	36.8%	42.1%	5.3%
CCA	55.3%	56.0%	0.7%	41.2%	44.0%	2.7%
CCD	53.1%	49.4%	-3.7%	37.1%	34.8%	-2.2%
CNCC	48.9%	54.7%	5.8%	42.9%	31.7%	-11.1%
FRCC	55.8%	56.3%	0.5%	42.3%	45.1%	2.8%
LCC	51.7%	59.1%	7.4%	35.0%	37.0%	2.0%
MCC	68.5%	63.2%	-5.3%	48.6%	48.3%	-0.3%
NJC	54.4%	55.2%	0.8%	10.0%	14.0%	4.0%
OJC	51.7%	49.5%	-2.2%	47.4%	41.9%	-5.5%
PCC	54.8%	51.6%	-3.2%	40.3%	41.1%	0.8%
PPCC	48.8%	50.2%	1.4%	36.4%	34.4%	-1.9%
RRCC	56.1%	63.4%	7.3%	40.1%	36.2%	-3.9%
TSJC	63.5%	62.2%	-1.3%	27.8%	51.6%	23.8%
CCCS	53.6%	54.9%	1.3%	39.1%	39.6%	0.4%
National	60.5%	61.0%	0.5%	43.7%	43.6%	-0.1%

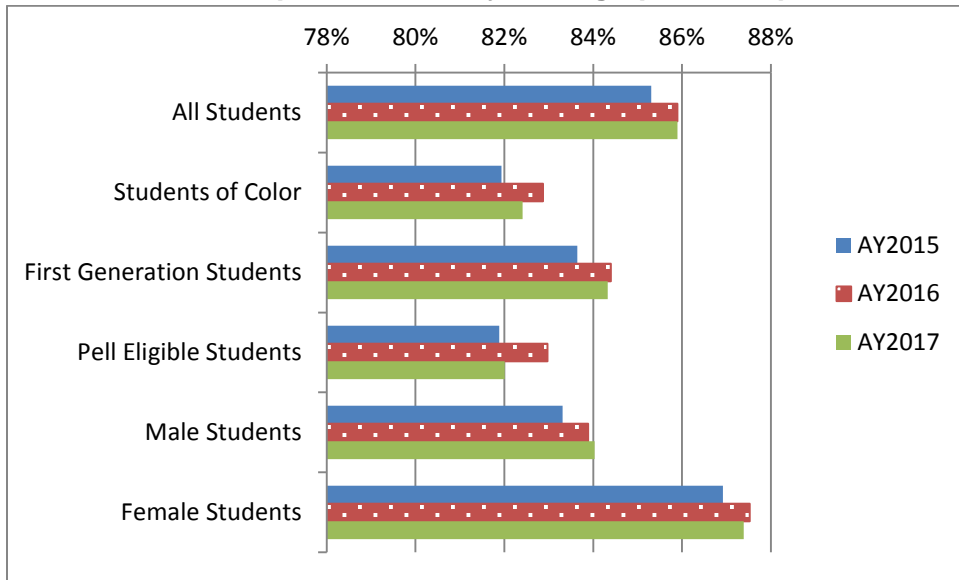


Course Completion Rates

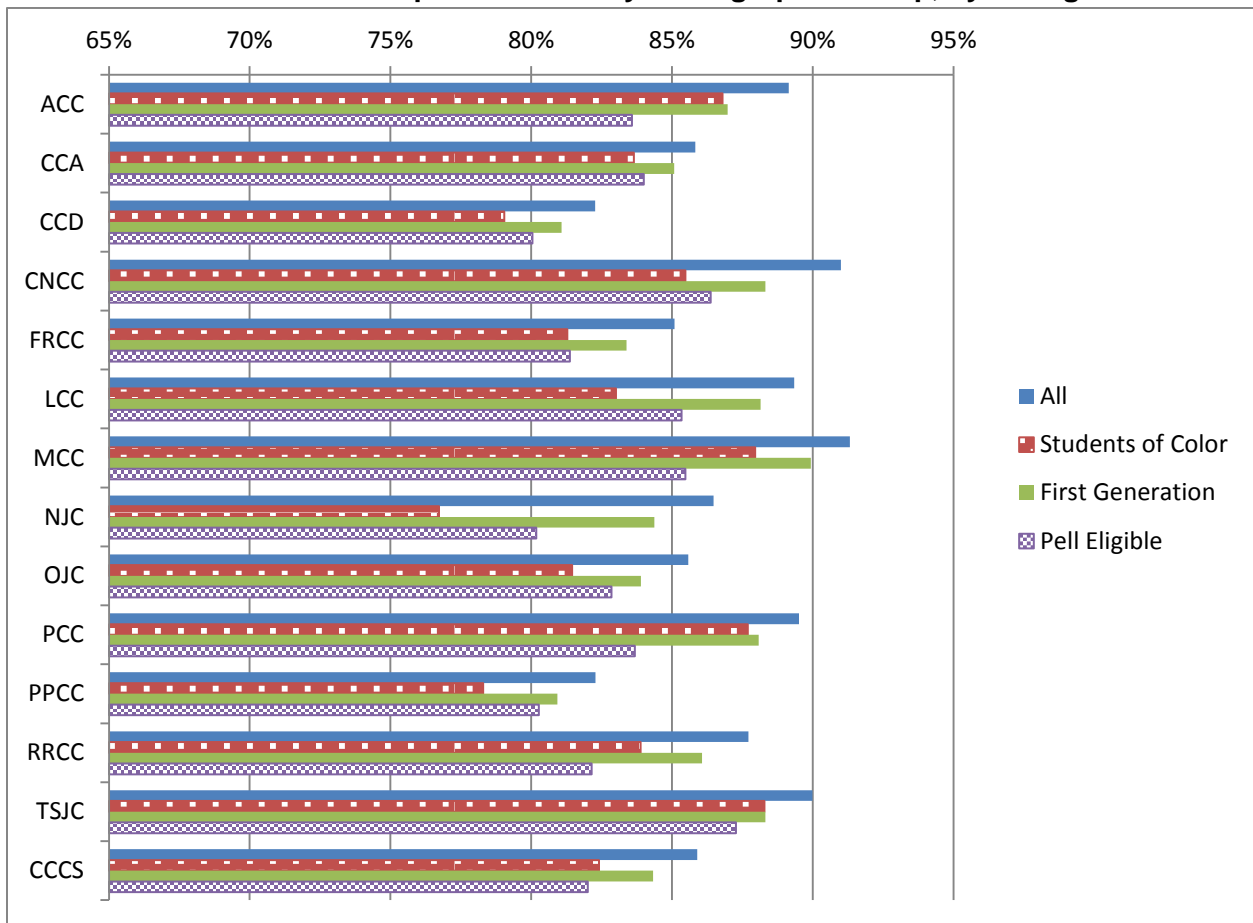
Course Completion Rates Overall and by Specified Demographic Groups, by College

College	Year	All Students in All Courses (duplicated students)	Students of Color (duplicated students)	First Gen. Students (duplicated students)	Pell Eligible Students (duplicated students)	Male Students (duplicated students)	Female Students (duplicated students)
ACC	AY2015	87.9%	86.2%	85.5%	82.3%	86.1%	89.2%
	AY2016	89.2%	87.2%	87.1%	84.3%	87.7%	90.3%
	AY2017	89.2%	86.8%	87.0%	83.6%	87.2%	90.5%
CCA	AY2015	84.8%	82.3%	83.7%	82.0%	83.4%	85.8%
	AY2016	86.8%	85.2%	86.0%	85.6%	85.7%	87.7%
	AY2017	85.8%	83.7%	85.1%	84.0%	85.1%	86.4%
CCD	AY2015	80.1%	77.1%	78.4%	78.2%	76.9%	82.6%
	AY2016	81.9%	79.5%	80.6%	81.2%	78.7%	84.3%
	AY2017	82.3%	79.0%	81.1%	80.0%	79.2%	84.6%
CNCC	AY2015	91.2%	86.2%	89.2%	87.2%	89.8%	92.1%
	AY2016	91.9%	90.4%	90.5%	89.1%	89.7%	93.4%
	AY2017	91.0%	85.5%	88.3%	86.4%	89.5%	92.0%
FRCC	AY2015	84.7%	80.8%	83.2%	81.9%	81.7%	86.9%
	AY2016	85.3%	82.5%	83.9%	82.6%	82.7%	87.3%
	AY2017	85.1%	81.3%	83.4%	81.4%	82.5%	87.1%
LCC	AY2015	89.0%	84.7%	87.2%	83.6%	85.8%	91.4%
	AY2016	87.9%	81.2%	85.2%	80.7%	84.6%	90.5%
	AY2017	89.3%	83.0%	88.1%	85.3%	87.6%	90.8%
MCC	AY2015	93.1%	89.9%	91.8%	89.0%	92.8%	93.3%
	AY2016	92.7%	90.4%	91.4%	88.4%	92.3%	92.9%
	AY2017	91.3%	88.0%	89.9%	85.5%	90.0%	92.0%
NJC	AY2015	85.4%	73.4%	81.2%	79.4%	81.3%	88.6%
	AY2016	86.7%	77.5%	84.6%	81.3%	82.7%	90.1%
	AY2017	86.5%	76.7%	84.4%	80.2%	84.1%	88.7%
OJC	AY2015	85.9%	82.5%	84.3%	81.9%	85.7%	86.1%
	AY2016	86.0%	80.2%	83.6%	82.9%	84.2%	87.4%
	AY2017	85.6%	81.5%	83.9%	82.8%	82.9%	87.9%
PCC	AY2015	90.5%	89.2%	89.4%	85.4%	91.5%	89.4%
	AY2016	88.9%	87.2%	87.8%	83.8%	90.0%	88.0%
	AY2017	89.5%	87.7%	88.1%	83.7%	89.9%	89.2%
PPCC	AY2015	82.0%	77.6%	81.0%	80.6%	78.3%	85.0%
	AY2016	82.6%	78.5%	81.5%	81.5%	79.2%	85.3%
	AY2017	82.3%	78.3%	80.9%	80.3%	79.1%	84.8%
RRCC	AY2015	86.0%	83.0%	84.9%	81.5%	84.6%	87.4%
	AY2016	86.4%	83.3%	84.6%	82.4%	85.0%	87.9%
	AY2017	87.7%	83.9%	86.1%	82.1%	87.4%	88.1%
TSJC	AY2015	89.8%	87.9%	88.3%	87.6%	90.1%	89.5%
	AY2016	89.6%	86.6%	87.3%	87.6%	88.7%	90.5%
	AY2017	90.0%	88.3%	88.3%	87.3%	89.1%	90.8%
CCCS	AY2015	85.3%	81.9%	83.6%	81.9%	83.3%	86.9%
	AY2016	85.9%	82.9%	84.4%	83.0%	83.9%	87.5%
	AY2017	85.9%	82.4%	84.3%	82.0%	84.0%	87.4%
% of Total	AY2015	100.0%	32.0%	53.5%	40.2%	44.8%	55.2%
	AY2016	100.0%	32.5%	54.3%	37.0%	44.9%	55.0%
	AY2017	100.0%	34.4%	54.3%	31.6%	44.8%	55.0%

CCCS Course Completion Rates by Demographic Group, 2015 - 2017



2017 Course Completion Rates by Demographic Group, by College

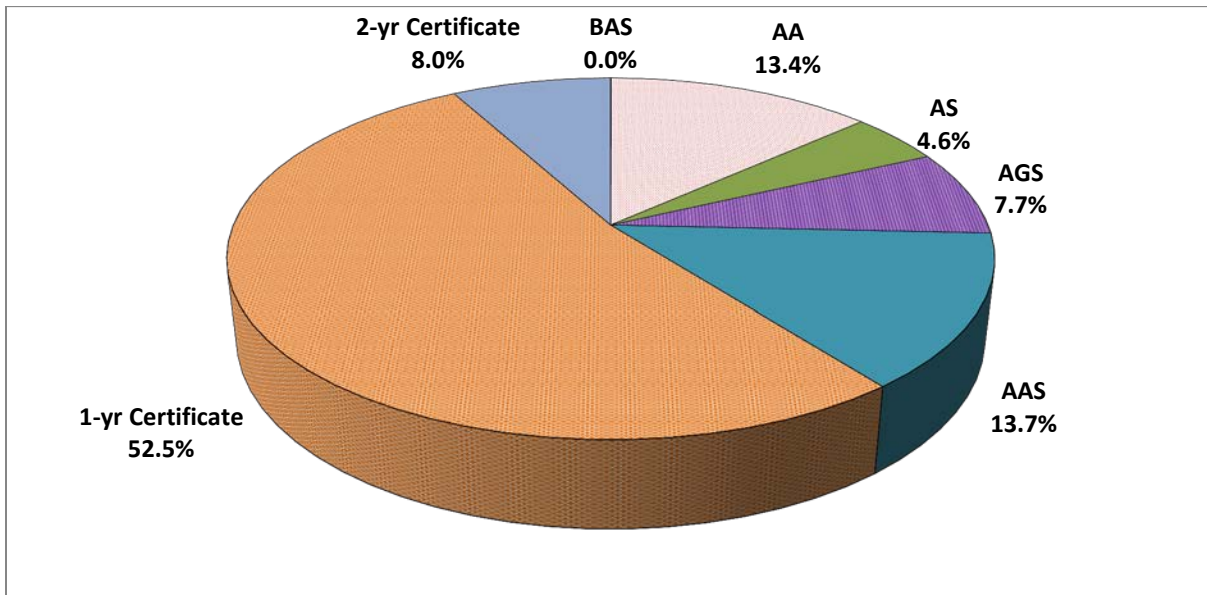


Credentials

Credentials Awarded by Type of Award: 2016-17

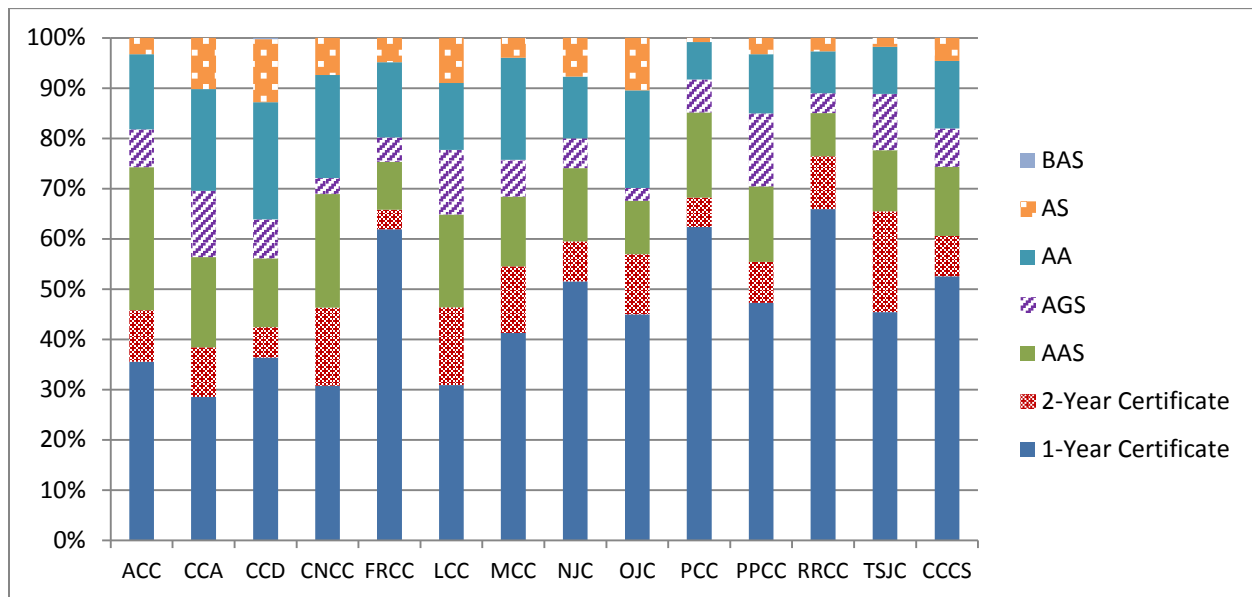
Degree Awarded	Number of Awards AY 2017	Award Level as % of Total	Change in Awards from AY 2016	Percent Change from AY 2016
BAS	4	0.0%	4	N/A
AA	2,798	13.4%	48	1.7%
AS	966	4.6%	-47	-4.6%
AGS	1,606	7.7%	61	3.9%
AAS	2,869	13.7%	-183	-6.0%
1-yr Certificate	10,975	52.5%	1,248	12.8%
2-yr Certificate	1,675	8.0%	-102	-5.7%
CCCS Total	20,893	100.0%	1,025	5.2%

Generally, Associate of Arts (AA), Associate of Science (AS), and Associate of General Studies (AGS) degrees are transfer-oriented awards, while the Associate of Applied Science (AAS) degree is considered to be a professionally oriented terminal award. AY 2016-17 was the first year Bachelor of Applied Science (BAS) degrees were awarded by a CCCS college.



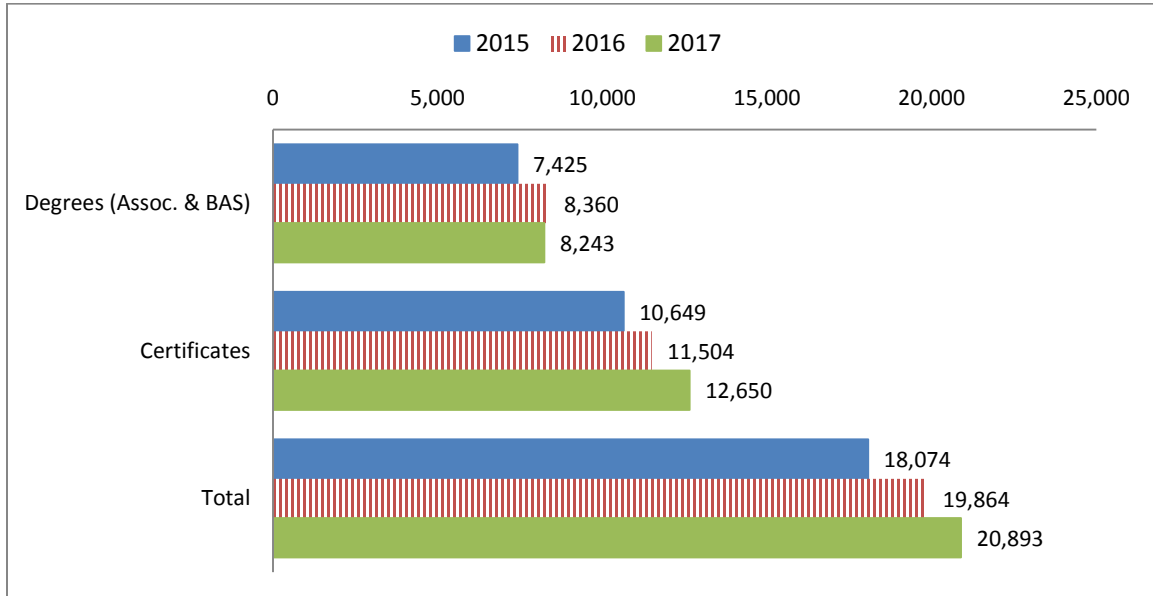
Credentials Awarded by Type of Credential by College: 2016-17

College	1-Year Certificate	2-Year Certificate	AAS	AGS	AA	AS	BAS	Total Awards	% of CCCS Awards
ACC	35.6%	10.2%	28.4%	7.5%	14.9%	3.3%	0.0%	1,378	6.6%
CCA	28.5%	9.9%	17.9%	13.2%	20.2%	10.2%	0.0%	909	4.4%
CCD	36.3%	6.1%	13.7%	7.8%	23.2%	12.5%	0.3%	1,299	6.2%
CNCC	30.7%	15.5%	22.6%	3.2%	20.5%	7.4%	0.0%	283	1.4%
FRCC	61.9%	3.9%	9.6%	4.8%	15.0%	4.9%	0.0%	5,545	26.5%
LCC	30.9%	15.5%	18.5%	12.9%	13.3%	9.0%	0.0%	233	1.1%
MCC	41.3%	13.2%	13.9%	7.3%	20.3%	4.0%	0.0%	424	2.0%
NJC	51.5%	8.0%	14.5%	5.9%	12.3%	7.7%	0.0%	674	3.2%
OJC	45.0%	11.9%	10.7%	2.5%	19.5%	10.5%	0.0%	478	2.3%
PCC	62.3%	5.9%	17.0%	6.5%	7.4%	0.9%	0.0%	2,282	10.9%
PPCC	47.3%	8.2%	15.0%	14.5%	11.8%	3.3%	0.0%	3,713	17.8%
RRCC	65.9%	10.5%	8.6%	3.9%	8.4%	2.7%	0.0%	2,836	13.6%
TSJC	45.4%	20.0%	12.2%	11.2%	9.4%	1.8%	0.0%	839	4.0%
CCCS	52.5%	8.0%	13.7%	7.7%	13.4%	4.6%	0.0%	20,893	100.0%



Credentials Awarded by Credential Level by College: 2015 – 2017

College	2015 Assoc Degrees	2015 Certs	2015 Total	2016 Assoc Degrees	2016 Certs	2016 Total	2015 - 2016 Pct Chg	2017 Bachelor Degrees	2017 Assoc Degrees	2017 Certs	2017 Total	2016 - 2017 Pct Chg
ACC	702	1,099	1,801	779	912	1,691	-6.1%	0	747	631	1,378	-18.5%
CCA	477	827	1,304	631	518	1,149	-11.9%	0	560	349	909	-20.9%
CCD	622	478	1,100	736	534	1,270	15.5%	4	744	551	1,299	2.3%
CNCC	119	126	245	138	109	247	0.8%	0	152	131	283	14.6%
FRCC	1,729	2,793	4,522	2,002	2,664	4,666	3.2%	0	1,899	3,646	5,545	18.8%
LCC	121	95	216	120	115	235	8.8%	0	125	108	233	-0.9%
MCC	181	273	454	176	263	439	-3.3%	0	193	231	424	-3.4%
NJC	246	140	386	277	513	790	104.7%	0	273	401	674	-14.7%
OJC	173	298	471	180	313	493	4.7%	0	206	272	478	-3.0%
PCC	710	1,461	2,171	704	1,661	2,365	8.9%	0	726	1,556	2,282	-3.5%
PPCC	1,374	1,245	2,619	1,569	1,178	2,747	4.9%	0	1,655	2,058	3,713	35.2%
RRCC	678	1,322	2,000	779	2,278	3,057	52.9%	0	669	2,167	2,836	-7.2%
TSJC	293	492	785	269	446	715	-8.9%	0	290	549	839	17.3%
CCCS	7,425	10,649	18,074	8,360	11,504	19,864	9.9%	4	8,239	12,650	20,893	5.2%



Credentials Awarded by College: 2012-13 through 2016-17

College	2012-13	2013-14	2014-15	2015-16	2016-17	Five-Yr Change
ACC	1,632	1,772	1,801	1,691	1,378	-15.6%
CCA	842	908	1,304	1,149	909	8.0%
CCD	967	1,050	1,100	1,270	1,299	34.3%
CNCC	212	203	245	247	283	33.5%
FRCC	3,444	3,581	4,522	4,666	5,545	61.0%
LCC	206	217	216	235	233	13.1%
MCC	396	418	454	439	424	7.1%
NJC	400	437	386	790	674	68.5%
OJC	514	498	471	493	478	-7.0%
PCC	2,076	2,345	2,171	2,365	2,282	9.9%
PPCC	2,319	2,639	2,619	2,747	3,713	60.1%
RRCC	1,982	2,254	2,000	3,057	2,836	43.1%
TSJC	739	777	785	715	839	13.5%
CCCS	15,729	17,099	18,074	19,864	20,893	32.8%

*The methodology for reporting SURDS degrees changed in 2013-14, the primary result of which was an increase in one-year certificates reported to CDHE.

Top Career-Oriented Credential Program by College: 2016-17

College	Program Name*	Number of Awards	% of College Awards (each, in case of tie)
ACC	Nursing Assistant/Aide and Patient Care Assistant/Aide	146	14.3%
CCA	Emergency Medical Technician	91	17.8%
CCD	Nursing Assistant/Aide and Patient Care Assistant/Aide	167	22.8%
CNCC	Nursing Assistant/Aide and Patient Care Assistant/Aide	39	20.0%
FRCC	Welder and Business Administration and Management (tie)	631	15.1%
LCC	Registered Nursing/Registered Nurse	48	31.8%
MCC	Nursing Assistant/Aide and Patient Care Assistant/Aide	75	25.9%
NJC	Automobile Mechanics Technology and Medium/Heavy Vehicle and Truck Technology (tie)	86	17.2%
OJC	Nursing Assistant/Aide and Patient Care Assistant/Aide	45	13.9%
PCC	Business/Office Automation/Technology/Data Entry	445	22.9%
PPCC	Registered Nursing/Registered Nurse	312	11.9%
RRCC	Business Administration and Management, General	253	10.5%
TSJC	Lineworker and Automobile Mechanics Technology (tie)	98	15.1%

* Excludes AA, AS, and AGS degrees

Top Career-Oriented Credential Programs for CCCS by Type of Credential: 2016-17

Program Name	Number of Awards	Percent of CCCS Total
BAS Degrees		
Dental Hygiene/Hygienist	4	100.0%
AAS Degrees		
Registered Nursing/Registered Nurse	517	18.0%
Accounting Technology/Technician and Bookkeeping	124	4.3%
Radiologic Technology/Science - Radiographer	98	3.4%
Computer and Information Sciences, General	94	3.3%
Automobile/Automotive Mechanics Technology/Technician	91	3.2%
Total of Top Five AAS Degrees	924	32.2%
Two-Year Certificates		
Criminal Justice/Police Science	222	13.3%
Early Childhood Education and Teaching	147	8.8%
Registered Nursing/Registered Nurse	119	7.1%
Cosmetology/Cosmetologist, General	100	6.0%
Legal Assistant/Paralegal	87	5.2%
Total of Top Five Two-Year Certificates	675	40.3%
One-Year Certificates		
Nursing Assistant/Aide and Patient Care Assistant/Aide	1,086	9.9%
Welding Technology/Welder	1,062	9.7%
Automobile/Automotive Mechanics Technology/Technician	997	9.1%
Business Administration and Management, General	983	9.0%
Emergency Medical Technology/Technician (EMT Paramedic)	942	8.6%
Total of Top Five One-Year Certificates	5,070	46.2%

* Excludes AA, AS, and AGS degrees

Degrees with Designation Awarded: 2012-13 through 2016-17

Designation*	2012-13	2013-14	2014-15	2015-16	2016-17	Total	Designation as % of Total
Agricultural Business			3	9	9	21	0.5%
Agriculture Education				3	3	6	0.1%
Animal Science		1	2	6	8	17	0.4%
Anthropology	4	7	11	15	18	55	1.3%
Art History				1	3	4	0.1%
Biology				6	16	22	0.5%
Business	352	344	340	414	386	1,836	42.6%
Chemistry				2	1	3	0.1%
Communication			1	12	67	80	1.9%
Criminal Justice		12	52	83	104	251	5.8%
Early Child Teacher Ed				2	24	26	0.6%
Early Childhood Ed Agreement	45	36	41	33	29	184	4.3%
Economics	4	12	10	12	13	51	1.2%
Elementary Teacher Education				2	26	28	0.7%
Elementary Education Agreement	87	69	60	79	52	347	8.1%
Engineering Agreement**	9	6		6		21	0.5%
English				2	22	24	0.6%
French	1	1	4	2	5	13	0.3%
Geography				7	8	15	0.3%
Geology				3	4	7	0.2%
History	36	28	29	65	46	204	4.7%
Horticulture Business Management					1	1	0.0%
Mathematics	6	12	14	28	16	76	1.8%
Music				1	1	2	0.0%
Philosophy				7	14	21	0.5%
Political Science	3	7	17	18	22	67	1.6%
Psychology	81	118	129	193	229	750	17.4%
Sociology	3	13	13	25	29	83	1.9%
Soil & Crop Science			1	3	1	5	0.1%
Spanish	1	13	10	15	16	55	1.3%
Studio Art				4	24	28	0.7%
Theater				1	2	3	0.1%
Total	632	679	737	1,059	1,199	4,306	100.0%

*Includes degrees with designation and, in some years, statewide transfer agreements.

**Engineering is no longer a statewide transfer agreement.

Transfers

Student Transfers and Top Transfer Destinations, Including High School Students Academic Years 2013-14 through 2015-16

College	2013-2014 Total Transfers to Four- Year Institutions	2013-2014 Top Transfer Destination	2014-2015 Total Transfers to Four- Year Institutions	2014-2015 Top Transfer Destination	2015-2016 Total Transfers to Four- Year Institutions	2015-2016 Top Transfer Destination
ACC	1,496	MSU Denver	1,611	MSU Denver	1,700	MSU Denver
CCA	1,051	UCD	1,063	MSU Denver	1,215	MSU Denver
CCD	1,662	MSU Denver	1,566	MSU Denver	1,473	MSU Denver
CNCC	186	CMU	180	CMU	173	CMU
FRCC	2,704	CSU - Ft Collins	2,589	CSU - Ft Collins	3,037	CSU - Ft Collins
LCC	143	UCCS	130	Adams State U	123	UCCS
MCC	257	UNC	252	CSU - Ft Collins	271	CSU - Ft Collins
NJC	248	UNC	272	CSU - Ft Collins	257	CSU - Ft Collins
OJC	147	CSU - Pueblo	162	CSU - Pueblo	178	CSU - Pueblo
PCC	471	CSU - Pueblo	465	CSU - Pueblo	491	CSU - Pueblo
PPCC	1,488	UCCS	1,524	UCCS	1,642	UCCS
RRCC	1,050	MSU Denver	984	MSU Denver	926	MSU Denver
TSJC	242	Adams State U	251	Adams State U	258	Adams State U
CCCS	11,145	MSU Denver	11,049	MSU Denver	11,744	MSU Denver
Cohort/% Cohort	85,650	13.0%	82,022	13.5%	78,287	15.0%

Transfer data based on attendance at a four-year college – public or private – in the following fall, as reported by the National Student Clearinghouse. Not all institutions participate in NSC. The numbers in this table are consistent in methodology with similar tables in previous years' publications in that it includes high school students.

**Student Transfers and Top Transfer Destinations, Excluding High School Students
Academic Years 2013-14 through 2015-16**

College	2013-2014 Total Transfers to Four- Year Institutions	2013-2014 Top Transfer Destination	2014-2015 Total Transfers to Four- Year Institutions	2014-2015 Top Transfer Destination	2015-2016 Total Transfers to Four- Year Institutions	2015-2016 Top Transfer Destination
ACC	801	MSU Denver	769	MSU Denver	784	MSU Denver
CCA	1,034	MSU Denver	1,035	MSU Denver	1,205	MSU Denver
CCD	1,569	MSU Denver	1,321	MSU Denver	1,458	MSU Denver
CNCC	111	CMU	103	CMU	105	CMU
FRCC	2,285	CSU - Ft Collins	2,104	CSU - Ft Collins	2,238	CSU - Ft Collins
LCC	92	UCCS	67	UNC	68	UCCS
MCC	122	UNC	54	CSU - Ft Collins	42	MSU Denver, Regis, UCCS, UNC (tie)
NJC	170	UNC	189	CSU - Ft Collins	161	UNC
OJC	118	CSU - Pueblo	112	CSU - Pueblo	135	CSU - Pueblo
PCC	309	CSU - Pueblo	300	CSU - Pueblo	315	CSU - Pueblo
PPCC	1,283	UCCS	1,385	UCCS	1,320	UCCS
RRCC	972	MSU Denver	917	MSU Denver	853	MSU Denver
TSJC	126	Adams State U	111	Adams State U	95	Adams State U
CCCS	8,992	MSU Denver	8,467	MSU Denver	8,779	MSU Denver
Cohort/% Cohort	75,479	11.9%	70,707	12.0%	66,514	13.2%

*Transfer data based on attendance at a four-year college – public or private – in the following fall, as reported by the National Student Clearinghouse (NSC). Not all institutions participate in the NSC. The numbers in this chart are lower than the preceding table and those in previous years because high school students are excluded from the cohort and transfer numbers. The succeeding tables on transfers are based on the cohort that excludes high school students.

**Top Five Four-Year Transfer Destinations
From Fall 2015 to Fall 2016**

Transfer Destination	Transfer Students	% of Total Transfers to Four-Year Institutions
Metropolitan State University of Denver (MSU Denver)	1,806	20.5%
Colorado State University - Fort Collins (CSU)	1,021	11.6%
University of Colorado - Denver (UCD)	1,006	11.4%
University of Colorado - Colorado Springs (UCCS)	876	9.9%
University of Colorado - Boulder (CU)	583	6.6%
Total of Top Five Destinations	5,292	60.1%

Transfers to Colorado Four-Year Institutions: Fall 2015 to Fall 2016

COLLEGE	Number of Transfer Students
METROPOLITAN STATE UNIVERSITY OF DENVER	1,806
COLORADO STATE UNIVERSITY	1,021
UNIVERSITY OF COLORADO DENVER	1,006
UNIVERSITY OF COLORADO COLORADO SPRINGS	876
UNIVERSITY OF COLORADO BOULDER	583
REGIS UNIVERSITY	449
UNIVERSITY OF NORTHERN COLORADO	409
COLORADO STATE UNIVERSITY - PUEBLO	290
COLORADO SCHOOL OF MINES	185
COLORADO MESA UNIVERSITY	137
COLORADO CHRISTIAN UNIVERSITY	122
COLORADO STATE UNIVERSITY - GLOBAL CAMPUS	121
ADAMS STATE UNIVERSITY	83
FORT LEWIS COLLEGE	62
COLORADO MOUNTAIN COLLEGE	56
UNIVERSITY OF DENVER	53
COLORADO TECHNICAL UNIVERSITY	47
WESTERN STATE COLORADO UNIVERSITY	34
COLORADO TECHNICAL UNIVERSITY - ONLINE	25
JOHNSON & WALES- DENVER	20
ROCKY MOUNTAIN COLLEGE OF ART & DESIGN	15
NAROPA UNIVERSITY	9
ADAMS STATE UNIVERSITY EXTENDED	6
COLORADO TECHNICAL UNIVERSITY - DENVER	5
UNIVERSITY OF DENVER- LAW	3
COLORADO COLLEGE	2
AMERICAN SENTINEL UNIVERSITY	1
COLLEGE AMERICA	1
ECOTECH INSTITUTE - AURORA	1
Total Transfers to Colleges in Colorado*	7,428

*The total may not sum to the number of students transferring to a Colorado college because NSC may report multiple transfer colleges for an individual student.

Colleges and universities enrolling about 98 percent of students in higher education institutions participate in the National Student Clearinghouse. In Colorado, the institutions with 1,000 or more students that do not report attendance and completion data to the Clearinghouse are Aspen University, Westwood College Denver North, The Art Institute of Colorado, Heritage College – Denver, and Concorde Career Institute – Denver.

**Top Five Four-Year Private Transfer Destinations
From Fall 2015 to Fall 2016**

Private Transfer Destination	Transfer Students	% of Total Transfers to Private Four-Year Institutions
Regis University	449	32.5%
Colorado Christian University (CCU)	122	8.8%
Grand Canyon University	86	6.2%
University of Denver (DU)	56	4.0%
Colorado Technical University - All	47	3.4%
Total of Top Five Private Destinations	760	55.0%
Total Transfers to Four-Year Private Colleges	1,383	N/A

Number of Students Transferring with Fifteen or More Credit Hours, 2014 - 2016

College	Fall 2014 Transfers	Percent of Fall 2014 Transfers	Fall 2015 Transfers	Percent of Fall 2015 Transfers	Percent Change in Transfers	Fall 2016 Transfers	Percent of Total Fall 2016 Transfers	Percent Change in Transfers
ACC	642	80.1%	628	81.7%	-2.2%	641	81.8%	2.1%
CCA	593	57.4%	594	57.4%	0.2%	701	58.2%	18.0%
CCD	896	57.1%	827	62.6%	-7.7%	872	59.8%	5.4%
CNCC	98	88.3%	82	79.6%	-16.3%	89	84.8%	8.5%
FRCC	1,854	81.1%	1,767	84.0%	-4.7%	1,791	80.0%	1.4%
LCC	88	95.7%	66	98.5%	-25.0%	63	92.6%	-4.5%
MCC	113	92.6%	46	85.2%	-59.3%	39	92.9%	-15.2%
NJC	154	90.6%	175	92.6%	13.6%	154	95.7%	-12.0%
OJC	114	96.6%	109	97.3%	-4.4%	128	94.8%	17.4%
PCC	276	89.3%	267	89.0%	-3.3%	279	88.6%	4.5%
PPCC	1,117	87.1%	1,168	84.3%	4.6%	1,172	88.8%	0.3%
RRCC	857	88.2%	773	84.3%	-9.8%	709	83.1%	-8.3%
TSJC	108	85.7%	98	88.3%	-9.3%	86	90.5%	-12.2%
CCCS	6,910	76.8%	6,600	77.9%	-4.5%	6,724	76.6%	1.9%

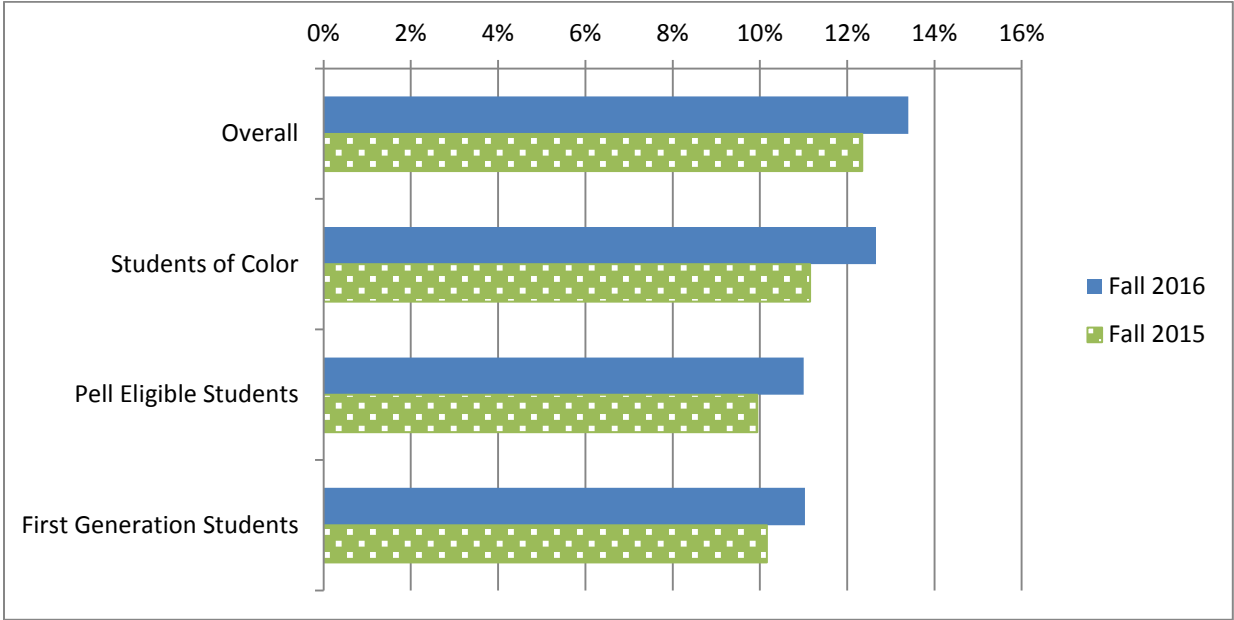
Fall 2015 & 2016 Transfers with 15 or More Credits, Overall and by Demographic Group

College	Fall 2015 Total	Fall 2015 Transfers Students of Color	Fall 2015 Transfers Pell Eligible Students	Fall 2015 Transfers First Gen Students	Fall 2016 Total	Fall 2016 Transfers Students of Color	Fall 2016 Transfers Pell Eligible Students	Fall 2016 Transfers First Gen Students	% Chg: Total	% Chg: Students of Color	% Chg: Pell Eligible Students	% Chg: First Gen Students
ACC	628	108	195	256	641	143	174	270	2.1%	32.4%	-10.8%	5.5%
CCA	594	309	182	341	701	378	218	399	18.0%	22.3%	19.8%	17.0%
CCD	827	391	403	435	872	426	372	466	5.4%	9.0%	-7.7%	7.1%
CNCC	82	22	29	35	89	20	22	47	8.5%	-9.1%	-24.1%	34.3%
FRCC	1,767	372	578	717	1,791	397	548	763	1.4%	6.7%	-5.2%	6.4%
LCC	66	26	26	24	63	28	29	24	-4.5%	7.7%	11.5%	0.0%
MCC	46	12	17	29	39	12	17	17	-15.2%	0.0%	0.0%	-41.4%
NJC	175	34	70	73	154	40	56	72	-12.0%	17.6%	-20.0%	-1.4%
OJC	109	49	50	58	128	47	54	56	17.4%	-4.1%	8.0%	-3.4%
PCC	267	117	157	124	279	116	161	123	4.5%	-0.9%	2.5%	-0.8%
PPCC	1,168	301	401	504	1,172	320	430	540	0.3%	6.3%	7.2%	7.1%
RRCC	773	163	233	323	709	159	180	299	-8.3%	-2.5%	-22.7%	-7.4%
TSJC	98	45	53	46	86	37	45	43	-12.2%	-17.8%	-15.1%	-6.5%
CCCS	6,600	1,949	2,394	2,965	6,724	2,123	2,306	3,119	1.9%	8.9%	-3.7%	5.2%

Fall 2015 and 2016 Transfer Rates, Overall and Specified Demographic Group, by College

College	Fall 2015 Total	Fall 2015 Students of Color	Fall 2015 Pell Eligible Students	Fall 2015 First Generation Students	Fall 2016 Total	Fall 2016 Students of Color	Fall 2016 Pell Eligible Students	Fall 2016 First Generation Students	% Point Change Total	% Point Change Students of Color	% Point Change Pell Eligible Students	% Point Change First Gen Students
ACC	11.8%	8.6%	10.5%	9.5%	13.0%	12.1%	11.3%	10.6%	1.1%	3.5%	0.7%	1.1%
CCA	12.8%	12.1%	8.7%	11.6%	15.6%	15.2%	12.2%	13.6%	2.8%	3.1%	3.5%	2.0%
CCD	14.0%	12.7%	12.5%	12.3%	14.8%	14.3%	13.1%	12.7%	0.8%	1.7%	0.6%	0.5%
CNCC	13.4%	18.0%	12.7%	10.1%	15.1%	17.9%	10.7%	12.8%	1.8%	-0.2%	-2.0%	2.7%
FRCC	13.6%	12.3%	11.2%	10.7%	14.5%	13.3%	12.2%	11.9%	0.9%	0.9%	1.0%	1.2%
LCC	15.4%	17.7%	10.7%	11.9%	15.1%	20.4%	13.6%	10.2%	-0.3%	2.8%	2.9%	-1.8%
MCC	5.9%	5.6%	4.3%	5.7%	5.7%	5.9%	5.0%	3.6%	-0.2%	0.2%	0.7%	-2.0%
NJC	15.5%	14.6%	14.8%	12.5%	16.1%	18.7%	14.9%	14.1%	0.6%	4.1%	0.2%	1.6%
OJC	12.5%	14.7%	9.9%	11.4%	14.9%	13.7%	10.9%	10.5%	2.4%	-0.9%	1.0%	-0.9%
PCC	7.1%	7.3%	6.2%	6.6%	8.1%	8.3%	7.4%	6.4%	1.0%	0.9%	1.1%	-0.2%
PPCC	11.7%	9.9%	8.7%	9.1%	12.9%	10.9%	10.3%	10.5%	1.1%	1.0%	1.6%	1.4%
RRCC	13.0%	11.9%	11.1%	10.4%	12.9%	11.8%	10.2%	10.1%	-0.1%	-0.1%	-0.9%	-0.3%
TSJC	9.0%	8.3%	8.0%	7.4%	9.0%	8.2%	8.3%	7.3%	0.0%	-0.1%	0.3%	-0.1%
CCCS	12.3%	11.1%	9.9%	10.2%	13.4%	12.7%	11.0%	11.0%	1.1%	1.5%	1.1%	0.9%

Comparison of Fall 2015 and Fall 2016 CCCS Transfer Rates by Demographic Groupings



Graduation Rates

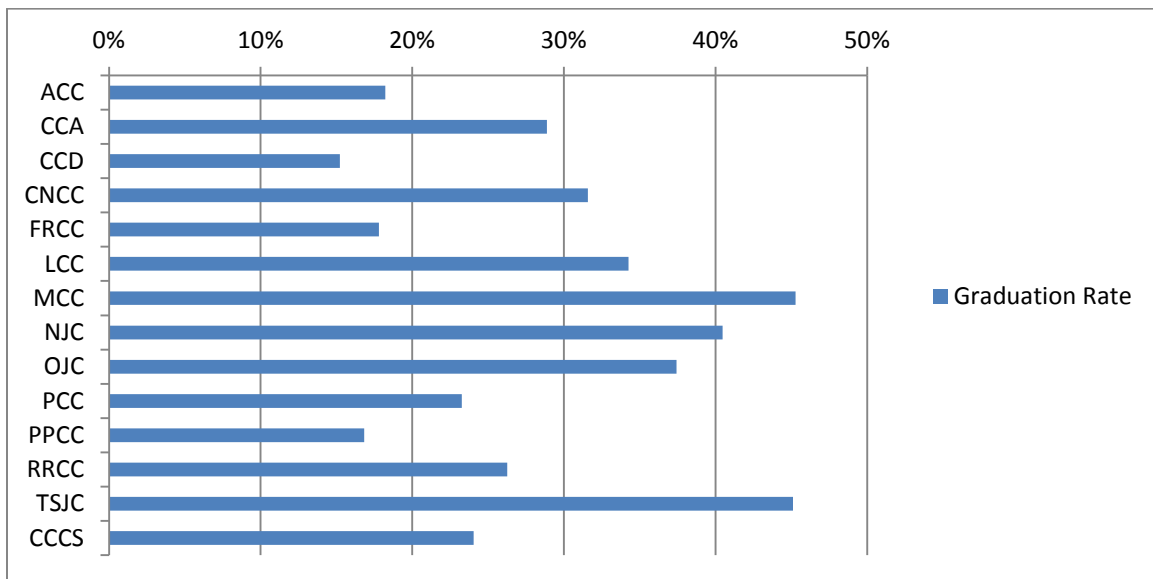
Three-Year Graduation Rate

First-time, Full-time, Degree/Certificate-seeking Students

Fall 2013 Cohort Graduating by Summer 2016

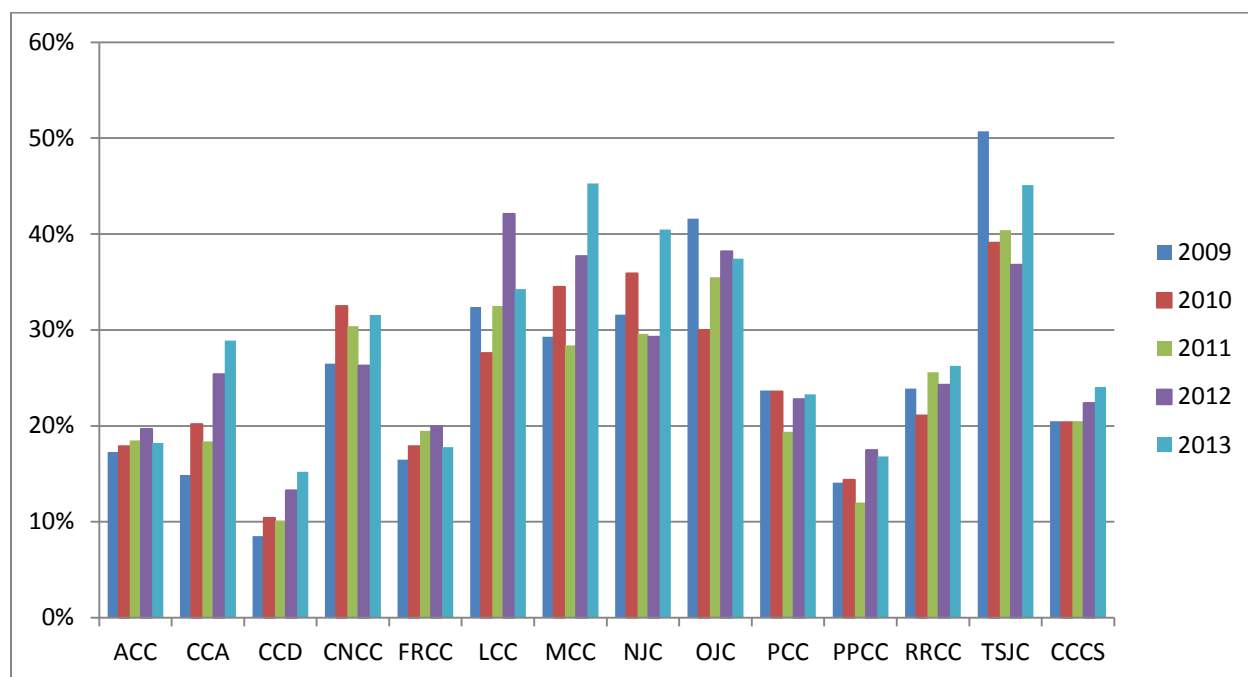
College	2013 Cohort	Graduates	Graduation Rate	2013 Cohort as % of Fall 2013 Headcount
ACC	439	80	18.2%	3.8%
CCA	322	93	28.9%	4.1%
CCD	407	62	15.2%	3.9%
CNCC	133	42	31.6%	11.7%
FRCC	1,090	194	17.8%	5.6%
LCC	143	49	34.3%	15.8%
MCC	53	24	45.3%	2.9%
NJC	435	176	40.5%	22.2%
OJC	211	79	37.4%	14.6%
PCC	305	71	23.3%	4.5%
PPCC	1,206	203	16.8%	8.2%
RRCC	529	139	26.3%	6.2%
TSJC	266	120	45.1%	14.9%
CCCS	5,539	1,332	24.0%	6.3%

Preliminary IPEDS data for all but PCC and RRCC, for which the data source is a preliminary CDHE report



Three-Year Graduation Rate Trends
Full-time, First-time, Degree/Certificate-seeking Students
2009 Cohort through 2013 Cohort

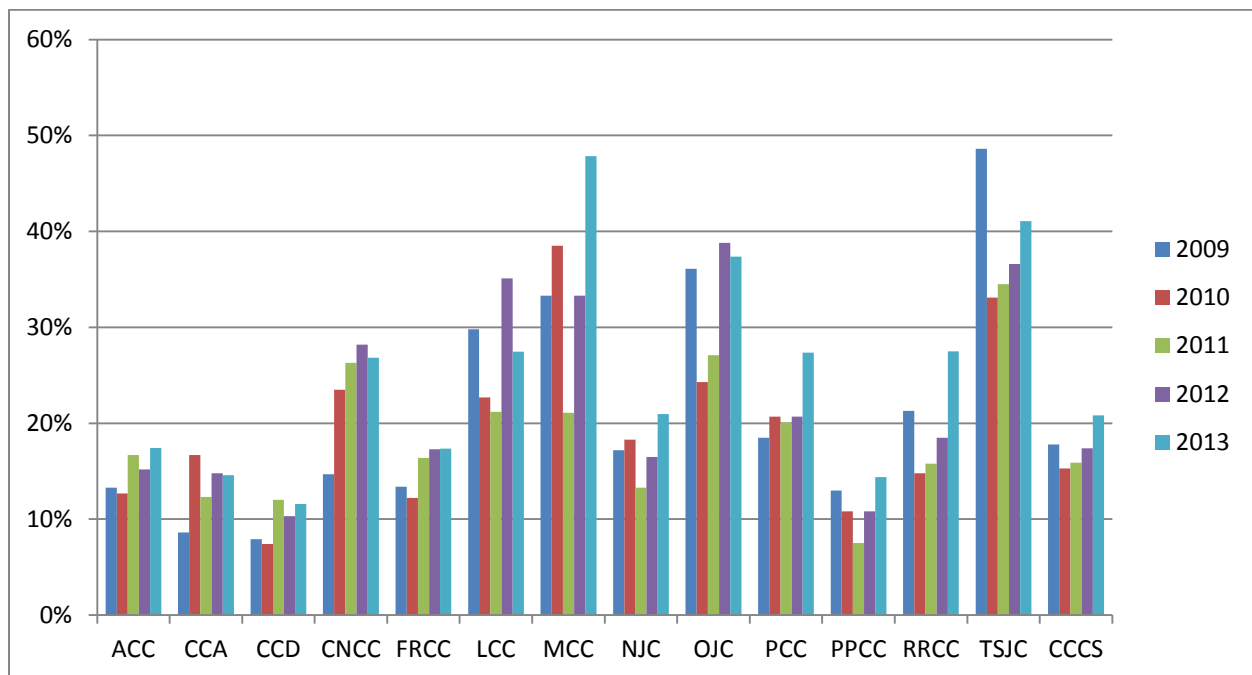
College	2009 Cohort Graduate by Summer 2012	2010 Cohort Graduate by Summer 2013	2011 Cohort Graduate by Summer 2014	2012 Cohort Graduate by Summer 2015	2013 Cohort Graduate by Summer 2016
ACC	17.3%	17.9%	18.5%	19.7%	18.2%
CCA	14.9%	20.2%	18.4%	25.4%	28.9%
CCD	8.5%	10.4%	10.1%	13.3%	15.2%
CNCC	26.5%	32.5%	30.4%	26.3%	31.6%
FRCC	16.5%	17.9%	19.5%	20.0%	17.8%
LCC	32.4%	27.6%	32.5%	42.1%	34.3%
MCC	29.3%	34.5%	28.4%	37.7%	45.3%
NJC	31.6%	35.9%	29.6%	29.3%	40.5%
OJC	41.6%	30.0%	35.5%	38.2%	37.4%
PCC	23.7%	23.6%	19.4%	22.8%	23.3%
PPCC	14.1%	14.4%	12.0%	17.5%	16.8%
RRCC	23.9%	21.1%	25.6%	24.3%	26.3%
TSJC	50.7%	39.1%	40.4%	36.8%	45.1%
CCCS	20.5%	20.4%	20.5%	22.4%	24.0%



**Three-year Graduation Rate Trends: Students of Color
2009 Cohort through 2013 Cohort**

College	2009 Cohort Graduate by Summer 2012	2010 Cohort Graduate by Summer 2013	2011 Cohort Graduate by Summer 2014	2012 Cohort Graduate by Summer 2015	2013 Cohort Graduate by Summer 2016
ACC	13.3%	12.7%	16.7%	15.2%	17.4%
CCA	8.6%	16.7%	12.3%	14.8%	14.6%
CCD	7.9%	7.4%	12.0%	10.3%	11.6%
CNCC	14.7%	23.5%	26.3%	28.2%	26.8%
FRCC	13.4%	12.2%	16.4%	17.3%	17.4%
LCC	29.8%	22.7%	21.2%	35.1%	27.5%
MCC	33.3%	38.5%	21.1%	33.3%	47.8%
NJC	17.2%	18.3%	13.3%	16.5%	21.0%
OJC	36.1%	24.3%	27.1%	38.8%	37.4%
PCC	18.5%	20.7%	20.1%	20.7%	27.4%
PPCC	13.0%	10.8%	7.5%	10.8%	14.4%
RRCC	21.3%	14.8%	15.8%	18.5%	27.5%
TSJC	48.6%	33.1%	34.5%	36.6%	41.1%
CCCS	17.8%	15.3%	15.9%	17.4%	20.8%

“Student of color” includes any student who reported race/ethnicity as American Indian or Alaska Native, Asian, Black or African American, Hispanic, or Native Hawaiian or Other Pacific Islander, or who reported more than one race.

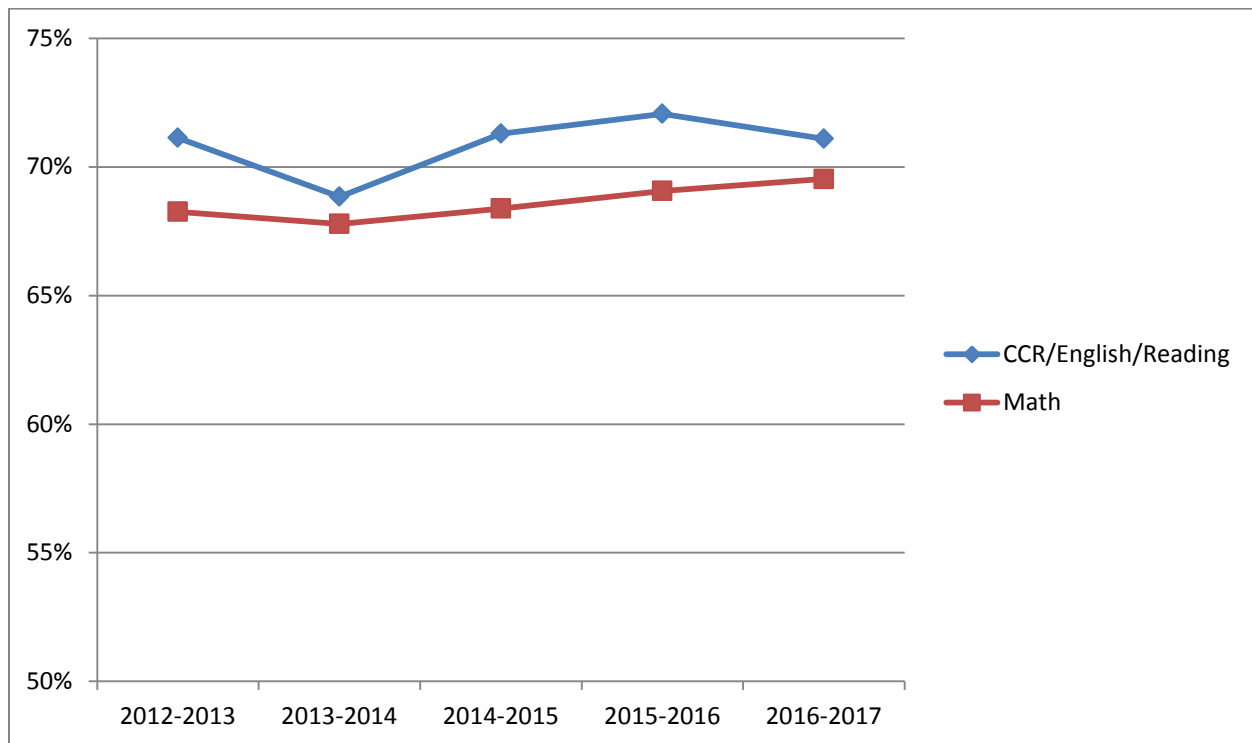


Developmental Education

Developmental Course Completion Rates by Subject Academic Years 2011-12 through 2016-17

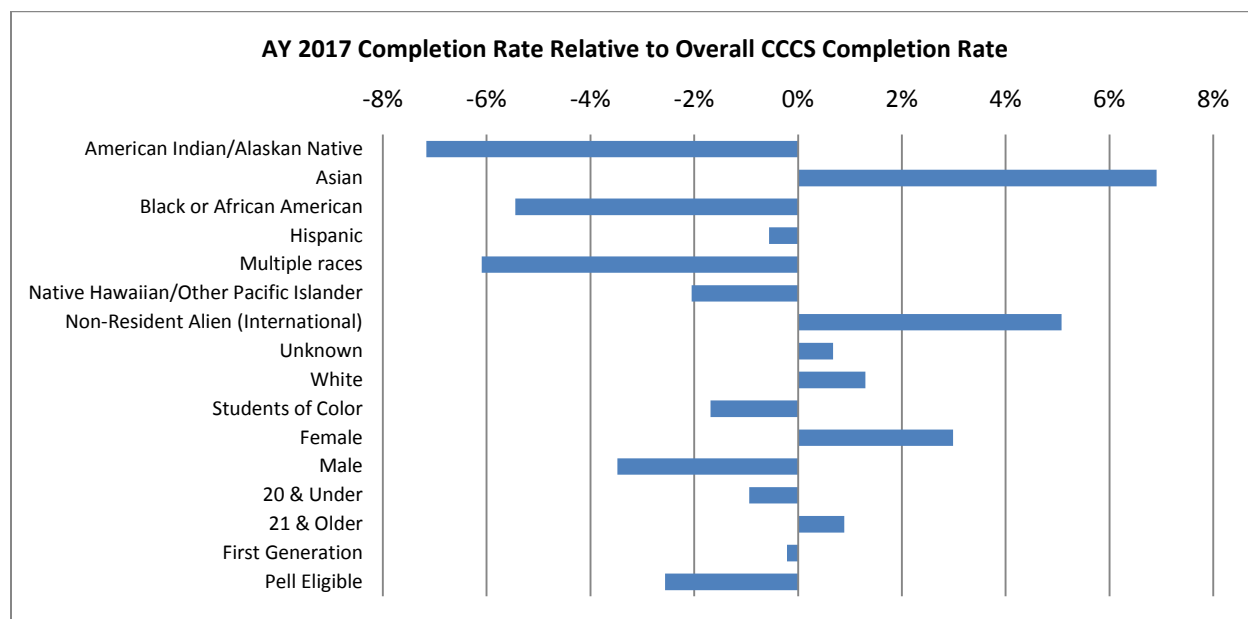
Subject	2012-2013	2013-2014	2014-2015	2015-2016	2016-2017
CCR/English/Reading	71.1%	68.8%	71.3%	72.1%	71.1%
Math	68.3%	67.8%	68.4%	69.1%	69.5%
CCCS	69.5%	68.2%	69.4%	70.0%	70.0%

Note: Course completion is defined as receiving a passing grade — an A, B, C, or Satisfactory — at the end of the term. The cohort for determining the rates is the sum of the passing and failing grades. College composition and reading (CCR) was introduced in a limited fashion in 2013-14 and replaced most reading and English developmental courses in 2014-15. The “CCR/English/Reading” line consolidates the three courses prior to 2015-16 to aid in comparison across years.



Developmental Course Completion Rates by Student Demographic
Academic Years 2014-15 through 2016-17

Data Element	AY 2015	AY15 Diff from Overall	AY 2016	AY16 Diff from Overall	AY 2017	AY17 Diff from Overall
Overall	69.4%	N/A	70.0%	N/A	70.0%	N/A
American Indian/Alaskan Native	64.0%	-5.4%	65.9%	-4.2%	62.8%	-7.2%
Asian	75.2%	5.8%	77.6%	7.5%	76.9%	6.9%
Black or African American	58.9%	-10.4%	61.1%	-9.0%	64.5%	-5.4%
Hispanic	68.4%	-0.9%	69.4%	-0.6%	69.4%	-0.6%
Multiple races	67.4%	-1.9%	64.4%	-5.7%	63.9%	-6.1%
Native Hawaiian/Other Pacific Islander	70.5%	1.1%	65.3%	-4.7%	67.9%	-2.0%
Non-Resident Alien (International)	74.6%	5.3%	75.4%	5.3%	75.1%	5.1%
Unknown	69.2%	-0.2%	68.3%	-1.7%	70.7%	0.7%
White	71.7%	2.4%	72.2%	2.1%	71.3%	1.3%
Students of Color	66.5%	-2.8%	67.6%	-2.4%	68.3%	-1.7%
Female	73.0%	3.7%	74.0%	4.0%	73.0%	3.0%
Male	64.9%	-4.5%	65.3%	-4.8%	66.5%	-3.5%
20 & Under	67.9%	-1.5%	68.8%	-1.2%	69.1%	-0.9%
21 & Older	70.6%	1.3%	71.2%	1.1%	70.9%	0.9%
First Generation	68.4%	-0.9%	69.7%	-0.4%	69.8%	-0.2%
Pell Eligible	67.7%	-1.7%	68.5%	-1.5%	67.4%	-2.6%
Math	68.4%	-1.0%	69.1%	-1.0%	69.5%	-0.5%
English/Reading/College Composition	71.3%	1.9%	72.1%	2.0%	71.1%	1.1%



Developmental Education Course Completion Rates by College – All Subjects
Academic Years 2012-13 through 2016-17

College	2012-2013	2013-2014	2014-2015	2015-2016	2016-2017
ACC	79.0%	72.9%	71.4%	76.3%	76.8%
CCA	72.0%	66.7%	75.8%	80.2%	76.1%
CCD	63.6%	63.7%	66.7%	70.7%	75.0%
CNCC	75.8%	68.8%	83.3%	82.7%	77.1%
FRCC	73.1%	73.3%	72.4%	70.8%	68.1%
LCC	60.6%	70.5%	63.9%	62.9%	78.5%
MCC	72.3%	75.4%	71.2%	75.1%	71.9%
NJC	75.3%	70.2%	62.7%	65.9%	60.9%
OJC	78.8%	74.8%	75.0%	63.9%	63.5%
PCC	78.1%	76.9%	71.8%	68.2%	69.2%
PPCC	62.8%	64.9%	66.0%	64.9%	63.2%
RRCC	71.5%	65.4%	63.1%	63.6%	65.1%
TSJC	74.3%	69.8%	71.5%	65.6%	74.6%
CCCS	69.5%	68.2%	69.4%	70.0%	70.0%

Note: Course completion is defined as a passing grade -- an A, B, C, or Satisfactory -- at the end of term.
The cohort for determining the rate is the number of passing and failing grades.

Percent of Students Enrolled in Developmental Courses by College
Academic Years 2012-13 through 2016-17

College	2012-2013	2013-2014	2014-2015	2015-2016	2016-2017	Five-Yr % Point Change
ACC	15.1%	13.5%	10.3%	8.8%	8.5%	-6.6%
CCA	25.8%	21.5%	20.8%	18.6%	19.5%	-6.3%
CCD	50.1%	41.0%	36.0%	35.1%	34.6%	-15.5%
CNCC	14.2%	14.0%	13.7%	12.2%	12.5%	-1.7%
FRCC	24.2%	21.3%	17.8%	16.8%	15.5%	-8.7%
LCC	18.4%	13.8%	14.2%	14.1%	14.6%	-3.8%
MCC	11.2%	9.3%	7.5%	6.8%	8.0%	-3.2%
NJC	18.4%	17.7%	15.7%	13.8%	13.8%	-4.6%
OJC	21.5%	17.1%	19.0%	16.6%	14.5%	-7.0%
PCC	24.4%	19.0%	17.2%	17.6%	12.8%	-11.6%
PPCC	32.6%	30.7%	22.7%	21.9%	22.1%	-10.5%
RRCC	20.4%	19.2%	15.1%	13.9%	13.3%	-7.1%
TSJC	20.3%	15.9%	13.5%	12.2%	10.2%	-10.1%
CCCS	26.6%	22.9%	19.3%	18.0%	17.2%	-9.4%

**Percent of FTE Students Enrolled in Developmental Courses by College
Academic Years 2012-13 through 2016-17**

College	2012-2013	2013-2014	2014-2015	2015-2016	2016-2017	Five-Yr % Point Change
ACC	10.2%	8.9%	5.6%	5.0%	4.5%	-5.7%
CCA	17.3%	10.2%	7.1%	7.4%	8.2%	-9.1%
CCD	25.1%	19.4%	17.0%	15.2%	10.8%	-14.3%
CNCC	20.2%	7.0%	4.2%	4.4%	5.0%	-15.2%
FRCC	10.1%	8.9%	7.1%	6.8%	6.4%	-3.7%
LCC	5.6%	4.5%	4.3%	4.1%	4.4%	-1.2%
MCC	5.9%	4.2%	3.0%	2.9%	3.2%	-2.7%
NJC	8.8%	8.9%	6.5%	4.9%	4.8%	-4.0%
OJC	8.8%	6.4%	6.5%	5.6%	4.8%	-4.0%
PCC	14.3%	9.0%	8.0%	7.5%	5.6%	-8.7%
PPCC	14.4%	13.5%	8.5%	7.9%	8.2%	-6.2%
RRCC	8.9%	8.6%	6.3%	5.8%	5.3%	-3.6%
TSJC	8.1%	5.2%	4.6%	4.2%	3.3%	-4.8%
CCCS	13.4%	10.7%	8.1%	7.5%	6.8%	-6.6%

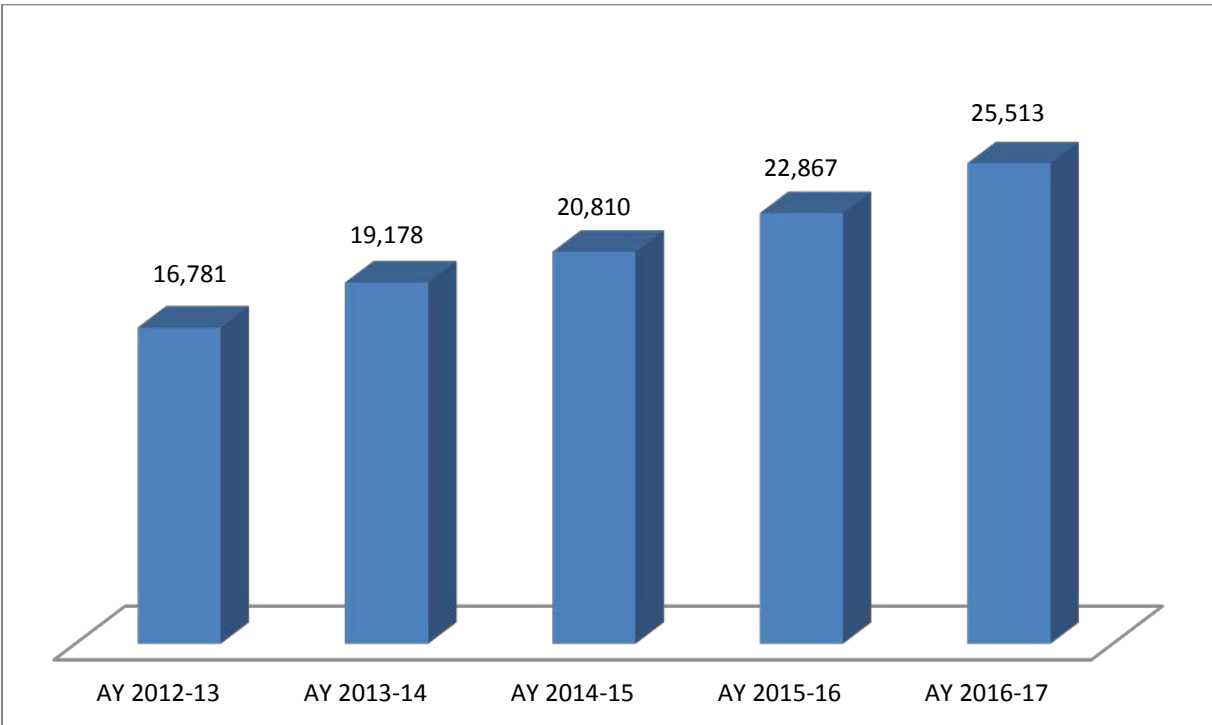
As reported to CDHE in the annual FTE submission

Concurrent Enrollment

High School Students Attending CCCS Colleges by College 2012-13 through 2016-17

College	AY 2013 Count	AY 2014 Count	AY 2014 % Chg	AY 2015 Count	AY 2015 % Chg	AY 2016 Count	AY 2016 % Chg	AY 2017 Count	AY 2017 % Chg	AY 2017 as % of Total Enroll	Five-Year Change
ACC	2,964	3,553	19.9%	3,581	0.8%	4,345	21.3%	5,025	15.7%	30.2%	69.5%
CCA	3,002	3,191	6.3%	3,238	1.5%	3,117	-3.7%	3,645	16.9%	33.1%	21.4%
CCD	1,554	1,851	19.1%	2,525	36.4%	2,277	-9.8%	2,120	-6.9%	16.3%	36.4%
CNCC	409	488	19.3%	511	4.7%	523	2.3%	490	-6.3%	29.1%	19.8%
FRCC	2,206	2,846	29.0%	3,203	12.5%	4,160	29.9%	4,981	19.7%	17.6%	125.8%
LCC	411	388	-5.6%	382	-1.5%	361	-5.5%	359	-0.6%	35.0%	-12.7%
MCC	750	856	14.1%	805	-6.0%	785	-2.5%	825	5.1%	42.4%	10.0%
NJC	418	405	-3.1%	418	3.2%	416	-0.5%	403	-3.1%	17.6%	-3.6%
OJC	516	584	13.2%	567	-2.9%	483	-14.8%	568	17.6%	30.5%	10.1%
PCC	1,155	1,210	4.8%	1,245	2.9%	1,521	22.2%	1,757	15.5%	20.3%	52.1%
PPCC	1,797	1,753	-2.4%	2,061	17.6%	2,264	9.8%	2,453	8.3%	13.1%	36.5%
RRCC	1,198	1,491	24.5%	1,569	5.2%	1,949	24.2%	2,110	8.3%	17.0%	76.1%
TSJC	401	562	40.1%	705	25.4%	666	-5.5%	777	16.7%	33.3%	93.8%
CCCS	16,781	19,178	14.3%	20,810	8.5%	22,867	9.9%	25,513	11.6%	21.3%	52.0%

*The numbers in this table are different from those in prior years because the source of data has changed, from the SURDS Student Course file to the SURDS Enrollment file. The change was made to include students who may be missed in the Student Course file. These numbers are slightly higher than those previously published.



CCCS High School Students Compared to Public High School Students

	Fall 2012 Enrollment/ AY 2012-13	Fall 2013 Enrollment/ AY 2013-14	Fall 2014 Enrollment/ AY 2014-15	Fall 2015 Enrollment/ AY 2015-16	Fall 2016 Enrollment/ AY 2016-17
Total Public High School	245,876	249,243	254,497	260,743	265,329
Percent Change Year to Year	1.1%	1.4%	2.1%	2.5%	1.8%
CCCS High School Students	16,781	19,178	20,810	22,867	25,513
Percent Change Year to Year	17.9%	14.3%	8.5%	9.9%	11.6%
CCCS as % of Public High School	6.8%	7.7%	8.2%	8.8%	9.6%

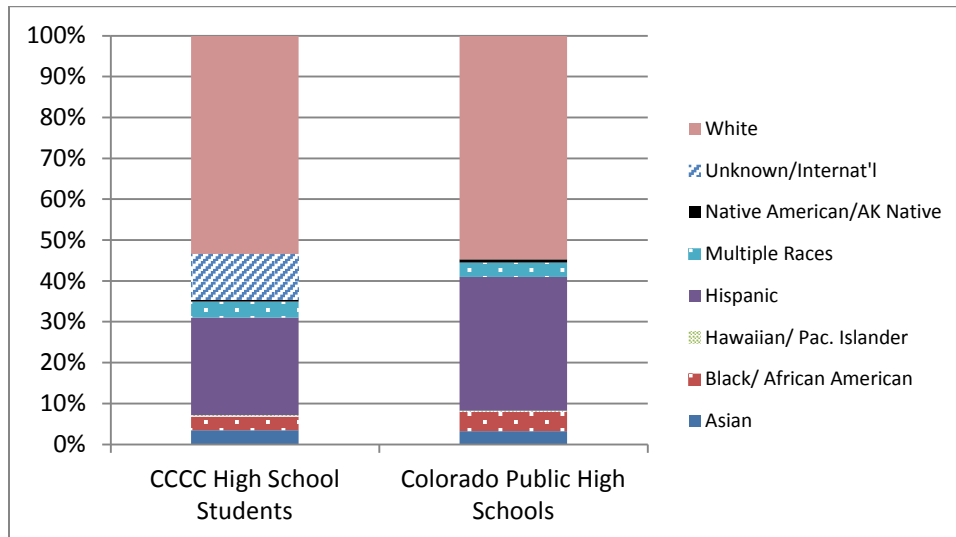
Race/Ethnicity of CCCS High School Students by College, AY 2016-17

College	Asian	Black/ African American	Hawaiian/ Pac. Islander	Hispanic	Multiple Races	Native American/ Alaska Native	Non- resident Alien	Unknown	White	Proportion of Students of Color
ACC	4.3%	2.5%	0.2%	12.3%	4.2%	0.4%	1.3%	11.0%	63.8%	26.8%
CCA	7.6%	10.8%	0.5%	30.8%	5.5%	0.3%	3.8%	6.7%	34.0%	59.5%
CCD	3.0%	7.1%	0.3%	51.6%	3.1%	0.7%	8.3%	11.8%	14.2%	74.5%
CNCC	0.4%	1.0%	0.0%	9.4%	1.2%	1.4%	1.0%	9.8%	75.7%	14.9%
FRCC	3.9%	1.0%	0.3%	19.6%	3.4%	0.4%	2.1%	7.1%	62.2%	30.7%
LCC	0.0%	0.6%	0.3%	26.5%	1.4%	0.0%	3.1%	3.9%	64.3%	29.9%
MCC	0.0%	0.4%	0.1%	20.8%	1.6%	0.4%	1.2%	7.5%	68.0%	25.2%
NJC	0.7%	0.2%	0.0%	11.4%	1.7%	0.2%	1.0%	6.9%	77.7%	15.5%
OJC	0.5%	0.4%	0.4%	39.4%	2.8%	0.5%	1.1%	7.7%	47.2%	47.7%
PCC	0.6%	0.6%	0.1%	29.9%	2.8%	1.4%	0.3%	1.8%	62.5%	36.0%
PPCC	2.5%	4.4%	0.3%	16.3%	6.8%	0.7%	0.8%	9.4%	58.8%	34.2%
RRCC	2.8%	1.0%	0.0%	20.7%	3.5%	0.8%	1.6%	11.4%	58.2%	32.5%
TSJC	0.8%	0.6%	0.0%	43.0%	0.6%	0.1%	0.9%	21.9%	32.0%	57.8%
CCCS	3.5%	3.4%	0.3%	23.9%	3.9%	0.5%	2.3%	8.9%	53.3%	38.9%

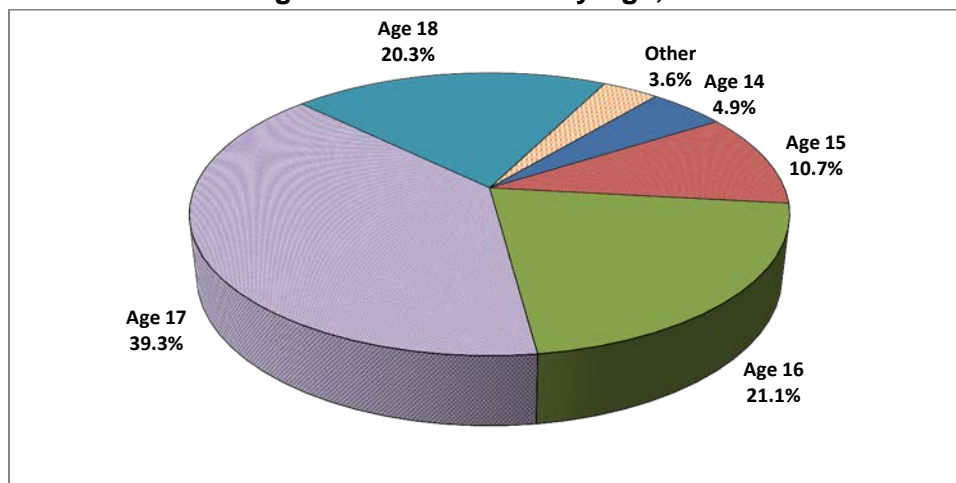
The calculation of the proportion of students of color excludes students who do not report race/ethnicity ("unknown" students).

Comparison of Race/Ethnicity of CCCS and Public High School Students, AY 2016-17

Race/ Ethnicity	CCCC High School Students	CO Public High School Students
Asian	3.5%	3.2%
Black/African American	3.4%	4.7%
Hawaiian/ Pacific Islander	0.3%	0.3%
Hispanic	23.9%	32.8%
Multiple Races	3.9%	3.5%
Native American/Alaska Native	0.5%	0.8%
Unknown/International	11.2%	0.0%
White	53.3%	54.7%



CCCC High School Students by Age, AY 2016-17



Age is calculated based on December 31, 2016.

**End-of-Term Completion Status for High School Students
by College and by Demographic Groupings, AY 2016-17**

College	Overall	Students of Color	First Generation	Male	Female
ACC	95.1%	93.0%	92.5%	93.8%	96.2%
CCA	88.7%	87.2%	87.1%	86.2%	90.4%
CCD	86.2%	85.5%	85.7%	84.4%	87.6%
CNCC	94.2%	91.4%	93.3%	93.4%	94.6%
FRCC	93.5%	92.3%	91.0%	93.0%	94.0%
LCC	95.9%	93.5%	95.5%	93.8%	97.7%
MCC	96.0%	92.4%	95.0%	95.2%	96.5%
NJC	96.7%	95.8%	94.7%	96.5%	96.8%
OJC	92.9%	93.3%	91.6%	89.2%	95.8%
PCC	95.1%	94.1%	93.8%	95.0%	95.2%
PPCC	91.0%	88.2%	87.7%	88.9%	92.7%
RRCC	96.4%	95.2%	95.0%	97.1%	95.7%
TSJC	93.9%	93.3%	92.4%	91.8%	95.2%
CCCS	92.9%	90.4%	90.7%	91.8%	93.8%

Includes only those courses in the SURDS course file where the student is identified as a high school student.

Number of Credentials Awarded to CCCS High School Students, AY 2016-17

Award	2016-17 Number of Awards	2016-17 Percent of Total	2015-16 Number of Awards	Percent Change: AY16 to AY17
1-yr Certificate	1,499	78.1%	1,144	31.0%
2-yr Certificate	76	4.0%	62	22.6%
	1,575	82.0%	1,206	30.6%
Associate of Applied Science (AAS)	16	0.8%	19	-15.8%
Associate of General Studies (AGS)	66	3.4%	41	61.0%
Associate of Arts (AA)	173	9.0%	152	13.8%
Associate of Science (AS)	90	4.7%	87	3.4%
	345	18.0%	299	15.4%
	1,920	100.0%	1,505	27.6%
	1,612	5.4%	1,243	29.7%

CCCS High School Student Enrollments (2015-2016)
Transferred to Four-Year Colleges in Succeeding Year

College	Transfers to 4-Year Colleges	Top College Destination
ACC	1,434	Colorado State University
CCA	891	University of Colorado Denver
CCD	389	University of Colorado Denver
CNCC	89	Colorado State University
FRCC	1,104	Colorado State University
LCC	61	West Texas A&M
MCC	234	Colorado State University
NJC	98	Colorado State University
OJC	47	Colorado State University
PCC	302	Colorado State University Pueblo
PPCC	376	University of Colorado Colorado Springs
RRCC	334	Colorado State University
TSJC	201	Adams State University
CCCS	5,560	Colorado State University

*This number is calculated using all high school students, not just seniors, as the number of seniors is not available. The number of unique high school transfer students is 5,475; some transferring high school students were enrolled in multiple CCCS colleges. Please also note that the number of high school transfers in this table does not equal the difference in the overall number of transfers in two earlier tables in this publication. A separate full-year cohort (2015-2016) was submitted to NSC to determine the number of transfers in this table (versus a fall cohort in the earlier tables).

CCCS High School Student Enrollment in CCCS College in Succeeding Year

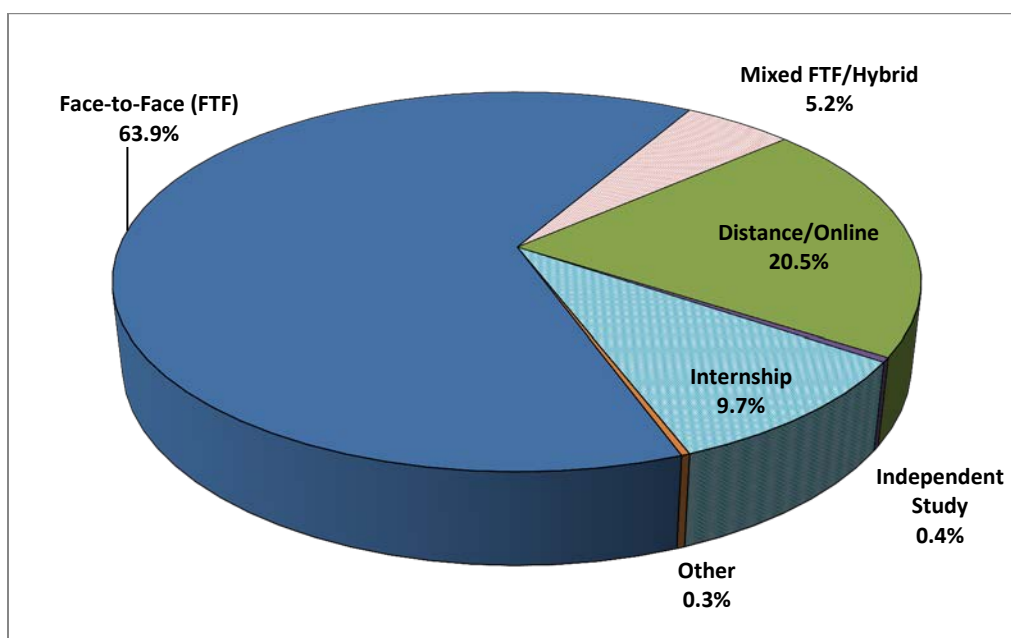
	2013 to 2014	2014 to 2015	2015 to 2016	2016 to 2017
Number of students	2,289	2,604	2,487	2,622

Note: A student was considered a high school student if he or she was indicated as such in a SURDS enrollment file in any term in a given academic year. A student was considered enrolled in a CCCS college in a succeeding year if the student was included in a SURDS enrollment file in any term in an academic year with a status other than high school.

Instructional Delivery Methods

CCCS Course Enrollments by Course Delivery Method, 2015 through 2017

Course Delivery Method	2016-17	Percent of Total	2015-16	Percent of Total	2014-15	Percent of Total
Face-to-Face (FTF)	305,894	63.9%	313,187	64.7%	337,791	65.5%
Mixed FTF/Hybrid	24,948	5.2%	25,963	5.4%	27,424	5.3%
Distance/Online	98,216	20.5%	98,169	20.3%	103,522	20.1%
Independent or Directed Study	1,871	0.4%	2,103	0.4%	2,399	0.5%
Internship or Practicum	46,233	9.7%	42,686	8.8%	40,248	7.8%
Other	1,399	0.3%	1,611	0.3%	4,680	0.9%
CCCS	478,561	100.0%	483,719	100.0%	516,064	100.0%



CCCS Course Offerings by Course Delivery Method, 2015 through 2017

Course Delivery Method	2016-17	2015-16	2014-15
Face-to-Face (FTF)	54.1%	55.0%	56.4%
Mixed FTF/Hybrid	5.1%	5.4%	5.4%
Distance/Online	27.9%	27.1%	25.8%
Independent or Directed Study	1.6%	1.6%	1.9%
Internship or Practicum	11.0%	10.5%	9.2%
Other	0.4%	0.5%	1.3%
CCCS	100.0%	100.0%	100.0%

Proportion of Online and Hybrid Course Enrollments, 2015 through 2017

College	2015 Percent Online	2015 Percent Hybrid	2015 Online + Hybrid	2016 Percent Online	2016 Percent Hybrid	2016 Online + Hybrid	2017 Percent Online	2017 Percent Hybrid	2017 Online + Hybrid
ACC	33.5%	3.3%	36.9%	31.9%	3.3%	35.2%	30.6%	3.2%	33.9%
CCA	18.7%	2.1%	20.8%	17.2%	1.7%	18.9%	16.7%	1.4%	18.1%
CCD	16.7%	3.9%	20.6%	17.0%	4.3%	21.3%	16.7%	3.6%	20.3%
CNCC	8.3%	2.1%	10.4%	8.6%	2.5%	11.1%	9.0%	2.6%	11.6%
FRCC	24.4%	5.7%	30.1%	23.4%	5.8%	29.2%	24.2%	6.3%	30.5%
LCC	9.3%	6.4%	15.7%	8.3%	7.1%	15.4%	6.6%	7.8%	14.4%
MCC	14.6%	21.7%	36.3%	18.3%	19.5%	37.8%	23.6%	19.7%	43.3%
NJC	5.1%	7.0%	12.0%	5.4%	6.5%	12.0%	5.6%	5.4%	11.0%
OJC	6.1%	9.1%	15.2%	6.1%	9.3%	15.4%	7.4%	8.1%	15.5%
PCC	11.9%	5.5%	17.4%	14.1%	5.8%	19.8%	15.2%	5.2%	20.4%
PPCC	22.8%	5.4%	28.3%	24.1%	6.1%	30.1%	25.0%	6.2%	31.2%
RRCC	17.9%	3.8%	21.6%	17.9%	3.8%	21.6%	17.7%	3.8%	21.4%
TSJC	11.1%	15.7%	26.8%	13.3%	14.1%	27.5%	12.0%	11.5%	23.5%
CCCS	20.1%	5.3%	25.4%	20.3%	5.4%	25.7%	20.5%	5.2%	25.7%

Proportion of FTE in Online and Hybrid Courses, 2015 through 2017

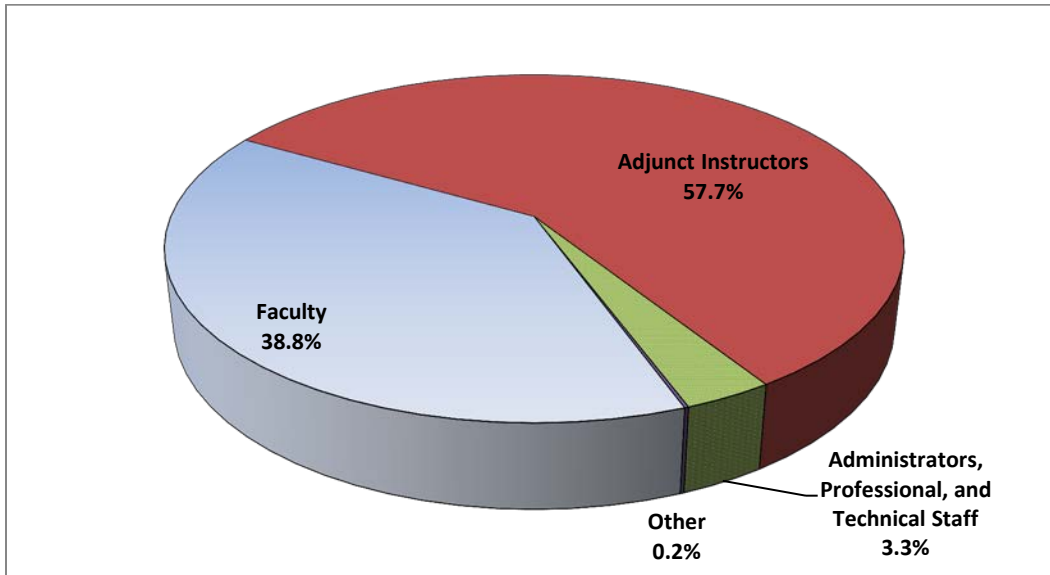
College	2015 Percent Online FTE	2015 Percent Hybrid FTE	2015 Online + Hybrid FTE	2016 Percent Online FTE	2016 Percent Hybrid FTE	2016 Online + Hybrid FTE	2017 Percent Online FTE	2017 Percent Hybrid FTE	2017 Online + Hybrid FTE	Online Pct Point Change 16 to 17	Hybrid Pct Point Change 16 to 17	Total Pct Point Change 16 to 17
ACC	28.6%	3.5%	32.1%	27.1%	3.4%	30.5%	26.9%	3.4%	30.3%	-0.2%	0.0%	-0.2%
CCA	18.6%	2.0%	20.7%	17.5%	1.8%	19.3%	16.9%	1.3%	18.2%	-0.6%	-0.5%	-1.0%
CCD	16.5%	4.1%	20.6%	16.9%	4.5%	21.4%	16.9%	3.8%	20.7%	0.0%	-0.7%	-0.7%
CNCC	9.6%	2.2%	11.8%	9.6%	2.6%	12.2%	10.4%	2.7%	13.1%	0.7%	0.1%	0.9%
FRCC	23.7%	5.8%	29.4%	22.9%	5.9%	28.8%	23.8%	6.5%	30.3%	0.9%	0.5%	1.4%
LCC	10.0%	7.4%	17.3%	8.6%	8.5%	17.1%	7.1%	9.2%	16.3%	-1.6%	0.7%	-0.8%
MCC	15.1%	23.6%	38.7%	19.5%	20.1%	39.7%	24.8%	20.4%	45.2%	5.3%	0.3%	5.6%
NJC	5.9%	8.4%	14.3%	6.2%	7.0%	13.3%	7.1%	6.1%	13.2%	0.8%	-0.9%	-0.1%
OJC	6.6%	9.9%	16.5%	6.7%	11.7%	18.4%	8.1%	10.4%	18.5%	1.4%	-1.3%	0.1%
PCC	16.1%	7.6%	23.8%	17.4%	7.6%	25.0%	18.6%	6.6%	25.1%	1.2%	-1.0%	0.1%
PPCC	22.5%	5.5%	28.0%	23.8%	6.0%	29.7%	24.8%	6.1%	30.9%	1.0%	0.1%	1.1%
RRCC	18.5%	3.8%	22.3%	18.2%	4.0%	22.3%	18.1%	4.0%	22.0%	-0.2%	0.0%	-0.2%
TSJC	11.9%	18.1%	30.0%	13.9%	15.7%	29.7%	12.3%	12.9%	25.2%	-1.6%	-2.8%	-4.5%
Total	20.0%	5.7%	25.7%	20.1%	5.7%	25.8%	20.6%	5.5%	26.1%	0.5%	-0.2%	0.3%

Faculty

Proportion of Credit Hours Taught by Staff Classification: 2016-17

College	Faculty	Adjunct Instructors	Administrators, Professional, and Technical Staff	Other
ACC	44.7%	50.1%	5.2%	0.0%
CCA	24.0%	73.1%	2.9%	0.0%
CCD	34.8%	63.0%	2.2%	0.0%
CNCC	59.1%	38.1%	2.8%	0.0%
FRCC	37.1%	62.1%	0.6%	0.2%
LCC	52.3%	35.3%	12.4%	0.0%
MCC	48.0%	48.5%	3.5%	0.0%
NJC	71.4%	20.7%	7.9%	0.0%
OJC	71.3%	15.8%	12.7%	0.3%
PCC	48.4%	46.4%	4.8%	0.4%
PPCC	42.5%	55.9%	1.3%	0.3%
RRCC	34.7%	61.8%	3.6%	0.0%
TSJC	57.4%	36.0%	6.6%	0.0%
CCCS	38.8%	57.7%	3.3%	0.2%

CCCOOnline credit hours are not included in the college percentages but are included in the CCCS line.

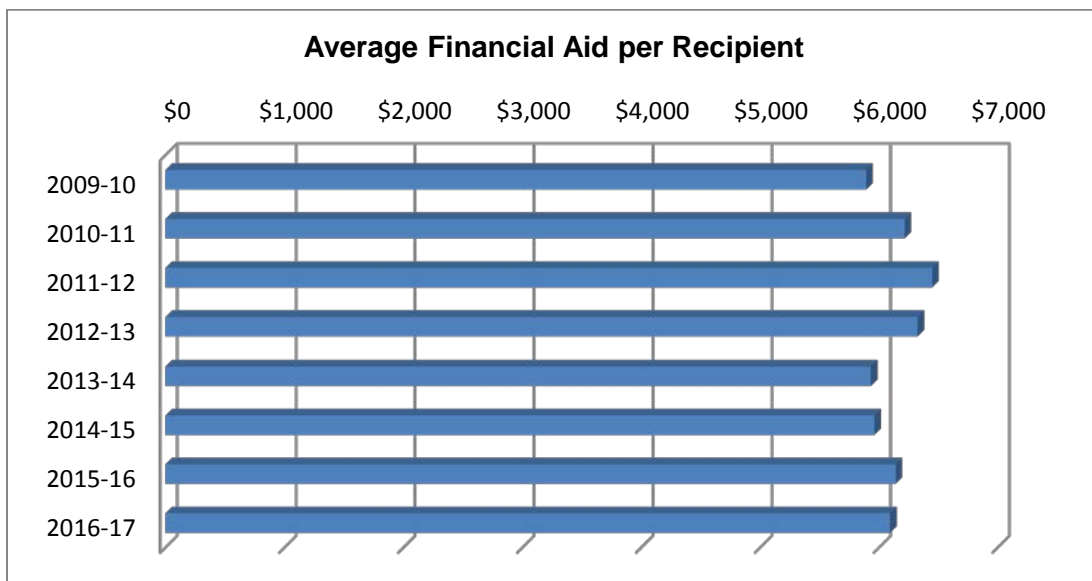


Financial Aid

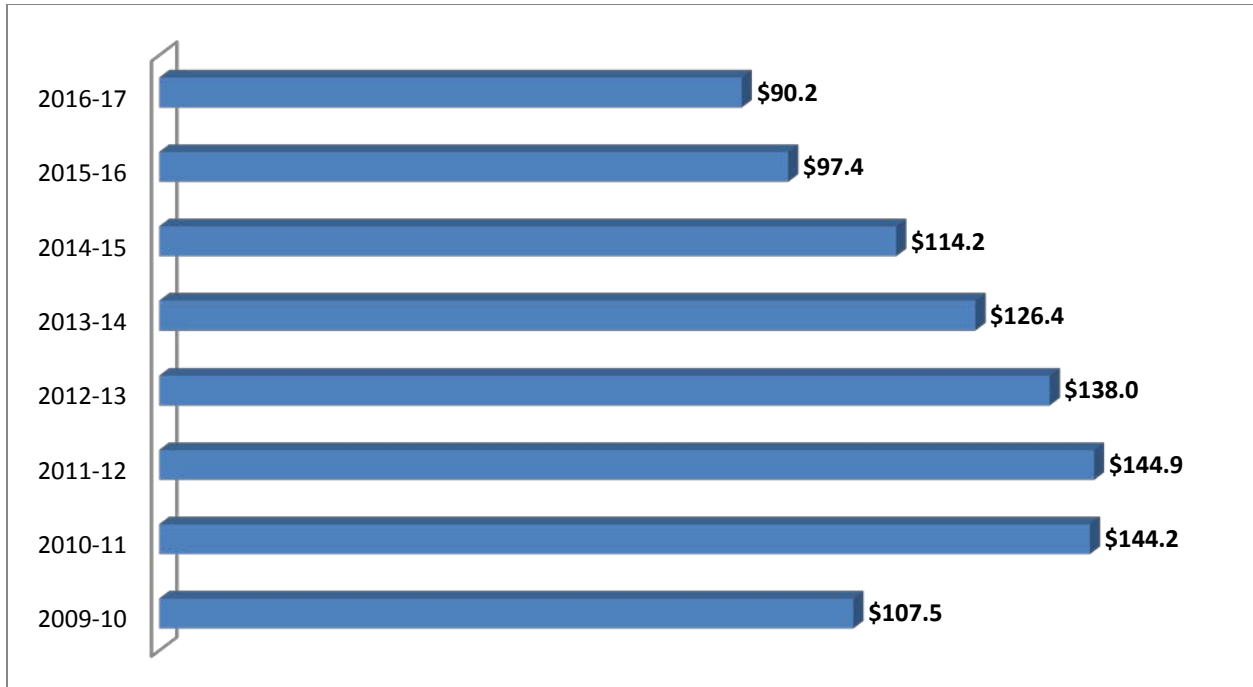
Total Financial Aid and Average Aid per Recipient, 2009 through 2017

Financial Aid Year	Total Financial Aid	Number of Recipients	Average Financial Aid per Recipient	Proportion of Non-high School Students Receiving Aid*
2009-10	\$328,112,094	55,685	\$5,892	45.2%
2010-11	\$403,920,724	64,983	\$6,216	50.0%
2011-12	\$427,169,370	66,248	\$6,448	51.2%
2012-13	\$402,139,950	63,573	\$6,326	51.9%
2013-14	\$347,901,611	58,653	\$5,932	51.7%
2014-15	\$321,463,656	53,928	\$5,961	51.5%
2015-16	\$291,848,638	47,531	\$6,140	49.2%
2016-17	\$276,527,257	45,380	\$6,094	48.8%

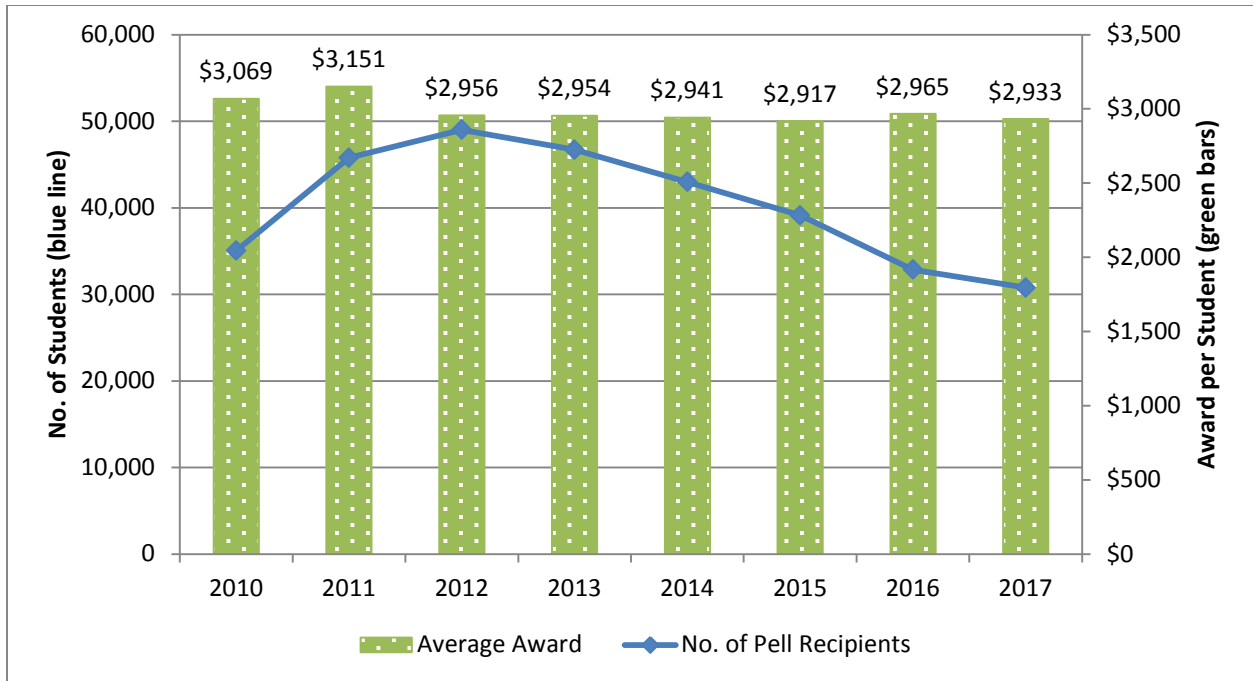
*The financial aid year consists of the fall of one calendar year and spring and summer of the succeeding calendar year. For example, 2016-17 is fall of 2016 and spring and summer of 2017. The normal academic year is summer and fall of one calendar year and spring of the succeeding year. This difference is not taken into account in the calculation of the proportion of students receiving financial aid; that is, the number of financial aid recipients is divided by the number of students in the similarly named academic year.



Total Pell Grants Awarded, 2010 through 2017
Millions of Dollars

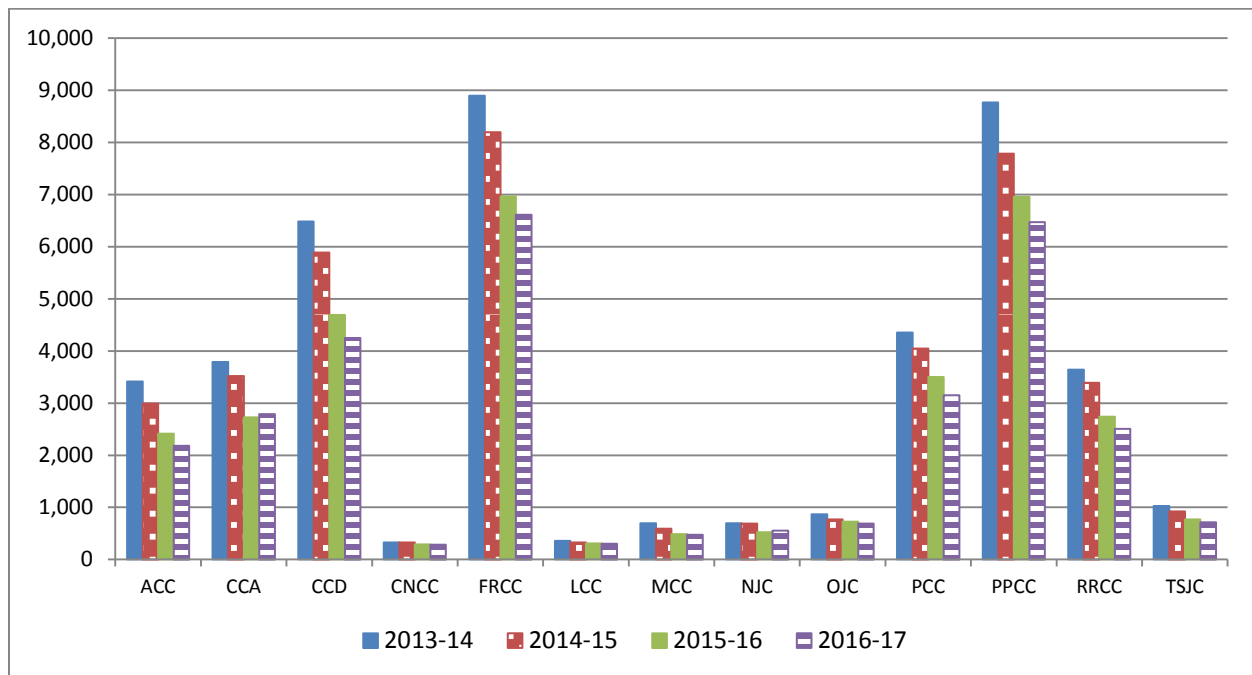


Total Pell Recipients and Average Award per Recipient, 2010 through 2017



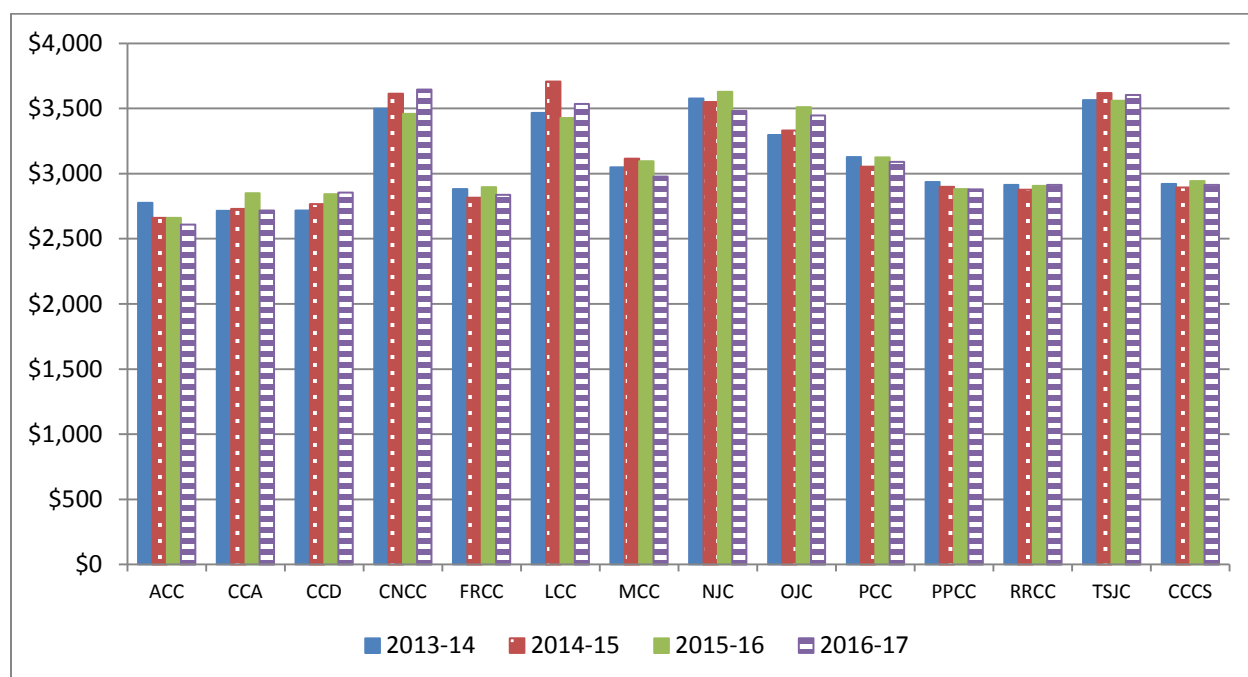
Number of Pell Recipients by College, 2014 through 2017

College	2013-14	2014-15	2015-16	2016-17
ACC	3,412	2,992	2,416	2,180
CCA	3,786	3,518	2,726	2,789
CCD	6,480	5,887	4,692	4,247
CNCC	326	325	292	283
FRCC	8,892	8,192	6,961	6,609
LCC	361	331	312	302
MCC	698	591	488	477
NJC	695	688	522	552
OJC	866	770	728	692
PCC	4,351	4,046	3,499	3,148
PPCC	8,763	7,781	6,956	6,472
RRCC	3,639	3,391	2,741	2,505
TSJC	1,026	923	767	715
CCCS	43,295	39,435	33,100	30,971

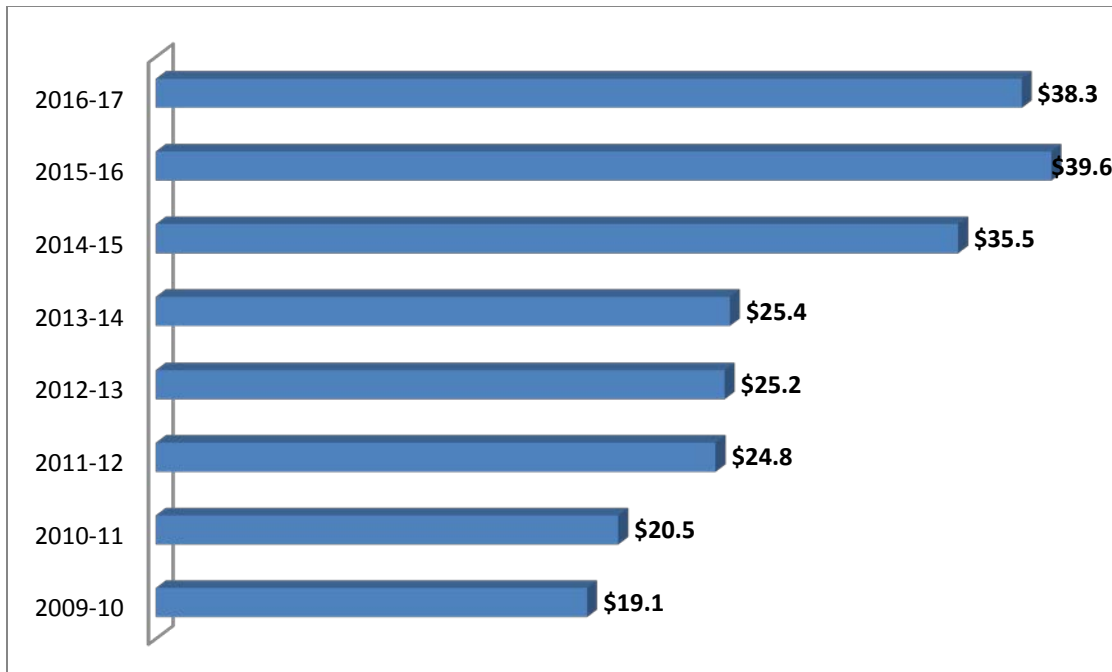


Average Pell Award per Recipient by College, 2014 through 2017

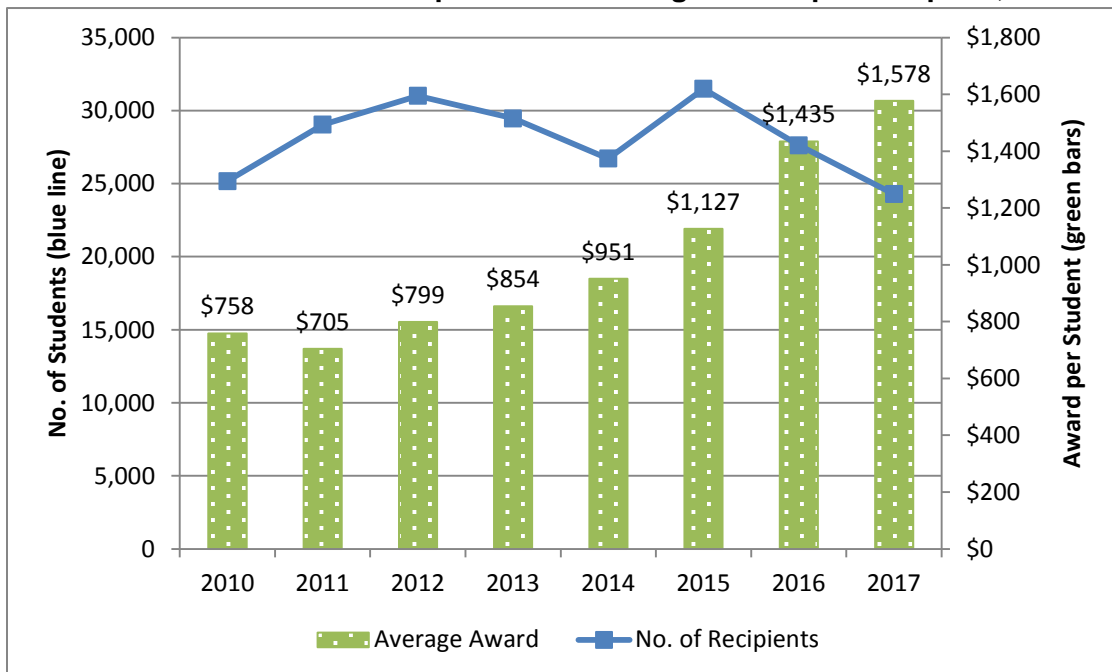
College	2013-14	2014-15	2015-16	2016-17
ACC	\$2,777	\$2,660	\$2,660	\$2,609
CCA	\$2,715	\$2,729	\$2,850	\$2,718
CCD	\$2,716	\$2,765	\$2,842	\$2,854
CNCC	\$3,498	\$3,614	\$3,459	\$3,646
FRCC	\$2,881	\$2,816	\$2,896	\$2,837
LCC	\$3,467	\$3,706	\$3,428	\$3,536
MCC	\$3,048	\$3,115	\$3,094	\$2,977
NJC	\$3,577	\$3,551	\$3,627	\$3,480
OJC	\$3,298	\$3,331	\$3,509	\$3,446
PCC	\$3,126	\$3,054	\$3,126	\$3,090
PPCC	\$2,935	\$2,898	\$2,882	\$2,880
RRCC	\$2,913	\$2,876	\$2,907	\$2,914
TSJC	\$3,565	\$3,619	\$3,560	\$3,602
CCCS	\$2,920	\$2,895	\$2,943	\$2,913



Total of Colorado Student Grants Awarded, 2010 through 2017
Millions of Dollars

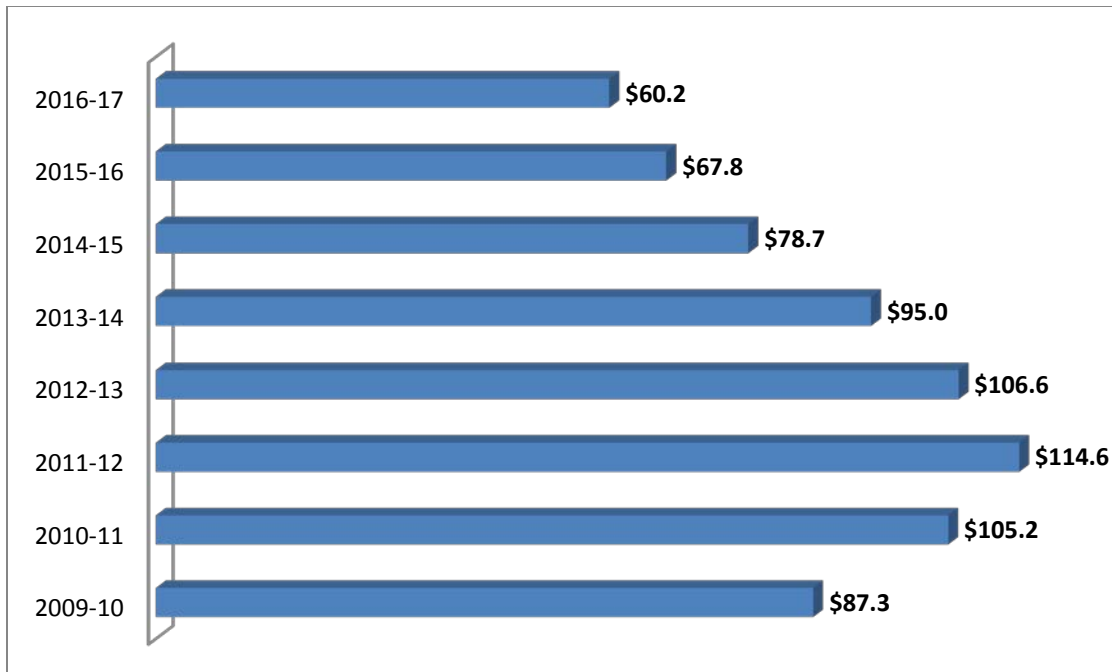


Total Colorado Student Grant Recipients and Average Award per Recipient, 2010 – 2017

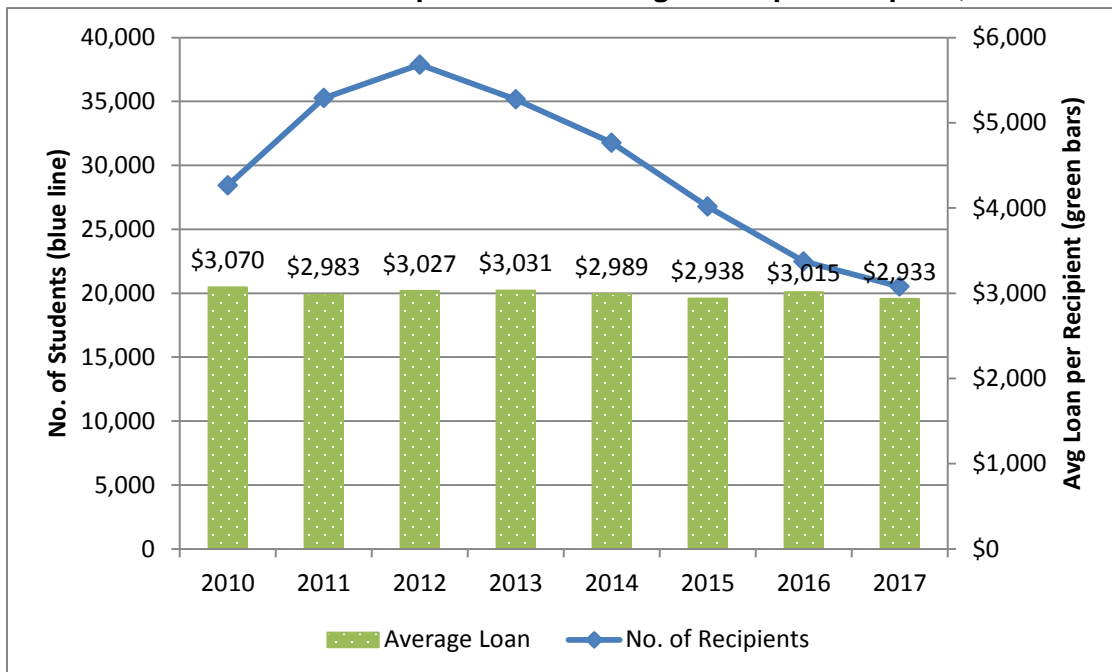


The Colorado Student Grant numbers for 2009-10 include the Governor's Opportunity Scholarship.

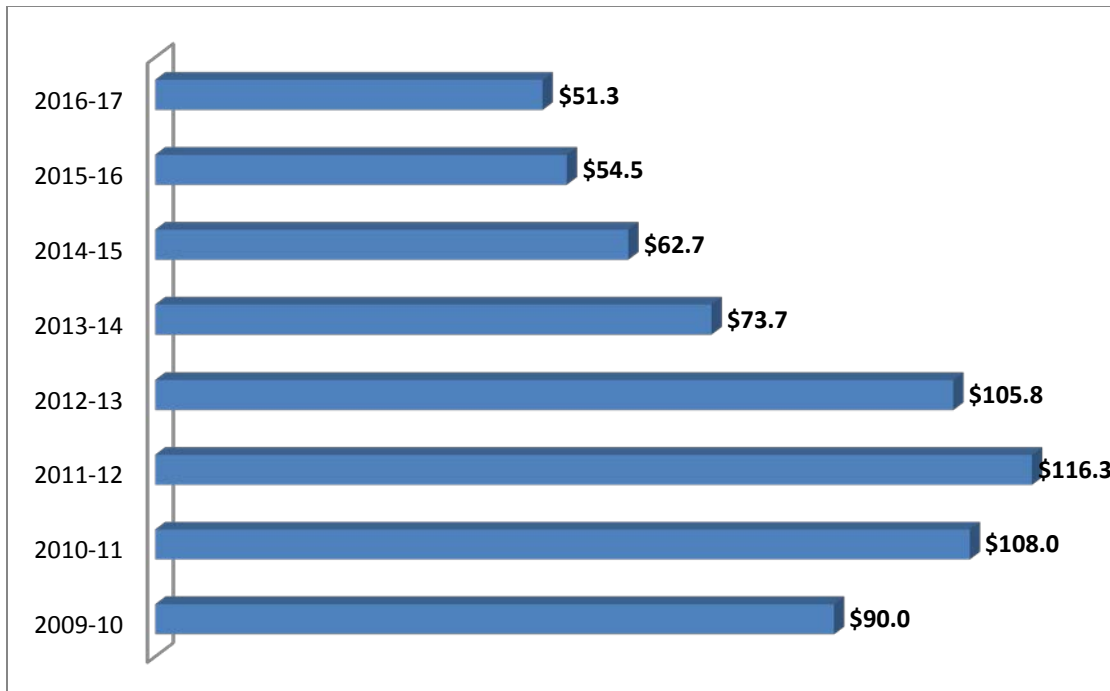
Total of Stafford Subsidized Loans Awarded, 2010 through 2017
Millions of Dollars



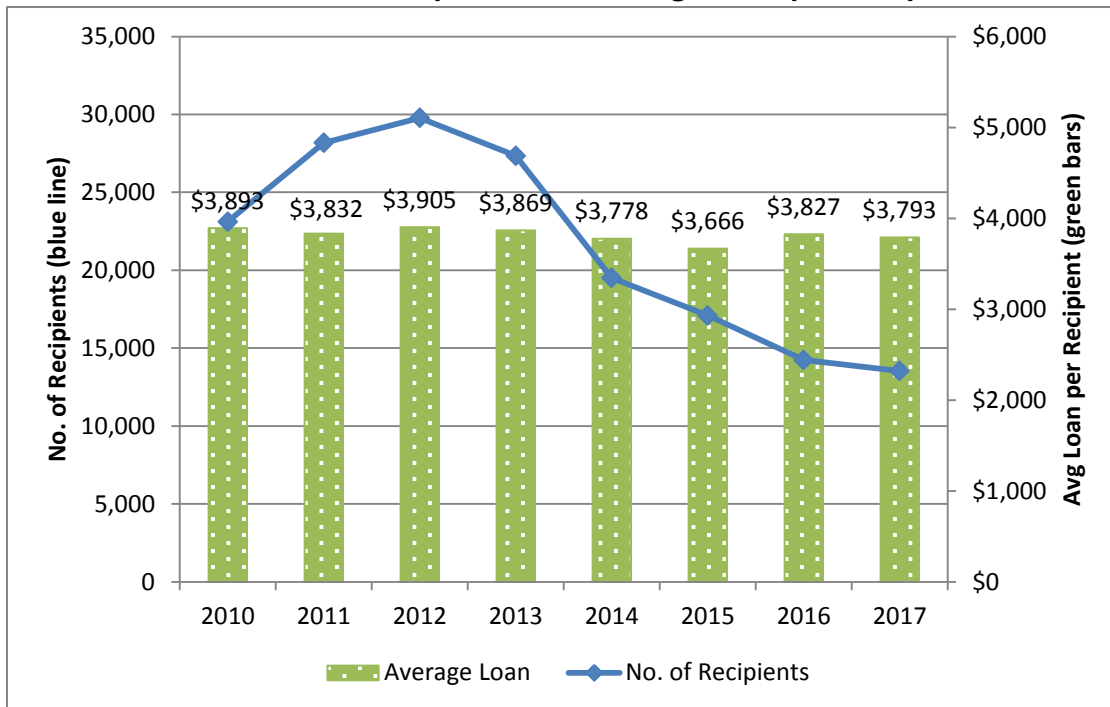
Subsidized Stafford Loan Recipients and Average Loan per Recipient, 2010 – 2017



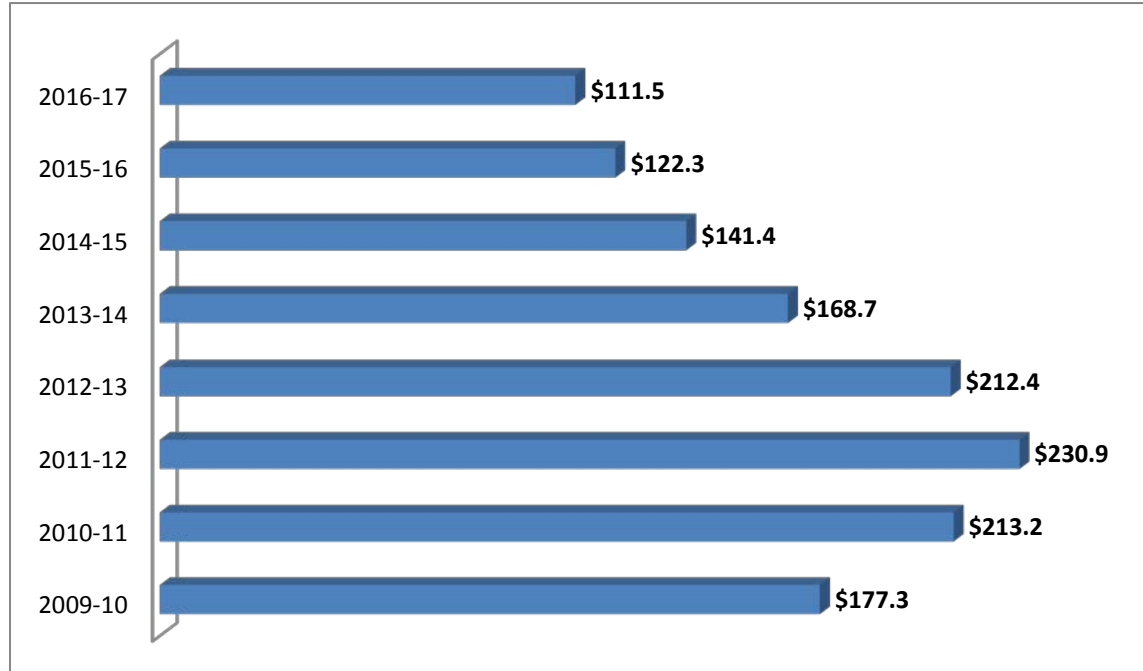
Total of Stafford Unsubsidized Loans Awarded, 2010 through 2017
Millions of Dollars



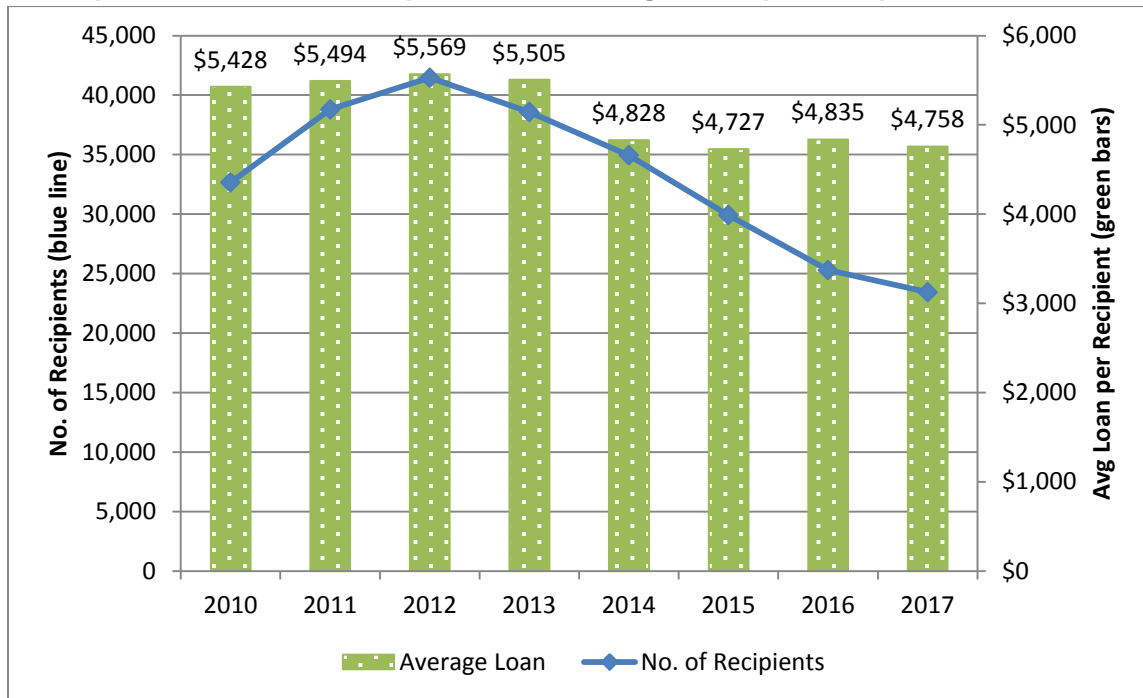
Unsubsidized Stafford Loan Recipients and Average Loan per Recipient, 2010 – 2017



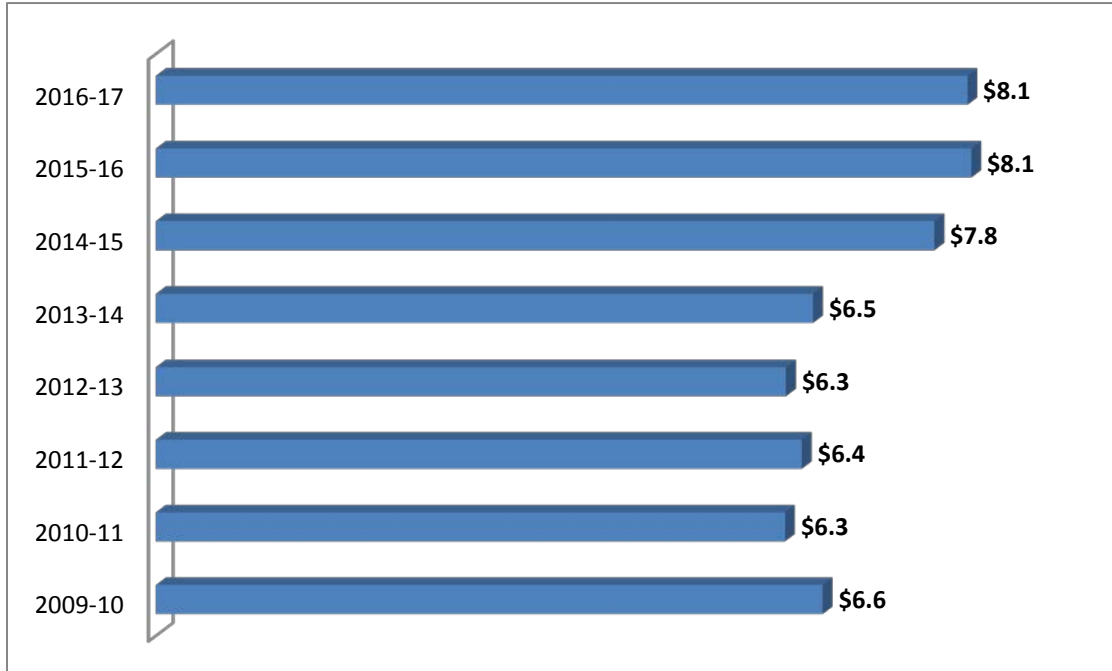
Total Stafford Loans Awarded, 2010 through 2017
Millions of Dollars



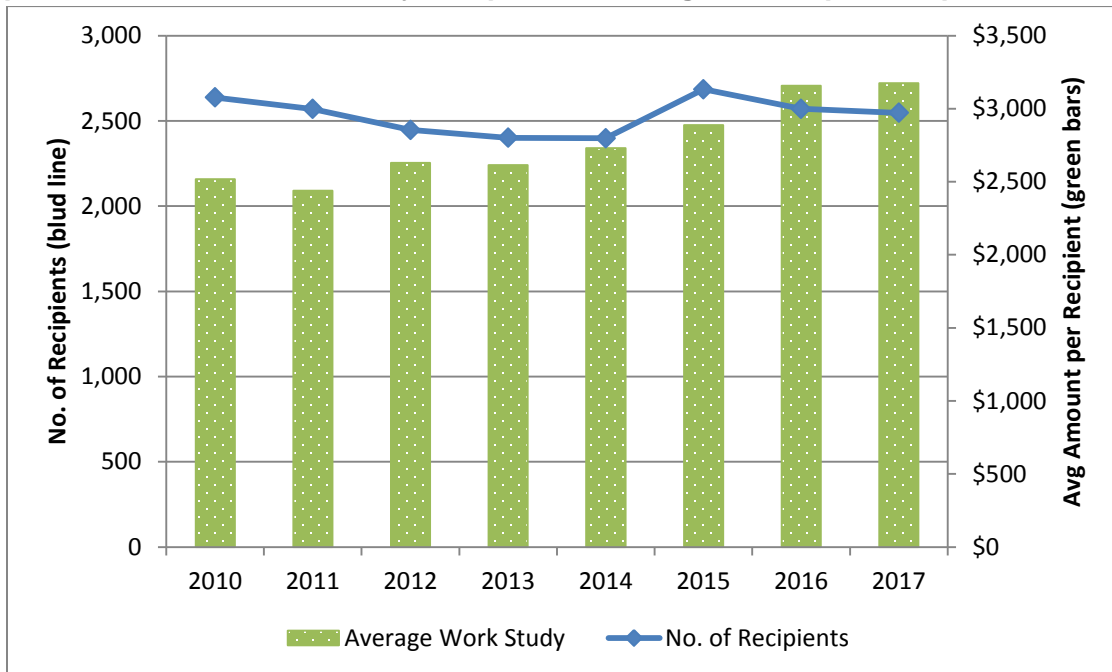
Unique Stafford Loan Recipients and Average Loan per Recipient, 2010 – 2017



Total Federal and State Work Study Awarded, 2010 through 2017
Millions of Dollars



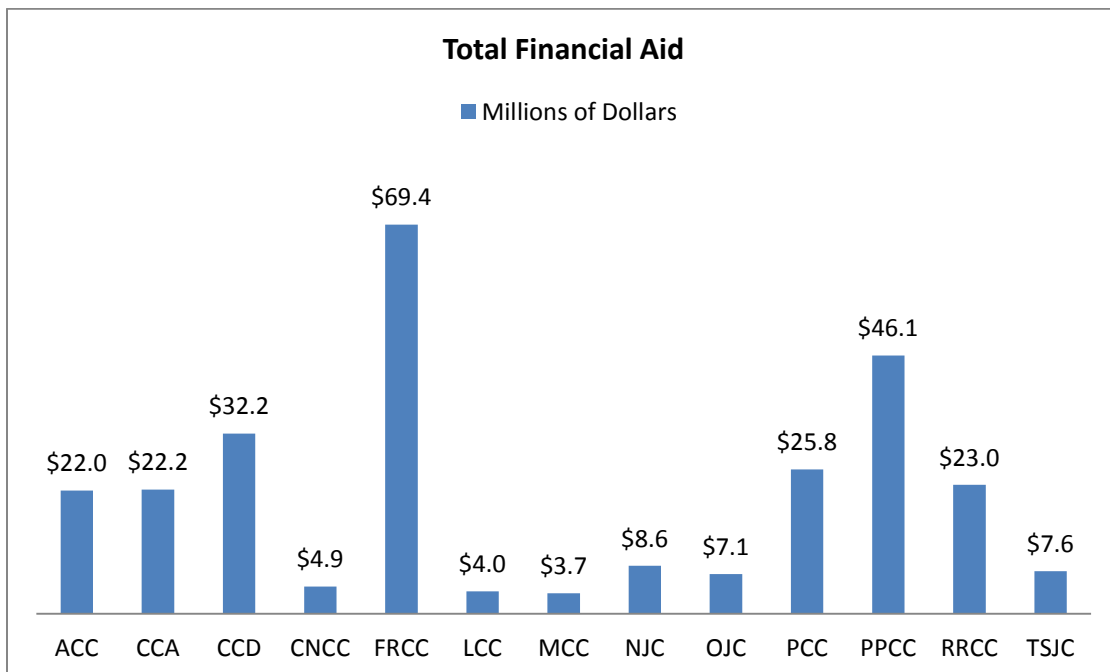
Unique Federal/ State Work Study Recipients and Avg Amount per Recipient, 2010 - 2017



Sources of Student Financial Aid by College, 2016-17

College	Federal Pell	Federal Stafford Loans Subsidized	Federal Stafford Loans Unsubsidized	CO Student Grant	Federal and State Work Study	Other*	Total
ACC	5,688,627	5,618,164	5,073,509	2,837,996	490,134	2,295,969	22,004,399
CCA	7,580,904	4,257,381	4,896,916	3,106,516	494,266	1,818,138	22,154,121
CCD	12,122,768	6,585,713	3,981,058	4,892,215	1,149,343	3,426,955	32,158,052
CNCC	1,031,750	878,793	1,121,581	327,788	115,218	1,392,026	4,867,156
FRCC	18,752,560	15,961,898	20,148,704	7,972,243	1,702,529	4,879,257	69,417,191
LCC	1,067,836	532,378	525,481	382,171	139,758	1,388,518	4,036,142
MCC	1,420,065	505,080	356,143	605,177	176,162	610,360	3,672,987
NJC	1,920,883	1,501,541	1,636,359	883,723	299,922	2,342,371	8,584,799
OJC	2,384,564	995,983	792,865	786,185	266,143	1,888,145	7,113,885
PCC	9,728,660	6,340,357	3,846,685	3,811,968	971,680	1,065,544	25,764,894
PPCC	18,636,770	10,868,476	4,548,047	8,121,191	1,200,833	2,710,956	46,086,273
RRCC	7,298,777	5,273,716	3,577,483	3,512,283	644,473	2,730,532	23,037,264
TSJC	2,575,695	876,146	838,082	1,079,450	435,260	1,825,461	7,630,094
Total	90,209,859	60,195,626	51,342,913	38,318,906	8,085,721	28,374,232	276,527,257
% of Total	32.6%	21.8%	18.6%	13.9%	2.9%	10.3%	100.0%

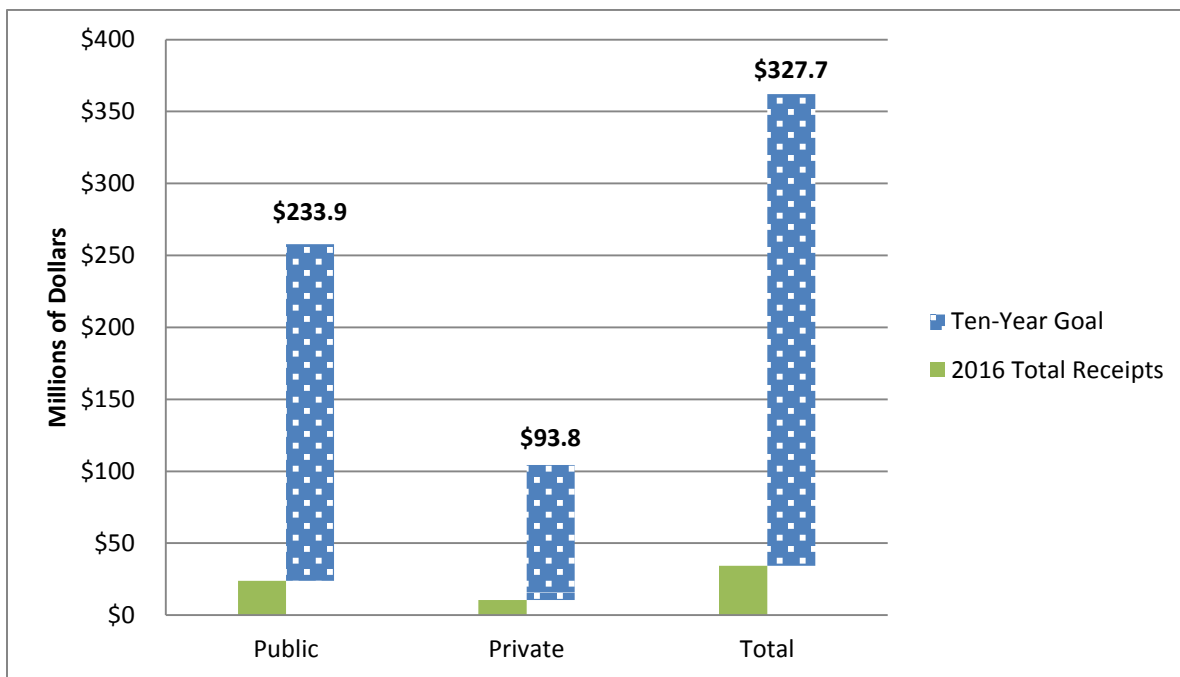
*Includes federal supplemental educational opportunity grants (SEOG), other federal grants and scholarships, GEAR UP, Colorado CTE grants, Colorado categorical grants, institutional need and merit-based grants, private and corporate-sponsored scholarships, federal PLUS and Perkins loans, and other non-federal loans that are processed in college financial aid offices, all of which are categories of financial aid in the SURDS financial aid files submitted to CDHE by colleges.



Financial Resources from Outside Sources

Public and Private Fundraising, 2016 Millions of Dollars

Fiscal Year	2014-15 Baseline	2015-16	2016-17	Total to Date (2015-16 & Forward)	Ten-Year Goal	To Date as % of Total
Public	\$17.7	\$23.8	\$26.5	\$50.3	\$233.9	21.5%
Private	\$7.1	\$10.5	\$10.8	\$21.3	\$93.8	22.7%
Total	\$24.8	\$34.3	\$37.3	\$71.6	\$327.7	21.8%



Glossary of Terms

Academic Year: The academic year starts with the summer semester and ends with the following spring semester. It is named for the calendar year of the spring semester.

American Indian or Alaskan Native: A person having origins in any of the original peoples of North and South America (including Central America) who maintains cultural identification through tribal affiliation or community attachment. The term “Native American or Alaskan Native” is also used in this document.

Asian: A person having origins in any of the original peoples of the Far East, Southeast Asia, or the Indian Subcontinent, including, for example, Cambodia, China, India, Japan, Korea, Malaysia, Pakistan, the Philippine Islands, Thailand, and Vietnam.

Associate Degree: An award that normally requires at least two but less than four years of full-time equivalent college work. Associate of Arts (AA), Associate of Science (AS), and Associate of General Studies (AGS) degrees are transfer-oriented awards, while Associate of Applied Science (AAS) degrees are considered professionally oriented, terminal awards.

Adjunct Instructors: Non-tenure track instructional staff serving in a temporary or auxiliary capacity to teach specific courses on a course-by-course basis.

Black or African American: A person having origins in any of the black racial groups of Africa.

Career and Technical Education: An educational program that specializes in the skilled trades, applied sciences, modern technologies, and career preparation. It was formerly called vocational education.

Certificate (at least one but less than two academic years): Requires completion of a program that would be completed in at least one but less than two full-time equivalent academic years, or designed for completion at least 30 but less than 60 credit hours, or in at least 900 but less than 1,800 contact hours. In this report, these certificates are referred to as two-year certificates.

Certificate (less than one year): Requires completion of a program that would be completed in less than one academic year or less than 900 contact hours by a student enrolled full time. In this report, these certificates are referred to as one-year certificates.

Completer: A student who receives a degree, certificate, or other formal award. In order to be considered a completer, the degree/award must actually be conferred.

Completion Rate: The number of students with a passing grade (C grade or better) divided by the number of students with a passing or failing grade. Students with an incomplete, withdrawal, or in progress/ungraded are not included in the calculation. In this report, the term is used in reference to courses, i.e., course completion rate.

Continuing: A student who was enrolled previously at the institution at the current level (e.g., undergraduate or graduate), including readmitted students, but excluding students considered new transfers, high school students, summer only students, or study abroad only students.

Degree Level: The level of degree/diploma/certificate conferred by the institution upon the student for the successful completion of a program.

Degree-seeking Students: Students enrolled in courses for credit who are seeking a degree, certificate, or other formal award. High school students are not considered degree seeking.

Degree with Designation: Specific academic programs at the AA and AS degree levels that result in transfer of credits to public four-year institutions and student enrollment at such institutions with junior status, as long as course requirements are met.

Developmental Courses: Courses that focus on the fundamental knowledge and skills in reading, writing and mathematics that individuals need to function productively in society.

Face-to-Face Course (FTF): A course in which all instruction is face to face in a classroom setting. These courses are also known as a “traditional” or “classroom” courses.

First Generation: For purposes of this report, a student whose parents have not completed a bachelor’s degree.

First time: Generally, a student attending undergraduate post-secondary education for the first time after high school, including students enrolled in the fall term who attended college for the first time in the prior summer term. For purposes of this document, a student who is so reported to the Colorado Department of Higher Education in SURDS enrollment files.

FTE or Full-time Equivalent: A mechanism to measure academic enrollment activity consistently, given the differences between full and part-time students. Thirty credit hours equal one FTE student.

Full-time student: An undergraduate student enrolled for 12 or more semester credits or a graduate student enrolled for 9 or more semester credits.

Graduation Rate: A federal IPEDS statistic that measures the percent of full-time, first-time, degree/certificate-seeking undergraduate students in a particular year (cohort) who complete their program within 150 percent of normal time to completion or who transfer to other institutions if transfer is part of the institution’s mission. Data are collected and graduation rates calculated by race/ethnicity and gender, in addition to total students in the cohort.

Hispanic: A person of Mexican, Puerto Rican, Cuban, Central or South American, or other Spanish culture or origin, regardless of race.

Hybrid Learning: Hybrid learning refers to the practice of using both online and in-person learning experiences

Integrated Postsecondary Education Data System (IPEDS): IPEDS is a system of interrelated surveys conducted annually by the U.S. Department of Education’s National Center for Education Statistics (NCES). IPEDS gathers information from every college, university, and technical and vocational institution that participates in federal student financial aid programs.

Native American or Alaska Native: Used interchangeably in this document with American Indian or Alaska Native, the definition of which is a person having origins in any of the original peoples of North and South America (including Central America) who maintains cultural identification through tribal affiliation or community attachment.

Native Hawaiian or Other Pacific Islander: A person having origins in any of the original peoples of Hawaii, Guam, Samoa, or other Pacific Islands.

Non-degree Seeking: A student enrolled in courses for credit who is not pursuing a formal degree or award.

Non-resident Alien: A person who is not a citizen or national of the United States and who is in this country on a visa or temporary basis and does not have the right to remain indefinitely.

Online Course: A course in which the instructional content is delivered exclusively online, except for campus activities like orientation, testing, or academic support services..

Part-time Student: An undergraduate student enrolled for less than 12 semester credits or a graduate student enrolled for less than 9 semester credits.

Pell eligible: A measurement of ability to pay for higher education; students who are least able to afford to pay for college are “Pell eligible.” A student must complete the Free Application for Federal Student Aid (FAFSA) for a determination of eligibility. Thus, not all students are evaluated to determine whether they meet the Pell eligibility standard; however, Pell eligibility is the most common proxy for low income when assessing student outcomes by socioeconomic status.

Private Fundraising: Revenue or revenue commitments from individual or corporate donors or foundations for scholarships, key programmatic initiatives, professional development, and improvements to facilities, technology, and learning environments.

Public Fundraising: Revenue from federal, state, and municipal government sources that is outside normal realm of government funding for colleges. Federal grants are an example of public fundraising as is the Colorado Opportunity Scholarship Initiative (COSI).

Race/Ethnicity: The group(s) to which an individual belongs, identifies with, or belongs in the eyes of the community. Individuals are asked first to designate ethnicity as either Hispanic/Latino or not Hispanic/Latino and then to indicate all races that apply among American Indian or Alaska Native, Asian, Black or African American, Native Hawaiian or Other Pacific Islander, and White.

Registration Status: The student’s status at the reporting institution.

Retention: A measure of the rate at which students persist in their educational program at an institution. It is the percentage of students from the previous fall who either re-enrolled or successfully completed their program by the current fall. In this publication, a rate is calculated for all students and for first-time degree/certificate-seeking students, both full and part time.

Stafford Loan – Subsidized: The Federal Direct Subsidized Stafford loan is offered to undergraduate students who demonstrate financial need. The interest on subsidized loans is paid by the federal government while the student is in school and during authorized deferment.

Stafford Loan - Unsubsidized: The Federal Direct Unsubsidized Stafford Loan is offered to both undergraduate and graduate students; there is no requirement to demonstrate financial need.

Students are responsible for all of the interest that accrues while the student is enrolled in school.

Student of Color: A student who reported a race/ethnicity as Asian, Black or African American, Hawaiian or Pacific Islander, Hispanic, or American Indian or Alaska Native or who reported multiple races. Non-resident aliens are excluded from this category regardless of race/ethnicity.

Student Level: The level – graduate or undergraduate – at which a student is classified during the term which is being reported, based upon the total credits obtained toward completion of a degree/certificate program.

Transfer in: A student for whom this term is the student's first term at the institution at the current level, where level is undergraduate or graduate, and the student is known to have previously attended a postsecondary institution at the same level after high school.

White: A person having origins in any of the original peoples of Europe, North Africa, or the Middle East (except those of Hispanic origin).

Source: primarily the Colorado Department of Higher Education and IPEDS.