



HISTORY *Colorado*

November 21, 2011

TO: Colorado Capital Development Committee Members

FROM: Ed Nichols, President, History Colorado, the Colorado Historical Society
Steve Turner, Director, State Historical Fund

RE: Summary of State Historical Fund Activity for Fiscal Year 2010-2011

Attached is a copy of the Fiscal Year 2010-11 State Historical Fund Annual Report that includes information concerning all of the grants awarded from the State Historical Fund in FY 2010-11. This report is being submitted to the Capital Development Committee pursuant to SB 10-192.

As is noted in the Annual Report, the State Historical Fund (SHF), a program of History Colorado, continues to reach every Colorado county with both grants and expertise that protect our historic resources. This past year, SHF awarded 97 grants across Colorado representing a total investment of \$6,904,608.

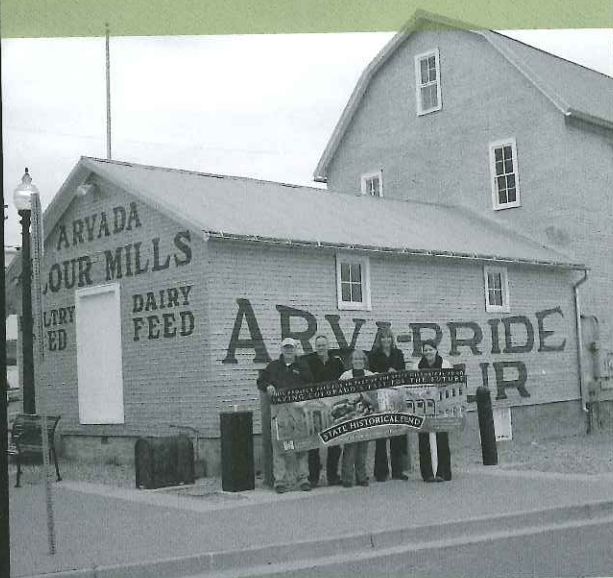
One of the most rewarding aspects of working with SHF, especially in these challenging economic times, is its ability to restore, protect, and save important elements of Colorado's history while assisting local governments in generating economic development in their communities, and working in partnership with them to supplement their financial needs for public-use historic preservation projects.

The increasing demand of State Historical Fund grants, technical resources and expertise demonstrates that historic preservation remains an important program to the people of Colorado. Communities value their heritage and the State Historical Fund preservation grants provide an essential avenue to help revitalize their historic resources. We are grateful to the Colorado State Legislature for its continued assistance in helping the people and communities of Colorado restore, protect, and preserve its precious history for future generations through the State Historical Fund.



STATE HISTORICAL FUND

2010/2011 ANNUAL REPORT



State Historical Fund Mission

TO FOSTER HERITAGE PRESERVATION THROUGH
TANGIBLE AND HIGHLY VISIBLE PROJECTS FOR
DIRECT AND DEMONSTRABLE PUBLIC BENEFIT.



HISTORY *Colorado*
STATE HISTORICAL FUND

A Program of History Colorado

STATE HISTORICAL FUND

As one of the nation's largest state historic preservation grant programs, History Colorado's State Historical Fund (SHF) supports preservation projects in all corners of Colorado. Each year, the program receives a portion of the total state tax revenues generated by limited-stakes gaming in the towns of Black Hawk, Central City, and Cripple Creek. SHF redistributes these funds to public and nonprofit organizations for the preservation and interpretation of Colorado's architectural and archaeological treasures.

Special Initiatives Grants

Thanks to the leadership of History Colorado's Board of Directors, this fiscal year SHF broke new ground by awarding its first-ever Special Initiatives grants. These grants reveal how historic preservation projects can either improve economic development in a rural community or enhance and promote environmental sustainability. In addition to more than \$5 million awarded for other historic preservation projects throughout Colorado, SHF provided \$1.4 million for Special Initiatives projects in Costilla, Prowers, Denver, and San Juan counties.

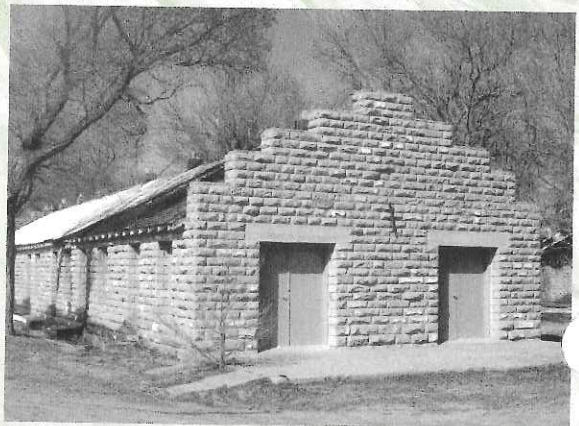
SHF's **Economic Development in Rural Communities** initiative focuses on historic resources as engines of economic redevelopment in rural areas. For this purpose, SHF awarded two grants to help breathe new life into structures originally built through Works Progress Administration (WPA) funding during the Great Depression. These grants went to:

- *The Costilla County Economic Development Council, Inc. for the restoration of the San Luis Museum and Cultural Center.* The Costilla County Economic Development Council, Inc. will restore the exterior of the San Luis Museum and Cultural Center to its original Pueblo Revival style. When completed, the building will house the Sangre de Cristo Heritage Center at Costilla County, whose mission is to revitalize economic



development in Costilla County through programming focused on the arts, agriculture, and historic religious culture of the region.

- *Lamar Community College for the rehabilitation of Prowers County Welfare Housing.* The existing buildings of the Prowers County Welfare Housing complex—the only welfare and public housing of its type built in rural eastern Colorado—will be adapted to accommodate business incubator offices, preservation crafting studios, student housing, and a visitor/interpretive center. The Lamar Chamber of Commerce chapter of Voces Unidas will operate the visitor/interpretive center to give a voice to the critical role the Hispanic community has played in the region's development.



"The Special Initiatives grants are a way to infuse much-needed resources into communities of all sizes in order to help them complete projects that, with the help of State Historical Fund dollars, address some of the most pressing issues facing Colorado's preservation efforts today."

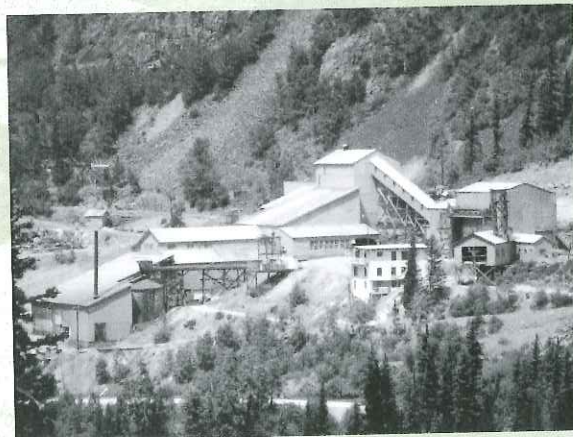
—Steve Turner, Vice President of Preservation Programs

SHF established the Sustainability initiative to demonstrate the symbiotic relationship between historic preservation and sustainability. For the purposes of this grant-funding opportunity, "sustainable" historic preservation projects incorporate methods for reducing energy consumption, installing energy-efficient environmental systems, or implementing alternative energy resources. SHF awarded two such grants to:

- *The National Trust for Historic Preservation Mountains/Plains Office for the rehabilitation of the Emerson School.* The National Trust for Historic Preservation is rehabilitating the historic Emerson School in Denver's Capitol Hill neighborhood to create a new Colorado Preservation Center. Completed in 1885, the Emerson School is the oldest remaining school in Colorado designed by master architect Robert Roeschlaub. This project will showcase how historic

buildings can meet or exceed standards for energy efficiency without sacrificing historic character. The project will restore the school's original energy conservation features and sensitively integrate appropriate new energy-saving technologies.

- *The San Juan County Historical Society for the Shenandoah-Dives Mill Micro-Hydroelectric project.* A century ago, hydroelectric power supplied mills all over the San Juan area. The San Juan County Historical Society is repairing a failing water supply pipeline and installing a micro-hydro turbine to produce electricity to offset the society's electricity bills at the National Historic Landmark Shenandoah-Dives Mill. Once completed, the project will provide an added attraction to summertime tours of the mill, enhance fire protection, and serve as a regional model for installation of micro-hydro power.



Not only do these preservation projects enhance our communities' identity, pride, and connection to heritage—they also help local economies create jobs and get their bearings on the future.

GRANTS AWARDED IN FISCAL YEAR 2011 (JULY 1, 2010–JUNE 30, 2011)

Property Name, Grant Recipient, Project Title, County/Location, Grant Amount (sorted by property name)

Adobe Stables–Arkansas Valley Fairgrounds–Horse Stalls, City of Rocky Ford, Preservation Maintenance Plan and Door Restoration, Otero/Rocky Ford, \$14,455

Aspaas Ranch, Fort Lewis College, Archaeological Assessment, La Plata/Hesperus, \$9,994

Bent County, Pioneer Historical Society of Bent County, Rural Resource Survey, Bent/Rural, \$59,657

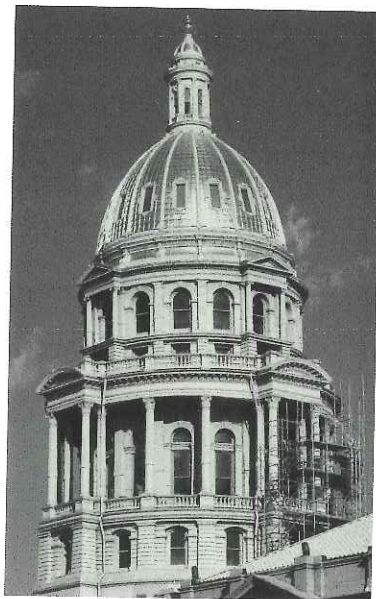
Big Timbers Museum, Prowers County, Historic Structure Assessment, Prowers/Lamar, \$12,910

Billy Cole Building, Town of Silverton, Stabilization, San Juan/Silverton, \$10,000

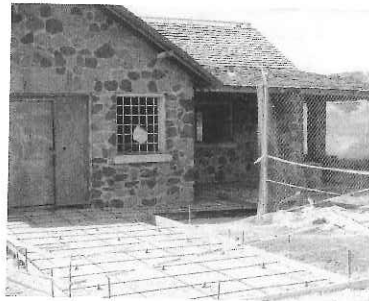
Bluff Lake Nature Center–Richardson Ranch, Bluff Lake Nature Center, Archaeological Assessment, Adams/Aurora, \$9,995

Bogey's West, Douglas Masonic Lodge No.153 A.F. & A.M., Historic Structure Assessment, Douglas/Castle Rock, \$15,000

C. G. Gorman Block–Doyle Block, Southern Teller County Focus Group, Storefront Rehabilitation, Teller/Victor, \$33,547



Colorado State Capitol, Denver



Camp George West, Golden

Camp George West Recreation Hall–Building Number 48, Pleasant View Metropolitan District, Interior Rehabilitation, Jefferson/Golden, \$146,245

Chautauqua Dining Hall, Colorado Chautauqua Association, Roof Stabilization and Rehabilitation, Boulder/Boulder, \$48,098

Cherokee Ranch–Charlford Castle–Sunflower Ranch–Blunt Homestead–Flower Homestead, Cherokee Ranch and Castle Foundation, Preservation Development Plan, Douglas/Rural, \$69,838

Cheyenne County Courthouse, Cheyenne County, Rehabilitation, Cheyenne/Cheyenne Wells, \$34,367

Colorado State Capitol, Historic Denver, Inc., Documentary, Statewide, \$50,160

Cowboy Wash Pueblo, Ute Mountain Ute Tribe, Archaeological Assessment, Montezuma/Rural, \$10,000

Crawford School–Crawford Town Hall and Community Center, Town of Crawford, Preservation and Reconstruction, Delta/Crawford, \$139,006

Crossan's M & A Market Building, Town of Yampa, Historic Structure Assessment, Routt/Yampa, \$9,775

Custer–Fremont–Huerfano–Pueblo–Las Animas Counties, Sangre de Cristo Resource Conservation & Development Council, Inc., Heritage Tourism Master Plan, Regional, \$36,000

Denver & Rio Grande Western Railroad Depot–Pufferbelly Station, Grand Junction Downtown Association Inc., Preservation and Rehabilitation, Mesa/Grand Junction, \$162,811

Denver Fire Department Fire Station No. 5–Engine No. 5–Windsor Dairy, Colorado Preservation, Inc., Exterior Rehabilitation, Denver/Denver, \$35,000



Denver & Rio Grande Western Railroad Depot, Grand Junction

Douglas Homestead, Highlands Ranch Community Association, Inc., Historic Structure Assessment, Douglas/Highlands Ranch, \$10,000

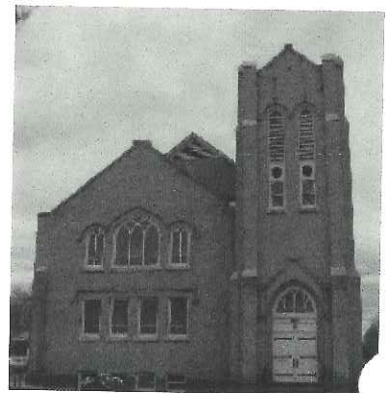
Dudley C. Shoenberg Memorial Farm–Shoenberg Farm–Concrete Silo, City of Westminster, Interior Stabilization and Exterior Preservation, Jefferson/Westminster, \$71,033

East High School, School District No. 1 in the City & County of Denver, Exterior Terra Cotta Restoration, Denver/Denver, \$221,188

EM Ranch/Santa Maria Ranch–Main Ranch House, Park County, Restoration of Wood Windows and Brick Chimneys, Park/Hartsel, \$28,449

Emerson School, National Trust for Historic Preservation, Rehabilitation, Denver/Denver, \$500,000

First German Congregational Church–The First German Evangelical Congregational Church–First Congregational Church–UCC Loveland, First Congregational Church, Preservation and Rehabilitation, Larimer/Loveland, \$131,500



First German Congregational Church, Loveland

SHF BY THE NUMBERS

Total awarded projects for fiscal year 2011: 97

Value of those 97 grants: \$6,904,608

Total awarded projects since SHF inception: 3,756

Value of all grants since SHF inception: \$243,012,795

A map of total State Historical Fund grant dollars awarded by county follows the list of grants awarded in Fiscal Year 2011 on the following pages.

First Methodist Episcopal Church—Monte Vista United Methodist Church, Monte Vista United Methodist Church, Preservation and Rehabilitation, Rio Grande/Monte Vista, \$121,324

Flagler Hospital—Hotel Flagler—Flagler Hotel—Flagler Municipal Building, Town of Flagler, Roof Preservation, Kit Carson/Flagler, \$28,135

Flyin' B Ranch, Highlands Ranch Metro District, Historic Structure Assessment, Douglas/Highlands Ranch, \$13,600

Foster House Stage Station & Hotel—DuPont Superintendent's Office, Apishapa Valley Historical Society, Archaeological Assessment, Las Animas/Rural, \$5,745

George Elbert Burr Studio and Residence—Denver Woman's Press Club, Denver Woman's Press Club, Historic Structure Assessment, Denver/Denver, \$14,440

German Congregational Church—Community of Christ Church, Community of Christ, Rehabilitation and Reconstruction, Boulder/Longmont, \$70,080

Golconda Mine and Boarding House, Hinsdale County Historical Society, Historic Structure Assessment, Hinsdale/Rural, \$9,160

Gulzow Tire Shop—Monte Vista Police Department, City of Monte Vista, Historic Structure Assessment, Rio Grande/Monte Vista, \$13,070

Harris Ranch Cabin—Harris Cabin, Colorado Preservation, Inc., Preservation, La Plata/Rural, \$60,081

Hawkins Pueblo Shed, Cortez Center, Inc. dba Cortez Cultural Center, Rehabilitation and Preservation, Montezuma/Cortez, \$50,025



Union Pacific Railroad Roundhouse, Hugo



Hutchinson Homestead, Salida area

Hayden Ranch, Colorado Mountain College, Stabilization and Rehabilitation, Lake/Leadville, \$213,700

Hoverhome and Hover Farmstead—Hover Farm—Hover Mansion—Automobile House, St. Vrain Historical Society, Inc., Interior and Exterior Preservation, Boulder/Longmont, \$30,550

Hughes Lumber Co.—Trinidad Lumber—O. L. Davis Lumber, City of Trinidad, Historic Structure Assessment, Las Animas/Trinidad, \$14,155

Hugo Union Pacific Railroad Roundhouse—Hugo Roundhouse, Roundhouse Preservation, Inc., Door and Window Restoration and Reconstruction, Lincoln/Hugo, \$124,113

Hutchinson Ranch (Centennial Farm)—Hutchinson Homestead—Main House and Landscape, Salida Area Parks Open Space and Trails, Interior and Exterior Rehabilitation, Chaffee/Rural, \$164,321

Indian Hills Community Hall and Firehouse—Indian Hills Community Center, Indian Hills Improvement Association, Historic Structure Assessment, Jefferson/Indian Hills, \$14,000

Jefferson Place Subdivision, City of Louisville, Intensive Level Survey, Boulder/Louisville, \$21,000

Kennicott—Patterson Otero Building, The Alliance for Sustainable Colorado, Historic Structure Assessment, Denver/Denver, \$15,000

La Boca, Tiffany, Hesperus, Thompson Park Cemeteries, San Juan Mountains Association, Study of Four Rural Cemeteries, La Plata/Rural, \$34,993

La Jara Town Hall—La Jara Depot, Town of La Jara, Preservation and Rehabilitation, Conejos/La Jara, \$160,909

Lay Schoolhouse, The National Society of the Daughters of the American Revolution, Augusta Wallihan Chapter, Historic Structure Assessment, Moffat/Rural, \$8,265

Logan County Courthouse, Logan County dba Logan County Commissioners, Lower Level Piping and Ceiling Rehabilitation, Logan/Sterling, \$35,000

Lone Mesa State Park, Department of Natural Resources, Division of Parks and Wildlife, Archaeological Assessment, Dolores/Rural, \$9,976

Loveland Hotel—Elks Lodge/Plaza Apartments, City of Loveland, Historic Structure Assessment, Larimer/Loveland, \$13,997

Majestic Opera House, City of Loveland, Exterior Rehabilitation and Restoration, Larimer/Loveland, \$98,883

Property Name, Grant Recipient, Project Title, County/Location, Grant Amount (sorted by property name)

Mayflower Mill–Shenandoah–Dives Mill, San Juan County Historical Society, Inc., Water and Electrical Rehabilitation, San Juan/Silverton, \$105,000

Mesa Schoolhouse, City of Steamboat Springs, Window Restoration, Routt/Steamboat Springs, \$45,386

Mesa Verde National Park Archaeological District, Fort Lewis College Internship Program: Colorado's National Parks, Montezuma/Mesa Verde, National Park, \$35,793

Nunn Water Tower, Town of Nunn, Historic Structure Assessment, Weld/Nunn, \$7,450

O. V. Ranch–Lowell Ranch on Plum Creek (Centennial Farm), Colorado Agricultural Leadership Foundation Inc., Intensive Survey, Douglas/Castle Rock, \$3,900

Old Dallas Town Site, Montrose Rotary Club Youth Foundation, Archaeological Assessment, Ouray/Rural, \$10,000

Old High School–San Luis Institute of Arts & Crafts–San Luis Museum & Cultural Center, Costilla County Economic Development Council, Exterior Restoration, Costilla/San Luis, \$450,000

Old Middle School, Del Norte School District C-7, Historic Structure Assessment, Rio Grande/Del Norte, \$15,000

Owen E. LeFevre House, 1311 York Street Club Inc., Historic Structure Assessment, Denver/Denver, \$15,000

Paramount Cottage Camp–East Building, City of Fort Collins, Roof Rehabilitation, Larimer/Fort Collins, \$33,550



Richards Cabin/Murray House, Gunnison

Prowers County Welfare Housing, Lamar Community College, Rehabilitation, Prowers/Lamar, \$365,705

Richards Cabin–Murray House, Rocky Mountain Biological Laboratory at Gothic, Preservation and Rehabilitation, Gunnison/Gothic, \$135,411

Rocky Mountain National Park, Dominguez Archaeological Research Group, Inc., Colorado Wickiup Project Phase VII, Regional, \$35,000

San Francisco Morada–Sociedad de Nuestro Padre Jesus Nazareno La Valley #6–Fraternidad Piadosa de Nuestro Padre Jesus Nazareno, Costilla County Economic Development Council, Preservation and Rehabilitation, Costilla/San Francisco, \$45,602

Santa Fe National Historic Trail, National Trust for Historic Preservation, Survey and Resource Management Nominations, Regional, \$120,000

Semper Homestead–Allison Farm–Semper Farm, City of Westminster, Barn Rehabilitation Construction Documents, Jefferson/Westminster, \$16,654

Sherman Elementary School, Art Students League of Denver, Exterior Rehabilitation, Denver/Denver, \$94,537

Silverton Northern Railroad Engine House, San Juan County Historical Society, Inc., Historic Structure Assessment, San Juan/Silverton, \$11,425

South Park Lager Beer Brewery, South Park Historical Foundation, Inc. dba South Park City Museum, Rehabilitation, Park/Fairplay, \$90,334

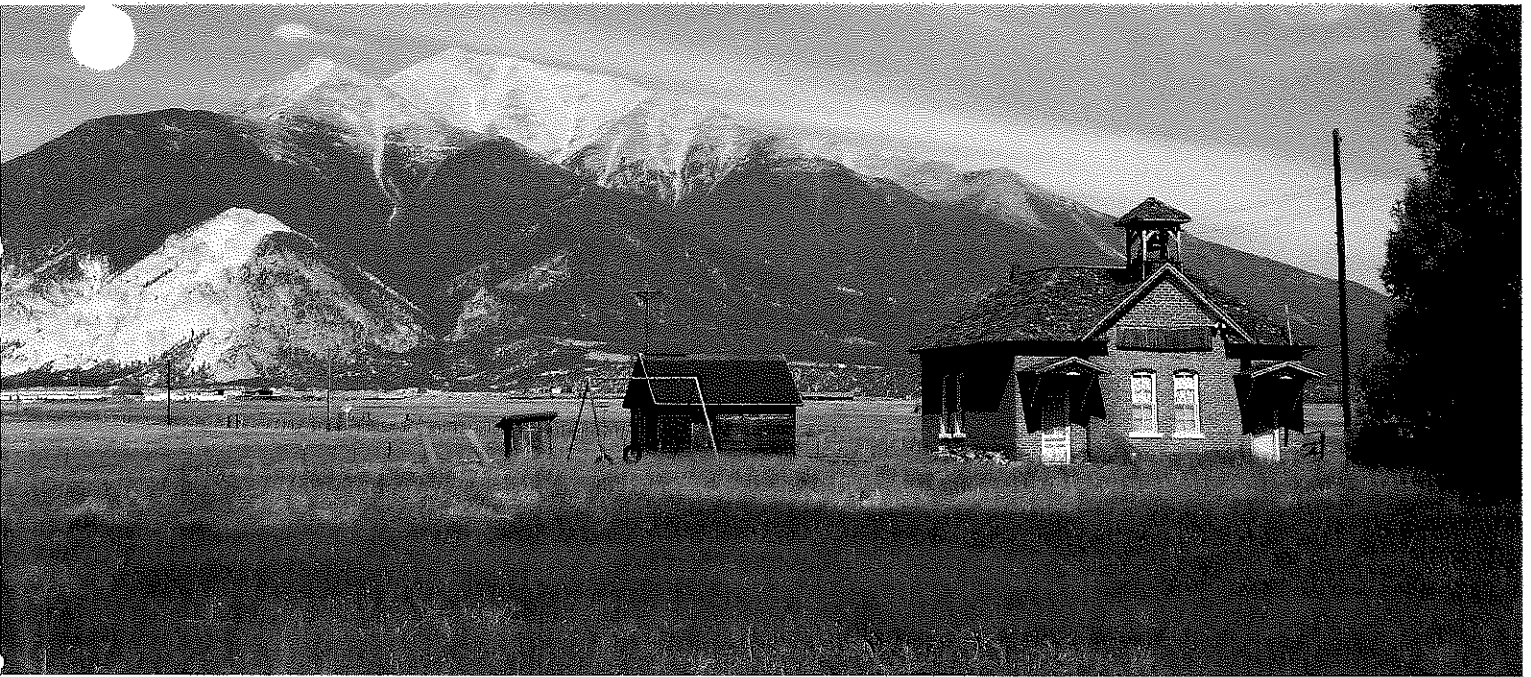
St. Andrews Episcopal Church (Manitou Springs), St. Andrews Episcopal Church, Historic Structure Assessment, El Paso/Manitou Springs, \$13,000

St. Mark's Presbyterian Church–Kiowa Presbyterian Church–Kiowa Creek Community Church, Kiowa Creek Community Church, Window Restoration, Elbert/Kiowa, \$25,980

St. Mary's Church–St. Mary's Rectory–St. Mary's Grade School –St. Mary's School–Pueblo Catholic Diocese–St. Mary's Hudson Hall Convent, Diocese of Pueblo dba The Bishop of Pueblo, A Corporation Sole, Historic Structure Assessment, Pueblo/Pueblo, \$10,000



Mesa Schoolhouse, Steamboat Springs



State Historical Fund grants help recipients with surveys of historic rural resources across the state, including Chaffee County.

St. Paul United Methodist Church (Denver), Historic Denver, Inc., Stained Glass Window Restoration, Denver/Denver, \$228,774

Stillwater Site, PaleoCultural Research Group (PCRG), Archaeological Assessment, Larfield/Rural, \$9,958

Tabor Grand Hotel, City of Leadville, Historic Structure Assessment, Lake/Leadville, \$7,500

The Dry, Southeast Colorado Resource Conservation and Development Inc., Archaeological Assessment, Otero/Rural, \$9,996

Town Hall and Firehouse (Saguache), Town of Saguache, Historic Structure Assessment, Saguache/Saguache, \$15,000

Underwood Elementary School, Del Norte School District C-7, Historic Structure Assessment, Rio Grande/Del Norte, \$15,000

Ute Mountain Ute Mancos Canyon Archaeological District-Ute Mountain Tribal Park, Ute Mountain Ute Tribe, Cultural Resources Management Plan, Montezuma/Ute, Mountain Tribal Park, \$200,333

Valley Publishing Building, City of Monte Vista, Historic Structure Assessment, Rio Grande/Monte Vista, \$14,870

Valley Theater (Fowler), Town of Fowler, Historic Structure Assessment, Otero/Fowler, \$10,000

Vanoli Artifact Assemblage, Colorado State University, Artifact Analysis, Ouray/Rural, \$127,003

Various, Colorado Preservation, Inc., Education Program: 2011-2012 Colorado Preserve America Youth Summits, Statewide, \$243,934

Various, State of Colorado, Colorado Tourism Office, Colorado Heritage Tourism, Statewide, \$275,000

Various, Colorado Preservation, Inc., Endangered Places Program, Statewide, \$110,022

Various, Colorado Historical Foundation, 2010 Update: *The Economic Benefits of Historic Preservation in Colorado*, Statewide, \$100,000

Various, Bessemer Historical Society, *Structures of Steel: Architectural Drawings-CF&I Company Archives*, Pueblo/Pueblo, \$26,250

Various, Crow Canyon Archaeological Center, Archaeology to Reconstruct Colorado History, Statewide, \$108,554

Various, State of Colorado-Department of Local Affairs, Colorado Main Street Coordinating Project, Statewide, \$220,000

Various, Colorado Historical Society, Certified Local Government Subgrant Match, Statewide, \$50,000

Various, Colorado Historical Society, Colorado Cultural Resource Data Dissemination Program-Phase II, Statewide, \$138,200

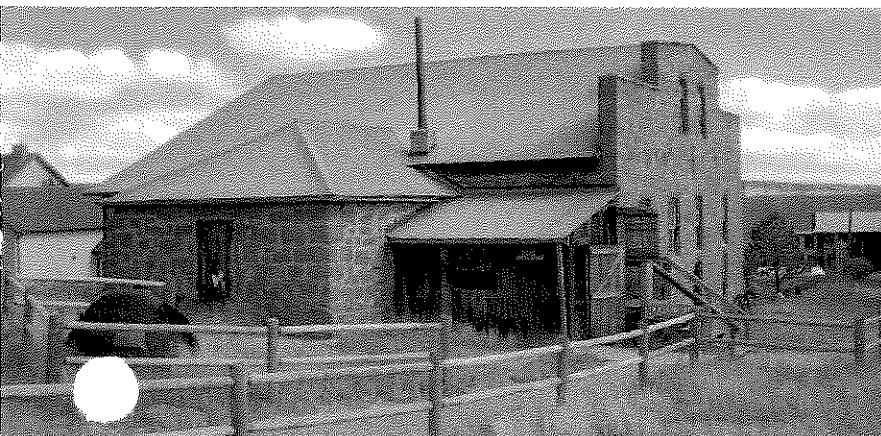
Various, City of Greeley, Sunrise Neighborhood Historic and Architectural Context Report, Weld/Greeley, \$17,836

Various, City of Pueblo, *Pueblo Modern: A Mid-Century Historical and Architectural Context Study*, Pueblo/Pueblo, \$27,400

Walter and Anna Zion Homestead (Homestead), Idalia Vision Foundation, Inc., Roof Repair, Yuma/Rural, \$9,600

Walter and Anna Zion Homestead (Milk House), Idalia Vision Foundation, Inc., Roof Repair, Yuma/Rural, \$2,400

Willow Creek Park-Caretaker's House, City of Lamar, Construction Documents, Prowers/Lamar, \$25,000



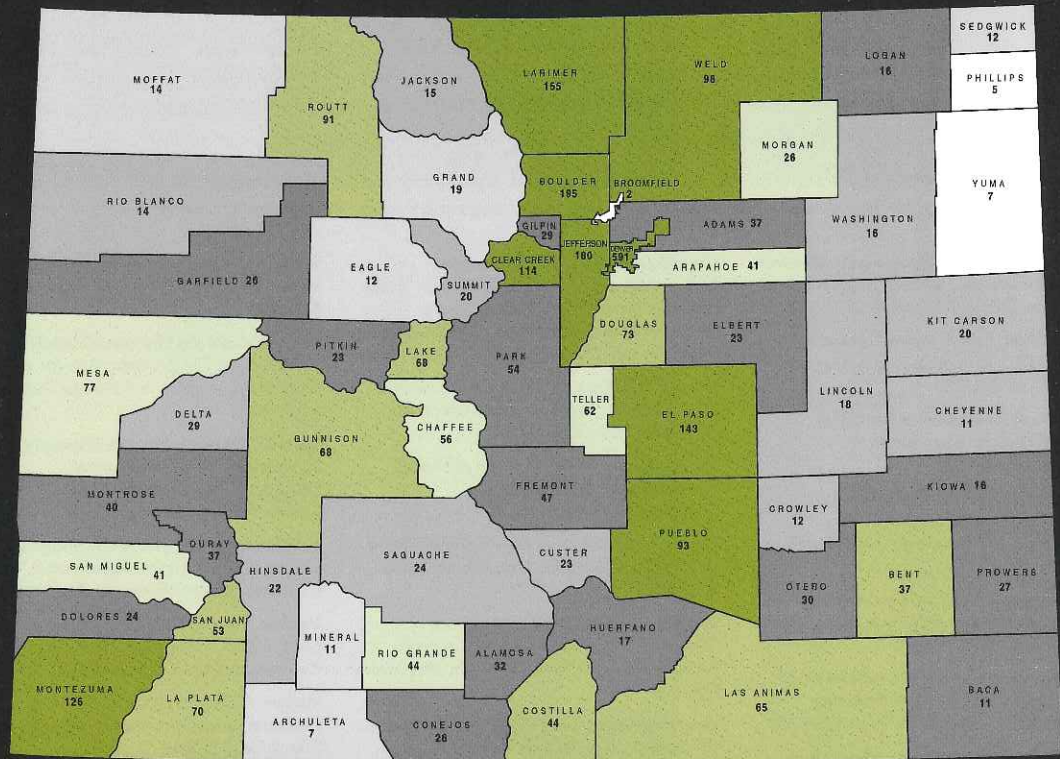
South Park Lager Beer Brewery, Fairplay

THE STATE HISTORICAL FUND

TOTAL GRANT DOLLARS AWARDED BY COUNTY

FROM PROGRAM INCEPTION THROUGH FISCAL YEAR 2011

(Number of grants awarded indicated by numbers)



Projects affecting multiple counties are not represented.
 Due to a new formula for tallying the total number of successful grants from SHF's inception, some numbers may vary from those reported last year.

