



# HISTORY *Colorado*

December 3, 2010

TO: Colorado Capital Development Committee Members

FROM: Ed Nichols, President, History Colorado, the Colorado Historical Society  
Steve Turner, Director, State Historical Fund

RE: Summary of State Historical Fund Activity for Fiscal Year 2009-2010

Attached is a copy of the Fiscal Year 2009-10 State Historical Fund Annual Report that includes information concerning all of the grants awarded from the State Historical Fund FY 2009-10. This report is being submitted to the Capital Development Committee pursuant to SB 10-192.

As is noted in the Annual Report, the State Historical Fund (SHF), a program of History Colorado, the Colorado Historical Society, continues to reach every Colorado county with both grants and expertise that protect our historic resources. This past year, the SHF made 182 grants across Colorado.

One of the most rewarding aspects of working with SHF, especially in these challenging economic times, is its ability to restore, protect, and save important elements of Colorado's history while assisting local governments in generating economic development in their communities, and working in partnership with them to supplement their financial needs for public-use historic preservation projects.

For example, an SHF grant awarded to the Solandt Memorial Hospital in the town of Hayden ensures that this rural medical facility, which is located in a historic building, remains in its original structure and continues to operate in town. The preservation of the Solandt Memorial Hospital will ensure that necessary medical and social services remain in Hayden and that local employees of the facility and its patients will not need to commute to other areas of Routt County to work or receive these necessary medical and social services.

Other examples of historic public buildings and sites receiving grant funds for preservation include the Fort Lyon Officers' Row in Bent County. This correctional facility will use the grant funds to re-roof these buildings from the late 1800s, which now provide housing to staff who work at Fort Lyon Correctional Facility.

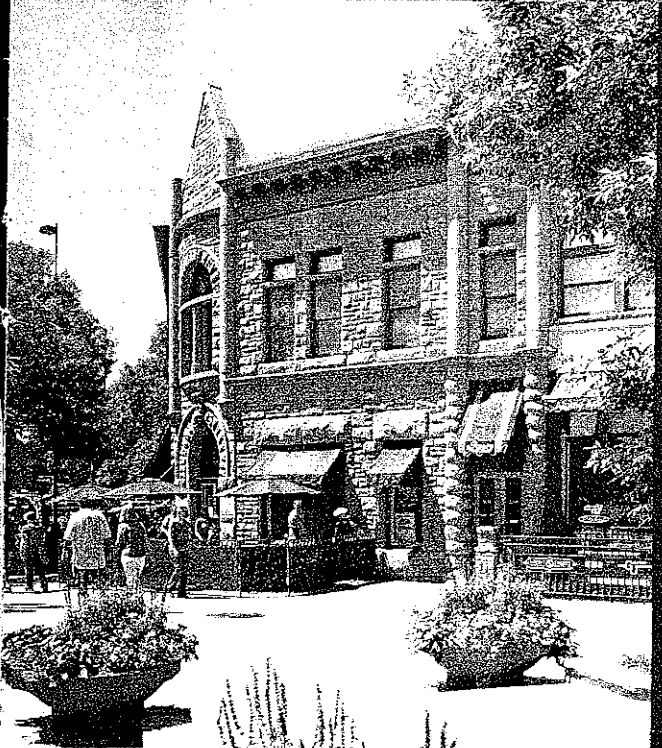
The increasing demand of State Historical Fund grants, technical resources and expertise demonstrates that historic preservation remains an important program to the people of Colorado. Communities value their heritage, and the State Historical Fund preservation grants provide an essential avenue to help revitalize their historic resources. We are grateful to the Colorado State Legislature for its continued assistance in helping the people and communities of Colorado restore, protect, and preserve its precious history for future generations through the State Historical Fund.





# STATE HISTORICAL FUND

2009/2010 ANNUAL REPORT



HISTORY *Colorado*  
STATE HISTORICAL FUND

*A Program of History Colorado*

### *State Historical Fund Mission*

TO FOSTER HERITAGE PRESERVATION THROUGH  
TANGIBLE AND HIGHLY VISIBLE PROJECTS FOR  
DIRECT AND DEMONSTRABLE PUBLIC BENEFIT.

*Clockwise from top left: A granary at Canyons of the Ancients National Monument was the subject of a Historic American Buildings Survey. The town of Animas Forks is being listed in the National Register of Historic Places. The Avery Block Building in Fort Collins received a grant for exterior preservation and reconstruction.*

## THE STATE HISTORICAL FUND

Richard Florida, author of *The Rise of the Creative Class*, states in his book *The Great Reset: How New Ways of Living and Working Drive Post-Crash Prosperity* that three key attributes make people happy in their communities and cause them to develop a solid emotional attachment to the place they live. One of these characteristics is great open spaces, parks, attention to community aesthetic, and the existence of historic buildings. History Colorado's State Historical Fund (SHF) grants program is a prime example of how preservation efforts make such a difference in the quality of life in communities across Colorado.

The constitutional amendment of 1990 authorizing limited-stakes gaming in three Colorado mountain towns established the SHF. The associated legislation allocated a portion of the tax revenue from gaming activities toward SHF grants for historic preservation. In the 18 years of active gaming since that amendment passed, the SHF has awarded more than \$247 million in grants—helping public and nonprofit organizations in all 64 Colorado counties preserve thousands of architectural and archaeological treasures.

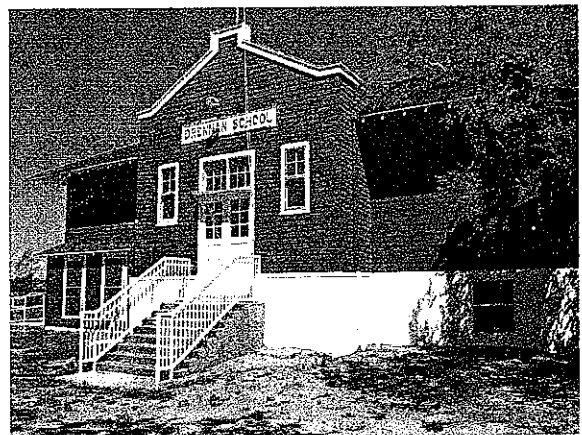
SHF-funded preservation efforts not only improve the ambiance of our built environment and inspire state pride; they also have the power to transform communities by generating tangible benefits to our economy. A 2005 Colorado Historical Foundation study showed an economic return of \$6 for every \$1 in grant funds awarded, through preservation jobs, resultant business potential, and the economic boost to local communities.

As a way to strengthen this ability and commitment to Colorado, two special initiatives programs were created this year to direct precious SHF dollars to the most pressing issues facing the Colorado preservation community: sustainability and economic rural development. These special initiatives grants will be awarded during the next fiscal year for preservation projects that clearly demonstrate how they

will positively impact economic development in a rural community or enhance and promote environmental sustainability and its inextricable link with historic preservation.

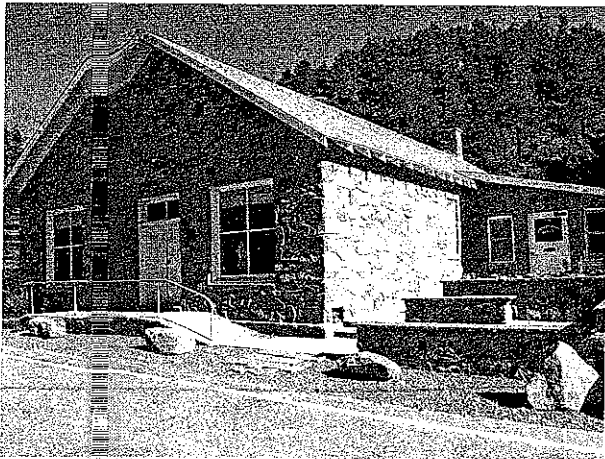
SHF dollars help rural areas and small towns statewide to preserve the cornerstones of their communities. The following are just a few of this year's success stories:

*A 1917 newspaper called the new Drennan School east of Colorado Springs "the first community social center to be established in El Paso County," an early indicator of the building's key contributions to the community beyond educating children of ranching and farming families.* In addition to providing respite from the sometimes desolate life of prairie homesteaders, the building housed a post office, telephone switchboard, and church. After the school closed in 1955, the loose-knit rural community refused to abandon the building. Alumni acquired the schoolhouse in 1957 for use as a community building. An SHF-funded project rehabilitated and restored the building's shingle-sided exterior to protect the carefully maintained interior, where original windows, doors, trim, flooring, heating systems, chalkboards, desks, and stage curtains are all intact and functional. Listed in the Colorado State Register of Historic Properties and the National Register of Historic Places, the former schoolhouse continues to host a wide range of community get-togethers



including an annual "all-school reunion," which encourages connection to the past not only for the graduates but also for their children and grandchildren.

Listed in the National Register of Historic Places, the WPA-built Jamestown Town Hall is the focal point for community life in this small mountain town northwest of Boulder. Residents assemble here for public meetings, concerts, potluck suppers, and plays. Construction on this simple stone building began in early 1935 with local stonemasons hauling rock from nearby James Creek. The building's location at the base of a steep incline allowed runoff to wash against the structure, deteriorating its masonry, and the incapacity of the roof structure was starting to overturn the sidewalls.



Jamestown Town Hall demanded stabilization and restoration to survive. The restoration hit some stumbling blocks, including weather delays and the need for additional engineering to assure the SHF that the required structural reinforcement would not negatively impact the interior's visual appearance. But throughout the course of the project, the mayor, architect, and general contractor persevered, keeping sight on the goal of restoring the historic town hall with patience and good humor.

Situated prominently on tiny Pitkin's main street, the 1900 Pitkin Town Hall continues its original administrative functions as it hosts local meetings, an annual melodrama, and other town events in its second-floor community room.



Although the town completed some preservation projects on the building in the 1990s, by the early 2000s the building suffered from a weak structure, peeling paint, code issues, and a historically incompatible repointing job. Built into a hillside, the building sustained moisture infiltration and creatures had burrowed into the mortar, with some holes running 12 inches into the stone foundation. Despite financial obstacles, Pitkin resolved to preserve its town hall through fundraising activities such as spaghetti dinners and grants from organizations including the SHF. Restoring the foundation and interior, improving the drainage, reinforcing the second-floor structure, painting the exterior, and replacing the stairs and handicap ramp have revitalized this community hub listed in the State Register of Historic Properties. Residents approved a mill levy tax increase dedicated to the upkeep of Pitkin Town Hall, further illustrating their support for the historic building and commitment to usher it into a vibrant future.

Beyond restoration and rehabilitation of historic buildings, the SHF assists in a wide variety of preservation projects, including architectural assessments, archaeological excavations, designation and interpretation of historic places, preservation planning studies, and education and training programs.

# GRANTS AWARDED IN FISCAL YEAR 2010 (JULY 1, 2009–JUNE 30, 2010)

Property Name, Grant Recipient, Project Title, County/Location, Grant Amount (sorted by property name)	Bernard-Sill Residence, Grace Church and St. Stephen's dba Grace and St. Stephen's Episcopal Church, Exterior Rehabilitation and Structural Stabilization, El Paso/Colorado Springs, \$170,700	Colorado Governor's Mansion—Cheesman-Boettcher Mansion, Governor's Residence Preservation Fund, Historic Structure Assessment, Denver/Denver, \$9,000
4-H Dining Hall, 4-H Auditorium, and Colorado Pavilion, Colorado Department of Agriculture dba Colorado State Fair, Roof Rehabilitation, Pueblo/Pueblo, \$186,145	Bimson Blacksmith Shop—Berthoud Pioneer Museum, Town of Berthoud, Historic Structure Assessment, Larimer/Berthoud, \$10,000	Colorado Springs Fine Arts Center, Colorado Springs Fine Arts Center, Historic Structure Assessment, El Paso/Colorado Springs, \$10,000
Alamosa Post Office, Alamosa Uptown and River Association, Historic Structure Assessment, Alamosa/Alamosa, \$15,000	Boggs House and Prowers House, Pioneer Historical Society of Bent County, Historic Structure Assessment, Bent/Rural, \$13,700	Colorado State Hospital Superintendent's House, State of Colorado—Department of Human Services, Historic Structure Assessment, Pueblo/Pueblo, \$14,279
All Saints Church of Eben Ezer, Eben Ezer Lutheran Care Center, Interior and Exterior Rehabilitation, Morgan/Brush, \$92,309	Bonfils-Stanton Caretaker's Cottage, City of Lakewood—Heritage Culture and the Arts Division, Historic Structure Assessment, Jefferson/Lakewood, \$11,400	Como Railroad Depot, Colorado Preservation, Inc., Exterior Restoration, Park/Como, \$34,927
Alpine Tunnel Historic District, Western Colorado Interpretive Association, Interpretive Exhibit, Gunnison/Rural, \$75,000	Bowles House, The City of Westminster, Porch Rehabilitation and Wall Preservation, Adams/Westminster, \$72,000	Como School, Como Civic Association, Roof Replacement, Park/Como, \$30,722
American Legion Post 125, American Legion Post 0125 S R G B, Construction Documents, Kiowa/Eads, \$31,442	Branson School; Branson Reorganized 82, 1750; Historic Structure Assessment; Las Animas/Branson; \$14,972	Corral Bluffs, City of Colorado Springs—Parks and Recreation Department, Archaeological Assessment, El Paso/Rural, \$10,000
Argo Hall, State of Colorado dba Colorado School for the Deaf and Blind, Window Restoration, El Paso/Colorado Springs, \$20,590	Brickyard Manager's House, Golden Landmarks Association, Construction Documents, Jefferson/Golden, \$17,490	Creede Catholic Church, Creede Mining Heritage, Historic Structure Assessment, Mineral/Creede, \$10,000
Arvada Flour Mill, Arvada Historical Society, Exterior Rehabilitation, Jefferson/Arvada, \$101,793	Bromley—Koizuma-Hishinuma Farm, City of Brighton, Exterior Rehabilitation and Roof Replacement, Adams/Brighton, \$165,000	Crestone School, Town of Crestone, Exterior Rehabilitation, Saguache/Crestone, \$107,102
Ault Pump House, Ault Area Historical Museum, Construction Documents, Weld/Ault, \$18,750	Canon and Park Avenue Bridges, City of Manitou Springs, Restoration, El Paso/Manitou Springs, \$292,273	Delta Public Library, Delta County Library Board dba Delta County Public Library District, Historic Structure Assessment, Delta/Delta, \$10,000
Avery Block Building, City of Fort Collins, Exterior Preservation and Reconstruction, Larimer/Fort Collins, \$215,135	Cardinal Mill, Boulder County—Parks and Open Space, Preservation and Rehabilitation, Boulder/Nederland, \$106,261	Denver & Rio Grande Railroad Depot, Town of Crested Butte, Historic Structure Assessment, Gunnison/Crested Butte, \$10,000
Bayfield Town Hall, Pine River Valley Heritage Society, Acquisition, La Plata/Bayfield, \$196,862	Chaffee County, Greater Arkansas River Nature Association (GARNA), Historic Resource Survey, Chaffee/Countywide, \$39,406	Denver & Rio Grande Railroad Depot, Town of Antonito, Interior Preservation and Rehabilitation, Conejos/Antonito, \$90,000
Benjamin Hammar House, Town of Castle Rock, Structural Stabilization and Electrical Upgrades, Douglas/Castle Rock, \$8,648	Cheesman Park Pavilion, City and County of Denver—Department of Parks and Recreation, Cheesman Park Pavilion Rehabilitation, Denver/Denver, \$195,000	Denver & Rio Grande Railroad Hospital, City of Salida, Exterior Rehabilitation, Chaffee/Salida, \$190,745
Benjamin Hammar House, Town of Castle Rock, Historic Structure Assessment, Douglas/Castle Rock, \$3,000	Church of the Epiphany, Historic Denver, Inc., Roof Replacement, Denver/Denver, \$91,560	Denver & Rio Grande Railway Depot, Castle Rock Historical Society, Inc., Historic Structure Assessment, Douglas/Castle Rock, \$15,000
Bent County High School, Colorado Preservation, Inc., Historic Structure Assessment, Bent/Las Animas, \$15,000	City of Lamar—Downtown, City of Lamar, Cultural Resource Survey, Prowers/Lamar, \$24,723	Denver & Rio Grande Western Railroad Depot, Town of La Jara, Construction Documents, Conejos/La Jara, \$28,911
Bent County Jail, Bent County, Preservation and Rehabilitation, Bent/Las Animas, \$297,607	Clesson Cabin, Alma Foundation, Roof Rehabilitation, Park/Alma, \$33,586	Denver & Rio Grande Western Railroad Excelsior Station—Depot, Dominguez Archaeological Research Group, Inc., Archaeology Assessment, Mesa/Rural, \$10,000
Bentley Building—Pool Hall—Plains Theatre, Town of Eads, Roof Rehabilitation, Kiowa/Eads, \$92,337	Colorado Building, Pueblo Performing Arts Guild, Historic Structure Assessment, Pueblo/Pueblo, \$10,000	Denver APTI 2010, Association for Preservation Technology—Rocky Mountain Chapter, Conference, Regional, \$35,000



SHF BY THE NUMBERS

Total awarded projects for fiscal year 2010: 182

Value of those 182 grants: \$14,956,061

Total awarded projects since SHF inception: 3,778

Value of all grants since SHF inception: \$247,193,951

A map of total State Historical Fund grant dollars awarded by county follows the lists of grants awarded and closed in

Fiscal Year 2010 on the following pages.

Denver Carnegie Library—McNichols Civic Center Building, City and County of Denver—Office of Cultural Affairs, Interior and Exterior Restoration and Rehabilitation, Denver/Denver, \$250,000

Denver History Student Book and Teacher Resource Packet, Historic Denver, Inc., Educational Resources, Denver/Denver, \$34,900

Denver Waldorf School, Denver Waldorf School Association, Historic Structure Assessment, Denver/Denver, \$15,000

Dolores Archaeological Program; McElmo Canyon Research Institute; Preservation, Documentation, and Education; Regional; \$100,938

Durango High School, Durango School District 9R, Construction Documents, La Plata/Durango, \$144,148

Echo Lake Lodge, City and County of Denver—Department of Parks and Recreation, Exterior Restoration and Rehabilitation, Clear Creek/Rural, \$100,000

Edgeplains—Arthur House, The Colorado College, Exterior Preservation, El Paso/Colorado Springs, \$133,800

Eisenhower-Johnson Memorial Tunnels, State of Colorado—Department of Transportation, Document Archiving and Interpretation, Regional, \$18,750

El Paso County Courthouse, City of Colorado Springs—Parks and Recreation Department, Exterior Rehabilitation, El Paso/Colorado Springs, \$145,669

Emma Stone, Pitkin County Open Space and Trails, Stabilization, Pitkin/Rural, \$278,325

Equitable Building, Historic Denver, Inc., Exterior Restoration, Denver/Denver, \$105,421

Field Officers' Quarters, Friends of Historic Fort Logan, Masonry Restoration, Denver/Denver, \$31,662

Fire House #1, Denver Firefighters Museum, Masonry Restoration, Denver/Denver, \$20,440

First Baptist Church of Greeley, Historic Greeley, Inc., Interior and Exterior Rehabilitation and Mechanical/Electrical Upgrades, Weld/Greeley, \$126,248

First Baptist Church of Moffat, Town of Moffat, Preservation and Rehabilitation, Saguache/Moffat, \$244,827

First Methodist Episcopal Church of Windsor, First United Methodist Church of Windsor, Interior and Exterior Rehabilitation, Weld/Windsor, \$13,200

First National Bank Building/Rehder Building, City of Steamboat Springs, Roof Rehabilitation, Routt/Steamboat Springs, \$150,000

First National Bank of Buena Vista Building, Town of Buena Vista, Window Rehabilitation, Chaffee/Buena Vista, \$19,000

First Presbyterian Church, First Presbyterian Church, Exterior Rehabilitation, Pueblo/Pueblo, \$217,462

Fort Collins Masonic Temple, Fort Collins Masonic Home Association, Inc., Historic Structure Assessment, Larimer/Fort Collins, \$15,000

Fort Lyon Officers' Row, Colorado Department of Corrections, Roof Repair and Replacement, Bent/Rural, \$195,048

Fort Robideau Site, Montrose Rotary Club Youth Foundation, Archaeological Assessment, Delta/Rural, \$10,000

Fourth Church of Christ Scientist, Zen Center of Denver, Roof and Foundation Rehabilitation and Electrical Upgrades, Denver/Denver, \$183,198

Frying Pan Kilns, Town of Basalt, Stabilization and Preservation, Eagle/Basalt, \$78,189

Frying Pan Kilns, Town of Basalt, Stabilization, Eagle/Basalt, \$176,443

Gallegos House, Costilla County Economic Development Council, Historic Structure Assessment, Costilla/San Luis, \$9,775

Gallegos House, Costilla County Economic Development Council, Acquisition, Costilla/San Luis, \$20,250

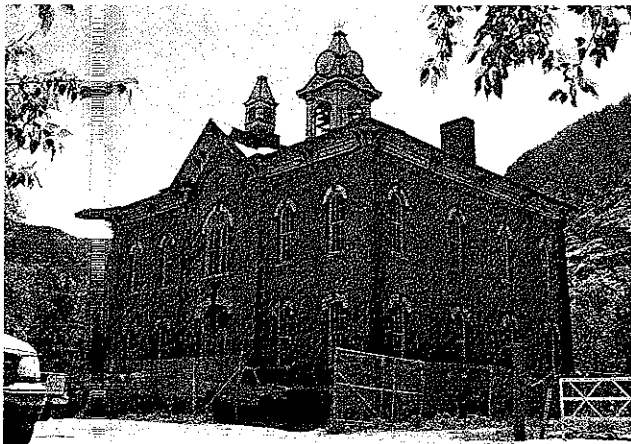
Garden Park School, Gold Belt Tour Scenic and Historic Byway Association, Exterior Stabilization, Fremont/Canon City, \$70,860

Gateway Interpretation for Northwest Colorado, Community Agriculture Alliance, Interpretive Signage: Cultural Heritage Tourism Program, Routt/Countywide, \$83,175

Georgetown School, Georgetown Trust for Conservation & Preservation, Inc., Historic Structure Assessment, Clear Creek/Georgetown, \$15,000

Glade Guard Station, Dominguez Archaeological Research Group, Inc., Interior Rehabilitation, Dolores/Rural, \$33,288

Golden Elks Lodge #2740, Benevolent & Protective Order of the Elks 2740 Golden, Historic Structure Assessment, Jefferson/Golden, \$12,979



The Georgetown School, and restoration project leader Cindy Neely



Goodman Point Unit and Albert Porter Pueblo, Crow Canyon Archaeological Center Education Program: Exploring Ancestral Pueblo Communities, Regional, \$205,886

Grace Episcopal Church, Grace Episcopal Church of Georgetown, Organ Restoration, Clear Creek/Georgetown, \$10,000

Granada Relocation Center; Colorado Seminary, a Colorado not-for-profit corporation that owns and operates the University of Denver; Archaeology Field School; Prowers/Rural, \$32,509

Gunnison West School, Gunnison-Hinsdale Youth Services, Inc. dba Gunnison County Partners, Historic Structure Assessment, Gunnison/Gunnison, \$7,535

Hamill House-Office Building, Historic Georgetown, Inc., Roof Rehabilitation, Clear Creek/Georgetown, \$35,000

Hartman Gymnasium, Town of Hartman, Masonry Rehabilitation, Prowers/Hartman, \$29,700

Harvey J. Parish House, Johnstown Historical Society, Construction Documents, Weld/Johnstown, \$19,295

Hiwan Homestead; Jefferson County, Colorado; Masonry Restoration; Jefferson/Evergreen; \$64,900

Holly Gymnasium, Holly School District RE3, Historic Structure Assessment, Prowers/Holly, \$10,000

Homesteading in Southeastern Colorado, Colorado Preservation, Inc., National Register Nominations and Interpretation, Regional, \$141,696

Hotchkiss Community United Methodist Church, Hotchkiss United Methodist Church, Historic Structure Assessment, Delta/Hotchkiss, \$12,180

Hoverhome, St. Vrain Historical Society, Inc., Exterior Preservation and Restoration, Boulder/Longmont, \$106,365

I.G. Arnold Ranch, Yampatika Outdoor Awareness Association, Interpretive Program, Routt/Rural, \$25,050

Idaho Springs Public Library, Clear Creek County Library District, Exterior Rehabilitation, Clear Creek/Idaho Springs, \$124,634

Isaac J. Henderson House, United Way of Larimer County, Inc., Exterior Rehabilitation, Larimer/Loveland, \$8,254

J Bar Double C Ranch Camp Lodge Building, Robert E. Loup Jewish Community Center, Historic Structure Assessment, Elbert/Elbert, \$10,000

James Fleming House, Denver Parks and Recreation Foundation, Inc. dba The Park People, Interior and Exterior Rehabilitation, Denver/Denver, \$250,000

JCRS Isaac Solomon Synagogue, Historic Denver, Inc., Restoration and Stabilization, Jefferson/Lakewood, \$71,789

Kim School, Kim School District, Preliminary Design, Las Animas/Kim, \$30,788

La Plata County Rural Schools, San Juan Mountains Association, Study and Interpretation, La Plata/Countywide, \$68,914

Loveland Feed and Grain, Novo Restoration, Inc., Structural Stabilization, Larimer/Loveland, \$22,245

Mancos Opera House, Mancos Opera House Architectural Restoration and Preservation Society (MOHARPS), Window Replacement and Roof Repair, Montezuma/Mancos, \$50,129

Marcia Pullman Car, Craig Chamber of Commerce, Exterior Restoration, Moffat/Craig, \$11,484

Mathews-Gottlieb Mansion, Colorado Preservation, Inc., Exterior Rehabilitation, Denver/Denver, \$206,815

Mathews-Gottlieb Mansion, Colorado Preservation, Inc., Exterior Restoration and Rehabilitation, Denver/Denver, \$204,223

Maytag Aircraft Building, CASA of the Pikes Peak Region, Inc., Historic Structure Assessment, El Paso/Colorado Springs, \$10,000

McClane Canyon Rock Shelter, Dominguez Archaeological Research Group, Inc., Archaeological Excavation, Garfield/Rural, \$149,920

McWilliams House, Grace Church and St. Stephen's dba Grace and St. Stephen's Episcopal Church, Historic Structure Assessment, El Paso/Colorado Springs, \$10,000

Milliken Grain Elevator, Town of Milliken, Historic Structure Assessment, Weld/Milliken, \$14,000

Milliken Police Station, Town of Milliken, Historic Structure Assessment, Weld/Milliken, \$9,000

Milner-Schwarz House, City of Loveland, Exterior Rehabilitation, Larimer/Loveland, \$139,350

Minnequa Steel Works Office and Dispensary, Bessemer Historical Society, Construction Documents, Pueblo/Pueblo, \$189,112

Miramont Castle Museum, Manitou Springs Historical Society, Historic Structure Assessment, El Paso/Manitou Springs, \$10,000

Montezuma Valley Bank Building, Community Radio Project, Interior and Exterior Rehabilitation and Reconstruction, Montezuma/Cortez, \$240,442

Montrose County Courthouse, Montrose County, Historic Structure Assessment, Montrose/Montrose, \$35,000

Murdock Building, Kiowa County, Stabilization and Rehabilitation, Kiowa/Eads, \$297,474

Ohio City Town Hall, Gunnison County dba Gunnison Board County Commissioners, Historic Structure Assessment, Gunnison/Ohio City, \$15,000

Old Fort Lewis Library; Fort Lewis College; Preservation, Rehabilitation, and Systems Upgrades; La Plata/Hesperus, \$203,633

Old Red Cliff Town Hall and Firehouse, Town of Red Cliff, Historic Structure Assessment, Eagle/Red Cliff, \$10,950

Ordway Town Hall, Town of Ordway, Exterior Restoration and Rehabilitation and Electrical Upgrade, Crowley/Ordway, \$175,000

Paramount Cottage Camp, City of Fort Collins, Exterior Restoration and Rehabilitation, Larimer/Fort Collins, \$66,600

Perry-Mansfield Performing Arts School and Camp-Main Studio, Perry-Mansfield Performing Arts School and Camp, Exterior Restoration and Rehabilitation, Routt/Steamboat Springs, \$196,956

Pine Grove Community Center, Pine-Elk Creek Improvement Association, Exterior Rehabilitation, Jefferson/Pine Grove, \$113,582

Pisgah Mountain Wickiup Village, Dominguez Archaeological Research Group, Inc., Archaeology Assessment, Eagle/Rural, \$9,990

Ponderosa Lodge, La Foret Conference & Retreat Center, Inc., Construction Documents, El Paso/Black Forest, \$22,333

Preservation for Living, Historic Denver, Inc., Education Program, Regional, \$34,076

Puzzle House Archaeological Community, The Archaeological Conservancy, Acquisition and Preservation, Montezuma/Rural, \$189,805

Randell-Moore School of Denver-Iliff Mansion, Randell-Moore School of Denver, Historic Structure Assessment, Denver/Denver, \$12,738

Randell-Moore School of Denver-Iliff Mansion Carriage House, Randell-Moore School of Denver, Historic Structure Assessment, Denver/Denver, \$5,153

Rankin Presbyterian Church, Rankin Presbyterian Church, Exterior Rehabilitation, Morgan/Brush, \$164,782

Rehder Ranch, Yampa Valley Land Trust, Inc., Historic Structure Assessment, Routt/Rural, \$15,000



Rex Gym, Adams State College, Exterior Rehabilitation, Alamosa/Alamosa, \$198,986

Reynolds Block Building, The Victor Improvement Association, Inc., Structural Stabilization and Storefront Rehabilitation, Teller/Victor, \$104,196

Reynolds Block-Victor Stock Exchange-Lowell Thomas Museum, Victor Improvement Association, Inc., Structural Stabilization and Window Restoration, Teller/Victor, \$194,613

Rockvale Schoolhouse, Town of Rockvale, Historic Structure Assessment, Fremont/Rockvale, \$14,920

Rudd House, City of Canon City, Exterior Restoration, Fremont/Canon City, \$62,620

Russell Gates Mercantile Building, Elbert Woman's Club, Inc. dba Russell Gates Mercantile Co., Exterior Rehabilitation, Elbert/Elbert, \$64,431

Salida Elks Lodge #808, Salida Elks Lodge #808 BPOE, Roof Repair and Accessibility Design, Chaffee/Salida, \$81,242

Sand Wash Basin Quarries, Colorado Archaeological Society-Vermillion Chapter, Archaeological Survey, Moffat/Rural, \$89,503

Schweiger Ranch Main House, Silo, and Stable, Schweiger Ranch Foundation, Stabilization and Restoration, Douglas/Lone Tree, \$227,624

Seventeen Mile House, Arapahoe County Government-Open Space Division, Interior Rehabilitation and Restoration, Arapahoe/Centennial, \$175,007

Shenandoah-Dives Mill, San Juan County Historical Society, Inc., Stabilization and Rehabilitation, San Juan/Silverton, \$268,380

Shoenberg Farm-House and Garage, City of Westminster, Construction Documents, Jefferson/Westminster, \$18,000

Silverton Northern Caboose No. 1005, San Juan County Historical Society, Inc., Restoration, San Juan/Silverton, \$74,250

Silverton Public School, San Juan County School District #1, Exterior Rehabilitation and Restoration, San Juan/Silverton, \$342,188

Sixth Avenue United Church of Christ, Sixth Avenue United Church dba United Church of Christ, Historic Structure Assessment, Denver/Denver, \$13,741

Solandt Memorial Hospital, Solandt Memorial Hospital District, Exterior Rehabilitation and Accessibility Compliance, Routt/Hayden, \$150,000

Spratlen-Anderson Building, Historic Denver, Inc., Facade Preservation, Denver/Denver, \$32,016

St. Dominic's Catholic Church, St. Dominic Parish, Inc., Interior and Exterior Rehabilitation, Denver/Denver, \$148,432

St. Francis of Assisi Mission Church, Cornerstones Community Partnerships, Emergency Stabilization and Construction Documents, Rio Grande/Rural, \$34,031

St. William's Lodge at Camp St. Malo, Christian Life Movement, Inc., Historic Structure Assessment, Boulder/Rural, \$22,095

Stanley School/Montclair School, Paddington Station, Inc. dba Paddington Preschool, Exterior Rehabilitation, Denver/Denver, \$263,585

Star Hook & Ladder Company Building, Town of Georgetown, Historic Structure Assessment, Clear Creek/Georgetown, \$11,000

Tears-McFarlane House, Capitol Hill United Neighborhoods, Inc., Window and Door Restoration, Denver/Denver, \$60,062

Teller House, Central City Opera House Association, Masonry Restoration and Assessment, Gilpin/Central City, \$65,341

Telluride NHLD, Town of Telluride, Update Historic and Architectural Survey, San Miguel/Telluride, \$10,000

Temple Emanuel, Historic Denver, Inc., Exterior Restoration, Denver/Denver, \$175,193

Tobasco Gold Mining and Milling Company-Tobasco Cabin; Hinsdale County Historical Society; Stabilization, Preservation, and Interpretation; Hinsdale/Rural; \$86,151

Uncompahgre Peak Site, Paleocultural Research Group (PCRG), Archaeology Assessment, Hinsdale/Rural, \$9,997

Valmont Butte Mill, City of Boulder, Historic Structure Assessment, Boulder/Rural, \$15,000

Various, Colorado Preservation, Inc., Conference-Saving Places 2011: The Economics of Historic Preservation, Statewide, \$108,429

Various, Dominguez Archaeological Research Group, Inc., Wickiup Documentation, Regional, \$34,879

Various, Dominguez Archaeological Research Group, Inc., Colorado Radiocarbon Database Project, Statewide, \$26,197

Various, Colorado Preservation, Inc., Education Program: 2010 Colorado Preserve America Youth Summit, Statewide, \$35,000

Various, Southeast Colorado Regional Heritage Task Force, Video: Southeast Colorado Historic Sites, Regional, \$50,000

Various, Crow Canyon Archaeological Center, Interpretive Materials, Montezuma/Rural, \$71,789

Various; History Colorado, the Colorado Historical Society; Certified Local Government Training Program; Statewide; \$50,000

Various, Historic Denver, Inc., Cultural Resource Survey Methodology, Regional, \$25,800

Various, State of Colorado-Colorado Tourism Office, Colorado Heritage Tourism, Statewide, \$200,000

Various, Colorado Preservation, Inc., Colorado's Most Endangered Places Program, Statewide, \$65,000

Various; History Colorado, the Colorado Historical Society; Colorado Cultural Resource Data Dissemination Program-Phase II; Statewide; \$159,200

Various, The Old North End Neighborhood, Publication: Colorado Springs Old North End Neighborhood, El Paso/Colorado Springs, \$14,845

Various, Douglas County, Intensive Survey, Douglas/Countywide, \$18,370

Various Tarryall Road Properties, Park County, Intensive Survey, Park/Rural, \$20,134

Vermillion Rim, Moffat County Government, Archaeological Assessment, Moffat/Rural, \$9,984

Vilas School, Baca County School District #5, Historic Structure Assessment, Baca/Vilas, \$14,733

Villa Park Congregational Church, Seventh Avenue Congregation Church, Interior Rehabilitation, Denver/Denver, \$15,592

Walsenburg Depot, City of Walsenburg, Historic Structure Assessment, Huerfano/Walsenburg, \$13,646

Welborn House, Colorado Academy, Historic Structure Assessment, Denver/Denver, \$10,000

Windsor Milling and Elevator Company Building, Greeley/Weld County Economic Development Action Partnership, Inc. dba Upstate Colorado Economic Development, Exterior Reconstruction, Weld/Windsor, \$275,495

Wright Opera House, Friends of the Wright Opera House, Inc., Acquisition, Ouray/Ouray, \$225,000

Wyatt Elementary School, Wyatt-Edison Charter School, Structure Assessment, Denver/Denver, \$12,855

Zion Congregational Church-Zion United Church of Christ, Zion Congregational Church, Exterior Restoration and Rehabilitation, Logan/Sterling, \$80,852

# PROJECTS CLOSED IN FISCAL YEAR 2010

(JULY 1, 2009–JUNE 30, 2010)

Property Name, Grant Recipient, Project Title, County/Location, Closed Date, Grant Amount (sorted by property name)

All Souls Unitarian Universalist Church, All Souls Unitarian Universalist Church, Historic Structure Assessment, El Paso/Colorado Springs, 4/26/10, \$10,000

Amethyst Cemetery, Mineral County, Archaeological Assessment, Mineral/Creede, 9/9/09, \$10,000

Arroyo del Arenal, Friends of the Dunes, Archaeological Assessment, Saguache/Rural, 9/28/09, \$9,976

Ault High School, Weld County School District RE-9, Interior Restoration, Weld/Ault, 8/28/09, \$227,000

Bee Family Farm Centennial Farm Museum, Bee Family Centennial Farm, Historic Structure Assessment, Larimer/Rural, 4/6/10, \$10,000

Bent County Courthouse, Bent County, Interior and Exterior Rehabilitation and Restoration, Bent/Las Animas, 4/14/10, \$407,682

Bent County Courthouse and Jail, Bent County, Interior and Exterior Rehabilitation, Bent/Las Animas, 3/30/10, \$170,585

Bent County Courthouse and Jail, Bent County, Exterior Preservation, Bent/Las Animas, 4/14/10, \$226,128

Bent County Courthouse and Jail, Bent County, Interior Rehabilitation and Roof Restoration, Bent/Las Animas, 5/20/10, \$300,000

Bentley Building–Pool Hall–Plains Theatre, Town of Eads, Structural Stabilization, Kiowa/Eads, 3/30/10, \$88,246

Bentley Building–Pool Hall–Plains Theatre, Town of Eads, Historic Structure Assessment and Design Documents, Kiowa/Eads, 4/26/10, \$46,973

Bent's Old Fort Cultural Landscape Interpretation, Colorado Preservation, Inc., Interpretive Signage, Otero/La Junta, 11/13/09, \$33,793

Berkeley United Methodist Church, Berkeley United Methodist Church, Historic Structure Assessment, Jefferson/Mountain View, 1/7/10, \$5,500

Bethel Church of God in Christ, Bethel Church of God in Christ, Construction Documents, Denver/Denver, 3/26/10, \$17,160

Boettcher Memorial Conservatory, Denver Botanic Gardens, Inc., Exterior Preservation, Denver/Denver, 7/6/09, \$24,700

Bowles House, City of Westminster, Historic Structure Assessment, Adams/Westminster, 11/13/09, \$9,970

Brick Plant Manager's House, Golden Landmarks Association, Exterior Restoration and Stabilization, Jefferson/Golden, 5/17/10, \$120,000

Bromley–Koizuma–Hishinuma Farm, City of Brighton, Master Plan and Historic Structure Assessment, Adams/Brighton, 6/24/10, \$75,000

Buford School, Rio Blanco County Historical Society, Inc. dba White River Community Club, Interior and Exterior Rehabilitation and Restoration, Rio Blanco/Rural, 8/26/09, \$198,657

Calkins Building, Montezuma-Cortez School District RE-1, Interior and Exterior Restoration, Montezuma/Cortez, 1/25/10, \$229,189

Cameron United Methodist Church, Cameron United Methodist Church, Exterior Stabilization and Restoration, Denver/Denver, 9/1/09, \$185,899

Camfield Court Building, Greeley Downtown Development Authority Foundation, Exterior Restoration, Weld/Greeley, 7/31/09, \$114,736

Canon City Elks Lodge No. 610, Canon City Lodge #610, Benevolent & Protective Order of Elks, Exterior Restoration, Fremont/Canon City, 3/29/10, \$22,500

Cardinal Mill, Boulder County, Structural Stabilization, Boulder/Nederland, 9/17/09, \$213,797

Chamberlin Observatory, Colorado Seminary, a Colorado not-for-profit corporation that owns and operates the University of Denver, Exterior Restoration, Denver/Denver, 9/1/09, \$199,585

Charles and Julia Semper Farm, City of Westminster, Exterior Restoration and Rehabilitation, Jefferson/Westminster, 1/28/10, \$132,349

Charline Place, Charline Place Condominium Association, Historic Structure Assessment, Denver/Denver, 3/29/10, \$10,000

Church of the Holy Redeemer, Historic Denver, Inc., Structural Investigation, Denver/Denver, 12/11/09, \$14,136

Churches Ranch Barn, City of Arvada, Exterior Restoration, Jefferson/Arvada, 1/28/10, \$156,792

City and County of Broomfield, City and County of Broomfield, Cultural Resource Survey, Broomfield/Broomfield, 12/23/09, \$20,272

City Cemetery, City of Grand Junction, Preservation Plan, Mesa/Grand Junction, 1/14/10, \$6,000

City of Steamboat Springs, East Routt Library District, Book Publication–Then and Now: A History of Steamboat Springs, Routt/Steamboat Springs, 11/12/09, \$17,776

Clesson Cabin, Alma Foundation, Construction Documents and Stabilization, Park/Alma, 7/28/09, \$42,766

Colorado State Fairgrounds Horse Stalls, Colorado Department of Agriculture dba Colorado State Fair, Roof Preservation, Pueblo/Pueblo, 4/29/10, \$151,722

Como Railroad Depot, Colorado Preservation, Inc., Exterior Restoration, Park/Como, 5/3/10, \$35,000

Cross Mountain Rock Art, Colorado Archaeological Society–Vermillion Chapter, Archaeological Assessment, Moffat/Rural, 6/24/10, \$4,717

Dearfield Filling Station, Colorado Preservation, Inc., Historic Structure Assessment, Weld/Dearfield, 3/9/10, \$14,578

Debs Schoolhouse, Hinsdale County Government, Historic Structure Assessment, Hinsdale/Lake City, 1/5/10, \$9,500

DeGraff Building, Colorado Springs Community Ventures, Inc., Historic Structure Assessment, El Paso/Colorado Springs, 1/14/10, \$5,000

Denver & Rio Grande Depot, City of Montrose, Historic Structure Assessment, Montrose/Montrose, 9/16/09, \$10,000

Denver & Rio Grande Western Railroad Depot, City of Grand Junction, Historic Structure Assessment, Mesa/Grand Junction, 3/31/10, \$10,000

Denver & Rio Grande Western Railroad Depot, Town of La Jara, Exterior Preservation, Conejos/La Jara, 5/17/10, \$95,795

Denver Children's Home, Denver Children's Home, Roof Restoration, Denver/Denver, 6/28/10, \$165,000

Denver, Leadville & Gunnison Depot, Buena Vista Heritage Museum, Exterior Restoration, Chaffee/Buena Vista, 3/29/10, \$105,000

Downtown Denver Central YMCA and Annex, Colorado Coalition for the Homeless, Exterior Restoration, Denver/Denver, 2/22/10, \$212,123

Downtown Windsor, Town of Windsor, Cultural Resource Survey, Weld/Windsor, 4/15/10, \$17,933

Doyle Block, Southern Teller County Focus Group, Historic Structure Assessment, Teller/Victor, 9/28/09, \$9,000

Edgeplain-Arthur House, The Colorado College, Exterior Restoration, El Paso/Colorado Springs, 4/22/10, \$115,000

El Paso County Courthouse, Friends of the Colorado Springs Pioneers Museum, Construction Documents, El Paso/Colorado Springs, 8/31/09, \$59,400

EM Ranch-Santa Maria Ranch, Park County, Stabilization, Park/Rural, 2/22/10, \$49,790

Ewing Family Farmhouse, City of Lafayette, Interior Rehabilitation and Exterior Restoration, Boulder/Lafayette, 4/29/10, \$62,083

First Avenue Presbyterian Church, First Avenue Presbyterian Church, Interior and Exterior Restoration, Denver/Denver, 4/7/10, \$152,530

First Baptist Church, Historic Greeley, Inc., Interior Rehabilitation and Exterior Restoration, Weld/Greeley, 3/29/10, \$75,916

First Congregational Church, First Congregational Church of Colorado Springs, Window and Exterior Restoration, El Paso/Colorado Springs, 3/9/10, \$47,515

First Congregational Church, First Congregational Church of Colorado Springs, Window Restoration, El Paso/Colorado Springs, 7/31/09, \$58,143

First Congregational Church, First Congregational Church of Colorado Springs, Exterior Restoration, El Paso/Colorado Springs, 7/31/09, \$151,280

First Congregational Church, First Congregational Church of Colorado Springs, Window and Door Restoration, El Paso/Colorado Springs, 9/28/09, \$113,620

First Congregational Church, First Congregational Church of Colorado Springs, Construction Documents, El Paso/Colorado Springs, 1/11/10, \$14,640

First Presbyterian Church, Aspen Community United Methodist Church dba Aspen Community Church, Historic Structure Assessment, Pitkin/Aspen, 7/28/09, \$10,000

First United Methodist Church of Windsor, First United Methodist Church of Windsor, Interior Rehabilitation and Exterior Restoration, Weld/Windsor, 6/17/10, \$296,955

First United Presbyterian Church, First United Presbyterian Church, Interior and Exterior Restoration, Larimer/Loveland, 3/29/10, \$61,700

Flagler Town Hall, Town of Flagler, Historic Structure Assessment, Kit Carson/Flagler, 2/22/10, \$13,488

Fleming House-Fleming Mansion, The Denver Parks and Recreation Foundation, Inc. dba The Park People, Construction Documents, Denver/Denver, 2/22/10, \$23,250

Fleming Town Hall, Town of Fleming, Historic Structure Assessment, Logan/Fleming, 3/8/10, \$9,895

Fort Garland, History Colorado, the Colorado Historical Society; Exhibit-Saving the Fort: 150 Years of History; Costilla/Fort Garland; 7/8/09; \$50,000

Fred Sower Barn, La Plata County School District 10 JT-R-Bayfield, Historic Structure Assessment, La Plata/Bayfield, 10/16/09, \$8,500

Frisco Historic Park, Town of Frisco, Historic Structure Assessment and Preservation Plan, Summit/Frisco, 6/14/10, \$33,580

Frying Pan Kilns, Town of Basalt, Construction Documents, Eagle/Basalt, 10/13/09, \$19,348

Garden Park School, Gold Belt Tour Scenic and Historic Byway Association, Historic Structure Assessment, Fremont/Rural, 3/30/10, \$9,311

Georgetown School, Georgetown Trust for Conservation & Preservation, Inc., Exterior Restoration, Clear Creek/Georgetown, 10/16/09, \$317,884

German Congregational Church, Community of Christ, Exterior Restoration and Interior Rehabilitation, Boulder/Longmont, 2/1/10, \$132,756

Glen Isle Lodge, Colorado Preservation, Inc., Roof Restoration, Park/Bailey, 9/28/09, \$34,602

Grand Theater, City of Rocky Ford, Exterior Rehabilitation and Auditorium Seat Restoration, Otero/Rocky Ford, 10/1/09, \$170,442

Greeley State Armory Building, Historic Greeley, Inc., Historic Structure Assessment, Weld/Greeley, 3/29/10, \$6,194

Green Mountain Falls Gazebo, Town of Green Mountain Falls, Exterior Restoration, El Paso/Green Mountain Falls, 10/5/09, \$41,598

Hanging Flume, Western Colorado Interpretive Association, Interpretive Plan and Construction Documents, Montrose/Rural, 5/21/10, \$135,706

Hartman Gymnasium, Town of Hartman, Masonry Rehabilitation, Prowers/Hartman, 4/22/10, \$29,700

Healy House; History Colorado, the Colorado Historical Society; Historic Structure Assessment; Lake/Leadville; 7/7/09; \$14,841

Heller Estate; Regents of the University of Colorado, University of Colorado at Colorado Springs; Master Plan and Historic Structure Assessment; El Paso/Colorado Springs; 4/15/10; \$91,450

Highlands United Methodist Church, Highlands United Methodist Church, Exterior Restoration, Denver/Denver, 4/6/10, \$27,353

Hooper Town Hall, Town of Hooper, Historic Structure Assessment, Alamosa/Hooper, 7/28/09, \$6,500

Hornbein Building, City of Aurora, Exterior Rehabilitation, Adams/Aurora, 3/31/10, \$74,973

Hotel de Paris, National Society of the Colonial Dames of America in the State of Colorado, Water Intrusion Study, Clear Creek/Georgetown, 3/29/10, \$59,196

Hotel de Paris, National Society of the Colonial Dames of America in the State of Colorado, Window Restoration, Clear Creek/Georgetown, 10/7/09, \$23,694

Hoverhome and Hover Farmstead, St. Vrain Historical Society, Inc., Interior and Exterior Restoration and Rehabilitation, Boulder/Longmont, 7/6/09, \$75,605

Huerfano County High School-Walsenburg Middle School, Spanish Peaks Library District, Interior and Exterior Rehabilitation, Huerfano/Walsenburg, 3/30/10, \$255,000

Huerfano County High School-Walsenburg Middle School, Spanish Peaks Library District, Window Rehabilitation, Huerfano/Walsenburg, 5/20/10, \$298,950

I.O.O.F. Hall, Lodge No. 11, Pioneer Historical Society of Bent County, Interior Restoration, Bent/Las Animas, 9/28/09, \$260,000

Iliff Hall, Iliff School of Theology, Roof and Window Restoration, Denver/Denver, 10/16/09, \$200,000

Independence Town and Mill Site, Aspen Historical Society, Preservation Plan, Pitkin/Rural, 5/21/10, \$30,000

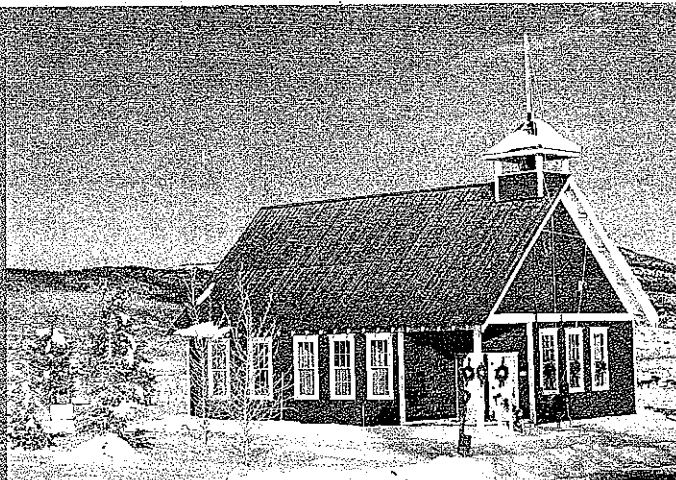
Indian Park Schoolhouse, Indian Park Schoolhouse Association, Interior and Exterior Rehabilitation, Douglas/Sedalia, 6/15/10, \$40,822

James A. Lancaster Site, The Archaeological Conservancy, Acquisition, Montezuma/Rural, 11/4/09, \$85,280

Jamison Building-A.R. Mitchell Building, Arthur Roy Mitchell Memorial, Inc., Construction Documents, Las Animas/Trinidad, 3/29/10, \$31,625

Jimmy Camp Park, Regents of the University of Colorado, Artifact Analysis, El Paso/Rural, 10/23/09, \$12,144

Kiowa Creek Community Church Chapel, Kiowa Creek Community Church, Historic Structure Assessment, Elbert/Kiowa, 10/7/09, \$9,972



*Mesa Schoolhouse in Steamboat Springs*



*Saint Vincent's Hospital in Leadville after roof restoration*

La Plata County, La Plata County, Cultural Resource Survey, La Plata/Countywide, 6/30/10, \$93,792

Lennox House, The Colorado College, Exterior Restoration and Stabilization, El Paso/Colorado Springs, 1/25/10, \$162,980

Logan County Courthouse, Logan County dba Logan County Commissioners, Interior and Exterior Restoration and Mechanical Upgrades, Logan/Sterling, 1/25/10, \$250,000

Lyons Redstone Museum, Lyons Historical Society dba Lyons Redstone Museum, Exterior Restoration, Boulder/Lyons, 2/1/10, \$93,272

Majestic Opera House, City of Loveland, Historic Structure Assessment, Larimer/Loveland, 5/20/10, \$13,700

Manzanola High School, Otero County School District #3J Manzanola, Preservation Plan, Otero/Manzanola, 9/11/09, \$25,823

Martha Rose Smelter, San Juan County, Archaeological Assessment, San Juan/Silverton, 9/11/09, \$6,112

Masonic Temple, St. Vrain Lodge No. 23 A.F. & A.M., A Fraternal Society, Elevator and Utilities Rehabilitation; Boulder/Longmont; 2/1/10; \$113,138

Mathews-Gotthelf Mansion, Colorado Preservation, Inc., Exterior Restoration, Denver/Denver, 5/17/10, \$208,000

McDonald Creek, Museum of Western Colorado, Pictograph Documentation and Interpretation, Mesa/Rural, 9/11/09, \$1,760

Mesa Schoolhouse, City of Steamboat Springs, Interior and Exterior Restoration, Routt/Rural, 8/28/09, \$43,500

Mesa Verde National Park Archaeological District—Alcove Sites, Mesa Verde Museum Association, Inc., Archaeological Assessment, Montezuma/Mesa Verde National Park, 10/7/09, \$130,994

Midland Depot at Divide, Teller Historic and Environmental Coalition, Archaeological Assessment, Teller/Divide, 3/26/10, \$9,916

Montezuma Valley National Bank, Community Radio Project, Historic Structure Assessment, Montezuma/Cortez, 10/13/09, \$13,000

Morris III Site, Cortez Center, Inc. dba Cortez Cultural Center; Structural Stabilization, Montezuma/Ute Mountain Tribal Park, 3/29/10, \$66,065

Old Trail School, Wiggins Historical Group, Inc., Interior and Exterior Restoration, Morgan/Rural, 3/30/10, \$60,426

Ordway Town Hall, Town of Ordway, Exterior Stabilization, Crowley/Ordway, 4/7/10, \$233,742

Ouray Elks Lodge #492, Benevolent & Protective Order of Elks of the USA #492, Historic Structure Assessment, Ouray/Ouray, 5/20/10, \$9,785

Oxford Hotel, Historic Denver, Inc., Canopy Reconstruction, Denver/Denver, 1/5/10, \$35,000

Palisade High School, Town of Palisade, Historic Structure Assessment, Mesa/Palisade, 1/14/10, \$14,955

Pitkin Town Hall, Town of Pitkin, Exterior Restoration, Gunnison/Pitkin, 3/30/10, \$18,900

Pitkin Town Hall, Town of Pitkin, Exterior Rehabilitation, Gunnison/Pitkin, 3/30/10, \$120,013

Pueblo County Courthouse, Pueblo County Board of Commissioners, Clock Restoration, Pueblo/Pueblo, 12/23/09, \$18,000

Ramsey-Koenig Ranch, The Board of Governors of the Colorado State University System acting by and through Colorado State University dba Colorado State University, Interpretation Plan, Larimer/Rural, 1/11/10, \$25,000

Rankin Presbyterian Church, Rankin Presbyterian Church, Historic Structure Assessment, Morgan/Brush, 6/24/10, \$10,000

Red Mountain Open Space, Larimer County Parks and Open Lands, Archaeological Survey, Larimer/Rural, 4/27/10, \$18,469

Rex Gymnasium, Adams State College, Construction Documents, Alamosa/Alamosa, 7/17/09, \$24,985

Reynolds Block—Victor Stock Exchange—Lowell Thomas Museum, Victor Improvement Association, Inc., Exterior Restoration, Teller/Victor, 4/14/10, \$208,177

Rodeo Market, City of Westminster, Exterior Restoration, Adams/Westminster, 6/9/10, \$79,165

Routt County Courthouse, Routt County, Window Restoration, Routt/Steamboat Springs, 3/9/10, \$250,000

Russell Gates Mercantile Building, Elbert Woman's Club, Inc. dba Russell Gates Mercantile Co., Exterior Restoration, Elbert/Elbert, 3/9/10, \$68,240

Russell Gates Mercantile Building, Elbert Woman's Club, Inc. dba Russell Gates Mercantile Co., Exterior Restoration, Elbert/Elbert, 10/13/09, \$187,115

Saint Vincent's Hospital, City of Leadville, Exterior Restoration, Lake/Leadville, 12/23/09, \$168,300

Salt Works Ranch Main House, Park County Historical Society, Exterior Restoration, Park/Rural, 3/29/10, \$24,999

San Francisco Morada, Sociedad de Nuestro Padre Jesus Nazareno, Site Drainage Improvements, Costilla/San Francisco, 11/12/09, \$88,629

San Isabel National Forest, Regents of the University of Colorado, Archaeological Assessment, Park/Rural, 7/28/09, \$9,980

San Juan County Jail, San Juan County Historical Society, Inc., Exterior Rehabilitation, San Juan/Silverton, 3/29/10, \$87,884

San Rafael Presbyterian Church, United Presbyterian Church, Interior Rehabilitation and Exterior Restoration, Conejos/Mogote, 5/21/10, \$25,000

Scottish Rite Masonic Temple, Scottish Rite Cathedral Association, Pipe Organ Restoration, Denver/Denver, 6/30/10, \$187,417

Shorter AME Church, New Dance Theatre, Inc., Window Restoration and Mechanical Upgrades, Denver/Denver, 10/20/09, \$184,825

Silverton Electric Light Company Substation, San Juan County Historical Society, Inc., Building Rehabilitation, San Juan/Rural, 9/2/09, \$35,250

Sixth Street Gym, Lake County Board of Commissioners, Exterior Rehabilitation, Lake/Leadville, 2/1/10, \$220,000

South Broadway Christian Church, South Broadway Christian Church, Organ Restoration, Denver/Denver, 6/30/10, \$79,004

Spruce Tree House, Mesa Verde Museum Association, Inc., Architectural Documentation, Montezuma/Mesa Verde National Park, 1/5/10, \$188,405

St. George Episcopal Mission, St. George Episcopal Mission, Roof Restoration, Lake/Leadville, 3/29/10, \$58,051

St. John's Episcopal Church, St. John's Episcopal Church, Exterior Preservation, Boulder/Boulder, 5/17/10, \$80,211

St. Joseph Catholic School, St. Joseph Catholic Church & School, Historic Structure Assessment, Larimer/Fort Collins, 8/31/09, \$9,760

St. Mark United Presbyterian Church, Elbert Presbyterian Church, Exterior Restoration, Elbert/Elbert, 10/13/09, \$43,673

St. Patrick's Mission Church, Historic Denver, Inc., Historic Structure Assessment, Denver/Denver, 5/21/10, \$15,000

St. Thomas Episcopal Church, Alamosa Uptown and River Association, Exterior Restoration, Alamosa/Alamosa, 5/17/10, \$85,613

State Capitol Building, State of Colorado--Department of Personnel and Administration, Life Safety Upgrades, Denver/Denver, 6/9/10, \$4,500,000

State Capitol Building, State of Colorado--Department of Personnel and Administration, Life Safety Upgrades, Denver/Denver, 6/9/10, \$6,034,240

Tears-McFarlane House, Capitol Hill United Neighborhoods, Inc., Exterior Restoration, Denver/Denver, 9/16/09, \$106,126

Temple Aaron, Colorado Preservation, Inc., Interior and Exterior Restoration, Las Animas/Trinidad, 1/4/10, \$199,341

Temple Emanuel, Historic Denver, Inc., Exterior Rehabilitation, Denver/Denver, 11/4/09, \$227,730

Temple Israel, Temple Israel Foundation, Interior Reconstruction, Lake/Leadville, 1/7/10, \$149,373

Thomas F. Gilligan Home, Mental Health Center of Denver, Exterior Restoration, Arapahoe/Aurora, 5/17/10, \$82,072

Ute Theater, Downtown Development Authority of Rifle, Historic Structure Assessment, Garfield/Rifle, 3/26/10, \$7,000

Various, Historic Denver, Inc., Historic Property Owners Brochure, Denver/Denver, 3/11/10, \$9,324

Various, Hinsdale County Government, Historic Resources Survey, Hinsdale/Countywide, 3/30/10, \$37,000

Various, Colorado Preservation, Inc., Education Program: 2009 Colorado Preserve America Youth Summit, Statewide, 4/6/10, \$35,000

Various, Historic Routt County!, Historic Register Nomination Initiative, Routt/Countywide, 4/27/10, \$7,570

Various, Colorado Railroad Historical Foundation dba Colorado Railroad Museum, Locomotive and Railcar Restoration, Jefferson/Golden, 5/12/10, \$41,900

Various, Colorado Railroad Historical Foundation dba Colorado Railroad Museum, Locomotive and Railcar Restoration, Jefferson/Golden, 5/12/10, \$25,000

Various, Colorado School of Mines, Cultural Resource Survey, Jefferson/Golden, 5/12/10, \$14,000

Various, Gilpin County, Cultural Resource Survey, Gilpin/Countywide, 5/13/10, \$41,349

Various, Colorado Preservation, Inc., Video: Historic School Use, Statewide, 6/28/10, \$140,000

Various, History Colorado, the Colorado Historical Society; Certified Local Government Training Program; Statewide; 6/30/10; \$50,000

Various, History Colorado, the Colorado Historical Society; Regional Museum Capsule History and Guide; Statewide; 7/8/09; \$47,400

Various, History Colorado, the Colorado Historical Society; Regional Museum Capsule History and Guide; Statewide; 7/8/09; \$66,607

Various, History Colorado, the Colorado Historical Society; Survey, Documentation, Preservation, and Exhibition of Ethnographic Collections; Denver/Denver; 7/14/09; \$35,000

Various, City of Manitou Springs, Historic Structure Assessment, El Paso/Manitou Springs, 7/31/09, \$30,000

Various, Historic Denver, Inc., Interpretive Signage, Denver/Denver; 10/2/09, \$24,984

Various, South Park Archaeology Project, Ltd., Archaeological Survey, Park/Rural, 10/23/09, \$14,858

Various, City of Fort Lupton, Cultural Resource Survey, Weld/Fort Lupton, 11/13/09, \$23,816

Various, National Trust for Historic Preservation, Heritage Tourism Initiative, Statewide, 12/7/09, \$278,755

Various, Colfax Business Improvement District, Survey and National Register Nomination, Denver/Denver, 12/23/09, \$22,730

Various, Colorado Preservation, Inc., Conference and Endangered Places Program, Statewide, 12/23/09, \$145,000

Various, Downtown Colorado, Inc., Colorado Main Street Program, Statewide, 12/23/09, \$100,000

Various, San Juan Mountains Association, Site Stewardship Program, Regional, 1/14/10, \$52,270

Various, Town of Bayfield, Interpretive Signage and Walking Tour Brochure, La Plata/Bayfield, 3/8/10, \$11,326

Villa Park Congregational Church, Seventh Avenue Congregation Church, Interior Rehabilitation, Denver/Denver, 3/30/10, \$15,592

Westminster University Building--Bellevue College, Pillar of Fire, Historic Structure Assessment, Adams/Westminster, 5/24/10, \$10,000

Westside Neighborhood, City of Colorado Springs, Design Guidelines, El Paso/Colorado Springs, 5/3/10, \$18,031

White Way Grill, City of Lakewood--Heritage Culture and the Arts Division, Interior and Exterior Restoration, Jefferson/Lakewood, 4/13/10, \$41,920

Whitman Elementary School, Museum of Western Colorado, Stabilization, Mesa/Grand Junction, 5/17/10, \$27,340

Wiley Rock Schoolhouse, Prowers County Historical Society, Interior and Exterior Rehabilitation and Restoration, Prowers/Wiley, 8/4/09, \$221,816

Willows Country School, The Historic Willows School Society, Historic Structure Assessment, Custer/Westcliffe, 10/2/09, \$5,500

Windsor Milling & Elevator Company Building, Colorado Preservation, Inc., Stabilization, Weld/Windsor, 9/24/09, \$10,000

Windsor Town Hall, Town of Windsor, Interior Restoration and Rehabilitation, Weld/Windsor, 4/16/10, \$164,359

Wrights Opera House, Wechawken Creative Arts, Historic Structure Assessment, Ouray/Ouray, 7/6/09, \$10,000

Yankee Girl Mine Headframe, Ouray County Historical Society, Inc., Stabilization, Ouray/Rural, 10/1/09, \$14,800

Zion Congregational Church--Zion United Church of Christ, Zion Congregational Church, Interior and Exterior Rehabilitation and Restoration, Logan/Sterling, 10/13/09, \$111,142

