

ECLC

Early Childhood Leadership Commission

Annual Report 2017



PRESENTED TO:

Governor John Hickenlooper, Senate Education Committee, Senate Health and Human Services Committee, House Education Committee, House Public Health Care and Human Services Committee, and House Health, Insurance and Environment Committee

Letter from the ECLC Co-Chairs

Dear Governor Hickenlooper and Members of the Colorado General Assembly,

The Early Childhood Leadership Commission (ECLC) is excited to share with you our sixth Annual Report. We continue to make progress working across early childhood systems to ensure that all children are healthy, valued, and thriving.

The ECLC is Colorado's federally recognized state advisory council. We serve as the trusted and proactive early childhood champion for high quality, outcome-focused learning and development, health and well-being, and family support and education. Our efforts support pregnant women, young children and their families by bridging services offered through programs and agencies, including the collaboration across five state departments. We strive to identify opportunities for, and barriers to, the coordination of early childhood policies and programs.

In 2017, our work revolved around the three main focus areas of our ECLC Strategic Plan:

- **ALIGN EARLY CHILDHOOD SYSTEMS:** Lead efforts to coordinate, align and prioritize early childhood programs so that families and children experience seamless care to meet their needs
- **EXPAND EARLY CHILDHOOD AWARENESS:** Be the strong, statewide voice for increasing engagement and expanding awareness of the essential role of early child services and supports for successes in school and life
- **ELEVATE THE EARLY CHILDHOOD WORKFORCE:** Lead efforts to increase recruitment, retention, professional training, compensation and social recognition

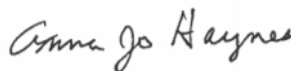
This report reflects the ECLC's work and accomplishments over 2017, as well as our priorities and commitments to all of Colorado's young children and their families. We will continue to develop partnerships with public and private early childhood organizations in collaboration with families, providers, stakeholders and advocates across the state. The ECLC also continues to facilitate cooperation and coordination with our partner state agencies – Colorado Department of Human Services, Health Care Policy and Financing, Colorado Department of Education, Colorado Department of Public Health and Environment and Colorado Department of Higher Education.

In 2017, the Commission was reauthorized in statute until 2023 to continue to align services and support outcomes for early childhood. We are grateful for the support of the Legislature and look forward to continuing to work with you to ensure all children have the services and supports they need to be healthy, valued and thriving.

Sincerely,



Lt. Governor Donna Lynne
ECLC Co-Chair



Anna Jo Haynes
ECLC Co-Chair



Barbara Grogan
ECLC Co-Chair



About the Early Childhood Leadership Commission

The ECLC was originally established in 2010 and authorized in 2013 for five years through HB 13-1117. The composition of the Commission is twenty individuals representing a full spectrum of early childhood champions, advocates and leaders. It includes parents, early childhood professionals, Head Start, school districts, local municipalities, foundations, nonprofits, businesses and five state departments: Education, Health Care Policy and Financing, Higher Education, Human Services and Public Health and Environment. As Colorado's state advisory council for early childhood, the role of the Commission is to be a statewide leader, subject matter expert and advocate for best and promising practices throughout the state.

THE ECLC IS STATUTORILY CHARGED TO:

- Assist and monitor efforts to enhance alignment across programs and agencies that support young children and their families, which includes collaboration among five state departments.
- Advise and make recommendations to policy makers and the Office of Early Childhood, CDHS.
- Develop strategies and monitor efforts to increase the access, quality and equity of services and supports on behalf of pregnant women and children birth through age eight.



2017 ECLC Accomplishments:

- Worked with more than **100 partners** including businesses, nonprofits, advocacy organizations, early childhood councils, government agencies and philanthropic partners to align and strengthen Colorado's early childhood systems on behalf of **pregnant women, children birth to eight and their families**
- Continued stakeholder engagement and development of an **Early Childhood Colorado Framework** online website that will be used by early childhood professionals to share and align their work, providing Colorado with a tool to better understand how the state is making progress toward the outcomes in the *Framework*
- Endorsed the **Early Childhood Workforce 2020 Plan** - Colorado's new early childhood professional development plan, hosted a cross-agency forum on early childhood workforce issues, and re-seated the Early Childhood Professional Development Advisory Working Group to lead the implementation of the Plan's goals and strategies
- Advised the Office of Early Childhood, CDHS on future opportunities for quality investments and implementation and evaluation of **Colorado Shines**, Colorado's Quality Rating & Improvement System
- Developed a **Data Vision statement** to assist the Commission and its subcommittees and working groups in thoughtfully and responsibly using data to guide and inform early childhood decision-makers
- Staffed the **Early Childhood & School Readiness Legislative Commission** on best and promising practices related to early childhood policy as outlined in HB 13-1007, which led to the introduction of four early childhood bills in the 2018 Legislative Session
- Served as the **state advisory council** by advising on federal grant applications related to pregnant women and children birth through age eight and submitting letters of support required to apply for those grants
- Advised and supported the **Young Child Wellness Council** to guide implementation of Colorado Project LAUNCH, a federally funded children's mental health initiative, and the expansion to four additional Colorado communities implementing LAUNCH strategies with local philanthropic funding
- Reviewed and made recommendations to the Office of Early Childhood, CDHS on the **Child Care Development Block Grant State Plan**

Our Strategies

In collaboration with our partners, we use the following **STRATEGIES FOR ACTION** to help guide all of our work across early childhood systems in Colorado:



Connect and Empower Families



Make Data Informed Decisions



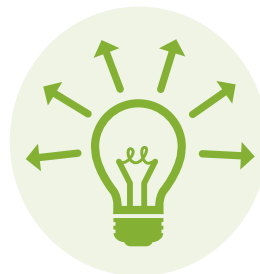
Encourage Public Private Partnerships



Build Capacity and Sustainable Business Practices



Pursue Quality and Consumer Affordability



Promote and Share Knowledge



Develop and Retain the Workforce

Colorado Early Learning & Development Guidelines

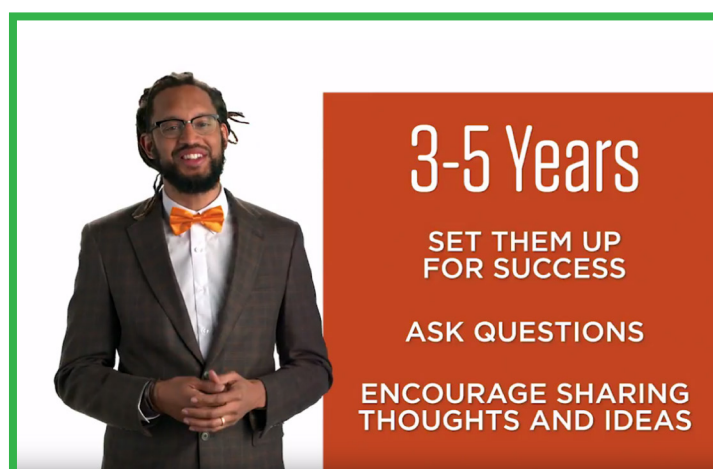
In June 2017, the Office of Early Childhood released the [Colorado Early Learning & Development Guidelines](#) (Guidelines) video series. The videos describe a child's learning and development from birth to 8 years old and provide practical tips and fun ideas that anyone can use to give their child a strong, healthy start. The 60 videos, in English and Spanish, have been viewed more than 7,700 times as of December 2017.

“As a mother of three, I can attest that parenting is both incredibly rewarding and at times, a daunting challenge. But supporting our children’s healthy development starts by just getting involved. The new video series proves that getting involved is as simple as using the tools we already have to build strong, supportive relationships with our children so they feel safe and secure to learn and explore the world around them.”

-Donna Lynne, Colorado Lieutenant Governor and ECLC Co-Chair

In addition to the videos, parents and caregivers, early childhood professionals, and children’s advocates can access the Guidelines manual, one-page tip sheets, and EarlyLearningCO.org which features additional programs and resources for families requiring extra support. The website also allows anyone using the Guidelines to share their story, providing real-life examples for other caregivers curious about incorporating tips from the Guidelines into their interactions with young children.

The Early Childhood Leadership Commission (ECLC) led a collaborative process in 2011-2013 that brought together professionals, researchers, state agencies and other early childhood stakeholders to formulate the Guidelines and ensure alignment with other state and federal standards. In addition to supporting increased knowledge of early childhood development, the Guidelines inform classroom activities; shape developmental support, instruction, assessment and interventions; and provide unifying standards that are embedded in programs and services across the comprehensive early childhood service delivery system. The ECLC will lead the process to review the Guidelines and finalize changes by 2020.



Highlights from the ECLC Subcommittees

PROGRAM QUALITY AND ALIGNMENT SUBCOMMITTEE

The ECLC believes that the coordination and alignment of early childhood programs is critical to increasing access, quality and equity to services and supports for pregnant mothers and their children birth through age eight. As such, the Program Quality and Alignment Subcommittee identifies opportunities for, and barriers to, the alignment of standards, rules, policies and procedures across early childhood systems throughout Colorado. This emphasis on alignment continues to guide the Commission's work to ensure efficient and effective service delivery across the three domains of the *Early Childhood Colorado Framework* - Learning & Development, Health & Well-Being, and Family Support & Education.

The Program Quality and Alignment Subcommittee oversees several Working Groups:

- The **Young Child Wellness Council** focuses on ensuring all children entering school have the social, emotional, cognitive and physical skills they need to succeed. The group welcomed representatives from four new communities that are part of an innovative public/private partnership to implement LAUNCH (Linking Actions for Unmet Needs in Children's Health) strategies throughout the state. The group has three new co-chairs, and has worked hard to welcome parents and caregivers to share their expertise and lead the Council forward.
- **Colorado Shines Pathways for Public Schools Working Group** was charged with streamlining opportunities for public schools to qualify for higher ratings in Colorado Shines, Colorado's quality rating system. They completed pilots for this work in 2017, resulting in Denver Public Schools and Boulder Valley Public School District each earning a Level 4. The school district application has been finalized and now posted on the Colorado Shines website. All districts have received information on accessing the application.
- **The Framework Working Group** is leading the development of a web-based, interactive tool that will allow organizations to share programs and best practices and align their work under the domains and outcomes of the *Framework* (see **Outcomes: Access, Quality and Equity**). The website will be ready for

- programs and organizations to use in early 2018.
- Following the great successes achieved in the first early childhood workforce plan, the **Early Childhood Professional Development (ECPD) Advisory Working Group** worked with stakeholders across the state to develop our new state plan: Colorado's Early Childhood Workforce 2020 Plan. This plan, which was endorsed by the Commission in June, 2017, focuses on retention, recruitment and compensation for early childhood professionals and outlines specific strategies and objectives to elevate this workforce. The ECPD Advisory will guide the implementation of this innovative and ambitious plan over the next several years.

Toward the end of 2017, the Program Quality and Alignment Subcommittee members reviewed the successes and opportunities in aligning systems and services for children and families. The subcommittee prioritized these opportunities and will work to support and address these priority areas in 2018.

Future Priorities

In 2018, the Program Quality and Alignment Subcommittee commits to:

- Working across sectors and state agencies to oversee the implementation of the EC Workforce 2020 Plan;
- Continuing to support all of the LAUNCH communities in Colorado participating in Project LAUNCH to ensure all children entering school have the social, emotional, cognitive and physical skills to succeed; and
- Completing and promoting the web-based, interactive *Early Childhood Colorado Framework* tool to allow the alignment of early childhood services and supports across Colorado.

Outcomes: Access, Quality and Equity

Our work leads to improved access, quality and equity across three domains of Family Support & Education, Learning & Development, and Health & Well-Being.



ACCESS

- Family engagement and leadership opportunities exist within programs, schools and communities
- Services and supports promote the well-being and resiliency of parents and caregivers
- Family friendly policies and practices exist in the workplace
- Comprehensive health coverage and services are consistently utilized by pregnant women and children
- Integrated and preventive maternal and child physical, behavioral and oral health services are available
- All settings promote mental health and well-being through early identification, consultation and treatment
- Education, coaching and ongoing training exist for caregivers, teachers and other professionals
- Learning experiences and environments are high quality, developmentally appropriate and affordable

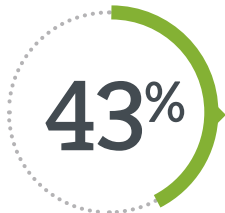
QUALITY

- Family knowledge and capacity support children's healthy development and learning
- Families advocate for high quality comprehensive services and supports that lead to future success
- All health care providers, including mental health, deliver coordinated, family focused care
- Settings and practices promote strong relationships, social and emotional development, appropriate nutrition and physical activity
- Formal and informal care environments and education practices reach the highest levels of quality
- Adults understand and support children's learning and development, including social and emotional
- All settings provide effective transitions across and within programs, schools and systems

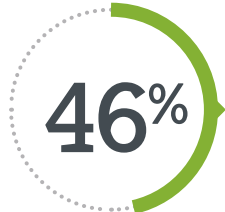
EQUITY

- Education, employment, housing, financial and legal supports contribute to family economic security
- Families, including those with high needs, experience timely and coordinated services and supports
- Families have the ability to plan the number and timing of their children
- All environments are safe, free of toxins, have affordable foods and offer physical activity
- Children with special health, behavioral or developmental needs receive individualized services and supports
- All children are ready for school and achieving by 3rd grade regardless of ability, race, place, income, language and culture
- Children, including those with high needs, receive timely, comprehensive and affordable academic services and transition supports

Elevating the Early Childhood Workforce is a Priority for Colorado



With a growing economy, Colorado estimates the increase in the need for preschool teachers to be approximately 43% in the next eight years



Nationally, approximately 46% of child care teachers qualify for public assistance, including food stamps, Medicaid, and child care assistance



A recent survey in Colorado found that 70% of directors are struggling to find qualified staff

In 2014, Colorado's early care and education sector generated nearly \$640 million in revenue

\$640M



Transforming the Early Childhood Workforce in Colorado

Research shows that early childhood educators are paramount to children’s positive early learning and development. Unfortunately, most communities in Colorado lack access to an effective, consistent workforce that families can trust and with whom young children can thrive.

Through an innovative partnership, organizations in Colorado came together to RESEARCH, PLAN and EXPLORE opportunities and challenges in supporting a qualified, educated early childhood workforce.

This effort, called Transforming the Early Childhood Workforce in Colorado, is a public-private partnership designed to increase recruitment, retention, compensation, and the development of the early childhood workforce. Partners include Early Milestones Colorado, the Colorado Departments of Education and Human Services, Buell Foundation, and Gary Community Investments.

Through this work, stakeholders came together and developed a new state plan, the [Early Childhood Workforce 2020 Plan](#). This plan was endorsed by the Commission in June 2017 and includes goals related to the following topics:



The initiative also included an economic impact study, [Bearing the Cost of Early Care and Education in Colorado: An Economic Analysis](#), and a statewide survey that identified strengths, gaps and unmet needs among current early childhood professionals, [Colorado Early Childhood Workforce Survey 2017](#).

In late 2017, the ECLC seated a new Early Childhood Professional Development Advisory Working Group to lead the implementation of the Early Childhood Workforce 2020 Plan and coordinate efforts with others who are working to develop strategies and solutions that support the workforce. In addition, the ECLC hosted a state agency forum in which seven state departments learned about the workforce challenges and developed strategies to support this industry.

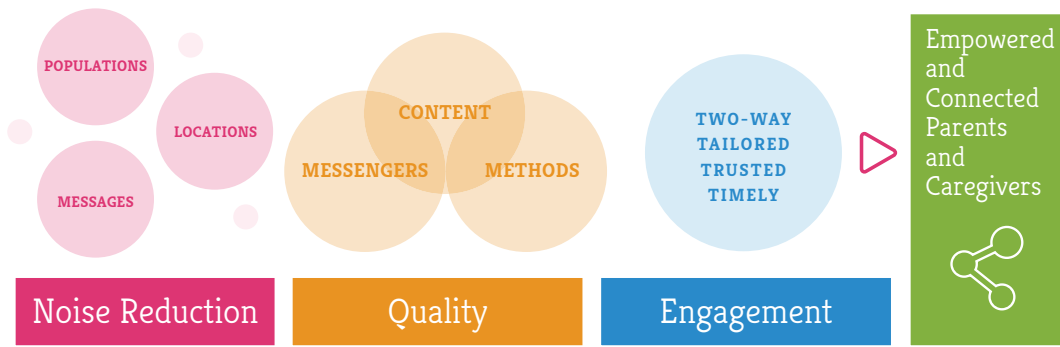
We look forward to continuing to work with partners across the state to elevate and support Colorado’s early childhood workforce.

COMMUNICATIONS SUBCOMMITTEE

Parents and caregivers are a young child's first and most important teachers. Interactions between children and these adults lay the foundation for a host of developmental outcomes including cognitive, social-emotional and physical health. Ensuring parents and caregivers are aware of their important roles and have the tools they need to support a child's development is critical for Colorado's future.

In 2015-16, the ECLC established the Early Childhood Communication Collaborative to identify and coordinate existing and emerging parent and caregiver awareness and engagement efforts in Colorado. This effort included a survey of communication efforts aimed at reaching parents and caregivers with information or resources regarding early childhood, and focus groups of parents and caregivers in communities across Colorado. This work found that despite the vast array of communications efforts that reach every county in the state, parents and caregivers indicate they do not have the resources and supports they need at the times they need them.

From this research, three main focus areas of recommendations were developed:



Following the completion of this work, the Commission paused to learn more about the communication efforts happening and convened a group to help identify where the ECLC should focus its efforts to move these three recommendations forward.

The ECLC strongly believes that in order to advance this work and make an impact on parent and caregiver awareness and engagement efforts, the Commission must continue to engage in a public/private partnership that includes businesses, state and local government, foundations, direct service providers, and most importantly, the parents and caregivers. The new Communications Subcommittee will begin meeting in 2018 and develop action steps to support awareness of the importance of early childhood health and development.

Future Priorities

In 2018, the Communications Subcommittee will:

- Meet with stakeholders to develop strategies that promote the recommendations for effective communication with parents and caregivers throughout Colorado;
- Create a mechanism to promote the continued sharing of tools, resources and strategies to improve the coordination of communication efforts within Colorado; and
- Encourage all who connect with new parents to incorporate parent and caregiver engagement strategies and messages into their programs and outreach.

DATA SUBCOMMITTEE

The ECLC strongly believes in the consistent and responsible use of relevant, reliable and secure data to better understand populations across the state, identify opportunities to create efficiencies within programs and across departments, and encourage sufficient public and private investments in the early childhood system. The Data Subcommittee encourages use of appropriately collected data analyzed in aggregate with proper confidentiality safeguards. When made available, data informs strategic planning and evaluation by early childhood partners working in a variety of capacities and settings.

Since 2013, the ECLC has supported state agencies in building the infrastructure and data systems necessary to support the development and sustainability of early childhood programs, services and supports for families.

Two successful examples of early childhood data systems in Colorado are:

- The Professional Development Information System (PDIS) - a learning management system that has 43,762 registered users who have taken more than 230,000 courses in early childhood care and development; and
- Colorado Shines, the state's Quality Rating & Improvement System (QRIS) - a reliable, consistent, statewide rating system that evaluates how licensed child care organizations support children's health, safety and development.

The ECLC will continue to support appropriate use of data to evaluate the success of Colorado's efforts to promote quality programs that ultimately lead to better outcomes for children.

In 2017, the Data Subcommittee developed a Data Vision statement for the ECLC and all of its subcommittees and working groups to incorporate effective and responsible use of data as an essential component in all early childhood conversations and decisions. The subcommittee is also working with the Colorado Office of Information Technology to determine how to make early childhood data and resources available and accessible, while ensuring accuracy and privacy for children and families.



Future Priorities

In 2018 the Data Committee plans to address the following:

- Collect and disperse trusted, publicly available early childhood data resources and reports on the *Early Childhood Colorado Framework* website;
- Support opportunities to educate and encourage stakeholders on understanding, interpreting, and using data when making decisions across all levels of early childhood practice;
- Work with state agencies to encourage communication and alignment of collected data and outcomes; and
- Advocate for the importance of kindergarten readiness assessments as a way to support children's school success.

The ECLC Partners with State Agencies to Support Young Children and Their Families

- To build on the success of the infrastructure and partnerships established through the Race to the Top-Early Learning Challenge Fund and to further advance preschool to third grade approaches across the state, the **Colorado Department of Education (CDE)** is establishing a new Preschool to 3rd Grade Office. The new office brings together the Office of Literacy, the

Shines Quality Rating and Improvement System.

- Increasing the number of available pre-service and in-service professional learning opportunities aligned to the Colorado Competencies for Early Childhood Educators and Administrators.
- Increasing the number of early childhood professionals who hold an Early Childhood



Office of Early Learning and School Readiness and the Preschool Special Education team to better coordinate the department's expertise in best instructional practice, effective professional learning, data driven decision making, early childhood development, the specific needs of children with disabilities and the science of reading development. Through more streamlined and seamless support across the preschool to third grade continuum, the new office will focus on the following targets:

- Increasing the number of students reading at grade level by 3rd grade.
- Increasing the percentage of school district preschool programs rated through the Colorado

Professional Credential, Trainer Credential and/or Coaching Credential.

- Partnering across CDE Offices and Units to support school districts with implementation of an Early Learning Needs Assessment in the unified improvement planning process.
- Partnering with the Early Childhood Leadership Commission and the Early Childhood Professional Development Advisory working group to implement the Colorado Early Childhood Workforce 2020 Plan.
- In 2016, one of the "Wildly Important Goals" of the **Colorado Department of Human Services (CDHS)**

was to ensure high quality facilities rated Levels 3-5 in Colorado Shines that accept Colorado Child Care Assistance Program (CCCAP) funds are available in communities throughout the state. The department increased the number of communities with at least one high quality early care and learning facility that accept CCCAP from 25.8% in June 2016 to 34.4% in June 2017. As a result of the department's work, more communities have access to high quality care facilities accepting CCCAP than ever before.

The Office of Early Childhood implemented Working Together, a two generation program, in the San Luis Valley in January 2016. The result of a \$950,000 federal Maternal, Infant, and Early Childhood Home Visiting (MIECHV) Innovation Grant, Working Together integrates evidence-based home visiting services with comprehensive family supports to increase families' self-sufficiency. Through the grant, families participating in home visiting programs are able to complete and advance their education, participate in job training, increase their financial literacy, and enter the workforce – all while accessing high quality child care for their young children.

- **The Colorado Department of Public Health and Environment (CDPHE)** continued its public awareness campaign (<http://www.postpartum.net/colorado>) to improve the awareness and knowledge of pregnancy-related depression and anxiety among pregnant and postpartum women and their informal support networks, with the goal of increasing the number of women who seek treatment. Since the campaign launched in October 2016, there have been more than 12 million paid impressions to Colorado residents, and the campaign landing page has been viewed 47,508 times. The Spanish language version of the campaign will launch in early 2018.

The Colorado Baby-Friendly Hospital Collaborative successfully facilitated an additional six hospitals to achieve Baby-Friendly designation, bringing the state to 12 certified hospitals representing over 28% of live births in Colorado. The Department collaborated with the Department of Health Care Policy and Financing to add a Breastfeeding Practices measure to the state's Hospital Quality Incentive Payment program. Hospitals

that select this measure receive additional funds based on performance.

The Department completed its second year promoting healthy weight Colorado consumer –tested messaging, 9 Ways to Grow Healthy Colorado Kids, as a means to make certain child care, health care and public health providers and communities all give the same information to empower families to take action. Over 300 organizations statewide ordered messaging materials.

The Colorado Child Fatality Prevention System in partnership with the Colorado Essentials for Childhood project is engaging the 43 local child fatality prevention review teams covering all 64 counties in Colorado to implement child abuse and neglect prevention strategies at the local level, including promoting family-friendly employment practices and policies; improving the social emotional health and wellness of caregivers and children; increasing access to quality, affordable child care; and expanding access to free, full day preschool and kindergarten.

- **The Department of Health Care Policy and Financing (HCPF)** administers health insurance programs for Coloradans that qualify for Health First Colorado (Colorado's Medicaid Program) and the Child Health Plan Plus (CHP+). As of October 31, 2017, Health First Colorado covered 580,575 children, making up 44% of the caseload. Approximately 44% of all births in Colorado are to moms on Health First Colorado and CHP+ . The majority of Health First Colorado members are enrolled in the Accountable Care Collaborative program (ACC). The ACC is designed to provide a person-centered approach to care. It connects members to medical and community resources, minimizing barriers to access. The goal is better health outcomes at lower costs. In addition, prenatal care rates for members in the Accountable Care Collaborative have increased 23.6% over the past five years. In October 2017, CHP+ served 75,671 kids and pregnant mothers. The Department continues to focus on improving health and encouraging prevention; last year the percentage of kids in CHP+ seeing a dentist increased.

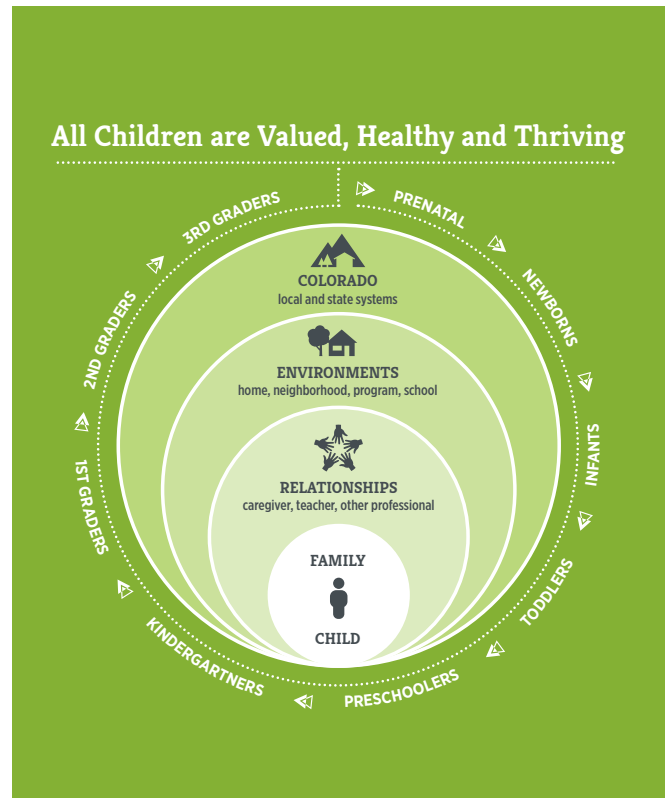
Benefits of a Comprehensive Early Childhood Approach

Children are impacted by the world around them from the moment they are born; therefore it is vital that early childhood professionals focus on supporting and aligning services across all realms in a child's life.

With the child and family at the center of this work, the Commission has a unique role to support, guide and advocate for practices and policies across all levels or “spheres of influence.”

State agencies supporting early childhood have aligned policies and practice to work across departments for the betterment of children and families in Colorado. Two projects that exhibit this remarkable coordination include:

- In response to HB17-1003 *Concerning a Strategic Action Plan to Address Teacher Shortages in Colorado*, CDHE and CDE led a stakeholder engagement process to develop a report and strategic plan to **improve educator retention, increase teacher compensation and benefits, attract talent to high-need areas and produce more graduates from educator preparation programs**. Early childhood educators were included as a high-demand area in this work and recommendations included supports for early childhood professionals.
- In December 2017, the Early Childhood Leadership Commission hosted an Early Childhood Workforce Forum, in which seven state agencies met to discuss the early care and education industry in the state. **This work resulted in cross-agency strategies to support and elevate the early childhood workforce.**



Looking Forward

Colorado has made significant strides in the quality, access, and equity in early childhood supports and services across the *Early Childhood Colorado Framework (Framework)* domains of Family Support and Education, Health and Well-being, and Learning and Development. As Colorado transitions to new state leadership, the Commission will work with stakeholders to summarize and prioritize a set of opportunities, policies and investments that the collective early childhood community can use to advance efforts to ensure that all children across Colorado are healthy, valued and thriving.

We are grateful to all of the 100+ organizations we work with in Colorado for your dedication, your innovation, and your contributions to this important work.

2017 Early Childhood Leadership Commission

Co-Chairs

Barbara Grogan, Retired Founder and CEO – Western Industrial Contractors

Anna Jo Haynes, President Emeritus – Mile High Early Learning Centers

Donna Lynne, Lieutenant Governor – State of Colorado

2016-17 Commissioners

Letty Bass, Executive Director – Merle Chambers Fund

Charlotte Brantley, President/CEO – Clayton Early Learning

Doug Clements, Executive Director – Marsico Institute for Early Learning and Literacy

Melissa Colman, Associate Commissioner of Student Learning – Department of Education

Heather Craiglow, Head Start Collaboration Director - Department of Human Services

Gerri Gomez Howard, Principal – Gomez Howard Group

Elsa Holguín, Senior Program Officer – Rose Community Foundation

Julie Krow, Deputy Executive Director For Community Partnerships –
Department of Human Services

Jeff Kuhr, Executive Director – Mesa County Health Department

Tom Massey, Deputy Executive Director – Department of Health Care Policy & Financing

Jeanne McQueeney, Commissioner – Eagle County

Lydia Prado, Vice President of Child and Family Services – Mental Health Center of Denver

Anna Robinson, Parent Representative

Cindy Schulz, Executive Director – Cydney and Tom Marsico Family Foundation

Susan Steele, Executive Director – Buell Foundation

Karen Trierweiler, Deputy Director of the Prevention Services Division – Department of
Public Health and Environment

George Welsh, Superintendent – Cañon City Schools

Mary Anne Snyder, Director – Office of Early Childhood, Department of Human Services,
Ex-Officio Member

New Commissioners in 2017

Jerene Petersen, Deputy Executive Director For Community Partnerships –Department of
Human Services

Erin Ulric, Deputy Director of the Prevention Services Division – Department of Public
Health and Environment

Staff

Kristina Heyl, Director

Dalia Milford, Program Assistant II

The ECLC Extends our Sincere Appreciation to our Co-Chairs...

ECLC Co-Chairs

Lt. Governor Donna Lynne
Barbara Grogan
Anna Jo Haynes

Subcommittee and Working Group Co-Chairs

Letty Bass	Barbara Grogan	Nancie Linville
Charlotte Brantley	Pamela Harris	Princess Mack
Ann Bruce	Katrina Haselgren	Tom Massey
Katherine Casillas	Anna Jo Haynes	Phuonglan Nguyen
Melissa Colzman	Elsa Holguín	Susan Steele
Heather Craiglow	Rebecca Kantor	

...And to those who work to ensure all children in Colorado are healthy, valued and thriving.



ECLC Annual Report Acronym Guide

ACC: Accountable Care Collaborative

CCCAP: Colorado Child Care Assistance Program

CDE: Colorado Department of Education

CDHE: Colorado Department of Higher Education

CDHS: Colorado Department of Human Services

CDPHE: Colorado Department of Public Health and Environment

CHP+: Child Health Plan *Plus*

ECLC: Early Childhood Leadership Commission

ECPD Advisory: Early Childhood Professional Development Advisory Working Group

HCPF: Health Care Policy and Financing

LAUNCH: Linking Actions for Unmet Needs in Children's Health

MIECHV: Maternal, Infant, and Early Childhood Home Visiting

OEC: Office of Early Childhood

PDIS: Professional Development Information System

PQA: Program Quality and Alignment Subcommittee

QRIS: Quality Rating and Improvement System

Thank you to Clayton Early Learning and the Office of Early Childhood, CDHS for donating the photography used in this report!

Sources

Colorado Department of Labor and Employment, 2016 Colorado Talent Pipeline Report; Retrieved from <https://www.colorado.gov/pacific/cwdc/colorado-talent-pipeline-report>.

Colorado's Competencies for Early Childhood Educators and Administrators, Version 6.29.16

Early Childhood Leadership Commission. 2016. Early Childhood Communication Efforts in Colorado. <http://www.earlychildhoodcolorado.org/early-childhood-communication-collaborative/>.

First Five Years Fund. 2016. More State and Federal Investments in Early Childhood Education is a Top Priority for Colorado Voters [Fact Sheet]. ffyf.org/2016-colorado-poll/.

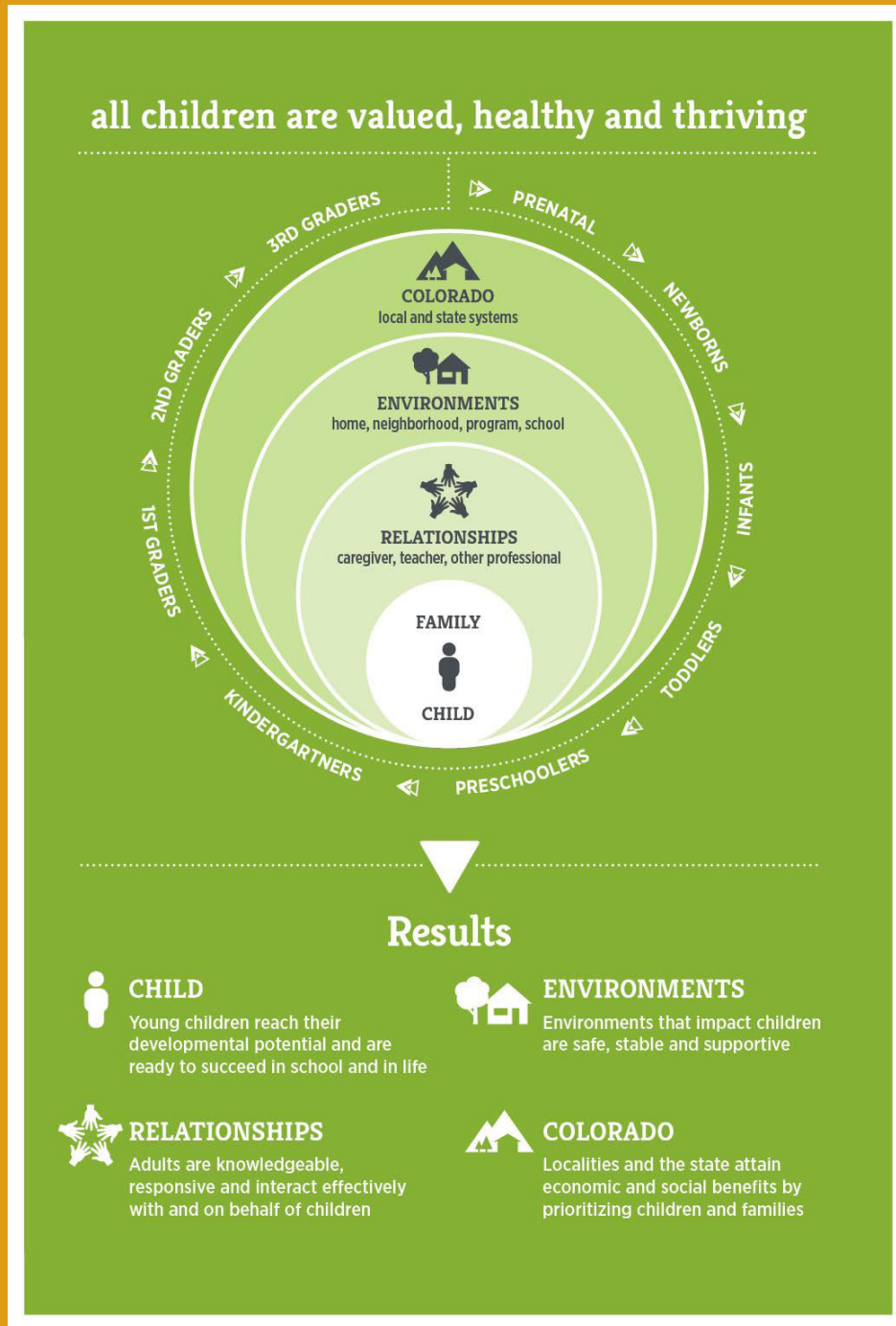
Franko, M., Brodsky, A., Wacker, A., & Estrada, M. (2017). Bearing the cost of early care and education in Colorado: An economic analysis. Denver: Butler Institute for Families, Graduate School of Social Work, University of Denver.

Institute of Medicine and National Research Council. 2015. Transforming the Workforce for Children Birth Through Age 8: A Unifying Foundation. Washington, DC: The National Academies Press. doi: 10.17226/19401.

Schaack, D. & Le, V. (2017). Colorado Early Childhood Workforce Survey 2017 Final Report. Denver, Colorado: University of Colorado Denver.

Whitebook, M., McLean, C., and Austin, L.J.E. (2016). *Early childhood workforce index - 2016*. Berkeley, CA: Center for the Study of Child Care Employment, University of California, Berkeley. Retrieved from <http://csce.berkeley.edu/files/2016/Early-Childhood-Workforce-Index-2016.pdf>.

Early Childhood Colorado Framework



ECLC

Early Childhood Leadership Commission

For questions relating to the ECLC, please visit www.earlychildhoodcolorado.org