

GOV 25.12/1945

1948

C.2

# COLORADO

COLORADO STATE PUBLICATIONS LIBRARY



3 1799 00175 7491

DENVER PUBLIC LIBRARY  
DOCUMENTS DEPARTMENT

# TOP OF THE NATION



# THIS PHOTOGRAPHIC ESSAY

on the Colorado Scene is dedicated  
to the millions of Americans who  
have been our guests in war and in  
peace and with whom we are proud to  
share the varied enchantments of  
**THE NATION'S TOP STATE**

THE PEOPLE OF THE STATE OF COLORADO

---

#### Publisher

State of Colorado  
Department of Advertising & Publicity  
224 State Capitol Building  
Denver 2, Colorado  
Lewis R. Cobb, Director

#### Photographic Credits

Denver & Rio Grande Western Railroad  
United States Forest Service  
Otto Roach  
Rocky Mountain News  
D. L. Hopwood  
J. M. F. DuBois  
Edward Lane  
Rocky Mountain Photo  
Frank Bradley  
Stanger Photoshop



# THE COLORADO DESIGN

---

THE dinosaur has left his giant spoor upon the rocks of Colorado. Time was when crocodiles were native here. The earth once thundered to the mammoth's tread. Then came the forms we know today; bison, antelope, deer, elk, old Moccasin Joe.

Man came quite late—some twenty thousand years ago, and left upon our eastern plains a few chipped points to tantalize the experts. These were the Yuma and the Folsom men. Eighteen millenniums passed; then, around the time of Caesar, the Basket Makers appeared on the southwest mesa lands. As the centuries passed, their primitive pit dwellings were succeeded by pueblos and then by the cliff-dwellings of Mesa Verde. By the time the Cliff-Dwellers had vanished, the nomadic tribes of history had appeared upon the plains.



The first white men to enter the region were the Spanish explorers who gave to almost every mountain and stream in southern Colorado the name it bears today. Our heritage from the French fur traders is almost negligible. Organized exploration had to await the coming of the Americans: Pike, Long, Fremont, and Gunnison. In their wake came the Mountain Men: Bridger, Baker, Wootton, Carson, the Bents—the real trail-blazers of Colorado. The first settlements were made in the San Luis Valley in the 1850s by Spanish-Americans from Mexico.



The discovery of gold near Denver in 1858 by the Russell party resulted in the first Anglo-American settlements. The strikes of Gregory and Jackson brought legions of Argonauts across the plains—miners, merchants, land-promoters, and gamblers. On February 28, 1861, when houses of brick were replacing log cabins, Colorado Territory was created.

The Civil War era was a time that tried men's faith in the land. Then came the railroads in 1870, along with new methods for treating ore. Baronial ranches grew up around vast herds of longhorns. Settlers swarmed into the fertile valleys.



The Leadville strike of 1878 put silver production ahead of gold, and opened the era of great mining and railroad enterprises. As wealth poured into the banks, Colorado towns blossomed with colleges, opera houses, and brown-stone palaces.

Colorado rallied quickly from the national panic of 1893. The discovery of gold at Cripple Creek offset the drop in silver. Dry farming and irrigation extended the farm area. New crops, such as sugar beets, created new wealth. Wool production soared. Expansion of trade made Colorado the commercial emporium of the West; fine rail, bus, air facilities, good roads and the motor car made it the playground of the Nation.



# YEAR ROUND VACATION LAND

ARTISTS have tried, writers have strived—it's a challenge to describe in paint or in words the loveliness of the Color State of the West in every season.

Take spring, for instance. Spring, when the playful winds from the eastern prairies dance across the flaming Indian Paintbrush of the south to the lacy peach blossoms of the Western Slope. The mountain streams are rushing with recently melted snow from high peaks.

White primroses glisten on the prairies; Columbines, the state flower, bloom over all the upland country; tree cactus wear their flowers high in celebration.

Chasing clouds climb above the mountain's snowy peaks, revealing sunny valleys, white ranch houses, foothills of red earth showing green. In the 6,000 miles of trout streams and 2,000 lakes high in the timberline country, the hungry fish won't learn that the most tantalizing lures have strings attached.

Now for summer. The transition is from beauty to more beauty—to a season of warm, breezy, sunlit days and 2 blanket-nights. Up the slopes, Ponderosa and Long Needle Pines, Colorado Blue and Red Spruce, cedars, aspens, cottonwoods, and willows wave in mountain winds. These are the days for riding the trails, greeting the sunrise, and returning at sunset with a real Colorado appetite.

Summer is rodeo season—trick riding, Indian events, broncho and steer riding, calf roping, bull dogging. Who enjoys it more? The spectator or the rodeo actor? There's color in the clothes, in the animals, in the blue sky, in the tanned faces of the vacationists.

And the nights! Stars—why, there are more stars to be seen in Colorado than anywhere. At least, the clear skies reveal constellations that elsewhere must often hide their light under a bushel of smoke and fog.

After summer has held the stage with its pageantry of unexcelled pleasure, autumn dazzles its audience with flashing color.

Where to look first? A touch of frost sparkles the air with the tang of sage, of mint and wild grasses and makes the moon a glorious golden light. The aspens girdle the snow capped mountains with brilliant yellow.

Fat deer spike across the wilderness. Quacking ducks at the edge of the marshes tease and the hunt is on! Bright caps are bobbing in the forests as hunters tramp through the hills and valleys. An automobile comes down the road with a fine elk strapped across the front.

At the hunting ranches, incomparable cooks serve breakfasts of flapjacks and bacon—dinners of venison steaks and roasts and apple pie.

Winter comes slowly. Swift snows to mantle the mountain slopes are lightened by days of sparkling sunshine. The ski trails are open! Thirty-three ski centers, each having various types of runs for beginners, intermediates and experts, dot the state. All are easily reached, yet tucked away. They are convenient to good hotels or picturesque lodges, are deep in the Rockies where ski runs are measured in miles not feet.

Yes, the seasons challenge description. Each has its beauty: spring, its soft awakening; summer, its warm, exciting pleasures; fall, its vigor; winter, its tingling, snowy enchantment. Which do you choose?



# FAMOUS NATIONAL PARKS AND MONUMENTS OF COLORADO

COLORADO'S shining highways lead to the two National Parks and eight National Monuments in the state, in which are found diversified means of relaxation and entertainment in these last strongholds of Nature.

**Rocky Mountain National Park**—Most popular national park in the West is in north central Colorado less than two hours' drive from Denver. Within its 405 square miles is found a remarkable grouping of mountain scenery, gouged by glaciers and canyons, and dotted with hundreds of Alpine lakes. Rushing streams are well stocked with trout. Longs Peak, 14,255 altitude, dominates the scene and lures hardy mountain climbers. There are two entrances into the park—Estes Park Village from the east, and Grand Lake, with the highest yacht anchorage in the nation, from the west.

**Mesa Verde National Park**—Southwestern corner of the state, includes thousands of acres of canyons and mesa lands set aside for the preservation of its many ancient cliff dwellings and surface pueblos. Mesa Verde is itself a great mound of earth and rock about 15 miles long by 8 miles wide that rises abruptly from the floor of Montezuma Valley. The most spectacular dwellings are found along the walls of the deep canyons. Guide service can be arranged at Park headquarters.

**Dinosaur National Monument**, northwestern part of state, a fantastic land only partly explored as yet, with rich fossil beds of prehistoric animals of great scientific interest.

**Black Canyon of the Gunnison National Monument**, western slope of the state, includes 10 miles of the most impressive portion of the 50 mile gorge, deepest in Colorado. In some spots gorge walls rise 2,400 feet above narrow canyon floors 150 to 200 feet wide.

**Colorado National Monument**, on western border, is a dramatic drive in a region of beauty and interesting dinosaur beds filled with fossilized remains; an 18,000 acre park seamed with deep canyons, honeycombed with caves, and unusual rock formations.

**Hovenweep and Yucca House National Monuments**, near Mesa Verde, are perhaps of the same culture as the ruins at the national park.

**Great Sand Dunes National Monument**, near Alamosa, covers an area of 80 square miles along the western base of the Sangre de Cristo Range. Rising more than 1,500 feet, these changing mounds are large enough to cover all but the largest of cities and their highest buildings.

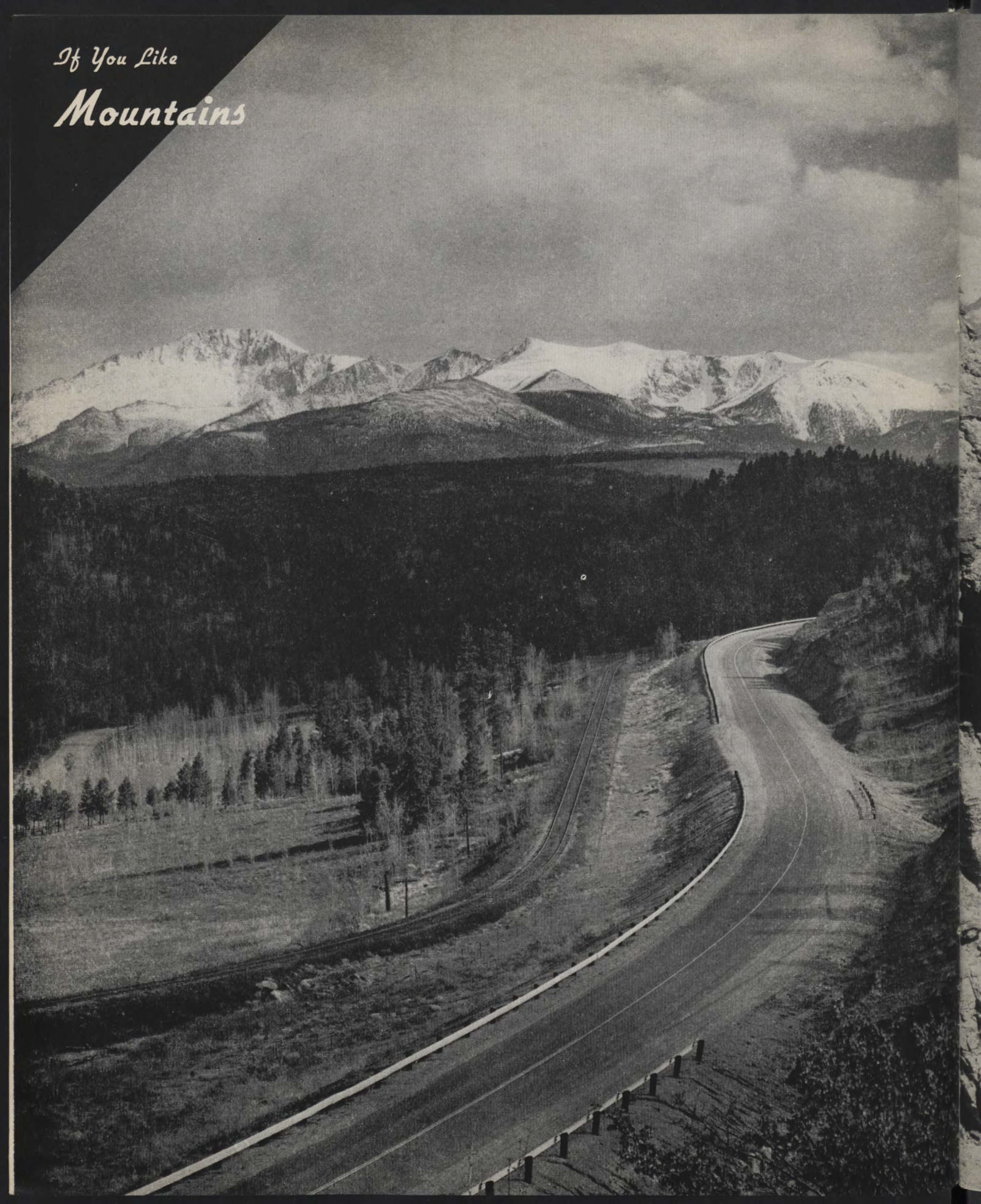
**Wheeler National Monument**—Near headwaters of the Rio Grande in southern part of Colorado is a rugged region of beautiful scenery. Vari-colored sandstone formations make it a bizarre land of western beauty.

**Mount of the Holy Cross National Monument** is visible from Highway U S 24, north of Leadville. The upright of the natural cross is 1,500 feet in length and arms extend 750 feet on each side. In spring ravines forming the cross are filled with snowdrifts 50 to 80 feet deep.

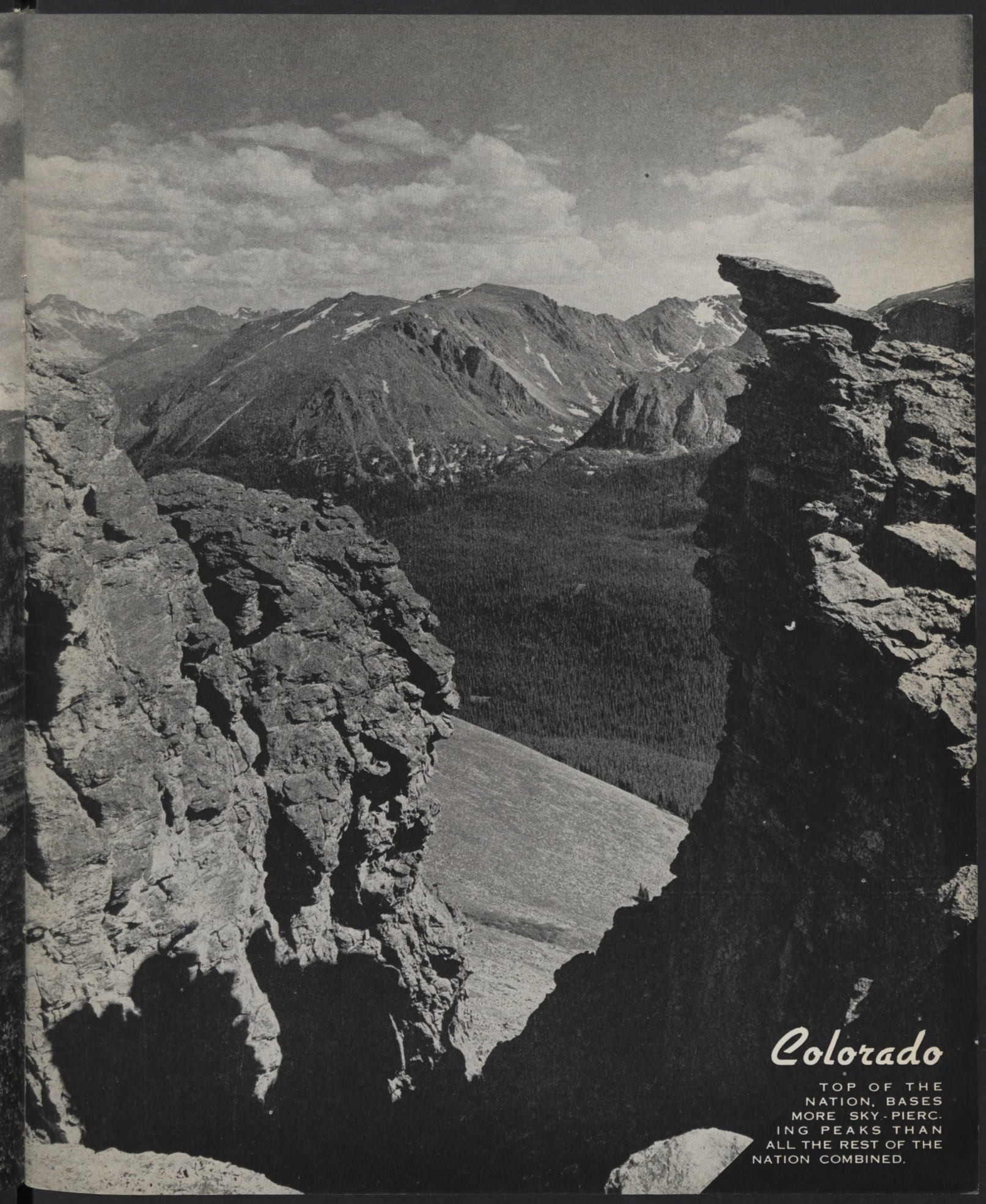
Colorado's Mountain Empire also includes 11 National Forests containing over 13,000,000 acres. These include much of Colorado's most beautiful mountain country. Each year millions of visitors from all over the world enjoy the National Forests for fishing, hunting, skiing, and myriad other vacation activities.



*If You Like*  
***Mountains***





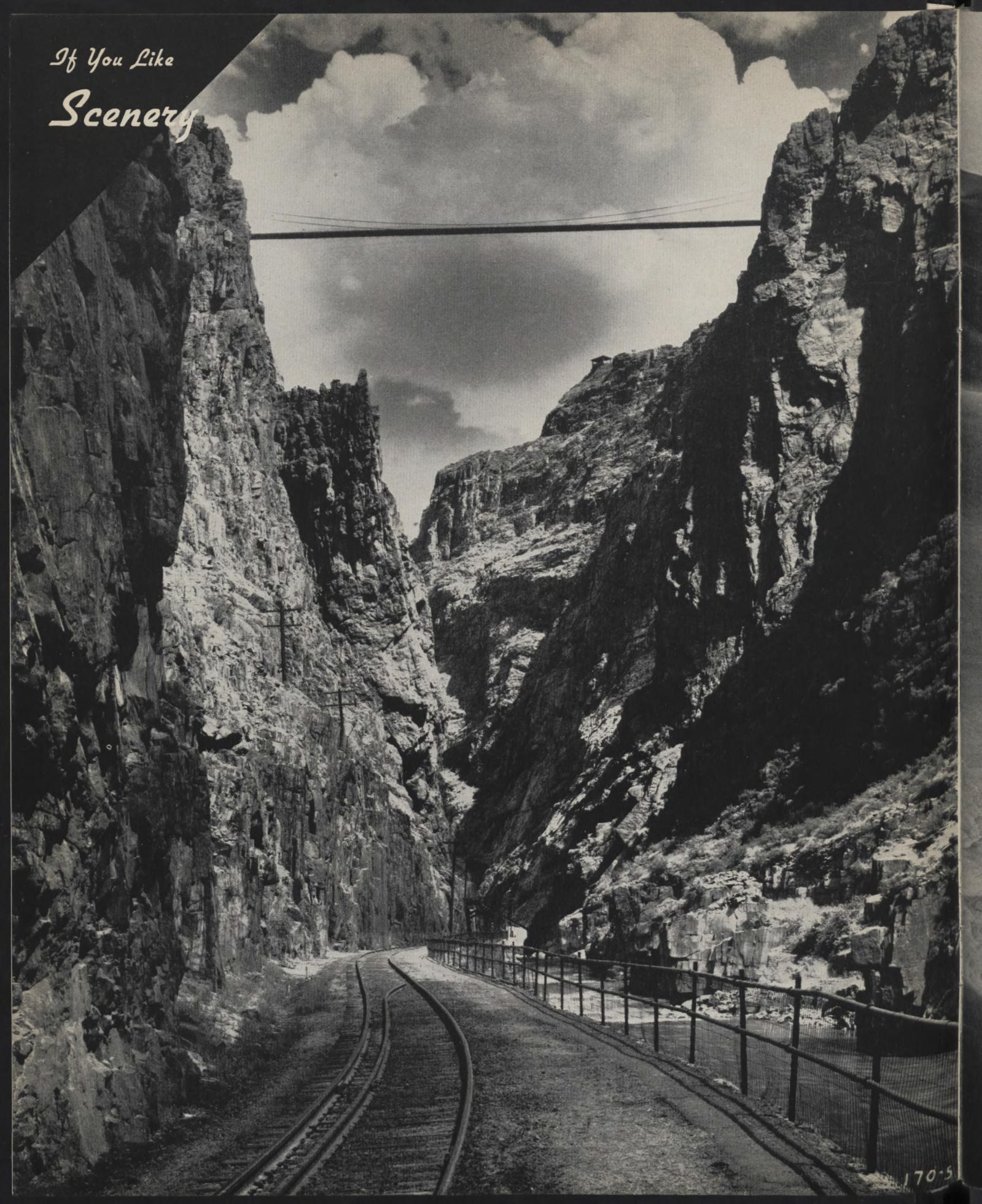


## *Colorado*

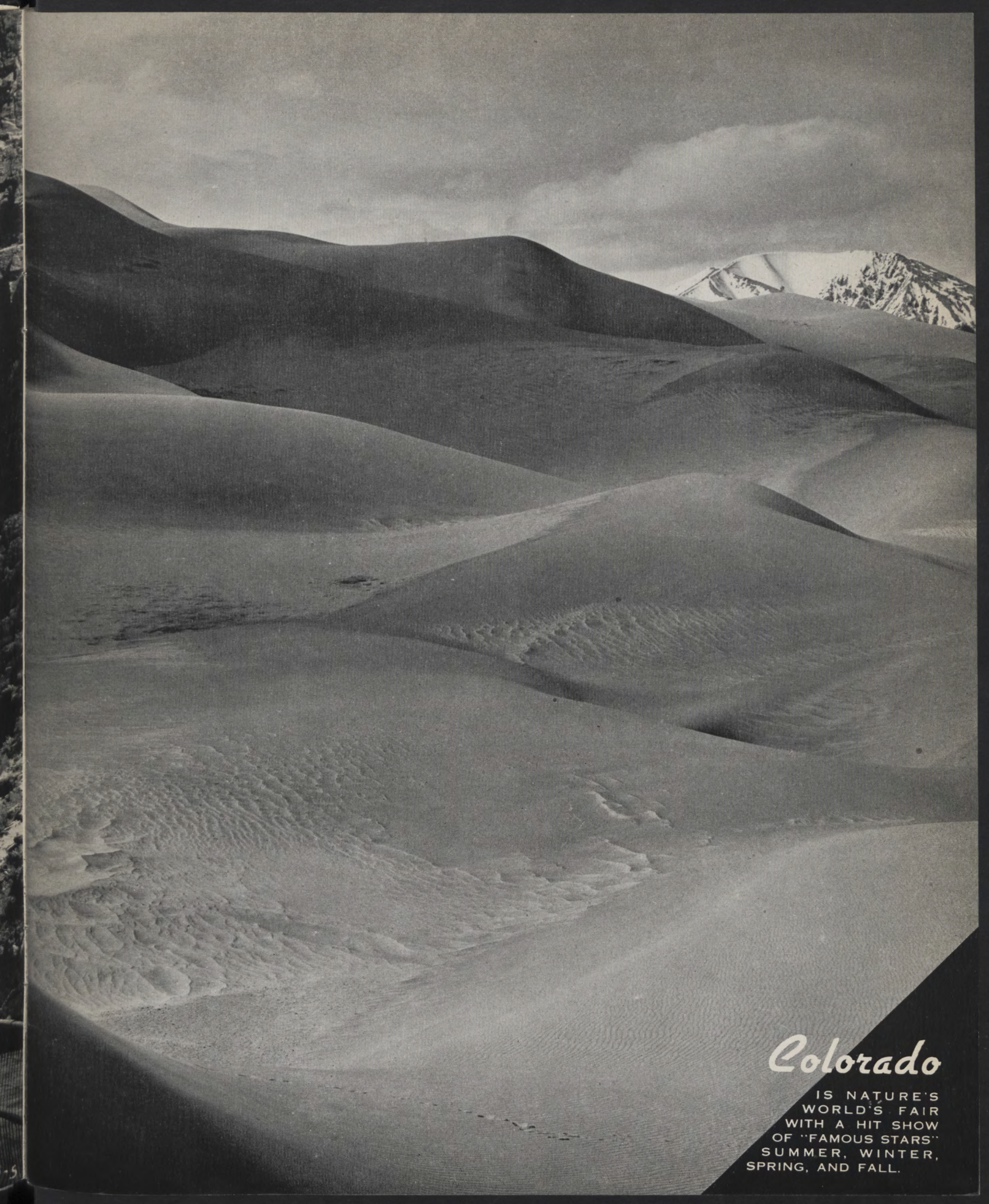
TOP OF THE  
NATION, BASES  
MORE SKY-PIERC-  
ING PEAKS THAN  
ALL THE REST OF THE  
NATION COMBINED.



*If You Like  
Scenery*





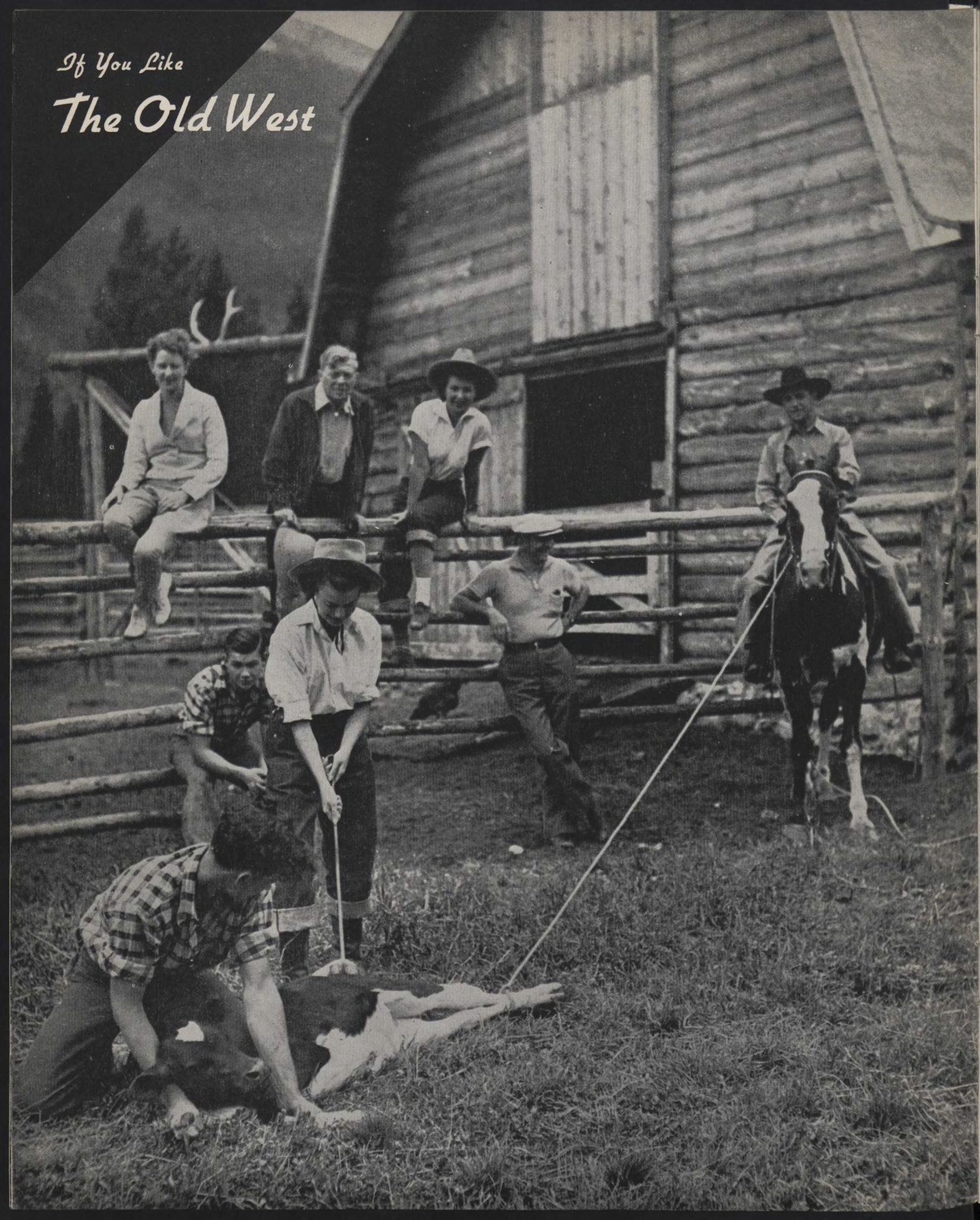


## *Colorado*

IS NATURE'S  
WORLD'S FAIR  
WITH A HIT SHOW  
OF "FAMOUS STARS"  
SUMMER, WINTER,  
SPRING, AND FALL.



*If You Like*  
*The Old West*







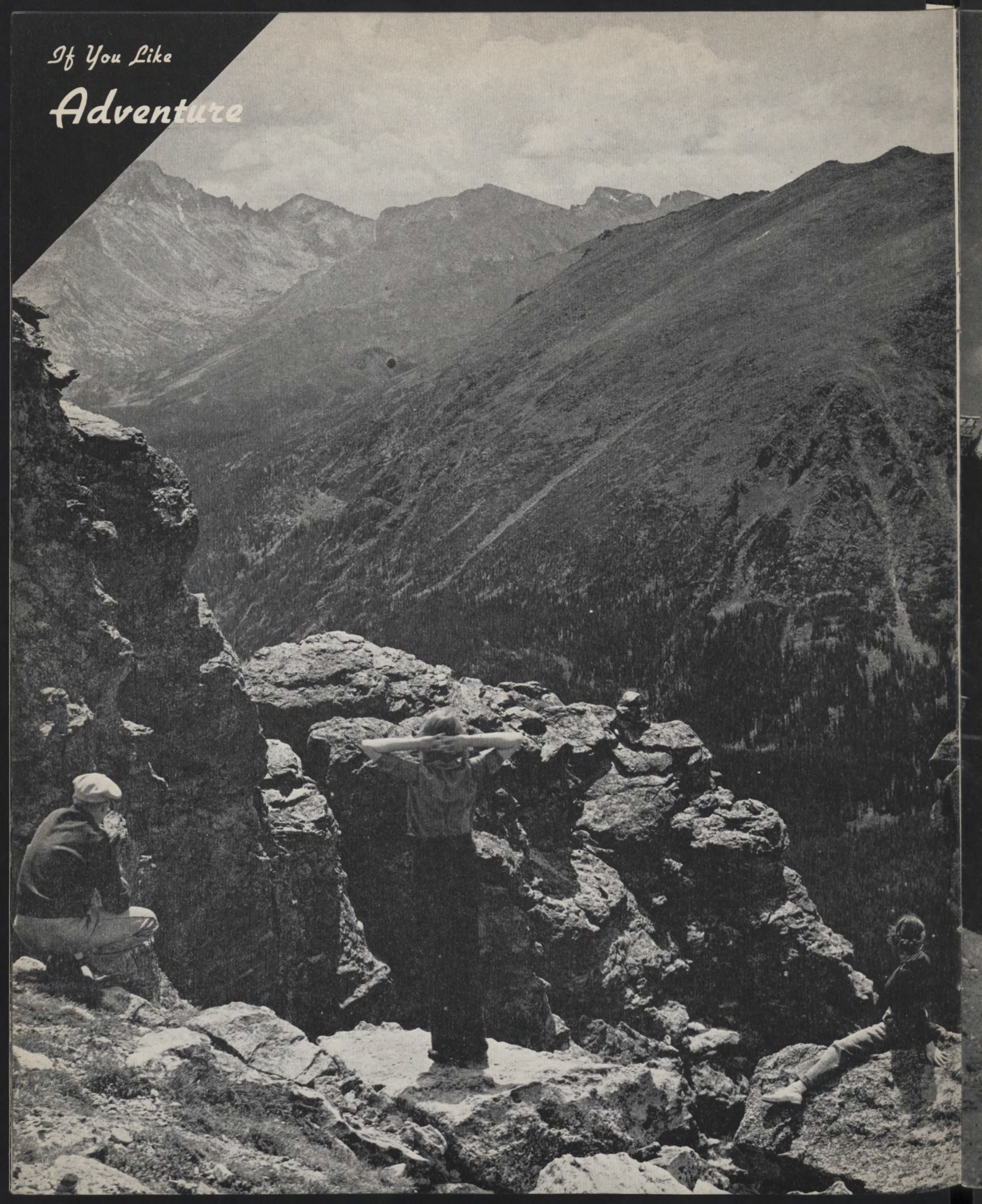
## Colorado

IS THE HOME  
CORRAL OF BUF-  
FALO BILL, STAGE  
COACHES, DUDE  
RANCHES, HIGH-HEEL  
BOOTS.

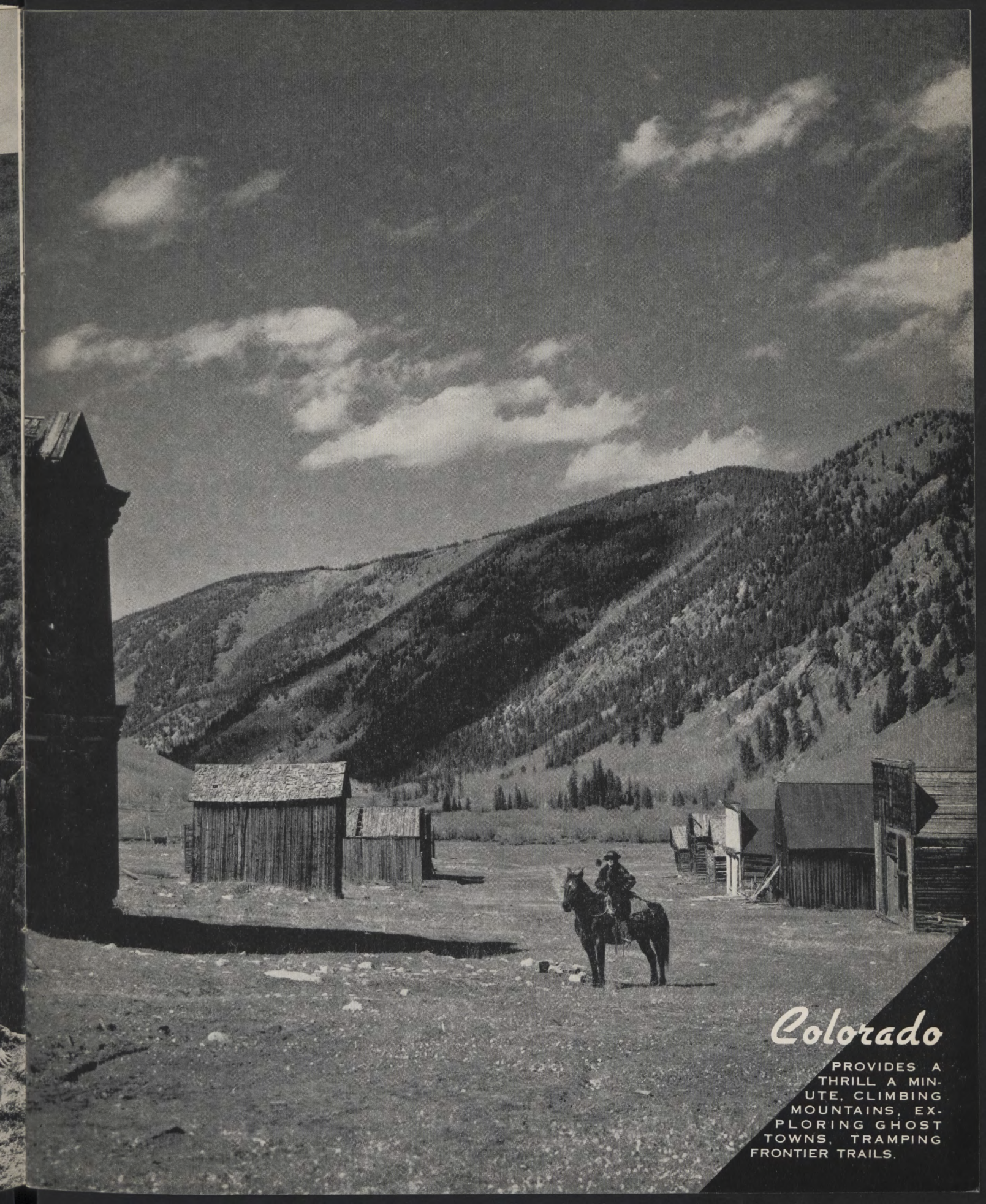


*If You Like*

*Adventure*







## *Colorado*

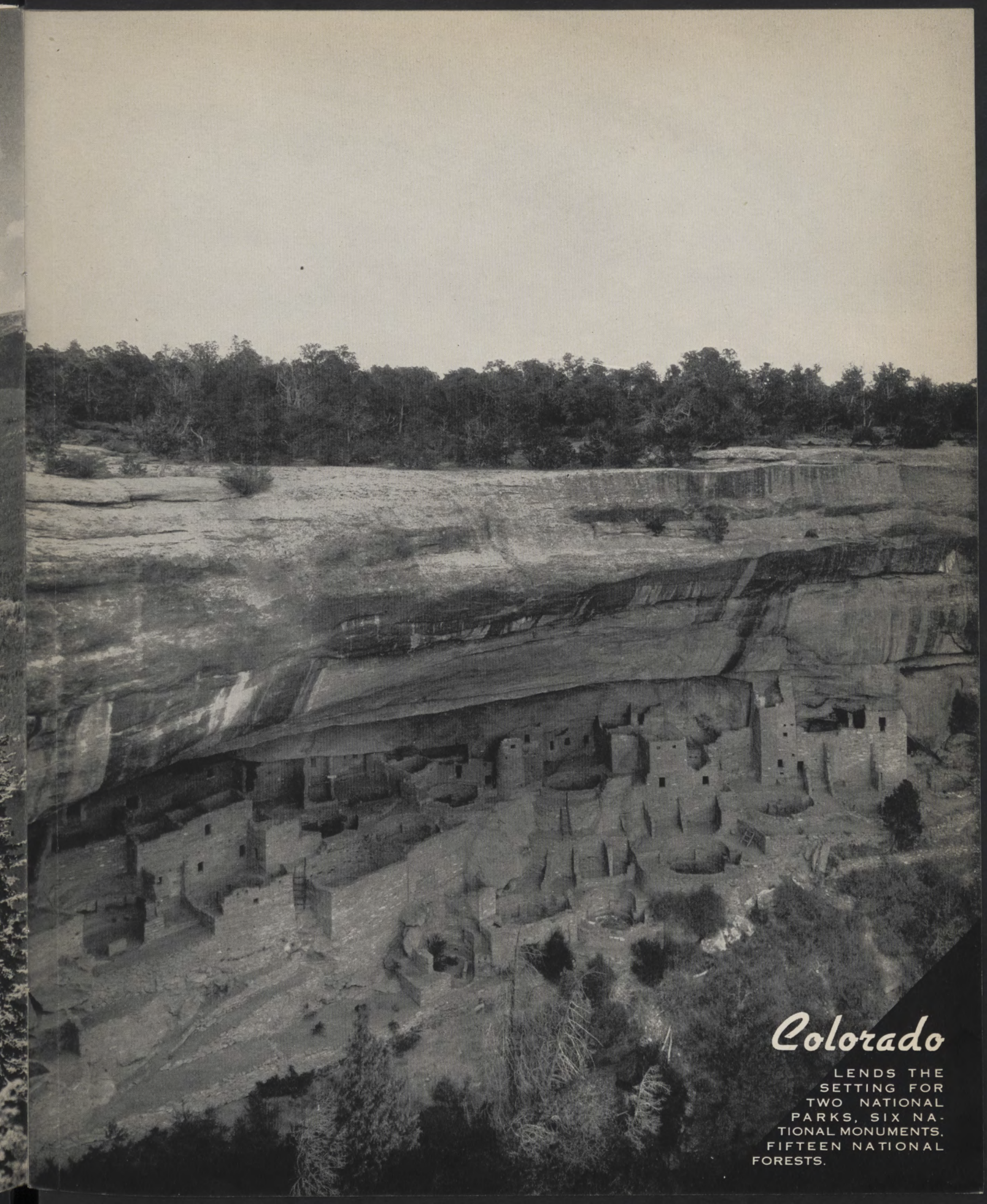
PROVIDES A  
THRILL A MIN-  
UTE, CLIMBING  
MOUNTAINS, EX-  
PLORING GHOST  
TOWNS, TRAMPING  
FRONTIER TRAILS.



*If You Like*  
**Grandeur**







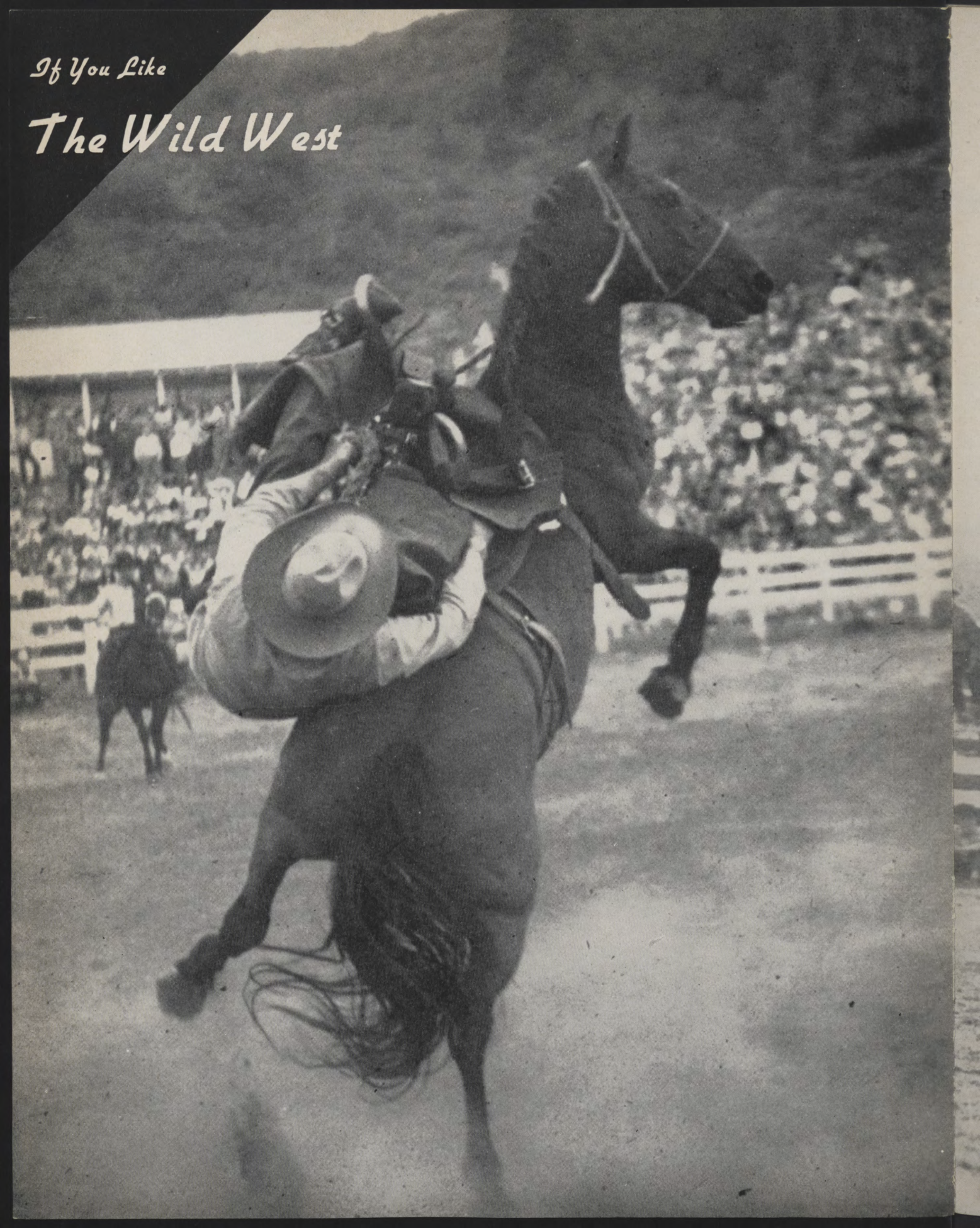
## *Colorado*

LEND'S THE  
SETTING FOR  
TWO NATIONAL  
PARKS, SIX NA-  
TIONAL MONUMENTS,  
FIFTEEN NATIONAL  
FORESTS.

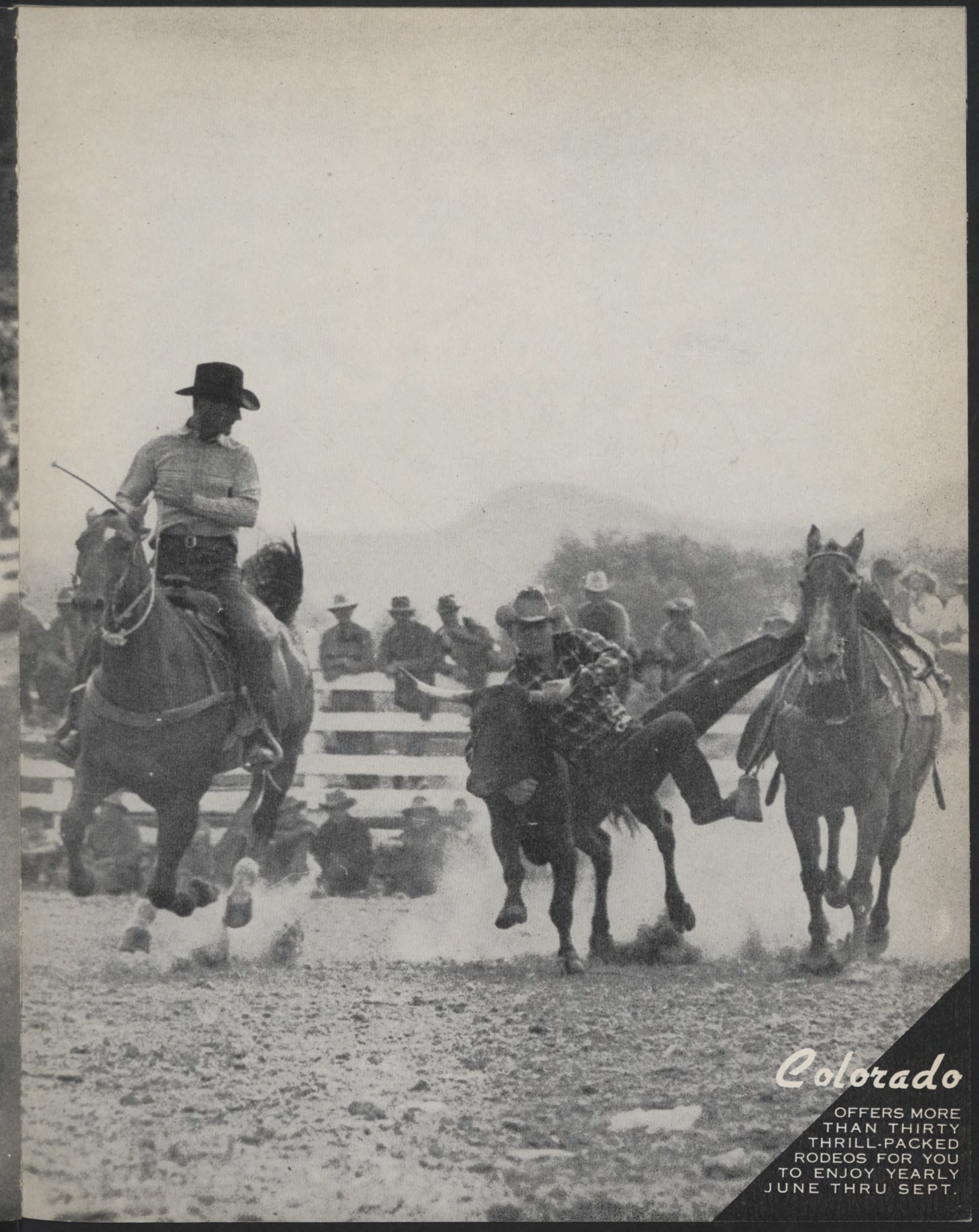


*If You Like*

*The Wild West*







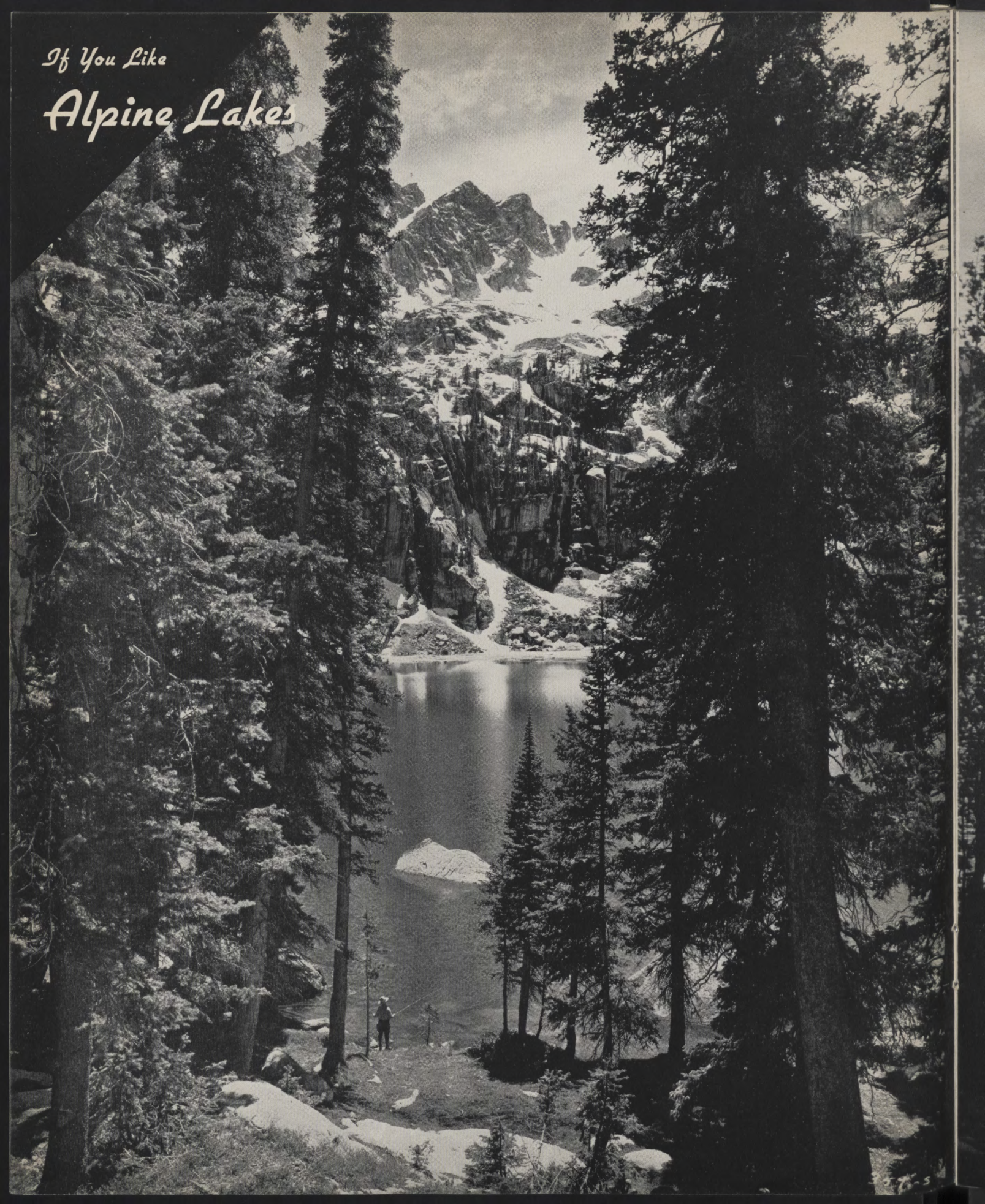
## *Colorado*

OFFERS MORE  
THAN THIRTY  
THRILL-PACKED  
RODEOS FOR YOU  
TO ENJOY YEARLY  
JUNE THRU SEPT.

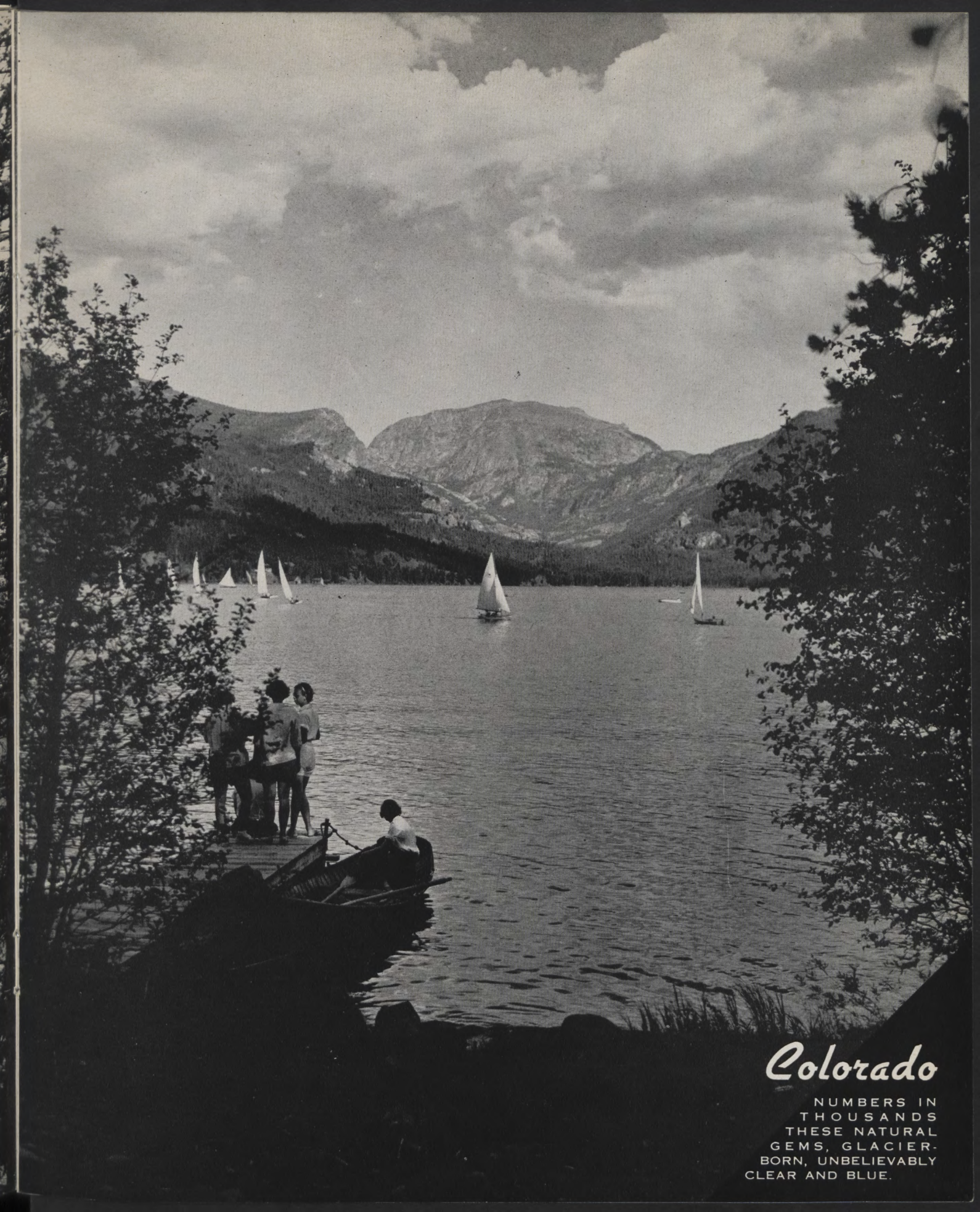


*If You Like*

*Alpine Lakes*







## *Colorado*

NUMBERS IN  
THOUSANDS  
THESE NATURAL  
GEMS, GLACIER-  
BORN, UNBELIEVABLY  
CLEAR AND BLUE.



# A MAP OF Historic COLORADO

Locating only a few of the many Adventures on the Frontier that became Colorado.

## LEGEND

- FUR POSTS ⊕
- FORTS ★
- BATTLEFIELDS ✕
- RAILROADS ———
- STAGE ROUTES ———
- INDIAN TRAILS ———
- EMIGRANTS and OTHERS ———
- INDIAN CAMPS ⦿





*If You Like*

*Wild Life*







## *Colorado*

NURTURES AN  
AMAZING VARI-  
ETY: FLORA AND  
FAUNA FROM THE  
SUB-TROPICS TO THE  
ARCTIC.



*If You Like  
Sports...*







## *Colorado*

BOASTS ALL-SPORTS FACILITIES, AND THE ZESTFUL CLIMATE THAT MEANS PLUS ENJOYMENT.

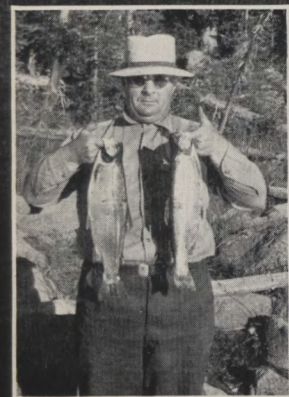


*If You Like*

*Hunting and  
Fishing*







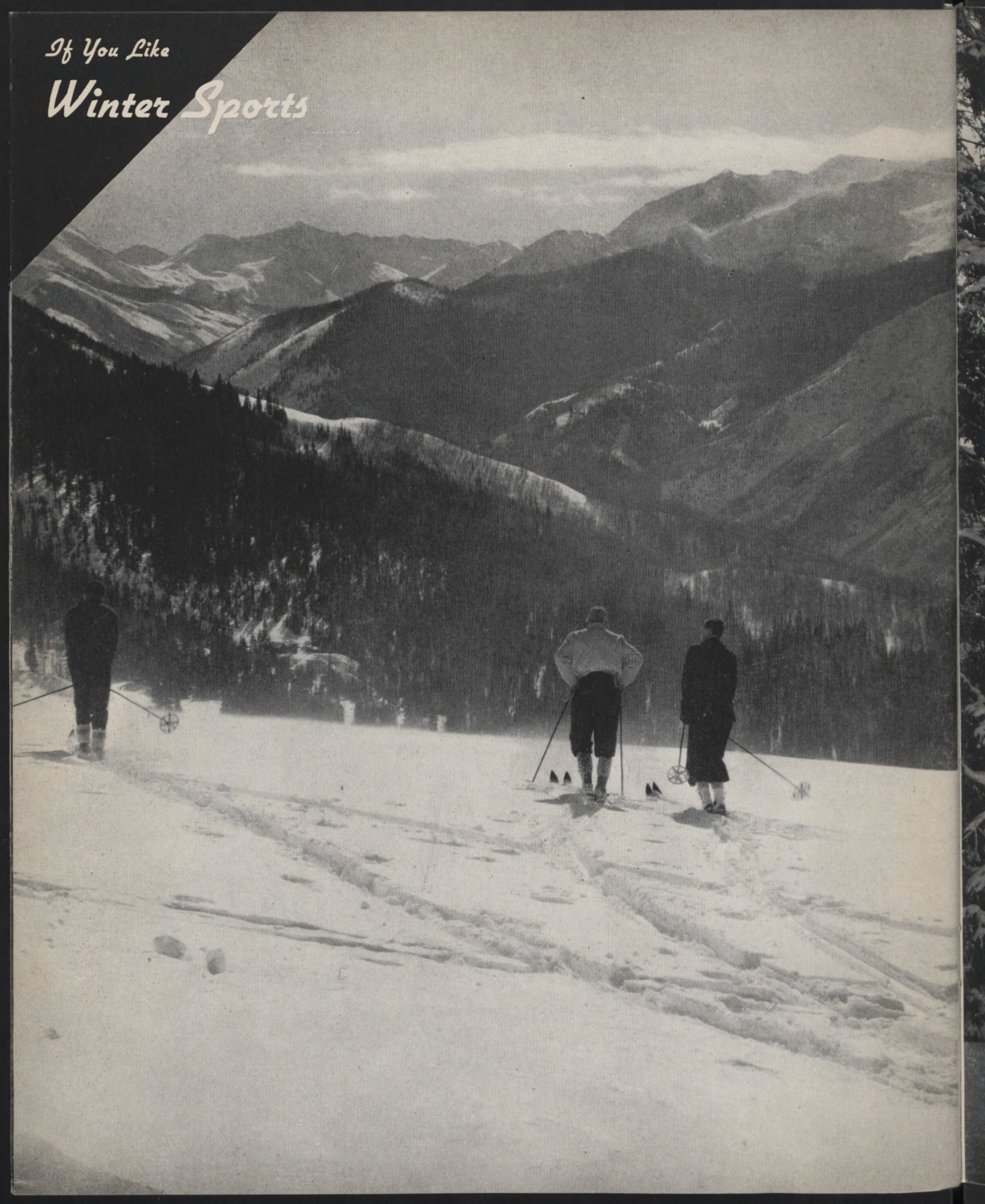
## *Colorado's*

SNOW-FED  
RIVERS, WIL-  
DERNESS LAKES,  
AND VIRGIN FOR-  
ESTS TEEM WITH BIG  
GAME, SMALL GAME,  
FIGHTING TROUT.

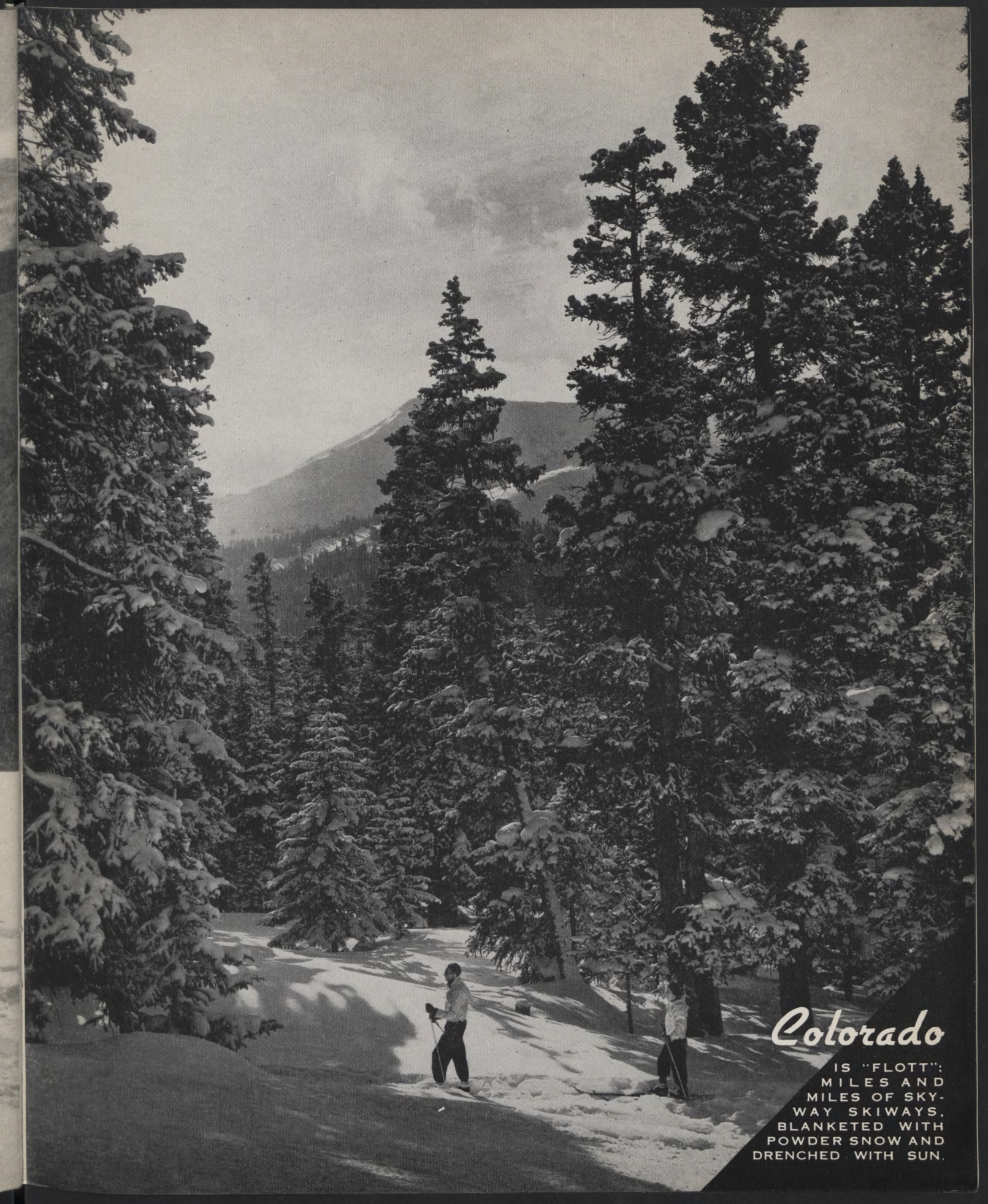


*If You Like*

# *Winter Sports*





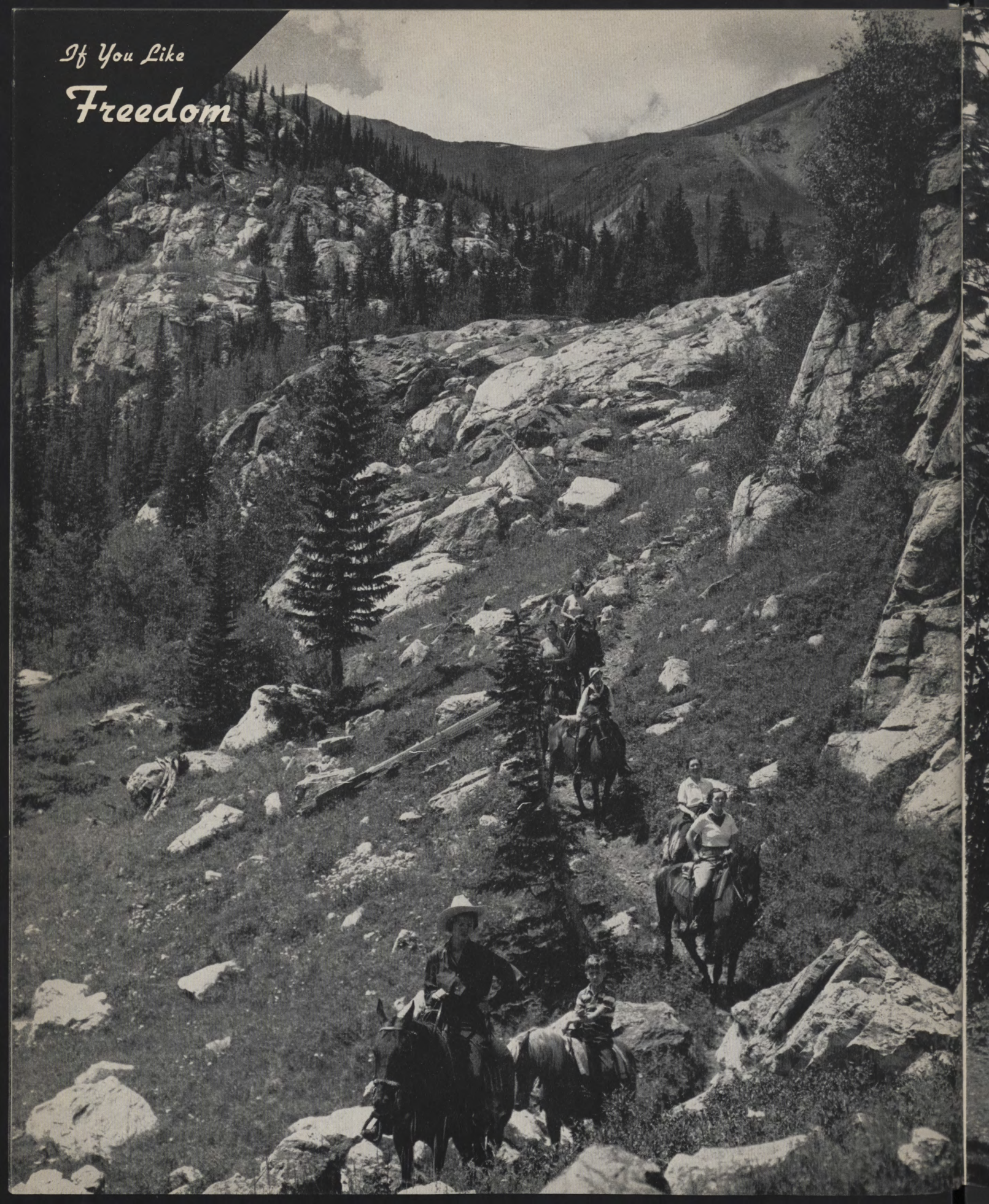


## *Colorado*

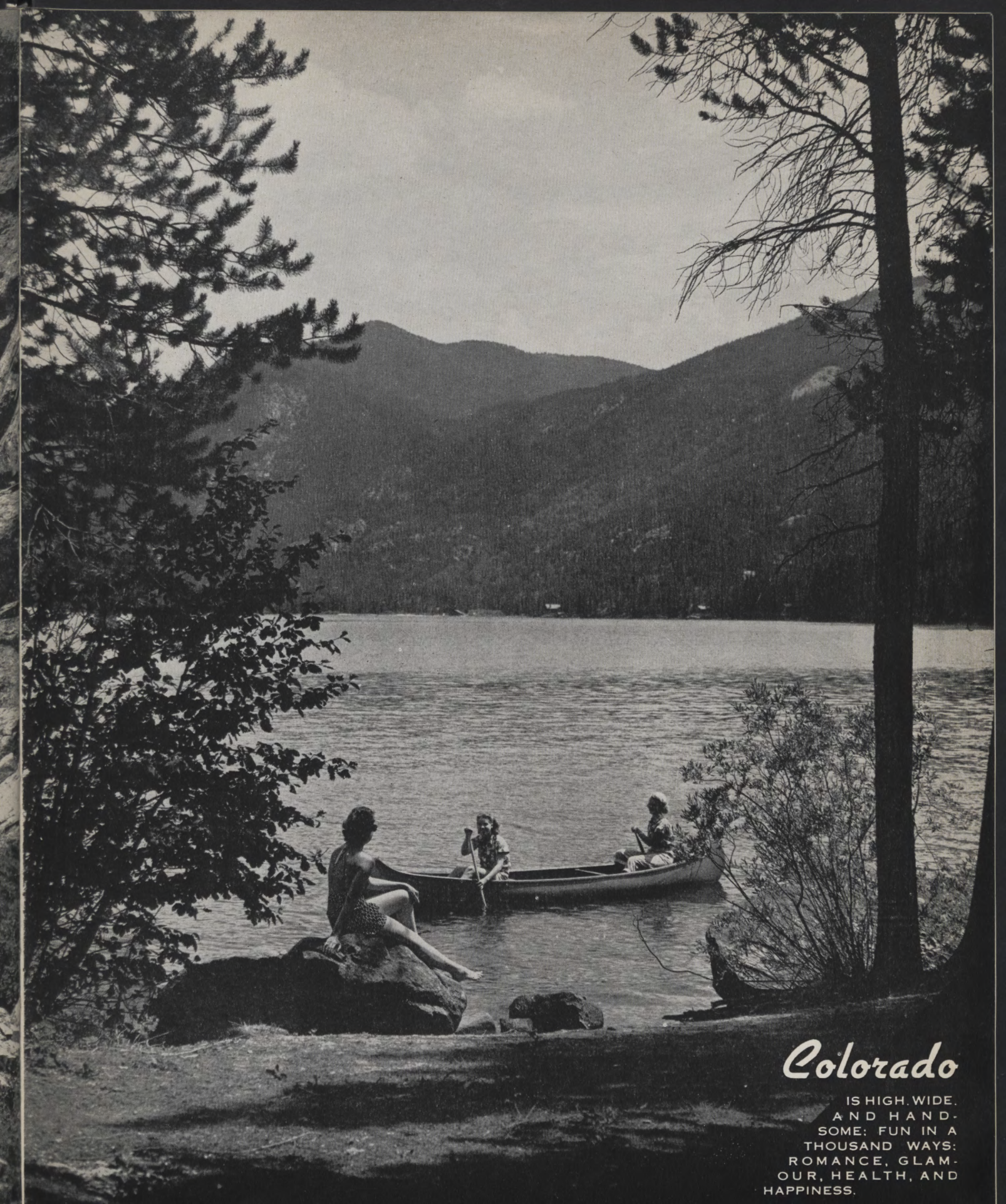
IS "FLOTT":  
MILES AND  
MILES OF SKY-  
WAY SKIWAYS,  
BLANKETED WITH  
POWDER SNOW AND  
DRENCHED WITH SUN.



*If You Like  
Freedom*








## *Colorado*

IS HIGH, WIDE,  
AND HAND-  
SOME: FUN IN A  
THOUSAND WAYS:  
ROMANCE, GLAM-  
OUR, HEALTH, AND  
HAPPINESS.

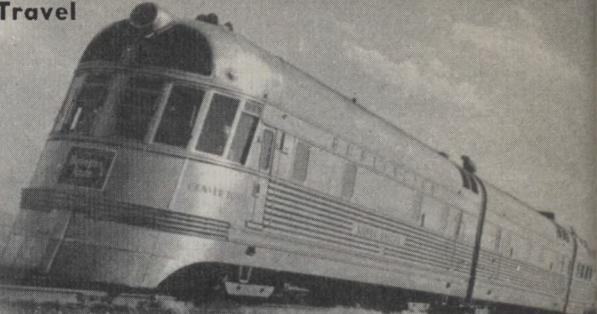


# S-T-R-E-T-C-H *Your Vacation at the Top of the Nation*


Colorado's Central Location and Modern Transportation Facilities  
Eliminate Days of Time-Wasting Travel




By Personal Plane You're at  
Your Ranch 11 Hours from Seattle




By Fast Streamliner Just  
Overnight from Chicago




Swift New Planes Bring You  
From New York in Eight Hours




It's Less than Five Hours  
Here by Air from El Paso



Through the Rockies from  
Salt Lake City Overnight



By Modern Buses from New  
Orleans in a Day and a Half



Three Leisurely Days in Your  
Own Car from Los Angeles

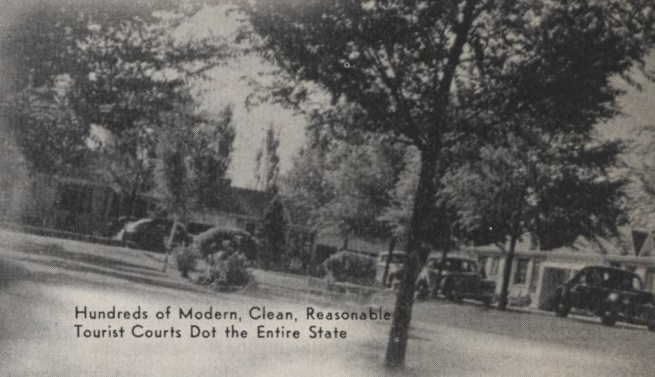


# ACCOMMODATIONS *for Every Taste in Colorful Colorado*

The State That Tops the Nation Offers the Widest Possible Range of Hotels and Resorts for Your Holiday Enjoyment



Fun-Filled Days and Nights Are Yours  
On a Hospitable Colorado Dude Ranch



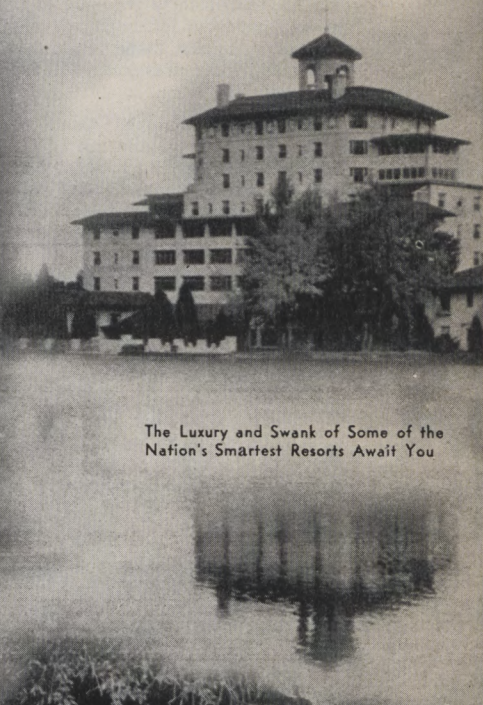
Hundreds of Modern, Clean, Reasonable  
Tourist Courts Dot the Entire State



Well Equipped Housekeeping Cabins  
Abound in Hunting and Fishing Areas



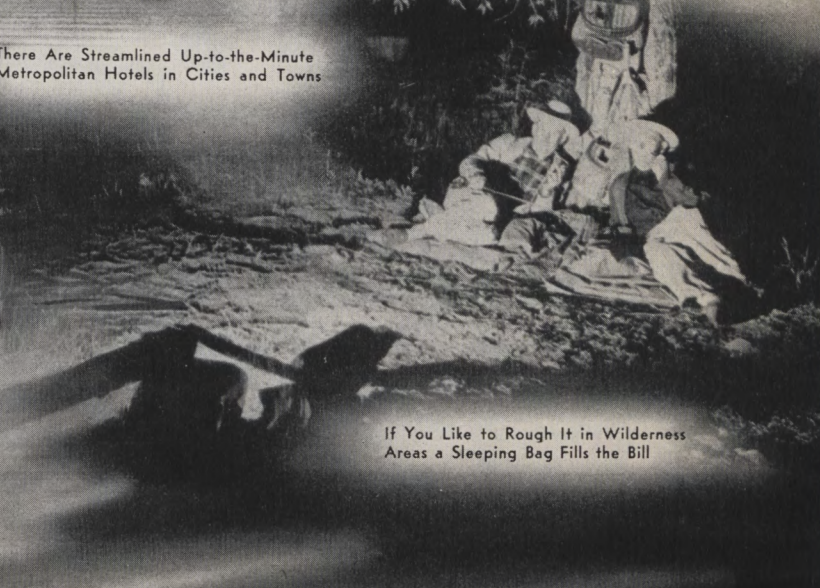
There Are Streamlined Up-to-the-Minute  
Metropolitan Hotels in Cities and Towns



The Luxury and Swank of Some of the  
Nation's Smartest Resorts Await You



For Your Winter Fun Picturesque Ski  
Lodges Add Good Fellowship and Cheer



If You Like to Rough It in Wilderness  
Areas a Sleeping Bag Fills the Bill



## DIRECTORY

**AKRON**—Washington County seat—Altitude 4,300 feet; population 1,417. U. S. 34. Agriculture is the main industry.

**ALAMOSA**—Alamosa County seat—Altitude 7,536 feet; population 5,613. U. S. 160, 285; State 17, 158. The largest city in the San Luis Valley, a rich farming and ranching region containing four and a half million acres and entirely surrounded by high mountains. 35 miles northeast of Alamosa is the Great Sand Dunes National Monument which contains the largest sand dunes in the United States.

**ASPEN**—Pitkin County seat—Altitude 7,850 feet; population 777, State highway 82. Aspen formerly was one of the West's most prosperous mining towns, and is now on its way to new fame as the center of the greatest winter playground in the country.

**BOULDER**—Boulder County seat—Altitude 5,354 feet; population 12,958. State 7, 119, 168. Boulder is a modern and progressive education center thirty miles northwest of Denver "where the mountains meet the plains." The city's water supply comes from a municipally owned glacier high up in the Arapahoe peaks of the Rockies.

Boulder is the home of the famous Colorado Chautauqua and the University of Colorado, founded in 1877.

**BRECKENRIDGE**—Summit County seat—Altitude 9,579 feet; population 381. State 9. Breckenridge is one of the oldest towns in Colorado and was the scene of much early day mining activity.

**BRIGHTON**—Adams County seat—Altitude 4,029 feet; population 4,100. U. S. 85; State 170. Brighton is located in one of the most fertile agricultural sections of Colorado.

**BRUSH**—Morgan County—Altitude 4,280 feet; population 2,481. U. S. 6; State 54, 71. Agriculture is main industry.

**BURLINGTON**—Kit Carson County seat—Altitude 4,250 feet; population 1,280. U. S. 24. Important dry-land farming area.

**CANON CITY**—Fremont County seat—Altitude 5,333 feet; population 6,690. U. S. 50; State 120. Canon City is a well known and popular Colorado resort, and is the home of the Colorado state penitentiary, one of the nation's model prisons. Scenic attractions include the Royal Gorge with the world's highest suspension bridge and steepest incline railroad, the sky line drive which offers a beautiful view of the city and surrounding territory, Temple Canon and the Ute Burial Grounds.

**CASTLE ROCK**—Douglas County seat—Altitude 6,000 feet; population 580. U. S. 85, 87; State 86.

**CENTRAL CITY**—Gilpin County seat—Altitude 8,560 feet; population 706. State 119. Central City, with its companion mining camp, Black Hawk, sprang up almost over night when the first important gold discovery in Colorado was made in 1859.

**CHEYENNE WELLS**—Cheyenne County seat—Altitude 4,285 feet; population 695. U. S. 40; State 51.

**COLORADO SPRINGS**—El Paso County seat—Altitude 5,900 feet; population 36,789. U. S. 24, 85, 87; State 94, 115, 122. Near the base of Pikes Peak, adjacent to Manitou Springs and the Garden of the Gods, and gateway to the Pikes Peak region.

There is year-round entertainment here: in winter, skiing and other snow sports; in summer, all varieties of indoor and outdoor entertainment.

Among the many things to be seen are the Colorado Springs Fine Arts Center, Colorado College, Garden of the Gods, Seven Falls, and the Penrose Stadium where the city's famous rodeo is held in August.

A streamlined cog railroad and cable incline cars climb to the top of Pikes Peak and Mt. Manitou.

**CONEJOS**—Conejos County seat—Altitude 7,900 feet; population 319. U. S. 285. An old Mexican settlement, still clinging to the customs of other days.

**CORTEZ**—Montezuma County seat—Altitude 6,198 feet; population 1,778. U. S. 84, 160. Center of a vast plateau region, devoted to sheep and cattle.

**CRAIG**—Moffat County seat—Altitude 6,200 feet; population 2,123. U. S. 40; State 13. Located in a dry farming and stock-raising section Craig is the state's largest shipping point for sheep and wool. Near here is Colorado's largest producing oil field.

**CREEDE**—Mineral County seat—Altitude 8,854 feet; population 670. State 149. Creede is a very important mining camp, but also has become a prosperous ranching and stock-raising section. The Rio Grande River and the numerous lakes and streams provide remarkable trout fishing. Big game is also quite plentiful. Sixteen miles from Creede is the spectacular Wheeler National Monument.

**CRIPPLE CREEK**—Teller County seat—Altitude 9,375 feet; population 2,358. State 67, 143. This famous gold camp, built on hill sides surrounded by the great dump heaps of the old mines, is replete with historic spots and romantic tales of the thrilling gold rush days of the nineties. An active mining center at the present time, Cripple Creek is one of the nation's leading gold producers.

**DEL NORTE**—Rio Grande County seat—Altitude 7,778 feet; population 1,923. U. S. 160, 285; State 112. The town enjoys the distinction of being the greatest shipping point for vegetables in the state.

**DELTA**—Delta County seat—Altitude 4,980 feet; population 3,717. U. S. 50; State 65, 92. Delta is the gateway to the Grand Mesa lakes and Uncompahgre National Forest. It is located in a territory which is said to have more varied and potential resources than any similar area in the United States.

**DENVER**—Denver County seat—Capital of Colorado—Altitude 5,280 feet; population 322,412. U. S. 6, 40, 85, 87, 285, 287. Denver is America's highest metropolis.

Things to see include the mile-high State Capitol; the Civic Center with the Municipal Building and Greek Stadium; the Colorado State Museum across from the Capitol; the Zoo in City Park, where also is the Colorado Museum of Natural History; Fitzsimons General Hospital, largest army hospital in the world; Customs House and Federal Building are two of the buildings housing government offices of which there are so many in the city that it has become known as the "western capital"; Lowry Field, a famous army aviation technical school; the United States Mint; and many other attractions connected with Denver's historic and colorful past.

Included in the Mountain Parks System and within a few miles of Denver is the Park of the Red Rocks whose natural sounding board has made the place a perfect amphitheatre for outdoor productions; Buffalo Bill's grave atop Lookout Mountain, and Mt. Evans which boasts the highest highway in the world—14,260 feet to the top of the peak.

**DURANGO**—La Plata County seat—Altitude 6,505 feet; population 5,887. U. S. 160, 550. Durango is the business center and metropolis of the San Juan Basin, and the only city in La Plata County. The town is an important shipping point and is rapidly becoming one of Colorado's most popular resorts.



**EADS** — Kiowa County seat — Altitude 4,262 feet; population 700. State 59, 96.

**EAGLE** — Eagle County seat — Altitude 6,602 feet; population 518. U. S. 6, 24. Eagle is located in a rich mountain agricultural region. The territory affords abundant summer pasturage for thousands of pure-bred cattle.

**ESTES PARK** — Larimer County — Altitude 7,500 feet; population 994. U. S. 34; State 7, 66. Situated in a beautiful valley entirely surrounded by rugged snow-capped peaks, Estes Park is the east gateway to Rocky Mountain National Park. The village is the starting point of spectacular trips into the park and surrounding region. Most breath-taking is the new Trail Ridge Highway which follows an Indian trail up and over the Continental Divide, reaching an altitude of 12,227 feet. This road is the world's highest continuous automobile road.

**FAIRPLAY** — Park County seat — Altitude 9,964 feet; population 739. U. S. 285; State 9. Fairplay is located in the rich cattle-raising and mining section of South Park. It is almost the geographical center of the state.

**FLORENCE** — Fremont County — Altitude 5,187 feet; population 2,632. U. S. 50; State 115. Florence Oil Field, which has been producing since 1862, is second oldest in the United States.

**FORT COLLINS** — Larimer County seat — Altitude 5,100 feet; population 12,251. U. S. 87, 287; State 14. Fort Collins was founded 75 years ago by the United States Army to serve as a base of operation against Indians in this district. One of the earliest and most famous officers in charge of the fort was Colonel William O. Collins, for whom the fort and later the city was named.

Fort Collins is the home of Colorado State College of Agriculture and Mechanic Arts, more popularly called "Colorado Aggies."

Fishing and hunting are especially good in the Fort Collins district.

**FORT LUPTON** — Weld County — Altitude 4,906 feet; population 1,692. U. S. 85; State 52. Fort Lupton was established in 1836 as an Indian trading post and was the first fixed abode of white men in northern Colorado.

**FORT MORGAN** — Morgan County seat — Altitude 4,240 feet; population 4,884. U. S. 6; State 52. Fort Morgan is the heart of one of the world's most famous sugar beet sections.

Cattle and sheep feeding are multi-million-dollar industries.

**GEORGETOWN** — Clear Creek County seat — Altitude 8,640 feet; population 391. U. S. 6 and four miles from U. S. 40. The town is located at the head of Clear Creek Canyon near where the first discovery of silver in Colorado was made in 1860. The nearby town of Silver Plume is another famous mining camp of the early days.

**GLENWOOD SPRINGS** — Garfield County seat — Altitude 5,823 feet; population 2,253. U. S. 6, 24; State 82. The town is a year around health and pleasure resort, famous for its hot mineral springs and natural vapor caves. Glenwood is the headquarters of two national forests — the Holy Cross and the White River. Among the outstanding scenic attractions are Hanging Lake, Bridal Veil Falls, Glenwood Canyon, and the Ski-Hi Drive.

**GOLDEN** — Jefferson County seat — Altitude 5,680 feet; population 3,175. On the scenic branch of U. S. 6 and 40 over Lookout Mountain; State 68. Golden, the second state capital of Colorado, is the home of the Colorado School of Mines, one of the highest accredited schools of its kind in the world.

**GRAND JUNCTION** — Mesa County seat — Altitude 4,587 feet; population 12,479. U. S. 6, 24, 50. The city is located at the junction of the Gunnison and the Colorado Rivers, from which the name is taken. The surrounding territory is an extensive irrigated farmland area that produces a great variety of products, particularly fruits.

Five miles west of the city is Colorado National Monument, one of the most highly developed and picturesque of all the national monuments. A short distance east is Grand Mesa National Forest, one of the state's best known attractions. Grand Mesa is the largest flat top mountain in the world, and on its top are more than 300 volcanic lakes.

**GRAND LAKE** — Grand County — Altitude 8,153 feet; population 350. U. S. 34. The village of Grand Lake, situated on the western border of Rocky Mountain National Park and on the northern shore of Grand Lake, is one of the most popular summer resorts in Colorado. It is the anchorage of the Grand Lake Yacht Club, the highest in the world.

**GREELEY** — Weld County seat — Altitude 4,637 feet; population 15,995. U. S. 34, 85; State 263.

The city, with an elevation of just a little less than a mile, is surrounded by thousands of acres of irrigated land that is admitted to be the most fertile in the state. Hundreds of thousands of lambs and high grade cattle are fed in feed lots located throughout the area.

Greeley is a center of education, being the home of Colorado State College of Education, one of the leading teacher

preparation institutions in the country, ranking second only to Columbia University.

**GUNNISON** — Gunnison County seat — Altitude 7,683 feet; population 2,177. U. S. 50; State 135. This town is the hub of a two million acre area, which includes miles of fishing water and forests, once the favorite hunting grounds of Indians. Nearby Taylor Park Dam and Reservoir form the largest lake in the State.

Gunnison's annual Free Fish Fry and Sportsmen's Tournament is known throughout the United States.

Western State College enjoys a national reputation.

**HOLYOKE** — Phillips County seat — Altitude 3,745 feet; population 1,150. U. S. 6. Cattle and farming are most important industries.

**HOT SULPHUR SPRINGS** — Grand County seat — Altitude 7,655 feet; population 235. U. S. 40. The name is taken from the hot springs located in the town which have been famous since Indian days.

**HUGO** — Lincoln County seat — Altitude 4,970 feet; population 852. U. S. 40. Important dry-land farming region.

**IDAHO SPRINGS** — Clear Creek County — Altitude 7,500 feet; population 2,112. U. S. 6, 40; State 103, 119. Idaho Springs is named for the hot radio-active mineral springs which abound in the region.

The first gold discovery in Colorado was made near the city at the mouth of Chicago Creek in 1859.

**JULESBURG** — Sedgwick County seat — Altitude 3,500 feet; population 1,619. U. S. 138; State 51. The town was one of the main stops on the famous Pony Express Route. It also was one of the principal headquarters for the Union Pacific in building its transcontinental railroad.

**KIOWA** — Elbert County seat — Altitude 6,400 feet; population 195. State 86, 157.

**KREMMLING** — Grand County — Altitude 7,322 feet; population 567. Some of the West's largest and finest cattle ranches are in the area.

**LA JUNTA** — Otero County seat — Altitude 4,100 feet; population 7,040. U. S. 50, 350; State 109. Situated on the Arkansas River in a very productive cattle and agricultural section. Eight miles from town are the remains of an old fort built by the Bent brothers and used as an Indian trading post. Also near here is the JJ ranch which once ran 44,000 head of cattle.

**LAKE CITY** — Hinsdale County seat — Altitude 8,500 feet; population 185. State 149. Lake City named for the lovely lakes in the vicinity, is situated in one of the most picturesque locations in the Rockies.



**LAMAR**—Prowers County seat—Altitude 3,500 feet; population 4,445. U. S. 50, 287; State 59. Lamar is the trading center of an extensive farming and dairying territory. It is located on the old Santa Fe Trail. Near Lamar is Fort Bent, from which the start as a trading center is dated.

**LAS ANIMAS**—Bent County seat—Altitude 4,100 feet; population 3,232. U. S. 50; State 101. Las Animas is headquarters of the new multi-million-dollar John Martin Reservoir project. Just east of the city is Fort Lyons, an old-time Indian outpost, where today the Government operates a large hospital for disabled veterans.

**LEADVILLE**—Lake County seat—Altitude 10,190 feet; population 4,774. U. S. 6, 24; State 104. A famous and colorful mining town, lying between the two highest mountain ranges in the state. Mt. Elbert, the state's highest peak, and Mt. Massive, second highest, are on the west. Twelve miles northeast of Leadville is Climax, site of the world's greatest molybdenum mine, where more than seventy-five per cent of the world's supply of this metal is produced.

**LITTLETON**—Arapahoe County seat—Altitude 5,362 feet; population 2,244. U. S. 85, 87. Dairying and truck farming are main industries.

**LONGMONT**—Boulder County—Altitude 5,000 feet; population 7,406. U. S. 87; State 66. A beautiful and progressive city located in a fertile agricultural and stock-raising region. Manufacturing is one of the main industries.

**LOVELAND**—Larimer County—Altitude 4,982; population 6,145. U. S. 34, 87. Located in the Big Thompson valley, the town is widely known as a fruit center. It is one of the most popular gateways to Rocky Mountain National Park.

**MANITOU SPRINGS**—El Paso County—Altitude 6,336 feet; population 1,462. Manitou Springs, from the beginning of its history which dates back to Indian origin, has been famous for its natural scenic beauty and accessibility. Noted scenic features such as the "Cave of the Winds," the "Cog Railroad to Pikes Peak," and the "Garden of the Gods," are all located in or near the town.

**MEEKER**—Rio Blanco County seat—Altitude 6,240 feet; population 1,399. State 13, 64, 132. Meeker is the main entrance to the famed White River National Forest, a hunter's and fisherman's paradise. Near Meeker is the site of the famous Meeker Indian massacre.

**MONTE VISTA**—Rio Grande County—Altitude 7,500 feet; population 3,208. U. S. 180, 285. A region of historic legend, rich in exploits of the hardy pioneers who conquered the great West. The town is the home of the famous Ski-Hi Stampede and of the equally famed Red McClure potato.

**MONTROSE**—Montrose County seat—Altitude 5,820 feet; population 4,764. U. S. 50, 550; State 90. Montrose is the chief city of the Uncompahgre Valley. Sixteen miles northeast is the Black Canyon of the Gunnison, 2000 feet in depth. Close by are the Chief Ouray and Chipeta Monuments, Buckhorn Lakes and picture rocks.

**ORDWAY**—Crowley County seat—Altitude 4,300 feet; population 1,150. State 71, 96. Extensive irrigated farming.

**OURAY**—Ouray County seat—Altitude 7,800 feet; population 951. U. S. 550. The town was named for the great chief of the Uncompahgre Utes, a true white man's friend, and is in a region which richly merits its designation as the "Switzerland of America." Nearby is Box Canon Falls, an amazing natural phenomena. The section of U. S. 550 between Ouray and Silverton is known as the "Million Dollar Highway."

**PAGOSA SPRINGS**—Archuleta County seat—Altitude 7,077 feet; population 1,591. U. S. 160; State 17. Pagosa Springs had its beginning July 5, 1883, when government patents were issued to Major Henry Foote, John Conover, J. L. Byers, and A. C. Van Duyn, covering a total of eighty acres surrounding the great mineral hot spring. This spring was called "Pagosa" by the Ute Indians and means "healing waters."

**PUEBLO**—Pueblo County seat—Altitude 4,700 feet; population 52,162. U. S. 50, 85, 87; State 76, 96. Pueblo, the Pittsburgh of the West, is the second largest city in the state and one of the foremost industrial and manufacturing cities west of the Mississippi River. It is the site of the West's largest steel mills and is the home of the Colorado State Fair.

Just forty minutes to the west is San Isabel National Forest and the spacious Pueblo mountain parks. San Isabel contains 657,200 acres of indescribably beautiful country. The Sangre de Cristo Range, with its rugged array of peaks, rises above a wide plain. Crystal clear lakes, rushing trout streams, magnificent stretches of heavily timbered slopes, natural parks and meadows, combine to make this forest reserve one of the most popular in the Rockies. The St. Charles Recreational Area, in the heart of the forest, provides ample facilities for visitors.

**RICO**—Dolores County seat—Altitude 8,900 feet; population 388. State 145. Rico is situated on the Dolores River in a high mountain park. The town is an important mining center.

**RIFLE**—Garfield County—Altitude 5,332 feet; population 1,373. U. S. 6, 24; State 13. Rifle is an important shipping point for cattle and sheep.

**ROCKY FORD**—Otero County—Altitude 4,250 feet; population 3,494. U. S. 50; State 71. Rocky Ford is one of the most widely known communities in Colorado because of its seed and melon industries. The fine flavor of the cantaloupes and other melons has given the city the title "Melon Capital of the World."

**SAGUACHE**—Saguache County seat—Altitude 7,800 feet; population 1,219. U. S. 285; State 114. The town is in the northern part of the rich San Luis Valley. Farming and stock raising are the principal industries.

**SALIDA**—Chaffee County seat—Altitude 7,050 feet; population 4,969. U. S. 50, 285. Known as the "Heart of the Rockies" and surrounded by some of the state's highest mountains, Salida is in the midst of an area that contains many scenic wonders. The nearby "Snow Angel of Shavano" is a well known scenic attraction, and the Collegiate Peaks north of the city are perfect examples of Colorado's mountain wonderland.

**SAN LUIS**—Costilla County seat—Altitude 7,876 feet; population 1,500. State 159, 199. San Luis is the oldest town in the State. The old Spanish settlements, the largest public Commons in the United States, and the Sanchez Reservoir are points of interest.

**SILVERTON**—San Juan County seat—Altitude 9,302 feet; population 1,127. U. S. 550; State 110. Silverton is on the world famous Million Dollar Highway.

San Juan County is unique in that it contains not one acre of agricultural land. It is fabulously rich in mineral wealth.

**SPRINGFIELD**—Baca County seat—Altitude 4,400 feet; population 1,082. U. S. 160; State 59, 100. The locality raises approximately one-fifth of all the broom-corn produced in the United States.

**STEAMBOAT SPRINGS**—Routt County seat—Altitude 6,762 feet; population 1,613. U. S. 40; State 129, 131. A town entirely surrounded by mountains and boasting a great number and variety of hot mineral springs. In winter the town is a center of snow sports activities, and the Winter Sports Carnival staged each February attracts sportsmen from all over the nation.



**STERLING** — Logan County seat — Altitude 3,947 feet; population 7,411. U. S. 6, 138; State 14, 154. Sterling is the main distributing center for northeastern Colorado. The leading industry is agriculture, which includes both irrigated and dry-land farming.

**TELLURIDE** — San Miguel County seat — Altitude 8,500 feet; population 1,337. State 108, 145. The town is situated in the richest and most mineralized area in the world, and contains the longest gold-bearing quartz vein ever discovered.

**TRINIDAD** — Las Animas County seat — Altitude 6,000 feet; population 13,223. U. S. 85, 87, 160, 350; State 12. The city is the north entrance to Raton Pass, and is situated in a large mining and cattle

district. Fisher's Peak, an old landmark on the Santa Fe Trail, is adjacent. North and west of Trinidad are San Isabel National Forest, Stonewall and Monument Lakes, the Spanish Peaks, and the Sangre de Cristo Range.

**WALDEN** — Jackson County seat — Altitude 8,300 feet; population 668. State 14, 125. The town is in the center of North Park, a high level mountain meadow over 8,000 feet above sea level and entirely surrounded by mountains.

**WALSENBURG** — Huerfano County seat — Altitude 6,200 feet; population 5,855. U. S. 85, 87, 160; State 10. Walsenburg is in the center of a rich coal producing territory, the mining of which is the main industry. The nearby Spanish Peaks,

known to Indians as Huajatolla, were the first peaks sighted by explorers in the fifteenth century.

**WESTCLIFFE** — Custer County seat — Altitude 7,800 feet; population 429. State 69, 277. The town is in the famous Wet Mountain Valley, high up in the mountains of southern Colorado.

**WRAY** — Yuma County seat — Altitude 3,500 feet; population 2,061. U. S. 34; State 51. Wray is the trading center and largest town for a radius of 100 miles, and is situated in a region well adapted to livestock-raising and farming.

Seventeen miles south of Wray is Beecher's Island, where, in September, 1868, 75 scouts fought 3,000 Indian braves in a battle that was one of the bloodiest in frontier history.

**FOR MORE DETAILED INFORMATION WRITE ANY OF THE FOLLOWING CIVIC CLUBS**

|                                      |                                      |  |                                      |
|--------------------------------------|--------------------------------------|--|--------------------------------------|
| Aguilar .....Chamber of Commerce     | Derby .....Businessmen's Association | Hayden .....Lions Club                 | Oak Creek .....Chamber of Commerce   |
| Akron .....Civic Club                | Dillon .....Chamber of Commerce      | Holly .....Commercial Club             | Ordway .....Lions Club               |
| Alamosa .....Chamber of Commerce     | Dolores .....Chamber of Commerce     | Holyoke .....Commercial Club           | Otis .....Commercial Club            |
| Artesia .....Chamber of Commerce     | Dove Creek .....Chamber of Commerce  | HotSulphurSpgs. Chamber of Commerce    | Ouray .....Chamber of Commerce       |
| Arvada .....Chamber of Commerce      | Durango .....Chamber of Commerce     | Hugo .....Lions Club                   | Pagosa Springs .....Lions Club       |
| Aspen .....Lions Club                | Eads .....Lions Club                 | Idaho Springs...Chamber of Commerce    | Paonia .....Chamber of Commerce      |
| Ault .....Lions Club                 | Eagle .....Chamber of Commerce       | Johnstown .....Community Club          | Pritchett .....Chamber of Commerce   |
| Aurora .....Chamber of Commerce      | Elizabeth .....Chamber of Commerce   | Julesburg .....Chamber of Commerce     | Pueblo .....Chamber of Commerce      |
| Berthoud .....Chamber of Commerce    | Englewood .....Chamber of Commerce   | Kit Carson .....Chamber of Commerce    | Rangely .....Chamber of Commerce     |
| Boulder .....Chamber of Commerce     | Estes Park .....Chamber of Commerce  | Kremmling .....Chamber of Commerce     | Ridgway .....Commercial Association  |
| Branson .....Community Club          | Evergreen .....Chamber of Commerce   | La Junta .....Chamber of Commerce      | Rifle .....Chamber of Commerce       |
| Brighton .....Chamber of Commerce    | Fairplay .....Chamber of Commerce    | Lakewood .....Civic Association        | Rocky Ford .....Chamber of Commerce  |
| Brush .....Civic Club                | Flagler .....Lions Club              | Lamar .....Chamber of Commerce         | Saguache .....Kiwanis Club           |
| Buena Vista ...Chamber of Commerce   | Fleming .....Community Club          | Las Animas ....Chamber of Commerce     | Salida .....Chamber of Commerce      |
| Burlington .....Chamber of Commerce  | Florence .....Chamber of Commerce    | La Veta .....Chamber of Commerce       | Sanford .....Boosters Club           |
| Byers .....Commercial Association    | Fort Collins ....Chamber of Commerce | Leadville .....Chamber of Commerce     | San Luis .....Chamber of Commerce    |
| Canon City .....Chamber of Commerce  | Ft. Lupton...Jr. Chamber of Commerce | Limon .....Rotary Club                 | Springfield .....Chamber of Commerce |
| Carbondale .....Chamber of Commerce  | Fort Morgan ...Chamber of Commerce   | Littleton ...Civic & Commercial Assoc. | Steamboat Spgs...Chamber of Commerce |
| Cedaredge .....Lions Club            | Fruita .....Chamber of Commerce      | Longmont .....Chamber of Commerce      | Sterling .....Chamber of Commerce    |
| Cheyenne Wells..Chamber of Commerce  | Georgetown .....Civic Association    | Loveland .....Chamber of Commerce      | Stratton .....Rotary Club            |
| Colorado Spgs..Chamber of Commerce   | Glenwood Spgs..Chamber of Commerce   | Lyons .....Commercial Association      | Sugar City .....Service Club         |
| Cortez .....Chamber of Commerce      | Golden .....Chamber of Commerce      | Mancos .....Chamber of Commerce        | Swink .....Chamber of Commerce       |
| Craig .....Chamber of Commerce       | Granada .....Promotion Club          | Manzanola .....Commerce Club           | Trinidad .....Chamber of Commerce    |
| Creede .....Chamber of Commerce      | Grand Junction..Chamber of Commerce  | Meeker .....Commercial Club            | Walsenburg ....Chamber of Commerce   |
| Crested Butte .....Lions Club        | Grand Lake .....Chamber of Commerce  | Milliken .....Community Club           | Wellington .....Commercial Club      |
| DeBeque .....Chamber of Commerce     | Greeley .....Chamber of Commerce     | Monte Vista .....Commercial Club       | Westcliffe .....Chamber of Commerce  |
| Del Norte .....Chamber of Commerce   | Gunnison .....Chamber of Commerce    | Montrose .....Chamber of Commerce      | Wiley .....Commercial Club           |
| Delta .....Chamber of Commerce       | Haxtun .....Commercial Club          | Nucla .....Chamber of Commerce         | Wray .....Commercial Club            |
| Denver..Convention & Visitors Bureau |                                      |  | Yuma .....Chamber of Commerce        |





## CALENDAR OF COLORADO EVENTS

### JANUARY

Annual Seed Show ..... Colorado Springs  
 National Western Stock Show & Rodeo ..... Denver  
 Ski Events ..... Berthoud Pass  
 Ski Events ..... Winter Park

### FEBRUARY

Intercollegiate Ski Races ..... Winter Park  
 Ski Association Championship Races ..... Aspen  
 Annual Winter Carnival ..... Steamboat Springs  
 Junior Ski Races ..... Steamboat Springs  
 Downhill and Slalom Ski Races ..... Gunnison

### MARCH

Downhill Ski Races ..... Winter Park  
 Junior Slalom Ski Races ..... Loveland Pass  
 Downhill and Slalom Ski Races ..... Loveland Pass  
 Roche Cup Ski Races ..... Aspen

### APRIL

Pikes Peak Ski Races ..... Colorado Springs  
 Easter Sunrise Service, Red Rocks ..... Denver  
 Easter Sunrise Service, Garden of Gods ..... Colorado Springs  
 Peach Blossom Week ..... Grand Junction  
 Western Colorado Music Festival ..... Grand Junction  
 Cousin Jack Ski Races ..... Aspen  
 Sports and Vacation Show ..... Denver

### MAY

Blossom Festival ..... Canon City  
 Annual Santa Fe Trail Day ..... Las Animas  
 May Day Slalom Ski Races ..... Berthoud Pass  
 Opening of Radium Springs Pool ..... Ouray  
 Spring Wild Flower Week ..... Grand Junction  
 State High School Track Meet ..... Boulder  
 Opening of Fishing Season ..... State-wide

### JUNE

Giant Slalom Ski Races ..... Aspen  
 Rodeo and Race Meet ..... Walsenburg  
 Trail Ride ..... Canon City  
 Royal Gorge Round-Up ..... Canon City  
 Strawberry Day ..... Glenwood Springs  
 Koshare Indian Ceremonials ..... La Junta

### JULY

Days of '49 ..... Salida  
 Chautauqua ..... Boulder  
 Polo Tournament ..... Colorado Springs  
 Spud Rodeo ..... Greeley  
 Rodeo ..... Brush  
 Annual Free Rodeo ..... Steamboat Springs  
 Junior Rodeo ..... Fort Collins  
 Water Carnival ..... Ouray  
 Annual 4th of July Celebration ..... Longmont  
 Range Call Rodeo ..... Meeker  
 Play Festival ..... Central City  
 City Park Band Concerts & Lighted Fountain Displays.....Denver  
 Trail Riders of the Wilderness ..... Central Colorado

Post Summer Opera ..... Denver  
 Cattlemen's Day Rodeo ..... Gunnison  
 Ice Review ..... Colorado Springs  
 Pow Wow Days and Rodeo ..... Boulder  
 Ski-Hi Stampede ..... Monte Vista  
 Fireworks Display ..... Denver

### AUGUST

Polo Tournament ..... Colorado Springs  
 Chautauqua ..... Boulder  
 City Park Band Concerts & Lighted Fountain Displays.....Denver  
 Trail Riders of Wilderness ..... Central Colorado  
 Rodeo ..... Grand Lake  
 Spanish Trails Fiesta Rodeo ..... Durango  
 Rooftop Roundup Rodeo ..... Estes Park  
 Arapahoe Glacier Hike ..... Boulder  
 Holy Cross Indian Pageant ..... Canon City  
 Lipton Cup Regatta ..... Grand Lake  
 Washington County Fair ..... Akron  
 Colorado Springs Rodeo ..... Colorado Springs  
 Kids Rodeo ..... La Junta  
 Head Lettuce Days and Rodeo ..... Buena Vista  
 Logan County Fair and Rodeo ..... Sterling  
 Boulder County Fair and Rodeo ..... Longmont  
 Colorado State Fair ..... Pueblo  
 Peach Week ..... Grand Junction  
 Rodeo ..... Grand Junction

### SEPTEMBER

Pikes Peak Auto Races ..... Colorado Springs  
 Range and Ranch Show ..... Ouray  
 Arkansas Valley Fair ..... Rocky Ford  
 Watermelon Day ..... Rocky Ford  
 Open Golf Tournament ..... Denver  
 Kit Carson Roundup ..... Trinidad  
 Rott County Fair ..... Hayden  
 Mexican Independence Day Fiesta ..... Denver  
 Grand Mesa National Forest Fall Color Week.....Grand Junction  
 Harvest Festival ..... Nunn  
 Lincoln County Fair ..... Hugo  
 Montezuma County Fair ..... Cortez  
 Garfield County Fair ..... Rifle

### OCTOBER

Harvest Festival ..... Las Animas  
 San Luis Valley Seed Show ..... Del Norte  
 Delta County Fair ..... Hotchkiss  
 San Juan Basin Fair, Seed, Poultry & Livestock Show.....Durango  
 Opening of Big Game Season ..... State-wide

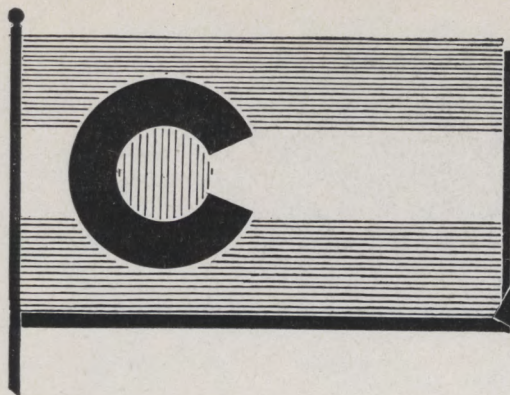
### NOVEMBER

Opening of Ski Season ..... High Altitude Areas  
 Civic Symphony Concerts (thru April) ..... Denver

### DECEMBER

Christmas Decoration Exhibit ..... Denver  
 Yule Log Ceremony ..... Palmer Lake  
 Pike's Peak New Year's Eve Fireworks ..... Colorado Springs  
 Days of '49 ..... Canon City  
 Novice Ski Races ..... Berthoud Pass  
 Ski Races and Jumping ..... Aspen





## EMBLEMS OF STATE

**COLORADO**—State named for the Colorado River; river so named because of its brownish-red color (?); from Spanish, *colorado*, colored, ruddy or red (the river must have been named at flood-stage, since the water is clear at other seasons.—Ed.).

**NICKNAME**—Centennial State; Silver State; because of its mountains, long known as the Switzerland of America, and more recently as the Top of the Nation.

**FLAG**—Three equal stripes, two blue and a white; at left, a red letter "C" encircling a golden disk; width, two-thirds of length. Adopted in 1911.

**GREAT SEAL**—Heraldic shield with snow-capped peaks and miner's device; fasces bear words, "Union and Constitution"; crest holds eye of God. Adopted in 1877.

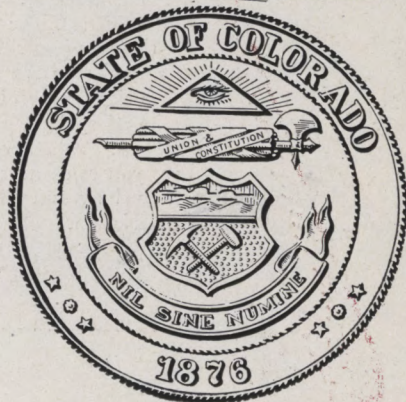
**MOTTO**—*Nil Sine Numine*: Nothing without Providence (or Deity); corruption of a line from Virgil's Aeneid; adopted in 1861 for the territorial seal.

**FLOWER**—The white and lavender (Rocky Mountain) Columbine (*Aquilegia caerulea*); flower is protected by law in Colorado on all public lands. Adopted in 1899.

**BIRD**—Lark Bunting (*Calamospiza melanocorys Stejneger*); native of western United States east of Rockies; averages seven inches long; winters in Mexico; male bird has black plumage during mating season; color later changes to gray streaked with brown like that of female; sings in flight. Adopted in 1931.

**SONG**—"Where the Columbines Grow"; words and music by Arthur J. Fynn of Denver. Adopted in 1915.

**TREE**—Colorado Blue Spruce (*Pecea pungens*); identification—cones, three inches long; bark of mature tree is furrowed; zone, below 9,000 feet; height, up to 100 feet; diameter, up to two feet; needles, stiff, sharp, four-sided; new growth more bluish than older foliage. Adopted in 1939.





RECEIVED

JAN 05 2017

STATE PUBLICATIONS  
Colorado State Library

## *Top of the Nation*

Colorado's full of more good vacation ideas than you could shake a guidebook at. There are fifty-one 14,000-foot peaks, and whether you climb them or not they'll take your breath. You won't need to stand in line to fish—there are six thousand miles of trout streams and uncounted thousands of lakes. When you hunt, you won't need a bullet-proof vest—there's plenty of room, plenty of game. You can swim in pools fed by hot springs or splash around at the foot of a glacier. You can ride the range with handsome dudes or with the real McCoy; or you can loaf in a chair at a mountain lodge and dream about covered-wagon days. You can live alone in dark evergreen forests or rhumba around at de luxe resorts. Come winter, you can "gelandesprung" with the best of them or just ride up and down the ski tow in the sunshine. Colorado has everything—hair-raising cliffs and gorges, sand dunes, prairies, peaceful valleys. There are national parks and forests, mineral springs, ghost towns, ancient cliff-dwellings, living Indian villages. Whether you come to play, to relax, to explore, or to live, you can't miss in Colorado. It's Nature's World's Fair with a new show every hour. It's the summer and winter playground of the Nation.

*Colorado Is Tops*