

**YUMA COUNTY**  
COLORADO



2023

# YUMA COUNTY PROPERTY ASSESSMENT STUDY

---





September 15, 2023

Ms. Natalie Castle  
Director of Research  
Colorado Legislative Council  
Room 029, State Capitol Building  
Denver, Colorado 80203

**RE: Final Report for the 2023 Colorado Property Assessment Study**

Dear Ms. Castle:

East West Econometrics - Audit Division is pleased to submit the Final Reports for the 2023 Colorado Property Assessment Study.

These reports are the result of two analyses: A procedural audit and a statistical audit.

The procedural audit examines all classes of locally assessed property. It specifically looks at how the assessor develops economic areas, confirms and qualifies sales, develops time adjustments and performs periodic physical property inspections. The audit reviews the procedures for determining subdivision absorption and subdivision discounting. Valuation methodology is examined for residential properties and commercial properties. Procedures are reviewed for producing mines, oil and gas leaseholds and lands producing, producing coal mines, producing earth and stone products, severed mineral interests, and non-producing patented mining claims.

Statistical audits are performed on vacant land, residential properties, commercial/industrial properties and agricultural land. A statistical analysis is performed for personal property compliance on the eleven largest counties: Adams, Arapahoe, Boulder, Denver, Douglas, El Paso, Jefferson, Larimer, Mesa, Pueblo and Weld. The remaining counties receive a personal property procedural study.

East West Econometrics – Audit Division appreciates the opportunity to be of service to the State of Colorado. Please contact us with any questions or concerns.

A handwritten signature in black ink that reads "Harry J. Fuller".

Harry J. Fuller  
Project Manager  
East West Econometrics – Audit Division

## TABLE OF CONTENTS

Introduction .....	3
Regional/Historical Sketch of Yuma County .....	4
Ratio Analysis.....	6
Time Trending Verification .....	8
Sold/Unsold Analysis .....	9
Agricultural Land Study .....	11
<i>Agricultural Land</i> .....	11
<i>Agricultural Outbuildings</i> .....	12
<i>Agricultural Land Under Improvements</i> .....	13
Sales Verification.....	14
Economic Area Review and Evaluation .....	16
Natural Resources .....	17
<i>Earth and Stone Products</i> .....	17
<i>Producing Oil and Gas</i> .....	17
Vacant Land.....	18
Possessory Interest Properties .....	19
Personal Property Audit .....	20
East West Econometrics Auditor Staff.....	22
STATISTICAL APPENDIX .....	23

# INTRODUCTION

---



## Colorado

The State Board of Equalization (SBOE) reviews assessments for conformance to the Constitution. The SBOE will order revaluations for counties whose valuations do not reflect the proper valuation period level of value.

The statutory basis for the audit is found in C.R.S. 39-1-104 (16)(a)(b) and (c).

The legislative council sets forth two criteria that are the focus of the audit group:

To determine whether each county assessor is applying correctly the constitutional and statutory provisions, compliance requirements of the State Board of Equalization, and the manuals published by the State Property Tax Administrator to arrive at the actual value of each class of property.

To determine if each assessor is applying correctly the provisions of law to the actual values when arriving at valuations for assessment of all locally valued properties subject to the property tax.

The property assessment audit conducts a two-part analysis: A procedural analysis and a statistical analysis.

The procedural analysis includes all classes of property and specifically looks at how the assessor develops economic areas, confirms and qualifies sales, and develops time adjustments. The audit also examines the procedures for adequately discovering, classifying and valuing agricultural outbuildings, discovering subdivision build-out and subdivision discounting procedures. Valuation methodology for vacant land, improved residential properties and commercial properties is examined. Procedures for producing mines, oil and gas leaseholds and lands producing, producing coal mines, producing earth and stone products, severed mineral interests and non-producing patented mining claims are also reviewed.

Statistical analysis is performed on vacant land, residential properties, commercial industrial properties, agricultural land, and personal property. The statistical study results are compared with State Board of Equalization compliance requirements and the manuals published by the State Property Tax Administrator.

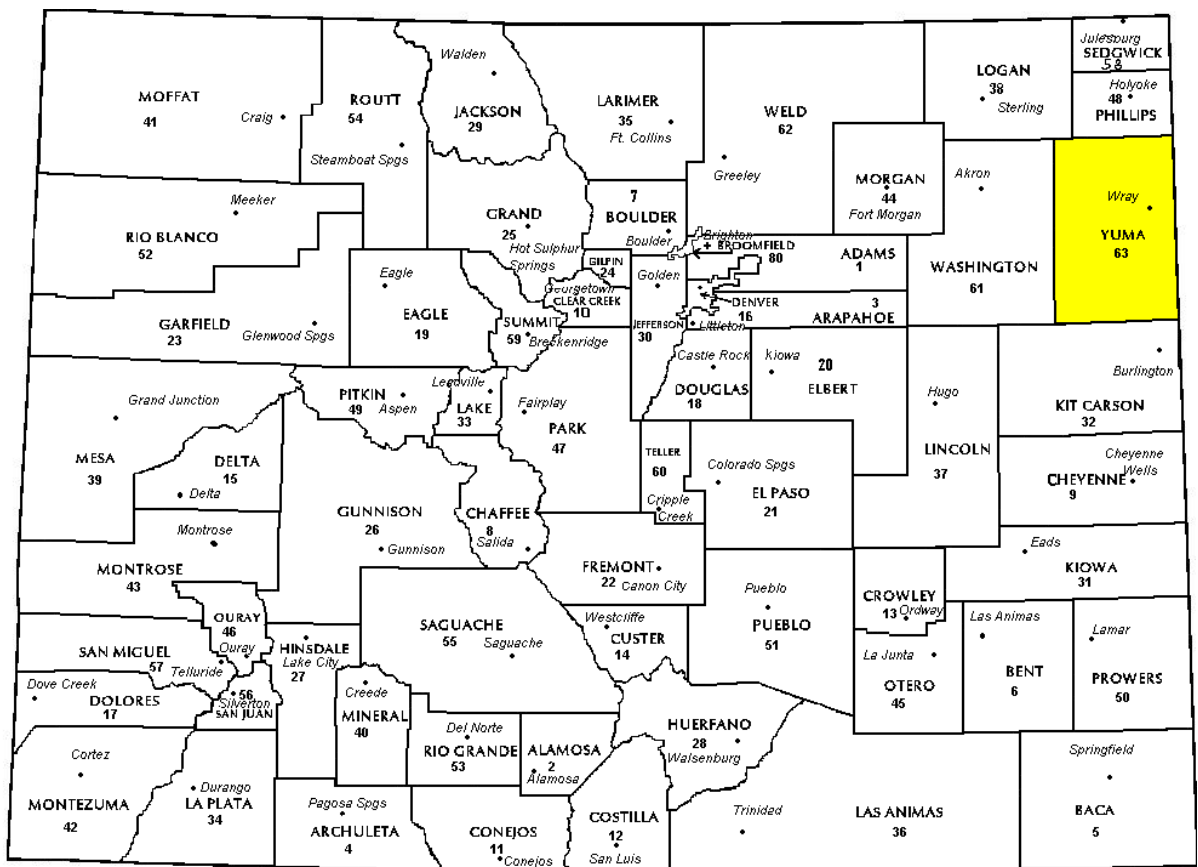
East West Econometrics Audit has completed the Property Assessment Study for 2023 and is pleased to report its findings for Yuma County in the following report.

# REGIONAL/HISTORICAL SKETCH OF YUMA COUNTY

## Regional Information

Yuma County is located in the Eastern Plains region of Colorado. The Eastern Plains of Colorado refer to the region on the east side of the Rocky Mountain. It is east of the population centers of the Front Range,

including Baca, Bent, Cheyenne, Crowley, Elbert, Kiowa, Kit Carson, Lincoln, Logan, Morgan, Otero, Phillips, Prowers, Sedgwick, Washington, and Yuma counties.



## Historical Information

Yuma County has approximately 2,518 square miles and an estimated population of approximately 4,908 people with 1.9 people per square mile, according to the U.S. Census Bureau's 2020 estimated census data. This represents a 2.0 percent change from April 1, 2010 to July 1, 2019.

Yuma County was formed in 1889 from a portion of Washington County and is located on the Northeastern Colorado Plains with Nebraska and Kansas at its border. The County Seat resides in Wray, which was named an "All-America City" in 1993 by the National Civic League. The County offers moderate summers, crisp falls, cool winters and warm springs. The county averages 260 days of sunshine and 16.7" of annual rainfall.

Yuma County offers many opportunities for recreation. Boating and fishing are popular. Ponds, lakes and rivers are abundant, as is the wildlife. Hunters and nature lovers can see wild turkey, pheasant and deer. Visitors from all over come to Wray to view the unusual mating ritual of the Greater Prairie Chicken. Once an endangered species, the Greater Prairie Chicken has made a comeback in Northeast Colorado.

The Wray museum has a fine Smithsonian exhibit of an ancient buffalo hunt as well as Indian and prehistoric artifacts. History buffs can visit the Beecher Island Battleground, the site of one of the most bitter battles in the Indian Wars between Cheyenne Dog Soldiers and the US Cavalry.

*([www.northeastrpd.org](http://www.northeastrpd.org), [www.yumacounty.net](http://www.yumacounty.net),  
[www.wikipedia.org](http://www.wikipedia.org))*

# RATIO ANALYSIS

## Methodology

All significant classes of property were analyzed. Sales were collected for each property class over the eighteen month period from January 1, 2021 through June 30th, 2022. Property classes with less than thirty sales had the sales period extended in six month increments up to an additional forty-two months. If this extended sales period did not produce the minimum thirty qualified sales, the Audit performed supplemental appraisals to reach the minimum.

Although it was required that we examine the median and coefficient of dispersion for all counties, we also calculated the weighted mean and price-related differential for each class of property. Counties were not passed or failed by these latter measures, but were counseled if there were anomalies noted during our analysis. Qualified sales were based on the qualification code used by each county, which were typically coded as either “Q” or “C.” The ratio analysis included all sales. The data was trimmed for counties with obvious outliers using IAAO standards for data analysis. In

every case, we examined the loss in data from trimming to ensure that only true outliers were excluded. Any county with a significant portion of sales excluded by this trimming method was examined further. No county was allowed to pass the audit if more than 5% of the sales were “lost” because of trimming.

All sixty-four counties were examined for compliance on the economic area level. Where there were sufficient sales data, the neighborhood and subdivision levels were tested for compliance. Although counties are determined to be in or out of compliance at the class level, non-compliant economic areas, neighborhoods and subdivisions (where applicable) were discussed with the Assessor.

**Data on the individual economic areas, neighborhoods and subdivisions are found in the STATISTICAL APPENDIX.**

## Conclusions

For this final analysis report, the minimum acceptable statistical standards allowed by the State Board of Equalization are:

ALLOWABLE STANDARDS RATIO GRID		
Property Class	Unweighted Median Ratio	Coefficient of Dispersion
Commercial/Industrial	Between .95-1.05	Less than 20.99
Residential Condominium	Between .95-1.05	Less than 15.99
Residential	Between .95-1.05	Less than 15.99
Vacant Land	Between .95-1.05	Less than 20.99

The results for Yuma County are:

Yuma County Ratio Grid						
Property Class	Number of Qualified Sales	Unweighted Median Ratio	Price Related Differential	Coefficient of Dispersion	Time Trend Analysis	
Commercial/Industrial	43	1.020	1.018	16.8	Compliant	
Residential	172	0.985	1.007	12.4	Compliant	
Vacant Land	N/A	N/A	N/A	N/A	N/A	

After applying the above described methodologies, it is concluded from the sales ratios that Yuma County is in compliance with

SBOE, DPT, and Colorado State Statute valuation guidelines.

**Recommendations**

None



# TIME TRENDING VERIFICATION

## Methodology

While we recommend that counties use the inverted ratio regression analysis method to account for market (time) trending, some counties have used other IAAO-approved methods, such as the weighted monthly median approach. We are not auditing the methods used, but rather the results of the methods used. Given this range of methodologies used to account for market trending, we concluded that the best validation method was to examine the sale ratios for each class across the appropriate sale period. To be specific, if a county has considered and adjusted correctly for market trending, then the sale ratios should remain stable (i.e. flat) across the sale period. If a residual market trend is detected, then the county may or may not have addressed market

trending adequately, and a further examination is warranted. This validation method also considers the number of sales and the length of the sale period. Counties with few sales across the sale period were carefully examined to determine if the statistical results were valid.

## Conclusions

After verification and analysis, it has been determined that Yuma County has complied with the statutory requirements to analyze the effects of time on value in their county. Yuma County has also satisfactorily applied the results of their time trending analysis to arrive at the time adjusted sales price (TASP).

## Recommendations

None

# SOLD / UNSOLD ANALYSIS

## Methodology

Yuma County was tested for the equal treatment of sold and unsold properties to ensure that “sales chasing” has not occurred. The auditors employed a multi-step process to determine if sold and unsold properties were valued in a consistent manner.

We test the hypothesis that the assessor has valued unsold properties consistent with what is observed with the sold properties based on several units of comparison and tests. The units of comparison include the actual value per square foot and the change in value from the previous base year period to the current base year. The first test compares the actual value per square foot between sold and unsold properties by class. The median and mean value per square foot is compared and tested for any significant difference. This is tested using non-parametric methods, such as the Mann-Whitney test for differences in the distributions or medians between sold and unsold groups. It is also examined graphically and from an appraisal perspective. Data can be stratified based on location and subclass. The second test compares the difference in the median change in value from the previous base year to the current base year between sold and unsold properties by class. The same combination of non-parametric and appraisal testing is used as with the first test. A third test employing a valuation model testing a sold/unsold binary variable while controlling for property attributes such as location, size, age and other attributes. The model determines if the sold/unsold variable is statistically and empirically significant. If all three tests indicate a significant difference between sold and unsold properties for a given class, the Auditor may meet with the county to determine if sale chasing is actually occurring,

or if there are other explanations for the observed difference.

If the unsold properties have a higher median value per square foot than the sold properties, or if the median change in value is greater for the unsold properties than the sold properties, the analysis is stopped and the county is concluded to be in compliance with sold and unsold guidelines. All sold and unsold properties in a given class are first tested, although properties with extreme unit values or percent changes can be trimmed to stabilize the analysis. The median is the primary comparison metric, although the mean can also be used as a comparison metric if the distribution supports that type of measure of central tendency.

The first test (unit value method) is applied to both residential and commercial/industrial sold and unsold properties. The second test is applied to sold and unsold vacant land properties. The second test (change in value method) is also applied to residential or commercial sold and unsold properties if the first test results in a significant difference observed and/or tested between sold and unsold properties. The third test (valuation modeling) is used in instances where the results from the first two tests indicate a significant difference between sold and unsold properties. It can also be used when the number of sold and unsold properties is so large that the non-parametric testing is indicating a false rejection of the hypothesis that there is no difference between the sold and unsold property values.

These tests were supported by both tabular and graphics presentations, along with written documentation explaining the methodology used.

<b>Sold/Unsold Results</b>	
<b>Property Class</b>	<b>Results</b>
Commercial/Industrial	Compliant
Residential	Compliant
Vacant Land	N/A

### **Conclusions**

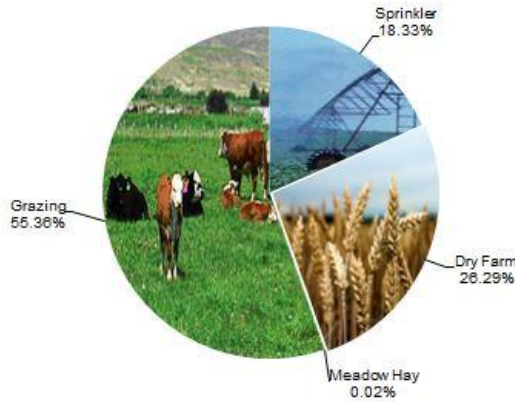
After applying the above described methodologies, it is concluded that Yuma County is reasonably treating its sold and unsold properties in the same manner.

### **Recommendations**

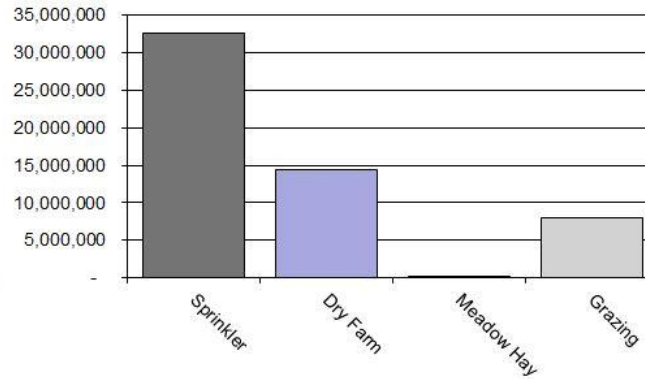
None

# AGRICULTURAL LAND STUDY

Acres By Subclass



Value By Subclass



## Agricultural Land

County records were reviewed to determine major land categories such as irrigated farm, dry farm, meadow hay, grazing and other lands. In addition, county records were reviewed in order to determine if: Aerial photographs are available and are being used; soil conservation guidelines have been used to classify lands based on productivity; crop rotations have been documented; typical commodities and yields have been determined; orchard lands have been properly classified and valued; expenses reflect a ten year average and are typical landlord expenses; grazing lands have been properly classified and valued; the number of acres in each class and subclass have been determined; the capitalization rate was properly applied. Also, documentation was required for the valuation methods used and any locally developed yields, carrying capacities, and expenses. Records were also checked to ensure that the commodity prices and expenses, furnished by the Property Tax Administrator (PTA), were applied properly.

(See Assessor Reference Library Volume 3 Chapter 5.)

### Conclusions

An analysis of the agricultural land data indicates an acceptable appraisal of this property type. Directives, commodity prices and expenses provided by the PTA were properly applied. County yields compared favorably to those published by Colorado Agricultural Statistics. Expenses used by the county were allowable expenses and were in an acceptable range. Grazing lands carrying capacities were in an acceptable range. The data analyzed resulted in the following ratios:

Yuma County Agricultural Land Ratio Grid						
Abstract Code	Land Class	Number Of Acres	County Value Per Acre	County Assessed Total Value	WRA Total Value	Ratio
4107	Sprinkler	265,467	123.01	32,655,486	32,007,936	1.02
4127	Dry Farm	380,656	37.88	14,421,127	14,419,600	1.00
4137	Meadow Hay	349	39.19	13,679	13,679	1.00
4147	Grazing	801,694	10.07	8,072,207	8,072,207	1.00
<b>Total/Avg</b>		<b>1,448,166</b>	<b>38.09</b>	<b>55,162,500</b>	<b>54,513,423</b>	<b>1.01</b>

### Recommendations

None

## Agricultural Outbuildings

### Methodology

Data was collected and reviewed to determine if the guidelines found in the Assessor's Reference Library (ARL) Volume 3, pages 5.74 through 5.77 were being followed.

Property Taxation for the valuation of agricultural outbuildings.

### Recommendations

None

### Conclusions

Yuma County has substantially complied with the procedures provided by the Division of

---

## Agricultural Land Under Improvements

---

### Methodology

Data was collected and reviewed to determine if the guidelines found in the Assessor's Reference Library (ARL) Volume 3, pages 5.19 and 5.20 were being followed.

### Conclusions

Yuma County has used the following methods to discover land under a residential improvement on a farm or ranch that is determined to be not integral under 39-1-102, C.R.S.:

- Questionnaires
- Field Inspections
- Phone Interviews
- In-Person Interviews with Owners/Tenants
- Personal Knowledge of Occupants at Assessment Date

Yuma County has used the following methods to discover the land area under a residential improvement that is determined to be not integral under 39-1-102, C.R.S.:

- Questionnaires
- Field Inspections
- Phone Interviews
- In-Person Interviews with Owners/Tenants
- Personal Knowledge of Occupants at Assessment Date

Yuma County has substantially complied with the procedures provided by the Division of Property Taxation for the valuation of land under residential improvements that may or may not be integral to an agricultural operation.

### Recommendations

None

## SALES VERIFICATION

According to Colorado Revised Statutes:

*A representative body of sales is required when considering the market approach to appraisal.*

*(8) In any case in which sales prices of comparable properties within any class or subclass are utilized when considering the market approach to appraisal in the determination of actual value of any taxable property, the following limitations and conditions shall apply:*

*(a)(I) Use of the market approach shall require a representative body of sales, including sales by a lender or government, sufficient to set a pattern, and appraisals shall reflect due consideration of the degree of comparability of sales, including the extent of similarities and dissimilarities among properties that are compared for assessment purposes. In order to obtain a reasonable sample and to reduce sudden price changes or fluctuations, all sales shall be included in the sample that reasonably reflect a true or typical sales price during the period specified in section 39-1-104 (10.2). Sales of personal property exempt pursuant to the provisions of sections 39-3-102, 39-3-103, and 39-3-119 to 39-3-122 shall not be included in any such sample.*

*(b) Each such sale included in the sample shall be coded to indicate a typical, negotiated sale, as screened and verified by the assessor. (39-1-103, C.R.S.)*

*The assessor is required to use sales of real property only in the valuation process.*

*(8)(f) Such true and typical sales shall include only those sales which have been determined on an individual basis to reflect the selling price of the real property only or which have been adjusted on an individual basis to reflect the selling price of the real property only. (39-1-103, C.R.S.)*

Part of the Property Assessment Study is the sales verification analysis. WRA has used the above-cited statutes as a guide in our study of the county's procedures and practices for verifying sales.

EWE reviewed the sales verification procedures in 2023 for Yuma County. This study was conducted by checking selected sales from the master sales list for the current valuation period. Specifically EWE selected 43 sales listed as unqualified.

All of the sales in the unqualified sales sample had reasons that were clear and supportable.

For residential, commercial, and vacant land sales with considerations over \$100,000, the contractor has examined and reported the ratio of qualified sales to total sales by class and performed the following analyses of unqualified sales:

The contractor has examined the manner in which sales have been classified as qualified or unqualified, including a listing of each step in the sales verification process, any adjustment procedures, and the county official responsible for making the final decision on qualification.

When less than 50 percent of sales are qualified in any of the three property classes (residential, commercial, and vacant land), the contractor analyzed the reasons for disqualifying sales in any subclass that constitutes at least 20 percent of the class, either by number of properties or by value, from the prior year. The contractor has reviewed with the assessor any analysis indicating that sales data are

inadequate, fail to reflect typical properties, or have been disqualified for insufficient cause. In addition, the contractor has reviewed the disqualified sales by assigned code. If there appears to be any inconsistency in the coding, the contractor has conducted further analysis to determine if the sales included in that code have been assigned appropriately.

If 50 percent or more of the sales are qualified, the contractor has reviewed a statistically significant sample of unqualified sales, excluding sales that were disqualified for obvious reasons.

The following subclasses were analyzed for Yuma County:

0100 Residential Lots

### **Conclusions**

Yuma County appears to be doing an adequate job of verifying their sales. EWE agreed with the county's reason for disqualifying each of the sales selected in the sample. There are no recommendations or suggestions.

### **Recommendations**

None



# ECONOMIC AREA REVIEW AND EVALUATION

## **Methodology**

Yuma County has submitted a written narrative describing the economic areas that make up the county's market areas. Yuma County has also submitted a map illustrating these areas. Each of these narratives have been read and analyzed for logic and appraisal sensibility. The maps were also compared to the narrative for consistency between the written description and the map.

## **Conclusions**

After review and analysis, it has been determined that Yuma County has adequately

identified homogeneous economic areas comprised of smaller neighborhoods. Each economic area defined is equally subject to a set of economic forces that impact the value of the properties within that geographic area and this has been adequately addressed. Each economic area defined adequately delineates an area that will give "similar values for similar properties in similar areas."

## **Recommendations**

None

# NATURAL RESOURCES

---

## Earth and Stone Products

---

### Methodology

Under the guidelines of the Assessor's Reference Library (ARL), Volume 3, Natural Resource Valuation Procedures, the income approach was applied to determine value for production of earth and stone products. The number of tons was multiplied by an economic royalty rate determined by the Division of Property Taxation to determine income. The income was multiplied by a recommended Hoskold factor to determine the actual value. The Hoskold factor is determined by the life of the reserves or the lease. Value is based on two variables: life and tonnage. The operator determines these since there is no other means to obtain production data through any state or private agency.

### Conclusions

The County has applied the correct formulas and state guidelines to earth and stone production.

### Recommendations

None

---

## Producing Oil and Gas

---

### Methodology

Assessors Reference Library (ARL) Volume 3, Chapter 6: Valuation of Natural Resources

### STATUTORY REFERENCES

Section § 39-1-103, C.R.S., specifies that producing oil or gas leaseholds and lands are valued according to article 7 of title 39, C.R.S. Actual value determined - when.

(2) The valuation for assessment of leaseholds and lands producing oil or gas shall be determined as provided in article 7 of this title. § 39-1-103, C.R.S.

Article 7 covers the listing, valuation, and assessment of producing oil and gas leaseholds and lands.

### Valuation:

#### Valuation for assessment.

(1) Except as provided in subsection (2) of this section, on the basis of the information contained in such statement, the assessor shall value such oil and gas leaseholds and lands for assessment, as real property, at an amount equal to eighty-seven and one-half percent of:

(a) The selling price of the oil or gas sold there from during the preceding calendar year, after excluding the selling price of all oil or gas delivered to the United States government or any agency thereof, the state of Colorado or any agency thereof, or any political subdivision of the state as royalty during the preceding calendar year;

(b) The selling price of oil or gas sold in the same field area for oil or gas transported from the premises which is not sold during the preceding calendar year, after excluding the selling price of all oil or gas delivered to the United States government or any agency thereof, the state of Colorado or any agency thereof, or any political subdivision of the state as royalty during the preceding calendar year. § 39-7-102, C.R.S.

### Conclusions

The county applied approved appraisal procedures in the valuation of oil and gas.

### Recommendations

None

# VACANT LAND

## **Subdivision Discounting**

Subdivisions were reviewed in 2023 in Yuma County. The review showed that subdivisions were discounted pursuant to 39-1-103 (14) C.R.S. Discounting procedures were applied to all subdivisions where less than 80 percent of vacant land parcels were sold. An absorption rate was estimated for each discounted subdivision. An appropriate discount rate was developed using the Summation Method,

following Division of Property Taxation guidelines.

## **Conclusions**

Yuma County has implemented proper procedures to adequately estimate absorption periods, discount rates, and lot values for qualifying subdivisions.

## **Recommendations**

None

# POSSESSORY INTEREST PROPERTIES

## Possessory Interest

Possessory interest property discovery and valuation is described in the Assessor's Reference Library (ARL) Volume 3 section 7 in accordance with the requirements of Chapter 39-1-103 (17)(a) (II) C.R.S. Possessory Interest is defined by the Property Tax Administrator's Publication ARL Volume 3, Chapter 7: A private property interest in government-owned property or the right to the occupancy and use of any benefit in government-owned property that has been granted under lease, permit, license, concession, contract, or other agreement.

Yuma County has been reviewed for their procedures and adherence to guidelines when assessing and valuing agricultural and

commercial possessory interest properties. The county has also been queried as to their confidence that the possessory interest properties have been discovered and placed on the tax rolls.

## Conclusions

Yuma County has implemented a discovery process to place possessory interest properties on the roll. They have also correctly and consistently applied the correct procedures and valuation methods in the valuation of possessory interest properties.

## Recommendations

None

## PERSONAL PROPERTY AUDIT

Yuma County was studied for its procedural compliance with the personal property assessment outlined in the Assessor's Reference Library (ARL) Volume 5, and in the State Board of Equalization (SBOE) requirements for the assessment of personal property. The SBOE requires that counties use ARL Volume 5, including current discovery, classification, documentation procedures, current economic lives table, cost factor tables, depreciation table, and level of value adjustment factor table.

The personal property audit standards narrative must be in place and current. A listing of businesses that have been audited by the assessor within the twelve-month period reflected in the plan is given to the auditor. The audited businesses must be in conformity with those described in the plan.

Aggregate ratio will be determined solely from the personal property accounts that have been physically inspected. The minimum assessment sample is one percent or ten schedules, whichever is greater, and the maximum assessment audit sample is 100 schedules.

For the counties having over 100,000 population, WRA selected a sample of all personal property schedules to determine whether the assessor is correctly applying the provisions of law and manuals of the Property Tax Administrator in arriving at the assessment levels of such property. This sample was selected from the personal property schedules audited by the assessor. In no event was the sample selected by the contractor less than 30 schedules. The counties to be included in this study are Adams, Arapahoe, Boulder, Denver, Douglas, El Paso, Jefferson, Larimer, Mesa, Pueblo, and Weld. All other counties received a procedural study.

Yuma County is compliant with the guidelines set forth in ARL Volume 5 regarding discovery procedures, using the following methods to discover personal property accounts in the county:

- Public Record Documents
- MLS Listing and/or Sold Books
- Chamber of Commerce/Economic Development Contacts
- Local Telephone Directories, Newspapers or Other Local Publications
- Personal Observation, Physical Canvassing or Word of Mouth
- Questionnaires, Letters and/or Phone Calls to Buyer, Seller and/or Realtor
- Social Media
- Building Permits
- Activity Notices
- Inventories
- Declarations,
- Internet
- Colorado Business in Good Standing website

The county uses the Division of Property Taxation (DPT) recommended classification and documentation procedures. The DPT's recommended cost factor tables, depreciation tables and level of value adjustment factor tables are also used.

Yuma County submitted their personal property written audit plan and was current for the 2023 valuation period. The number and listing of businesses audited was also submitted and was in conformance with the written audit plan. The following audit triggers were used by the county to select accounts to be audited:

- Accounts with obvious discrepancies
- New businesses filing for the first time
- Incomplete or inconsistent declarations
- Accounts with omitted property
- Non-filing Accounts - Best Information Available
- Accounts close to the \$52,000 actual value exemption status
- Accounts protested with substantial disagreement

- BIA Accounts or accounts without equipment listings

### **Conclusions**

Yuma County has employed adequate discovery, classification, documentation, valuation, and auditing procedures for their personal property assessment and is in statistical compliance with SBOE requirements.

### **Recommendations**

None

# EAST WEST ECONOMETRICS AUDITOR STAFF

**Harry J. Fuller**, *Audit Project Manager*

**Suzanne Howard**, *Audit Administrative Manager*

**Steve Kane**, *Audit Statistician*

**Carl W. Ross**, *Agricultural/Natural Resource Analyst*

**J. Andrew Rodriguez**, *Field Analyst*

# STATISTICAL APPENDIX



**STATISTICAL COMPLIANCE REPORT  
FOR YUMA COUNTY  
2023**

**I. OVERVIEW**

Yuma County is an agricultural county located in eastern Colorado. The county has a total of 12,014 real property parcels, according to data submitted by the county assessor’s office in 2023. The following provides a breakdown of property classes for this county:



Based on the number of vacant land parcels in Yuma County, we were not required to analyze this class of property for audit compliance.

For residential improved properties, single family properties accounted for 95.5% of all residential properties.

Commercial and industrial properties represented a much smaller proportion of property classes in comparison. Commercial/industrial sales accounted for 2.9% of all such properties in this county.

**II. DATA FILES**

The following sales analyses were based on the requirements of the 2023 Colorado Property Assessment Study. The data included all 5 property record files as specified by the Auditor.

**III. RESIDENTIAL SALES RESULTS**

There were 174 qualified residential sales for the 18-month period ending June 30, 2022. Two sales were trimmed using IAAO standards, resulting in a total of 172 for the following analysis.

Median	<b>0.985</b>
Price Related Differential	<b>1.007</b>
Coefficient of Dispersion	<b>12.4</b>

We next stratified the sale ratio analysis by economic area. The following are the results of this stratification analysis:

**A. Economic Area  
Case Processing Summary**

		Count	Percent
ECONAREA	100.00	20	11.6%
	200.00	49	28.5%
	300.00	94	54.7%
	400.00	9	5.2%
Overall		172	100.0%
Excluded		0	
Total		172	

**Ratio Statistics for CURRTOT / TASP**

Group	Median	Price Related Differential	Coefficient of Dispersion
100.00	.974	1.006	.117
200.00	.997	.996	.115
300.00	.994	1.008	.130
400.00	.981	1.018	.102
Overall	.985	1.007	.124

All EA's were in compliance in terms of the median sale ratio and COD.

**Neighborhood Area**

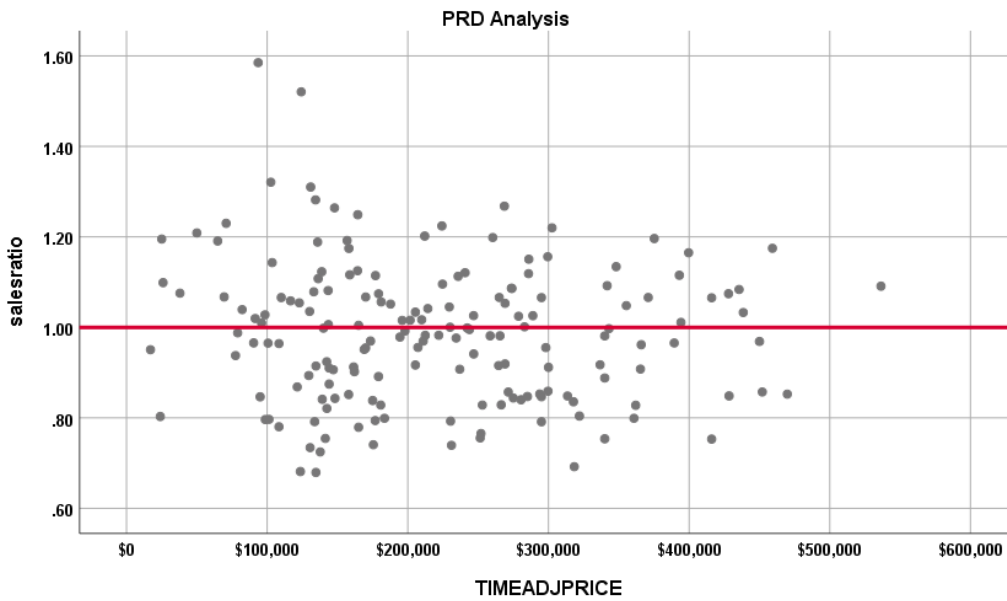
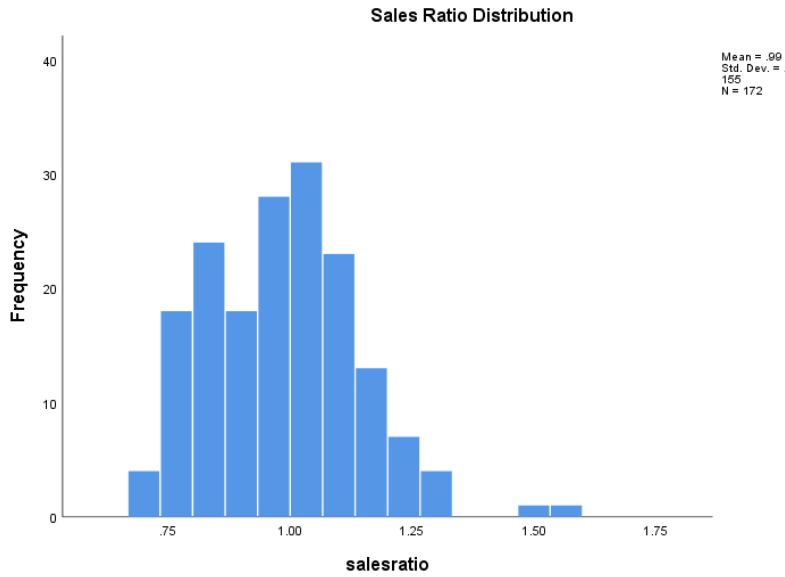
We examined all neighborhoods with at least 15 sales in terms of their median sales ratio and COD:

**Ratio Statistics for CURRTOT / TASP**

Group	Median	Price Related Differential	Coefficient of Dispersion
20050	1.020	.973	.123
30030	.987	1.002	.088
30040	1.005	1.026	.139
30050	.949	.992	.159
Overall	.998	1.002	.131

All neighborhoods with at least 15 sales were in compliance in terms of the median sales ratio and COD.

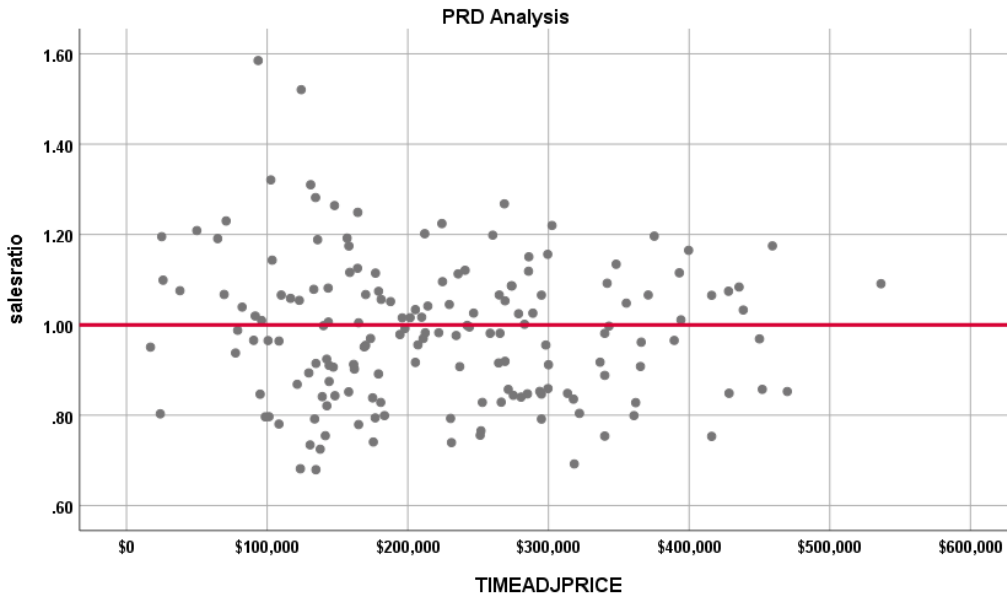
The above ratio statistics were in compliance with the standards set forth by the Colorado State Board of Equalization (SBOE) for the overall residential sales. The following graphs describe further the sales ratio distribution for all of these properties:



### Subclass 1112 PRD Analysis

We next analyzed residential properties identified as 1112 using the state abstract code system. These include single family residences, town homes and purged manufactured homes. The following indicates the distribution of sales ratios across the sale price spectrum:

### 1212 SALES



The Price-Related Differential (PRD) for 1112 sales is 1.006; this is within IAAO standards for the PRD. We also performed a regression analysis between the sales ratio and the assessor’s current value to further test for regressivity or progressivity in the residential sales valuation, as follows:

Model	Unstandardized Coefficients		Standardized Coefficients	t	Sig.
	B	Std. Error	Beta		
1	(Constant)	.925	.027	34.891	.000
	CURRTOT	.000000278	.000	.195	.012

a. Dependent Variable: salesratio

The slope of the line at 0.000000278 percent per month indicates that there is virtually no slope in the regression line; this in turn indicates that sales ratios are similar across the entire sale price array. We also stratified the sales ratio analysis by the sale price range, as follows:

### Case Processing Summary

		Count	Percent
SPRec	LT \$25K	3	1.8%
	\$25K to \$50K	3	1.8%
	\$50K to \$100K	12	7.2%
	\$100K to \$150K	34	20.5%
	\$150K to \$200K	27	16.3%
	\$200K to \$300K	53	31.9%
	Over \$300K	34	20.5%
Overall		166	100.0%
Excluded		0	
Total		166	

### Ratio Statistics for CURRTOT / TASP

Group	Median	Price Related Differential	Coefficient of Dispersion	Coefficient of Variation Median Centered
LT \$25K	.951	.993	.138	21.3%
\$25K to \$50K	1.099	.990	.040	7.2%
\$50K to \$100K	1.015	1.006	.130	20.8%
\$100K to \$150K	.919	1.003	.173	22.9%
\$150K to \$200K	.979	1.002	.114	14.0%
\$200K to \$300K	.983	1.002	.104	13.0%
Over \$300K	.975	.996	.123	14.5%
Overall	.982	1.006	.126	16.0%

The above table indicates that the sales ratio distribution was more or less consistent across the sale price range for Yuma County.

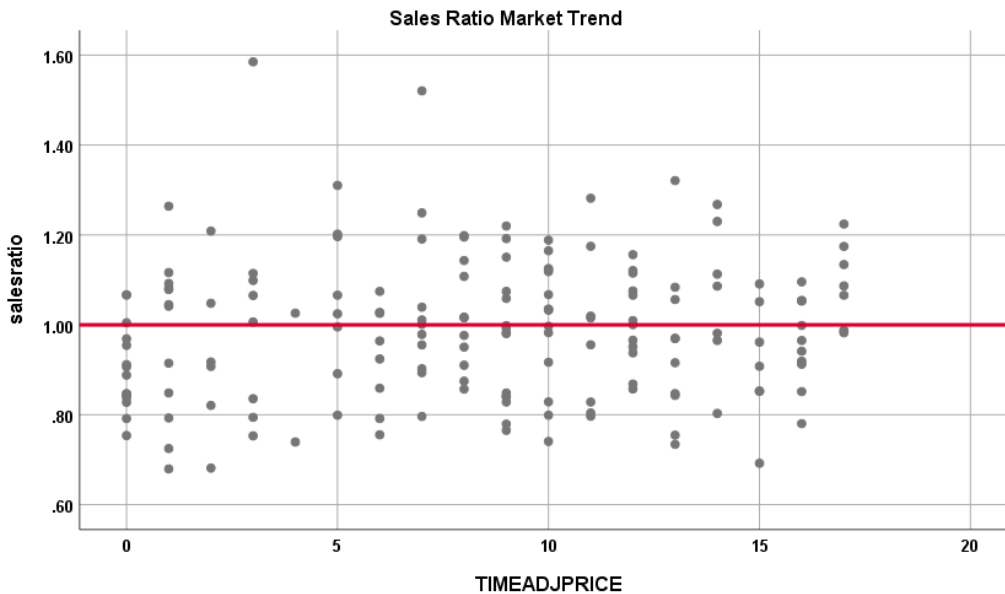
### Residential Market Trend Analysis

We next analyzed the residential dataset using the 18-month sale period, with the following results:

#### Coefficients<sup>a</sup>

Model		Unstandardized Coefficients B	Std. Error	Standardized Coefficients Beta	t	Sig.
1	(Constant)	.959	.023		42.448	.000
	SalePeriod	.003	.002	.109	1.425	.156

a. Dependent Variable: salesratio



The above analysis indicated that there was no significant market trend; therefore, we concluded that there was no significant market trending in the residential sale data.

### Sold/Unsold Analysis

In terms of the valuation consistency between sold and unsold residential properties, we compared the mean and median percent change in actual value between taxable years 2020 and 2022 for sold and unsold residential properties, as follows:

<b>Report</b>			
DIFF			
DIFF	N	Median	Mean
UNSOLD	2487	1.29	1.36
SOLD	172	1.33	1.41

Overall, the class level comparison indicated no significant difference using the change in value test.

We next stratified the comparison by economic area:

<b>Report</b>				
DIFF				
ECONAREA	DIFF	N	Median	Mean
100.00	0	489	1.33	1.40
	1	20	1.42	1.42
200.00	0	754	1.40	1.36
	1	49	1.45	1.51
300.00	0	1015	1.28	1.36
	1	94	1.30	1.37
400.00	0	199	1.12	1.19
	1	9	.97	1.20

When stratified by economic area, we noted no consistent pattern where sold and unsold properties were valued differently.

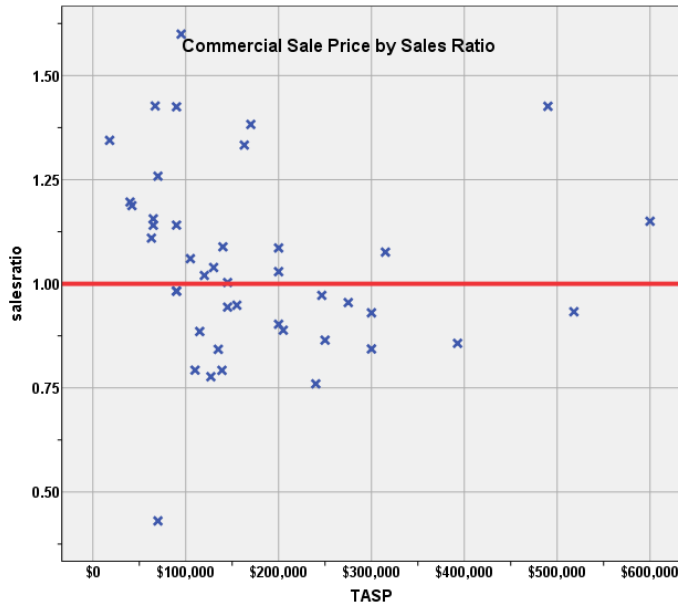
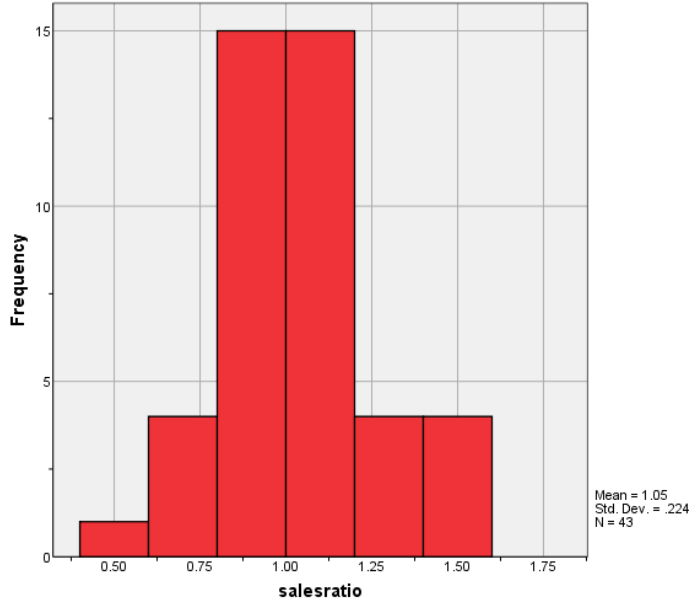
### IV. COMMERCIAL/INDUSTRIAL SALE RESULTS

There were 45 qualified commercial/industrial sales for the 48-month period ending June 30, 2022. We trimmed 2 sales using IAAO standards, resulting in 43 sales for the following analysis.

The sales ratio analysis results were as analyzed as follows:

Median	<b>1.020</b>
Price Related Differential	<b>1.018</b>
Coefficient of Dispersion	<b>16.8</b>

The above table indicates that the Yuma County commercial/industrial sale ratios were in compliance with the SBOE standards. The following histogram and scatter plot describe the sales ratio distribution further:



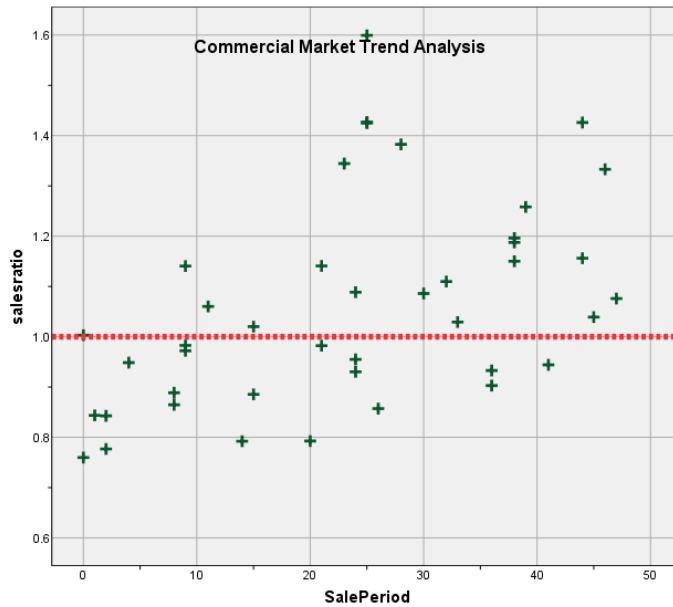
### Commercial Market Trend Analysis

The commercial sales were analyzed, examining the sale ratios across the 48-month sale period with the following results:

#### Coefficients<sup>a</sup>

Model		Unstandardized Coefficients B	Std. Error	Standardized Coefficients Beta	t	Sig.
1	(Constant)	.898	.054		16.729	.000
	SalePeriod	.007	.002	.490	3.553	.001

a. Dependent Variable: salesratio



While the above results indicated a significant trend, when stratified by subclass there were too few sales to perform a valid market trend analysis. We therefore concluded that the assessor has adequately addressed market trending in the commercial/industrial valuation in Yuma County.

### Sold/Unsold Analysis

We compared the median actual value per square foot for sold and unsold commercial properties for taxable year 2023 to determine if the assessor was valuing each group consistently. While this is a challenge to prove in this county, given the small number of sales and the overall small number and diversity of commercial/industrial properties in general, the following results indicate that both groups were valued in a consistent manner:

#### Report

VALSF			
sold	N	Median	Mean
UNSOLD	455	\$31	\$45
SOLD	43	\$41	\$50

#### Hypothesis Test Summary

	Null Hypothesis	Test	Sig.	Decision
1	The distribution of VALSF is the same across categories of sold.	Independent-Samples Mann-Whitney U Test	.029	Retain the null hypothesis.

Asymptotic significances are displayed. The significance level is .01.



As a final check, we compared the median change in value between taxable year 2020 and taxable year 2022 for commercial/industrial sold and unsold properties, as follows:

DIFF			
sold	N	Median	Mean
UNSOLD	452	1.30	1.33
SOLD	43	1.27	1.53

Both methods indicated that the assessor has values sold and unsold commercial properties consistently.

## V. CONCLUSIONS

Based on this statistical analysis, there were no significant compliance issues concluded for Yuma County as of the date of this report.

## STATISTICAL ABSTRACT

### Residential

Ratio Statistics for CURRTOT / TASP												
Mean	95% Confidence Interval for Mean		Median	95% Confidence Interval for Median			Weighted Mean	95% Confidence Interval for Weighted Mean		Price Related Differential	Coefficient of Dispersion	Coefficient of Variation Mean Centered
	Lower Bound	Upper Bound		Lower Bound	Upper Bound	Actual Coverage		Lower Bound	Upper Bound			
.987	.964	1.010	.985	.964	1.016	96.1%	.980	.957	1.003	1.007	.124	15.7%

The confidence interval for the median is constructed without any distribution assumptions. The actual coverage level may be greater than the specified level. Other confidence intervals are constructed by assuming a Normal distribution for the ratios.

### Commercial/Industrial

Ratio Statistics for CURRTOT / TASP												
Mean	95% Confidence Interval for Mean		Median	95% Confidence Interval for Median			Weighted Mean	95% Confidence Interval for Weighted Mean		Price Related Differential	Coefficient of Dispersion	Coefficient of Variation Mean Centered
	Lower Bound	Upper Bound		Lower Bound	Upper Bound	Actual Coverage		Lower Bound	Upper Bound			
1.046	.977	1.115	1.020	.944	1.110	96.8%	1.028	.951	1.104	1.018	.168	21.5%

The confidence interval for the median is constructed without any distribution assumptions. The actual coverage level may be greater than the specified level. Other confidence intervals are constructed by assuming a Normal distribution for the ratios.

### Vacant Land

Not applicable

## Residential Median Ratio Stratification

### Subclass

#### Case Processing Summary

		Count	Percent
ABSTRIMP	1212.00	166	96.5%
	1215.00	5	2.9%
	1220.00	1	0.6%
Overall		172	100.0%
Excluded		0	
Total		172	

#### Ratio Statistics for CURRTOT / TASP

Group	Median	Price Related Differential	Coefficient of Dispersion	Coefficient of Variation Median Centered
1212.00	.982	1.006	.126	16.0%
1215.00	1.035	1.005	.039	5.8%
1220.00	.941	1.000	.000	.
Overall	.985	1.007	.124	15.7%

### Age

#### Case Processing Summary

		Count	Percent
AgeRec	Over 100	37	21.5%
	75 to 100	34	19.8%
	50 to 75	45	26.2%
	25 to 50	39	22.7%
	5 to 25	14	8.1%
	5 or Newer	3	1.7%
Overall		172	100.0%
Excluded		0	
Total		172	

#### Ratio Statistics for CURRTOT / TASP

Group	Median	Price Related Differential	Coefficient of Dispersion	Coefficient of Variation Median Centered
Over 100	.951	1.013	.139	17.1%
75 to 100	1.018	.997	.114	14.8%
50 to 75	1.026	1.011	.136	18.3%
25 to 50	.965	1.009	.092	11.5%
5 to 25	1.036	.983	.114	13.9%
5 or Newer	1.001	.990	.070	11.2%
Overall	.985	1.007	.124	15.7%

## Improved Area

### Case Processing Summary

		Count	Percent
ImpSFRec	500 to 1,000 sf	9	5.2%
	1,000 to 1,500 sf	45	26.2%
	1,500 to 2,000 sf	54	31.4%
	2,000 to 3,000 sf	33	19.2%
	3,000 sf or Higher	31	18.0%
Overall		172	100.0%
Excluded		0	
Total		172	

### Ratio Statistics for CURRTOT / TASP

Group	Median	Price Related Differential	Coefficient of Dispersion	Coefficient of Variation Median Centered
500 to 1,000 sf	.915	1.026	.152	19.4%
1,000 to 1,500 sf	.965	1.018	.108	13.4%
1,500 to 2,000 sf	1.011	1.020	.133	17.6%
2,000 to 3,000 sf	1.066	1.009	.109	13.6%
3,000 sf or Higher	.981	.995	.109	13.4%
Overall	.985	1.007	.124	15.7%

## Quality

### Case Processing Summary

		Count	Percent
QUALITY	Average	148	86.0%
	Average Plus	13	7.6%
	Fair	8	4.7%
	Good	1	0.6%
	Low	2	1.2%
Overall		172	100.0%
Excluded		0	
Total		172	

### Ratio Statistics for CURRTOT / TASP

Group	Median	Price Related Differential	Coefficient of Dispersion	Coefficient of Variation Median Centered
Average	.981	1.010	.125	16.0%
Average Plus	1.066	.995	.069	9.9%
Fair	.828	1.045	.105	14.3%
Good	1.066	1.000	.000	.
Low	1.147	1.001	.042	5.9%
Overall	.985	1.007	.124	15.7%

## Condition

### Case Processing Summary

		Count	Percent
CONDITION	Average	165	95.9%
	Badly Worn	2	1.2%
	Fair	4	2.3%
	Good	1	0.6%
Overall		172	100.0%
Excluded		0	
Total		172	

### Ratio Statistics for CURRTOT / TASP

Group	Median	Price Related Differential	Coefficient of Dispersion	Coefficient of Variation Median Centered
Average	.983	1.007	.124	15.8%
Badly Worn	1.147	1.001	.042	5.9%
Fair	.877	1.041	.122	15.7%
Good	1.066	1.000	.000	.
Overall	.985	1.007	.124	15.7%

### Commercial Median Ratio Stratification

## Sale Price

### Case Processing Summary

		Count	Percent
SPRec	LT \$25K	1	2.3%
	\$25K to \$50K	2	4.7%
	\$50K to \$100K	11	25.6%
	\$100K to \$150K	11	25.6%
	\$150K to \$200K	6	14.0%
	\$200K to \$300K	7	16.3%
	\$300K to \$500K	3	7.0%
	\$500K to \$750K	2	4.7%
Overall		43	100.0%
Excluded		0	
Total		43	

### Ratio Statistics for CURRTOT / TASP

Group	Median	Price Related Differential	Coefficient of Dispersion	Coefficient of Variation Median Centered
LT \$25K	1.344	1.000	.000	.
\$25K to \$50K	1.192	1.000	.004	0.5%
\$50K to \$100K	1.141	.991	.177	26.9%
\$100K to \$150K	.944	.999	.108	12.6%
\$150K to \$200K	1.058	1.007	.145	19.8%
\$200K to \$300K	.889	.998	.063	8.3%
\$300K to \$500K	1.076	.976	.176	27.1%
\$500K to \$750K	1.042	.992	.104	14.8%
Overall	1.020	1.018	.168	22.2%

### Subclass

#### Case Processing Summary

	Count	Percent
ABSTRIMP	1212.00	1
	1712.00	1
	1721.00	1
	2212.00	11
	2220.00	4
	2221.00	1
	2230.00	13
	2231.11	1
	2235.00	9
	3215.00	1
Overall	43	100.0%
Excluded	0	
Total	43	

### Ratio Statistics for CURRTOT / TASP

Group	Median	Price Related Differential	Coefficient of Dispersion	Coefficient of Variation Median Centered
1212.00	.983	1.000	.000	.
1712.00	.972	1.000	.000	.
1721.00	.955	1.000	.000	.
2212.00	1.020	.986	.157	20.4%
2220.00	1.246	1.004	.185	25.0%
2221.00	1.333	1.000	.000	.
2230.00	.982	1.024	.098	11.5%
2231.11	.930	1.000	.000	.
2235.00	1.060	1.046	.261	33.8%
3215.00	1.150	1.000	.000	.
Overall	1.020	1.018	.168	22.2%

## Age

### Case Processing Summary

		Count	Percent
AgeRec	Over 100	15	34.9%
	75 to 100	3	7.0%
	50 to 75	8	18.6%
	25 to 50	10	23.3%
	5 to 25	7	16.3%
Overall		43	100.0%
Excluded		0	
Total		43	

### Ratio Statistics for CURRTOT / TASP

Group	Median	Price Related Differential	Coefficient of Dispersion	Coefficient of Variation Median Centered
Over 100	1.003	1.048	.114	15.5%
75 to 100	1.020	1.135	.180	27.5%
50 to 75	.982	1.039	.109	15.7%
25 to 50	1.081	1.003	.231	31.1%
5 to 25	1.060	1.002	.204	25.4%
Overall	1.020	1.018	.168	22.2%

## Improved Area

### Case Processing Summary

		Count	Percent
ImpSFRec	500 to 1,000 sf	1	2.3%
	1,500 to 2,000 sf	9	20.9%
	2,000 to 3,000 sf	13	30.2%
	3,000 sf or Higher	20	46.5%
Overall		43	100.0%
Excluded		0	
Total		43	

### Ratio Statistics for CURRTOT / TASP

Group	Median	Price Related Differential	Coefficient of Dispersion	Coefficient of Variation Median Centered
500 to 1,000 sf	.983	1.000	.000	.
1,500 to 2,000 sf	.982	1.089	.145	17.5%
2,000 to 3,000 sf	.933	1.011	.208	28.5%
3,000 sf or Higher	1.058	1.023	.160	21.0%
Overall	1.020	1.018	.168	22.2%

## Quality

### Case Processing Summary

		Count	Percent
QUALITY	Average	34	79.1%
	Average Plus	2	4.7%
	Fair	6	14.0%
	Low	1	2.3%
Overall		43	100.0%
Excluded		0	
Total		43	

### Ratio Statistics for CURRTOT / TASP

Group	Median	Price Related Differential	Coefficient of Dispersion	Coefficient of Variation Median Centered
Average	.993	.999	.153	21.0%
Average Plus	.934	1.006	.052	7.4%
Fair	1.227	1.008	.146	21.9%
Low	1.344	1.000	.000	.
Overall	1.020	1.018	.168	22.2%

## Condition

### Case Processing Summary

		Count	Percent
CONDITION	Average	38	88.4%
	Badly Worn	1	2.3%
	Fair	4	9.3%
Overall		43	100.0%
Excluded		0	
Total		43	

### Ratio Statistics for CURRTOT / TASP

Group	Median	Price Related Differential	Coefficient of Dispersion	Coefficient of Variation Median Centered
Average	.993	1.006	.165	23.0%
Badly Worn	1.344	1.000	.000	.
Fair	1.169	1.060	.115	19.9%
Overall	1.020	1.018	.168	22.2%

### Vacant Land Median Ratio Stratification

Not applicable