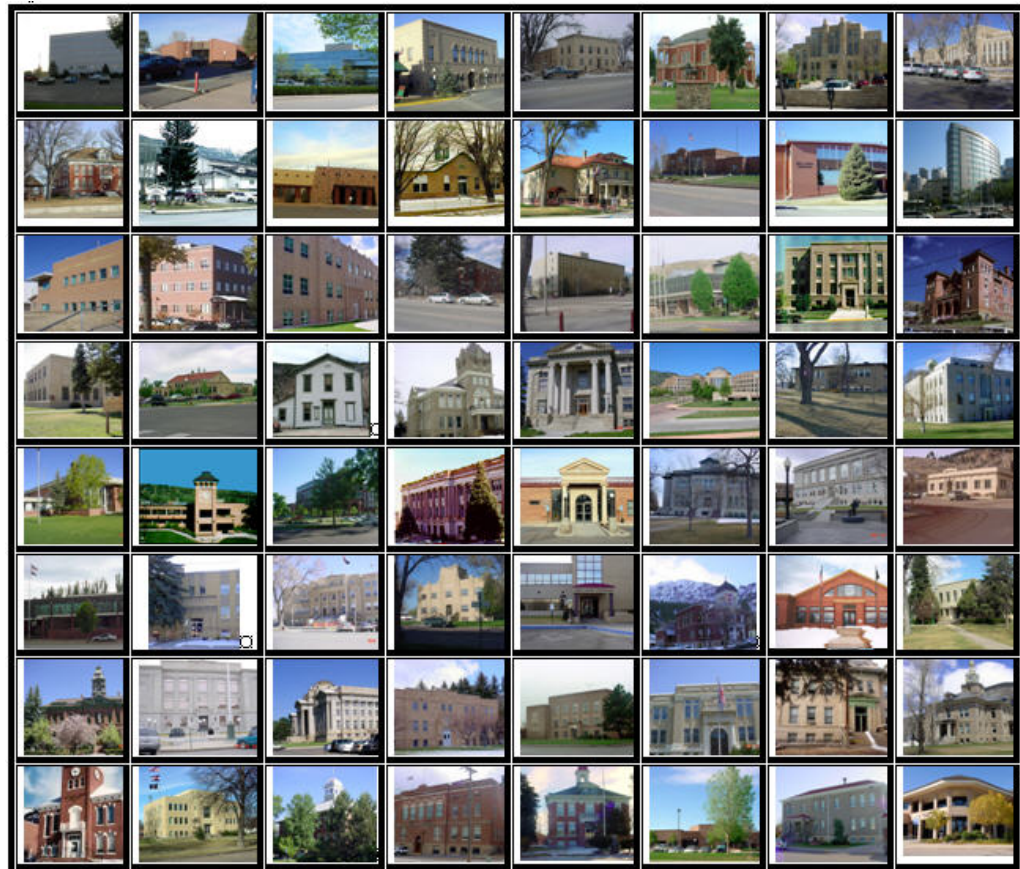




2012 PARK COUNTY PROPERTY ASSESSMENT STUDY



WILDROSE
APPRAISAL, INCORPORATED
Audit Division



September 15, 2012

Mr. Mike Mauer
Director of Research
Colorado Legislative Council
Room 029, State Capitol Building
Denver, Colorado 80203

RE: Final Report for the 2012 Colorado Property Assessment Study

Dear Mr. Mauer:

Wildrose Appraisal Inc.-Audit Division is pleased to submit the Final Reports for the 2012 Colorado Property Assessment Study.

These reports are the result of two analyses: A procedural audit and a statistical audit.

The procedural audit examines all classes of property. It specifically looks at how the assessor develops economic areas, confirms and qualifies sales, develops time adjustments and performs periodic physical property inspections. The audit reviews the procedures for determining subdivision absorption and subdivision discounting. Valuation methodology is examined for residential properties and commercial properties. Procedures are reviewed for producing mines, oil and gas leaseholds and lands producing, producing coal mines, producing earth and stone products, severed mineral interests, and non-producing patented mining claims.

Statistical audits are performed on vacant land, residential properties, commercial/industrial properties and agricultural land. A statistical analysis is performed for personal property compliance on the eleven largest counties: Adams, Arapahoe, Boulder, Denver, Douglas, El Paso, Jefferson, Larimer, Mesa, Pueblo and Weld. The remaining counties receive a personal property procedural study.

Wildrose Appraisal Inc. – Audit Division appreciates the opportunity to be of service to the State of Colorado. Please contact us with any questions or concerns.

A handwritten signature in dark ink, appearing to read "Harry J. Fuller". The signature is fluid and cursive, with a large, stylized "H" and "F".

Harry J. Fuller
Project Manager
Wildrose Appraisal Inc. – Audit Division

TABLE OF CONTENTS

Introduction	3
Regional/Historical Sketch of Park County	4
Ratio Analysis.....	6
<i>Random Deed Analysis</i>	7
Time Trending Verification	8
Sold/Unsold Analysis	9
Agricultural Land Study	11
<i>Agricultural Land</i>	11
<i>Agricultural Outbuildings</i>	12
<i>Agricultural Land Under Improvements</i>	12
Sales Verification.....	13
Economic Area Review and Evaluation	14
Natural Resources	15
<i>Earth and Stone Products</i>	15
Vacant Land.....	16
Possessory Interest Properties	17
Personal Property Audit	18
Wildrose Auditor Staff.....	20
Appendices	21

INTRODUCTION



Colorado

The State Board of Equalization (SBOE) reviews assessments for conformance to the Constitution. The SBOE will order revaluations for counties whose valuations do not reflect the proper valuation period level of value.

The statutory basis for the audit is found in C.R.S. 39-1-104 (16)(a)(b) and (c).

The legislative council sets forth two criteria that are the focus of the audit group:

To determine whether each county assessor is applying correctly the constitutional and statutory provisions, compliance requirements of the State Board of Equalization, and the manuals published by the State Property Tax Administrator to arrive at the actual value of each class of property.

To determine if each assessor is applying correctly the provisions of law to the actual values when arriving at valuations for assessment of all locally valued properties subject to the property tax.

The property assessment audit conducts a two-part analysis: A procedural analysis and a statistical analysis.

The procedural analysis includes all classes of property and specifically looks at how the assessor develops economic areas, confirms and qualifies sales, and develops time adjustments. The audit also examines the procedures for adequately discovering, classifying and valuing agricultural outbuildings, discovering subdivision build-out and subdivision discounting procedures. Valuation methodology for vacant land, improved residential properties and commercial properties is examined. Procedures for producing mines, oil and gas leaseholds and lands producing, producing coal mines, producing earth and stone products, severed mineral interests and non-producing patented mining claims are also reviewed.

Statistical analysis is performed on vacant land, residential properties, commercial industrial properties, agricultural land, and personal property. The statistical study results are compared with State Board of Equalization compliance requirements and the manuals published by the State Property Tax Administrator.

Wildrose Audit has completed the Property Assessment Study for 2012 and is pleased to report its findings for Park County in the following report.

REGIONAL/HISTORICAL SKETCH OF PARK COUNTY

Regional Information

Park County is located in the Central Mountains region of Colorado. The Central Mountains Region is in the central portion of Colorado. It extends from the northern Gilpin county boundary approximately 210 miles

southeasterly to the southern boundary of Colorado, including Chaffee, Clear Creek, Custer, Fremont, Gilpin, Huerfano, Lake, Las Animas, Park, and Teller counties.





Historical Information

Park County has a population of approximately 16,206 people with 7.36 people per square mile, according to the U.S. Census Bureau's 2010 census data. This represents a 11.59 percent change from the 2000 Census.

Park County was named after the large geographic region known as South Park, which was named by early fur traders and trappers in the area. The geographic center of the State of Colorado is located in Park County.

The Town of Fairplay is a statutory town that is the county seat and the most populous town of Park County. The town is the fifth-highest incorporated place in Colorado at an elevation of 9,953 feet. A historic gold mining settlement, the town was founded in 1859 during the early days of the Pike's Peak Gold Rush. Although it was founded during the initial placer mining boom, the mines in the area continued to produce gold and silver ore

for many decades up through the middle of the 20th century.

The town consists of modern retail businesses along the highway, as well as a historic town on the bluff above the river along Front Street. The northern extension of Front Street along the river has been preserved and has become the site of relocated historic structures as an open air museum called South Park City, intended to recreate the early days of the Colorado Gold Rush. The Town of Fairplay, Colorado, is the basis for the Town of South Park, Colorado, in the television series South Park. It also hosts Burro Days, a festival held on the last weekend of July. This event celebrates the town's mining heritage. The main feature of the festival is a 29-mile burro race over rough terrain and elevation gain from downtown Fairplay to the 13,000-ft summit of Mosquito Pass. (*www.Wikipedia.org*)

RATIO ANALYSIS

Methodology

All significant classes of properties were analyzed. Sales were collected for each property class over the appropriate sale period, which was typically defined as the 18-month period between January 2009 and June 2010. Counties with less than 30 sales typically extended the sale period back up to 5 years prior to June 30, 2010 in 6-month increments. If there were still fewer than 30 sales, supplemental appraisals were performed and treated as proxy sales. Residential sales for all counties using this method totaled at least 30 per county. For commercial sales, the total number analyzed was allowed, in some cases, to fall below 30. There were no sale quantity issues for counties requiring vacant land analysis or condominium analysis. Although it was required that we examine the median and coefficient of dispersion for all counties, we also calculated the weighted mean and price-related differential for each class of property. Counties were not passed or failed by these

latter measures, but were counseled if there were anomalies noted during our analysis. Qualified sales were based on the qualification code used by each county, which were typically coded as either “Q” or “C.” The ratio analysis included all sales. The data was trimmed for counties with obvious outliers using IAAO standards for data analysis. In every case, we examined the loss in data from trimming to ensure that only true outliers were excluded. Any county with a significant portion of sales excluded by this trimming method was examined further. No county was allowed to pass the audit if more than 5% of the sales were “lost” because of trimming. For the largest 11 counties, the residential ratio statistics were broken down by economic area as well.

Conclusions

For this final analysis report, the minimum acceptable statistical standards allowed by the State Board of Equalization are:

ALLOWABLE STANDARDS RATIO GRID		
Property Class	Unweighted Median Ratio	Coefficient of Dispersion
Commercial/Industrial	Between .95-1.05	Less than 20.99
Condominium	Between .95-1.05	Less than 15.99
Single Family	Between .95-1.05	Less than 15.99
Vacant Land	Between .95-1.05	Less than 20.99

The results for Park County are:

Park County Ratio Grid					
Property Class	Number of Qualified Sales	Unweighted Median Ratio	Price Related Differential	Coefficient of Dispersion	Time Trend Analysis
Commercial/Industrial	40	1.000	1.081	19.2	Compliant
Condominium	N/A	N/A	N/A	N/A	N/A
Single Family	387	1.018	1.018	11.5	Compliant
Vacant Land	304	1.021	1.076	17.2	Compliant

After applying the above described methodologies, it is concluded from the sales ratios that Park County is in compliance with

SBOE, DPT, and Colorado State Statute valuation guidelines.

Recommendations

None

Random Deed Analysis

An additional analysis was performed as part of the Ratio Analysis. Ten randomly selected deeds with documentary fees were obtained from the Clerk and Recorder. These deeds were for sales that occurred from January 1, 2009 through June 30, 2010. These sales were then checked for inclusion on the Assessor's qualified or unqualified database.

Conclusions

After comparing the list of randomly selected deeds with the Assessor's database, Park County has accurately transferred sales data from the recorded deeds to the qualified or unqualified database.

Recommendations

None



TIME TRENDING VERIFICATION

Methodology

While we recommend that counties use the inverted ratio regression analysis method to account for market (time) trending, some counties have used other IAAO-approved methods, such as the weighted monthly median approach. We are not auditing the methods used, but rather the results of the methods used. Given this range of methodologies used to account for market trending, we concluded that the best validation method was to examine the sale ratios for each class across the appropriate sale period. To be specific, if a county has considered and adjusted correctly for market trending, then the sale ratios should remain stable (i.e. flat) across the sale period. If a residual market trend is detected, then the county may or may not have addressed market

trending adequately, and a further examination is warranted. This validation methodology also considers the number of sales and the length of the sale period. Counties with few sales across the sale period were carefully examined to determine if the statistical results were valid.

Conclusions

After verification and analysis, it has been determined that Park County has complied with the statutory requirements to analyze the effects of time on value in their county. Park County has also satisfactorily applied the results of their time trending analysis to arrive at the time adjusted sales price (TASP).

Recommendations

None

SOLD / UNSOLD ANALYSIS

Methodology

Park County was tested for the equal treatment of sold and unsold properties to ensure that “sales chasing” has not occurred. The auditors employed a multi-step process to determine if sold and unsold properties were valued in a consistent manner.

All qualified residential and commercial class properties were examined using the unit value method, where the actual value per square foot was compared between sold and unsold properties. A class was considered qualified if it met the criteria for the ratio analysis. The median value per square foot for both groups was compared from an appraisal and statistical perspective. If no significant difference was indicated, then we concluded that no further testing was warranted and that the county was in compliance in terms of sold/unsold consistency.

If either residential or commercial differences were significant using the unit value method, or if data limitations made the comparison invalid, then the next step was to perform a ratio analysis comparing the 2010 and 2012 actual values for each qualified class of property. All qualified vacant land classes were tested using this method. The sale property ratios were arrayed using a range of 0.8 to 1.5, which theoretically excluded changes between years that were due to other unrelated changes in the property. These ratios were also stratified at the appropriate level of analysis. Once the percent change was determined for each appropriate class and sub-class, the next step was to select the unsold sample. This sample

was at least 1% of the total population of unsold properties and excluded any sale properties. The unsold sample was filtered based on the attributes of the sold dataset to closely correlate both groups. The ratio analysis was then performed on the unsold properties and stratified. The median and mean ratio distribution was then compared between the sold and unsold group. A non-parametric test such as the Mann-Whitney test for differences between independent samples was undertaken to determine whether any observed differential was significant. If this test determined that the unsold properties were treated in a manner similar to the sold properties, it was concluded that no further testing was warranted and that the county was in compliance.

If a class or sub-class of property was determined to be significantly different by this method, the final step was to perform a multi-variate mass appraisal model that developed ratio statistics from the sold properties that were then applied to the unsold sample. This test compared the measures of central tendency and confidence intervals for the sold properties with the unsold property sample. If this comparison was also determined to be significantly different, then the conclusion was that the county had treated the unsold properties in a different manner than sold properties.

These tests were supported by both tabular and chart presentations, along with saved sold and unsold sample files.

Sold/Unsold Results	
Property Class	Results
Commercial/Industrial	Compliant
Condominium	N/A
Single Family	Compliant
Vacant Land	Compliant

Conclusions

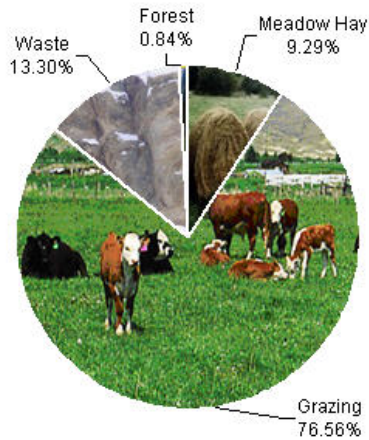
After applying the above described methodologies, it is concluded that Park County is reasonably treating its sold and unsold properties in the same manner.

Recommendations

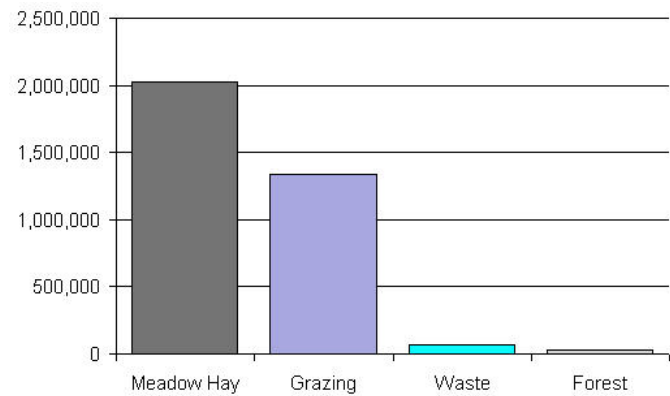
None

AGRICULTURAL LAND STUDY

Acres By Subclass



Value By Subclass



Agricultural Land

County records were reviewed to determine major land categories such as irrigated farm, dry farm, meadow hay, grazing and other lands. In addition, county records were reviewed in order to determine if: Aerial photographs are available and are being used; soil conservation guidelines have been used to classify lands based on productivity; crop rotations have been documented; typical commodities and yields have been determined; orchard lands have been properly classified and valued; expenses reflect a ten year average and are typical landlord expenses; grazing lands have been properly classified and valued; the number of acres in each class and subclass have been determined; the capitalization rate was properly applied. Also, documentation was required for the valuation methods used and any locally developed yields, carrying capacities, and expenses. Records were also checked to ensure that the commodity prices and expenses, furnished by the Property Tax Administrator (PTA), were applied properly.

(See Assessor Reference Library Volume 3 Chapter 5.)

Conclusions

An analysis of the agricultural land data indicates an acceptable appraisal of this property type. Directives, commodity prices and expenses provided by the PTA were properly applied. County yields compared favorably to those published by Colorado Agricultural Statistics. Expenses used by the county were allowable expenses and were in an acceptable range. Grazing lands carrying capacities were in an acceptable range. The data analyzed resulted in the following ratios:



Park County Agricultural Land Ratio Grid						
Abstract Code	Land Class	Number Of Acres	County Value Per Acre	County Assessed Total Value	WRA Total Value	Ratio
4137	Meadow Hay	28,989	70.00	2,024,427	2,021,563	1.00
4147	Grazing	238,823	6.00	1,338,882	1,338,882	1.00
4177	Forest	2,633	12.00	30,486	30,481	1.00
4167	Waste	41,496	2.00	66,973	66,973	1.00
Total/Avg		311,941	11.00	3,460,768	3,457,899	1.00

Recommendations

None

Agricultural Outbuildings

Methodology

Data was collected and reviewed to determine if the guidelines found in the Assessor's Reference Library (ARL) Volume 3, pages 5.74 through 5.77 were being followed.

Conclusions

Park County has substantially complied with the procedures provided by the Division of Property Taxation for the valuation of agricultural outbuildings.

Recommendations

None

Agricultural Land Under Improvements

Methodology

Data was collected and reviewed to determine if the guidelines found in the Assessor's Reference Library (ARL) Volume 3, pages 5.19 and 5.20 were being followed.

Conclusions

Park County has not complied with the procedures provided by the Division of Property Taxation for the valuation of land

under residential improvements that may or may not be integral to an agricultural operation.

Recommendations

It is recommended that Park County be ordered to implement the statute concerning land not integral to an agricultural operation on which there is a residential improvement (39-1-102 (1.6)(a)(I)(A) and (B) CRS).

SALES VERIFICATION

According to Colorado Revised Statutes:

A representative body of sales is required when considering the market approach to appraisal.

(8) In any case in which sales prices of comparable properties within any class or subclass are utilized when considering the market approach to appraisal in the determination of actual value of any taxable property, the following limitations and conditions shall apply:

(a)(I) Use of the market approach shall require a representative body of sales, including sales by a lender or government, sufficient to set a pattern, and appraisals shall reflect due consideration of the degree of comparability of sales, including the extent of similarities and dissimilarities among properties that are compared for assessment purposes. In order to obtain a reasonable sample and to reduce sudden price changes or fluctuations, all sales shall be included in the sample that reasonably reflect a true or typical sales price during the period specified in section 39-1-104 (10.2). Sales of personal property exempt pursuant to the provisions of sections 39-3-102, 39-3-103, and 39-3-119 to 39-3-122 shall not be included in any such sample.

(b) Each such sale included in the sample shall be coded to indicate a typical, negotiated sale, as screened and verified by the assessor. (39-1-103, C.R.S.)

The assessor is required to use sales of real property only in the valuation process.

(8)(f) Such true and typical sales shall include only those sales which have been determined on an individual basis to reflect the selling price of the real property only or which have been adjusted on an individual basis to reflect the selling price of the real property only. (39-1-103, C.R.S.)

Part of the Property Assessment Study is the sales verification analysis. WRA has used the above-cited statutes as a guide in our study of the county's procedures and practices for verifying sales.

WRA reviewed the sales verification procedures in 2012 for Park County. This study was conducted by checking selected sales from the master sales list for the current valuation period. Specifically WRA selected 31 sales listed as unqualified.

All of the sales in the unqualified sales sample had reasons that were clear and supportable.

Conclusions

Park County appears to be doing an excellent job of verifying their sales. WRA agreed with the county's reason for disqualifying each of the sales selected in the sample. There are no recommendations or suggestions.

Recommendations

None

ECONOMIC AREA REVIEW AND EVALUATION

Methodology

Park County has submitted a written narrative describing the economic areas that make up the county's market areas. Park County has also submitted a map illustrating these areas. Each of these narratives have been read and analyzed for logic and appraisal sensibility. The maps were also compared to the narrative for consistency between the written description and the map.

Conclusions

After review and analysis, it has been determined that Park County has adequately

identified homogeneous economic areas comprised of smaller neighborhoods. Each economic area defined is equally subject to a set of economic forces that impact the value of the properties within that geographic area and this has been adequately addressed. Each economic area defined adequately delineates an area that will give "similar values for similar properties in similar areas."

Recommendations

None

NATURAL RESOURCES

Earth and Stone Products

Methodology

Under the guidelines of the Assessor's Reference Library (ARL), Volume 3, Natural Resource Valuation Procedures, the income approach was applied to determine value for production of earth and stone products. The number of tons was multiplied by an economic royalty rate determined by the Division of Property Taxation to determine income. The income was multiplied by a recommended Hoskold factor to determine the actual value. The Hoskold factor is determined by the life of the reserves or the lease. Value is based on two

variables: life and tonnage. The operator determines these since there is no other means to obtain production data through any state or private agency.

Conclusions

The County has applied the correct formulas and state guidelines to earth and stone production.

Recommendations

None

VACANT LAND

Subdivision Discounting

Subdivisions were reviewed in 2012 in Park County. The review showed that subdivisions were discounted pursuant to the Colorado Revised Statutes in Article 39-1-103 (14) and by applying the recommended methodology in ARL Vol 3, Chap 4. Subdivision Discounting in the intervening year was accomplished by reducing the absorption period by one year. In instances where the number of sales within an approved plat was less than the absorption rate

per year calculated for the plat, the absorption period was left unchanged.

Conclusions

Park County has implemented proper procedures to adequately estimate absorption periods, discount rates, and lot values for qualifying subdivisions.

Recommendations

None

POSSESSORY INTEREST PROPERTIES

Possessory Interest

Possessory interest property discovery and valuation is described in the Assessor's Reference Library (ARL) Volume 3 section 7 in accordance with the requirements of Chapter 39-1-103 (17)(a) (II) C.R.S. Possessory Interest is defined by the Property Tax Administrator's Publication ARL Volume 3, Chapter 7: A private property interest in government-owned property or the right to the occupancy and use of any benefit in government-owned property that has been granted under lease, permit, license, concession, contract, or other agreement.

Park County has been reviewed for their procedures and adherence to guidelines when assessing and valuing agricultural and

commercial possessory interest properties. The county has also been queried as to their confidence that the possessory interest properties have been discovered and placed on the tax rolls.

Conclusions

Park County has implemented a discovery process to place possessory interest properties on the roll. They have also correctly and consistently applied the correct procedures and valuation methods in the valuation of possessory interest properties.

Recommendations

None

PERSONAL PROPERTY AUDIT

Park County was studied for its procedural compliance with the personal property assessment outlined in the Assessor's Reference Library (ARL) Volume 5, and in the State Board of Equalization (SBOE) requirements for the assessment of personal property. The SBOE requires that counties use ARL Volume 5, including current discovery, classification, documentation procedures, current economic lives table, cost factor tables, depreciation table, and level of value adjustment factor table.

The personal property audit standards narrative must be in place and current. A listing of businesses that have been audited by the assessor within the twelve-month period reflected in the plan is given to the auditor. The audited businesses must be in conformity with those described in the plan.

Aggregate ratio will be determined solely from the personal property accounts that have been physically inspected. The minimum assessment sample is one percent or ten schedules, whichever is greater, and the maximum assessment audit sample is 100 schedules.

For the counties having over 100,000 population, WRA selected a sample of all personal property schedules to determine whether the assessor is correctly applying the provisions of law and manuals of the Property Tax Administrator in arriving at the assessment levels of such property. This sample was selected from the personal property schedules audited by the assessor. In no event was the sample selected by the contractor less than 30 schedules. The counties to be included in this study are Adams, Arapahoe, Boulder, Denver, Douglas, El Paso, Jefferson, Larimer, Mesa, Pueblo, and Weld. All other counties received a procedural study.

Park County is compliant with the guidelines set forth in ARL Volume 5 regarding discovery procedures, using the following methods to discover personal property accounts in the county:

- Public Record Documents
- MLS Listing and/or Sold Books
- Chamber of Commerce/Economic Development Contacts
- Local Telephone Directories, Newspapers or Other Local Publications
- Personal Observation, Physical Canvassing or Word of Mouth
- Questionnaires, Letters and/or Phone Calls to Buyer, Seller and/or Realtor
- Internet

The county uses the Division of Property Taxation (DPT) recommended classification and documentation procedures. The DPT's recommended cost factor tables, depreciation tables and level of value adjustment factor tables are also used.

Park County submitted their personal property written audit plan and was current for the 2012 valuation period. The number and listing of businesses audited was also submitted and was in conformance with the written audit plan. The following audit triggers were used by the county to select accounts to be audited:

- Businesses in a selected area
- Accounts with obvious discrepancies
- New businesses filing for the first time
- Accounts with greater than 10% change
- Incomplete or inconsistent declarations
- Accounts with omitted property



- Same business type or use
- Businesses with no deletions or additions for 2 or more years
- Non-filing Accounts - Best Information Available
- Accounts close to the \$5,500 actual value exemption status
- Lowest or highest quartile of value per square foot
- Accounts protested with substantial disagreement

Conclusions

Park County has employed adequate discovery, classification, documentation, valuation, and auditing procedures for their personal property assessment and is in statistical compliance with SBOE requirements.

Recommendations

None

WILDROSE AUDITOR STAFF

Harry J. Fuller, *Audit Project Manager*

Suzanne Howard, *Audit Administrative Manager*

Steve Kane, *Audit Statistician*

Carl W. Ross, *Agricultural / Natural Resource Analyst*

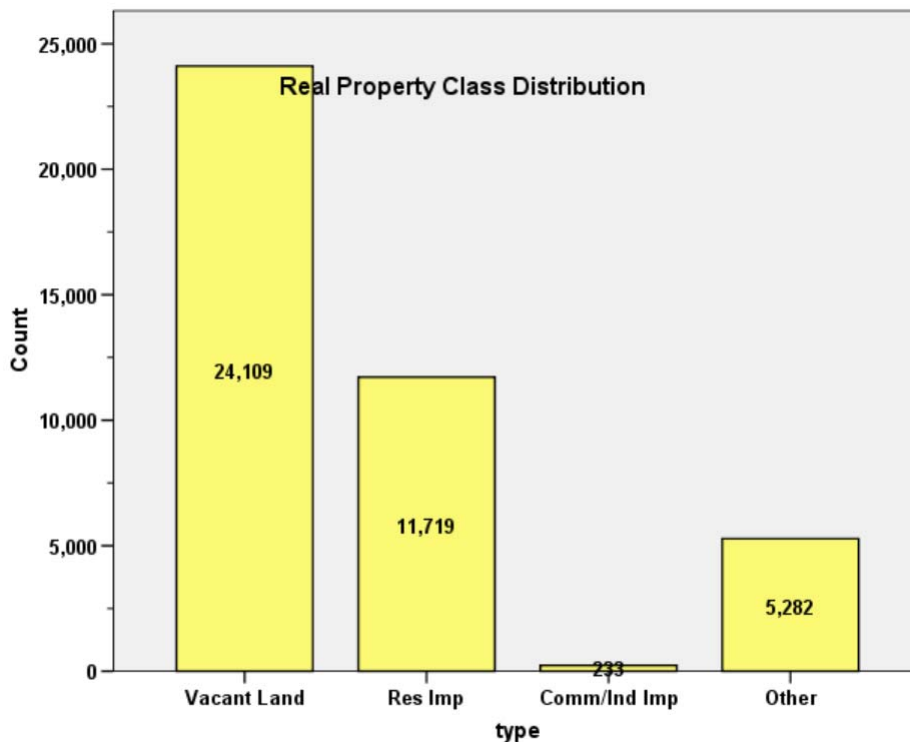
J. Andrew Rodriguez, *Field Analyst*

APPENDICES

STATISTICAL COMPLIANCE REPORT FOR PARK COUNTY 2012

I. OVERVIEW

Park County is located in central Colorado. The county has a total of 41,343 real property parcels, according to data submitted by the county assessor's office in 2012. The following provides a breakdown of property classes for this county:



The vacant land class of properties was dominated by residential land. Residential lots (coded 100) accounted for 93.4% of all vacant land parcels.

For residential improved properties, single family properties accounted for 95.4% of all residential properties.

Commercial and industrial properties represented a much smaller proportion of property classes in comparison. Commercial/industrial sales accounted for less than 0.56% of all such properties in this county.

II. DATA FILES

The following sales analyses were based on the requirements of the 2012 Colorado Property Assessment Study. Information was provided by the Park Assessor's Office in April 2012. The data included all 5 property record files as specified by the Auditor, plus an 6th file for commercial sales.

III. RESIDENTIAL SALES RESULTS

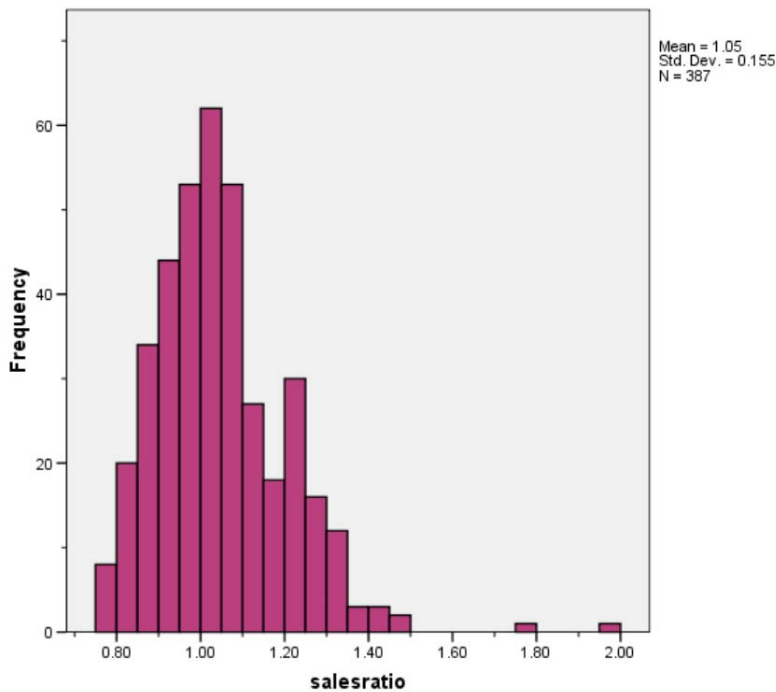
The following steps were taken to analyze the residential sales:

- | | |
|--|-------|
| 1. Select improved sales | 2,187 |
| 2. Select residential sales only | 2,093 |
| 3. Sales between January 1, 2009 and June 30, 2010 | 387 |

The sales ratio analysis was analyzed as follows:

Median	1.018
Price Related Differential	1.018
Coefficient of Dispersion	.115

The above ratio statistics were in compliance with the standards set forth by the Colorado State Board of Equalization (SBOE) for the overall residential sales. The following graphs describe further the sales ratio distribution for these properties:





The above graphs indicate that the distribution of the sale ratios was within state mandated limits. No sales were trimmed.

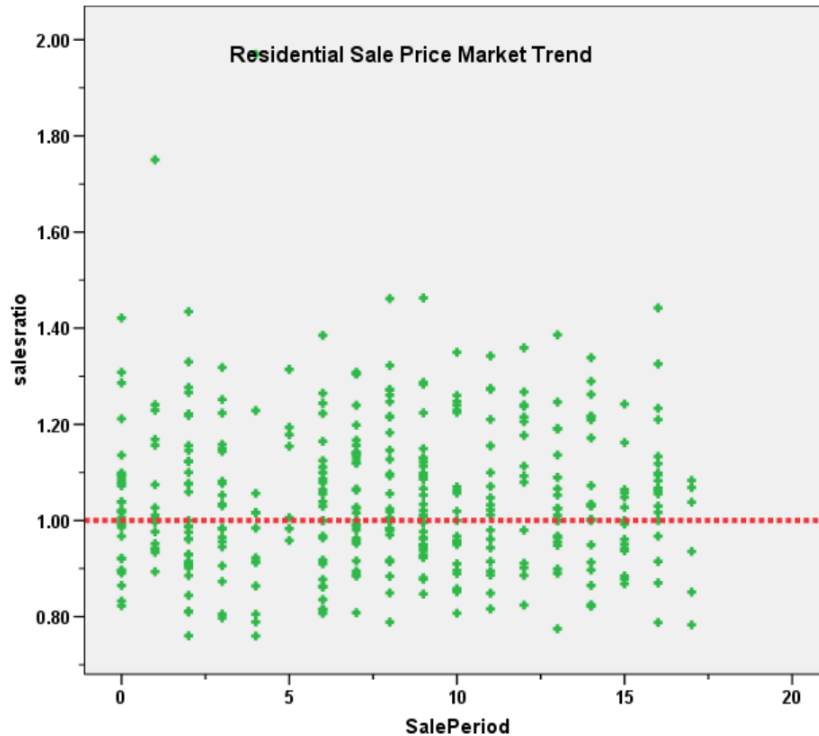
Residential Market Trend Analysis

We next analyzed the residential dataset using the 18-month sale period for any residual market trending, with the following results:

Coefficients^a

Model	Unstandardized Coefficients		Standardized Coefficients	t	Sig.
	B	Std. Error	Beta		
1 (Constant)	1.044	.015		70.300	.000
SalePeriod	.000	.002	.007	.138	.891

a. Dependent Variable: salesratio



The above analysis indicated that the assessor has adequately addressed market trending in the valuation of residential properties.

Sold/Unsold Analysis

In terms of the valuation consistency between sold and unsold residential properties, we compared the median actual value per square foot for 2012 between each group, as follows:

Group	No.	Median	Mean
Unsold	11,334	\$158	\$163
Sold	386	\$168	\$171

The above results indicate that sold and unsold residential properties were valued in a consistent manner.

IV. COMMERCIAL/INDUSTRIAL SALE RESULTS

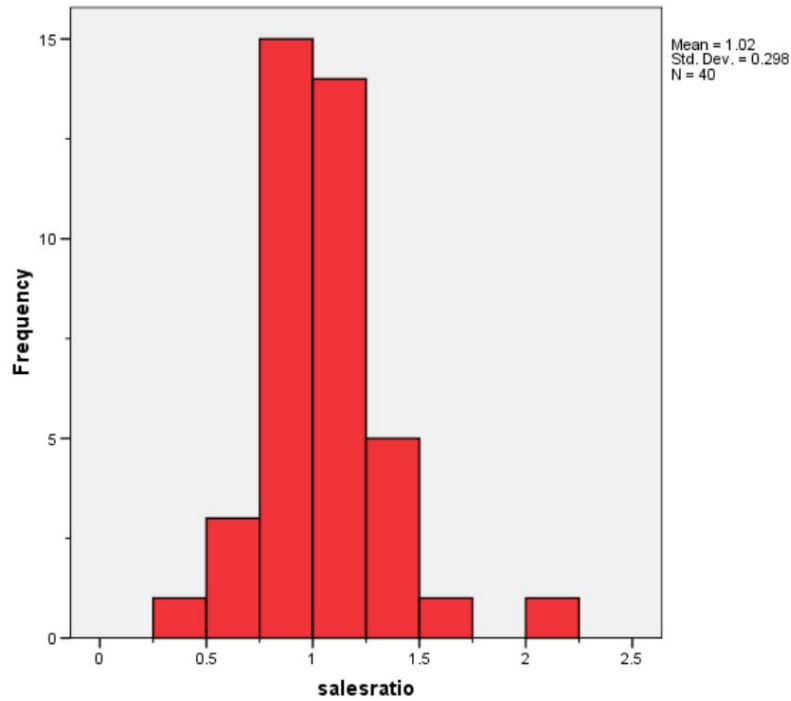
The following steps were taken to analyze these commercial/industrial sales:

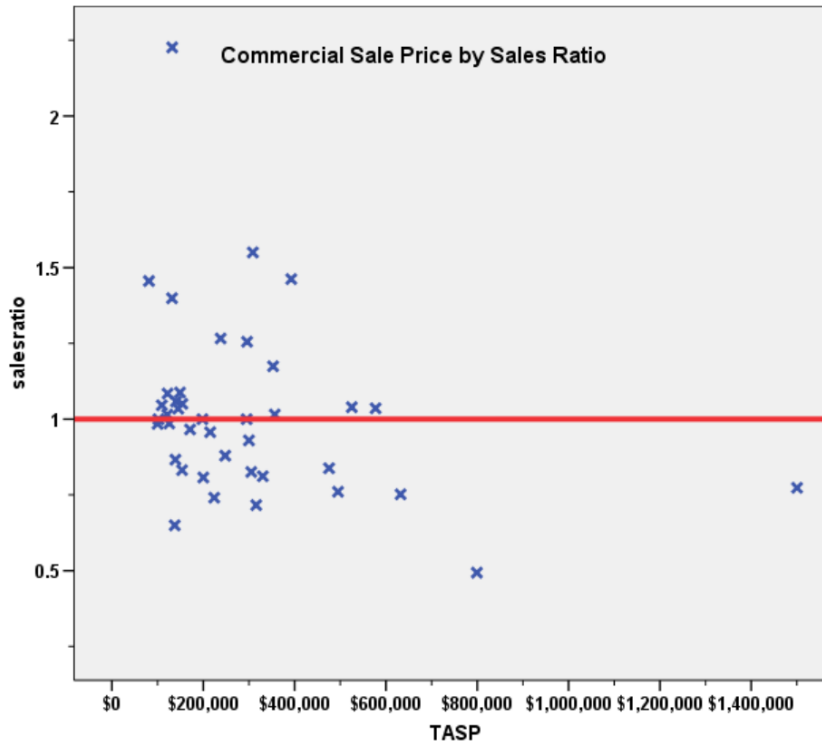
1. Select improved sales 2,187
2. Select commercial/industrial sales 40

The sales ratio analysis was analyzed as follows:

Median	1.000
Price Related Differential	1.081
Coefficient of Dispersion	.192

The above tables indicate that the Park County commercial/industrial sale ratios were in compliance with the SBOE standards. The following histogram and scatter plot describe the sales ratio distribution further:





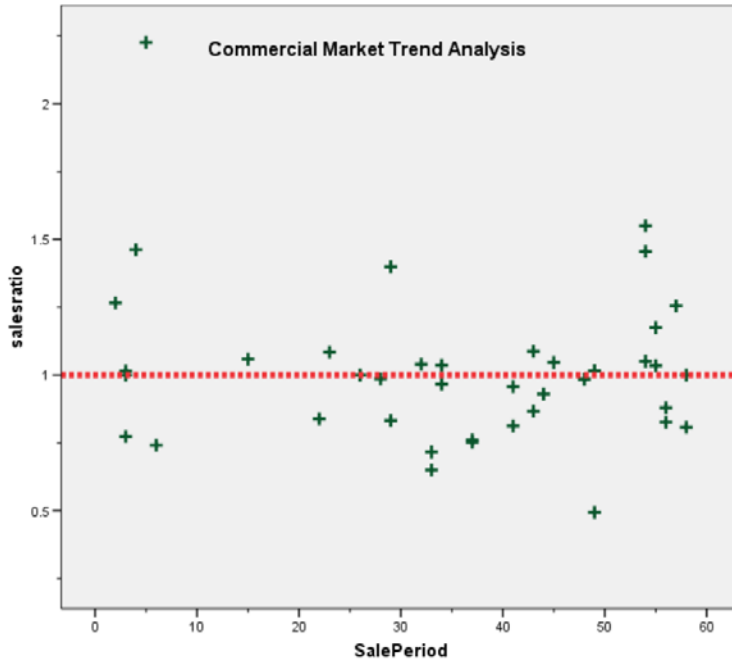
Commercial Market Trend Analysis

The assessor did not apply any market trend adjustment to the commercial dataset. The 40 commercial/industrial sales were analyzed, examining the sale ratios across a 60 month sale period with the following results:

Coefficients^a

Model	Unstandardized Coefficients		Standardized Coefficients	t	Sig.
	B	Std. Error	Beta		
1 (Constant)	1.119	.102		10.929	.000
SalePeriod	-.003	.003	-.172	-1.075	.289

a. Dependent Variable: salesratio



The market trend results indicated no statistically significant trend. We concur that no market trend adjustments were warranted for properties in this class for Park County.

Sold/Unsold Analysis

In terms of the valuation consistency between sold and unsold commercial/industrial properties, we compared the median actual value per square foot for 2012 between each group, as follows:

Subclass	Group	No.	Median	Mean
Total	Unsold	205	\$77	\$98
	Sold	40	\$70	\$94

The above results indicate that sold commercial properties and unsold properties were valued consistently.

V. VACANT LAND SALE RESULTS

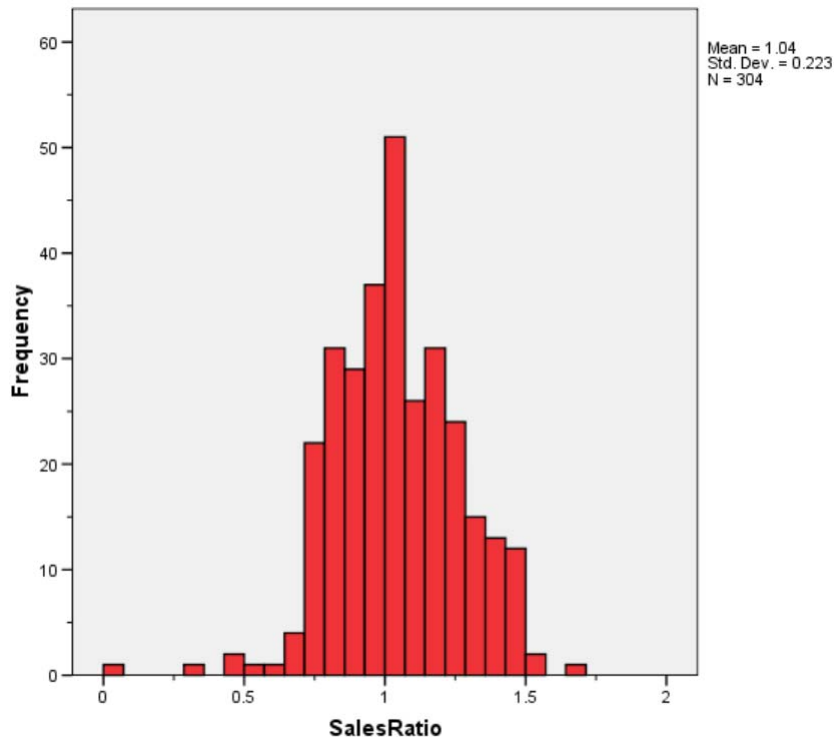
The following steps were taken to analyze vacant land sales:

1. Select vacant land sales 1,869
2. Sales between July 1, 2009 and June 30, 2010 304

The sales ratio analysis was analyzed as follows:

Median	1.021
Price Related Differential	1.076
Coefficient of Dispersion	.172

The above tables indicate that the Park County vacant land sale ratios were in compliance with the SBOE standards. The following histogram and scatter plot describe the sales ratio distribution further:



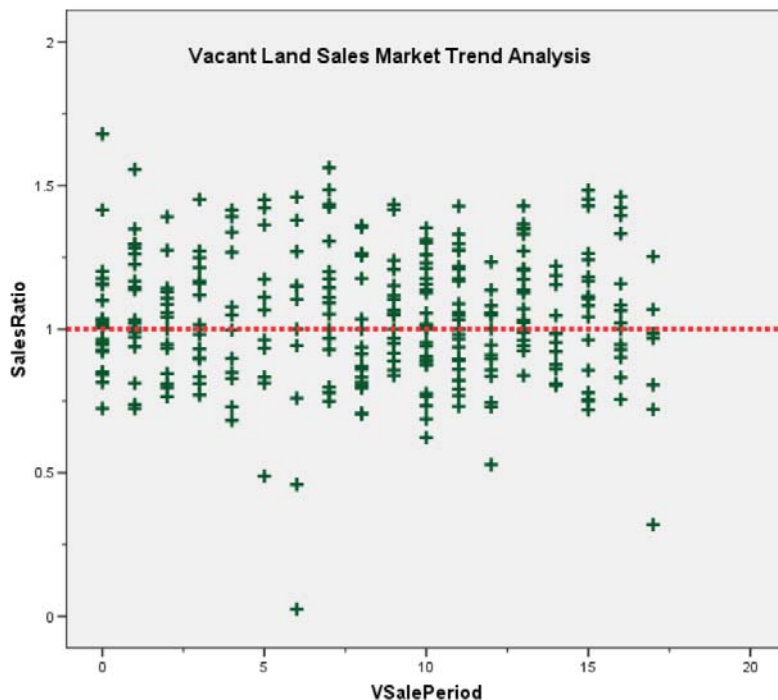
Vacant Land Market Trend Analysis

The assessor did apply market trend adjustment to the vacant land dataset. We analyzed the sales ratios for vacant land sales, based on the time adjusted sale price (TASP) and the actual land value to determine if there was any residual time trending in the vacant land valuations. The 318 vacant land sales were analyzed, examining the sales ratios across the 18 month sale period with the following results:

Coefficients^a

Model		Unstandardized Coefficients		Standardized Coefficients	t	Sig.
		B	Std. Error	Beta		
1	(Constant)	1.050	.024		42.978	.000
	VSalePeriod	-.001	.003	-.024	-.420	.675

a. Dependent Variable: SalesRatio



The market trend analysis indicated no statistically significant trend. Based on these results, we concluded that the assessor has adequately considered market trending in their vacant land valuations.

Sold/Unsold Analysis

We compared the median change in actual value between 2010 and 2012 for vacant land properties to determine if sold and unsold properties were valued consistently, as follows:

Group	No.	Median	Mean
Unsold	23,680	0.93	0.96
Sold	301	0.95	1.09

The above results indicated that sold and unsold vacant land properties were valued consistently overall.

V. AGRICULTURAL IMPROVEMENTS ANALYSIS

The final statistical verification concerned the assigned actual values for agricultural residential improvements. We compared the actual value per square foot rate for this group and compared it to rates assigned to residential single family improvements in Park County.

The following indicates that agricultural residential improvements were valued in a manner similar to the single family residential improvements in this county:

Descriptives				
	ABSTRIMP		Statistic	Std. Error
ImpValSF	1212	Mean	\$123.50	\$.439
		95% Confidence Interval for Mean		
		Lower Bound	\$122.64	
		Upper Bound	\$124.36	
		5% Trimmed Mean	\$122.14	
		Median	\$121.12	
		Variance	2159.019	
		Std. Deviation	\$46.465	
		Minimum	\$0	
		Maximum	\$457	
		Range	\$457	
		Interquartile Range	\$63	
		Skewness	.509	.023
		Kurtosis	.864	.046
	4277	Mean	\$122.66	\$3.332
		95% Confidence Interval for Mean		
		Lower Bound	\$116.09	
		Upper Bound	\$129.22	
		5% Trimmed Mean	\$120.31	
		Median	\$120.26	
		Variance	2443.049	
		Std. Deviation	\$49.427	
		Minimum	\$9	
		Maximum	\$431	
		Range	\$422	
		Interquartile Range	\$62	
		Skewness	1.403	.164
		Kurtosis	6.348	.327

VI. Conclusions

Based on this statistical analysis, there were no significant compliance issues concluded for Park County as of the date of this report.

STATISTICAL ABSTRACT

Residential

Ratio Statistics for CURRTOT / TASP

Mean	95% Confidence Interval for Mean		Median	95% Confidence Interval for Median			Weighted Mean	95% Confidence Interval for Weighted Mean		Price Related Differential	Coefficient of Dispersion	Coefficient of Variation
	Lower Bound	Upper Bound		Lower Bound	Upper Bound	Actual Coverage		Lower Bound	Upper Bound			Mean Centered
1.046	1.030	1.061	1.018	1.000	1.034	95.8%	1.027	1.011	1.044	1.018	.115	14.8%

The confidence interval for the median is constructed without any distribution assumptions. The actual coverage level may be greater than the specified level. Other confidence intervals are constructed by assuming a Normal distribution for the ratios.

Commercial/Industrial

Ratio Statistics for CURRTOT / TASP

Mean	95% Confidence Interval for Mean		Median	95% Confidence Interval for Median			Weighted Mean	95% Confidence Interval for Weighted Mean		Price Related Differential	Coefficient of Dispersion	Coefficient of Variation
	Lower Bound	Upper Bound		Lower Bound	Upper Bound	Actual Coverage		Lower Bound	Upper Bound			Mean Centered
1.021	.926	1.116	1.000	.879	1.040	96.2%	.944	.838	1.050	1.081	.192	29.2%

The confidence interval for the median is constructed without any distribution assumptions. The actual coverage level may be greater than the specified level. Other confidence intervals are constructed by assuming a Normal distribution for the ratios.

Vacant Land

Ratio Statistics for CURRLND / VTASP

Mean	95% Confidence Interval for Mean		Median	95% Confidence Interval for Median			Weighted Mean	95% Confidence Interval for Weighted Mean		Price Related Differential	Coefficient of Dispersion	Coefficient of Variation
	Lower Bound	Upper Bound		Lower Bound	Upper Bound	Actual Coverage		Lower Bound	Upper Bound			Mean Centered
1.041	1.016	1.067	1.021	1.000	1.054	95.5%	.967	.916	1.018	1.076	.172	21.4%

The confidence interval for the median is constructed without any distribution assumptions. The actual coverage level may be greater than the specified level. Other confidence intervals are constructed by assuming a Normal distribution for the ratios.



Residential Median Ratio Stratification

Sale Price

Case Processing Summary

	Count	Percent
SPRec LT \$25K	2	.5%
\$25K to \$50K	1	.3%
\$50K to \$100K	20	5.2%
\$100K to \$150K	54	14.0%
\$150K to \$200K	101	26.1%
\$200K to \$300K	141	36.4%
\$300K to \$500K	64	16.5%
\$500K to \$750K	3	.8%
\$750K to \$1,000K	1	.3%
Overall	387	100.0%
Excluded	0	
Total	387	

Ratio Statistics for CURRTOT / TASP

Group	Median	Price Related Differential	Coefficient of Dispersion	Coefficient of Variation
				Median Centered
LT \$25K	1.390	1.013	.022	3.2%
\$25K to \$50K	1.039	1.000	.000	.%
\$50K to \$100K	1.108	.989	.149	17.9%
\$100K to \$150K	1.171	1.000	.105	12.5%
\$150K to \$200K	1.053	1.001	.101	13.9%
\$200K to \$300K	1.000	1.000	.105	15.3%
\$300K to \$500K	.987	1.003	.095	12.4%
\$500K to \$750K	1.020	.996	.095	15.8%
\$750K to \$1,000K	.760	1.000	.000	.%
Overall	1.018	1.018	.115	15.5%

Subclass

Case Processing Summary

	Count	Percent
ABSTRIMP 0	1	.3%
1212	381	98.4%
1230	2	.5%
1240	1	.3%
1548	1	.3%
4278	1	.3%
Overall	387	100.0%
Excluded	0	
Total	387	

Ratio Statistics for CURRTOT / TASP

Group	Median	Price Related Differential	Coefficient of Dispersion	Coefficient of Variation
				Median Centered
0	1.359	1.000	.000	.%
1212	1.017	1.016	.114	15.3%
1230	.934	.957	.127	17.9%
1240	1.421	1.000	.000	.%
1548	1.266	1.000	.000	.%
4278	1.066	1.000	.000	.%
Overall	1.018	1.018	.115	15.5%

Age

Case Processing Summary

	Count	Percent
AgeRec 0	1	.3%
Over 100	1	.3%
75 to 100	4	1.0%
50 to 75	12	3.1%
25 to 50	108	27.9%
5 to 25	219	56.6%
5 or Newer	42	10.9%
Overall	387	100.0%
Excluded	0	
Total	387	

Ratio Statistics for CURRTOT / TASP

Group	Median	Price Related Differential	Coefficient of Dispersion	Coefficient of Variation
				Median Centered
0	1.359	1.000	.000	.%
Over 100	.957	1.000	.000	.%
75 to 100	1.015	1.018	.040	6.4%
50 to 75	.975	.989	.145	18.2%
25 to 50	1.033	1.012	.113	14.2%
5 to 25	1.022	1.019	.119	16.3%
5 or Newer	1.000	1.020	.091	12.6%
Overall	1.018	1.018	.115	15.5%

Improved Area

Case Processing Summary

	Count	Percent
ImpSFRec 0	1	.3%
500 to 1,000 sf	101	26.1%
1,000 to 1,500 sf	153	39.5%
1,500 to 2,000 sf	82	21.2%
2,000 to 3,000 sf	31	8.0%
3,000 sf or Higher	19	4.9%
Overall	387	100.0%
Excluded	0	
Total	387	

Ratio Statistics for CURRTOT / TASP

Group	Median	Price Related Differential	Coefficient of Dispersion	Coefficient of Variation
				Median Centered
0	1.359	1.000	.000	.%
500 to 1,000 sf	1.001	1.023	.117	15.4%
1,000 to 1,500 sf	1.022	1.015	.109	13.7%
1,500 to 2,000 sf	1.011	1.020	.109	14.4%
2,000 to 3,000 sf	1.027	1.000	.102	13.5%
3,000 sf or Higher	1.066	1.066	.189	28.9%
Overall	1.018	1.018	.115	15.5%

Improvement Quality

Case Processing Summary

	Count	Percent
QUALITY	1	.3%
Average	149	38.5%
Average Plus	109	28.2%
Fair	45	11.6%
Fair Plus	49	12.7%
Good	26	6.7%
Low	1	.3%
Low Plus	5	1.3%
Very Good	2	.5%
Overall	387	100.0%
Excluded	0	
Total	387	

Ratio Statistics for CURRTOT / TASP

Group	Median	Price Related Differential	Coefficient of Dispersion	Coefficient of Variation
				Median Centered
	1.359	1.000	.000	.%
Average	1.024	1.017	.114	14.0%
Average Plus	1.027	1.016	.114	17.4%
Fair	1.000	1.017	.128	16.8%
Fair Plus	1.032	1.024	.122	15.2%
Good	.989	1.020	.077	11.1%
Low	1.177	1.000	.000	.%
Low Plus	1.019	.972	.081	11.3%
Very Good	1.127	1.003	.095	13.4%
Overall	1.018	1.018	.115	15.5%

Improvement Condition

Case Processing Summary

	Count	Percent
CONDITION	1	.3%
Average	229	59.2%
Badly Worn	2	.5%
Fair	43	11.1%
Good	111	28.7%
Worn Out	1	.3%
Overall	387	100.0%
Excluded	0	
Total	387	

Ratio Statistics for CURRTOT / TASP

Group	Median	Price Related Differential	Coefficient of Dispersion	Coefficient of Variation
				Median Centered
	1.359	1.000	.000	.%
Average	1.024	1.015	.109	13.9%
Badly Worn	1.135	1.322	.252	35.7%
Fair	1.039	.997	.134	15.8%
Good	1.001	1.023	.116	17.9%
Worn Out	1.016	1.000	.000	.%
Overall	1.018	1.018	.115	15.5%

Commercial Median Ratio Stratification

Sale Price

Case Processing Summary

	Count	Percent
SPRec \$50K to \$100K	2	5.0%
\$100K to \$150K	12	30.0%
\$150K to \$200K	5	12.5%
\$200K to \$300K	7	17.5%
\$300K to \$500K	9	22.5%
\$500K to \$750K	3	7.5%
\$750K to \$1,000K	1	2.5%
Over \$1,000K	1	2.5%
Overall	40	100.0%
Excluded	0	
Total	40	

Ratio Statistics for CURRTOT / TASP

Group	Median	Price Related Differential	Coefficient of Dispersion	Coefficient of Variation
				Median Centered
\$50K to \$100K	1.220	1.021	.193	27.3%
\$100K to \$150K	1.040	.999	.188	38.1%
\$150K to \$200K	.966	1.002	.085	11.7%
\$200K to \$300K	.957	.993	.145	20.9%
\$300K to \$500K	.838	1.012	.277	43.5%
\$500K to \$750K	1.036	1.010	.092	19.4%
\$750K to \$1,000K	.494	1.000	.000	.%
Over \$1,000K	.773	1.000	.000	.%
Overall	1.000	1.081	.192	29.9%

Subclass

Case Processing Summary

	Count	Percent
ABSTRIMP 1212	2	5.0%
1548	1	2.5%
1712	4	10.0%
1716	2	5.0%
1724	1	2.5%
1879	1	2.5%
1885	1	2.5%
2102	1	2.5%
2212	16	40.0%
2215	1	2.5%
2218	1	2.5%
2220	4	10.0%
2221	1	2.5%
2222	1	2.5%
2225	1	2.5%
2235	2	5.0%
Overall	40	100.0%
Excluded	0	
Total	40	

Ratio Statistics for CURRTOT / TASP

Group	Median	Price Related Differential	Coefficient of Dispersion	Coefficient of Variation
				Median Centered
1212	.931	1.161	.169	23.9%
1548	1.266	1.000	.000	.%
1712	.866	1.066	.244	30.8%
1716	.965	1.000	.036	5.1%
1724	.984	1.000	.000	.%
1879	1.000	1.000	.000	.%
1885	.812	1.000	.000	.%
2102	.761	1.000	.000	.%
2212	1.025	1.017	.248	39.0%
2215	1.462	1.000	.000	.%
2218	.752	1.000	.000	.%
2220	.962	1.023	.057	9.3%
2221	1.046	1.000	.000	.%
2222	1.175	1.000	.000	.%
2225	.838	1.000	.000	.%
2235	1.121	.954	.120	17.0%
Overall	1.000	1.081	.192	29.9%

Age

Case Processing Summary

		Count	Percent
AgeRec	Over 100	3	7.5%
	75 to 100	4	10.0%
	50 to 75	11	27.5%
	25 to 50	10	25.0%
	5 to 25	12	30.0%
Overall		40	100.0%
Excluded		0	
Total		40	

Ratio Statistics for CURRTOT / TASP

Group	Median	Price Related Differential	Coefficient of Dispersion	Coefficient of Variation
				Median Centered
Over 100	.826	1.239	.210	32.7%
75 to 100	1.062	.976	.111	21.9%
50 to 75	1.046	1.012	.198	25.5%
25 to 50	.992	.981	.079	14.6%
5 to 25	.958	1.179	.281	46.1%
Overall	1.000	1.081	.192	29.9%

Improved Area

Case Processing Summary

		Count	Percent
ImpSFRec	LE 500 sf	1	2.5%
	500 to 1,000 sf	4	10.0%
	1,000 to 1,500 sf	8	20.0%
	1,500 to 2,000 sf	2	5.0%
	2,000 to 3,000 sf	6	15.0%
	3,000 sf or Higher	19	47.5%
Overall		40	100.0%
Excluded		0	
Total		40	

Ratio Statistics for CURRTOT / TASP

Group	Median	Price Related Differential	Coefficient of Dispersion	Coefficient of Variation
				Median Centered
LE 500 sf	1.088	1.000	.000	.%
500 to 1,000 sf	.895	.987	.143	19.1%
1,000 to 1,500 sf	1.007	1.001	.044	6.3%
1,500 to 2,000 sf	1.168	1.143	.247	34.9%
2,000 to 3,000 sf	.933	1.090	.353	63.8%
3,000 sf or Higher	1.000	1.098	.216	28.1%
Overall	1.000	1.081	.192	29.9%

Improvement Quality

Case Processing Summary

		Count	Percent
QUALITY	Average	26	65.0%
	Average Plus	5	12.5%
	Excellent	1	2.5%
	Fair	4	10.0%
	Fair Plus	2	5.0%
	Low	2	5.0%
Overall		40	100.0%
Excluded		0	
Total		40	

Ratio Statistics for CURRTOT / TASP

Group	Median	Price Related Differential	Coefficient of Dispersion	Coefficient of Variation
				Median Centered
Average	.962	1.071	.157	21.0%
Average Plus	1.016	1.070	.417	66.4%
Excellent	.773	1.000	.000	.%
Fair	1.037	.997	.069	13.1%
Fair Plus	1.275	.938	.147	20.8%
Low	1.200	.979	.166	23.5%
Overall	1.000	1.081	.192	29.9%

Improvement Condition

Case Processing Summary

		Count	Percent
CONDITION	Average	17	42.5%
	Badly Worn	6	15.0%
	Excellent	1	2.5%
	Fair	8	20.0%
	Good	8	20.0%
Overall		40	100.0%
Excluded		0	
Total		40	

Ratio Statistics for CURRTOT / TASP

Group	Median	Price Related Differential	Coefficient of Dispersion	Coefficient of Variation
				Median Centered
Average	.957	1.043	.118	14.9%
Badly Worn	1.027	.976	.123	21.3%
Excellent	.773	1.000	.000	.%
Fair	.993	1.171	.205	29.8%
Good	1.105	1.072	.336	46.8%
Overall	1.000	1.081	.192	29.9%

Vacant Land Median Ratio Stratification

Subclass

Case Processing Summary

		Count	Percent
ABSTRLND	100	265	87.2%
	103	5	1.6%
	105	8	2.6%
	248	1	.3%
	315	1	.3%
	320	1	.3%
	520	1	.3%
	530	1	.3%
	550	3	1.0%
	560	1	.3%
	1112	14	4.6%
	1612	1	.3%
	4147	1	.3%
	5140	1	.3%
Overall		304	100.0%
Excluded		0	
Total		304	

Ratio Statistics for CURRLND /VTASP

Group	Median	Price Related Differential	Coefficient of Dispersion	Coefficient of Variation
				Median Centered
100	1.030	1.077	.161	20.2%
103	1.155	1.035	.168	21.4%
105	1.158	1.052	.189	23.9%
248	1.297	1.000	.000	.%
315	.860	1.000	.000	.%
320	1.423	1.000	.000	.%
520	.954	1.000	.000	.%
530	1.111	1.000	.000	.%
550	1.000	.850	.264	43.0%
560	.985	1.000	.000	.%
1112	.883	1.007	.152	19.7%
1612	.487	1.000	.000	.%
4147	.024	1.000	.000	.%
5140	1.127	1.000	.000	.%
Overall	1.021	1.076	.172	22.0%