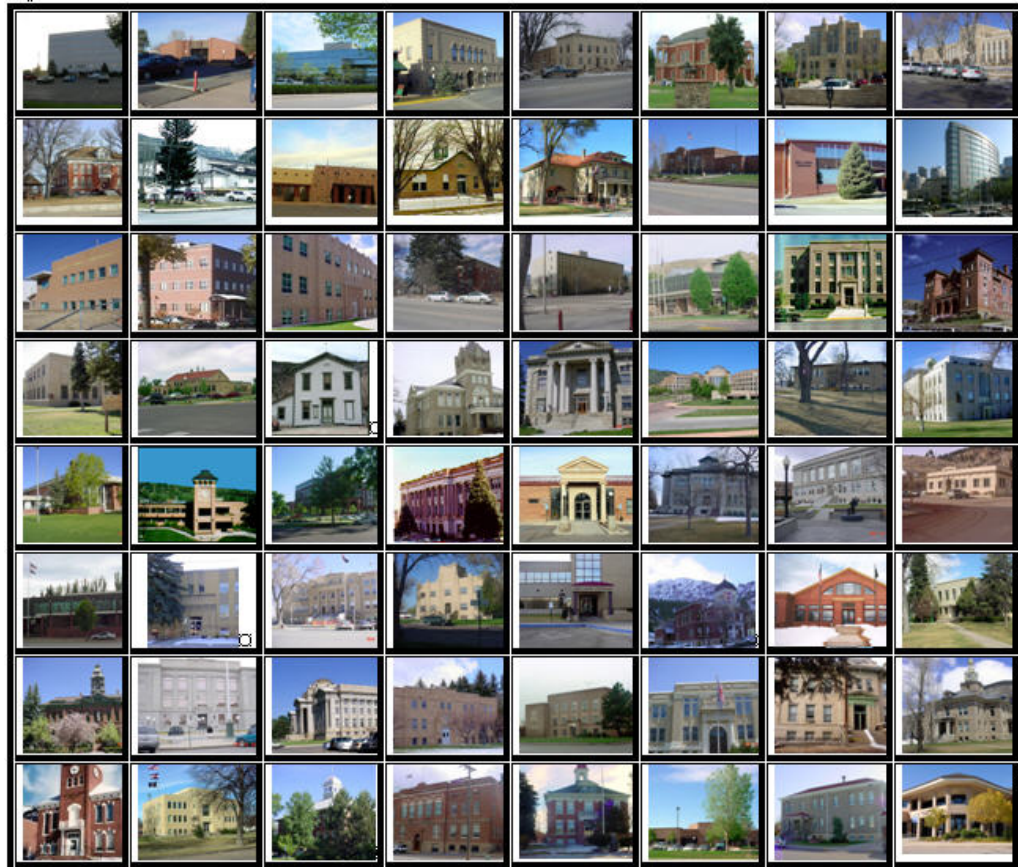




2014

MINERAL COUNTY  
PROPERTY ASSESSMENT  
STUDY

---



WILDROSE  
APPRAISAL, INCORPORATED  
Audit Division



September 15, 2014

Mr. Mike Mauer  
Director of Research  
Colorado Legislative Council  
Room 029, State Capitol Building  
Denver, Colorado 80203

**RE: Final Report for the 2014 Colorado Property Assessment Study**

Dear Mr. Mauer:

Wildrose Appraisal Inc.-Audit Division is pleased to submit the Final Reports for the 2014 Colorado Property Assessment Study.

These reports are the result of two analyses: A procedural audit and a statistical audit.

The procedural audit examines all classes of property. It specifically looks at how the assessor develops economic areas, confirms and qualifies sales, develops time adjustments and performs periodic physical property inspections. The audit reviews the procedures for determining subdivision absorption and subdivision discounting. Valuation methodology is examined for residential properties and commercial properties. Procedures are reviewed for producing mines, oil and gas leaseholds and lands producing, producing coal mines, producing earth and stone products, severed mineral interests, and non-producing patented mining claims.

Statistical audits are performed on vacant land, residential properties, commercial/industrial properties and agricultural land. A statistical analysis is performed for personal property compliance on the eleven largest counties: Adams, Arapahoe, Boulder, Denver, Douglas, El Paso, Jefferson, Larimer, Mesa, Pueblo and Weld. The remaining counties receive a personal property procedural study.

Wildrose Appraisal Inc. – Audit Division appreciates the opportunity to be of service to the State of Colorado. Please contact us with any questions or concerns.

A handwritten signature in dark ink, reading "Harry J. Fuller". The signature is fluid and cursive, with the first name "Harry" and last name "Fuller" clearly distinguishable.

Harry J. Fuller  
Project Manager  
Wildrose Appraisal Inc. – Audit Division

## TABLE OF CONTENTS

Introduction .....	3
Regional/Historical Sketch of Mineral County .....	4
Ratio Analysis.....	6
Time Trending Verification .....	8
Sold/Unsold Analysis .....	9
Agricultural Land Study .....	11
<i>Agricultural Land</i> .....	11
<i>Agricultural Outbuildings</i> .....	12
<i>Agricultural Land Under Improvements</i> .....	12
Sales Verification.....	13
Economic Area Review and Evaluation .....	14
Natural Resources .....	15
<i>Earth and Stone Products</i> .....	15
Vacant Land.....	16
Possessory Interest Properties .....	17
Personal Property Audit .....	18
Wildrose Auditor Staff.....	20
Appendices .....	21

## INTRODUCTION

---



### Colorado

The State Board of Equalization (SBOE) reviews assessments for conformance to the Constitution. The SBOE will order revaluations for counties whose valuations do not reflect the proper valuation period level of value.

The statutory basis for the audit is found in C.R.S. 39-1-104 (16)(a)(b) and (c).

The legislative council sets forth two criteria that are the focus of the audit group:

To determine whether each county assessor is applying correctly the constitutional and statutory provisions, compliance requirements of the State Board of Equalization, and the manuals published by the State Property Tax Administrator to arrive at the actual value of each class of property.

To determine if each assessor is applying correctly the provisions of law to the actual values when arriving at valuations for assessment of all locally valued properties subject to the property tax.

The property assessment audit conducts a two-part analysis: A procedural analysis and a statistical analysis.

The procedural analysis includes all classes of property and specifically looks at how the assessor develops economic areas, confirms and qualifies sales, and develops time adjustments. The audit also examines the procedures for adequately discovering, classifying and valuing agricultural outbuildings, discovering subdivision build-out and subdivision discounting procedures. Valuation methodology for vacant land, improved residential properties and commercial properties is examined. Procedures for producing mines, oil and gas leaseholds and lands producing, producing coal mines, producing earth and stone products, severed mineral interests and non-producing patented mining claims are also reviewed.

Statistical analysis is performed on vacant land, residential properties, commercial industrial properties, agricultural land, and personal property. The statistical study results are compared with State Board of Equalization compliance requirements and the manuals published by the State Property Tax Administrator.

Wildrose Audit has completed the Property Assessment Study for 2014 and is pleased to report its findings for Mineral County in the following report.

# REGIONAL/HISTORICAL SKETCH OF MINERAL COUNTY

## Regional Information

Mineral County is located in the San Luis Valley region of Colorado. The San Luis Valley is a large, broad, alpine valley in the Rio Grande Basin of south-central Colorado. The valley is drained to the south by the Rio Grande

River which rises in the San Juan Mountains to the west of the valley. The San Luis Valley includes Alamosa, Conejos, Costilla, Mineral, Rio Grande, and Saguache counties.







## Historical Information

Mineral County has a population of approximately 712 people with 0.81 people per square mile, according to the U.S. Census Bureau's 2010 census data. This represents a -14.32 percent change from the 2000 Census.

Mineral County is the third least populous of the 64 Colorado counties. The county was named for the many valuable minerals found in the mountains and streams of the area. The county seat and the only municipality in the county is the Town of Creede.

Travelers to this area appeared in the early 1800s. Tom Boggs, a brother-in-law of Kit Carson, farmed at Wagon Wheel Gap in the summer of 1840. The first silver discovery was made at the Alpha mine in 1869, but the silver could not be extracted at a profit from the complex ores. Ranchers and homesteaders moved in when stagecoach stations (linking the mining operations over the Divide with the east) were built in the 1870s, but the great "Boom Days" started with the discovery of rich minerals in Willow Creek Canyon in 1889.

Creede was the last silver boom town in Colorado in the 1800s. The town leapt from a population of 600 in 1889 to more than 10,000 people in December 1891. The Creede mines operated continuously from 1890 until 1985. The original townsite of Creede was located on East Willow Creek just above its junction with West Willow Creek. Below Creede were Stringtown, Jimtown, and Amethyst. The Willow Creek site was soon renamed Creede

after Nicholas C. Creede who discovered the Holy Moses Mine. Soon the entire town area from East Willow to Amethyst was called Creede.

Creede's boom lasted until 1893, when the Silver Panic hit all of the silver mining towns in Colorado. The price of silver plummeted and most of the silver mines were closed. Creede never became a ghost town, although the boom was over and its population declined. After 1900, Creede stayed alive by relying increasingly on lead and zinc in the ores.

Today, historic buildings and names from a bygone era mark the quaint seven-block downtown section of Creede's famous silver mining era. The spectacular Pillars of Hercules, volcanic cliffs rising nearly a thousand feet at the edge of town, frame Creede's array of shops, galleries, eateries, lodging, and sundry services. Simply viewing the old downtown area against this magnificent canyon backdrop makes a visit to Creede worthwhile in any season. A "Walking Tour" guidebook provides detailed information about Creede's historic buildings and downtown district. Being the only community in Mineral County, Creede serves as the commercial and government center for residents and visitors. Both the Mineral County Courthouse and the Creede Town Hall are located on North Main Street. Rio Grande National Forest maintains the Creede Ranger Station on South Main Street. ([www.Wikipedia.org](http://www.Wikipedia.org), [www.creede.com](http://www.creede.com))

# RATIO ANALYSIS

## Methodology

All significant classes of properties were analyzed. Sales were collected for each property class over the appropriate sale period, which was typically defined as the 18-month period between January 2011 and June 2012. Counties with less than 30 sales typically extended the sale period back up to 5 years prior to June 30, 2012 in 6-month increments. If there were still fewer than 30 sales, supplemental appraisals were performed and treated as proxy sales. Residential sales for all counties using this method totaled at least 30 per county. For commercial sales, the total number analyzed was allowed, in some cases, to fall below 30. There were no sale quantity issues for counties requiring vacant land analysis or condominium analysis. Although it was required that we examine the median and coefficient of dispersion for all counties, we also calculated the weighted mean and price-related differential for each class of property. Counties were not passed or failed by these

latter measures, but were counseled if there were anomalies noted during our analysis. Qualified sales were based on the qualification code used by each county, which were typically coded as either "Q" or "C." The ratio analysis included all sales. The data was trimmed for counties with obvious outliers using IAAO standards for data analysis. In every case, we examined the loss in data from trimming to ensure that only true outliers were excluded. Any county with a significant portion of sales excluded by this trimming method was examined further. No county was allowed to pass the audit if more than 5% of the sales were "lost" because of trimming. For the largest 11 counties, the residential ratio statistics were broken down by economic area as well.

## Conclusions

For this final analysis report, the minimum acceptable statistical standards allowed by the State Board of Equalization are:

ALLOWABLE STANDARDS RATIO GRID		
Property Class	Unweighted Median Ratio	Coefficient of Dispersion
Commercial/Industrial	Between .95-1.05	Less than 20.99
Condominium	Between .95-1.05	Less than 15.99
Single Family	Between .95-1.05	Less than 15.99
Vacant Land	Between .95-1.05	Less than 20.99

The results for Mineral County are:

<b>Mineral County Ratio Grid</b>					
<b>Property Class</b>	<b>Number of Qualified Sales</b>	<b>Unweighted Median Ratio</b>	<b>Price Related Differential</b>	<b>Coefficient of Dispersion</b>	<b>Time Trend Analysis</b>
*Commercial/Industrial	N/A	N/A	N/A	N/A	N/A
Condominium	N/A	N/A	N/A	N/A	N/A
Single Family	34	0.967	1.033	14.4	Compliant
Vacant Land	N/A	N/A	N/A	N/A	N/A

*\*Due to the small number of sales, a procedural audit was performed.*

After applying the above described methodologies, it is concluded from the sales ratios that Mineral County is in compliance

with SBOE, DPT, and Colorado State Statute valuation guidelines.

### **Recommendations**

None





# TIME TRENDING VERIFICATION

## Methodology

While we recommend that counties use the inverted ratio regression analysis method to account for market (time) trending, some counties have used other IAAO-approved methods, such as the weighted monthly median approach. We are not auditing the methods used, but rather the results of the methods used. Given this range of methodologies used to account for market trending, we concluded that the best validation method was to examine the sale ratios for each class across the appropriate sale period. To be specific, if a county has considered and adjusted correctly for market trending, then the sale ratios should remain stable (i.e. flat) across the sale period. If a residual market trend is detected, then the county may or may not have addressed market

trending adequately, and a further examination is warranted. This validation methodology also considers the number of sales and the length of the sale period. Counties with few sales across the sale period were carefully examined to determine if the statistical results were valid.

## Conclusions

After verification and analysis, it has been determined that Mineral County has complied with the statutory requirements to analyze the effects of time on value in their county. Mineral County has also satisfactorily applied the results of their time trending analysis to arrive at the time adjusted sales price (TASP).

## Recommendations

None

## SOLD / UNSOLD ANALYSIS

### Methodology

Mineral County was tested for the equal treatment of sold and unsold properties to ensure that “sales chasing” has not occurred. The auditors employed a multi-step process to determine if sold and unsold properties were valued in a consistent manner.

All qualified residential and commercial class properties were examined using the unit value method, where the actual value per square foot was compared between sold and unsold properties. A class was considered qualified if it met the criteria for the ratio analysis. The median value per square foot for both groups was compared from an appraisal and statistical perspective. If no significant difference was indicated, then we concluded that no further testing was warranted and that the county was in compliance in terms of sold/unsold consistency.

If either residential or commercial differences were significant using the unit value method, or if data limitations made the comparison invalid, then the next step was to perform a ratio analysis comparing the 2012 and 2014 actual values for each qualified class of property. All qualified vacant land classes were tested using this method. The sale property ratios were arrayed using a range of 0.8 to 1.5, which theoretically excluded changes between years that were due to other unrelated changes in the property. These ratios were also stratified at the appropriate level of analysis. Once the percent change was determined for each appropriate class and sub-class, the next step was to select the unsold sample. This sample

was at least 1% of the total population of unsold properties and excluded any sale properties. The unsold sample was filtered based on the attributes of the sold dataset to closely correlate both groups. The ratio analysis was then performed on the unsold properties and stratified. The median and mean ratio distribution was then compared between the sold and unsold group. A non-parametric test such as the Mann-Whitney test for differences between independent samples was undertaken to determine whether any observed differential was significant. If this test determined that the unsold properties were treated in a manner similar to the sold properties, it was concluded that no further testing was warranted and that the county was in compliance.

If a class or sub-class of property was determined to be significantly different by this method, the final step was to perform a multi-variate mass appraisal model that developed ratio statistics from the sold properties that were then applied to the unsold sample. This test compared the measures of central tendency and confidence intervals for the sold properties with the unsold property sample. If this comparison was also determined to be significantly different, then the conclusion was that the county had treated the unsold properties in a different manner than sold properties.

These tests were supported by both tabular and chart presentations, along with saved sold and unsold sample files.

Sold/Unsold Results	
Property Class	Results
Commercial/Industrial	N/A
Condominium	N/A
Single Family	Compliant
Vacant Land	N/A

### Conclusions

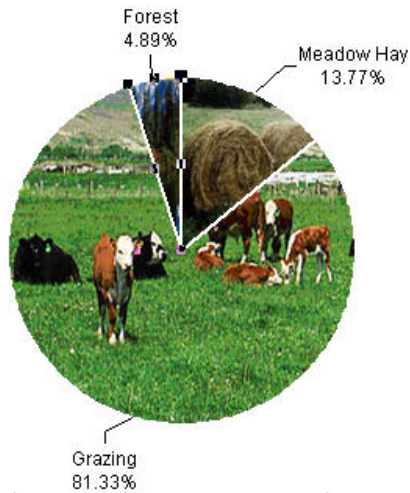
After applying the above described methodologies, it is concluded that Mineral County is reasonably treating its sold and unsold properties in the same manner.

### Recommendations

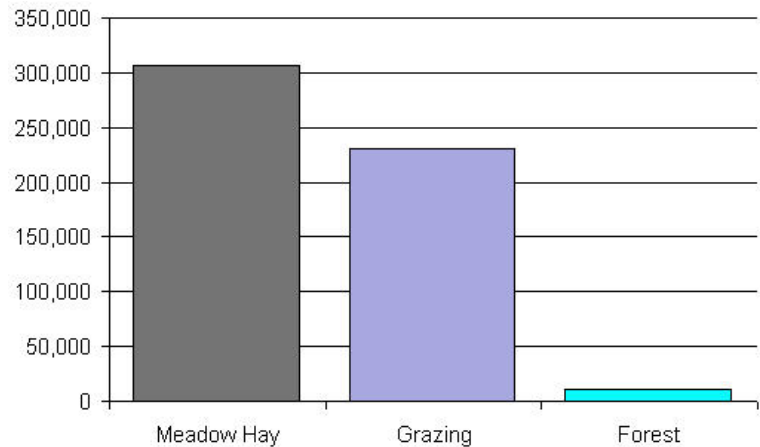
None

## AGRICULTURAL LAND STUDY

Acres By Subclass



Value By Subclass



### Agricultural Land

County records were reviewed to determine major land categories such as irrigated farm, dry farm, meadow hay, grazing and other lands. In addition, county records were reviewed in order to determine if: Aerial photographs are available and are being used; soil conservation guidelines have been used to classify lands based on productivity; crop rotations have been documented; typical commodities and yields have been determined; orchard lands have been properly classified and valued; expenses reflect a ten year average and are typical landlord expenses; grazing lands have been properly classified and valued; the number of acres in each class and subclass have been determined; the capitalization rate was properly applied. Also, documentation was required for the valuation methods used and any locally developed yields, carrying capacities, and expenses. Records were also checked to ensure that the commodity prices and expenses, furnished by the Property Tax

Administrator (PTA), were applied properly. (See Assessor Reference Library Volume 3 Chapter 5.)

#### Conclusions

An analysis of the agricultural land data indicates an acceptable appraisal of this property type. Directives, commodity prices and expenses provided by the PTA were properly applied. County yields compared favorably to those published by Colorado Agricultural Statistics. Expenses used by the county were allowable expenses and were in an acceptable range. Grazing lands carrying capacities were in an acceptable range. The data analyzed resulted in the following ratios:



Mineral County Agricultural Land Ratio Grid						
Abstract Code	Land Class	Number Of Acres	County Value Per Acre	County Assessed Total Value	WRA Total Value	Ratio
4137	Meadow Hay	3,574	86.00	307,142	307,211	1.00
4147	Grazing	21,103	11.00	230,855	230,855	1.00
4177	Forest	1,270	9.00	11,286	11,331	1.00
Total/Avg		25,947	21.00	549,283	549,397	1.00

## Recommendations

None

---

## Agricultural Outbuildings

---

### Methodology

Data was collected and reviewed to determine if the guidelines found in the Assessor's Reference Library (ARL) Volume 3, pages 5.74 through 5.77 were being followed.

### Conclusions

Mineral County has substantially complied with the procedures provided by the Division of Property Taxation for the valuation of agricultural outbuildings.

### Recommendations

None

---

## Agricultural Land Under Improvements

---

### Methodology

Data was collected and reviewed to determine if the guidelines found in the Assessor's Reference Library (ARL) Volume 3, pages 5.19 and 5.20 were being followed.

Property Taxation for the valuation of land under residential improvements that may or may not be integral to an agricultural operation.

### Recommendations

None

### Conclusions

Mineral County has substantially complied with the procedures provided by the Division of

## SALES VERIFICATION

According to Colorado Revised Statutes:

*A representative body of sales is required when considering the market approach to appraisal.*

*(8) In any case in which sales prices of comparable properties within any class or subclass are utilized when considering the market approach to appraisal in the determination of actual value of any taxable property, the following limitations and conditions shall apply:*

*(a)(I) Use of the market approach shall require a representative body of sales, including sales by a lender or government, sufficient to set a pattern, and appraisals shall reflect due consideration of the degree of comparability of sales, including the extent of similarities and dissimilarities among properties that are compared for assessment purposes. In order to obtain a reasonable sample and to reduce sudden price changes or fluctuations, all sales shall be included in the sample that reasonably reflect a true or typical sales price during the period specified in section 39-1-104 (10.2). Sales of personal property exempt pursuant to the provisions of sections 39-3-102, 39-3-103, and 39-3-119 to 39-3-122 shall not be included in any such sample.*

*(b) Each such sale included in the sample shall be coded to indicate a typical, negotiated sale, as screened and verified by the assessor. (39-1-103, C.R.S.)*

*The assessor is required to use sales of real property only in the valuation process.*

*(8)(f) Such true and typical sales shall include only those sales which have been determined on an individual basis to reflect the selling price of the real property only or which have been adjusted on an individual basis to reflect the selling price of the real property only. (39-1-103, C.R.S.)*

Part of the Property Assessment Study is the sales verification analysis. WRA has used the above-cited statutes as a guide in our study of the county's procedures and practices for verifying sales.

WRA reviewed the sales verification procedures in 2014 for Mineral County. This study was conducted by checking selected sales from the master sales list for the current valuation period. Specifically WRA selected 18 sales listed as unqualified.

All of the sales in the unqualified sales sample had reasons that were clear and supportable.

### Conclusions

Mineral County appears to be doing an excellent job of verifying their sales. WRA agreed with the county's reason for disqualifying each of the sales selected in the sample. There are no recommendations or suggestions.

### Recommendations

None



# ECONOMIC AREA REVIEW AND EVALUATION

## **Methodology**

Mineral County has submitted a written narrative describing the economic areas that make up the county's market areas. Mineral County has also submitted a map illustrating these areas. Each of these narratives have been read and analyzed for logic and appraisal sensibility. The maps were also compared to the narrative for consistency between the written description and the map.

## **Conclusions**

After review and analysis, it has been determined that Mineral County has adequately

identified homogeneous economic areas comprised of smaller neighborhoods. Each economic area defined is equally subject to a set of economic forces that impact the value of the properties within that geographic area and this has been adequately addressed. Each economic area defined adequately delineates an area that will give "similar values for similar properties in similar areas."

## **Recommendations**

None

# NATURAL RESOURCES

---

## Earth and Stone Products

---

### Methodology

Under the guidelines of the Assessor's Reference Library (ARL), Volume 3, Natural Resource Valuation Procedures, the income approach was applied to determine value for production of earth and stone products. The number of tons was multiplied by an economic royalty rate determined by the Division of Property Taxation to determine income. The income was multiplied by a recommended Hoskold factor to determine the actual value. The Hoskold factor is determined by the life of the reserves or the lease. Value is based on two

variables: life and tonnage. The operator determines these since there is no other means to obtain production data through any state or private agency.

### Conclusions

The County has applied the correct formulas and state guidelines to earth and stone production.

### Recommendations

None

## VACANT LAND

### **Subdivision Discounting**

Subdivisions were reviewed in 2014 in Mineral County. The review showed that subdivisions were discounted pursuant to the Colorado Revised Statutes in Article 39-1-103 (14) and by applying the recommended methodology in ARL Vol 3, Chap 4. Subdivision Discounting in the intervening year was accomplished by reducing the absorption period by one year.

In instances where the number of sales within an approved plat was less than the absorption

rate per year calculated for the plat, the absorption period was left unchanged.

### **Conclusions**

Mineral County has implemented proper procedures to adequately estimate absorption periods, discount rates, and lot values for qualifying subdivisions.

### **Recommendations**

None

## POSSESSORY INTEREST PROPERTIES

### Possessory Interest

Possessory interest property discovery and valuation is described in the Assessor's Reference Library (ARL) Volume 3 section 7 in accordance with the requirements of Chapter 39-1-103 (17)(a) (II) C.R.S. Possessory Interest is defined by the Property Tax Administrator's Publication ARL Volume 3, Chapter 7: A private property interest in government-owned property or the right to the occupancy and use of any benefit in government-owned property that has been granted under lease, permit, license, concession, contract, or other agreement.

Mineral County has been reviewed for their procedures and adherence to guidelines when assessing and valuing agricultural, commercial

and ski area possessory interest properties. The county has also been queried as to their confidence that the possessory interest properties have been discovered and placed on the tax rolls.

### Conclusions

Mineral County has implemented a discovery process to place possessory interest properties on the roll. They have also correctly and consistently applied the correct procedures and valuation methods in the valuation of possessory interest properties.

### Recommendations

None

## PERSONAL PROPERTY AUDIT

Mineral County was studied for its procedural compliance with the personal property assessment outlined in the Assessor's Reference Library (ARL) Volume 5, and in the State Board of Equalization (SBOE) requirements for the assessment of personal property. The SBOE requires that counties use ARL Volume 5, including current discovery, classification, documentation procedures, current economic lives table, cost factor tables, depreciation table, and level of value adjustment factor table.

The personal property audit standards narrative must be in place and current. A listing of businesses that have been audited by the assessor within the twelve-month period reflected in the plan is given to the auditor. The audited businesses must be in conformity with those described in the plan.

Aggregate ratio will be determined solely from the personal property accounts that have been physically inspected. The minimum assessment sample is one percent or ten schedules, whichever is greater, and the maximum assessment audit sample is 100 schedules.

For the counties having over 100,000 population, WRA selected a sample of all personal property schedules to determine whether the assessor is correctly applying the provisions of law and manuals of the Property Tax Administrator in arriving at the assessment levels of such property. This sample was selected from the personal property schedules audited by the assessor. In no event was the sample selected by the contractor less than 30 schedules. The counties to be included in this study are Adams, Arapahoe, Boulder, Denver, Douglas, El Paso, Jefferson, Larimer, Mesa, Pueblo, and Weld. All other counties received a procedural study.

Mineral County is compliant with the guidelines set forth in ARL Volume 5 regarding discovery procedures, using the following methods to discover personal property accounts in the county:

- Public Record Documents
- Personal Observation, Physical Canvassing or Word of Mouth
- Questionnaires, Letters and/or Phone Calls to Buyer, Seller and/or Realtor

The county uses the Division of Property Taxation (DPT) recommended classification and documentation procedures. The DPT's recommended cost factor tables, depreciation tables and level of value adjustment factor tables are also used.

Mineral County submitted their personal property written audit plan and was current for the 2014 valuation period. The number and listing of businesses audited was also submitted and was in conformance with the written audit plan. The following audit triggers were used by the county to select accounts to be audited:

- Accounts with greater than 10% change
- Same business type or use
- Non-filing Accounts - Best Information Available
- Accounts close to the \$7,000 actual value exemption status

### Conclusions

Mineral County has employed adequate discovery, classification, documentation, valuation, and auditing procedures for their



personal property assessment and is in statistical compliance with SBOE requirements.

**Recommendations**

None



## WILDROSE AUDITOR STAFF

**Harry J. Fuller**, *Audit Project Manager*

**Suzanne Howard**, *Audit Administrative Manager*

**Steve Kane**, *Audit Statistician*

**Carl W. Ross**, *Agricultural/Natural Resource Analyst*

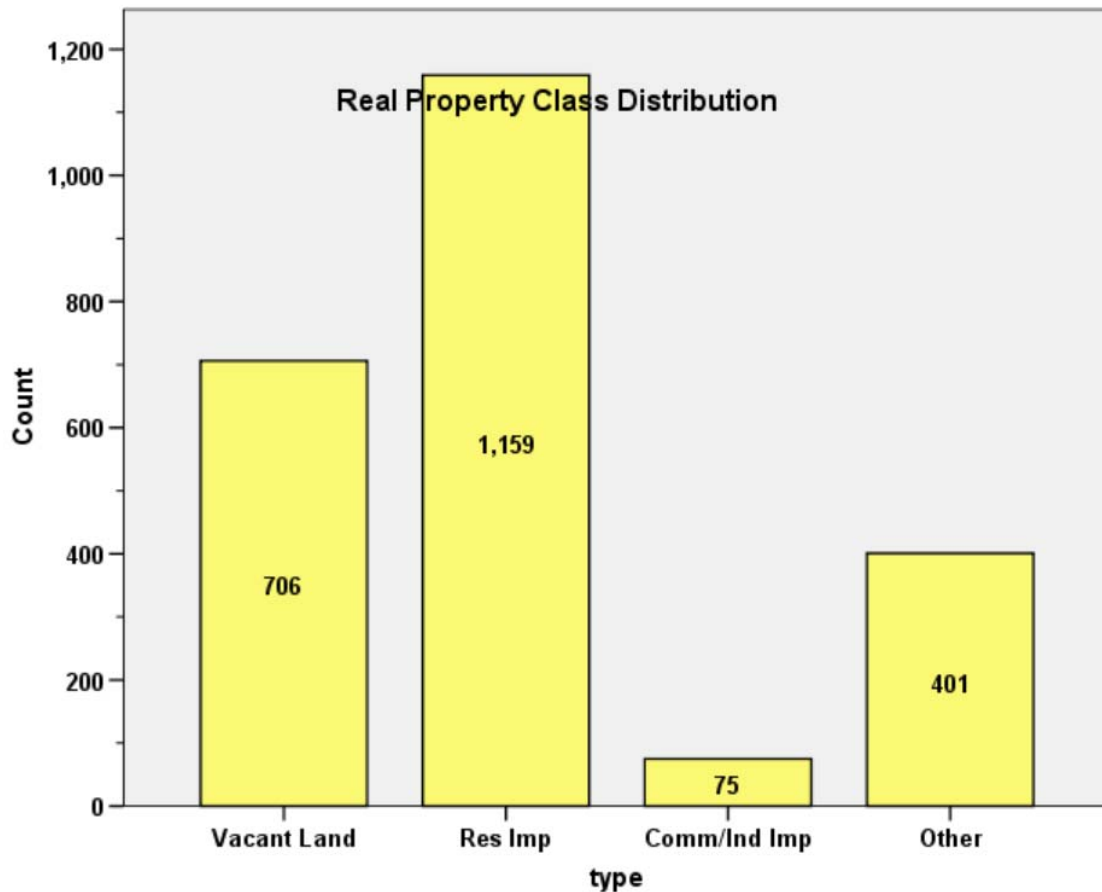
**J. Andrew Rodriguez**, *Field Analyst*

# APPENDICES

## STATISTICAL COMPLIANCE REPORT FOR MINERAL COUNTY 2014

### I. OVERVIEW

Mineral County is located in southwestern Colorado. The county has a total of 2,341 real property parcels, according to data submitted by the county assessor's office in 2014. The following provides a breakdown of property classes for this county:



The vacant land class of properties was dominated by residential land. Residential lots (coded 100 and 1112) accounted for 73.8% of all vacant land parcels. Based on the number of vacant land parcels in Mineral County, we were not required to analyze this class of property for audit compliance.

For residential improved properties, single family properties accounted for 95.9% of all residential properties.

Commercial and industrial properties represented a much smaller proportion of property classes in comparison. Commercial/industrial sales accounted for 3.2% of all such properties in this county.

## II. DATA FILES

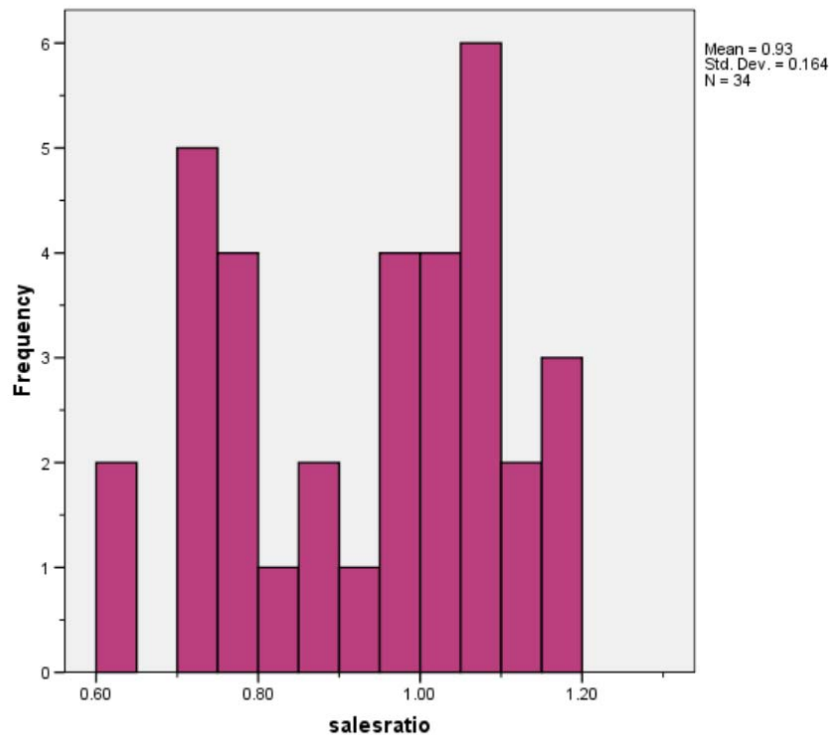
The following sales analyses were based on the requirements of the 2014 Colorado Property Assessment Study. Information was provided by the Mineral Assessor's Office in June 2014. The data included all 5 property record files as specified by the Auditor.

## III. RESIDENTIAL SALES RESULTS

There were 34 total qualified residential sales over the 3 year period prior to June 30, 2014. The residential sales ratio analysis results were as follows:

Median	<b>0.967</b>
Price Related Differential	<b>1.033</b>
Coefficient of Dispersion	<b>.144</b>

The above median ratio results and COD results were in compliance as set for by the Colorado SBOE. The following graphs indicate the sales ratio distribution for qualified residential sales:





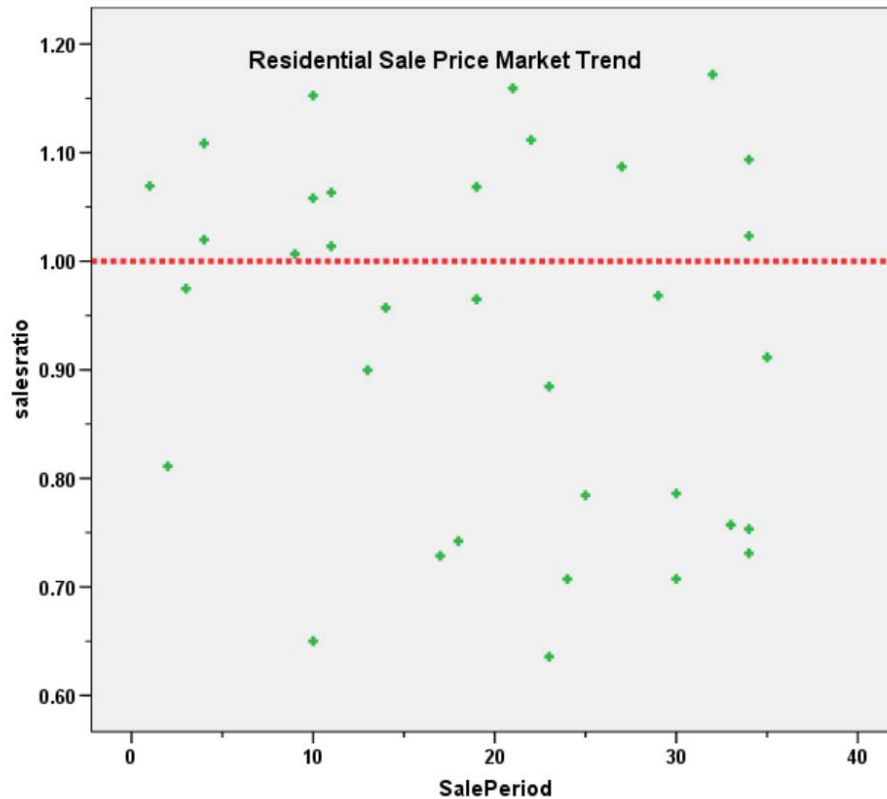
### Residential Market Trend Analysis

We next analyzed the residential dataset using the 36-month sale period, tracing the sales ratio pattern over the sale period. The following results indicate that there was no significant residual market trend pattern in the sales ratio, based on the magnitude of the slope coefficient:

**Coefficients<sup>a</sup>**

Model	Unstandardized Coefficients		Standardized Coefficients	t	Sig.
	B	Std. Error	Beta		
1 (Constant)	.998	.058		17.253	.000
SalePeriod	-.004	.003	-.235	-1.370	.180

a. Dependent Variable: salesratio



The above results indicate that the assessor has adequately addressed market trending in their residential valuation for this sale period.

### Sold/Unsold Analysis

In terms of the valuation consistency between sold and unsold residential properties, we compared the median change in value between 2012 and 2014 for each group, as follows:

Group	No. Props	Median Chg Val	Mean Chg Val
Unsold	1,096	1.0000	1.0146
Sold	34	1.0102	1.0343

Based the second test, we concluded that the assessor has valued sold and unsold residential properties consistently in 2014.

## IV. COMMERCIAL/INDUSTRIAL SALE RESULTS

Due to the fact that there were less than 10 commercial/industrial sales in this County between July 2007 and June 2012, this class of properties was not analyzed for sales ratio compliance.



## V. AGRICULTURAL IMPROVEMENTS ANALYSIS

The final statistical verification concerned the assigned actual values for agricultural residential improvements. We compared the actual value per square foot rate for this group and compared it to rates assigned to residential single family improvements in Mineral County.

The following indicates that agricultural residential improvements were valued in a manner similar to the single family residential improvements in this county:

<u>Descriptives</u>				
<u>ABSTRIMP</u>			Statistic	Std. Error
<u>impValSF</u>	1212	Mean	\$53.65	\$2.142
		95% Confidence Interval for Lower Bound	\$49.37	
		Mean Upper Bound	\$57.93	
		5% Trimmed Mean	\$52.99	
		Median	\$53.06	
		Variance	289.015	
		Std. Deviation	\$17.000	
		Minimum	\$16	
		Maximum	\$104	
		Range	\$88	
		Interquartile Range	\$20	
		<u>Skewness</u>	.610	.302
		Kurtosis	.771	.595
	4277	Mean	\$41.70	\$8.907
		95% Confidence Interval for Lower Bound	\$21.16	
		Mean Upper Bound	\$62.24	
		5% Trimmed Mean	\$40.08	
		Median	\$37.61	
		Variance	713.971	
		Std. Deviation	\$26.720	
		Minimum	\$7	
		Maximum	\$105	
		Range	\$98	
		Interquartile Range	\$18	
		<u>Skewness</u>	1.764	.717
		Kurtosis	4.713	1.400

## VI. CONCLUSIONS

Based on this statistical analysis, there were no significant compliance issues concluded for Mineral County as of the date of this report.

## **STATISTICAL ABSTRACT**

### **Residential**

**Ratio Statistics for CURRTOT / TASP**

Mean	95% Confidence Interval for Mean		Median	95% Confidence Interval for Median			Weighted Mean	95% Confidence Interval for Weighted Mean		Price Related Differential	Coefficient of Dispersion	Coefficient of Variation
	Lower Bound	Upper Bound		Lower Bound	Upper Bound	Actual Coverage		Lower Bound	Upper Bound			Mean Centered
.928	.871	.985	.967	.786	1.058	97.6%	.899	.839	.958	1.033	.144	17.6%

The confidence interval for the median is constructed without any distribution assumptions. The actual coverage level may be greater than the specified level. Other confidence intervals are constructed by assuming a Normal distribution for the ratios.

### **Commercial/Industrial**

Not applicable

### **Vacant Land**

Not applicable



### Residential Median Ratio Stratification

#### Sale Price

##### Case Processing Summary

	Count	Percent
SPRec \$50K to \$100K	2	5.9%
\$100K to \$150K	5	14.7%
\$150K to \$200K	9	26.5%
\$200K to \$300K	8	23.5%
\$300K to \$500K	9	26.5%
\$500K to \$750K	1	2.9%
Overall	34	100.0%
Excluded	0	
Total	34	

##### Ratio Statistics for CURRTOT / TASP

Group	Median	Price Related Differential	Coefficient of Dispersion	Coefficient of Variation
				Median Centered
\$50K to \$100K	1.022	1.005	.046	6.5%
\$100K to \$150K	1.068	.993	.137	22.4%
\$150K to \$200K	1.058	1.001	.093	13.1%
\$200K to \$300K	.890	1.007	.176	20.8%
\$300K to \$500K	.784	1.005	.152	19.3%
\$500K to \$750K	.885	1.000	.000	.%
Overall	.967	1.033	.144	17.4%

## Sub-Class

### Case Processing Summary

	Count	Percent
ABSTRIMP 1212	34	100.0%
Overall	34	100.0%
Excluded	0	
Total	34	

### Ratio Statistics for CURRTOT / TASP

Group	Median	Price Related Differential	Coefficient of Dispersion	Coefficient of Variation
				Median Centered
1212	.967	1.033	.144	17.4%
Overall	.967	1.033	.144	17.4%

## Improvement Age

**Case Processing Summary**

	Count	Percent
AgeRec Over 100	2	5.9%
75 to 100	3	8.8%
25 to 50	7	20.6%
5 to 25	18	52.9%
5 or Newer	4	11.8%
Overall	34	100.0%
Excluded	0	
Total	34	

**Ratio Statistics for CURRTOT / TASP**

Group	Median	Price Related Differential	Coefficient of Dispersion	Coefficient of Variation
				Median Centered
Over 100	.828	.985	.086	12.2%
75 to 100	1.069	.986	.042	6.8%
25 to 50	.957	.980	.140	18.0%
5 to 25	.967	1.052	.162	19.6%
5 or Newer	.913	1.020	.120	13.9%
Overall	.967	1.033	.144	17.4%

## Improvement Size

**Case Processing Summary**

	Count	Percent
ImpSFRec 500 to 1,000 sf	3	8.8%
1,000 to 1,500 sf	12	35.3%
1,500 to 2,000 sf	10	29.4%
2,000 to 3,000 sf	8	23.5%
3,000 sf or Higher	1	2.9%
Overall	34	100.0%
Excluded	0	
Total	34	

**Ratio Statistics for CURRTOT / TASP**

Group	Median	Price Related Differential	Coefficient of Dispersion	Coefficient of Variation
				Median Centered
500 to 1,000 sf	.957	1.014	.077	15.1%
1,000 to 1,500 sf	1.039	.996	.104	15.2%
1,500 to 2,000 sf	.934	1.035	.172	20.1%
2,000 to 3,000 sf	.898	1.027	.145	18.1%
3,000 sf or Higher	.707	1.000	.000	.%
Overall	.967	1.033	.144	17.4%

## Improvement Quality

**Case Processing Summary**

		Count	Percent
QUALITY	ABOVE AVG.	5	14.7%
	AVERAGE	15	44.1%
	BELOW AVG.	1	2.9%
	GOOD	13	38.2%
Overall		34	100.0%
Excluded		0	
Total		34	

**Ratio Statistics for CURRTOT / TASP**

Group	Median	Price Related Differential	Coefficient of Dispersion	Coefficient of Variation
				Median Centered
ABOVE AVG.	.912	1.036	.132	18.6%
AVERAGE	1.014	1.009	.138	18.5%
BELOW AVG.	1.069	1.000	.000	.%
GOOD	.900	1.026	.141	16.8%
Overall	.967	1.033	.144	17.4%

## Improvement Condition

**Case Processing Summary**

		Count	Percent
CONDITION	AVERAGE	34	100.0%
Overall		34	100.0%
Excluded		0	
Total		34	

**Ratio Statistics for CURRTOT / TASP**

Group	Median	Price Related Differential	Coefficient of Dispersion	Coefficient of Variation
				Median Centered
AVERAGE	.967	1.033	.144	17.4%
Overall	.967	1.033	.144	17.4%

## Commercial Median Ratio Stratification

Not applicable

## Vacant Land Median Ratio Stratification

Not applicable