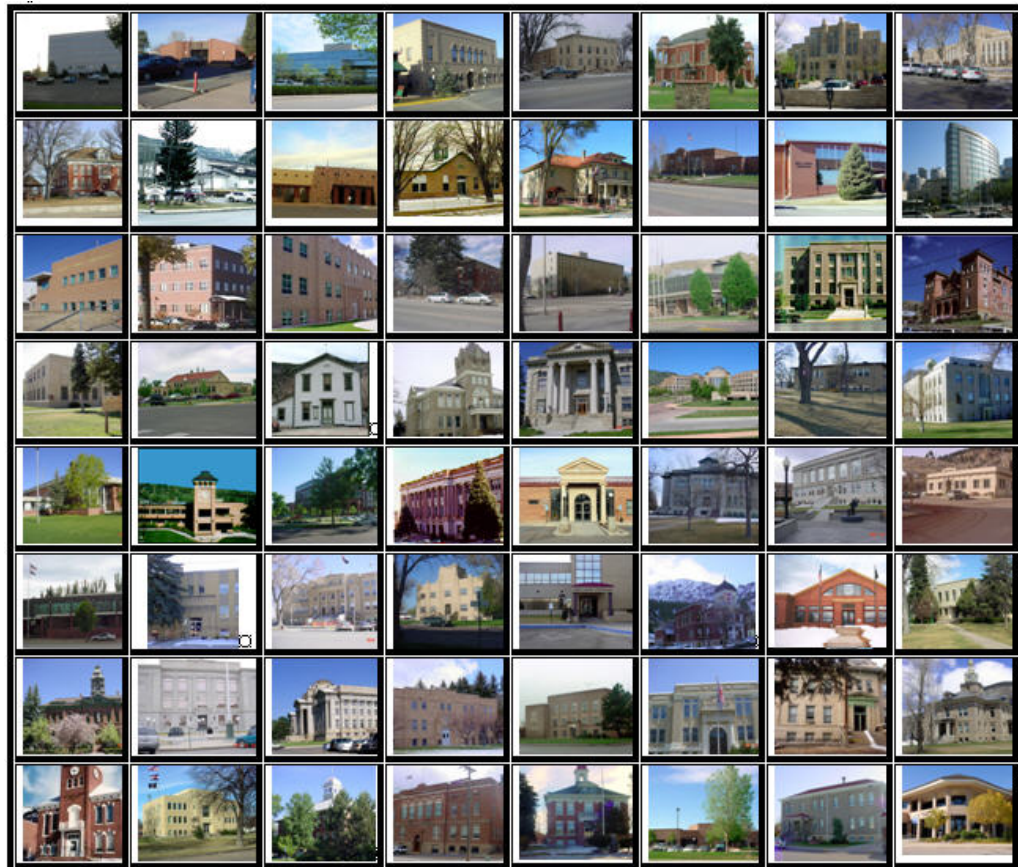




2014

LAS ANIMAS COUNTY PROPERTY ASSESSMENT STUDY



WILDROSE
APPRAISAL, INCORPORATED
Audit Division



September 15, 2014

Mr. Mike Mauer
Director of Research
Colorado Legislative Council
Room 029, State Capitol Building
Denver, Colorado 80203

RE: Final Report for the 2014 Colorado Property Assessment Study

Dear Mr. Mauer:

Wildrose Appraisal Inc.-Audit Division is pleased to submit the Final Reports for the 2014 Colorado Property Assessment Study.

These reports are the result of two analyses: A procedural audit and a statistical audit.

The procedural audit examines all classes of property. It specifically looks at how the assessor develops economic areas, confirms and qualifies sales, develops time adjustments and performs periodic physical property inspections. The audit reviews the procedures for determining subdivision absorption and subdivision discounting. Valuation methodology is examined for residential properties and commercial properties. Procedures are reviewed for producing mines, oil and gas leaseholds and lands producing, producing coal mines, producing earth and stone products, severed mineral interests, and non-producing patented mining claims.

Statistical audits are performed on vacant land, residential properties, commercial/industrial properties and agricultural land. A statistical analysis is performed for personal property compliance on the eleven largest counties: Adams, Arapahoe, Boulder, Denver, Douglas, El Paso, Jefferson, Larimer, Mesa, Pueblo and Weld. The remaining counties receive a personal property procedural study.

Wildrose Appraisal Inc. – Audit Division appreciates the opportunity to be of service to the State of Colorado. Please contact us with any questions or concerns.

A handwritten signature in black ink that reads "Harry J. Fuller". The signature is written in a cursive style.

Harry J. Fuller
Project Manager
Wildrose Appraisal Inc. – Audit Division

TABLE OF CONTENTS

Introduction	3
Regional/Historical Sketch of Las Animas County	4
Ratio Analysis.....	6
Time Trending Verification	8
Sold/Unsold Analysis	9
Agricultural Land Study	11
<i>Agricultural Land</i>	11
<i>Agricultural Outbuildings</i>	12
<i>Agricultural Land Under Improvements</i>	12
Sales Verification.....	13
Economic Area Review and Evaluation	14
Natural Resources	15
<i>Earth and Stone Products</i>	15
<i>Producing Oil and Gas</i>	15
Vacant Land.....	16
<i>Las Animas County is exempt from the Vacant Land Subdivision Discount Study</i>	16
Possessory Interest Properties	17
Personal Property Audit	18
Wildrose Auditor Staff.....	20
Appendices.....	21

INTRODUCTION



Colorado

The State Board of Equalization (SBOE) reviews assessments for conformance to the Constitution. The SBOE will order revaluations for counties whose valuations do not reflect the proper valuation period level of value.

The statutory basis for the audit is found in C.R.S. 39-1-104 (16)(a)(b) and (c).

The legislative council sets forth two criteria that are the focus of the audit group:

To determine whether each county assessor is applying correctly the constitutional and statutory provisions, compliance requirements of the State Board of Equalization, and the manuals published by the State Property Tax Administrator to arrive at the actual value of each class of property.

To determine if each assessor is applying correctly the provisions of law to the actual values when arriving at valuations for assessment of all locally valued properties subject to the property tax.

The property assessment audit conducts a two-part analysis: A procedural analysis and a statistical analysis.

The procedural analysis includes all classes of property and specifically looks at how the assessor develops economic areas, confirms and qualifies sales, and develops time adjustments. The audit also examines the procedures for adequately discovering, classifying and valuing agricultural outbuildings, discovering subdivision build-out and subdivision discounting procedures. Valuation methodology for vacant land, improved residential properties and commercial properties is examined. Procedures for producing mines, oil and gas leaseholds and lands producing, producing coal mines, producing earth and stone products, severed mineral interests and non-producing patented mining claims are also reviewed.

Statistical analysis is performed on vacant land, residential properties, commercial industrial properties, agricultural land, and personal property. The statistical study results are compared with State Board of Equalization compliance requirements and the manuals published by the State Property Tax Administrator.

Wildrose Audit has completed the Property Assessment Study for 2014 and is pleased to report its findings for Las Animas County in the following report.

REGIONAL/HISTORICAL SKETCH OF LAS ANIMAS COUNTY

Regional Information

Las Animas County is located in the Central Mountains region of Colorado. The Central Mountains Region is in the central portion of Colorado. It extends from the northern Gilpin county boundary approximately 210 miles

southeasterly to the southern boundary of Colorado, including Chaffee, Clear Creek, Custer, Fremont, Gilpin, Huerfano, Lake, Las Animas, Park, and Teller counties.



Historical Information

Las Animas County has a population of approximately 15,507 people with 3.25 people per square mile, according to the U.S. Census Bureau's 2010 census data. This represents a 1.97 percent change from the 2000 Census.

Las Animas County is the largest of the 64 counties in Colorado and takes its name from the Spanish language name of the Animas River, Río de las Ánimas Perdidas, which means "River of the Lost Souls."

The City of Trinidad was founded in 1876, and was slated as a possible capitol for the State of Colorado. Due to many circumstances that dream did not come into fruition, but it is the County seat of Las Animas County. During the height of the cattle industry based around the Santa Fe Trail, around 1881, Trinidad was home to Bat Masterson, the Earps, Doc Holiday, and many other well-known personages.

During the 1900's the industry shifted to Coal Mining and was supported by the railroad industry. Coal camps spread throughout the Purgatoire Valley and many of the surrounding canyons.

The largest habitat acquisition to date for both the Rocky Mountain Elk Foundation and the Colorado Division of Wildlife, the Bosque del Oso State Wildlife Area, is located in Las Animas County. This area protects nearly 30,000 acres of critical habitat and provides winter range for animals for Colorado's second-largest elk herd, along with habitat for mule deer, bears, turkeys, bobcats, bald eagles and trout. Now, as a public wildlife area, many generations will enjoy the Bosque's open spaces, wildlife, scenery and recreational opportunities.

(Wikipedia.org, www.trinidadco.co, trinidadchamber.com)

RATIO ANALYSIS

Methodology

All significant classes of properties were analyzed. Sales were collected for each property class over the appropriate sale period, which was typically defined as the 18-month period between January 2011 and June 2012. Counties with less than 30 sales typically extended the sale period back up to 5 years prior to June 30, 2012 in 6-month increments. If there were still fewer than 30 sales, supplemental appraisals were performed and treated as proxy sales. Residential sales for all counties using this method totaled at least 30 per county. For commercial sales, the total number analyzed was allowed, in some cases, to fall below 30. There were no sale quantity issues for counties requiring vacant land analysis or condominium analysis. Although it was required that we examine the median and coefficient of dispersion for all counties, we also calculated the weighted mean and price-related differential for each class of property. Counties were not passed or failed by these

latter measures, but were counseled if there were anomalies noted during our analysis. Qualified sales were based on the qualification code used by each county, which were typically coded as either “Q” or “C.” The ratio analysis included all sales. The data was trimmed for counties with obvious outliers using IAAO standards for data analysis. In every case, we examined the loss in data from trimming to ensure that only true outliers were excluded. Any county with a significant portion of sales excluded by this trimming method was examined further. No county was allowed to pass the audit if more than 5% of the sales were “lost” because of trimming. For the largest 11 counties, the residential ratio statistics were broken down by economic area as well.

Conclusions

For this final analysis report, the minimum acceptable statistical standards allowed by the State Board of Equalization are:

ALLOWABLE STANDARDS RATIO GRID		
Property Class	Unweighted Median Ratio	Coefficient of Dispersion
Commercial/Industrial	Between .95-1.05	Less than 20.99
Condominium	Between .95-1.05	Less than 15.99
Single Family	Between .95-1.05	Less than 15.99
Vacant Land	Between .95-1.05	Less than 20.99

The results for Las Animas County are:

Las Animas County Ratio Grid					
Property Class	Number of Qualified Sales	Unweighted Median Ratio	Price Related Differential	Coefficient of Dispersion	Time Trend Analysis
Commercial/Industrial	32	0.993	0.970	11.1	Compliant
Condominium	N/A	N/A	N/A	N/A	N/A
Single Family	161	0.983	1.051	10.7	Compliant
Vacant Land	32	1.024	1.081	18.3	Compliant

After applying the above described methodologies, it is concluded from the sales ratios that Las Animas County is in compliance

with SBOE, DPT, and Colorado State Statute valuation guidelines.

Recommendations

None



TIME TRENDING VERIFICATION

Methodology

While we recommend that counties use the inverted ratio regression analysis method to account for market (time) trending, some counties have used other IAAO-approved methods, such as the weighted monthly median approach. We are not auditing the methods used, but rather the results of the methods used. Given this range of methodologies used to account for market trending, we concluded that the best validation method was to examine the sale ratios for each class across the appropriate sale period. To be specific, if a county has considered and adjusted correctly for market trending, then the sale ratios should remain stable (i.e. flat) across the sale period. If a residual market trend is detected, then the county may or may not have addressed market trending adequately, and a further examination

is warranted. This validation methodology also considers the number of sales and the length of the sale period. Counties with few sales across the sale period were carefully examined to determine if the statistical results were valid.

Conclusions

After verification and analysis, it has been determined that Las Animas County has complied with the statutory requirements to analyze the effects of time on value in their county. Las Animas County has also satisfactorily applied the results of their time trending analysis to arrive at the time adjusted sales price (TASP).

Recommendations

None

SOLD / UNSOLD ANALYSIS

Methodology

Las Animas County was tested for the equal treatment of sold and unsold properties to ensure that “sales chasing” has not occurred. The auditors employed a multi-step process to determine if sold and unsold properties were valued in a consistent manner.

All qualified residential and commercial class properties were examined using the unit value method, where the actual value per square foot was compared between sold and unsold properties. A class was considered qualified if it met the criteria for the ratio analysis. The median value per square foot for both groups was compared from an appraisal and statistical perspective. If no significant difference was indicated, then we concluded that no further testing was warranted and that the county was in compliance in terms of sold/unsold consistency.

If either residential or commercial differences were significant using the unit value method, or if data limitations made the comparison invalid, then the next step was to perform a ratio analysis comparing the 2012 and 2014 actual values for each qualified class of property. All qualified vacant land classes were tested using this method. The sale property ratios were arrayed using a range of 0.8 to 1.5, which theoretically excluded changes between years that were due to other unrelated changes in the property. These ratios were also stratified at the appropriate level of analysis. Once the percent change was determined for each appropriate class and sub-class, the next step was to select the unsold sample. This sample

was at least 1% of the total population of unsold properties and excluded any sale properties. The unsold sample was filtered based on the attributes of the sold dataset to closely correlate both groups. The ratio analysis was then performed on the unsold properties and stratified. The median and mean ratio distribution was then compared between the sold and unsold group. A non-parametric test such as the Mann-Whitney test for differences between independent samples was undertaken to determine whether any observed differential was significant. If this test determined that the unsold properties were treated in a manner similar to the sold properties, it was concluded that no further testing was warranted and that the county was in compliance.

If a class or sub-class of property was determined to be significantly different by this method, the final step was to perform a multi-variate mass appraisal model that developed ratio statistics from the sold properties that were then applied to the unsold sample. This test compared the measures of central tendency and confidence intervals for the sold properties with the unsold property sample. If this comparison was also determined to be significantly different, then the conclusion was that the county had treated the unsold properties in a different manner than sold properties.

These tests were supported by both tabular and chart presentations, along with saved sold and unsold sample files.

Sold/Unsold Results	
Property Class	Results
Commercial/Industrial	Compliant
Condominium	N/A
Single Family	Compliant
Vacant Land	Compliant

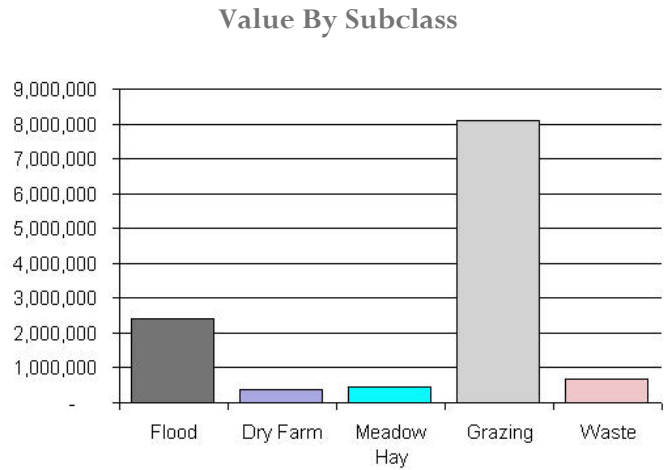
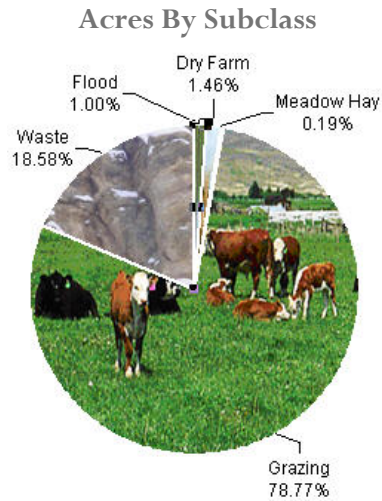
Conclusions

After applying the above described methodologies, it is concluded that Las Animas County is reasonably treating its sold and unsold properties in the same manner.

Recommendations

None

AGRICULTURAL LAND STUDY



Agricultural Land

County records were reviewed to determine major land categories such as irrigated farm, dry farm, meadow hay, grazing and other lands. In addition, county records were reviewed in order to determine if: Aerial photographs are available and are being used; soil conservation guidelines have been used to classify lands based on productivity; crop rotations have been documented; typical commodities and yields have been determined; orchard lands have been properly classified and valued; expenses reflect a ten year average and are typical landlord expenses; grazing lands have been properly classified and valued; the number of acres in each class and subclass have been determined; the capitalization rate was properly applied. Also, documentation was required for the valuation methods used and any locally developed yields, carrying capacities, and expenses. Records were also checked to ensure that the commodity prices and expenses, furnished by the Property Tax Administrator (PTA), were applied properly.

(See Assessor Reference Library Volume 3 Chapter 5.)

Conclusions

An analysis of the agricultural land data indicates an acceptable appraisal of this property type. Directives, commodity prices and expenses provided by the PTA were properly applied. County yields compared favorably to those published by Colorado Agricultural Statistics. Expenses used by the county were allowable expenses and were in an acceptable range. Grazing lands carrying capacities were in an acceptable range. The data analyzed resulted in the following ratios:

Las Animas County Agricultural Land Ratio Grid						
Abstract Code	Land Class	Number Of Acres	County Value Per Acre	County Assessed Total Value	WRA Total Value	Ratio
4117	Flood	20,864	115.00	2,397,200	2,369,938	1.01
4127	Dry Farm	30,511	13.00	387,505	390,686	0.99
4137	Meadow Hay	3,956	119.00	469,990	469,990	1.00
4147	Grazing	1,646,481	5.00	8,080,772	8,080,772	1.00
4167	Waste	388,308	2.00	677,821	677,821	1.00
Total/Avg		2,090,120	6.00	12,013,289	11,989,208	1.00

Recommendations

None

Agricultural Outbuildings

Methodology

Data was collected and reviewed to determine if the guidelines found in the Assessor's Reference Library (ARL) Volume 3, pages 5.74 through 5.77 were being followed.

Conclusions

Las Animas County has substantially complied with the procedures provided by the Division of Property Taxation for the valuation of agricultural outbuildings.

Recommendations

None

Agricultural Land Under Improvements

Methodology

Data was collected and reviewed to determine if the guidelines found in the Assessor's Reference Library (ARL) Volume 3, pages 5.19 and 5.20 were being followed.

of Property Taxation for the valuation of land under residential improvements that may or may not be integral to an agricultural operation.

Recommendations

None

Conclusions

Las Animas County has substantially complied with the procedures provided by the Division

SALES VERIFICATION

According to Colorado Revised Statutes:

A representative body of sales is required when considering the market approach to appraisal.

(8) In any case in which sales prices of comparable properties within any class or subclass are utilized when considering the market approach to appraisal in the determination of actual value of any taxable property, the following limitations and conditions shall apply:

(a)(I) Use of the market approach shall require a representative body of sales, including sales by a lender or government, sufficient to set a pattern, and appraisals shall reflect due consideration of the degree of comparability of sales, including the extent of similarities and dissimilarities among properties that are compared for assessment purposes. In order to obtain a reasonable sample and to reduce sudden price changes or fluctuations, all sales shall be included in the sample that reasonably reflect a true or typical sales price during the period specified in section 39-1-104 (10.2). Sales of personal property exempt pursuant to the provisions of sections 39-3-102, 39-3-103, and 39-3-119 to 39-3-122 shall not be included in any such sample.

(b) Each such sale included in the sample shall be coded to indicate a typical, negotiated sale, as screened and verified by the assessor. (39-1-103, C.R.S.)

The assessor is required to use sales of real property only in the valuation process.

(8)(f) Such true and typical sales shall include only those sales which have been determined on an individual basis to reflect the selling price of the real property only or which have been adjusted on an individual basis to reflect the selling price of the real property only. (39-1-103, C.R.S.)

Part of the Property Assessment Study is the sales verification analysis. WRA has used the above-cited statutes as a guide in our study of the county's procedures and practices for verifying sales.

WRA reviewed the sales verification procedures in 2014 for Las Animas County. This study was conducted by checking selected sales from the master sales list for the current valuation period. Specifically WRA selected 30 sales listed as unqualified.

All of the sales in the unqualified sales sample had reasons that were clear and supportable.

Conclusions

Las Animas County appears to be doing an excellent job of verifying their sales. WRA agreed with the county's reason for disqualifying each of the sales selected in the sample. There are no recommendations or suggestions.

Recommendations

None

ECONOMIC AREA REVIEW AND EVALUATION

Methodology

Las Animas County has submitted a written narrative describing the economic areas that make up the county's market areas. Las Animas County has also submitted a map illustrating these areas. Each of these narratives have been read and analyzed for logic and appraisal sensibility. The maps were also compared to the narrative for consistency between the written description and the map.

Conclusions

After review and analysis, it has been determined that Las Animas County has

adequately identified homogeneous economic areas comprised of smaller neighborhoods. Each economic area defined is equally subject to a set of economic forces that impact the value of the properties within that geographic area and this has been adequately addressed. Each economic area defined adequately delineates an area that will give "similar values for similar properties in similar areas."

Recommendations

None

NATURAL RESOURCES

Earth and Stone Products

Methodology

Under the guidelines of the Assessor's Reference Library (ARL), Volume 3, Natural Resource Valuation Procedures, the income approach was applied to determine value for production of earth and stone products. The number of tons was multiplied by an economic royalty rate determined by the Division of Property Taxation to determine income. The income was multiplied by a recommended Hoskold factor to determine the actual value. The Hoskold factor is determined by the life of the reserves or the lease. Value is based on two variables: life and tonnage. The operator determines these since there is no other means to obtain production data through any state or private agency.

Conclusions

The County has applied the correct formulas and state guidelines to earth and stone production.

Recommendations

None

Producing Oil and Gas

Methodology

Assessors Reference Library (ARL) Volume 3, Chapter 6: Valuation of Natural Resources

STATUTORY REFERENCES

Section § 39-1-103, C.R.S., specifies that producing oil or gas leaseholds and lands are valued according to article 7 of title 39, C.R.S.

Actual value determined - when.

(2) The valuation for assessment of leaseholds and lands producing oil or gas shall be determined as provided in article 7 of this title.

§ 39-1-103, C.R.S.

Article 7 covers the listing, valuation, and assessment of producing oil and gas leaseholds and lands.

Valuation:

Valuation for assessment.

(1) Except as provided in subsection (2) of this section, on the basis of the information contained in such statement, the assessor shall value such oil and gas leaseholds and lands for assessment, as real property, at an amount equal to eighty-seven and one-half percent of:

(a) The selling price of the oil or gas sold there from during the preceding calendar year, after excluding the selling price of all oil or gas delivered to the United States government or any agency thereof, the state of Colorado or any agency thereof, or any political subdivision of the state as royalty during the preceding calendar year;

(b) The selling price of oil or gas sold in the same field area for oil or gas transported from the premises which is not sold during the preceding calendar year, after excluding the selling price of all oil or gas delivered to the United States government or any agency thereof, the state of Colorado or any agency thereof, or any political subdivision of the state as royalty during the preceding calendar year.

§ 39-7-102, C.R.S.

Conclusions

The county applied approved appraisal procedures in the valuation of oil and gas.

Recommendations

None

VACANT LAND

**Las Animas County is exempt from the Vacant Land Subdivision
Discount Study.**

POSSESSORY INTEREST PROPERTIES

Possessory Interest

Possessory interest property discovery and valuation is described in the Assessor's Reference Library (ARL) Volume 3 section 7 in accordance with the requirements of Chapter 39-1-103 (17)(a) (II) C.R.S. Possessory Interest is defined by the Property Tax Administrator's Publication ARL Volume 3, Chapter 7: A private property interest in government-owned property or the right to the occupancy and use of any benefit in government-owned property that has been granted under lease, permit, license, concession, contract, or other agreement.

Las Animas County has been reviewed for their procedures and adherence to guidelines when assessing and valuing agricultural and

commercial possessory interest properties. The county has also been queried as to their confidence that the possessory interest properties have been discovered and placed on the tax rolls.

Conclusions

Las Animas County has implemented a discovery process to place possessory interest properties on the roll. They have also correctly and consistently applied the correct procedures and valuation methods in the valuation of possessory interest properties.

Recommendations

None

PERSONAL PROPERTY AUDIT

Las Animas County was studied for its procedural compliance with the personal property assessment outlined in the Assessor's Reference Library (ARL) Volume 5, and in the State Board of Equalization (SBOE) requirements for the assessment of personal property. The SBOE requires that counties use ARL Volume 5, including current discovery, classification, documentation procedures, current economic lives table, cost factor tables, depreciation table, and level of value adjustment factor table.

The personal property audit standards narrative must be in place and current. A listing of businesses that have been audited by the assessor within the twelve-month period reflected in the plan is given to the auditor. The audited businesses must be in conformity with those described in the plan.

Aggregate ratio will be determined solely from the personal property accounts that have been physically inspected. The minimum assessment sample is one percent or ten schedules, whichever is greater, and the maximum assessment audit sample is 100 schedules.

For the counties having over 100,000 population, WRA selected a sample of all personal property schedules to determine whether the assessor is correctly applying the provisions of law and manuals of the Property Tax Administrator in arriving at the assessment levels of such property. This sample was selected from the personal property schedules audited by the assessor. In no event was the sample selected by the contractor less than 30 schedules. The counties to be included in this study are Adams, Arapahoe, Boulder, Denver, Douglas, El Paso, Jefferson, Larimer, Mesa, Pueblo, and Weld. All other counties received a procedural study.

Las Animas County is compliant with the guidelines set forth in ARL Volume 5 regarding discovery procedures, using the following methods to discover personal property accounts in the county:

- Public Record Documents
- Chamber of Commerce/Economic Development Contacts
- Local Telephone Directories, Newspapers or Other Local Publications
- Personal Observation, Physical Canvassing or Word of Mouth

The county uses the Division of Property Taxation (DPT) recommended classification and documentation procedures. The DPT's recommended cost factor tables, depreciation tables and level of value adjustment factor tables are also used.

Las Animas County submitted their personal property written audit plan and was current for the 2014 valuation period. The number and listing of businesses audited was also submitted and was in conformance with the written audit plan. The following audit triggers were used by the county to select accounts to be audited:

- New businesses filing for the first time
- Non-filing Accounts - Best Information Available
- 5-6 year cycle of all businesses in County



Conclusions

Las Animas County has employed adequate discovery, classification, documentation, valuation, and auditing procedures for their

personal property assessment and is in statistical compliance with SBOE requirements.

Recommendations

None

WILDROSE AUDITOR STAFF

Harry J. Fuller, *Audit Project Manager*

Suzanne Howard, *Audit Administrative Manager*

Steve Kane, *Audit Statistician*

Carl W. Ross, *Agricultural / Natural Resource Analyst*

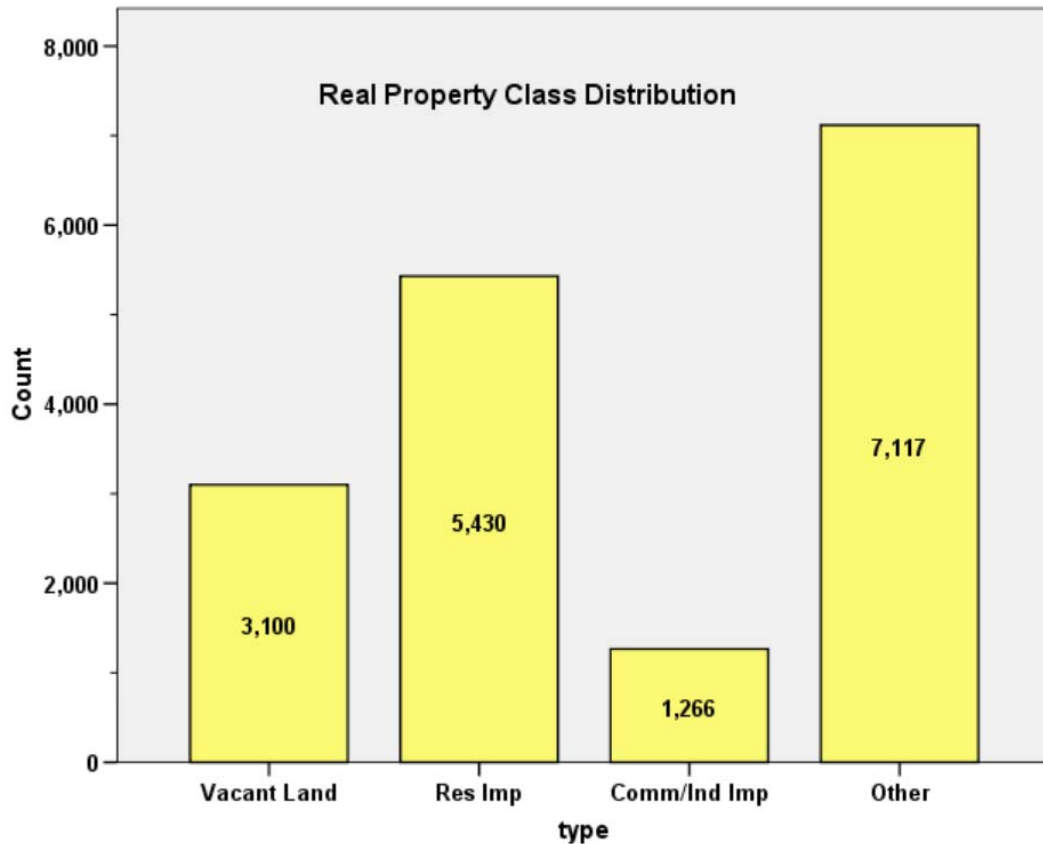
J. Andrew Rodriguez, *Field Analyst*

APPENDICES

STATISTICAL COMPLIANCE REPORT
FOR LAS ANIMAS COUNTY
 2014

I. OVERVIEW

Las Animas County is located in southern Colorado. The county has a total of 16,913 real property parcels, according to data submitted by the county assessor’s office in 2014. The following provides a breakdown of property classes for this county:



The vacant land class of properties was dominated by residential land. Residential lots (coded 100 and 1112) accounted for 76.0% of all vacant land parcels.

For residential improved properties, single family properties accounted for 80.2% of all residential properties.

Commercial and industrial properties represented a much smaller proportion of property classes in comparison. Commercial/industrial properties accounted for 7.5% of all such properties in this county.

II. DATA FILES

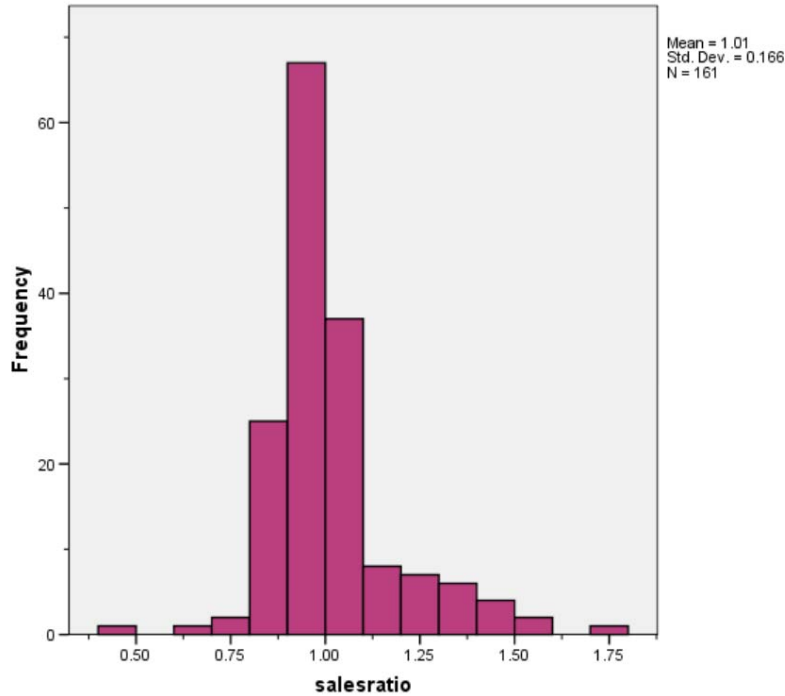
The following sales analyses were based on the requirements of the 2014 Colorado Property Assessment Study. Information was provided by the Las Animas Assessor’s Office in March 2014. The data included all 5 property record files as specified by the Auditor.

III. RESIDENTIAL SALES RESULTS

There were 161 qualified residential sales for the 18 month sale period prior to June 30, 2012. The sales ratio analysis was analyzed as follows:

Median	0.983
Price Related Differential	1.051
Coefficient of Dispersion	.107

The above ratio statistics were in compliance with the standards set forth by the Colorado State Board of Equalization (SBOE) for the overall residential sales. The following graphs describe further the sales ratio distribution for these properties:





The above graphs indicate that the distribution of the sale ratios was within state mandated limits. No sales were trimmed.

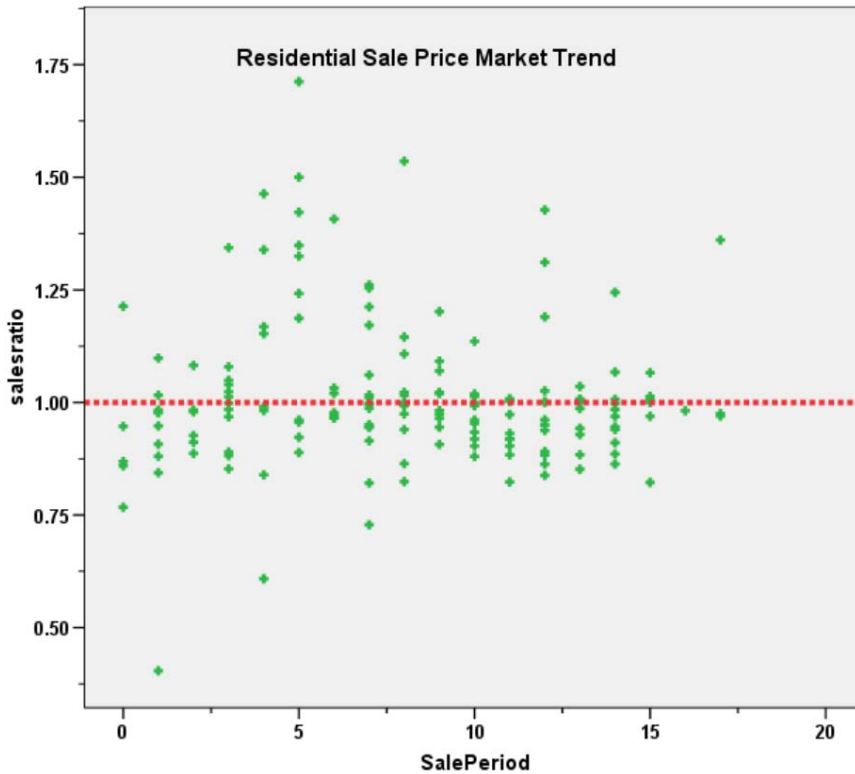
Residential Market Trend Analysis

We next analyzed the residential dataset using the 18-month sale period for any residual market trending. The following indicates that there was no statistically significant residual trend based on the sale ratios:

Coefficients^a

Model		Unstandardized Coefficients		Standardized Coefficients	t	Sig.
		B	Std. Error	Beta		
1	(Constant)	1.018	.027		37.642	.000
	SalePeriod	-.001	.003	-.023	-.287	.774

a. Dependent Variable: salesratio



The above analysis indicated that the assessor has adequately addressed market trending in the valuation of residential properties.

Sold/Unsold Analysis

In terms of the valuation consistency between sold and unsold residential properties, we compared the median actual value per square foot for 2014 between each group and stratified the results by subdivision, as follows:

Group	N	Median	Mean
Unsold	5,238	\$68	\$71
Sold	160	\$62	\$66

The above results indicate that sold and unsold residential properties were valued in a consistent manner overall.

IV. COMMERCIAL/INDUSTRIAL SALE RESULTS

There were 32 qualified commercial and industrial sales for the 60 month sale period prior to June 30, 2012. The sales ratio analysis was analyzed as follows:

Median	0.993
Price Related Differential	0.970
Coefficient of Dispersion	.111

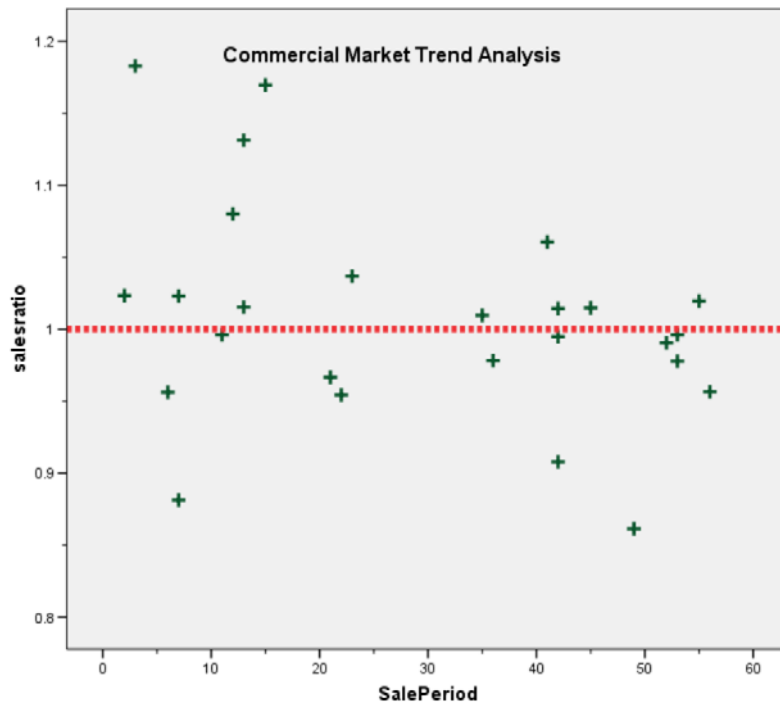
Commercial Market Trend Analysis

The assessor did not apply any market trend adjustment to the commercial dataset. The commercial sales were analyzed, examining the sale ratios across the 60-month sale period with the following results and stratifying the results by commercial subclass:

Coefficients^a

Model		Unstandardized Coefficients		Standardized Coefficients	t	Sig.
		B	Std. Error	Beta		
1	(Constant)	1.048	.026		39.851	.000
	SalePeriod	-.001	.001	-.351	-1.837	.079

a. Dependent Variable: salesratio



The market trend results indicated no statistically significant trend. We concur that no market trend adjustments were warranted for properties in this class for Las Animas County.

Sold/Unsold Analysis

We compared the median actual value per square foot between sold and unsold commercial properties to determine if the assessor was valuing each group consistently. The following results indicate that, based on the median actual value, both groups were valued overall in a consistent manner:

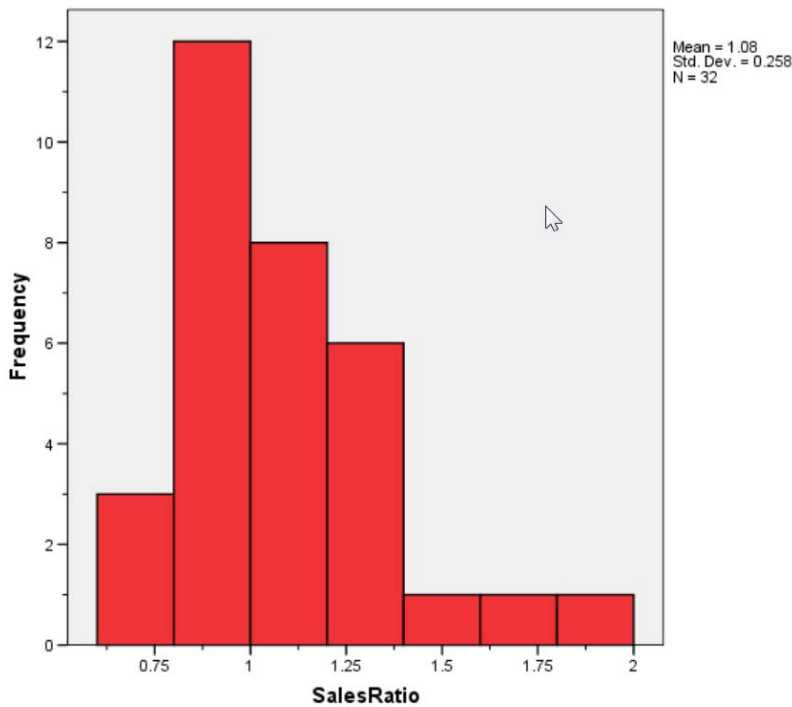
Group	No, Props	Median Val / SF	Man Val / SF
Unsold	1,158	\$55	\$58
Sold	31	\$42	\$47

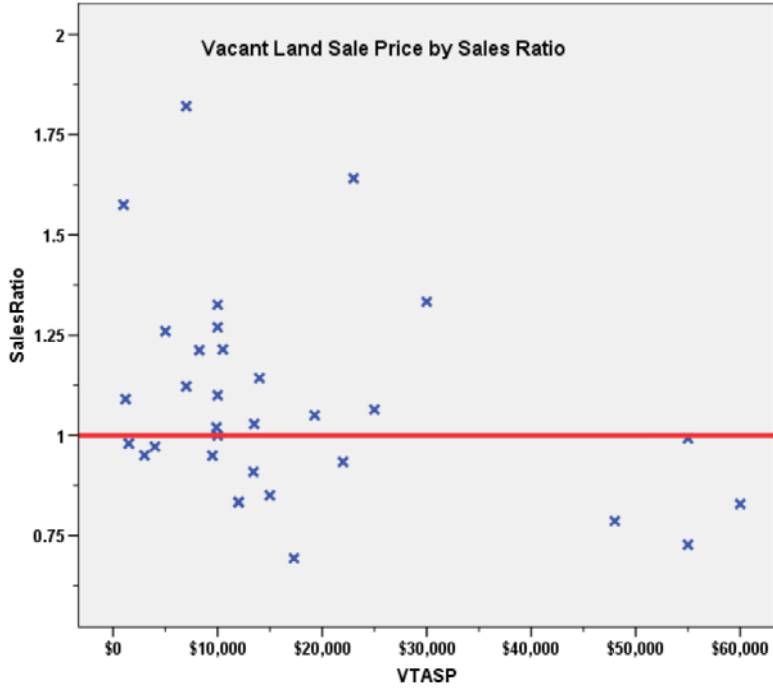
V. VACANT LAND SALE RESULTS

There were 32 qualified vacant land sales for the 24 month sale period prior to June 30, 2012. The sales ratio analysis was analyzed as follows:

Median	1.024
Price Related Differential	1.081
Coefficient of Dispersion	.183

The above tables indicate that the Las Animas County vacant land sale ratios were in compliance with the SBOE standards. The following histogram and scatter plot describe the sales ratio distribution further:





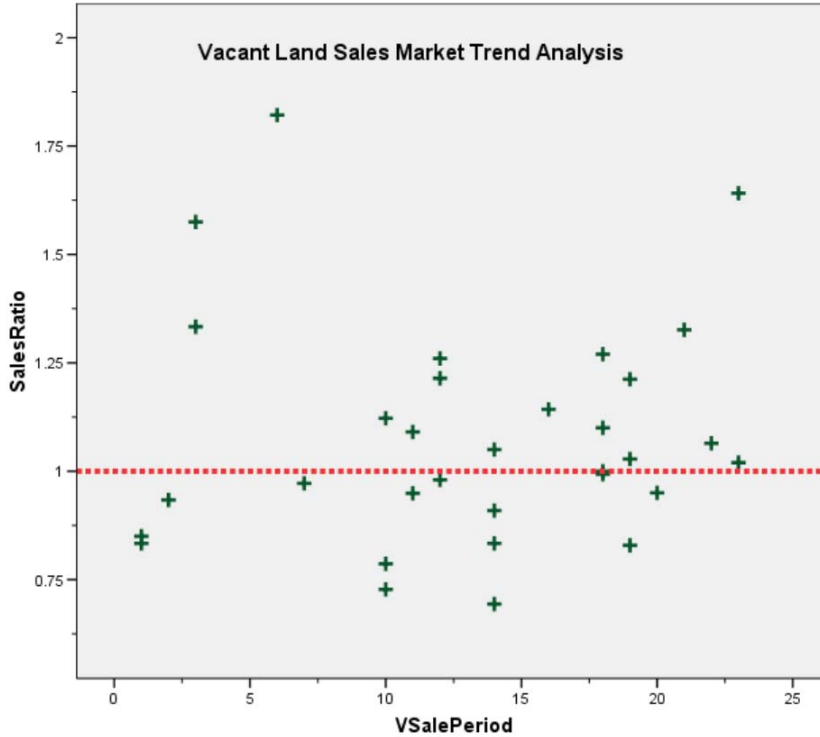
Vacant Land Market Trend Analysis

The assessor did apply market trend adjustments to the vacant land dataset. The 32 vacant land sales were analyzed, examining the sale ratios across the 24- month sale period with the following results:

Coefficients^a

Model	Unstandardized Coefficients		Standardized Coefficients	t	Sig.
	B	Std. Error	Beta		
1 (Constant)	1.063	.105		10.124	.000
VSalePeriod	.001	.007	.031	.168	.867

a. Dependent Variable: SalesRatio



The results indicated that there was no significant market trending present in the sales ratios across the sale period. We concluded that the assessor has applied market trending adjustments in an appropriate manner.

Sold/Unsold Analysis

We compared the median change in actual value between 2012 and 2014 for vacant land properties to determine if sold and unsold properties were valued consistently. We performed the analysis stratifying the properties by subdivision, as follows:

Subdiv	Group	N	Median	Mean
Total	Unsold	3,030	1.0000	0.9488
	Sold	32	0.8333	0.8417

The above results when stratified by subdivision indicated that sold and unsold vacant land properties were valued consistently.

V. AGRICULTURAL IMPROVEMENTS ANALYSIS

The final statistical verification concerned the assigned actual values for agricultural residential improvements. We compared the actual value per square foot rate for this group and compared it to rates assigned to residential single family improvements in Las Animas County.

The following indicates that agricultural residential improvements were valued in a manner similar to the single family residential improvements in this county:

<u>Descriptives</u>				Statistic	Std. Error
<u>ABSTRIMP</u>					
<u>ImpValSF</u>	1212	Mean		\$76.15	\$5.872
		95% Confidence Interval for Lower Bound		\$64.63	
		Mean Upper Bound		\$87.66	
		5% Trimmed Mean		\$56.49	
		Median		\$54.81	
		Variance		150210.512	
		Std. Deviation		\$387.570	
		Minimum		\$1	
		Maximum		\$11,904	
		Range		\$11,903	
		Interquartile Range		\$30	
		<u>Skewness</u>		24.703	.037
		Kurtosis		654.864	.074
	4277	Mean		\$129.54	\$75.392
		95% Confidence Interval for Lower Bound		\$-19.60	
		Mean Upper Bound		\$278.68	
		5% Trimmed Mean		\$53.50	
		Median		\$52.98	
		Variance		750272.870	
		Std. Deviation		\$866.183	
		Minimum		\$2	
		Maximum		\$10,000	
		Range		\$9,998	
		Interquartile Range		\$36	
		<u>Skewness</u>		11.468	.211
		Kurtosis		131.681	.419

VI. CONCLUSIONS

Based on this statistical analysis, there were no significant compliance issues concluded for Las Animas County as of the date of this report.

STATISTICAL ABSTRACT

Residential

Ratio Statistics for CURRTOT / TASP

Mean	95% Confidence Interval for Mean		Median	95% Confidence Interval for Median			Weighted Mean	95% Confidence Interval for Weighted Mean		Price Related Differential	Coefficient of Dispersion	Coefficient of Variation
	Lower Bound	Upper Bound		Lower Bound	Upper Bound	Actual Coverage		Lower Bound	Upper Bound			
1.011	.986	1.037	.983	.970	.998	96.0%	.963	.938	.987	1.051	.107	16.4%

The confidence interval for the median is constructed without any distribution assumptions. The actual coverage level may be greater than the specified level. Other confidence intervals are constructed by assuming a Normal distribution for the ratios.

Commercial/Industrial

Ratio Statistics for CURRTOT / TASP

Mean	95% Confidence Interval for Mean		Median	95% Confidence Interval for Median			Weighted Mean	95% Confidence Interval for Weighted Mean		Price Related Differential	Coefficient of Dispersion	Coefficient of Variation
	Lower Bound	Upper Bound		Lower Bound	Upper Bound	Actual Coverage		Lower Bound	Upper Bound			
.937	.876	.999	.993	.954	1.015	98.0%	.966	.908	1.025	.970	.111	18.2%

The confidence interval for the median is constructed without any distribution assumptions. The actual coverage level may be greater than the specified level. Other confidence intervals are constructed by assuming a Normal distribution for the ratios.

Vacant Land

Ratio Statistics for CURRLND / VTASP

Mean	95% Confidence Interval for Mean		Median	95% Confidence Interval for Median			Weighted Mean	95% Confidence Interval for Weighted Mean		Price Related Differential	Coefficient of Dispersion	Coefficient of Variation
	Lower Bound	Upper Bound		Lower Bound	Upper Bound	Actual Coverage		Lower Bound	Upper Bound			
1.078	.985	1.172	1.024	.949	1.143	98.0%	.997	.885	1.109	1.081	.183	24.0%

The confidence interval for the median is constructed without any distribution assumptions. The actual coverage level may be greater than the specified level. Other confidence intervals are constructed by assuming a Normal distribution for the ratios.

Residential Median Ratio Stratification

Sale Price

Case Processing Summary

		Count	Percent
SPRec	LT \$25K	13	8.1%
	\$25K to \$50K	27	16.8%
	\$50K to \$100K	53	32.9%
	\$100K to \$150K	32	19.9%
	\$150K to \$200K	16	9.9%
	\$200K to \$300K	17	10.6%
	\$300K to \$500K	3	1.9%
Overall		161	100.0%
Excluded		0	
Total		161	

Ratio Statistics for CURRTOT / TASP

Group	Median	Price Related Differential	Coefficient of Dispersion	Coefficient of Variation
				Median Centered
LT \$25K	1.153	.996	.122	15.4%
\$25K to \$50K	1.066	1.001	.159	21.3%
\$50K to \$100K	.993	1.006	.065	10.0%
\$100K to \$150K	.957	1.007	.086	15.3%
\$150K to \$200K	.938	.996	.098	17.3%
\$200K to \$300K	.947	1.002	.061	7.4%
\$300K to \$500K	.907	1.000	.061	11.1%
Overall	.983	1.051	.107	17.1%

Subclass

Case Processing Summary

	Count	Percent
ABSTRIMP 906	3	1.9%
1008	2	1.2%
1212	152	94.4%
2030	1	.6%
2234	1	.6%
2746	1	.6%
3278	1	.6%
Overall	161	100.0%
Excluded	0	
Total	161	

Ratio Statistics for CURRTOT / TASP

Group	Median	Price Related Differential	Coefficient of Dispersion	Coefficient of Variation
				Median Centered
906	.919	.993	.035	5.5%
1008	.945	.994	.027	3.8%
1212	.986	1.050	.106	16.8%
2030	.997	1.000	.000	.%
2234	.903	1.000	.000	.%
2746	.838	1.000	.000	.%
3278	1.536	1.000	.000	.%
Overall	.983	1.051	.107	17.1%

Age

Case Processing Summary

		Count	Percent
AgeRec	Over 100	45	28.0%
	75 to 100	41	25.5%
	50 to 75	24	14.9%
	25 to 50	21	13.0%
	5 to 25	20	12.4%
	5 or Newer	10	6.2%
Overall		161	100.0%
Excluded		0	
Total		161	

Ratio Statistics for CURRTOT / TASP

Group	Median	Price Related Differential	Coefficient of Dispersion	Coefficient of Variation
				Median Centered
Over 100	.998	1.066	.117	19.2%
75 to 100	.998	1.057	.114	17.3%
50 to 75	.959	1.062	.112	18.1%
25 to 50	.975	1.058	.102	15.7%
5 to 25	.979	1.017	.084	15.2%
5 or Newer	.964	1.009	.051	6.7%
Overall	.983	1.051	.107	17.1%

Improved Area

Case Processing Summary

		Count	Percent
ImpSFRec	LE 500 sf	2	1.2%
	500 to 1,000 sf	23	14.3%
	1,000 to 1,500 sf	77	47.8%
	1,500 to 2,000 sf	31	19.3%
	2,000 to 3,000 sf	25	15.5%
	3,000 sf or Higher	3	1.9%
Overall		161	100.0%
Excluded		0	
Total		161	

Ratio Statistics for CURRTOT / TASP

Group	Median	Price Related Differential	Coefficient of Dispersion	Coefficient of Variation
				Median Centered
LE 500 sf	1.122	.999	.027	3.9%
500 to 1,000 sf	1.011	1.049	.123	17.5%
1,000 to 1,500 sf	.982	1.046	.104	16.7%
1,500 to 2,000 sf	.983	1.050	.104	19.1%
2,000 to 3,000 sf	.979	1.029	.092	15.7%
3,000 sf or Higher	.863	1.002	.044	6.9%
Overall	.983	1.051	.107	17.1%

Improvement Quality

Case Processing Summary

	Count	Percent
QUALITY 1	5	3.1%
2	33	20.5%
3	99	61.5%
4	21	13.0%
5	3	1.9%
Overall	161	100.0%
Excluded	0	
Total	161	

Ratio Statistics for CURRTOT / TASP

Group	Median	Price Related Differential	Coefficient of Dispersion	Coefficient of Variation
				Median Centered
1	1.007	1.005	.071	10.6%
2	1.168	1.042	.144	17.4%
3	.979	1.021	.075	12.6%
4	.923	1.010	.068	10.0%
5	.852	1.000	.023	3.5%
Overall	.983	1.051	.107	17.1%

Improvement Condition

Case Processing Summary

	Count	Percent
CONDITION 1	1	.6%
3	158	98.1%
4	2	1.2%
Overall	161	100.0%
Excluded	0	
Total	161	

Ratio Statistics for CURRTOT / TASP

Group	Median	Price Related Differential	Coefficient of Dispersion	Coefficient of Variation
				Median Centered
1	1.712	1.000	.000	.%
3	.984	1.048	.103	16.2%
4	.915	1.003	.008	1.2%
Overall	.983	1.051	.107	17.1%

Commercial Median Ratio Stratification

Sale Price

Case Processing Summary

		Count	Percent
SPRec	LT \$25K	1	3.1%
	\$25K to \$50K	2	6.3%
	\$50K to \$100K	7	21.9%
	\$100K to \$150K	6	18.8%
	\$150K to \$200K	6	18.8%
	\$200K to \$300K	4	12.5%
	\$300K to \$500K	2	6.3%
	\$500K to \$750K	1	3.1%
	\$750K to \$1,000K	1	3.1%
	Over \$1,000K	2	6.3%
Overall		32	100.0%
Excluded		0	
Total		32	

Ratio Statistics for CURRTOT / TASP

Group	Median	Price Related Differential	Coefficient of Dispersion	Coefficient of Variation
				Median Centered
LT \$25K	1.060	1.000	.000	.%
\$25K to \$50K	.893	.988	.210	29.7%
\$50K to \$100K	.956	.999	.075	12.3%
\$100K to \$150K	.996	.995	.197	31.5%
\$150K to \$200K	1.000	1.003	.084	19.3%
\$200K to \$300K	.952	.989	.104	14.8%
\$300K to \$500K	.981	1.001	.015	2.1%
\$500K to \$750K	.764	1.000	.000	.%
\$750K to \$1,000K	1.131	1.000	.000	.%
Over \$1,000K	.996	1.002	.041	5.9%
Overall	.993	.970	.111	18.1%

Subclass

Case Processing Summary

	Count	Percent
ABSTRIMP 0	1	3.1%
1548	1	3.1%
1716	1	3.1%
1881	1	3.1%
1887	1	3.1%
1894	1	3.1%
2212	5	15.6%
2214	2	6.3%
2218	1	3.1%
2219	1	3.1%
2220	3	9.4%
2221	6	18.8%
2230	5	15.6%
2235	1	3.1%
2253	1	3.1%
3215	1	3.1%
Overall	32	100.0%
Excluded	0	
Total	32	

Ratio Statistics for CURRTOT / TASP

Group	Median	Price Related Differential	Coefficient of Dispersion	Coefficient of Variation
				Median Centered
0	1.010	1.000	.000	.%
1548	.996	1.000	.000	.%
1716	.908	1.000	.000	.%
1881	1.019	1.000	.000	.%
1887	.978	1.000	.000	.%
1894	.861	1.000	.000	.%
2212	.996	.993	.023	3.1%
2214	1.043	1.031	.085	12.0%
2218	.570	1.000	.000	.%
2219	1.037	1.000	.000	.%
2220	.995	.990	.110	21.3%
2221	.836	.915	.288	34.4%
2230	.990	1.114	.069	12.1%
2235	1.015	1.000	.000	.%
2253	.881	1.000	.000	.%
3215	1.183	1.000	.000	.%
Overall	.993	.970	.111	18.1%

Age

Case Processing Summary

	Count	Percent
AgeRec .00	1	3.1%
Over 100	9	28.1%
75 to 100	6	18.8%
50 to 75	7	21.9%
25 to 50	3	9.4%
5 to 25	6	18.8%
Overall	32	100.0%
Excluded	0	
Total	32	

Ratio Statistics for CURRTOT / TASP

Group	Median	Price Related Differential	Coefficient of Dispersion	Coefficient of Variation
				Median Centered
.00	1.010	1.000	.000	.%
Over 100	.978	.998	.055	10.8%
75 to 100	1.021	1.042	.079	16.9%
50 to 75	.956	.893	.126	20.3%
25 to 50	.861	.817	.206	36.9%
5 to 25	1.073	1.026	.110	15.0%
Overall	.993	.970	.111	18.1%

Improved Area

Case Processing Summary

	Count	Percent
ImpSFRec .00	1	3.1%
1,000 to 1,500 sf	6	18.8%
1,500 to 2,000 sf	3	9.4%
2,000 to 3,000 sf	7	21.9%
3,000 sf or Higher	15	46.9%
Overall	32	100.0%
Excluded	0	
Total	32	

Ratio Statistics for CURRTOT / TASP

Group	Median	Price Related Differential	Coefficient of Dispersion	Coefficient of Variation
				Median Centered
.00	1.010	1.000	.000	.%
1,000 to 1,500 sf	.831	1.094	.255	30.6%
1,500 to 2,000 sf	.956	1.052	.134	21.3%
2,000 to 3,000 sf	1.014	1.005	.046	8.2%
3,000 sf or Higher	.995	.991	.094	15.4%
Overall	.993	.970	.111	18.1%

Improvement Quality

Case Processing Summary

	Count	Percent
QUALITY 1	1	3.2%
2	8	25.8%
3	13	41.9%
4	6	19.4%
5	3	9.7%
Overall	31	100.0%
Excluded	1	
Total	32	

Ratio Statistics for CURRTOT / TASP

Group	Median	Price Related Differential	Coefficient of Dispersion	Coefficient of Variation
				Median Centered
1	.978	1.000	.000	.%
2	1.007	.940	.188	26.9%
3	.995	.936	.117	19.3%
4	1.015	1.017	.030	5.4%
5	.978	1.082	.077	15.5%
Overall	.990	.968	.115	18.3%

Improvement Condition

Case Processing Summary

	Count	Percent
CONDITION 0	2	6.5%
1	1	3.2%
3	27	87.1%
4	1	3.2%
Overall	31	100.0%
Excluded	1	
Total	32	

Ratio Statistics for CURRTOT / TASP

Group	Median	Price Related Differential	Coefficient of Dispersion	Coefficient of Variation
				Median Centered
0	1.019	1.034	.040	5.7%
1	.422	1.000	.000	.%
3	.995	.972	.107	16.2%
4	.990	1.000	.000	.%
Overall	.990	.968	.115	18.3%

Vacant Land Median Ratio Stratification

Sale Price

Case Processing Summary

	Count	Percent
SPRec LT \$25K	27	84.4%
\$25K to \$50K	2	6.3%
\$50K to \$100K	3	9.4%
Overall	32	100.0%
Excluded	0	
Total	32	

Ratio Statistics for CURRLND /VTASP

Group	Median	Price Related Differential	Coefficient of Dispersion	Coefficient of Variation
				Median Centered
LT \$25K	1.050	1.021	.172	25.0%
\$25K to \$50K	1.060	1.063	.258	36.5%
\$50K to \$100K	.829	1.001	.107	16.5%
Overall	1.024	1.081	.183	25.8%

Subclass

Case Processing Summary

	Count	Percent
ABSTR/LND 100	23	71.9%
200	1	3.1%
520	5	15.6%
530	1	3.1%
1112	1	3.1%
2112	1	3.1%
Overall	32	100.0%
Excluded	0	
Total	32	

Ratio Statistics for CURRLND / VTASP

Group	Median	Price Related Differential	Coefficient of Dispersion	Coefficient of Variation
				Median Centered
100	1.020	1.051	.209	29.4%
200	.972	1.000	.000	.%
520	1.091	1.007	.070	10.4%
530	1.064	1.000	.000	.%
1112	.727	1.000	.000	.%
2112	.829	1.000	.000	.%
Overall	1.024	1.081	.183	25.8%