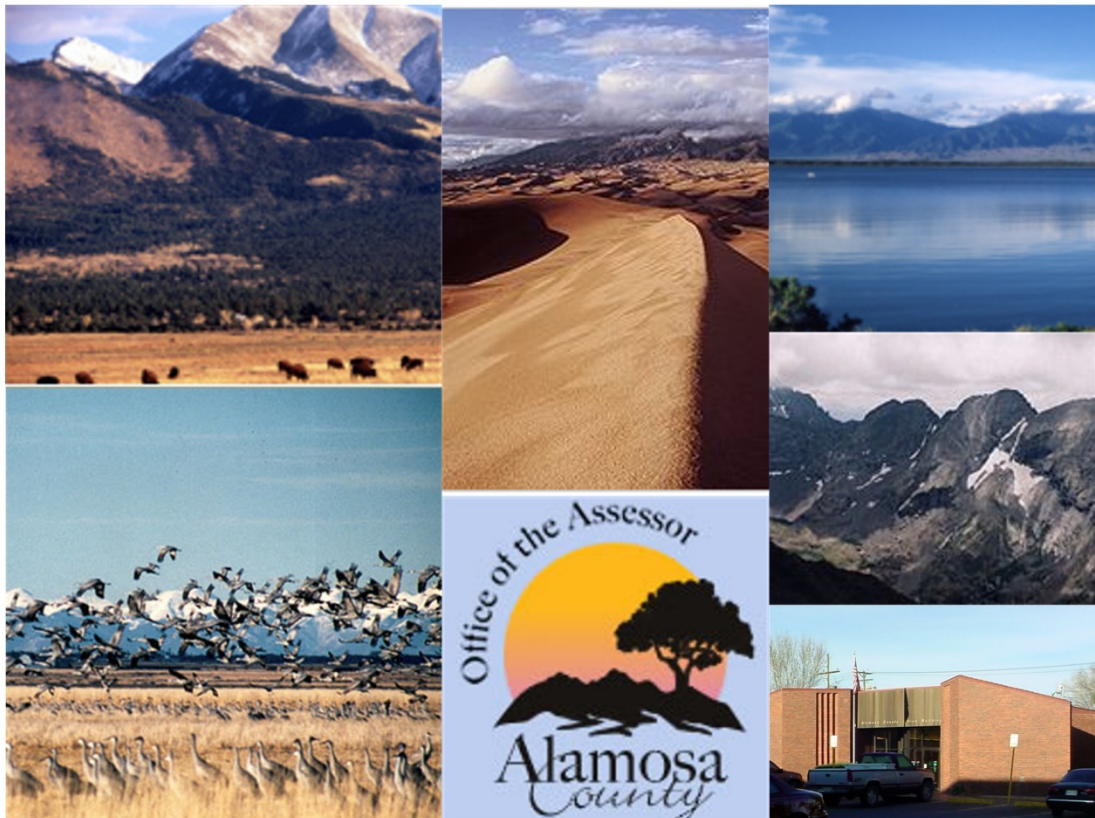




2017

ALAMOSA COUNTY PROPERTY ASSESSMENT STUDY



WILDROSE
APPRAISAL, INCORPORATED
Audit Division



September 15, 2017

Mr. Mike Mauer
Director of Research
Colorado Legislative Council
Room 029, State Capitol Building
Denver, Colorado 80203

RE: Final Report for the 2017 Colorado Property Assessment Study

Dear Mr. Mauer:

Wildrose Appraisal Inc.-Audit Division is pleased to submit the Final Reports for the 2017 Colorado Property Assessment Study.

These reports are the result of two analyses: A procedural audit and a statistical audit.

The procedural audit examines all classes of property. It specifically looks at how the assessor develops economic areas, confirms and qualifies sales, develops time adjustments and performs periodic physical property inspections. The audit reviews the procedures for determining subdivision absorption and subdivision discounting. Valuation methodology is examined for residential properties and commercial properties. Procedures are reviewed for producing mines, oil and gas leaseholds and lands producing, producing coal mines, producing earth and stone products, severed mineral interests, and non-producing patented mining claims.

Statistical audits are performed on vacant land, residential properties, commercial/industrial properties and agricultural land. A statistical analysis is performed for personal property compliance on the eleven largest counties: Adams, Arapahoe, Boulder, Denver, Douglas, El Paso, Jefferson, Larimer, Mesa, Pueblo and Weld. The remaining counties receive a personal property procedural study.

Wildrose Appraisal Inc. – Audit Division appreciates the opportunity to be of service to the State of Colorado. Please contact us with any questions or concerns.

A handwritten signature in black ink that reads "Harry J. Fuller". The signature is written in a cursive style.

Harry J. Fuller
Project Manager
Wildrose Appraisal Inc. – Audit Division

TABLE OF CONTENTS

Introduction	3
Regional/Historical Sketch of Alamosa County	4
Ratio Analysis.....	6
Time Trending Verification	8
Sold/Unsold Analysis	9
Agricultural Land Study	11
<i>Agricultural Land</i>	11
<i>Agricultural Outbuildings</i>	12
<i>Agricultural Land Under Improvements</i>	13
Sales Verification.....	14
Economic Area Review and Evaluation	16
Natural Resources	17
<i>Earth and Stone Products</i>	17
Vacant Land.....	18
Possessory Interest Properties	19
Personal Property Audit	20
Wildrose Auditor Staff.....	21
Appendices.....	22

INTRODUCTION



Colorado

The State Board of Equalization (SBOE) reviews assessments for conformance to the Constitution. The SBOE will order revaluations for counties whose valuations do not reflect the proper valuation period level of value.

The statutory basis for the audit is found in C.R.S. 39-1-104 (16)(a)(b) and (c).

The legislative council sets forth two criteria that are the focus of the audit group:

To determine whether each county assessor is applying correctly the constitutional and statutory provisions, compliance requirements of the State Board of Equalization, and the manuals published by the State Property Tax Administrator to arrive at the actual value of each class of property.

To determine if each assessor is applying correctly the provisions of law to the actual values when arriving at valuations for assessment of all locally valued properties subject to the property tax.

The property assessment audit conducts a two-part analysis: A procedural analysis and a statistical analysis.

The procedural analysis includes all classes of property and specifically looks at how the assessor develops economic areas, confirms and qualifies sales, and develops time adjustments. The audit also examines the procedures for adequately discovering, classifying and valuing agricultural outbuildings, discovering subdivision build-out and subdivision discounting procedures. Valuation methodology for vacant land, improved residential properties and commercial properties is examined. Procedures for producing mines, oil and gas leaseholds and lands producing, producing coal mines, producing earth and stone products, severed mineral interests and non-producing patented mining claims are also reviewed.

Statistical analysis is performed on vacant land, residential properties, commercial industrial properties, agricultural land, and personal property. The statistical study results are compared with State Board of Equalization compliance requirements and the manuals published by the State Property Tax Administrator.

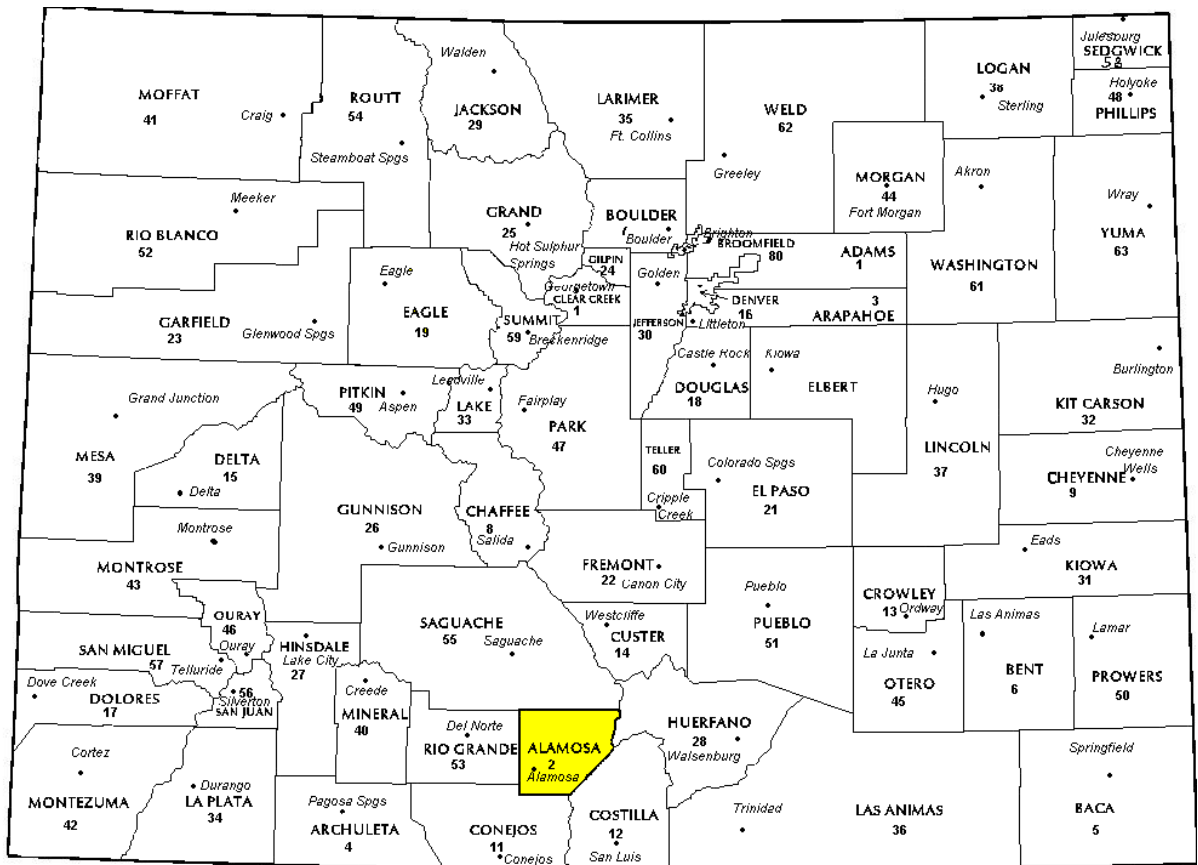
Wildrose Audit has completed the Property Assessment Study for 2017 and is pleased to report its findings for Alamosa County in the following report.

REGIONAL/HISTORICAL SKETCH OF ALAMOSA COUNTY

Regional Information

Alamosa County is located in the San Luis Valley region of Colorado. The San Luis Valley is a large, broad, alpine valley in the Rio Grande Basin of south-central Colorado. The valley is drained to the south by the Rio Grande

River which rises in the San Juan Mountains to the west of the valley. The San Luis Valley includes Alamosa, Conejos, Costilla, Mineral, Rio Grande, and Saguache counties.



Historical Information

Alamosa County had an estimated population of approximately 16,654 people with 23.0 people per square mile, according to the U.S. Census Bureau's 2016 estimated census data. This represents a 7.8 percent change from April 1, 2010 to July 1, 2016.

Alamosa offers majestic mountain views, the winding Rio Grande, clear skies, breathing room, abundant agriculture, a thriving economy, and two institutions of higher learning.

Gold and silver discoveries near Summitville in 1870 fueled the mining rush to the San Luis Valley environs. While other mining settlements quickly followed at Creede and Bonzana, the history of the Valley's settlement was greatly influenced by the railroad, farming, ranching, and timber.

Before written history, native American cultures, including Clovis and Folsom, hunted and gathered in the area 11,000 years ago. Spain claimed the area in the 1500's and established land grants to attract settlers. Clashes with Comanches, however, left the valley largely unsettled for many years. Zebulon Pike, exploring the southern part of the Louisiana Purchase and after his discovery of Pike's Peak, was awed by the view of the Sand Dunes (probably from Medano Pass) in

1807. Until Mexico's liberation from Spain in 1821, Spain claimed the San Luis Valley. The 1850's saw the first permanent settlements.

Just two years after Colorado became a state, a narrow-gauge train loaded with expectant settlers and their belongings stopped at a protected bend in the Rio Grande shaded by a grove of cottonwoods. In 1878 Alamosa, Spanish for cottonwood grove, was founded.

Trains delivered lumber and hardware and left with agricultural products. Over the next ten years rails were laid in all four directions and Alamosa became a veritable center of the San Luis Valley.

The easy access to the mountain regions surrounding the San Luis Valley are a major attraction for visitors and locals alike. Not only a provider of recreation, the forests are a key economic resource. The extensive Rio Grande National Forest first came under government control in 1891 with the authorization of the Timber Reserves Act in 1891. Established to conserve the nation's timber, range and water resources, much of this land has remained unspoiled and public. The Great Sand Dunes National Park (first created as a monument in 1932) and The San Luis Lakes State Park offer outdoor recreation on the valley floor. (*Alamosa.org*)

RATIO ANALYSIS

Methodology

All significant classes of property were analyzed. Sales were collected for each property class over the eighteen month period from January 1, 2015 through June 20, 2016. Property classes with less than thirty sales had the sales period extended in six month increments up to an additional forty-two months. If this extended sales period did not produce the minimum thirty qualified sales, the Audit performed supplemental appraisals to reach the minimum.

Although it was required that we examine the median and coefficient of dispersion for all counties, we also calculated the weighted mean and price-related differential for each class of property. Counties were not passed or failed by these latter measures, but were counseled if there were anomalies noted during our analysis. Qualified sales were based on the

qualification code used by each county, which were typically coded as either “Q” or “C.” The ratio analysis included all sales. The data was trimmed for counties with obvious outliers using IAAO standards for data analysis. In every case, we examined the loss in data from trimming to ensure that only true outliers were excluded. Any county with a significant portion of sales excluded by this trimming method was examined further. No county was allowed to pass the audit if more than 5% of the sales were “lost” because of trimming. For the largest 11 counties, the residential ratio statistics were broken down by economic area as well.

Conclusions

For this final analysis report, the minimum acceptable statistical standards allowed by the State Board of Equalization are:

ALLOWABLE STANDARDS RATIO GRID		
Property Class	Unweighted Median Ratio	Coefficient of Dispersion
Commercial/Industrial	Between .95-1.05	Less than 20.99
Condominium	Between .95-1.05	Less than 15.99
Single Family	Between .95-1.05	Less than 15.99
Vacant Land	Between .95-1.05	Less than 20.99

The results for Alamosa County are:

Alamosa County Ratio Grid					
Property Class	Number of Qualified Sales	Unweighted Median Ratio	Price Related Differential	Coefficient of Dispersion	Time Trend Analysis
Commercial/Industrial	34	0.993	0.997	5.1	Compliant
Condominium	N/A	N/A	N/A	N/A	N/A
Single Family	199	0.982	1.019	11.8	Compliant
Vacant Land	86	1.000	1.041	15.5	Compliant

After applying the above described methodologies, it is concluded from the sales ratios that Alamosa County is in compliance

with SBOE, DPT, and Colorado State Statute valuation guidelines.

Recommendations

None



TIME TRENDING VERIFICATION

Methodology

While we recommend that counties use the inverted ratio regression analysis method to account for market (time) trending, some counties have used other IAAO-approved methods, such as the weighted monthly median approach. We are not auditing the methods used, but rather the results of the methods used. Given this range of methodologies used to account for market trending, we concluded that the best validation method was to examine the sale ratios for each class across the appropriate sale period. To be specific, if a county has considered and adjusted correctly for market trending, then the sale ratios should remain stable (i.e. flat) across the sale period. If a residual market trend is detected, then the county may or may not have addressed market

trending adequately, and a further examination is warranted. This validation method also considers the number of sales and the length of the sale period. Counties with few sales across the sale period were carefully examined to determine if the statistical results were valid.

Conclusions

After verification and analysis, it has been determined that Alamosa County has complied with the statutory requirements to analyze the effects of time on value in their county. Alamosa County has also satisfactorily applied the results of their time trending analysis to arrive at the time adjusted sales price (TASP).

Recommendations

None

SOLD / UNSOLD ANALYSIS

Methodology

Alamosa County was tested for the equal treatment of sold and unsold properties to ensure that “sales chasing” has not occurred. The auditors employed a multi-step process to determine if sold and unsold properties were valued in a consistent manner.

We test the hypothesis that the assessor has valued unsold properties consistent with what is observed with the sold properties based on several units of comparison and tests. The units of comparison include the actual value per square foot and the change in value from the previous base year period to the current base year. The first test compares the actual value per square foot between sold and unsold properties by class. The median and mean value per square foot is compared and tested for any significant difference. This is tested using non-parametric methods, such as the Mann-Whitney test for differences in the distributions or medians between sold and unsold groups. It is also examined graphically and from an appraisal perspective. Data can be stratified based on location and subclass. The second test compares the difference in the median change in value from the previous base year to the current base year between sold and unsold properties by class. The same combination of non-parametric and appraisal testing is used as with the first test. A third test employing a valuation model testing a sold/unsold binary variable while controlling for property attributes such as location, size, age and other attributes. The model determines if the sold/unsold variable is statistically and empirically significant. If all three tests indicate a significant difference between sold and unsold properties for a given class, the Auditor may meet with the county to determine if sale chasing is actually occurring,

or if there are other explanations for the observed difference.

If the unsold properties have a higher median value per square foot than the sold properties, or if the median change in value is greater for the unsold properties than the sold properties, the analysis is stopped and the county is concluded to be in compliance with sold and unsold guidelines. All sold and unsold properties in a given class are first tested, although properties with extreme unit values or percent changes can be trimmed to stabilize the analysis. The median is the primary comparison metric, although the mean can also be used as a comparison metric if the distribution supports that type of measure of central tendency.

The first test (unit value method) is applied to both residential and commercial/industrial sold and unsold properties. The second test is applied to sold and unsold vacant land properties. The second test (change in value method) is also applied to residential or commercial sold and unsold properties if the first test results in a significant difference observed and/or tested between sold and unsold properties. The third test (valuation modeling) is used in instances where the results from the first two tests indicate a significant difference between sold and unsold properties. It can also be used when the number of sold and unsold properties is so large that the non-parametric testing is indicating a false rejection of the hypothesis that there is no difference between the sold and unsold property values.

These tests were supported by both tabular and graphics presentations, along with written documentation explaining the methodology used.

Sold/Unsold Results	
Property Class	Results
Commercial/Industrial	Compliant
Condominium	N/A
Single Family	Compliant
Vacant Land	Compliant

Conclusions

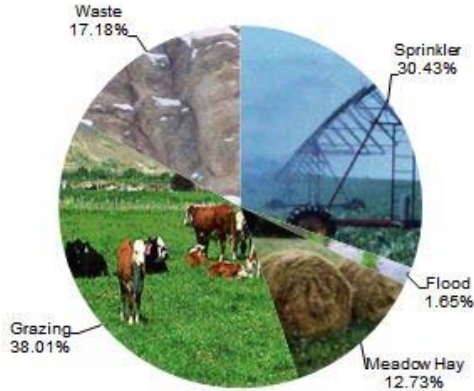
After applying the above described methodologies, it is concluded that Alamosa County is reasonably treating its sold and unsold properties in the same manner.

Recommendations

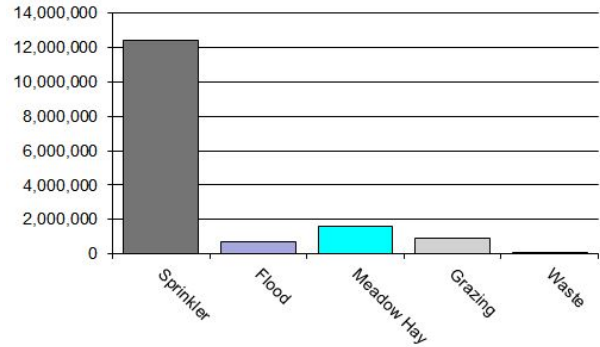
None

AGRICULTURAL LAND STUDY

Acres By Subclass



Value By Subclass



Agricultural Land

County records were reviewed to determine major land categories such as irrigated farm, dry farm, meadow hay, grazing and other lands. In addition, county records were reviewed in order to determine if: Aerial photographs are available and are being used; soil conservation guidelines have been used to classify lands based on productivity; crop rotations have been documented; typical commodities and yields have been determined; orchard lands have been properly classified and valued; expenses reflect a ten year average and are typical landlord expenses; grazing lands have been properly classified and valued; the number of acres in each class and subclass have been determined; the capitalization rate was properly applied. Also, documentation was required for the valuation methods used and any locally developed yields, carrying capacities, and expenses. Records were also checked to ensure that the commodity prices and expenses, furnished by the Property Tax Administrator (PTA), were applied properly.

(See Assessor Reference Library Volume 3 Chapter 5.)

Conclusions

An analysis of the agricultural land data indicates an acceptable appraisal of this property type. Directives, commodity prices and expenses provided by the PTA were properly applied. County yields compared favorably to those published by Colorado Agricultural Statistics. Expenses used by the county were allowable expenses and were in an acceptable range. Grazing lands carrying capacities were in an acceptable range. The data analyzed resulted in the following ratios:

Alamosa County Agricultural Land Ratio Grid						
Abstract Code	Land Class	Number Of Acres	County Value Per Acre	County Assessed Total Value	WRA Total Value	Ratio
4107	Sprinkler	71,898	172.40	12,395,297	12,977,818	0.96
4117	Flood	3,893	183.46	714,223	725,416	0.98
4137	Meadow Hay	30,081	54.42	1,636,873	1,632,366	1.00
4147	Grazing	89,826	10.23	918,791	918,791	1.00
4167	Waste	40,594	2.22	90,193	90,193	1.00
Total/Avg		236,292	66.68	15,755,376	16,344,584	0.96

Recommendations

None

Agricultural Outbuildings

Methodology

Data was collected and reviewed to determine if the guidelines found in the Assessor's Reference Library (ARL) Volume 3, pages 5.74 through 5.77 were being followed.

of Property Taxation for the valuation of agricultural outbuildings.

Recommendations

None

Conclusions

Alamosa County has substantially complied with the procedures provided by the Division

Agricultural Land Under Improvements

Methodology

Data was collected and reviewed to determine if the guidelines found in the Assessor's Reference Library (ARL) Volume 3, pages 5.19 and 5.20 were being followed.

Conclusions

Alamosa County has used the following methods to discover land under a residential improvement on a farm or ranch that is determined to be not integral under 39-1-102, C.R.S.:

- Questionnaires
- Phone Interviews
- In-Person Interviews with Owners/Tenants
- Personal Knowledge of Occupants at Assessment Date

Alamosa County has used the following methods to discover the land area under a

residential improvement that is determined to be not integral under 39-1-102, C.R.S.:

- Property Record Card Analysis
- Questionnaires
- Field Inspections
- Phone Interviews
- In-Person Interviews with Owners/Tenants
- Personal Knowledge of Occupants at Assessment Date

Alamosa County has substantially complied with the procedures provided by the Division of Property Taxation for the valuation of land under residential improvements that may or may not be integral to an agricultural operation.

Recommendations

None

SALES VERIFICATION

According to Colorado Revised Statutes:

A representative body of sales is required when considering the market approach to appraisal.

(8) In any case in which sales prices of comparable properties within any class or subclass are utilized when considering the market approach to appraisal in the determination of actual value of any taxable property, the following limitations and conditions shall apply:

(a)(I) Use of the market approach shall require a representative body of sales, including sales by a lender or government, sufficient to set a pattern, and appraisals shall reflect due consideration of the degree of comparability of sales, including the extent of similarities and dissimilarities among properties that are compared for assessment purposes. In order to obtain a reasonable sample and to reduce sudden price changes or fluctuations, all sales shall be included in the sample that reasonably reflect a true or typical sales price during the period specified in section 39-1-104 (10.2). Sales of personal property exempt pursuant to the provisions of sections 39-3-102, 39-3-103, and 39-3-119 to 39-3-122 shall not be included in any such sample.

(b) Each such sale included in the sample shall be coded to indicate a typical, negotiated sale, as screened and verified by the assessor. (39-1-103, C.R.S.)

The assessor is required to use sales of real property only in the valuation process.

(8)(f) Such true and typical sales shall include only those sales which have been determined on an individual basis to reflect the selling price of the real property only or which have been adjusted on an individual basis to reflect the selling price of the real property only. (39-1-103, C.R.S.)

Part of the Property Assessment Study is the sales verification analysis. WRA has used the above-cited statutes as a guide in our study of the county's procedures and practices for verifying sales.

WRA reviewed the sales verification procedures in 2017 for Alamosa County. This study was conducted by checking selected sales from the master sales list for the current valuation period. Specifically WRA selected 162 sales listed as unqualified.

All of the sales in the unqualified sales sample had reasons that were clear and supportable.

For residential, commercial, and vacant land sales with considerations over \$500, the contractor has examined and reported the ratio of qualified sales to total sales by class and performed the following analyses of unqualified sales:

The contractor has examined the manner in which sales have been classified as qualified or unqualified, including a listing of each step in the sales verification process, any adjustment procedures, and the county official responsible for making the final decision on qualification.

When less than 50 percent of sales are qualified in any of the three property classes (residential, commercial, and vacant land), the contractor analyzed the reasons for disqualifying sales in any subclass that constitutes at least 20 percent of the class, either by number of properties or by value, from the prior year. The contractor has

reviewed with the assessor any analysis indicating that sales data are inadequate, fail to reflect typical properties, or have been disqualified for insufficient cause. In addition, the contractor has reviewed the disqualified sales by assigned code. If there appears to be any inconsistency in the coding, the contractor has conducted further analysis to determine if the sales included in that code have been assigned appropriately.

If 50 percent or more of the sales are qualified, the contractor has reviewed a statistically significant sample of

unqualified sales, excluding sales that were disqualified for obvious reasons.

The following subclasses were analyzed for Alamosa County:

0100 Residential Lots
0550 35.0 to 99.99

Conclusions

Alamosa County appears to be doing a good job of verifying their sales. WRA agreed with the county's reason for disqualifying each of the sales selected in the sample. There are no recommendations or suggestions.

Recommendations

None

ECONOMIC AREA REVIEW AND EVALUATION

Methodology

Alamosa County has submitted a written narrative describing the economic areas that make up the county's market areas. Alamosa County has also submitted a map illustrating these areas. Each of these narratives have been read and analyzed for logic and appraisal sensibility. The maps were also compared to the narrative for consistency between the written description and the map.

Conclusions

After review and analysis, it has been determined that Alamosa County has

adequately identified homogeneous economic areas comprised of smaller neighborhoods. Each economic area defined is equally subject to a set of economic forces that impact the value of the properties within that geographic area and this has been adequately addressed. Each economic area defined adequately delineates an area that will give "similar values for similar properties in similar areas."

Recommendations

None

NATURAL RESOURCES

Earth and Stone Products

Methodology

Under the guidelines of the Assessor's Reference Library (ARL), Volume 3, Natural Resource Valuation Procedures, the income approach was applied to determine value for production of earth and stone products. The number of tons was multiplied by an economic royalty rate determined by the Division of Property Taxation to determine income. The income was multiplied by a recommended Hoskold factor to determine the actual value. The Hoskold factor is determined by the life of the reserves or the lease. Value is based on two

variables: life and tonnage. The operator determines these since there is no other means to obtain production data through any state or private agency.

Conclusions

The County has applied the correct formulas and state guidelines to earth and stone production.

Recommendations

None

VACANT LAND

Subdivision Discounting

Subdivisions were reviewed in 2017 in Alamosa County. The review showed that subdivisions were discounted pursuant to the Colorado Revised Statutes in Article 39-1-103 (14). Discounting procedures were applied to all subdivisions where less than 80 percent of all sites were sold using the present worth method. The market approach was applied where 80 percent or more of the subdivision sites were sold. An absorption period was estimated for each subdivision that was discounted. An appropriate discount rate was

developed using the summation method. Subdivision land with structures was appraised at full market value.

Conclusions

Alamosa County has implemented proper procedures to adequately estimate absorption periods, discount rates, and lot values for qualifying subdivisions.

Recommendations

None

POSSESSORY INTEREST PROPERTIES

Possessory Interest

Possessory interest property discovery and valuation is described in the Assessor's Reference Library (ARL) Volume 3 section 7 in accordance with the requirements of Chapter 39-1-103 (17)(a) (II) C.R.S. Possessory Interest is defined by the Property Tax Administrator's Publication ARL Volume 3, Chapter 7: A private property interest in government-owned property or the right to the occupancy and use of any benefit in government-owned property that has been granted under lease, permit, license, concession, contract, or other agreement.

Alamosa County has been reviewed for their procedures and adherence to guidelines when assessing and valuing agricultural and

commercial possessory interest properties. The county has also been queried as to their confidence that the possessory interest properties have been discovered and placed on the tax rolls.

Conclusions

Alamosa County has implemented a discovery process to place possessory interest properties on the roll. They have also correctly and consistently applied the correct procedures and valuation methods in the valuation of possessory interest properties.

Recommendations

None

PERSONAL PROPERTY AUDIT

Alamosa County was studied for its procedural compliance with the personal property assessment outlined in the Assessor's Reference Library (ARL) Volume 5, and in the State Board of Equalization (SBOE) requirements for the assessment of personal property. The SBOE requires that counties use ARL Volume 5, including current discovery, classification, documentation procedures, current economic lives table, cost factor tables, depreciation table, and level of value adjustment factor table.

The personal property audit standards narrative must be in place and current. A listing of businesses that have been audited by the assessor within the twelve-month period reflected in the plan is given to the auditor. The audited businesses must be in conformity with those described in the plan.

Aggregate ratio will be determined solely from the personal property accounts that have been physically inspected. The minimum assessment sample is one percent or ten schedules, whichever is greater, and the maximum assessment audit sample is 100 schedules.

For the counties having over 100,000 population, WRA selected a sample of all personal property schedules to determine whether the assessor is correctly applying the provisions of law and manuals of the Property Tax Administrator in arriving at the assessment levels of such property. This sample was selected from the personal property schedules audited by the assessor. In no event was the sample selected by the contractor less than 30 schedules. The counties to be included in this study are Adams, Arapahoe, Boulder, Denver, Douglas, El Paso, Jefferson, Larimer, Mesa, Pueblo, and Weld. All other counties received a procedural study.

Alamosa County is compliant with the guidelines set forth in ARL Volume 5 regarding discovery procedures, using the following methods to discover personal property accounts in the county:

- Public Record Documents
- Local Telephone Directories, Newspapers or Other Local Publications
- Personal Observation, Physical Canvassing or Word of Mouth
- Questionnaires, Letters and/or Phone Calls to Buyer, Seller and/or Realtor

The county uses the Division of Property Taxation (DPT) recommended classification and documentation procedures. The DPT's recommended cost factor tables, depreciation tables and level of value adjustment factor tables are also used.

Alamosa County submitted their personal property written audit plan and was current for the 2017 valuation period. The number and listing of businesses audited was also submitted and was in conformance with the written audit plan. The following audit triggers were used by the county to select accounts to be audited:

- New businesses filing for the first time
- Businesses with no deletions or additions for 2 or more years
- Businesses not audited in past 4+ years

Conclusions

Alamosa County has employed adequate discovery, classification, documentation, valuation, and auditing procedures for their personal property assessment and is in statistical compliance with SBOE requirements.

Recommendations

None

WILDROSE AUDITOR STAFF

Harry J. Fuller, *Audit Project Manager*

Suzanne Howard, *Audit Administrative Manager*

Steve Kane, *Audit Statistician*

Carl W. Ross, *Agricultural / Natural Resource Analyst*

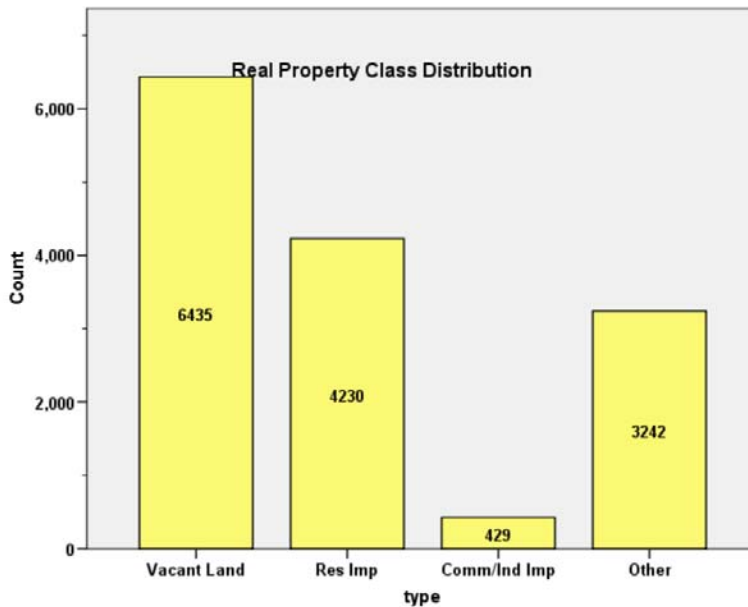
J. Andrew Rodriguez, *Field Analyst*

APPENDICES

STATISTICAL COMPLIANCE REPORT
FOR ALAMOSA COUNTY
 2017

I. OVERVIEW

Alamosa County is located in south central Colorado. The county has a total of 14,336 real property parcels, according to data submitted by the county assessor’s office in 2017. The following provides a breakdown of property classes for this county:



The vacant land class of properties was dominated by residential land. Residential lots (coded 100) accounted for 73.5% of all vacant land parcels.

For residential improved properties, single family properties accounted for 94.4% of all residential properties.

Commercial and industrial properties represented a much smaller proportion of property classes in comparison. Commercial/industrial sales accounted for 3.0% of all such properties in this county.

II. DATA FILES

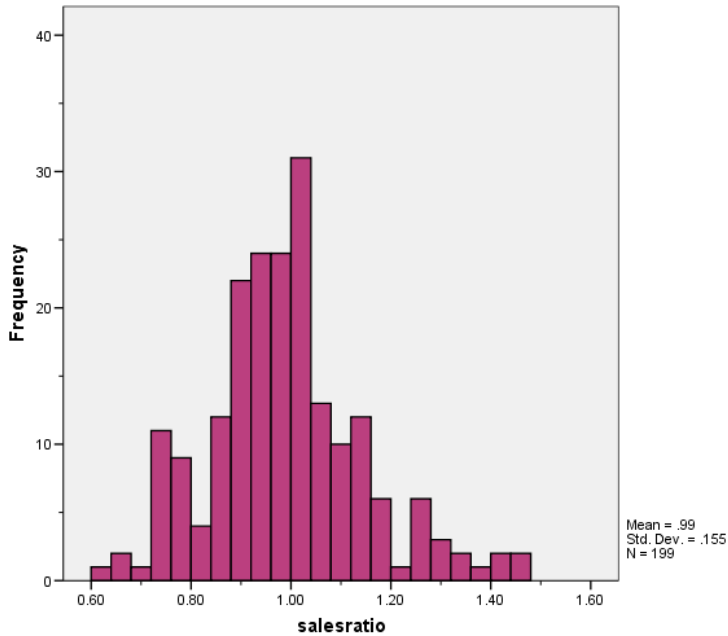
The following sales analyses were based on the requirements of the 2017 Colorado Property Assessment Study. Information was provided by the Alamosa Assessor’s Office in May 2017. The data included all 5 property record files as specified by the Auditor.

III. RESIDENTIAL SALES RESULTS

There were 199 qualified residential sales for the 18 month period ending June 30, 2016, with the following results:

Median	0.982
Price Related Differential	1.019
Coefficient of Dispersion	11.8

The above ratio statistics were in compliance with the standards set forth by the Colorado State Board of Equalization (SBOE) for the overall residential sales. The following graphs describe further the sales ratio distribution for these properties:





The above graphs indicate that the distribution of the sale ratios was within state mandated limits. No sales were trimmed.

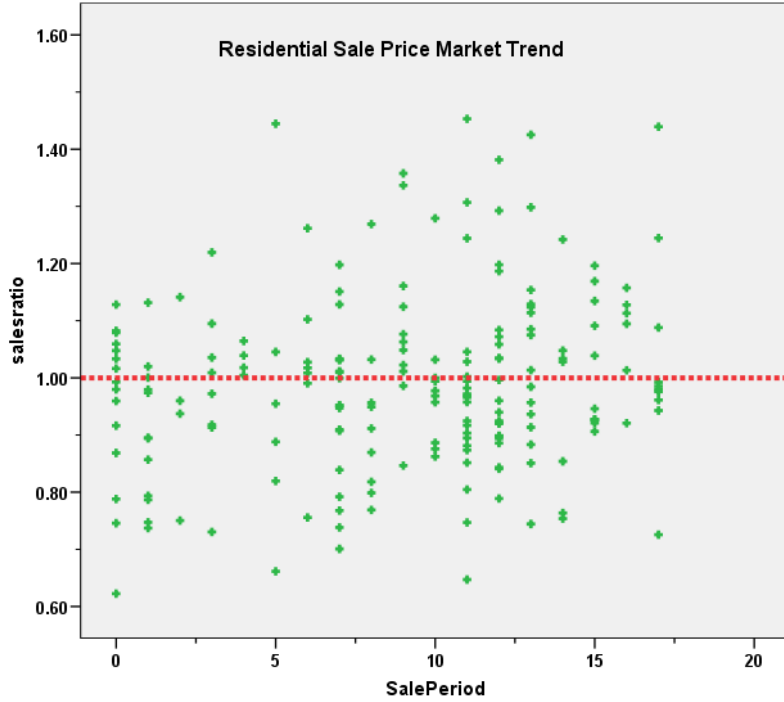
Residential Market Trend Analysis

We next analyzed the residential dataset using the 18-month sale period for any residual market trending, with the following results:

Coefficients^a

Model		Unstandardized Coefficients B	Std. Error	Standardized Coefficients Beta	t	Sig.
1	(Constant)	.941	.022		42.013	.000
	SalePeriod	.005	.002	.174	2.484	.014

a. Dependent Variable: salesratio



The above analysis indicated that the assessor has adequately addressed market trending in the valuation of residential properties.

Sold/Unsold Analysis

In terms of the valuation consistency between sold and unsold residential properties, we compared the median value per square foot for sold and unsold residential properties in 2017, as follows:

Report

VALSF			
Category	N	Median	Mean
UNSOLD	4,031	\$85	\$85
SOLD	199	\$97	\$94

Hypothesis Test Summary

	Null Hypothesis	Test	Sig.	Decision
1	The distribution of VALSF is the same across categories of sold.	Independent-Samples Mann-Whitney U Test	.000	Reject the null hypothesis.

Asymptotic significances are displayed. The significance level is .05.

Given the observed difference, we next compared the median change in actual value between taxable years 2016 and 2017 for sold and unsold residential properties, both overall and by major neighborhood, as follows:

Report

DIFF				
sold	N	Median	Mean	
UNSOLD	3978	1.03	1.02	
SOLD	199	1.03	1.04	

Report

DIFF					
NBHD	sold	N	Median	Mean	
NBHD 1	UNSOLD	1058	.94	.96	
	SOLD	36	1.00	.99	
NBHD 10	UNSOLD	795	1.03	1.03	
	SOLD	38	1.03	1.04	
NBHD 2	UNSOLD	1227	1.05	1.05	
	SOLD	85	1.05	1.06	
NBHD 3	UNSOLD	215	1.12	1.09	
	SOLD	12	1.12	1.10	
NBHD 5	UNSOLD	249	1.00	1.00	
	SOLD	13	1.02	1.00	
NBHD 6	UNSOLD	114	1.03	1.05	
	SOLD	4	1.03	1.03	
NBHD 7	UNSOLD	56	1.02	1.02	
	SOLD	4	1.02	1.02	
NBHD 8	UNSOLD	65	1.06	1.07	
	SOLD	4	1.07	1.11	

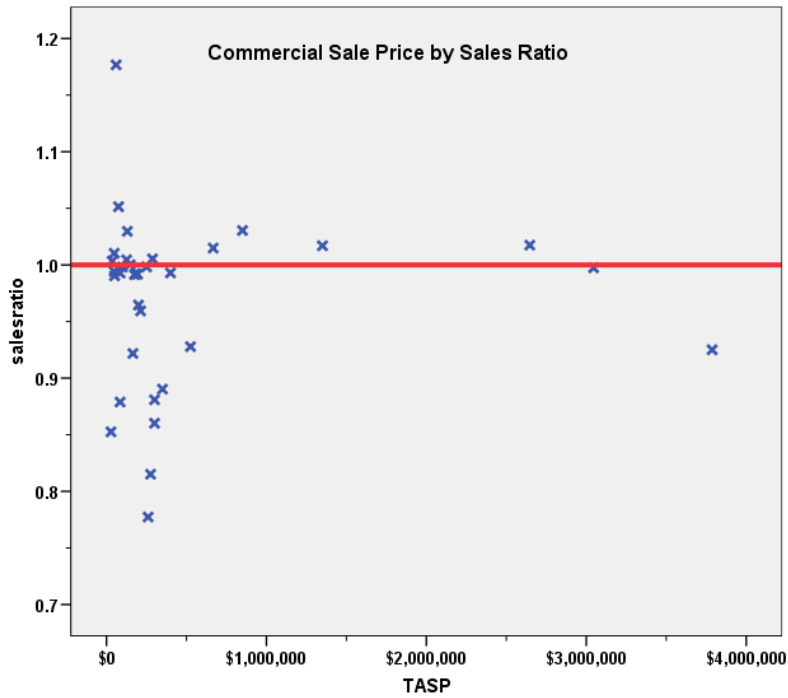
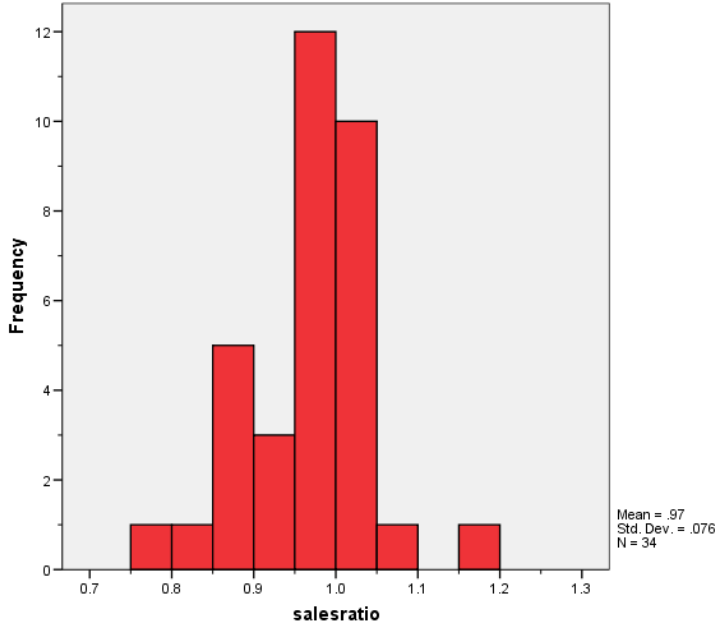
The above results indicate that sold and unsold residential properties were valued in a consistent manner.

IV. COMMERCIAL/INDUSTRIAL SALE RESULTS

There were 34 qualified commercial/industrial sales for the 60-month sale period ending June 30, 2016, with the following results:

Median	0.993
Price Related Differential	0.997
Coefficient of Dispersion	5.1

The above tables indicate that the Alamosa County commercial/industrial sale ratios were in compliance with the SBOE standards. The following histogram and scatter plot describe the sales ratio distribution further:



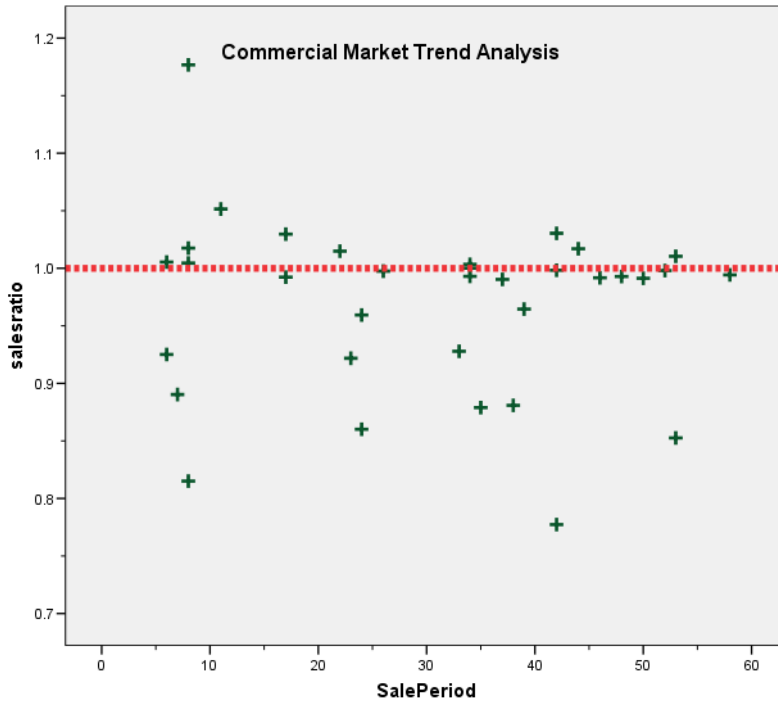
Commercial Market Trend Analysis

The 34 commercial/industrial sales were analyzed for residual market trending, examining the sale ratios across a 60-month sale period with the following results:

Coefficients^a

Model		Unstandardized Coefficients		Standardized	t	Sig.
		B	Std. Error	Coefficients Beta		
1	(Constant)	.982	.028		34.822	.000
	SalePeriod	.000	.001	-.089	-.506	.616

a. Dependent Variable: salesratio



The market trend results indicated no statistically significant trend. We concur that no market trend adjustments were warranted for properties in this class for Alamosa County.

Sold/Unsold Analysis

We compared the median and mean actual value per square foot between sold and unsold commercial properties to determine if the assessor was valuing each group consistently, as follows:

Report				
VALSF				
		N	Median	Mean
UNSOLD		395	\$41	\$69
SOLD		34	\$41	\$50

Hypothesis Test Summary

	Null Hypothesis	Test	Sig.	Decision
1	The distribution of VALSF is the same across categories of sold.	Independent-Samples Mann-Whitney U Test	.592	Retain the null hypothesis.

Asymptotic significances are displayed. The significance level is .05.

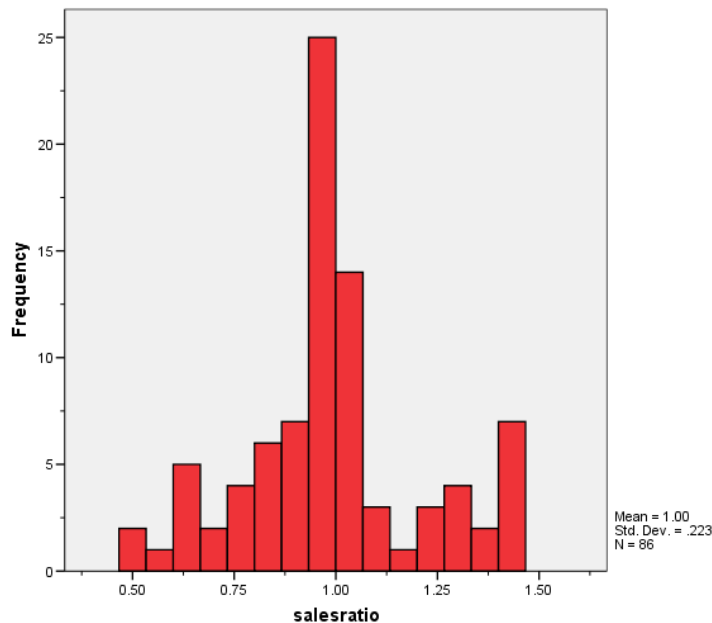
Based on the similarity between sold and unsold commercial properties, we concluded that sold and unsold commercial properties were valued consistently by the assessor.

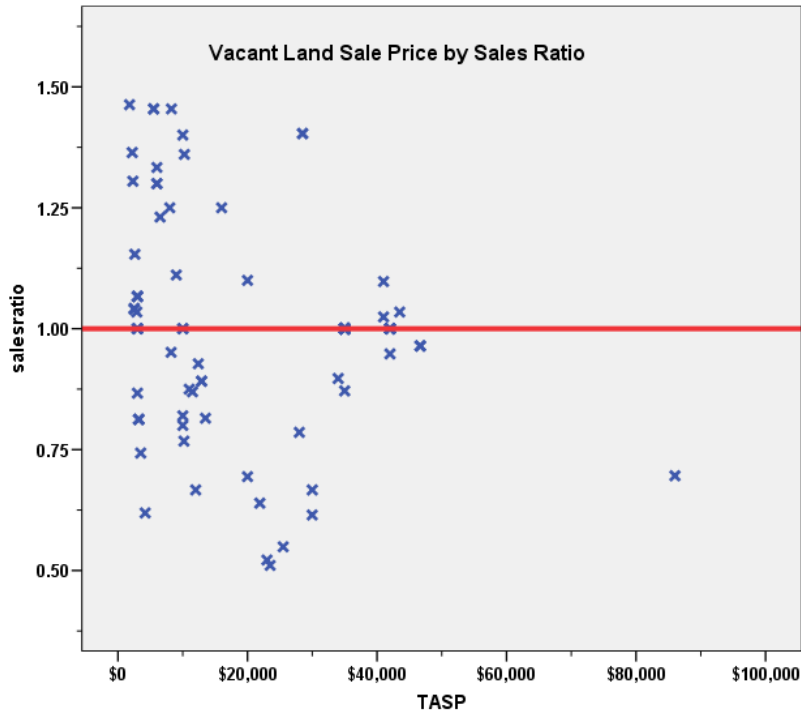
V. VACANT LAND SALE RESULTS

There were 86 qualified residential sales for the period ending June 30, 2016 used for this analysis, with the following results:

Median	1.000
Price Related Differential	1.041
Coefficient of Dispersion	15.5

The above tables indicate that the Alamosa County vacant land sale ratios were in compliance with the SBOE standards. The following histogram and scatter plot describe the sales ratio distribution further:





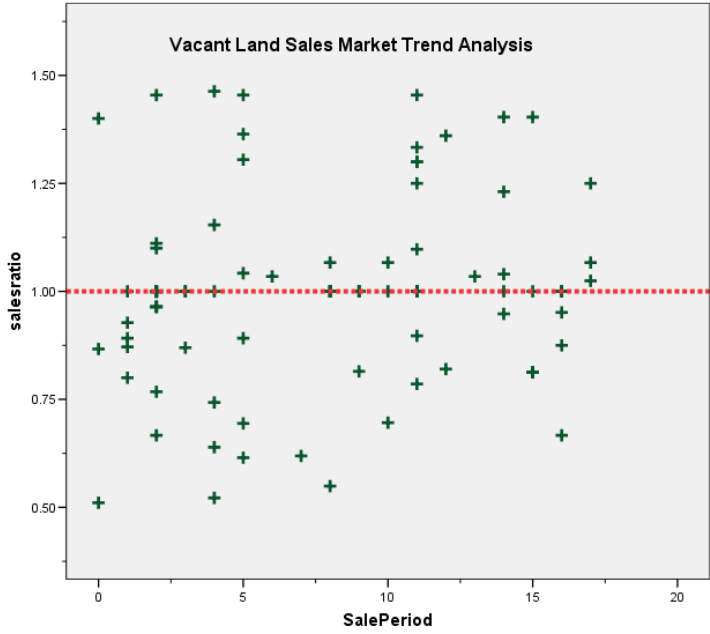
Vacant Land Market Trend Analysis

The assessor did not apply any market trend adjustment to the vacant land dataset. The 86 vacant land sales were analyzed, examining the sale ratios across the 18-month sale period with the following results:

Coefficients^a

Model		Unstandardized Coefficients B	Std. Error	Standardized Coefficients Beta	t	Sig.
1	(Constant)	.953	.044		21.876	.000
	SalePeriod	.006	.005	.133	1.230	.222

a. Dependent Variable: salesratio



The market trend results indicated no statistically significant trend. We concur that no market trend adjustments were warranted for properties in this class for Alamosa County.

Sold/Unsold Analysis

We compared the median change in actual value between taxable years 2016 and 2017 for vacant land properties to determine if sold and unsold properties were valued consistently, as follows:

Report

DIFF	N	Median	Mean
UNSOLD	6345	1.00	1.18
SOLD	72	1.00	1.16

Hypothesis Test Summary

	Null Hypothesis	Test	Sig.	Decision
1	The distribution of DIFF is the same across categories of sold.	Independent-Samples Mann-Whitney U Test	.049	Retain the null hypothesis.

Asymptotic significances are displayed. The significance level is .01.

The above results indicated that sold and unsold vacant land properties were valued consistently overall.

VI. AGRICULTURAL IMPROVEMENTS ANALYSIS

The final statistical verification concerned the assigned actual values for agricultural residential improvements. We compared the actual value per square foot rate for this group and compared it to rates assigned to residential single family improvements in Alamosa County.

The following indicates that agricultural residential improvements were valued in a manner similar to the single family residential improvements in this county:

Report

IMPVALSF	N	Median	Mean
1212.00	3994	\$78.75	\$77.51
4277.00	347	\$76.52	\$80.19

Hypothesis Test Summary

	Null Hypothesis	Test	Sig.	Decision
1	The distribution of IMPVALSF is the same across categories of ABSTRIMP.	Independent-Samples Mann-Whitney U Test	.137	Retain the null hypothesis.

Asymptotic significances are displayed. The significance level is .05.

VII. CONCLUSIONS

Based on this statistical analysis, there were no significant compliance issues concluded for Alamosa County as of the date of this report.

STATISTICAL ABSTRACT

Residential

Ratio Statistics for CURRTOT / TASP

Mean	95% Confidence Interval for Mean		Median	95% Confidence Interval for Median			Actual Coverage	Weighted Mean	95% Confidence Interval for Weighted Mean		Price Related Differential	Coefficient of Dispersion	Coefficient of Variation Mean Centered
	Lower Bound	Upper Bound		Lower Bound	Upper Bound	Lower Bound			Upper Bound				
.990	.968	1.012	.982	.960	1.004	95.3%	.971	.951	.991	1.019	.118	15.7%	

The confidence interval for the median is constructed without any distribution assumptions. The actual coverage level may be greater than the specified level. Other confidence intervals are constructed by assuming a Normal distribution for the ratios.

Commercial/Industrial

Ratio Statistics for CURRTOT / TASP

Mean	95% Confidence Interval for Mean		Median	95% Confidence Interval for Median			Actual Coverage	Weighted Mean	95% Confidence Interval for Weighted Mean		Price Related Differential	Coefficient of Dispersion	Coefficient of Variation Mean Centered
	Lower Bound	Upper Bound		Lower Bound	Upper Bound	Lower Bound			Upper Bound				
.969	.943	.996	.993	.959	1.003	97.6%	.972	.942	1.003	.997	.051	7.8%	

The confidence interval for the median is constructed without any distribution assumptions. The actual coverage level may be greater than the specified level. Other confidence intervals are constructed by assuming a Normal distribution for the ratios.

Vacant Land

Ratio Statistics for CURRLND / TASP

Mean	95% Confidence Interval for Mean		Median	95% Confidence Interval for Median			Actual Coverage	Weighted Mean	95% Confidence Interval for Weighted Mean		Price Related Differential	Coefficient of Dispersion	Coefficient of Variation Mean Centered
	Lower Bound	Upper Bound		Lower Bound	Upper Bound	Lower Bound			Upper Bound				
.998	.950	1.045	1.000	.999	1.001	96.0%	.959	.913	1.004	1.041	.155	22.3%	

The confidence interval for the median is constructed without any distribution assumptions. The actual coverage level may be greater than the specified level. Other confidence intervals are constructed by assuming a Normal distribution for the ratios.



Residential Median Ratio Stratification

Sale Price

Case Processing Summary

		Count	Percent
SPRec	\$25K to \$50K	4	2.0%
	\$50K to \$100K	34	17.1%
	\$100K to \$150K	57	28.6%
	\$150K to \$200K	51	25.6%
	\$200K to \$300K	46	23.1%
	\$300K to \$500K	7	3.5%
Overall		199	100.0%
Excluded		0	
Total		199	

Ratio Statistics for CURRTOT / TASP

Group	Median	Price Related Differential	Coefficient of Dispersion	Coefficient of Variation Median Centered
\$25K to \$50K	1.094	1.004	.139	20.0%
\$50K to \$100K	1.104	1.003	.134	16.7%
\$100K to \$150K	.977	1.003	.109	14.5%
\$150K to \$200K	.979	.999	.093	12.0%
\$200K to \$300K	.943	.998	.114	15.5%
\$300K to \$500K	.952	1.003	.046	8.1%
Overall	.982	1.019	.118	15.8%

Subclass

Case Processing Summary

		Count	Percent
ABSTRIMP	1212.00	194	97.5%
	1215.00	4	2.0%
	1220.00	1	0.5%
Overall		199	100.0%
Excluded		0	
Total		199	

Ratio Statistics for CURRTOT / TASP

Group	Median	Price Related Differential	Coefficient of Dispersion	Coefficient of Variation Median Centered
1212.00	.983	1.019	.117	15.7%
1215.00	.920	1.092	.125	15.5%
1220.00	.701	1.000	.000	.
Overall	.982	1.019	.118	15.8%

Improvement Age

Case Processing Summary

		Count	Percent
AgeRec	Over 100	22	11.1%
	75 to 100	33	16.6%
	50 to 75	20	10.1%
	25 to 50	48	24.1%
	5 to 25	69	34.7%
	5 or Newer	7	3.5%
Overall		199	100.0%
Excluded		0	
Total		199	

Ratio Statistics for CURRTOT / TASP

Group	Median	Price Related Differential	Coefficient of Dispersion	Coefficient of Variation Median Centered
Over 100	1.072	1.051	.147	18.5%
75 to 100	.968	1.011	.123	17.2%
50 to 75	.999	1.011	.095	12.4%
25 to 50	1.006	1.015	.106	14.3%
5 to 25	.955	1.015	.107	15.1%
5 or Newer	.870	1.002	.102	15.7%
Overall	.982	1.019	.118	15.8%

Improved Area

Case Processing Summary

		Count	Percent
ImpSFRec	500 to 1,000 sf	14	7.0%
	1,000 to 1,500 sf	72	36.2%
	1,500 to 2,000 sf	57	28.6%
	2,000 to 3,000 sf	47	23.6%
	3,000 sf or Higher	9	4.5%
Overall		199	100.0%
Excluded		0	
Total		199	

Ratio Statistics for CURRTOT / TASP

Group	Median	Price Related Differential	Coefficient of Dispersion	Coefficient of Variation Median Centered
500 to 1,000 sf	.941	1.029	.152	18.9%
1,000 to 1,500 sf	.988	1.031	.129	16.8%
1,500 to 2,000 sf	.955	1.026	.111	15.9%
2,000 to 3,000 sf	1.032	1.014	.086	12.2%
3,000 sf or Higher	.949	1.011	.122	18.7%
Overall	.982	1.019	.118	15.8%

Improvement Quality

Case Processing Summary

		Count	Percent
QUALITY	ABOVE AVG	32	16.1%
	AVERAGE	152	76.4%
	BELOW AVG	12	6.0%
	BELOW AVG.	1	0.5%
	FAIR	1	0.5%
	GOOD	1	0.5%
Overall		199	100.0%
Excluded		0	
Total		199	

Ratio Statistics for CURRTOT / TASP

Group	Median	Price Related Differential	Coefficient of Dispersion	Coefficient of Variation Median Centered
ABOVE AVG	.954	1.004	.123	16.5%
AVERAGE	.981	1.019	.113	15.4%
BELOW AVG	1.028	1.002	.138	19.3%
BELOW AVG.	.731	1.000	.000	.
FAIR	1.154	1.000	.000	.
GOOD	1.045	1.000	.000	.
Overall	.982	1.019	.118	15.8%

Improvement Condition

Case Processing Summary

		Count	Percent
CONDITION	AVERAGE	199	100.0%
Overall		199	100.0%
Excluded		0	
Total		199	

Ratio Statistics for CURRTOT / TASP

Group	Median	Price Related Differential	Coefficient of Dispersion	Coefficient of Variation Median Centered
AVERAGE	.982	1.019	.118	15.8%
Overall	.982	1.019	.118	15.8%

Commercial Median Ratio Stratification

Sale Price

Case Processing Summary

		Count	Percent
SPRec	\$25K to \$50K	5	14.7%
	\$50K to \$100K	5	14.7%
	\$100K to \$150K	3	8.8%
	\$150K to \$200K	5	14.7%
	\$200K to \$300K	7	20.6%
	\$300K to \$500K	2	5.9%
	\$500K to \$750K	2	5.9%
	\$750K to \$1,000K	1	2.9%
	Over \$1,000K	4	11.8%
Overall		34	100.0%
Excluded		0	
Total		34	

Ratio Statistics for CURRTOT / TASP

Group	Median	Price Related Differential	Coefficient of Dispersion	Coefficient of Variation Median Centered
\$25K to \$50K	.994	.990	.034	7.2%
\$50K to \$100K	.998	1.011	.071	11.1%
\$100K to \$150K	1.005	1.000	.010	1.8%
\$150K to \$200K	.991	.999	.020	3.8%
\$200K to \$300K	.881	1.003	.083	10.5%
\$300K to \$500K	.942	.996	.055	7.7%
\$500K to \$750K	.971	.995	.045	6.3%
\$750K to \$1,000K	1.030	1.000	.000	.
Over \$1,000K	1.007	1.010	.028	4.8%
Overall	.993	.997	.051	8.0%

Subclass

Case Processing Summary

		Count	Percent
ABSTRIMP	2212.00	10	29.4%
	2215.00	2	5.9%
	2220.00	7	20.6%
	2223.50	1	2.9%
	2225.00	1	2.9%
	2230.00	8	23.5%
	2235.00	3	8.8%
	2245.00	2	5.9%
Overall		34	100.0%
Excluded		0	
Total		34	

Ratio Statistics for CURRTOT / TASP

Group	Median	Price Related Differential	Coefficient of Dispersion	Coefficient of Variation Median Centered
2212.00	.995	1.014	.043	6.2%
2215.00	1.007	1.004	.010	1.4%
2220.00	.993	1.047	.063	10.9%
2223.50	1.030	1.000	.000	.
2225.00	1.005	1.000	.000	.
2230.00	.979	1.015	.048	8.3%
2235.00	.879	1.035	.049	9.1%
2245.00	.931	.978	.085	12.0%
Overall	.993	.997	.051	8.0%

Improvement Age

Case Processing Summary

AgeRec	Count	Percent
Over 100	2	5.9%
75 to 100	6	17.6%
50 to 75	5	14.7%
25 to 50	13	38.2%
5 to 25	6	17.6%
5 or Newer	2	5.9%
Overall	34	100.0%
Excluded	0	
Total	34	

Ratio Statistics for CURRTOT / TASP

Group	Median	Price Related Differential	Coefficient of Dispersion	Coefficient of Variation Median Centered
Over 100	1.085	.991	.084	11.9%
75 to 100	.947	1.007	.074	8.3%
50 to 75	.998	.999	.003	0.5%
25 to 50	.997	.980	.048	8.6%
5 to 25	.926	1.013	.033	5.0%
5 or Newer	.939	.937	.084	11.9%
Overall	.993	.997	.051	8.0%

Improved Area

Case Processing Summary

		Count	Percent
ImpSFRec	LE 500 sf	1	2.9%
	500 to 1,000 sf	1	2.9%
	1,000 to 1,500 sf	3	8.8%
	1,500 to 2,000 sf	1	2.9%
	2,000 to 3,000 sf	7	20.6%
	3,000 sf or Higher	21	61.8%
Overall		34	100.0%
Excluded		0	
Total		34	

Ratio Statistics for CURRTOT / TASP

Group	Median	Price Related Differential	Coefficient of Dispersion	Coefficient of Variation Median Centered
LE 500 sf	.853	1.000	.000	.
500 to 1,000 sf	1.010	1.000	.000	.
1,000 to 1,500 sf	.998	1.007	.061	12.7%
1,500 to 2,000 sf	.993	1.000	.000	.
2,000 to 3,000 sf	.990	1.014	.037	5.9%
3,000 sf or Higher	.997	.988	.053	8.4%
Overall	.993	.997	.051	8.0%

Improvement Quality

Case Processing Summary

		Count	Percent
QUALITY	AVERAGE	32	94.1%
	BELOW AVG	1	2.9%
	GOOD	1	2.9%
Overall		34	100.0%
Excluded		0	
Total		34	

Ratio Statistics for CURRTOT / TASP

Group	Median	Price Related Differential	Coefficient of Dispersion	Coefficient of Variation Median Centered
AVERAGE	.994	.996	.052	8.2%
BELOW AVG	.992	1.000	.000	.
GOOD	.928	1.000	.000	.
Overall	.993	.997	.051	8.0%

Improvement Condition

Case Processing Summary

		Count	Percent
CONDITION	AVERAGE	34	100.0%
Overall		34	100.0%
Excluded		0	
Total		34	

Ratio Statistics for CURRTOT / TASP

Group	Median	Price Related Differential	Coefficient of Dispersion	Coefficient of Variation Median Centered
AVERAGE	.993	.997	.051	8.0%
Overall	.993	.997	.051	8.0%

Vacant Land Median Ratio Stratification

Sale Price

SPRec

		Frequency	Percent	Valid Percent	Cumulative Percent
Valid	LT \$25K	49	57.0	57.0	57.0
	\$25K to \$50K	36	41.9	41.9	98.8
	\$50K to \$100K	1	1.2	1.2	100.0
	Total	86	100.0	100.0	

Ratio Statistics for CURRLND / TASP

Group	Median	Price Related Differential	Coefficient of Dispersion	Coefficient of Variation Median Centered
LT \$25K	1.000	1.085	.210	26.0%
\$25K to \$50K	1.000	.996	.076	15.9%
\$50K to \$100K	.696	1.000	.000	.
Overall	1.000	1.041	.155	22.3%

Subclass

Case Processing Summary

		Count	Percent
ABSTRLND	100.00	37	43.0%
	200.00	1	1.2%
	530.00	3	3.5%
	540.00	1	1.2%
	550.00	12	14.0%
	1112.00	31	36.0%
	3115.00	1	1.2%
Overall		86	100.0%
Excluded		0	
Total		86	

Ratio Statistics for CURRLND / TASP

Group	Median	Price Related Differential	Coefficient of Dispersion	Coefficient of Variation Median Centered
100.00	1.000	1.150	.210	26.7%
200.00	.948	1.000	.000	.
530.00	.928	1.005	.194	34.0%
540.00	.767	1.000	.000	.
550.00	1.000	1.112	.214	27.4%
1112.00	1.000	.999	.061	13.6%
3115.00	.786	1.000	.000	.
Overall	1.000	1.041	.155	22.3%