

2016-17 Annual Colorado School Library Survey Highlights

Recent statistics from Library Research Service

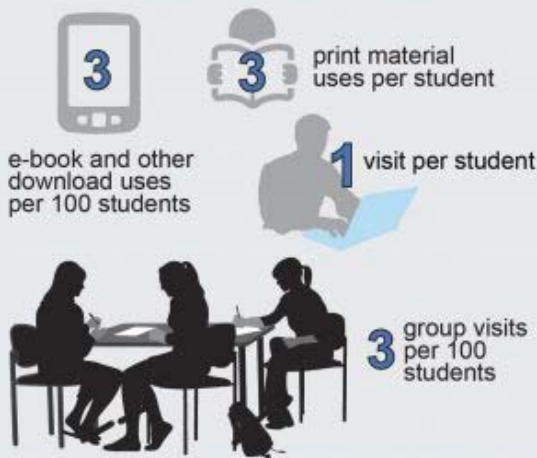
FAST FACTS

ED3/110.10/No.348

The Colorado School Library Survey is administered each year by the Library Research Service, an office of the Colorado State Library. All traditional K-12 public educational institutions in Colorado are invited to participate. This report highlights results from the 2016-17 Colorado School Library Survey, which had a 29% response rate.

LIBRARY USE & RESOURCES

LIBRARY USE DURING A TYPICAL SCHOOL WEEK



MEDIAN NUMBER OF ITEMS

Level	Books	E-Books	Computers with access to library resources
Elementary	9,000	96	202
Middle	9,705	50	316
High	9,565	169	502
Combined	9,447	17	123



INSTRUCTIONAL ENVIRONMENT & VIRTUAL PRESENCE

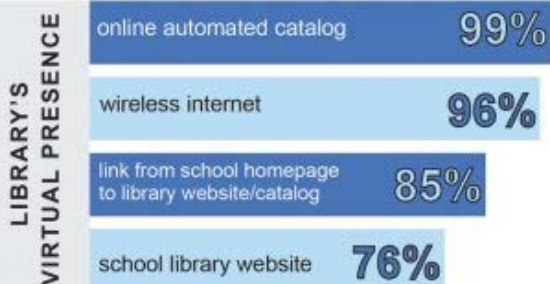
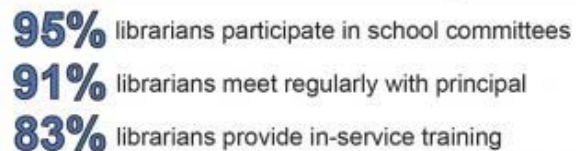
TOP 5 TEACHING APPROACHES

used by endorsed librarians at least weekly



PROFESSIONAL ENVIRONMENT

of school libraries staffed by an endorsed librarian



Author: Katie Fox, Research Analyst
 Fast Facts ED3/110.10/No. 348
 www.LRS.org | © 2018 Library Research Service

This project is made possible by a grant from the U.S. Institute of Museum and Library Services (IMLS).



COLORADO
 Department of Education
 Colorado State Library