

2013-14 Annual Colorado School Library Survey Highlights

The Colorado School Library Survey is administered each year by the Library Research Service, an office of the Colorado State Library. Surveys are sent to traditional K-12 public educational institutions. Statewide estimates are produced by weighting survey data to reflect the universe of school libraries in Colorado. Survey responses are totals based on results from the school library staff who participated in the survey. This report highlights results from the 2013-14 Colorado School Library Survey.

STATEWIDE ESTIMATES

DURING A TYPICAL SCHOOL WEEK

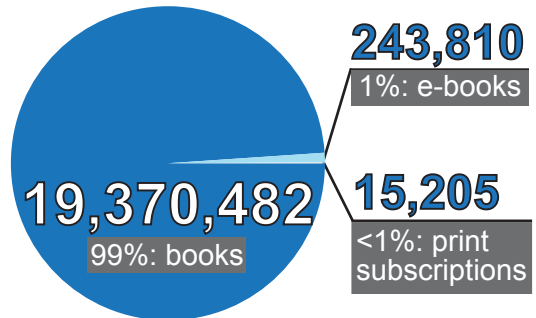
85K e-book and other download uses
2.2M print material uses

41K group visits
791K individual visits

322K computers elsewhere in the school
90K computers in the library

LIBRARY RESOURCE ACCESS

LIBRARY COLLECTION



SURVEY RESPONSES

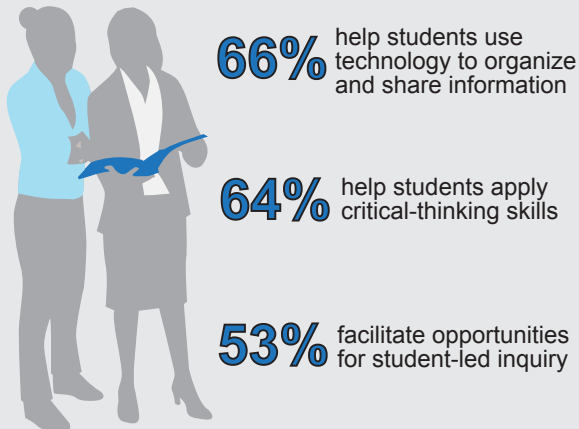
37% response rate

TOP 5 TEACHING APPROACHES

used by endorsed librarians at least weekly

72% help students use a variety of sources when information-gathering

69% teach students how to use digital resources



PROFESSIONAL ENVIRONMENT

of school libraries staffed by an endorsed librarian

96% librarians participate in school committees

90% librarians meet regularly with principal

87% librarians provide in-service training

LIBRARY'S VIRTUAL PRESENCE

online automated catalog **95%**

wireless internet **88%**

link from school homepage to library website/catalog **80%**

school library website **74%**