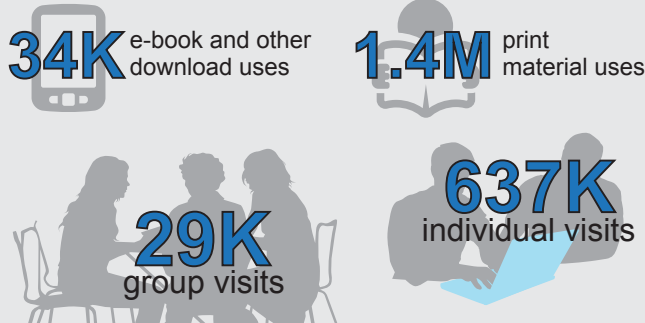


# 2012-13 Annual Colorado School Library Survey Highlights

The Colorado School Library Survey is administered each year by the Library Research Service, an office of the Colorado State Library. Surveys are sent to traditional K-12 public educational institutions. Statewide estimates are produced by weighting survey data to reflect the universe of school libraries in Colorado. Survey responses are totals based on results from the school library staff who participated in the survey. This report highlights results from the 2012-13 Colorado School Library Survey.

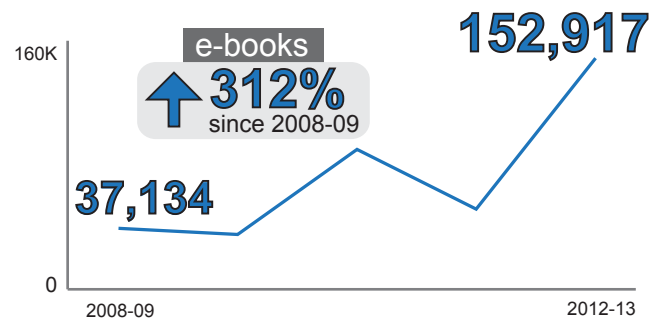
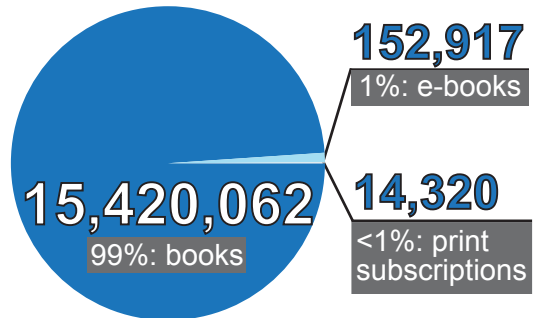
## STATEWIDE ESTIMATES

### DURING A TYPICAL SCHOOL WEEK



### LIBRARY RESOURCE ACCESS

### LIBRARY COLLECTION

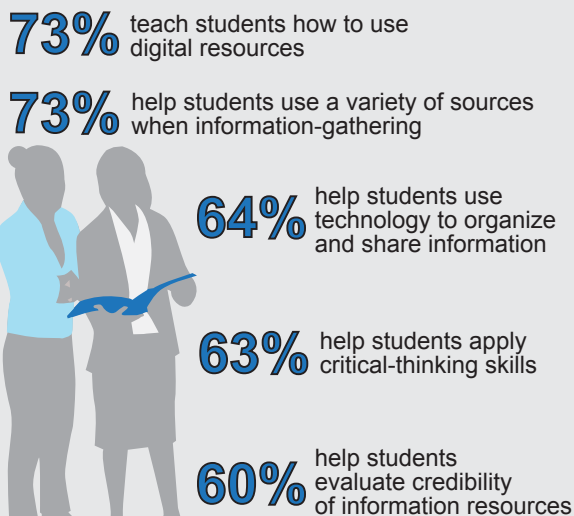


## SURVEY RESPONSES

**43%** response rate

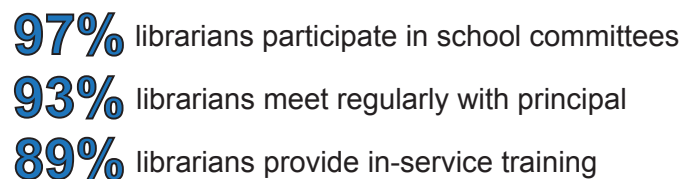
### TOP 5 TEACHING APPROACHES

used by endorsed librarians at least weekly



### PROFESSIONAL ENVIRONMENT

of school libraries staffed by an endorsed librarian



### LIBRARY'S VIRTUAL PRESENCE

