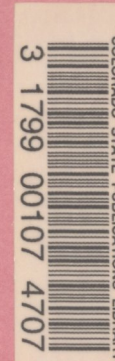


PUPIL MEMBERSHIP AND RELATED INFORMATION FALL 1999



COLORADO DEPARTMENT OF EDUCATION
STATE OFFICE BUILDING
201 EAST COLFAX
DENVER, COLORADO 80203

February 2000



ED 2/79.19/1999
C.2

COLORADO STATE BOARD OF EDUCATION

Clair Orr, Chairman Fourth Congressional District
Kersey

Patricia M. Chlouber, Vice Chairman Third Congressional District
Leadville

Ben L. Alexander Member-at-Large
Montrose

John Burnett Fifth Congressional District
Colorado Springs

Randy DeHoff Sixth Congressional District
Littleton

Patti Johnson Second Congressional District
Broomfield

Gully Stanford First Congressional District
Denver

CDE does not discriminate on the basis of disability, race, color, religion, sex, national origin or age in access to, employment in, or in provision of any of CDE's programs, benefits or activities.

PUPIL MEMBERSHIP AND RELATED INFORMATION - FALL 1999

Martina Wamboldt
Data Collection Coordinator
303-866-6821

Email: wamboldt_m@cde.state.co.us

Jan Rose Petro
Research Analyst
303-866-6838

Email: petro_j@cde.state.co.us

Judy Burnes
Executive Director
Research and Evaluation

Karen Stroup
Chief of Staff
Colorado Department of Education

William J. Moloney
Commissioner of Education
State of Colorado

February 2000

Cost \$7.50

ACKNOWLEDGEMENTS

This publication was prepared by Martina Wamboldt under the direction of Jan Rose Petro, Research Analyst, with the Research and Evaluation Unit.

Local school district personnel were essential in providing information contained in this publication. Their time and effort are appreciated.

The Information Management Services Unit was very helpful in providing data processing support.

Appreciation is extended to Angela Kelley for her assistance in data entry and editing of source documents.

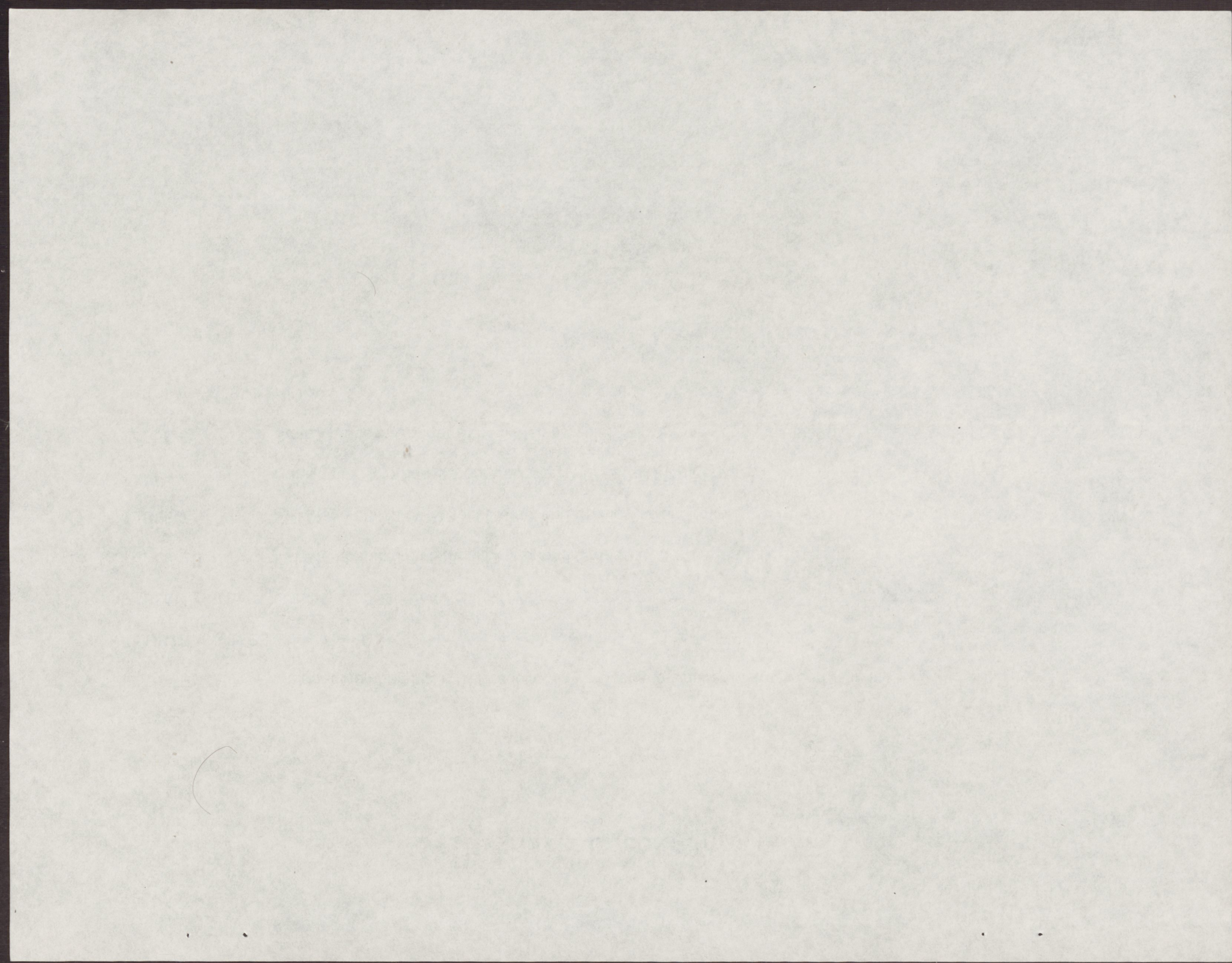
MISSION STATEMENT

The Research and Evaluation Unit of the Colorado Department of Education empowers our coworkers, the public, and the educational community to make informed decisions regarding quality education for Colorado's diverse learners by collecting and disseminating accurate, timely information, and by sharing our expertise in data collection, research and evaluation.

TABLE OF CONTENTS

PAGE

Introduction	1
Colorado Public Education Facts	2
ILLUSTRATION 1 Student Membership in Colorado's Ten Largest and Denver/Metro Area Districts	4
ILLUSTRATION 2 State Trends in Student Membership from Fall 1972 to Fall 1999	5
TABLE 1 Summary of Selected School District Data	6
TABLE 2 Fall Membership by School District and Grade	18
TABLE 3 Fall Membership by School District and Ethnic/Racial Group	30
TABLE 4 Ranking of Colorado School Districts by 1999 Fall Membership	42
TABLE 5 State Trends in Charter School Membership, Fall 1995 through Fall 1999	45
Definitions of Selected Terms	51
Data Sources	52



INTRODUCTION

Information used to prepare this publication was collected from Colorado's public school districts.

Many student membership tables contained in this publication are similar to those published in prior years. Additional information on dropout and graduation rates is available in a separate publication titled Colorado Graduation Rates for Class of 1999 and 1998-99 Annual Dropout Rates for Grades 7-12 or on the CDE website at www.cde.state.co.us.

HIGHLIGHTS:

- In fall 1999, there were 708,109 students in Colorado's public schools, an increase of 8,974 students (1.3%) over the fall 1998 membership of 699,135. Fall membership grew by 51,830 students (7.9%) from fall 1995 to fall 1999.
- Beginning with fall 1990, membership each year has surpassed the previous membership peak of 1972. Colorado's public school membership declined 5.6 percent between 1972 and 1983 before beginning an upward trend. From fall 1984 to fall 1999 student membership increased by 162,682 students (29.8%).
- Membership continues to rise in both elementary and secondary grades. Fall 1999 public school membership in elementary grades increased by 3,804 students (1.0%) over fall 1998 and by 21,755 students (5.8%) over fall 1995. In secondary grades public school membership increased by 5,170 students (1.7%) over fall 1998 and 30,075 students (10.7%) over fall 1995. For the seventh consecutive year, Colorado's student membership has shown a substantial increase from the previous year.
- Between 1995 and 1999 fall membership in public schools increased by 35,457 (19.7%) for minority students and 16,373 (3.4%) for white students. Native Americans, Asians, Blacks and Hispanics represented 30.5 percent (215,653) of the fall 1999 student membership compared to 27.5 percent (180,196) in 1995.
- The ten largest school districts in 1999 increased their membership by 5,519 students (1.4%) over fall 1998 and 33,493 students (9.4%) over fall 1995. Colorado's ten largest public school districts accounted for 391,674 (55.3%) of the total student membership in fall 1999. Of the total increase from fall 1995 to fall 1999, the ten largest school districts in 1999 accounted for 64.6 percent of that growth.
- The Denver Metropolitan Area includes 386,828 (54.6%) of the state's total student membership in public schools.
- Colorado's graduation rate for Class of 1999 was 79.9 percent. This is a decrease of 0.2 percentage points from rates reported for Class of 1998. The 1999 graduation rate is a four-year rate based on students reported by school districts beginning 9th grade in the 1995-96 school year.

For additional information regarding the data presented in this publication, please call the Research and Evaluation Unit at 303/866-6821 or 303/866-6838.

Colorado Education Facts

	<u>Fall 1995</u>	<u>Fall 1996</u>	<u>Fall 1997</u>	<u>Fall 1998</u>	<u>Fall 1999</u>	<u>Percent Change From Fall 1997</u>
Number of School Districts	176	176	176	176	176	-
Public School Student Membership	656,279	673,438	687,167	699,135	708,109	1.3
Number of Charter Schools	24	32	50	60	69	15.0
Charter School Student Membership *	4,281	11,378	11,378	14,495	17,822	23.0
Home Study Student Membership	7,581	8,503	8,587	8,827	9,719	10.1
Non-Public School Student Membership	48,804	49,078	48,768	49,335	49,622	0.6

* Charter Schools are public schools. Charter School Student Membership data is included in the Public School Student Membership counts.

Fall 1999 Pupil Membership by Type of Public School		
<u>School Type</u>	<u>Number of Schools</u>	<u>Student Membership</u>
Elementary*	*924	354,756
Middle	235	130,477
Junior High	37	15,494
Senior High	290	198,132
Alternative High	71	8,451
Other	21	799
Total	1,578	708,109

* Includes 33 PK or Kindergarten only schools

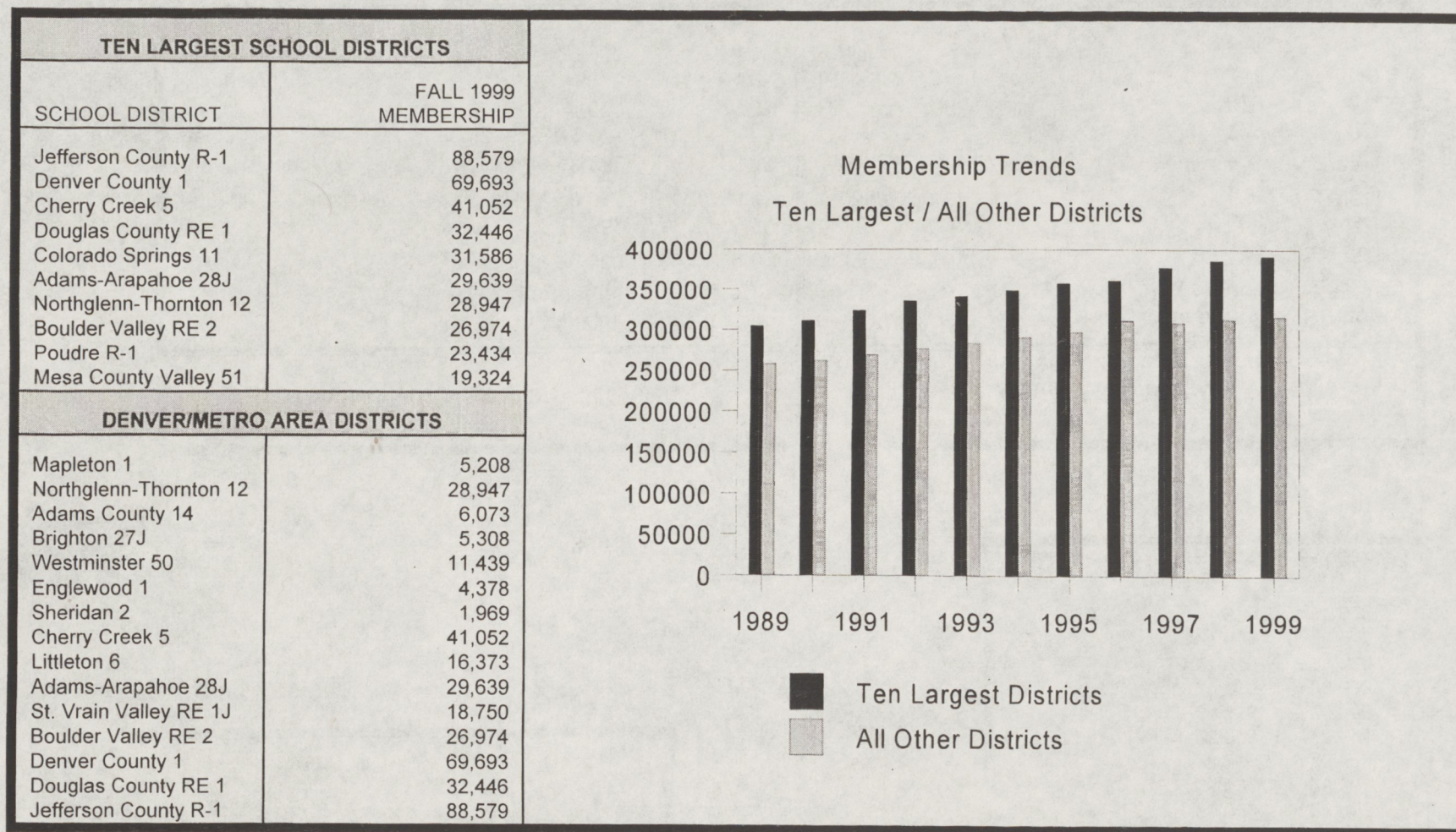
Fall 1999 Membership by Type of Non-Public School		
<u>School Type</u>	<u>Number of Schools</u>	<u>Student Membership</u>
Kindergarten	68	1,235
Elementary	177	25,956
Middle/Junior	5	443
Senior High	28	5,092
Special Ed	2	422
Alternative Education	1	58
Combined	93	16,416
Total	374	49,622

Fall 1999 Membership By Ethnic/Racial Group		
<u>Ethnic/Racial Group</u>	<u>Membership Count</u>	<u>Percent</u>
American Indian	8,258	1.2
Asian	19,792	2.8
Black	40,156	5.7
Hispanic	147,447	20.8
White	492,456	69.5
Total	708,109	100.0

October 1999 One-Day Membership Count			
<u>Grade</u>	<u>Male</u>	<u>Female</u>	<u>Total Count</u>
PK	6,951	5,906	12,857
K	26,136	24,242	50,378
1	28,386	26,785	55,171
2	28,634	27,221	55,855
3	28,675	27,208	55,883
4	28,803	27,351	56,154
5	28,090	27,066	55,156
6	28,096	26,861	54,957
7	28,279	26,577	54,856
8	28,078	26,521	54,599
9	30,410	28,300	58,710
10	26,925	25,623	52,548
11	24,390	23,335	47,725
12	21,051	20,948	41,999
Ungraded	638	623	1,261
Total	363,542	344,567	708,109

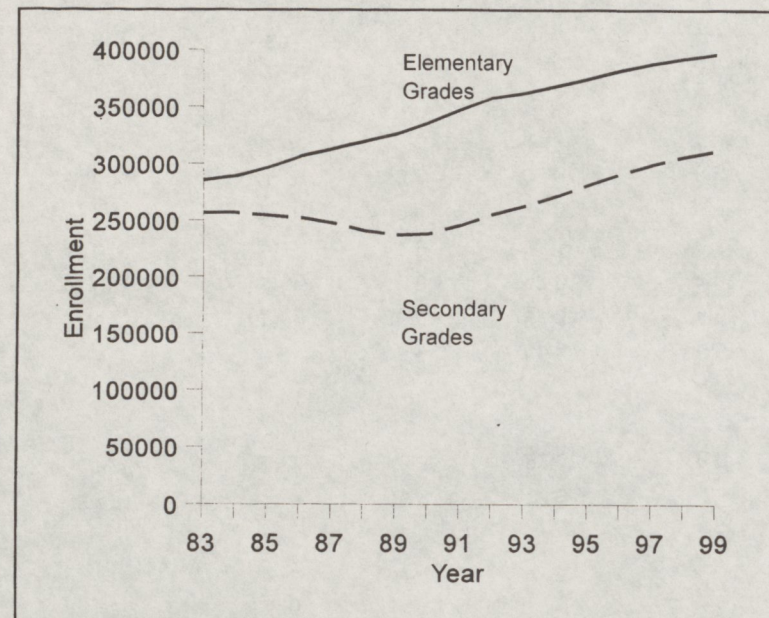
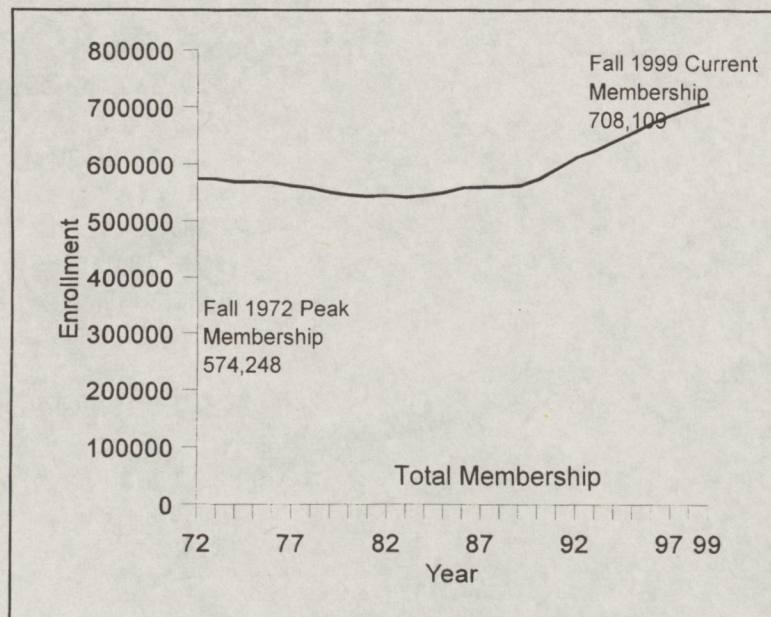
Graduation Rates for Class of 1999			Annual Dropout Rates for 1998-99 School Year		
	<u>Number of Graduates</u>	<u>Graduation Rate</u>		<u>Number of Dropouts</u>	<u>Dropout Rate</u>
Total	36,966	79.9%	Total	11,584	3.3%
Male	18,052	76.7%	Male	6,668	3.7%
Female	18,914	83.3%	Female	4,916	2.9%
American Indian	272	58.4%	American Indian	221	5.3%
Asian	1,071	83.0%	Asian	229	2.3%
Black	1,609	70.6%	Black	879	4.4%
Hispanic	4,978	64.0%	Hispanic	4,261	6.5%
White	29,036	84.3%	White	5,994	2.4%

ILLUSTRATION 1 STUDENT MEMBERSHIP IN COLORADO'S TEN LARGEST AND DENVER/METRO AREA DISTRICTS



- From fall 1989 to fall 1999 Colorado's public school membership increased by 145,354 students (25.8%). Colorado's ten largest school districts in 1999 increased their membership by 86,951 students (28.5%) during that same period. The ten largest districts account for 391,674 (55.3%) of the state's total fall 1999 public school membership.
- The Denver/Metro area includes 386,828 (54.6%) of the state's total fall 1999 student membership in public schools. From fall 1989 to fall 1999, student membership in the Denver/Metro area increased by 84,882 students (28.1%). The total increase for all other Colorado school districts during that period was 55,626 students (21.3%).

ILLUSTRATION 2 STATE TRENDS IN STUDENT MEMBERSHIP FROM FALL 1972 TO FALL 1999



- Colorado's public school membership declined 5.6 percent between 1972 and 1983 before beginning an upward trend. Student membership since 1990 has consistently surpassed the previous membership peak in fall 1972. Fall membership increased 30.6 percent overall between 1983 (542,196) and 1999 (708,109).
- Elementary grades reflected a 6.7 percent decline from fall 1972 to fall 1983. Beginning fall 1983 elementary grades experienced a large increase in membership. From fall 1983 to fall 1999 student population in elementary grades increased by 111,027 students (38.9%). The fall 1999 student membership in elementary grades increased by 3,804 students from fall 1998.
- Membership in secondary grades declined overall 11.7 percent from fall 1972 to fall 1989 with a slight rise between 1973 and 1976. From fall 1989 to fall 1999 secondary grade membership has shown a 31.5 percent increase. Student membership for secondary grades in fall 1999 increased by 5,170 students over the fall 1998 membership.

TABLE 1

SUMMARY OF SCHOOL DISTRICT DATA

SCHOOL DISTRICT	NUMBER OF SCHOOLS					FALL 1999 PUPIL MEMBERSHIP	FALL 1998 CLASSROOM TEACHER F.T.E.	FALL 1998 PUPIL/ TEACHER RATIO	1998-99 GRADUATION RATE	1998-99 GRADES 7-12 DROPOUT RATE
	ELEMEN- TARY	MIDDLE/ JUNIOR	SENIOR HIGH	OTHER	TOTAL					
ADAMS COUNTY										
MAPLETON 1	7	2	1	1	11	5,208	251.4	19.6	75.7%	1.5%
NORTHGLENN-THORNTON 12	29	8	5	3	45	28,947	1,459.8	19.1	84.9%	1.8%
ADAMS COUNTY 14	8	2	1	1	12	6,073	355.1	17.2	57.3%	6.6%
BRIGHTON 27J	5	2	2	1	10	5,308	266.7	18.7	81.9%	3.2%
BENNETT 29J	1	1	1	0	3	958	64.7	15.4	80.4%	3.9%
STRASBURG 31J	1	1	1	1	4	696	31.4	18.8	97.2%	0.6%
WESTMINSTER 50	17	4	2	2	25	11,439	688.6	16.7	77.3%	4.9%
ALAMOSA COUNTY										
ALAMOSA RE-11J	3	1	1	1	6	2,401	154.8	16.2	78.9%	4.5%
SANGRE DE CRISTO RE-22J	1	0	1	0	2	328	24.1	13.3	92.9%	0.0%
ARAPAHOE COUNTY										
ENGLEWOOD 1	6	2	1	1	10	4,378	229.6	19.9	85.5%	0.6%
SHERIDAN 2	3	1	1	0	5	1,969	131.3	16.0	97.8%	4.0%
CHERRY CREEK 5	35	8	5	1	49	41,052	2,254.3	17.8	92.2%	1.0%
LITTLETON 6	18	4	3	0	25	16,373	915.6	17.9	93.1%	0.7%
DEER TRAIL 26J	1	0	1	0	2	204	19.9	9.4	78.6%	5.7%
ADAMS-ARAPAHOE 28J	33	7	4	3	47	29,639	1,546.9	18.8	69.9%	3.6%
BYERS 32J	1	0	1	0	2	491	44.7	10.7	87.1%	2.9%
ARCHULETA COUNTY										
ARCHULETA COUNTY 50 JT	2	1	1	0	4	1,525	83.5	18.6	80.2%	1.2%

TABLE 1

SUMMARY OF SCHOOL DISTRICT DATA

SCHOOL DISTRICT	NUMBER OF SCHOOLS					FALL 1999 PUPIL MEMBERSHIP	FALL 1998 CLASSROOM TEACHER F.T.E.	FALL 1998 PUPIL/ TEACHER RATIO	1998-99 GRADUATION RATE	1998-99 GRADES 7-12 DROPOUT RATE
	ELEMEN- TARY	MIDDLE/ JUNIOR	SENIOR HIGH	OTHER	TOTAL					
<u>BACA COUNTY</u>										
WALSH RE-1	1	0	1	0	2	249	23.0	11.0	85.7%	0.8%
PRITCHETT RE-3	1	0	1	0	2	91	11.3	9.2	80.0%	0.0%
SPRINGFIELD RE-4	1	1	1	0	3	374	27.9	13.9	92.0%	0.0%
VILAS RE-5	1	0	1	0	2	93	12.9	6.1	80.0%	3.6%
CAMPO RE-6	1	0	1	0	2	91	12.2	7.1	100.0%	0.0%
<u>BENT COUNTY</u>										
LAS ANIMAS RE-1	1	1	1	0	3	716	54.9	13.6	93.3%	1.7%
MCCLAVE RE-2	1	0	1	0	2	256	26.7	10.9	91.7%	0.7%
<u>BOULDER COUNTY</u>										
ST VRAIN VALLEY RE 1J	19	5	6	3	33	18,750	917.7	20.0	88.5%	5.0%
BOULDER VALLEY RE 2	35	11	9	2	57	26,974	1,483.9	18.1	83.9%	1.8%
<u>CHAFFEE COUNTY</u>										
BUENA VISTA R-31	1	1	1	1	4	1,021	65.0	13.9	84.6%	1.6%
SALIDA R-32	1	1	1	0	3	1,261	94.4	13.7	95.8%	1.2%
<u>CHEYENNE COUNTY</u>										
KIT CARSON R-1	1	0	1	0	2	123	17.6	7.6	100.0%	0.0%
CHEYENNE COUNTY RE-3	1	1	1	0	3	312	33.2	9.9	100.0%	1.1%
<u>CLEAR CREEK COUNTY</u>										
CLEAR CREEK RE-1	3	1	1	1	6	1,390	86.4	16.6	74.0%	3.3%

TABLE 1

SUMMARY OF SCHOOL DISTRICT DATA

SCHOOL DISTRICT	NUMBER OF SCHOOLS					FALL 1999 PUPIL MEMBERSHIP	FALL 1998 CLASSROOM TEACHER F.T.E.	FALL 1998 PUPIL/ TEACHER RATIO	1998-99 GRADUATION RATE	1998-99 GRADES 7-12 DROPOUT RATE
	ELEMEN- TARY	MIDDLE/ JUNIOR	SENIOR HIGH	OTHER	TOTAL					
<u>CONEJOS COUNTY</u>										
NORTH CONEJOS RE-1J	2	1	1	1	5	1,168	73.2	16.5	79.4%	2.8%
SANFORD 6J	1	0	1	0	2	384	22.5	16.0	93.1%	0.0%
SOUTH CONEJOS' RE-10	1	1	1	0	3	425	31.6	14.1	82.4%	3.5%
<u>COSTILLA COUNTY</u>										
CENTENNIAL R4	1	1	1	0	3	328	27.0	13.1	80.0%	6.4%
SIERRA GRANDE R-30	1	0	1	0	2	309	23.9	13.3	82.4%	1.6%
<u>CROWLEY COUNTY</u>										
CROWLEY COUNTY RE-1-J	1	1	1	0	3	637	46.0	13.4	80.5%	2.6%
<u>CUSTER COUNTY</u>										
CONSOLIDATED C-1	1	0	1	0	2	433	29.7	14.2	83.3%	0.0%
<u>DELTA COUNTY</u>										
DELTA COUNTY 50(J)	6	4	4	0	14	4,595	276.3	16.9	85.8%	1.8%
<u>DENVER COUNTY</u>										
DENVER COUNTY 1	86	19	12	7	124	69,693	3,387.5	20.3	64.9%	7.4%
<u>DOLORES COUNTY</u>										
DOLORES COUNTY RE NO.2	1	1	1	0	3	339	24.3	14.2	92.6%	0.6%
<u>DOUGLAS COUNTY</u>										
DOUGLAS COUNTY RE 1	36	5	5	4	50	32,446	1,716.4	17.4	88.3%	0.7%

TABLE 1

SUMMARY OF SCHOOL DISTRICT DATA

SCHOOL DISTRICT	NUMBER OF SCHOOLS					FALL 1999	CLASSROOM	FALL 1998	1998-99	1998-99
	ELEMEN- TARY	MIDDLE/ JUNIOR	SENIOR HIGH	OTHER	TOTAL	PUPIL	TEACHER	PUPIL/ TEACHER	GRADUATION	GRADES 7-12
						MEMBERSHIP	F.T.E.	RATIO	RATE	DROPOUT RATE
<u>EAGLE COUNTY</u>										
EAGLE COUNTY RE 50	6	4	2	0	12	4,493	318.8	13.6	73.1%	4.3%
<u>ELBERT COUNTY</u>										
ELIZABETH C-1	4	1	1	0	6	2,664	147.1	17.1	73.0%	3.4%
KIOWA C-2	1	1	1	0	3	396	28.1	12.4	88.0%	0.0%
BIG SANDY 100J	1	1	1	0	3	365	26.7	13.9	75.9%	3.0%
ELBERT 200	1	0	1	0	2	284	21.4	13.0	88.9%	1.4%
AGATE 300	1	0	1	0	2	100	12.0	6.6	83.3%	3.6%
<u>EL PASO COUNTY</u>										
CALHAN RJ-1	1	1	1	0	3	593	35.3	16.4	83.8%	1.1%
HARRISON 2	13	3	3	3	22	10,449	649.3	16.1	79.3%	1.4%
WIDEFIELD 3	10	3	2	1	16	8,468	476.1	17.7	85.5%	2.2%
FOUNTAIN 8	6	2	1	1	10	4,926	282.4	16.8	91.4%	1.5%
COLORADO SPRINGS 11	40	10	8	5	63	31,586	1,781.2	18.3	73.8%	4.0%
CHEYENNE MOUNTAIN 12	7	1	1	0	9	3,952	209.6	18.3	90.3%	1.3%
MANITOU SPRINGS 14	2	1	1	0	4	1,363	81.3	17.2	88.2%	0.1%
ACADEMY 20	17	5	4	1	27	16,775	974.0	16.2	88.1%	2.0%
ELLCOTT 22	1	0	1	0	2	876	59.8	13.3	75.0%	1.5%
PEYTON 23 JT	1	1	1	0	3	665	40.0	17.2	94.4%	0.3%
HANOVER 28	1	0	1	0	2	209	18.0	10.8	88.9%	0.0%
LEWIS-PALMER 38	4	2	1	0	7	4,333	204.2	20.1	88.5%	0.9%
FALCON 49	6	2	2	0	10	5,457	286.4	17.8	78.4%	0.8%
EDISON 54 JT	1	0	1	0	2	82	7.3	8.9	100.0%	0.0%
MIAMI/YODER 60 JT	1	0	1	0	2	340	24.4	13.3	80.0%	0.6%

TABLE 1

SUMMARY OF SCHOOL DISTRICT DATA

SCHOOL DISTRICT	NUMBER OF SCHOOLS					FALL 1999 PUPIL MEMBERSHIP	FALL 1998 CLASSROOM TEACHER F.T.E.	FALL 1998 PUPIL/ TEACHER RATIO	1998-99 GRADUATION RATE	1998-99 GRADES 7-12 DROPOUT RATE
	ELEMEN- TARY	MIDDLE/ JUNIOR	SENIOR HIGH	OTHER	TOTAL					
FREMONT COUNTY										
CANON CITY RE-1	7	1	1	1	10	4,233	236.4	18.2	85.4%	2.7%
FLORENCE RE-2	2	2	1	0	5	1,903	119.0	16.5	88.7%	1.8%
COTOPAXI RE-3	1	0	1	0	2	362	25.9	12.9	100.0%	0.0%
GARFIELD COUNTY										
ROARING FORK RE-1	6	3	3	2	14	4,844	310.5	15.8	72.2%	5.1%
GARFIELD RE-2	4	2	1	0	7	3,481	N/A	N/A	90.8%	1.2%
GARFIELD 16	1	1	1	0	3	791	41.8	17.8	84.8%	3.0%
GILPIN COUNTY										
GILPIN COUNTY RE-1	2	0	1	1	4	420	31.3	12.3	84.0%	0.0%
GRAND COUNTY										
WEST GRAND 1-JT	1	1	1	1	4	518	46.5	11.3	85.4%	1.8%
EAST GRAND 2	3	1	1	0	5	1,285	89.4	14.2	94.1%	0.1%
GUNNISON COUNTY										
GUNNISON WATERSHED RE1J	3	1	2	1	7	1,725	132.9	12.6	93.4%	0.7%
HINSDALE COUNTY										
HINSDALE COUNTY RE 1	1	1	1	0	3	70	5.3	12.3	100.0%	0.0%
HUERFANO COUNTY										
HUERFANO RE-1	2	1	1	0	4	822	60.2	14.7	76.3%	2.8%
LA VETA RE-2	1	0	1	0	2	327	26.0	12.8	93.5%	1.0%

TABLE 1

SUMMARY OF SCHOOL DISTRICT DATA

SCHOOL DISTRICT	NUMBER OF SCHOOLS					FALL 1999	FALL 1998	FALL 1998	1998-99	1998-99
	ELEMEN- TARY	MIDDLE/ JUNIOR	SENIOR HIGH	OTHER	TOTAL	PUPIL MEMBERSHIP	CLASSROOM TEACHER F.T.E.	PUPIL/ TEACHER RATIO	GRADUATION RATE	GRADES 7-12 DROPOUT RATE
<u>JACKSON COUNTY</u>										
NORTH PARK R-1	1	0	1	0	2	309	25.6	11.9	100.0%	1.2%
<u>JEFFERSON COUNTY</u>										
JEFFERSON COUNTY R-1	106	20	21	11	158	88,579	4,282.4	20.7	80.4%	3.3%
<u>KIOWA COUNTY</u>										
EADS RE-1	1	1	1	0	3	277	22.5	13.6	95.7%	0.6%
PLAINVIEW RE-2	1	0	1	0	2	76	12.5	7.0	100.0%	1.7%
<u>KIT CARSON COUNTY</u>										
ARRIBA-FLAGLER C-20	1	0	1	0	2	254	22.2	11.7	100.0%	2.7%
HI-PLAINS R-23	1	0	1	0	2	125	N/A	N/A	88.9%	0.0%
STRATTON R-4	1	1	1	0	3	281	21.6	14.0	92.9%	1.3%
BETHUNE R-5	1	0	1	0	2	171	16.3	10.0	100.0%	0.0%
BURLINGTON RE-6J	1	1	1	0	3	900	58.2	15.1	86.4%	1.8%
<u>LAKE COUNTY</u>										
LAKE COUNTY R-1	2	1	1	0	4	1,321	81.2	16.4	67.6%	4.3%
<u>LA PLATA COUNTY</u>										
DURANGO 9-R	7	2	3	0	12	4,850	311.4	15.5	78.5%	2.1%
BAYFIELD 10 JT-R	1	1	1	0	3	1,047	67.8	15.5	85.7%	0.0%
IGNACIO 11 JT	3	1	1	1	6	1,028	73.5	15.0	63.4%	2.7%

TABLE 1

SUMMARY OF SCHOOL DISTRICT DATA

SCHOOL DISTRICT	NUMBER OF SCHOOLS					FALL 1999	FALL 1998	FALL 1998	1998-99	1998-99
	ELEMEN- TARY	MIDDLE/ JUNIOR	SENIOR HIGH	OTHER	TOTAL	PUPIL	CLASSROOM	PUPIL/ TEACHER	GRADUATION	GRADES 7-12
						MEMBERSHIP	TEACHER F.T.E.	TEACHER RATIO	RATE	DROPOUT RATE
LARIMER COUNTY										
POUDRE R-1	31	9	3	2	45	23,434	1,248.8	18.6	83.8%	2.1%
THOMPSON,R-2J	18	5	3	1	27	14,186	745.6	19.0	85.4%	2.5%
PARK (ESTES PARK) R-3	2	1	1	0	4	1,366	93.5	14.4	74.8%	3.8%
LAS ANIMAS COUNTY										
TRINIDAD 1	3	1	1	0	5	1,664	97.1	15.6	76.1%	6.2%
PRIMERO REORGANIZED 2	1	0	1	0	2	177	17.5	10.6	100.0%	0.0%
HOEHNE REORGANIZED 3	1	1	1	0	3	337	24.2	14.2	100.0%	0.5%
AGUILAR REORGANIZED 6	1	0	1	0	2	171	19.0	8.9	87.5%	5.8%
BRANSON REORGANIZED 82	1	0	1	0	2	48	7.3	7.2	100.0%	0.0%
KIM REORGANIED 88	1	0	1	0	2	78	11.7	7.4	100.0%	2.4%
LINCOLN COUNTY										
GENOA-HUGO C113	1	0	1	0	2	289	25.0	12.3	95.2%	3.2%
LIMON RE-4J	1	0	1	0	2	663	34.5	18.8	79.1%	1.9%
KARVAL RE-23	1	0	1	0	2	86	13.6	7.1	100.0%	1.8%
LOGAN COUNTY										
VALLEY RE-1	5	1	2	1	9	2,759	169.2	16.2	90.9%	2.5%
FRENCHMAN RE-3	1	0	1	0	2	219	N/A	N/A	88.2%	0.0%
BUFFALO RE-4	1	0	1	0	2	284	23.0	11.6	100.0%	0.0%
PLATEAU RE-5	1	0	1	0	2	167	16.2	10.0	100.0%	0.0%

TABLE 1

SUMMARY OF SCHOOL DISTRICT DATA

SCHOOL DISTRICT	NUMBER OF SCHOOLS					FALL 1999	FALL 1998	FALL 1998	1998-99	1998-99
	ELEMEN- TARY	MIDDLE/ JUNIOR	SENIOR HIGH	OTHER	TOTAL	PUPIL	CLASSROOM	PUPIL/ TEACHER	GRADUATION	GRADES 7-12
						MEMBERSHIP	TEACHER F.T.E.	TEACHER RATIO	RATE	DROPOUT RATE
<u>MESA COUNTY</u>										
DE BEQUE 49JT	1	0	1	0	2	169	N/A	N/A	91.7%	0.9%
PLATEAU VALLEY 50	1	1	1	1	4	540	40.2	13.9	21.0%	30.6%
MESA COUNTY VALLEY 51	22	8	6	3	39	19,324	1,052.0	18.2	77.4%	3.7%
<u>MINERAL COUNTY</u>										
CREEDE CONSOLIDATED 1	1	0	1	0	2	153	19.1	8.3	63.6%	2.6%
<u>MOFFAT COUNTY</u>										
MOFFAT COUNTY RE:NO 1	6	2	1	0	9	2,631	156.7	17.2	85.6%	2.9%
<u>MONTEZUMA COUNTY</u>										
MONTEZUMA-CORTEZ RE-1	10	1	1	1	13	3,474	212.8	16.5	65.2%	5.6%
DOLORES RE-4A	2	1	1	0	4	656	46.1	13.9	78.6%	1.5%
MANCOS RE-6	1	1	1	0	3	507	37.3	14.8	89.2%	2.6%
<u>MONTROSE COUNTY</u>										
MONTROSE COUNTY RE-1J	7	3	2	2	14	5,344	310.5	17.2	68.8%	4.9%
WEST END RE-2	2	1	1	0	5	498	35.5	15.3	79.6%	7.8%
<u>MORGAN COUNTY</u>										
BRUSH RE-2(J)	2	1	1	0	4	1,566	97.9	16.0	81.5%	2.7%
FORT MORGAN RE-3	5	1	1	1	8	3,222	200.5	15.8	57.4%	6.9%
WELDON VALLEY RE-20(J)	1	1	1	0	3	180	18.6	8.6	85.7%	0.0%
WIGGINS RE-50(J)	1	0	1	0	2	602	40.0	15.5	81.1%	1.4%

TABLE 1

SUMMARY OF SCHOOL DISTRICT DATA

SCHOOL DISTRICT	NUMBER OF SCHOOLS					FALL 1999	FALL 1998	FALL 1998	1998-99	1998-99
	ELEMEN- TARY	MIDDLE/ JUNIOR	SENIOR HIGH	OTHER	TOTAL	PUPIL MEMBERSHIP	CLASSROOM TEACHER F.T.E.	PUPIL/ TEACHER RATIO	GRADUATION RATE	GRADES 7-12 DROPOUT RATE
<u>OTERO COUNTY</u>										
EAST OTERO R-1	3	1	1	0	5	1,749	131.8	14.4	84.8%	1.8%
ROCKY FORD R-2	2	1	1	1	5	1,063	91.2	12.0	76.7%	4.0%
MANZANOLA 3J	1	0	1	0	2	275	22.4	12.6	81.5%	3.7%
FOWLER R-4J	2	1	1	0	4	392	31.9	12.1	93.3%	0.5%
CHERAW 31	2	1	1	0	4	229	21.5	10.8	100.0%	1.5%
SWINK 33	1	0	1	0	2	348	30.1	11.9	100.0%	1.0%
<u>OURAY COUNTY</u>										
OURAY R-1	1	1	1	0	3	256	23.0	11.4	85.7%	0.0%
RIDGWAY R-2	1	1	1	0	3	310	22.4	13.3	87.5%	0.7%
<u>PARK COUNTY</u>										
PLATTE CANYON 1	1	1	1	0	3	1,589	N/A	N/A	89.1%	1.1%
PARK COUNTY RE-2	3	1	1	0	5	633	49.3	12.7	91.3%	2.7%
<u>PHILLIPS COUNTY</u>										
HOLYOKE RE-1J	1	0	1	0	2	663	44.7	14.7	87.3%	2.7%
HAXTUN RE-2J	1	0	1	0	2	295	25.2	12.3	100.0%	0.6%
<u>PITKIN COUNTY</u>										
ASPEN 1	1	1	1	0	3	1,268	96.3	13.4	89.0%	0.6%
<u>PROWERS COUNTY</u>										
GRANADA RE-1	1	0	1	0	2	312	26.0	11.9	83.3%	0.7%
LAMAR RE-2	4	1	1	1	7	1,953	N/A	N/A	68.9%	5.3%

TABLE 1

SUMMARY OF SCHOOL DISTRICT DATA

SCHOOL DISTRICT	NUMBER OF SCHOOLS					FALL 1999	FALL 1998	FALL 1998	1998-99	1998-99
	ELEMEN- TARY	MIDDLE/ JUNIOR	SENIOR HIGH	OTHER	TOTAL	PUPIL MEMBERSHIP	CLASSROOM TEACHER F.T.E.	PUPIL/ TEACHER RATIO	GRADUATION RATE	GRADES 7-12 DROPOUT RATE
<u>PROWERS COUNTY (Continued)</u>										
HOLLY RE-3	1	0	1	0	2	362	26.2	13.9	82.8%	4.1%
WILEY RE-13 JT	1	0	1	0	2	343	26.6	13.8	97.1%	0.0%
<u>PUEBLO COUNTY</u>										
PUEBLO CITY 60	22	7	5	1	35	17,564	1,063.0	16.7	85.6%	6.0%
PUEBLO COUNTY RURAL 70	8	7	4	1	20	6,845	342.6	18.8	81.1%	2.2%
<u>RIO BLANCO COUNTY</u>										
MEEKER RE1	1	1	1	0	3	706	46.3	16.2	90.8%	1.3%
RANGELY RE-4	1	1	1	0	3	713	43.3	17.2	89.7%	1.0%
<u>RIO GRANDE COUNTY</u>										
DEL NORTE C-7	2	1	1	0	4	727	65.5	11.1	93.0%	0.0%
MONTE VISTA C-8	2	1	2	1	6	1,414	92.8	15.6	85.8%	2.0%
SARGENT RE-33J	1	0	1	0	2	414	31.5	13.2	88.2%	6.8%
<u>ROUTT COUNTY</u>										
HAYDEN RE-1	1	1	1	0	3	553	30.3	19.1	84.1%	3.6%
STEAMBOAT SPRINGS RE-2	2	1	1	0	4	1,944	126.0	15.3	92.2%	1.1%
SOUTH ROUTT RE 3	1	1	1	0	3	457	36.2	12.7	91.4%	2.5%
<u>SAGUACHE COUNTY</u>										
MOUNTAIN VALLEY RE 1	1	1	1	0	3	188	N/A	N/A	93.8%	1.9%
MOFFAT 2	1	1	2	0	4	217	25.7	7.6	73.9%	0.8%
CENTER 26JT	1	1	1	0	3	682	55.0	13.3	56.9%	6.1%

TABLE 1

SUMMARY OF SCHOOL DISTRICT DATA

SCHOOL DISTRICT	NUMBER OF SCHOOLS					FALL 1999 PUPIL MEMBERSHIP	FALL 1998 CLASSROOM TEACHER F.T.E.	FALL 1998 PUPIL/ TEACHER RATIO	1998-99 GRADUATION RATE	1998-99 GRADES 7-12 DROPOUT RATE
	ELEMEN- TARY	MIDDLE/ JUNIOR	SENIOR HIGH	OTHER	TOTAL					
<u>SAN JUAN COUNTY</u>										
SILVERTON 1	1	0	1	0	2	84	10.4	8.2	87.5%	0.0%
<u>SAN MIGUEL COUNTY</u>										
TELLURIDE R-1	1	1	1	0	3	530	39.0	12.6	82.6%	1.1%
NORWOOD R-2J	1	0	1	0	2	316	N/A	N/A	88.2%	0.6%
<u>SEDGWICK COUNTY</u>										
JULESBURG RE-1	1	0	1	0	2	359	24.1	14.8	96.0%	0.6%
PLATTE VALLEY RE-3	1	0	1	0	2	156	19.7	7.1	100.0%	1.3%
<u>SUMMIT COUNTY</u>										
SUMMIT RE-1	6	1	2	0	9	2,622	168.2	15.0	84.6%	2.9%
<u>TELLER COUNTY</u>										
CRIPPLE CREEK-VICTOR RE-1	1	0	1	0	2	596	33.9	17.8	67.5%	1.8%
WOODLAND PARK RE-2	3	1	1	0	5	3,262	175.1	18.7	78.7%	2.8%
<u>WASHINGTON COUNTY</u>										
AKRON R-1	1	0	1	0	2	460	36.3	12.7	75.8%	2.6%
ARICKAREE R-2	1	0	1	0	2	117	18.8	7.0	100.0%	1.3%
OTIS R-3	1	0	1	0	2	211	20.7	10.2	85.0%	3.8%
LONE STAR 101	1	0	1	0	2	99	10.8	8.6	83.3%	0.0%
WOODLIN R-104	1	0	1	0	2	138	15.5	8.1	83.3%	0.0%

TABLE 1

SUMMARY OF SCHOOL DISTRICT DATA

SCHOOL DISTRICT	NUMBER OF SCHOOLS					FALL 1999	FALL 1998	FALL 1998	1998-99	1998-99
	ELEMEN- TARY	MIDDLE/ JUNIOR	SENIOR HIGH	OTHER	TOTAL	PUPIL	CLASSROOM	PUPIL/ TEACHER	GRADUATION	GRADES 7-12
						MEMBERSHIP	TEACHER F.T.E.	TEACHER RATIO	RATE	DROPOUT RATE
<u>WELD COUNTY</u>										
GILCREST RE-1	3	2	1	0	6	1,937	129.2	15.2	68.7%	5.3%
EATON RE-2	2	1	1	0	4	1,383	84.0	16.0	71.9%	2.7%
KEENESBURG RE-3(J)	2	0	1	0	3	1,601	90.4	16.7	91.5%	0.1%
WINDSOR RE-4	3	1	1	0	5	2,479	142.8	16.5	74.1%	2.7%
JOHNSTOWN-MILLIKEN RE-5J	2	1	1	0	4	1,618	93.5	15.4	63.4%	5.8%
GREELEY 6	14	7	5	4	30	15,335	821.2	17.8	69.5%	4.7%
PLATTE VALLEY RE-7	1	1	1	0	3	1,094	67.3	16.0	81.9%	2.5%
FORT LUPTON RE-8	2	1	1	0	4	2,642	162.3	16.2	70.5%	6.2%
AULT-HIGHLAND RE-9	1	1	1	0	3	884	67.2	13.2	70.8%	3.1%
BRIGGS DALE RE-10	1	0	1	0	2	138	16.2	8.3	100.0%	0.0%
PRAIRIE RE-11	1	0	1	0	2	121	19.5	6.7	100.0%	0.0%
PAWNEE RE-12	1	0	1	0	2	133	15.9	8.7	66.7%	0.0%
<u>YUMA COUNTY</u>										
WEST YUMA COUNTY RJ-1	3	1	2	0	6	1,077	80.2	13.5	88.2%	1.5%
EAST YUMA COUNTY RJ-2	2	1	2	0	5	964	77.0	13.1	91.6%	1.2%
<u>COLORADO BOCES</u>										
CENTENNIAL BOCES	0	0	0	1	1	120	7.0	18.8	48.0%	49.5%
EXPEDITIONARY BOCES	0	0	1	0	1	315	N/A	N/A	50.0%	0.0%
MOUNTAIN BOCES	0	0	0	3	3	117	13.0	8.2	72.3%	19.5%
PIKES PEAK BOCES	0	0	0	2	2	51	82.2	0.0	78.9%	14.8%
SANTA FE TRAIL BOCES	0	0	0	1	1	70	N/A	N/A	41.2%	17.9%
SOUTHEASTERN BOCES	1	0	0	0	1	0	5.0	0.0	0.0%	0.0%
STATE TOTALS	924	272	290	92	1,578	708,109	39,439.4	17.7	79.9%	3.3

TABLE 2

COLORADO DEPARTMENT OF EDUCATION
FALL MEMBERSHIP
BY SCHOOL DISTRICT AND GRADE

FALL 1999

		PREK	K	1	2	3	4	5	6	7	8	9	10	11	12	SPEC EDUC	UNGR PGRD	TOTAL
COUNTY: ADAMS																		
MAPLETON	1	222	414	434	422	421	416	398	394	388	379	375	386	337	222	0	0	5,208
NORTHGLENN-THORNTON	12	627	1998	2332	2387	2414	2307	2316	2274	2240	2231	2187	2059	1883	1607	0	85	28,947
ADAMS COUNTY	14	305	468	514	503	512	492	474	431	436	425	492	345	260	192	0	224	6,073
BRIGHTON	27J	166	343	430	417	418	405	383	424	403	400	447	399	362	311	0	0	5,308
BENNETT	29J	0	69	66	51	71	70	70	76	88	68	118	87	59	65	0	0	958
STRASBURG	31J	19	61	48	40	55	44	50	51	59	49	49	49	51	71	0	0	696
WESTMINSTER	50	301	840	933	941	900	918	922	944	903	842	829	827	732	607	0	0	11,439
		1640	4193	4757	4761	4791	4652	4613	4594	4517	4394	4497	4152	3684	3075	0	309	58,629
COUNTY: ALAMOSA																		
ALAMOSA	RE-11J	0	143	170	190	228	202	215	191	186	196	191	173	165	151	0	0	2,401
SANGRE DE CRISTO	RE-22J	0	16	23	21	26	18	25	21	39	29	29	29	26	26	0	0	328
		0	159	193	211	254	220	240	212	225	225	220	202	191	177	0	0	2,729
COUNTY: ARAPAHOE																		
ENGLEWOOD	1	177	236	267	271	265	286	258	268	332	316	433	476	476	317	0	0	4,378
SHERIDAN	2	38	138	132	126	117	126	138	151	172	176	194	138	142	181	0	0	1,969
CHERRY CREEK	5	284	2618	3046	3219	3116	3346	3262	3272	3262	3249	3297	3195	2985	2901	0	0	41,052
LITTLETON	6	237	1036	1096	1160	1228	1244	1259	1249	1268	1257	1397	1423	1289	1230	0	0	16,373
DEER TRAIL	26J	16	17	12	15	16	16	9	14	16	14	18	10	11	20	0	0	204
ADAMS-ARAPAHOE	28J	725	2491	2717	2573	2509	2473	2351	2248	2240	2169	2108	1810	1592	1633	0	0	29,639
BYERS	32J	49	40	21	41	25	39	35	28	34	38	33	45	28	35	0	0	491
		1526	6576	7291	7405	7276	7530	7312	7230	7324	7219	7480	7097	6523	6317	0	0	94,106
COUNTY: ARCHULETA																		
ARCHULETA COUNTY	50 JT	0	100	118	109	122	111	118	107	116	136	142	127	103	116	0	0	1,525
		0	100	118	109	122	111	118	107	116	136	142	127	103	116	0	0	1,525
COUNTY: BACA																		
WALSH	RE-1	42	11	15	16	15	12	11	12	27	21	12	25	18	12	0	0	249
PRITCHETT	RE-3	10	4	6	6	6	3	7	10	5	11	7	3	6	7	0	0	91
SPRINGFIELD	RE-4	35	24	18	30	17	23	27	26	25	30	33	21	35	30	0	0	374
VILAS	RE-5	3	6	1	2	5	3	5	10	8	5	8	12	16	9	0	0	93
CAMPO	RE-6	3	7	5	5	7	5	6	2	6	7	7	9	12	10	0	0	91
		93	52	45	59	50	46	56	60	71	74	67	70	87	68	0	0	898

TABLE 2

COLORADO DEPARTMENT OF EDUCATION
FALL MEMBERSHIP
BY SCHOOL DISTRICT AND GRADE

FALL 1999

		PREK	K	1	2	3	4	5	6	7	8	9	10	11	12	SPEC EDUC	UNGR PGRD	TOTAL
COUNTY: BENT																		
LAS ANIMAS	RE-1	0	53	63	53	49	56	45	59	56	54	77	45	59	47	0	0	716
MC CLAVE	RE-2	17	22	11	14	16	19	16	19	18	24	23	22	18	17	0	0	256
		17	75	74	67	65	75	61	78	74	78	100	67	77	64	0	0	972
COUNTY: BOULDER																		
ST VRAIN VALLEY	RE 1J	522	1270	1407	1455	1406	1504	1402	1428	1428	1468	1641	1444	1238	1137	0	0	18,750
BOULDER VALLEY	RE 2	222	1796	1949	2074	2044	2127	2107	2219	2128	2182	2386	2151	1874	1674	0	41	26,974
		744	3066	3356	3529	3450	3631	3509	3647	3556	3650	4027	3595	3112	2811	0	41	45,724
COUNTY: CHAFFEE																		
BUENA VISTA	R-31	3	59	64	57	73	72	77	76	80	88	123	94	98	57	0	0	1,021
SALIDA	R-32	25	45	81	86	92	98	116	92	116	105	110	105	104	86	0	0	1,261
		28	104	145	143	165	170	193	168	196	193	233	199	202	143	0	0	2,282
COUNTY: CHEYENNE																		
KIT CARSON	R-1	0	6	4	4	10	9	16	6	17	9	11	9	12	10	0	0	123
CHEYENNE COUNTY	RE-5	9	13	20	18	21	23	26	22	23	27	31	30	19	30	0	0	312
		9	19	24	22	31	32	42	28	40	36	42	39	31	40	0	0	435
COUNTY: CLEAR CREEK																		
CLEAR CREEK	RE-1	55	98	84	100	97	112	102	107	100	89	129	115	99	103	0	0	1,390
		55	98	84	100	97	112	102	107	100	89	129	115	99	103	0	0	1,390
COUNTY: CONEJOS																		
NORTH CONEJOS	RE-1J	0	68	83	80	85	93	92	105	86	88	108	82	89	77	0	32	1,168
SANFORD	6J	25	23	24	27	30	24	29	36	27	37	26	25	32	19	0	0	384
SOUTH CONEJOS	RE-10	4	29	23	35	24	38	36	32	29	39	39	30	27	40	0	0	425
		29	120	130	142	139	155	157	173	142	164	173	137	148	136	0	32	1,977

TABLE 2

COLORADO DEPARTMENT OF EDUCATION
FALL MEMBERSHIP
BY SCHOOL DISTRICT AND GRADE

FALL 1999

		PREK	K	1	2	3	4	5	6	7	8	9	10	11	12	SPEC EDUC	UNGR PGRD	TOTAL
COUNTY: COSTILLA																		
CENTENNIAL	R-1	13	20	27	15	24	25	36	29	21	25	23	23	23	24	0	0	328
SIERRA GRANDE	R-30	0	22	14	29	24	26	24	28	31	19	26	15	30	21	0	0	309
		13	42	41	44	48	51	60	57	52	44	49	38	53	45	0	0	637
COUNTY: CROWLEY																		
CROWLEY COUNTY,	RE-1-J	0	36	55	44	50	42	51	59	50	56	66	45	34	49	0	0	637
		0	36	55	44	50	42	51	59	50	56	66	45	34	49	0	0	637
COUNTY: CUSTER																		
CONSOLIDATED	C-1	35	31	21	32	34	25	26	26	32	38	40	34	34	25	0	0	433
		35	31	21	32	34	25	26	26	32	38	40	34	34	25	0	0	433
COUNTY: DELTA																		
DELTA COUNTY	50(J)	0	331	309	328	352	373	348	371	360	361	394	376	365	327	0	0	4,595
		0	331	309	328	352	373	348	371	360	361	394	376	365	327	0	0	4,595
COUNTY: DENVER																		
DENVER COUNTY	1	2908	5770	6168	6246	6055	5799	5440	5186	4883	4729	5355	4370	4031	2753	0	0	69,693
		2908	5770	6168	6246	6055	5799	5440	5186	4883	4729	5355	4370	4031	2753	0	0	69,693
COUNTY: DOLORES																		
DOLORES COUNTY	RE NO.2	11	24	22	25	31	21	33	22	29	23	23	28	25	22	0	0	339
		11	24	22	25	31	21	33	22	29	23	23	28	25	22	0	0	339
COUNTY: DOUGLAS																		
DOUGLAS COUNTY	RE 1	224	2614	2908	2901	2744	2667	2728	2562	2436	2458	2273	2201	2005	1655	0	70	32,446
		224	2614	2908	2901	2744	2667	2728	2562	2436	2458	2273	2201	2005	1655	0	70	32,446

TABLE 2

COLORADO DEPARTMENT OF EDUCATION
FALL MEMBERSHIP
BY SCHOOL DISTRICT AND GRADE

FALL 1999

		PREK	K	1	2	3	4	5	6	7	8	9	10	11	12	SPEC EDUC	UNGR PGRD	TOTAL
COUNTY: EAGLE																		
EAGLE COUNTY	RE 50	49	378	383	392	376	387	393	366	360	333	297	273	242	264	0	0	4,493
		49	378	383	392	376	387	393	366	360	333	297	273	242	264	0	0	4,493
COUNTY: ELBERT																		
ELIZABETH	C-1	26	182	181	212	205	209	213	218	211	198	227	249	164	169	0	0	2,664
KIOWA	C-2	6	23	21	34	37	24	34	26	39	29	30	38	33	22	0	0	396
BIG SANDY	100J	0	18	29	18	29	37	21	35	29	40	29	26	33	21	0	0	365
ELBERT	200	29	20	16	23	21	18	21	24	22	12	20	24	16	18	0	0	284
AGATE	300	7	10	5	7	5	4	8	6	3	10	6	8	9	12	0	0	100
		68	253	252	294	297	292	297	309	304	289	312	345	255	242	0	0	3,809
COUNTY: EL PASO																		
CALHAN RJ-1		30	35	29	49	38	50	51	44	58	47	42	44	42	34	0	0	593
HARRISON	2	6	934	960	943	923	884	861	752	730	716	915	737	563	525	0	0	10,449
WIDEFIELD	3	111	517	589	644	621	663	638	672	694	723	799	686	605	506	0	0	8,468
FOUNTAIN	8	123	494	515	436	469	436	377	370	368	338	300	271	254	175	0	0	4,926
COLORADO SPRINGS	11	0	2215	2534	2471	2565	2609	2527	2491	2432	2446	2938	2282	2016	2060	0	0	31,586
CHEYENNE MOUNTAIN	12	33	237	287	306	298	313	311	340	337	310	291	330	329	230	0	0	3,952
MANITOU SPRINGS	14	22	67	85	92	94	90	97	113	110	117	130	116	109	121	0	0	1,363
ACADEMY	20	75	1133	1111	1223	1291	1351	1304	1322	1407	1306	1488	1366	1232	1166	0	0	16,775
ELLCOTT	22	0	84	78	66	53	78	80	81	63	66	71	51	51	54	0	0	876
PEYTON	23 JT	3	41	41	44	51	64	58	54	61	59	47	62	46	34	0	0	665
HANOVER	28	0	9	11	16	20	20	11	18	19	20	19	18	12	16	0	0	209
LEWIS-PALMER	38	12	265	287	339	335	354	376	369	341	373	342	330	315	295	0	0	4,333
FALCON	49	50	406	458	462	459	455	442	410	411	401	455	397	348	303	0	0	5,457
EDISON	54 JT	0	8	5	9	5	8	4	4	7	11	7	3	4	7	0	0	82
MIAMI/YODER	60 JT	0	20	21	21	27	19	40	36	29	28	36	29	20	14	0	0	340
		465	6465	7011	7121	7249	7394	7177	7076	7067	6961	7880	6722	5946	5540	0	0	90,074
COUNTY: FREMONT																		
CANON CITY	RE-1	0	276	318	298	311	312	381	345	362	337	430	333	254	276	0	0	4,233
FLORENCE	RE-2	0	136	156	133	134	154	180	162	170	172	162	127	113	104	0	0	1,903
COTOPAXI	RE-3	2	15	24	28	24	27	31	29	31	39	31	30	30	21	0	0	362
		2	427	498	459	469	493	592	536	563	548	623	490	397	401	0	0	6,498

TABLE 2

COLORADO DEPARTMENT OF EDUCATION
FALL MEMBERSHIP
BY SCHOOL DISTRICT AND GRADE

FALL 1999

		PREK	K	1	2	3	4	5	6	7	8	9	10	11	12	SPEC EDUC	UNGR PGRD	TOTAL
COUNTY: GARFIELD																		
ROARING FORK	RE-1	78	346	356	358	370	374	369	379	382	390	434	366	328	314	0	0	4,844
GARFIELD RE-2		125	277	257	277	274	288	283	292	272	286	263	226	200	161	0	0	3,481
GARFIELD	16	21	65	81	85	69	78	50	51	47	55	61	55	37	36	0	0	791
		224	688	694	720	713	740	702	722	701	731	758	647	565	511	0	0	9,116
COUNTY: GILPIN																		
GILPIN COUNTY	RE-1	33	28	27	18	27	25	36	30	43	33	30	26	15	20	0	29	420
		33	28	27	18	27	25	36	30	43	33	30	26	15	20	0	29	420
COUNTY: GRAND																		
WEST GRAND	1-JT.	0	19	45	35	26	49	46	39	53	35	35	40	47	39	0	10	518
EAST GRAND	2	0	88	81	92	106	87	92	108	104	98	109	121	108	91	0	0	1,285
		0	107	126	127	132	136	138	147	157	133	144	161	155	130	0	10	1,803
COUNTY: GUNNISON																		
GUNNISON WATERSHED	RE1J	54	110	139	136	129	115	144	129	146	139	113	119	136	100	0	16	1,725
		54	110	139	136	129	115	144	129	146	139	113	119	136	100	0	16	1,725
COUNTY: HINSDALE																		
HINSDALE COUNTY	RE 1	14	7	9	4	2	5	4	1	5	4	5	2	4	4	0	0	70
		14	7	9	4	2	5	4	1	5	4	5	2	4	4	0	0	70
COUNTY: HUERFANO																		
HUERFANO	RE-1	47	61	61	65	49	53	61	73	78	69	66	54	49	36	0	0	822
LA VETA RE-2		20	18	27	21	22	27	20	23	25	20	31	18	35	20	0	0	327
		67	79	88	86	71	80	81	96	103	89	97	72	84	56	0	0	1,149
COUNTY: JACKSON																		
NORTH PARK	R-1	0	19	18	22	20	25	23	21	29	26	29	26	24	27	0	0	309
		0	19	18	22	20	25	23	21	29	26	29	26	24	27	0	0	309

TABLE 2

COLORADO DEPARTMENT OF EDUCATION
FALL MEMBERSHIP
BY SCHOOL DISTRICT AND GRADE

FALL 1999

		PREK	K	1	2	3	4	5	6	7	8	9	10	11	12	SPEC EDUC	UNGR PGRD	TOTAL
COUNTY: JEFFERSON																		
JEFFERSON COUNTY	R-1	1075	5778	6443	6711	6802	6991	6797	6965	7022	7084	7833	7008	6511	5559	0	0	88,579
		1075	5778	6443	6711	6802	6991	6797	6965	7022	7084	7833	7008	6511	5559	0	0	88,579
COUNTY: KIOWA																		
EADS	RE-1	21	13	15	22	19	13	23	13	14	25	23	30	22	24	0	0	277
PLAINVIEW	RE-2	0	6	4	6	6	2	5	4	6	3	11	7	8	8	0	0	76
		21	19	19	28	25	15	28	17	20	28	34	37	30	32	0	0	353
COUNTY: KIT CARSON																		
ARRIBA-FLAGLER	C-20	18	12	17	20	25	15	21	21	14	13	22	22	17	17	0	0	254
HI-PLAINS	R-23	8	5	7	15	16	4	9	9	10	9	12	12	6	3	0	0	125
STRATTON	R-4	25	12	23	18	17	21	18	22	18	21	28	20	18	20	0	0	281
BETHUNE	R-5	8	9	11	10	15	14	19	10	16	8	19	13	11	8	0	0	171
BURLINGTON	RE-6J	35	66	61	65	71	64	66	71	58	66	74	69	72	62	0	0	900
		94	104	119	128	144	118	133	133	116	117	155	136	124	110	0	0	1,731
COUNTY: LAKE																		
LAKE COUNTY	R-1	100	98	105	113	101	111	98	89	91	86	103	85	63	78	0	0	1,321
		100	98	105	113	101	111	98	89	91	86	103	85	63	78	0	0	1,321
COUNTY: LA PLATA																		
DURANGO	9-R	0	308	326	337	370	354	373	408	392	368	420	396	417	381	0	0	4,850
BAYFIELD	10 JT-R	15	59	63	61	92	88	64	84	73	94	104	93	88	69	0	0	1,047
IGNACIO	11 JT	0	69	87	79	83	84	67	88	66	79	101	62	73	84	0	6	1,028
		15	436	476	477	545	526	504	580	531	541	625	551	578	534	0	6	6,925
COUNTY: LARIMER																		
POUDRE	R-1	98	1645	1727	1749	1831	1837	1873	1903	1924	1938	1938	1876	1682	1413	0	0	23,434
THOMPSON	R-2J	0	948	978	1059	1081	1085	1108	1118	1152	1204	1201	1099	1038	975	0	140	14,186
PARK (ESTES PARK)	R-3	23	100	93	103	99	103	101	108	102	104	115	110	111	94	0	0	1,366
		121	2693	2798	2911	3011	3025	3082	3129	3178	3246	3254	3085	2831	2482	0	140	38,986

TABLE 2

COLORADO DEPARTMENT OF EDUCATION
FALL MEMBERSHIP
BY SCHOOL DISTRICT AND GRADE

FALL 1999

		PREK	K	1	2	3	4	5	6	7	8	9	10	11	12	SPEC EDUC	UNGR PGRD	TOTAL
COUNTY: LAS ANIMAS																		
TRINIDAD	1	90	131	106	127	128	125	125	138	137	118	115	92	107	125	0	0	1,664
PRIMERO REORGANIZED	2	0	18	12	13	13	19	14	14	14	17	16	10	7	10	0	0	177
HOEHNE REORGANIZED	3	0	20	21	20	28	30	26	21	26	39	28	27	29	22	0	0	337
AGUILAR REORGANIZED	6	8	11	13	13	12	12	15	12	11	10	12	15	11	16	0	0	171
BRANSON REORGANIZED	82	0	2	3	4	2	2	1	7	5	3	2	3	9	5	0	0	48
KIM REORGANIZED	88	5	4	5	9	5	5	9	4	6	3	9	1	3	10	0	0	78
		103	186	160	186	188	193	190	196	199	190	182	148	166	188	0	0	2,475
COUNTY: LINCOLN																		
GENOA-HUGO	C113	14	15	25	23	17	21	18	10	30	19	30	16	24	27	0	0	289
LIMON	RE-4J	33	51	44	41	38	62	50	49	57	54	55	43	47	39	0	0	663
KARVAL	RE-23	5	6	3	9	4	2	7	8	5	7	7	7	4	12	0	0	86
		52	72	72	73	59	85	75	67	92	80	92	66	75	78	0	0	1,038
COUNTY: LOGAN																		
VALLEY	RE-1	46	187	229	205	189	214	199	200	222	200	253	216	198	201	0	0	2,759
FRENCHMAN	RE-3	18	11	11	10	12	18	14	16	12	16	16	27	23	15	0	0	219
BUFFALO	RE-4	0	23	19	20	24	18	20	23	30	20	18	23	22	24	0	0	284
PLATEAU	RE-5	0	12	4	8	12	11	18	11	16	15	11	15	20	14	0	0	167
		64	233	263	243	237	261	251	250	280	251	298	281	263	254	0	0	3,429
COUNTY: MESA																		
DE BEQUE	49JT	10	15	9	6	6	9	10	16	14	20	16	8	13	17	0	0	169
PLATEAU VALLEY	50	11	24	26	17	29	20	34	34	35	34	31	25	33	26	0	161	540
MESA COUNTY VALLEY	51	324	1349	1448	1412	1423	1496	1420	1444	1493	1612	1631	1625	1439	1208	0	0	19,324
		345	1388	1483	1435	1458	1525	1464	1494	1542	1666	1678	1658	1485	1251	0	161	20,033
COUNTY: MINERAL																		
CREEDE CONSOLIDATED	1	9	13	8	8	9	15	12	7	20	12	8	11	9	12	0	0	153
		9	13	8	8	9	15	12	7	20	12	8	11	9	12	0	0	153

TABLE 2

COLORADO DEPARTMENT OF EDUCATION
FALL MEMBERSHIP
BY SCHOOL DISTRICT AND GRADE

FALL 1999

		PREK	K	1	2	3	4	5	6	7	8	9	10	11	12	SPEC EDUC	UNGR PGRD	TOTAL
COUNTY: MOFFAT																		
MOFFAT COUNTY	RE:NO 1	135	156	171	173	186	209	203	170	194	207	237	190	192	208	0	0	2,631
		135	156	171	173	186	209	203	170	194	207	237	190	192	208	0	0	2,631
COUNTY: MONTEZUMA																		
MONTEZUMA-CORTEZ	RE-1	60	242	335	267	241	261	275	266	234	234	236	215	229	223	0	156	3,474
DOLORRES	RE-4A	21	35	45	56	52	46	59	52	62	57	56	44	34	37	0	0	656
MANCOS	RE-6	4	22	39	28	28	34	45	41	45	45	46	53	35	42	0	0	507
		85	299	419	351	321	341	379	359	341	336	338	312	298	302	0	156	4,637
COUNTY: MONTROSE																		
MONTROSE COUNTY	RE-1J	102	393	400	397	399	405	381	402	424	397	419	442	362	337	0	84	5,344
WEST END	RE-2	36	27	30	30	33	31	38	35	42	34	39	51	46	26	0	0	498
		138	420	430	427	432	436	419	437	466	431	458	493	408	363	0	84	5,842
COUNTY: MORGAN																		
BRUSH	RE-2(J)	53	110	129	113	115	121	119	112	126	120	130	107	114	97	0	0	1,566
FORT MORGAN	RE-3	111	284	280	264	246	256	234	213	225	248	279	228	163	162	0	29	3,222
WELDON VALLEY	RE-20(J)	16	8	9	12	7	17	10	11	15	16	12	23	14	10	0	0	180
WIGGINS	RE-50(J)	39	43	29	50	47	34	47	44	55	44	59	39	37	35	0	0	602
		219	445	447	439	415	428	410	380	421	428	480	397	328	304	0	29	5,570
COUNTY: OTERO																		
EAST OTERO	R-1	0	126	135	133	133	148	135	147	133	150	153	147	104	105	0	0	1,749
ROCKY FORD	R-2	0	66	85	85	79	90	79	105	72	87	89	102	71	53	0	0	1,063
MANZANOLA	3J	0	25	18	24	18	21	19	22	22	18	28	21	17	22	0	0	275
FOWLER	R-4J	0	29	35	27	29	31	30	25	28	28	32	36	24	38	0	0	392
CHERAW	31	10	19	15	14	10	21	13	11	17	15	24	21	19	20	0	0	229
SWINK	33	0	26	23	26	23	28	24	28	28	24	36	22	32	28	0	0	348
		10	291	311	309	292	339	300	338	300	322	362	349	267	266	0	0	4,056

TABLE 2

COLORADO DEPARTMENT OF EDUCATION
FALL MEMBERSHIP
BY SCHOOL DISTRICT AND GRADE

FALL 1999

		PREK	K	1	2	3	4	5	6	7	8	9	10	11	12	SPEC EDUC	UNGR PGRD	TOTAL
COUNTY: OURAY																		
OURAY	R-1	16	12	21	19	19	19	19	15	18	14	24	17	17	26	0	0	256
RIDGWAY	R-2	11	22	19	26	25	23	25	22	28	19	23	24	23	20	0	0	310
		27	34	40	45	44	42	44	37	46	33	47	41	40	46	0	0	566
COUNTY: PARK																		
PLATTE CANYON	1	66	106	115	97	119	94	113	108	125	125	126	134	107	154	0	0	1,589
PARK COUNTY	RE-2	76	47	47	58	52	55	38	49	38	42	37	33	34	27	0	0	633
		142	153	162	155	171	149	151	157	163	167	163	167	141	181	0	0	2,222
COUNTY: PHILLIPS																		
HOLYOKE	RE-1J	0	64	40	48	46	53	53	56	45	56	53	55	53	41	0	0	663
HAXTUN	RE-2J	19	18	19	16	17	20	17	21	19	25	27	31	23	23	0	0	295
		19	82	59	64	63	73	70	77	64	81	80	86	76	64	0	0	958
COUNTY: PITKIN																		
ASPEN	1	2	98	71	110	88	85	113	102	100	100	121	97	82	99	0	0	1,268
		2	98	71	110	88	85	113	102	100	100	121	97	82	99	0	0	1,268
COUNTY: PROWERS																		
GRANADA	RE-1	15	20	24	17	31	19	27	27	24	24	18	19	24	23	0	0	312
LAMAR	RE-2	0	180	162	147	165	152	143	152	164	142	158	133	137	118	0	0	1,953
HOLLY	RE-3	24	20	30	19	24	24	25	36	30	36	23	20	32	19	0	0	362
WILEY	RE-13 JT	29	23	16	20	34	15	21	29	30	29	24	27	21	25	0	0	343
		68	243	232	203	254	210	216	244	248	231	223	199	214	185	0	0	2,970
COUNTY: PUEBLO																		
PUEBLO CITY	60	393	1309	1505	1403	1397	1300	1294	1208	1301	1310	1891	1221	1117	915	0	0	17,564
PUEBLO COUNTY RURAL	70	141	452	516	541	560	558	499	613	575	576	548	476	424	366	0	0	6,845
		534	1761	2021	1944	1957	1858	1793	1821	1876	1886	2439	1697	1541	1281	0	0	24,409

TABLE 2

COLORADO DEPARTMENT OF EDUCATION
FALL MEMBERSHIP
BY SCHOOL DISTRICT AND GRADE

FALL 1999

		PREK	K	1	2	3	4	5	6	7	8	9	10	11	12	SPEC EDUC	UNGR PGRD	TOTAL
COUNTY: RIO BLANCO																		
MEEKER	RE1	48	36	39	46	44	44	51	51	61	48	53	57	67	61	0	0	706
RANGELY	RE-4	31	32	45	41	41	61	43	58	65	51	61	64	66	54	0	0	713
		79	68	84	87	85	105	94	109	126	99	114	121	133	115	0	0	1,419
COUNTY: RIO GRANDE																		
DEL NORTE	C-7	0	51	60	60	51	53	62	67	61	63	52	53	44	50	0	0	727
MONTE VISTA	C-8	39	92	103	96	88	105	103	93	107	114	155	132	100	87	0	0	1,414
SARGENT	RE-33J	0	25	38	29	33	29	21	35	37	33	31	40	35	28	0	0	414
		39	168	201	185	172	187	186	195	205	210	238	225	179	165	0	0	2,555
COUNTY: ROUTT																		
HAYDEN	RE-1	35	33	47	41	42	46	48	31	41	28	40	41	43	37	0	0	553
STEAMBOAT SPRINGS	RE-2	29	87	138	144	148	178	153	164	162	168	167	150	149	107	0	0	1,944
SOUTH ROUTT	RE 3	0	26	30	35	35	40	36	36	42	41	37	28	44	27	0	0	457
		64	146	215	220	225	264	237	231	245	237	244	219	236	171	0	0	2,954
COUNTY: SAGUACHE																		
MOUNTAIN VALLEY	RE 1	0	13	14	20	14	11	13	11	14	13	17	18	17	13	0	0	188
MOFFAT	2	9	7	14	9	16	19	15	12	23	22	14	23	13	21	0	0	217
CENTER	26 JT	11	55	64	56	58	51	44	52	69	55	44	49	43	31	0	0	682
		20	75	92	85	88	81	72	75	106	90	75	90	73	65	0	0	1,087
COUNTY: SAN JUAN																		
SILVERTON	1	0	4	3	6	5	5	3	9	3	9	9	10	8	10	0	0	84
		0	4	3	6	5	5	3	9	3	9	9	10	8	10	0	0	84
COUNTY: SAN MIGUEL																		
TELLURIDE	R-1	20	37	37	42	44	40	23	57	44	37	39	43	27	40	0	0	530
NORWOOD	R-2J	22	17	19	24	29	22	21	30	20	27	26	18	21	20	0	0	316
		42	54	56	66	73	62	44	87	64	64	65	61	48	60	0	0	846

TABLE 2

COLORADO DEPARTMENT OF EDUCATION
FALL MEMBERSHIP
BY SCHOOL DISTRICT AND GRADE

FALL 1999

		PREK	K	1	2	3	4	5	6	7	8	9	10	11	12	SPEC EDUC	UNGR PGRD	TOTAL
COUNTY: SEDGWICK																		
JULESBURG	RE-1	36	32	20	28	29	20	19	29	24	16	26	25	29	26	0	0	359
PLATTE VALLEY	RE-3	3	9	13	8	9	17	8	15	12	12	17	11	12	10	0	0	156
		39	41	33	36	38	37	27	44	36	28	43	36	41	36	0	0	515
COUNTY: SUMMIT																		
SUMMIT	RE-1	56	221	186	212	217	198	227	193	223	167	193	206	182	141	0	0	2,622
		56	221	186	212	217	198	227	193	223	167	193	206	182	141	0	0	2,622
COUNTY: TELLER																		
CRIPPLE CREEK-VICTOR	RE-1	26	52	45	40	43	41	62	51	40	50	43	46	27	30	0	0	596
WOODLAND PARK	RE-2	96	177	197	187	251	254	246	261	251	283	272	284	253	250	0	0	3,262
		122	229	242	227	294	295	308	312	291	333	315	330	280	280	0	0	3,858
COUNTY: WASHINGTON																		
AKRON	R-1	9	26	51	26	35	27	32	32	44	38	40	36	30	34	0	0	460
ARICKAREE	R-2	8	10	4	6	10	9	10	5	5	9	5	10	12	14	0	0	117
OTIS	R-3	17	15	17	12	13	17	12	14	14	17	26	11	14	12	0	0	211
LONE STAR	101	0	6	5	8	6	10	6	6	9	8	10	9	8	8	0	0	99
WOODLIN	R-104	10	2	9	5	3	11	5	9	14	6	16	13	17	18	0	0	138
		44	59	86	57	67	74	65	66	86	78	97	79	81	86	0	0	1,025
COUNTY: WELD																		
GILCREST	RE-1	51	139	143	142	144	145	148	166	152	157	158	146	139	107	0	0	1,937
EATON	RE-2	0	88	119	104	113	101	90	101	115	107	134	109	113	89	0	0	1,383
KEENESBURG	RE-3(J)	0	109	144	133	139	124	141	127	149	103	145	112	96	79	0	0	1,601
WINDSOR	RE-4	74	182	189	173	195	187	180	186	188	196	216	186	176	151	0	0	2,479
JOHNSTOWN-MILLIKEN	RE-5J	0	113	237	143	123	117	105	121	127	114	124	102	112	80	0	0	1,618
GREELEY	6	235	1214	1347	1351	1289	1205	1304	1213	1119	1236	1074	1050	906	792	0	0	15,335
PLATTE VALLEY	RE-7	45	82	73	94	90	64	74	82	87	96	88	76	75	68	0	0	1,094
WELD COUNTY	RE-8	161	181	194	199	204	215	170	192	232	206	227	158	173	130	0	0	2,642
AULT-HIGHLAND	RE-9	0	71	52	70	71	64	77	61	79	70	87	82	58	42	0	0	884
BRIGGS DALE	RE-10	0	11	7	7	10	13	14	13	8	11	11	11	9	13	0	0	138
PRAIRIE	RE-11	4	10	10	6	11	5	7	8	9	11	5	12	10	13	0	0	121
PAWNEE	RE-12	0	8	5	8	11	15	11	16	8	14	8	9	11	9	0	0	133
		570	2208	2520	2430	2400	2255	2321	2286	2273	2321	2277	2053	1878	1573	0	0	29,365

TABLE 2

COLORADO DEPARTMENT OF EDUCATION
FALL MEMBERSHIP
BY SCHOOL DISTRICT AND GRADE

FALL 1999

		PREK	K	1	2	3	4	5	6	7	8	9	10	11	12	SPEC EDUC	UNGR PGRD	TOTAL
COUNTY: YUMA																		
WEST YUMA COUNTY	RJ-1	48	72	76	86	90	69	78	82	87	74	88	65	87	75	0	0	1,077
EAST YUMA COUNTY	RJ-2	48	40	58	54	63	60	62	66	83	77	82	105	87	79	0	0	964
		96	112	134	140	153	129	140	148	170	151	170	170	174	154	0	0	2,041
COUNTY: COLORADO BOCS																		
MOUNTAIN BOCS		0	0	0	0	0	0	0	1	1	6	1	0	0	0	0	108	117
CENTENNIAL BOCS		0	0	0	0	0	0	0	0	0	0	32	49	30	9	0	0	120
PIKES PEAK BOCS		0	0	0	0	0	0	0	0	0	0	1	13	16	21	0	0	51
EXPEDITIONARY BOCS		0	20	24	24	25	23	24	32	36	30	28	17	17	15	0	0	315
SANTA FE TRAIL BOCS		0	0	0	0	0	0	0	0	0	0	0	0	0	0	0	70	70
		0	20	24	24	25	23	24	33	37	36	62	79	63	45	0	178	673
** STATE TOTALS:		12857	50378	55171	55855	55883	56154	55156	54957	54856	54599	58710	52548	47725	41999	0	1261	708,109

TABLE 3

COLORADO DEPARTMENT OF EDUCATION
FALL MEMBERSHIP
BY SCHOOL DISTRICT AND ETHNIC/RACIAL GROUP

FALL 1999

SCHOOL DISTRICT		AMERICAN INDIAN	ASIAN AMERICAN	BLACK AMERICAN	HISPANIC	WHITE	TOTAL	PERCENT MINORITY
COUNTY: ADAMS								
MAPLETON	1	123	159	98	2,033	2,795	5,208	46.3 %
NORTHGLENN-THORNTON	12	411	1,217	636	6,020	20,663	28,947	28.6 %
ADAMS COUNTY	14	140	25	158	3,582	2,168	6,073	64.3 %
BRIGHTON	27J	39	59	49	2,115	3,046	5,308	42.6 %
BENNETT	29J	9	4	7	48	890	958	7.1 %
STRASBURG	31J	3	8	6	34	645	696	7.3 %
WESTMINSTER	50	171	1,203	222	4,349	5,494	11,439	52.0 %
		-----	-----	-----	-----	-----	-----	-----
		896	2,675	1,176	18,181	35,701	58,629	39.1 %
COUNTY: ALAMOSA								
ALAMOSA	RE-11J	23	15	20	1,259	1,084	2,401	54.9 %
SANGRE DE CRISTO	RE-22J	2	3	12	65	246	328	25.0 %
		-----	-----	-----	-----	-----	-----	-----
		25	18	32	1,324	1,330	2,729	51.3 %
COUNTY: ARAPAHOE								
ENGLEWOOD	1	84	71	116	768	3,339	4,378	23.7 %
SHERIDAN	2	28	70	60	828	983	1,969	50.1 %
CHERRY CREEK	5	167	2,334	3,588	2,654	32,309	41,052	21.3 %
LITTLETON	6	137	375	220	988	14,653	16,373	10.5 %
DEER TRAIL	26J		2	1	6	195	204	4.4 %
ADAMS-ARAPAHOE	28J	277	1,409	7,060	7,828	13,065	29,639	55.9 %
BYERS	32J	2		5	14	470	491	4.3 %
		-----	-----	-----	-----	-----	-----	-----
		695	4,261	11,050	13,086	65,014	94,106	30.9 %
COUNTY: ARCHULETA								
ARCHULETA COUNTY	50 JT	16	1	10	305	1,193	1,525	21.8 %
		-----	-----	-----	-----	-----	-----	-----
		16	1	10	305	1,193	1,525	21.8 %
COUNTY: BACA								
WALSH	RE-1	1	1	2	35	210	249	15.7 %
PRITCHETT	RE-3			2	4	85	91	6.6 %
SPRINGFIELD	RE-4	1	3	2	40	328	374	12.3 %
VILAS	RE-5	2	1		14	76	93	18.3 %
CAMPO	RE-6				3	88	91	3.3 %
		-----	-----	-----	-----	-----	-----	-----
		4	5	6	96	787	898	12.4 %

TABLE 3

COLORADO DEPARTMENT OF EDUCATION
FALL MEMBERSHIP
BY SCHOOL DISTRICT AND ETHNIC/RACIAL GROUP

FALL 1999

SCHOOL DISTRICT		AMERICAN INDIAN	ASIAN AMERICAN	BLACK AMERICAN	HISPANIC	WHITE	TOTAL	PERCENT MINORITY
COUNTY: BENT								
LAS ANIMAS	RE-1	6	3	5	293	409	716	42.9 %
MC CLAVE	RE-2			1	60	195	256	23.8 %
		-----	-----	-----	-----	-----	-----	-----
		6	3	6	353	604	972	37.9 %
COUNTY: BOULDER								
ST VRRAIN VALLEY	RE 1J	192	380	121	3,771	14,286	18,750	23.8 %
BOULDER VALLEY	RE 2	215	1,314	470	2,993	21,982	26,974	18.5 %
		-----	-----	-----	-----	-----	-----	-----
		407	1,694	591	6,764	36,268	45,724	20.7 %
COUNTY: CHAFFEE								
BUENA VISTA	R-31	4	4	9	38	966	1,021	5.4 %
SALIDA	R-32	21	11	1	122	1,106	1,261	12.3 %
		-----	-----	-----	-----	-----	-----	-----
		25	15	10	160	2,072	2,282	9.2 %
COUNTY: CHEYENNE								
KIT CARSON	R-1		3		10	110	123	10.6 %
CHEYENNE COUNTY	RE-5		1		34	277	312	11.2 %
		-----	-----	-----	-----	-----	-----	-----
		0	4	0	44	387	435	11.0 %
COUNTY: CLEAR CREEK								
CLEAR CREEK	RE-1	26	18	12	62	1,272	1,390	8.5 %
		-----	-----	-----	-----	-----	-----	-----
		26	18	12	62	1,272	1,390	8.5 %
COUNTY: CONEJOS								
NORTH CONEJOS	RE-1J	2		2	602	562	1,168	51.9 %
SANFORD	6J				127	257	384	33.1 %
SOUTH CONEJOS	RE-10			7	388	30	425	92.9 %
		-----	-----	-----	-----	-----	-----	-----
		2	0	9	1,117	849	1,977	57.1 %

TABLE 3

COLORADO DEPARTMENT OF EDUCATION
FALL MEMBERSHIP
BY SCHOOL DISTRICT AND ETHNIC/RACIAL GROUP

FALL 1999

SCHOOL DISTRICT		AMERICAN INDIAN	ASIAN AMERICAN	BLACK AMERICAN	HISPANIC	WHITE	TOTAL	PERCENT MINORITY
COUNTY: COSTILLA								
CENTENNIAL	R-1	5	3	2	293	25	328	92.4 %
SIERRA GRANDE	R-30	4	9	1	209	86	309	72.2 %
		-----	-----	-----	-----	-----	-----	-----
		9	12	3	502	111	637	82.6 %
COUNTY: CROWLEY								
CROWLEY COUNTY	RE-1-J	5	5	3	186	438	637	31.2 %
		-----	-----	-----	-----	-----	-----	-----
		5	5	3	186	438	637	31.2 %
COUNTY: CUSTER								
CONSOLIDATED	C-1	6		4	13	410	433	5.3 %
		-----	-----	-----	-----	-----	-----	-----
		6	0	4	13	410	433	5.3 %
COUNTY: DELTA								
DELTA COUNTY	50(J)	40	25	14	665	3,851	4,595	16.2 %
		-----	-----	-----	-----	-----	-----	-----
		40	25	14	665	3,851	4,595	16.2 %
COUNTY: DENVER								
DENVER COUNTY	1	907	2,365	14,527	35,614	16,280	69,693	76.6 %
		-----	-----	-----	-----	-----	-----	-----
		907	2,365	14,527	35,614	16,280	69,693	76.6 %
COUNTY: DOLORES								
DOLORES COUNTY	RE NO.2	8	9	1	14	307	339	9.4 %
		-----	-----	-----	-----	-----	-----	-----
		8	9	1	14	307	339	9.4 %
COUNTY: DOUGLAS								
DOUGLAS COUNTY	RE 1	161	889	420	1,422	29,554	32,446	8.9 %
		-----	-----	-----	-----	-----	-----	-----
		161	889	420	1,422	29,554	32,446	8.9 %

TABLE 3

COLORADO DEPARTMENT OF EDUCATION
FALL MEMBERSHIP
BY SCHOOL DISTRICT AND ETHNIC/RACIAL GROUP

FALL 1999

SCHOOL DISTRICT		AMERICAN INDIAN	ASIAN AMERICAN	BLACK AMERICAN	HISPANIC	WHITE	TOTAL	PERCENT MINORITY
COUNTY: EAGLE								
EAGLE COUNTY	RE 50	11	25	24	1,412	3,021	4,493	32.8 %
		-----	-----	-----	-----	-----	-----	-----
		11	25	24	1,412	3,021	4,493	32.8 %
COUNTY: ELBERT								
ELIZABETH	C-1	32	26	25	115	2,466	2,664	7.4 %
KIOWA	C-2	3	4	13	6	370	396	6.6 %
BIG SANDY	100J	4	1	1	21	338	365	7.4 %
ELBERT	200	5	1	3	10	265	284	6.7 %
AGATE	300	3			13	84	100	16.0 %
		-----	-----	-----	-----	-----	-----	-----
		47	32	42	165	3,523	3,809	7.5 %
COUNTY: EL PASO								
CALHAN RJ-1		9	8	3	12	561	593	5.4 %
HARRISON	2	152	537	2,758	2,511	4,491	10,449	57.0 %
WIDEFIELD	3	127	362	1,320	1,146	5,513	8,468	34.9 %
FOUNTAIN	8	93	153	960	696	3,024	4,926	38.6 %
COLORADO SPRINGS	11	357	735	3,053	4,942	22,499	31,586	28.8 %
CHEYENNE MOUNTAIN	12	20	167	63	218	3,484	3,952	11.8 %
MANITOU SPRINGS	14	18	22	9	65	1,249	1,363	8.4 %
ACADEMY	20	192	528	577	802	14,676	16,775	12.5 %
ELLICOTT	22	1		15	70	790	876	9.8 %
PEYTON	23 JT	6	8	16	13	622	665	6.5 %
HANOVER	28	2	2	8	39	158	209	24.4 %
LEWIS-PALMER	38	25	84	57	105	4,062	4,333	6.3 %
FALCON	49	128	280	419	457	4,173	5,457	23.5 %
EDISON	54 JT	2		5	3	72	82	12.2 %
MIAMI/YODER	60 JT	1	1	7	29	302	340	11.2 %
		-----	-----	-----	-----	-----	-----	-----
		1,133	2,887	9,270	11,108	65,676	90,074	27.1 %
COUNTY: FREMONT								
CANON CITY	RE-1	34	30	21	290	3,858	4,233	8.9 %
FLORENCE	RE-2	12	10	13	216	1,652	1,903	13.2 %
COTOPAXI	RE-3	1	3	1	30	327	362	9.7 %
		-----	-----	-----	-----	-----	-----	-----
		47	43	35	536	5,837	6,498	10.2 %

TABLE 3

COLORADO DEPARTMENT OF EDUCATION
FALL MEMBERSHIP
BY SCHOOL DISTRICT AND ETHNIC/RACIAL GROUP

FALL 1999

SCHOOL DISTRICT		AMERICAN INDIAN	ASIAN AMERICAN	BLACK AMERICAN	HISPANIC	WHITE	TOTAL	PERCENT MINORITY
COUNTY: GARFIELD								
ROARING FORK	RE-1	20	42	12	1,049	3,721	4,844	23.2 %
GARFIELD RE-2		25	12	17	543	2,884	3,481	17.2 %
GARFIELD	16	3	5	2	85	696	791	12.0 %
		-----	-----	-----	-----	-----	-----	-----
		48	59	31	1,677	7,301	9,116	19.9 %
COUNTY: GILPIN								
GILPIN COUNTY	RE-1	6		5	14	395	420	6.0 %
		-----	-----	-----	-----	-----	-----	-----
		6	0	5	14	395	420	6.0 %
COUNTY: GRAND								
WEST GRAND	1-JT.		5		41	472	518	8.9 %
EAST GRAND	2	9	11	5	44	1,216	1,285	5.4 %
		-----	-----	-----	-----	-----	-----	-----
		9	16	5	85	1,688	1,803	6.4 %
COUNTY: GUNNISON								
GUNNISON WATERSHED	RE1J	38	15	6	98	1,568	1,725	9.1 %
		-----	-----	-----	-----	-----	-----	-----
		38	15	6	98	1,568	1,725	9.1 %
COUNTY: HINSDALE								
HINSDALE COUNTY	RE 1				1	69	70	1.4 %
		-----	-----	-----	-----	-----	-----	-----
		0	0	0	1	69	70	1.4 %
COUNTY: HUERFANO								
HUERFANO	RE-1	9	4	10	486	313	822	61.9 %
LA VETA RE-2				2	52	273	327	16.5 %
		-----	-----	-----	-----	-----	-----	-----
		9	4	12	538	586	1,149	49.0 %
COUNTY: JACKSON								
NORTH PARK	R-1	1	3		33	272	309	12.0 %
		-----	-----	-----	-----	-----	-----	-----
		1	3	0	33	272	309	12.0 %

TABLE 3

COLORADO DEPARTMENT OF EDUCATION
FALL MEMBERSHIP
BY SCHOOL DISTRICT AND ETHNIC/RACIAL GROUP

FALL 1999

SCHOOL DISTRICT		AMERICAN INDIAN	ASIAN AMERICAN	BLACK AMERICAN	HISPANIC	WHITE	TOTAL	PERCENT MINORITY
COUNTY: JEFFERSON								
JEFFERSON COUNTY	R-1	726	2,814	1,155	9,742	74,142	88,579	16.3 %
		-----	-----	-----	-----	-----	-----	-----
		726	2,814	1,155	9,742	74,142	88,579	16.3 %
COUNTY: KIOWA								
EADS	RE-1	3			7	267	277	3.6 %
PLAINVIEW	RE-2				4	72	76	5.3 %
		-----	-----	-----	-----	-----	-----	-----
		3	0	0	11	339	353	4.0 %
COUNTY: KIT CARSON								
ARRIBA-FLAGLER	C-20	5	1		5	243	254	4.3 %
HI-PLAINS	R-23				5	120	125	4.0 %
STRATTON	R-4		2		22	257	281	8.5 %
BETHUNE	R-5	3		1	42	125	171	26.9 %
BURLINGTON	RE-6J	2	5	3	206	684	900	24.0 %
		-----	-----	-----	-----	-----	-----	-----
		10	8	4	280	1,429	1,731	17.4 %
COUNTY: LAKE								
LAKE COUNTY	R-1	9	10	7	677	618	1,321	53.2 %
		-----	-----	-----	-----	-----	-----	-----
		9	10	7	677	618	1,321	53.2 %
COUNTY: LA PLATA								
DURANGO	9-R	218	30	24	547	4,031	4,850	16.9 %
BAYFIELD	10 JT-R	18	2	8	64	955	1,047	8.8 %
IGNACIO	11 JT	371	3	10	213	431	1,028	58.1 %
		-----	-----	-----	-----	-----	-----	-----
		607	35	42	824	5,417	6,925	21.8 %
COUNTY: LARIMER								
POUDRE	R-1	248	663	347	2,581	19,595	23,434	16.4 %
THOMPSON	R-2J	142	168	96	1,205	12,575	14,186	11.4 %
PARK (ESTES PARK)	R-3	12	16	10	76	1,252	1,366	8.3 %
		-----	-----	-----	-----	-----	-----	-----
		402	847	453	3,862	33,422	38,986	14.3 %

TABLE 3

COLORADO DEPARTMENT OF EDUCATION
FALL MEMBERSHIP
BY SCHOOL DISTRICT AND ETHNIC/RACIAL GROUP

FALL 1999

SCHOOL DISTRICT		AMERICAN INDIAN	ASIAN AMERICAN	BLACK AMERICAN	HISPANIC	WHITE	TOTAL	PERCENT MINORITY
COUNTY: LAS ANIMAS								
TRINIDAD	1	19	11	15	1,002	617	1,664	62.9 %
PRIMERO REORGANIZED	2		1		57	119	177	32.8 %
HOEHNE REORGANIZED	3			5	95	237	337	29.7 %
AGUILAR REORGANIZED	6	2			76	93	171	45.6 %
BRANSON REORGANIZED	82				5	43	48	10.4 %
KIM REORGANIZED	88				4	74	78	5.1 %
		-----	-----	-----	-----	-----	-----	-----
		21	12	20	1,239	1,183	2,475	52.2 %
COUNTY: LINCOLN								
GENOA-HUGO	C113	2		9	21	257	289	11.1 %
LIMON	RE-4J	13	3	7	37	603	663	9.0 %
KARVAL	RE-23		1			85	86	1.2 %
		-----	-----	-----	-----	-----	-----	-----
		15	4	16	58	945	1,038	9.0 %
COUNTY: LOGAN								
VALLEY	RE-1	22	17	17	442	2,261	2,759	18.1 %
FRENCHMAN	RE-3				12	207	219	5.5 %
BUFFALO	RE-4		1	2	23	258	284	9.2 %
PLATEAU	RE-5			2	2	163	167	2.4 %
		-----	-----	-----	-----	-----	-----	-----
		22	18	21	479	2,889	3,429	15.7 %
COUNTY: MESA								
DE BEQUE	49JT	12			16	141	169	16.6 %
PLATEAU VALLEY	50	15	1	24	62	438	540	18.9 %
MESA COUNTY VALLEY	51	186	178	150	2,478	16,332	19,324	15.5 %
		-----	-----	-----	-----	-----	-----	-----
		213	179	174	2,556	16,911	20,033	15.6 %
COUNTY: MINERAL								
CREEDE CONSOLIDATED	1	1			1	151	153	1.3 %
		-----	-----	-----	-----	-----	-----	-----
		1	0	0	1	151	153	1.3 %

TABLE 3

COLORADO DEPARTMENT OF EDUCATION
FALL MEMBERSHIP
BY SCHOOL DISTRICT AND ETHNIC/RACIAL GROUP

FALL 1999

SCHOOL DISTRICT		AMERICAN INDIAN	ASIAN AMERICAN	BLACK AMERICAN	HISPANIC	WHITE	TOTAL	PERCENT MINORITY
COUNTY: MOFFAT								
MOFFAT COUNTY	RE:NO 1	24	12	8	209	2,378	2,631	9.6 %
		-----	-----	-----	-----	-----	-----	-----
		24	12	8	209	2,378	2,631	9.6 %
COUNTY: MONTEZUMA								
MONTEZUMA-CORTEZ	RE-1	763	17	19	370	2,305	3,474	33.6 %
DOLORES	RE-4A	43	5	2	68	538	656	18.0 %
MANCOS	RE-6	27	3	4	78	395	507	22.1 %
		-----	-----	-----	-----	-----	-----	-----
		833	25	25	516	3,238	4,637	30.2 %
COUNTY: MONTROSE								
MONTROSE COUNTY	RE-1J	28	37	32	1,096	4,151	5,344	22.3 %
WEST END	RE-2	5	3		8	482	498	3.2 %
		-----	-----	-----	-----	-----	-----	-----
		33	40	32	1,104	4,633	5,842	20.7 %
COUNTY: MORGAN								
BRUSH	RE-2(J)	7	2	10	564	983	1,566	37.2 %
FORT MORGAN	RE-3	8	16	12	1,478	1,708	3,222	47.0 %
WELDON VALLEY	RE-20(J)				18	162	180	10.0 %
WIGGINS	RE-50(J)	10	8	7	118	459	602	23.8 %
		-----	-----	-----	-----	-----	-----	-----
		25	26	29	2,178	3,312	5,570	40.5 %
COUNTY: OTERO								
EAST OTERO	R-1	19	6	24	851	849	1,749	51.5 %
ROCKY FORD	R-2	2	11	4	697	349	1,063	67.2 %
MANZANOLA	3J		1	1	165	108	275	60.7 %
FOWLER	R-4J		1	1	56	334	392	14.8 %
CHERAW	31				33	196	229	14.4 %
SWINK	33	3	2	4	51	288	348	17.2 %
		-----	-----	-----	-----	-----	-----	-----
		24	21	34	1,853	2,124	4,056	47.6 %
COUNTY: OURAY								
OURAY	R-1		2	1	12	241	256	5.9 %
RIDGWAY	R-2	1	6		16	287	310	7.4 %
		-----	-----	-----	-----	-----	-----	-----
		1	8	1	28	528	566	6.7 %

TABLE 3

COLORADO DEPARTMENT OF EDUCATION
FALL MEMBERSHIP
BY SCHOOL DISTRICT AND ETHNIC/RACIAL GROUP

FALL 1999

SCHOOL DISTRICT		AMERICAN INDIAN	ASIAN AMERICAN	BLACK AMERICAN	HISPANIC	WHITE	TOTAL	PERCENT MINORITY
COUNTY: PARK								
PLATTE CANYON	1	26	15	16	63	1,469	1,589	7.6 %
PARK COUNTY	RE-2	5		8	45	575	633	9.2 %
		-----	-----	-----	-----	-----	-----	-----
		31	15	24	108	2,044	2,222	8.0 %
COUNTY: PHILLIPS								
HOLYOKE	RE-1J	1	1		117	544	663	17.9 %
HAXTUN	RE-2J		9	2	5	279	295	5.4 %
		-----	-----	-----	-----	-----	-----	-----
		1	10	2	122	823	958	14.1 %
COUNTY: PITKIN								
ASPEN	1	3	25	6	87	1,147	1,268	9.5 %
		-----	-----	-----	-----	-----	-----	-----
		3	25	6	87	1,147	1,268	9.5 %
COUNTY: PROWERS								
GRANADA	RE-1				194	118	312	62.2 %
LAMAR	RE-2	2	8	10	788	1,145	1,953	41.4 %
HOLLY	RE-3	2			106	254	362	29.8 %
WILEY	RE-13 JT				50	293	343	14.6 %
		-----	-----	-----	-----	-----	-----	-----
		4	8	10	1,138	1,810	2,970	39.1 %
COUNTY: PUEBLO								
PUEBLO CITY	60	306	115	381	9,464	7,298	17,564	58.4 %
PUEBLO COUNTY RURAL	70	44	48	65	1,582	5,106	6,845	25.4 %
		-----	-----	-----	-----	-----	-----	-----
		350	163	446	11,046	12,404	24,409	49.2 %
COUNTY: RIO BLANCO								
MEEKER	RE1	9	2	1	45	649	706	8.1 %
RANGELY	RE-4	8		1	35	669	713	6.2 %
		-----	-----	-----	-----	-----	-----	-----
		17	2	2	80	1,318	1,419	7.1 %

TABLE 3

COLORADO DEPARTMENT OF EDUCATION
FALL MEMBERSHIP
BY SCHOOL DISTRICT AND ETHNIC/RACIAL GROUP

FALL 1999

SCHOOL DISTRICT		AMERICAN INDIAN	ASIAN AMERICAN	BLACK AMERICAN	HISPANIC	WHITE	TOTAL	PERCENT MINORITY
COUNTY: RIO GRANDE								
DEL NORTE	C-7	4			321	402	727	44.7 %
MONTE VISTA	C-8	7	2	3	805	597	1,414	57.8 %
SARGENT	RE-33J	6	3		127	278	414	32.9 %
		-----	-----	-----	-----	-----	-----	-----
		17	5	3	1,253	1,277	2,555	50.0 %
COUNTY: ROUTT								
HAYDEN	RE-1	2		5	25	521	553	5.8 %
STEAMBOAT SPRINGS	RE-2	6	17	3	39	1,879	1,944	3.3 %
SOUTH ROUTT	RE 3	1	1	1	24	430	457	5.9 %
		-----	-----	-----	-----	-----	-----	-----
		9	18	9	88	2,830	2,954	4.2 %
COUNTY: SAGUACHE								
MOUNTAIN VALLEY	RE 1	5			59	124	188	34.0 %
MOFFAT	2		8	3	31	175	217	19.4 %
CENTER	26 JT	10	1		602	69	682	89.9 %
		-----	-----	-----	-----	-----	-----	-----
		15	9	3	692	368	1,087	66.1 %
COUNTY: SAN JUAN								
SILVERTON	1				12	72	84	14.3 %
		-----	-----	-----	-----	-----	-----	-----
		0	0	0	12	72	84	14.3 %
COUNTY: SAN MIGUEL								
TELLURIDE	R-1	1			15	514	530	3.0 %
NORWOOD	R-2J	5	3	5	8	295	316	6.6 %
		-----	-----	-----	-----	-----	-----	-----
		6	3	5	23	809	846	4.4 %
COUNTY: SEDGWICK								
JULESBURG	RE-1		4	4	84	267	359	25.6 %
PLATTE VALLEY	RE-3		2	1	24	129	156	17.3 %
		-----	-----	-----	-----	-----	-----	-----
		0	6	5	108	396	515	23.1 %

TABLE 3

COLORADO DEPARTMENT OF EDUCATION
FALL MEMBERSHIP
BY SCHOOL DISTRICT AND ETHNIC/RACIAL GROUP

FALL 1999

SCHOOL DISTRICT		AMERICAN INDIAN	ASIAN AMERICAN	BLACK AMERICAN	HISPANIC	WHITE	TOTAL	PERCENT MINORITY
COUNTY: SUMMIT								
SUMMIT	RE-1	6	34	8	276	2,298	2,622	12.4 %
		-----	-----	-----	-----	-----	-----	-----
		6	34	8	276	2,298	2,622	12.4 %
COUNTY: TELLER								
CRIPPLE CREEK-VICTOR	RE-1	16	3	9	31	537	596	9.9 %
WOODLAND PARK	RE-2	36	45	24	116	3,041	3,262	6.8 %
		-----	-----	-----	-----	-----	-----	-----
		52	48	33	147	3,578	3,858	7.3 %
COUNTY: WASHINGTON								
AKRON	R-1	3	7		60	390	460	15.2 %
ARICKAREE	R-2	1			6	110	117	6.0 %
OTIS	R-3				4	207	211	1.9 %
LONE STAR	101		3		6	90	99	9.1 %
WOODLIN	R-104		1		8	129	138	6.5 %
		-----	-----	-----	-----	-----	-----	-----
		4	11	0	84	926	1,025	9.7 %
COUNTY: WELD								
GILCREST	RE-1	12	11	6	845	1,063	1,937	45.1 %
EATON	RE-2	5	13	5	287	1,073	1,383	22.4 %
KEENESBURG	RE-3(J)	8	11	4	341	1,237	1,601	22.7 %
WINDSOR	RE-4	19	17	23	314	2,106	2,479	15.0 %
JOHNSTOWN-MILLIKEN	RE-5J	4	4	3	648	959	1,618	40.7 %
GREELEY	6	95	181	167	6,263	8,629	15,335	43.7 %
PLATTE VALLEY	RE-7	16	9		240	829	1,094	24.2 %
WELD COUNTY RE-8		11	14	18	1,262	1,337	2,642	49.4 %
AULT-HIGHLAND	RE-9	5	4	4	292	579	884	34.5 %
BRIGGSDALE	RE-10		4		6	128	138	7.2 %
PRAIRIE	RE-11		1	1	3	116	121	4.1 %
PAWNEE	RE-12				6	127	133	4.5 %
		-----	-----	-----	-----	-----	-----	-----
		175	269	231	10,507	18,183	29,365	38.1 %
COUNTY: YUMA								
WEST YUMA COUNTY	RJ-1	8	1	4	239	825	1,077	23.4 %
EAST YUMA COUNTY	RJ-2	2	4	3	80	875	964	9.2 %
		-----	-----	-----	-----	-----	-----	-----
		10	5	7	319	1,700	2,041	16.7 %

TABLE 3

COLORADO DEPARTMENT OF EDUCATION
FALL MEMBERSHIP
BY SCHOOL DISTRICT AND ETHNIC/RACIAL GROUP

FALL 1999

SCHOOL DISTRICT	AMERICAN INDIAN	ASIAN AMERICAN	BLACK AMERICAN	HISPANIC	WHITE	TOTAL	PERCENT MINORITY
COUNTY: COLORADO BOCs							
MOUNTAIN BOCs				12	105	117	10.3 %
CENTENNIAL BOCs			1	67	52	120	56.7 %
PIKES PEAK BOCs		2		10	39	51	23.5 %
EXPEDITIONARY BOCs	2	17	34	32	230	315	27.0 %
SANTA FE TRAIL BOCs			2	44	24	70	65.7 %
	-----	-----	-----	-----	-----	-----	-----
	2	19	37	165	450	673	33.1 %
** STATE TOTALS:	8,258	19,792	40,156	147,447	492,456	708,109	30.5 %

TABLE 4

RANKING OF COLORADO SCHOOL DISTRICTS BY 1999 FALL MEMBERSHIP

COUNTY	DISTRICT	MEMBERSHIP	COUNTY	DISTRICT	MEMBERSHIP
Jefferson	Jefferson County R-1	88,579	Arapahoe	Englewood 1	4,378
Denver	Denver County 1	69,693	El Paso	Lewis-Palmer 38	4,333
Arapahoe	Cherry Creek 5	41,052	Fremont	Canon City RE-1	4,233
Douglas	Douglas County RE 1	32,446	El Paso	Cheyenne Mountain	3,952
El Paso	Colorado Spings 11	31,586	Garfield	Garfield RE-2	3,481
Arapahoe	Adams-Arapahoe 28j	29,639	Montezuma	Montezuma-Cortez RE-1	3,474
Adams	Northglenn-Thornton 12	28,947	Teller	Woodland Park RE-2	3,262
Boulder	Boulder Valley RE 2	26,974	Morgan	Fort Morgan RE-3	3,222
Larimer	Poudre R-1	23,434	Logan	Valley RE-1	2,759
Mesa	Mesa County Valley 51	19,324	Elbert	Elizabeth C-1	2,664
Boulder	St Vrain Valley RE1J	18,750	Weld	Fort Lupton RE-8	2,642
Pueblo	Pueblo City 60	17,564	Moffat	Moffat County RE:NO1	2,631
El Paso	Academy 20	16,775	Summit	Summit RE-1	2,622
Arapahoe	Littleton 6	16,373	Weld	Windsor RE-4	2,479
Weld	Greeley 6	15,335	Alamosa	Alamosa RE-11J	2,401
Larimer	Thompson R-2J	14,186	Arapahoe	Sheridan 2	1,969
Adams	Westminster 50	11,439	Prowers	Lamar RE-2	1,953
El Paso	Harrison 2	10,449	Routt	Steamboat Springs RE-2	1,944
El Paso	Widefield 3	8,468	Weld	Gilcrest RE-1	1,937
Pueblo	Pueblo County Rural 70	6,845	Fremont	Florence RE-2	1,903
Adams	Adams County 14	6,073	Otero	East Otero R-1	1,749
El Paso	Falcon 49	5,457	Gunnison	Gunnison Watershed RE1J	1,725
Montrose	Montrose County RE-1J	5,344	Las Animas	Trinidad 1	1,664
Adams	Brighton 27J	5,308	Weld	Johnstown-Milliken RE-5J	1,618
Adams	Mapleton 1	5,208	Weld	Keenesburg RE-3(J)	1,601
El Paso	Fountain 8	4,926	Park	Platte Canyon 1	1,589
La Plata	Durango 9-R	4,850	Morgan	Brush RE-2J	1,566
Garfield	Roaring Fork RE-1	4,844	Archuleta	Archuleta County 50 JT	1,525
Delta	Delta County 50(J)	4,595	Rio Grande	Monte Vista C-8	1,414
Eagle	Eagle County RE 50	4,493	Clear Creek	Clear Creek RE-1	1,390

TABLE 4

RANKING OF COLORADO SCHOOL DISTRICTS BY 1999 FALL MEMBERSHIP

COUNTY	DISTRICT	MEMBERSHIP	COUNTY	DISTRICT	MEMBERSHIP
Weld	Eaton RE-2	1,383	Montezuma	Dolores RE-4A	656
Larimer	Park (Estes Park) R-3	1,366	Crowley	Crowley County RE-1-J	637
El Paso	Manitou Springs 14	1,363	Park	Park County RE-2	633
Lake	Lake County R-1	1,321	Morgan	Wiggins RE-50(J)	602
Grand	East Grand 2	1,285	Teller	Cripple Creek-Victor RE-1	596
Pitkin	Aspen 1	1,268	El Paso	Calhan RJ-1	593
Chaffee	Salida R-32	1,261	Routt	Hayden RE-1	553
Conejos	North Conejos RE-1J	1,168	Mesa	Plateau Valley 50	540
Weld	Platte Valley RE-7	1,094	San Miguel	Telluride R-1	530
Yuma	West Yuma County RJ-1	1,077	Grand	West Grand 1-JT	518
Otero	Rocky Ford R-2	1,063	Montezuma	Mancos RE-6	507
La Plata	Bayfield 10 JT-R	1,047	Montrose	West End RE-2	498
La Plata	Ignacio 11 JT	1,028	Arapahoe	Byers 32J	491
Chaffee	Buena Vista R-31	1,021	Washington	Akron R-1	460
Yuma	East Yuma County RJ-2	964	Routt	South Routt RE 3	457
Adams	Bennett 29J	958	Custer	Consolidated C-1	433
Kit Carson	Burlington RE-6J	900	Conejos	South Conejos RE-10	425
Weld	Ault-Highland RE-9	884	Gilpin	Gilpin County RE-1	420
El Paso	Ellicott 22	876	Rio Grande	Sargent RE-33J	414
Huerfano	Huerfano RE-1	822	Elbert	Kiowa C-2	396
Garfield	Garfield 16	791	Otero	Fowler R-4J	392
Rio Grande	Del Norte C-7	727	Conejos	Sanford 6J	384
Bent	Las Animas RE-1	716	Baca	Springfield RE-4	374
Rio Blanco	Rangely RE-4	713	Elbert	Big Sandy 100J	365
Rio Blanco	Meeker RE1	706	Fremont	Cotopaxi RE-3	362
Adams	Strasburg 31J	696	Prowers	Holly RE-3	362
Saguache	Center 26 JT	682	Sedgwick	Julesburg RE-1	359
El Paso	Peyton 23 JT	665	Otero	Swink 33	348
Lincoln	Limon RE-4J	663	Prowers	Wiley RE-13 JT	343
Phillips	Holyoke RE-1J	663	El Paso	Miami/Yoder 60JT	340

TABLE 4

RANKING OF COLORADO SCHOOL DISTRICTS BY 1999 FALL MEMBERSHIP

COUNTY	DISTRICT	MEMBERSHIP	COUNTY	DISTRICT	MEMBERSHIP
Dolores	Dolores County RE NO 2	339	Las Animas	Primero Reorganized 2	177
Las Animas	Hoehne Reorganized 3	337	Kit Carson	Bethune R-5	171
Alamosa	Sangre de Cristo RE-22J	328	Las Animas	Aguilar Reorganized 6	171
Costilla	Centennial R-1	328	Mesa	De Beque 49JT	169
Huerfano	La Veta RE-2	327	Logan	Plateau RE-5	167
San Miguel	Norwood R-2	316	Sedgwick	Platte Valley RE-3	156
Cheyenne	Cheyenne County RE-5	312	Mineral	Creede Consolidated 1	153
Prowers	Granada RE-1	312	Washington	Woodlin R-104	138
Ouray	Ridgway R-2	310	Weld	Briggsdale RE-10	138
Costilla	Sierra Grande R-30	309	Weld	Pawnee RE-12	133
Jackson	North Park R-1	309	Kit Carson	Hi-Plains R-23	125
Phillips	Haxtun RE-2J	295	Cheyenne	Kit Carson R-1	123
Lincoln	Genoa-Hugo C113	289	Weld	Prairie RE-11	121
Elbert	Elbert 200	284	Washington	Arickaree R-2	117
Logan	Buffalo RE-4	284	Elbert	Agate 300	100
Kit Carson	Stratton R-4	281	Washington	Lone Star 101	99
Kiowa	Eads RE-1	277	Baca	Vilas RE-5	93
Otero	Manzanola 3J	275	Baca	Pritchett RE-3	91
Bent	McClave RE-2	256	Baca	Campo RE-6	91
Ouray	Ouray R-1	256	Lincoln	Karval RE-23	86
Kit Carson	Arriba-Flagler C-20	254	San Juan	Silverton 1	84
Baca	Walsh RE-1	249	El Paso	Edison 54 JT	82
Otero	Ceraw 31	229	Las Animas	Kim Reorganized 88	78
Logan	Frenchman RE-3	219	Kiowa	Plainview RE-2	76
Saguache	Moffat 2	217	Hinsdale	Hinsdale County RE 1	70
Washington	Otis R-3	211	Las Animas	Branson Reorganized 82	48
El Paso	Hanover 28	209			
Arapahoe	Deer Trail 26J	204	BOCES	BOCES	673
Saguache	Mountain Valley RE 1	188			
Morgan	Weldon Valley RE-20(J)	180		TOTAL	708,109

TABLE 5

STATE TRENDS IN CHARTER SCHOOL MEMBERSHIP
FALL 1995 THROUGH FALL 1999

COUNTY, DISTRICT AND SCHOOL NAME	FALL1995	FALL1996	FALL1997	FALL1998	FALL1999	NUMBER CHANGE FROM 1998	PERCENT CHANGE FROM 1998
ADAMS COUNTY							
NORTHGLENN-THORNTON 12							
ACADEMY OF CHARTER SCHOOLS	505	783	763	784	845		
PINNACLE CHARTER SCHOOL			498	619	635		
STARGATE CHARTER SCHOOL	175	200	226	241	241		
DISTRICT TOTAL	680	983	1487	1644	1721	77	4.7%
BRIGHTON 27J							
BRIGHTON CHARTER SCHOOL				307	353		
DISTRICT TOTAL				307	353	46	15.0%
BENNETT 29J							
PRAIRIE CREEKS CHARTER SCHOOL				8	CLOSED		
DISTRICT TOTAL				8		-8	-100.0%
STRASBURG 31J							
PRAIRIE CREEKS CHARTER SCHOOL					23		
DISTRICT TOTAL					23	23	2300.0%
WESTMINSTER 50							
CROWN POINTE CHARTER ACADEMY			150	176	200		
DISTRICT TOTAL			150	176	200	24	13.6%
ARAPAHOE COUNTY							
CHERRY CREEK 5							
CHERRY CREEK CHARTER ACADEMY	342	391	440	449	443		
DISTRICT TOTAL	342	391	440	449	443	-6	-1.3%
LITTLETON 6							
LITTLETON CHARTER ACADEMY		449	450	452	451		
LITTLETON PREP CHARTER SCHOOL				344	444		
DISTRICT TOTAL		449	450	796	895	99	12.4%
BOULDER COUNTY							
ST. VRAIN VALLEY RE 1J							
TWIN PEAKS CHARTER ACADEMY			377	479	477		
DISTRICT TOTAL			377	479	477	-2	-0.4%

NOTE: CHARTER SCHOOL MEMBERSHIP IS INCLUDED IN SCHOOL DISTRICT MEMBERSHIP FIGURES IN OTHER TABLES OF THIS PUBLICATION.

TABLE 5

STATE TRENDS IN CHARTER SCHOOL MEMBERSHIP
FALL 1995 THROUGH FALL 1999

COUNTY, DISTRICT AND SCHOOL NAME	FALL1995	FALL1996	FALL1997	FALL1998	FALL1999	NUMBER CHANGE FROM 1998	PERCENT CHANGE FROM 1998
BOULDER VALLEY RE 2							
BOULDER PREP CHARTER HIGH SCHOOL				34	41		
HORIZONS K-8 ALTERNATIVE CHARTER SCHOOL			284	307	297		
SOJOURNER CHARTER SCHOOL					35		
SUMMIT MIDDLE CHARTER SCHOOL		251	270	254	253		
DISTRICT TOTAL		251	554	595	626	31	5.2%
DENVER COUNTY							
DENVER COUNTY 1							
CLAYTON CHARTER SCHOOL	105	100	CLOSED				
ODYSSEY CHARTER ELEMENTARY SCHOOL				48	167		
PIONEER CHARTER SCHOOL			325	311	309		
P.S. 1 CHARTER SCHOOL	62	128	162	233	238		
WYATT-EDISON CHARTER ELEMENTARY SCHOOL				629	655		
DISTRICT TOTAL	167	228	487	1221	1369	148	12.1%
DOUGLAS COUNTY							
DOUGLAS COUNTY RE 1							
ACADEMY CHARTER SCHOOL	315	333	353	348	445		
COLORADO VISIONARY CHARTER ACADEMY			161	275	206		
CORE KNOWLEDGE CHARTER SCHOOL	210	244	270	294	320		
DCS MONTESSORI CHARTER SCHOOL			147	207	210		
PLATTE RIVER CHARTER ACADEMY			280	359	384		
RENAISSANCE CHARTER SCHOOL	230	289	255	286	297		
DISTRICT TOTAL	755	866	1466	1769	1862	93	5.3%
EAGLE COUNTY							
EAGLE COUNTY RE 50							
EAGLE COUNTY CHARTER ACADEMY	128	122	162	166	128		
DISTRICT TOTAL	128	122	162	166	128	-38	-22.9%
EL PASO COUNTY							
HARRISON 2					27		
TUTMOSE ACADEMY CHARTER SCHOOL					27	27	2700.0%
DISTRICT TOTAL							

NOTE: CHARTER SCHOOL MEMBERSHIP IS INCLUDED IN SCHOOL DISTRICT MEMBERSHIP FIGURES IN OTHER TABLES OF THIS PUBLICATION.

TABLE 5

STATE TRENDS IN CHARTER SCHOOL MEMBERSHIP
FALL 1995 THROUGH FALL 1999

COUNTY, DISTRICT AND SCHOOL NAME	FALL1995	FALL1996	FALL1997	FALL1998	FALL1999	NUMBER CHANGE FROM 1998	PERCENT CHANGE FROM 1998
COLORADO SPRINGS 11							
CIVA CHARTER SCHOOL			129	107	99		
COMMUNITY PREP CHARTER SCHOOL	134	117	122	126	145		
EMERSON-EDISON JR CHARTER ACADEMY					791		
GLOBE CHARTER SCHOOL	90	111	136	140	145		
ROOSEVELT EDISON CHARTER SCHOOL		657	821	985	703		
DISTRICT TOTAL	224	885	1208	1358	1883	525	38.7%
CHEYENNE MOUNTAIN 12							
CHEYENNE MOUNTAIN CHARTER ACADEMY	271	297	291	319	303		
DISTRICT TOTAL	271	297	291	319	303	-16	-5.0%
ACADEMY 20							
THE CLASSICAL CHARTER ACADEMY			403	460	621		
DISTRICT TOTAL			403	460	621	161	35.0%
LEWIS-PALMER 38							
LEWIS-PALMER CHARTER ACADEMY		195	268	272	334		
DISTRICT TOTAL		195	268	272	334	62	22.8%
ELBERT COUNTY							
ELIZABETH C-1							
ELBERT COUNTY CHARTER SCHOOL			144	156	216		
DISTRICT TOTAL			144	156	216	60	38.5%
FREMONT COUNTY							
CANON CITY RE-1							
MT VIEW CORE KNOWLEDGE CHARTER SCHOOL		120	149	177	202		
DISTRICT TOTAL		120	149	177	202	25	14.1%
GARFIELD COUNTY							
ROARING FORK RE-1							
ASPEN/CARBONDALE COMM CHARTER SCHOOL	113	148	147	190	213		
DISTRICT TOTAL	113	148	147	190	213	23	12.1%

NOTE: CHARTER SCHOOL MEMBERSHIP IS INCLUDED IN SCHOOL DISTRICT MEMBERSHIP FIGURES IN OTHER TABLES OF THIS PUBLICATION.

TABLE 5

STATE TRENDS IN CHARTER SCHOOL MEMBERSHIP
FALL 1995 THROUGH FALL 1999

COUNTY, DISTRICT AND SCHOOL NAME	FALL1995	FALL1996	FALL1997	FALL1998	FALL1999	NUMBER CHANGE FROM 1998	PERCENT CHANGE FROM 1998
GUNNISON COUNTY							
GUNNISON WATERSHED RE1J							
CRESTED BUTTE COMMUNITY SCHOOL					340		
MARBLE CHARTER SCHOOL	21	23	19	17	17		
DISTRICT TOTAL	21	23	19	17	357	340	2000.0%
JEFFERSON COUNTY							
JEFFERSON COUNTY R-1							
COLLEGIATE CHARTER ACADEMY (formerly SCI-TECH)	99	136	137	171	550		
COMMUNITY INVOLVED CHARTER SCHOOL	375	328	259	264	245		
COMPASS MONTESSORI CHARTER SCHOOL				132	172		
EXCEL ACADEMY CHARTER SCHOOL	126	128	138	110	126		
JEFFERSON ACADEMY CHARTER SCHOOL	227	281	280	306	337		
JEFFERSON CHARTER ACADEMY JR/SR HIGH			56	114	212		
LINCOLN CHARTER ACADEMY			119	209	245		
MAGNET CHARTER SCHOOL OF DEAF			13	16	27		
MONTESORRI PEAKS CHARTER ACADEMY			65	188	229		
DISTRICT TOTAL	827	873	1067	1510	2143	633	41.9%
LA PLATA COUNTY							
DURANGO 9-R							
COMMUNITY OF LEARNERS CHARTER SCHOOL	60	111	128	140	123		
THE EXCEL CHARTER SCHOOL	165	133	123	103	109		
DISTRICT TOTAL	225	244	251	243	232	-11	-4.5%
LARIMER COUNTY							
POUDRE R-1							
LIBERTY COMMONS CHARTER SCHOOL			401	440	502		
DISTRICT TOTAL			401	440	502	62	14.1%
MONTEZUMA COUNTY							
MONTEZUMA-CORTEZ RE-1							
BATTLE ROCK CHARTER SCHOOL	24	25	26	24	26		
SOUTHWEST OPEN CHARTER SCHOOL					156		
DISTRICT TOTAL	24	25	26	24	182	158	658.3%

NOTE: CHARTER SCHOOL MEMBERSHIP IS INCLUDED IN SCHOOL DISTRICT MEMBERSHIP FIGURES IN OTHER TABLES OF THIS PUBLICATION.

TABLE 5

STATE TRENDS IN CHARTER SCHOOL MEMBERSHIP
FALL 1995 THROUGH FALL 1999

COUNTY, DISTRICT AND SCHOOL NAME	FALL1995	FALL1996	FALL1997	FALL1998	FALL1999	NUMBER CHANGE FROM 1998	PERCENT CHANGE FROM 1998
MONTROSE COUNTY							
MONTROSE COUNTY RE-1J							
PASSAGE CHARTER SCHOOL				22	23		
DISTRICT TOTAL				22	23	1	4.5%
WEST END RE-2							
PARADOX VALLEY CHARTER SCHOOL					19		
WEST END LEARNING CENTER					21		
DISTRICT TOTAL					40	40	400.0%
PARK COUNTY							
PARK COUNTY RE-2							
LAKE GEORGE/GUFFEY CHARTER SCHOOL		166	193	165 (SPLIT INTO 2 SCHOOLS)			
GUFFEY CHARTER SCHOOL					24		
LAKE GEORGE CHARTER SCHOOL					107		
DISTRICT TOTAL		166	193	165	131	-34	-20.6%
PROWERS COUNTY							
LAMAR RE-2							
ALTA VISTA CHARTER ELEMENTARY SCHOOL				73	80		
DISTRICT TOTAL				73	80	7	9.6%
PUEBLO COUNTY							
PUEBLO CITY 60							
PUEBLO CHARTER SCHOOL-ARTS & SCIENCES	357	399	422	361	371		
YOUTH & FAMILY CHARTER ACADEMY			98	87	118		
DISTRICT TOTAL	357	399	520	448	489	41	9.2%
PUEBLO COUNTY RURAL 70							
THE CONNECT CHARTER SCHOOL	111	122	132	138	139		
SWALLOWS CHARTER ACADEMY		61	59	125	177		
DISTRICT TOTAL	111	183	191	263	316	53	20.2%
SAGUACHE COUNTY							
MOFFAT 2							
CRESTONE CHARTER SCHOOL	36	38	47	48	59		
DISTRICT TOTAL	36	38	47	48	59	11	22.9%

NOTE: CHARTER SCHOOL MEMBERSHIP IS INCLUDED IN SCHOOL DISTRICT MEMBERSHIP FIGURES IN OTHER TABLES OF THIS PUBLICATION.

TABLE 5

STATE TRENDS IN CHARTER SCHOOL MEMBERSHIP
FALL 1995 THROUGH FALL 1999

COUNTY, DISTRICT AND SCHOOL NAME	FALL1995	FALL1996	FALL1997	FALL1998	FALL1999	NUMBER CHANGE FROM 1998	PERCENT CHANGE FROM 1998
SUMMIT COUNTY							
SUMMIT RE-1							
ALPINE CHARTER SCHOOL		55	46	42	34		
DISTRICT TOTAL		55	46	42	34	-8	-19.0%
WELD COUNTY							
GREELEY 6							
COLORADO CHARTER HIGH SCHOOL OF GREELEY				100	101		
FRONTIER CHARTER ACADEMY (formerly Core Knowledge)			274	366	452		
UNC LABORATORY CHARTER SCHOOL					604		
UNION COLONY CHARTER SCHOOL			160	192	181		
DISTRICT TOTAL			434	658	1338	680	103.3%
TOTAL CHARTER SCHOOL MEMBERSHIP	4,281	6,941	11,378	14,495	17,822	3,327	23.0%

NOTE: CHARTER SCHOOL MEMBERSHIP IS INCLUDED IN SCHOOL DISTRICT MEMBERSHIP FIGURES IN OTHER TABLES OF THIS PUBLICATION.

DEFINITIONS OF SELECTED TERMS

The following terms are defined as they apply in the text.

CLASSROOM TEACHER: A staff member assigned the professional activities of instructing pupils in self-contained classes or courses. This term includes all teachers.

DROPOUT: A dropout is a person who leaves school for any reason except death before completion of a high school diploma or its equivalent and who does not transfer to another public or private school or enroll in an approved home study program.

DROPOUT RATE: The dropout rate used in Table 1 represents the percentage of students in grades 7 through 12 who dropped out during the period July 1998 through June 1999. In accordance with a 1993 legislative mandate, beginning with the 1994-95 school year, the dropout rate calculation excludes expelled students. Additional information on dropout and graduation rates is available in a separate publication titled Colorado Graduation Rates for Class of 1999 and 1998-99 Annual Dropout Rates for Grades 7-12. For a copy of this report contact the Research and Evaluation Unit, 303/866-6821.

ETHNIC/RACIAL GROUP: Ethnic/racial designations used in this report do not denote scientific definitions of anthropological origins. For the purpose of this report, a student may be included in the group to which he or she appears to belong, identifies with, or is regarded in the community as belonging. However, no person should be counted in more than one ethnic/racial group. This information is required for state and federal reporting.

American Indian or Alaskan Native - A person having origins in any of the original peoples of North America.

Asian or Pacific Islander - A person having origins in any of the original peoples of the Far East, Southeast Asia, or the Pacific Islands. This area includes, for example, China, Japan, Korea, the Philippine Islands and Samoa.

Black, Not of Hispanic Origin - A person having origins in any of the black racial groups.

White, Not of Hispanic Origin - A person having origins in any of the original peoples of Europe, North Africa, the Middle East, or the Indian subcontinent.

Hispanic - A person of Mexican, Puerto Rican, Cuban, Central or South American, or the Spanish culture or origin, regardless of race.

GRADUATION RATE: The graduation rate is a cumulative or longitudinal rate which calculates the number of students who actually graduate as a percentage of those who were in membership. The graduation rate for the Class of 1998 is based on a four-year rate, grades 9-12 beginning with the baseline year of data in 1995. Graduation rates are calculated based on high school graduates only. A graduate is a student who completes locally-defined requirements for graduation. If a student is not considered a graduate by the local board of education, then he/she is not included in the graduation rate calculation. (Also see completer rate.)

PUBLIC SCHOOL PUPIL MEMBERSHIP: The pupil count reported in membership in Colorado's public schools as of the Fall 1998 October One Day Count.

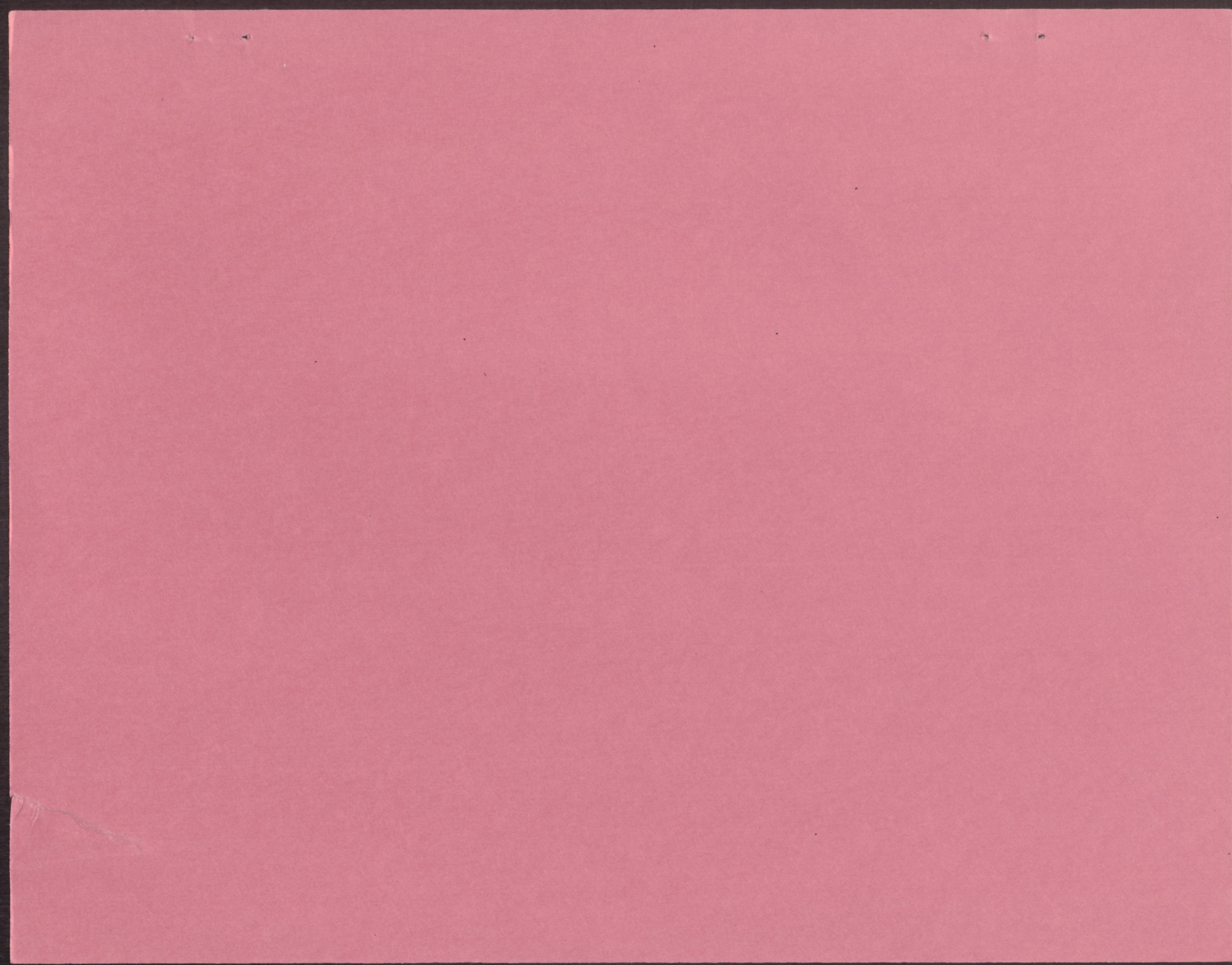
PUPIL/TEACHER RATIO: The number of students in membership in public schools divided by the full-time equivalency of classroom teaching assignments serving these students as of fall 1998.

DATA SOURCES

CERTIFICATED PERSONNEL: Data on certificated personnel is submitted electronically to the Department of Education utilizing the Automated Data Exchange Project. (Research and Evaluation Unit)

PUBLIC SCHOOL PUPIL MEMBERSHIP: CDE-4 Form, Fall Report from School Districts, Section G - Student Membership by School, Grade, Sex, and Ethnic/Racial Group - October One Day Count. (Research and Evaluation Unit)

DROPOUT RATE, GRADUATION RATE AND GRADUATES: CDE-2 Form, Part II - End of Year Pupil Membership and Dropout Data Collection, Part III and IV - Spring and Summer High School Graduates and Other Completers, and Part V - Membership Base Adjustment for Graduation Rate Process. (Research and Evaluation Unit)



RECEIVED

JUL 25 2000

STATE PUBLICATIONS
Colorado State Library