


ED 2.69/1958  
c.1

COLORADO STATE PUBLICATIONS LIBRARY local  
ED2.69  
/Annual report on school district organi  
  
3 1799 00033 9895

FIRST ANNUAL REPORT



ON

SCHOOL  
DISTRICT  
ORGANIZATION

COLORADO STATE DEPARTMENT OF EDUCATION

January  
1958

H. Grant Vest, Commissioner

COLORADO  
STATE BOARD  
OF  
EDUCATION

Anna C. Petteys, Chairman  
Brush

Allegra Saunders, Vice-chairman  
Denver

William W. Gaunt  
Brighton

Alva B. Adams  
Pueblo

Stuart W. McLaughlin  
Rangely

FIRST ANNUAL REPORT

ON

SCHOOL DISTRICT ORGANIZATION

House of Representatives  
and members of the Colorado General Assembly  
State Capitol Building  
Denver 2, Colorado

Dear Governor, Members and Legislators:

The School District Organization Act of 1957, Chapter 237,  
Session Laws, 1957, invests several duties within the office of the  
State Commissioner of Education.

Prepared By

Stanley A. Leftwich  
Special Assistant to the Commissioner  
Director, Division of School District Organization

the several counties on or before January 1, 1958, and also  
January 1 thereafter."

In fulfillment of this duty as the Commissioner of Education,  
I herewith submit the first annual report on progress in school  
district reorganization.

Respectfully submitted,  
  
Stanley A. Leftwich

COLORADO STATE DEPARTMENT OF EDUCATION  
Division of School District Organization

January  
1958

LETTER OF TRANSMITTAL

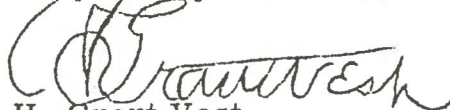
Honorable Stephen L. R. McNichols, Governor  
and Members of the Colorado General Assembly  
State Capitol Building  
Denver 2, Colorado

Dear Governor McNichols and Legislators:

The School District Organization Act of 1957, Chapter 237, Session Laws, 1957, invests several duties within the office of the State Commissioner of Education. Among these duties, Section 10 (3) specifically enjoins the commissioner and his special assistant "To publish an annual report of progress of organization plans in the several counties on or before January 1, 1958, and each January 1 thereafter."

In fulfillment of this duty as the Commissioner of Education, I herewith submit the first annual report on progress in school district reorganization.

Respectfully submitted,



H. Grant Vest  
Commissioner of Education

PREFACE

The School District Organization Act of 1977 was removed by the Colorado General Assembly on April 1 and was signed into law by the Governor and became effective May 1, 1977. The commission immediately notified, in writing, each County Superintendent of Schools of the provisions of the act and requested the election of committees as provided in the act in the following counties: Adams, Alamosa, Arapahoe, Baca, Bent, Boulder, Chaffee, Cheyenne, Clear Creek, Conejos, Costilla, Crowley, Custer, Douglas, Eagle, El Paso, Fremont, Garfield, Gilpin, Grand, Gunnison, Hinsdale, Huerfano, Jackson, Kiowa, Kit Carson, Lake, La Plata, Larimer, Las Animas, Lincoln, Logan, Moffat, Montezuma, Morgan, Otero, Park, Phillips, Pitkin, Prowers, Rio Grande, Routt, San Miguel, Saguache, Sedgewick, Summit, Teller, Washington, Weld, and Yuma.

Three counties were not requested to form school planning committees by virtue of the fact that they had already formed such committees embracing the entire county or city and county (Boulder, Larimer, and Weld). These counties are: Boulder, Larimer and Weld.

TABLE OF CONTENTS

Several counties had completed within their own boundaries a plan of organization under the provisions of the act, but certain revised provisions of the act required the commissioner on consideration of the standards set forth in Section of Chapter 227, Section 227-101, to request the following counties to form school planning committees: Adams, Alamosa, Arapahoe, Baca, Bent, Boulder, Chaffee, Cheyenne, Clear Creek, Conejos, Costilla, Crowley, Custer, Douglas, Eagle, El Paso, Fremont, Garfield, Gilpin, Grand, Gunnison, Hinsdale, Huerfano, Jackson, Kiowa, Kit Carson, Lake, La Plata, Larimer, Las Animas, Lincoln, Logan, Moffat, Montezuma, Morgan, Otero, Park, Phillips, Pitkin, Prowers, Rio Grande, Routt, San Miguel, Saguache, Sedgewick, Summit, Teller, Washington, Weld, and Yuma.

	Page
Letter of Transmittal . . . . .	ii
Preface . . . . .	iv
Section I, General Summary . . . . .	1
Section II, Progress of County Committees . . . . .	13
Section III, Appendices . . . . .	47

## P R E F A C E

The School District Organization Act of 1957 was approved by the Colorado General Assembly on April 1 and was signed into law by the Governor and became effective May 1, 1957. The commissioner immediately notified, in writing, each County Superintendent of Schools of the provisions of the act and requested the election of committees as provided in the act in the following counties: Adams, Alamosa, Arapahoe, Baca, Bent, Boulder, Chaffee, Cheyenne, Clear Creek, Conejos, Costilla, Crowley, Dolores, Douglas, Eagle, Elbert, El Paso, Fremont, Garfield, Gilpin, Grand, Gunnison, Hinsdale, Huerfano, Jackson, Kiowa, Kit Carson, Lake, La Plata, Larimer, Las Animas, Lincoln, Logan, Moffat, Montezuma, Montrose, Morgan, Otero, Park, Phillips, Pitkin, Prowers, Rio Blanco, Routt, San Miguel, Saguache, Sedgwick, Summit, Teller, Washington, Weld, and Yuma.

Three counties were not requested to form school planning committees by virtue of the fact that they have only one school district embracing the entire county or city and county (Sec. 4(1)). These counties are: Denver, Mineral and San Juan.

Several counties had completed within their own boundaries a plan of organization under Article 8, Chapter 123, Colorado Revised Statutes, 1953, satisfactory to the commissioner on consideration of the standards set forth in Section 11 of Chapter 237, Session Laws, 1957. However, a study of their present organization indicates that each of them has a portion of its territory joint with one or more neighboring counties which have not completed reorganization. Inasmuch as the successful development of the plan or plans of the neighboring county or counties is contingent upon approval of such plan or plans by the committees of all counties involved, it became evident that these reorganized counties would need committees established, at least on a stand-by basis, until the unreorganized counties have developed their plans for approval. The following completely reorganized counties were therefore requested to establish such "stand-by committees": Archuleta, Custer, Mesa, Ouray, Pueblo and Rio Grande.

Two other counties were completely reorganized under Article 8, Chapter 123, Colorado Revised Statutes, 1953. These counties had no joint district situations and therefore, were not requested to form school planning committees. These counties are Delta and Jefferson.

All counties requested by the commissioner to form school planning committees did so within the time limit set by the law. The report of their progress to date is recorded by individual counties and forms Part II of this report.

Section I

GENERAL SUMMARY

This report is designed to give you a brief, concise picture of progress towards the solution of our enormously vital and important problem of school district reorganization. It is hoped the report will help all those who want better schools to see more clearly the dimensions of our common task.

In accord with Section 9 (1) of "The School District Organization Act of 1957", State Commissioner of Education H. Grant Vest, requested Stanley A. Leftwich, Director of the Division of School District Organization of the Colorado State Department of Education, to act as special assistant to the commissioner to carry out the duties devolving upon the Department under the law. As the magnitude of the duties of the Commissioner and his special assistant has increased, it has become necessary to employ additional consultants and clerical help.

The new organization law froze all districts into the existing pattern to provide that an overall view be asserted in the development of any new proposals.

As of May 1, 1957, there existed the following classifications and number of school districts:

Districts of the First Class . . . . .	55
Districts of the Second Class . . . . .	82
Districts of the Third Class . . . . .	764
County High School Districts . . . . .	21
Union High School Districts . . . . .	19
Junior College Districts . . . . .	6
Total Number of School Districts . . . . .	<u>947</u>

Of this total number of school districts, 238 or 25.13%, were non-operating; i.e., these districts were not operating a school within their own boundaries.

A complete tabulation of classifications and numbers of districts as of May 1, 1957, compared with the classifications and numbers of school districts as of July 1, 1956, appears on pages 64 and 65 of this report.

The county superintendents were notified of the provisions of the law on May 3, 1957. Appropriate informative materials were also provided for all county superintendents and committee members. Copies of the materials are included on pages 55 through 62.

Committees began immediately to request assistance of the Director of the Department's Division of District Organization Services for advice and help. At the date of this report all of the committees actively engaged in this project except one, Prowers, have been visited at least once. A list of the counties, and the dates on which staff members from the State Department of Education met with the county committees, is tabulated on page 49.

## THE STUDY APPROACH

The main emphasis of the State Department of Education has been to suggest ways and means of attacking the problem. Committees have been encouraged to carry out the provisions of Sec. 4(8)(a) of the law which reads in part: "The Committee shall have and perform the following duties: The making of a careful study of the school system in its county; ..." The basic necessity of a study approach has been emphasized. The Department has acted on the premise that "reasonable people informed by the best facts obtainable, will reach reasonable decisions."

Committees have been encouraged to gather data comprehensively to include pertinent information about the enrollment of pupils; their location in the county, kind of educational program needed; financial data, etc. Data forms have also been furnished the committees suggesting convenient methods of tabulating pertinent information about the school districts and their operation.

Committees have been encouraged to get help from county superintendents, from school officials in the various school districts in each county; from colleges and universities, and other sources as well as the State Department of Education. One of the limiting problems in this entire project is the lack of funds available to committees with which to employ special help. State allocations merely take care of travel and subsistence expenses of committees, and election expenses. Districts have been reluctant to devote their own personnel or financial services to provide special help for this project.

As a part of committee procedure, it has been pointed out that ample time should be taken after getting the facts to deliberate on their meaning and to make an application to organization plans. Committees have to study location of possible school attendance centers in the proposed new school districts. It is understood, of course, that a Planning Committee can only make recommendations on this point. The ultimate decisions on the location of schools are the responsibility of the duly elected board of education. Recommendations on these points, however, may serve to clear the way for better thinking on the problem of establishing boundary lines for the proposed new district or districts. In any event, the importance of applying the factual data via ample deliberation and discussion is an important part of the study process.

It has been suggested that the committees evaluate several alternatives proposed for new district boundary lines. Re-districting proposals can be tested in the light of "Conditions for Consideration in Development of Organization Plan" as contained in Section 11 of the law, and also in the light of the following Guides to School District Organization developed by the State Board of Education:

### GUIDES PREPARED BY STATE BOARD OF EDUCATION

Acting on the premise that district organization is solely for the purpose of facilitating an educational program that meets the needs of our times with the wisest use possible of the taxpayers dollars, the Board adopted a suggested list of guides as follows:

..that unified school districts i.e., districts including all grades, kindergarten through grade twelve, under one board of education offer the most nearly ideal plan for school district organization. The ultimate goal is that the entire state shall be organized into such unified school districts.



...that the State Board of Education is obligated to encourage school district organization throughout the state.

....that to assure an effective, comprehensive public educational opportunity for each and every child, youth and adult of Colorado, this educational program must be, in-so-far as possible, of equal quality.

In the opinion of the State Board, such an educational program must be inclusive in scope and planned especially to meet basic educational needs in such areas as language, arts, mathematics, social studies, science, home and family living, fine arts, health and physical education. The Board believes that this program should also provide for special needs through other programs as: business education, agriculture, home economics, distributive education and trades and industries.

...attention should be given to natural barriers and community areas plus the adequacy of human and economic resources.

The human and economic resources of a school district should be sufficient for operating the necessary schools within the administrative unit so as to meet, or preferably exceed, the minimums for effective public education. The varied conditions of population sparsity in Colorado make the establishment of optimum or minimum school enrollment standards difficult.

...that the district Board of Education should be representative of all geographic and population segments of the school district or administrative area and district planning should assure this as far as possible.

Plans for district organization can be prepared and effected only through a careful and comprehensive analysis and study of areas to be included and served by each proposed school district.

These standards and/or criteria are flexible and can be adapted to sparsely settled and congested areas alike. The qualities of an administrative and/or attendance area include such factors as:

1. Size of school district
2. Size of elementary, junior and senior high school
3. Scope of educational services
4. Sociological conditions (Community life and environment)
5. Economic and financial resources
6. Human resources

Certain services are essential to a quality educational program in each community and school districts should be organized to make such services available. Although each educational service requires special abilities and understandings, it is possible that members with sufficient interest and professional qualifications may be responsible for more than one service. Through this arrangement, educational services may be expanded without increasing the staff or personnel. The desired services include the following:

1. Competent supervision of all aspects of the school program.
2. Effective personnel management in the selection, employment assignment, welfare, and in-service development of all school district employees.

3. Professional direction of school studies and revision of the curriculum to meet changing educational needs and to provide for the continuous improvement of instruction.
4. Able administration of the finances and business affairs of the district.
5. School health and safety services including medical and dental inspection, immunization, prevention and control of infectious and contagious diseases, accident prevention and sanitation.
6. Attention to and appropriate education for the physically and mentally handicapped to develop their maximum potential resources and abilities to make their optimum or best adjustments in life.
7. Services regarded as essential for the support of the instructional program such as: transportation services and school lunch accommodations.
8. Pupil personnel services including: personal, social, educational and vocational guidance, and the professional leadership and counsel of attendance officers, social workers, psychologists, psychiatrists and others.
9. Each organized school district should provide instructional leadership for community education programs. These include programs of education for out-of-school youth and adults commonly referred to as adult education and recreational progress for children, youth and adults.

Attention should be given to such matters as pre-school programs, adult educational programs and community junior colleges.

#### PROGRESS TO DATE

It is too early at this point to note any clear-cut trends or to report any definite conclusions. At best it is possible only to provide a narrative description of the kind of activities that are going on. Legislators should recognize that this program has been in operation only seven months and that the process of selecting committees and getting organized extended well into July and August. The total project is in the very first stage of operation.

But certainly it is interesting to note that several counties are currently holding hearings on "tentative" proposals. Summit County and Grand County have presented plans for the commissioner's review and approval. Elections for these programs were scheduled for January, 1958. Other programs seem to be shaping up as follows:

<u>County</u>	<u>No. of Districts as of May 1, 1957</u>	<u>Proposed No. of Districts</u>	<u>Possible Reduction in No. of Districts</u>
Summit	10	1	9
Grand	13	2	11
Huerfano	26	2	24
Las Animas	44	6	38
Costilla	12	2	10
Conejos	18	1	17
	123	14	109

In the reports of the individual counties it is obvious several others are reaching a stage in their deliberations where they will be ready to hold hearings on "tentative" plans early in 1958. If new districts are to be formed and in operation by the Fall of 1958, it is obvious that a heavy push in submitting plans and holding elections will need to be experienced during the Spring and early Summer months.

Each Committee was asked to provide for the Legislature basic information about its operation. A narrative summary of these reports is to be found in Part II of this brochure. For summary purposes, we have endeavored to analyze these reports in a few brief paragraphs as follows:

1. When Were the Committees Organized?

The reports of organization show that the committees were selected from the middle of May to early in July. All but a few of the committees had elected their chairmen by August. Practically all of them started their work by September.

2. Do the Committees Meet Regularly?

Practically all committees have established regular meeting dates. A monthly meeting is most common, but some committees meet once each six weeks, and some are now meeting weekly, setting target dates of February or March for development of plans. Harvest season, hunting season, and other events interrupted the regular meetings of some committees.

3. Comments on Committee Meetings.

Typical comments about Committee activities are as follows:

"Our committee is just beginning to work."

"The committee meets irregularly now because we are making maps."

"The meetings are well attended."

"It took two meetings to get started."

"The first problem was for the committee to determine the need for reorganization."

"Attendance, interest, and morale are excellent."

"No meeting in August due to hay."

"We now have a very active committee. Work was halted, by change of the county superintendent, for a time."

4. What Procedures Are Used by the Committees?

Practically all committees have started their work by developing county maps showing the location of the schools, residences of the children in the sparsely settled areas, roads, and natural barriers to transportation. Data sheets are being prepared, showing for each school district pertinent factual data. Some of the committees have visited every school within their counties. Others have scheduled meetings with all of the school boards within their counties to discuss school problems.

5. What Are the Findings of the Committees?

It is too early for most of the committees to have prepared summaries of findings. Comments from the committees indicate they are familiarizing themselves with the problems:

"Wetmore has to decide whether to go to Fremont County or to come to Custer County."

"There is much to be desired in our organizational plan in existing school districts."

"Study findings will be submitted for approval and action."

"Too much difference of opinion ranging from fear of taxes of community groups or in some cases loss of prestige."

"Very wide range of opinion in the county."

"The buildings are outdated, seats in poor condition, heating inadequate, toilet facilities very poor, and drinking water unsafe. These conditions exist in about half of the districts. The condition of the balance is satisfactory."

6. What Plans for Redistricting Are the Committees Discussing?

A few comments are listed to indicate the types of plans being considered:

"Two districts, east and west end of county."

"Formation of a single county district."

"Committee discussed one, two, three districts for the county. All one-room and two-room schools to be closed and pupils transported to larger centers wherever possible. No definite plan crystallized yet."

"Combining six districts plus county high school into one district."

"Using the four existing 12-grade centers as new districts (in place of the thirty we now have); changing to one district (county unit); having just three districts by uniting two of the 12-grade centers."

"Change to six, three, or one district."

"Two districts in county; one district in county; more than two districts in county."

These comments seem to indicate that the committees are considering

rather major changes. It is significant that early in their experience they are examining the possibilities for a much reduced number of districts in almost every county. The State Department of Education is attempting to point out that the real test of the program is not so much how many school districts are eliminated, but how many new districts able to sustain an adequate educational program are created.

#### 7. What Difficulties Are the Committees Experiencing?

- "Fear that if attendance centers not pointed up that a county board could shift children about."
- "Public acceptance doubtful."
- "Distance, weather, and illness."
- "Too many small districts want to stay as they are."
- "Lethargy of people. Public meetings are poorly attended."
- "District board members feel that community would be destroyed."
- "Some districts well off financially, some poor."
- "Some districts transport into Wyoming. No provisions for out-of-state transportation."
- "Some transported to the best school but it is in another county."
- "Two districts have bonded debt."
- "Setting up of director districts."
- "What is a logical boundary? Economic centers, population, growth, area, etc."
- "Apathy of people"
- "Some resentment from previous consolidation."
- "Sparse population."
- "Lack of good roads, valuation, distribution, declining population, and high school districts."
- "Confusion of terms. Organization meant consolidation."
- "Lack of understanding of people in rural areas as to need for proposed redistricting."
- "Division of districts in the director districts of approximately equal population."
- "Apparently more interest in taxes than benefits of schools."

It is, thus far, the observation of the staff members of the State Department of Education that these problems tend to merge into better perspective as the committee develops adequate plans. Complaints of "apathy" and "lethargy" on the part of the people tend to come from those committees which started their work without an adequate study and without anything specific to tell the people in the way of proposals. Some moved ahead to hold public meetings in various areas merely to ascertain local feeling without gathering facts or knowing the problem. The effort of the State Department of Education has been to translate the role of the committees from "followership" to "leadership".

#### 8. What Legislative Remedies Are Suggested for Committee Problems?

The opinion of the State Department of Education is that it is too early to recommend any specific legislative changes. None of the problems disclosed by the committees need to obstruct the progress of any plan, if the committees generate adequate statesmanship and leadership. However, some comments appear with sufficient frequency to indicate the advisability of further study of the issues. The

following comments will point to these issues:

"Need a law that will permit all territory in a reorganized district to assume bonded debt of the area."

"Remedy bonded indebtedness law. It is only fair that the new district assume the debt if it is incurred now or is incurred later."

"Interstate transportation policy for children so that they may attend a standard school."

"Vote allowed on specific ownership property."

"Elimination of annexation provisions of Section 39. Many of the problems will solve themselves through dissolution and annexation if that process is restored."

9. What Is the Experience in Cooperation With Committees of Neighboring Counties?

For the most part the committees seem willing to explore joint district possibilities in the light of the convenience and welfare of the children. A few counties seem to have adopted a policy which would ignore any joint district proposals. These areas are usually counties having county high school districts at present, and seem to devote undue importance to retaining assessed valuation within their own boundaries. No serious controversies have developed over this problem, but the State Department of Education is available to serve as intermediary in the event difficulties should arise. Future reports should cast more light on this phase of the operation. The Grand and Summit plans contain an example of good operation of this provision.

10. Adequacy of Appropriation for Committee Expenses

It now appears that the amount of \$500 appropriated for the expenses of each county committee will be more than adequate for a few of the committees but quite inadequate for larger counties.

"Long distances; several come 180 miles (to committee meetings)."

"Insufficient money." (Statement duplicated in reports from three counties.)

"Mileage for each meeting costs \$50.00. Other expenses will include maps and additional clerical help."

"Long distances mean that \$500 will be used up by Spring."

"Mileage of the committee members will be over \$500."

"In order to pay mileage, it costs \$42.56 per meeting."

"Many members and others helping do not ask for reimbursement."

"Committee has had eight regular meetings and one sub-committee meeting. These cost \$184.03. Additional expenses for maps have been \$30. We feel that we are just getting started on our work."

"We will need again as much because of the size of our area."

These comments, considered in the light of the necessity of retaining a proper share of the appropriation in each county for expenses of elections on the plans, including proper publication expenses plus \$5.00 per election judge, indicate a serious need for further implementation of these funds if the work is to proceed adequately. A provision allowing the State Department of Education to reallocate surplus funds from those committees not needing the full amount to others

demonstrating real necessity for additional amounts would be a partial solution to this problem.

11. What Kind of Assistance Is Needed or Has Been Obtained by the Committee?

The State Department of Education has devoted time of four professional staff members and one clerical position on a full-time basis to the implementation of the program. The committees have been using these services very steadily, to the point where other members of the staff have been called upon for special help. As the committees move from their study projects into development of plans, and later into programs of public relations to gain acceptance of the plans, these demands will no doubt multiply. The committees have been encouraged to use resources other than the State Department of Education staff, and these comments indicate that these suggestions are being followed:

"Arrangements completed for a committee from Colorado State College to assist with countywide survey."

"Superintendents are cooperating in a comprehensive study and in a uniform manner to compile data concerning the location of students, transportation, road conditions, physical facilities, and financial data."

"Clerical work being done by individual schools and the county superintendent."

"Various committees appointed by the chairman."

"County superintendents needs more time to help the committee members."

"Survey conducted by county superintendent's office."

"The committee requested the superintendents of high schools and grade schools to submit plans for their particular areas."

"Our county surveyor has given invaluable help."

"The state department has furnished adequate help."

12. General Comments and Suggestions

"We are not far enough along for studying any certain plan."

"We need more study and re-evaluation of the facts of the problem."

"The committee seeks an organization adequate for years to come."

"Problems are specific to a given area. Changes in school boundary lines must be slow and methodical."

"Plans are practically complete and ready for filing."

"We are combating a small group of people who are against anything for purely selfish reasons. Every meeting must be spent in airing arguments which they insist on having answered. We are trying to spread the truth, encouraging people to think, and explain everything as best we can."

"We do not feel that the committee has made any headway. There is too much haranguing and narrow thinking, either from the standpoint of taxes or saving the small school district as it is."

"It is hoped the legislature will make it possible for districts to unite voluntarily if such uniting is approved by the county planning committee."

"If this committee comes to a decision, it is going to take a long time. They are going into all angles rather thoroughly. After the committee comes to a decision in various areas of the county, key people must be contacted and a great deal of selling will have to be

done before it could possibly be passed."

We hope these excerpts from reports of the county committees tend to put the present status of the program in good perspective. From these comments it can be seen that the committees are at various stages of progress, with most of them just getting down to the real problems. The significant thing standing out at this point is that in the face of the tremendous challenge of their problems, there is very little of defeatism expressed, and a great deal of determination to fulfill the duties of the committees. Also, there is the general impression that to do the task properly, time and effort is needed. The real miracle of the process is that several of the committees are at this early date moving into position to hold elections on their plans.

In general, the State Department of Education has been heartened by the interest and devotion the members of the county committees have given to their tasks. The spirit of cooperation and breadth of vision generated within these volunteer groups in a short space of time has been a true inspiration, and augurs well for the overall success of the program. But we fully recognize there are tough problems and barriers to be dealt with in many areas. Under this type of voluntary reorganization program, time and patience are required. During the year, the State Department of Education has reported regularly to the Legislative Council on its experiences under the program. The Department will, if requested, continue to do so during the coming year. We think the coming year will see the real test of whether the major portion of the work can be accomplished by the people on a voluntary basis.

When Senate Bill 385 was under consideration by the Colorado General Assembly, its critics spoke either from the position that the procedures envisioned in its provisions were too strong and would therefore not be popularly accepted, or from the position that the procedures were too weak, and nothing could be accomplished under them. It is not within the province of this report to justify either of these positions, but rather to report the facts in order to give those who must ultimately evaluate the work under the law the clearest sort of framework in which to perform this evaluation.

It should be pointed out that the committees are making this first report with barely enough time to have organized and to have begun their study process. Some of the committees had met only two or three times when they submitted their reports. At most, eight meetings had been held. Under the experience of old House Bill 900, which provided similar machinery, it is to be noted that the heavy portion of the work accomplished came from the tenth to the eighteenth month after the effective date of that law. There is no apparent reason to believe that the experience under Senate Bill 385 will be any more rapid.

Staff members of the State Department of Education have observed that every committee had to go through an exploratory period while the members got acquainted with one another and with the scope of their work, as well as determining their methods of procedure. During this period of exploration, the meetings have been irregular with somewhat lengthy lapses between meetings. As the committees get acquainted and gain confidence in their leadership, the meetings become more regular, and tend to increase in frequency.



## Statewide Meeting

On December 5, 1957, a statewide meeting of the chairmen and secretaries of the county school planning committees was held in the Fairview Junior High School Building of Boulder County, School District FC5. Forty-two counties were represented. The purpose of the meeting was to provide an exchange of ideas on our common problem and to discuss the format and content of the 1958 report on school district organization to the Colorado General Assembly. The discussion of questions and problems confronting the various committees was helpful to all present. The proceedings of this meeting are found in Section III. The committee members were strongly encouraged to use their reports as vehicles of communicating their problems to the Colorado General Assembly, and it will be noted that the portions of the reports which deal with problems of legislative consideration have been abstracted and summarized.

The general atmosphere of the meeting and the reaction of the participants were very favorable towards the progress of the program.



## SECTION II

### COUNTY STATEMENTS ON STATUS AND PROGRESS OF COMMITTEES

Each committee was asked to provide a concise statement on the date of organization, the meetings held, and other pertinent information of interest to the Legislature. Although many of these statements contain only a sentence or two, in general they represent the preliminary state of operation that now exists.

In order to appreciate the progress being made, it is necessary to read between the lines. The sheer task of getting the committees organized, getting them to understand each other is a slow difficult process that can be described in a very brief paragraph but is a paragraph that represents endless hours of systematic effort. These brief statements represent far more than at first meets the eye.

#### ADAMS COUNTY

The committee was organized June 12, 1957. The elected members met regularly each month. Sub-committees were set up for each area. They plan to visit every school district in the County. To date they have visited areas in most need of help. The problems have been many and varied. They have experienced terrific interest and genuine cooperation throughout the County.

Each committee member was delegated to make a study of his area, locating the residences and reporting, so that an effective map could be made. An inch scale highway map of Adams and Arapahoe Counties combined has been mounted, and the results of the findings of the committee members has been placed on the map. Also, a study of Adams County showing valuations, enrollment, etc., was made.

Committee members from Morgan and Arapahoe Counties have met with the committee in areas affecting them.

Help was received from the State Department of Education. Dr. Swenson paid one visit. Mr. Leftwich came several times and once took the group on a field trip to an isolated area to investigate the problem faced in these locations.

No definite plans have been made at this date. Forty-seven people representing fifteen school districts in Adams, Arapahoe, and Elbert Counties, which had met with the area sub-committee at another date, presented suggested districts.

Next Committee meeting planned for January 16 at Adams City Elementary School. At that time a study will be presented of the districts suggested by

this group and a study of the area as a whole, hoping to show the advantages of a large administrative area as compared to many smaller areas.

One petition was received asking that an elementary school district be allowed to remain as it is.

At each meeting of the Committee the main objectives of Senate Bill 385 are reviewed. The N. E. A. slogan prevails - "Put the Child Before the Dollar Sign."

Committee not represented at the statewide meeting.

#### School Planning Committee

Francis M. Day, Westminster, Chairman; Mr. R. C. Wilson, Aurora, Vice-Chairman; Bertha Heid, Brighton, Secretary; Anthony Ciocchetti, Denver; Arthur W. Wailes, Fort Morgan; Arthur W. Eppinger, Eastlake; Jesse E. Powers, Henderson; William Kersiek, Strasburg; Earl Matscheke, Derby; Orville H. Schisler, Aurora; Sidney F. Hanks, Strasburg; Leroy Mosbarger, Byers; Clyde L. Miller, Aurora; Dr. John W. Thimmig, Brighton.

#### ALAMOSA COUNTY

The County School Planning Committee was organized May 28, 1957 and has held regular meetings the third Friday of each month. Sub-committees are studying various plans and a plan of a county unit. All members have maps of the county and the joint districts. When the survey of the sub-committees are completed, the committees will decide tentatively upon a plan that seems feasible. They expect to employ a local person to compile statistics including a budget for the district plan or plans.

The county unit plan as proposed will use the present attendance centers with two high schools, one or more junior high schools and seven elementary attendance centers. Special subjects and supervision of instruction would be handled on a countywide basis.

A fear of loss of representation is one handicap and this may be overcome by a thorough study of the director districts to be sure areas are certain to be represented.

Our expenses are high and the \$500 allowed will only cover about half of the cost.

#### School Planning Committee

Nelson Gray, Alamosa, Chairman; Malcolm Stewart, Jr., Hooper, Vice-Chairman; Vera E. Linger, Alamosa, Secretary; Louis F. Higel, Alamosa; Wallis Owens, Alamosa; Marvin Gammon, Alamosa; Delmar Gumper, Alamosa; Robert C. Taylor, Alamosa; Nick Rolling, Alamosa; John Ryker, Alamosa; Arlie Bradley, Mosca;

Esequiel Valdez, Alamosa; Revere Berryman, Mosca; Howard Burkholder, Monte Vista.

#### ARAPAHOE COUNTY

The committee organized May 24, 1957 and meets regularly once a month. A map is in the process of being prepared. Members are busy making individual surveys necessary to preparation of map and to accumulation of factual information required prior to development of plans and have not interpreted findings, so no proposals have been made. The committee has not experienced any particular problems yet. No joint meetings have been held, but preliminary plans of Adams County area adjoining Arapahoe County are being studied. The \$500 is sufficient appropriation. The State Department of Education has supplied all necessary information on our request, as well as consultation for several of our meetings.

#### School Planning Committee

George Dickinson, Littleton, Chairman; Wesley Slater, Byers, Vice-Chairman; Beulah L. Davies, Littleton, Secretary; Ross Frager, Englewood; Ora Oliver, Englewood; Rufus Miller, Englewood; Robert Sitler, Englewood; James Taylor, Englewood; Jack Rhine, Strasburg; Chris Wailles, Bennett; Cecil Cook, Strasburg; John Taparo, Bennett; Linly Hollingsworth, Deer Trail; Henry Buchtel, Englewood.

#### ARCHULETA COUNTY

Since this County was completely reorganized under Article 8, Chapter 132, Colorado Revised Statutes 1953, it was requested to form a planning committee on a standby basis to consider any joint district plans its neighboring counties might propose. To date no report has been received from this county.

#### BACA COUNTY

The Planning Committee was elected by board presidents on May 29 with the official organization of the committee on July 6. Regular meetings of the planning committee are held on the first Thursday of each month.

Four committees were appointed to study and prepare maps. These four committees studied roads, finance, pupils, buildings, and location of utilities. Other studies being made cover valuation per student education costs, finances, and location needs; also how a first class district operates and where schools will have to be located.

Other studies deal with high school education and where high schools will have to be located to serve all the children without too much transportation, number of high school students attending high school, and accreditation requirements.

Problems encountered by the committee include inadequate roads, unevenly distributed utilities and many students too far to be transported, and, finally, a building program long overdue.

Proposals considered by this committee include the following:

1. Possibility of five districts in the county built around the five present high schools.
2. Methods of selling a county unit plan without a bond leveling possibility.
3. Practicality of seven attendance centers to serve all the county.

Difficulties facing the committee are best described as:

Opposition to change

Bonding problem of all kinds

Insufficient information accumulated

One proposal has been presented thus far. This proposal calls for combining three districts with #38 in the Campo area. This proposal is favored since it would care for the children in the southern part of the county without adding buildings or transportation.

Funds are insufficient to get qualified people to take the time to prepare studies. Funds are even insufficient to pay travel to attend meetings, much less pay for travel studying the situation.

#### School Planning Committee

Warren Prinley, Pritchett, Chairman; Charles S. Makey, Two Buttes, Vice Chairman; Eva M. Acre, Springfield, Secretary; Bryron Russell, Springfield; Melvin J. Fleck, Springfield; Lewis Alfrey, Vilas; Clarence Burson, Walsh; Wayne Cramer, Campo; J. T. McEndree, Springfield; A. F. Mizer, Utileyville; Victor Schnauffer, Campo; Lee Bixler, Walsh; H. C. Miller, Lycau; Lowell Wade, Campo.

## BENT COUNTY

The committee was organized June 26, 1957 and meets the last Wednesday of each month. Committee members are very faithful. All have been present at meetings or have asked to be excused. As the problem is more thoroughly understood; the more interesting the meetings.

The committee placed on map: pupil enrollment per district, valuation, and mill levy. The secretary of the Committee supplied information for a survey covering the entire county.

The survey reveals that there are 42% of Elementary pupils in one attendance unit. -- The ten attendance areas located along Highway and Arkansas River Valley. 12 mill levy will affect nonoperating districts in greater per cent increase than those operating schools. Transportation should be provided for grades 1 thru 12.

Committee discussed the possibility of a county unit and two-district county. They find it difficult to explain the meaning of attendance units, the work expected of a "true administrator". That "real school problems" would not take up time of Board members but that the administrator and his staff would investigate and solve. District board members feel that the community would lose its identity.

The Committee believes that the 3/4 C. R. U. for any school with less than 15 who have access to another school within five miles should be removed. They suggest a transportation refund from State for those who are transporting out of their own district for the benefit of better education.

R-13 - Wiley - Prowers County requested Bent County Committee to leave the present joint districts as is. Bent County Committee accepted the proposal. Mr. Leftwich and Mr. Hardin were used as consultants. Good work by each.

### School Planning Committee

Mr. C. A. Watkins, Las Animas, Chairman; Mrs. Melva Busbey, McClave, Vice-Chairman; Hazel L. Martin, Las Animas, Secretary; C. H. McBride, Las Animas; Beulah M. Hall, Las Animas; Gladys Turner, Las Animas; George Reyher, McClave; Bruce Purvis, Las Animas; Roy D. Cooper, Las Animas; Delbert Wallace, Las Animas; Myrtle Lash, Caddoa; J. Gerald Allmendinger, Wiley; Virgil Campbell, Lamar; Jeff Pointon, Las Animas.

## BOULDER COUNTY

The County School Planning Committee was organized May 31, 1957 and has met oftener than twice a month. County maps have been prepared for use and statistics compiled on present districts. The committee has visited all high school facilities.

Proposed county unit plan and plans to form two districts of the county

are being studied. There is some opposition from boards and administrators to a large unit. In proposed smaller districts unequal valuations per pupil pose a problem.

The committee hopes to have a plan or plans ready to present by February 1, 1958.

#### School Planning Committee

Charles E. Williams, Boulder, Chairman; Glenn Fischer, Louisville, Vice-Chairman; Glen W. Pennock, Boulder, Secretary; Clyde C. Gelwick, Aurcra - Boulder, Wm. L. Worcester, Longmont; C. C. Waneka, Lafayette; Mrs. Wanda McDermit, Broomfield; Robert W. Gibson, Gold Hill; L. E. Cushman, Longmont; Everly Austin, Longmont; Mrs. Robert J. Busch, Longmont; George F. Kinzie, Lyons; Wayne C. Hazen, Boulder; Roger Edward B. Stevens, Boulder.

#### CHAFFEE COUNTY

Committee was organized June 15, 1957 and meets monthly. Members have been serious and conscientious. They have worked slowly trying to get a complete picture of the school situation in this county and how it can be improved through organization of the school districts.

Maps have been prepared showing how the county may be organized into one district or two districts. Also, maps showing population and transportation areas have been prepared.

Surveys include: Valuation of districts, cost of operating schools, welfare of pupils, advantages of larger district. A survey was made of present school buildings, both used and not now used. Study made of how these districts might be organized into one district or two districts. Surveys have had complete coverage of the County.

Plans studied have included: County organized into one district with a seven men board; Attendance centers in Salida, Buena Vista; Primary grades at Poncha Springs, small school at Granite. (or) County be divided into two districts -- One in the north end and the other in the south end at evenly divided as to area as possible. (or) County to be divided into two districts -- the northern part to contain Buena Vista and Granite, the remainder of the county in another district.

The one district plan would probably be the best in every way for welfare of pupils and an efficient school, but meets with opposition of a number in the Buena Vista School District.

Problems encountered: More interest in the taxes than the pupils. Too great an emphasis upon maintaining a small local school in some areas when pupils could be transported to larger area -- distance not great.

No proposals at the present time. The county is working on the consider-



ation of three districts: One district for county, two districts in county, and another two-district plan.

The appropriation of \$500 appears satisfactory at the present time.

Mr. Leftwich has met with us several times and has been very helpful.

Would like to see Section 39 of Senate Bill #385 changed so that districts that wished to vote to be annulled and added to larger districts might do so.

#### School Planning Committee

Jos. E. Stewart, Chairman; Parker Woolmington, Nathrop, Vice-Chairman; Bessie M. Shewalter, Salida, Secretary; Vernon Deihl, Granite; Charles Wattles, Nathrop; Floyd C. Beck, Poncha Springs; Robert Doyle, Salida; Robert Harrison, Salida; Troy Kelly, Buena Vista; Donald Mumma, Salida; Glen McMurray, Nathrop; Hazel Lindsay, Salida; Dr. Wendell Hutchinson, Salida; Glen C. Green, Salida.

#### CHEYENNE COUNTY

Committee elected June 1, 1957 and organized August 6, 1957. Members instructed to find out the wishes of their districts. A three district plan considered October 22. Motion made to consider uniting the three districts in western half of the county into one. Maps in preparation showing: bus routes, homes of children, and number of grade and high school students in each home. Interest is growing. Maps to be completed at the next meeting may give a picture that may help make decisions.

#### School Planning Committee

Luther Nelson, Cheyenne Wells, Chairman; Cecile G. McGlaskey, Cheyenne Wells, Secretary; Lloyd Price, Kit Carson; Don Collins, Kit Carson; Bill Rhoades, Kit Carson; Dorothy Wales, Cheyenne Wells; John Vandemoer, Cheyenne Wells; Rodney Blankenbaker, First View; Arthur Waugh, Arapahoe; Frank Howard, Arapahoe; Lowell Reynolds, Arapahoe; H. C. Holt, Wild Horse; Alice Bledsoe, Aroya.

#### CLEAR CREEK COUNTY

The County School Planning Committee was organized July 23, 1957 and has met regularly once a month. Maps are being prepared of the county. A consultant from the State Department of Education has met with the committee. A questionnaire is being prepared.

### School Planning Committee

Virgil M. Payne, Idaho Springs, Chairman; Mrs. Priscilla Kiefer, Evergreen, Vice-Chairman; Frances B. Richardson, Georgetown, Secretary; Mrs. Eunice Kissel, Georgetown; Mrs. Madge Johnson, Lawson; Ivan Smith, Georgetown; Ray Wilson, Dumont; George Gaubatz, Silver Plume; Ray Millard, Evergreen; Mrs. Lucille Hedke, Empire.

### CONEJOS COUNTY

The County School Planning Committee was organized July 22, 1957 and has held regular monthly meetings. The secretary has compiled statistics on enrollment, valuation, cost per child, etc. A survey of school facilities and a visit to each school plant in the county is scheduled for November 25 by the entire committee. One committee is gathering information on costs of a senior high school building.

The committee has discussed a one-district, two-district and three-district county plan. All one and two room schools to be closed and wherever possible pupils transported to larger centers. No definite plan has crystallized as yet. Because of the larger bonded indebtedness in our two largest districts, it may be that the county will be reorganized into two districts.

It would help reorganization in the county if we had a law that would permit all territory in a reorganized district to assume all bonded indebtedness of the area.

The committee needs more meetings with the state department staff and must compile further data on schools and school needs. The \$500 allotted for expenses is not sufficient.

### School Planning Committee

Antonio Lucero, Antonito, Chairman; J. A. McDaniel, La Jara, Vice-Chairman; Robert Montano, Secretary; Clayton O. Peterson, Sanford; L. N. Headlee, Sanford; Martha Howes, Romeo; Benito Muniz, La Jara; Clyde Helms, Jr., Alamosa; Juan R. Tafoya, Antonito; Dale N. Sowards, Manassa; Lucia Q. Duran, Antonito; Clifford A. Coleman, La Jara; Juan B. Lobato, Antonito; Casper Garcia, Antonito.

### COSTILLA COUNTY

The committee was organized May 24, 1957. It has met somewhat irregularly, but has conducted some study activities. It has considered a plan for three

districts in the southern part of the County, but discarded this plan because of the weaknesses evident in some of the proposed areas. It now has under consideration a two-district plan for the County. Consultants from the State Department of Education have worked in the area twice since the committee was formed.

A sub-committee of three persons was appointed to make a study of the schools, and they have visited all districts except New San Acacia. The buildings are outdated, seats are in poor condition, heating is inadequate, toilet facilities are very poor, and drinking water is unsafe. These conditions exist in about half of the districts, the condition of the balance is satisfactory.

#### School Planning Committee

Robert Winner, Mesita, Chairman; Rudolph Pacheco, San Pablo, Vice Chairman; Polito Martinez, Jr., San Luis, Secretary; Eleuto Medina, San Luis; Felix Garcia, Garcia; Lula Jaquez, San Acadio; Eduvigen Sanchez, Chama; Jake Medina, San Pablo; Mose Francis, Jaroso; Stanley Adler, San Acacio; Daniel Quintana, San Pablo; George Prunty, Jaroso.

#### CROWLEY COUNTY

The committee was organized May 28, 1957 and meets regularly once a month. Each member was supplied with a blank map. A survey was made through the office of the County Superintendent. A table of expenditures of all school districts in the major classifications. The enrollment by grades and number of teachers in each school, the high school courses offered and number of pupils in each class, the number of bus routes, mileage, and number of pupils transported all were included in the survey.

Two plans are under discussion -- a county unit and a two district plan dividing the county from north to south at approximately the middle of the county. Neither plan is receiving much support.

Difficulties have been encountered, lack of a building large enough to house a single high school without having to transport some of the elementary pupils to another town, opposition to a bond issue, sparsity of population in some areas and the distances some pupils must be transported.

The committee suggests the following legislative remedies: Some method whereby total classroom units in the county would be reduced by reorganization. The finance law should clearly state how many additional classroom units for attendance centers the County could expect to receive.

Some tentative proposals have been made for areas in this county to be joined to districts in other counties and areas in other counties to be joined to the district or districts to be formed in this county, but they have not passed beyond the discussion stage.

Plans under consideration include a single district for the County to Step No. 7, and two districts for the County to Step No. 7. The five-hundred dollars for expenses appropriated will probably suffice.

#### School Planning Committee

H. F. Raith, Ordway, Chairman; C. L. Galbraith, Olney Springs, Vice-Chairman; William Broadbent, Ordway, Secretary; Vern Apple, Crowley; Daniel J. Mumm, Ordway; Virgil Trotter, Sugar City; J. S. Wright, Olney Springs, Theo. R. Butler, Sugar City; Charles M. Williams, Ordway; Alfred Norton, Olney Springs.

#### CUSTER COUNTY

This county committee was organized (no date given) and has met three times, but does not meet regularly. Custer county is three-fourths reorganized. C-9 is the only district to be considered, and C-9 is working at present on its own problem.

The committee has made a survey, and surveys are being made by sub-committees. C-9 is investigating financial and geographical problems. The coverage is complete.

Wetmore has to decide whether to go to Fremont County or come into C-1 District previously reorganized under House Bill 900.

It hasn't been decided yet whether C-9 should go into C-1 District reorganized under House Bill 900 or into Florence, Fremont County.

The committee is investigating: costs, educational advantages, etc.

Wetmore C-9 wants proper board representation in district they enter, financial and geographic problems are to be settled first.

At present no legislative remedies are needed.

C-9 wants younger pupils to remain in Wetmore School. There is a problem of greater expense in Fremont County, but a better geographical situation. The possibility of joining with the nearer district of Florence County was discussed with the Florence committee. This probably will be the solution.

Sufficient funds have been supplied so far. Mr. Leftwich was called in as consultant.

Problems in Custer County aren't too great. The committee has settled on a plan for reorganization with C-1 in Custer or with Fremont County; the final decision is to rest with District C-9.

School Planning Committee

Mrs. Barbara Donley, Chairman, Wetmore; Mr. George Draper, Wetmore, Vice-Chairman; Frances E. Kettle, Westcliffe, Secretary; Ray O. Adams, Westcliffe; Lawrence Entz, Silver Cliff; Van Kelly, Rosita; Wilbur Vickerman, Westcliffe; Francis Hall, Wetmore; Virgil Lawson, Wetmore.

DELTA COUNTY

Delta County was completely reorganized under the provisions of Article 8, Chapter 123, Colorado Revised Statutes 1953, this county was excused from forming a school planning committee.

DENVER COUNTY

Since Denver City and County has only one school district embracing the entire city and county, it was excused from forming a school planning committee.

DOLORES COUNTY

The County School Planning Committee was organized June 28, 1957 and has held four called meetings. A map of the county is being prepared and studies of attendance centers, centers of population, census and valuations of existing school districts as well as of the topography of the county are being made. The plan of forming three grade school districts providing for education K-8 and continuing the county high school system has been discussed. A joint meeting was held with a part of the Montezuma county committee to discuss the possibility of a joint district of portions of the two counties. Consultants of the State Department of Education have met with the committee.

School Planning Committee

L. A. Stowe, Dove Creek, Chairman; C. E. Crapo, Dove Creek, Vice-Chairman; Nathan V. Mellott, Dove Creek, Secretary; M. Anna Engel, Rico; Roy West, Norwood; Mrs. Lesley Lub Dressel, Dolores; Raymond B. Neely, Cahone; Raymond Doyel, Dove Creek; Charlie Terrill, Norwood; Mrs. Marie Tobin, Dove Creek.

## DOUGLAS COUNTY

The County was organized July 17, 1957, and has met about once a month since. Farm work during harvest made some variation in committee meetings.

A county map showing student census for pre-school, elementary, junior high, and senior high was prepared. A survey of the school census, location of students, and projection of growth was made.

County has not yet considered proposals for change. The county finds the amount of \$500 allocated insufficient. The Bureau of Education Research from the University of Denver is assisting the committee.

No plan has been prepared by the committee of Douglas County. Careful study of the law has been made, and, consideration of educational objectives of the school program. A countywide educational program and an awareness of the people of the county is underway. Representatives of the committee have met with various P. T. A. and citizen's groups. Until a thorough enlightenment has been achieved and people throughout the area are involved, no plan will be presented.

### School Planning Committee

Ed Rodine, Chairman, Parker; C. A. Hebert, Vice-Chairman, Sedalia; Robert F. Metzler, Secretary, Castle Rock; Ralph Walker, Franktown; Don Brown, Larkspur; Charles Tanin, Castle Rock; David Stump, West Creek; Charles Higby, Greenland; George Manhart, Castle Rock; Frank Fenton, Louviers; Mark Wilkinson, Rt. 1, Littleton; Helen Arfsten, Greenland; William Lane, Sedalia; John Paulk, Larkspur.

## EAGLE COUNTY

The Eagle County School Planning Committee was organized on May 27, 1957. The result was a thirteen member committee that has a representative from each district. There are seven members who serve on various school boards and seven members who are lay people. The attendance, interest and enthusiasm of each member is excellent. D. E. Johnson was selected chairman and has shown remarkable interest, leadership and diplomacy.

In 1955 a comprehensive survey of Eagle County educational facilities was made. These studies and surveys were available. The committee decided to review that past information in order to become more informed on local conditions. Committees were appointed to review transportation, enrollments and drop-out, curriculum, finances and facilities.

At the next meeting reports from these committees showed that most of the information of the past study was obsolete and more current data would be necessary for accuracy. All members showed a desire to accomplish its purpose but they were at a loss to know the next procedure. Stanley Leftwich was contacted and met with the committee on August 12th. He reviewed progress of

reorganization on the state level and gave valuable suggestions on future procedures. A suggested plan was presented by Mr. Johnson for three high school attendance centers in the county, one at Basalt, one at McCoy, one to be composed of the present Minturn, Eagle and Gypsum students, with Red Cliff Union to join this one or to remain where they are and junior high schools to be established to use present facilities. This plan was supported by a map upon which Mr. Johnson had indicated bus routes and transportation data, etc. Each individual member has been furnished with a map of the county -- has been given pertinent data such as guides to school district organization, district levies, valuations, and facts compiled by John Burke, a member of the committee, on enrollments and drop-outs.

At the next meeting superintendents of schools from the larger districts were invited to attend the meeting. By an unanimous decision of the committee it was moved and passed that consultants be contacted to supply professional advice as to the most feasible plan for reorganization in the county. Mr. Ripple, Superintendent of Eagle School, was asked to make these contacts. As a result of his efforts consultants from Colorado State College have agreed to make a survey and make recommendations to the committee. This survey will be made after preliminary local studies have been made. These local studies are under way. Two maps have been prepared upon which all students in 8-4 systems are spotted and also on a possible 6-3-3 system is placed.

With the fine cooperation and help of the Superintendents uniform facts are being compiled by committees in each district which will show courses offered, enrollments, equipment, present classroom capacity and potential, text books, sites -- facilities, including buildings for lunchrooms, libraries and physical education. Also the financial status of each district which will include valuations, mill levies, cost of maintenance, equipment and transportation along with per capita costs.

With everyone working together the present plans are to have all information ready so that the consultants can make a personal survey by the middle of December and their recommendations will be presented to the committee in December. From all this basic information the committee can start in January to formulate and present to the voters a county plan for reorganization of Eagle County School district.

#### School Planning Committee

Mr. D. E. Johnson, Eagle, Chairman; John Burke, Minturn, Vice-Chairman; Jeannette Buchholz, Eagle, Secretary; Jack Elliott, Red Cliff; James Bown, Gilman; Del Mayne, Avon; Mrs. Oda Schultz, Edwards; Leonard Horn, Wolcott; Rex Mayne, Gypsum; Mrs. Ruth Martin, Gypsum; George Gates, Burns; Roscoe Paris, Bond; Walter Forster, Radium; Earl Nelson, Basalt.

## ELBERT COUNTY

The committee was organized May 28, 1957, and has met once each month since. Planning is in the discussion stage. A map of the county has been prepared. People are satisfied with the schools they have. Mr. Stanley A. Leftwich attended the November 26th meeting.

### School Planning Committee

Dewey Carnahan, Elbert, Chairman; Reuben Olson, Ramah, Vice-Chairman; Evelyn D. King, Kiowa, Secretary; Clark Ashmore, Kiowa; Samuel Bishop, Deertrail; Emil Bostrom, Elizabeth; Burton Elsner, Elbert; Wilbur Lucore, Elizabeth; F. L. Mock, Byers; Leland Olkjer, Elbert; R. F. Rickart, Simla; Adrain Skinner, Limon; W. H. Ververs, Simla; Earl B. Wood, Simla.

## EL PASO COUNTY

The County School Planning Committee was organized July 1, 1957, and has regularly monthly meetings. A map of the school districts of the county has been prepared and comparative statistical figures of school district costs and valuation per pupil have been assembled. Minor boundary changes for a joint district will be considered.

### School Planning Committee

Mr. Mayo Anderson, Rush, Chairman; Mr. Lester Mitchell, Calhan, Vice-Chairman; Georgianna Kettle, Colorado Springs, Secretary; Donald Giverson, Colorado Springs; Edward Bryant, Colorado Springs; Charles Torbit, Jr., Fountain; Mr. F. Garnet Monck, Colorado Springs; Dr. R. W. Urich, Colorado Springs; Homer F. Davis, Manitou Springs; Dr. W. W. Cogswell, Jr., Colorado Springs; Raymond Masters, Pueblo; Mr. M. E. Hamilton, Yoder, Everett Hardle, Calhan; Standley Scott, Palmer Lake.

## FREMONT COUNTY

The County School Planning Committee was organized May 27, 1957 and has been holding regular monthly meetings. County maps have been prepared and the committee is conducting a school survey. Meetings are being held in various parts of the county with residents of two or more districts present at each.

### School Planning Committee

Gordon Stewart, Portland, Chairman; John Verlengia, Coal Creek, Vice-Chairman; M. Adella Archer, Canon City, Secretary; Dr. Stewart Howe, Canon



city; John Carrerlo, Florence; Jack Carroccia, Howard; Perry Earley; Penrose; Mrs. Audrey E. Kosek, Florence; Mrs. Ruth Littig, Florence; Mrs. Catherine Morello, Rockvale; Mrs. Mildred Ruddock, Penrose; Robert Shoemaker, Garden Park; John C. Vendetti, Florence; Peter A. Young, Cotopaxi.

#### GARFIELD COUNTY

This committee was organized May 25, 1957 and met regularly each month except for the month of October. Beginning with the November meeting the Committee decided to meet twice each month with the first meeting in Rifle on the first Tuesday and in Glenwood Springs on the third Tuesday.

A map of the County was prepared showing district lines, schools, number of teachers, students and grades. Committee members were asked to submit maps marked with the correct transportation routes in their particular district. Maps were completed in the county superintendent's office. An employed person was used in determining the transportation routes showing number of miles and as near as possible the number of students.

Findings of the survey will be studied at the December meeting.

No particular plan has been discussed to date. The committee wants to be sure before any proposals are decided upon. The committee has worked slowly. Mr. Leftwich, of the State Department of Education, has been helpful to the committee each of the two times he has met with us.

The committee does not feel it is ready to discuss any proposals with adjoining counties, but will do so when the time comes.

#### School Planning Committee

Kenneth Balcomb, Chairman, Glenwood Springs; Owen Boulton, Vice-Chairman, Silt; Josephine Busby, Glenwood Springs, Secretary; C. F. Kimminau, Glenwood Springs; Mrs. Freida Jackson, Glenwood Springs; Austin Heuschkel, Carbondale; Claude Dorrell, Rifle; Mrs. Verva Bowen, Rifle; H. H. Hawxhurst, Rifle; Tell Ertl, Grand Valley; Frank Porter, New Castle; Oliver Diemoz, New Castle; Albert Cerise, Carbondale; Wilbur Couey, Silt.

#### GILPIN COUNTY

The committee was organized on September 19, 1957. Although the committee has held very few meetings, it has really begun its study work since the consultant from the State Department of Education met with it on November 26th.

The north end of the county which has relatively few children, but the largest portion of the County's assessed valuation presents a problem in that the geographic features of the County force this section to look to small schools in Gilpin County for the elementary grade children or to Boulder County Schools.

The committee is exploring a one-district plan, but feels that the failure of the election on a similar plan under old H. B. 900 is still an obstacle.

#### School Planning Committee

Mrs. Phyllis Powers, Central City, Chairman; Mrs. Laura Ress, Russell Gulch, Vice Chairman; Edith W. Carter, Central City, Secretary; Mrs. Rita Ace, Central City; Mrs. Ruth Blake, Black Hawk; Mrs. Mildred Blake, Black Hawk; Mr. Henry Ress, Russell Gulch; Mrs. Mary Cotter, Rollinsville; Norman Wheller, Golden; Milfred Peterson, Black Hawk; Fred McCollum, East Portal; Mrs. Roberta McCollum, East Portal.

### GRAND COUNTY

The county school planning committee was organized June 25, 1957 and meets regularly once a month. The Committee has studied school enrollments of the county as well as the district levies and valuations. Much of the study has been carried on by two sub-committees, representing the West Grand County and East Grand County areas. The county seems to be ideal for a two district plan with Byers Canyon the geographic dividing line. Detailed studies of these two areas show them to be adequate as to educational requirements and each has adequate valuation to assure sufficient support financially. The committee has held preliminary meetings to explain the plans in each area and the people seem to be reasonably well satisfied. An area of Summit county that is more accessible to the West Grand area has been released by the Summit county committee and accepted by the Grand county committee to be a part of the West Grand county proposed district. Plans for the proposed districts are being prepared for submitting to the Commissioner of Education for approval. If the plans are approved, election will probably be held early in 1958.

#### School Planning Committee

Dr. E. G. Ceriani, Kremmling, Chairman; Mr. Mac Ruske, Grand Lake, Vice-Chairman; Lorryne Gould, Hot Sulphur Springs, Secretary; Glenn Sheriff, Hot Sulphur Springs; Russell Bowlby, Fraser; Larry Keenan, Tabernash; Senator Fay DeBerard, Kremmling; Dr. George F. Warren, Granby; Mrs. Leahbeth Barnard, Granby; Mrs. Nadine Scholl, Parshall; Mr. M. R. Leroux, Radium; Ted Engle, Sr., Kremmling.

GUNNISON COUNTY

"The County School Planning Committee was organized May 23, 1957 and has held meetings when the members thereof vote to meet. The committee met November 2, 1957 and again November 21, 1957. Will meet again in January, 1958.

"County maps have been prepared by the county superintendents. Because all the children are already provided with good schools, the studies are principally financial. The whole county has been reviewed. There are no proposals of school district changes as yet.

"Nearly all the children of this county have long had the best schools their parents and the school boards could provide for them, so there is no general clamor for any changes. Repeal of the law which provides that transportation funds shall be apportioned by the State Board of Education, and let S. B. 217 apply to the end that school districts may unite voluntarily without feeling that they are being financially coerced into letting unknown persons assume the responsibility of their school buses, the routes they will take and the drivers with whom their children will be trusted. The present ruling is resented by the entire county.

"As to the \$500 appropriated for the expenses of the county committee, we have not yet started to spend money, but \$500 seems little enough.

"The County Superintendent of Schools procured maps from the U. S. Forestry office upon which she made up the boundaries of all the districts in the county, one map for each member of the committee.

"The County Superintendent of Schools made up studies of all the finances of all the districts in the county which was dittoed and presented to each member of the committee.

"The county budget affords only \$600 per year for an office assistant for the County Superintendent of Schools, and the State Department of Education offers but \$500 per year for the entire committee of thirteen members. Hiring anybody to do office work for that amount cannot be done in this region. The County Supt. of Schools simply adds the duties of reorganization to the other endless tasks of the job and a very good time will be had by all except those who are waiting for the reports which may not always get there on time."

Signed by      Sylvia P. Carroll, Secretary  
County Planning Committee

School Planning Committee

Sheldon Trampe, Gunnison, Chairman; Edward Blackstock, Iola, Vice-Chairman; Sylvia P. Carroll, Gunnison, Secretary; Pete Field, Parlin; David Howard, Powderhorn; Ernest Means, Sargents; Charles Niccoli, Crested Butte; Lawrence Phelps, Gunnison; Dr. Donald M. Petersen, Gunnison; Walter Rhoades, Doyleville; Albert Soderquist, Cimarron; Mr. R. G. Verzuh, Crested Butte; Howard Eilebrecht, Gunnison.

## HINSDALE COUNTY

The County School Planning Committee was organized June 24th and has met irregularly. The members are still undecided as to which of two plans to follow and are still making investigations. There is a problem of forming a joint district with Gunnison County. Transportation difficulties are aggravated by the terrain of the county. Much more study is necessary.

### School Planning Committee

Clarence Howard, Powderhorn, Chairman; Joel F. Swank, Lake City, Vice-Chairman; Carolyn Wright, Lake City, Secretary; Mrs. R. F. Wheeler, Lake City; Mrs. Wm. Griffiths, Lake City; Alex Carey, Lake City; Forest Cadwell, Powderhorn; Mrs. Forest Cadwell, Powderhorn; Orin Bauers, Powderhorn; Mrs. Walton Hatchey, Powderhorn.

## HUERFANO COUNTY

The County School Planning Committee was organized July 8, 1957 and has met once a month or oftener. The committee has held six regular meetings and one special meeting with the people in the Gardner, Colorado area. A county map showing pertinent data as: operating schools, non-operating schools, location of elementary and high school attendance centers, pupil population, Ag. D.A., etc., has been prepared.

Surveys by the committee include: district valuation, comparison of school district levies, census and enrollment by districts, road conditions, bonded indebtedness and valuation of school properties. Results show: a) great inequalities in per pupil valuation b) some rural schools near larger centers operating with too small enrollment c) County's economy at a low ebb, relatively low valuation, decreasing population.

Committee feels two districts for Huerfano County would be best plan. This would leave La Veta (organized under H. B. 900) as is and the other district would include the rest of the county. Considering the low valuation and small school population, the two district plan is the only one that would meet with the standards set up by S. B. 385.

The committee plans to visit all schools to become better acquainted with existing conditions. It has invited the County Commissioners to attend meetings. Their help will be valuable in regards to roads. The committee has also secured the services of an abstractor to help with the legal description of the districts proposed.

### School Planning Committee

John Albright, La Veta, Chairman; James Tesitor, Walsenburg, Vice-Chairman; Frances Nelson, Walsenburg, Secretary; James Lamme, Jr., Walsenburg; Virgil Ladurini, Walsenburg; Robert Meyer, Walsenburg; Harry R. Willis, La Veta; John Kimbrel, Walsenburg; Rueben Aguirre, Farisita; Paul Wolf, Gardner; Harry J. Capps, Pryor; Arthur L. Bressan, Walsenburg; J. W. Reed, Walsenburg.

## JACKSON COUNTY

The county school planning committee was organized June 4, 1957 and has held regular meetings once a month. One large map of the county has been prepared for study. Location of children of school age is one phase of the committee's study. Information has been assembled as to school enrollments, district levies, valuation of district, etc. Several suggestions concerning proposed redistricting have been suggested to the committee and are being studied.

### School Planning Committee

Peter Lepponen, Walden, Chairman; John Hartman, Rand, Vice-Chairman; Eva B. Mariette, Walden, Secretary; George Hatch, Walden; John Mallon, Walden; Merion Trick, Cowdrey; Mary Jecks, Cowdrey; Clayton Rich, Coalmont; Dorothy Mosman, Rand; Henry Jones, Gould.

## JEFFERSON COUNTY

Since Jefferson County is completely reorganized under the provisions of Article 8, Chapter 123, Colorado Revised Statutes 1953, it was excused from forming a school planning committee.

## KIOWA COUNTY

The county school planning committee was organized May 27, 1957 and holds regular monthly meetings. Studies carried on by the committee include: pupil enrollment, bus routes, teacher qualifications, buildings and sites, cost per ADA, transportation costs, as well as district levies and valuations. The present bonded indebtedness of three district poses a problem.

### School Planning Committee

Lloyd Berry, Rt. 2, Eads, Chairman; Dr. Lyle W. Graham, Eads, Vice-Chairman; Mrs. Lydia Ellsaesser, Eads, Secretary; Mrs. Lucille Shalberg, Sheridan Lake; Mr. Beverly Robertson, Arlington; Donald E. Rose, Rt. 2, Eads; Kenneth Brown, Chivington; Carl T. Ellsaesser, Eads; George Bickel, Haswell; Larry Kelley, Towner; Rose Below, Haswell.

## KIT CARSON COUNTY

The county school planning committee was organized July 12, 1957 and has regular monthly meetings with special meetings when needed. Discussion meetings are being held in various districts.

### School Planning Committees

Henry Hoskin, Burlington, Chairman; Marvin James, Burlington, Vice-Chairman; Willa Zick, Burlington, Secretary; Ray Hillman, Bethune; August Schreiner, Vona; Earl Henry, Vona; Ugene Brown, Stratton; George Hubbard, Flagler; Wayne Davis, Kanorado; Rober McClelland, Burlington; Harvey Wood, Stratton; T. C. Knapp, Jr., Burlington; Ernest Langendoerfer, Burlington; George Weidman, Burlington.

## LAKE COUNTY

The county school planning committee was organized May 24, 1957 and has met irregularly. County maps are being prepared to show distribution of children and other pertinent data. No specific plan has been prepared. A consultant of the State Department of Education has met with the committee.

### School Planning Committee

Francis Slavin, Leadville, Chairman; Edward J. Kelley, Leadville, Vice-Chairman; Elizabeth Cavanaugh, Leadville, Secretary; Dunbar Arnold, Climax; Mrs. Helen French, Leadville; Mrs. Mabel Houghton, Leadville; Mrs. Cecilia Paddock, Leadville; Robert Rinker, Twin Lakes; Dr. Wm. Rose, Leadville, William R. Wilson, Climax.

## LA PLATA COUNTY

The County School Planning Committee was organized June 19, 1957 and has been holding monthly meetings. County maps have been prepared and committee members are assembling the information on the districts they represent concerning enrollments, cost per pupil, valuations, levies, and transportation. Studies of the bond load on various districts are being made.

### School Planning Committee

Mrs. Noble Wells, Bayfield, Chairman; John Peters, Durango, Vice-Chairman; Vivian J. Maxwell, Durango, Secretary; Andrew Olbert, Durango; Marguerite Paulek, Hesperus; Mr. E. E. Lane, Ignacio; Lawrence Craig, Durango; Bruce

Sullivan, Durango; Mr. J. A. Lechner, Durango; Mr. W. C. Little, Hesperus; Mr. Mel A. Meyer, Durango; Arthur Isgar, Hesperus; Arthur Mason, Durango.

#### LARIMER COUNTY

The county school planning committee was organized June 18, 1957 and has held regular monthly meetings. A large map of the county has been prepared and the committee members have been supplied with smaller county maps. The various attendance units have been indicated on the maps and the residences of the pupils have been marked. Information has been tabulated for the committee so that all members may have information concerning all present districts. A one-district plan for the county has been suggested to the committee and is being studied. Other proposals are also being presented and will be studied. Meetings are being held in various communities to explain the objectives of reorganization and to discuss some of the proposed plans. The committee is giving full consideration to the several plans suggested.

#### School Planning Committee

R. E. Sidney, Bellvue, Chairman; Foster Lawson, Livermore, Vice-Chairman; Frank I. Irwin, Ft. Collins, Secretary; Edna Kroh, Loveland; Ross Nutter, Ft. Collins; Ted Dunning, Red Feather Lakes; Dr. Hayde W. Crowell, Estes Park; Victor Beebe, Loveland; Gus Abrams, Berthoud; Lola Case, Bellvue; Jack Goodwin, Livermore; Elon Henander, Wellington; Wilfred Meining, Berthoud; Howard Hargrove, Timmath.

#### LAS ANIMAS COUNTY

The county school planning committee was organized May 18, 1957 and has met monthly and oftener when necessary. Various proposals have been presented to the committee suggesting six district plans, three district plans and a plan calling for one district for the county. Data concerning the several plans has been assembled and studied by the committee. Some public meetings have been held to discuss the plans as related to the several areas of the county. Tentative approval of the six district plan was voted by the committee and detailed plan of the south west area called the "Primero Plan" was filed with the county superintendent and submitted to the State Department of Education for approval and/or suggestions. The plan was returned with some suggestions which are being considered by the committee. Plans for the Aguilar area and the Hoehne area are being studied. Further study is being made of other plans.

### School Planning Committee

Dr. A. A. Larden, 821 Ash St., Trinidad, Chairman; John Myers, Hoehne, Vice-Chairman; Harry C. Raye, Trinidad, Secretary; Frank Bennett, Valdez; Don Berg, Star Route, Trinidad; Mrs. Mary Bolling, Thatcher; John Johnson, Coke-dale; Richard Loudon, Branson; Alex Olguin, Model; Lloyd Romero, Segundo; Mr. R. L. Rose, Villegreen; Mr. G. M. Russell, Kim; Adolph Sebben, Sopris; Don Smith, Aguilar; Louis E. Torres, Weston; August Zamborelli, Sopris.

### LINCOLN COUNTY

The County School Planning Committee was organized June 19, 1957 and is meeting once a month. Maps are being prepared and information is being collected as a part of the study phase. Some meetings have been held in school districts to discuss the objectives of reorganization. Consultants from the State Department of Education have met with the committee.

### School Planning Committee

Jess C. Christenson, Limon, Chairman; Jack H. Gose, Arriba, Vice-Chairman; Jennie Summers, Hugo, Secretary; H. C. Mowry, Hugo; Vern R. Jones, Arriba; Leslie Hodgson, Karval; Cecil Stone, Karval; Edward L. Anderson, Rush; James O. Bevans, Rush; Ben H. Marshall, Hugo; Roy M. Andersen, Genoa; Wm. A. Cullen, Boyero; Enar Johnson, Genoa; R. S. Barger, Ordway.

### LOGAN COUNTY

The County School Planning Committee was organized May 25, 1957 and has held regular meetings each month as well as several special meetings. A large map is being prepared of the county and studies have been made of the school and pre-school population of the entire county. Surveys of present school districts and school facilities have been made in cooperation with the district boards. The committee visited all of the schools in the county and recorded notes on the school plants and sites. Information concerning costs per pupil, valuations, district levies, costs of transportation, bonds outstanding, etc., were made available to the committee. Consultants from the State Department of Education have met with the committee in an open meeting at which many board members of the county were present. Proposals as to possible district plans are to be considered by the committee after a thorough study has been made.

### School Planning Committee

Marguerite Donovan (Mrs.), Padroni, Chairman; Elna Hagemeyer, Fleming,



Vice-Chairman; Mr. Griffith Ramey, Sterling, Secretary; William Owen, Proctor; Everett Dawson, Sterling; W. C. Ramey, Sterling; Dean Gillham, Peetz, Edward Dermer, Merino; Keith Nelson, Fleming; Mrs. Inez Busig, Sterling; Arden Smith, Sterling; Lenard Koester, Padroni; Alva Harms, Fleming; Jack Dix, Haxtun.

#### MESA COUNTY

Although Mesa County was completely reorganized under the provisions of Article 8, Chapter 123, Colorado Revised Statutes 1953, joint district situations with neighboring counties caused the county to form a committee on a standby basis. To date, no report has been made by this committee.

#### School Planning Committee

William J. Whatley, DeBeque, Chairman; Preston Walker, Grand Junction, Vice Chairman; Lucile H. Mahannah, Grand Junction, Secretary; Arch Tilton, DeBeque; John Hill, Collbran; Herb Bacon, Grand Junction; Ed Voss, Grand Junction; Max Osborn, Fruita; Don Rait, Mesa; Tom Young, Collbran.

#### MINERAL COUNTY

Since Mineral County is a county having only one school district embracing the entire area of the County, it was excused from forming a school planning committee.

#### MOFFAT COUNTY

The County School Planning Committee was organized May 31, 1957 and has been meeting once a month. The members are adding the details and spotting the schools and residences of pupils within their respective areas. The secretary has supplied information concerning each district as to valuation, mill levy, income, expense, etc. Proposals to be considered are: county-unit plan, three-district plan, four-district plan, and six or more district plan. Conditions pointing to one or more joint district plans with adjoining counties are to be considered by the committee. The committee has considerable expense for each meeting as two or more members must travel over 150 miles to attend.

### School Planning Committee

Anna Maudlin, Lay, Chairman; Gilbert Myers, Hamilton, Vice-Chairman; June Sweeney, Craig, Secretary; Don VanFassel, Craig; Dorothy Osborn, Hamilton; Harry Durham, Jr., Axial; Gilbert Williams, Slater; Bob Terrill, Rock Springs, Wyoming; Don Beckett, Craig; Fly Buffman, Greystone; Ray M. Freeman, Craig; Dr. Ray Witham, Craig; Guy R. Ramsey, Elk Springs; Bill Jordon, Craig.

### MONTEZUMA COUNTY

The County School Planning Committee was organized May 27, 1957 and has tried to meet twice each month. Studies are underway of the school enrollment by districts and of the valuation, levies, transportation problems, etc., of all the districts of the county. The problem of transportation has been given considerable study. The increasing population in the Cortez area is being studied. A meeting was held with the Dolores county committee to consider a joint district proposal. No action was taken. Suggested plans for districts which are before the committee are: a county unit plan and a plan to form three districts in the county.

### School Planning Committee

Charles McAfee, Lewis, Chairman; Eldon Zwicker, Cortez, Vice-Chairman; Claire J. Watson, Cortez, Secretary; Irwin Matlock, Cortez; Loras Tangren, Dolores; Wayne Rogers, Dolores; Russell Hindmarsh, Dolores; Byron Pyle, Towaoc; M. W. Wolff, Dolores; Violet Garrison, Cortez; Paul Wilson, Yellow Jacket; Wayne Bauer, Mancos; Wetsel Allen, Mancos; Ben Cummings, Yellow Jacket.

### MONTROSE COUNTY

The county school planning committee was elected May 20, 1957 and organized by electing officers at the meeting held in June 1957. Each member of the committee has a map of the county showing the location of all school houses, roads and other physical data. Since the members from the West end of the county must travel more than a hundred miles to attend a committee meeting it is difficult for some to attend regularly. Since the committee was at a loss as to how to proceed, it was very helpful to have a consultant from the State Department of Education meet with our committee in August.

Since our members are so very busy, we have omitted our September and October meetings. At our November 18th meeting a possible reorganization of the county into three districts was discussed. More study of this plan is needed by the committee.

### School Planning Committee

Frank D. Linsay, Montrose, Chairman; Chester Hicks, Olathe, Vice-Chairman; Lilian B. Cromie, Montrose, Secretary; Keith Kinsey, Montrose; Farrell Hawk, Cimarron; Guy Mock, Montrose; Charles Proctor, Paradox; Jane Novack, Naturita; Lyle E. Cantwell, Uravan; Glenn D. Neesham, Nucla; Yates M. Tabor, Oathe; Mrs. Wayne Cash, Delta; Robert Hill, Olathe; Leonard G. Orme, Montrose.

### MORGAN COUNTY

Our county school planning committee was organized June 21, 1957 and has met at least once a month since that time. The committee has visited all schools of the county to study the facilities, transportation, equipment, curriculum, and most urgent needs. The committee held meetings with the Adams county committee to consider the possibility of a joint district. The problem of transportation in relation to high school attendance centers is being studied. Detailed information has been made available to the committee as to the school enrollment of present districts by grades, district levies, valuation and cost per pupil.

### School Planning Committee

Raymond Fries, Brush, Chairman; Elmer G. Tieman, Ft. Morgan, Vice-Chairman; Marian Lockwood, Ft. Morgan, Secretary; Harvey Bolinger, Brush; J. W. Canatsey, Weldona; A. A. Christensen, Brush; Leonard M. Morse, Wiggins; Homer Mortensen, Brush; David Neb, Jr., Ft. Morgan; Alfred L. Olson, Brush; Edward Pumphrey, Jr., Ft. Morgan; Hazel Samples, Hillrose; Alva D. Watson, Ft. Morgan; Scott R. Wolever, Snyder.

### OTERO COUNTY

The county school planning committee was organized July 19, 1957 and has been meeting about every six weeks. Large maps of the county are being prepared showing roads, residence of pupils, and the school attendance centers. Meetings are planned with committees of adjoining counties to consider some joint district possibilities. The committee is studying the problem seriously.

### School Planning Committee

George L. Strain, La Junta, Chairman; Warren Shelton, Swink, Vice-Chairman; Ruth R. Lytle, La Junta, Secretary; Herbert Breitenfeld, Rocky Ford; Lloyd Iabore, Fowler; J. C. Thompson, Timpas; Mrs. Elizabeth Piper, Manzanola; W. H. Holmes, La Junta; LaVern L. Stahly, Fowler; Vern Campbell, Rocky Ford; L. C. Ridenour, La Junta; Herman Heatwole, La Junta; Dr. B. F. Boltz, Rocky Ford; Nathan Schlegel, Rocky Ford.

## OURAY COUNTY

The county school planning committee was organized June 26, 1957 and is considered in the status of a standby committee. The committee submits the following statement:

"Three years ago the school district of Ouray County were reorganized in accordance with the Reorganization Law in effect at that time. The reorganization Committee made a thorough study of the educational needs of the county at that time and the reorganization plan was approved by an overwhelming majority of the taxpaying electors. The school district set-up now in use has worked out to the satisfaction of all concerned. The present school district plan of Ouray County should be allowed to continue, as is, until conditions in the county should change sufficiently to warrant a change in the school districts.

Any further consolidation at this time would have the following disadvantages:

1. It would be necessary to maintain attendance centers at present locations for grade school pupils.
2. Neither the Ouray nor the Ridgway high school plants are sufficiently large for either school building to be used as a consolidated county high school.
3. To have a consolidated county high school would require the construction of a new building.
  - a. There are no suitable sites in either Ouray or Ridgway.
  - b. A site between the two towns would present problems of adequate water, fire protection, etc.
  - c. A site between the two towns would require that every high school student in the county be transported.
    - (1) Transportation of all students would result in much unnecessary expense.
    - (2) Transportation of all students would seriously hamper the entire activities program.
  - d. The economic situation in the county is very pessimistic at the present time, due to extremely low metal prices in the mining district and low agricultural returns in the ranching districts.
4. To have a county high school under one board of education, with the necessity of maintaining two attendance centers, would revert to the old system (done away with under Reorganization), which caused so much bitterness and dissension between Ouray and Ridgway.
5. Winter conditions prevail throughout most of the school year and transportation of students presents serious problems due to road conditions.
6. No plan, calling for any further consolidation of the school districts

in Ouray County, has any chance of being approved by the voters at this time. Sentiment in the county is strongly in favor of maintaining School Districts R1, R2, and R.Jt. 39 as they are at present.

In conclusion, the Planning Committee feels that, in view of the unsettled economic conditions, we cannot in good conscience propose any plan which would cost the taxpayers more money and not improve the educational opportunities for the children of Ouray County."

In this report the committee has indicated a readiness to work with the Montrose county committee in considering a joint district problem.

#### School Planning Committee

Mrs. Jean Wise, Ouray, Chairman; Andrew Soderquist, Montrose, Vice-Chairman; Evelyn F. Bates, Ouray, Secretary; Wm. Stark, Ouray; Mrs. Kathryn Hammond, Ouray; Wallace Worley; Ridgway; Glen Israel, Ridgway; Jerald Perotti, Ridgway; Orville Calloway, Montrose; Leon Comerer, Montrose.

#### PARK COUNTY

The county school planning committee was organized June 26, 1957 and has about every two months since that time. A tentative map of proposed redistricting was prepared for each committee member. This plan would form three districts as presently proposed. Studies of the proposed districts are being carried on by sub-committees and by the whole committee. A consultant from the state department met with the committee and the school boards of the county on November 22 and explained some of the problems confronting the county planning committee.

#### School Planning Committee

Victor Baker, Fairplay, Chairman; R. J. McHale, Hartsel, Vice-Chairman; Edith Ter, Fairplay, Secretary; W. A. Chapman, Pine; Lee Wallace, Jefferson; Mrs. Mary Galloway, Alma; Earle S. Cooper, Hartsel; Gerald Kelley, Hartsel; Don Hamilton, Como; J. L. Settele, Fairplay; Jack Smith, Lake George; Mrs. Nettie Witherspoon, Guffey; E. A. Schattinger, Jefferson; George A. West, Guffey.

#### PHILLIPS COUNTY

The county school planning committee was organized June 28, 1957 and met irregular schedules throughout the summer. Maps are being prepared for the committee and some study problems are being set up. Four members of the committee attended the statewide conference of committee chairmen and secretaries.

### School Planning Committee

Keith Ham, Holyoke, Chairman; Philip Ruch, Haxtun, Vice-Chairman; Earlean F. Jung, Holyoke, Secretary; Merle Bennett, Holyoke; Dale Colglazier, Holyoke; Rex Edwards, Haxtun; Harold Firme, Holyoke; Robert Grauburger, Haxtun; Ivan Knode, Haxtun; Clarence Kuhnke, Holyoke; Reinhold Radtke, Amherst; Glen E. Stenson, Holyoke; G. Ralph Thompson, Holyoke.

### PITKIN COUNTY

The County School Planning Committee was organized July 17, 1957 and has met regularly. County maps have been prepared and surveys by sub-committees are being made. No proposals have been discussed pending discussions of joint district situations with adjoining counties. A consultant from the State Department of Education has met with the committee.

### School Planning Committee

George Maurin, Snow Mass, Chairman; Mrs. Olive Mecham, Aspen, Vice-Chairman; Mrs. Lettie Lee Brand, Aspen, Secretary; Stanley Natal, Woody Creek; Sam Hewell, Aspen; James Crowley, Meredith; Floyd Beard, Carbondale; John Arbouey, Carbondale; Stanley Usel, Basalt; Steve Knowlton, Aspen; Mrs. Orveta Clayton, Carbondale; Arthur Trentaz, Aspen.

### PROWERS COUNTY

The county school planning committee was organized June 4, 1957 and has been meeting about once each month. Maps have been prepared showing present districts, union high school districts, school houses, residents of districts, highways, etc. Pupil population by districts and valuation and district levies are being studied. Have requested Bent county to consider joint district situation of District R-13. Much further study is contemplated before redistricting plans can be proposed.

### School Planning Committee

Charles Kendall, Lamar, Chairman; Darrell Perdue, Lamar, Vice-Chairman; Reva Davidson, Lamar, Secretary; J. Gerald Allmendinger, Wiley; William Dodge, Granada; George R. Durham, Bristol; Guy Eads, Lamar; Carl S. Harper, Holly; Jim Long, Lamar; Hugh L. Manning, Holly; Wilford O. Randle, Hartman; Robert D. Rose, Lamar; James O. Steen, Lamar; Clark Tuck, Granada.

PUEBLO COUNTY

The County School Planning Committee was organized June 18, 1957 and has not met regularly as it is a standby committee and will act chiefly in two joint district situations.

Information on S. B. 385 is in the hands of the Committee.

School Planning Committee

Names not submitted.

RIO BLANCO COUNTY

The county school planning committee was elected in June 1957, but was not organized by election of chairman and vice-chairman until our October 21st meeting. Studies are being made of a two district plan for the county. Committee members are working on these proposals in their districts.

School Planning Committee

Richard Lyttle, Meeker, Chairman; Mrs. Dorothy Barrett, Meeker, Secretary; Victor Charles, Meeker; Mrs. Edna Winslett, Meeker; Roderick Danielson, Rangely; Bernard Yeager, Rangely; William Brennan, Rio Blanco; Mrs. Alice Jacobs, Meeker; Robert Fulton, Meeker; Mrs. Katherine Rector, Meeker; Mrs. Eileen Eisaquirre, Rio Blanco.

RIO GRANDE COUNTY

The school planning committee was organized for Rio Grande County July 1, 1957 and will act as a standby committee. The districts of the county were reorganized under H. B. §900 and no further change is proposed at present. The Committee will cooperate with adjoining counties on any proposed plans affecting joint districts.

School Planning Committee

John M. La Rue, Monte Vista, Chairman; Robert P. Burns, Vice-Chairman; Mary M. Stone, Monte Vista, Secretary; Barnett Bauer, Del Norte; George R. Benton, Monte Vista; Robert L. Clare, Monte Vista; Cory C. Cook, Del Norte; Lloyd Kinser, Center; Octyle P. McDonald, Monte Vista; Orval J. Schall, Monte Vista.

## ROUTT COUNTY

The county school planning committee was organized May 28, 1957 and has been meeting about once each month. Maps of the county and studies of the present districts as to census, valuation, existing schools, transported pupils, etc., have been prepared by the secretary for all committee members. Studies are being made of proposed one district plan and also of a proposed three district plan. There are some problems of joint districts with adjoining counties. A consultant from the State Department of Education has met with the committee to help outline some of the problems that must be studied before a satisfactory plan may be submitted.

### School Planning Committee

Marvin Brown, Steamboat Springs, Chairman; James B. Home, M.D., Hayden, Vice-Chairman; Geraldine Elkins, Steamboat Springs, Secretary; Louis Rossi, Oak Creek; Wilbert Murphy, Hayden; Walter Buchanan, Oak Creek; Edward Hinman, Yampa; Victor Morton, Mount Harris; J. B. Willcockson, Phippsburg; Glenn Barber, Oak Creek; E. S. Fetcher, Steamboat Springs; J. Earl Ray, Toponas; William Bruchez, Oak Creek; Ralph Rutherford, Mount Harris.

## SAGUACHE COUNTY

The County School Planning Committee was organized May 17, 1957 and will meet once a month beginning in November. Maps are being prepared. Other than discussing possibility of joint district situations no proposals have been discussed. There are only two districts in the county other than those subject to these joint proposals.

### School Planning Committee

H. E. Versaw, Center, Chairman; George Dominick, III, Villa Grove, Vice-Chairman; Myra L. McClure, Saguache, Secretary; Jim Curtis, Jr., Saguache; Henry Lamm, Moffat; George White, Moffat; Bernard Irby, Sargents; Grant Edwards, Center; Don Myers, Center; Ernest Watters, Gunnison.

## SAN JUAN COUNTY

Since San Juan County is a county having only one school district embracing the entire area of the county, it was excused from forming a school planning committee.



## SAN MIGUEL COUNTY

The committee was organized June 6, 1957. It has met regularly since its formation. It has under consideration one-district and three-district plans for the county. It has joint district situations with Dolores county and also with Montrose county. No agreement has been reached with these neighboring counties. State Department of Education consultation was furnished this committee August 21, 1957.

### School Planning Committee

Richard Stevens, Telluride, Chairman; Mrs. Bertha Albin, Placerville, Vice-Chairman; Irene M. P. Wichmann, Telluride; Everett Schmid, Placerville; S. J. Oberto, Telluride; E. E. Foster, Ophir; Harold Joseph, Norwood; E. Netherton, Redvale; Sam Hankins, Egnar.

## SEDGWICK COUNTY

The County School Planning Committee was organized May 27, 1957 and has met regularly once a month. County maps are being prepared and the committee is conducting surveys.

In solving the joint district situation with Phillips county the committees are to meet together.

No proposals have been discussed by the committee as yet.

### School Planning Committee

Runyon Race, Ovid, Chairman; Milton Schuler, Julesburg, Vice-Chairman; Veta Stalcup, Julesburg, Secretary; Elton O'Dell, Julesburg; Arthur Marquardt, Julesburg; Dick Matoush, Julesburg; B. H. Bonesteel, Julesburg; Wm. Engelker, Ovid; Clem Price, Sedgwick; Max Fulscher, Amherst; Elizabeth Zorn, Julesburg; J. H. Marquardt, Venango, Nebraska; Edwin Jacobson, Julesburg; Richard Dittmore, Julesburg.

## SUMMIT COUNTY

The county school planning committee was organized May 24, 1957 and set Thursday as the night for regular meeting whenever called. The committee has met about every three weeks. The committee members located all school and pre-school children on the maps of the county and the secretary compiled information as to school enrollment by grades, valuation, and school levies of all

present districts. Road conditions were studied as they may affect transportation of pupils.

A plan was proposed forming one district for the county, excepting a small portion to the north that is released to the West Grand reorganized district and which was accepted by them as a part of their plan. Preliminary outlines of the plan were discussed with a consultant of the State Department of Education and meetings were held in various parts of the county to explain the plan. The revised plan was submitted to the Commissioner of Education and it was approved. The new district is to be known as the "Summit School District" and is to be given the number "Re-1". It is to have a board of six members and six director districts have been designated. All twelve grades are to be under the new district board and administration. The present six elementary districts and the county high school district are to be disbanded at the completion of the present school year June 30, 1958, and the new director and administration to take complete charge July 1, 1958.

Final hearings are to be held on the plan in December and the voting on the plan is set for early in January, 1958.

#### School Planning Committee

W. Walter Byron, Kokomo, Chairman; Karl H. Knorr, Dillon, Vice-Chairman; John R. Bailey, Breckenridge, Secretary; Brown Frank, Breckenridge; Kenneth V. Cladwell, Frisco; Ruth D. Knorr, Dillon; Virginia Portervield, Frisco; Leland Sharp, Montezuma; Earl Smith, Kremmling; Lorenz Valaer, Dillon.

#### TELLER COUNTY

The County School Planning Committee was organized May 27, 1957 and did not meet July thru October but resumed meeting monthly in November. A consultant of the State Department of Education met with the committee in November and gave the members a more understanding picture of what is before them and how to proceed.

Maps of the county are being prepared and committee members are interviewing patrons of districts and getting their suggestions.

Discussions indicate committee favors two districts in county, as natural geographic division favors this arrangement. A county unit plan is favored by some as the only method of equalizing valuation per pupil.

Transportation poses a problem. Some fear small children will be transported too far. Assurance that necessary attendance centers will be maintained should help this situation.

There are joint situations to be worked out with Park county and possibly with Douglas county also.

"Since the committee has found out that the state is not going to strong-

arm any of the members, the attitude is more cooperative. It is difficult to convince independent people that coercion is for them."

#### School Planning Committee

Jon VanDerwalker, Victor, Chairman; David R. Hall, Victor, Vice-Chairman; Loretta Surber Davis, Cripple Creek, Secretary; Eugene Carico, Guffey; Mrs. Dorothy Erb, Florissant; Lee Hermann, Woodland Park; Sam Nikkel, Cripple Creek; H. L. Schneider, Colorado Springs; Wayne Snare, Florissant; Robert A. Wilson, Victor.

#### WASHINGTON COUNTY

The county school planning committee was organized July 3, 1957 and has meeting once each month. One large map has been prepared showing school data for the county and each committee member has a small map on which to enter results of studies made. The data sheets have been completed showing comparative information for the school districts.

#### School Planning Committee

L. A. Rhoades, Yuma, Chairman; J. V. Cannady, Flagler, Vice-Chairman; Gertrude W. Moore, Akron, Secretary; Robert C. Diamond, Akron; Charles E. Atkins, Merino; W. A. Brower, Jr., Otis; Blaine Maggard, Akron; Oscar Higgason, Cope; Carl Easter, Elba; Harry Shedd, Akron, Jay Wyckoff, Genoa; Florian Gebauer, Akron; Edwin Hood, Woodrow; F. K. Colpitts, Anton.

#### WELD COUNTY

The county school planning committee was organized June 22, 1957 and has held at least one meeting per month. Maps of Weld county school districts were prepared with one large wall map for the county superintendent's office. A questionnaire was prepared and distributed. The returns were tabulated. The committee has visited various schools in the county. Sub-committees have been studying various areas of Weld county and have made an effort to get the opinion of the people in the areas. Contrasting conditions of heavily populated irrigated areas and sparsely populated dry farming and range areas pose a serious problem. Expenses of the committee are heavy since the committee is so widely scattered. The \$500 allowed is only about one-fourth of the anticipated costs. Consultants of the State Department of Education have met with the committee. Studies are to be continued and time will be needed to acquaint the people with the needs to reorganize on a satisfactory basis.

School Planning Committee

David D. Hill, Greeley, Chairman; J. Thane Turner, Nunn, Vice-Chairman; Paul N. Lodwick, Greeley, Secretary; Sheldon D. Brooks, Johnstown; Wayne Norman, La Salle; Tom J. Nix, Eaton; George H. Bush, Keenesburg; Wilbur Thomas, Carr; Glenn Cowley, Grover; Harold L. Olander, Longmont; James L. Johnson, Brighton; A. J. Campbell, Cornish; Harry A. Pippin, Keenesburg; Percy P. Odle, Kersey; George Lindblad, Windsor; Arthur K. Anderson, Greeley.

YUMA COUNTY

The County School Planning Committee was organized June 2, 1957 and met about every six weeks through the summer and fall and oftener in the winter months. Maps of the school districts of the county have been prepared and information has been assembled as to the census and school enrollment by grades in each operating district. Data concerning financial status of districts together with the costs per pupil, costs for transportation, length of bus routes, etc., has been made available to the committee. Plans proposed and now under study are:

- a) one district for the county
- b) two districts for the county

There are problems concerning joint district situations to be adjusted when the committee meets with committees of adjoining counties. A consultant from the State Department of Education met with the committee in December.

School Planning Committee

Marion Hutton, Kirk, Chairman; Dr. G. T. Good, Yuma, Vice-Chairman; Herbert Oman, Wray, Secretary; Dr. Lawrence D. Buchanan, Wray; Don Korf, Yuma; Gordon Sipple, Haxtun; Robert Schmidt, Yuma; Ray Gelvin, Wray; Marie Kramer, Wray; Elbert Zion, Vernon; Edgar Lengel, Burlington; A. H. Gurs, Kirk; Robert Jones, Laird; Wilson Elliott, Idalia.

SECTION III

A P P E N D I C E S

Committee Meeting Schedules

Purposes of Senate Bill 385

Planning Committee Study Function

County Map Instructions

Step-by-Step Organization Procedure

Commissioner's Letter No. 1

Summary Tabulation, Committee Expenses

Number of School Districts by Class

Statewide Meeting of County School  
Planning Committees



DATES ON WHICH CONSULTANTS MET WITH THE  
SCHOOL PLANNING COMMITTEE AND/OR CONFERRED  
WITH THE OFFICERS

Adams	6/27/57; 9/13/57	Lincoln	10/1/57
Alamosa	11/1/57; 11/12/57	Logan	11/15/57
Arapahoe	8/20/57; 10/20/57	Mesa	-----Standby
Archuleta	9/26/57	Mineral	xxxxxxxx
Baca	11/5/57	Moffat	9/30/57
Bent	10/30/57	Montezuma	8/6/57; 11/9/57
Boulder	7/22/57	Montrose	8/22/57
Chaffee	7/6/57; 11/9/57	Morgan	7/12/57
Cheyenne	10/19/57; 11/21/57	Otero	6/19/57
Clear Creek	11/26/57	Ouray	8/20/57--Standby
Conejos	11/12/57	Park	11/22/57
Costilla	11/13/57	Phillips	10/22/57
Crowley	8/15/57	Pitkin	10/23/57
Custer	6/20/57	Prowers	11/19/57
Delta	xxxxxxxx	Pueblo	-----Standby
Denver	xxxxxxxx	Rio Blanco	10/22/57
Dolores	8/8/57; 11/9/57	Rio Grande	7/29/57
Douglas	12/11/57	Routt	9/11/57
Eagle	8/12/57; 10/23/57	Saguache	11/20/57
Elbert	11/26/57	San Juan	xxxxxxxx
El Paso	10/10/57	San Miguel	8/21/57
Fremont	6/20/57	Sedgwick	10/23/57
Garfield	6/26/57; 11/20/57	Sunmit	10/24/57; 11/26/57
Gilpin	11/25/57		12/11/57
Grand	7/11/57; 8/23/57	Teller	11/9/57
Gunnison	6/23/57; 11/21/57	Washington	8/11/57
Hinsdale	6/24/57; 9/16/57	Weld	7/17/57
Huerfano	9/9/57; 11/8/57	Yuma	12/11/57
Jackson	9/12/57		
Jefferson	xxxxxxx		
Kiowa	11/5/57		
Kit Carson	10/2/57		
Lake	11/25/57		
La Plata	7/8/57		
Larimer	7/10/57; 11/13/57		
Las Animas	7/6/57; 10/8/57		
	12/12/57		

xxxxxxxx These counties have no committees.

THE SENATE HAS CONSIDERED THIS BILL  
ON MARCH 15, 1955  
AND HAS PASSED IT  
WITH THE FOLLOWING AMENDMENTS

SEVEN PURPOSES OF SENATE BILL 385

1. Equalization of benefits and burdens of education throughout the state
2. Provide for organization of school districts in the state
3. Alteration of established boundaries
4. Generally to enlarge the areas of school districts in order to provide for maintenance of a thorough and uniform system of free public schools
5. Provide high school education
6. Make possible a higher degree of tax rate uniformity among districts
7. Wiser use of school funds



Each committee should prepare, or cause to be prepared, a map which will show at a glance the following facts:

1. The location of all school houses in the county, including those now in use and those which are abandoned.

2. The number of teachers in each school.

### THE STUDY FUNCTION OF THE COUNTY SCHOOL PLANNING COMMITTEE

In carrying out the legal provisions previously listed in the manual it is the feeling of the State Department of Education that until the school planning committee has made itself thoroughly acquainted with the best facts obtainable upon which to base its conclusions, the committee is not ready to evaluate any proposals for establishment of boundary lines for a proposed new district.

Therefore, the first thing that the committee should undertake is a careful and thorough study of the schools now in operation within the county, the location of the children with reference to the schools, and the educational services which those schools are rendering the children.

It is the intent of this part of the manual to assist the committee in making this kind of a study.

## THE COUNTY MAP

Each committee should prepare, or cause to be prepared, a map which will show at a glance the following facts:

1. The location of all school houses in the county, including those now in use and those which are abandoned.
2. The number of teachers in each school.
3. The number of grades being taught in each school.
4. The number of pupils enrolled in that school as of the close of school at the end of the 1956-57 school year.
5. The roads of the county, with a clear indication as to the quality of each road (i.e., whether it is paved, graveled, not maintained, etc.).
6. The location of the railroads of the county.
7. The location of creeks, rivers, mountain barriers, or other topographical features which might affect school operation. Impassable barriers should be clearly delineated.
8. In the sparsely settled areas of the county, each child's residence should be located, and a symbol affixed, indicating whether the child is enrolled grades K-6, 7-9, 10-12. It is not necessary to locate each child in the thickly populated centers where transportation to and from school is not a major problem.

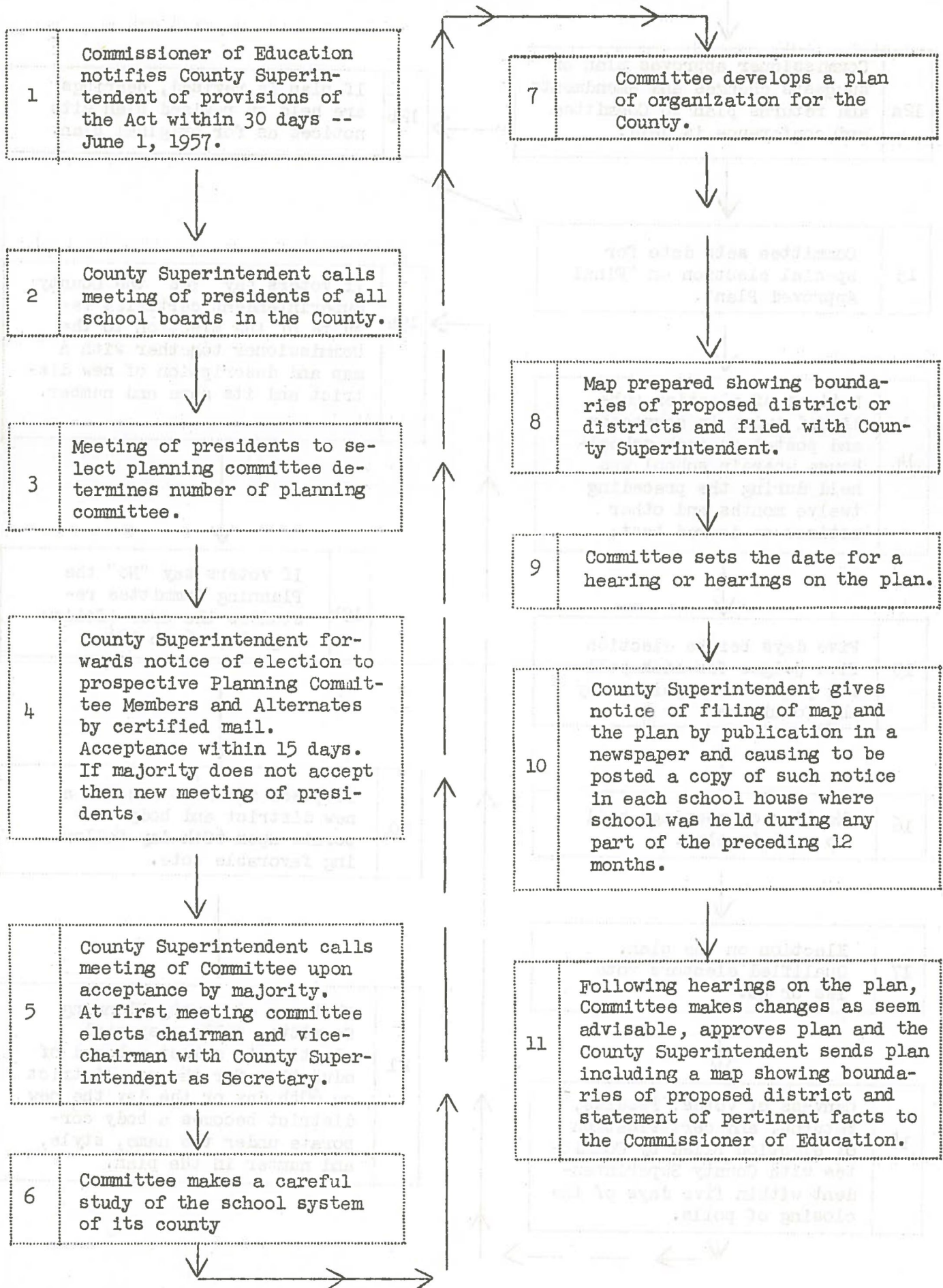
The half-inch scale maps furnished by the Planning and Research Division of the Colorado State Highway Department, 4201 E. Arkansas Avenue, Denver, Colorado, may be obtained at the nominal cost of 25¢ to \$1.00 per county, depending upon the number of sheets necessary for each county's map, and are quite adequate for the committee's purposes. These maps may also be obtained in one-inch scale at considerably higher cost. The maps should not show present school district boundary lines.

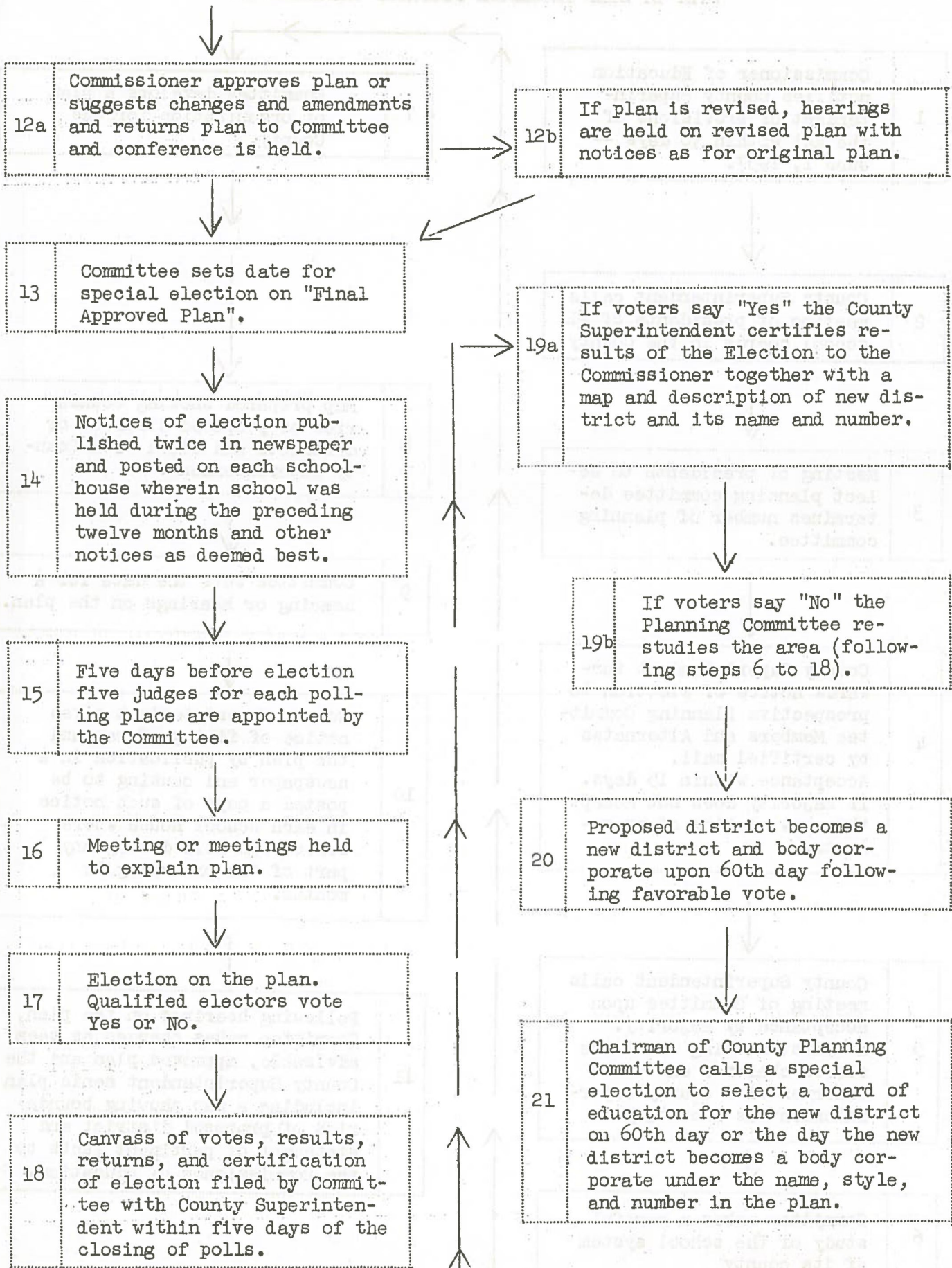
The maps should be mounted upon a sheet of cork-board, plywood, or some similar material which will retain map-tacks well, if they are used. Celotex may be used, but does not hold tacks very well if the map is moved often.

The "Legend" page of the manual gives suggestions as to symbols which may be used to depict easily the above-mentioned facts.

The assistance of school people in the community may be enlisted in locating the children on the map, or persons who have assisted in the taking of the school census may have the necessary information.

STEP BY STEP PROCEDURE DISTRICT ORGANIZATION





DEPARTMENT OF EDUCATION

State Office Building  
Colfax and Sherman  
Denver 2, Colorado

May 3, 1957

Letter No. 1  
Re: BULLETIN NO. 1  
SENATE BILL NO. 385

TO: COUNTY SUPERINTENDENTS

FROM: H. GRANT VEST, State Commissioner of Education

SUBJECT: SENATE BILL NO. 385

Attached to this communication you will find the following:

I. BULLETIN NO. 1 re: SENATE BILL NO. 385

This bulletin consists of instructions with reference to procedure for calling the meeting of the presidents of school boards and chairmen of the county and union high school districts for the purpose of organizing a school planning committee, which committee is authorized in Section 4 of Senate Bill No. 385 to perform any and all things reasonable or necessary to carry out the intent and purposes of this Bill.

NOTE: Any county which has only one school district embracing the entire county, or is a county in which a complete plan of reorganization under the provisions of Art. 8, Ch. 123, CRS '53, otherwise known as House Bill 900, satisfactory to the commissioner need not elect such a committee unless a majority of the school districts, or if there be but one school district then a majority of the board of directors thereof, shall request that such committee be elected.

SPECIAL NOTE: It is advisable that the county superintendent retain copies, properly dated, of all notices and certifications required under this act in a special folder.

II. SAMPLE FORM (SDR-1-57) NOTICE TO SCHOOL DIRECTORS

Note: Section 4(2) of Senate Bill No. 385 directs the county superintendent to notify the presidents of the boards of education and chairmen of county and union high school districts of the meeting to determine the number of and elect the members and alternates for the school planning committee. In order to be of assistance, this office will supply each county superintendent with these notices upon request. See sample form (SDR-1-57) attached.

III. SAMPLE FORM (SDR-2-57) NOTICE OF ELECTION TO MEMBERSHIP ON SCHOOL PLANNING COMMITTEE

Note: Since Section 4(4) of Senate Bill No. 385 directs the county superintendent to notify each member and his or her alternate of election to the school planning committee and also directs that acceptance as a

member must be returned to the county superintendent within fifteen (15) days of the date of mailing of the original notification, Form SDR-2-57 has been prepared in order to facilitate the work of the county superintendent. This office will supply additional forms upon request. See sample form (SDR-2-57) attached.

SPECIAL NOTICE: Your attention is called to that part of Section 4(4) of Senate Bill No. 385 which provides that the elected member of the school planning committee is to be notified; but if such member does not accept within 15 days from the date of mailing of the notice, then the alternate is to be notified in the same manner, and must accept within 15 days from the date of mailing of his notice. Form SDR-2-57 has been prepared so that it can be used for either the member or the alternate.

IV. SAMPLE FORM (SDR-3-57) FORM OF ACCEPTANCE OF MEMBERSHIP

Note: This is a suggested form which the elected member or alternate could use in notifying of his acceptance of election as a member of the school planning committee. It could be included in the same mailing as the Notice of Election. It must be returned within fifteen (15) days of the date on which the notification was sent. If it is not returned, the same Form (SDR-3-57) could be sent to the alternate for his signature and return within the fifteen (15) day period. Upon its return, it should be made a part of the permanent record of the work of the committee. Additional Forms (SDR-3-57) are available from this office upon request.

V. SAMPLE FORM (SDR-4-57) NOTICE TO MEMBERS OF SCHOOL PLANNING COMMITTEE OF FIRST MEETING

Note: Section 4(5) of Senate Bill No. 385 requires that upon acceptance by a majority of the members of the school planning committee, or their alternates, the county superintendent shall call a meeting of such committee to be held at such time and place as he may designate, and shall send notice thereof by certified mail to each member at least five (5) days before the date set for such meeting. Form (SDR-4-57), when properly completed, may be used for such notice. See sample Form (SDR-4-57) attached. Additional Forms (SDR-4-57) are available from this office upon request. Please retain a copy of such notification for the permanent file.

VI. SAMPLE FORM (SDR-5-57) CERTIFICATION TO COMMISSIONER OF EDUCATION OF PERSONNEL OF SCHOOL PLANNING COMMITTEE

Note: Section 8 of Senate Bill No. 385 requires the secretary of the school planning committee to certify to the commissioner the names and post office addresses of each member, indicating the chairman and vice-chairman. Form SDR-5-57 may be used for this purpose. Additional Forms (SDR-5-57) are available from this office upon request. See Sample Form (SDR-5-57) attached.

VII. SAMPLE FORM (SDR-6-57) CERTIFICATION TO COMMISSIONER OF EDUCATION OF CHANGE OF PERSONNEL OF SCHOOL PLANNING COMMITTEE

Note: Section 8 of Senate Bill No. 385 requires that any change in the personnel or officers of the school planning committee shall be likewise

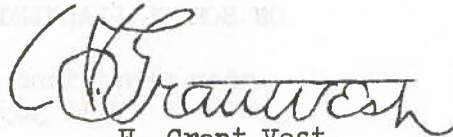
certified to the commissioner. Form SDR-6-57, a sample copy of which is attached, may be used for this purpose. Additional forms SDR-6-57 are available from this office upon request.

VIII. SENATE BILL NO. 385

Under separate cover we are sending you copies of Senate Bill No. 385 like the one herewith attached so that each school board president and chairman of county or union high school committee may be supplied with one. Additional copies of Senate Bill No. 385 will be sent from this office upon request. A request sheet is also attached for your convenience in asking for additional copies of these materials above mentioned.

A careful reading of all the provisions of S.B. 385 and the instructions here included is strongly recommended. Other communications concerning S.B. 385 will be sent to you from time to time.

Signed,



H. Grant Vest

State Commissioner of Education

\* \* \* \*

Form SDR-1-57  
S. B. 385

Notice to School Director

Concerning the calling of the meeting for the purpose of electing a "SCHOOL PLANNING COMMITTEE" as provided in "THE SCHOOL DISTRICT ORGANIZATION ACT OF 1957".

(Senate Bill 385 enacted into law May 1, 1957)

To the Presidents of the Boards of Education of all school districts and the Chairmen of all County and Union High School Districts within the County of \_\_\_\_\_ in the State of Colorado: --

You are hereby notified that a meeting will be held at the hour of \_\_\_\_\_ on \_\_\_\_\_ the \_\_\_\_\_ day of \_\_\_\_\_ 195\_, at the place of \_\_\_\_\_,

for the purpose of creating a "School Planning Committee" and establishing the number of members thereof; and of selecting, by nomination and secret ballot, such members and an alternate for each such member, all pursuant to and in conformity with Section 4 of "The School District Organization Act of 1957" (Senate Bill 385 enacted into law May 1, 1957).

Your presence is requested under the provisions of the statute above referred to, but in the event the president of any board of education or chairman

of any county or union high school district cannot personally attend said meeting it is his duty under said Act to designate, in writing, a member of his board or committee as his proxy, who shall have the same rights as said president, or chairman, if attending personally.

\_\_\_\_\_  
County Superintendent of Schools

Date \_\_\_\_\_

\* \* \* \*

Form SDR-2-57  
S. B. 385

NOTICE OF ELECTION TO MEMBERSHIP  
ON SCHOOL PLANNING COMMITTEE

under provisions of Senate  
Bill 385

\_\_\_\_\_, 195\_

To: \_\_\_\_\_  
Name of Member

To: \_\_\_\_\_  
Name of Alternate

\_\_\_\_\_  
Address

\_\_\_\_\_  
Address

You are hereby notified that, at a meeting of the Presidents of the Boards of Education and the chairmen of the County and Union High School Districts within the County of \_\_\_\_\_ in the State of Colorado, held at \_\_\_\_\_ on the day of \_\_\_\_\_, 1957, you were elected a member, or an alternate for a member, of the "School Planning Committee" of said county under Section 4 of "The School District Organization Act of 1957" (Senate Bill 385, approved May 1, 1957).

The duties of said "School Planning Committee" under said statute are as follows:

The making of a careful study of the public school system in its county; to cooperate with the state board and the commissioner in arriving at a plan of organization of school districts within said county; to pass upon and recommend any plan for the organization of the school districts in said county, or portion thereof; to call for an election, or elections, to vote upon such plan as provided herein; to make arrangements for such election; to assist in the dissemination of information to the electors of the proposed district, or districts, as to the purpose and benefits of such proposed plan; to cooperate with the committee of adjoining counties in the event districts embracing two or more counties appear advisable; to make all certifications and perform all other acts specifically enjoined upon said committee by this act; in general, to do and perform all things reasonable or necessary to carry out the intent and purpose of this act and perfect an organization of the school districts within the county in conformity with the spirit of this act.



Please sign the FORM OF ACCEPTANCE given below and return to me as County Superintendent of Schools of \_\_\_\_\_ County as promptly as possible.

Note: If the FORM OF ACCEPTANCE is not signed and returned within fifteen (15) days of the date of this mailing (see date above) it is understood that you do not accept the election and your name will be dropped from the committee.

\_\_\_\_\_  
County Superintendent of Schools

of \_\_\_\_\_ County, Colorado

\* \* \* \*

Form SDR-3-57  
S. B. 385

FORM OF ACCEPTANCE

Date \_\_\_\_\_

I, \_\_\_\_\_ hereby accept the membership on the "School Planning Committee" of \_\_\_\_\_ County, Colorado, to which I was elected at the meeting held at \_\_\_\_\_ on \_\_\_\_\_, 1957, pursuant to Section 4 of "The School District Organization Act of 1957".

(Signed) _____	Member	(Signed) _____	Alternate
Address _____		Address _____	
County _____		County _____	

\* \* \* \*

Form SDR-4-57  
S. B. 385

NOTICE TO MEMBERS OF SCHOOL PLANNING COMMITTEE

Concerning the first meeting of the School Planning Committee elected under the provisions of "The School District Organization Act of 1957" (S.B. 385 enacted into law May 1, 1957)

To the members of the School Planning Committee of \_\_\_\_\_ County, Colorado: --

You are hereby notified that a majority of the members of the School Planning Committee of \_\_\_\_\_ County, Colorado, have filed

acceptances of their election as members as said committee, and by virtue of the authority vested in me in Section 4(5) of "The School District Organization Act of 1957" I herewith call a meeting of the members of said School Planning Committee to be held at \_\_\_\_\_ at the hour of \_\_\_\_\_ on \_\_\_\_\_, the \_\_\_\_\_ day of \_\_\_\_\_, 195\_.

At said meeting, the members will select a chairman and vice-chairman, and transact any other business as may properly come before the committee.

\_\_\_\_\_  
County Superintendent of Schools  
of \_\_\_\_\_ County, Colorado.

Date \_\_\_\_\_.

\* \* \* \*

Form SDR-5-57  
S. B. 385

CERTIFICATION TO COMMISSIONER OF EDUCATION OF PERSONNEL

OF SCHOOL PLANNING COMMITTEE OF \_\_\_\_\_ COUNTY, COLORADO

To The Commissioner of Education:

I, \_\_\_\_\_, the County Superintendent of Schools of \_\_\_\_\_ County, Colorado, and Secretary of the School Planning Committee of said County, do hereby certify that the following have filed acceptances in accordance with the provisions of Section 4(4) of "The School District Organization Act of 1957" (Senate Bill 385), and therefore constitute the membership of the School Planning Committee of \_\_\_\_\_ County, Colorado, and that they do live, respectively, at the following addresses:

	NAMES	ADDRESSES
1.	_____	_____
2.	_____	_____
3.	_____	_____
4.	_____	_____
5.	_____	_____
6.	_____	_____

I further certify that the chairman is \_\_\_\_\_, whose address is \_\_\_\_\_ and the vice-chairman is \_\_\_\_\_, whose address is \_\_\_\_\_.

\_\_\_\_\_  
Secretary of the School Planning Committee  
of \_\_\_\_\_ County, Colorado

Date \_\_\_\_\_

CERTIFICATION TO COMMISSIONER OF EDUCATION OF  
CHANGE OF PERSONNEL OF SCHOOL PLANNING  
COMMITTEE OF \_\_\_\_\_ COUNTY, COLORADO

To the Commissioner of Education:

I, \_\_\_\_\_, the County Superintendent of schools of \_\_\_\_\_ County, Colorado, and Secretary of the School Planning Committee of said county, do hereby certify that the following changes in personnel of the said School Planning Committee have occurred:

Name(s) and address(es) of persons whose Names Are Being Dropped from the Committee:

	Name(s)	Address(es)
1.	_____	_____
2.	_____	_____

Name(s) and address(es) of Persons Replacing the Above:

	Name(s)	Address(es)
1.	_____	_____
2.	_____	_____

Note. If this change in personnel involves a chairman or vice-chairman, please indicate:

Remarks: \_\_\_\_\_  
\_\_\_\_\_  
\_\_\_\_\_

\_\_\_\_\_  
Secretary of the School Planning Committee  
of \_\_\_\_\_ County, Colorado

Date \_\_\_\_\_

\* \* \* \*

REQUEST SHEET FORMS USED IN CONNECTION  
WITH PROVISIONS OF  
SENATE BILL NO. 385

Please send me the following quantities of forms as indicated for procedures

in connection with the provisions of S. B. 385:

Form Number	Description	Quantity
SDR-1-57	Notice to School Director	_____
SDR-2-57	Notice of Election	_____
SDR-3-57	Form of Acceptance	_____
SDR-4-57	Notice of First Meeting	_____
SDR-5-57	Certification of Personnel	_____
SDR-6-57	Certification of Change of Personnel	_____
SDR-7-57	Request Sheet	_____
S.B. 385	Copies of the Law	_____

Mailing instructions: \_\_\_\_\_  
\_\_\_\_\_

County Superintendent of \_\_\_\_\_  
County, Colorado

Date \_\_\_\_\_

\* \* \* \*

SDR-8

Voucher Prepared \_\_\_\_\_ Date \_\_\_\_\_

I N V O I C E

TO: STATE DEPARTMENT OF EDUCATION  
FROM: \_\_\_\_\_ COUNTY  
NAME: \_\_\_\_\_  
ADDRESS: \_\_\_\_\_  
DATE: \_\_\_\_\_

District Organization Fund

ITEM	AMOUNT
1. Postage .....	_____
2. Travel of Committee .....	_____
_____ Miles @ 7¢ per mile .....	_____
3. Maps .....	_____
4. Supplies .....	_____
5. Compensation of Temporary Assistants to County Supt..	_____
6. Election Expenses .....	_____

a. Judges .....

b. Notices .....

7. Other Expenses of Committee:

L I S T

a. \_\_\_\_\_  
b. \_\_\_\_\_  
c. \_\_\_\_\_  
d. \_\_\_\_\_

T O T A L \_\_\_\_\_

Approved: \_\_\_\_\_  
County Superintendent

Approved: \_\_\_\_\_  
Director of School District  
Organization

SUMMARY OF COUNTY PLANNING COMMITTEE EXPENSES

To December 10, 1957

Committee expenses to December 10, 1957

		Per cent of total cost
POSTAGE	\$ 3.25.73	9.38%
TRAVEL	2,732.68	78.67%
MAPS	208.26	6.00%
SUPPLIES	77.80	2.24%
TEMPORARY ASSISTANTS	122.65	3.53%
MISCELLANEOUS	6.51	.18%
Total	<u>\$3,473.63</u>	

Five counties were organized and no appropriation was made for these. Twenty-eight counties have reported no expense to date. One county has used within \$2.44 of its \$500 allotted.

Election expenses will be heavy when voting begins. Judges are allowed \$5.00 each or a total of \$15.00 for expenses for judges for each polling place, then there will be publication costs and other expenses connected with an election.

Total mileage reported to date is 39,038.

NUMBER OF SCHOOL DISTRICTS BY CLASS

COUNTY	FIRST CLASS 55-56		SECOND CLASS 55-56		THIRD CLASS 55-56		GAIN/ Loss		CLASS 56-57		GAIN/ Loss		TOTAL 55-56		GAIN/ Loss		C.H.S.	U.H.S.	JR. COL.	NON- OPERATING 1957
	56-57	55-56	56-57	55-56	56-57	55-56	56-57	55-56	56-57	56-57	55-56	56-57	56-57	55-56	56-57	56-57				
ADAMS	4	5	1	1	14	14	-1	0	14	14	0	0	19	19	0	0				5
ALAMOSA	1	1	-	-	11	11	-	0	11	11	0	0	12	12	0	0				5
ARAPAHOE	4	4	3	3	8	8	0	0	8	8	0	0	15	15	0	0	1			3
ARCHULETA	-	-	1	1	-	-	0	-	-	-	-	-	1	1	0	0				0
BACA	-	-	1	1	28	26	0	-2	26	26	-2	-2	29	27	0	-2				8
BENT	1	1	-	-	15	15	-	0	15	15	0	0	16	16	0	0	1			5
BOULDER	2	2	3	3	26	26	0	0	26	26	0	0	31	31	0	0				6
CHAFFEE	1	1	-	-	13	12	+1	-1	13	12	-1	0	14	14	0	0				8
CHEYENNE	-	-	1	1	6	5	0	-1	6	5	-1	-1	7	6	0	-1	1			0
CLEAR CREEK	-	-	1	1	6	6	0	0	6	6	0	0	7	7	0	0				1
CONEJOS	1	1	3	3	13	13	0	0	13	13	0	0	17	17	0	0				2
COSTILLA	-	-	1	2	10	9	+1	-1	10	9	-1	0	11	11	0	0	1			0
CROWLEY	-	-	3	3	6	6	0	0	6	6	0	0	9	9	0	0				3
CUSTER	-	-	1	1	1	1	0	0	1	1	0	0	2	2	0	0				0
DELTA	1	1	-	-	-	-	-	-	-	-	-	-	1	1	0	0				0
DENVER	1	1	-	-	-	-	-	-	-	-	-	-	1	1	0	0				0
DOLORES	-	-	-	-	8	7	+1	-1	8	7	-1	0	8	8	0	0	1			3
DOUGLAS	-	-	-	-	17	17	-	0	17	17	0	0	17	17	0	0	1			5
EAGLE	-	-	1	1	12	12	0	0	12	12	0	0	13	13	0	0	1			0
ELBERT	-	-	1	1	7	7	0	0	7	7	0	0	8	8	0	0				3
EL PASO	3	6	3	3	16	15	-2	-1	16	15	-1	0	22	22	0	0				2
FREMONT	2	2	-	-	24	20	-	-4	24	20	-4	-4	26	22	0	-4				7
GARFIELD	-	-	2	2	20	18	-1	-2	20	18	-2	-2	22	20	0	-2	1	3		7
GILPIN	-	-	-	-	6	6	-	0	6	6	0	0	6	6	0	0	1			3
GRAND	-	-	-	-	12	12	-	0	12	12	0	0	12	12	0	0	2			5
GUNNISON	-	-	1	1	20	20	0	0	20	20	0	0	21	21	0	0	1			13
HINSDALE	-	-	-	-	2	2	-	0	2	2	0	0	2	2	0	0				1
HUERFANO	1	1	1	1	24	23	0	-1	24	23	-1	-1	26	25	0	-1	1			14
JACKSON	-	-	-	-	6	6	-	0	6	6	0	0	6	6	0	0	1			1

COUNTY	FIRST CLASS 55-56		SECOND CLASS 55-56		GAIN/ Loss		THIRD CLASS 55-56		GAIN/ Loss		T O T A L 55-56		GAIN/ Loss		C.H.S.	U.H.S.	JR. COL.	NON- OPERATING 1957
	56-57	55-56	56-57	55-56	56-57	55-56	56-57	55-56	56-57	55-56	56-57	56-57	55-56					
JEFFERSON	1	1	0	-	-	-	-	-	-	-	1	1	0	0				0
KIOWA	-	-	-	1	1	0	9	9	0	0	10	10	0	0				3
KIT CARSON	-	-	-	2	2	0	13	13	0	0	15	15	0	0				4
LAKE	1	1	0	1	1	0	4	4	0	0	6	6	0	0				3
LA PLATA	2	2	0	1	1	0	12	12	0	0	15	15	0	0				4
LARIMER	2	2	0	3	3	0	27	26	-1	-1	32	31	-1	-1				3
LAS ANIMAS	3	3	0	2	3	+1	40	38	-2	-2	45	44	-1	-1	1	1	1	8
LINCOLN	-	-	-	2	2	0	18	17	-1	-1	20	19	-1	-1	1			7
LOGAN	1	1	0	2	2	0	24	21	-3	-3	27	24	-3	-3	1		1	3
MESA	1	1	0	1	1	0	1	1	0	0	3	3	0	0			1	0
MINERAL	-	-	-	-	-	-	1	1	0	0	1	1	0	0				0
MOFFAT	1	1	0	-	-	-	26	21	-5	-5	27	22	-5	-5	1			7
MONTEZUMA	1	1	0	2	2	0	12	11	-1	-1	15	14	-1	-1	1			2
MONTROSE	1	1	0	3	3	0	15	15	0	0	19	19	0	0	1			3
MORGAN	2	2	0	1	1	0	12	11	-1	-1	15	14	-1	-1				4
OTERO	2	2	0	4	4	0	9	9	0	0	15	15	0	0			1	2
OURAY	-	-	-	1	1	0	1	1	0	0	2	2	0	0				0
PARK	-	-	-	-	-	-	14	14	0	0	14	14	0	0				7
PHILLIPS	-	-	-	2	2	0	10	9	-1	-1	12	11	-1	-1	1			2
PITKIN	-	-	-	-	-	-	2	2	0	0	2	2	0	0				0
PROWERS	1	1	0	3	3	0	28	28	0	0	32	32	0	0	3		1	12
PUEBLO	2	2	0	-	-	-	-	-	-	-	2	2	0	0			1	0
RIO BLANCO	-	-	-	2	2	0	7	7	0	0	9	9	0	0	1			6
RIO GRANDE	2	2	0	1	1	0	-	-	-	-	3	3	0	0				0
ROUTT	-	-	-	3	3	0	25	25	0	0	28	28	0	0	3			14
SAGUACHE	1	1	0	1	1	0	3	3	0	0	5	5	0	0				1
SAN JUAN	-	-	-	1	1	0	-	-	-	-	1	1	0	0				0
SAN MIGUEL	-	-	-	-	-	-	9	9	0	0	9	9	0	0				3
SEDGWICK	-	-	-	2	2	0	10	10	0	0	12	12	0	0	1			2
SUMMIT	-	-	-	-	-	-	7	7	0	0	7	7	0	0	1			3
TELLER	1	1	0	-	-	-	7	7	0	0	8	8	0	0				4
WASHINGTON	-	-	-	1	1	0	29	27	-2	-2	30	28	-2	-2	1			5
WELD	3	3	0	10	10	0	67	66	-1	-1	80	79	-1	-1				13
YUMA	-	-	-	2	2	0	23	23	0	0	25	25	0	0	1		1	3
T O T A L	50	55	+5	82	82	0	796	764	-32	-32	928	901	-27	-27	21	18	6	238

NOTE: TOTAL NUMBER OF DISTRICTS INCLUDE OPERATING AND NONOPERATING DISTRICTS. HIGH SCHOOL AND JUNIOR COLLEGE DISTRICTS ARE NOT INCLUDED IN THE TOTAL COLUMN.

SOURCE: ANNUAL REPORTS OF COUNTY SUPERINTENDENTS OF SCHOOLS FOR THE SCHOOL YEAR ENDING JUNE 30, 1957.





STATEWIDE MEETING OF COUNTY SCHOOL PLANNING COMMITTEES

Agenda

Date: December 5, 1957  
Time: 9:30 a.m. - 4:00 p.m.  
Place: Fairview Junior High School, Boulder County

Chairman: Mr. Stanley Leftwich

1. Welcome by Mr. Charles E. Williams
2. Greetings from Mrs. Anna C. Petteys
3. Greetings from Mrs. Allegra Saunders
4. Remarks from Dr. H. Grant Vest
5. Introductions by Mr. L. M. Hardin
6. Purpose of Conference by Chairman Leftwich
7. Remarks by Mr. John R. Bailey regarding Summit County Plan
8. Discussion on the following:
  - Who votes for board members
  - Geographic or population representation
  - Caution in spelling out in too much detail
    - how the new board will establish attendance centers
  - Responsibility of people to work with board
  - Non-operating districts
  - Petitions for candidates for board
9. Comments by Representative John G. Mackie
10. Comments by Mr. Nevin J. Platt about Fairview S.D, FC-5.
11. Questions Submitted by Groups

Group No. 1

1. A town in a Sedgwick County school district is located only 1/4 mile from a Nebraska school and 24 miles from the nearest Colorado school. The students are going across the state line into Nebraska to attend school. Because of this, the district is not eligible for any aid from the 12 mills paid into the county fund. Is there any way the legislature could pass an amendment so that the district could use part of the mill levy for transportation of these students?
2. Two districts have recently constructed new buildings. The bonded indebtedness of one is \$135,000; of the other, \$166,000. Under S.B. 385, this bonded indebtedness cannot be passed on to the reorganized district. Is there any way this can be changed so that the bonded indebtedness can be passed on to the consolidated district?
3. Group No. 1 suggested that the present assembly be allowed to take a vote as to whether a recommendation should be made to the legislature that a law be passed that the director districts elect their own

director rather than having the directors elected on a district-wide basis.

4. Several school districts in a county have approached the county committee asking that they be allowed to consolidate immediately. Can't the legislature pass a law that the county committee be allowed the control of voluntary reorganizations requested?

Group No. 2

1. What are the standards of a county plan which will be approved by the State Board of Education?
2. Explain the role of union high school districts in a county plan
3. Explain the levy problem with joint districts

Group No. 3

1. Is it legal to allow an alternate to vote in the absence of a committee member?
2. We would like a description of a specific format of a plan -- a sample. (This could be combined with No. 1 of Group No. 2 above)
3. How should attendance centers be indicated on a map?

Group No. 4

1. Is it necessary that a town be divided into director districts?
2. When a first class district is involved in a reorganization, may a district continue to elect its director at large?
3. If a county were to be divided into six school districts and the State Board approved the plan and four of the six districts voted approval of the plan, what would happen?
4. What will happen to the teachers who are under contracts to their school boards now if those districts are reorganized and the teachers come to a new school board?

Group No. 5

1. On bond issues at the present time it is possible to levy up to one mill levy for a building reserve fund. Can this be raised to enable setting up a building fund without having to have bond issues?
2. The present \$500.00 limit for expenses of county committees is not considered adequate and many of the members of the committees are assuming their own travel expenses. What can be done about having this amount increased?

Group No. 6

1. One member of this group would like to have a recommendation from the people here today concerning the continuance of the 12 mill county levy.

12. During discussion of the basic problems, the following question was asked regarding the first question of Group No. 1:

After a county has a plan approved by the committee and the State, might the state legislative allow the district to get some of the levy back?

It was decided the following question from Mr. John Mall of Walsenburg should be submitted to the Attorney General for an opinion:

Does a planning committee have any authority to divide a county into director districts and have more than one director within it to be elected at large?

13. Suggestions from Representative Mackie on how to lobby legislature

#### Remarks

Charles E. Williams, Chairman of the Boulder County School Planning Committee and President, Board of Education, School District FC-5, Boulder County

Mr. Williams presented some information about School District FC-5. He stated that in 1951 citizens of six school districts worked together and consolidated into one district. Since then two additional districts have joined with the district. The district consists of 60 square miles and there is a total of 1317 pupils in the district. In spite of the large school, the district has maintained its rural characteristics.

Mrs. Anna C. Petteys, Chairman, State Board of Education

Mrs. Petteys welcomed the delegates and stated she felt the legislature had acted wisely in establishing the processes whereby school districting might get started. The legislature is asking the county committees for data which legislators need to have before they can go further. She stated the State Board of Education and the Department of Education felt pleased that they were taken into the confidence of the legislature and asked to give advice and help with the school planning committees. When the county committees have completed their reports, they will be sent to the Department. The Department will make its report to the legislature from these reports. The legislature will then know the progress that has been made and how to proceed. This complete cycle is the democratic process of the "grass roots" level at work.

Mrs. Allegra Saunders, Vice-Chairman, State Board of Education

After welcoming the delegates to the meeting, Mrs. Saunders stated the two things that hit the taxpayer the hardest are new taxes and change. However, even though this meeting may hit on these two things, we must remember that we are working for the betterment of the schools and the children which we serve. Mrs. Saunders stated the State Board is ready and willing to serve the county committees in any way possible.

H. Grant Vest, Commissioner of Education

I would like to preface my remarks today by quoting from a great contemporary American leader who points out that sometimes we resist change, because of

a comfort and fondness for the past, to a point where it perils our own future. In a radio address our friend made these pertinent comments:

"When the last glacier retreated northward from what is now Connecticut, it left behind, as mementos of its visit, great boulders of rock strewn lavishly across the state. Several of them larger than corncribs and many tons of weight, were deposited on my farm and for fifteen years I have watched one of them fight a losing battle with an ash tree. The tree evidently started in a seed lodged in a tiny pocket in the top of the rock. When I first saw it, it was a sturdy sapling that had made itself a comfortable crevice for its roots. Today its irresistible growth has torn the massive rock into fragments.

"This is the law of life. The future belongs not to rigid absolutes, whether they are primal rock or unyielding social arrangements, but to the thing that can grow, whether it is a tree or a democracy.

"It is strange that a principle as familiar as this should today need underscoring, but we are living in years of uncertainty and fear, and fear induces a kind of spiritual astigmatism. To be sure, in our generation we have reason for our fears, and every justification to resist the threat that creates them. But I am thinking of fear as an evil in itself and what it does to human emotions and reactions.

"For one thing, fear breeds an instinctive hostility to growth, because growth means change, and in anxious hours men tend to cling to the shelter of the present or to put their faith in nostalgia for the past. But history's current is sweeping us into the future and we cannot stand still, nor is there now any place left to go back to. The illusion that security can be found in immobility, or that safety is dependent upon the absence of change, is perhaps the most dangerous form of imbalance which plagues the minds of men."

In this matter of school district reorganization I am sure we must recognize that the reforming of school district boundary lines is long overdue. Major changes are inevitable and we should keep at it vigorously until the job is done. The trend toward better district organization in this entire land is so rapid and convincing that we can say with certainty our obsolete school district patterns will soon be replaced with more functional district arrangements. A few years ago there were over 100,000 districts in our country. Today, there is only slightly over 50,000. And what is even more important, most states are working feverish to remedy the situation.

It is a bit ironical that in a land where progressive policies have been the toast of the world we have an outmoded school district structure. And even more serious is the fact, we are not in these critical days in a position because of that condition to make the best use of our short supply of teachers; to utilize our school plants efficiently; to provide the kind of instruction needed; or to make economical use of precious tax dollars of our people.

Now, in general, we are pleased with the progress being made in our State to correct this matter. But I should hastily add that there are specifics and details with which we cannot be content.

We have been impressed with the caliber of the men and women elected to these committees. We are convinced they are honestly endeavoring to establish a school district structure which will enable all the children and you of our

State to get a first-rate education. The voluntary approach starts out slowly on a cautious basis, but as facts and data come in, it will accelerate.

I am sure you have already learned as committee chairmen that school district reorganization involves more than merely combining two or three districts together to enlarge the area covered. School districts exist to provide some kind of an educational program.

I have just been reviewing some reports on changes that have come about as a result of reorganization of districts. These changes involved the consolidation of schools where new courses were offered in social studies, mathematics, science, foreign languages, music, art, journalism, business, shop courses, etc. Services were added such as testing programs, visual aids, cumulative pupil records, central library services, physical examinations, speech correction, and remedial reading. To these items could be added the statement that teacher qualifications are generally better in reorganized districts; business practices are improved and better school plant facilities are made available. I have yet to learn of any major reorganization which the people have repudiated and gone back to what existed before.

As we move ahead with our plans, we ought to keep this idea of better educational opportunities for our youth firmly in our minds. If you would take a look at reorganization at large in this nation, you would find it almost incredible to believe that plans have been proposed (and in some instances adopted), which leaves one wondering if reorganization has taken place at all because the same old problems exist of a diluted education program.

It was because of this concern (and may I assure you the State Board of Education gave the matter their very serious thought), that the Board set forth a statement of Standards that would help make your planning more realistic. There is wide agreement that the Standards set forth are minimum requirements for sound and practical units of administration (I mean one complete local school system). They should be a useful guide.

Now we have the problems of sparsity. There will of necessity always be many small schools. These are the schools that stand to gain the most from reorganization. In adequate school districts these schools present a special challenge and get special attention. When the district structure is defensible and schools are necessarily isolated the State finance program will be geared to help them meet their particular needs and a just claim can be made upon the State if sound district reorganization has been accomplished.

Perhaps next to the problem of standards, the problem of timing has been most often raised. It would be unwise to act hastily without a careful study of the facts and ample deliberation on the problem. But this should not serve as a reason for delay. The needs are sufficiently urgent to justify moving ahead as rapidly as possible.

Furthermore, in many places it is so clearly obvious that circumstances admit of only one or two patterns which would comply with acceptable standards that in those situations rather immediate action could be taken.

Whenever it is possible, I would encourage you to see the advantages of getting started with the new organization for the next fiscal year which will begin July 1, 1958. If you expect to start for the school year, July 1, 1958, this could be achieved by getting your plans ready soon after January 1. Several counties have their eyes on this goal.

School planning committees have been formed in 58 counties. These committees are composed of nine to thirteen members as provided by law. No committees were formed in five counties since they are now a single school district or have a completed plan of reorganization which is satisfactory. Those five counties are: Denver, Delta, Jefferson, San Juan and Mineral.

The progress of these 58 committees is heartening. Many of them are meeting each month. A few committees are meeting frequently (once a week) seeking to complete their work soon because of the urgency of the situation locally. Mr. Leftwich who is my special assistant in charge of the project has met or will have met with all committees by December 15.

One county "Summit" has a plan in the State office which has the approval of the Commissioner of Education. This plan would combine all districts into one district except for a joint district with Grand County. Five other counties with plans near completion are: Conejos, Costilla, Grand, Huerfano and Las Animas. Committees are making surveys and thorough studies of the public school systems in their counties. Committees are cooperating on problems of joint districts across county lines.

Now, of course, you know each committee was requested to prepare a report of its activities up to November 15. Most of such reports have been received.

We are here today to help all chairmen and secretaries of County Planning Committees to prepare a report for the Legislature.

One final statement needs to be made regarding school district organization, namely; The fulfillment of all the conditions regarding adequate number of pupils enrolled, adequate taxable resources behind each pupil, strong and logical community arrangements, does not of itself automatically result in the improvement of educational programs.

We have seen and heard of reorganizations that brought all these conditions together without ever developing the potential for improved instructional programs. This is simply to say there is no magic in organization itself to automatically bring about improvements. There is still a need for alert leadership and cooperative community efforts. Reorganization opens the door to improvements that would never otherwise be possible.

There will always be a challenge in school administration to develop the hidden potential of each district. Even in reorganized districts it will be necessary to be careful not to spread the dollars over more subjects and services than the school system can provide. Pupils and teachers must not make their efforts so the fundamentals cannot be mastered.

If Colorado children are to have the kind of schooling needed in our times you and I must first of all see to it that we have established a sound school district structure for the school program. Then, of course, it goes without saying that we must demand that this organization function as well as those in the private enterprises to correct this situation.

Mr. L. M. Hardin, Consultant, Division of School District Organization  
State Department of Education

Mr. Hardin introduced persons present. A total of 100 persons attended the meeting. There were 42 of the 63 counties represented.

Stanley A. Leftwich, Director, School District Organization  
State Department of Education

One of the primary purposes of this conference is to discuss the reports which will go from the county committees through the State Department of Education to the Colorado General Assembly. Suggested outlines for such reports have been circulated and there has been good response on these reports. Some of the committees have indicated they would like to take a little more time to get their reports in; however, since there is a deadline on the reports in order to get them printed, they should be returned no later than the end of this week. The most important thing stressed today is that these reports are the reports of the county committees; they are not the interpretation of the State Department of Education about the committees' endeavors. The Department will make its own report to the General Assembly but feels it imperative the committees feel that through these reports they are telling the general assembly about the work they are doing in their own communities. The state legislature desires to know the problems the committees are encountering and how it can be of assistance. They want information about the project throughout the entire state so that they will know how to proceed.

Mr. John R. Bailey, Secretary,  
Summit County School Planning Committee

Summit county is the first county to submit a plan for approval to the State Department of Education under Senate Bill 385. The ten districts in Summit County (except for small northwestern portion which will be joint with Grand County) will be organized into one administrative unit. Mr. Bailey stated the main problems in accomplishing this were holdover feelings from House Bill 900 which was a failure in Summit County, local pride, and fear of losing attendance centers. The county is a natural geographic unit so the county-wide plan is a very simple and logical one. A lot is being left up to the members of the new board with emphasis to be placed on the hiring of a trained administrator. Some problems still to be solved will be transportation, maximum use of existing facilities, and planning ahead for an expected fairly large increase in school population which is going to demand either drastic modification of facilities or the planning of new buildings and re-arrangement of attendance centers. Mr. Bailey hastened to add that he would hesitate to say that Summit County is a typical county and that other counties should follow this exact plan.

In the discussion that followed, delegates had the opportunity to question Mr. Bailey and the following points were brought out:

1. Probably there is no "typical" county in Colorado and no one plan that can be followed by every county committee.
2. Caution should be used in spelling out in detail in the plan how the new board of education will establish attendance centers.
3. Care should be taken that each district has representation (is it better to have geographic or population representation?) on the new board.
4. Cooperation between counties when needed (such as was used between Summit and Grand Counties) is most desirable.
5. The people have the responsibility of working with the new board of education in solving problems.

6. Petitions by candidates for school board may be signed by voters from all director districts.

The Honorable John G. Mackie, State Representative;  
Member, Legislative Council Committee on  
Education

Representative Mackie stated he was happy to be able to be in attendance at this meeting and was sorry more of the members of the Legislative Council Committee on Education could not be present. However, he stated that the fact the school planning committees were working on the legislative mandate was the important thing. He stated the legislature could not lay out school district lines but that the county committees can and if the present ones do not maybe some other committees will. He explained that Senate Bill 385 came out of studies conducted by the Legislative Council Committee on Education. The Committee knew something had to be done to cope with the problem of the growing state. A subcommittee of the Legislative Council Committee on Education visited all sections of the state and came up with Senate Bill 385 which put the problem back on the people in the counties because they felt the people could do it better. Representative Mackie urged the county committees to let the legislature and the Department of Education know what they have found out by working on school district organization in their own counties. The legislators want to know this so that they will know how to proceed further.

Later in the meeting Representative Mackie emphasized that the best way to make known to the legislature the problems in individual communities is for the local people to contact their own legislators prior to the legislative session in January.

Mr. Nevin J. Platt, Superintendent School District FC-5,  
Boulder County

Mr. Platt presented some information on how advisory committees have been used in S.D. FC-5. He stated that from each of the six districts that were consolidated a representative had been appointed and this group was called the advisory board. It met with the new board of education a good many times. This had a lot to do with the success of being able to pass the first bond issue so that several old school buildings could be abandoned and the present modern school built. Although all problems are not yet solved (such as transportation, pupil population growth, etc.) Mr. Platt stated he felt the people have made great strides in their education program and are offering their children a better educational program than before consolidation. The cost of the present building was \$12.96 a square foot. The assessed valuation is a little over \$15,000,000; the tax rate is 27 mills, which includes the county mill levy.

#### Roster For Statewide Meeting

##### COUNTY

Alamosa	Mrs. Vera E. Linger
Baca	Eva M. Acre, C. S. Mackey, Warren Brinkley
Bent	Mrs. Melva Busbey
Boulder	Charles E. Williams, Glen W. Pennock, Clyde Gelwick, Wanda McDermitt, Miles Eloë



Chaffee	J. E. Stewart
Cheyenne	Celia G. McClaskey
Clear Creek	George R. Gaubatz, Frances C. Richardson
Conejos	Robert Montano, Antonio Lucero
Custer	Frances E. Kettle, Mrs. Barbara Donley
Dolores	Nathan V. Mellott, L. A. Stowe
Douglas	Robert F. Metzler, Ed R. Rodine
Eagle	Jeannette Buchholz, D. E. Johnson, J. E. Ripple
Fremont	G. A. Stewart, John Verlengia
Garfield	Josephine Busby, Owen Boulton
Grand	Lorrayne Gould, Dr. George Warren, Mrs. Gene Long
Huerfano	Frances Nelson, John Mall
Jackson	John Mallon, Peter H. Lepponen
Lake	Elizabeth Cavanaugh, E. J. Kelly
La Plata	Vivian J. Maxwell, Mrs. D. L. Wells
Larimer	R. E. Sidney, Edna Kroh, Frank L. Irwin
Las Animas	Harry C. Raye, Dr. A. A. Lamden, John Myers, John Johnson, Hugh A. Linn, Eugene McGinn, C. C. Davidson
Lincoln	Jennie E. Summers, Jesse C. Christenson
Logan	Griffith Ramay
Moffat	Anna C. Maudlin, June Sweeney
Montezuma	Russell Hindmarsh, Charles M. McAfee
Morgan	Marian Lockwood, Raymond Fries
Otero	George Strain, Verne L. Campbell
Park	Walter A. Chapman
Phillipa	Keith Ham, Phil Ruch, August Krehmeyer, Harold Firme
Prowers	Reva Davidson, Charles Kendall
Rio Blanco	Dorothy A. Barrett, Victor Charles
Rio Grande	Orval Schall
Routt	Geraldine Elkins
San Miguel	Irene M. P. Wichmann, Richard Stevens
Sedgwick	Runyon Race, Arthur Marquardt
Summit	John Bailey
Teller	Loretta L. Davis
Washington	L. A. Rhoades, Carl Easter
Weld	Paul N. Lodwick, J. T. Turner, David D. Hill
Yuma	Herbert Oman, Marion Hutton, R. A. Huckins

OTHERS PRESENT:

Elaine C. Homan, Legislative Council  
 John C. Mackie, State Representative  
 Anna C. Petteys, Chairman, State Board of Education  
 Allegra Saunders, State Board of Education  
 H. Grant Vest, Commissioner of Education  
 Leo P. Black, Assistant Commissioner of Education  
 Robert Romans, State Department of Education  
 Lucy C. Auld, State Department of Education  
 Stanley A. Leftwich, State Department of Education  
 W. D. Asfahl, State Department of Education  
 L. M. Hardin, State Department of Education

Secretaries in Charge of Registration:

Hazel Paste      Elizabeth Vasquez      Hanna Pincuss



