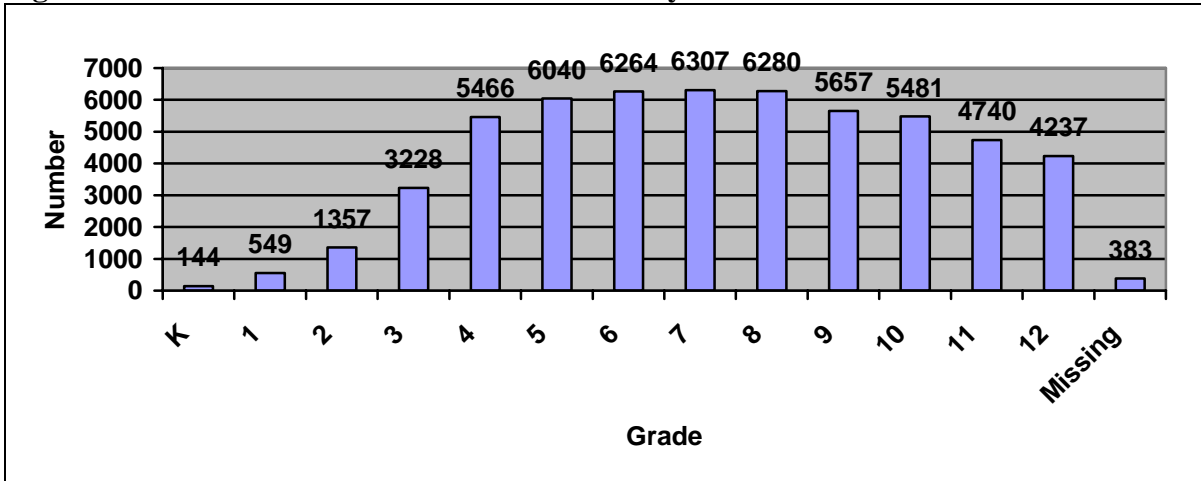


## Gifted and Talented Student Education Funds FY2006 (2005-2006) End-of-Year Report

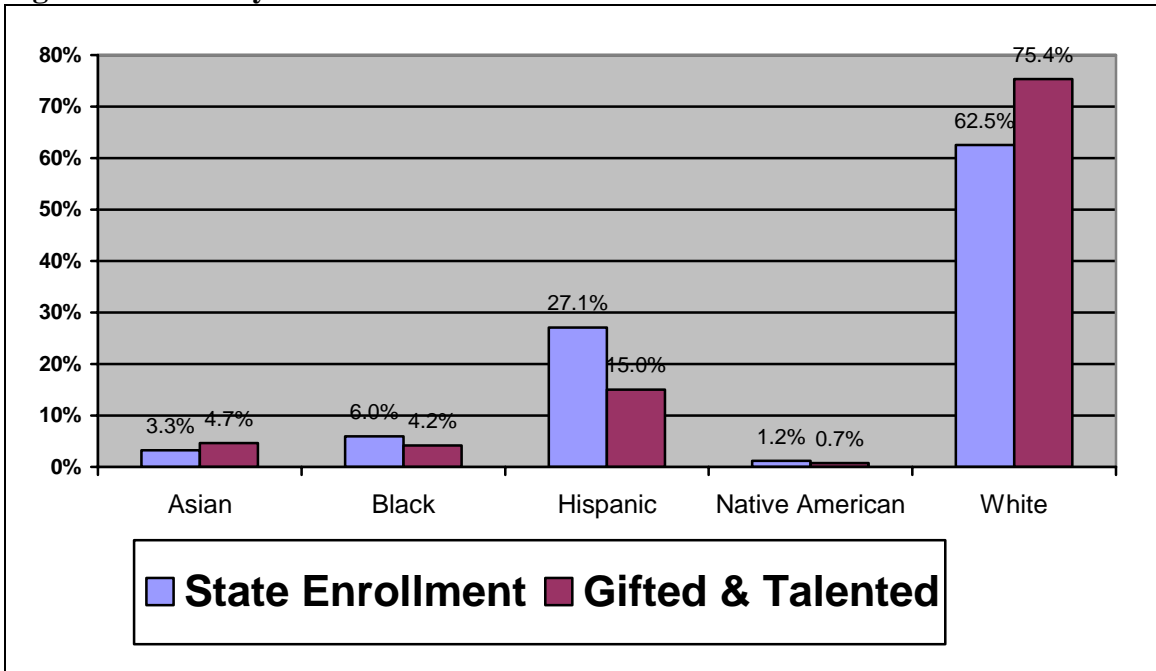
### I. Demographic Results

- ❖ Total number of gifted and talented students formally identified in the district or BOCES as of the last day of the school year: 56,133.

**Figure 1. Number of Gifted Talented Students by Grade.**



**Figure 2. Ethnicity Breakdown for State Enrollment and Gifted/Talented.**



**FY2005-2006: Ethnicity of Gifted & Talented Students by Administrative Unit.**

Administrative Unit	Population	Percent Asian	Percent Black	Percent Hispanic	Percent Native American	Percent White
Adams - Arapahoe 28J - Aurora	G/T	7.8%	14.9%	25.2%	1.0%	51.2%
	TOTAL	4.1%	21.2%	48.1%	0.9%	25.8%
Adams 1 - Mapleton	G/T	4.9%	2.1%	35.0%	0.0%	58.0%
	TOTAL	3.2%	2.1%	61.9%	1.7%	31.1%
Adams 12 - Northglenn	G/T	8.8%	1.5%	9.4%	0.8%	79.6%
	TOTAL	5.2%	2.7%	29.1%	1.0%	62.0%
Adams 14 - Commerce City	G/T	0.8%	3.8%	60.5%	2.7%	32.2%
	TOTAL	0.7%	2.7%	76.8%	1.5%	18.4%
Adams 27J - Brighton	G/T	2.1%	0.8%	24.2%	1.3%	71.5%
	TOTAL	3.1%	2.2%	42.6%	0.9%	51.2%
Adams 50 - Westminster	G/T	9.2%	1.6%	39.6%	0.6%	49.0%
	TOTAL	6.4%	2.0%	61.9%	1.0%	28.7%
Arapahoe 1 - Englewood	G/T	2.0%	2.9%	15.7%	5.9%	73.5%
	TOTAL	2.0%	4.6%	29.2%	2.1%	62.0%
Arapahoe 2 - Sheridan	G/T	6.0%	5.0%	58.0%	2.0%	29.0%
	TOTAL	3.3%	3.2%	62.6%	2.1%	28.9%
Arapahoe 5 - Cherry Creek 5	G/T	7.5%	4.7%	4.2%	0.2%	83.4%
	TOTAL	7.5%	13.4%	11.9%	0.5%	66.7%
Arapahoe 6 - Littleton	G/T	3.5%	0.5%	3.1%	0.4%	92.4%
	TOTAL	3.1%	2.0%	10.9%	0.7%	83.3%
Boulder RE 2 - Boulder Valley	G/T	8.6%	0.8%	5.0%	0.3%	85.3%
	TOTAL	6.2%	1.7%	13.7%	0.6%	77.8%
Centennial BOCES	G/T	0.7%	0.7%	15.2%	0.7%	82.8%
	TOTAL	0.7%	0.6%	33.0%	0.6%	65.1%
Charter School Institute	G/T	Missing	Missing	Missing	Missing	Missing
	TOTAL	1.3%	4.2%	14.9%	0.8%	78.8%
Delta 50J	G/T	1.6%	0.5%	9.5%	1.1%	87.4%
	TOTAL	0.7%	0.7%	17.3%	0.9%	80.4%
Denver Public Schools	G/T	4.8%	14.7%	40.5%	1.1%	38.8%
	TOTAL	3.1%	18.4%	57.5%	1.2%	19.8%
Douglas County RE-1	G/T	8.0%	0.5%	2.6%	0.5%	88.3%
	TOTAL	4.1%	1.9%	6.8%	0.6%	86.6%
East Central BOCES	G/T	0.0%	1.2%	9.1%	0.0%	89.7%
	TOTAL	1.1%	1.2%	12.1%	0.8%	84.4%
El Paso 11 - Colorado Springs	G/T	3.7%	2.9%	8.6%	0.9%	84.0%
	TOTAL	2.7%	10.5%	20.5%	1.6%	64.7%
El Paso 12 - Cheyenne Mountain	G/T	2.1%	3.2%	1.1%	0.0%	93.7%
	TOTAL	5.1%	3.5%	8.9%	0.9%	81.7%
El Paso 2 - Harrison	G/T	10.2%	17.3%	20.0%	1.6%	50.8%
	TOTAL	5.1%	24.1%	35.2%	1.8%	33.8%
El Paso 20 - Academy	G/T	6.1%	1.2%	3.9%	0.3%	88.6%
	TOTAL	4.9%	4.3%	7.0%	0.8%	82.9%
El Paso 3 - Weldfield	G/T	11.5%	0.0%	15.4%	0.0%	73.1%
	TOTAL	3.9%	15.9%	17.5%	1.3%	61.3%
El Paso 38 - Lewis-Palmer	G/T	2.7%	0.9%	4.0%	0.6%	91.8%
	TOTAL	2.6%	1.4%	5.0%	0.9%	90.1%
El Paso 49 - Falcon	G/T	5.1%	4.6%	8.5%	1.0%	80.8%
	TOTAL	5.0%	9.0%	14.1%	1.5%	70.3%
El Paso 8 - Fountain	G/T	4.1%	13.7%	15.4%	0.8%	66.0%
	TOTAL	3.5%	17.8%	16.9%	1.6%	60.1%
Administrative Unit	Population	Percent	Percent	Percent	Percent	Percent

		Asian	Black	Hispanic	Native American	White
Elbert - Elizabeth C1	G/T	0.0%	0.0%	5.6%	5.6%	88.9%
	TOTAL	1.5%	1.3%	7.3%	0.9%	89.0%
Fremont RE1 - Canon City	G/T	1.1%	0.5%	5.3%	1.1%	92.0%
	TOTAL	1.3%	1.0%	8.0%	1.0%	88.7%
Gunnison Watershed RE1J	G/T	1.0%	0.5%	1.0%	0.0%	97.4%
	TOTAL	1.2%	0.6%	11.9%	1.1%	85.2%
Jefferson County R1	G/T	4.8%	0.7%	7.0%	0.7%	86.8%
	TOTAL	3.6%	1.9%	17.2%	1.1%	76.3%
Larimer R1 - Poudre	G/T	4.1%	0.5%	3.4%	0.5%	91.5%
	TOTAL	3.2%	1.9%	15.0%	1.1%	78.8%
Larimer R2-J - Thompson	G/T	2.4%	0.4%	3.2%	0.4%	93.7%
	TOTAL	1.4%	1.0%	13.7%	0.9%	82.9%
Larimer R3 -Park (Estes Park)	G/T	1.8%	0.0%	0.9%	0.0%	97.3%
	TOTAL	1.2%	0.9%	16.6%	0.9%	80.3%
Logan RE1 - Valley	G/T	0.0%	0.0%	5.4%	0.0%	94.6%
	TOTAL	0.7%	1.4%	17.5%	1.1%	79.3%
Mesa County Valley 51	G/T	1.2%	0.4%	6.2%	1.0%	91.3%
	TOTAL	1.0%	1.3%	16.8%	1.4%	79.4%
Moffat County RE1	G/T	16.7%	0.0%	16.7%	0.0%	66.7%
	TOTAL	0.9%	0.7%	13.0%	1.1%	84.3%
Montrose County RE1J	G/T	1.5%	0.2%	6.4%	0.2%	91.6%
	TOTAL	1.1%	0.7%	29.0%	0.6%	68.6%
Morgan RE3 - Fort Morgan	G/T	0.6%	0.0%	17.5%	0.0%	81.9%
	TOTAL	0.2%	0.3%	54.4%	0.4%	44.7%
Mountain BOCES	G/T	1.2%	0.1%	10.1%	0.3%	88.3%
	TOTAL	1.0%	0.4%	33.7%	0.6%	64.3%
Mt. Evans BOCES	G/T	2.8%	0.5%	6.2%	0.0%	90.5%
	TOTAL	1.3%	1.1%	5.8%	1.5%	90.3%
Northeastern BOCES	G/T	0.5%	0.0%	5.6%	0.0%	93.9%
	TOTAL	0.6%	0.6%	20.6%	0.4%	77.8%
Northwestern BOCES	G/T	2.5%	0.0%	4.9%	1.2%	91.4%
	TOTAL	1.0%	0.3%	7.5%	0.7%	90.5%
Pikes Peak BOCES	G/T	0.0%	0.0%	6.7%	0.0%	93.3%
	TOTAL	1.2%	1.6%	10.9%	1.5%	84.7%
Pueblo 60 - Urban	G/T	1.1%	2.2%	48.8%	0.9%	47.0%
	TOTAL	0.7%	2.7%	60.2%	1.3%	35.2%
Pueblo 70 - Rural	G/T	0.5%	0.8%	15.5%	0.3%	83.0%
	TOTAL	0.6%	1.4%	26.5%	1.0%	70.4%
Rio Blanco BOCES	G/T	0.0%	1.3%	2.6%	0.0%	96.1%
	TOTAL	0.3%	0.4%	8.3%	1.8%	89.4%
San Juan BOCES	G/T	1.9%	1.0%	5.6%	2.2%	89.2%
	TOTAL	0.9%	1.0%	15.1%	7.5%	75.5%
San Luis Valley BOCES	G/T	2.5%	0.7%	45.2%	1.0%	50.6%
	TOTAL	0.8%	0.6%	56.3%	1.3%	41.1%
Santa Fe Trail BOCES	G/T	1.5%	0.6%	18.8%	0.6%	78.4%
	TOTAL	1.2%	1.3%	51.0%	0.8%	45.7%
South Central BOCES	G/T	0.0%	0.0%	12.7%	0.7%	86.7%
	TOTAL	0.7%	1.3%	31.2%	1.2%	65.6%
Southeastern BOCES	G/T	1.1%	0.0%	16.2%	0.2%	82.5%
	TOTAL	1.0%	10.5%	35.7%	0.8%	52.0%
Southwestern BOCES	G/T	0.4%	0.8%	5.1%	4.7%	88.9%
	TOTAL	0.8%	0.8%	12.6%	20.3%	65.5%

**Table 1. Gender Breakdown GT 2005-2006.**

	Number	Percent
Female	27,459	49%
Male	28,674	51%
Total	56,133	100%

- ❖ **Total number of non-identified students that were served by gifted-education programming plus number of identified students: 71,593**
- ❖ **Total number of twice exceptional students: 1.501**
- ❖ **Total number of early G/T kindergarten entrants (age 4 at start of 04-05 school year): 14**

**Table 2. Percent of Enrolled Students Identified for GT.**

	2005-2006	2004-2005	2003-2004
Mean	7.4%	6.4%	7.6%
Median	6.0%	6.2%	6.2%
Standard Deviation	7.9%	4.0%	7.7%
Minimum	0%	0%	0%
Maximum	53%	19%	50%

## II. Expenditures

**Table 3. Total Gifted Talented Expenditures 2005-2006.**

Category	State	Local	Federal	Total
Personnel	\$3,621,158.26	\$30,362,209.24	\$471,030.34	\$34,454,397.84
Development	\$680,829.17	\$509,655.94	\$381,212.34	\$1,571,697.45
Activities	\$684,964.39	\$1,019,597.25	\$6,506.00	\$1,711,067.64
Materials	\$929,245.41	\$825,375.47	\$34,035.91	\$1,788,656.79
Equipment	\$76,266.12	\$124,770.38	\$2,582.09	\$203,618.59
<b>Total</b>	<b>\$5,992,463.35</b>	<b>\$32,841,608.28</b>	<b>\$895,366.68</b>	<b>\$39,729,438.31</b>
Percent of Total	15.1%	82.7%	2.3%	

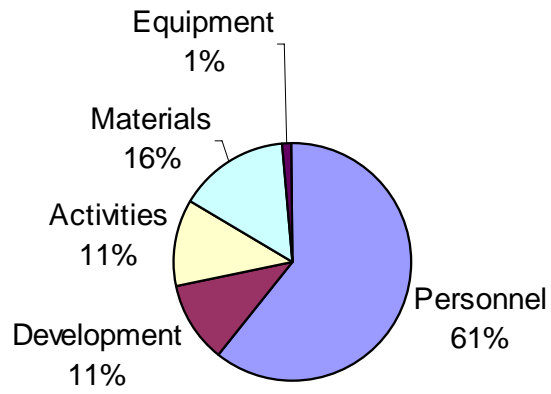
**Table 4. Total Gifted Talented Expenditures 2004-2005.**

Category	State	Local	Federal	Total
Personnel	\$3,752,859.00	\$31,261,129.00	\$611,701.00	\$35,625,689.00
Development	\$695,461.00	\$473,317.00	\$968,036.00	\$2,136,814.00
Activities	\$667,644.00	\$1,198,009.00	\$10,562.00	\$1,876,215.00
Materials	\$826,757.00	\$884,859.00	\$11,482.00	\$1,723,098.00
Equipment	\$61,499.00	\$115,948.00	\$0.00	\$177,447.00
<b>Total</b>	<b>\$6,004,220.00</b>	<b>\$33,933,262.00</b>	<b>\$1,601,781.00</b>	<b>\$41,539,263.00</b>
Percent of Total	14.5%	81.7%	3.9%	

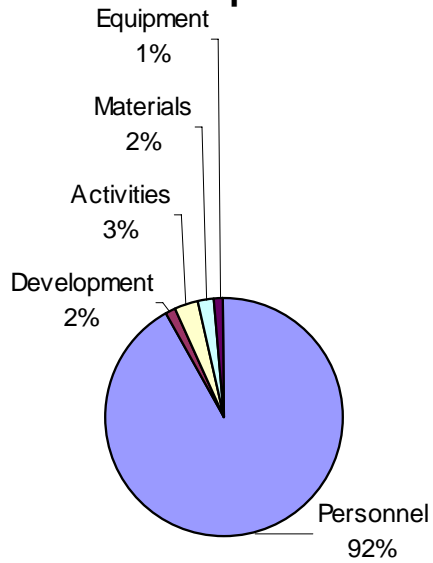
**Table 5. Total Gifted Talented Expenditures 2003-2004.**

Category	State	Local	Federal	Total
Personnel	\$3,506,145.00	\$31,731,692.00	\$271,660.00	\$35,509,497.00
Development	\$696,865.00	\$572,985.00	\$25,760.00	\$1,295,610.00
Activities	\$712,008.00	\$1,072,171.00	\$18,445.00	\$1,802,624.00
Materials	\$981,940.00	\$830,649.00	\$21,914.00	\$1,834,503.00
Equipment	\$137,405.00	\$152,055.00	\$200.00	\$289,659.00
<b>Total</b>	<b>\$6,034,363.00</b>	<b>\$34,359,552.00</b>	<b>\$337,979.00</b>	<b>\$40,731,893.00</b>
Percent of Total	14.8%	84.4%	0.8%	

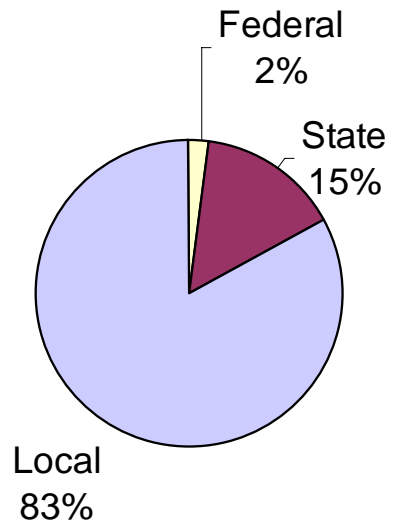
**Figure 3: State GT Expenditures - FY05-06**



**Figure 4: Local GT Expenditures - FY05-06**



**Figure 5: Total GT Funding - FY05-06**



### III. Programming and Accountability Report Results

#### A. Delivery Model

**Table 6. Delivery Model Programming Type: First Choice, Elementary School.**

	Frequency	Percent	Cumulative Percent
MISSING	6	9.8	9.8
101. School for gifted students	2	3.3	13.1
102. Magnet Program (within a school)	4	6.6	19.7
103. Resource center programs	2	3.3	23.0
104. Special Classes or seminars	1	1.6	24.6
105. Pull-out classes	20	32.8	57.4
106. Consultation and/or coaching	5	8.2	65.6
107. Inclusion - in the regular classroom	21	34.4	100.0
Total	61	100.0	

**Table 7. Delivery Model Programming Type: First Choice, Middle School.**

	Frequency	Percent	Cumulative Percent
MISSING	5	8.2	8.2
101. School for gifted students	1	1.6	9.8
102. Magnet Program (within a school)	2	3.3	13.1
103. Resource center programs	1	1.6	14.8
104. Special Classes or seminars	12	19.7	34.4
105. Pull-out classes	5	8.2	42.6
106. Consultation and/or coaching	6	9.8	52.5
107. Inclusion - in the regular classroom	29	47.5	100.0
Total	61	100.0	

**Table 8. Delivery Model Programming Type: First Choice, High School.**

	Frequency	Percent	Cumulative Percent
MISSING	9	14.8	14.8
101. School for gifted students	1	1.6	16.4
102. Magnet Program (within a school)	3	4.9	21.3
104. Special Classes or seminars	16	26.2	47.5
105. Pull-out classes	1	1.6	49.2
106. Consultation and/or coaching	5	8.2	57.4
107. Inclusion - in the regular classroom	26	42.6	100.0
Total	61	100.0	



**Table 9. Delivery Model Accountability Method: First Choice, Elementary School.**

	Frequency	Percent	Cumulative Percent
AuthPerf: Portfolio	6	10.9	10.9
AuthPerf: Exhibitions	3	5.5	16.4
AuthPerf: Juried Presentations	1	1.8	18.2
AuthPerf: Rubrics	14	25.5	43.6
AuthPerf: Independent Study	2	3.6	47.3
AuthPerf: Admission to Prog.	3	5.5	52.7
Testing-Mastery-Learning	1	1.8	54.5
Testing: Norm-Referenced	6	10.9	65.5
Testing: Criterion Referenced	4	7.3	72.7
Testing: Out-of-Level	1	1.8	74.5
Testing: Pre/Post	2	3.6	78.2
Testing: Teacher Designed	4	7.3	85.5
SubjAssess: Anecdotal/Docs	1	1.8	87.3
SubjAssess: Parent Conf.	1	1.8	89.1
SubjAssess: Mentor/Teach. Conf.	3	5.5	94.5
SubjAssess: Teach./Student Narratives	1	1.8	96.4
InvScalesObs: Questionnaires	1	1.8	98.2
RefEval: Parent Evaluation	1	1.8	100.0
Total	55	100.0	
MISSING	6		
Total	61		

**Table 10. Delivery Model Accountability Method: First Choice, Middle School.**

	Frequency	Percent	Cumulative Percent
AuthPerf: Portfolio	3	5.4	5.4
AuthPerf: Exhibitions	4	7.1	12.5
AuthPerf: Rubrics	9	16.1	28.6
Auth Perf: Competition Results	2	3.6	32.1
AuthPerf: Independent Study	1	1.8	33.9
AuthPerf: Admission to Prog.	2	3.6	37.5
Testing-Mastery-Learning	4	7.1	44.6
Testing: Norm-Referenced	6	10.7	55.4
Testing: Criterion Referenced	3	5.4	60.7
Testing: Out-of-Level	2	3.6	64.3
Testing: Pre/Post	2	3.6	67.9
Testing: Teacher Designed	7	12.5	80.4
SubjAssess: Anecdotal/Docs	2	3.6	83.9
SubjAssess: Parent Conf.	2	3.6	87.5
SubjAssess: Mentor/Teach. Conf.	2	3.6	91.1
SubjAssess: Interviews	1	1.8	92.9
SubjAssess: Teach./Student Narratives	1	1.8	94.6
InvScalesObs: Questionnaires	1	1.8	96.4
InvScalesObs: Surveys/Appraisals	2	3.6	100.0
Total	56	100.0	
MISSING	5		
Total	61		

**Table 11. Delivery Model Accountability Method: First Choice, High School.**

	Frequency	Percent	Cumulative Percent
AuthPerf: Portfolio	2	3.9	3.9
AuthPerf: Exhibitions	3	5.9	9.8
AuthPerf: Juried Presentations	1	2.0	11.8
AuthPerf: Rubrics	4	7.8	19.6
AuthPerf: Admission to Prog.	2	3.9	23.5
AuthPerf: Diploma/Cert.	2	3.9	27.5
Testing: Exams	6	11.8	39.2
Testing-Mastery-Learning	4	7.8	47.1
Testing: Norm-Referenced	6	11.8	58.8
Testing: Criterion Referenced	3	5.9	64.7
Testing: Out-of-Level	1	2.0	66.7
Testing: Pre/Post	2	3.9	70.6
Testing: Teacher Designed	6	11.8	82.4
SubjAssess: Anecdotal/Docs	2	3.9	86.3
SubjAssess: Parent Conf.	1	2.0	88.2
SubjAssess: Mentor/Teach. Conf.	3	5.9	94.1
SubjAssess: Interviews	1	2.0	96.1
SubjAssess: Staffing/Child Study Conf.	1	2.0	98.0
RefEval: Parent Evaluation	1	2.0	100.0
Total	51	100.0	
MISSING	10		
Total	61		

\

## B. Advanced Curriculum-Based Options

**Table 12. Advanced Curriculum-Based Programming Type: First Choice, Elementary School.**

	Frequency	Percent	Cumulative Percent
MISSING	17	27.9	27.9
201. Honor Classes	2	3.3	31.1
202. Advanced placement classes	1	1.6	32.8
203. Advanced class in core area	28	45.9	78.7
204. Advanced elective class	2	3.3	82.0
205. Advanced skill development class	9	14.8	96.7
207. Autonomous Learner Class	2	3.3	100.0
Total	61	100.0	

**Table 13. Advanced Curriculum-Based Programming Type: First Choice, Middle School.**

	Frequency	Percent	Cumulative Percent
MISSING	10	16.4	16.4
201. Honor Classes	9	14.8	31.1
202. Advanced placement classes	3	4.9	36.1
203. Advanced class in core area	33	54.1	90.2
204. Advanced elective class	3	4.9	95.1
205. Advanced skill development class	2	3.3	98.4
207. Autonomous Learner Class	1	1.6	100.0
Total	61	100.0	

**Table 14. Advanced Curriculum-Based Programming Type: First Choice, High School.**

	Frequency	Percent	Cumulative Percent
MISSING	6	9.8	9.8
201. Honor Classes	21	34.4	44.3
202. Advanced placement classes	27	44.3	88.5
203. Advanced class in core area	4	6.6	95.1
205. Advanced skill development class	1	1.6	96.7
206. Advanced online classes	2	3.3	100.0
Total	61	100.0	

**Table 15. Advanced Curriculum-Based Accountability Method: First Choice, Elementary School.**

	Frequency	Percent	Cumulative Percent
AuthPerf: Portfolio	3	6.8	6.8
AuthPerf: Exhibitions	1	2.3	9.1
AuthPerf: Rubrics	2	4.5	13.6
Auth Perf: Competition Results	1	2.3	15.9
AuthPerf: Admission to Prog.	1	2.3	18.2
Testing: Exams	1	2.3	20.5
Testing-Mastery-Learning	7	15.9	36.4
Testing: Norm-Referenced	2	4.5	40.9
Testing: Criterion Referenced	5	11.4	52.3
Testing: Out-of-Level	4	9.1	61.4
Testing: Pre/Post	5	11.4	72.7
Testing: Teacher Designed	11	25.0	97.7
SubjAssess: Mentor/Teach. Conf.	1	2.3	100.0
Total	44	100.0	
MISSING	17		
Total	61		

**Table 16. Advanced Curriculum-Based Accountability Method: First Choice, Middle School.**

	Frequency	Percent	Cumulative Percent
AuthPerf: Portfolio	1	2.0	2.0
AuthPerf: Rubrics	2	3.9	5.9
AuthPerf: Admission to Prog.	6	11.8	17.6
Testing: Exams	4	7.8	25.5
Testing-Mastery-Learning	4	7.8	33.3
Testing: Norm-Referenced	5	9.8	43.1
Testing: Criterion Referenced	4	7.8	51.0
Testing: Out-of-Level	3	5.9	56.9
Testing: Pre/Post	5	9.8	66.7
Testing: Teacher Designed	16	31.4	98.0
SubjAssess: Mentor/Teach. Conf.	1	2.0	100.0
Total	51	100.0	
MISSING	10		
Total	61		

**Table 17. Advanced Curriculum-Based Accountability Method: First Choice, High School.**

	Frequency	Percent	Cumulative Percent
AuthPerf: Portfolio	3	5.7	5.7
AuthPerf: Exhibitions	1	1.9	7.5
AuthPerf: Admission to Prog.	2	3.8	11.3
Testing: Exams	24	45.3	56.6
Testing-Mastery-Learning	3	5.7	62.3
Testing: Norm-Referenced	2	3.8	66.0
Testing: Criterion Referenced	6	11.3	77.4
Testing: Teacher Designed	11	20.8	98.1
SubjAssess: Written Feedback	1	1.9	100.0
Total	53	100.0	
MISSING	8		
Total	61		

### C. Within-Class Instructional Differentiation or Accommodations

**Table 18. Within-Class Instructional Differentiation of Accommodations Programming Type: First Choice, Elementary School.**

	Frequency	Percent	Cumulative Percent
MISSING	6	9.8	9.8
301. Curriculum compacting	8	13.1	23.0
302. Alternative content/process/product	28	45.9	68.9
304. Accommodations for strength areas	6	9.8	78.7
305. Individualized plans (IEP, ALP, etc.)	10	16.4	95.1
306. Pre-testing	3	4.9	100.0
Total	61	100.0	

**Table 19. Within-Class Instructional Differentiation of Accommodations Programming Type: First Choice, Middle School.**

	Frequency	Percent	Cumulative Percent
MISSING	6	9.8	9.8
301. Curriculum compacting	6	9.8	19.7
302. Alternative content/process/product	27	44.3	63.9
304. Accommodations for strength areas	10	16.4	80.3
305. Individualized plans (IEP, ALP, etc.)	7	11.5	91.8
306. Pre-testing	5	8.2	100.0
Total	61	100.0	

**Table 20. Within-Class Instructional Differentiation of Accommodations  
Programming Type: First Choice, High School.**

	Frequency	Percent	Cumulative Percent
MISSING	12	19.7	19.7
301. Curriculum compacting	4	6.6	26.2
302. Alternative content/process/product	23	37.7	63.9
303. Contract learning	3	4.9	68.9
304. Accommodations for strength areas	10	16.4	85.2
305. Individualized plans (IEP, ALP, etc.)	5	8.2	93.4
306. Pre-testing	4	6.6	100.0
Total	61	100.0	

**Table 21. Within-Class Instructional Differentiation of Accommodations  
Accountability Method: First Choice, Elementary School.**

	Frequency	Percent	Cumulative Percent
AuthPerf: Portfolio	2	3.6	3.6
AuthPerf: Exhibitions	1	1.8	5.5
AuthPerf: Rubrics	9	16.4	21.8
AuthPerf: Independent Study	3	5.5	27.3
AuthPerf: Admission to Prog.	1	1.8	29.1
Testing-Mastery-Learning	3	5.5	34.5
Testing: Norm-Referenced	3	5.5	40.0
Testing: Criterion Referenced	1	1.8	41.8
Testing: Testing Out	1	1.8	43.6
Testing: Pre/Post	7	12.7	56.4
Testing: Teacher Designed	10	18.2	74.5
SubjAssess: Anecdotal/Docs	4	7.3	81.8
SubjAssess: Parent Conf.	3	5.5	87.3
SubjAssess: Mentor/Teach. Conf.	1	1.8	89.1
SubjAssess: Teach./Student Narratives	2	3.6	92.7
SubjAssess: Written Feedback	1	1.8	94.5
SubjAssess: Staffing/Child Study Conf.	2	3.6	98.2
InvScalesObs: Inventories	1	1.8	100.0
Total	55	100.0	
MISSING	6		
Total	61		

**Table 22. Within-Class Instructional Differentiation of Accommodations  
Accountability Method: First Choice, Middle School.**

	Frequency	Percent	Cumulative Percent
AuthPerf: Portfolio	5	9.1	9.1
AuthPerf: Exhibitions	1	1.8	10.9
AuthPerf: Rubrics	9	16.4	27.3
Auth Perf: Competition Results	1	1.8	29.1
AuthPerf: Independent Study	3	5.5	34.5
Testing-Mastery-Learning	1	1.8	36.4
Testing: Norm-Referenced	1	1.8	38.2
Testing: Criterion Referenced	2	3.6	41.8
Testing: Testing Out	1	1.8	43.6
Testing: Pre/Post	6	10.9	54.5
Testing: Teacher Designed	10	18.2	72.7
SubjAssess: Anecdotal/Docs	4	7.3	80.0
SubjAssess: Parent Conf.	4	7.3	87.3
SubjAssess: Mentor/Teach. Conf.	3	5.5	92.7
SubjAssess: Teach./Student Narratives	2	3.6	96.4
SubjAssess: Staffing/Child Study Conf.	1	1.8	98.2
InvScalesObs: Inventories	1	1.8	100.0
Total	55	100.0	
MISSING	6		
Total	61		



**Table 23. Within-Class Instructional Differentiation of Accommodations  
Accountability Method: First Choice, High School.**

	Frequency	Percent	Cumulative Percent
AuthPerf: Portfolio	4	8.3	8.3
AuthPerf: Exhibitions	2	4.2	12.5
AuthPerf: Rubrics	6	12.5	25.0
Auth Perf: Competition Results	1	2.1	27.1
AuthPerf: Independent Study	2	4.2	31.3
AuthPerf: Admission to Prog.	2	4.2	35.4
Testing: Norm-Referenced	1	2.1	37.5
Testing: Criterion Referenced	1	2.1	39.6
Testing: Pre/Post	5	10.4	50.0
Testing: Teacher Designed	12	25.0	75.0
SubjAssess: Anecdotal/Docs	2	4.2	79.2
SubjAssess: Parent Conf.	3	6.3	85.4
SubjAssess: Mentor/Teach. Conf.	3	6.3	91.7
SubjAssess: Written Feedback	1	2.1	93.8
SubjAssess: Staffing/Child Study Conf.	2	4.2	97.9
InvScalesObs: Inventories	1	2.1	100.0
Total	48	100.0	
MISSING	13		
Total	61		

### D. Grouping for Instruction and Activities

**Table 24. Grouping for Instruction and Activities Programming Type: First Choice,  
Elementary School.**

	Frequency	Percent	Cumulative Percent
MISSING	8	13.1	13.1
401. Ability or achievement grouping	36	59.0	72.1
402. Cluster grouping	9	14.8	86.9
403. Interest grouping	2	3.3	90.2
404. Cross-age, multi-age grouping	2	3.3	93.4
405. Clustering of talented students	4	6.6	100.0
Total	61	100.0	

**Table 25. Grouping for Instruction and Activities Programming Type: First Choice, Middle School.**

	Frequency	Percent	Cumulative Percent
MISSING	9	14.8	14.8
401. Ability or achievement grouping	35	57.4	72.1
402. Cluster grouping	6	9.8	82.0
403. Interest grouping	5	8.2	90.2
404. Cross-age, multi-age grouping	1	1.6	91.8
405. Clustering of talented students	5	8.2	100.0
Total	61	100.0	

**Table 26. Grouping for Instruction and Activities Programming Type: First Choice, High School.**

	Frequency	Percent	Cumulative Percent
MISSING	12	19.7	19.7
401. Ability or achievement grouping	31	50.8	70.5
402. Cluster grouping	5	8.2	78.7
403. Interest grouping	5	8.2	86.9
404. Cross-age, multi-age grouping	3	4.9	91.8
405. Clustering of talented students	5	8.2	100.0
Total	61	100.0	

**Table 27. Grouping for Instruction and Activities Accountability Method: First Choice, Elementary School.**

	Frequency	Percent	Cumulative Percent
AuthPerf: Portfolio	2	3.8	3.8
AuthPerf: Rubrics	1	1.9	5.7
AuthPerf: Independent Study	1	1.9	7.5
AuthPerf: Admission to Prog.	3	5.7	13.2
Testing-Mastery-Learning	4	7.5	20.8
Testing: Norm-Referenced	8	15.1	35.8
Testing: Criterion Referenced	7	13.2	49.1
Testing: Out-of-Level	1	1.9	50.9
Testing: Pre/Post	9	17.0	67.9
Testing: Teacher Designed	9	17.0	84.9
SubjAssess: Anecdotal/Docs	2	3.8	88.7
SubjAssess: Parent Conf.	1	1.9	90.6
SubjAssess: Mentor/Teach. Conf.	1	1.9	92.5
SubjAssess: Teach./Student Narratives	2	3.8	96.2
InvScalesObs: Checklists	1	1.9	98.1
RefEval: Self Evaluation	1	1.9	100.0
Total	53	100.0	
MISSING	8		
Total	61		

**Table 28. Grouping for Instruction and Activities Accountability Method: First Choice, Middle School.**

	Frequency	Percent	Cumulative Percent
AuthPerf: Portfolio	2	3.8	3.8
AuthPerf: Rubrics	3	5.8	9.6
AuthPerf: Admission to Prog.	6	11.5	21.2
Testing: Exams	1	1.9	23.1
Testing-Mastery-Learning	3	5.8	28.8
Testing: Norm-Referenced	8	15.4	44.2
Testing: Criterion Referenced	6	11.5	55.8
Testing: Out-of-Level	1	1.9	57.7
Testing: Pre/Post	8	15.4	73.1
Testing: Teacher Designed	9	17.3	90.4
SubjAssess: Anecdotal/Docs	1	1.9	92.3
InvScalesObs: Checklists	1	1.9	94.2
InvScalesObs: Surveys/Appraisals	1	1.9	96.2
RefEval: Self Evaluation	2	3.8	100.0
Total	52	100.0	
MISSING	9		
Total	61		

**Table 29. Grouping for Instruction and Activities Accountability Method: First Choice, High School.**

	Frequency	Percent	Cumulative Percent
AuthPerf: Portfolio	1	2.0	2.0
AuthPerf: Exhibitions	1	2.0	4.1
AuthPerf: Rubrics	5	10.2	14.3
AuthPerf: Admission to Prog.	2	4.1	18.4
AuthPerf: Diploma/Cert.	1	2.0	20.4
Testing: Exams	4	8.2	28.6
Testing-Mastery-Learning	5	10.2	38.8
Testing: Norm-Referenced	5	10.2	49.0
Testing: Criterion Referenced	5	10.2	59.2
Testing: Out-of-Level	1	2.0	61.2
Testing: Pre/Post	6	12.2	73.5
Testing: Teacher Designed	5	10.2	83.7
SubjAssess: Anecdotal/Docs	1	2.0	85.7
SubjAssess: Mentor/Teach. Conf.	1	2.0	87.8
SubjAssess: Teach./Student Narratives	1	2.0	89.8
SubjAssess: Staffing/Child Study Conf.	2	4.1	93.9
InvScalesObs: Inventories	1	2.0	95.9
InvScalesObs: Rating Scales	1	2.0	98.0
InvScalesObs: Surveys/Appraisals	1	2.0	100.0
Total	49	100.0	
MISSING	12		
Total	61		

### E. Acceleration in Student Placement

**Table 30. Acceleration in Student Placement Programming Type: First Choice, Elementary School.**

	Frequency	Percent	Cumulative Percent
MISSING	8	13.1	13.1
501. Grade skipping	5	8.2	21.3
502. Content acceleration	47	77.0	98.4
505. Telescoping	1	1.6	100.0
Total	61	100.0	

**Table 31. Acceleration in Student Placement Programming Type: First Choice, Middle School.**

	Frequency	Percent	Cumulative Percent
MISSING	10	16.4	16.4
501. Grade skipping	2	3.3	19.7
502. Content acceleration	48	78.7	98.4
505. Telescoping	1	1.6	100.0
Total	61	100.0	

**Table 32. Acceleration in Student Placement Programming Type: First Choice, High School.**

	Frequency	Percent	Cumulative Percent
MISSING	10	16.4	16.4
501. Grade skipping	2	3.3	19.7
502. Content acceleration	25	41.0	60.7
503. Post-secondary enrollment options	18	29.5	90.2
504. Advanced Placement before grade 11	5	8.2	98.4
507. Early graduation	1	1.6	100.0
Total	61	100.0	

**Table 33. Acceleration in Student Placement Accountability Method: First Choice, Elementary School.**

	Frequency	Percent	Cumulative Percent
AuthPerf: Portfolio	1	1.9	1.9
AuthPerf: Exhibitions	1	1.9	3.8
AuthPerf: Rubrics	3	5.7	9.4
AuthPerf: Admission to Prog.	1	1.9	11.3
Testing-Mastery-Learning	12	22.6	34.0
Testing: Norm-Referenced	3	5.7	39.6
Testing: Criterion Referenced	4	7.5	47.2
Testing: Testing Out	2	3.8	50.9
Testing: Out-of-Level	2	3.8	54.7
Testing: Pre/Post	11	20.8	75.5
Testing: Teacher Designed	5	9.4	84.9
SubjAssess: Case Study	1	1.9	86.8
SubjAssess: Parent Conf.	2	3.8	90.6
SubjAssess: Teach./Student Narratives	1	1.9	92.5
SubjAssess: Staffing/Child Study Conf.	1	1.9	94.3
InvScalesObs: Rating Scales	2	3.8	98.1
RefEval: Parent Evaluation	1	1.9	100.0
Total	53	100.0	
MISSING	8		
Total	61		

**Table 34. Acceleration in Student Placement Accountability Method: First Choice, Middle School.**

	Frequency	Percent	Cumulative Percent
AuthPerf: Portfolio	1	2.0	2.0
AuthPerf: Exhibitions	1	2.0	3.9
AuthPerf: Rubrics	2	3.9	7.8
AuthPerf: Admission to Prog.	2	3.9	11.8
Testing-Mastery-Learning	12	23.5	35.3
Testing: Norm-Referenced	5	9.8	45.1
Testing: Criterion Referenced	4	7.8	52.9
Testing: Testing Out	3	5.9	58.8
Testing: Out-of-Level	3	5.9	64.7
Testing: Pre/Post	9	17.6	82.4
Testing: Teacher Designed	5	9.8	92.2
SubjAssess: Parent Conf.	1	2.0	94.1
SubjAssess: Learning Logs/Journals	1	2.0	96.1
SubjAssess: Teach./Student Narratives	1	2.0	98.0
RefEval: Parent Evaluation	1	2.0	100.0
Total	51	100.0	
MISSING	10		
Total	61		

**Table 35. Acceleration in Student Placement Accountability Method: First Choice, High School.**

	Frequency	Percent	Cumulative Percent
AuthPerf: Admission to Prog.	6	20.0	20.0
AuthPerf: Awards/Honors	1	3.3	23.3
AuthPerf: Diploma/Cert.	5	16.7	40.0
Testing: Exams	3	10.0	50.0
Testing-Mastery-Learning	3	10.0	60.0
Testing: Norm-Referenced	1	3.3	63.3
Testing: Criterion Referenced	2	6.7	70.0
Testing: Testing Out	2	6.7	76.7
Testing: Out-of-Level	2	6.7	83.3
Testing: Pre/Post	1	3.3	86.7
Testing: Teacher Designed	1	3.3	90.0
SubjAssess: Anecdotal/Docs	2	6.7	96.7
InvScalesObs: Rating Scales	1	3.3	100.0
Total	30	100.0	
MISSING	31		
Total	61		

## F. Affective Programming

**Table 36. Affective Programming Type: First Choice, Elementary School.**

	Frequency	Percent	Cumulative Percent
MISSING	11	18.0	18.0
601. Guidance/counseling programs	36	59.0	77.0
604. Leadership programming/camps	7	11.5	88.5
605. Autonomous Learner Model	5	8.2	96.7
606. Infusion of Identify Parallel in content	2	3.3	100.0
Total	61	100.0	

**Table 37. Affective Programming Type: First Choice, Middle School.**

	Frequency	Percent	Cumulative Percent
MISSING	7	11.5	11.5
601. Guidance/counseling programs	36	59.0	70.5
603. Career planning	4	6.6	77.0
604. Leadership programming/camps	10	16.4	93.4
605. Autonomous Learner Model	3	4.9	98.4
606. Infusion of Identify Parallel in content	1	1.6	100.0
Total	61	100.0	

**Table 38. Affective Programming Type: First Choice, High School.**

	Frequency	Percent	Cumulative Percent
MISSING	10	16.4	16.4
601. Guidance/counseling programs	27	44.3	60.7
602. Advanced college planning	11	18.0	78.7
603. Career planning	4	6.6	85.2
604. Leadership programming/camps	7	11.5	96.7
605. Autonomous Learner Model	2	3.3	100.0
Total	61	100.0	

**Table 39. Affective Programming Accountability Method: First Choice, Elementary School.**

	Frequency	Percent	Cumulative Percent
AuthPerf: Rubrics	3	6.1	6.1
AuthPerf: Independent Study	1	2.0	8.2
AuthPerf: Admission to Prog.	2	4.1	12.2
Testing-Mastery-Learning	1	2.0	14.3
Testing: Teacher Designed	1	2.0	16.3
SubjAssess: Anecdotal/Docs	11	22.4	38.8
SubjAssess: Parent Conf.	2	4.1	42.9
SubjAssess: Mentor/Teach. Conf.	2	4.1	46.9
SubjAssess: Interviews	6	12.2	59.2
SubjAssess: Learning Logs/Journals	2	4.1	63.3
SubjAssess: Teach./Student Narratives	2	4.1	67.3
SubjAssess: Staffing/Child Study Conf.	3	6.1	73.5
InvScalesObs: Questionnaires	1	2.0	75.5
InvScalesObs: Surveys/Appraisals	5	10.2	85.7
RefEval: Self Evaluation	7	14.3	100.0
Total	49	100.0	
MISSING	12		
Total	61		



**Table 40. Affective Programming Accountability Method: First Choice, Middle School.**

	Frequency	Percent	Cumulative Percent
AuthPerf: Portfolio	1	1.9	1.9
AuthPerf: Exhibitions	1	1.9	3.8
AuthPerf: Rubrics	3	5.7	9.4
AuthPerf: Admission to Prog.	4	7.5	17.0
Testing: Teacher Designed	1	1.9	18.9
SubjAssess: Anecdotal/Docs	12	22.6	41.5
SubjAssess: Parent Conf.	3	5.7	47.2
SubjAssess: Mentor/Teach. Conf.	4	7.5	54.7
SubjAssess: Interviews	5	9.4	64.2
SubjAssess: Learning Logs/Journals	3	5.7	69.8
SubjAssess: Teach./Student Narratives	2	3.8	73.6
SubjAssess: Staffing/Child Study Conf.	2	3.8	77.4
InvScalesObs: Inventories	1	1.9	79.2
InvScalesObs: Questionnaires	1	1.9	81.1
InvScalesObs: Surveys/Appraisals	4	7.5	88.7
RefEval: Self Evaluation	6	11.3	100.0
Total	53	100.0	
MISSING	8		
Total	61		

**Table 41. Affective Programming Accountability Method: First Choice, High School.**

	Frequency	Percent	Cumulative Percent
AuthPerf: Portfolio	1	2.0	2.0
AuthPerf: Juried Presentations	1	2.0	4.0
AuthPerf: Admission to Prog.	1	2.0	6.0
AuthPerf: Awards/Honors	1	2.0	8.0
Testing-Mastery-Learning	1	2.0	10.0
Testing: Norm-Referenced	2	4.0	14.0
Testing: Teacher Designed	1	2.0	16.0
SubjAssess: Anecdotal/Docs	11	22.0	38.0
SubjAssess: Parent Conf.	2	4.0	42.0
SubjAssess: Mentor/Teach. Conf.	6	12.0	54.0
SubjAssess: Interviews	4	8.0	62.0
SubjAssess: Learning Logs/Journals	1	2.0	64.0
SubjAssess: Teach./Student Narratives	1	2.0	66.0
SubjAssess: Staffing/Child Study Conf.	3	6.0	72.0
InvScalesObs: Inventories	2	4.0	76.0
InvScalesObs: Rating Scales	1	2.0	78.0
InvScalesObs: Surveys/Appraisals	5	10.0	88.0
RefEval: Self Evaluation	5	10.0	98.0
RefEval: Parent Evaluation	1	2.0	100.0
Total	50	100.0	
MISSING	11		
Total	61		

## G. Independent Studies and Mentors

**Table 42. Independent Studies and Mentors Programming Type: First Choice, Elementary School.**

	Frequency	Percent	Cumulative Percent
MISSING	15	24.6	24.6
801. Independent study class	2	3.3	27.9
802. In-depth study	9	14.8	42.6
803. Individual projects	33	54.1	96.7
804. Mentorship	2	3.3	100.0
Total	61	100.0	

**Table 43. Independent Studies and Mentors Programming Type: First Choice, Middle School.**

	Frequency	Percent	Cumulative Percent
MISSING	15	24.6	24.6
801. Independent study class	5	8.2	32.8
802. In-depth study	8	13.1	45.9
803. Individual projects	31	50.8	96.7
804. Mentorship	2	3.3	100.0
Total	61	100.0	

**Table 44. Independent Studies and Mentors Programming Type: First Choice, High School.**

	Frequency	Percent	Cumulative Percent
MISSING	16	26.2	26.2
801. Independent study class	15	24.6	50.8
802. In-depth study	9	14.8	65.6
803. Individual projects	16	26.2	91.8
804. Mentorship	4	6.6	98.4
805. Internship	1	1.6	100.0
Total	61	100.0	

**Table 45. Independent Studies and Mentors Programming Type: First Choice, Elementary School.**

	Frequency	Percent	Cumulative Percent
AuthPerf: Portfolio	2	4.3	4.3
AuthPerf: Exhibitions	7	15.2	19.6
AuthPerf: Juried Presentations	1	2.2	21.7
AuthPerf: Rubrics	18	39.1	60.9
AuthPerf: Independent Study	3	6.5	67.4
AuthPerf: Admission to Prog.	1	2.2	69.6
Testing-Mastery-Learning	1	2.2	71.7
Testing: Pre/Post	1	2.2	73.9
Testing: Teacher Designed	2	4.3	78.3
SubjAssess: Anecdotal/Docs	1	2.2	80.4
SubjAssess: Mentor/Teach. Conf.	4	8.7	89.1
SubjAssess: Learning Logs/Journals	2	4.3	93.5
SubjAssess: Teach./Student Narratives	1	2.2	95.7
SubjAssess: Written Feedback	1	2.2	97.8
RefEval: Self Evaluation	1	2.2	100.0
Total	46	100.0	
MISSING	15		
Total	61		

**Table 46. Independent Studies and Mentors Accountability Method: First Choice, Middle School.**

	Frequency	Percent	Cumulative Percent
AuthPerf: Portfolio	5	10.9	10.9
AuthPerf: Exhibitions	7	15.2	26.1
AuthPerf: Juried Presentations	1	2.2	28.3
AuthPerf: Rubrics	15	32.6	60.9
AuthPerf: Independent Study	3	6.5	67.4
AuthPerf: Admission to Prog.	2	4.3	71.7
AuthPerf: Awards/Honors	1	2.2	73.9
Testing-Mastery-Learning	3	6.5	80.4
Testing: Teacher Designed	1	2.2	82.6
SubjAssess: Anecdotal/Docs	1	2.2	84.8
SubjAssess: Parent Conf.	1	2.2	87.0
SubjAssess: Mentor/Teach. Conf.	3	6.5	93.5
SubjAssess: Learning Logs/Journals	2	4.3	97.8
SubjAssess: Written Feedback	1	2.2	100.0
Total	46	100.0	
System	15		
Total	61		

**Table 47. Independent Studies and Mentors Accountability Method: First Choice, High School.**

	Frequency	Percent	Cumulative Percent
AuthPerf: Portfolio	3	6.7	6.7
AuthPerf: Exhibitions	3	6.7	13.3
AuthPerf: Juried Presentations	1	2.2	15.6
AuthPerf: Rubrics	10	22.2	37.8
AuthPerf: Independent Study	3	6.7	44.4
AuthPerf: Admission to Prog.	2	4.4	48.9
Testing-Mastery-Learning	3	6.7	55.6
Testing: Pre/Post	2	4.4	60.0
Testing: Teacher Designed	6	13.3	73.3
SubjAssess: Anecdotal/Docs	3	6.7	80.0
SubjAssess: Parent Conf.	1	2.2	82.2
SubjAssess: Mentor/Teach. Conf.	6	13.3	95.6
SubjAssess: Interviews	1	2.2	97.8
RefEval: Self Evaluation	1	2.2	100.0
Total	45	100.0	
MISSING	16		
Total	61		

## H. Gifted and Talented Enrichment

**Table 48. Gifted and Talented Enrichment Programming Type: First Choice, Elementary School.**

	Frequency	Percent	Cumulative Percent
MISSING	5	8.2	8.2
701. Classroom in-depth enrichment	23	37.7	45.9
702. Before or after school, Saturday	11	18.0	63.9
703. Field trips and off-campus	3	4.9	68.9
705. Summer school programs	1	1.6	70.5
707. Extra-curricular programs	1	1.6	72.1
709. Competitions	5	8.2	80.3
710. Imported Programs	12	19.7	100.0
Total	61	100.0	

**Table 49. Gifted and Talented Enrichment Programming Type: First Choice, Middle School.**

	Frequency	Percent	Cumulative Percent
MISSING	8	13.1	13.1
701. Classroom in-depth enrichment	18	29.5	42.6
702. Before or after school, Saturday	2	3.3	45.9
703. Field trips and off-campus	5	8.2	54.1
705. Summer school programs	2	3.3	57.4
707. Extra-curricular programs	5	8.2	65.6
709. Competitions	6	9.8	75.4
710. Imported Programs	15	24.6	100.0
Total	61	100.0	

**Table 50. Gifted and Talented Enrichment Programming Type: First Choice, High School.**

	Frequency	Percent	Cumulative Percent
MISSING	11	18.0	18.0
701. Classroom in-depth enrichment	12	19.7	37.7
702. Before or after school, Saturday	1	1.6	39.3
703. Field trips and off-campus	5	8.2	47.5
706. College sponsored programs	3	4.9	52.5
707. Extra-curricular programs	7	11.5	63.9
709. Competitions	8	13.1	77.0
710. Imported Programs	14	23.0	100.0
Total	61	100.0	

**Table 51. Gifted and Talented Enrichment Accountability Method: First Choice, Elementary School.**

	Frequency	Percent	Cumulative Percent
AuthPerf: Portfolio	3	5.5	5.5
AuthPerf: Exhibitions	4	7.3	12.7
AuthPerf: Rubrics	11	20.0	32.7
Auth Perf: Competition Results	8	14.5	47.3
AuthPerf: Admission to Prog.	2	3.6	50.9
AuthPerf: Awards/Honors	2	3.6	54.5
Testing-Mastery-Learning	1	1.8	56.4
Testing: Norm-Referenced	1	1.8	58.2
Testing: Teacher Designed	3	5.5	63.6
SubjAssess: Anecdotal/Docs	4	7.3	70.9
SubjAssess: Parent Conf.	2	3.6	74.5
SubjAssess: Mentor/Teach. Conf.	1	1.8	76.4
SubjAssess: Interviews	1	1.8	78.2
SubjAssess: Learning Logs/Journals	2	3.6	81.8
SubjAssess: Written Feedback	1	1.8	83.6
InvScalesObs: Checklists	1	1.8	85.5
InvScalesObs: Rating Scales	2	3.6	89.1
InvScalesObs: Questionnaires	1	1.8	90.9
InvScalesObs: Surveys/Appraisals	2	3.6	94.5
RefEval: Self Evaluation	2	3.6	98.2
RefEval: Parent Evaluation	1	1.8	100.0
Total	55	100.0	
MISSING	6		
Total	61		

**Table 52. Gifted and Talented Enrichment Accountability Method: First Choice, Middle School.**

	Frequency	Percent	Cumulative Percent
AuthPerf: Portfolio	2	3.8	3.8
AuthPerf: Exhibitions	3	5.8	9.6
AuthPerf: Juried Presentations	2	3.8	13.5
AuthPerf: Rubrics	8	15.4	28.8
Auth Perf: Competition Results	11	21.2	50.0
AuthPerf: Awards/Honors	5	9.6	59.6
Testing-Mastery-Learning	1	1.9	61.5
Testing: Pre/Post	4	7.7	69.2
Testing: Teacher Designed	4	7.7	76.9
SubjAssess: Anecdotal/Docs	5	9.6	86.5
SubjAssess: Parent Conf.	1	1.9	88.5
SubjAssess: Interviews	1	1.9	90.4
SubjAssess: Learning Logs/Journals	1	1.9	92.3
InvScalesObs: Questionnaires	1	1.9	94.2
InvScalesObs: Surveys/Appraisals	3	5.8	100.0
Total	52	100.0	
MISSING	9		
Total	61		

**Table 53. Gifted and Talented Enrichment Accountability Method: First Choice, High School.**

	Frequency	Percent	Cumulative Percent
AuthPerf: Portfolio	1	2.0	2.0
AuthPerf: Exhibitions	2	4.0	6.0
AuthPerf: Juried Presentations	2	4.0	10.0
AuthPerf: Rubrics	3	6.0	16.0
Auth Perf: Competition Results	13	26.0	42.0
AuthPerf: Awards/Honors	4	8.0	50.0
Testing-Mastery-Learning	1	2.0	52.0
Testing: Teacher Designed	7	14.0	66.0
SubjAssess: Anecdotal/Docs	6	12.0	78.0
SubjAssess: Parent Conf.	1	2.0	80.0
SubjAssess: Mentor/Teach. Conf.	1	2.0	82.0
SubjAssess: Interviews	2	4.0	86.0
SubjAssess: Teach./Student Narratives	2	4.0	90.0
InvScalesObs: Surveys/Appraisals	3	6.0	96.0
RefEval: Self Evaluation	1	2.0	98.0
RefEval: Parent Evaluation	1	2.0	100.0
Total	50	100.0	
MISSING	11		
Total	61		

