

**Gifted and Talented Student Education Funds
End-of-Year Report**

FY2005 (2004-2005)

I. Demographic Results

- ❖ **Total number of gifted and talented students formally identified in the district or BOCES as of the last day of the school year: 52,314.**

Figure 1. Number of Gifted Talented Students by Grade.

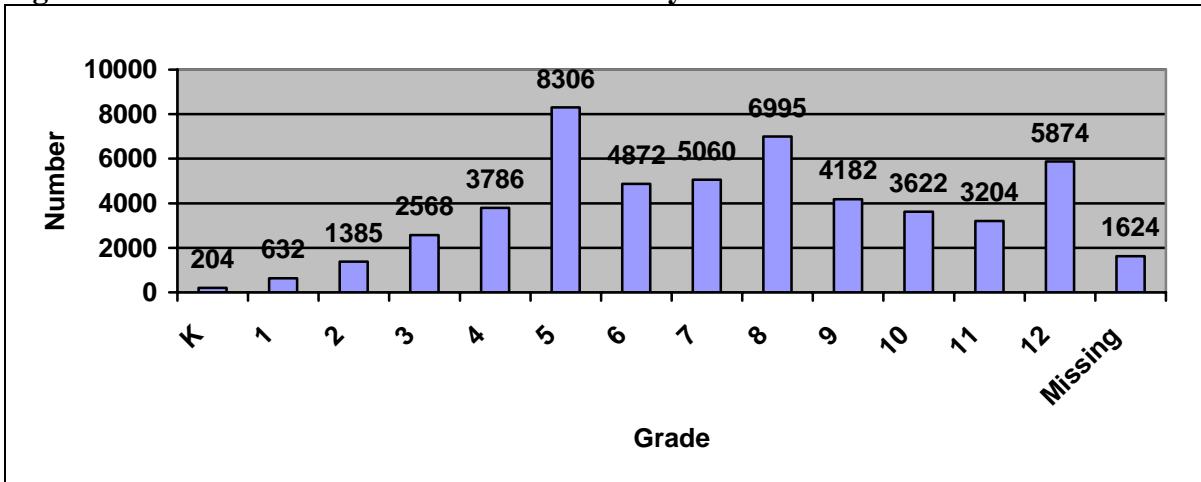


Figure 2. Ethnicity Breakdown for State Enrollment and Gifted/Talented.

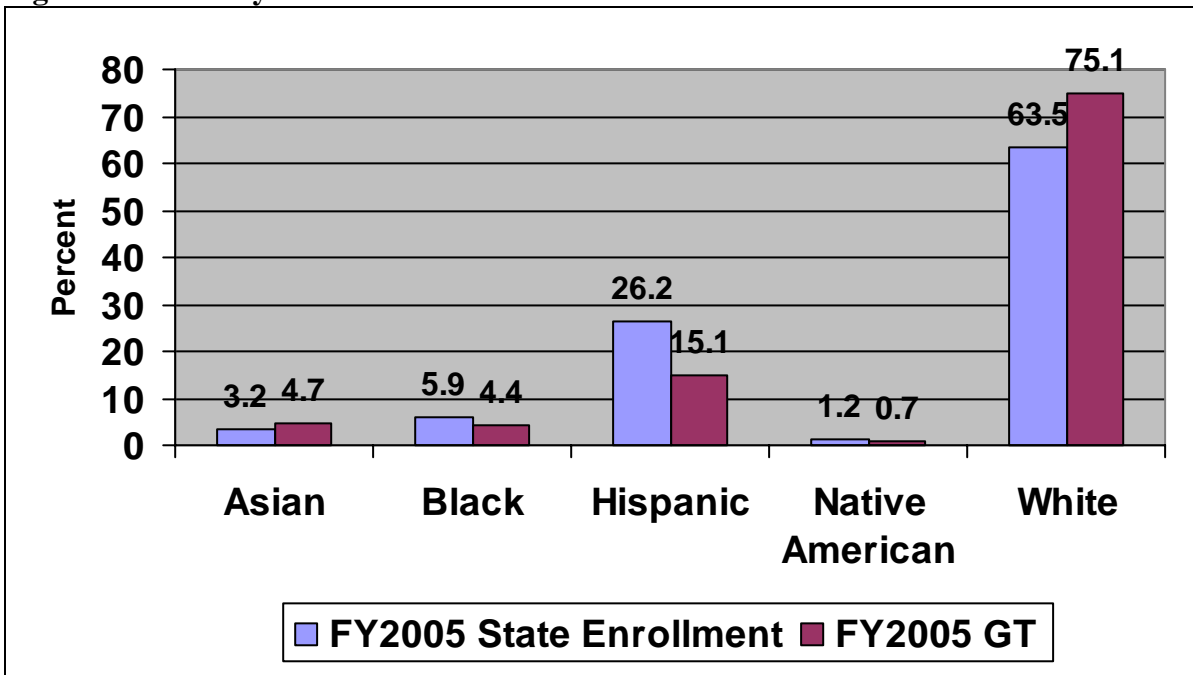


Table 1. Gender Breakdown GT 2004-2005.

	Number	Percent
Female	26,555	49%
Male	27,652	51%
Total	54,207	100%

- ❖ **Total number of non-identified students that were served by gifted-education programming plus number of identified students: 83,504**
- ❖ **Total number of twice exceptional students: 961**
- ❖ **Total number of early G/T kindergarten entrants (age 4 at start of 04-05 school year): 14**

Table 2. Percent of Enrolled Students Identified for GT.

	2004-2005	2003-2004
Mean	6.4%	7.6%
Median	6.2%	6.2%
Standard Deviation	4.0%	7.7%
Minimum	0%	0%
Maximum	19%	50%

Figure 4. Local GT Expenditures - FY04-05.

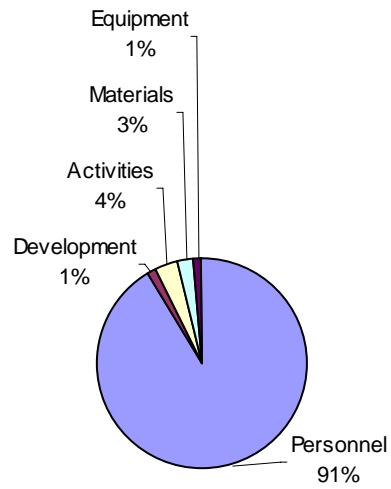
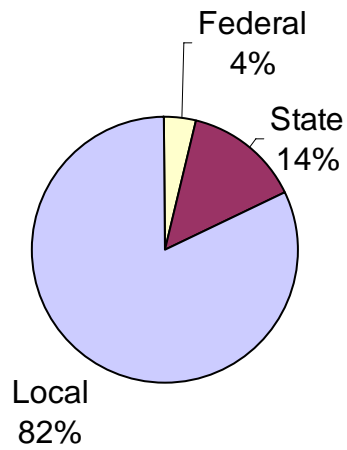


Figure 5. Total GT Funding - FY04-05.



III. Programming and Accountability Report Results

A. Delivery Model

Table 5. Delivery Model Programming Type: First Choice, Elementary School.

	Frequency	Percent	Cumulative Percent
107. Inclusion - in the regular classroom	24	46.2	46.2
105. Pull-out classes	18	34.6	80.8
104. Special Classes or seminars	4	7.7	88.5
102. Magnet Program (within a school)	3	5.8	94.2
101. School for gifted students	1	1.9	96.2
106. Consultation and/or coaching	1	1.9	98.1
103. Resource center programs	1	1.9	100.0
Total	52	100.0	

Table 6. Delivery Model Programming Type: First Choice, Middle School.

	Frequency	Percent	Cumulative Percent
107. Inclusion - in the regular classroom	31	59.6	59.6
104. Special Classes or seminars	6	11.5	71.2
105. Pull-out classes	5	9.6	80.8
102. Magnet Program (within a school)	4	7.7	88.5
106. Consultation and/or coaching	3	5.8	94.2
101. School for gifted students	1	1.9	96.2
>> NOTHING CHOSEN <<	1	1.9	98.1
103. Resource center programs	1	1.9	100.0
Total	52	100.0	

Table 7. Delivery Model Programming Type: First Choice, High School.

	Frequency	Percent	Cumulative Percent
107. Inclusion - in the regular classroom	28	53.8	53.8
104. Special Classes or seminars	18	34.6	88.5
106. Consultation and/or coaching	3	5.8	94.2
>> NOTHING CHOSEN <<	1	1.9	96.2
101. School for gifted students	1	1.9	98.1
102. Magnet Program (within a school)	1	1.9	100.0
Total	52	100.0	

Table 8. Delivery Model Accountability Method: First Choice, Elementary School.

	Frequency	Percent	Cumulative Percent
AuthPerf: Rubrics	12	23.1	23.1
AuthPerf: Portfolio	8	15.4	38.5
Testing: Norm-Referenced	6	11.5	50.0
Testing: Pre/Post	5	9.6	59.6
AuthPerf: Admission to Prog.	4	7.7	67.3
Testing: Criterion Referenced	3	5.8	73.1
SubjAssess: Anecdotal/Docs	3	5.8	78.8
AuthPerf: Exhibitions	2	3.8	82.7
AuthPerf: Independent Study	2	3.8	86.5
Testing: Teacher Designed	2	3.8	90.4
Testing-Mastery-Learning	1	1.9	92.3
Testing: Out-of-Level	1	1.9	94.2
SubjAssess: Parent Conf.	1	1.9	96.2
SubjAssess: Written Feedback	1	1.9	98.1
RefEval: Self Evaluation	1	1.9	100.0
Total	52	100.0	

Table 9. Delivery Model Accountability Method: First Choice, Middle School.

	Frequency	Percent	Cumulative Percent
Testing: Teacher Designed	9	17.3	17.6
AuthPerf: Rubrics	6	11.5	29.4
Testing: Norm-Referenced	5	9.6	39.2
Testing: Pre/Post	5	9.6	49.0
AuthPerf: Portfolio	3	5.8	54.9
AuthPerf: Exhibitions	3	5.8	60.8
AuthPerf: Independent Study	3	5.8	66.7
Testing: Criterion Referenced	3	5.8	72.5
AuthPerf: Admission to Prog.	2	3.8	76.5
Testing-Mastery-Learning	2	3.8	80.4
Testing: Out-of-Level	2	3.8	84.3
SubjAssess: Anecdotal/Docs	2	3.8	88.2
SubjAssess: Mentor/Teach. Conf.	2	3.8	92.2
Testing: Exams	1	1.9	94.1
SubjAssess: Learning Logs/Journals	1	1.9	96.1
InvScalesObs: Inventories	1	1.9	98.0
InvScalesObs: Surveys/Appraisals	1	1.9	100.0
Total	51	98.1	
MISSING	1	1.9	
Total	52	100.0	

Table 10. Delivery Model Accountability Method: First Choice, High School.

	Frequency	Percent	Cumulative Percent
Testing: Teacher Designed	10	19.2	20.0
Testing: Exams	7	13.5	34.0
Testing: Norm-Referenced	6	11.5	46.0
AuthPerf: Portfolio	4	7.7	54.0
AuthPerf: Rubrics	4	7.7	62.0
Testing-Mastery-Learning	4	7.7	70.0
AuthPerf: Admission to Prog.	3	5.8	76.0
Testing: Criterion Referenced	3	5.8	82.0
Testing: Pre/Post	2	3.8	86.0
SubjAssess: Anecdotal/Docs	2	3.8	90.0
SubjAssess: Mentor/Teach. Conf.	2	3.8	94.0
AuthPerf: Exhibitions	1	1.9	96.0
AuthPerf: Juried Presentations	1	1.9	98.0
AuthPerf: Awards/Honors	1	1.9	100.0
Total	50	96.2	
MISSING	2	3.8	
Total	52	100.0	

B. Advanced Curriculum-Based Options

Table 11. Advanced Curriculum-Based Programming Type: First Choice, Elementary School.

	Frequency	Percent	Cumulative Percent
203. Advanced class in core area	31	59.6	59.6
205. Advanced skill development class	10	19.2	78.8
>> NOTHING CHOSEN <<	8	15.4	94.2
204. Advanced elective class	1	1.9	96.2
201. Honor Classes	1	1.9	98.1
202. Advanced placement classes	1	1.9	100.0
Total	52	100.0	

Table 12. Advanced Curriculum-Based Programming Type: First Choice, Middle School.

	Frequency	Percent	Cumulative Percent
203. Advanced class in core area	33	63.5	63.5
201. Honor Classes	7	13.5	76.9
>> NOTHING CHOSEN <<	3	5.8	82.7
205. Advanced skill development class	3	5.8	88.5
207. Autonomous Learner Class	2	3.8	92.3
204. Advanced elective class	2	3.8	96.2
202. Advanced placement classes	2	3.8	100.0
Total	52	100.0	

Table 13. Advanced Curriculum-Based Programming Type: First Choice, High School.

	Frequency	Percent	Cumulative Percent
202. Advanced placement classes	21	40.4	40.4
201. Honor Classes	20	38.5	78.8
203. Advanced class in core area	5	9.6	88.5
206. Advanced online classes	2	3.8	92.3
204. Advanced elective class	2	3.8	96.2
207. Autonomous Learner Class	1	1.9	98.1
205. Advanced skill development class	1	1.9	100.0
Total	52	100.0	

Table 14. Advanced Curriculum-Based Accountability Method: First Choice, Elementary School.

	Frequency	Percent	Cumulative Percent
Testing: Teacher Designed	11	21.2	25.0
Testing: Pre/Post	7	13.5	40.9
AuthPerf: Rubrics	6	11.5	54.5
Testing-Mastery-Learning	5	9.6	65.9
Testing: Criterion Referenced	4	7.7	75.0
AuthPerf: Portfolio	3	5.8	81.8
Testing: Norm-Referenced	3	5.8	88.6
AuthPerf: Exhibitions	2	3.8	93.2
Testing: Out-of-Level	2	3.8	97.7
Auth Perf: Competition Results	1	1.9	100.0
Total	44	84.6	
MISSING	8	15.4	
Total	52	100.0	

Table 15. Advanced Curriculum-Based Accountability Method: First Choice, Middle School.

	Frequency	Percent	Cumulative Percent
Testing: Teacher Designed	18	34.6	37.5
Testing-Mastery-Learning	6	11.5	50.0
Testing: Criterion Referenced	6	11.5	62.5
AuthPerf: Exhibitions	4	7.7	70.8
AuthPerf: Rubrics	4	7.7	79.2
Testing: Norm-Referenced	3	5.8	85.4
Testing: Exams	2	3.8	89.6
Testing: Out-of-Level	2	3.8	93.8
AuthPerf: Portfolio	1	1.9	95.8
AuthPerf: Admission to Prog.	1	1.9	97.9
Testing: Pre/Post	1	1.9	100.0
Total	48	92.3	
MISSING	4	7.7	
Total	52	100.0	

Table 16. Advanced Curriculum-Based Accountability Method: First Choice, High School.

	Frequency	Percent	Cumulative Percent
Testing: Exams	21	40.4	41.2
Testing: Teacher Designed	12	23.1	64.7
AuthPerf: Rubrics	4	7.7	72.5
Testing-Mastery-Learning	4	7.7	80.4
Testing: Criterion Referenced	3	5.8	86.3
AuthPerf: Admission to Prog.	2	3.8	90.2
Testing: Norm-Referenced	2	3.8	94.1
AuthPerf: Portfolio	1	1.9	96.1
AuthPerf: Juried Presentations	1	1.9	98.0
Testing: Out-of-Level	1	1.9	100.0
Total	51	98.1	
MISSING	1	1.9	
Total	52	100.0	

C. Within-Class Instructional Differentiation or Accommodations

**Table 17. Within-Class Instructional Differentiation of Accommodations
Programming Type: First Choice, Elementary School.**

	Frequency	Percent	Cumulative Percent
302. Alternative content/process/product	31	59.6	59.6
301. Curriculum compacting	8	15.4	75.0
305. Individualized plans (IEP, ALP, etc.)	6	11.5	86.5
304. Accommodations for strength areas	4	7.7	94.2
306. Pre-testing	2	3.8	98.1
307. Concept learning	1	1.9	100.0
Total	52	100.0	

**Table 18. Within-Class Instructional Differentiation of Accommodations
Programming Type: First Choice, Middle School.**

	Frequency	Percent	Cumulative Percent
302. Alternative content/process/product	34	65.4	65.4
301. Curriculum compacting	5	9.6	75.0
306. Pre-testing	4	7.7	82.7
305. Individualized plans (IEP, ALP, etc.)	3	5.8	88.5
304. Accommodations for strength areas	2	3.8	92.3
307. Concept learning	2	3.8	96.2
>> NOTHING CHOSEN <<	1	1.9	98.1
303. Contract learning	1	1.9	100.0
Total	52	100.0	

**Table 19. Within-Class Instructional Differentiation of Accommodations
Programming Type: First Choice, High School.**

	Frequency	Percent	Cumulative Percent
302. Alternative content/process/product	28	53.8	53.8
304. Accommodations for strength areas	7	13.5	67.3
305. Individualized plans (IEP, ALP, etc.)	5	9.6	76.9
301. Curriculum compacting	3	5.8	82.7
>> NOTHING CHOSEN <<	3	5.8	88.5
306. Pre-testing	3	5.8	94.2
303. Contract learning	2	3.8	98.1
307. Concept learning	1	1.9	100.0
Total	52	100.0	

**Table 20. Within-Class Instructional Differentiation of Accommodations
Accountability Method: First Choice, Elementary School.**

	Frequency	Percent	Cumulative Percent
AuthPerf: Rubrics	10	19.2	19.2
Testing: Teacher Designed	9	17.3	36.5
Testing: Pre/Post	6	11.5	48.1
Testing: Norm-Referenced	4	7.7	55.8
SubjAssess: Anecdotal/Docs	4	7.7	63.5
Testing-Mastery-Learning	3	5.8	69.2
SubjAssess: Staffing/Child Study Conf.	3	5.8	75.0
AuthPerf: Portfolio	2	3.8	78.8
AuthPerf: Independent Study	2	3.8	82.7
Testing: Testing Out	2	3.8	86.5
SubjAssess: Parent Conf.	2	3.8	90.4
AuthPerf: Exhibitions	1	1.9	92.3
AuthPerf: Juried Presentations	1	1.9	94.2
Testing: Criterion Referenced	1	1.9	96.2
SubjAssess: Mentor/Teach. Conf.	1	1.9	98.1
InvScalesObs: Questionnaires	1	1.9	100.0
Total	52	100.0	

**Table 21. Within-Class Instructional Differentiation of Accommodations
Accountability Method: First Choice, Middle School.**

	Frequency	Percent	Cumulative Percent
AuthPerf: Rubrics	11	21.2	21.6
Testing: Teacher Designed	10	19.2	41.2
Testing: Pre/Post	9	17.3	58.8
SubjAssess: Parent Conf.	4	7.7	66.7
Testing-Mastery-Learning	3	5.8	72.5
SubjAssess: Anecdotal/Docs	3	5.8	78.4
Testing: Criterion Referenced	2	3.8	82.4
Testing: Testing Out	2	3.8	86.3
AuthPerf: Portfolio	1	1.9	88.2
Auth Perf: Competition Results	1	1.9	90.2
AuthPerf: Independent Study	1	1.9	92.2
Testing: Norm-Referenced	1	1.9	94.1
SubjAssess: Mentor/Teach. Conf.	1	1.9	96.1
SubjAssess: Interviews	1	1.9	98.0
SubjAssess: Staffing/Child Study Conf.	1	1.9	100.0
Total	51	98.1	
MISSING	1	1.9	
Total	52	100.0	

Table 22. Within-Class Instructional Differentiation of Accommodations
Accountability Method: First Choice, High School.

	Frequency	Percent	Cumulative Percent
Testing: Teacher Designed	11	21.2	22.4
AuthPerf: Rubrics	8	15.4	38.8
SubjAssess: Anecdotal/Docs	5	9.6	49.0
Testing: Pre/Post	4	7.7	57.1
AuthPerf: Portfolio	3	5.8	63.3
Testing: Criterion Referenced	3	5.8	69.4
AuthPerf: Independent Study	2	3.8	73.5
AuthPerf: Admission to Prog.	2	3.8	77.6
Testing-Mastery-Learning	2	3.8	81.6
Testing: Norm-Referenced	2	3.8	85.7
Testing: Testing Out	2	3.8	89.8
SubjAssess: Staffing/Child Study Conf.	2	3.8	93.9
Testing: Out-of-Level	1	1.9	95.9
SubjAssess: Parent Conf.	1	1.9	98.0
SubjAssess: Mentor/Teach. Conf.	1	1.9	100.0
Total	49	94.2	
MISSING	3	5.8	
Total	52	100.0	

D. Grouping for Instruction and Activities

Table 23. Grouping for Instruction and Activities Programming Type: First Choice, Elementary School.

	Frequency	Percent	Cumulative Percent
401. Ability or achievement grouping	40	76.9	76.9
402. Cluster grouping	8	15.4	92.3
403. Interest grouping	2	3.8	96.2
404. Cross-age, multi-age grouping	1	1.9	98.1
405. Clustering of talented students	1	1.9	100.0
Total	52	100.0	

Table 24. Grouping for Instruction and Activities Programming Type: First Choice, Middle School.

	Frequency	Percent	Cumulative Percent
401. Ability or achievement grouping	39	75.0	75.0
402. Cluster grouping	6	11.5	86.5
405. Clustering of talented students	6	11.5	98.1
403. Interest grouping	1	1.9	100.0
Total	52	100.0	

Table 25. Grouping for Instruction and Activities Programming Type: First Choice, High School.

	Frequency	Percent	Cumulative Percent
401. Ability or achievement grouping	34	65.4	65.4
405. Clustering of talented students	7	13.5	78.8
404. Cross-age, multi-age grouping	4	7.7	86.5
403. Interest grouping	3	5.8	92.3
>> NOTHING CHOSEN <<	2	3.8	96.2
402. Cluster grouping	2	3.8	100.0
Total	52	100.0	

Table 26. Grouping for Instruction and Activities Accountability Method: First Choice, Elementary School.

	Frequency	Percent	Cumulative Percent
Testing: Teacher Designed	8	15.4	15.4
Testing: Norm-Referenced	7	13.5	28.8
Testing: Pre/Post	7	13.5	42.3
AuthPerf: Rubrics	5	9.6	51.9
AuthPerf: Admission to Prog.	5	9.6	61.5
Testing-Mastery-Learning	5	9.6	71.2
Testing: Criterion Referenced	5	9.6	80.8
SubjAssess: Parent Conf.	3	5.8	86.5
SubjAssess: Anecdotal/Docs	2	3.8	90.4
AuthPerf: Exhibitions	1	1.9	92.3
AuthPerf: Independent Study	1	1.9	94.2
Testing: Testing Out	1	1.9	96.2
InvScalesObs: Surveys/Appraisals	1	1.9	98.1
RefEval: Self Evaluation	1	1.9	100.0
Total	52	100.0	

Table 27. Grouping for Instruction and Activities Accountability Method: First Choice, Middle School.

	Frequency	Percent	Cumulative Percent
Testing: Norm-Referenced	9	17.3	17.3
Testing: Criterion Referenced	7	13.5	30.8
Testing: Pre/Post	7	13.5	44.2
Testing-Mastery-Learning	6	11.5	55.8
Testing: Teacher Designed	6	11.5	67.3
AuthPerf: Admission to Prog.	5	9.6	76.9
AuthPerf: Rubrics	4	7.7	84.6
AuthPerf: Exhibitions	1	1.9	86.5
Testing: Testing Out	1	1.9	88.5
SubjAssess: Anecdotal/Docs	1	1.9	90.4
SubjAssess: Parent Conf.	1	1.9	92.3
SubjAssess: Written Feedback	1	1.9	94.2
InvScalesObs: Inventories	1	1.9	96.2
InvScalesObs: Surveys/Appraisals	1	1.9	98.1
RefEval: Self Evaluation	1	1.9	100.0
Total	52	100.0	

Table 28. Grouping for Instruction and Activities Accountability Method: First Choice, High School.

	Frequency	Percent	Cumulative Percent
Testing-Mastery-Learning	8	15.4	16.0
AuthPerf: Admission to Prog.	6	11.5	28.0
Testing: Teacher Designed	6	11.5	40.0
Testing: Exams	5	9.6	50.0
Testing: Norm-Referenced	5	9.6	60.0
AuthPerf: Rubrics	4	7.7	68.0
Testing: Pre/Post	4	7.7	76.0
Testing: Criterion Referenced	3	5.8	82.0
Testing: Testing Out	2	3.8	86.0
InvScalesObs: Inventories	2	3.8	90.0
AuthPerf: Diploma/Cert.	1	1.9	92.0
Testing: Out-of-Level	1	1.9	94.0
SubjAssess: Anecdotal/Docs	1	1.9	96.0
SubjAssess: Interviews	1	1.9	98.0
InvScalesObs: Surveys/Appraisals	1	1.9	100.0
Total	50	96.2	
MISSING	2	3.8	
Total	52	100.0	

E. Acceleration in Student Placement

Table 29. Acceleration in Student Placement Programming Type: First Choice, Elementary School.

	Frequency	Percent	Cumulative Percent
502. Content acceleration	41	78.8	78.8
501. Grade skipping	6	11.5	90.4
>> NOTHING CHOSEN <<	3	5.8	96.2
506. Early placement in kindergarten	1	1.9	98.1
503. Post-secondary enrollment options	1	1.9	100.0
Total	52	100.0	

Table 30. Acceleration in Student Placement Programming Type: First Choice, Middle School.

	Frequency	Percent	Cumulative Percent
502. Content acceleration	41	78.8	78.8
>> NOTHING CHOSEN <<	7	13.5	92.3
501. Grade skipping	2	3.8	96.2
504. Advanced Placement before grade 11	2	3.8	100.0
Total	52	100.0	

Table 31. Acceleration in Student Placement Programming Type: First Choice, High School.

	Frequency	Percent	Cumulative Percent
503. Post-secondary enrollment options	23	44.2	44.2
502. Content acceleration	20	38.5	82.7
504. Advanced Placement before grade 11	6	11.5	94.2
>> NOTHING CHOSEN <<	2	3.8	98.1
507. Early graduation	1	1.9	100.0
Total	52	100.0	

Table 32. Acceleration in Student Placement Accountability Method: First Choice, Elementary School.

	Frequency	Percent	Cumulative Percent
Testing-Mastery-Learning	12	23.1	24.5
Testing: Pre/Post	11	21.2	46.9
Testing: Teacher Designed	7	13.5	61.2
AuthPerf: Rubrics	4	7.7	69.4
SubjAssess: Parent Conf.	4	7.7	77.6
Testing: Criterion Referenced	3	5.8	83.7
AuthPerf: Admission to Prog.	2	3.8	87.8
AuthPerf: Exhibitions	1	1.9	89.8
Testing: Testing Out	1	1.9	91.8
SubjAssess: Anecdotal/Docs	1	1.9	93.9
SubjAssess: Interviews	1	1.9	95.9
SubjAssess: Written Feedback	1	1.9	98.0
InvScalesObs: Rating Scales	1	1.9	100.0
Total	49	94.2	
MISSING	3	5.8	
Total	52	100.0	

Table 33. Acceleration in Student Placement Accountability Method: First Choice, Middle School.

	Frequency	Percent	Cumulative Percent
Testing-Mastery-Learning	11	21.2	24.4
Testing: Pre/Post	8	15.4	42.2
Testing: Teacher Designed	7	13.5	57.8
Testing: Criterion Referenced	5	9.6	68.9
Testing: Testing Out	5	9.6	80.0
AuthPerf: Rubrics	3	5.8	86.7
AuthPerf: Admission to Prog.	3	5.8	93.3
SubjAssess: Anecdotal/Docs	2	3.8	97.8
Testing: Norm-Referenced	1	1.9	100.0
Total	45	86.5	
MISSING	7	13.5	
Total	52	100.0	

Table 34. Acceleration in Student Placement Accountability Method: First Choice, High School.

	Frequency	Percent	Cumulative Percent
Testing: Teacher Designed	11	21.2	22.4
AuthPerf: Admission to Prog.	8	15.4	38.8
Testing: Testing Out	6	11.5	51.0
Testing: Pre/Post	5	9.6	61.2
Testing-Mastery-Learning	4	7.7	69.4
AuthPerf: Rubrics	3	5.8	75.5
Testing: Criterion Referenced	3	5.8	81.6
AuthPerf: Diploma/Cert.	2	3.8	85.7
Testing: Exams	2	3.8	89.8
Testing: Out-of-Level	2	3.8	93.9
Testing: Norm-Referenced	1	1.9	95.9
SubjAssess: Case Study	1	1.9	98.0
SubjAssess: Written Feedback	1	1.9	100.0
Total	49	94.2	
MISSING	3	5.8	
Total	52	100.0	

F. Affective Programming

Table 35. Affective Programming Type: First Choice, Elementary School.

	Frequency	Percent	Cumulative Percent
601. Guidance/counseling programs	30	57.7	57.7
604. Leadership programming/camps	8	15.4	73.1
605. Autonomous Learner Model	7	13.5	86.5
>> NOTHING CHOSEN <<	6	11.5	98.1
606. Infusion of Identify Parallel in content	1	1.9	100.0
Total	52	100.0	

Table 36. Affective Programming Type: First Choice, Middle School.

	Frequency	Percent	Cumulative Percent
601. Guidance/counseling programs	33	63.5	63.5
604. Leadership programming/camps	8	15.4	78.8
605. Autonomous Learner Model	4	7.7	86.5
>> NOTHING CHOSEN <<	3	5.8	92.3
603. Career planning	3	5.8	98.1
606. Infusion of Identify Parallel in content	1	1.9	100.0
Total	52	100.0	

Table 37. Affective Programming Type: First Choice, High School.

	Frequency	Percent	Cumulative Percent
601. Guidance/counseling programs	24	46.2	46.2
602. Advanced college planning	11	21.2	67.3
603. Career planning	6	11.5	78.8
604. Leadership programming/camps	5	9.6	88.5
>> NOTHING CHOSEN <<	4	7.7	96.2
605. Autonomous Learner Model	2	3.8	100.0
Total	52	100.0	

Table 38. Affective Programming Accountability Method: First Choice, Elementary School.

	Frequency	Percent	Cumulative Percent
SubjAssess: Anecdotal/Docs	8	15.4	17.8
InvScalesObs: Surveys/Appraisals	7	13.5	33.3
RefEval: Self Evaluation	6	11.5	46.7
SubjAssess: Parent Conf.	3	5.8	53.3
SubjAssess: Staffing/Child Study Conf.	3	5.8	60.0
Testing: Teacher Designed	2	3.8	64.4
SubjAssess: Mentor/Teach. Conf.	2	3.8	68.9
SubjAssess: Interviews	2	3.8	73.3
SubjAssess: Teach./Student Narratives	2	3.8	77.8
InvScalesObs: Questionnaires	2	3.8	82.2
AuthPerf: Portfolio	1	1.9	84.4
AuthPerf: Rubrics	1	1.9	86.7
AuthPerf: Independent Study	1	1.9	88.9
AuthPerf: Awards/Honors	1	1.9	91.1
SubjAssess: Learning Logs/Journals	1	1.9	93.3
SubjAssess: Written Feedback	1	1.9	95.6
InvScalesObs: Checklists	1	1.9	97.8
InvScalesObs: Inventories	1	1.9	100.0
Total	45	86.5	
MISSING	7	13.5	
Total	52	100.0	

Table 39. Affective Programming Accountability Method: First Choice, Middle School.

	Frequency	Percent	Cumulative Percent
SubjAssess: Anecdotal/Docs	8	15.4	16.7
InvScalesObs: Surveys/Appraisals	7	13.5	31.3
RefEval: Self Evaluation	6	11.5	43.8
InvScalesObs: Questionnaires	4	7.7	52.1
AuthPerf: Portfolio	3	5.8	58.3
AuthPerf: Rubrics	2	3.8	62.5
Testing: Teacher Designed	2	3.8	66.7
SubjAssess: Parent Conf.	2	3.8	70.8
SubjAssess: Mentor/Teach. Conf.	2	3.8	75.0
SubjAssess: Interviews	2	3.8	79.2
SubjAssess: Learning Logs/Journals	2	3.8	83.3
SubjAssess: Teach./Student Narratives	2	3.8	87.5
SubjAssess: Staffing/Child Study Conf.	2	3.8	91.7
AuthPerf: Awards/Honors	1	1.9	93.8
SubjAssess: Written Feedback	1	1.9	95.8
InvScalesObs: Checklists	1	1.9	97.9
InvScalesObs: Inventories	1	1.9	100.0
Total	48	92.3	
System	4	7.7	
Total	52	100.0	

Table 40. Affective Programming Accountability Method: First Choice, High School.

	Frequency	Percent	Cumulative Percent
InvScalesObs: Surveys/Appraisals	10	19.2	20.8
SubjAssess: Mentor/Teach. Conf.	8	15.4	37.5
SubjAssess: Anecdotal/Docs	7	13.5	52.1
SubjAssess: Staffing/Child Study Conf.	4	7.7	60.4
RefEval: Self Evaluation	4	7.7	68.8
AuthPerf: Portfolio	2	3.8	72.9
SubjAssess: Parent Conf.	2	3.8	77.1
InvScalesObs: Inventories	2	3.8	81.3
InvScalesObs: Questionnaires	2	3.8	85.4
AuthPerf: Rubrics	1	1.9	87.5
Testing: Exams	1	1.9	89.6
Testing: Teacher Designed	1	1.9	91.7
SubjAssess: Case Study	1	1.9	93.8
SubjAssess: Interviews	1	1.9	95.8
SubjAssess: Learning Logs/Journals	1	1.9	97.9
SubjAssess: Teach./Student Narratives	1	1.9	100.0
Total	48	92.3	
System	4	7.7	
Total	52	100.0	

G. Independent Studies and Mentors

Table 41. Independent Studies and Mentors Programming Type: First Choice, Elementary School.

	Frequency	Percent	Cumulative Percent
803. Individual projects	37	71.2	71.2
>> NOTHING CHOSEN <<	6	11.5	82.7
802. In-depth study	5	9.6	92.3
801. Independent study class	3	5.8	98.1
804. Mentorship	1	1.9	100.0
Total	52	100.0	

Table 42. Independent Studies and Mentors Programming Type: First Choice, Middle School.

	Frequency	Percent	Cumulative Percent
803. Individual projects	34	65.4	65.4
802. In-depth study	6	11.5	76.9
801. Independent study class	5	9.6	86.5
>> NOTHING CHOSEN <<	4	7.7	94.2
804. Mentorship	3	5.8	100.0
Total	52	100.0	

Table 43. Independent Studies and Mentors Programming Type: First Choice, High School.

	Frequency	Percent	Cumulative Percent
803. Individual projects	16	30.8	30.8
801. Independent study class	14	26.9	57.7
802. In-depth study	10	19.2	76.9
804. Mentorship	6	11.5	88.5
>> NOTHING CHOSEN <<	4	7.7	96.2
806. Apprenticeship	1	1.9	98.1
805. Internship	1	1.9	100.0
Total	52	100.0	

Table 44. Independent Studies and Mentors Accountability Method: First Choice, Elementary School.

	Frequency	Percent	Cumulative Percent
AuthPerf: Rubrics	18	34.6	39.1
AuthPerf: Exhibitions	9	17.3	58.7
AuthPerf: Portfolio	4	7.7	67.4
AuthPerf: Independent Study	4	7.7	76.1
Testing: Teacher Designed	3	5.8	82.6
AuthPerf: Juried Presentations	2	3.8	87.0
AuthPerf: Awards/Honors	1	1.9	89.1
Testing-Mastery-Learning	1	1.9	91.3
SubjAssess: Anecdotal/Docs	1	1.9	93.5
SubjAssess: Mentor/Teach. Conf.	1	1.9	95.7
SubjAssess: Learning Logs/Journals	1	1.9	97.8
InvScalesObs: Checklists	1	1.9	100.0
Total	46	88.5	
System	6	11.5	
Total	52	100.0	

Table 45. Independent Studies and Mentors Accountability Method: First Choice, Middle School.

	Frequency	Percent	Cumulative Percent
AuthPerf: Rubrics	22	42.3	45.8
AuthPerf: Exhibitions	6	11.5	58.3
AuthPerf: Portfolio	4	7.7	66.7
AuthPerf: Independent Study	3	5.8	72.9
AuthPerf: Juried Presentations	2	3.8	77.1
AuthPerf: Admission to Prog.	2	3.8	81.3
Testing-Mastery-Learning	2	3.8	85.4
Testing: Teacher Designed	2	3.8	89.6
SubjAssess: Mentor/Teach. Conf.	2	3.8	93.8
AuthPerf: Awards/Honors	1	1.9	95.8
Testing: Pre/Post	1	1.9	97.9
SubjAssess: Learning Logs/Journals	1	1.9	100.0
Total	48	92.3	
System	4	7.7	
Total	52	100.0	

Table 46. Independent Studies and Mentors Accountability Method: First Choice, High School.

	Frequency	Percent	Cumulative Percent
AuthPerf: Rubrics	15	28.8	31.3
AuthPerf: Exhibitions	6	11.5	43.8
SubjAssess: Mentor/Teach. Conf.	6	11.5	56.3
Testing: Teacher Designed	5	9.6	66.7
AuthPerf: Independent Study	4	7.7	75.0
AuthPerf: Portfolio	3	5.8	81.3
Testing-Mastery-Learning	3	5.8	87.5
AuthPerf: Juried Presentations	1	1.9	89.6
AuthPerf: Awards/Honors	1	1.9	91.7
Testing: Testing Out	1	1.9	93.8
SubjAssess: Anecdotal/Docs	1	1.9	95.8
SubjAssess: Interviews	1	1.9	97.9
SubjAssess: Staffing/Child Study Conf.	1	1.9	100.0
Total	48	92.3	
System	4	7.7	
Total	52	100.0	

H. Gifted and Talented Enrichment

Table 47. Gifted and Talented Enrichment Programming Type: First Choice, Elementary School.

	Frequency	Percent	Cumulative Percent
701. Classroom in-depth enrichment	23	44.2	44.2
710. Imported Programs	7	13.5	57.7
703. Field trips and off-campus	6	11.5	69.2
702. Before or after school, Saturday	6	11.5	80.8
709. Competitions	5	9.6	90.4
704. Learning centers	3	5.8	96.2
705. Summer school programs	1	1.9	98.1
>> NOTHING CHOSEN <<	1	1.9	100.0
Total	52	100.0	

Table 48. Gifted and Talented Enrichment Programming Type: First Choice, Middle School.

	Frequency	Percent	Cumulative Percent
701. Classroom in-depth enrichment	19	36.5	36.5
703. Field trips and off-campus	8	15.4	51.9
710. Imported Programs	8	15.4	67.3
707. Extra-curricular programs	7	13.5	80.8
709. Competitions	6	11.5	92.3
>> NOTHING CHOSEN <<	2	3.8	96.2
702. Before or after school, Saturday	2	3.8	100.0
Total	52	100.0	

Table 49. Gifted and Talented Enrichment Programming Type: First Choice, High School.

	Frequency	Percent	Cumulative Percent
707. Extra-curricular programs	13	25.0	25.0
706. College sponsored programs	10	19.2	44.2
701. Classroom in-depth enrichment	10	19.2	63.5
710. Imported Programs	6	11.5	75.0
>> NOTHING CHOSEN <<	4	7.7	82.7
703. Field trips and off-campus	4	7.7	90.4
709. Competitions	3	5.8	96.2
705. Summer school programs	1	1.9	98.1
702. Before or after school, Saturday	1	1.9	100.0
Total	52	100.0	

Table 50. Gifted and Talented Enrichment Accountability Method: First Choice, Elementary School.

	Frequency	Percent	Cumulative Percent
AuthPerf: Rubrics	8	15.4	15.7
AuthPerf: Exhibitions	7	13.5	29.4
SubjAssess: Anecdotal/Docs	7	13.5	43.1
Auth Perf: Competition Results	6	11.5	54.9
AuthPerf: Portfolio	3	5.8	60.8
SubjAssess: Mentor/Teach. Conf.	3	5.8	66.7
RefEval: Self Evaluation	3	5.8	72.5
AuthPerf: Awards/Honors	2	3.8	76.5
Testing: Norm-Referenced	2	3.8	80.4
InvScalesObs: Rating Scales	2	3.8	84.3
AuthPerf: Independent Study	1	1.9	86.3
Testing-Mastery-Learning	1	1.9	88.2
Testing: Teacher Designed	1	1.9	90.2
SubjAssess: Parent Conf.	1	1.9	92.2
SubjAssess: Teach./Student Narratives	1	1.9	94.1
InvScalesObs: Questionnaires	1	1.9	96.1
InvScalesObs: Surveys/Appraisals	1	1.9	98.0
RefEval: Parent Evaluation	1	1.9	100.0
Total	51	98.1	
MISSING	1	1.9	
Total	52	100.0	

Table 51. Gifted and Talented Enrichment Accountability Method: First Choice, Middle School.

	Frequency	Percent	Cumulative Percent
AuthPerf: Rubrics	9	17.3	18.0
Auth Perf: Competition Results	8	15.4	34.0
AuthPerf: Exhibitions	6	11.5	46.0
AuthPerf: Awards/Honors	5	9.6	56.0
InvScalesObs: Surveys/Appraisals	4	7.7	64.0
SubjAssess: Anecdotal/Docs	3	5.8	70.0
AuthPerf: Portfolio	2	3.8	74.0
Testing: Teacher Designed	2	3.8	78.0
SubjAssess: Parent Conf.	2	3.8	82.0
SubjAssess: Teach./Student Narratives	2	3.8	86.0
AuthPerf: Juried Presentations	1	1.9	88.0
AuthPerf: Admission to Prog.	1	1.9	90.0
Testing-Mastery-Learning	1	1.9	92.0
Testing: Pre/Post	1	1.9	94.0
SubjAssess: Interviews	1	1.9	96.0
SubjAssess: Learning Logs/Journals	1	1.9	98.0
InvScalesObs: Questionnaires	1	1.9	100.0
Total	50	96.2	
MISSING	2	3.8	
Total	52	100.0	

Table 52. Gifted and Talented Enrichment Accountability Method: First Choice, High School.

	Frequency	Percent	Cumulative Percent
AuthPerf: Exhibitions	6	11.5	12.5
InvScalesObs: Surveys/Appraisals	6	11.5	25.0
AuthPerf: Rubrics	5	9.6	35.4
AuthPerf: Awards/Honors	5	9.6	45.8
Testing: Teacher Designed	4	7.7	54.2
Auth Perf: Competition Results	3	5.8	60.4
AuthPerf: Admission to Prog.	3	5.8	66.7
AuthPerf: Juried Presentations	2	3.8	70.8
SubjAssess: Anecdotal/Docs	2	3.8	75.0
SubjAssess: Parent Conf.	2	3.8	79.2
SubjAssess: Teach./Student Narratives	2	3.8	83.3
AuthPerf: Portfolio	1	1.9	85.4
AuthPerf: Diploma/Cert.	1	1.9	87.5
Testing-Mastery-Learning	1	1.9	89.6
Testing: Criterion Referenced	1	1.9	91.7
SubjAssess: Mentor/Teach. Conf.	1	1.9	93.8
SubjAssess: Interviews	1	1.9	95.8
InvScalesObs: Rating Scales	1	1.9	97.9
RefEval: Self Evaluation	1	1.9	100.0
Total	48	92.3	
MISSING	4	7.7	
Total	52	100.0	