

Colorado

Department of Corrections

Youthful Offender System Annual Report



Brian D. Burnett
Acting Executive Director

January 30, 2002

This Button is found throughout this document and can be used to return to the Table of Contents

Table of contents

SECTION		PAGE
1	OVERVIEW	1
	Sentencing Procedures	1
	Legislative Changes Affecting Y.O.S. Sentencing Provisions	4
2	PROGRAM STRUCTURE	6
	Intake Diagnostic and Orientation Phase (IDO)	7
	IDO Program Measures	10
	Phase I Program Description	11
	Phase I Program Measures	16
	Phase II Program Description	18
	Phase II - Pueblo	19
	Phase II Program Measures	24
	Phase III Program Description	27
	Phase III Program Measures	40
3	FUTURE PROGRAM CONSIDERATIONS	42
4	Y.O.S. PROGRAM EXPENDITURES AND COSTS	44
5	OFFENDER PROFILES	46
	Admissions Trends	46
	Y.O.S. Total Releases	52
	Population Characteristics by Program	55
	Participation In Program Phases	59
6	RECIDIVISM AND REOFFENSE	60
7	PROGRAM INTERVENTIONS	63
8	DAILY SCHEDULE	67
9	REOFFENSE RATES	79

SECTION I - OVERVIEW

The Youthful Offender System (Y.O.S.) was established within the Colorado Department of Corrections under legislation enacted in 1993. The 1993 Special Session of the Colorado Legislature was called to deal primarily with youth violence. **Senate bill 93S-9** provided the state of Colorado with a new sentencing option for certain youthful offenders to include: a controlled and regimented environment affirming dignity of self and others, promoting values of work and self-discipline, and developing useful skills and abilities through enriched programming.

Sentencing Procedures

Juveniles may be charged by the District Attorney, who direct files the case in district court, if the juvenile meets specific age and offense criteria. The direct filed juveniles, who are at least fourteen years of age and less than eighteen years at the time of offense, are less than nineteen years of age at time of sentencing, and are convicted of certain offenses, are then eligible to be sentenced to the Youthful Offender System. The court must first impose a sentence to prison, which is then suspended, conditional upon the completion of the sentence to Y.O.S. The Y.O.S. sentence imposed must be at least two years but no more than six years, except in the case of a class two felony, which may be up to seven years in length. The Y.O.S. sentence includes a period of community supervision of no less than six months and no more than twelve months.

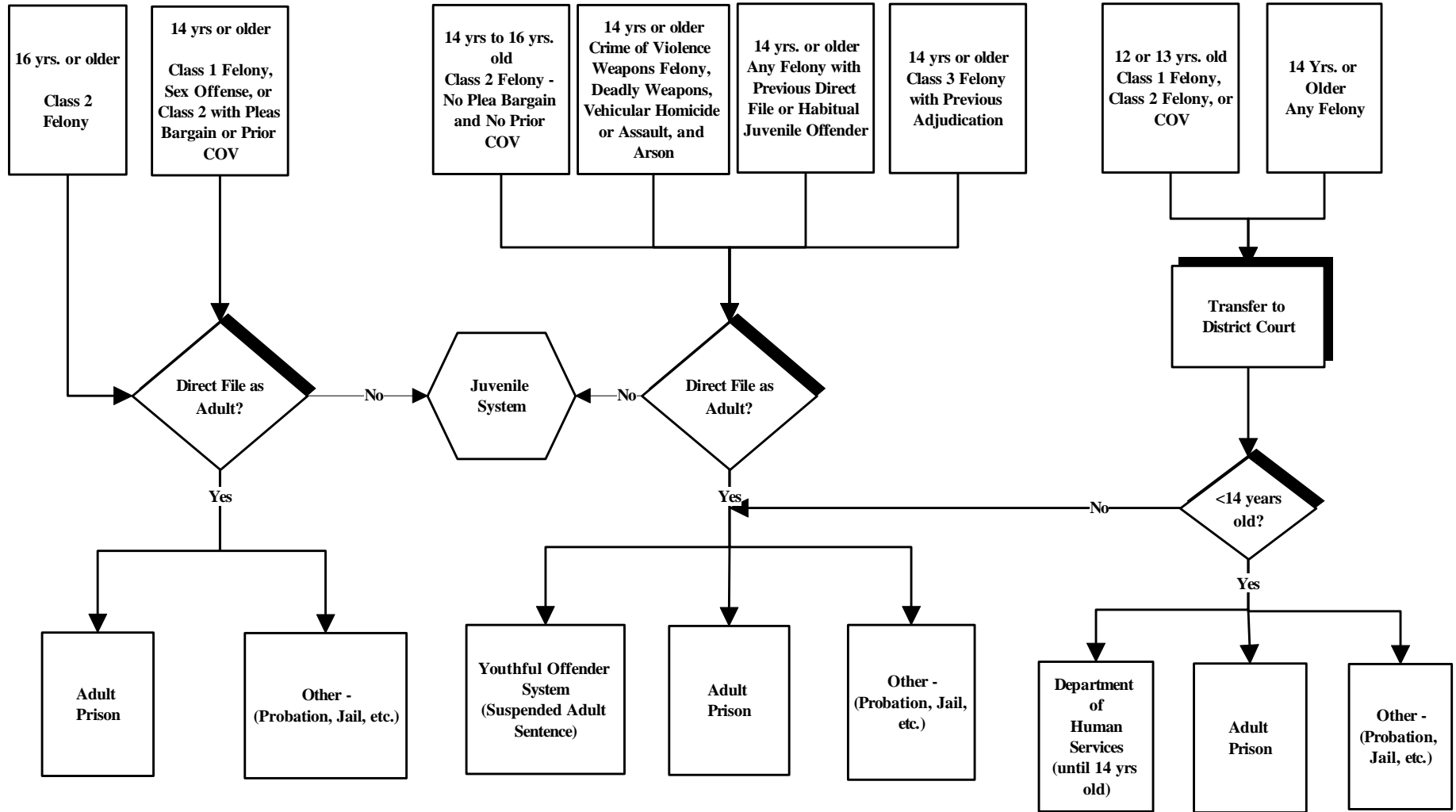
The following offenses are eligible for sentencing to Y.O.S.:

- ⇒ Class two felonies, which are not the result of a plea agreement where a class one felony was charged
- ⇒ Defined crimes of violence in C.R.S. 16-11-309, including crimes against an at-risk adult or at-risk juvenile, first or second degree assault, kidnapping, aggravated robbery, first degree arson, first degree burglary, escape, and criminal extortion
- ⇒ Felonies involving the use or possession and threatened use of a deadly weapon
- ⇒ Vehicular homicide, vehicular assault, arson

Criminal attempt, conspiracy, solicitation, or complicity to any of the offenses listed would also be eligible for Y.O.S. sentencing. Juvenile offenders with histories of delinquent acts, which would constitute felonies, and habitual juvenile offenders, as defined in C.R.S. 19-1-103, are specifically identified in the statute as eligible for Y.O.S.

The sentencing options for juveniles who have been direct filed in district court are provided in more detail in the following diagram, including age requirements and offense categories.

SENTENCING OF JUVENILES AS ADULTS



COV = Crime of Violence

Legislative Changes Affecting Y.O.S. Sentencing Provisions

The original legislation establishing the Youthful Offender System was enacted in SB 93S-9, with several legislative revisions passed since 1993 to modify and improve the program. The more significant pieces of legislation are discussed below.

SB 93S-9:

Signed into law on September 23, 1993, the original legislation provided for a determinate sentence to Y.O.S. of at least one year but no more than five years followed by an additional mandatory parole period of twelve months.

SB 94-201:

The sentencing structure was changed to a determinate sentence of at least two years but no more than six years of which six to twelve months of the sentence can be under community supervision. A three-month transition phase, known as phase II, is considered as part of the community supervision. This legislation transferred supervision authority from the Colorado Parole Board to the Division of Community Corrections within the Department of Corrections for phase III. The twelve-month parole period was eliminated.

SB 94-155:

This legislation expands the juveniles eligible for sentencing to Y.O.S. to include habitual juvenile offenders as defined in C.R.S. 19-1-103.

HB 96-1128:

The phase II three-month prerelease supervision, which previously applied to the community supervision portion of the sentence, was changed to apply to the period of incarceration under this legislation signed June 1, 1996.

SB 99-130:

This legislation eliminated the provision that previously precluded class two felony convictions from being sentenced to Y.O.S. Juveniles less than 16 years of age, convicted of a class two felony which is not the result of a plea agreement charged as a class one felony, and have not had one or more convictions or adjudications for a crime of violence are eligible for sentencing to Y.O.S. under this legislation. The sentence to Y.O.S. for a class two felony may be up to seven years.

SB 99-131:

The original legislation, SB93S-9, established a sunset provision for the Youthful Offender System of June 30, 1999. This legislation extended the repeal date for five years to June 30, 2004.

SB 00-140:

Minor changes to the Youthful Offender System were provided through this legislation. A presentence investigation must be conducted before sentencing a juvenile to the Youthful Offender System. Funding for sex offender treatment services is provided through this legislation to treat any youthful offenders who have a history of committing any sexual offense or any other offense with an underlying factual basis of a sexual offense. Offenders may be transferred to another facility for up to sixty days for diagnostic validation of mental illness or developmental disabilities. This legislation specifies that the district court shall review the offender's sentence within 120 days after notification when the Department has determined the offender is not able to complete the Y.O.S. program.

SB 01-015:

New provisions require the Department to notify local law enforcement in the jurisdiction where an offender will be placed for phase III. A process is implemented for local law enforcement to appeal the placement, with the executive director as the final authority.

SECTION II - Program Structure

The Youthful Offender System consists of four phases, designed to provide a continuum of core programs and specialized services tailored to individual needs. The four phases, as defined in statute, are as follows:

- 1.** An intake, diagnostic, and orientation program (IDO);
- 2.** Phase I, during which time a range of core programs, supplementary activities, and educational and vocational programs are provided to youthful offenders;
- 3.** Phase II, which may be administered during the last three months of the period of institutional confinement and during which time the youthful offender is supervised in a twenty-four hour custody residential program that prepares the youth for community reintegration;
- 4.** Phase III, which is to be administered for the period of community supervision that remains after the completion of phase II and during which time the youthful offender is monitored as the offender reintegrates into society.

~ **Intake, Diagnostic, and Orientation Phase (IDO)** ~

An initial assessment is completed when the offender is received and processed at the facility. This assessment consists of the following content areas:

- Gang involvement
- History of drug use and dependency
- Attitude toward authority
- History of crime related to drug use
- History of drug treatment
- Mental health
- Physical health
- Recent violent or aggressive behavior
- Sexual offender history
- Educational aptitude and achievement level
- Work history and aptitude
- Social and family history
- Behavioral problems
- Cognitive skills
- Community assessments, referrals, and recommendations

Diagnostic Procedures

Standardized assessment instruments are administered by trained staff to identify and evaluate offender deficiencies and needs in the areas listed above. Use of standardized testing is supplemented by a focused interview with the offender to verify or elaborate on information provided. Documentation is obtained from court documents, pre-sentence investigation reports, juvenile records when available, family, and Y.O.S. program teams. Education, treatment, and placement history may be further validated via phone contact or written correspondence.

Intensive Orientation

The initial orientation occurs during the first 30 days and participation is required for all offenders. This activity provides basic information regarding:

- Program rules and regulations
- Group behavioral norms
- Methods of confrontation
- Sanctions
- Responsibilities to attend program activities
- Confidentiality of information including limits to confidentiality
- Criteria for termination from the Y.O.S. program
- Criteria for successful completion of the program
- Explanation of Y.O.S. sentencing

Orientation includes a thorough discussion of the full scope of program activities to occur in all phases of the program. Throughout the first 30 days, when not involved in orientation or diagnostic activities, the offender is involved in highly regimented physical activities similar to a modified military-type induction at boot camp.

Individualized Planning

At the conclusion of the intake process, within three weeks of the Y.O.S. intake day, an IDO program team meets to develop a coordinated plan of program activities. The program team includes the following staff:

- Primary counselor
- Individual counselor
- Educational specialist
- Treatment team coordinator
- Staff psychologist and/or consulting psychiatrist
- Addictions specialist - certified addiction counselor(s)
- Youth counselors I and II
- Correctional officers/drill instructors
- Other multi-disciplinary team members

The program team develops an individualized program plan, monitors the youthful offender's progress during each phase of the program, and reviews all

critical incidents or requests for termination that may arise during the course of involvement in the IDO program.

A multi-disciplined individualized program team staffing is held on the 28th day for each IDO boot camp offender. This staffing reviews behavior problems, cognitive skills, drug and alcohol issues, custody concerns, educational development and placement, family support, and security threat group (gang) issues. At this staffing, the offender is also introduced to his or her phase I youth counselor. The phase I youth counselor will begin to acquaint the offender with the program expectations of phase I.

~ IDO Program Measures ~

FISCAL YEAR 2000-2001					
Measure	Quarter 1	Quarter 2	Quarter 3	Quarter 4	FY01 Total
• No. of Offenders Processed and Assessed through Intake	21	27	11	20	79
• No. of Individual Program Plans Developed	21	18	10	20	69
• No. of Offenders Graduated to Phase I	24	26	14	20	84
• No. of Admission Reports Provided to Courts	21	18	11	20	70

Individual program plans and admission reports were not completed for offenders who were revoked early in the process or transferred to other facilities for evaluation and treatment.

~ PHASE I PROGRAM DESCRIPTION ~

The IDO graduate progresses to the first phase of three, which utilizes a unit management approach to the programming and management of youthful offenders in units of no more than fifteen offenders per group.

The offender, a family member, and the program team are included in developing the Individualized Program Plan (IPP) whenever possible. The program plan describes measurable goals and specific program interventions recommended to meet each goal. Measurable behavioral criteria for successful completion of the respective phases of the program are individualized in the plan. Criteria must address the minimum requirements for attendance and participation in program activities, achievement of satisfactory monthly progress ratings by the program counselor, and other behaviors that are determined by the program team to be critical to the offender's elimination of gang identification and violence potential. The program plan also describes anticipated dates of program modules to be provided, staff responsible for monitoring program activities, and dates of anticipated program plan review.

Quarterly Progress Ratings

Quarterly progress ratings are provided by the primary program counselor for each critical problem area identified within the program plan, and are reviewed regularly by the team. A separate program plan is developed for each phase of the program, and phase II progress is assessed monthly, rather than quarterly, due to the short duration of the phase. All program records, including assessment result, progress notes, and the program plan, follow the offender through the remaining phases of the program. Each youthful offender must attain the minimum required goals prescribed by the program plan prior to graduating to the next phase.

Failure to progress in Y.O.S. may result in program regression or a revocation recommendation when the failure to progress becomes chronic. Program module effectiveness is monitored by quality assurance staff on a quarterly basis to maximize program efficacy by suggesting mid-course program changes based on empirically documented results.

Unitized Team Approach

Living units are staffed with multi-disciplinary teams with security, discipline, education, treatment, and behavior modification being the shared responsibility of each staff member. Each phased unit serves as a small

community where rewards and incentives are utilized to suppress gang behavior, and pro-social behavior and thinking are reinforced. Program team staff members share in the skill training and education responsibilities. Staff have been selected for their potential to mentor, coach, and provide training to offenders and jointly facilitate the counseling sessions.

Incentive System

Effective juvenile programs typically provide a carefully fashioned incentive system that provides clear rewards for desired behavior. The Y.O.S. incentive system provides a variety of rewards and privileges such as canteen, cosmetic products (for female offenders), visiting privileges, personal telephone calls, television, leisure time activities, extended bed hours, and personal athletic shoes. All privileges are earned in Y.O.S. and can be lost by rule infractions. These incentives increase by levels within any one phase. These privileges are closely tied to behavior and goal attainment of the individual program plan goals set by the program team for each offender.

Education

The mission of the Y.O.S. education program is to develop compassionate, responsible, independent, and productive citizens through quality education. The education program is a comprehensive program that includes academic, vocational, and cognitive classes. These classes are supported by Special Education and Title I services. In addition, a Letter of Agreement between Y.O.S./Century High School and Pueblo School District 60 is in effect. This local school district awards diplomas to offenders meeting District 60 graduation requirements.

Every Y.O.S. offender who has not achieved a G.E.D. or earned a high school diploma prior to arrival at Y.O.S. must be enrolled in either pre-secondary or secondary education programs. Placement in these programs is dependent upon grade and skill levels as determined by the diagnostic process in IDO. Pre-secondary students have a grade placement of first to ninth grade and attend school in the living unit classrooms. Secondary students have a grade placement of tenth to twelfth grade and attend school in the high school building. Students with a high school diploma or G.E.D. attend post-secondary vocational classes or attend college classes leading to an Associate of Arts degree.

The teacher-to-student ratio is maintained at or below one-to-twelve. Small classes and a variety of individual and small group activities provide the

individualized attention and instruction needed to actively involve at-risk youth in a challenging learning process. All Y.O.S. academic and vocational teachers are licensed or credentialed by the Colorado Department of Education.

The academic and vocational courses include:

- Language Arts and English
- Mathematics
- Social Studies
- Science
- Physical Education and Health
- Basic Computer Skills
- Computer Information Systems
- Multimedia Production
- Electronics
- Barbering
- Automotive and Small Engine Repair
- Building Trades

Special Education

The Y.O.S. special education program provides unique instructional assistance for identified youthful offenders as a continuance of the special education programs received in the public schools. A certified special education teacher in the Y.O.S. receiving unit completes an assessment, with follow up provided by two licensed special education teachers who assist regular classroom teachers in the learning process. Federal and state guidelines require the development and follow-up of an individual education plan for each identified offender based on input from a multi-disciplinary team of facility professionals and parents.

Sex Offender Treatment and Monitoring Program

Y.O.S. implemented a sex offender treatment and monitoring program in fiscal year 2001. This program identifies offenders who have a history of committing any sex offense or any other offense with an underlying factual basis that includes a sex offense. The sex offender program further provides treatment that is appropriate for the offender's

age and maturity level. The goal of the Y.O.S. sex offender treatment and monitoring program is to provide a viable sex offender treatment program, which meets standards established by the Colorado Sex Offender Management Board. Five residents are currently enrolled in stage one of the program, with stage two scheduled to begin in January 2002. The next stage one group will also begin in January 2002.

Visiting Program

The visiting program within the facility is designed to ensure that all special considerations, including travel time, relationships, program needs, family issues, and problems, can be met with contact visiting within the Youthful Offender System.

Family Preservation

In May 1999, Y.O.S. conducted its first meeting with offenders' parents. The goal of this meeting was to form parent/staff networking relationships. In order to be less travel intensive, the decision was made to hold meetings on a rotational basis between Denver and Colorado Springs. Parent input and participation have been positive. These meetings have opened up communication lines, resulting in a more productive relationship between parents, staff, and offenders. The communications with parents and staff have continued to improve by establishing a Y.O.S. parent phone tree, and by fully utilizing a volunteer parent committee. Parent groups provide the time and resources needed to host special functions within the Y.O.S. program, creating a professional and harmonious work relationship.

The Y.O.S. management team has provided a clear line of communication on a day-to-day basis by entertaining the concerns, questions, or issues that offender support systems may have.

Remediation and Removal from Population (RFP)

Remediation is a program designed to address noncompliant behavior prior to considering revocation procedures. The offenders who are disruptive and serve as a negative influence are separated from their peers. This program is designed as a progressive discipline for typically short time periods, up to 30 days.

Offenders from community phase III status may be returned to the Y.O.S. facility in Pueblo to complete their sanctions and participate in programs. Offenders continue to receive educational and library services during the

remediation process.

Removal from Population (RFP) is a status for those offenders who must be removed from general population for security reasons or pending revocation.

Staff Training

The Colorado Revised Statutes require the Y.O.S. staff to have experience working with juveniles or to receive the proper training prior to working with these youthful offenders. The Department has established a sixty-three hour training program for new staff to meet this mandate. This training includes courses in:

- Adolescent development theory
- Cognitive restructuring
- Cognitive/behavioral skills development
- Suicide prevention
- Interpersonal relations
- Legal issues

The training requirements for staff include individual and group counseling and the development of individual program plans.

~ Phase I Program Measures ~

EDUCATION					
Measure	Quarter 1	Quarter 2	Quarter 3	Quarter 4	FY01 TOTAL
! No. of Enrollments in Academic Courses	147	147	164	164	622
! No. of enrollments in Vocational Courses	50	50	67	68	235
! No. of Enrollments in College Courses	0	87	79	84	250

- 30 G.E.D. Certificates were awarded out of 38 offenders attempting the G.E.D.
- 20 High School diplomas were awarded in fiscal year 2001.
- 9,267 library books were checked out by offenders in fiscal year 2001.

Special Education

- A total of twelve triennial staffings, and forty-five annual review staffings were completed in fiscal year 2001.
- Twenty-one parents or relatives have been a part of the individual education plans and have attended the staffings at Y.O.S.
- The special education program provided services to seventy-six individual offenders, four of whom earned G.E.D.'s and one who received a high school diploma. There was also one court-ordered release and two offenders staffed out of Special Education because they had surpassed the need for these services.

Volunteer Services

- 207 volunteers provided 201 religious volunteer programs.
- 106 religious services were provided to offenders in fiscal year 2001.
- 1,825 offender attendances were recorded at religious events in FY 2001.

Recreation

- 14 activities involving civilian participation were held within the facility.
- 299 structured recreation programs were offered.

Public Safety and Security

- 3 dangerous contraband items were found during fiscal year 2001.
- No escapes from the facility occurred during fiscal year 2001.
- 14 urinalysis tests were positive in 389 tests administered during fiscal year 2001. These positive tests resulted from offenders returning from court trips or phase III.

Incidents of Violence

FIGHTS	ASSAULTS ON OFFENDERS*	ASSAULTS ON STAFF*	SEXUAL ASSAULTS
4	4	2	0

* Threats against offenders or staff are included.

~ PHASE II PROGRAM DESCRIPTION ~

Phase II is a three-month pre-release program that supports the phase I redirection program and provides the foundation for an effective and well-planned phase III community reintegration. The pre-release phase provides intensive supervision and monitoring to enforce compliance to rules that are intended to control the youthful offender's behavior and maintain strict discipline. A system of incentives and sanctions provides a gradual extension of earned privileges and freedoms designed to prepare the offender for a positive community reintegration. The guiding principles of Y.O.S. in administering phase II are as follows:

- ⇒ Provide intensive supervision and surveillance and improve offender compliance through assessments, incentives, and sanctions to maintain public safety.
- ⇒ Utilize mentors to provide support and encouragement and foster positive social interaction.
- ⇒ Replace thinking errors and values with socially acceptable norms that enable the youthful offender to participate in non-criminal community involvement.

The divisions of adult parole and community corrections had statutory responsibility for the phase II pre-release program until the end of fiscal year 1999-2000. On July 1, 2000, according to state statute, the phase II program was relocated to the Y.O.S. Pueblo facility. Outlined in the following pages are the descriptions, core programs, and services provided through the phase II program after its relocation.

~ Phase II - Pueblo ~

The phase II pre-release facility is currently located on the Y.O.S. campus in Pueblo, Colorado. It continues to operate as a twenty-four hour custody program, and staff are required to maintain direct supervision of offenders at all times while in the facility and escorted in the community. Phase II at Y.O.S. continues to provide programs and services designed to facilitate successful community reintegration. Although modified as a result of the new location, the existence of the basic core programs of phase II remains unchanged. These include education, independent living skills, employment services, community service, and transition services.

Education

The education program in phase II was designed to build upon the academic skills the youthful offender acquired in phase I, in order to prepare for the academic, vocational, or occupational challenges of community living. An individualized education plan is developed for each offender, based on available education records from previous placements and achievement tests administered during phase II.

Academic classes continue to be offered in mathematics, grammar and composition, literature, science, college preparation, U.S. history, and geography. These classes may be used to earn high school credits, help prepare for the ACT, SAT, or G.E.D., or to enhance skills for college assessment tests. Courses in writing skills focus on resumes, cover letters, and felony explanations for prospective employers. Additionally, computer education is expanded to include basic Internet programming language (HTML), along with supplementary Internet programs (JAVA). All offenders are required to review and practice basic computer functions, but do not have live Internet access.

The phase II educational curriculum is based on Curtis & Associates' *Bridges to Freedom*. The Bridges to Freedom course consists of the following modules of instruction:

- Goal setting
- Time management
- Communication
- Stress and health
- Interviewing skills

- Responsiveness
- First impressions
- Show time
- Celebrating success
- Decision making
- Money and credit
- Assertiveness
- Exploring interests
- Packaging our product
- Strengths
- Job progression
- Employee panel

Phase II offenders also read Steven Covey's *Seven Habits of Highly Effective People*. This class focuses on improving offenders' effectiveness in essential life roles, such as employee, parent, family member, and member of society.

Phase II youthful offenders may apply for financial aid through the Educational Opportunity Center (EOC) to continue their education. EOC provides information and applications for federal and state grants, scholarships, support services, and assistance with class registration. Any offenders who have not earned a G.E.D. while in phase II may continue to study and test while in phase III. Male offenders who are eighteen years of age or older are required to enroll with Selective Service to qualify for state and federal grants and vouchers.

Independent Living Skills

Offenders prepare for community living by actively participating in independent living skills. To help facilitate a successful community reintegration, offenders meet with community agencies to plan for future transition. They are also responsible for facility chores and maintenance, and are required to attend a nutrition program, through which they are taught skills in food planning and preparation, as well as budgeting and safety.

Employment

All phase II offenders participate in a monthly employment program that assists in career planning by providing labor market information and assistance with applications and resumes. The program helps youthful offenders improve upon skills, such as goal setting, self-esteem, listening, assertiveness, interviewing skills, and job seeking skills. Phase II staff assist offenders in securing important documents such as birth certificates, social security cards, and Colorado identification cards.

Treatment Groups

Phase II offenders participate in groups that address anger management, interpersonal relations, and community expectations. Individual counseling is available for those offenders with special needs or concerns.

Phase II offenders are also involved in drug and alcohol education, which focuses on the role of drugs and alcohol in peer development, as well as in relation to criminal behavior. Youthful offenders are taught to recognize the harmful effects of drugs and alcohol, and understand the varying degrees of abuse and dependence. In addition, offenders are involved in a relapse prevention program designed to help them achieve more long-term recovery from addiction. Upon completion of the relapse prevention program, offenders will be able to:

- ⇒ Understand the cognitive-behavioral aspects of addiction and recovery;
- ⇒ Define personal attitudes, beliefs, and thinking patterns as they pertain to recovery;
- ⇒ Understand how distorted thinking, irrational beliefs, and self-defeating beliefs can impede recovery;
- ⇒ Begin to incorporate pro-social values and beliefs and practice responsible behaviors while incarcerated;
- ⇒ Formulate a plan of action for continued recovery.

Community Service

Youthful offenders are required to participate in 100 hours of meaningful community service, beginning in phase II and continuing through phase III. Offenders in phase II at Pueblo have been involved in the following projects:

- Care and Share Food Bank

- Goodwill Industries
- Historic Riverwalk Project (HARP)
- Lake Pueblo
- Pueblo Humane Society/Animal Midway Neighborhood Association
- Pueblo Levee Project
- Pueblo Raptor Center
- Pueblo Zoo/City Park

Social and Recreational Activities

Social and recreational activities provide an incentive for positive behaviors and increase offenders' awareness of socially acceptable activities that are available to them in the community. Phase II offenders participate in regularly scheduled activities, which have included movies, recreation centers, roller-skating, ice-skating, and miniature golf. The organized activities are funded through donations or fund raising activities.

Transition Services

Transition team meetings occur during phase II to evaluate, coordinate, and finalize a comprehensive and tailored community supervision and reintegration plan for phase III. Meetings are attended by phase I, II, and III staff, the offender, family members, and appropriate community providers. The plan addressed the following components:

- Family preservation, emancipation, or independent living skills
- Academic and vocational education
- Employment
- Drug and alcohol counseling
- Community service
- Mentoring
- Recreational activities
- Cultural groups for pro-social behavior
- Tattoo removal

The offender actively participates in implementation of the phase III plan

after its development. Phase II offenders are transported to meet with and tour phase III community providers, enroll in school, apply for financial aid, drop off employment applications, and schedule interviews. In an effort to assist those offenders transitioning back to their homes, phase II and III staff hold transition meetings at the homes of the youthful offenders when possible. These meetings involve the regular transition team members and the offender's family.

Baby Think It Over Program

All phase III youthful offenders participate in the Baby Think It Over Program, which requires each offender to adopt the role of a parent. By exploring the emotional, financial, and social consequences of parenting, the program introduces offenders to the responsibilities of caring for an infant. The second phase of the program discusses abstinence and sexually transmitted diseases.

CSU Extension Office – Nutrition and Health Program

Colorado State University Cooperative Extension provides nutrition education classes that specifically target those who are eligible for income-based assistance programs. The Extension Nutrition Programs teach a series of classes that show participants how to choose nutritious foods, stretch their food dollars, and handle food safely.

~ Phase II Program Measures ~

- ⇒ 76 offenders entered the phase II program in fiscal year 00-01.
- ⇒ 67 offenders completed phase II and progressed to phase III.

**PHASE II
COMMUNITY SERVICE
FY 00-01**

Community Service Recipients	Number of Events	Service Hours Provided	Number of Offenders
Animal Welfare Protection Society	4	14	38
Baxter Day Care Center	1	5	10
Bethel United Methodist Church – Painting	8	32	72
Boys & Girls Club of Pueblo	9	43	80
Care & Share Food Bank of Pueblo	1	5	5
Colorado State Fair Grounds	15	58	122
Cross D Bar Recreation Foundation Disabled Fishing Clinic	3	15	15
Goodwill Industries	8	28	75
Historic Arkansas River Walk Project	10	34	95
Midway Neighborhood Association	1	3	10
Operation Paint Brush	5	27	60
Presentation to Concerned Parents of Pueblo Workshop	1	2	18
Presentation to Florence High School	1	3	3
Pueblo Animal Shelter	19	62	123
Pueblo Levee Project –Graffiti Removal	2	8	20
Pueblo Nature Center and Trail	25	68	221
Pueblo Parks and Recreation	15	31	132
Pueblo Raptor Center	5	17	43
Pueblo Reservoir State Park	1	5	10
Pueblo Zoo	1	5	10
USC Athletic Department & Grounds	6	15	60
YMCA Bike Race	1	3	10
YMCA Corporate Cup Marathon	1	7	10
YMCA River Trail Run	2	7	12
TOTALS	145	496	1.254

**PHASE II
RECREATIONAL & COMMUNITY REINTEGRATION ACTIVITIES
FY 00-01**

Activity	Number of Events	Number of Offenders
Area Park Trips	17	165
Belmont Fitness Center	85	680
Bowling	7	30
Church Services	27	137
College Baseball Games	4	40
College Basketball Games	3	26
College Wrestling Matches	2	20
Colorado State Fair Trip	2	18
Fourth of July Fireworks at USC	1	18
High School Basketball Games	4	40
High School Football Games	8	78
Historic Arkansas River Walk	1	8
Meal Trips	4	19
Pueblo Ice Arena – Ice Skating	1	10
Pueblo Mall	2	16
Pueblo Zoo	1	10
Tinsel Town Movies	17	68
USC 3 on 3 Basketball Tournament	2	16
YMCA Fitness Center	62	372
TOTALS	250	1,771

**PHASE II
PROSOCIAL/COMMUNITY OPPORTUNITIES
FY 00-01**

Opportunities	Number of Events	Number of Offenders
Community Job Search	4	5
CSU Admittance Interview	1	1
Life Skills – Meal Planning	12	180
Metro State College Registration	1	2
Obtain State Identification Cards	12	67
Pueblo Community College Tour	3	20
Pueblo Library	28	262
TOTALS	61	537

~ Phase III Program Description ~ Community Supervision and Reintegration

The divisions of adult parole and community corrections have designed and implemented the community supervision and reintegration phase that is both intensive and responsive, while holding the youthful offender to the highest level of accountability possible. The community supervision and reintegration phase is committed to teaching the offender self-discipline by confronting noncompliant behavior immediately and employing appropriate sanctions. Sanctions include a broad range of remediation alternatives, including custody. Violent behavior is not tolerated and will result in immediate arrest and detention by the phase III community parole officer. The phase III community parole officer continuously evaluates the youthful offender's program performance and recommends modifications as appropriate. Intensive supervision, an element of phase III, includes a minimum of two contacts per week between each youthful offender and his or her community parole officer, and other collateral contacts to monitor behavior. The frequent and meaningful contacts provide bonding between the officer and the offender, with the officer serving as a positive role model, promoting development of socially acceptable behaviors and attitudes.

The community supervision and reintegration phase features a "highly structured surveillance and monitoring" component with gradual extension of earned privileges and freedoms, designed to prepare the offender for community reintegration and post-release. Curfew compliance, monitoring, and surveillance are key elements of intensive supervision. Each youthful offender is required to wear an electronic monitoring device while under community supervision. In addition, he or she is required to make daily call-ins to a designated day reporting center and submit to a weekly urinalysis screen, unless the offender is living in a twenty-four hour supervised residential program.

Guiding Principles

The guiding principles of the divisions of adult parole and community corrections in administering the community supervision and reintegration phase are as follows:

- ⇒ Provide intensive supervision and surveillance and improve offender compliance through assessments, incentives, and sanctions to maintain public safety;
- ⇒ Provide meaningful community based support and programs and services that

- meet the individual needs of each youthful offender and assist them in a successful community reintegration;
- ⇒ Incorporate the adult parole and community corrections staff as role models to foster socially acceptable behavior;
 - ⇒ Utilize mentors to provide support and encouragement and to foster positive social interaction;
 - ⇒ Replace gang affiliations and values with socially acceptable norms that enable the youthful offender to participate in non-criminal community involvement;
 - ⇒ Provide a network of services that will continue to support and encourage the youthful offender upon release and living unsupervised in the community.

Community Supervision and Monitoring

Community Parole Officer

Community supervision is provided by community parole officers who are Peace Officer Standards and Training (POST) certified and adhere to supervision standards that are set in State Statute and CDOC Administrative Regulations. The community parole officers fulfill many roles and perform many functions in the supervision of youthful offenders. Officers are responsible for youthful offender supervision in the community, responding to attempted escapes and critical incidents, making arrests, administering disciplinary procedures, and removing offenders from the community as necessary. In addition to these traditional functions, the officers also participate in the development of the community supervision and reintegration plan, as well as serve as mentors and role models to the offenders under their supervision. The phase III community parole officer continuously confirms and evaluates program performance and adjusts all aspects of supervision plans as appropriate with program team input. The frequent and meaningful contacts between the officer and the offender are intended to develop some degree of bonding. Officers serve as positive role models, promoting offenders' development of socially acceptable behaviors and attitudes.

The community parole officer provides close supervision and surveillance in phase III by maintaining contact standards that verify or enhance program performance or provide monitoring support. The frequency of contact with the youthful offender is believed to have some correlation to program performance. That is, the more contacts by the program staff with the youthful offender, the more likely he or she is to be compliant with program rules. Conversely, fewer

contacts will result in less surveillance, monitoring, and counseling, and consequently a higher violation and failure rate. Three levels of supervision are used to monitor the youthful offender in the community, with level one being the highest level of supervision for offenders just entering the community or returning from remediation, and level three being the lowest level of supervision. Levels of supervision are based on the youthful offender's stability, performance, and level of adolescent development. They are designed to focus resources on the offenders needing the most attention and who are at greater risk. These highly structured supervision levels and standards are described and defined in the Colorado Department of Corrections Administrative Regulation 250-6.

The community parole officer is a liaison with local law enforcement and particularly with anti-gang units. Most Y.O.S. offenders are gang affiliated and the ties and values of the gang culture have proven to be very strong and destructive. Gang intervention is on-going and gang activity is confronted immediately and directly. Gang behavior and associations are not tolerated. Coordination with the local law enforcement gang unit is critical in understanding and interdicting the gang culture, its influence, and serves to enhance the safety of the youthful offenders and officers.

Redirecting youthful offenders in the community who are gang affiliated and using strategies of highly structured supervision is time intensive. A community parole officer caseload of no more than ten offenders is essential.

Day Reporting Services

Day reporting services are crucial to determine offender compliance with community supervision plans and ensure public safety. Day reporting services include hook-up of ankle monitors and establishment of curfews, daily scheduled call-ins, random urinalysis, treatment and employment verification, case management, restitution collection, and tracking services. The following table identifies the services provided by each agency and their locations:

PHASE III								
SERVICES PROVIDED BY AGENCY								
AGENCY	LOCATION	FAMILY PRESERVATION	INDEPENDENT LIVING	EMANCIPATION SERVICES	DAY REPORTING	TRACKING / MONITORING		
<i>TURNING POINT</i>	<i>FT. COLLINS</i>	X	X	X				
<i>BI MONITORING</i>	<i>STATEWIDE</i>				X			X
<i>PUEBLO YOUTH SERVICES BUREAU</i>	<i>PUEBLO</i>	X	X	X	X			X
<i>COLORADO WEST MENTAL HEALTH</i>	<i>GRAND JUNCTION</i>	X	X	X	X			X
<i>SAVIO HOUSE</i>	<i>DENVER</i>	X	X					
<i>WORKOUT LTD.</i>	<i>COLORADO SPRINGS</i>	X	X					
<i>COLORADO WEST MENTAL HEALTH</i>	<i>GLENWOOD SPRINGS</i>	X			X			
<i>YOUTHTRACK PAL PROGRAM</i>	<i>CO. SPRINGS, AURORA</i>			X				
<i>LARIMER CO. COMM. CORRECTIONS</i>	<i>FT. COLLINS</i>				X			X
<i>WILLIAMS STREET CENTER</i>	<i>DENVER</i>				X			X
<i>MESA CO. COMM. CORRECTIONS</i>	<i>FT. COLLINS</i>				X			X
<i>THE VILLA AT GREELEY</i>	<i>GREELEY</i>				X			X
<i>PRO TECH MONITORING: GPS</i>	<i>STATEWIDE</i>							X
<i>ADAMS CO. COMM. CORRECTIONS</i>	<i>DENVER</i>				X			X

Electronic Monitoring

All phase III offenders are on electronic monitoring. The BI Home Escort System is comprised of a field monitoring device (FMD), transmitter, and special ankle bracelet, which the youthful offender wears twenty-four hours a day. The FMD is located in the offender's home and plugs into a telephone line. Each unit is coded and recorded to each offender, allowing individual curfews to be set. Compliance is determined when an offender is within range of 100 feet of the field monitoring device. Notification is provided when the offender fails to be at the place of residence within curfew hours, initiating escape procedures.

Out of home verification is possible by use of the BI Drive-BI portable monitoring device. This device can monitor an offender's presence at work, school, or other authorized activities outside the home. In most cases, this portable hand held device can actually monitor from inside an officer's automobile without the offender being aware of detection.

Paging System

The Williams Street Center's Electronic Paging Program (EPP) uses alphanumeric pagers to monitor the location, movement, and activities of offenders during day and evening hours. Youthful offenders are assigned specific pagers and are paged at random intervals throughout the day and evening for location verification and specific instructions, lawful, and direct orders. Youthful offenders are paged and given a printed message instructing them to call a specific telephone number within ten minutes. The return calls pass through a specialized caller identification unit and a digital logger/voice recorder. The incoming youthful offender number is identified and location is confirmed by EPP staff, who match the information against a list of authorized numbers and locations for each offender. The EPP offers compliance verification with terms of community release such as work, school, or treatment. The EPP compliments curfew monitoring by providing detailed information on youthful offenders throughout the day and evening and immediate communication between community parole officers and offenders. All phase III offenders participate in the paging system.

Sanctions

When phase III standards and regulations are violated, the divisions of adult parole and community corrections act quickly to institute an array of sanctions to address the youthful offender's noncompliant behavior in the community. Sanctions are designed as progressive discipline and may include the writing of

essays describing the situation and offering solutions, additional community service hours, additional restitution, loss of privileges, house arrest, or remediation to the Y.O.S. facility.

Remediation is a responsive procedure to address and correct noncompliant behavior without revoking the youthful offender's Y.O.S. sentence. The emphasis of remediation is on providing immediate interventions and consequences to correct noncompliant behavior. Y.O.S. facility remediation consists of interaction between the phase III officer and IDO staff to identify the infraction and develop a plan of action to address the unacceptable behaviors. During fiscal year 2000-2001, community parole officers participated in 60 remediations of 44 phase III offenders when previous interventions failed to modify behavior and additional measures were required to redirect those behaviors in the community.

In certain instances the youthful offender may be revoked from any phase of the Youthful Offender System for refusal to participate in the program, re-offending, excessive program violations, or any other reason deemed appropriate. In these cases, the director of the divisions of adult parole and community corrections will investigate and make recommendations on all revocation requests that may occur. If recommended, the division director will submit a report outlining circumstances and justifications to the executive director of CDOC for approval. Y.O.S. revocation procedures are explained in the Colorado Department of Corrections Administrative Regulation 250-11.

Command Post

As a matter of public safety and service to the youthful offenders, the divisions of adult parole and community corrections operate a twenty-four hour command post to provide around the clock, 365 day per year emergency communication coverage. The command post provides a unique communication and notification system that links the divisions of adult parole and community corrections and statewide community corrections facilities with law enforcement. The community supervision and reintegration phase is included in this twenty-four hour command post.

Fugitive Apprehension Unit

The divisions of adult parole and community corrections are in partnership with law enforcement in a special statewide fugitive task force. The task force is assigned to investigate and apprehend Department of Corrections and State Judicial fugitives. The community supervision and reintegration phase has been

incorporated into this special unit.

Staff Training and Development

All divisions of adult parole and community corrections Y.O.S. staff are required to attend the Department of Corrections Basic Training Course, maintain a minimum of forty hours of subsequent training each year, and may select subjects and courses to enhance career development specific to their professional status and level. All divisions of adult parole and community corrections Y.O.S. staff members have attended training in the Principles of Adolescent Development, Level of Service Inventory (LSI), and the Quick Skills cognitive education program. Community parole officers are required to be Peace Officer Standards and Training certified, and by state statute, class Ia Peace Officers. Officers are also firearms certified and participate in monthly firearms training to pass an approved quarterly firearms proficiency course.

Community Based Service Programs and Providers

The Y.O.S. is based on the delivery of meaningful programs and as such, phase III incorporates contracted community-based programs to provide a broad and diverse menu of support, intervention, and treatment system options to facilitate the rehabilitation of the youthful offender. Upon entering the community supervision and reintegration phase, the youthful offender participates in a week long program orientation that includes employment, education, and leisure assessments, program services and supervision stands review, community resource orientation, and implementation of community reintegration plan. Phase III community based service providers received National Institute of Corrections (NIC) sponsored training on assessment instruments to help case managers identify the needs of phase III offenders so that appropriate interventions can be designed and implemented in the community.

A full menu of meaningful programs offers better risk control and behavioral reform. As the intensity of the community supervision and reintegration phase decreases, the involvement in the community based support network should increase to offer support and encouragement after completion of the Y.O.S. sentence. To ensure quality of service from the phase III community based service providers, the divisions of adult parole and community corrections periodically conducts program audits. Emancipation program audits were conducted in Grand Junction, Denver, and Fort Collins during fiscal year 2000-2001.

In order for the Y.O.S. offenders to have a better understanding of the community based services available to them in phase III, the divisions of adult parole and community corrections sponsored its third annual Community Reintegration Information Fair on March 15, 2001 at the Y.O.S. Pueblo facility. Representatives from community based service providers statewide set up display tables to explain their programs to Y.O.S. phase I and II offenders and to answer any questions. In addition, phase III community parole officers and representatives from community colleges throughout the state attended to provide information and answer questions.

Community-Based Residential Programs

Family Preservation

Youthful offenders returning to the home of their parent or parents, family, or other designated sponsor are identified as candidates for family preservation. In the family preservation component, parents, family, or sponsors are considered integral in developing and implementing the aftercare plan and are included in establishing a family and community support system for the offender. The concept is to build a team approach with a commitment from the parents, family, or sponsor to cooperate and support the Y.O.S. offender in achieving the goals of community reintegration. Counseling is available for families and the youthful offender in the areas of parenting, conflict resolution, and family therapy to assist with the transition to the home environment.

The phase III community parole officer conducts a home visit three months prior to the offender's release to community supervision and assesses the appropriateness of the youthful offender's return to the home, based on the degree of support, the environmental conditions, and other factors relevant to the likelihood of success of community reintegration.

Emancipation Programs

Youthful offenders living apart from parents, family, or sponsor and programmed for independent living are identified as candidates for an emancipation program. Emancipation is the most critical program of the community supervision and reintegration plan. Returning home is not conducive to the program goals for many youthful offenders. Some Y.O.S. offenders who initially return home must be placed in an emancipation program when the initial attempt at family preservation fails and it is recognized that the environment is not favorable to successful reintegration. A dysfunctional family, gang influence, or

other recognizable needs to remove the offender from the family environment may dictate the need to emancipate the youthful offender.

Short term (three to six months) placement in a contracted supervised group home or apartment emancipation program provides the offender with cognitive intervention, independent living skills, gang intervention, community sponsored social and recreational activities, and transitional services essential for the gradual transition to independent living. A supervised group home or apartment environment is useful in teaching and instilling responsibility and coping skills with peers and offers a period to determine the readiness of the youthful offender for independent living. Fundamentals for independent living such as money management, rental housing issues, housekeeping, food management, transportation, personal hygiene, health, and social issues are learned skills experienced through group home or apartment living.

Independent Living

An offender programmed for independent living is subsidized initially by the divisions of adult parole and community corrections. Y.O.S. offenders typically have little or no income, little savings, and no family financial assistance to support independent living. Community supervision and reintegration identifies and assists the youthful offender in securing appropriate living quarters, and provides assistance in acquiring basic furnishings and other sundry items necessary for independent living. Supervision and monitoring of the offender in independent living is appropriately intensified to ensure program compliance. Independent living may occur upon release from the Y.O.S. phase II facility, but in most cases occurs after a period of emancipation programming, which provides a transition period from institution to community.

Services in Community-Based Programs

Education

One of the primary goals of Y.O.S. is for each youthful offender to attain a G.E.D. or high school diploma. Each Y.O.S. offender is required to attend academic classes until the high school education or equivalence is achieved. Phase III offenders may pursue a G.E.D. or High School diploma through Workforce Investment Act (WIA) funds distributed through the Department of Labor and Employment and administered by various workforce centers throughout the state. Educational funding is also provided by Attitude, Skills, and Knowledge (ASK) Grants, distributed through the Department of Corrections and

administered by the Community College of Denver. Secondary educational opportunities are available through Denver Public Schools, the Educational Opportunity Center, and Emily Griffith Opportunity School.

Community Supervision and Reintegration identifies and offers pre-registration assistance for local education programs at the pre-G.E.D., secondary, and post-secondary level. Post secondary education for the youthful offender is based on the desire, motivation, and opportunity of the youthful offender. Education beyond the secondary level must be financed by sources outside the Y.O.S. system. Those offenders who wish to continue their education by attending college or vocational school may do so through Pell Grants. Phase III offenders have attended the Community College of Aurora, the Community College of Denver, Front Range Community College, Metro State College, Pikes Peak Community College, Pueblo Community College, and Red Rocks Community College.

The divisions of adult parole and community corrections have identified a cognitive education program, Quick Skills, which is being used statewide in phase III. This cognitive-behavioral structured skill development program consists of twelve modular skill-building courses. The courses have been designed to help offenders improve skill deficits in the areas of problem solving, thinking traps, aggression replacement, anger control, parenting skills, dealing with feelings, self assertion, dealing with difficult situations, employment skills, financial management, basic learning skills, and basic social skills. In the Denver Metro Area the Quick Skills cognitive education classes are facilitated at the Community College of Denver and offenders receive college credits for complete modules. The divisions of adult parole and community corrections were able to access funding for basic training and trainer certification training statewide. Those participating in basic training included community parole officers and mental health therapists. Those participating in trainer certified training included community based program case managers and Y.O.S. phase II facility staff.

The divisions of adult parole and community corrections were able to negotiate special pricing for the phase III community-based service providers to purchase the PLATO Learning Program. PLATO is a computer-based instructional system designed to enhance the learning process and help adolescent and adult students. PLATO provides interactive, individualized instruction in math, reading, writing, science, social studies, life skills, and work skills. The program offers more than 2,000 hours and 10,000 objectives on comprehensive academic and applied skills courseware. In addition, the program aligns with the Colorado Student Assessment Program (CSAP) for high school math, reading, and

G.E.D. preparation. The G.E.D. preparation will be most beneficial to those Y.O.S. offenders who will be taking the American Council on Education's new G.E.D. exam, which begins January 1, 2002. The PLATO program is available for youthful offenders in Fort Collins, Denver Metro, Colorado Springs, and Pueblo.

Employment

Each youthful offender is required to secure and maintain at least part-time employment during community supervision. The requirement to maintain employment develops a work ethic, builds self-confidence and esteem, and allows the youthful offender to be independent and self-sufficient. All youthful offenders in phase III receive support services from their local Colorado Workforce Center. In addition, community based providers offer employment and career assistance beginning with employment assessments such as Holland's Self-Directed Search (SDS), which matches an individual's characteristics with occupational characteristics, measures consistency and differentiation of personality types, and assesses congruence of individual and occupational characteristics. The intent of assessment is to help the phase III offender identify the important factors he or she should consider in making employment and career decisions, resulting in improved offender job retention. Job retention is identified by the National Institute of Corrections as a primary factor in reducing recidivism. Youthful offenders being emancipated are encouraged to accept full-time employment, while offenders enrolled at community colleges that have financial support are employed part-time, up to twenty hours per week.

The divisions of adult parole and community corrections, collaborating with the Arapahoe/Douglas Workforce Center, were able to access Workforce Investment Act (WIA) discretionary funds for youthful offender services. These services include career counseling, employment assessment and placement, G.E.D. assistance, job skills training, and a case manager who specifically works with Y.O.S. phase III offenders.

Treatment

The divisions of adult parole and community corrections utilize treatment providers authorized by the Department of Corrections Approved Treatment Provider (ATP) program. Community supervision and reintegration emphasizes the need for an offender to participate in appropriate individual or group therapy to identify problem areas and to appreciate the value of him- or herself and others. Each youthful offender is evaluated for appropriate referral for mental health

counseling and drug intervention programs.

Social and Recreational Activities

Phase III emancipation and community based service programs involve youthful offenders in a number of specialized activities. Each community based service provider has memberships in local recreation centers such as the YMCA of Colorado Springs, Beck Recreational Center in Aurora, Englewood Recreation Center, and Healthworks Recreation Center in Fort Collins. Social activities include visits to places such as the Denver Zoo, Denver Museum of Natural History, Denver Nuggets Basketball, and Black Arts Festival. Access to these activities is through donations to the community based service providers.

Transitional Services

The divisions of adult parole and community corrections work with a variety of community based agencies to access services to assist the Y.O.S. offender's transition to the community. These services include, but are not limited to, tattoo removal, bus tokens, clothing allowances, tool allowances, and school supplies.

Community Service

Youthful offenders must complete 100 hours of meaningful community service prior to sentence discharge. Community service requires the youthful offender to give something back to the community in which he or she will be residing, while exposing them to higher social values. Phase III offenders participated in the following community service projects in fiscal year 2001:

- Education and Life Training Center
- Food Bank of the Rockies
- Habitat for Humanity
- Keep Denver Beautiful
- Metro Volunteers
- Salvation Army
- Share Colorado

Community Based Provider Training

All phase III contract agencies receive training on the policies and principles of the Y.O.S. program. Individual agency and division training includes:

- Suicide Assessment and Prevention
- Professional Boundaries
- Treatment Planning
- Cultural Diversity
- Addictions Counseling
- Samenow's Errors in Thinking
- Erickson's Social Learning Theory
- Rational Emotive and Reality Therapy
- First Aid
- CPR
- AIDS/HIV Awareness
- OSHA Safety and Compliance
- Interviewing Techniques
- Principles of Adolescent Development
- Quick Skills
- Career Development Theory and the Role of Assessments in Career Planning and Job Placement

~ Phase III Program Measures ~

Data collection for phase III occurs when the offenders complete or terminate the program. Fiscal year 2000-2001 exits from phase III of the program totaled 85 offenders. Of the 85 offenders who released, 73 completed their sentences, five were revoked from the program, five discharged pending revocation, and two were discharged by court order.

PHASE III TERMINATIONS AND DISCHARGES

	Termination Type								TOTAL* N=85	
	Sentence Discharges				Revocation N=5		Court Ordered Discharges N=2			
	Completion N=73		Pending Revocation N=5							
No.	% of Total	No.	% of Total	No.	% of Total	No.	% of Total	No.	% of Total	
~ Obtained G.E.D. or High School Diploma	14	19.2%	2	40.0%	1	20.0%	0	0.0%	17	20.0%
~ Attended Post Secondary Education	15	20.5%	0	0.0%	0	0.0%	1	50.0%	16	18.8%
~ Employed	71	97.3%	2	40.0%	5	100.0%	2	100.0%	80	94.1%
~ Participated in Mental Health Counseling	73	100.0%	5	100.0%	5	100.0%	2	100.0%	85	100.0%
~ Participated in Substance Abuse Treatment	72	98.6%	5	100.0%	5	100.0%	2	100.0%	84	98.8%
~ Participated in Cognitive Group	34	46.6%	5	100.0%	1	20.0%	1	50.0%	41	48.2%
~ Arrested	50	68.5%	5	100.0%	4	80.0%	2	100.0%	61	71.8%
~ Remediated	34	46.6%	4	80.0%	4	80.0%	2	100.0%	44	51.8%
~ Technical Revocation	0	0.0%	2	40.0%	3	60.0%	0	0.0%	5	5.9%
~ Revocation for New Charges	0	0.0%	3	60.0%	2	40.0%	0	0.0%	5	5.9%

* Excludes 11 offenders terminated or discharged from the Pueblo facility.

Restitution

- Y.O.S. offenders exiting phase III during fiscal year 2001 made restitution payments totaling \$58,921.93 an average of \$693.20 per offender. This is an increase of \$20,775.98 over last year.

Community Service

- Y.O.S. offenders exiting phase III during fiscal year 2000-2001 completed 7,515 hours of community service, an average of 88 hours per offender.

Wages

- Y.O.S. offenders exiting phase III during fiscal year 2000-2001 earned \$504,316 in wages, an average of \$6,303.95 per offender.

SECTION III - Future Program Considerations

~ IDO, Phase I, and Phase II ~

- ⇒ Assess the Y.O.S. program in the areas of Positive Peer Culture and Guided Group Interaction with emphasis on the following items:
 - ↳ Review services provided by Alcohol Recovery Program (ARP) for duplication, content, and quality.
 - ↳ Provide additional training to staff to ensure consistent application of Guided Group Interactions and maintenance of Positive Peer Culture.
 - ↳ Provide refresher training to existing offender population to enhance consistency of program skills and ensure continuity of program throughout all phases of the Y.O.S. program.
 - ↳ Develop staff trainers for Guided Group Interaction and other areas related to adolescent skill development to enhance consistency of program delivery.
 - ↳ Develop meaningful program criteria to address negative behaviors with cognitive interventions, i.e. anger control, aggression replacement, problem solving, and thinking traps. These units of instruction will be attached to program team reviews, which determine status and classification actions.
 - ↳ Implement Guided Group Interaction sessions in the phase II component of the program.

~ Phase III ~

- ⇒ The divisions of adult parole and community corrections are designing a Y.O.S. Mentoring Program in collaboration with CDOC volunteer services and a community based service provider to offer mentoring services to offenders in the facility and to follow them out into the community.

- ⇒ The divisions of adult parole and community corrections are working with a Y.O.S. community based service provider to develop and implement a

residential substance abuse program for phase III. This program will also be in partnership with the AA Bridging the Gap Program.

~ Overall Program Considerations ~

- ⇒ The Department continues to work with district attorneys, public defenders, and judges to increase awareness about the Youthful Offender System and ensure consistent, appropriate, and timely sentencing under the Y.O.S. statutory provisions. Tours of the program are routinely scheduled and conducted for attorneys, judges, and advocacy groups. Informational packets have been mailed upon request.
- ⇒ The Division of Criminal Justice within the Department of Public Safety is in the initial stages of an evaluation of the Youthful Offender System. The Division is required to report its findings on or before November 1, 2002 and every two years thereafter.
- ⇒ The Colorado Supreme Court ruling on June 25, 2001 (00SA389 People v. Miller) established clear guidelines regarding offenders in the revocation process. The Court determined that the original suspended DOC sentence is not replaced by the Y.O.S. sentence and this sentence must be imposed for offenders who have not *successfully* completed the Y.O.S. sentence. This ruling will allow the Department and district attorneys to continue the revocation process for offenders nearing the discharge date on the Y.O.S. sentence.

SECTION IV - Y.O.S. Program Expenditures and Costs

The program expenditures for fiscal year 2001 are itemized in the table provided. The phase II program was moved to the Pueblo facility at the end of fiscal year 2000; therefore the expenditures associated with phase II are now combined with the IDO and phase I at the Pueblo facility.

Sixty beds at the Y.O.S. facility in Pueblo are being used temporarily to house 60 adult female offenders. The program expenditures, personnel, and inmate population figures for these female offenders are included in IDO and phase I. Personnel includes 22.0 FTE and inmate population includes 43 ADP designated for the adult female population. Expenditures for this population are not tracked separately.

Two hundred twenty-one staff positions (FTE's) are assigned to the Pueblo facility and 10 positions are assigned to phase III for a total of 231 positions. Phase III utilizes contract services, extensively reducing the personal services expenditures and personnel requirements. The phase II transition to Pueblo was funded with 16.2 additional FTE.

The cost per inmate is determined using the average daily population for each phase of the program. The fiscal year 2001 annual cost per inmate in the Youthful Offender System was \$52,337, an increase of 6.0% from the annual cost in 2000 of \$49,360.

The average daily cost of \$145.47 for the IDO, phase I, and phase II programs at the Pueblo facility is 11.1% higher than the daily cost of \$130.94 for the community-based phase III program. The phase III expenditures decreased 25.9% in fiscal year 2001 from the prior year but the daily cost per inmate still increased 17.9% as a result of the 37.1% decrease in the ADP.

YOUTHFUL OFFENDER SYSTEM
PROGRAM EXPENDITURES AND COST PER INMATE*
FISCAL YEAR 2000-2001

	IDO, PHASE I AND PHASE II			PHASE III			TOTAL Y.O.S. PROGRAM		
PERSONNEL									
Full Time Equivalents (FTE)		221 *			10.0			231.0 *	
INMATE POPULATION									
Average Daily Population (ADP)		263 *			44			307 *	
	Annual Cost	Daily Cost		Annual Cost	Daily Cost		Annual Cost	Daily Cost	
	*Annual	Per Inmate	Per Inmate	Annual	Per Inmate	Per Inmate	Annual	Per Inmate	Per Inmate
EXPENDITURES	Cost	(ADP)	(ADP)	Cost	(ADP)	(ADP)	Cost	(ADP)	(ADP)
Personal Services	\$10,063,233	\$38,263	\$104.83	\$527,975	\$11,999	\$32.88	\$10,591,208	\$34,499	\$94.52
Operating	271,825	1,034	2.83	205,959	4,681	12.82	477,784	1,556	4.26
Contract Services	666,976	2,536	6.95	1,131,626	25,719	70.46	1,798,602	5,859	16.05
Education Contracts	173,586	660	1.81		0	0.00	173,586	565	1.55
Purchase of Services - CMHIP	250,144	951	2.61		0	0.00	250,144	815	2.23
Purchased Medical Services	1,311,374	4,986	13.66	189,751	4,313	11.82	1,501,125	4,890	13.40
Medical Expense	961,543	3,656	10.02		0	0.00	961,543	3,132	8.58
Central Administration Add-on	265,894	1,011	2.77	47,543	1,081	2.96	313,437	1,021	2.80
Total Expenditures	\$13,964,575	\$53,097	\$145.47	\$2,102,854	\$47,792	\$130.94	\$16,067,429	\$52,337	\$143.39

*The Y.O.S. facility at Pueblo includes the program expenditures, personnel and inmate population figures associated with 60 adult female offenders temporarily housed at the Y.O.S. facility. 22.0 FTE and 43 ADP are specific to the adult female population.

SECTION V - Offender Profiles

The characteristics of the offenders participating in Y.O.S. show the uniqueness of this program specifically designed for violent youthful offenders. General demographic data on the offenders include age, ethnicity, and gender. Sentencing information is provided on the county of commitment, most serious crime conviction, and class of felony. Criminal history collected for youthful offenders includes prior commitment to the Division of Youth Corrections (DYC), aggravated juvenile offender (AJO), repeat juvenile offender (RJO), violent juvenile offender (VJO), and prior probation.

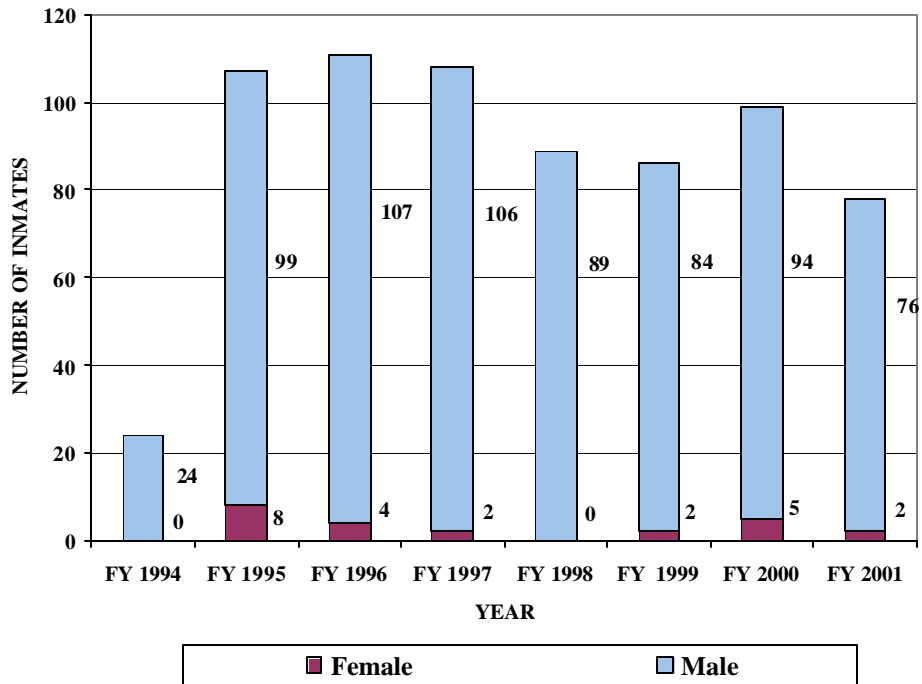
~ Admission Trends ~

The Youthful Offender System opened in March 1994. The tables on the following pages illustrate the District Attorney and judicial use of this unique sentencing option, intended for violent juvenile offenders since its inception. Highlights of the admissions for fiscal year 2001 are listed below and profiled in more detail on pages 47 through 51.

- ⇒ 76 of the 78 offenders were male.
- ⇒ Over 51% of these offenders were convicted of a class 3 felony.
- ⇒ The mean age at admission was 17 years of age.
- ⇒ Nearly 36% of admissions were Hispanic.
- ⇒ El Paso County was responsible for 19.2% of the admissions.

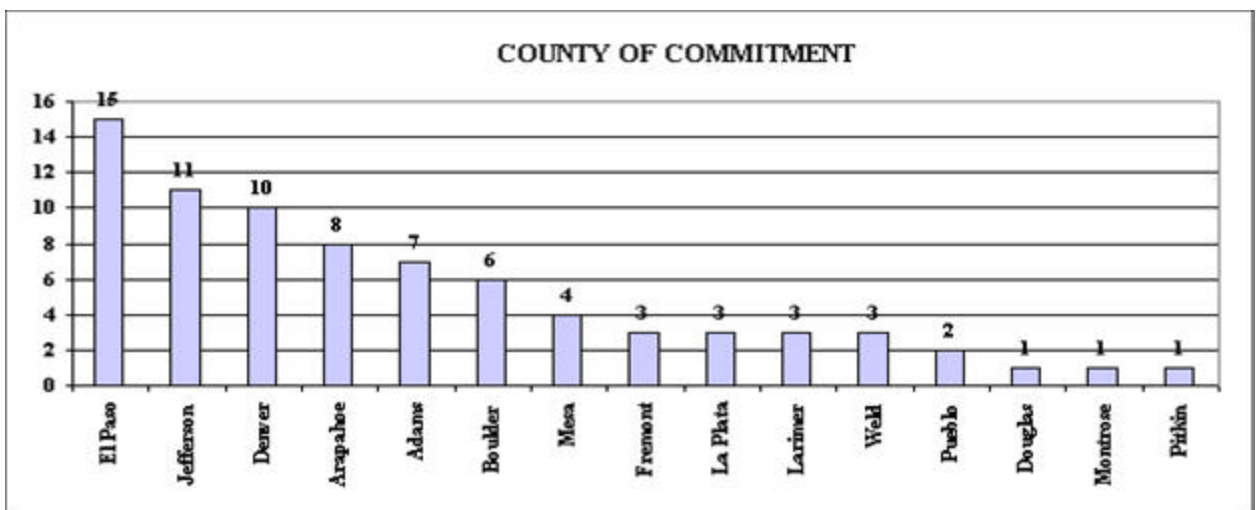
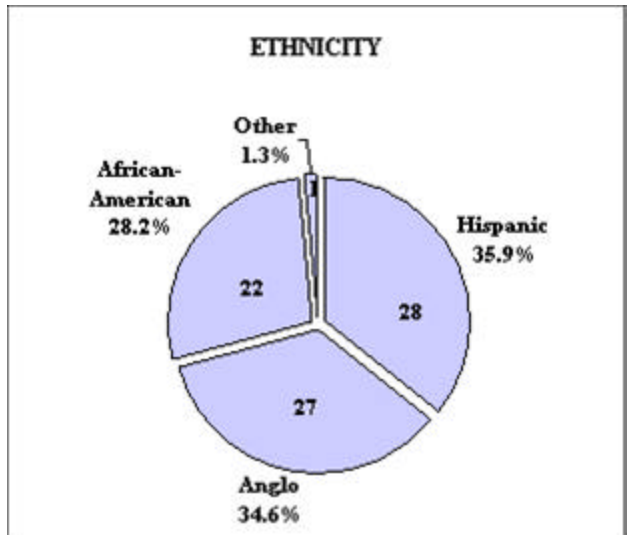
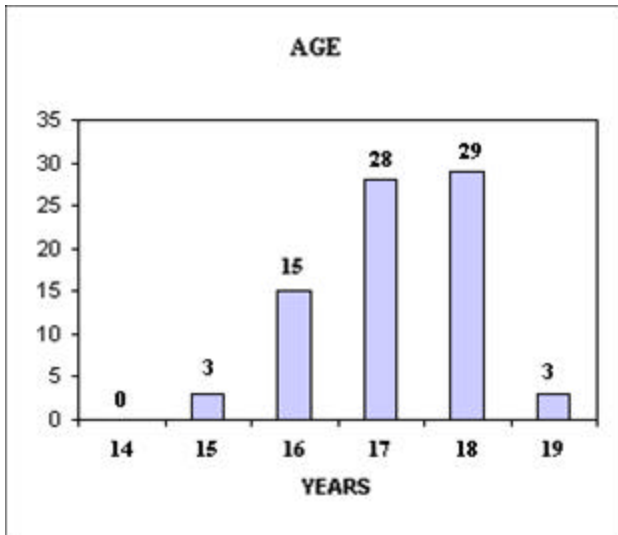
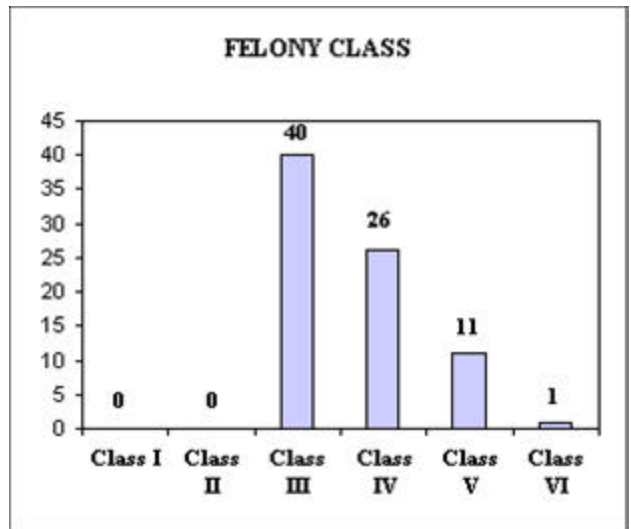
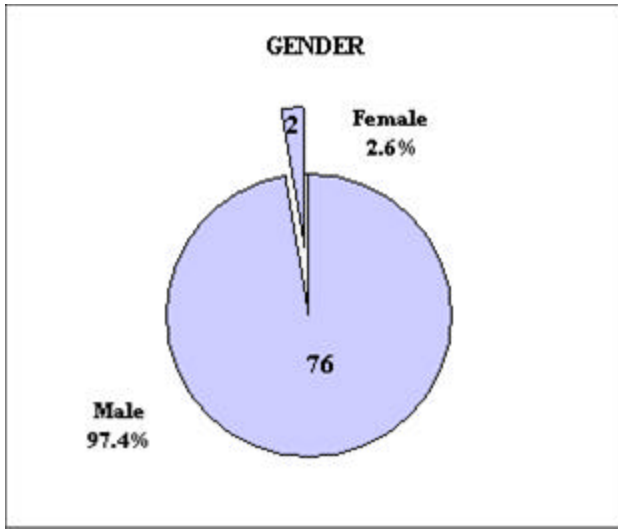
Long-term sentencing trends are shown on pages 50 and 51. Distributions of ethnicity, age, felony class, and county of commitment are provided for each fiscal year since the program began.

**GENDER DISTRIBUTION
FOR ADMISSIONS**

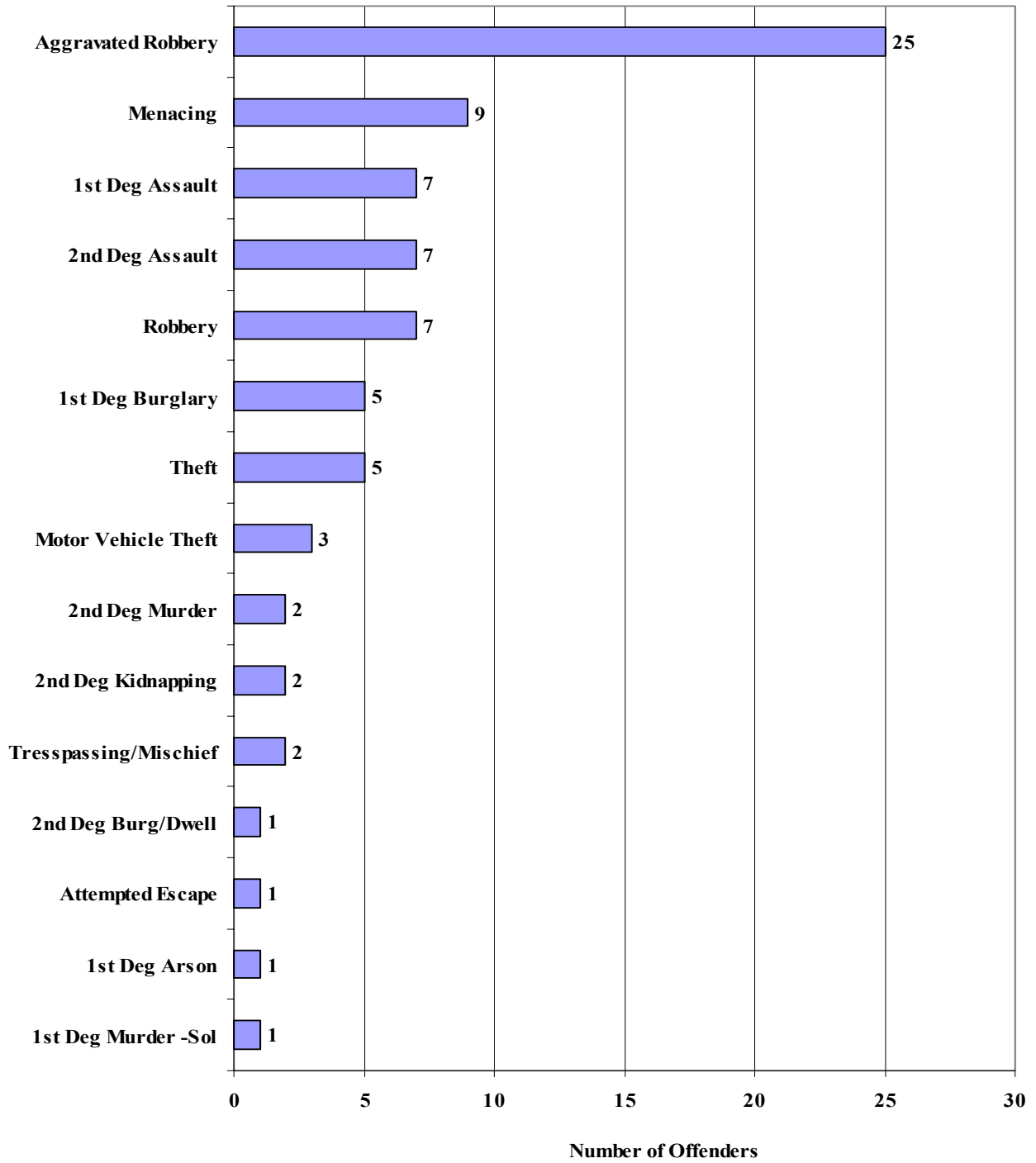


- ⇒ 702 offenders have been sentenced to Y.O.S. since March 1994, an average of 8 offenders per month.
- ⇒ 23 female offenders have been sentenced to Y.O.S., only 3.3% of the total.
- ⇒ Fiscal Year 2001 admissions were 29.7% lower than 1996 when the number of admissions peaked at 111.

**FISCAL YEAR 2000-2001
ADMISSIONS (N=78)**

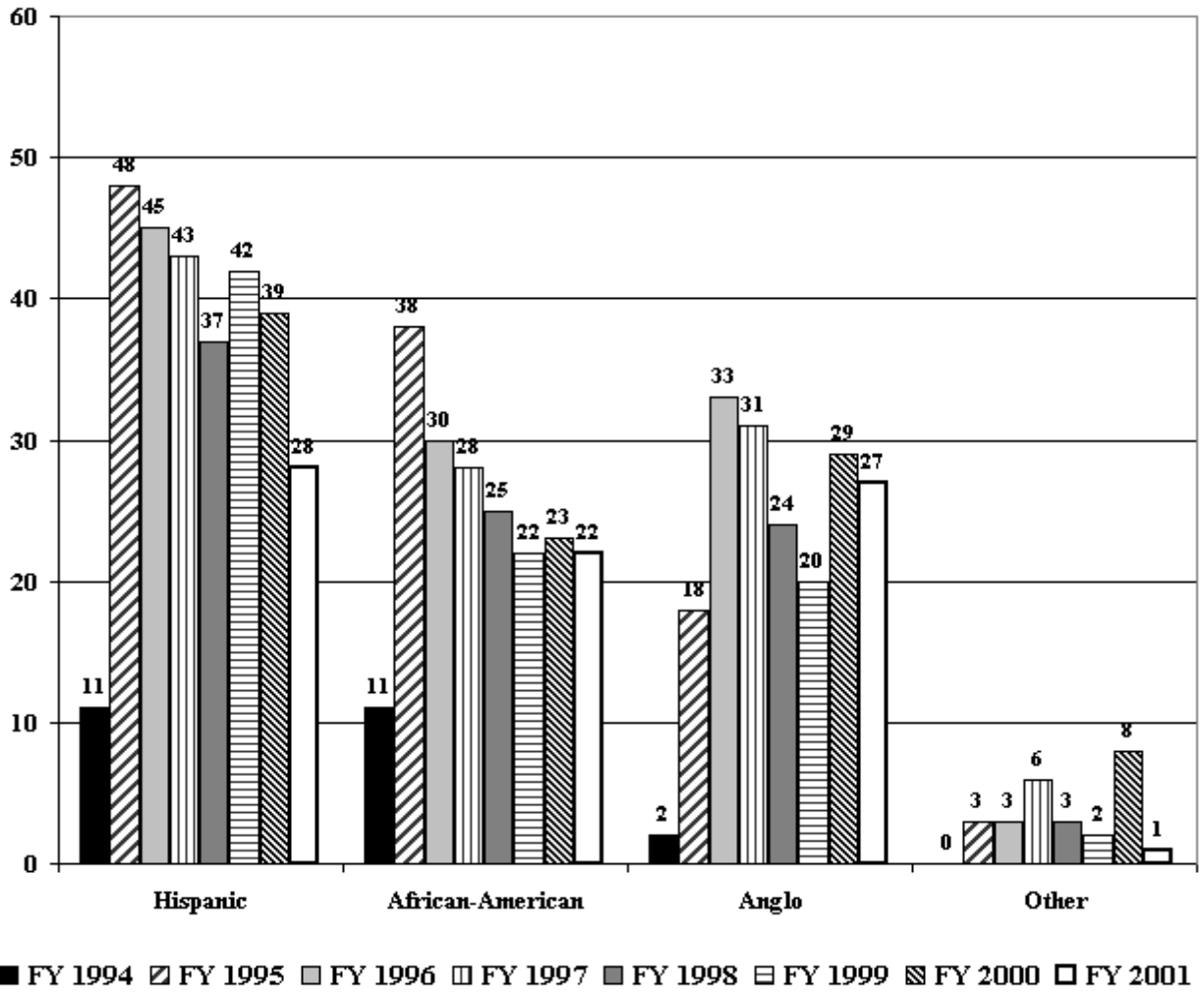


MOST SERIOUS CRIME*
Fiscal Year 2001 Admissions



*Crime categories include attempt, conspiracy, solicitation or accessory to the offense.

**ETHNICITY DISTRIBUTION
ADMISSIONS TO-DATE
(N=702)**



Hispanic		African-American		Anglo		Other	
TOTAL	% OF TOTAL	TOTAL	% OF TOTAL	TOTAL	% OF TOTAL	TOTAL	% OF TOTAL
212	33.0%	154	24.0%	216	33.6%	61	9.5%

DISTRIBUTION OF ADMISSIONS

(N=702)

Y.O.S. ANNUAL REPORT

January 30, 2002

Page 51

AGE	FISCAL YEAR 1994		FISCAL YEAR 1995		FISCAL YEAR 1996		FISCAL YEAR 1997		FISCAL YEAR 1998		FISCAL YEAR 1999		FISCAL YEAR 2000		FISCAL YEAR 2001	
	TOTAL	% OF TOTAL	TOTAL	% OF TOTAL	TOTAL	% OF TOTAL	TOTAL	% OF TOTAL	TOTAL	% OF TOTAL	TOTAL	% OF TOTAL	TOTAL	% OF TOTAL	TOTAL	% OF TOTAL
14	0	0.00%	2	1.87%	3	2.70%	1	0.93%	4	4.49%	1	1.16%	2	2.02%	0	0.00%
15	1	4.17%	11	10.28%	20	18.02%	13	12.04%	11	12.36%	6	6.98%	6	6.06%	3	3.85%
16	10	41.67%	25	23.36%	26	23.42%	32	29.63%	23	25.84%	20	23.26%	26	26.26%	15	19.23%
17	11	45.83%	51	47.66%	39	35.14%	45	41.67%	30	33.71%	31	36.05%	40	40.40%	28	35.90%
18	2	8.33%	17	15.89%	21	18.92%	14	12.96%	21	23.60%	27	31.40%	21	21.21%	29	37.18%
19	0	0.00%	0	0.00%	2	1.80%	3	2.78%	0	0.00%	1	1.16%	4	4.04%	3	3.85%
20	0	0.00%	1	0.93%	0	0.00%	0	0.00%	0	0.00%	0	0.00%	0	0.00%	0	0.00%

FELONY CLASS	FISCAL YEAR 1994		FISCAL YEAR 1995		FISCAL YEAR 1996		FISCAL YEAR 1997		FISCAL YEAR 1998		FISCAL YEAR 1999		FISCAL YEAR 2000		FISCAL YEAR 2001	
	TOTAL	% OF TOTAL	TOTAL	% OF TOTAL	TOTAL	% OF TOTAL	TOTAL	% OF TOTAL	TOTAL	% OF TOTAL	TOTAL	% OF TOTAL	TOTAL	% OF TOTAL	TOTAL	% OF TOTAL
Class I	0	0.00%	0	0.00%	0	0.00%	0	0.00%	0	0.00%	0	0.00%	0	0.00%	0	0.00%
Class II	1	4.17%	0	0.00%	0	0.00%	0	0.00%	0	0.00%	1	1.16%	2	2.02%	0	0.00%
Class III	2	8.33%	42	39.25%	46	41.44%	45	41.67%	34	38.20%	39	45.35%	48	48.48%	40	51.28%
Class IV	15	62.50%	44	41.12%	50	45.05%	45	41.67%	43	48.31%	32	37.21%	42	42.42%	26	33.33%
Class V	5	20.83%	20	18.69%	15	13.51%	16	14.81%	10	11.24%	14	16.28%	7	7.07%	11	14.10%
Class VI	1	4.17%	1	0.93%	0	0.00%	2	1.85%	2	2.25%	0	0.00%	0	0.00%	1	1.28%

COUNTY OF COMMITMENT	FISCAL YEAR 1994		FISCAL YEAR 1995		FISCAL YEAR 1996		FISCAL YEAR 1997		FISCAL YEAR 1998		FISCAL YEAR 1999		FISCAL YEAR 2000		FISCAL YEAR 2001	
	TOTAL	% OF TOTAL	TOTAL	% OF TOTAL	TOTAL	% OF TOTAL	TOTAL	% OF TOTAL	TOTAL	% OF TOTAL	TOTAL	% OF TOTAL	TOTAL	% OF TOTAL	TOTAL	% OF TOTAL
Denver	10	41.67%	32	29.91%	19	17.12%	18	16.67%	16	17.98%	15	17.44%	19	19.19%	10	12.82%
Arapahoe	0	0.00%	21	19.63%	18	16.22%	14	12.96%	15	16.85%	5	5.81%	9	9.09%	8	10.26%
El Paso	4	16.67%	12	11.21%	23	20.72%	31	28.70%	15	16.85%	21	24.42%	23	23.23%	15	19.23%
Jefferson	3	12.50%	8	7.48%	9	8.11%	9	8.33%	15	16.85%	8	9.30%	13	13.13%	11	14.10%
Adams	3	12.50%	11	10.28%	7	6.31%	10	9.26%	7	7.87%	10	11.63%	10	10.10%	7	8.97%
Pueblo	1	4.17%	2	1.87%	5	4.50%	5	4.63%	7	7.87%	6	6.98%	3	3.03%	2	2.56%
Weld	1	4.17%	7	6.54%	3	2.70%	3	2.78%	5	5.62%	6	6.98%	9	9.09%	3	3.85%
Other	2	8.3%	14	13.1%	27	24.3%	18	16.7%	9	10.1%	15	17.4%	13	13.13%	22	28.21%

~ Y.O.S. Total Releases ~

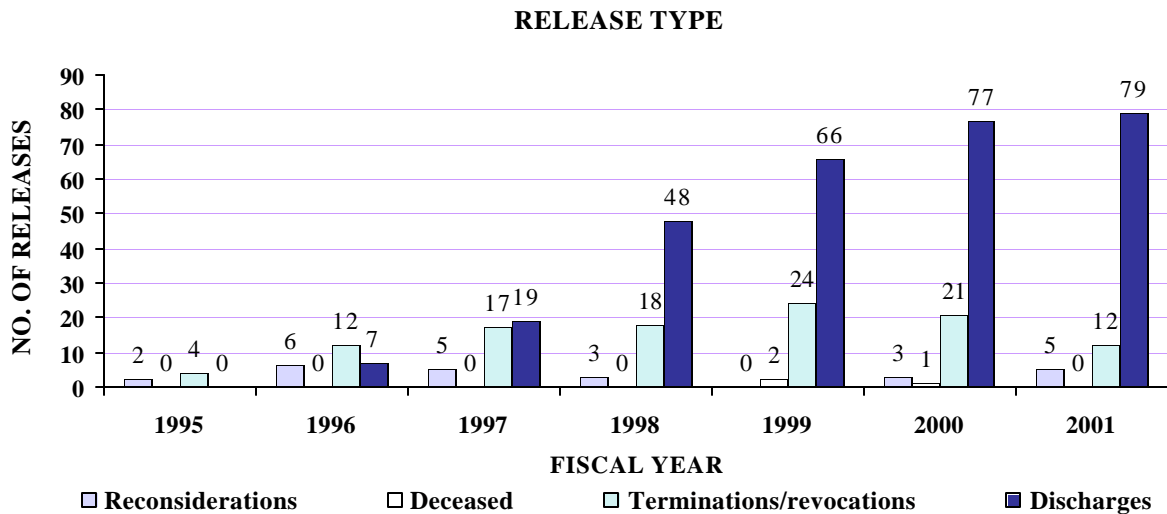
Types of Releases from Y.O.S. to Date:

Judicial reconsiderations include offenders who were sentenced to Y.O.S. but were removed by the courts through a court order discharge, release to appeal bond, release to probation, or transfer to adult prison. Judicial reconsideration resulting in a transfer to adult prison may include an additional conviction that is not eligible for Y.O.S., such as a sexual assault or identification of the offender as not meeting the age requirements.

Deceased includes homicide, suicide, natural, accidental, and other deaths.

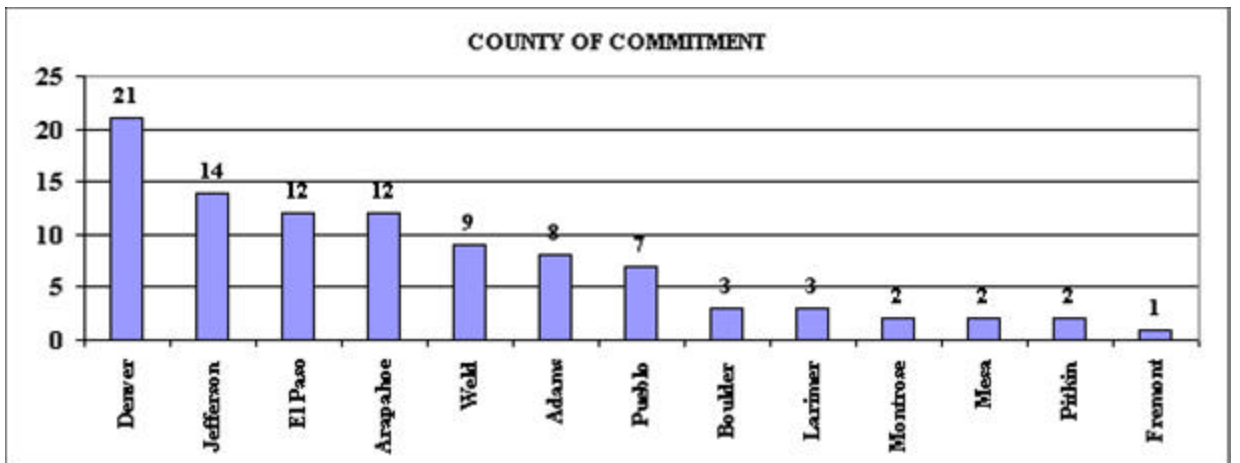
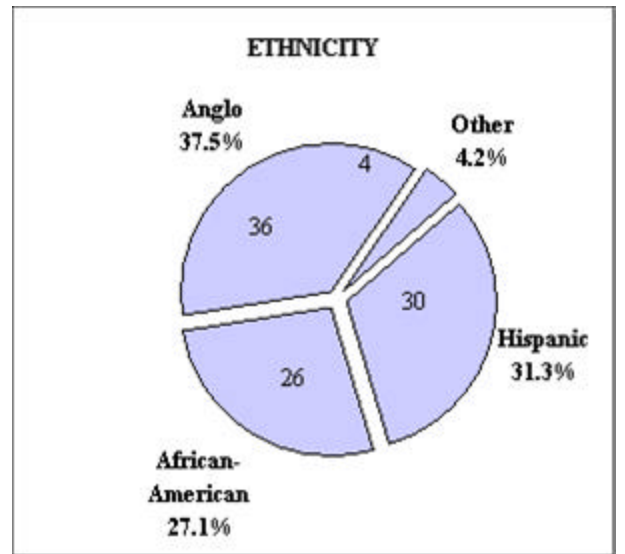
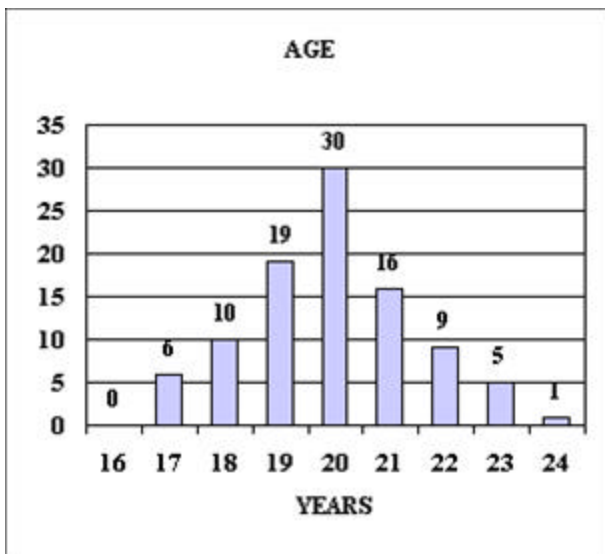
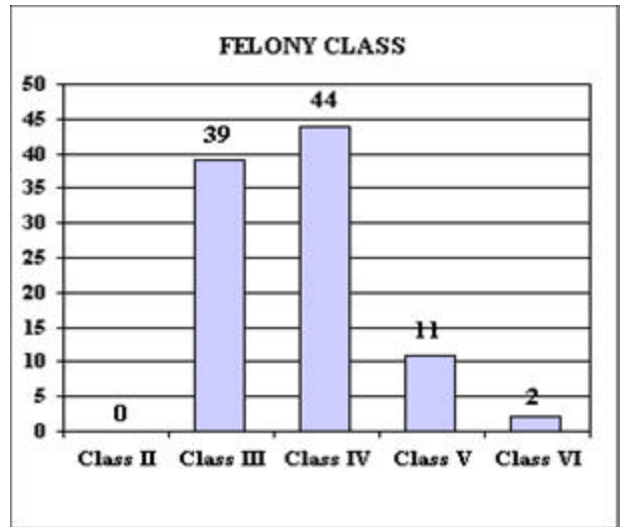
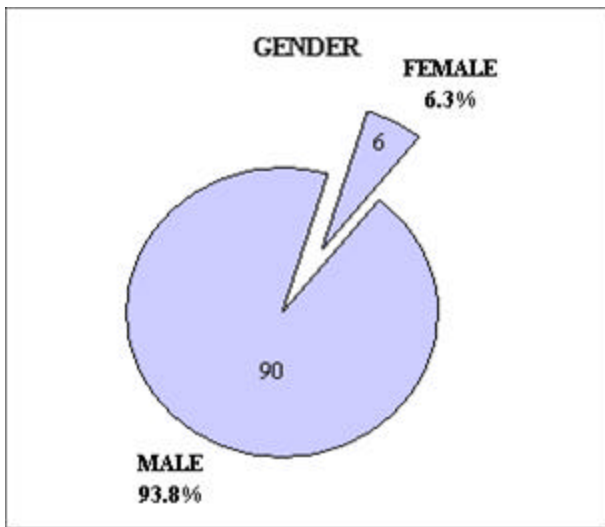
Terminations/revocations include all offenders who were removed from the program for noncompliance, continuing violent behavior, or failure to progress in the program. These offenders receive a revocation and the original adult prison sentence is imposed by the courts.

Discharges include offenders who serve the entire Y.O.S. sentence imposed.

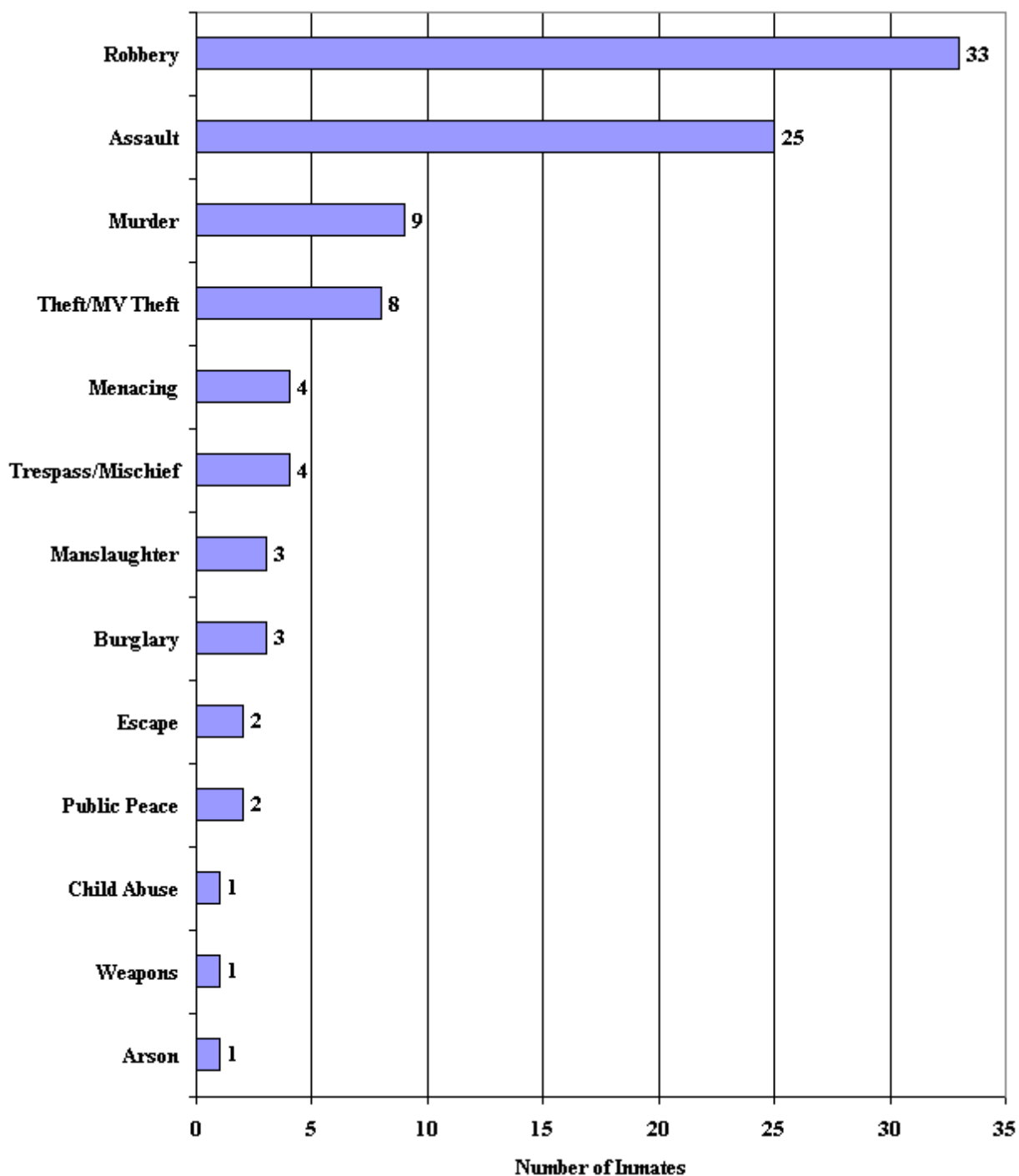


Fiscal Year	Reconsiderations		Deceased		Terminations/revocations		Discharges		Total
	No.	% of total	No.	% of total	No.	% of total	No.	% of total	
1995	2	33%	0	0%	4	67%	0	0%	6
1996	6	24%	0	0%	12	48%	7	28%	25
1997	5	12%	0	0%	17	42%	19	46%	41
1998	3	4%	0	0%	18	26%	48	70%	69
1999	0	0%	2	2%	24	26%	66	72%	92
2000	3	3%	1	1%	21	21%	77	75%	102
2001	5	5%	0	0%	12	13%	79	82%	96
Total	24	5%	3	1%	108	25%	296	69%	431

**FISCAL YEAR 2000-2001
RELEASES (N=96)**



MOST SERIOUS CRIME*
Fiscal Year 2001 Releases



*Crime categories include attempt, conspiracy, solicitation or accessory to the offense.

~ Population Characteristics by Program ~

The characteristics of the offender population as of June 30, 2001 by program phase are shown below. Five offenders in jail backlog are reported in IDO/phase I.

POPULATION AS OF JUNE 30, 2001

	IDO/ PHASE I		RFP/ REM		PHASE II		PHASE III		TOTAL	
	NO.	% OF TOTAL	NO.	% OF TOTAL	NO.	% OF TOTAL	NO.	% OF TOTAL	NO.	% OF TOTAL
Total No. of inmates	203	74.9%	10	3.7%	16	5.9%	42	15.5%	271	100.0%
Gender Distribution										
	IDO/ PHASE I		RFP/ REM		PHASE II		PHASE III		TOTAL	
	NO.	% OF TOTAL	NO.	% OF TOTAL	NO.	% OF TOTAL	NO.	% OF TOTAL	NO.	% OF TOTAL
Male	197	97.0%	10	100.0%	16	100.0%	40	95.2%	263	97.0%
Female	6	3.0%	0	0.0%	0	0.0%	2	4.8%	8	3.0%
Age Distribution										
	IDO/ PHASE I		RFP/ REM		PHASE II		PHASE III		TOTAL	
	NO.	% OF TOTAL	NO.	% OF TOTAL	NO.	% OF TOTAL	NO.	% OF TOTAL	NO.	% OF TOTAL
14	0	0.0%	0	0.0%	0	0.0%	0	0.0%	0	0.0%
15	2	1.0%	0	0.0%	0	0.0%	0	0.0%	2	0.7%
16	13	6.4%	1	10.0%	1	6.3%	0	0.0%	15	5.5%
17	31	15.3%	1	10.0%	1	6.3%	0	0.0%	33	12.2%
18	66	32.5%	2	20.0%	3	18.8%	5	11.9%	76	28.0%
19	49	24.1%	3	30.0%	2	12.5%	6	14.3%	60	22.1%
20	25	12.3%	2	20.0%	4	25.0%	14	33.3%	45	16.6%
21	12	5.9%	0	0.0%	3	18.8%	10	23.8%	25	9.2%
22	5	2.5%	1	10.0%	1	6.3%	4	9.5%	11	4.1%
23	0	0.0%	0	0.0%	1	6.3%	3	7.1%	4	1.5%

POPULATION AS OF JUNE 30, 2001

Ethnicity Distribution										
Continued	IDO/ Phase I		RFP/ REM		PHASE II		PHASE III		TOTAL	
	No.	% of Total	No.	% of Total	No.	% of Total	No.	% of Total	No.	% of Total
Hispanic	86	42.4%	5	50.0%	7	43.8%	19	45.2%	117	43.2%
Anglo	56	27.6%	1	10.0%	5	31.3%	11	26.2%	73	26.9%
African-Am.	51	25.1%	4	40.0%	4	25.0%	9	21.4%	68	25.1%
Asian	5	2.5%	0	0.0%	0	0.0%	0	0.0%	5	1.8%
Native Am.	3	1.5%	0	0.0%	0	0.0%	2	4.8%	5	1.8%
Unknown	2	1.0%	0	0.0%	0	0.0%	1	2.4%	3	1.1%
Class of Felony										
	IDO/ Phase I		RFP/ REM		PHASE II		PHASE III		TOTAL	
	No.	% of Total	No.	% of Total	No.	% of Total	No.	% of Total	No.	% of Total
II	3	1.5%	0	0.0%	0	0.0%	0	0.0%	3	1.1%
III	124	61.1%	6	60.0%	6	37.5%	20	47.6%	156	57.6%
IV	63	31.0%	4	40.0%	10	62.5%	16	38.1%	93	34.3%
V	13	6.4%	0	0.0%	0	0.0%	6	14.3%	19	7.0%
VI	0	0.0%	0	0.0%	0	0.0%	0	0.0%	0	0.0%

POPULATION AS OF JUNE 30, 2001

County Distribution										
	IDO/ Phase I		RFP/ REM		PHASE II		PHASE III		TOTAL	
	No.	% of Total	No.	% of Total	No.	% of Total	No.	% of Total	No.	% of Total
Denver	37	18.2%	0	0.0%	4	25.0%	6	14.3%	47	17.3%
El Paso	44	21.7%	1	10.0%	2	12.5%	12	28.6%	59	21.8%
Arapahoe	22	10.8%	1	10.0%	3	18.8%	5	11.9%	31	11.4%
Jefferson	22	10.8%	2	20.0%	1	6.3%	5	11.9%	30	11.1%
Adams	21	10.3%	1	10.0%	0	0.0%	5	11.9%	27	10.0%
Weld	9	4.4%	2	20.0%	1	6.3%	1	2.4%	13	4.8%
Mesa	9	4.4%	1	10.0%	0	0.0%	1	2.4%	11	4.1%
Pueblo	8	4.0%	2	20.0%	0	0.0%	0	0.0%	10	3.7%
Larimer	8	4.0%	0	0.0%	0	0.0%	2	4.8%	10	3.7%
Other	23	11.3%	0	0.0%	5	31.3%	5	11.9%	33	12.2%

POPULATION AS OF JUNE 30, 2001

Most Serious Crime Distribution

	IDO/ PHASE I		RFP/ REM		PHASE II		PHASE III		TOTAL	
	No.	% of Total	No.	% of Total	No.	% of Total	No.	% of Total	No.	% of Total
Robbery	73	36.0%	5	50.0%	4	25.0%	10	23.8%	92	33.9%
Assault	53	26.1%	2	20.0%	6	37.5%	13	31.0%	74	27.3%
Murder	19	9.4%	0	0.0%	0	0.0%	4	9.4%	23	8.5%
Burglary	20	9.9%	0	0.0%	0	0.0%	3	7.1%	23	8.5%
Menacing	12	5.9%	0	0.0%	0	0.0%	3	7.1%	15	5.5%
Theft/Motor Vehicle Theft	7	3.4%	1	10.0%	3	18.8%	2	4.8%	13	4.8%
Vehicular Homicide	4	2.0%	1	10.0%	0	0.0%	2	4.8%	7	2.6%
Arson	3	1.5%	0	0.0%	0	0.0%	1	2.4%	4	1.5%
Manslaughter	2	1.0%	0	0.0%	0	0.0%	1	2.4%	3	1.1%
Weapons	1	0.5%	0	0.0%	0	0.0%	2	4.8%	3	1.1%
Criminal Mischief	1	0.5%	0	0.0%	1	6.3%	0	0.0%	2	0.7%
Drug Abuse	1	0.5%	0	0.0%	1	6.3%	1	2.4%	3	1.1%
Escape	1	0.5%	0	0.0%	1	6.3%	0	0.0%	2	0.7%
Court/Witness	2	1.0%	0	0.0%	0	0.0%	0	0.0%	2	0.7%
Kidnapping	3	1.5%	1	10.0%	0	0.0%	0	0.0%	4	1.5%
Sexual Assault	1	0.5%	0	0.0%	0	0.0%	0	0.0%	1	0.4%

❖ PARTICIPATION IN PROGRAM PHASES ❖
TERMINATIONS AND COMPLETIONS
NO. OF OFFENDERS
THROUGH JUNE 30, 2001

	Jail Backlog	IDO	Phase I	Phase II	Phase III	TOTAL
TOTAL NUMBER OF OFFENDERS ENTERING INTO EACH PHASE	702 ⁽¹⁾	696	663	396 ^(2,3)	377 ^(2,3)	702 ⁽¹⁾
TERMINATIONS:						
Court Ordered	1		19	1	3	24
Death					3	3
Termination/Revocation		27	47	2	32	108
TOTAL TERMINATIONS	1	27	66	3	38	135
COMPLETIONS/ GRADUATIONS	696	663	398 ^(2,3)	377 ⁽³⁾	294	296 ⁽³⁾
STILL IN PHASE as of June 30, 2001	5	6 ⁽⁵⁾	199 ^(4, 6)	16	45 ⁽⁷⁾	271

¹Does not include one offender who spent one month in IDO and three months in phase I with an invalid Y.O.S. sentence.

²One offender went from phase 1 to phase 3 without going through phase 2, due to Mandatory Community Date.

³One offender sentence discharged from phase 1 and one offender sentence discharged from phase 2.

⁴One phase I offender was in the infirmary and counted as off-grounds on the Monthly Report.

⁵Two offenders were in RFP.

⁶Two offenders were in REM and three offenders were in RFP.

⁷Three offenders were in RFP.

TERMINATIONS AND COMPLETIONS
AVERAGE TIME (Months) IN PHASE
THROUGH JUNE 30, 2000

Exit Type	Jail Backlog	IDO	Phase I	Phase II	Phase III
TERMINATIONS:					
Court Ordered	0.9		16.8	2.5	8.9
Death					8.0
Termination/Revocation		5.0	17.2	9.3	8.5
TERMINATION AVERAGE	0.9	5.0	17.1	7.0	8.5
COMPLETIONS	0.5	1.4	23.2	3.1	9.1
OVERALL AVERAGE	0.5	1.5	22.3	3.1	9.0

OVERALL AVERAGE TIME IN Y.O.S. PROGRAM BY EXIT TYPE

Exit Type	Number of Exits	Time In (months) Y.O.S.
Court Ordered	24	20.6
Death	3	31.2
Termination/Revocation	108	19.5
Sentence Discharged	296	36.8
Total Releases	431	31.5

SECTION VI - Recidivism and Reoffense

Recidivism is defined by Colorado Department of Corrections administrative regulation as the return to prison in Colorado for either new criminal activity or technical violations of parole, probation, or non-departmental community placement within three years of release. Although 296 offenders completed their Y.O.S. sentence, 19 of these offenders were in the process of being revoked at the time of discharge. These offenders are extracted for the analysis and computation of recidivism and re-offense rates, as they have been readmitted to DOC under the original adult prison sentence. The recent Supreme Court decision (00SA389 People v. Miller) will allow the Department to proceed with revocation of offenders instead of discharging the sentence. This will affect cases after June 2001.

Offenders who have been discharged for at least three years include releases from the beginning of the program through fiscal year 1997-98. The table below computes the recidivism rate for these 70 offenders who have been out for three years or more. Thirteen offenders (18.6%) have been readmitted to DOC for new felony convictions within three years of release.

RECIDIVISM RATES FOR Y.O.S. DISCHARGES
RETURN TO D.O.C. WITHIN 3 YEARS

Release Year (FY)	Number of Discharges (1)	Number Returned to DOC (2)	Percent Returned
1995-96	7	1	14.3%
1996-97	17	2	11.8%
1997-98	46	10	21.7%
Total	70	13	18.6%

(1) Excludes 4 offenders (2 in FY97 and 2 in FY98) in the process of revocation at time of discharge.

(2) Excludes offenders returned to DOC after three years.

Cumulative return rates for all sentence discharges to date are shown below. A total of 40 offenders have been sentenced to adult prison for new felony convictions since completing the Y.O.S. sentence, a rate of 14.4% for the 277 discharges released through June 2001. This is lower than the three-year recidivism rate as the recent releases have only been out for a short period of time. Twenty of the 70 offenders released in the first three years have returned for a cumulative return rate of 28.6% over the long term.

The 277 discharges have been discharged for an average time of 30.8 months, with a range of 6 months to the longest time out of 72 months. The average time from release to DOC return was 22.8 months for the 40 recidivists, with a range of less than one month to 58 months.

**CUMULATIVE RETURN RATES FOR Y.O.S. DISCHARGES
RETURN TO DOC
AS OF DECEMBER 31, 2001**

Release Year (FY)	Number of Releases (1)	Return to DOC			
		Within 3 Years	After 3 Years	Total Returned	Percent Returned
1995-96	7	1	1	2	28.6%
1996-97	17	2	4	6	35.3%
1997-98	46	10	2	12	26.1%
1998-99	64	9	--	9	14.1%
1999-2000	69	8	--	8	11.6%
2000-01	74	3	--	3	4.1%
Total	277	33	7	40	14.4%

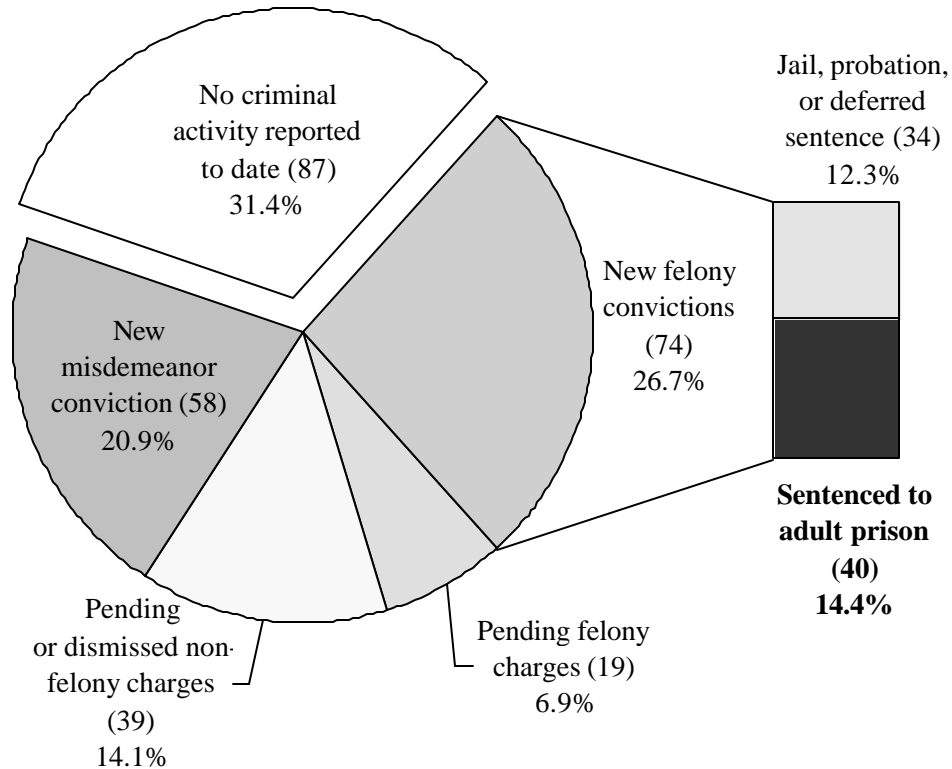
(1) Excludes 19 offenders in the process of revocation at time of discharge.

Extensive research was conducted to calculate re-offense rates for the 277 offenders who have discharged from the Y.O.S. program. Criminal justice records were retrieved from numerous sources including Colorado Bureau of Investigations, Federal Bureau of Investigations, Colorado District Attorneys' Council, and Colorado Judicial Department. The search was complicated by the lack of common identifiers within and outside the Colorado criminal justice system. Colorado state identifier numbers (SID's) were missing or temporary

numbers were assigned and other information such as name and date of birth were often inconsistent, requiring additional research to match the offender's arrest, conviction, and sentencing record.

The re-offense research findings are summarized in the chart below. A more complete chart is contained at the end of this report, detailing the types of felonies and non-DOC sentence dispositions by year of release. This chart indicates that 26.7% of the offenders received new felony convictions but only 14.4% received a prison sentence for the new crime. 31.4% of the offenders have no criminal activity or involvement reported to date.

**Criminal Activity of Discharged Offenders
Status As of December 31, 2001**



**SECTION VII -
program Interventions**

CORE PROGRAM INTERVENTIONS

CORE ACTIVITIES	IDO	PHASE ONE	PHASE TWO	PHASE THREE
<i>ELIGIBILITY ASSESSMENT</i>	<i>X</i>			
<i>YOS ASSESSMENT</i>	<i>X</i>			
<i>YOS MENTAL & PHYSICAL HEALTH SCREENING</i>	<i>X</i>			<i>X</i>
<i>INDIVIDUALIZED PROGRAM PLAN</i>	<i>X</i>	<i>X</i>	<i>X</i>	<i>X</i>
<i>BREAKDOWN OF GANG AFFILIATION</i>	<i>X</i>	<i>X</i>	<i>X</i>	<i>X</i>
<i>GANG EDUCATION</i>	<i>X</i>	<i>X</i>	<i>X</i>	<i>X</i>
<i>PHYSICAL REGIMENTATION</i>	<i>X</i>	<i>X</i>	<i>X</i>	
<i>GUIDED GROUP INTERACTION</i>		<i>X</i>	<i>X</i>	
<i>RELAPSE PREVENTION</i>		<i>X</i>	<i>X</i>	<i>X</i>
<i>MODIFIED THERAPEUTIC COMMUNITY (POSITIVE PEER CULTURE)</i>		<i>X</i>	<i>X</i>	
<i>CONFRONTING CRIMINAL THINKING ERRORS</i>	<i>X</i>	<i>X</i>	<i>X</i>	<i>X</i>
<i>SKILLS OF DAILY LIVING</i>	<i>X</i>	<i>X</i>	<i>X</i>	<i>X</i>
<i>LEISURE SKILLS</i>	<i>X</i>	<i>X</i>	<i>X</i>	<i>X</i>
<i>SELF-HELP GROUPS</i>		<i>X</i>	<i>X</i>	<i>X</i>
<i>BABY THINK IT OVER</i>			<i>X</i>	
<i>AIDS EDUCATION/PREVENTION</i>		<i>X</i>	<i>X</i>	<i>X</i>
<i>DRUG EDUCATION</i>		<i>X</i>	<i>X</i>	<i>X</i>
<i>INDIVIDUAL COUNSELING</i>	<i>X</i>	<i>X</i>	<i>X</i>	<i>X</i>
<i>RELAPSE PREVENTION SUPPORT GROUP</i>			<i>X</i>	<i>X</i>

SUPPLEMENTARY PROGRAM INTERVENTIONS

SUPPLEMENTAL ACTIVITIES	IDO	PHASE ONE	PHASE TWO	PHASE THREE
<i>ANGER MANAGEMENT</i>		<i>X</i>	<i>X</i>	<i>X</i>
<i>PROBLEM-SOLVING SKILLS</i>	<i>X</i>	<i>X</i>	<i>X</i>	<i>X</i>
<i>STRESS MANAGEMENT</i>		<i>X</i>	<i>X</i>	<i>X</i>
<i>PARENTING SKILLS</i>		<i>X</i>	<i>X</i>	<i>X</i>
<i>COMMUNICATIONS SKILLS</i>		<i>X</i>	<i>X</i>	<i>X</i>
<i>ASSERTIVENESS SKILLS</i>		<i>X</i>	<i>X</i>	<i>X</i>
<i>RECREATION</i>	<i>X</i>	<i>X</i>	<i>X</i>	<i>X</i>
<i>COMMUNITY MEETINGS</i>			<i>X</i>	
<i>RESTITUTION PLANNING</i>		<i>X</i>	<i>X</i>	<i>X</i>
<i>FAMILY REINTEGRATION</i>	<i>X</i>	<i>X</i>	<i>X</i>	<i>X</i>

VOCATIONAL & EDUCATIONAL INTERVENTIONS

VOCATIONAL & EDUCATIONAL ACTIVITIES	IDO	PHASE ONE	PHASE TWO	PHASE THREE
<i>ACADEMIC PROGRAM/HIGH SCHOOL</i>		<i>X</i>	<i>X</i>	<i>X</i>
<i>EDUCATIONAL ASSESSMENT</i>	<i>X</i>	<i>X</i>	<i>X</i>	<i>X</i>
<i>INDIVIDUALIZED EDUCATIONAL TRAINING PLAN</i>	<i>X</i>	<i>X</i>	<i>X</i>	<i>X</i>
<i>PRE-VOCATIONAL TRAINING</i>		<i>X</i>	<i>X</i>	<i>X</i>
<i>VOCATIONAL TRAINING</i>		<i>X</i>		<i>X</i>
<i>INSTITUTIONAL EMPLOYMENT</i>		<i>X</i>	<i>X</i>	
<i>POST SECONDARY ACADEMIC PROGRAM</i>		<i>X</i>	<i>X</i>	<i>X</i>

**SECTION VIII -
Daily Schedule**

DAILY SCHEDULE

Y.O.S. INTAKE, DIAGNOSTIC, AND ORIENTATION

WEEK ONE

TIME PERIOD	INTAKE	ZERO DAY	DAY 1	DAY 2	DAY 3
06:00	6:00 - 11:30 INTAKE DAY INMATES DELIVERED TO DRDC FROM COUNTY JAILS	WAKE UP	WAKE UP	WAKE UP	WAKE UP
06:00 - 06:30		BREAKFAST	BREAKFAST	BREAKFAST	BREAKFAST
06:30 - 07:00		MEDICAL SCREENING - COMPLETE PHYSICAL EXAMINATIONS FOR ALL Y.O.S. INTAKE	PERSONAL HYGIENE, MEDLINE, TRAINING UNIFORMS - YELLOWS	PERSONAL HYGIENE, POD CLEAN-UP, MEDLINE, TRAINING UNIFORMS - YELLOWS	PERSONAL HYGIENE, MEDLINE, AND TRAINING UNIFORMS - YELLOWS
07:00 - 07:30					
07:30 - 08:00					
08:00 - 08:30					
08:30 - 09:00		HAIRCUTS	FOLLOW-UP COMMANDS, PHYSICAL TRAINING	PHYSICAL TRAINING P.T. TEST	P.T. TEST
09:00 - 09:30		STAFF DEBRIEFING 9:50 STAFF WILL STAGE THEMSELVES			
09:30 - 10:00		LUNCH IN CELL, ZERO DAY BEGINS			
10:00 - 10:30		COUNT			
10:30 - 11:00		ZERO DAY CONTINUES	LUNCH	LUNCH	LUNCH
11:00 - 11:30			MEDLINE & PERSONAL HYGIENE	MEDLINE & PERSONAL HYGIENE	MEDLINE & PERSONAL HYGIENE
11:30 - 12:00			STRESS TRAINING BEGINS IN POD	DRILL & CEREMONY TRAINING	DRILL & CEREMONY TRAINING
12:00 - 12:30					
12:30 - 13:00					
13:00 - 13:30	OFFENDERS LOCKED DOWN 13:10 - DEBRIEFING IN IDO CONFERENCE ROOM				
13:30 - 14:00					

DAILY SCHEDULE

Y.O.S. INTAKE, DIAGNOSTIC, AND ORIENTATION

WEEK ONE (CONTINUED)

TIME PERIOD	INTAKE	ZERO DAY	DAY 1	DAY 2	DAY 3	
14:00 - 14:30	IDENTIFY BODY MARKS, FINGERPRINT, ISSUE Y.O.S. JUMPSUIT, UNDERWEAR, & BOOTS	MILITARY DISCIPLINE TRAINING IN POD	CELL INSPECTIONS	CELL INSPECTIONS	CELL INSPECTIONS	
14:30 - 15:00		DRILL & CEREMONY POSITION OF ATTENTION	PHYSICAL TRAINING AND DRILL & CEREMONY	PHYSICAL TRAINING AND DRILL & CEREMONY	PHYSICAL TRAINING AND DRILL & CEREMONY	
15:00 - 15:30						
15:30 - 16:00						LOCKSTEP POSITION
16:00 - 16:30	COUNT	COUNT	COUNT	COUNT	COUNT	
16:30 - 17:00	ISSUE BED ROLL	DINNER	DINNER	DINNER	DINNER	
17:00 - 17:30	ASSIGN CELL	HEAD CALLS/WATER	STUDY KNOWLEDGE	STUDY KNOWLEDGE	STUDY KNOWLEDGE	
17:30 - 18:00	DINNER FEED IN CELL	LOCKSTEP MARCH				
18:00 - 18:30	ISSUE CLOTHING & HYGIENE ITEMS	MILITARY DISCIPLINE	DRILL AND CEREMONY/P.T.	DRILL AND CEREMONY/P.T.	SUNDAY LETTER WRITING	
18:30 - 19:00	MEDICAL HISTORY OF 2-6 CLIENTS	TRAINING IN POD			REINFORCEMENT TRAINING	
19:00 - 19:30		MAKING BEDS, PROPER PROPERTY STORAGE IPT - GROUP				
19:30 - 20:00	ORIENTATION TO Y.O.S. PROGRAM	MEDLINE, SHOWERS, AND SNACKS	POD & ROOM CLEAN-UP	POD & ROOM CLEAN-UP	POD & ROOM CLEAN-UP	
20:00 - 20:30			MEDLINE, SHOWERS, AND SNACKS	MEDLINE, SHOWERS, AND SNACKS	MEDLINE, SHOWERS, AND SNACKS	MEDLINE, SHOWERS, AND SNACKS
20:30 - 21:00						
21:00 - 21:30	LOCK DOWN	LOCK DOWN	LOCK DOWN	LOCK DOWN	LOCK DOWN	
21:30	LIGHTS OUT - COUNT	LIGHTS OUT - COUNT	LIGHTS OUT - COUNT	LIGHTS OUT - COUNT	LIGHTS OUT - COUNT	

DAILY SCHEDULE

Y.O.S. INTAKE, DIAGNOSTIC, AND ORIENTATION

WEEKS TWO, THREE, AND FOUR

TIME PERIOD	MONDAY DAY 1	TUESDAY DAY 2	WEDNESDAY DAY 3	THURSDAY DAY 4	FRIDAY DAY 5	SATURDAY DAY 6	SUNDAY DAY 7
06:00	WAKE UP	WAKE UP	WAKE UP	WAKE UP	WAKE UP	WAKE UP	WAKE UP
06:00 - 06:30	BREAKFAST	BREAKFAST	BREAKFAST	BREAKFAST	BREAKFAST	BREAKFAST	BREAKFAST
06:30 - 07:00	PERSONAL HYGIENE, PRIDE ZONE, LAUNDRY TURN-IN, POD CLEAN-UP, MEDLINE, AND CHANGE INTO TRAINING UNIFORM	PERSONAL HYGIENE, PRIDE ZONE, LAUNDRY TURN-IN, POD CLEAN-UP, MEDLINE, AND CHANGE INTO TRAINING UNIFORM	PERSONAL HYGIENE, PRIDE ZONE, LAUNDRY TURN-IN, POD CLEAN-UP, MEDLINE, AND CHANGE INTO TRAINING UNIFORM	PERSONAL HYGIENE, PRIDE ZONE, LAUNDRY TURN-IN, POD CLEAN-UP, MEDLINE, AND CHANGE INTO TRAINING UNIFORM	PERSONAL HYGIENE, PRIDE ZONE, LAUNDRY TURN-IN, POD CLEAN-UP, MEDLINE, AND CHANGE INTO TRAINING UNIFORM	PERSONAL HYGIENE, PRIDE ZONE, POD CLEAN-UP, MEDLINE, AND CHANGE INTO TRAINING UNIFORM	PERSONAL HYGIENE, PRIDE ZONE, MEDLINE, AND CHANGE INTO TRAINING UNIFORM
07:00 - 07:30							
07:30 - 08:00							
08:00 - 08:30	PHYSICAL TRAINING	PHYSICAL TRAINING	PHYSICAL TRAINING	PHYSICAL TRAINING	PHYSICAL TRAINING	PHYSICAL TRAINING	PHYSICAL TRAINING
08:30 - 09:00							
09:00 - 09:30							
09:30 - 10:00							
10:00 - 10:30							
10:30 - 11:00	COUNT - CHANGE TO DUTY UNIFORM	COUNT - CHANGE TO DUTY UNIFORM	COUNT - CHANGE TO DUTY UNIFORM	COUNT - CHANGE TO DUTY UNIFORM	COUNT - CHANGE TO DUTY UNIFORM	COUNT - CHANGE TO DUTY UNIFORM	COUNT - CHANGE TO DUTY UNIFORM
11:00 - 11:30	LUNCH	LUNCH	LUNCH	LUNCH	LUNCH	LUNCH	LUNCH
11:30 - 12:00	MEDLINE & PERSONAL HYGIENE	MEDLINE & PERSONAL HYGIENE	MEDLINE & PERSONAL HYGIENE	MEDLINE & PERSONAL HYGIENE	MEDLINE & PERSONAL HYGIENE	MEDLINE & PERSONAL HYGIENE	MEDLINE & PERSONAL HYGIENE
12:00 - 12:30	DRILL & CEREMONY TRAINING	DRILL & CEREMONY TRAINING	DRILL & CEREMONY TRAINING	DRILL & CEREMONY TRAINING	DRILL & CEREMONY TRAINING	DRILL & CEREMONY TRAINING	DRILL & CEREMONY TRAINING
12:30 - 13:00							
13:00 - 13:30							
13:30 - 14:00							

DAILY SCHEDULE

Y.O.S. INTAKE, DIAGNOSTIC, AND ORIENTATION

WEEKS TWO, THREE, AND FOUR (CONTINUED)

TIME PERIOD	MONDAY DAY 1	TUESDAY DAY 2	WEDNESDAY DAY 3	THURSDAY DAY 4	FRIDAY DAY 5	SATURDAY DAY 6	SUNDAY DAY 7
14:00 - 14:30	PHYSICAL TRAINING AND DRILL & CEREMONY	PHYSICAL TRAINING AND DRILL & CEREMONY	PHYSICAL TRAINING AND DRILL & CEREMONY	PHYSICAL TRAINING AND DRILL & CEREMONY	PHYSICAL TRAINING AND DRILL & CEREMONY	PHYSICAL TRAINING AND DRILL & CEREMONY	PHYSICAL TRAINING AND DRILL & CEREMONY
14:30 - 15:00							
15:00 - 15:30							
15:30 - 16:00							
16:00 - 16:30	COUNT	COUNT	COUNT	COUNT	COUNT	COUNT	COUNT
16:30 - 17:00	DINNER	DINNER	DINNER	DINNER	DINNER	DINNER	DINNER
17:00 - 17:30	STUDY TIME	STUDY TIME	STUDY TIME	STUDY TIME	STUDY TIME	STUDY TIME	STUDY TIME
17:30 - 18:00							
18:00 - 18:30	DRILL AND CEREMONY/P.T.	DRILL AND CEREMONY/P.T.	DRILL AND CEREMONY/P.T.	DRILL AND CEREMONY/P.T.	DRILL AND CEREMONY/P.T.	DRILL AND CEREMONY/P.T.	WEEKLY REVIEW
18:30 - 19:00							
19:00 - 19:30							LETTER WRITING
19:30 - 20:00	POD & ROOM CLEAN-UP	POD & ROOM CLEAN-UP	POD & ROOM CLEAN-UP	POD & ROOM CLEAN-UP	POD & ROOM CLEAN-UP	POD & ROOM CLEAN-UP	
20:00 - 20:30	MEDLINE, SHOWERS, AND SNACKS	MEDLINE, SHOWERS, AND SNACKS	MEDLINE, SHOWERS, AND SNACKS	MEDLINE, SHOWERS, AND SNACKS	MEDLINE, SHOWERS, AND SNACKS	MEDLINE, SHOWERS, AND SNACKS	MEDLINE, SHOWERS, AND SNACKS CLEAN-UP
20:30 - 21:00							
21:00 - 21:30	LOCK DOWN	LOCK DOWN	LOCK DOWN	LOCK DOWN	LOCK DOWN	LOCK DOWN	LOCK DOWN
21:30	LIGHTS OUT - COUNT	LIGHTS OUT - COUNT	LIGHTS OUT - COUNT	LIGHTS OUT - COUNT	LIGHTS OUT - COUNT	LIGHTS OUT - COUNT	LIGHTS OUT - COUNT

On day 15, program decisions are made and khakis are issued to offenders

Additional events on day 29 include medical, mental health, educational, D&A assessments/retesting as needed, program teams, issuing of maroons, and pod maintenance.

Day 30 consists of a motivational run, family visits/tours, and a formal graduation ceremony which marks the transition into phase I.

DAILY SCHEDULE
Y.O.S. INTAKE, DIAGNOSTIC, AND ORIENTATION
WEEKS TWO, THREE, AND FOUR (CONTINUED)
ADDITIONAL EVENTS AND SIGNIFICANT DAYS

TIME PERIOD	DAY 14	DAY 15	DAY 29	DAY 30
6:00	WAKE UP	WAKE UP	WAKE UP	WAKE UP
06:00 - 06:30	BREAKFAST	BREAKFAST	BREAKFAST	BREAKFAST
06:30 - 07:00	ADDITIONAL: PROGRAM TEAM REVIEWS COMPLETED	ADDITIONAL: PROGRAM TEAM DECISIONS MADE ISSUE KHAKIS	ADDITIONAL: MENTAL HEALTH, MEDICAL, EDUCATIONAL AND D&A RETESTING AS NEEDED PROGRAM TEAMS SECURITY THREAT GROUPS BUILDING MAINTENANCE ISSUE MAROONS	MOTIVATIONAL RUN FAMILIES VISIT & TOUR FACILITY FORMAL GRADUATION CEREMONY - TRANSITION INTO PHASE I OFFENDERS INTRODUCED TO PHASE I STAFF
07:00 - 07:30				
07:30 - 08:00				
08:00 - 08:30				
08:30 - 09:00				
09:00 - 09:30				
09:30 - 10:00				
10:00 - 10:30				
10:30 - 11:00				
11:00 - 11:30				
11:30 - 12:00				
12:00 - 12:30				

Events on days 14, 15 and 29 are in addition to standard schedule for IDO weeks 2, 3 and 4.

DAILY SCHEDULE

Y.O.S. INTAKE, DIAGNOSTIC, AND ORIENTATION

REMEDATION							
TIME PERIOD	MONDAY DAY 1	TUESDAY DAY 2	WEDNESDAY DAY 3	THURSDAY DAY 4	FRIDAY DAY 5	SATURDAY DAY 6	SUNDAY DAY 7
06:00	WAKE UP	WAKE UP	WAKE UP	WAKE UP	WAKE UP	WAKE UP	WAKE UP
06:00 - 06:30	BREAKFAST	BREAKFAST	BREAKFAST	BREAKFAST	BREAKFAST	BREAKFAST	BREAKFAST
06:30 - 07:00	PERSONAL HYGIENE LAUNDRY TURN-IN	PERSONAL HYGIENE LAUNDRY TURN-IN	PERSONAL HYGIENE LAUNDRY TURN-IN	PERSONAL HYGIENE LAUNDRY TURN-IN	PERSONAL HYGIENE	PERSONAL HYGIENE, PRIDE ZONE, POD CLEAN-UP, MEDLINE, AND CHANGE INTO TRAINING UNIFORM	PERSONAL HYGIENE, PRIDE ZONE, POD CLEAN-UP, MEDLINE, AND CHANGE INTO TRAINING UNIFORM
07:00 - 07:30	TRAINING/P.T.	TRAINING/P.T.	TRAINING/P.T.	TRAINING/P.T.	TRAINING/P.T.		
07:30 - 08:00							
08:00 - 08:30	PERSONAL HYGIENE	PERSONAL HYGIENE	PERSONAL HYGIENE	PERSONAL HYGIENE	PERSONAL HYGIENE	TRAINING/P.T. TEST CHANGE TO DUTY UNIFORM	TRAINING/ DETAILS MORAL VALUE TESTING
08:30 - 09:00	PRIDE ZONE/WORK DETAIL	PRIDE ZONE/WORK DETAIL	PRIDE ZONE/WORK DETAIL	PRIDE ZONE/WORK DETAIL	PRIDE ZONE/WORK DETAIL		
09:00 - 09:30							
09:30 - 10:00	LUNCH	LUNCH	LUNCH	LUNCH	LUNCH	LUNCH	LUNCH
10:00 - 10:30	COUNT	COUNT	COUNT	COUNT	COUNT	COUNT	COUNT
10:30 - 11:00							
11:00 - 11:30	PERSONAL HYGIENE/DETAIL	PERSONAL HYGIENE/DETAIL	PERSONAL HYGIENE/DETAIL	PERSONAL HYGIENE/DETAIL	PERSONAL HYGIENE/DETAIL	PERSONAL HYGIENE/DETAIL	PERSONAL HYGIENE/DETAIL
11:30 - 12:00	MEDLINE & PERSONAL HYGIENE	MEDLINE & PERSONAL HYGIENE	MEDLINE & PERSONAL HYGIENE	MEDLINE & PERSONAL HYGIENE	MEDLINE & PERSONAL HYGIENE	MEDLINE & PERSONAL HYGIENE	MEDLINE & PERSONAL HYGIENE
12:00 - 12:30	PRIDE ZONE/WORK DETAIL	PRIDE ZONE/WORK DETAIL	PRIDE ZONE/WORK DETAIL	PRIDE ZONE/WORK DETAIL	PRIDE ZONE/WORK DETAIL	TRAINING/ DETAILS	TRAINING/ DETAILS
12:30 - 13:00							
13:00 - 13:30							
13:30 - 14:00							

DAILY SCHEDULE

YOUTHFUL OFFENDER SYSTEM

PHASE 1

TIME PERIOD	MONDAY DAY 1	TUESDAY DAY 2	WEDNESDAY DAY 3	THURSDAY DAY 4	FRIDAY DAY 5	SATURDAY DAY 6	SUNDAY DAY 7
05:30	WAKE UP/CHORES	WAKE UP/CHORES	WAKE UP/CHORES	WAKE UP/CHORES	WAKE UP/CHORES	WAKE UP/CHORES	WAKE UP/CHORES
06:00 - 06:30	BREAKFAST	BREAKFAST	BREAKFAST	BREAKFAST	BREAKFAST	BREAKFAST	BREAKFAST
06:30 - 07:00	HYGIENE, CLEAN-UP & MEDLINE 6:45-7:40	HYGIENE, CLEAN-UP & MEDLINE 6:45-7:40	HYGIENE, CLEAN-UP & MEDLINE 6:45-7:40	HYGIENE, CLEAN-UP & MEDLINE 6:45-7:40	HYGIENE, CLEAN-UP & MEDLINE 6:45-7:40	HYGIENE, CLEAN-UP & MEDLINE 6:45-7:40	HYGIENE, CLEAN-UP & MEDLINE 6:45-7:40
07:00 - 07:30							
07:30 - 08:00	ACADEMICS: EDUCATION, VOCATIONAL, AND COGNITIVE	ACADEMICS: EDUCATION, VOCATIONAL, AND COGNITIVE	ACADEMICS: EDUCATION, VOCATIONAL, AND COGNITIVE	ACADEMICS: EDUCATION, VOCATIONAL, AND COGNITIVE	ACADEMICS: EDUCATION, VOCATIONAL, AND COGNITIVE	RECREATION & LEISURE TIME ACTIVITIES	RECREATION & LEISURE TIME ACTIVITIES
08:00 - 08:30							
08:30 - 09:00							
09:00 - 09:30							
09:30 - 10:00							
10:00 - 10:30	COUNT 10:00	COUNT 10:00	COUNT 10:00	COUNT 10:00	COUNT 10:00	COUNT 10:00	COUNT 10:00
10:30 - 11:00							SUNDAY SERVICES
11:00 - 11:30	LUNCH AND MEDLINE	LUNCH AND MEDLINE	LUNCH AND MEDLINE	LUNCH AND MEDLINE	LUNCH AND MEDLINE	LUNCH AND MEDLINE	LUNCH AND MEDLINE
11:30 - 12:00	HYGIENE 11:40-12:20	HYGIENE 11:40-12:20	HYGIENE 11:40-12:20	HYGIENE 11:40-12:20	HYGIENE 11:40-12:20	HYGIENE 11:40-12:20	HYGIENE 11:40-12:20
12:00 - 12:30							
12:30 - 13:00	ACADEMICS: EDUCATION, VOCATIONAL, AND COGNITIVE 12:20-15:30	ACADEMICS: EDUCATION, VOCATIONAL, AND COGNITIVE 12:20-15:30	ACADEMICS: EDUCATION, VOCATIONAL, AND COGNITIVE 12:20-15:30	ACADEMICS: EDUCATION, VOCATIONAL, AND COGNITIVE 12:20-15:30	ACADEMICS: EDUCATION, VOCATIONAL, & COGNITIVE JUMAH SERVICES	RECREATION & LEISURE TIME ACTIVITIES	RECREATION & LEISURE TIME ACTIVITIES
13:00 - 13:30							
13:30 - 14:00							

DAILY SCHEDULE
YOUTHFUL OFFENDER SYSTEM
REMOVAL FROM POPULATION*

TIME PERIOD	MONDAY DAY 1	TUESDAY DAY 2	WEDNESDAY DAY 3	THURSDAY DAY 4	FRIDAY DAY 5	SATURDAY DAY 6	SUNDAY DAY 7
06:00	Y.O.S. REVEILLE	Y.O.S. REVEILLE	Y.O.S. REVEILLE	Y.O.S. REVEILLE	Y.O.S. REVEILLE	Y.O.S. REVEILLE	Y.O.S. REVEILLE
06:00 - 06:30	BREAKFAST	BREAKFAST	BREAKFAST	BREAKFAST	BREAKFAST	BREAKFAST	BREAKFAST
06:30 - 07:00	CONFINEMENT	CONFINEMENT	CONFINEMENT	CONFINEMENT	CONFINEMENT	CONFINEMENT	CONFINEMENT
07:00 - 07:30	WHITES/YELLOWS EXCHANGE	LINEN PICK UP	KHAKI EXCHANGE	WHITES/YELLOWS TURN-IN			LIBRARY BOOK EXCHANGE
07:30 - 08:00	CONFINEMENT	CONFINEMENT	LIBRARY BOOK EXCHANGE	CONFINEMENT			CONFINEMENT
08:00 - 08:30			CONFINEMENT				CONFINEMENT
08:30 - 09:00	MEDLINE	MEDLINE	MEDLINE	MEDLINE	MEDLINE	MEDLINE	MEDLINE
09:00 - 09:30	CONFINEMENT	CONFINEMENT	CONFINEMENT	CONFINEMENT	CONFINEMENT	CONFINEMENT	CONFINEMENT
09:30 - 10:00		RELIGIOUS VOLUNTEER				RELIGIOUS VOLUNTEER	
10:00 - 10:30	COUNT	COUNT	COUNT	COUNT	COUNT	COUNT	COUNT
10:30 - 11:00	CONFINEMENT	CONFINEMENT	CONFINEMENT	CONFINEMENT	CONFINEMENT	CONFINEMENT	CONFINEMENT
11:00 - 11:30	LUNCH	LUNCH	LUNCH	LUNCH	LUNCH	LUNCH	LUNCH
11:30 - 12:00	1 HR OUT FOR HIGH AND MED STATUS	CONFINEMENT	CONFINEMENT	CONFINEMENT	CONFINEMENT	CONFINEMENT	1 HOUR OUT FOR HIGH AND MED STATUS
12:00 - 12:30							
12:30 - 13:00		MED APPTS					
13:00 - 13:30	NURSE WELFARE CHECK - KIT PICK-UP, EDUCATIONAL REQUESTS	NURSE WELFARE CHECK - KIT PICK-UP	NURSE WELFARE CHECK - KIT PICK-UP	NURSE WELFARE CHECK - KIT PICK-UP, EDUCATIONAL REQUESTS	NURSE WELFARE CHECK - KIT PICK-UP, MENTAL HEALTH ONE ON ONE	NURSE WELFARE CHECK - KIT PICK-UP	NURSE WELFARE CHECK - KIT PICK-UP
13:30 - 14:00							

*OFFENDERS HAVE ONE HOUR OUT OF THEIR CELLS EACH DAY

DAILY SCHEDULE YOUTHFUL OFFENDER SYSTEM

REMOVAL FROM POPULATION (CONTINUED)*							
TIME PERIOD	MONDAY DAY 1	TUESDAY DAY 2	WEDNESDAY DAY 3	THURSDAY DAY 4	FRIDAY DAY 5	SATURDAY DAY 6	SUNDAY DAY 7
14:00 - 14:30	HIGH OR INTERMEDIATE STATUS 1 HR OUT	HIGH OR INTERMEDIATE STATUS 1 HR OUT	HIGH OR INTERMEDIATE STATUS 1 HR OUT	HIGH OR INTERMEDIATE STATUS 1 HR OUT	HIGH OR INTERMEDIATE STATUS 1 HR OUT	HIGH OR INTERMEDIATE STATUS 1 HR OUT	HIGH OR INTERMEDIATE STATUS 1 HR OUT
14:30 - 15:00							
15:00 - 15:30	DINNER	DINNER	DINNER	DINNER	DINNER	DINNER	DINNER
15:30 - 16:00	1 HR GYM FOR LOW STATUS	CONFINEMENT	1 HR GYM FOR LOW STATUS	CONFINEMENT	1 HR GYM FOR LOW STATUS	CONFINEMENT	CONFINEMENT
16:00 - 16:30	MOVIES/T.V. TIME 2- 3 TIMES/WK**	MOVIES/T.V. TIME 2- 3 TIMES/WK**	MOVIES/T.V. TIME 2- 3 TIMES/WK**	MOVIES/T.V. TIME 2- 3 TIMES/WK**	MOVIES/T.V. TIME 2- 3 TIMES/WK**	MOVIES/T.V. TIME 2- 3 TIMES/WK**	MOVIES/T.V. TIME 2- 3 TIMES/WK**
16:30 - 17:00	CANTEEN	CONFINEMENT	CONFINEMENT	CONFINEMENT	CONFINEMENT	CONFINEMENT	CONFINEMENT
17:00 - 17:30	MAIL	MAIL	MAIL	MAIL	MAIL	MAIL	MAIL
17:30 - 18:00	CONFINEMENT	CONFINEMENT	LIBRARY BOOK DISTRIBUTION	RELIGIOUS SERVICES	CONFINEMENT	CONFINEMENT	CONFINEMENT
18:00 - 18:30			CONFINEMENT	CONFINEMENT			
18:30 - 19:00			CONFINEMENT	CONFINEMENT			
19:00 - 19:30	SNACKS	SNACKS	SNACKS	SNACKS	SNACKS	SNACKS	SNACKS
19:30 - 20:00	SHOWERS	SHOWERS	SHOWERS	SHOWERS	SHOWERS	SHOWERS	SHOWERS
20:00 - 20:30	CLEAN UP OF POD	CLEAN UP OF POD	CLEAN UP OF POD	CLEAN UP OF POD	CLEAN UP OF POD	CLEAN UP OF POD	CLEAN UP OF POD
20:30 - 21:00	CONFINEMENT	CONFINEMENT	CONFINEMENT	CONFINEMENT	CONFINEMENT	CONFINEMENT	CONFINEMENT
21:00 - 21:30	NURSE WELFARE CHECK KIT PICK-UP	NURSE WELFARE CHECK KIT PICK-UP	NURSE WELFARE CHECK KIT PICK-UP	NURSE WELFARE CHECK KIT PICK-UP	NURSE WELFARE CHECK KIT PICK-UP	NURSE WELFARE CHECK KIT PICK-UP	NURSE WELFARE CHECK KIT PICK-UP
22:00	LIGHTS OUT	LIGHTS OUT	LIGHTS OUT	LIGHTS OUT	LIGHTS OUT	LIGHTS OUT	LIGHTS OUT

*OFFENDERS HAVE ONE HOUR OUT OF THEIR CELLS EACH DAY

**DEPENDS ON STATUS AND BEHAVIOR

SECTION IX -
Reoffense rates

**REOFFENSE RATES OF Y.O.S. DISCHARGES
AS OF DECEMBER 31, 2001**

	RELEASE YEAR												TOTAL	
	FY 95-96		FY 96-97		FY 97-98		FY 98-99		FY99-00		FY00-01			
	Number of Offenders	Percent of Discharges	Number of Offenders	Percent of Discharges	Number of Offenders	Percent of Discharges	Number of Offenders	Percent of Discharges	Number of Offenders	Percent of Discharges	Number of Offenders	Percent of Discharges	Number of Offenders	Percent of Discharges
TOTAL DISCHARGES	7		19		48		66		77		79		296	
Less Discharges in Process of Revocation(1)	0		2		2		2		8		5		19	
DISCHARGES - Not Revoked	7		17		46		64		69		74		277	
CONVICTIONS:														
Return to DOC (2)	2	28.6%	6	35.3%	12	26.1%	9	14.1%	8	11.6%	3	4.1%	40	14.4%
Jail	1		1		1		5		1				9	
Comm. Corrections Diversion									1				1	
Probation (ISP)					1				2				3	
Probation	1				4		4		4		1		14	
Deferred/Pending Sentence			1		4		1		1				7	
Subtotal-Felony Conviction	4	57.1%	8	47.1%	22	47.8%	19	29.7%	17	24.6%	4	5.4%	74	26.7%
Misdemeanor Conviction	2		2		6		16		12		5		43	
Traffic/Other Conviction			2		6		1		2		4		15	
TOTAL CONVICTIONS	6	85.7%	12	70.6%	34	73.9%	36	56.3%	31	44.9%	13	17.6%	132	47.7%
PENDING FELONY CHARGES:														
Homicide							1		2		2		5	
Kidnapping													0	
Assault											1		1	
Vehicular Eluding									1				1	
Criminal Trespassing									1				1	
Robbery													0	
Weapons									1				1	
Burglary													0	
Theft											4		4	
MV Theft											2		2	
Drugs					1				1				2	
Other non-violent					2								2	
TOTAL - Pending Felony Charges	0	0.0%	0	0.0%	3	6.5%	1	1.6%	6	8.7%	9	12.2%	19	6.9%
OTHER ACTIVITY:														
Pending Misd./Traffic/Other			2		3		9		6		9		29	
Dismissed/Dropped Cases:														
Felony Arrest							1				3		4	
Misd/Traffic/Other Arrest					1		1		1		3		6	
TOTAL - Other Activity	0	0.0%	2	11.8%	4	8.7%	11	17.2%	7	10.1%	15	20.3%	39	14.1%
NO CRIMINAL ACTIVITY	1	14.3%	3	17.6%	5	10.9%	16	25.0%	25	36.2%	37	50.0%	87	31.4%

(1) Offenders discharged Y.O.S. sentence while in the revocation process. FY99-00 includes 2 offenders who returned in July, 2000 (FY00-01).

(2) DOC recidivism is defined as a return to prison in Colorado for either new criminal activity or technical violations of parole, probation or non-departmental community placement within three years of release.