

CR 1.25/2005
c.2



STATE OF COLORADO

COLORADO DEPARTMENT OF CORRECTIONS

2862 South Circle Drive
Colorado Springs, CO 80906-4195
Phone: (719) 579-9580
Fax: (719) 226-4755
Web: www.doc.state.co.us



Bill Owens
Governor
Joe Ortiz
Executive Director

December 1, 2005

Representative Andrew Romanoff
Speaker
House of Representatives

Senator Joan Fitz-Gerald
President
Colorado State Senate

Representative Joe Stengel
Minority Leader
House of Representatives

Senator Andy McElhany
Minority Leader
Colorado State Senate

Re: Annual Report concerning the status of private contract prisons

Ladies and Gentlemen:

It is our pleasure to attach for your review and use the Annual Report concerning the status of private contract prisons.

This report is submitted as directed in 17-1-201 (CRS) Corrections Privatization - Requests for Proposals Process - Duties of department.

If you have any questions, please feel free to call me at (719) 226-4701.

Sincerely,

JOE ORTIZ
Executive Director

Attachment

- cc: Gary Golder, Acting Director of Prison Operations
- L.D. Hay, Director of Administration and Finance
- Lou Archuleta, Manager of Prison Operations
- Alison Morgan, Chief of Private Prisons Monitoring Unit
- Patti Micciche, Public Information Officer
- Karen Hoff, Department of Education



Bill Owens
Governor

Colorado Department of Corrections

REPORT TO THE SPEAKER OF THE HOUSE OF REPRESENTATIVES AND TO THE PRESIDENT OF THE SENATE



Joe Ortiz
Executive Director

CONCERNING THE STATUS OF PRIVATE CONTRACT CORRECTIONAL FACILITIES

The mission of the Private Prison Monitoring Unit (PPMU) is to provide effective and efficient oversight of the private contract facilities, ensuring the safety and security of the public, staff and inmates. Its vision is to provide a seamless transition of services between public and private facilities, resulting in consistent offender management and program services. To successfully accomplish these goals, the PPMU enforces contract provisions which direct the private contract prison operations. In addition to facility monitors, the PPMU staff includes program area specialists, who are able to provide credible feedback and advice to facility management in their respective areas. The facility monitors spend from 50-75% of their time in the facilities providing operations oversight, conducting security and program audits, and training contract staff in essential functions such as Code of Penal Discipline (COPD) processes and case management. The staff conducts unannounced visitor program and drug interdictions to discourage the introduction of contraband into the facilities. The PPMU coordinates interagency emergency drills to increase preparedness and to test the facilities' emergency plans.

The Private Prisons Monitoring Unit (PPMU) was created in 1999, and until last fiscal year, was a cash funded unit with a monitoring fee paid by the private prisons. The current fiscal year funding consists of a combination of General Fund, Cash Fund and Federal Fund. The Department is mandated statutorily to monitor the private prisons, as well as to assess a fee for the workload associated with the review and monitoring of out-of-state inmates housed therein. The level of resources needed for monitoring private prison operations is largely dependent upon the number and size of the facilities, their geographical location and the number of inmates housed in each. As the private prison population continues to increase, the duties and responsibilities of the Private Prisons Monitoring Unit (PPMU) also increases.

Contracts in place for the Fiscal Year 2005/2006 reflect a per diem rate of \$50.28 per inmate per bed-day. There is no monitoring fee assessed to the Counties/Cities for Colorado offenders; however, the fee to monitor non-State offenders remains at \$0.41 per day. Fiscal year 2005-2006 funded capacity is 4,193 of the 4,912 total private bed capacities.

During FY 2004, the Department experienced a dramatic increase in the number of gang-related critical incidents occurring within the Department of Corrections and within the Colorado private prisons. As a matter of public safety and due to the demand to house disruptive security threat group inmates appropriately, the Department requested and received authority to place up to 128 special management inmates identified as most responsible for these activities in out-of-state private prison facilities. CRS 17-1-104.9 precludes the Department from housing inmates with a custody designation higher than medium in private prisons located in Colorado. The Department issued an Invitation for Bid, resulting in a five-year contract with CCA to house this special population in their

Tallahatchie County, Mississippi facility. These inmates were housed at the Tallahatchie County Correctional Facility beginning in June of 2004 and all inmates were returned to Colorado by June 30, 2005.

The PPMU underwent a legislative audit in 2005. This performance audit was conducted pursuant to Section 2-3-103, C.R.S., which authorizes the State Auditor to conduct audits of all departments, institutions, and agencies of state government. Sixteen recommendations were made by the audit committee to improve PPMU's oversight of the private facilities. As a result of these recommendations, the contract for FY 2005/2006 contains significant changes. Some of the major changes include minimum staffing requirement levels, food service compliance, and licensure of medical clinics and liquidated damages for contract non-compliance.

The Department contracts directly with local municipalities, County or City, who are in turn responsible for local oversight and to support the facility operation in the event of an emergency. These political subdivisions have subcontracted the operation of the facilities to private correctional corporations.

The capacity of all of the private facilities is 4, 912. At present, there are only two out of state inmates being housed in the privates. These are two inmates from the state of Washington being housed at Crowley County Correctional Facility. These two are facing court dates as a result of charges they incurred during the July 2004 disturbance at Crowley County Correctional Facility. There are six private contract prisons in Colorado. Four of these facilities are owned and operated by Corrections Corporation of America, a Tennessee based public corporation. The CCA facilities are:

Facility	Bed Capacity/Beds Occupied	Type of Offender
Bent County Correctional Facility (BCCF)	724/718	Male
Crowley County Correctional Facility (CCCF)	1824/1014	Male
Huerfano County Correctional Center (HCCC)	774/762	Male
Kit Carson Correctional Center (KCCC)	820/779	Male

The fifth private correctional facility is the Brush Correctional Facility (BCF) located in Brush, Colorado. This facility is owned and operated by GRW, a Tennessee-based privately-held corporation. BCF incarcerates female offenders. The bed capacity at BCF is 270 and presently 264 beds are occupied.

The sixth private correctional facility is the Cheyenne Mountain Re-Entry Center (CMRC), owned and operated by CEC (Community Education Centers)-based in Roseland, New Jersey. This facility is a result of the enactment of HB 01-1370, directing the Department to issue a request for proposal (RFP) for the construction and operation of a private contract prison to serve as a pre-parole and revocation center to contain at least 300 beds. This facility provides assessment, treatment, and programming services to inmates who meet the mandated criteria. Major program concentrations include drug and alcohol, life skills and community re-entry services. The ultimate outcome should be decreased recidivism rates for inmates who have successfully completed programs. CMRC began accepting inmates on August 15, 2005. The facility has a bed capacity of 500 with 330 inmates at the facility. The department continues to fill the available beds. Given the specialized re-entry focus,

CMRC is monitored jointly by PPMU and the Division of Adult Parole, Community Corrections and YOS.

As required in 17-1-202 (1)(c) C.R.S., each of the CCA facilities has achieved accreditation by the American Correctional Association (ACA), which reflects achievement of national standards in corrections. The Brush Correctional Facility will seek national accreditation in 2006. Pursuant to statute, CMRC has two years to become accredited.

The Colorado PPMU has been recognized nationally as a model in progressive contract facility management. The unit continues to be called upon by other agencies for feedback and information by those who are interested in pursuing or improving contract housing services for their inmates. Officials come to Colorado to discuss our procedures and experiences and tour contract facilities in Colorado.

Exhibit A:

SERVICES PROVIDED BY PRIVATE CONTRACT PRISONS

The private contract facilities are mandated by statute to provide a range of dental, medical, psychological services and diet, education, and work programs at least equal to those services and programs provided by comparable state correctional facilities. The following tables describe program services that are available this year at the private facilities:

PRIVATE PRISONS: Bent County Correctional Facility, Crowley County Correctional Facility, Huerfano County Correctional Center, Kit Carson Correctional Center, Brush Correctional Facility and Cheyenne Mountain Re-Entry Center

Offender Custody Level/Mix Medium, Minimum R, and Minimum

Number of Offenders 4,193 Contracted ADP in FY '05/06. Two Washington State offenders housed at CCCF.

Physical Plant These contracted facilities are rated as capable of safely maintaining 4, 912 offenders.

Special Needs Offenders

	BCCF	CCCF	HCCC	KCCC	BCF	CMRC
Sex Offenders	253	272	211	194	1	1
Mental Health/Chronic Needs	68	93	63	101	1	1
Medical 4 - 5	9	9	11	5	0	0

OFFENDER ASSIGNMENTS:

Institutional Support

	BCCF	CCCF	HCCC	KCCC	BCF	CMRC
Workers	439	610	325	517	65	175
Education	188	291	330	279	52	299
Intensive Labor Program	0	0	0	0	0	0
Specialized Program Participation	0	0	0	0	0	0
Unpaid	22	0	0	0	0	0
Unassigned	41	85	55	173	77	6
Canteen	4	0	1	5	0	0

Job Coordinator Statistics

	BCCF	CCCF	HCCC	KCCC	BCF	CMRC
Total Assigned to Facility	694	986	763	813	194	305
Total Available for Assignment	672	959	710	773	213	299
Segregation Population	22	27	27	40	3	0
Unassigned Population	41	105	74	173	84	6
% of I/M's Working/Programming	97%	94%	91%	79%	62%	99.5%
Jobs Approved	88	272	238	53	58	175
Jobs Denied	1	26	6	0	14	0
Jobs Requested	89	298	244	53	72	175
Outside Clearance Granted	1	0	0	0	1	0

Offender Programs

Educational/Vocational Enrollment	BCCF	CCCF	HCCC	KCCC	BCF	CMRC
Vocational Computer	61	42	32	20	240	0
Vocational Electronics	12	38	31	0	0	0
Vocational Masonry	0	0	0	22	0	0
Vocational Plumbing	0	0	0	19	0	0
Vocational Business	0	0	0	38	0	0
Vocational K-9 Science	0	0	0	6	0	0
Vocational Horticulture	0	11	30	0	0	0
Vocational Custodial	13	30	21	0	0	0
Vocational Woodshop	0	69	0	0	0	0
Thinking for a Change	0	0	0	7	0	0
Life Skills Parenting from Prison	0	0	0	56	0	0
Life Skills	0	26	27	12	0	30
Residential Wiring	0	0	0	0	0	0
Music Theory	0	0	0	0	0	0
Art & Drawing Class	0	12	0	0	0	0
ESL/ABE	48	0	83	118	0	2
Reintegration Program	12	0	0	0	20	0
GED	54	40	34	67	34	18

Volunteer Programs	BCCF	CCCF	HCCC	KCCC	BCF	CMRC
AA/NA	0	90	79	109	0	0
Relapse Prevention	0	0	14	0	36	0
Relapse Aftercare	0	0	0	0	0	0
White Bison	0	19	0	0	0	0
Spanish AA	0	39	0	0	0	0
Spanish Relapse Prevention	0	48	0	0	0	0
Religious Programs	0	0	325	0	0	0
12-Step (NAAA)	44	0	0	0	0	0
SSIC (ARP)	24	19	0	42	0	0
Insight into Addictions	0	25	0	0	0	0

Required Classes	BCCF	CCCF	HCCC	KCCC	BCF	CMRC
Anger Management	11	190	13	16	15	0
Core Curriculum	0	0	0	17	0	0
Sex Offender Treatment	0	0	0	0	0	0

Food Service

The six private facilities provide meals to approximately 3,800 offenders. The four CCA facilities contract for this service with Canteen, Inc. CMRC contracts with Aramark Corporation for food services and Brush runs their own food service program.

Laundry

Provides laundry services and delivery to approximately 3,800 offenders.

Unique Features of Facility

BCCF runs Southeastern Colorado Recycling Center (operated by facility inmates) and Books on Tape Reading Program (books recorded for blind and learning disabled). CCCF builds cabinets for Habitat for Humanity and also builds cabinets for local organizations. HCCC currently participates in a K-9 companion program. HCCC also has completed numerous projects for the community signs for the courthouse fixing the statue in the city square and they make cattleguards for county roads. KCCC has the CARES (Canine Adult Rehabilitative Educational Services) program. Inmates provide baseline to extensive training for dogs over a 1-year time period. The dogs are trained for specific goals in mind; they are used as therapy dogs, guide dogs, and for physically challenged individuals. This program provides the inmates with a sense of

responsibility that many have never experienced before, and also fills the demand for well-trained dogs for those in need.

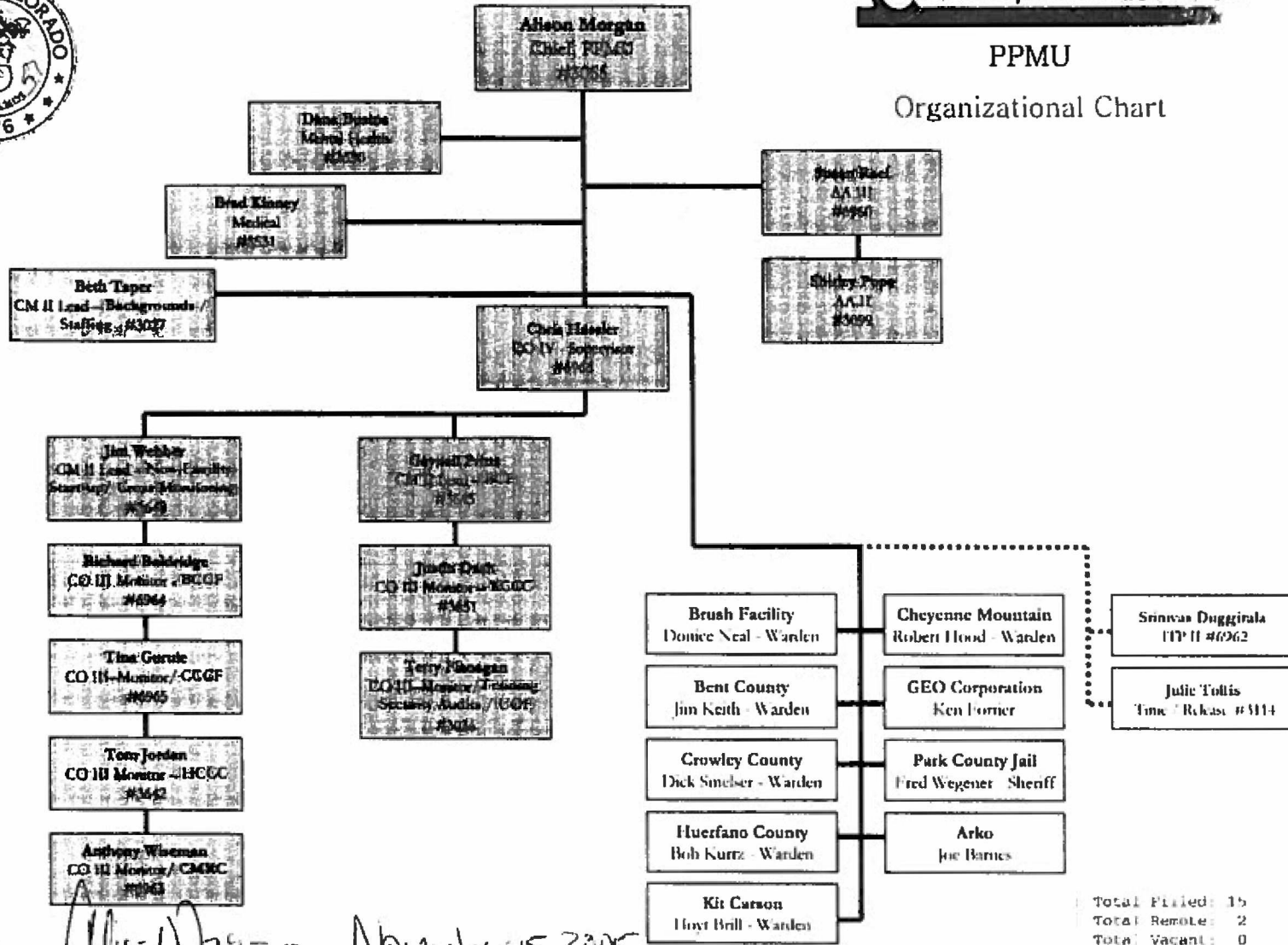
KCCC also participates in Wheels for the World - a part of Joni and Friends, a nonprofit Christian organization that is committed to spreading the ministry all over the world. The beauty of the Wheels for the World program lies in its teamwork approach: local communities collect used wheelchairs destined to be transformed into a life-changing tool for someone overseas. The chairs are delivered to the facility and the inmates refurbish them to like new condition. The wheelchairs are shipped overseas with a bible of the preferred language. The inmates learn to work together, perfect basic mechanical skills and produce a product of which they can be proud.

PPMU ORGANIZATIONAL CHART



PPMU

Organizational Chart



7 of 7

Alison Morgan *Alison Morgan* - Date *November 15, 2005*

Vacant Positions Remote Positions Contracts

Total Filled: 15
Total Remote: 2
Total Vacant: 0
Unit Total: 17