

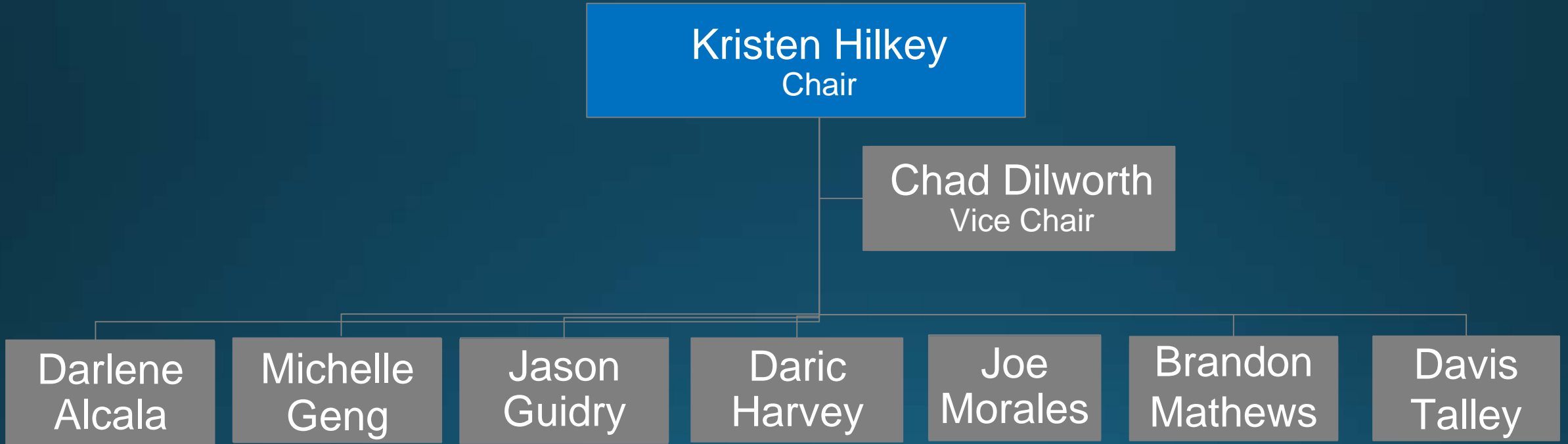
Colorado State Board of Parole



Ensuring public safety through the critical evaluation of each inmate's potential to reintegrate into society.



Parole Board Members





Parole Board Support





Mandatory vs. Discretionary Parole

- Discretionary Parole may be granted prior to an inmate's Mandatory Parole Date (MRD) by the Parole Board.
- Separate from the Parole Board, the CDOC may:
 - Refer someone to Community Corrections
 - Place someone on ISP-I
 - ISP-Inmate Status vs. ISP-Parole
- Mandatory Parole Releases are automatic; however, the parole board members set conditions of parole for these inmates.



Application Hearings

- In Fiscal Year 2020 the Board conducted 17,111 application hearings.
- Each parole board member's agenda, depending on location, can have anywhere from 10-20 individual hearings.
- Application hearings are conducted in person, via video or phone by each parole board member four days per week.
- Every Friday at least seven board members conduct Panel Reviews to review Victim Rights Act (VRA) cases or any other case a parole board member wants reviewed by the panel.



Revocation Hearings

- In Fiscal Year 2020 the Board conducted 5,784 revocation hearings.
- Parolees can only be revoked as statute dictates:
 - New felony or misdemeanor* conviction(s)
 - *Revocations for misdemeanors are classified as “Technical Parole Violation” returns
 - Abscond
 - In possession of a weapon or caused serious bodily injury to a victim
 - Terminated unsuccessfully from sex offender treatment
 - Willful tampering (to include purposeful low battery) or removal of an electronic monitoring device that the parolee is required to wear as a condition of his or her parole
 - Unlawful contact with victim(s)



Early Parole Discharge Applications by FY and Parole Board Decision

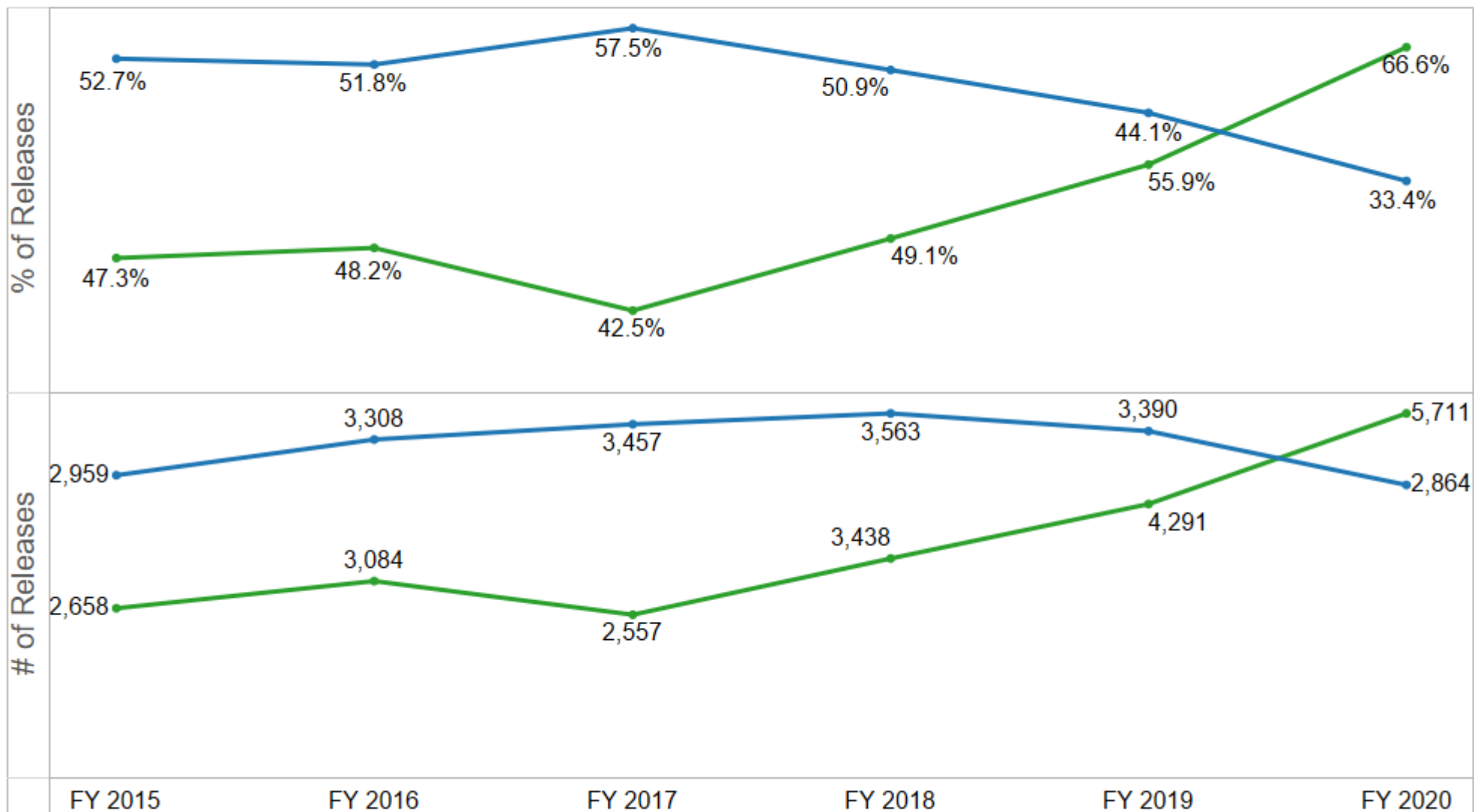
	2014	2015	2016	2017	2018	2019	2020
Approved #	156	417	552	614	1,142	760	1,153
Denied #	38	139	134	89	419	173	398
Approved %	80%	75%	80%	87%	73%	81%	74%
Denied %	20%	25%	20%	13%	27%	19%	26%

*Includes all early parole discharge applications that were presented to the Parole Board and had a final decision as of 6/30/2020.



Total Discretionary and Mandatory Releases by Fiscal Year*

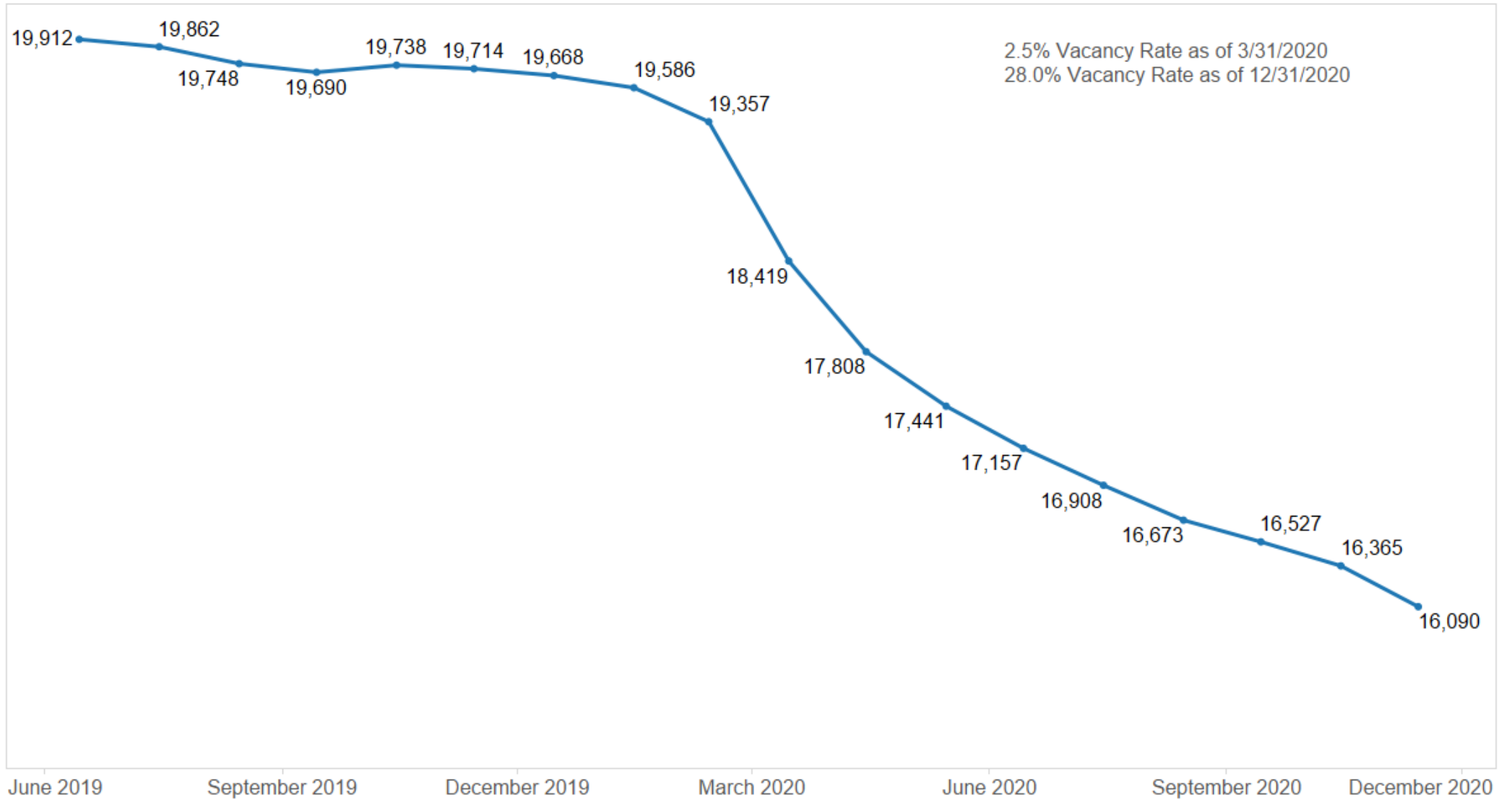
■ Discretionary Releases ■ Mandatory Releases



*Data includes only Discretionary and Mandatory Releases Finalized in FY2015 through FY2020. Does not include other release types, such as Discharges, Mandatory re-parole releases, etc.



CDOC Total Inmate Jurisdictional Population July 2019 through December 2020*



*Source: Colorado Department of Corrections (CDOC) Monthly Population and Capacity Reports
(<https://www.colorado.gov/pacific/cdoc/departmental-reports-and-statistics>)

**Vacancy Rates include RTP beds.



FY 2020 Quick Statistics

- 17,111 Parole Application Hearings
 - 3,200 Full Board Reviews
 - 5,784 Parole Revocation Hearings
- 1,551 Early Parole Discharge Reviews
 - 309 Parole Rescission Hearings
- 1,055 File Reviews in lieu of Parole Application Hearings
 - 709 waivers

Approximately 2,400 decisions a month
More than 29,000 decisions a year



Special Needs Parole
CDOC Recommendation

Fiscal Year (Date received at the Parole Board)	2012	2013	2014	2015	2016	2017	2018	2019	2020	2021(through Dec. 31, 2020)	Total
Recommended by CDOC	15	17	5	6	2	4	1	7	6	18	81
NOT Recommended by CDOC	27	22	45	31	40	29	37	29	37	87	384
NO Recommendation by CDOC		1		1							2
TOTAL	42	40	50	38	42	33	38	36	43	105	467

Special Needs Parole
Parole Board Decisions

Fiscal Year (Date received at the Parole Board)	2012	2013	2014	2015	2016	2017	2018	2019	2020	2021(through Dec. 31, 2020)	Total
Granted SNP	10	4	2	3	4	4	4	7	5	13	56
Denied SNP	30	33	46	32	35	28	33	29	37	91	394
No Decision made on SNP	2	3	2	3	3	1	1	0	1	1	17
TOTAL	42	40	50	38	42	33	38	36	43	105	362

*Data above only includes finalized decisions by the Parole Board, no pending decisions are included.

**Data does not include applications submitted through EO D 2020 016.

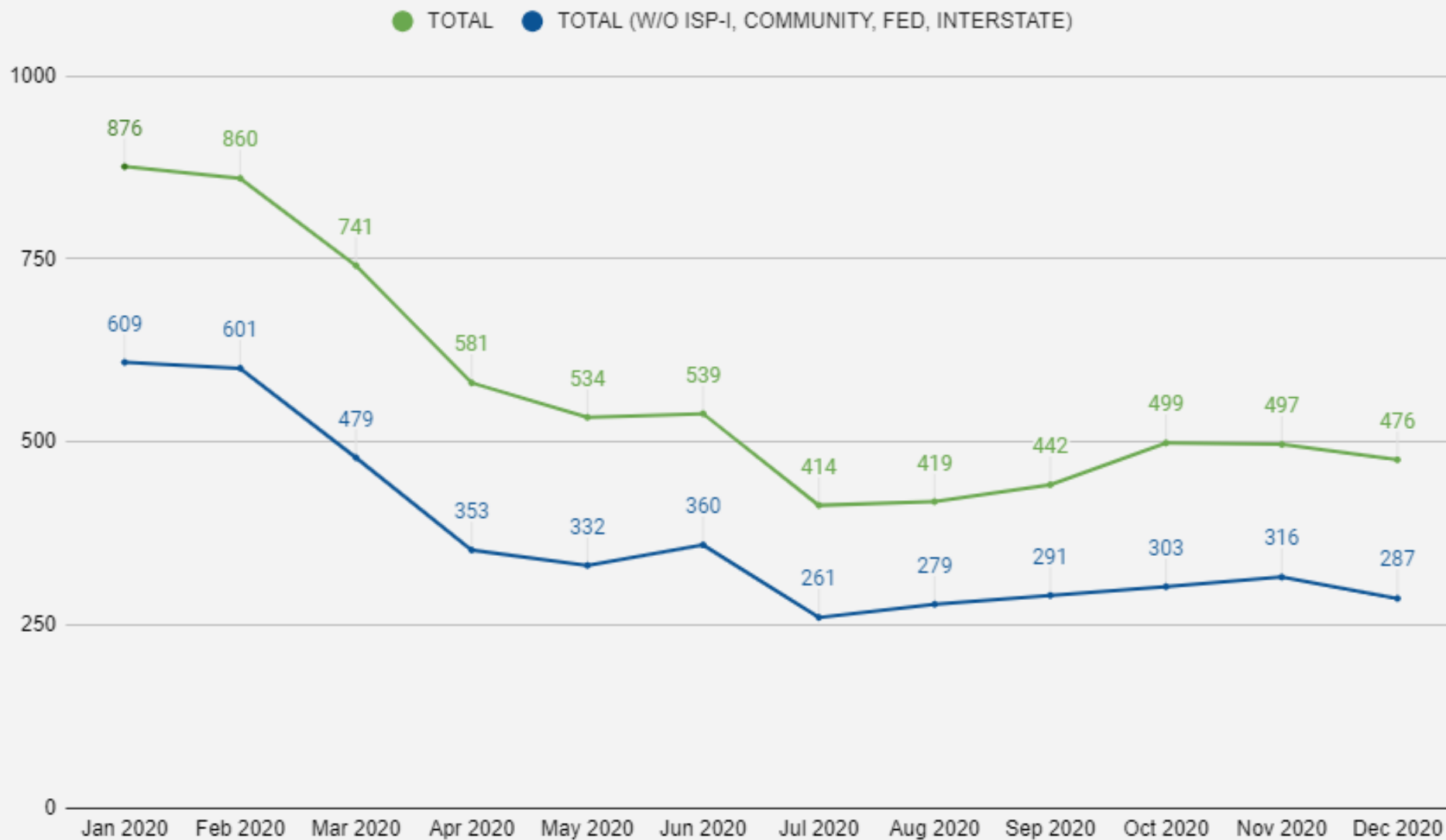
Executive Order (EO D 2020 016) - Special Needs Parole
Parole Board Decisions

Approved	166
Denied	54
Sentence Discharged	1
Total Submitted	221

*Data above only includes finalized decisions by the Parole Board, no pending decisions are included.



Total Offenders Tabled at the End of Each Month





Misconception Trivia

- Is the Parole Board a part of the Colorado Department of Corrections?
 - No, the Parole Board is a separate state agency with separate decision-making authority; however, there is strong collaboration between the agencies.
- Does the Parole Board have direct control over the Division of Adult Parole and their supervision strategies?
 - No, the Parole Board is a separate state agency from the Division of Adult Parole; however, there is strong collaboration between the agencies.
- Does the Parole Board have direct control over Community Corrections and program placement decisions?
 - No, the Parole Board is a Type I, separate state agency.
- Does the Parole Board approve or deny parole plans?
 - No, this is the responsibility of the Division of Adult Parole.



Parole Board Projects

- Revocation Hearing and Parole Agreement Automation
 - Data is now being collected on revocation hearings outcomes to better inform future decisions
 - Increased efficiency and cost savings
 - Paper based processes are now fully electronic
- Parole Board Release Guideline Instrument (PBRGI) version 2
- Parole Board Rules revision
- Pueblo Office staff reorganization



Response to the COVID-19 pandemic

- The Parole Board looked at every decision point and identified ways to adapt and change practices in order to help support the entire justice system, by balancing public safety with public health needs.
- The Parole Board was able to work collaboratively with the CDOC to quickly and significantly reduce the number of incarcerated individuals, while maintaining public safety.
 - HB 17-1326 File Reviews
 - Six months or less to MRD
 - MRD's in 2020
 - Executive Order D 2020 16; expanded criteria for Special Needs Parole applications
 - Jail population pending a parole revocation hearing
 - Updated eligibility criteria for Early Parole Discharge
 - Offenders past Parole Eligibility Dates (PED)
- The Parole Board conducted ALL regular business (statutory) requirements during this time.



Questions?

Thank you!