

Colorado Board of Parole



**Ensuring public safety through the critical
evaluation of each inmate's potential to
reintegrate into society**



Board Members

Kristen Hilkey
Chair

Chad Dilworth
Vice Chair

**Darlene
Alcala**

**Denise
Balazic**

**Michelle
Geng**

**Jason
Guidry**

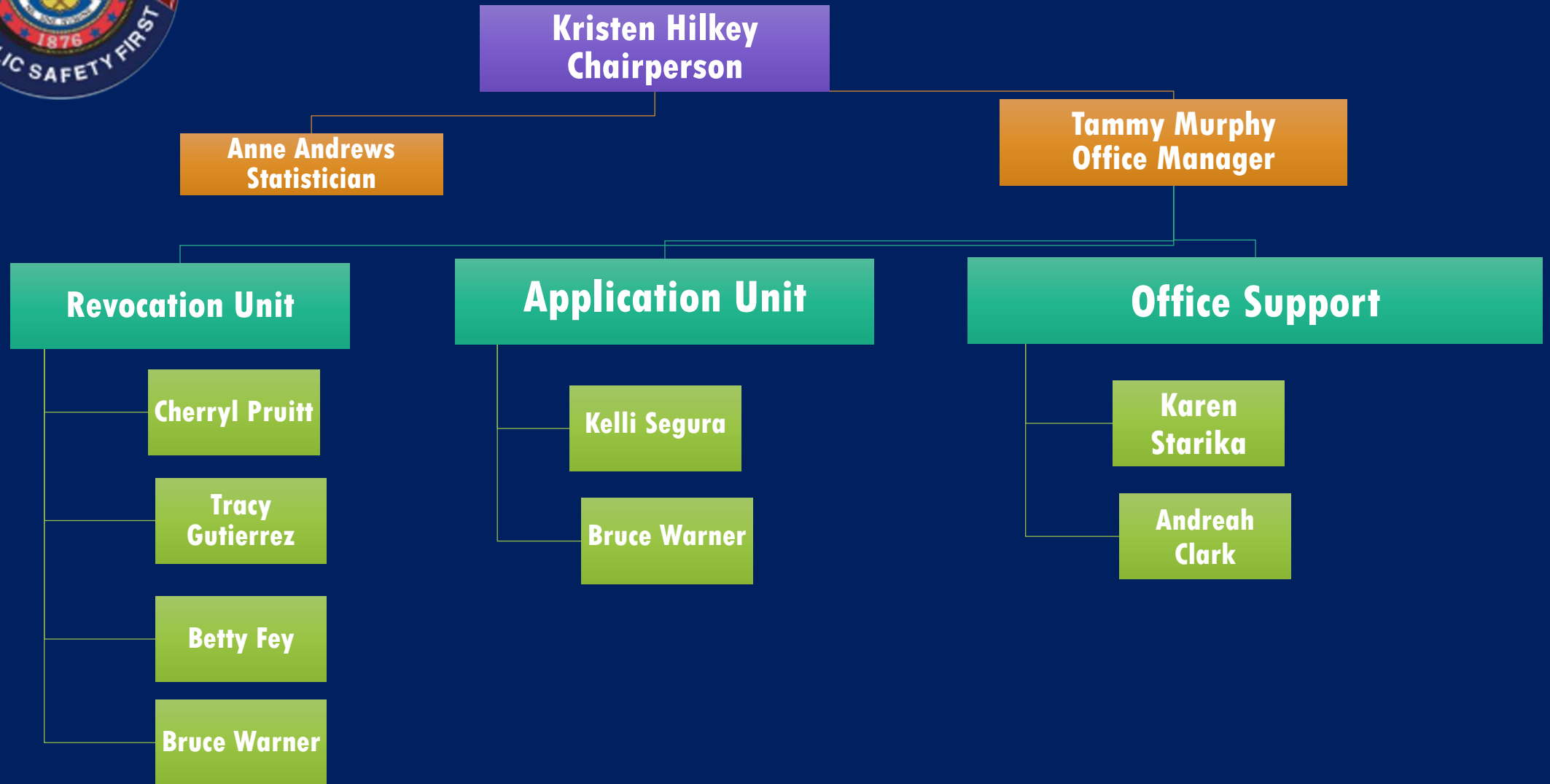
**Joe
Morales**

**Brandon
Mathews**

**Alfredo
Pena**



Parole Board Office





Common Misconceptions

- The Parole Board is a part of Colorado Department of Corrections**
 - **Incorrect. The Parole Board is a separate state agency with separate decision-making authority; however, collaboration is strong.**
- The Parole Board has direct control over the Division of Parole and their supervision strategies.**
 - **Incorrect. The Parole Board is a separate state agency from the Division of Adult Parole; however, collaboration is strong.**
- The Parole Board has direct control over Community Corrections and program placement decisions.**
 - **Incorrect. Again, we are a separate state agency.**
- The Parole Board approves or denies parole plans.**
 - **Incorrect. This is the responsibility of the Division of Adult Parole.**



Common Misconceptions

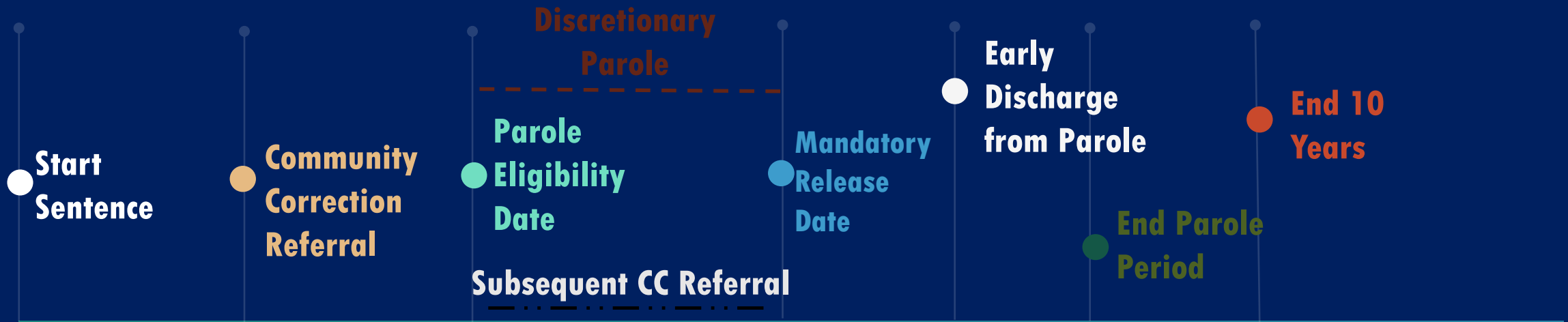
- The Parole Board releases people homeless.**
 - The Parole Board does not release people homeless, as there are many community resources that will assist.**
 - By law, inmates must be released on their Mandatory Release Date (MRD), whether they are homeless or not.**
 - The Parole Board cannot stop an MRD from happening.**

Common perception of an offender's path to Parole



**Example: Prison sentence 10 years
with a 3 year parole period** (often referred to as the parole "tail")

Reality of offender's path to parole



**Example: Prison sentence 10 years
with a 3 year parole tail**



FY 2019 Quick Statistics

- **14,410 Parole Application Hearings**
 - **2,829 Full Board Reviews**
 - **7,379 Parole Revocation Hearings**
- **1,285 Early Parole Discharge Reviews**
 - **376 Parole Rescission Hearings**
- **3,014 File Reviews in lieu of Parole Application Hearings**
 - **561 waivers**

- **Approximately 2,400 decisions a month**
 - **More than 29,000 decisions a year**

Structured Decision-Making

Parole Board Release Guideline Instrument (PBRGI)



Risk Domain

- CARAS = Baseline Risk
- Class II COPD Last 3 Months
- COPD Victim Related
- Escape (yes or No)

* Evidence-Informed and Statutorily Mandated Criteria are Included

Neither risk assessment nor professional judgement should be used in isolation of each other

* Intended to provide Guidance & Consistency of Decisions Across Cases and Board Members



Readiness Domain

- Level of Supervision Inventory
 - Total Score
 - Rater Box
- Manageable in Community
- Parole Plan
- Treatment Participation
- Program Participation

File Review Options

Creates a reduction in hearing loads and allows for members to focus attention on those individuals with medium and high criminogenic needs

1

Mandatory Release Date File Reviews

This allows the Parole Board to conduct a file review, in lieu of a hearing, for individuals who are within 6 months of the mandatory or statutory release date.

2

ICE Detainer File Review

This allows the Parole Board to conduct a file review, in lieu of a hearing, on low need/high ready individuals with ICE detainer_s

3

Fast Track File Reviews

Allows the Parole Board to conduct a file review, in lieu of a parole application hearing, on low need/high ready individuals in DOC who can transition to parole.



Thank You!

Do you have any questions?