

# COLORADO DEPARTMENT OF CORRECTIONS

## Recidivism and Cumulative Return Rates Calendar Year Releases from 1998 through 2005



**Kristi Rosten  
Bonnie Barr  
Kim Mersman  
Office of Planning & Analysis  
November 2007**

## Recidivism and Cumulative Return Rates Calendar Years 1998 through 2005

### Three-Year Recidivism Rates

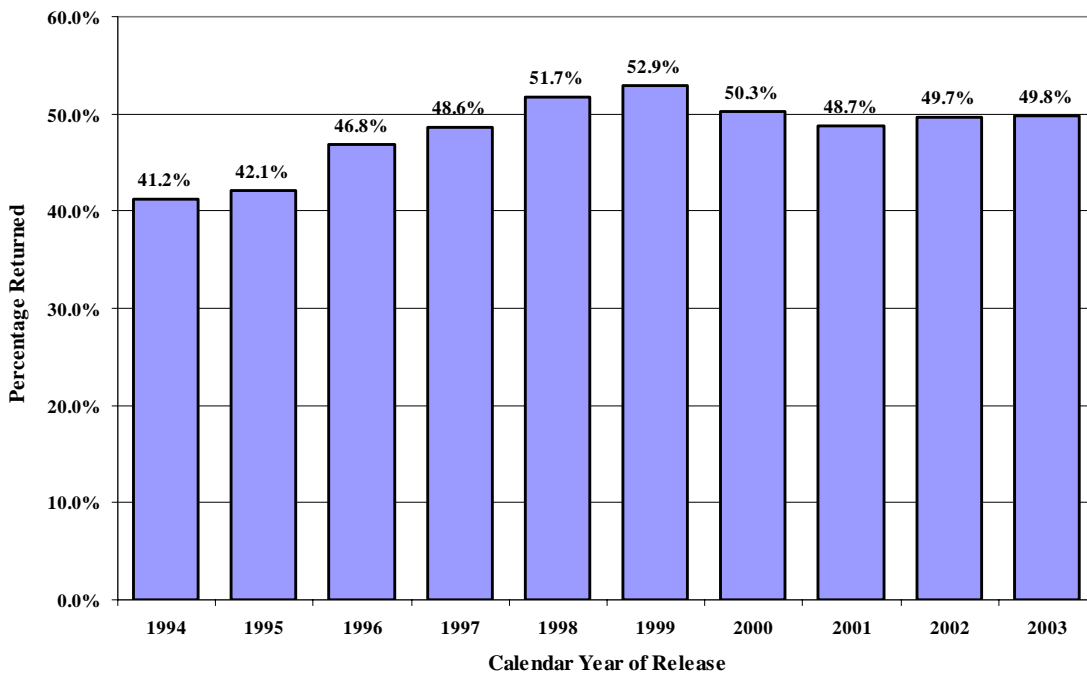
The Colorado Department of Corrections defines recidivism as a return to prison in Colorado for either new criminal activity or technical violation of parole, probation or non-departmental community placement within three years of release. This definition follows national practices established several years ago and has been used consistently by the Department for over 15 years. The Department also reports cumulative return rates for shorter and longer terms for additional trend analysis.

*Recidivism  
Return to prison  
in Colorado for  
either new  
criminal activity  
or technical  
violation within  
three years of  
release.*

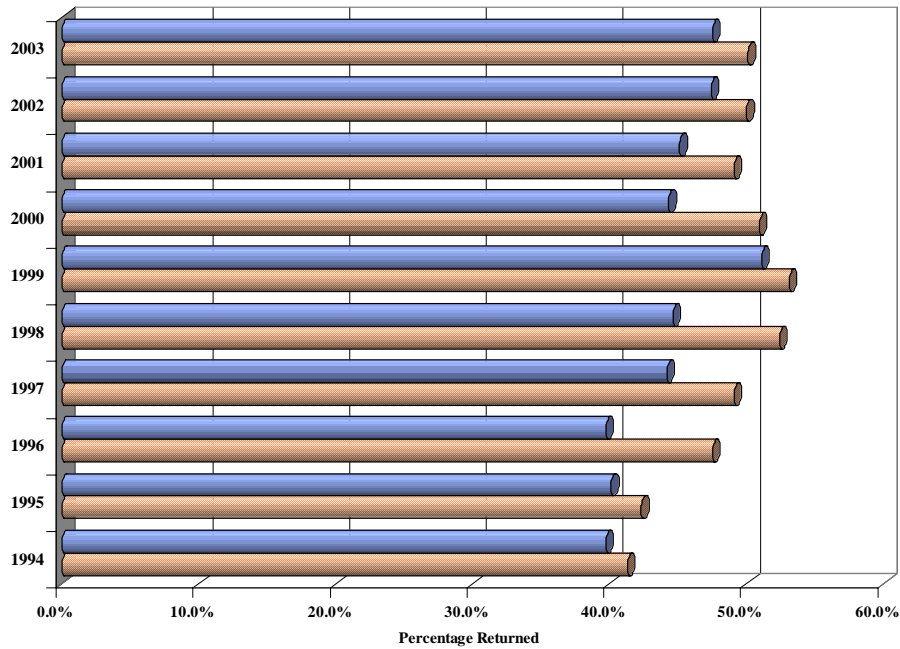
This report examines recidivism and cumulative return rates of offenders sentenced to and subsequently released from adult prison in Colorado. Offenders sentenced to the Youthful Offender System are excluded as their recidivism and re-offense rates are analyzed in other documents and reports.

The 3-year recidivism rates are presented in Tables 1 and 2 for offenders released in calendar years 1994 through 2003, including a comparison of the rates by gender.

**Table 1**  
**Three Year Recidivism Rates**  
**Release Years 1994 through 2003**



**Table 2**  
**Three Year Recidivism Rates**  
**Release Years 1994 through 2003**



	1994	1995	1996	1997	1998	1999	2000	2001	2002	2003
Female Releases	39.7%	40.1%	39.7%	44.2%	44.6%	51.1%	44.3%	45.1%	47.4%	47.5%
Male Releases	41.3%	42.3%	47.5%	49.1%	52.4%	53.1%	50.9%	49.1%	50.0%	50.1%

The recidivism rates for the 2002 and 2003 release cohorts by type of release and gender are shown in Table 3.

**Table 3**  
**Comparison of 2002 and 2003 Recidivism Rates**  
**By Type of Release**

Release Type	2002			2003		
	Males	Females	Total	Males	Females	Total
Parole	53.9%	43.3%	52.6%	57.3%	50.6%	56.3%
Mandatory Parole	64.9%	65.8%	65.0%	62.4%	58.7%	62.1%
Post-Release Supervision <sup>(1)</sup>	45.5%	63.6%	46.7%	39.0%	30.8%	38.1%
Probation	38.6%	43.3%	39.2%	39.4%	45.5%	40.2%
Court Order Discharge	56.0%	41.7%	54.4%	46.5%	30.0%	45.2%
Sentence Discharge	24.6%	21.7%	24.3%	25.7%	22.3%	25.5%
Other <sup>(2)</sup>	3.5%	0.0%	3.2%	3.8%	0.0%	3.5%
<b>TOTAL</b>	<b>50.0%</b>	<b>47.4%</b>	<b>49.7%</b>	<b>50.1%</b>	<b>47.5%</b>	<b>49.8%</b>

<sup>(1)</sup> Post-release supervision includes discretionary and mandatory releases to community supervision

<sup>(2)</sup> Other includes releases to appeal bond, interstate transfers, international releases and deceased.

## Cumulative Return Rates

Cumulative return rates are based on the same definition as used for recidivism, a return to prison in Colorado for either new criminal activity or technical violation, for shorter and longer follow-up timeframes. One-, two-, three-, four- and five-year follow-up periods are monitored for each calendar year release cohort. The three-year cumulative return rate is also the recidivism rate by definition. The cumulative return rates for releases from 1998 through 2005 are shown below.

*Cumulative Return Rate*

*Return to prison in Colorado for either new criminal activity or technical violation for one-, two-, three-, four-, and five-year follow-up periods. Three-year cumulative return rate is the three-year recidivism rate.*

**Table 4**  
Cumulative Return Rates  
For Calendar Year Releases 1998 Through 2005

Release Year	Cumulative Percent Returned After:				
	1 Year	2 Years	3 Years	4 Years	5 Years
1998	37.9%	47.7%	51.7%	54.1%	55.8%
1999	40.0%	48.8%	52.9%	54.6%	56.6%
2000	37.9%	46.5%	50.3%	52.9%	54.8%
2001	36.7%	44.7%	48.7%	51.5%	53.6%
2002	36.3%	45.2%	49.7%	52.3%	--
2003	36.2%	45.3%	49.8%	--	--
2004	40.8%	49.7%	--	--	--
2005	41.7%	--	--	--	--

Table 5 presents a comparison of the 1-year, 3-year and 5-year return rates by calendar year of release.

