

COLORADO DEPARTMENT OF CORRECTIONS

Recidivism and Cumulative Return Rates Calendar Years 1997 through 2004



**Kristi Rosten
Bonnie Barr
Kim Mersman
Office of Planning & Analysis
December 2006**

Recidivism and Cumulative Return Rates Calendar Years 1997 through 2004

Three-Year Recidivism Rates

The Colorado Department of Corrections defines recidivism as a return to prison in Colorado for either new criminal activity or technical violation of parole, probation or non-departmental community placement within three years of release. This definition follows national practices established several years ago and has been used consistently by the Department for over 15 years. The Department also reports cumulative return rates for shorter and longer terms for additional trend analysis.

*Recidivism
Return to prison
in Colorado for
either new
criminal activity
or technical
violation within
three years of
release.*

This report examines recidivism and cumulative return rates of offenders sentenced to and subsequently released from adult prison in Colorado. Offenders sentenced to the Youthful Offender System are excluded as their recidivism and re-offense rates are analyzed in other documents and reports.

The 3-year recidivism rates are presented in Tables 1 and 2 for offenders released in calendar years 1993 through 2002, including a comparison of the rates by gender.

Table 1
Three Year Recidivism Rates
Release Years 1993 through 2002

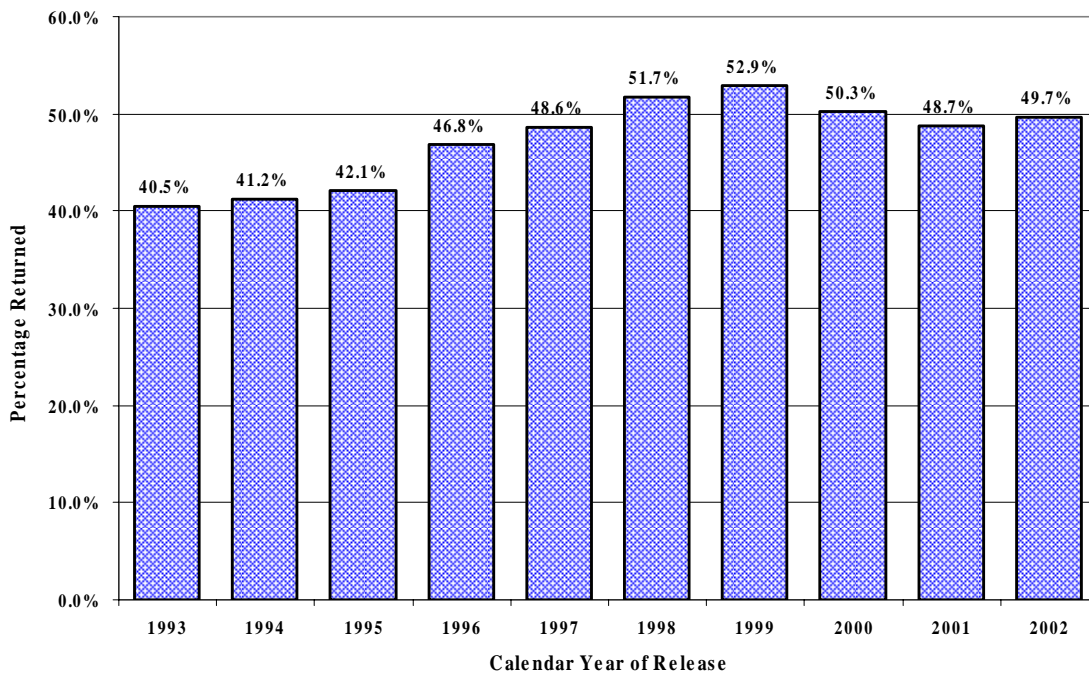
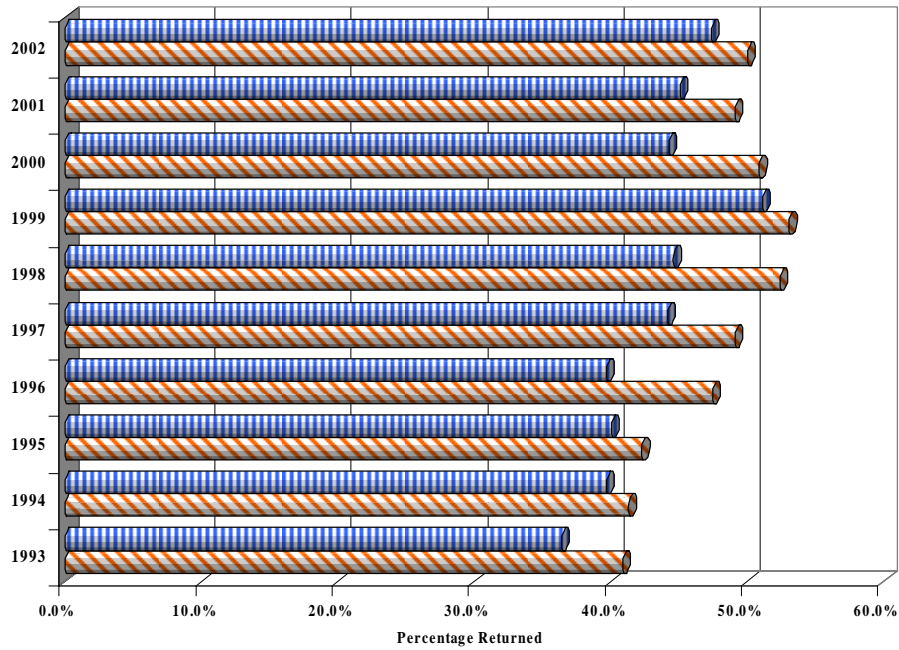


Table 2
Three Year Recidivism Rates
Release Years 1993 through 2002



	1993	1994	1995	1996	1997	1998	1999	2000	2001	2002
Female Releases	36.4%	39.7%	40.1%	39.7%	44.2%	44.6%	51.1%	44.3%	45.1%	47.4%
Male Releases	40.9%	41.3%	42.3%	47.5%	49.1%	52.4%	53.1%	50.9%	49.1%	50.0%

The recidivism rates for the 2001 and 2002 release cohorts by type of release and gender are shown in Table 3.

Table 3
Comparison of 2001 and 2002 Recidivism Rates
By Type of Release

Release Type	2001			2002		
	Males	Females	Total	Males	Females	Total
Parole	53.5%	45.5%	52.4%	53.9%	43.3%	52.6%
Mandatory Parole	66.0%	61.0%	65.6%	64.9%	65.8%	65.0%
Post-Release Supervision ⁽¹⁾	32.4%	0.0%	30.6%	45.5%	63.6%	46.7%
Probation	31.6%	41.4%	32.8%	38.6%	43.3%	39.2%
Court Order Discharge	50.0%	47.1%	49.7%	56.0%	41.7%	54.4%
Sentence Discharge	26.2%	21.4%	25.8%	24.6%	21.7%	24.3%
Other ⁽²⁾	2.1%	0.0%	2.0%	3.5%	0.0%	3.2%
TOTAL	49.1%	45.1%	48.7%	50.0%	47.4%	49.7%

⁽¹⁾ Post-release supervision includes discretionary and mandatory releases to community supervision

⁽²⁾ Other includes releases to appeal bond, interstate transfers, international releases and deceased.

Cumulative Return Rates

Cumulative return rates are based on the same definition as used for recidivism, a return to prison in Colorado for either new criminal activity or technical violation, for shorter and longer follow-up timeframes. One-, two-, three-, four- and five-year follow-up periods are monitored for each calendar year release cohort. The three-year cumulative return rate is also the recidivism rate by definition. The cumulative return rates for releases from 1997 through 2004 are shown below.

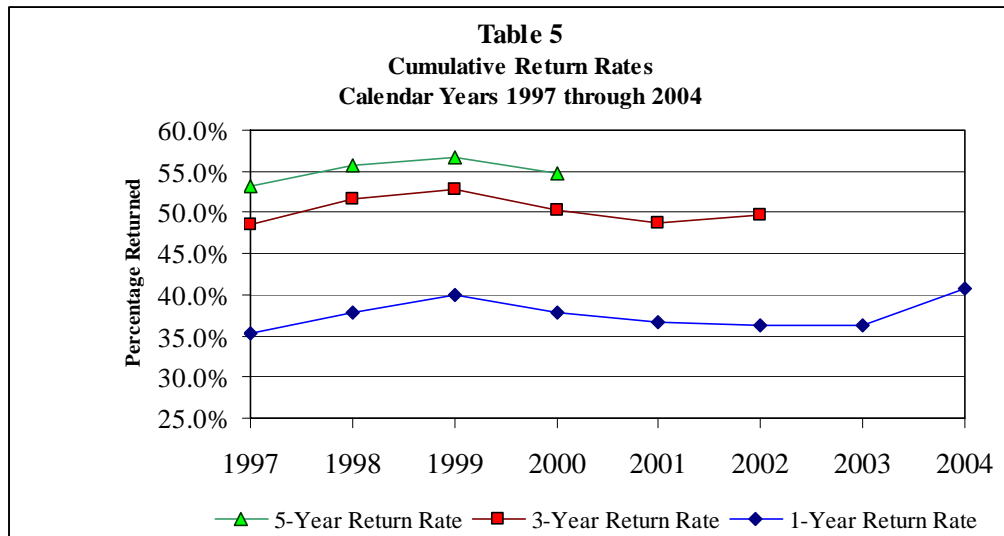
Cumulative Return Rate

Return to prison in Colorado for either new criminal activity or technical violation for one-, two-, three-, four-, and five-year follow-up periods. Three-year cumulative return rate is the three-year recidivism rate.

Table 4
Cumulative Return Rates
For Calendar Year Releases 1997 Through 2004

Release Year	Cumulative Percent Returned After:				
	1 Year	2 Years	3 Years	4 Years	5 Years
1997	35.4%	44.7%	48.6%	51.5%	53.2%
1998	37.9%	47.7%	51.7%	54.1%	55.8%
1999	40.0%	48.8%	52.9%	54.6%	56.6%
2000	37.9%	46.5%	50.3%	52.9%	54.8%
2001	36.7%	44.7%	48.7%	51.5%	--
2002	36.3%	45.2%	49.7%	--	--
2003	36.2%	45.3%	--	--	--
2004	40.8%	--	--	--	--

Table 5 presents a comparison of the 1-year, 3-year and 5-year return rates by calendar year of release.



Three-Year Recidivism Analysis of Calendar Year 2002 Releases

Comparative analysis was conducted for the recidivist and non-recidivist populations within the calendar year 2002 release cohort. 3,242 offenders returned to prison within three years of release while 3,280 offenders remained out of prison for three years or longer, resulting in a three-year recidivism rate of 49.7%. Table 6 provides the return type distribution by release type and gender for those offenders released in 2002.

Table 6
Calendar Year 2002 Releases
Returned Within Three Years

Release Type	Total Releases	Not Returned	Returned Within Three Years	
			Technical Violation ⁽¹⁾	Felony Conviction
Total Releases				
Disc. Parole	1,895	47.4%	39.6%	13.0%
Mandatory Parole	2,528	35.0%	49.6%	15.4%
Mandatory Reparole	-	-	-	-
Post-Release Supervision ⁽²⁾	167	53.3%	16.2%	30.5%
Release to Probation	250	60.8%	14.8%	24.4%
Court Order Discharge	103	45.6%	21.4%	33.0%
Sentence Discharge	1,516	75.7%	0.0%	24.3%
Other ⁽³⁾	63	96.8%	3.2%	0.0%
TOTAL	6,522	50.3%	32.1%	17.6%
Male Releases				
Disc. Parole	1,650	46.1%	40.8%	13.1%
Mandatory Parole	2,300	35.1%	49.9%	15.0%
Mandatory Reparole	-	-	-	-
Post-Release Supervision	156	54.5%	15.4%	30.1%
Release to Probation	220	61.4%	12.7%	25.9%
Court Order Discharge	91	44.0%	20.9%	35.2%
Sentence Discharge	1,401	75.4%	0.0%	24.6%
Other	58	96.6%	3.4%	0.0%
TOTAL	5,876	50.0%	32.2%	17.7%
Female Releases				
Disc. Parole	245	56.7%	31.0%	12.2%
Mandatory Parole	228	34.2%	46.5%	19.3%
Mandatory Reparole	-	-	-	-
Post-Release Supervision	11	36.4%	27.3%	36.4%
Release to Probation	30	56.7%	30.0%	13.3%
Court Order Discharge	12	58.3%	25.0%	16.7%
Sentence Discharge	115	78.3%	0.0%	21.7%
Other	5	100.0%	0.0%	0.0%
TOTAL	646	52.6%	30.5%	16.9%

⁽¹⁾ Technical violation includes non-felony convictions and/or violations of conditions of parole, probation or court-ordered supervision.

⁽²⁾ Post-release supervision includes discretionary and mandatory releases to community supervision

⁽³⁾ Other includes releases to appeal bond, interstate transfers, international releases and deceased.

The following table provides the comparison of the three-year recidivists to non-recidivists for this 2002 release cohort.

Table 7
Calendar Year 2002 Releases
Comparison of Three-Year Returns to Non>Returns

	Total Releases		Not Returned n = 3,280	Returned n = 3,242	<i>P</i>
	No. of Offenders N = 6,522	Percent of Total Releases			
Gender					n.s.
Male	5,876	90.1%	89.6%	90.6%	
Female	646	9.9%	10.4%	9.4%	
Ethnicity					<.001
White	2,958	45.4%	47.2%	43.5%	
Hispanic	1,885	28.9%	30.2%	27.5%	
African-American	1,498	23.0%	19.7%	26.2%	
American Indian	146	2.2%	2.1%	2.3%	
Asian	35	0.5%	0.7%	0.4%	
Age at Release					
18 - 19 years	48	0.7%	0.4%	1.1%	
20 - 24 years	1,003	15.4%	12.8%	18.0%	
25 - 29 years	1,238	19.0%	19.1%	18.8%	
30 - 34 years	1,164	17.8%	16.9%	18.8%	
35 - 39 years	1,160	17.8%	17.0%	18.6%	
40 - 49 years	1,485	22.8%	24.4%	21.1%	
50 - 59 years	349	5.4%	7.4%	3.3%	
60 - 69 years	57	0.9%	1.5%	0.3%	
70 + years	18	0.3%	0.5%	0.1%	
Mean Age in years (SD)		34.6	35.8 (10.1)	33.4 (8.7)	<.001
Class of Felony					<.001
I	9	0.1%	0.2%	0.0%	
II	37	0.6%	1.0%	0.1%	
III	940	14.4%	16.0%	12.8%	
IV	2,628	40.3%	40.8%	39.8%	
V	2,059	31.6%	28.3%	34.9%	
VI	805	12.3%	12.5%	12.2%	
Habitual	19	0.3%	0.4%	0.2%	
Other	25	0.4%	0.6%	0.1%	
Ave. Incarceration Time in mos. (SD)		24.6	26.1 (31.0)	23.1 (22.7)	<.001

Table 7 (Continued)
 Calendar Year 2002 Releases
 Comparison of Three-Year Returns to Non>Returns

	Total Releases		Not Returned n = 3,280	Returned n = 3,242	<i>p</i>
	No. of Offenders N = 6,522	Percent of Total Releases			
Sex Offender Treatment Needs					<.001
None/Moderate	5,585	85.6%	84.1%	87.2%	
Institutional Offense	71	1.1%	0.5%	1.7%	
Factual					
basis/Conviction	866	13.3%	15.5%	11.0%	
Mental Health Needs					<.01
None	3,279	50.3%	51.4%	49.1%	
Mild	1,900	29.1%	29.7%	28.5%	
Moderate	1,164	17.8%	16.6%	19.1%	
High	167	2.6%	2.1%	3.0%	
Extreme	12	0.2%	0.1%	0.2%	
Most Serious Crime					
Homicide	107	1.6%	2.4%	0.8%	
Robbery	243	3.7%	3.4%	4.0%	
Kidnapping	40	0.6%	0.7%	0.5%	
Assault/Veh. Asslt.	419	6.4%	7.1%	5.7%	
Sex Assault/Incest	105	1.6%	2.4%	0.8%	
Child Sex Asslt.	248	3.8%	6.3%	1.3%	
Drug Offenses	1,783	27.3%	28.1%	26.5%	
Burglary	478	7.3%	6.3%	8.4%	
Theft/MV Theft	793	12.2%	11.8%	12.5%	
Forgery	231	3.5%	3.2%	3.9%	
Fraud	96	1.5%	1.4%	1.5%	
Traffic	254	3.9%	4.1%	3.7%	
Escape	637	9.8%	6.9%	12.6%	
Other	1,088	16.7%	15.7%	17.6%	
County of Commitment					
Denver	1,603	24.6%	23.1%	26.1%	
El Paso	663	10.2%	10.1%	10.2%	
Jefferson	683	10.5%	10.1%	10.9%	
Arapahoe	573	8.8%	8.7%	8.9%	
Adams	526	8.1%	8.2%	8.0%	
Larimer	337	5.2%	5.6%	4.7%	
Mesa	294	4.5%	5.1%	3.9%	
Pueblo	271	4.2%	3.6%	4.7%	
Weld	290	4.4%	4.1%	4.8%	
Boulder	232	3.6%	3.6%	3.5%	
Other	1,050	16.1%	17.8%	14.3%	

Short-Term Recidivism Analysis of Calendar Year 2004 One-Year Returns

Table 8 provides more information on the return types for the 2004 release cohort by release type. The technical violation category includes offenders returned to prison for non-felony convictions and/or violations of conditions of parole, probation or court-ordered supervision. These offenders without a new felony conviction are serving time remaining on the original prison sentence imposed.

Table 8
Calendar Year 2004 Releases
Returned Within One Year

Release Type	Total Releases	Not Returned	Returned Within One Year	
			Technical Violation ⁽¹⁾	Felony Conviction
Disc. Parole	1,963	50.7%	36.2%	13.0%
Mandatory Parole	3,272	39.9%	43.9%	16.2%
Mandatory Reparole	658	30.4%	49.2%	20.4%
Release to Probation	197	75.1%	12.7%	12.2%
Court Order Discharge	122	52.5%	30.3%	17.2%
Sentence Discharge	1,674	80.9%	0.0%	19.1%
Other ⁽²⁾	50	100.0%	0.0%	0.0%
TOTAL	7,936	51.9%	31.9%	16.2%

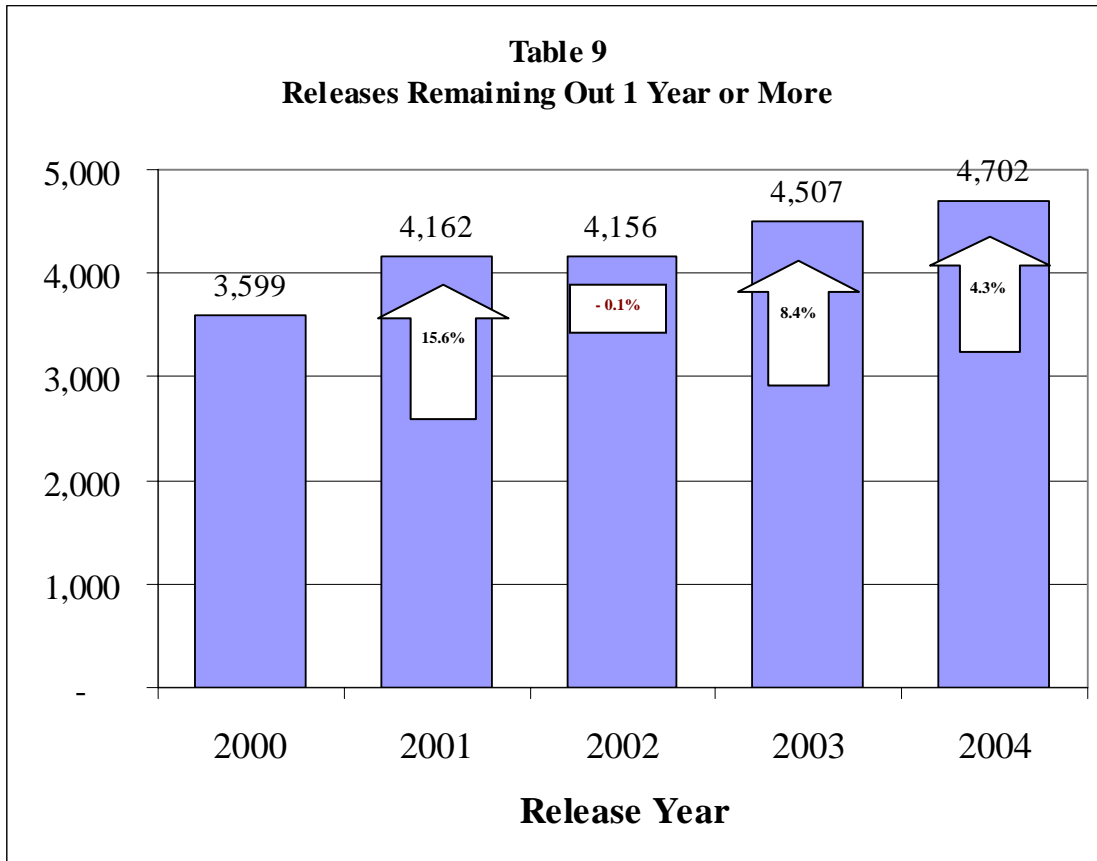
⁽¹⁾ Technical violation includes non-felony convictions and/or violations of conditions of parole, probation or court-ordered supervision.

⁽²⁾ Other includes releases to appeal bond, interstate transfers, international releases and deceased.

- ◆ 16.2% of the 2004 releases returned to prison within one year with a new felony conviction
- ◆ 19.1% of the sentence discharges returned within one year with a new felony conviction
- ◆ 36.7% of the 2,502 returns from parole (discretionary, mandatory and mandatory reparole) returned with a new felony conviction
- ◆ 69.6% of mandatory reparole releases returned to prison within one year, 20.4% returned with a new felony conviction

Non-Recidivism Releases Remaining Out of Prison

Although the recidivism rates have increased in recent years, the number of offenders released each year has also increased. Therefore the number of offenders remaining out of prison (not recidivating) for one year or more has also increased. Table 9 below shows the steady increase in the number of offenders remaining out (not recidivating) over the last five years with just one slight decrease occurring in 2002 releases.



By 2004 the number of offenders remaining out of prison for at least one year has increased by 30.6% compared to the 2000 release cohort. This represents an increase of 1,103 offenders releasing and remaining out of prison for one year or more over this five-year period.